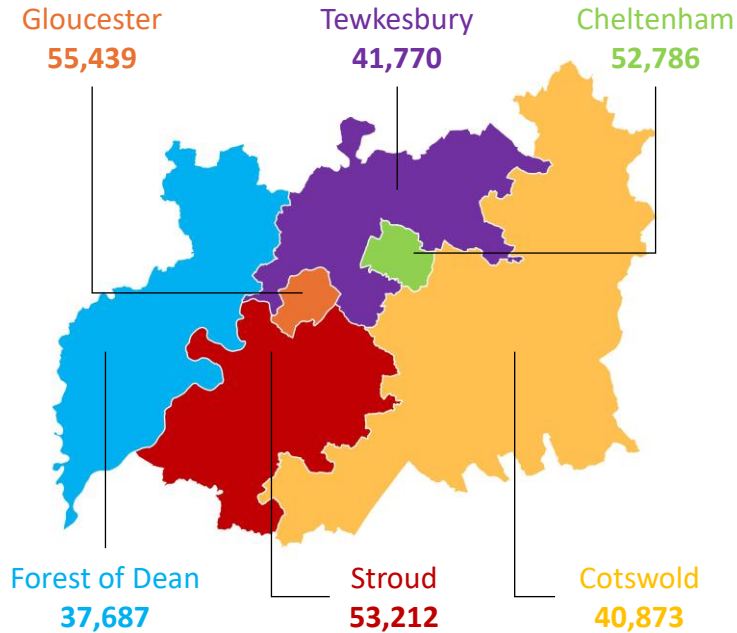


Household Projections 2022 – 2047

Projected Year:
2022

Number of Households 2022

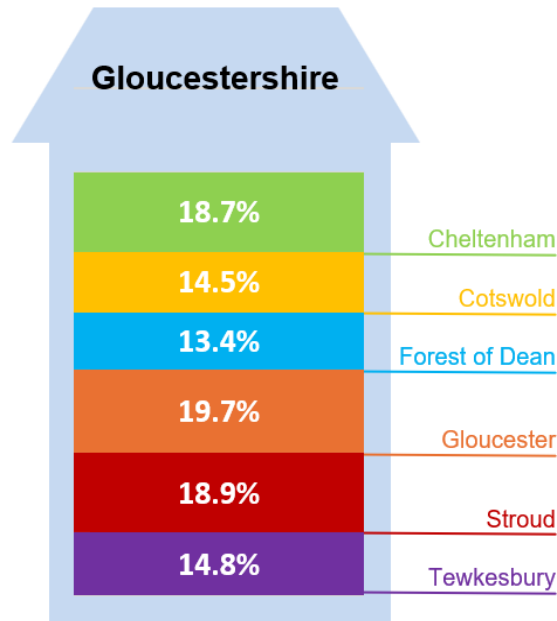
The 2022-based projections suggest that Gloucestershire has **281,768** households.



In 2022, **Gloucester City** has the highest number of households of all districts, at **55,439**.

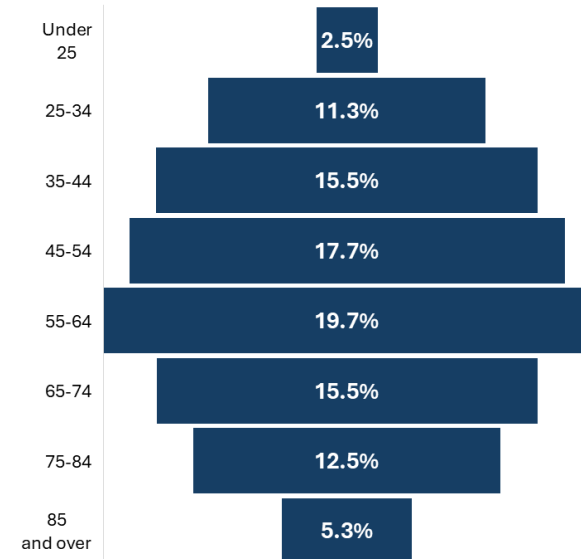
Percentage of Households 2022

In 2022, **Gloucester City** has the largest share of households in Gloucestershire (19.7%).



Percentage of Heads of Households by Age 2022

In 2022, the highest proportion of Gloucestershire households (**19.7%**) are headed by someone aged **55-64** years old.

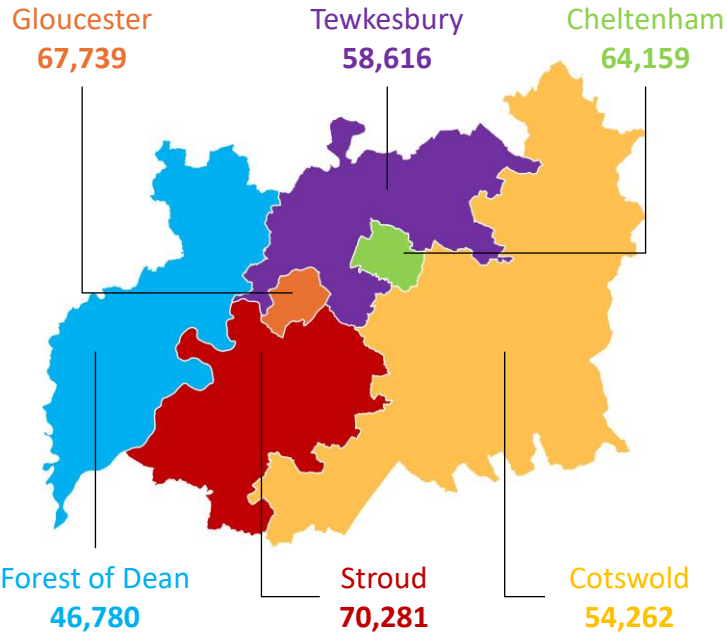


Household Projections 2022 – 2047

Projected Year:
2047

Number of Households 2047

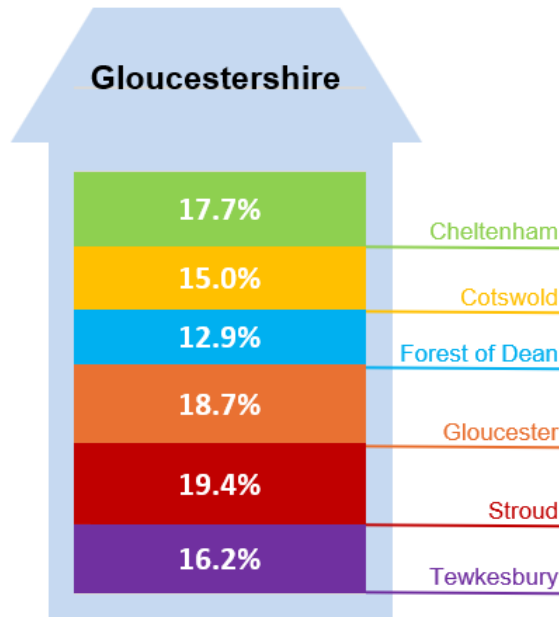
By 2047, Gloucestershire is projected to have **361,837** households.



By 2047, **Stroud** is projected to have the highest number of households of all districts, at **70,281**.

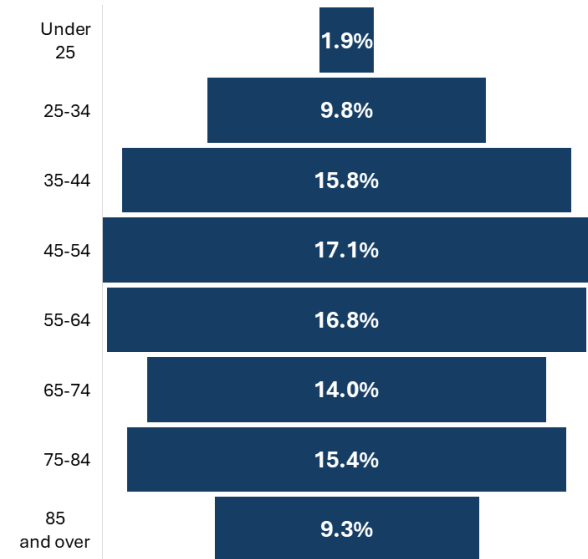
Percentage of Households 2047

By 2047, **Stroud District** is projected to have the largest share of households in Gloucestershire (19.4%)



Percentage of Heads of Households by Age 2047

By 2047, the highest proportion of Gloucestershire households (**17.1%**) is projected to be headed by someone aged **45-54** years old.

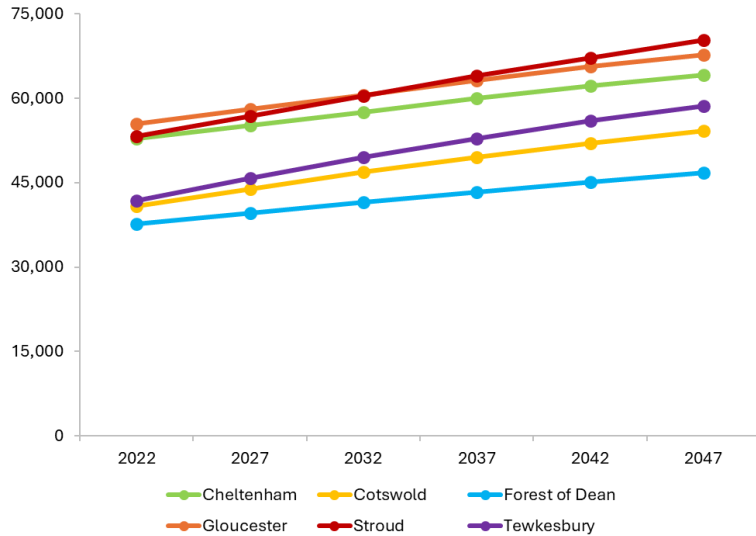


Household Projections 2022 – 2047

Projected Years:
2022-2047

Projected Number of Households 2022 to 2047

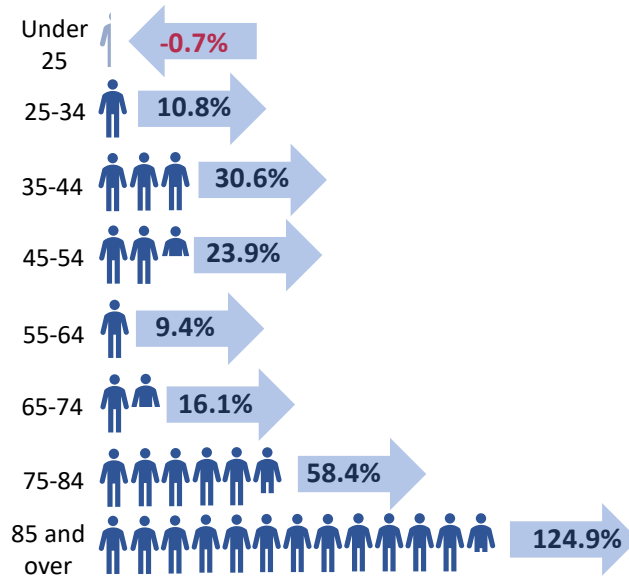
Stroud District is projected to have the highest household growth (**17,069 households**) of all six districts over the next 25 years.



Gloucestershire is projected to have **361,837 households** in total by 2047.

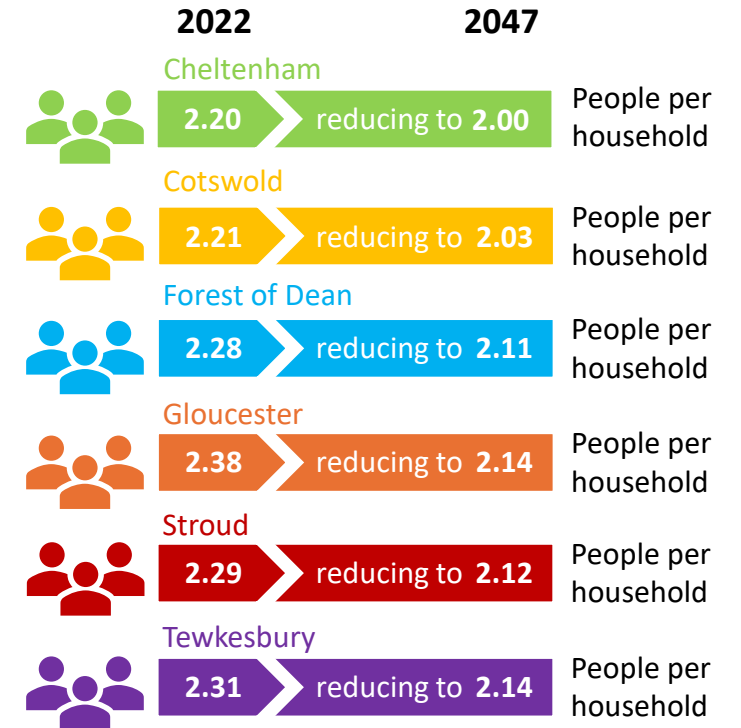
Change in Age Profiles of Households

In Gloucestershire, household growth between 2022 and 2047 is projected to be concentrated in the older age groups.



The largest percentage increases are projected to be in households aged 75-84 (58.4%) and 85+ (124.9%).

Average Household Size 2022 to 2047



It is estimated that the average household size in **Gloucestershire** is **2.28**, reducing to **2.09** in 2047.