

Unemployment Bulletin

Issue 180 July 2023

Contents

Part 1: Summary A summary of unemployment data at district, County, regional and national level	1
Part 2: County Unemployment figures for the County compared to the South West and the rest of the UK	3
Part 3: Districts A comparative break down of unemployment figures by district	4
Part 4: Wards Further breakdown of unemployment figures by ward:	
Cheltenham	6
Cotswolds	8
Forest of Dean	10
Gloucester	12
Stroud	14
Tewkesbury	16
Part 5: Map Distribution of claimant rate across Gloucestershire	18
Part 6: Youth Unemployment Unemployment data for the 18-24 year old age group	20
Part 7: Young People Data about Young People Not in Education, Employment or Training (NEET)	21

The Claimant Count is a measure of the number of people who are unemployed and claiming benefits. From 1996 until the recent introduction of Universal Credit, this was based on the number of people claiming Jobseeker's Allowance. However, since its introduction some unemployment benefit claimants will be claiming Universal Credit instead. **To reflect this change, the Claimant Count has been expanded to include people claiming Jobseeker's Allowance plus those who claim Universal Credit and who are searching for work.**

Gloucestershire is in the process of transitioning to full Universal Credit. This means a broader span of claimants will be required to look for work than previously under Jobseekers Allowance. As more people are brought within the coverage of Universal Credit, the Claimant Count is set to rise noticeably over time. This will happen irrespective of how the economy performs and is a feature of the design of Universal Credit which brings additional groups of people into 'Searching for Work' conditionality (and therefore the Claimant Count), to help encourage and support these claimants into work.

For more information about Universal Credit please see the [ONS website](#).

INTRODUCTION

The Unemployment Bulletin provides a monthly update on unemployment data for Gloucestershire, the South West region and the United Kingdom. It is produced by the Data & Analysis Team in the County Council's Planning, Performance and Change function. The data are sourced from the Office for National Statistics via Nomis (www.nomis.co.uk). All data are rounded to the nearest 5 and may not precisely add to the sum of the number of people claiming JSA, and the number of people claiming Universal Credit required to seek work, due to independent rounding.

PART 1: SUMMARY

The claimant rate in Gloucestershire was 2.4% in July 2023. The South West rate remained at 2.5% while the UK rate increased to 3.7%. Gloucestershire's rate was 0.1% lower than the South West average of 2.5%, and 1.3% lower than the UK average of 3.7%.

The claimant count in Gloucestershire in July 2023 increased by 375 people. The amount of people claiming in July 2023 was 4.2% higher than the number in June 2023. This compares to a 1.0% increase in the South West and a 1.8% increase in the UK.

Produced by:

Data & Analysis Team
Planning, Performance and Insight
Gloucestershire County Council
August 2023

DISTRICTS AT A GLANCE

At a glance unemployment information grouped by district. Includes:

Claimant count: Total number of people claiming Job Seekers Allowance and Universal Credit who are not in work in July 2023

Claimant count change on previous month: How much larger/smaller July's claimant count is compared to June expressed as a %

Claimant rate: The % of working age population claiming Job Seekers Allowance and Universal Credit who are not in work in July 2023

Highest claiming ward: The ward with the highest claim count in that district and the rate

CHELTEMHAM BOROUGH

Claimant count:	1,920
Claimant count change on previous month:	3.2%
Claimant rate:	2.5%
Highest claiming ward(s)	Hesters Way (5.2%)

GLOUCESTER CITY

Claimant count:	2,825
Claimant count change on previous month:	6.0%
Claimant rate:	3.3%
Highest claiming ward(s)	Westgate (7.0%)

COTSWOLD DISTRICT

Claimant count:	860
Claimant count change on previous month:	-0.6%
Claimant rate:	1.6%
Highest claiming ward(s)	Watermoor (3.9%)

STROUD DISTRICT

Claimant count:	1,190
Claimant count change on previous month:	1.3%
Claimant rate:	1.6%
Highest claiming ward(s)	Stroud Central (4.5%)

FOREST OF DEAN

Claimant count:	1,230
Claimant count change on previous month:	2.9%
Claimant rate:	2.4%
Highest claiming ward(s)	Cinderford West (4.1%)

TEWKESBURY BOROUGH

Claimant count:	1,230
Claimant count change on previous month:	8.8%
Claimant rate:	2.2%
Highest claiming ward(s)	Tewkesbury South (3.6%)

PART 2: UK, SW AND GLOUCESTERSHIRE INDICATORS

The unemployment situation in Gloucestershire compared to the South West and the UK.

Claimant Rate

Figure 1: Claimant Rate for Gloucestershire, the South West and UK over the past year

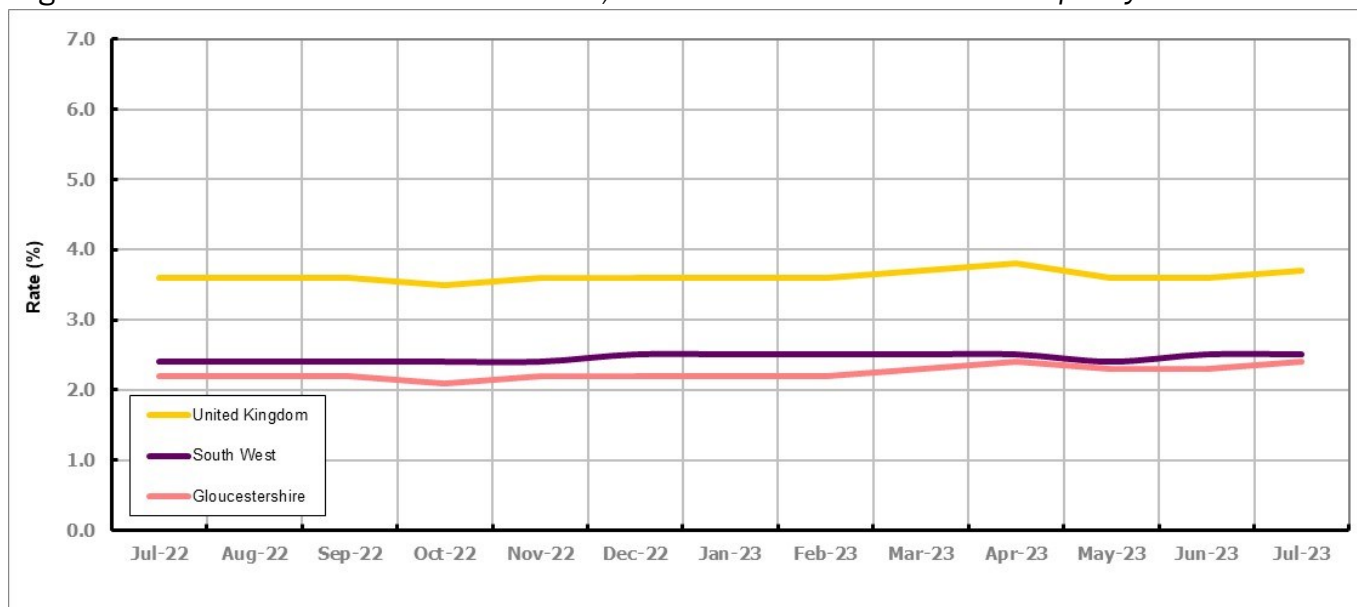


Figure 1 shows the claimant rate for Gloucestershire at 2.4% in July 2023. The Gloucestershire rate has been lower than the South West average since December 2015, with the exception of April and May 2016 when it was the same. On average, it has been approximately 1.4% lower than the UK average since the same month of the previous year.

Claimant Count

Table 1: Analysis of UK, South West and Gloucestershire Claimant Counts

Area	Claimant Count in July 2023	% change on June 2023	Consecutive months increasing
UK	1,564,510	1.8%	1
South West	86,015	1.0%	1
Gloucestershire	9,260	4.2%	0

Table 1 shows that in July 2023, the number of claimants in Gloucestershire was 4.2% higher than the number in June 2023.

PART 3: LOCAL AUTHORITY DISTRICT ANALYSIS

Claimant Rate and Claimant Count

Figure 2: Claimant Rate (%) across Gloucestershire - July 2023

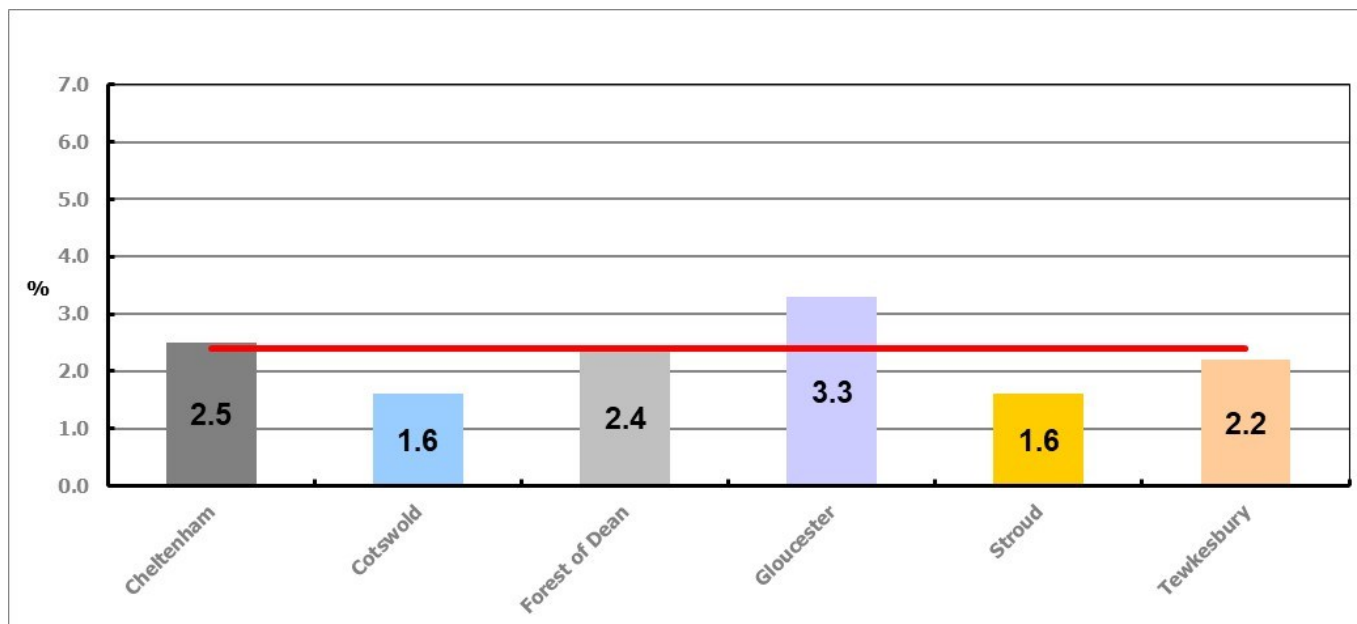


Figure 2 shows the claimant rate for July 2023 in Gloucestershire. Between June and July 2023 the rate remained the same in all districts except Forest of Dean, Gloucester and Tewkesbury where there was an increase.

Table 2: Analysis of Gloucestershire and District Claimant Counts

Total	Jul 23 Number	Jul 23 Rate	Jun 23 Number	Jun 23 Rate	Monthly change	% monthly change	Monthly change of rate
Gloucestershire	9,260	2.4	8,885	2.3	375	4.2%	0.1
Cheltenham	1,920	2.5	1,860	2.5	60	3.2%	0.0
Cotswold	860	1.6	865	1.6	-5	-0.6%	0.0
Forest of Dean	1,230	2.4	1,195	2.3	35	2.9%	0.1
Gloucester	2,825	3.3	2,665	3.1	160	6.0%	0.2
Stroud	1,190	1.6	1,175	1.6	15	1.3%	0.0
Tewkesbury	1,230	2.2	1,130	2.0	100	8.8%	0.2

Table 2 shows the change in the claimant count in July 2023 compared to June 2023. All districts saw an increase in the number of claimants except Cotswold which saw a decrease.

Table 3: Analysis of Male Gloucestershire and District Claimant Counts

Male	Jul 23 Number	Jul 23 Rate	Jun 23 Number	Jun 23 Rate	Monthly change	% monthly change	Monthly change of rate
Gloucestershire	5,050	2.6	4,915	2.5	135	2.7%	0.1
Cheltenham	1,105	2.9	1,085	2.9	20	1.8%	0.0
Cotswold	430	1.7	450	1.8	-20	-4.4%	-0.1
Forest of Dean	640	2.5	635	2.5	5	0.8%	0.0
Gloucester	1,625	3.8	1,555	3.7	70	4.5%	0.1
Stroud	620	1.7	580	1.6	40	6.9%	0.1
Tewkesbury	630	2.3	605	2.2	25	4.1%	0.1

Table 3 shows the change in the male claimant count in July 2023 compared to June 2023. All districts saw an increase in the number of male claimants except Cotswold which saw a decrease.

Table 4: Analysis of Female Gloucestershire and District Claimant Counts

Female	Jul 23 Number	Jul 23 Rate	Jun 23 Number	Jun 23 Rate	Monthly change	% monthly change	Monthly change of rate
Gloucestershire	4,210	2.1	3,970	2.0	240	6.0%	0.1
Cheltenham	810	2.1	775	2.1	35	4.5%	0.0
Cotswold	435	1.6	410	1.5	25	6.1%	0.1
Forest of Dean	590	2.3	560	2.1	30	5.4%	0.2
Gloucester	1,200	2.8	1,110	2.6	90	8.1%	0.2
Stroud	570	1.6	590	1.6	-20	-3.4%	0.0
Tewkesbury	600	2.1	520	1.8	80	15.4%	0.3

Table 4 shows the change in the female claimant count in July 2023 compared to June 2023. All districts saw an increase in the number of female claimants except Stroud which saw a decrease.

PART 4: LOCAL AUTHORITY DISTRICT AND WARD ANALYSIS

This section covers the six districts and a comparison of their constituent wards.

4.1 Cheltenham Borough

Claimant Rate and Claimant Count

Figure 3: Cheltenham Borough claimant rate over the last year

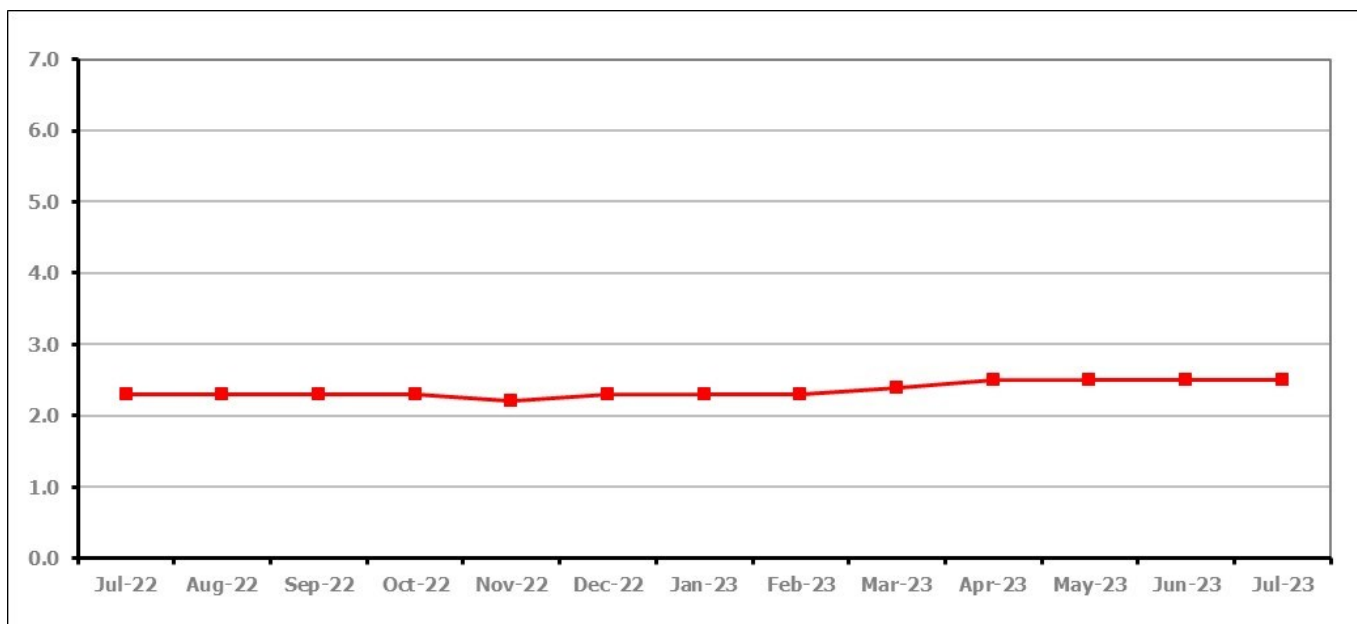


Figure 3 shows the claimant rate in Cheltenham remained at 2.5% in July 2023.

Figure 4: Claimant rates across Cheltenham Borough wards - July 2023

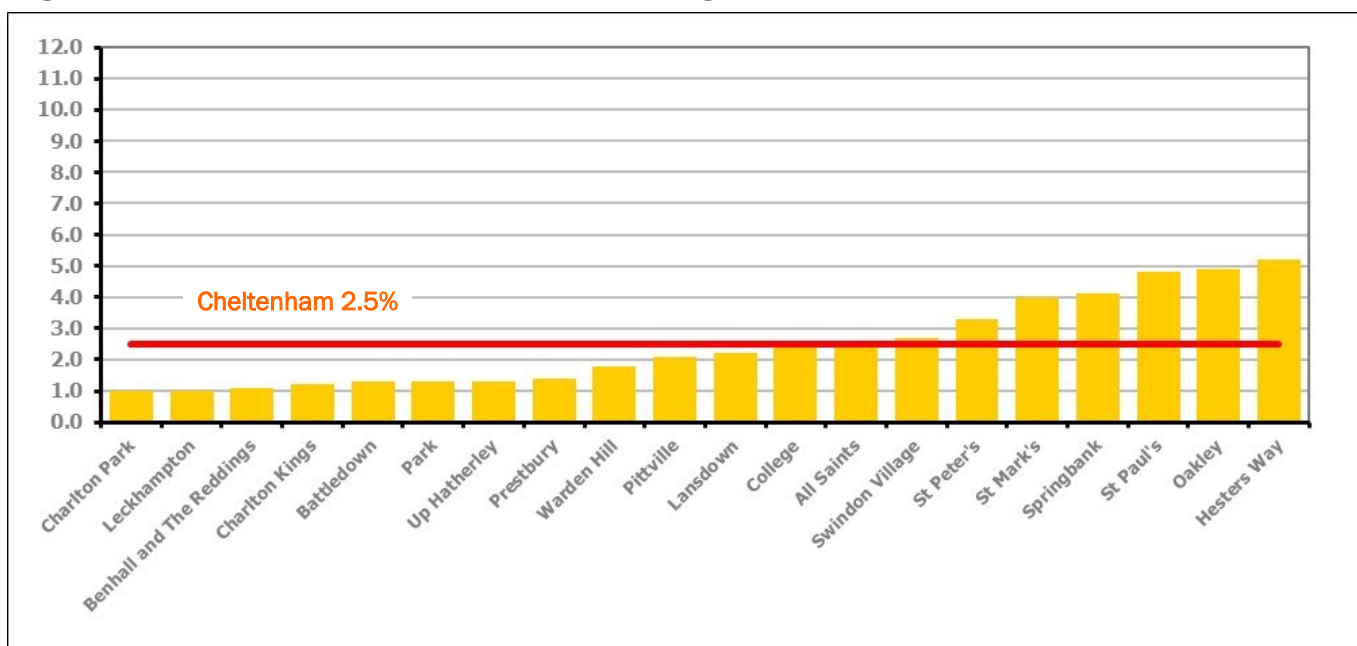


Figure 4 shows the claimant rates for Cheltenham Borough wards. The red line represents the average claimant rate across the Borough of 2.5%. Seven wards lie above the average.

PART 4: LOCAL AUTHORITY DISTRICT AND WARD ANALYSIS

4.1 Cheltenham Borough continued...

Table 5: Analysis of Claimant Count at Cheltenham Borough ward level - July 2023

District	Ward	Rate	Rank*
Cheltenham	Charlton Park	1.0	7
Cheltenham	Leckhampton	1.0	7
Cheltenham	Benhall and The Reddings	1.1	10
Cheltenham	Charlton Kings	1.2	14
Cheltenham	Battledown	1.3	26
Cheltenham	Park	1.3	26
Cheltenham	Up Hatherley	1.3	26
Cheltenham	Prestbury	1.4	35
Cheltenham	Warden Hill	1.8	64
Cheltenham	Pittville	2.1	82
Cheltenham	Lansdown	2.2	85
Cheltenham	College	2.4	98
Cheltenham	All Saints	2.5	101
Cheltenham	Swindon Village	2.7	111
Cheltenham	St Peter's	3.3	120
Cheltenham	St Mark's	4.0	124
Cheltenham	Springbank	4.1	126
Cheltenham	St Paul's	4.8	132
Cheltenham	Oakley	4.9	133
Cheltenham	Hesters Way	5.2	135

	lowest 10% of county
	first quartile of county
	second quartile of county
	third quartile of county
	fourth quartile of county
	highest 10% of county

* 1 = "best" and 138 = "worst"

Table 5 shows overall claimant rates for Cheltenham Borough wards and their position relative to all wards in Gloucestershire.

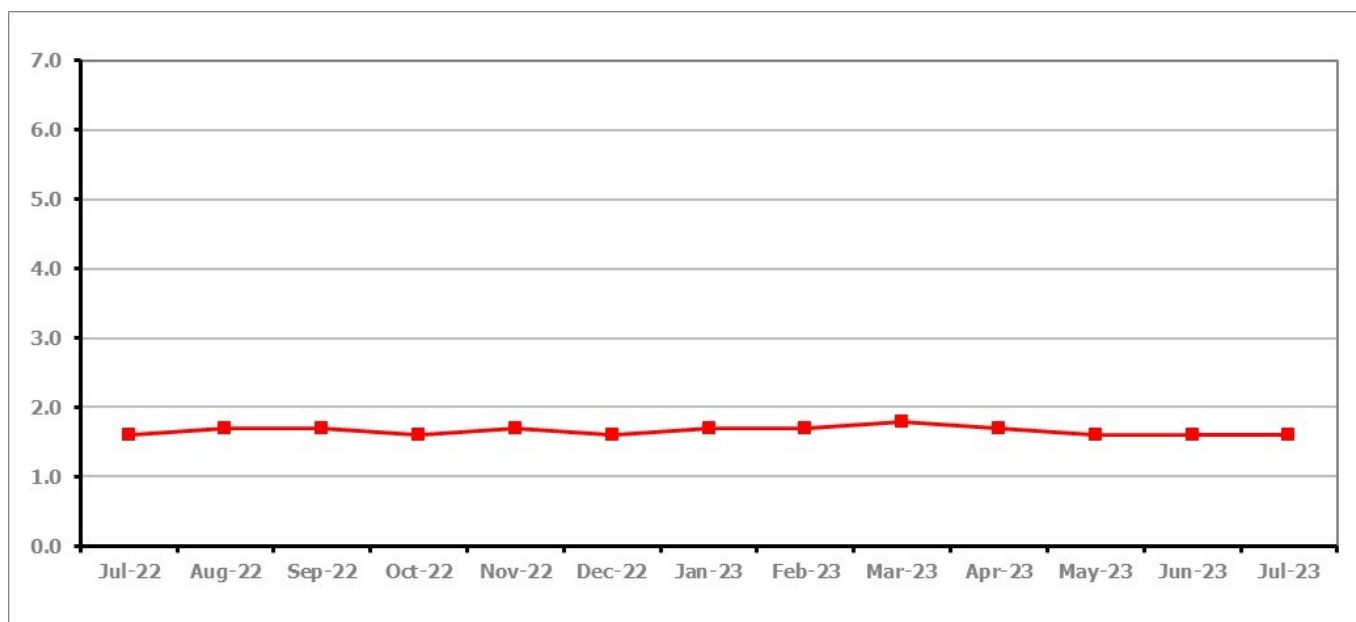
PART 4: LOCAL AUTHORITY DISTRICT AND WARD ANALYSIS**4.2 Cotswold District****Claimant Rate and Claimant Count***Figure 5: Cotswold District claimant rate over the last year*

Figure 5 shows the claimant rate in Cotswold District remained at 1.6% in July 2023.

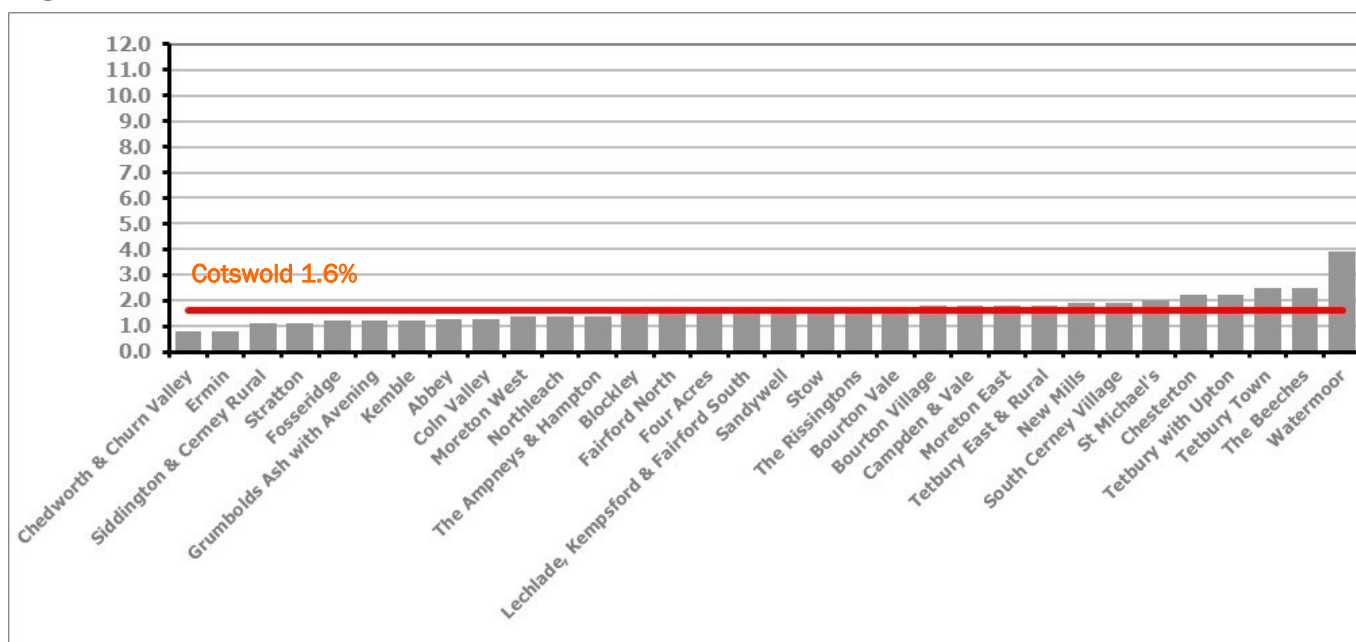
Figure 6: Claimant rates across Cotswold District wards - July 2023

Figure 6 shows the claimant rates for Cotswold District wards. The red line represents the average claimant rate across the District of 1.6%. Thirteen wards lie above the average.

PART 4: LOCAL AUTHORITY DISTRICT AND WARD ANALYSIS

4.2 Cotswold District continued...

Table 6: Analysis of Claimant Count at Cotswold District ward level - July 2023

District	Ward	Rate	Rank*
Cotswold	Chedworth & Churn Valley	0.8	1
Cotswold	Ermin	0.8	1
Cotswold	Siddington & Cerney Rural	1.1	10
Cotswold	Stratton	1.1	10
Cotswold	Fosseridge	1.2	14
Cotswold	Grumbolds Ash with Avening	1.2	14
Cotswold	Kemble	1.2	14
Cotswold	Abbey	1.3	26
Cotswold	Coln Valley	1.3	26
Cotswold	Moreton West	1.4	35
Cotswold	Northleach	1.4	35
Cotswold	The Ampneys & Hampton	1.4	35
Cotswold	Blockley	1.5	44
Cotswold	Fairford North	1.5	44
Cotswold	Four Acres	1.5	44
Cotswold	Lechlade, Kempsford & Fairford South	1.6	51
Cotswold	Sandywell	1.6	51
Cotswold	Stow	1.6	51
Cotswold	The Rissingtons	1.6	51
Cotswold	Bourton Vale	1.7	59
Cotswold	Bourton Village	1.8	64
Cotswold	Campden & Vale	1.8	64
Cotswold	Moreton East	1.8	64
Cotswold	Tetbury East & Rural	1.8	64
Cotswold	New Mills	1.9	72
Cotswold	South Cerney Village	1.9	72
Cotswold	St Michael's	2.0	78
Cotswold	Chesterton	2.2	85
Cotswold	Tetbury with Upton	2.2	85
Cotswold	Tetbury Town	2.5	101
Cotswold	The Beeches	2.5	101
Cotswold	Watermoor	3.9	123

	lowest 10% of county
	first quartile of county
	second quartile of county
	third quartile of county
	fourth quartile of county
	highest 10% of county

* 1 = "best" and 138 = "worst"

Table 6 shows overall claimant rates for Cotswold District wards and their position relative to all wards in Gloucestershire.

PART 4: LOCAL AUTHORITY DISTRICT AND WARD ANALYSIS

4.3 Forest of Dean District

Claimant Rate and Claimant Count

Figure 7: Forest of Dean District claimant rate over the last year

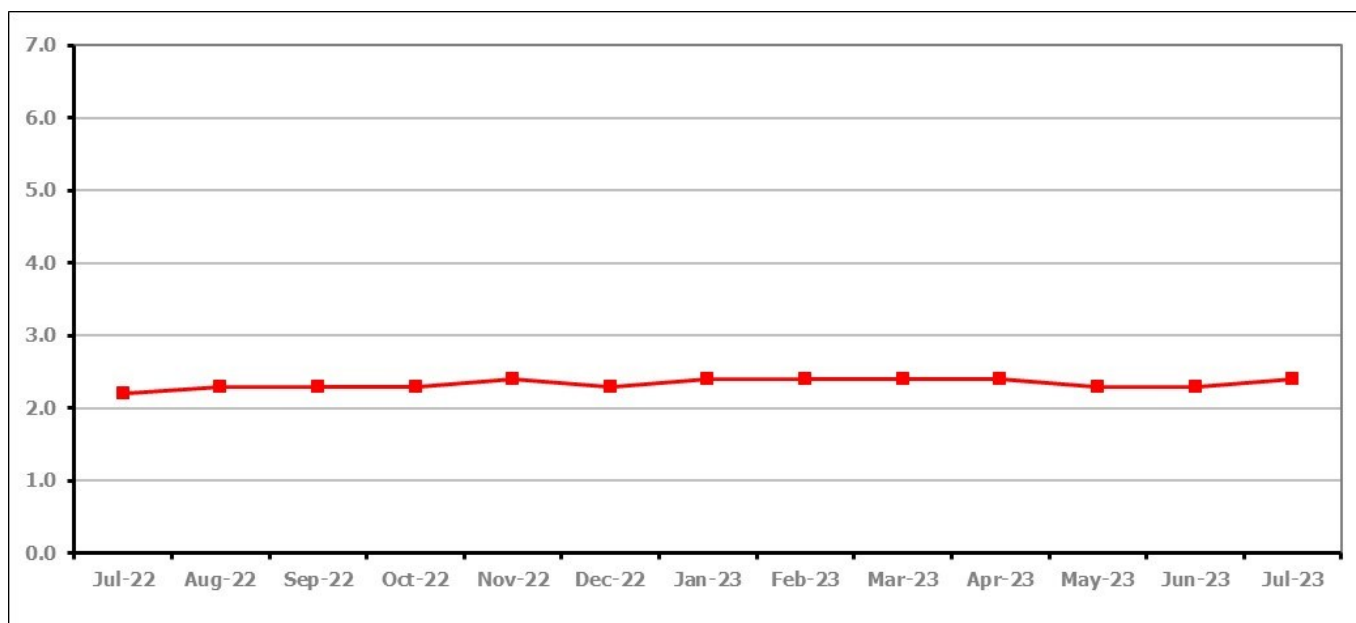


Figure 7 shows the claimant rate in the Forest of Dean increased to 2.4% in July 2023.

Figure 8: Claimant rates across Forest of Dean District wards - July 2023

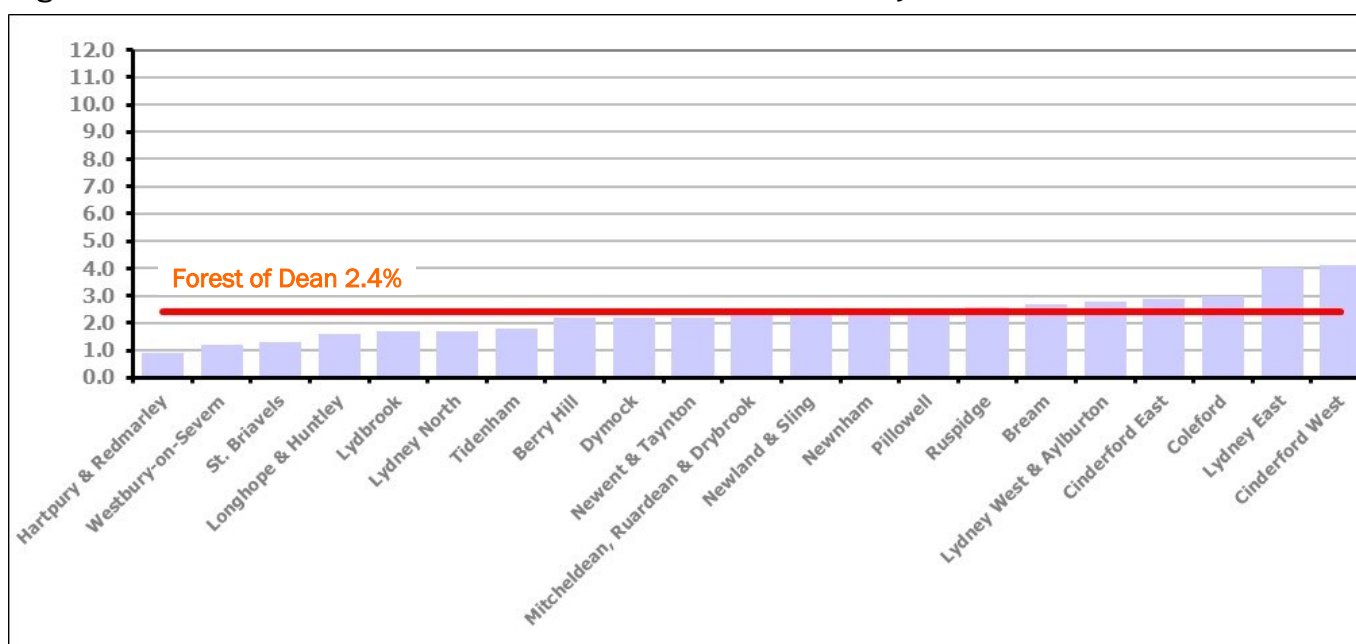


Figure 8 shows the claimant rates for the Forest of Dean District wards. The red line represents the average claimant rate across the District of 2.4%. Nine wards lie above the average.

PART 4: LOCAL AUTHORITY DISTRICT AND WARD ANALYSIS**4.3 Forest of Dean District continued...***Table 7: Analysis of Claimant Count at Forest of Dean District ward level - July 2023*

District	Ward	Rate	Rank*
Forest	Hartpur & Redmarley	0.9	4
Forest	Westbury-on-Severn	1.2	14
Forest	St. Briavels	1.3	26
Forest	Longhope & Huntley	1.6	51
Forest	Lydbrook	1.7	59
Forest	Lydney North	1.7	59
Forest	Tidenham	1.8	64
Forest	Berry Hill	2.2	85
Forest	Dymock	2.2	85
Forest	Newent & Taynton	2.2	85
Forest	Mitcheldean, Ruardean & Drybrook	2.3	93
Forest	Newland & Sling	2.4	98
Forest	Newnham	2.5	101
Forest	Pillowell	2.5	101
Forest	Ruspidge	2.6	108
Forest	Bream	2.7	111
Forest	Lydney West & Aylburton	2.8	113
Forest	Cinderford East	2.9	117
Forest	Coleford	3.0	118
Forest	Lydney East	4.0	124
Forest	Cinderford West	4.1	126

	lowest 10% of county
	first quartile of county
	second quartile of county
	third quartile of county
	fourth quartile of county
	highest 10% of county

* 1 = "best" and 138 = "worst"

Table 7 shows overall claimant rates for the Forest of Dean District wards and their position relative to all wards in Gloucestershire.

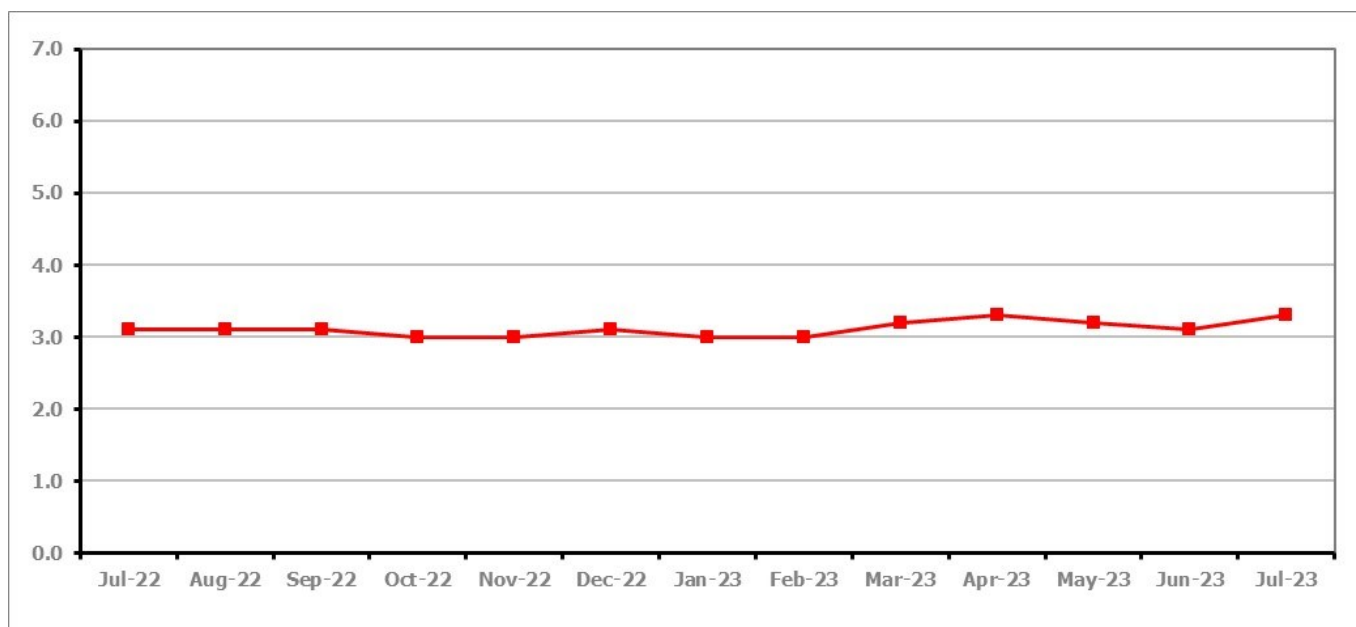
PART 4: LOCAL AUTHORITY DISTRICT AND WARD ANALYSIS**4.4 Gloucester City****Claimant Rate and Claimant Count***Figure 9: Gloucester City claimant rate over the last year*

Figure 9 shows the claimant rate for Gloucester City increased to 3.3% in July 2023.

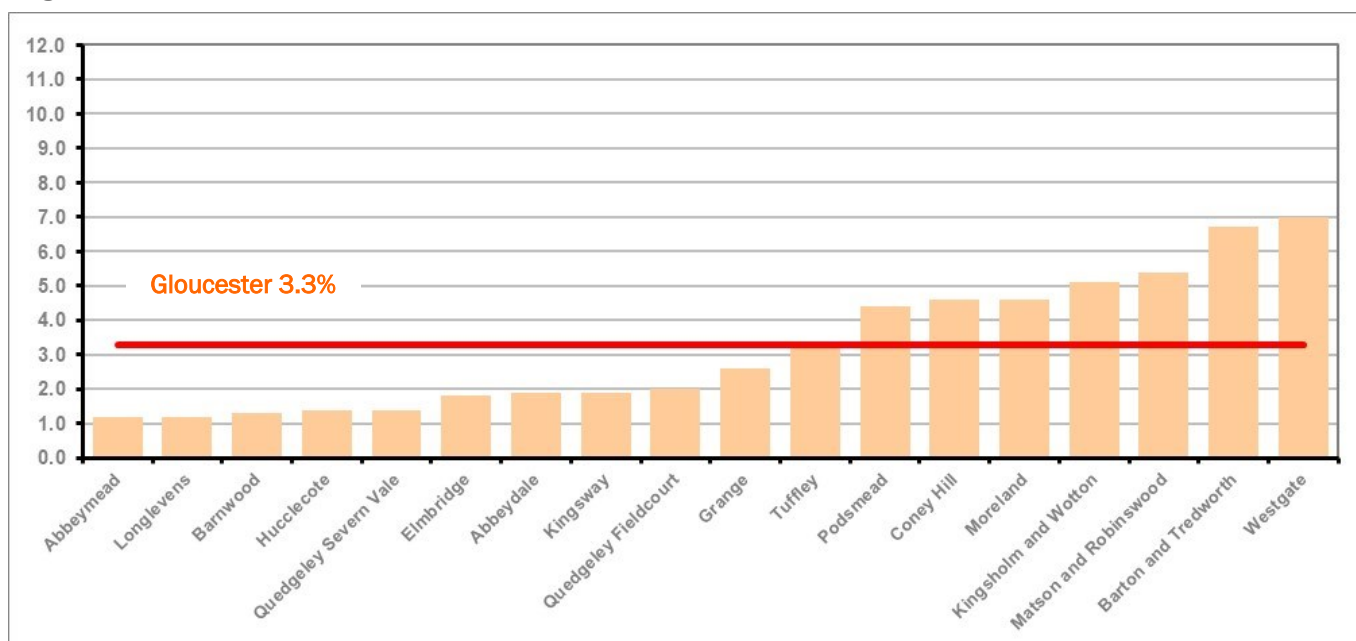
Figure 10: Claimant rates across Gloucester City wards - July 2023

Figure 10 shows the claimant rates for Gloucester City district wards. The red line represents the average claimant rate across the City of 3.3%. Seven wards lie above the average.

PART 4: LOCAL AUTHORITY DISTRICT AND WARD ANALYSIS**4.4 Gloucester City continued...***Table 8: Analysis of Claimant Count at Gloucester City ward level - July 2023*

District	Ward	Rate	Rank*
Gloucester	Abbeymead	1.2	14
Gloucester	Longlevens	1.2	14
Gloucester	Barnwood	1.3	26
Gloucester	Hucclecote	1.4	35
Gloucester	Quedgeley Severn Vale	1.4	35
Gloucester	Elmbridge	1.8	64
Gloucester	Abbeydale	1.9	72
Gloucester	Kingsway	1.9	72
Gloucester	Quedgeley Fieldcourt	2.0	78
Gloucester	Grange	2.6	108
Gloucester	Tuffley	3.3	120
Gloucester	Podsmead	4.4	128
Gloucester	Coney Hill	4.6	130
Gloucester	Moreland	4.6	130
Gloucester	Kingsholm and Wotton	5.1	134
Gloucester	Matson and Robinswood	5.4	136
Gloucester	Barton and Tredworth	6.7	137
Gloucester	Westgate	7.0	138

	lowest 10% of county
	first quartile of county
	second quartile of county
	third quartile of county
	fourth quartile of county
	highest 10% of county

* 1 = "best" and 138 = "worst"

Table 8 shows overall claimant rates for Gloucester City wards and their position relative to all wards in Gloucestershire.

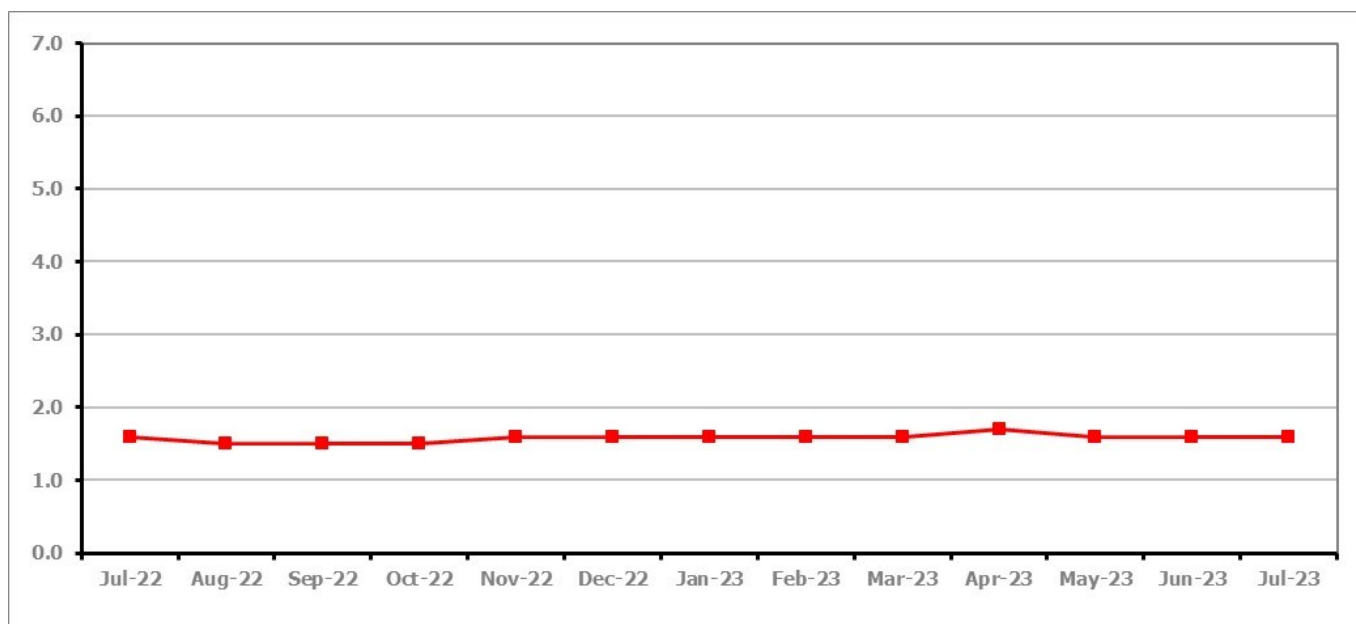
PART 4: LOCAL AUTHORITY DISTRICT AND WARD ANALYSIS**4.5 Stroud District****Claimant Rate and Claimant Count***Figure 11: Stroud District claimant rate over the last year*

Figure 11 shows the claimant rate for Stroud remained at 1.6% in July 2023.

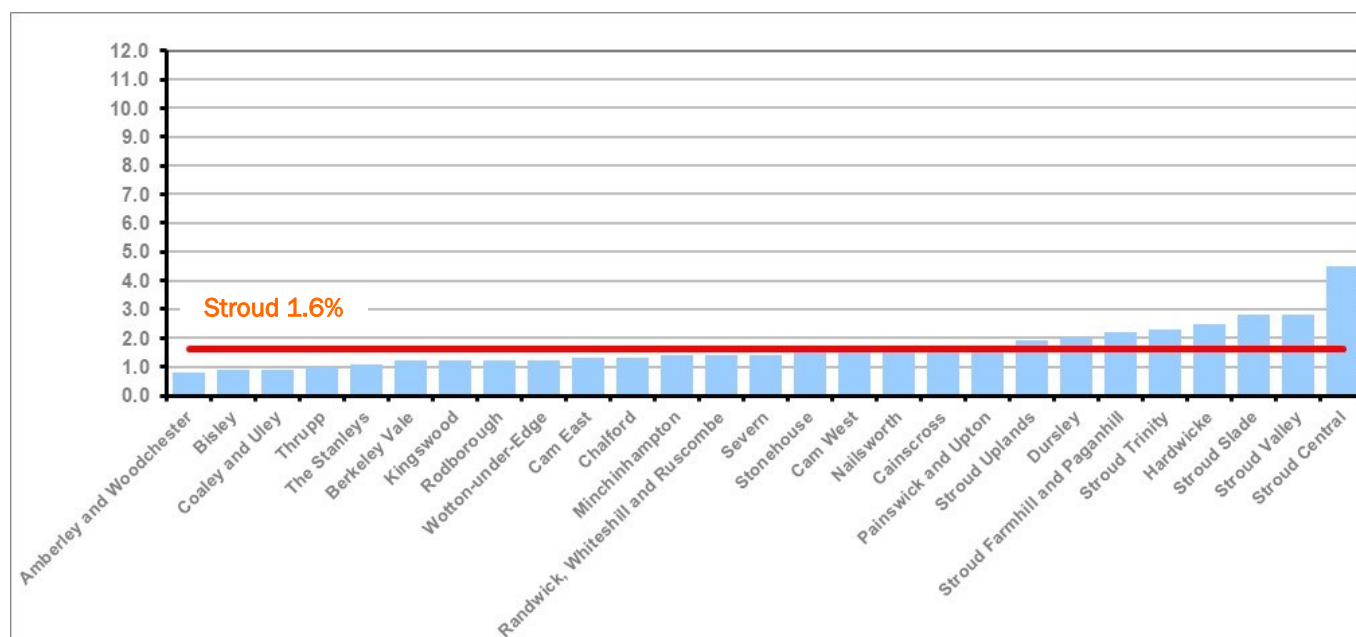
Figure 12: Claimant rates across Stroud District wards - July 2023

Figure 12 shows the claimant rates in Stroud District wards. The red line represents the average claimant rate across the District of 1.6%. Ten wards are above the average.

PART 4: LOCAL AUTHORITY AND DISTRICT ANALYSIS

4.5 Stroud District continued...

Table 9: Analysis of Claimant Count at Stroud District ward level - July 2023

District	Ward	Rate	Rank*
Stroud	Amberley and Woodchester	0.8	1
Stroud	Bisley	0.9	4
Stroud	Coaley and Uley	0.9	4
Stroud	Thrupp	1.0	7
Stroud	The Stanleys	1.1	10
Stroud	Berkeley Vale	1.2	14
Stroud	Kingswood	1.2	14
Stroud	Rodborough	1.2	14
Stroud	Wotton-under-Edge	1.2	14
Stroud	Cam East	1.3	26
Stroud	Chalford	1.3	26
Stroud	Minchinhampton	1.4	35
Stroud	Randwick, Whiteshill and Ruscombe	1.4	35
Stroud	Severn	1.4	35
Stroud	Stonehouse	1.5	44
Stroud	Cam West	1.6	51
Stroud	Nailsworth	1.6	51
Stroud	Cainscross	1.7	59
Stroud	Painswick and Upton	1.7	59
Stroud	Stroud Uplands	1.9	72
Stroud	Dursley	2.0	78
Stroud	Stroud Farmhill and Paganhill	2.2	85
Stroud	Stroud Trinity	2.3	93
Stroud	Hardwicke	2.5	101
Stroud	Stroud Slade	2.8	113
Stroud	Stroud Valley	2.8	113
Stroud	Stroud Central	4.5	129

	lowest 10% of county
	first quartile of county
	second quartile of county
	third quartile of county
	fourth quartile of county
	highest 10% of county

* 1 = "best" and 138 = "worst"

Table 9 shows overall claimant rates for Stroud District wards and their position relative to all wards in Gloucestershire.

PART 4: LOCAL AUTHORITY DISTRICT AND WARD ANALYSIS

4.6 Tewkesbury Borough

Claimant Rate and Claimant Count

Figure 13: Tewkesbury Borough claimant rate over the last year

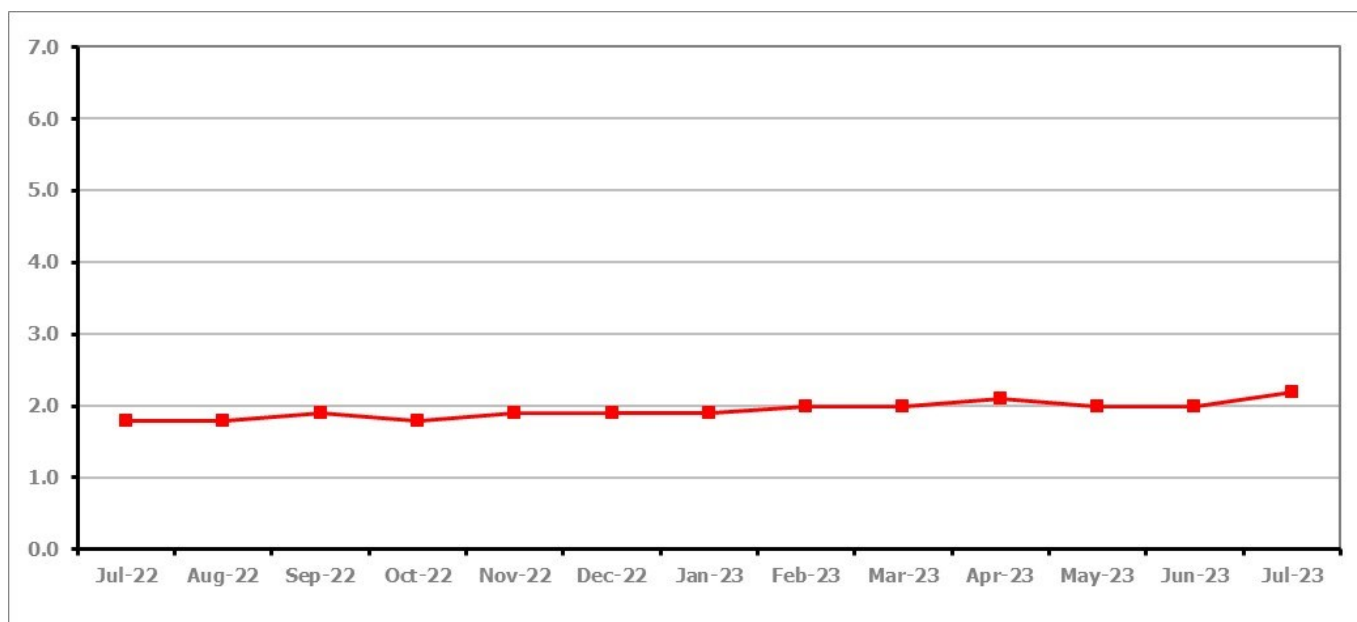


Figure 13 shows the claimant rate for Tewkesbury Borough increased to 2.2% in July 2023.

Figure 14: Claimant rates across Tewkesbury Borough wards - July 2023

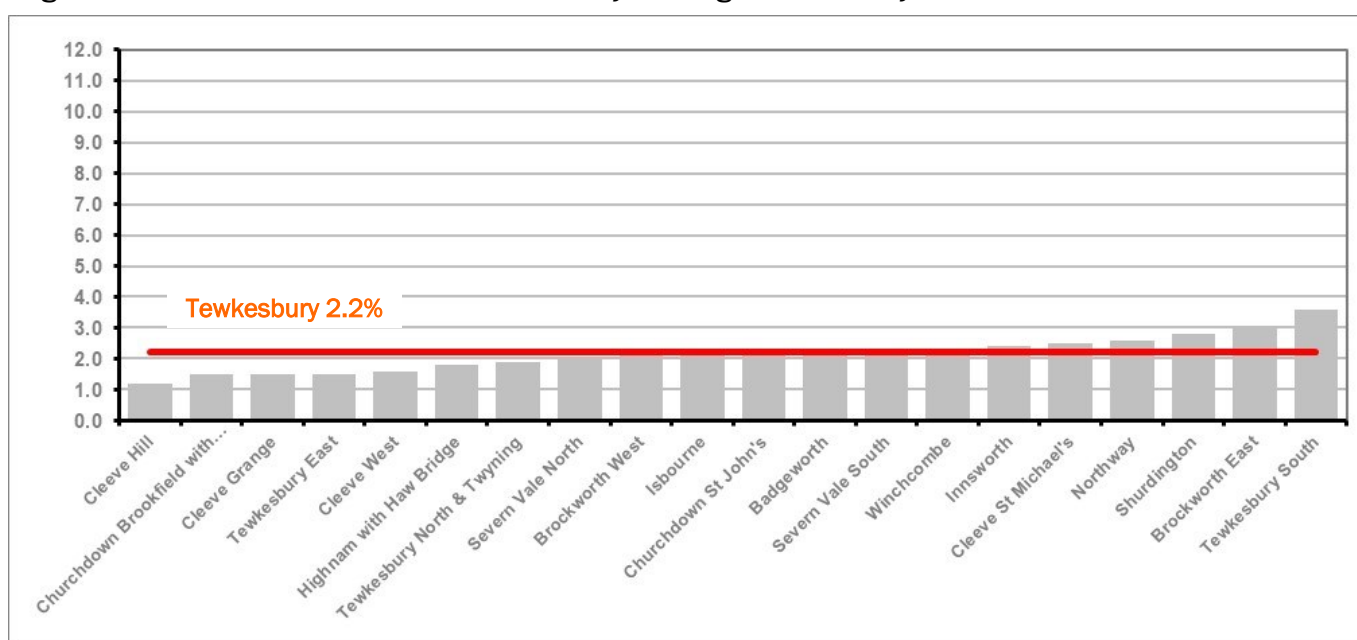


Figure 14 shows the claimant rates in Tewkesbury Borough wards. The red line represents the average claimant rate across the District of 2.2%. Nine wards are above the average.

PART 4: LOCAL AUTHORITY AND DISTRICT ANALYSIS

4.6 Tewkesbury Borough continued...

Table 10: Analysis of Claimant Count at Tewkesbury Borough level - July 2023

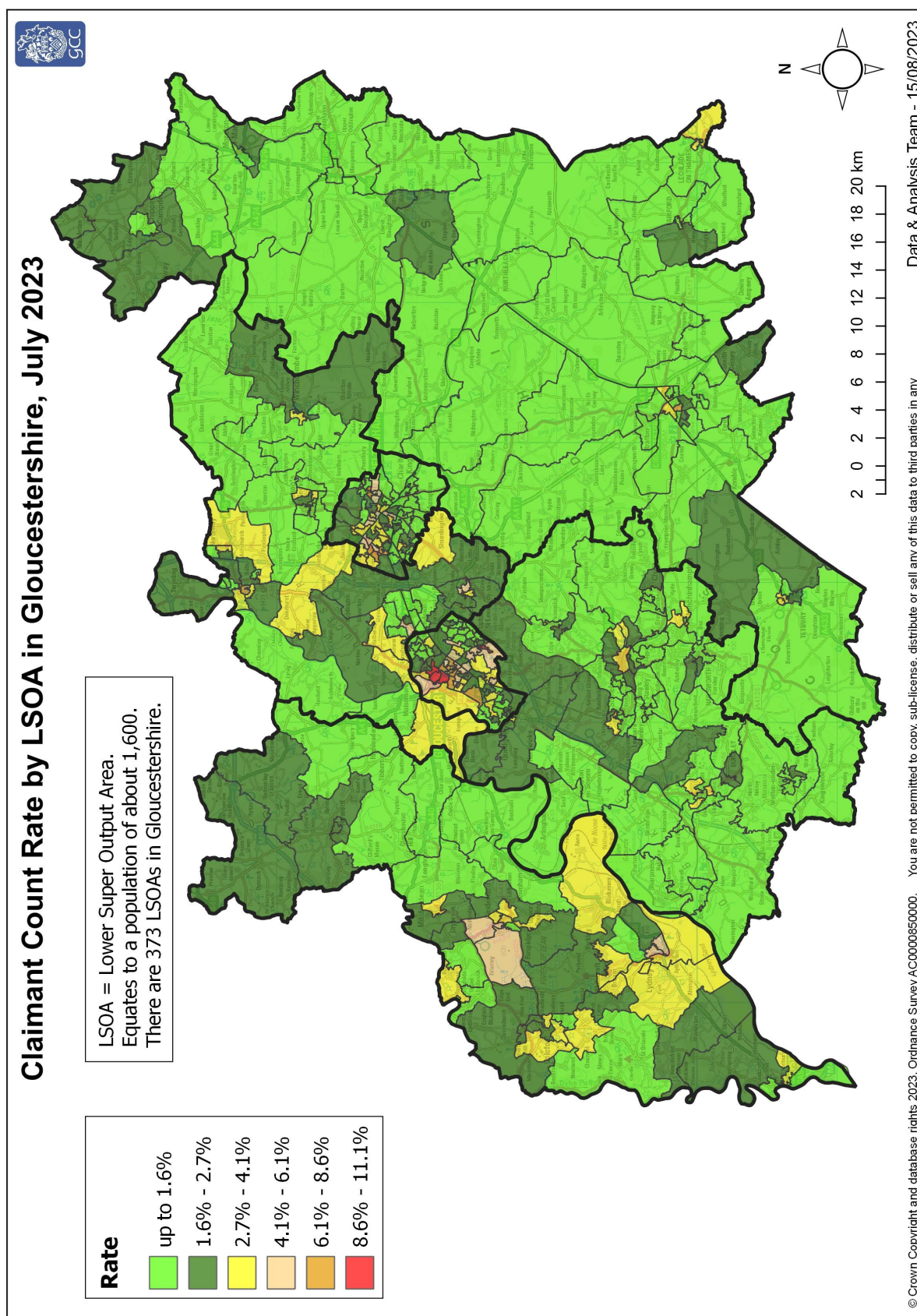
District	Ward	Rate	Rank*
Tewkesbury	Cleeve Hill	1.2	14
Tewkesbury	Churchdown Brookfield with Hucclecote	1.5	44
Tewkesbury	Cleeve Grange	1.5	44
Tewkesbury	Tewkesbury East	1.5	44
Tewkesbury	Cleeve West	1.6	51
Tewkesbury	Highnam with Haw Bridge	1.8	64
Tewkesbury	Tewkesbury North & Twyning	1.9	72
Tewkesbury	Severn Vale North	2.0	78
Tewkesbury	Brockworth West	2.1	82
Tewkesbury	Isbourne	2.1	82
Tewkesbury	Churchdown St John's	2.2	85
Tewkesbury	Badgeworth	2.3	93
Tewkesbury	Severn Vale South	2.3	93
Tewkesbury	Winchcombe	2.3	93
Tewkesbury	Innsworth	2.4	98
Tewkesbury	Cleeve St Michael's	2.5	101
Tewkesbury	Northway	2.6	108
Tewkesbury	Shurdington	2.8	113
Tewkesbury	Brockworth East	3.0	118
Tewkesbury	Tewkesbury South	3.6	122

	lowest 10% of county
	first quartile of county
	second quartile of county
	third quartile of county
	fourth quartile of county
	highest 10% of county

* 1 = "best" and 138 = "worst"

Table 10 shows overall claimant rates for Tewkesbury Borough wards and their position relative to all wards in Gloucestershire.

PART 5: MAP SHOWING DISTRIBUTION OF CLAIMANT RATE ACROSS GLOUCESTERSHIRE

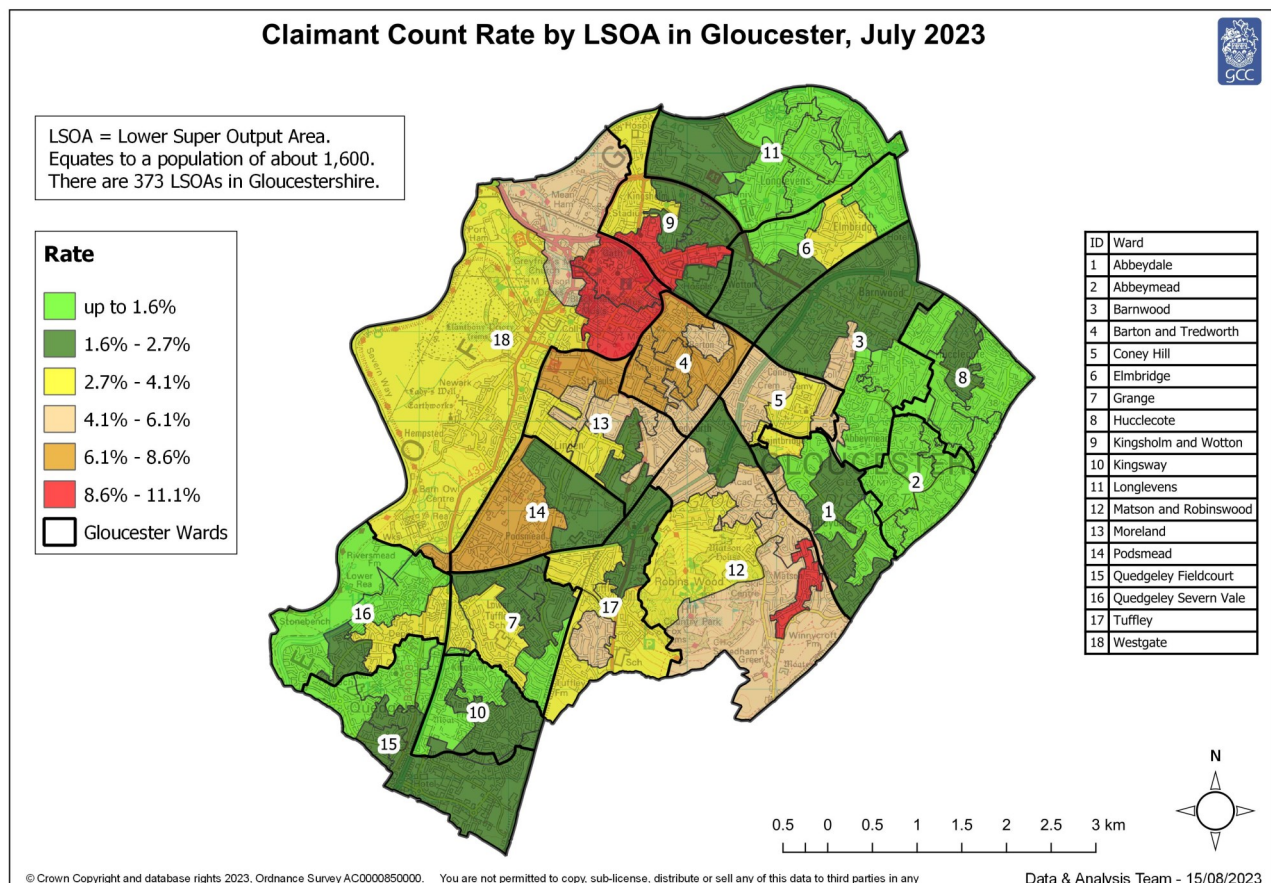
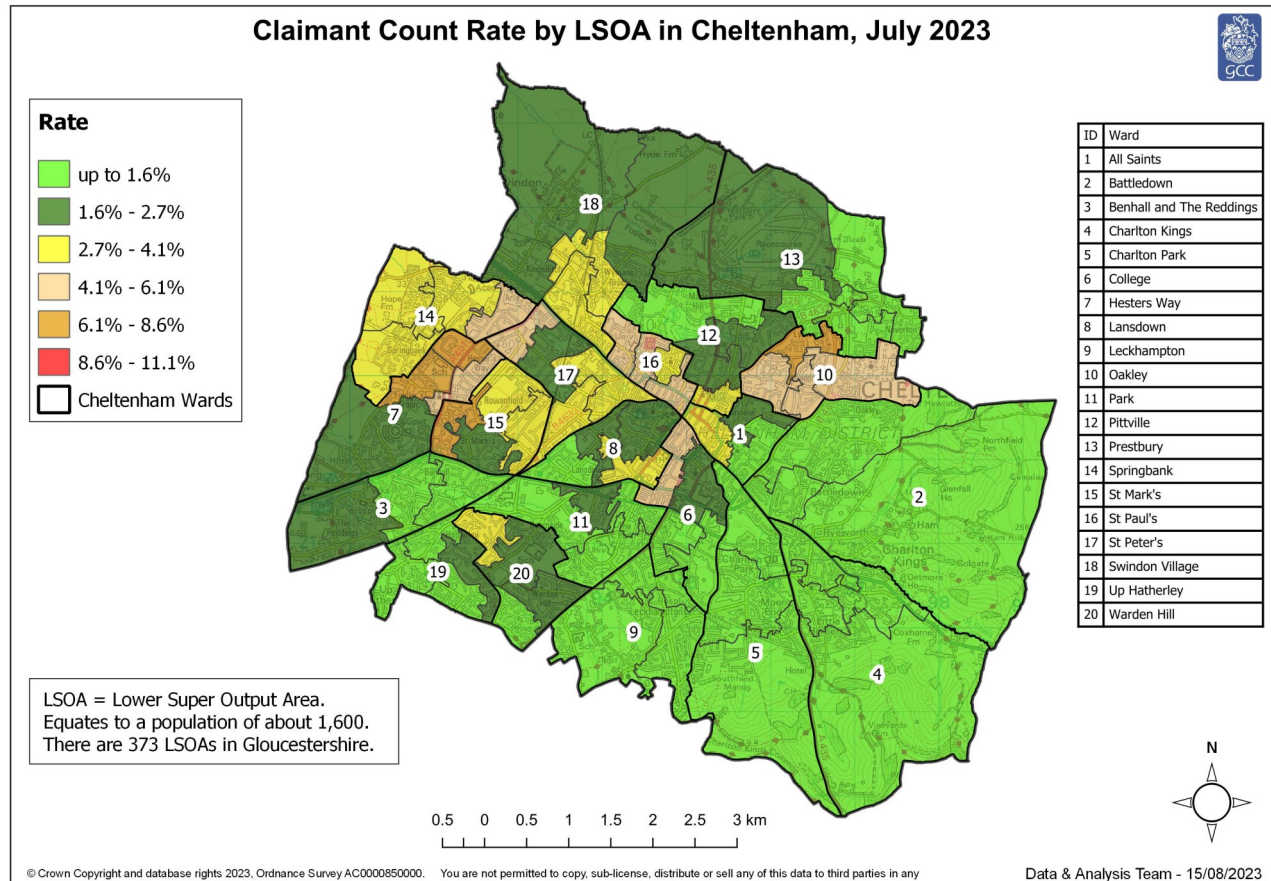


These maps currently show the 2011 LSOA boundaries.

Note: We have made changes to the way in which the rates illustrated on the maps are calculated - this means they are not comparable with those shown in previous bulletins.

Rates calculated using Lower Layer Super Output Area Population Estimates Mid-2020, Office for National Statistics

PART 5: MAP SHOWING DISTRIBUTION OF CLAIMANT RATE ACROSS GLOUCESTERSHIRE



These maps currently show the 2011 LSOA boundaries.

Note: We have made changes to the way in which the rates illustrated on the maps are calculated - this means they are not comparable with those shown in previous bulletins.

Rates calculated using Lower Layer Super Output Area Population Estimates Mid-2020, Office for National Statistics

PART 6: YOUTH UNEMPLOYMENT(18-24 year olds)

Youth Claimant Rate and Claimant Count

Figure 15: Claimant Count for Gloucestershire over the past year

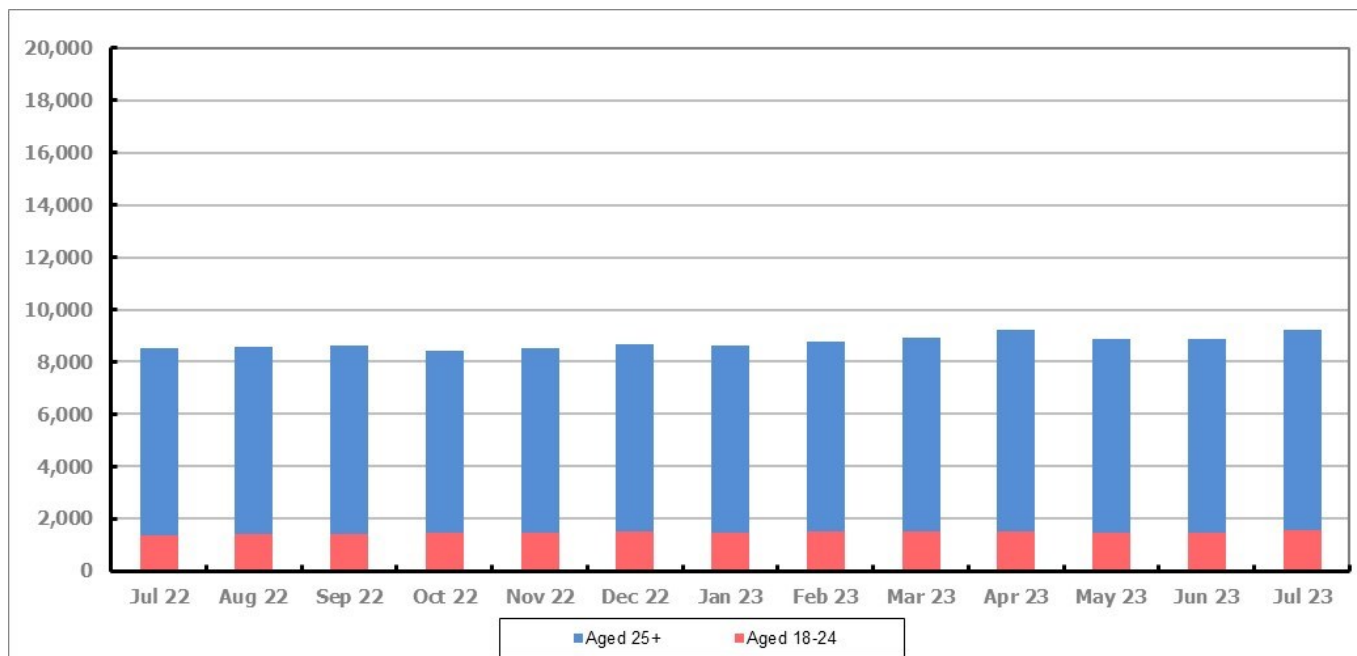


Figure 15 shows that in July 2023, 1,540 people aged 18-24 were claiming Job Seekers Allowance and Universal Credit who were not in work in Gloucestershire, this represents 16.6% of total working age claimants.

PART 7: YOUNG PEOPLE NOT IN EDUCATION, EMPLOYMENT OR TRAINING (NEET) IN GLOUCESTERSHIRE

Data provided by Gloucestershire Youth Support Team on the situation of young people (16-18) in Gloucestershire who are not in education, employment or formal training.

Gloucestershire Youth Support Team is required to report performance on the Academic Year 12 and 13 (16/17 age) against nationally defined criteria for counting the NEET group to the Department for Education (DfE) on a monthly basis. The NEET group includes young people actively seeking education, employment or training as well as those young people who are either not yet ready or who are unable to access these opportunities because of their personal circumstances. The figures quoted below include young people in both of these categories.

July 2023

Academic Year 12-13 Summary

	NEET	Cohort	%
Cheltenham	59	2162	2.73%
Cotswold	19	1696	1.12%
Forest	46	1721	2.67%
Gloucester	147	3183	4.62%
Stroud	39	2653	1.47%
Tewkesbury	40	2008	1.99%
Total	350	13423	2.61%

16-18 Age Summary

	NEET	Cohort	%
Cheltenham	60	2268	2.65%
Cotswold	19	1777	1.07%
Forest	48	1782	2.69%
Gloucester	151	3310	4.56%
Stroud	43	2771	1.55%
Tewkesbury	42	2110	1.99%
Total	363	14018	2.59%

16-18 Adjust NEET*	3.34%
--------------------	-------

Monthly Change	-8	13	-0.06%
Previous month	358	13410	2.67%

Monthly Change	-23	-503	-0.07%
Previous month	386	14521	2.66%

The academic year 12-13 group contains a proportion of young people who turn 18 in the academic year but were 17 on the 31st August the previous academic year so are entitled to learning through RPA (raising participation age).

Please note all figures quoted above are subject to change before the submission date to the DfE which usually happens in the second or third week of the month for the previous month.

If you would like to receive any further information on Gloucestershire's NEET strategy, then please contact Lynne.Speak@Prospects.co.uk or telephone 07900 391182.

(*) Adjustment includes a proportion of young people aged 16-18 whose outcomes are not-known to Gloucestershire Youth Support Team.