

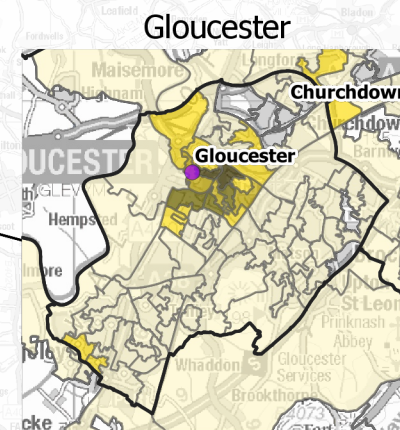
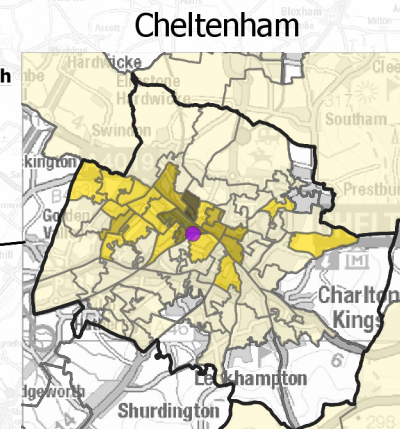
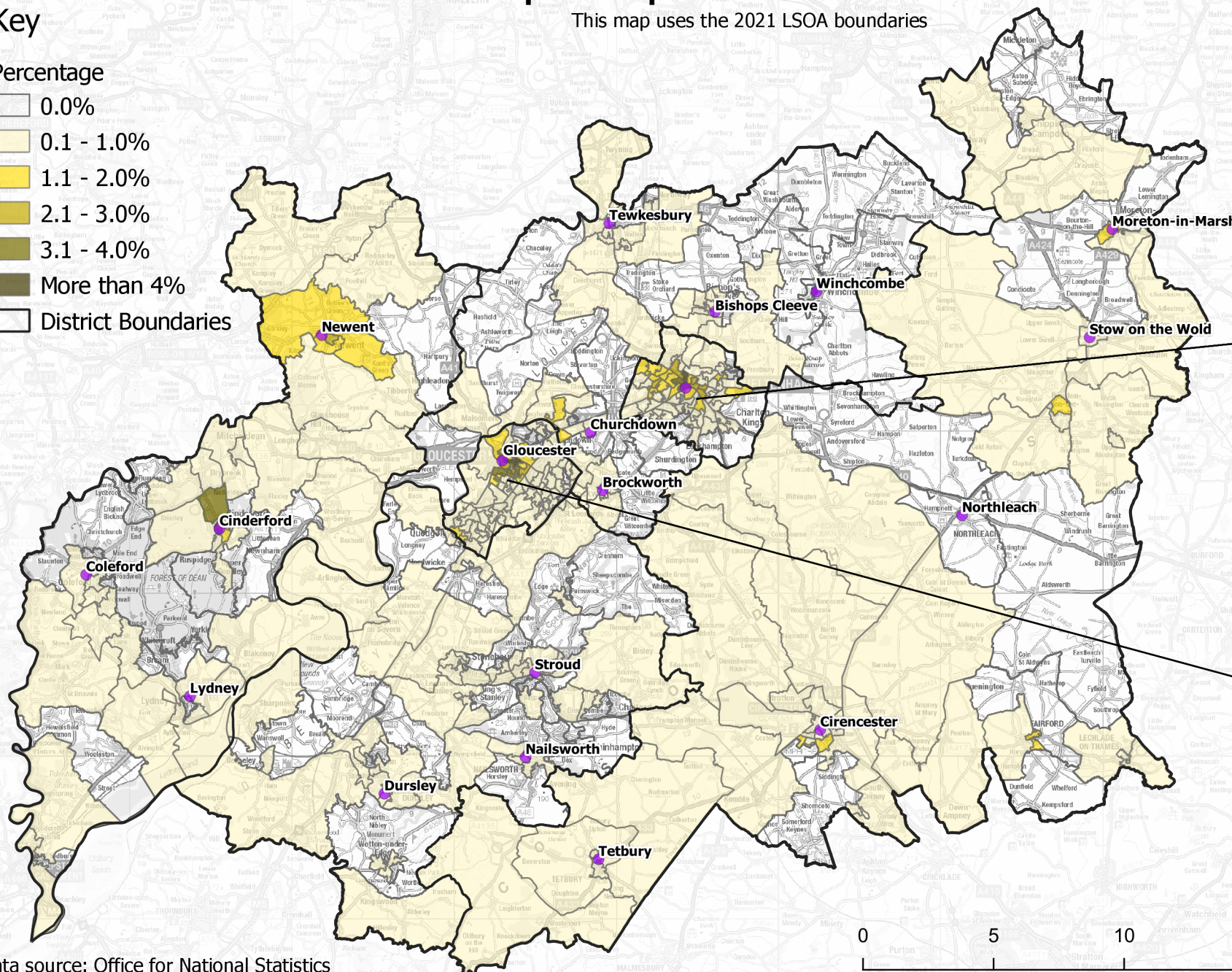
# Proportion of Residents with a Romanian Passport in Gloucestershire at Lower Super Output Area Level - Census 2021

This map uses the 2021 LSOA boundaries

## Key

### Percentage

- 0.0%
- 0.1 - 1.0%
- 1.1 - 2.0%
- 2.1 - 3.0%
- 3.1 - 4.0%
- More than 4%
- District Boundaries



Data source: Office for National Statistics

© Crown Copyright and database rights 2022, Ordnance Survey 100019134.

You are not permitted to copy, sub-license, distribute or sell any of this data to third parties in any form

G Browne - 02/12/2022