

Unemployment Bulletin

Issue 140 March 2020

Contents

Part 1: Summary A summary of unemployment data at district, County, regional and national level	1
Part 2: County Unemployment figures for the County compared to the South West and the rest of the UK	3
Part 3: Districts A comparative break down of unemployment figures by district	4
Part 4: Wards Further breakdown of unemployment figures by ward:	
Cheltenham	6
Cotswolds	8
Forest of Dean	10
Gloucester	12
Stroud	14
Tewkesbury	16
Part 5: Map Distribution of claimant rate across Gloucestershire	18
Part 6: Youth Unemployment Unemployment data for the 18-24 year old age group	20
Part 7: Young People Data about Young People Not in Education, Employment or Training (NEET)	21

The Claimant Count is a measure of the number of people who are unemployed and claiming benefits. From 1996 until the recent introduction of Universal Credit, this was based on the number of people claiming Jobseeker's Allowance. However, since its introduction some unemployment benefit claimants will be claiming Universal Credit instead. **To reflect this change, the Claimant Count has been expanded to include people claiming Jobseeker's Allowance plus those who claim Universal Credit and who are searching for work.**

Gloucestershire is in the process of transitioning to full Universal Credit. This means a broader span of claimants will be required to look for work than previously under Jobseekers Allowance. As more people are brought within the coverage of Universal Credit, the Claimant Count is set to rise noticeably over time. This will happen irrespective of how the economy performs and is a feature of the design of Universal Credit which brings additional groups of people into 'Searching for Work' conditionality (and therefore the Claimant Count), to help encourage and support these claimants into work.

For more information about Universal Credit please see the [ONS website](#).

The claimant count figures contained in this release refer to the reference period of the 12th March, so will not reflect changes since this date.

INTRODUCTION

The Unemployment Bulletin provides a monthly update on unemployment data for Gloucestershire, the South West region and the United Kingdom. It is produced by the Data & Analysis Team in the County Council's Planning, Performance and Change function. The data are sourced from the Office for National Statistics via Nomis (www.nomis.co.uk). All data are rounded to the nearest 5 and may not precisely add to the sum of the number of people claiming JSA, and the number of people claiming Universal Credit required to seek work, due to independent rounding.

PART 1: SUMMARY

The claimant rate in Gloucestershire was 2.1% in March 2020. The South West and UK rates increased to 2.3% and 3.1% respectively. Gloucestershire's rate was 0.2% lower than the South West average of 2.3%, and 1.0% lower than the UK average of 3.1%.

The claimant count in Gloucestershire in March 2020 decreased by 5 people. The amount of people claiming in March 2020 was 0.1% lower than the number in February 2020. This compares to a 0.7% increase in the South West and a 1.6% increase for the UK.

Produced by:

Data & Analysis Team
Planning, Performance and Change
Gloucestershire County Council
April 2020

DISTRICTS AT A GLANCE

At a glance unemployment information grouped by district. Includes:

Claim count: Total number of people claiming Job Seekers Allowance and Universal Credit who are not in work in March 2020

Compared to last month: How much larger/smaller March's claimant count is compared to February expressed as a %

Claimant rate: The % of working age population claiming Job Seekers Allowance and Universal Credit who are not in work in March 2020

Highest claiming ward: The ward with the highest claim count in that district and the rate

CHELTENHAM BOROUGH

Claim count:	1,655
Compared to last month:	1.2%
Claimant rate:	2.2%
Highest claiming ward	Hesters Way (5.5%)

GLOUCESTER CITY

Claim count:	2,330
Compared to last month:	0.0%
Claimant rate:	2.9%
Highest claiming wards	Westgate (5.8%)

COTSWOLD DISTRICT

Claim count:	710
Compared to last month:	0.7%
Claimant rate:	1.4%
Highest claiming ward	Watermoor (3.6%)

STROUD DISTRICT

Claim count:	1,060
Compared to last month:	-1.9%
Claimant rate:	1.5%
Highest claiming wards	Slade (4.1%)

FOREST OF DEAN

Claim count:	1,155
Compared to last month:	-0.9%
Claimant rate:	2.3%
Highest claiming ward	Lydney East (4.7%)

TEWKESBURY BOROUGH

Claim count:	980
Compared to last month:	0.5%
Claimant rate:	1.8%
Highest claiming ward	Tewkesbury Prior's Park (3.8%)

PART 2: UK, SW AND GLOUCESTERSHIRE INDICATORS

The unemployment situation in Gloucestershire compared to the South West and the UK.

Claimant Rate

Figure 1: Claimant Rate for Gloucestershire, the South West and UK over the past year

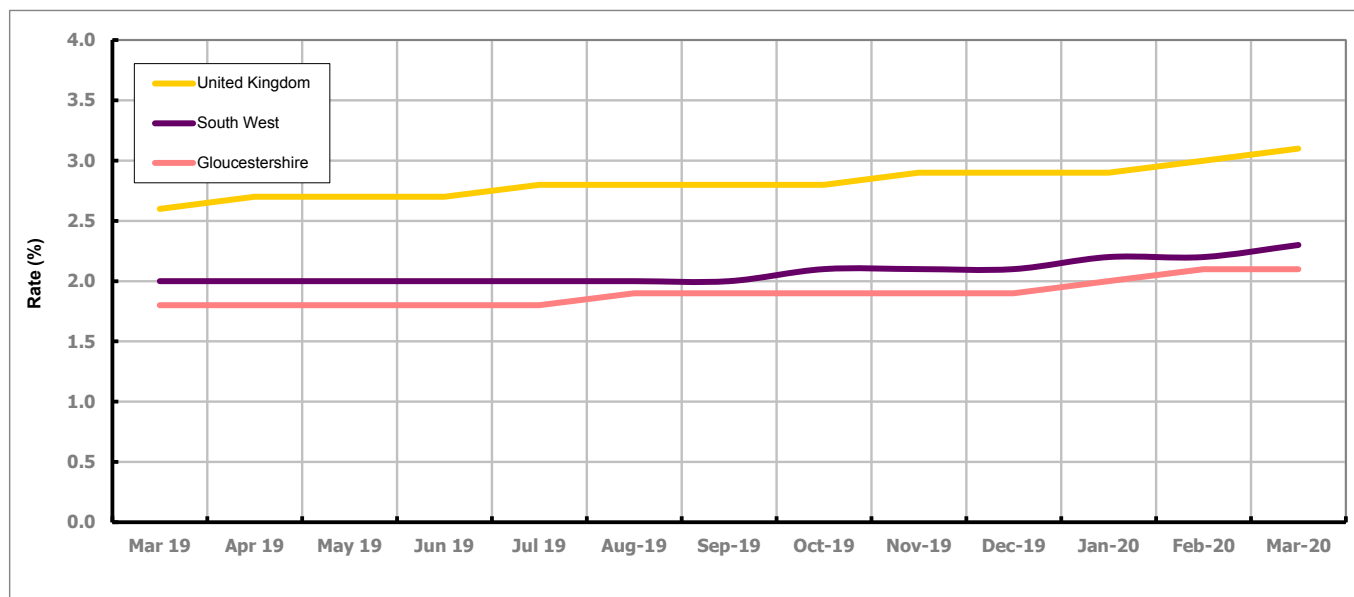


Figure 1 shows the claimant rate for Gloucestershire at 2.1% in March 2020. The Gloucestershire rate has been lower than the South West average since December 2015, with the exception of April and May 2016 when it was the same. It has been persistently lower by approximately 0.9% against the UK average.

Claimant Count

Table 1: Analysis of UK, South West and Gloucestershire Claimant Counts

Area	Claimant Count in March 2020	% change on February 2020	Consecutive months increasing
UK	1,275,575	1.6%	20
South West	76,125	0.7%	5
Gloucestershire	7,890	-0.1%	0

Table 1 shows that in March 2020, the number of claimants in Gloucestershire was 0.1% lower than the number in February 2020.

PART 3: LOCAL AUTHORITY DISTRICT ANALYSIS

Claimant Rate and Claimant Count

Figure 2: Claimant Rate (%) across Gloucestershire - March 2020

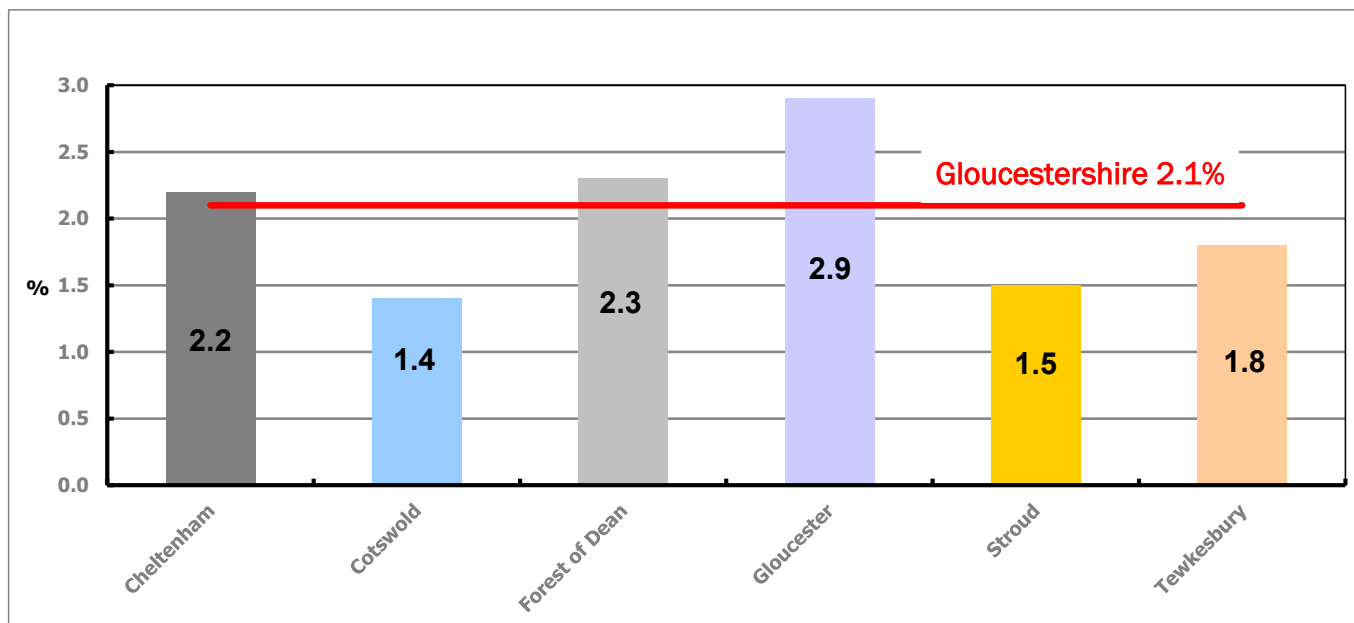


Figure 2 shows the claimant rate for March 2020 in Gloucestershire. Between February 2020 and March 2020 the rates in all districts showed no change.

Table 2: Analysis of Gloucestershire and District Claimant Counts

Total	Mar 20 Number	Mar 20 Rate	Feb 20 Number	Feb 20 Rate	Monthly change	% monthly change	Monthly change of rate
Gloucestershire	7,890	2.1	7,895	2.1	-5	-0.1%	0.0
Cheltenham	1,655	2.2	1,635	2.2	20	1.2%	0.0
Cotswold	710	1.4	705	1.4	5	0.7%	0.0
Forest of Dean	1,155	2.3	1,165	2.3	-10	-0.9%	0.0
Gloucester	2,330	2.9	2,330	2.9	0	0.0%	0.0
Stroud	1,060	1.5	1,080	1.5	-20	-1.9%	0.0
Tewkesbury	980	1.8	975	1.8	5	0.5%	0.0

Table 2 shows the change in the claimant count in March 2020 compared to February 2020. All districts saw an increase in the number of claimants except the Forest of Dean and Stroud which saw a decrease, and Gloucester which saw no change.

Table 3: Analysis of Male Gloucestershire and District Claimant Counts

Male	Mar 20 Number	Mar 20 Rate	Feb 20 Number	Feb 20 Rate	Monthly change	% monthly change	Monthly change of rate
Gloucestershire	4,585	2.4	4,525	2.4	60	1.3%	0.0
Cheltenham	985	2.7	990	2.7	-5	-0.5%	0.0
Cotswold	385	1.5	380	1.5	5	1.3%	0.0
Forest of Dean	655	2.6	645	2.6	10	1.6%	0.0
Gloucester	1,430	3.5	1,395	3.4	35	2.5%	0.1
Stroud	585	1.7	575	1.6	10	1.7%	0.1
Tewkesbury	545	2.0	535	2.0	10	1.9%	0.0

Table 3 shows the change in the male claimant count in March 2020 compared to February 2020. All districts saw an increase in the number of male claimants except Cheltenham which saw a decrease.

Table 4: Analysis of Female Gloucestershire and District Claimant Counts

Female	Mar 20 Number	Mar 20 Rate	Feb 20 Number	Feb 20 Rate	Monthly change	% monthly change	Monthly change of rate
Gloucestershire	3,310	1.7	3,370	1.7	-60	-1.8%	0.0
Cheltenham	670	1.8	645	1.7	25	3.9%	0.1
Cotswold	330	1.2	325	1.2	5	1.5%	0.0
Forest of Dean	500	1.9	520	2.0	-20	-3.8%	-0.1
Gloucester	900	2.2	935	2.3	-35	-3.7%	-0.1
Stroud	475	1.3	505	1.4	-30	-5.9%	-0.1
Tewkesbury	440	1.6	440	1.6	0	0.0%	0.0

Table 4 shows the change in the female claimant count in March 2020 compared to February 2020. All districts saw a decrease in the number of female claimants except Cheltenham and Cotswold which saw an increase, and Tewkesbury which saw no change.

PART 4: LOCAL AUTHORITY DISTRICT AND WARD ANALYSIS

This section covers the six districts and a comparison of their constituent wards.

4.1 Cheltenham Borough

Claimant Rate and Claimant Count

Figure 3: Cheltenham Borough claimant rate over the last year

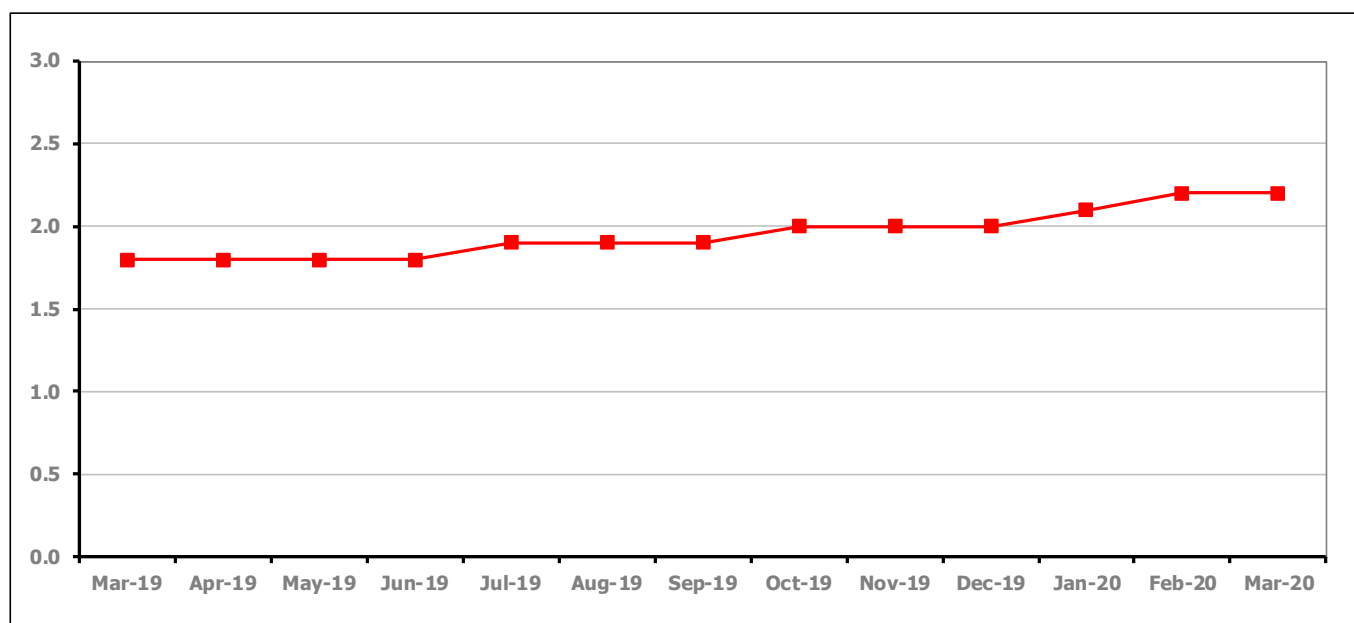


Figure 3 shows the claimant rate in Cheltenham remained at 2.2% in March 2020.

Figure 4: Claimant rates across Cheltenham Borough wards - March 2020

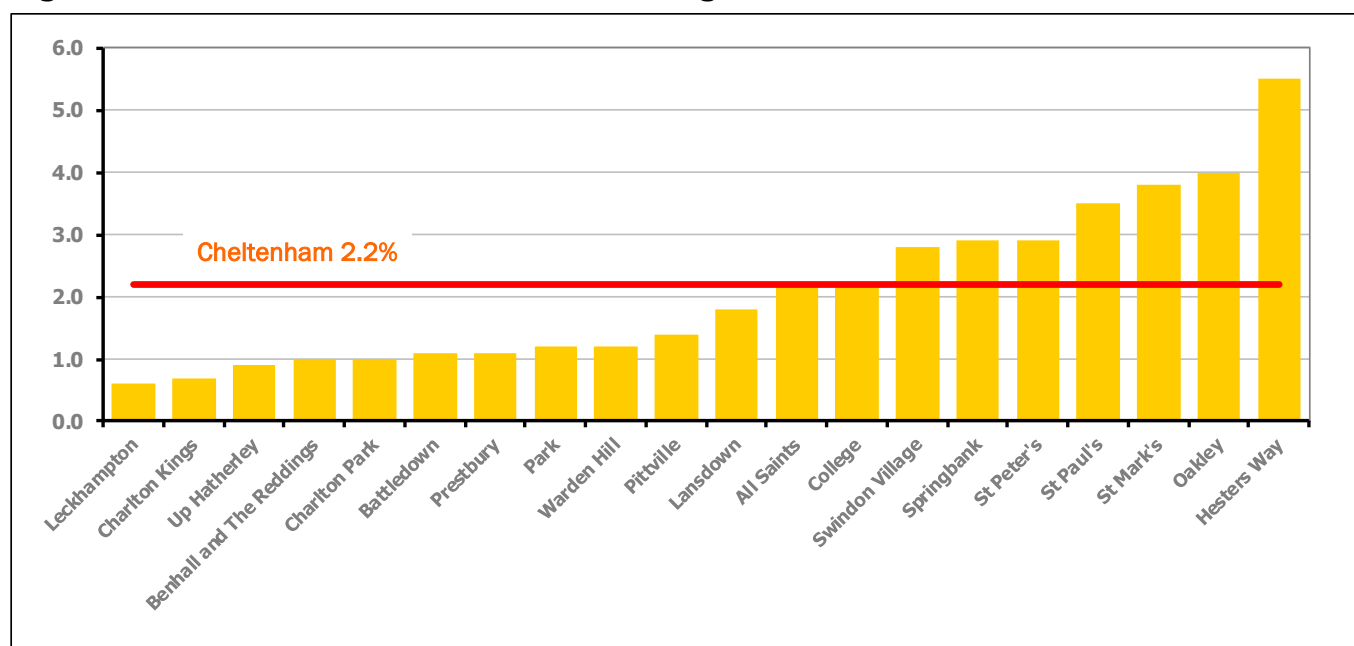


Figure 4 shows the claimant rates for Cheltenham Borough wards. The red line represents the average claimant rate across the Borough of 2.2%. Seven wards lie above the average.

PART 4: LOCAL AUTHORITY DISTRICT AND WARD ANALYSIS

4.1 Cheltenham Borough continued...

Table 5: Analysis of Claimant Count at Cheltenham Borough ward level - March 2020

District	Ward	Rate	Rank*
Cheltenham	Leckhampton	0.6	9
Cheltenham	Charlton Kings	0.7	11
Cheltenham	Up Hatherley	0.9	23
Cheltenham	Benhall and The Reddings	1.0	32
Cheltenham	Charlton Park	1.0	32
Cheltenham	Battledown	1.1	37
Cheltenham	Prestbury	1.1	37
Cheltenham	Park	1.2	46
Cheltenham	Warden Hill	1.2	46
Cheltenham	Pittville	1.4	57
Cheltenham	Lansdown	1.8	86
Cheltenham	All Saints	2.2	108
Cheltenham	College	2.2	108
Cheltenham	Swindon Village	2.8	123
Cheltenham	Springbank	2.9	124
Cheltenham	St Peter's	2.9	124
Cheltenham	St Paul's	3.5	133
Cheltenham	St Mark's	3.8	136
Cheltenham	Oakley	4.0	139
Cheltenham	Hesters Way	5.5	144

	lowest 10% of county
	first quartile of county
	second quartile of county
	third quartile of county
	fourth quartile of county
	highest 10% of county

* 1 = "best" and 146 = "worst"

Table 5 shows overall claimant rates for Cheltenham Borough wards and their position relative to all wards in Gloucestershire.

PART 4: LOCAL AUTHORITY DISTRICT AND WARD ANALYSIS

4.2 Cotswold District

Claimant Rate and Claimant Count

Figure 5: Cotswold District claimant rate over the last year

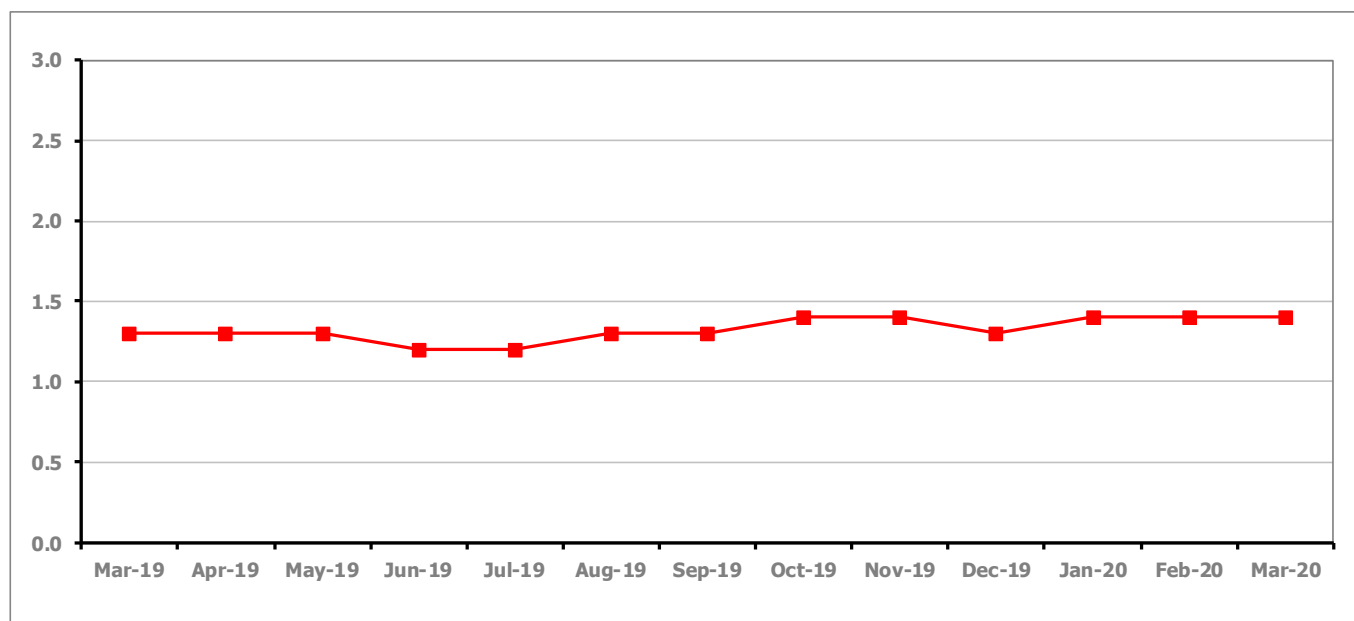


Figure 5 shows the claimant rate in Cotswold District remained at 1.4% in March 2020.

Figure 6: Claimant rates across Cotswold District wards - March 2020

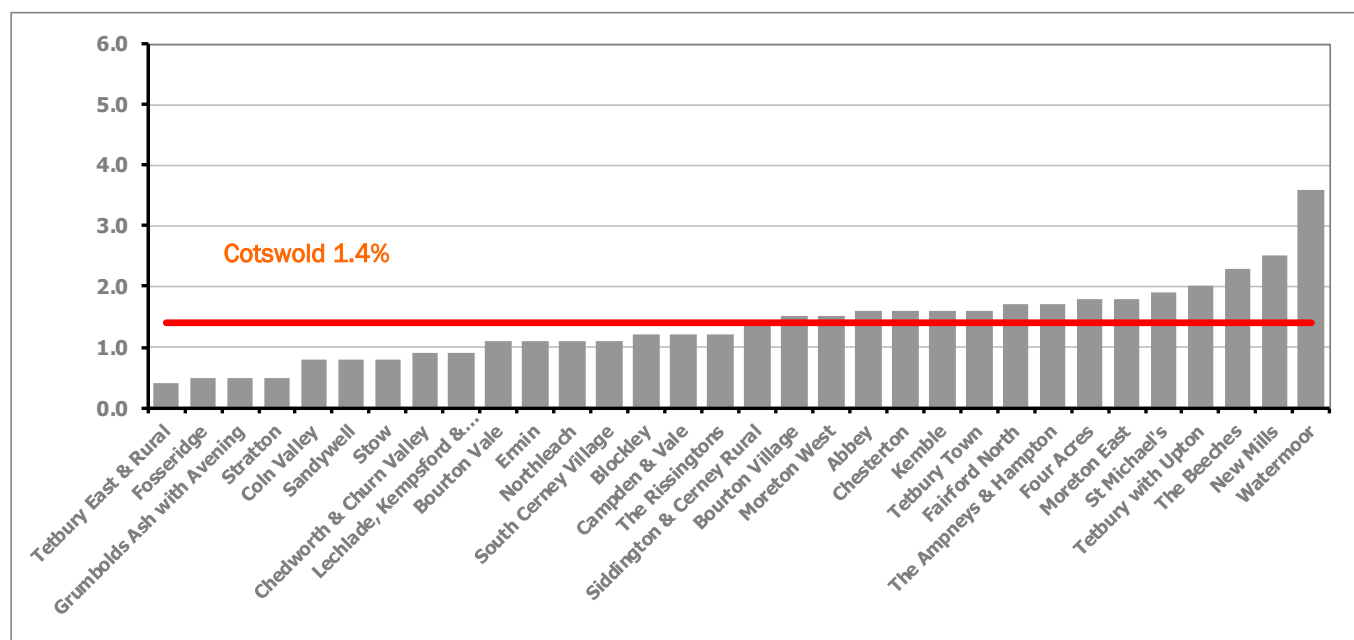


Figure 6 shows the claimant rates for Cotswold District wards. The red line represents the average claimant rate across the District of 1.4%. Fifteen wards lie above the average.

PART 4: LOCAL AUTHORITY DISTRICT AND WARD ANALYSIS

4.2 Cotswold District continued...

Table 6: Analysis of Claimant Count at Cotswold District ward level - March 2020

District	Ward	Rate	Rank*
Cotswolds	Tetbury East & Rural	0.4	1
Cotswolds	Fosseridge	0.5	2
Cotswolds	Grumbolds Ash with Avening	0.5	2
Cotswolds	Stratton	0.5	2
Cotswolds	Coln Valley	0.8	18
Cotswolds	Sandywell	0.8	18
Cotswolds	Stow	0.8	18
Cotswolds	Chedworth & Churn Valley	0.9	23
Cotswolds	Lechlade, Kempsford & Fairford South	0.9	23
Cotswolds	Bourton Vale	1.1	37
Cotswolds	Ermin	1.1	37
Cotswolds	Northleach	1.1	37
Cotswolds	South Cerney Village	1.1	37
Cotswolds	Blockley	1.2	46
Cotswolds	Campden & Vale	1.2	46
Cotswolds	The Rissingtons	1.2	46
Cotswolds	Siddington & Cerney Rural	1.4	57
Cotswolds	Bourton Village	1.5	67
Cotswolds	Moreton West	1.5	67
Cotswolds	Abbey	1.6	76
Cotswolds	Chesterton	1.6	76
Cotswolds	Kemble	1.6	76
Cotswolds	Tetbury Town	1.6	76
Cotswolds	Fairford North	1.7	82
Cotswolds	The Ampneys & Hampton	1.7	82
Cotswolds	Four Acres	1.8	86
Cotswolds	Moreton East	1.8	86
Cotswolds	St Michael's	1.9	93
Cotswolds	Tetbury with Upton	2.0	100
Cotswolds	The Beeches	2.3	114
Cotswolds	New Mills	2.5	119
Cotswolds	Watermoor	3.6	134

	lowest 10% of county
	first quartile of county
	second quartile of county
	third quartile of county
	fourth quartile of county
	highest 10% of county

* 1 = "best" and 146 = "worst"

Table 6 shows overall claimant rates for Cotswold District wards and their position relative to all wards in Gloucestershire.

PART 4: LOCAL AUTHORITY DISTRICT AND WARD ANALYSIS

4.3 Forest of Dean District

Claimant Rate and Claimant Count

Figure 7: Forest of Dean District claimant rate over the last year

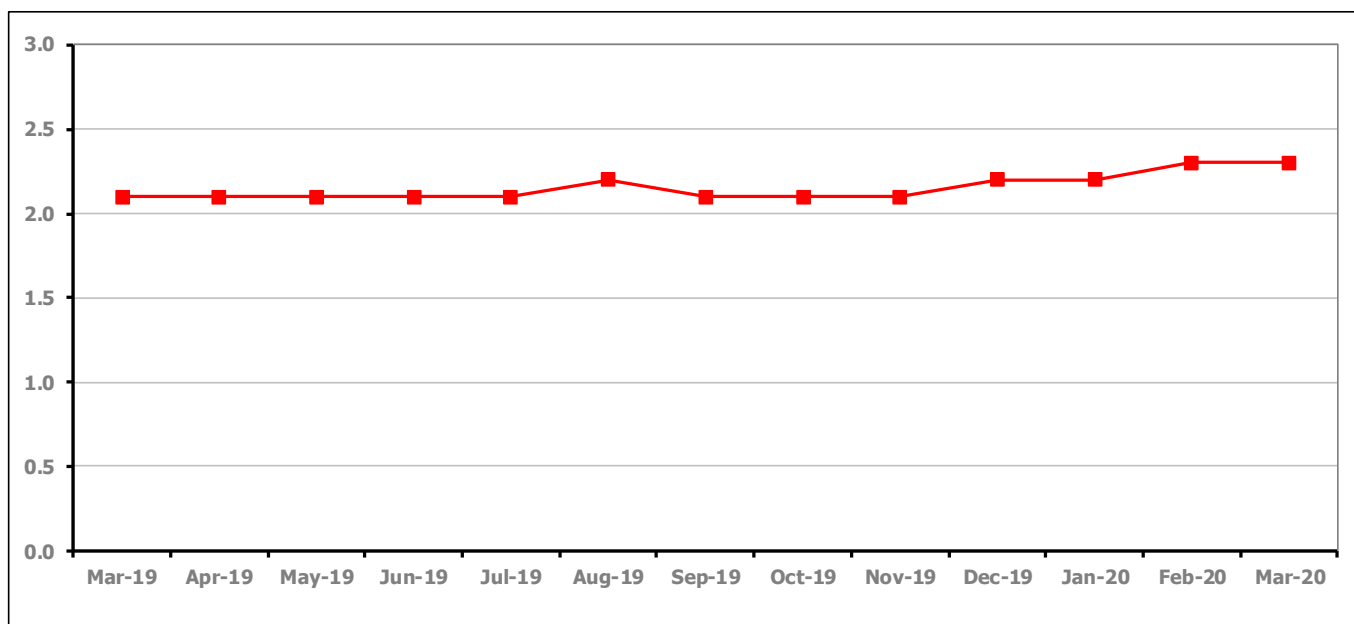


Figure 7 shows the claimant rate in the Forest of Dean remained at 2.3% in March 2020.

Figure 8: Claimant rates across Forest of Dean District wards - March 2020

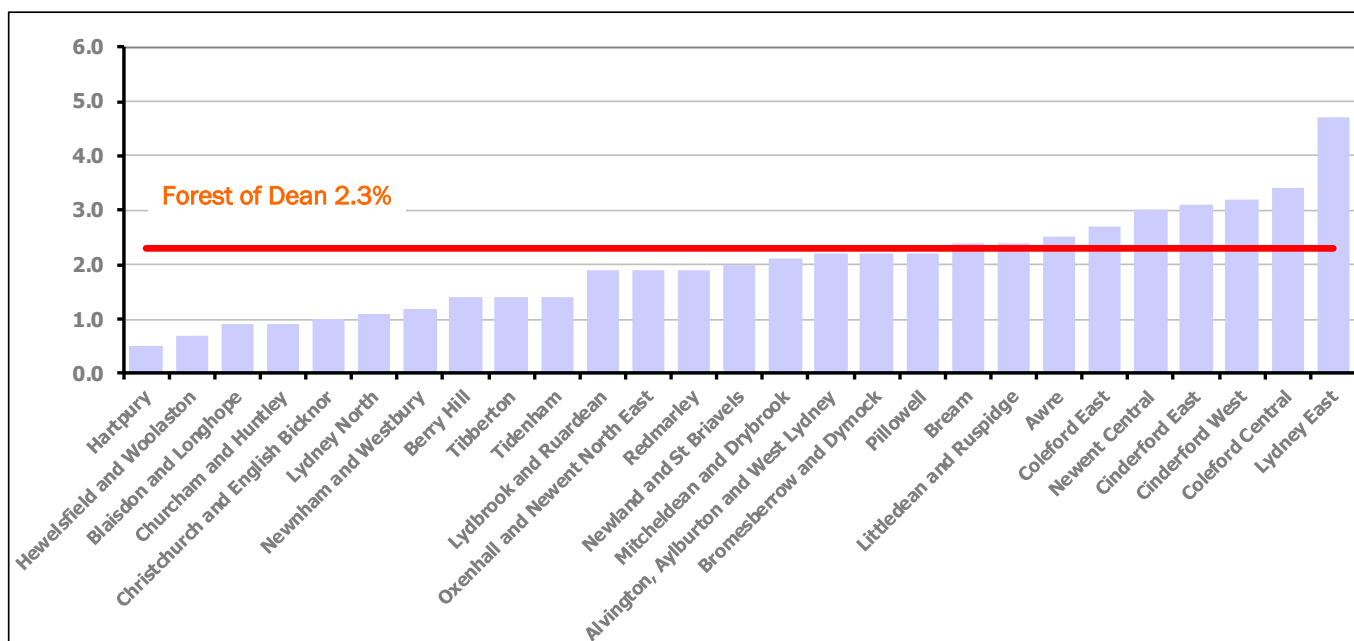


Figure 8 shows the claimant rates for the Forest of Dean District wards. The red line represents the average claimant rate across the District of 2.3%. Nine wards lie above the average.

PART 4: LOCAL AUTHORITY DISTRICT AND WARD ANALYSIS

4.3 Forest of Dean District continued...

Table 7: Analysis of Claimant Count at Forest of Dean District ward level - March 2020

District	Ward	Rate	Rank*
Forest	Hartpury	0.5	2
Forest	Hewelsfield and Woolaston	0.7	11
Forest	Blaisdon and Longhope	0.9	23
Forest	Churcham and Huntley	0.9	23
Forest	Christchurch and English Bicknor	1.0	32
Forest	Lydney North	1.1	37
Forest	Newnham and Westbury	1.2	46
Forest	Berry Hill	1.4	57
Forest	Tibberton	1.4	57
Forest	Tidenham	1.4	57
Forest	Lydbrook and Ruardean	1.9	93
Forest	Oxenhall and Newent North East	1.9	93
Forest	Redmarley	1.9	93
Forest	Newland and St Briavels	2.0	100
Forest	Mitcheldean and Drybrook	2.1	105
Forest	Alvington, Aylburton and West Lydney	2.2	108
Forest	Bromesberrow and Dymock	2.2	108
Forest	Pillowell	2.2	108
Forest	Bream	2.4	117
Forest	Littledean and Ruspidge	2.4	117
Forest	Awre	2.5	119
Forest	Coleford East	2.7	122
Forest	Newent Central	3.0	126
Forest	Cinderford East	3.1	128
Forest	Cinderford West	3.2	129
Forest	Coleford Central	3.4	132
Forest	Lydney East	4.7	142

	lowest 10% of county
	first quartile of county
	second quartile of county
	third quartile of county
	fourth quartile of county
	highest 10% of county

* 1 = "best" and 146 = "worst"

Table 7 shows overall claimant rates for the Forest of Dean District wards and their position relative to all wards in Gloucestershire.

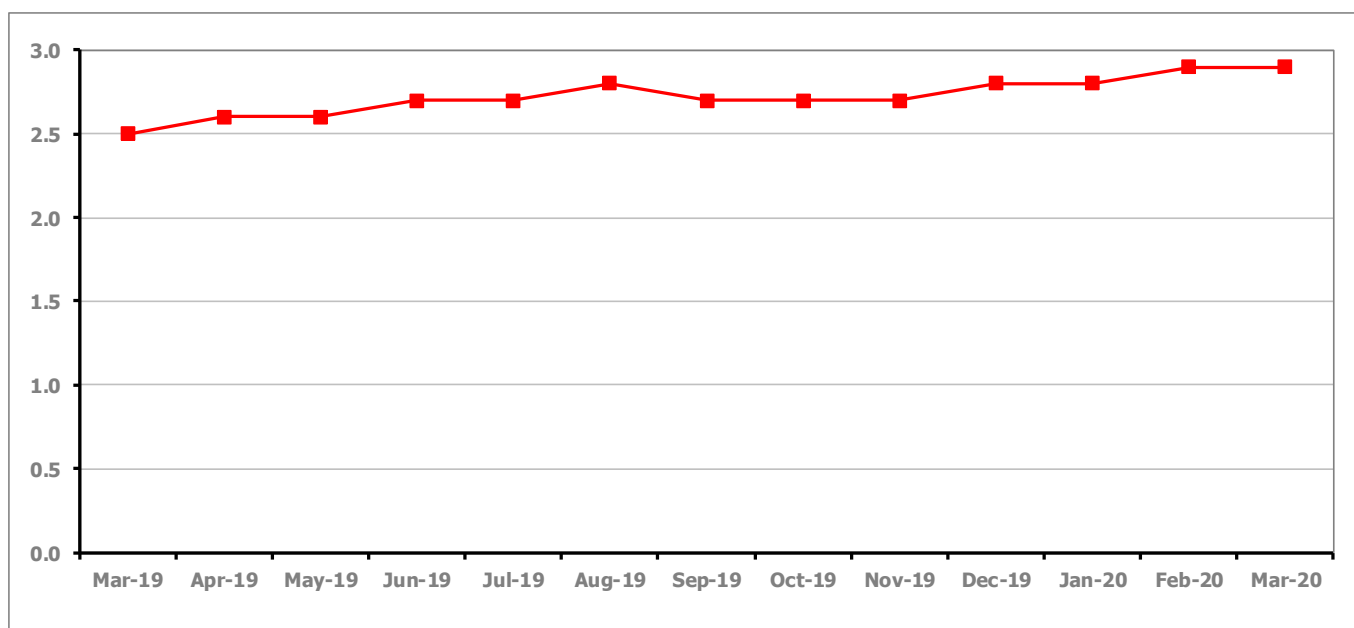
PART 4: LOCAL AUTHORITY DISTRICT AND WARD ANALYSIS**4.4 Gloucester City****Claimant Rate and Claimant Count***Figure 9: Gloucester City claimant rate over the last year*

Figure 9 shows the claimant rate for Gloucester City remained at 2.9% in March 2020.

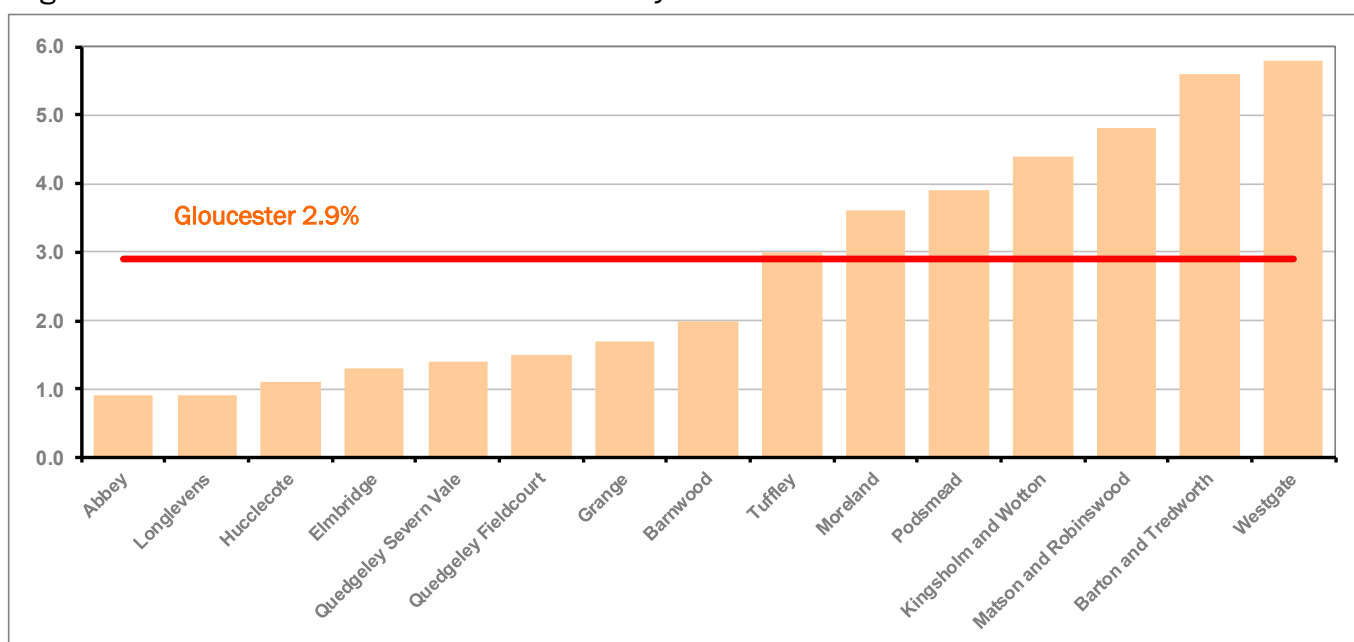
Figure 10: Claimant rates across Gloucester City wards - March 2020






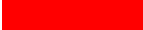
Figure 10 shows the claimant rates for Gloucester City district wards. The red line represents the average claimant rate across the City of 2.9%. Seven wards lie above the average.

PART 4: LOCAL AUTHORITY DISTRICT AND WARD ANALYSIS

4.4 Gloucester City continued...

Table 8: Analysis of Claimant Count at Gloucester City ward level - March 2020

District	Ward	Rate	Rank*
Gloucester	Abbey	0.9	23
Gloucester	Longlevens	0.9	23
Gloucester	Hucclecote	1.1	37
Gloucester	Elmbridge	1.3	54
Gloucester	Quedgeley Severn Vale	1.4	57
Gloucester	Quedgeley Fieldcourt	1.5	67
Gloucester	Grange	1.7	82
Gloucester	Barnwood	2.0	100
Gloucester	Tuffley	3.0	126
Gloucester	Moreland	3.6	134
Gloucester	Podsmead	3.9	138
Gloucester	Kingsholm and Wotton	4.4	141
Gloucester	Matson and Robinswood	4.8	143
Gloucester	Barton and Tredworth	5.6	145
Gloucester	Westgate	5.8	146

	lowest 10% of county
	first quartile of county
	second quartile of county
	third quartile of county
	fourth quartile of county
	highest 10% of county

* 1 = "best" and 146 = "worst"

Table 8 shows overall claimant rates for Gloucester City wards and their position relative to all wards in Gloucestershire.

PART 4: LOCAL AUTHORITY DISTRICT AND WARD ANALYSIS

4.5 Stroud District

Claimant Rate and Claimant Count

Figure 11: Stroud District claimant rate over the last year

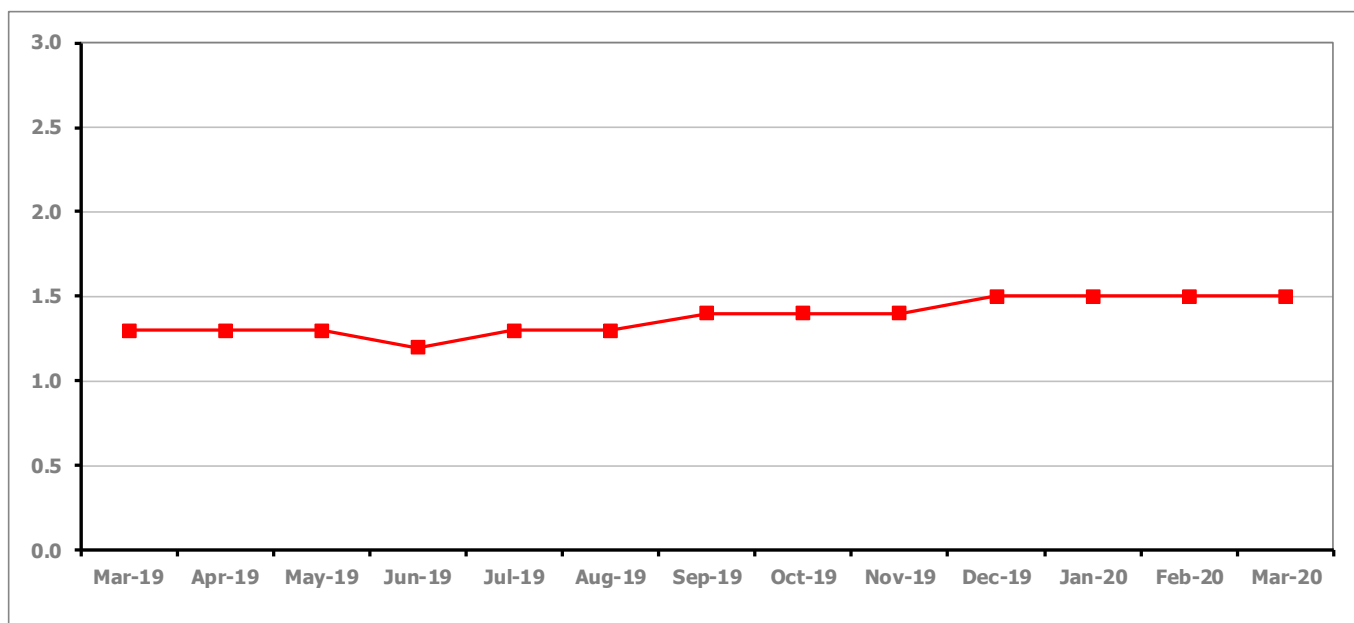


Figure 11 shows the claimant rate for Stroud remained at 1.5% in March 2020.

Figure 12: Claimant rates across Stroud District wards - March 2020

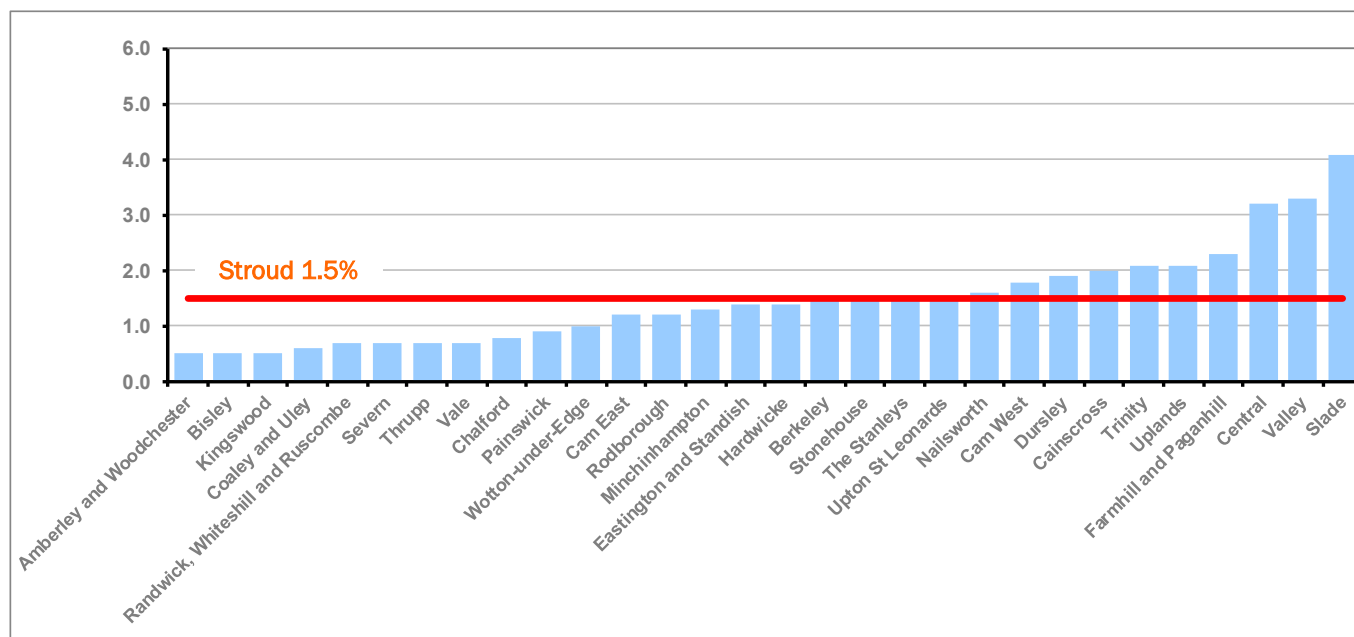


Figure 12 shows the claimant rates in Stroud District wards. The red line represents the average claimant rate across the District of 1.5%. Ten wards are above the average.

PART 4: LOCAL AUTHORITY AND DISTRICT ANALYSIS

4.5 Stroud District continued...

Table 9: Analysis of Claimant Count at Stroud District ward level - March 2020

District	Ward	Rate	Rank*
Stroud	Amberley and Woodchester	0.5	2
Stroud	Bisley	0.5	2
Stroud	Kingswood	0.5	2
Stroud	Coaley and Uley	0.6	9
Stroud	Randwick, Whiteshill and Ruscombe	0.7	11
Stroud	Severn	0.7	11
Stroud	Thrupp	0.7	11
Stroud	Vale	0.7	11
Stroud	Chalford	0.8	18
Stroud	Painswick	0.9	23
Stroud	Wotton-under-Edge	1.0	32
Stroud	Cam East	1.2	46
Stroud	Rodborough	1.2	46
Stroud	Minchinhampton	1.3	54
Stroud	Eastington and Standish	1.4	57
Stroud	Hardwicke	1.4	57
Stroud	Berkeley	1.5	67
Stroud	Stonehouse	1.5	67
Stroud	The Stanleys	1.5	67
Stroud	Upton St Leonards	1.5	67
Stroud	Nailsworth	1.6	76
Stroud	Cam West	1.8	86
Stroud	Dursley	1.9	93
Stroud	Cainscross	2.0	100
Stroud	Trinity	2.1	105
Stroud	Uplands	2.1	105
Stroud	Farmhill and Paganhill	2.3	114
Stroud	Central	3.2	129
Stroud	Valley	3.3	131
Stroud	Slade	4.1	140

	lowest 10% of county
	first quartile of county
	second quartile of county
	third quartile of county
	fourth quartile of county
	highest 10% of county

* 1 = "best" and 146 = "worst"

Table 9 shows overall claimant rates for Stroud District wards and their position relative to all wards in Gloucestershire.

PART 4: LOCAL AUTHORITY DISTRICT AND WARD ANALYSIS

4.6 Tewkesbury Borough

Claimant Rate and Claimant Count

Figure 13: Tewkesbury Borough claimant rate over the last year

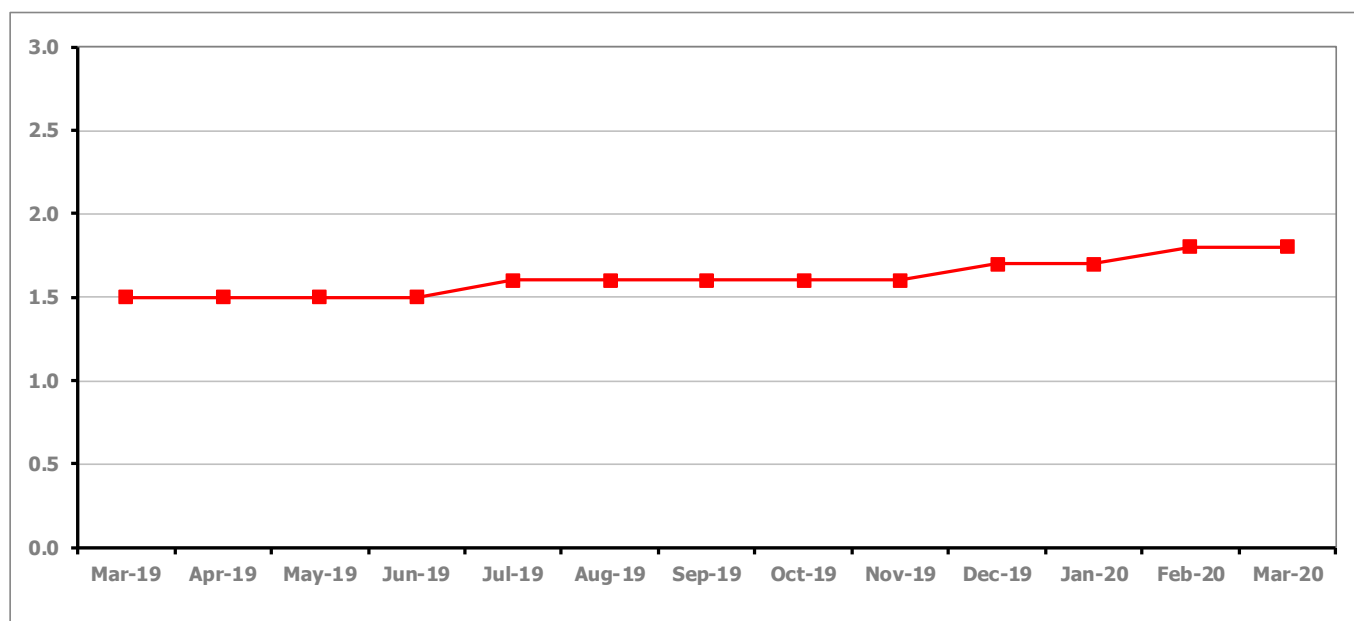


Figure 13 shows the claimant rate for Tewkesbury Borough remained at 1.8% in March 2020.

Figure 14: Claimant rates across Tewkesbury Borough wards - March 2020

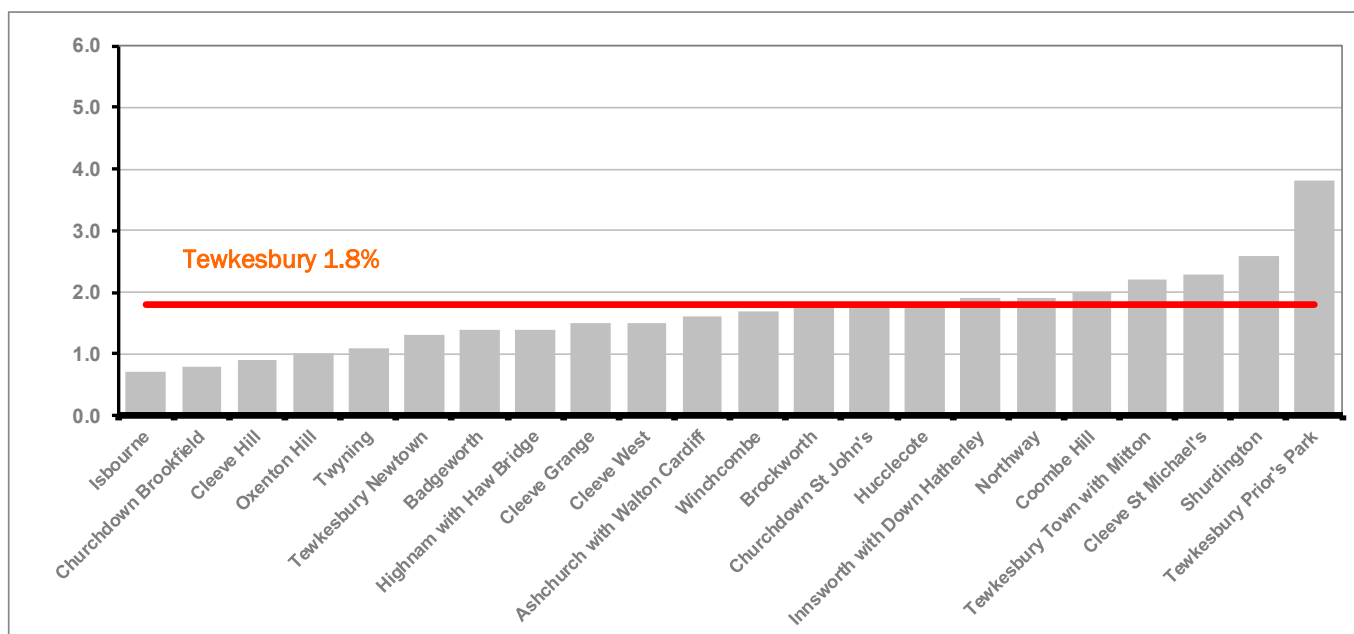


Figure 14 shows the claimant rates in Tewkesbury Borough wards. The red line represents the average claimant rate across the District of 1.8%. Seven wards are above the average.

PART 4: LOCAL AUTHORITY AND DISTRICT ANALYSIS

4.6 Tewkesbury Borough continued...

Table 10: Analysis of Claimant Count at Tewkesbury Borough level - March 2020

District	Ward	Rate	Rank*
Tewkesbury	Isbourne	0.7	11
Tewkesbury	Churchdown Brookfield	0.8	18
Tewkesbury	Cleeve Hill	0.9	23
Tewkesbury	Oxenton Hill	1.0	32
Tewkesbury	Twynning	1.1	37
Tewkesbury	Tewkesbury Newtown	1.3	54
Tewkesbury	Badgeworth	1.4	57
Tewkesbury	Highnam with Haw Bridge	1.4	57
Tewkesbury	Cleeve Grange	1.5	67
Tewkesbury	Cleeve West	1.5	67
Tewkesbury	Ashchurch with Walton Cardiff	1.6	76
Tewkesbury	Winchcombe	1.7	82
Tewkesbury	Brockworth	1.8	86
Tewkesbury	Churchdown St John's	1.8	86
Tewkesbury	Hucclecote	1.8	86
Tewkesbury	Innsworth with Down Hatherley	1.9	93
Tewkesbury	Northway	1.9	93
Tewkesbury	Coombe Hill	2.0	100
Tewkesbury	Tewkesbury Town with Mitton	2.2	108
Tewkesbury	Cleeve St Michael's	2.3	114
Tewkesbury	Shurdington	2.6	121
Tewkesbury	Tewkesbury Prior's Park	3.8	136

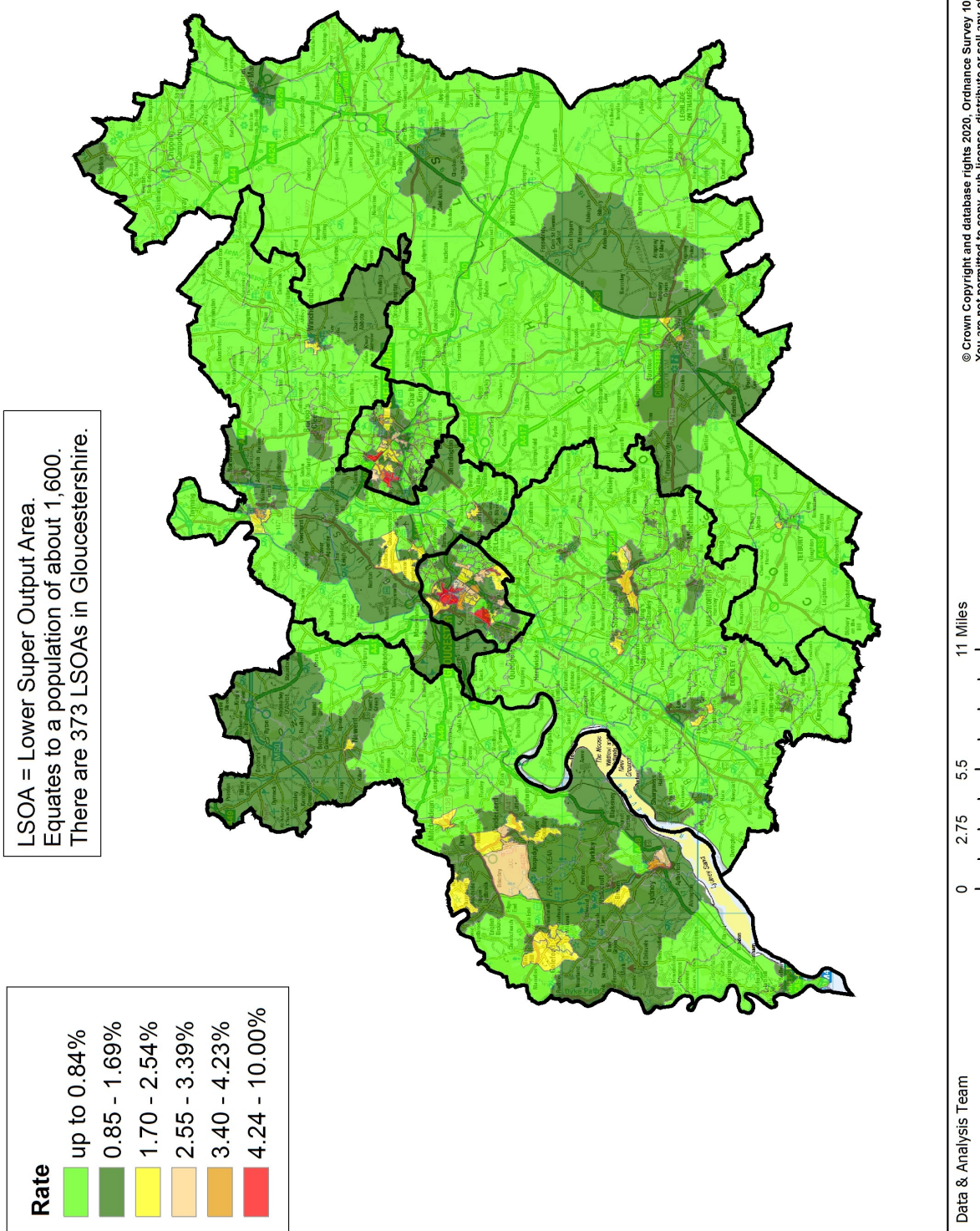
	lowest 10% of county
	first quartile of county
	second quartile of county
	third quartile of county
	fourth quartile of county
	highest 10% of county

* 1 = "best" and 146 = "worst"

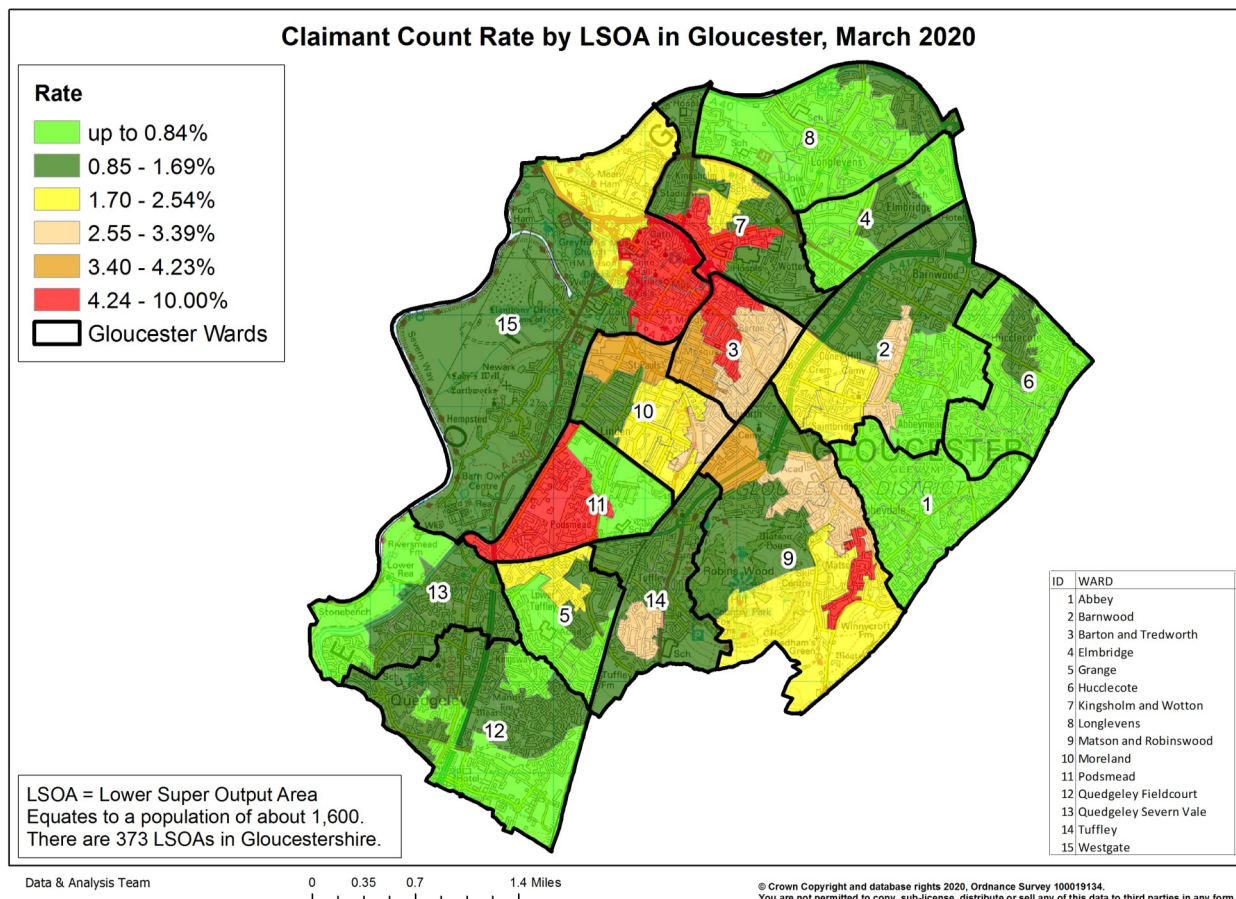
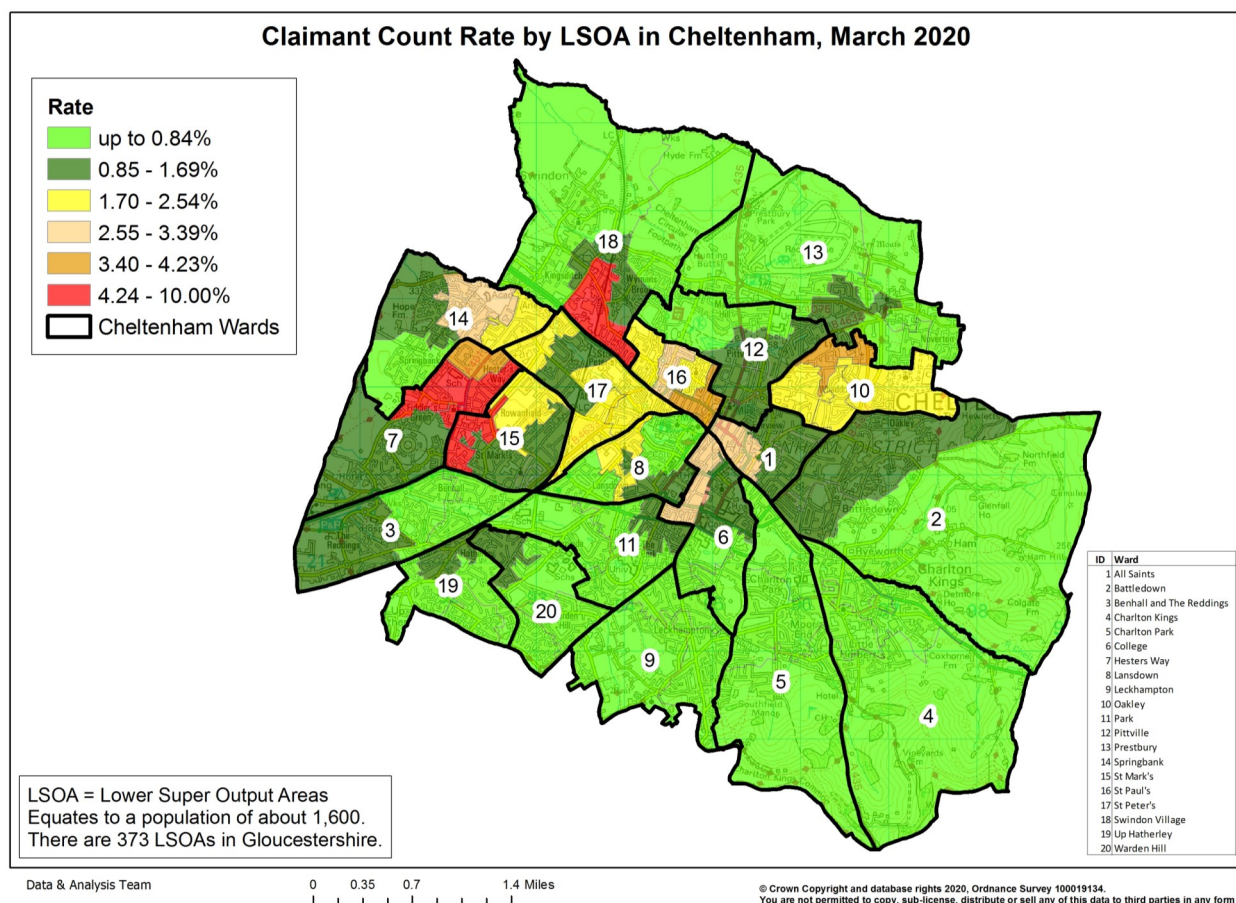
Table 10 shows overall claimant rates for Tewkesbury Borough wards and their position relative to all wards in Gloucestershire.

PART 5: MAP SHOWING DISTRIBUTION OF CLAIMANT RATE ACROSS GLOUCESTERSHIRE

Claimant Count Rate by LSOA in Gloucestershire, March 2020



PART 5: MAP SHOWING DISTRIBUTION OF CLAIMANT RATE ACROSS GLOUCESTERSHIRE



PART 6: YOUTH UNEMPLOYMENT(18-24 year olds)

Youth Claimant Rate and Claimant Count

Figure 15: Claimant Count for Gloucestershire over the past year

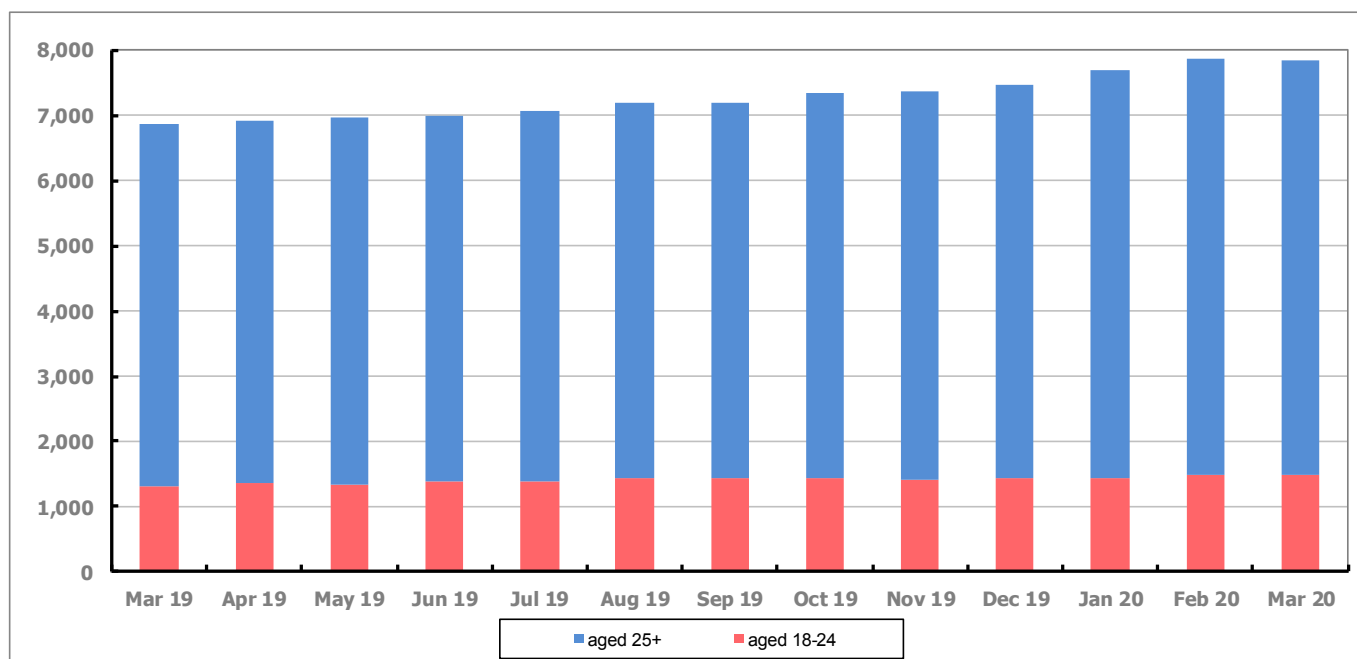


Figure 15 shows that in March 2020, 1,480 people aged 18-24 were claiming Job Seekers Allowance and Universal Credit who were not in work in Gloucestershire, this represents 18.8% of total working age claimants.

PART 7: YOUNG PEOPLE NOT IN EDUCATION, EMPLOYMENT OR TRAINING (NEET) IN GLOUCESTERSHIRE

Data provided by Gloucestershire Youth Support Team on the situation of young people (16-18) in Gloucestershire who are not in education, employment or formal training.

Gloucestershire Youth Support Team is required to report performance with the 16-18 age range against nationally defined criteria for counting the NEET group. The NEET group includes young people actively seeking education, employment or training as well as those young people who are either not yet ready or who are unable to access these opportunities because of their personal circumstances. The figures quoted below include young people in both of these categories.

Summary

At the end of March 2020 there were 353 young people aged 16-18 not in education, employment or training in Gloucestershire and this figure translates into an adjusted (*) 16-18 NEET population of 2.42%. The total number of NEET young people decreased by 15 in March 2020 compared to February 2020, five districts saw a decrease in their figures and one district stayed the same.

Total NEET Group by District Area

March 2020 NEET data

	Cheltenham	Cotswold	Forest	Gloucester	Stroud	Tewkesbury	Total
Total NEET	66	30	50	111	47	49	353
Cohort	2666	2086	1991	3562	3109	2196	15610
% NEET	2.48	1.44	2.51	3.12	1.51	2.23	2.42*

If you would like to receive any further information on Gloucestershire's NEET strategy then please contact Lynne.Speak@Prospects.co.uk or telephone 07900 391182.

(*) Adjustment includes a proportion of young people aged 16-18 whose outcomes are not known to Gloucestershire Youth Support Team.