

Number of residents living in communal establishments at Middle Super Output Area Level, 2021

This map uses the 2021 MSOA boundaries

Key

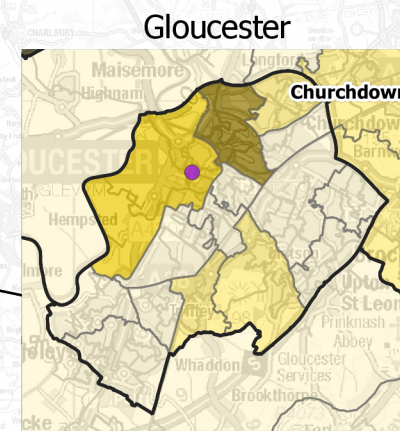
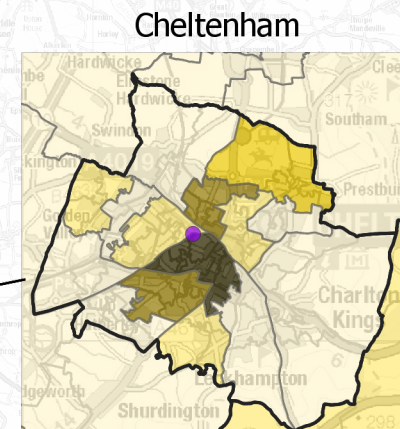
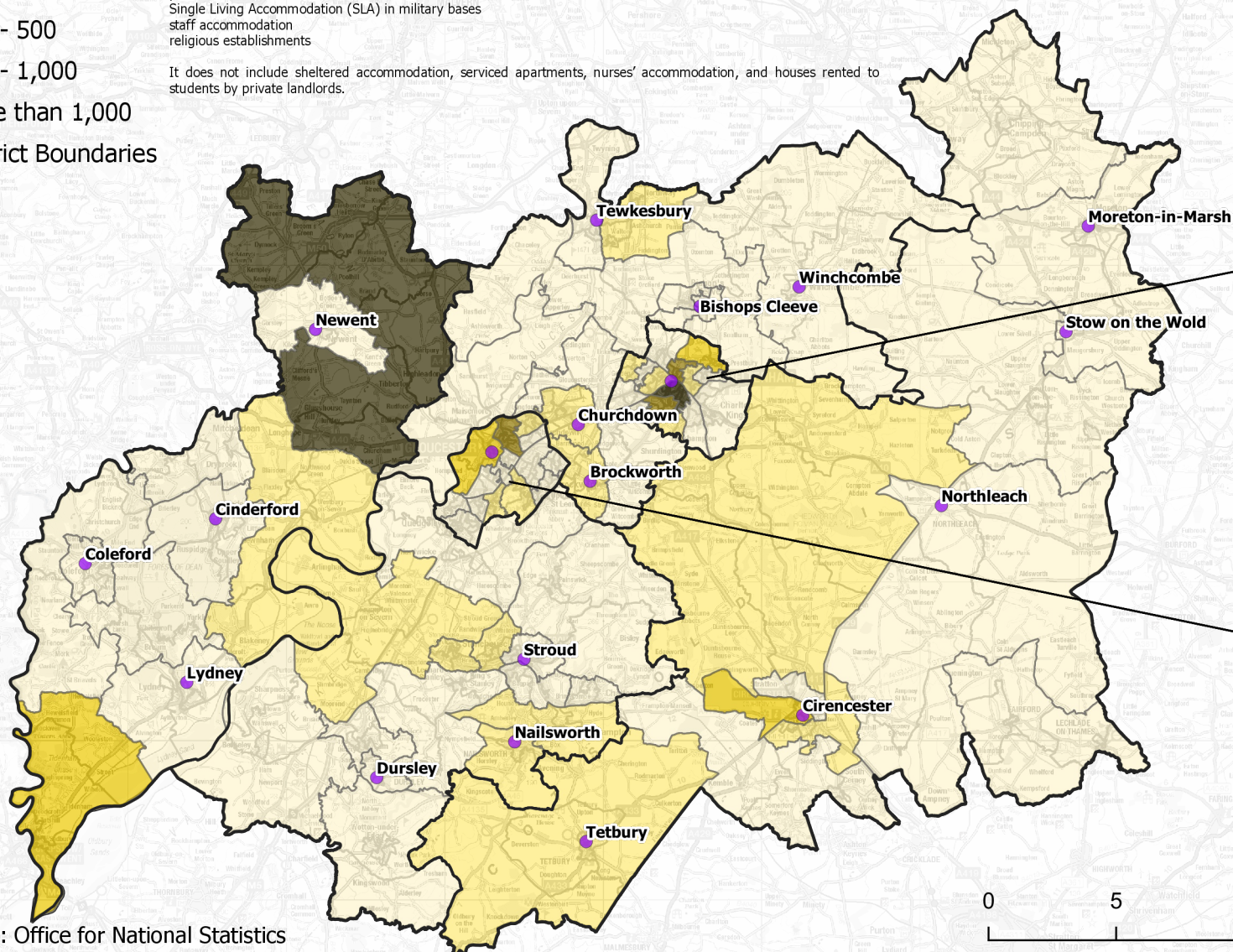
Number of residents

- 100 or less
- 101 - 250
- 251 - 500
- 501 - 1,000
- More than 1,000
- District Boundaries

A managed communal establishment is a place that provides managed full-time or part-time supervision of residential accommodation.

Examples include:
 university halls of residence and boarding schools
 care homes, hospitals, hospices and maternity units
 hotels, guest houses, hostels and bed and breakfasts, all with residential accommodation for seven or more guests
 prisons and other secure facilities
 Single Living Accommodation (SLA) in military bases
 staff accommodation
 religious establishments

It does not include sheltered accommodation, serviced apartments, nurses' accommodation, and houses rented to students by private landlords.



Data source: Office for National Statistics