

PITCHCOMBE, A4173 JUNCTION IMPROVEMENTS NEWSLETTER



PROGRESS PHOTOS



New kerbing has been installed on site



New footpaths to Gloucester have been installed



Protection works to the live underground services



New brick built chambers have been completed



Retaining wall blockwork has been installed



Construction of footpaths towards Painswick



Kerbing and temporary access installed on the A46



Completed footpath along the A46



New kerbline completed on footpath alongside the A4173



Gloucestershire
COUNTY COUNCIL



HM Government



**Department
for Transport**

PITCHCOMBE, A4173 JUNCTION IMPROVEMENTS NEWSLETTER



PROGRESS TO DATE

There has been increased productivity on site since the Christmas break:

- Three way traffic light system has been reinstalled on site
- Permanent gas protection works have been completed to MP gas main
- New road construction is underway at Half Way Pitch
- New footpath installed along A46 to Painswick
- Over 200m of new kerbs have been installed throughout site

LOOK AHEAD PROGRAMME

In the coming weeks we will complete the precast concrete retaining wall, associated earthworks and drainage.

Streetlighting ducts are to be completed and the new poles installed.

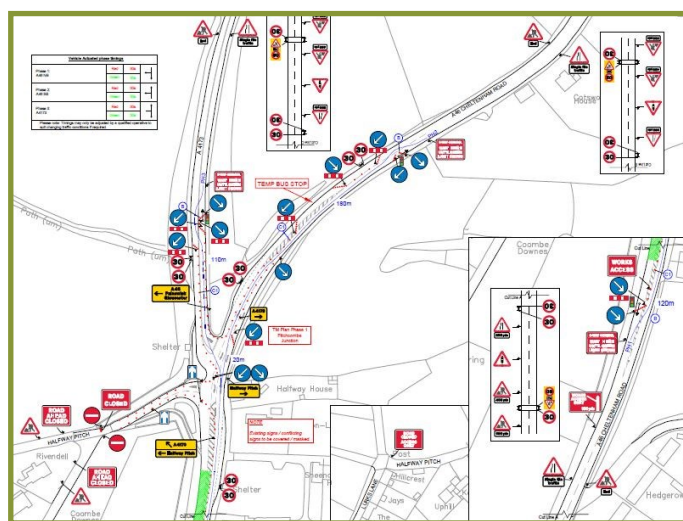
Ongoing installation of kerbs, footpaths, and new bus stop including shelter installation.

We have a planned road closure on **Tuesday 04/02/20*** for essential service installations **pending GCC approval*



TRAFFIC MANAGEMENT

On Monday 27/01/20 we will alter the traffic management system to allow works to progress in along the North bound verges of the A46 and A4173.



The working area will remain under three way traffic light control. The main difference you will notice is a change to the route for the one way system up halfway pitch and the relocation of the north bound bus stop on the A46.

The alterations will be carried out outside of peak times to try and prevent traffic delays but due to the nature of the work some disruption may be unavoidable. This is essential work and is required for the safety of all road users, the public and our workforce. We appreciate your patience and apologise for any disruption caused.