

# Unemployment Bulletin

Issue 194 September 2024

## Contents

<b>Part 1: Summary</b> A summary of unemployment data at district, County, regional and national level	1
<b>Part 2: County</b> Unemployment figures for the County compared to the South West and the rest of the UK	3
<b>Part 3: Districts</b> A comparative break down of unemployment figures by district	4
<b>Part 4: Wards</b> Further breakdown of unemployment figures by ward:	
Cheltenham	6
Cotswolds	8
Forest of Dean	10
Gloucester	12
Stroud	14
Tewkesbury	16
<b>Part 5: Map</b> Distribution of claimant rate across Gloucestershire	18
<b>Part 6: Youth Unemployment</b> Unemployment data for the 18-24 year old age group	20
<b>Part 7: Young People</b> Data about Young People Not in Education, Employment or Training (NEET)	21

The Claimant Count is a measure of the number of people who are unemployed and claiming benefits. From 1996 until the recent introduction of Universal Credit, this was based on the number of people claiming Jobseeker's Allowance. However, since its introduction some unemployment benefit claimants will be claiming Universal Credit instead. **To reflect this change, the Claimant Count has been expanded to include people claiming Jobseeker's Allowance plus those who claim Universal Credit and who are searching for work.**

Since 2016 Gloucestershire has been transitioning to full Universal Credit with the process due to be completed in 2025. This means a broader span of claimants will be required to look for work than under Jobseekers Allowance. As more people are brought within the coverage of Universal Credit, the Claimant Count is set to rise. In addition, in May 2024 the DWP rolled out an increase in the administrative earnings threshold (AET) for full work search conditionality. This means a cohort of claimants who are in work but on an income below the AET will now be required to search for work. This change is likely to affect around 180,000 claimants across the country over around 6 months, increasing the Claimant Count over that time. More information about Universal Credit please see the [ONS website](#).

## INTRODUCTION

The Unemployment Bulletin provides a monthly update on unemployment data for Gloucestershire, the South West region and the United Kingdom. It is produced by the Data, Analysis & Insights Team in the County Council's Planning, Performance and Insight function. The data are sourced from the Office for National Statistics via Nomis ([www.nomis.co.uk](http://www.nomis.co.uk)). All data are rounded to the nearest 5 and may not precisely add to the sum of the number of people claiming JSA, and the number of people claiming Universal Credit required to seek work, due to independent rounding.

## PART 1: SUMMARY

The claimant rate in Gloucestershire remained at 2.8% in September 2024. The South West rate remained at 2.9% whilst the UK rate increased to 4.3%. Gloucestershire's rate was 0.1% lower than the South West average of 2.9%, and 1.5% lower than the UK average of 4.3%.

The claimant count in Gloucestershire in September 2024 increased by 80 people. The amount of people claiming in September was 0.7% higher than the number in August. This compares to a 0.2% increase in the South West and a 1.2% increase in the UK.

Produced by:

**Data, Analysis & Insights Team**  
Planning, Performance and Insight  
Gloucestershire County Council  
October 2024

## DISTRICTS AT A GLANCE

At a glance unemployment information grouped by district. Includes:

**Claimant count:** Total number of people claiming Job Seekers Allowance and Universal Credit who are not in work in September 2024

**Claimant count change on previous month:** How much larger/smaller September's claimant count is compared to August expressed as a %

**Claimant rate:** The % of working age population claiming Job Seekers Allowance and Universal Credit who are not in work in September 2024

**Highest claiming ward:** The ward with the highest claim count in that district and the rate

### CHELTENHAM BOROUGH

Claimant count:	2,210
Claimant count change on previous month:	0.2%
Claimant rate:	2.9%
Highest claiming ward(s)	Oakley (6.4%)

### GLOUCESTER CITY

Claimant count:	3,300
Claimant count change on previous month:	2.3%
Claimant rate:	3.9%
Highest claiming ward(s)	Westgate (7.9%)

### COTSWOLD DISTRICT

Claimant count:	1,005
Claimant count change on previous month:	-2.9%
Claimant rate:	1.9%
Highest claiming ward(s)	Watermoor (4.6%)

### STROUD DISTRICT

Claimant count:	1,480
Claimant count change on previous month:	0.7%
Claimant rate:	2.0%
Highest claiming ward(s)	Stroud Slade (4.1%)

### FOREST OF DEAN

Claimant count:	1,620
Claimant count change on previous month:	0.6%
Claimant rate:	3.2%
Highest claiming ward(s)	Tidenham (7.2%)

### TEWKESBURY BOROUGH

Claimant count:	1,405
Claimant count change on previous month:	0.7%
Claimant rate:	2.5%
Highest claiming ward(s)	Tewkesbury South (4.2%)

## PART 2: UK, SW AND GLOUCESTERSHIRE INDICATORS

The unemployment situation in Gloucestershire compared to the South West and the UK.

### Claimant Rate

Figure 1: Claimant Rate for Gloucestershire, the South West and UK over the past year

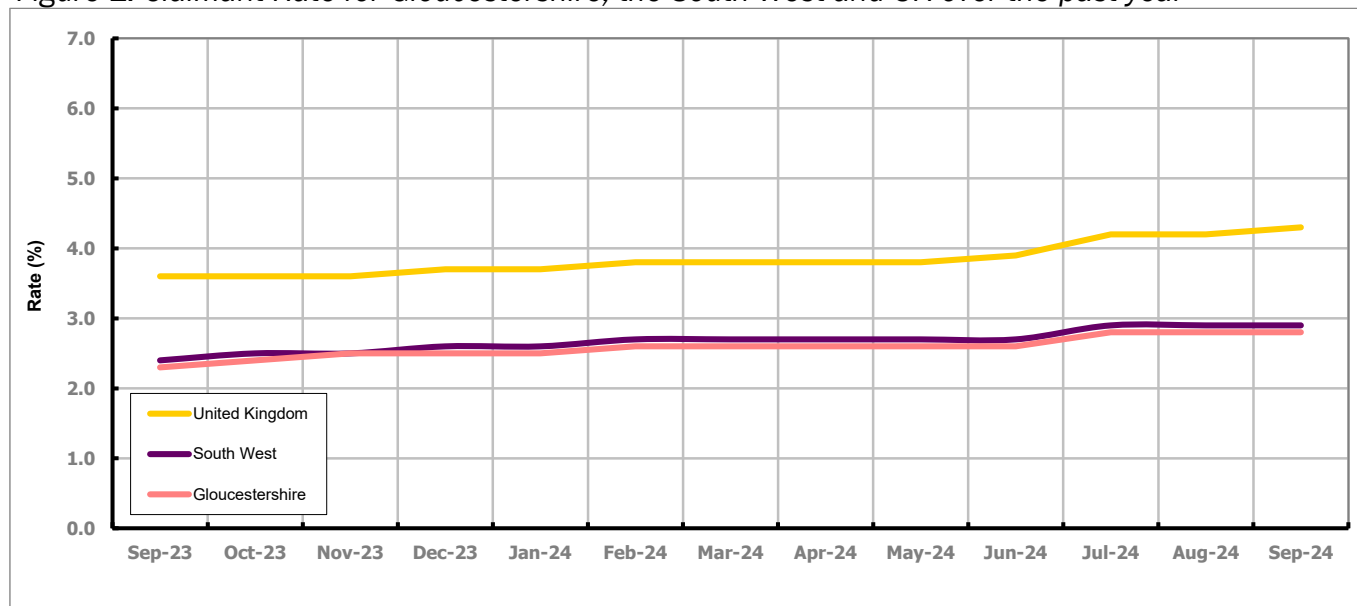


Figure 1 shows the claimant rate for Gloucestershire at 2.8% in September 2024. The Gloucestershire rate has been lower than the South West average since November 2015, with the exception of April and May 2016 and, more recently, November 2023 when it was the same. On average, it has been approximately 1.3% lower than the UK average since the same month of the previous year.

### Claimant Count

Table 1: Analysis of UK, South West and Gloucestershire Claimant Counts

Area	Claimant Count in September 2024	% change on August 2024	Consecutive months increasing
UK	1,793,460	1.2%	0
South West	100,040	0.2%	0
Gloucestershire	11,020	0.7%	0

Table 1 shows that in September 2024, the number of claimants in Gloucestershire was 0.7% higher than the number in August 2024.

## PART 3: LOCAL AUTHORITY DISTRICT ANALYSIS

### Claimant Rate and Claimant Count

Figure 2: Claimant Rate (%) across Gloucestershire - September 2024

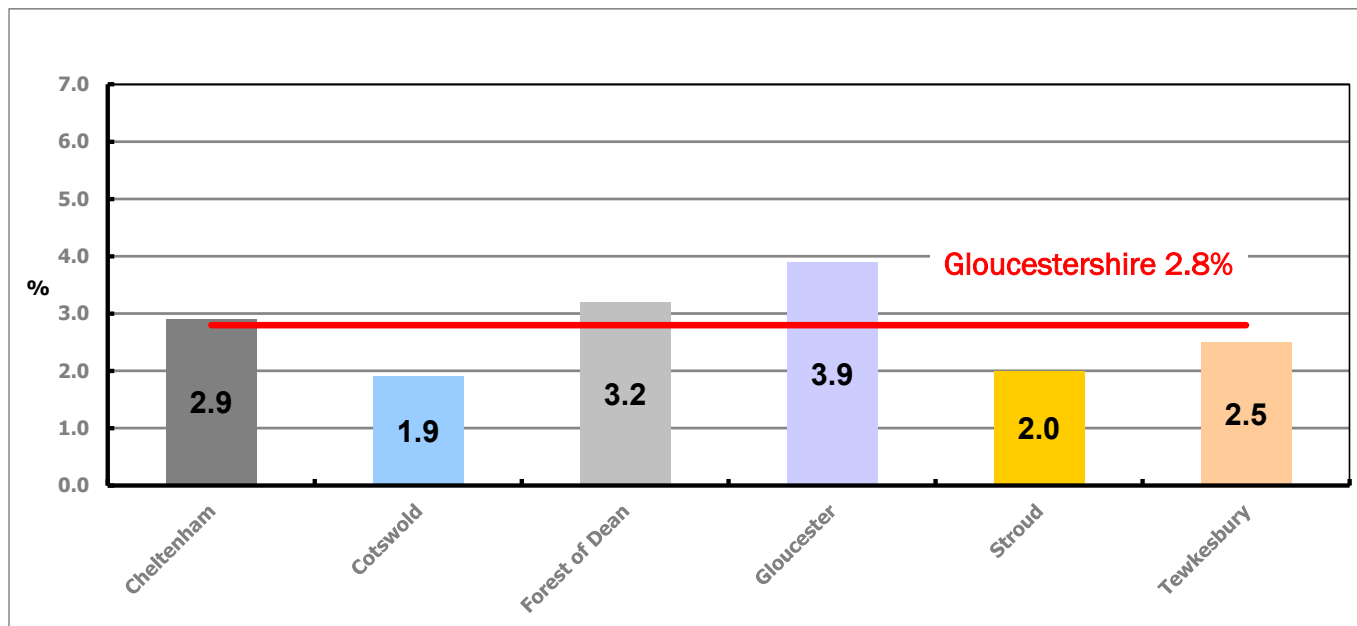


Figure 2 shows the claimant rate for September 2024 in Gloucestershire. Between August and September 2024 the rate decreased in Cotswold, but increased in Forest of Dean and Gloucester. The rate in all other districts remained the same.

Table 2: Analysis of Gloucestershire and District Claimant Counts

Total	Sep 24 Number	Sep 24 Rate	Aug 24 Number	Aug 24 Rate	Monthly change	% monthly change	Monthly change of rate
<b>Gloucestershire</b>	11,020	2.8	10,940	2.8	80	0.7%	0.0
Cheltenham	2,210	2.9	2,205	2.9	5	0.2%	0.0
Cotswold	1,005	1.9	1,035	2.0	-30	-2.9%	-0.1
Forest of Dean	1,620	3.2	1,610	3.1	10	0.6%	0.1
Gloucester	3,300	3.9	3,225	3.8	75	2.3%	0.1
Stroud	1,480	2.0	1,470	2.0	10	0.7%	0.0
Tewkesbury	1,405	2.5	1,395	2.5	10	0.7%	0.0

Table 2 shows the change in the claimant count in September compared to August 2024. Cotswold saw a decrease in the number of claimants, whilst all other districts saw an increase.

Table 3: Analysis of Male Gloucestershire and District Claimant Counts

Male	Sep 24 Number	Sep 24 Rate	Aug 24 Number	Aug 24 Rate	Monthly change	% monthly change	Monthly change of rate
<b>Gloucestershire</b>	5,730	3.0	5,645	2.9	85	1.5%	0.1
Cheltenham	1,190	3.2	1,160	3.1	30	2.6%	0.1
Cotswold	480	1.9	505	2.0	-25	-5.0%	-0.1
Forest of Dean	845	3.3	835	3.3	10	1.2%	0.0
Gloucester	1,845	4.4	1,765	4.2	80	4.5%	0.2
Stroud	695	2.0	700	2.0	-5	-0.7%	0.0
Tewkesbury	675	2.5	680	2.5	-5	-0.7%	0.0

Table 3 shows the change in the male claimant count in September compared to August 2024. Cotswold, Stroud and Tewkesbury saw a decrease in the number of claimants, whilst all other districts saw an increase.

Table 4: Analysis of Female Gloucestershire and District Claimant Counts

Female	Sep 24 Number	Sep 24 Rate	Aug 24 Number	Aug 24 Rate	Monthly change	% monthly change	Monthly change of rate
<b>Gloucestershire</b>	5,295	2.7	5,300	2.7	-5	-0.1%	0.0
Cheltenham	1,020	2.7	1,045	2.8	-25	-2.4%	-0.1
Cotswold	525	1.9	535	2.0	-10	-1.9%	-0.1
Forest of Dean	775	3.0	775	3.0	0	0.0%	0.0
Gloucester	1,455	3.4	1,455	3.4	0	0.0%	0.0
Stroud	785	2.1	770	2.1	15	1.9%	0.0
Tewkesbury	730	2.5	720	2.5	10	1.4%	0.0

Table 4 shows the change in the female claimant count in September compared to August 2024. Cheltenham and Cotswold saw a decrease in the number of claimants, whilst Stroud and Tewkesbury saw an increase. All other districts remained the same.

## PART 4: LOCAL AUTHORITY DISTRICT AND WARD ANALYSIS

This section covers the six districts and a comparison of their constituent wards.

### 4.1 Cheltenham Borough

#### Claimant Rate and Claimant Count

Figure 3: Cheltenham Borough claimant rate over the last year

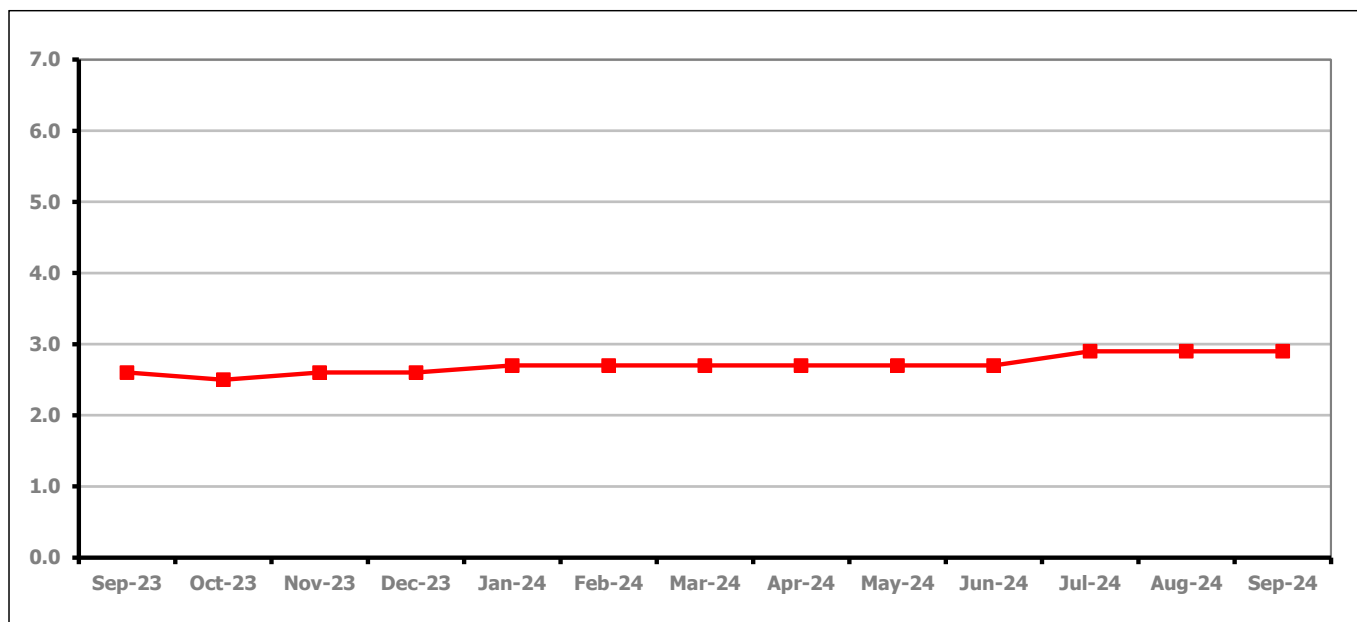


Figure 3 shows the claimant rate in Cheltenham remained at 2.9% in September 2024.

Figure 4: Claimant rates across Cheltenham Borough wards - September 2024

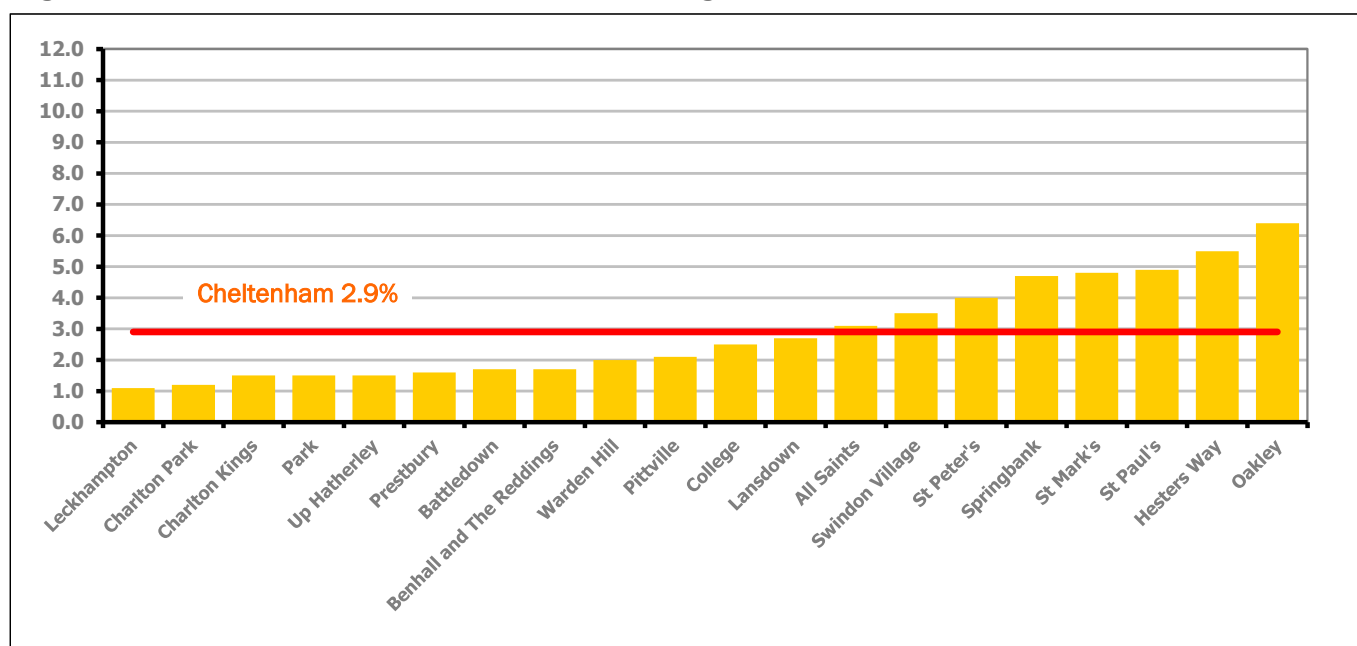


Figure 4 shows the claimant rates for Cheltenham Borough wards. The red line represents the average claimant rate across the Borough of 2.9%. Eight wards lie above the average.

## PART 4: LOCAL AUTHORITY DISTRICT AND WARD ANALYSIS

### 4.1 Cheltenham Borough continued...

Table 5: Analysis of Claimant Count at Cheltenham Borough ward level - September 2024

District	Ward	Rate	Rank*
Cheltenham	Leckhampton	1.1	3
Cheltenham	Charlton Park	1.2	5
Cheltenham	Charlton Kings	1.5	25
Cheltenham	Park	1.5	25
Cheltenham	Up Hatherley	1.5	25
Cheltenham	Prestbury	1.6	32
Cheltenham	Battledown	1.7	38
Cheltenham	Benhall and The Reddings	1.7	38
Cheltenham	Warden Hill	2.0	59
Cheltenham	Pittville	2.1	67
Cheltenham	College	2.5	82
Cheltenham	Lansdown	2.7	89
Cheltenham	All Saints	3.1	106
Cheltenham	Swindon Village	3.5	115
Cheltenham	St Peter's	4.0	120
Cheltenham	Springbank	4.7	125
Cheltenham	St Mark's	4.8	126
Cheltenham	St Paul's	4.9	128
Cheltenham	Hesters Way	5.5	131
Cheltenham	Oakley	6.4	135

	lowest 10% of county
	first quartile of county
	second quartile of county
	third quartile of county
	fourth quartile of county
	highest 10% of county

\* 1 = "best" and 138 = "worst"

Table 5 shows overall claimant rates for Cheltenham Borough wards and their position relative to all wards in Gloucestershire.

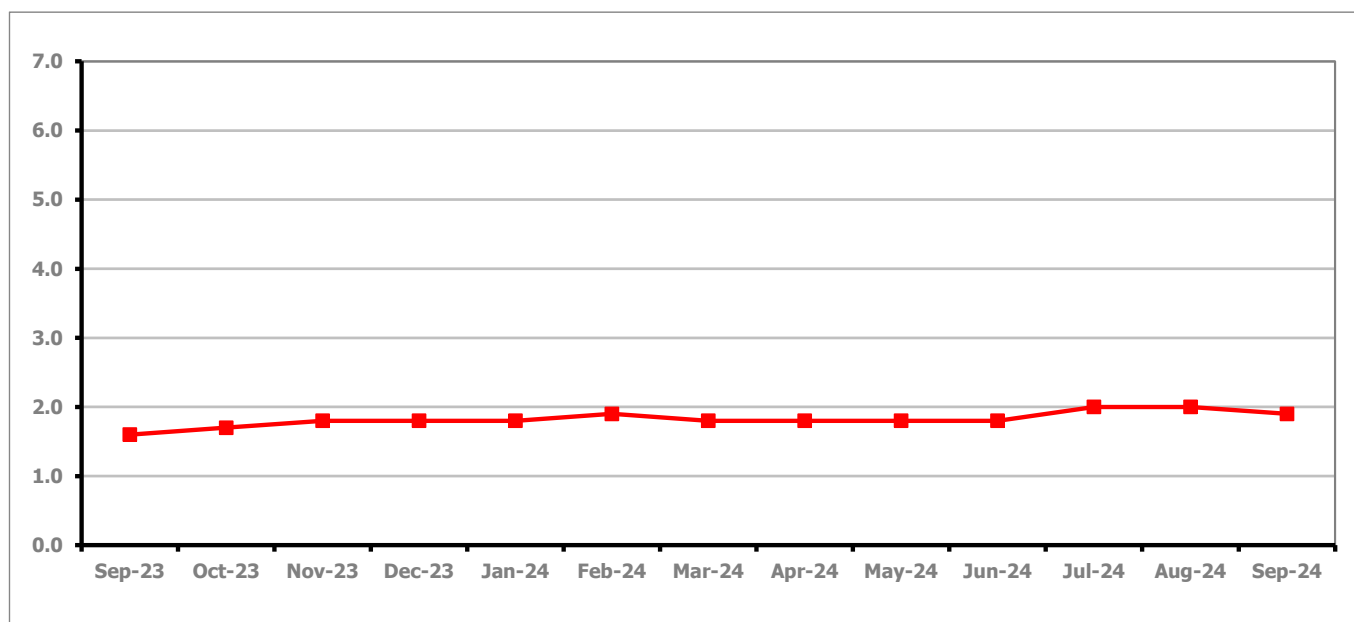
**PART 4: LOCAL AUTHORITY DISTRICT AND WARD ANALYSIS****4.2 Cotswold District****Claimant Rate and Claimant Count***Figure 5: Cotswold District claimant rate over the last year*

Figure 5 shows the claimant rate in Cotswold District decreased to 1.9% in September 2024.

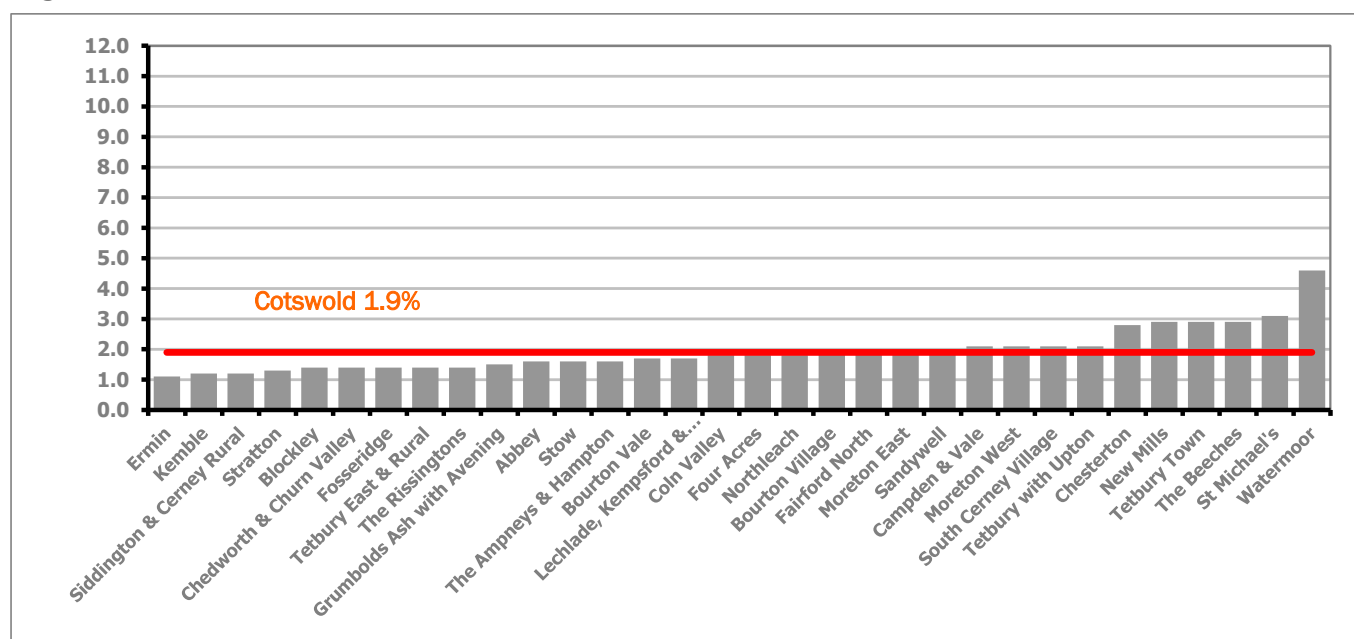
*Figure 6: Claimant rates across Cotswold District wards – September 2024*

Figure 6 shows the claimant rates for Cotswold District wards. The red line represents the average claimant rate across the District of 1.9%. Thirteen wards lie above the average.



## PART 4: LOCAL AUTHORITY DISTRICT AND WARD ANALYSIS

### 4.2 Cotswold District continued...

Table 6: Analysis of Claimant Count at Cotswold District ward level - September 2024

District	Ward	Rate	Rank*
Cotswold	Ermin	1.1	3
Cotswold	Kemble	1.2	5
Cotswold	Siddington & Cerney Rural	1.2	5
Cotswold	Stratton	1.3	9
Cotswold	Blockley	1.4	13
Cotswold	Chedworth & Churn Valley	1.4	13
Cotswold	Fosseridge	1.4	13
Cotswold	Tetbury East & Rural	1.4	13
Cotswold	The Rissingtons	1.4	13
Cotswold	Grumbolds Ash with Avening	1.5	25
Cotswold	Abbey	1.6	32
Cotswold	Stow	1.6	32
Cotswold	The Ampneys & Hampton	1.6	32
Cotswold	Bourton Vale	1.7	38
Cotswold	Lechlade, Kempsford & Fairford South	1.7	38
Cotswold	Coln Valley	1.8	44
Cotswold	Four Acres	1.8	44
Cotswold	Northleach	1.8	44
Cotswold	Bourton Village	1.9	52
Cotswold	Fairford North	2.0	59
Cotswold	Moreton East	2.0	59
Cotswold	Sandywell	2.0	59
Cotswold	Campden & Vale	2.1	67
Cotswold	Moreton West	2.1	67
Cotswold	South Cerney Village	2.1	67
Cotswold	Tetbury with Upton	2.1	67
Cotswold	Chesterton	2.8	95
Cotswold	New Mills	2.9	97
Cotswold	Tetbury Town	2.9	97
Cotswold	The Beeches	2.9	97
Cotswold	St Michael's	3.1	106
Cotswold	Watermoor	4.6	123

	lowest 10% of county
	first quartile of county
	second quartile of county
	third quartile of county
	fourth quartile of county
	highest 10% of county

\* 1 = "best" and 138 = "worst"

Table 6 shows overall claimant rates for Cotswold District wards and their position relative to all wards in Gloucestershire.

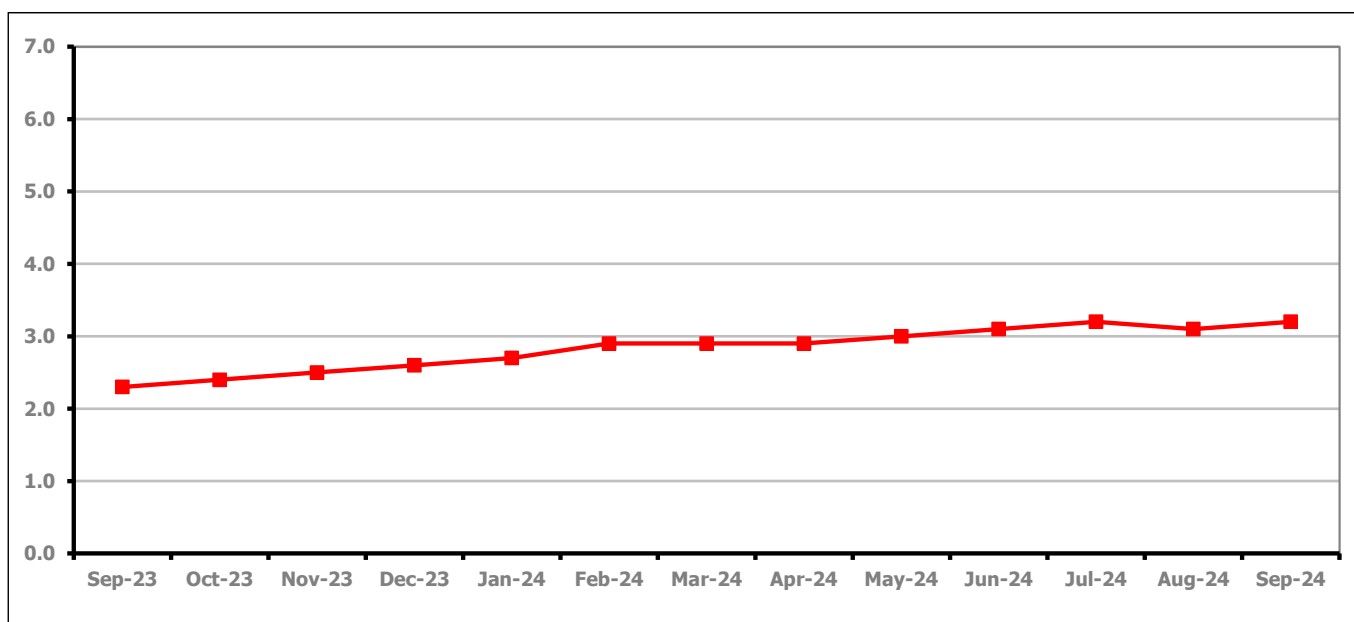
**PART 4: LOCAL AUTHORITY DISTRICT AND WARD ANALYSIS****4.3 Forest of Dean District****Claimant Rate and Claimant Count***Figure 7: Forest of Dean District claimant rate over the last year*

Figure 7 shows the claimant rate in the Forest of Dean increased to 3.2% in September 2024.

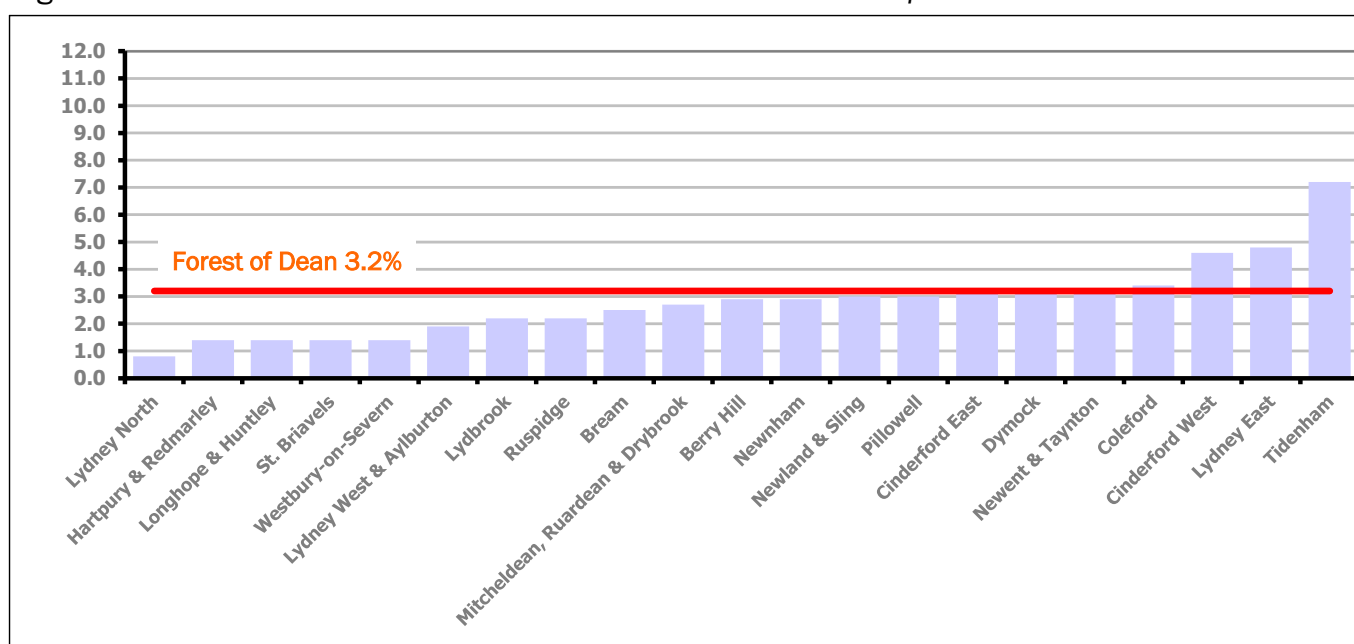
*Figure 8: Claimant rates across Forest of Dean District wards – September 2024*

Figure 8 shows the claimant rates for the Forest of Dean District wards. The red line represents the average claimant rate across the District of 3.2%. Six wards lie above the average.

**PART 4: LOCAL AUTHORITY DISTRICT AND WARD ANALYSIS****4.3 Forest of Dean District continued...***Table 7: Analysis of Claimant Count at Forest of Dean District ward level - September 2024*

District	Ward	Rate	Rank*
Forest	Lydney North	0.8	1
Forest	Hartpury & Redmarley	1.4	13
Forest	Longhope & Huntley	1.4	13
Forest	St. Briavels	1.4	13
Forest	Westbury-on-Severn	1.4	13
Forest	Lydney West & Aylburton	1.9	52
Forest	Lydbrook	2.2	74
Forest	Ruspidge	2.2	74
Forest	Bream	2.5	82
Forest	Mitcheldean, Ruardean & Drybrook	2.7	89
Forest	Berry Hill	2.9	97
Forest	Newnham	2.9	97
Forest	Newland & Sling	3.0	102
Forest	Pillowell	3.0	102
Forest	Cinderford East	3.2	110
Forest	Dymock	3.3	112
Forest	Newent & Taynton	3.3	112
Forest	Coleford	3.4	114
Forest	Cinderford West	4.6	123
Forest	Lydney East	4.8	126
Forest	Tidenham	7.2	136

	lowest 10% of county
	first quartile of county
	second quartile of county
	third quartile of county
	fourth quartile of county
	highest 10% of county

\* 1 = "best" and 138 = "worst"

Table 7 shows overall claimant rates for the Forest of Dean District wards and their position relative to all wards in Gloucestershire.

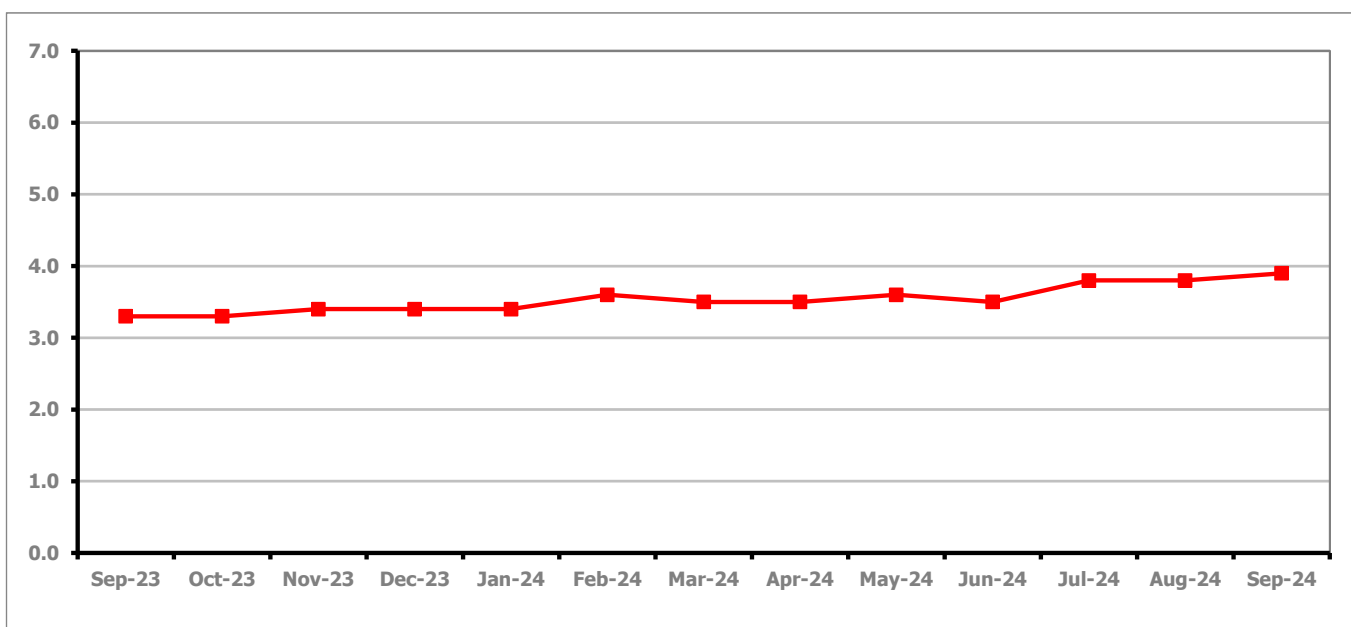
**PART 4: LOCAL AUTHORITY DISTRICT AND WARD ANALYSIS****4.4 Gloucester City****Claimant Rate and Claimant Count***Figure 9: Gloucester City claimant rate over the last year*

Figure 9 shows the claimant rate for Gloucester City increased to 3.9% in September 2024.

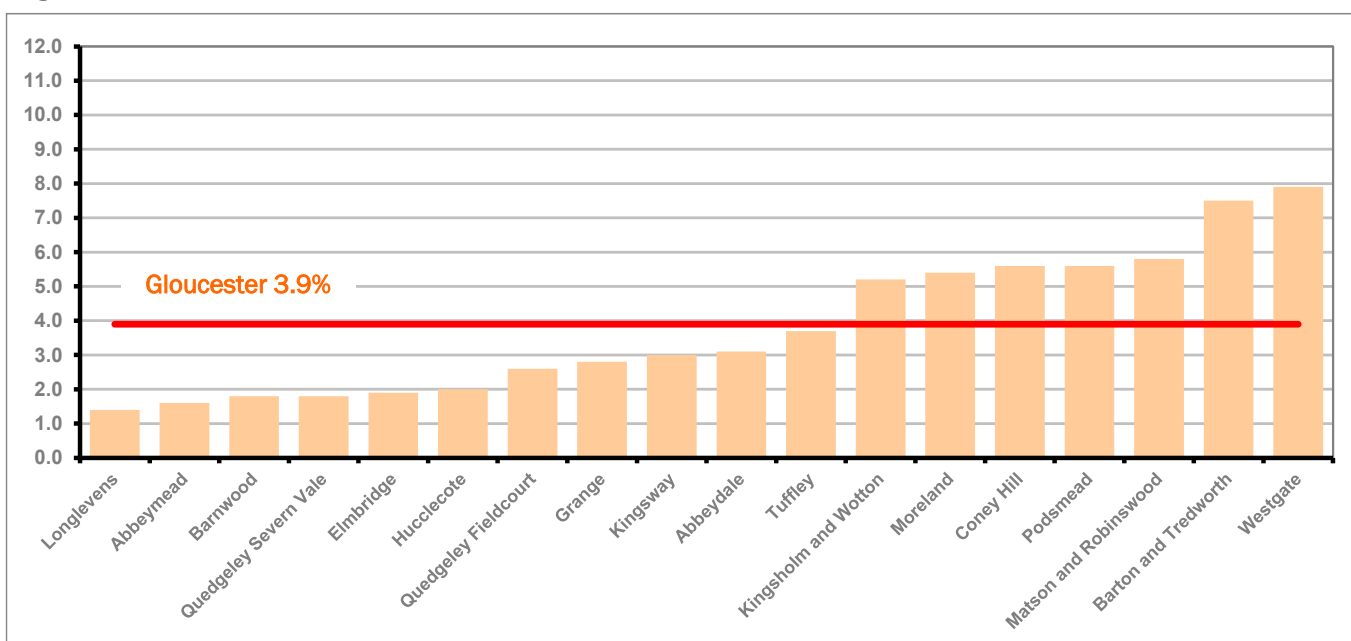
*Figure 10: Claimant rates across Gloucester City wards - September 2024*

Figure 10 shows the claimant rates for Gloucester City district wards. The red line represents the average claimant rate across the City of 3.9%. Seven wards lie above the average.

## PART 4: LOCAL AUTHORITY DISTRICT AND WARD ANALYSIS

### 4.4 Gloucester City continued...

Table 8: Analysis of Claimant Count at Gloucester City ward level - September 2024

District	Ward	Rate	Rank*
Gloucester	Longlevens	1.4	13
Gloucester	Abbeymead	1.6	32
Gloucester	Barnwood	1.8	44
Gloucester	Quedgeley Severn Vale	1.8	44
Gloucester	Elmbridge	1.9	52
Gloucester	Hucclecote	2.0	59
Gloucester	Quedgeley Fieldcourt	2.6	85
Gloucester	Grange	2.8	95
Gloucester	Kingsway	3.0	102
Gloucester	Abbeydale	3.1	106
Gloucester	Tuffley	3.7	118
Gloucester	Kingsholm and Wotton	5.2	129
Gloucester	Moreland	5.4	130
Gloucester	Coney Hill	5.6	132
Gloucester	Podsmead	5.6	132
Gloucester	Matson and Robinswood	5.8	134
Gloucester	Barton and Tredworth	7.5	137
Gloucester	Westgate	7.9	138

	lowest 10% of county
	first quartile of county
	second quartile of county
	third quartile of county
	fourth quartile of county
	highest 10% of county

\* 1 = "best" and 138 = "worst"

Table 8 shows overall claimant rates for Gloucester City wards and their position relative to all wards in Gloucestershire.

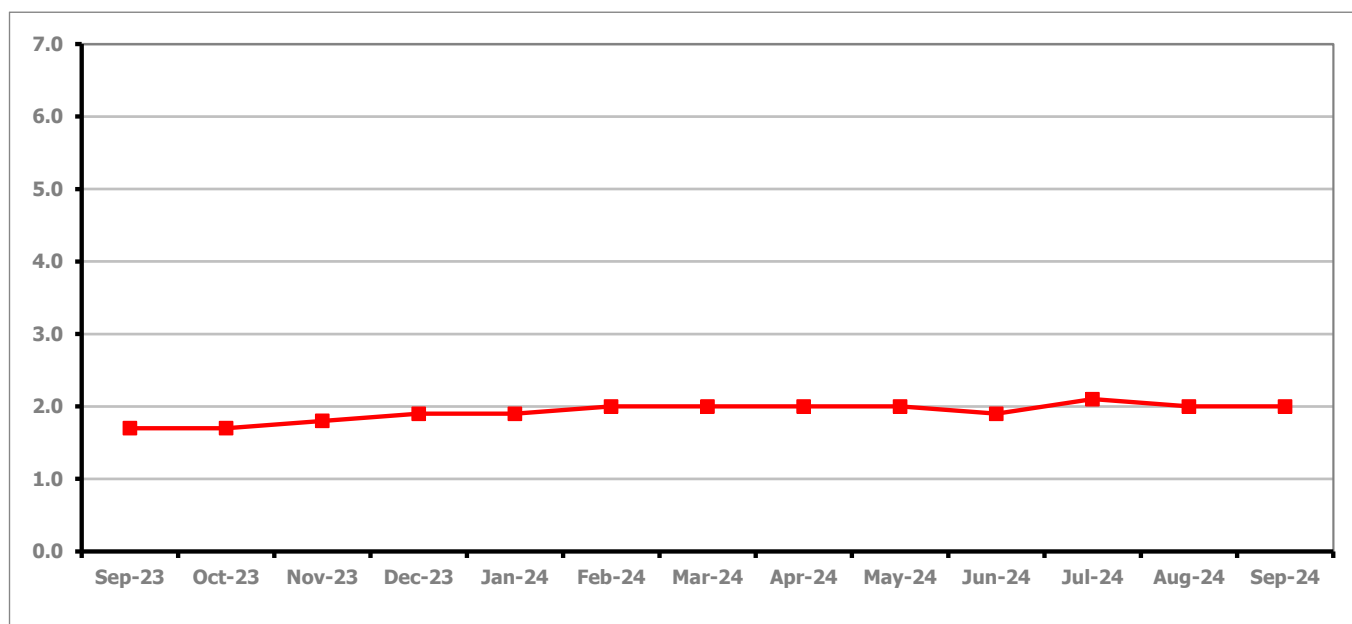
**PART 4: LOCAL AUTHORITY DISTRICT AND WARD ANALYSIS****4.5 Stroud District****Claimant Rate and Claimant Count***Figure 11: Stroud District claimant rate over the last year*

Figure 11 shows the claimant rate for Stroud remained at 2.0% in September 2024.

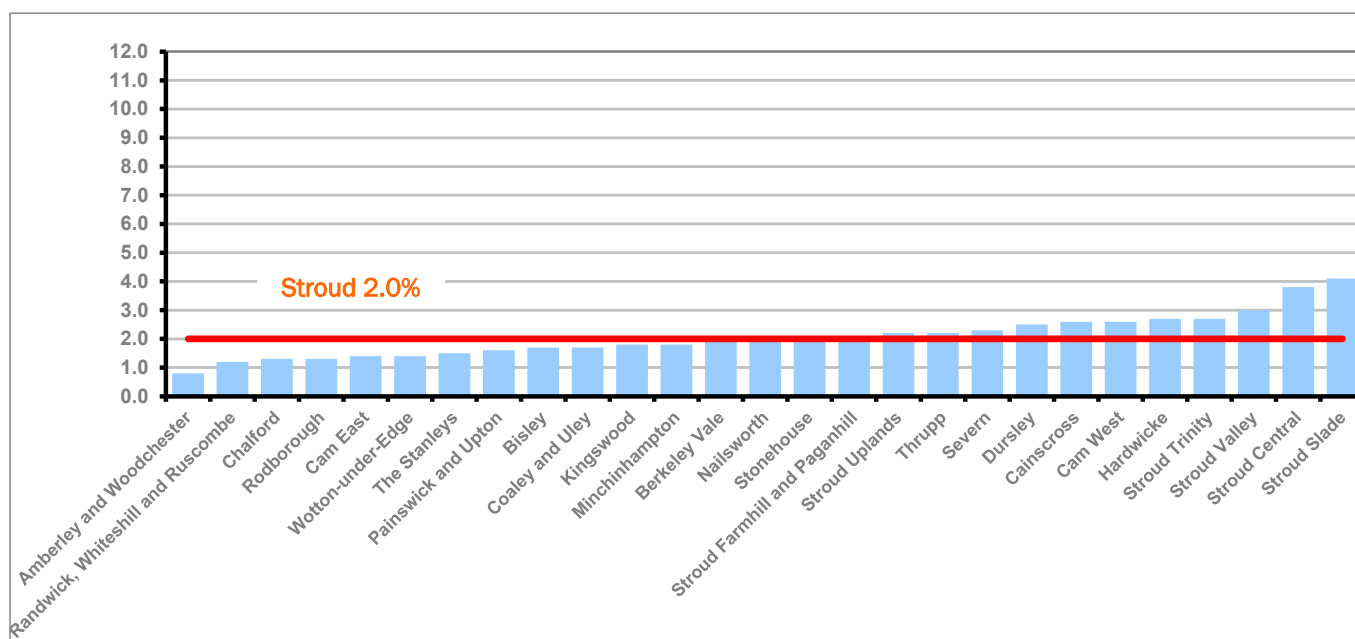
*Figure 12: Claimant rates across Stroud District wards - September 2024*

Figure 12 shows the claimant rates in Stroud District wards. The red line represents the average claimant rate across the District of 2.0%. Eleven wards are above the average.

## PART 4: LOCAL AUTHORITY AND DISTRICT ANALYSIS

### 4.5 Stroud District continued...

Table 9: Analysis of Claimant Count at Stroud District ward level - September 2024

District	Ward	Rate	Rank*
Stroud	Amberley and Woodchester	0.8	1
Stroud	Randwick, Whiteshill and Ruscombe	1.2	5
Stroud	Chalford	1.3	9
Stroud	Rodborough	1.3	9
Stroud	Cam East	1.4	13
Stroud	Wotton-under-Edge	1.4	13
Stroud	The Stanleys	1.5	25
Stroud	Painswick and Upton	1.6	32
Stroud	Bisley	1.7	38
Stroud	Coaley and Uley	1.7	38
Stroud	Kingswood	1.8	44
Stroud	Minchinhampton	1.8	44
Stroud	Berkeley Vale	1.9	52
Stroud	Nailsworth	1.9	52
Stroud	Stonehouse	2.0	59
Stroud	Stroud Farmhill and Paganhill	2.0	59
Stroud	Stroud Uplands	2.2	74
Stroud	Thrupp	2.2	74
Stroud	Severn	2.3	79
Stroud	Dursley	2.5	82
Stroud	Cainscross	2.6	85
Stroud	Cam West	2.6	85
Stroud	Hardwicke	2.7	89
Stroud	Stroud Trinity	2.7	89
Stroud	Stroud Valley	3.0	102
Stroud	Stroud Central	3.8	119
Stroud	Stroud Slade	4.1	121

	lowest 10% of county
	first quartile of county
	second quartile of county
	third quartile of county
	fourth quartile of county
	highest 10% of county

\* 1 = "best" and 138 = "worst"

Table 9 shows overall claimant rates for Stroud District wards and their position relative to all wards in Gloucestershire.

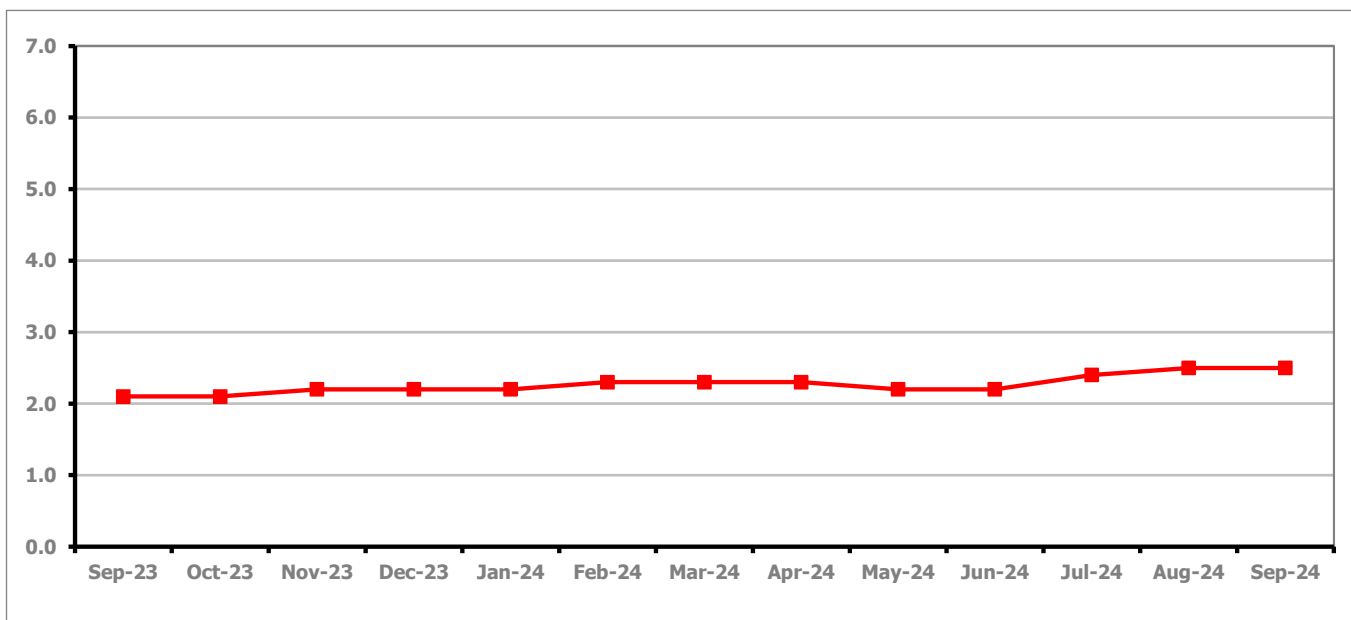
**PART 4: LOCAL AUTHORITY DISTRICT AND WARD ANALYSIS****4.6 Tewkesbury Borough****Claimant Rate and Claimant Count***Figure 13: Tewkesbury Borough claimant rate over the last year*

Figure 13 shows the claimant rate for Tewkesbury Borough remained at 2.5% in September 2024.

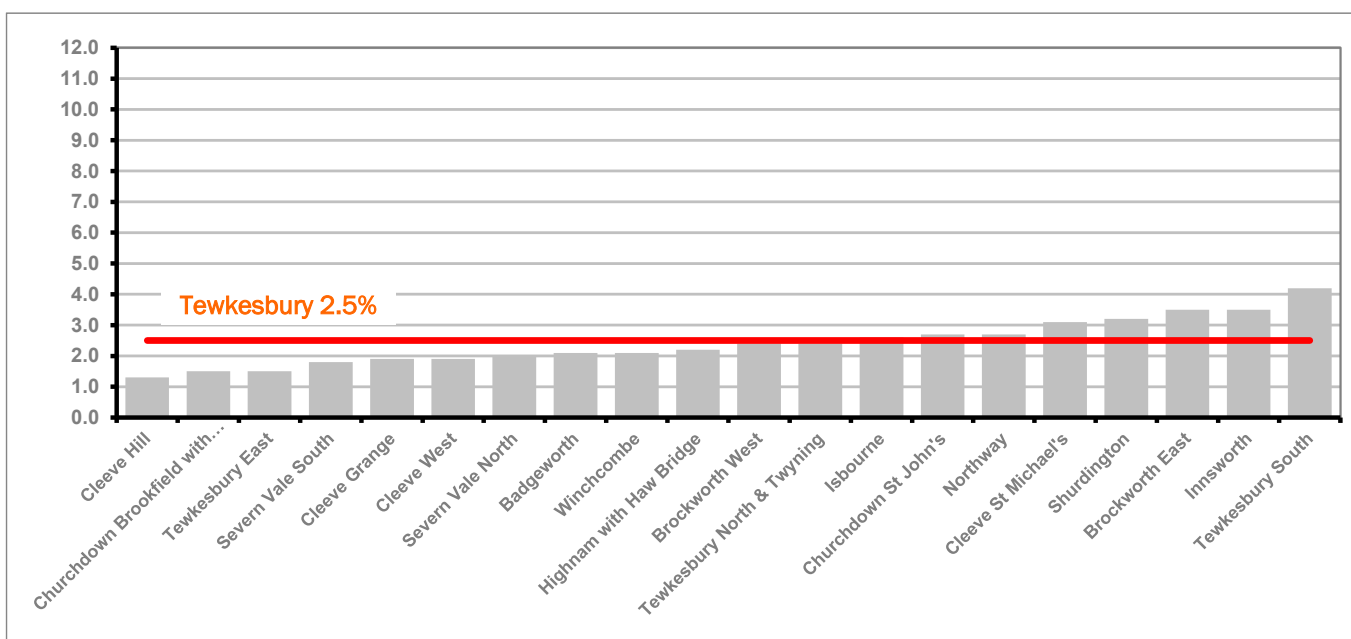
*Figure 14: Claimant rates across Tewkesbury Borough wards - September 2024*

Figure 14 shows the claimant rates in Tewkesbury Borough wards. The red line represents the average claimant rate across the District of 2.5%. Eight wards are above the average.



## PART 4: LOCAL AUTHORITY AND DISTRICT ANALYSIS

### 4.6 Tewkesbury Borough continued...

Table 10: Analysis of Claimant Count at Tewkesbury Borough level - September 2024

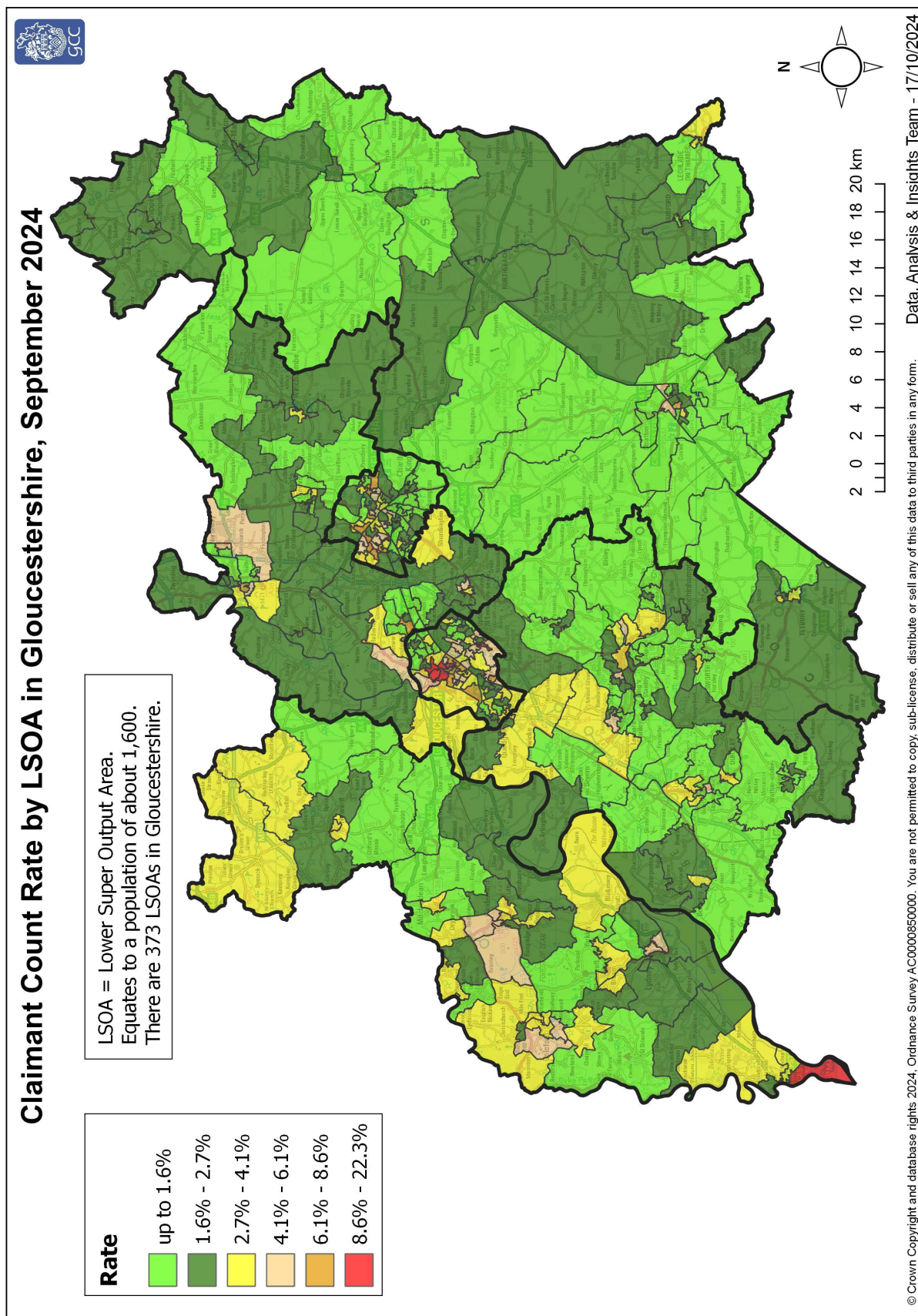
District	Ward	Rate	Rank*
Tewkesbury	Cleeve Hill	1.3	9
Tewkesbury	Churchdown Brookfield with Hucclecote	1.5	25
Tewkesbury	Tewkesbury East	1.5	25
Tewkesbury	Severn Vale South	1.8	44
Tewkesbury	Cleeve Grange	1.9	52
Tewkesbury	Cleeve West	1.9	52
Tewkesbury	Severn Vale North	2.0	59
Tewkesbury	Badgeworth	2.1	67
Tewkesbury	Winchcombe	2.1	67
Tewkesbury	Highnam with Haw Bridge	2.2	74
Tewkesbury	Brockworth West	2.4	80
Tewkesbury	Tewkesbury North & Twynning	2.4	80
Tewkesbury	Isbourne	2.6	85
Tewkesbury	Churchdown St John's	2.7	89
Tewkesbury	Northway	2.7	89
Tewkesbury	Cleeve St Michael's	3.1	106
Tewkesbury	Shurdington	3.2	110
Tewkesbury	Brockworth East	3.5	115
Tewkesbury	Innsworth	3.5	115
Tewkesbury	Tewkesbury South	4.2	122

	lowest 10% of county
	first quartile of county
	second quartile of county
	third quartile of county
	fourth quartile of county
	highest 10% of county

\* 1 = "best" and 138 = "worst"

Table 10 shows overall claimant rates for Tewkesbury Borough wards and their position relative to all wards in Gloucestershire.

## PART 5: MAP SHOWING DISTRIBUTION OF CLAIMANT RATE ACROSS GLOUCESTERSHIRE



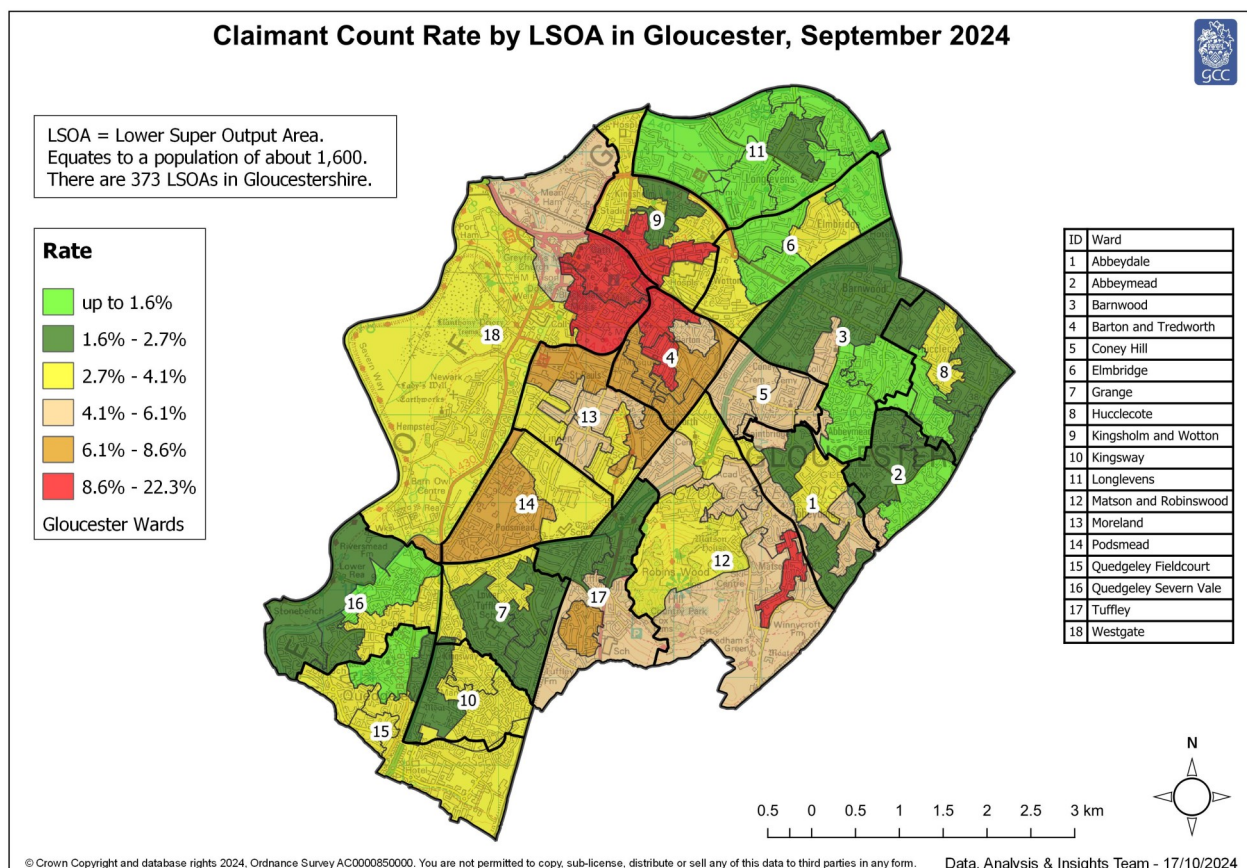
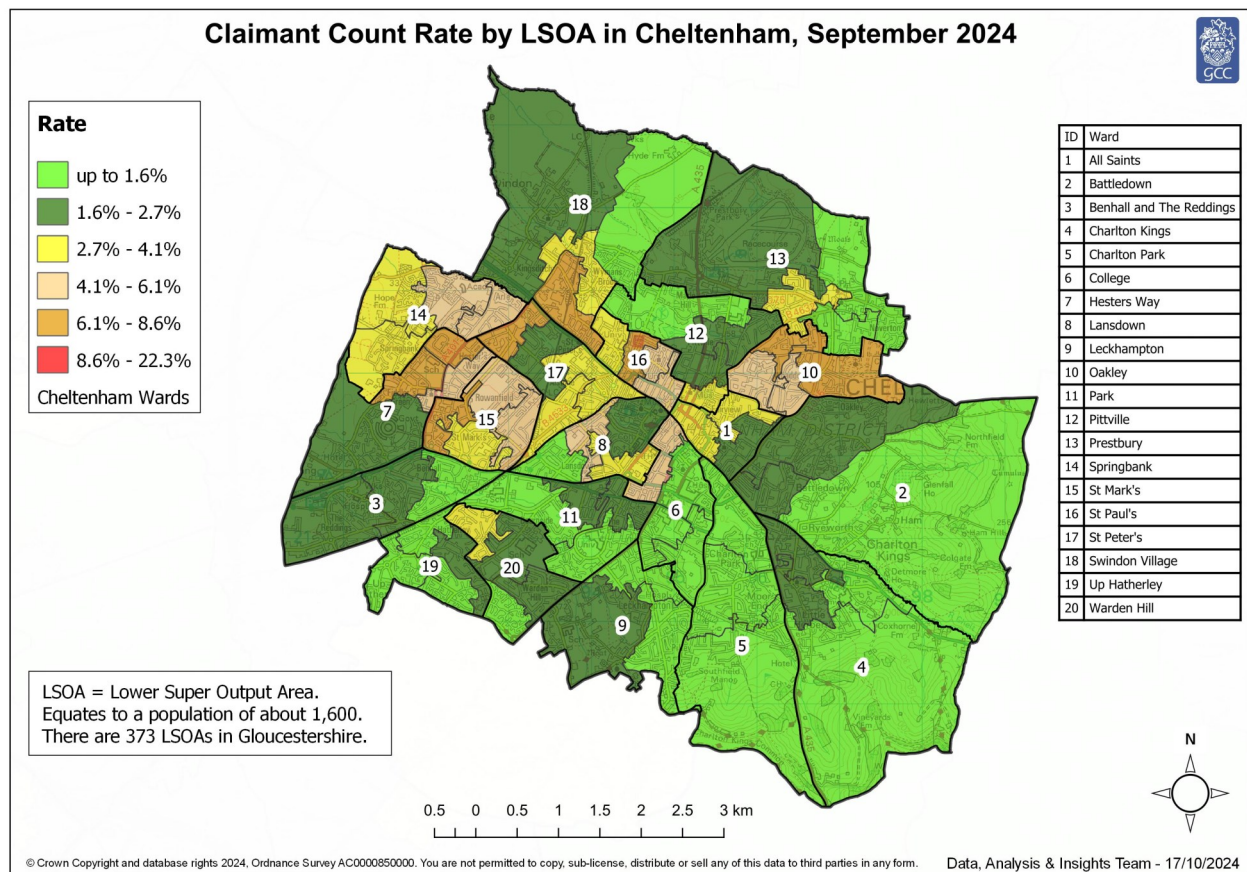
These maps currently show the 2011 LSOA boundaries.

Note: We have made changes to the way in which the rates illustrated on the maps are calculated - this means they are not comparable with those shown in previous bulletins.

Rates calculated using Lower Layer Super Output Area Population Estimates Mid-2020, Office for National Statistics



## PART 5: MAP SHOWING DISTRIBUTION OF CLAIMANT RATE ACROSS GLOUCESTERSHIRE



These maps currently show the 2011 LSOA boundaries.

Note: We have made changes to the way in which the rates illustrated on the maps are calculated - this means they are not comparable with those shown in previous bulletins.

Rates calculated using Lower Layer Super Output Area Population Estimates Mid-2020, Office for National Statistics

## PART 6: YOUTH UNEMPLOYMENT(18-24 year olds)

### Youth Claimant Rate and Claimant Count

Figure 15: Claimant Count for Gloucestershire over the past year

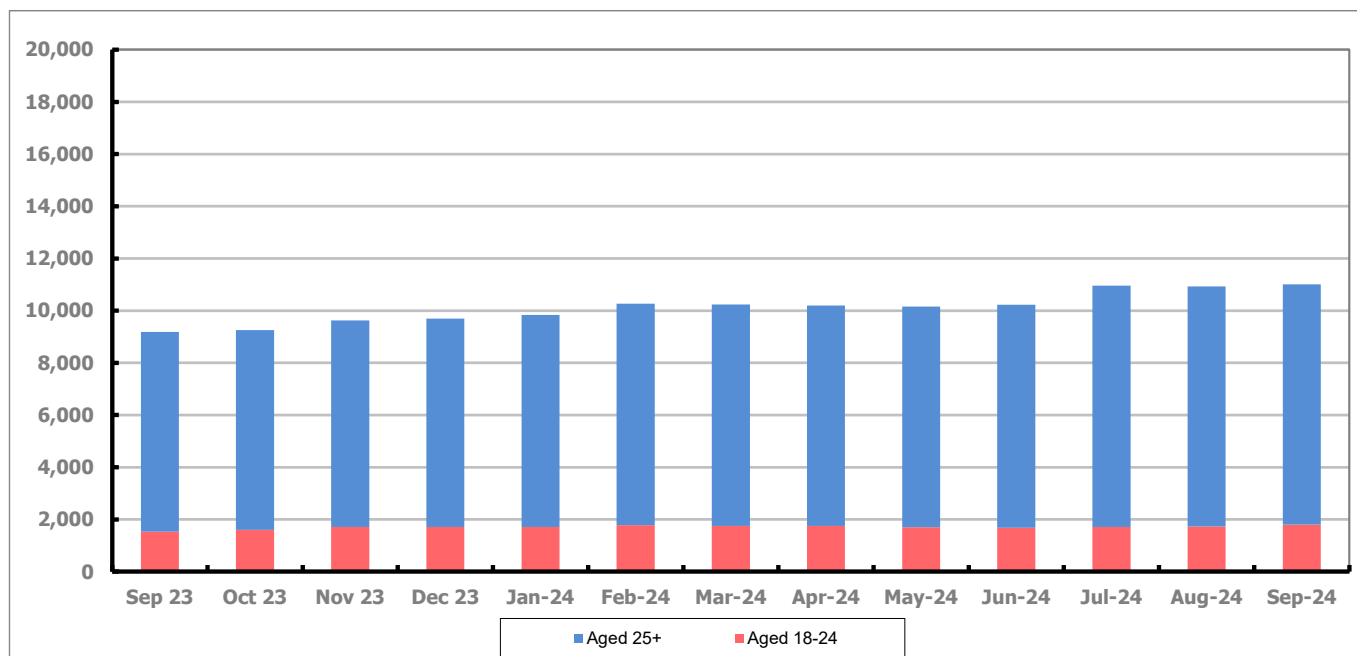


Figure 15 shows that in September 2024, 1,805 people aged 18-24 were claiming Job Seekers Allowance and Universal Credit who were not in work in Gloucestershire, this represents 16.4% of total working age claimants.

## PART 7: YOUNG PEOPLE NOT IN EDUCATION, EMPLOYMENT OR TRAINING (NEET) IN GLOUCESTERSHIRE

Data provided by Gloucestershire Youth Support Team on the situation of young people (16-18) in Gloucestershire who are not in education, employment or formal training.

Gloucestershire Youth Support Team is required to report performance on the Academic Year 12 and 13 (16/17 age) against nationally defined criteria for counting the NEET group to the Department for Education (DfE) on a monthly basis. The NEET group includes young people actively seeking education, employment or training as well as those young people who are either not yet ready or who are unable to access these opportunities because of their personal circumstances. The figures quoted below include young people in both of these categories.

(End of) September 2024

### Academic Year 12-13 Summary

	NEET	Cohort	%
Cheltenham	50	2470	2.02%
Cotswold	32	1822	1.76%
Forest	29	1746	1.66%
Gloucester	100	3541	2.82%
Stroud	29	2833	1.02%
Tewkesbury	34	2138	1.59%
Total	274	14550	1.88%

### 16-18 Age Summary

	NEET	Cohort	%
Cheltenham	84	3499	2.40%
Cotswold	46	2618	1.76%
Forest	51	2542	2.01%
Gloucester	177	5063	3.50%
Stroud	57	4101	1.39%
Tewkesbury	59	3084	1.91%
Total	474	20907	2.27%

16-18 Adjust NEET*	2.34%
--------------------	-------

Monthly Change	82	549	0.51%
Previous month	192	14001	1.37%

Monthly Change	82	6906	-0.53%
Previous month	392	14001	2.80%

The academic year 12-13 group contains a proportion of young people who turn 18 in the academic year but were 17 on the 31<sup>st</sup> August the previous academic year so are entitled to learning through RPA (raising participation age).

Please note all figures quoted above are subject to change before the submission date to the DfE which usually happens in the second or third week of the month for the previous month.

If you would like to receive any further information on Gloucestershire's NEET strategy, then please contact [Lynne.Speak@Prospects.co.uk](mailto:Lynne.Speak@Prospects.co.uk) or telephone 07900 391182.

(\*) Adjustment includes a proportion of young people aged 16-18 whose outcomes are not-known to Gloucestershire Youth Support Team.