

## Gloucestershire Safeguarding Adults Board (GSAB)

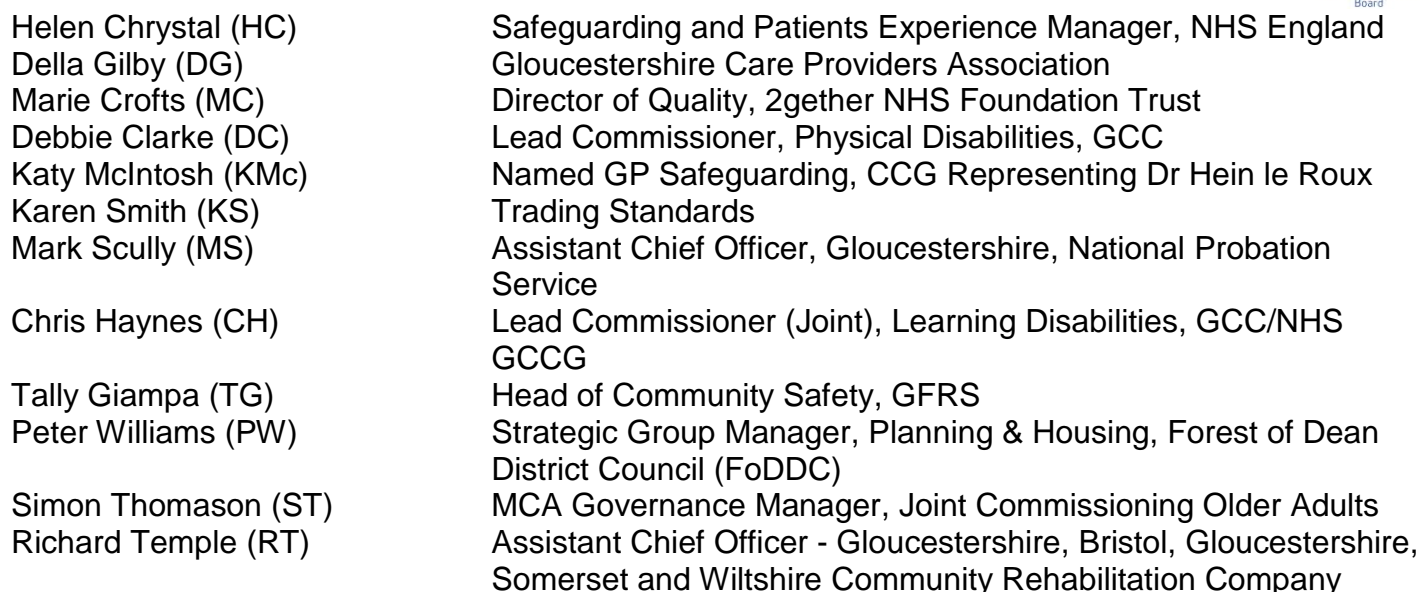
### Minutes of Meeting held on Tuesday 16<sup>th</sup> May 2017, 1pm, Shire Hall

#### Present:

Paul Yeatman (PY)	Independent Chair, GSAB
Sarah Jasper (SJ)	Acting Head of Safeguarding Adults, Gloucestershire County Council (GCC)
Ann Gribble (AG)	GSAB Business Manager, GCC
Dawn Porter (DP)	Head of Service for Integrated Adult Social Care, GCC
Susan Field (SF)	Director of Nursing, Gloucestershire Care Services (GCS) NHS Trust
Annette Blackstock (AB)	Specialist Nurse Safeguarding, GCCG Representing Marion Andrews-Evans
Karl Gluck (KG)	Lead Commissioner (Joint), Mental Health, NHS GCCG/GCC
Joanne Jordan (JJ)	Strategic Head (Customer Services), Stroud District Council
Simon Atkinson (SA)	Detective Superintendent, Gloucestershire Constabulary
Mary Morgan (MM)	Joint Commissioner, Older People, NHS/GCC
Paul Stephenson (PS)	Chief Executive, Cheltenham Borough Homes
Carole Stubbs (CS)	Department of Work and Pensions (DWP)
Amanda Murray (AM)	National Probation Service Representing Mark Scully
Agy Pasek (AP)	Learning Disabilities Team, GCC Representing Chris Haynes
Holly Beaman (HB)	Outcome Manager Commissioning, GCC Representing Debbie Clarke
Bev Harvey (BH)	Safeguarding Adults Training Co-ordinator, GCC Representing Angela Willis
Rob Fountain (RF)	Chief Executive, Age UK Gloucestershire
Judith Knight (JK)	Gloucestershire Diocese
David Peake (DP)	Adult Education, GCC
Alison Feher (AF)	Safeguarding Lead, 2gether NHSFT Representing Marie Crofts
Steve O'Neill (SO'N)	Outcome Manager, Substance Misuse, GCC
Emma Cooper (EC)	Healthwatch
Julia Butler (JB)	Healthwatch
Paul Gray (PG)	Safeguarding Adults Lead Specialist Practitioner, GCC
Richard Steptoe (RS)	Change, Grow, Live
Brendan Clifford (BC)	Independent Reviewer ('Hannah')
Carolyn Bell (CB) (Minutes)	Safeguarding Adults, GCC

#### Apologies:

Margaret Willcox (MW)	Commissioning Director: Adults & DASS, GCC
Councillor Kathy Williams (KW)	Cabinet Member for Long Term Care, GCC
Marion Andrews-Evans (MA-E)	Executive Nurse & Quality Lead, NHS GCCG
Sarah Scott (SS)	Director of Public Health, GCC
Angela Willis (AW)	Workforce Development Lead for GSAB, GCC
Maggie Arnold (MA)	Director of Nursing & Midwifery, GHNHSFT
Dr Hein le Roux (HIR)	Deputy Clinical Chair, GCCG
Julia Daunt (JD)	Inspection Manager, Adult Social Care Directorate, Gloucestershire, Care Quality Commission (CQC)
Matt Lennard (ML)	Head of Operations, VCS Alliance
Simon Hester (SH)	Named Safeguarding Professional, South Western Ambulance Service NHS Trust

Page 2 of 5

	<p>Wellbeing Partnership Board and the Gloucestershire Suicide Prevention Partnership Board and the board will have an assurance role taking them forward. AB asked whether parity of esteem was a particular concern in the county or a national issue; a holistic message could be shared across the county. MM and SF agreed that health is fragmented and asked how the message could be disseminated. Following the next review an event is going to be held to distil the learning and themes highlighted from previous reviews. It was agreed this needed to be taken to a national level, to impact on areas such as student training.</p> <p><b>Action: CB to circulate a copy of the Hannah Executive Summary to the board</b></p>	<b>CB</b>	
<b>7. Change, Grow, Live</b>	<p>The drug and alcohol commissioning function has moved from the NHS to the local authority. CGL have taken over the contract to provide an integrated drug and alcohol service and they have split the county into three areas: north, south west and south east, with three hubs in Gloucester, Cheltenham and Stroud. CGL are currently working with 1,850 clients, receiving referrals from individuals, GPs and the criminal justice system. CGL receive MARAC alerts; it was agreed they also need to link into the new Stalking Clinic, connections could also be made with Age UK.</p>		
<b>8. Gloucestershire Diocese</b>	<p>JK provided an update on the role of safeguarding in the Diocese of Gloucester. The county has 116 C of E schools, 390 churches and 302 parishes. Gloucester Cathedral runs a homeless Breakfast Club which 20-50 people a week attend. The Diocese has a safeguarding board, with an independent chair and representation from statutory partners. The Diocese also has dementia friendly churches.</p>		
<b>9. CSE Update</b>	<p>No update provided.</p>		
<b>10. Healthwatch</b>	<p>Evolving Communities through Healthwatch Wilshire are the new provider. Healthwatch is the local independent consumer champion for health and care providing research, evaluation and consultation. The role includes monitoring the quality of services, promoting people's engagement and signposting. Healthwatch will contribute to the work of the board and its sub groups and share their reports.</p> <p><b>Action: Healthwatch contact information to be sent out to the board</b></p>	<b>CB</b>	
<b>11. Court of Protection Report</b>	<p>The Law Commission proposals for updating DoLS have been published, called Liberty Protection Safeguards. They will apply to a wider range of settings including supported living, shared lives and private residences and will include 16 and 17 year olds. The body responsible for arranging the care or treatment will be responsible for commissioning the assessments and providing the authorisation. KG queried how a consistency of approach would be maintained.</p>		

12.	<p><b>Update on Safeguarding Concerns</b></p> <p><b>12.1 Learning Disabilities</b> Following an incident, the quality team have carried out checks on all of the providers accommodation; one home has closed and another is being transferred to a different provider. There are currently three Performance Improvement Plans (PIPs) in place.</p> <p><b>12.2 Large Scale Enquiries</b> One former care home, which has transferred to supported living is currently being investigated.</p> <p><b>12.3 Physical Disabilities</b> Inclusion Gloucestershire have been re-commissioned to complete quality checks, follow ups and out of county placements.</p> <p><b>12.4 Mental Health</b> Extra funding from NHS England has been provided to commission a service for victims of historic sexual abuse; this is in addition to the SARC.</p> <p><b>12.5 Older People</b> There are plans to broaden the service to include people from different categories such as learning disabilities, mental health and older people. If a provider has the skills to meet various needs it could expand the services it offers to a wider range of service users. In future older people will be used to assess their own services.</p>		
13.	<p><b>Strategic Plan</b> (Papers distributed prior to the meeting)</p> <p><b>13.1 Strategic Plan 2015/18</b> A three year plan, running until March 2018. Some items will continue into the next three year plan, these include service user engagement and MSP.</p> <p><b>Action: Feedback on the Strategic Plan to CB by 31<sup>st</sup> May</b></p>	ALL	
14.	<p><b>Risk Register</b> (Paper distributed prior to the meeting)</p> <p><b>14.1 Risk Register 2015/18</b> Pages 2 and 3 contain a summary of the data. There is one new risk, item 4.2, covering the accuracy of performance data, this issue is currently ongoing.</p> <p><b>Action: Feedback on the Risk Register to CB by 31<sup>st</sup> May</b></p>	ALL	
15.	<p><b>Sub-Group Reports</b> (Papers distributed prior to the meeting)</p> <p><b>15.1 – Safeguarding Adults Review (SAR)</b> <b>LC –</b> SJ has conducted a review on behalf of NHS England. A victim of sexual abuse, LC drowned in the bath following a seizure, having taken anti-depressants. He was on the SARC historical waiting list. SJ and PY have met with LCs family and shared the contents of the report. KG said those on the waiting list could still access the crisis helpline if required; this information needs to be publicised widely. It was agreed crisis contact details would be included in the report. <b>Action: SJ and KG to discuss the wording for the crisis contact information in the LC report</b></p> <p><b>YB –</b> Recommendations are currently being progressed.</p> <p><b>AD –</b> This case is being reviewed through the Learning Disability Mortality Review (LeDeR).</p> <p><b>CH –</b> This case is being reviewed through LeDeR.</p> <p><b>LM –</b> This serious incident does not meet the criteria for a SAR; the issues focus around out of county commissioning. Prosecutions are pending with a court date set for June; media interest in the case is expected. EC suggested the case is raised with the Chair of the Essex board.</p> <p><b>DK –</b> A review is to be conducted and an Independent Author will be sought.</p> <p><b>15.2 – Quality Assurance</b></p>	SJ/ KG	

	<p><b>15.2.1 Audit Group</b> An audit of SAFE1 MSP data highlighted that more work with adult social care teams is needed to evidence MSP. MSP is happening, but it is not reflected in the recording.</p> <p><b>15.2.2 Performance Dashboard</b> There are some issues regarding the quality of the data. The drop in concern numbers is as a result of the advice line and more appropriate reporting. GCS have undertaken a campaign to publicise the advice line and the process to follow.</p> <p><b>15.2.3 Making Safeguarding Personal</b> Update provided by PY.</p> <p><b>15.3 – Policy &amp; Workforce Development</b> Four policies were ratified: Safer Recruitment, Whistleblowing, SAR Protocol and the Escalation Policy. It was agreed the Out of Contact Protocol would be circulated for comment and then published. Successful GP training has taken place and BH has met with GHNHSFT to discuss benchmarking the Level 2 safeguarding training. The self neglect training resource, produced for the roadshows, is available on the GSAB website for anyone to use.</p> <p><b>15.4 – Communication &amp; Engagement</b> The group is to separate, with adults establishing their own sub group, with inclusion from the voluntary sector. A further service user engagement group will sit below this group. AG attended the Take Five over Tea Age UK event where there was lots of interest in the GSAB stall; approximately 80 people attended the event.</p> <p><b>15.5 – Fire Safety Development Group</b> The action plan for the year is being finalised. A fire safety webpage is currently being produced.</p> <p><b>15.6 – Deprivation of Liberty Safeguards (DoLS: MCA)</b> The backlog remains steady at 1250 cases. Four councils have lost their High Court challenge for additional funding; the judge found the failure by the government to provide additional funding did not amount to an “unacceptable risk of illegality”. New Coroners guidance states those who die whilst under a DoLS are not classed as under state detention and there is now no requirement to notify the coroner.</p>		
16.	<p><b>Cross Cutting Issues</b></p> <p><b>16.1 To Follow up with GSCB</b> At the children’s board assurances were provided that case reviews will be responded to in a timely manner. Children’s have a well established audit tool; but it provided a false picture. Adults have no established audit tool currently; the QA framework is in place.</p> <p><b>16.2 Issues to be raised with NHS (South) QSG</b> Nil</p>		
17.	<p><b>Any Other Business</b> Nil.</p>		
	<p><b>Date of next meeting: Thursday 7<sup>th</sup> September 2017, 9.30am, Meeting Rooms 1 &amp; 2, Shire Hall</b></p>		