

Overview of Corporate Performance Quarter Q2 2018/19

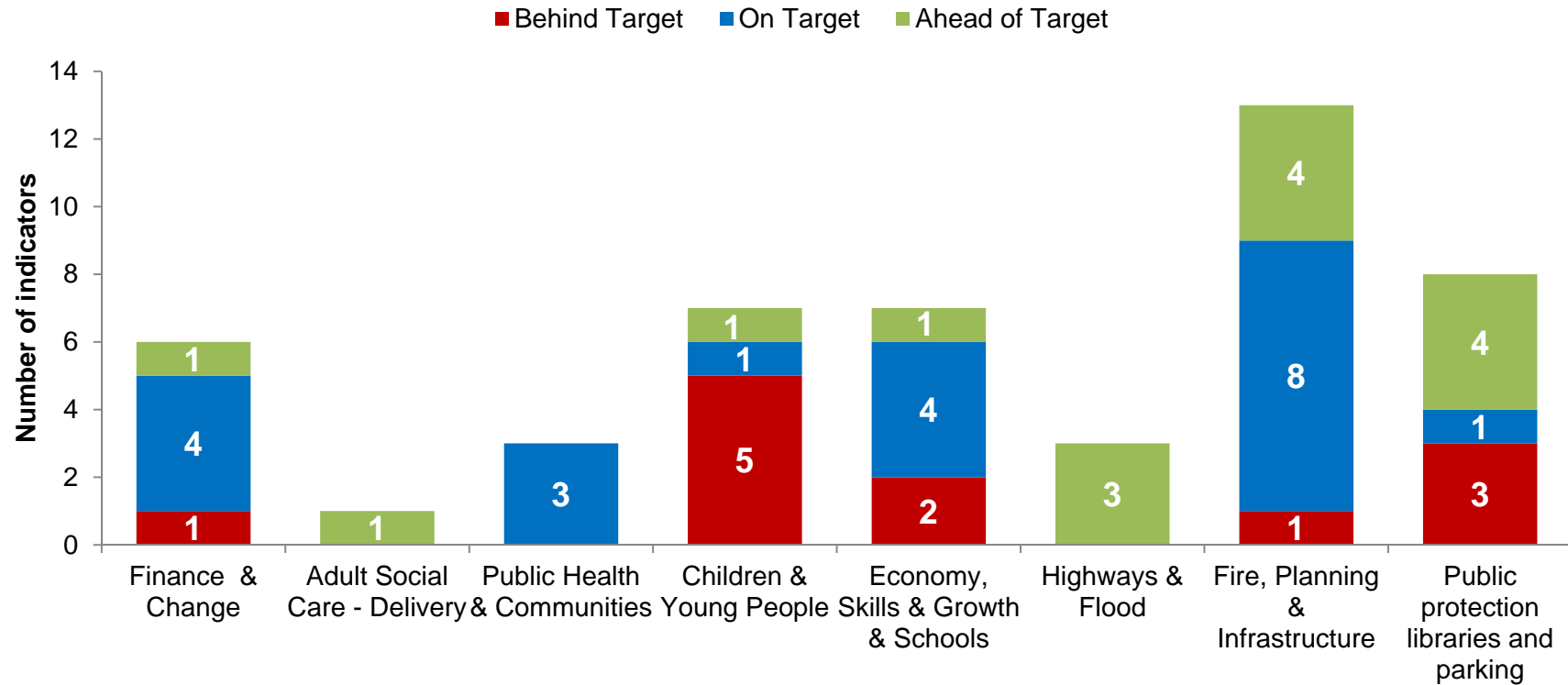
Overview Management and Scrutiny Committee

30th November 2018

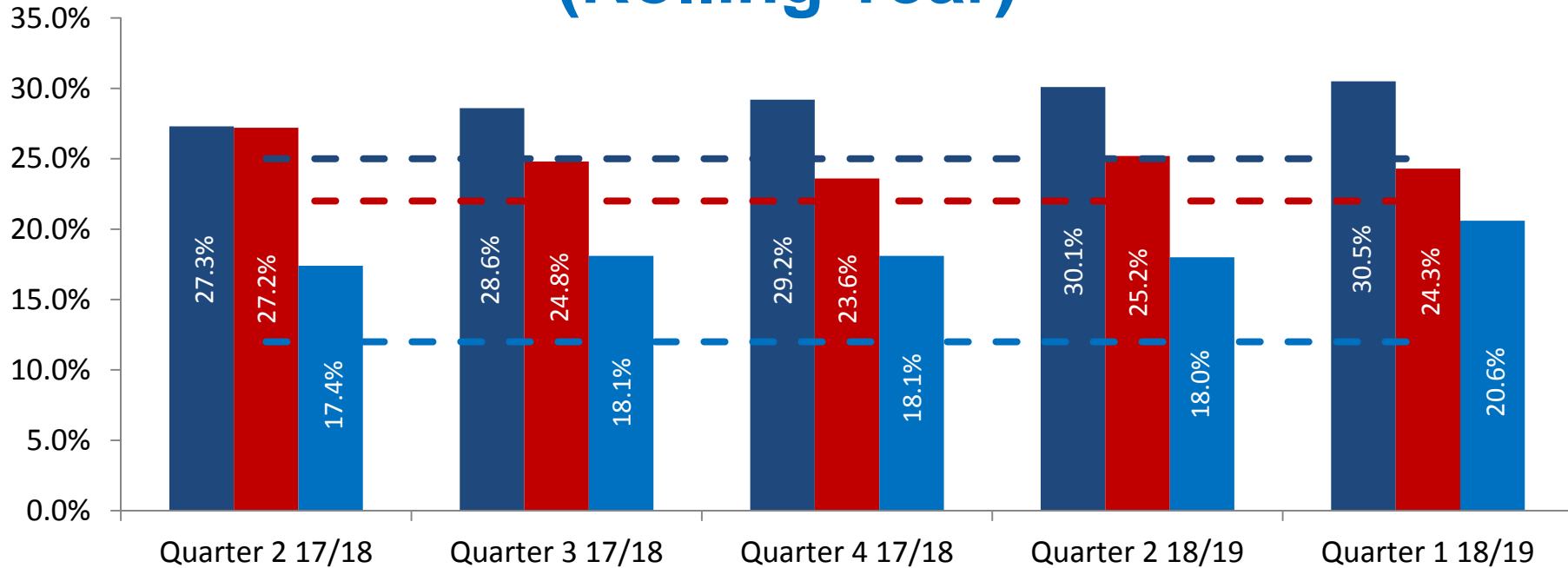
Presented by Rob Ayliffe

Meeting or exceeding targets 75% overall

80% excluding Children's Services indicators of long-term quality of practice



Children's Social Care - Levels of Re-work (Rolling Year)



■ % of referrals that are rereferrals within 12 months

■ % of children admitted to care who have previously been in care

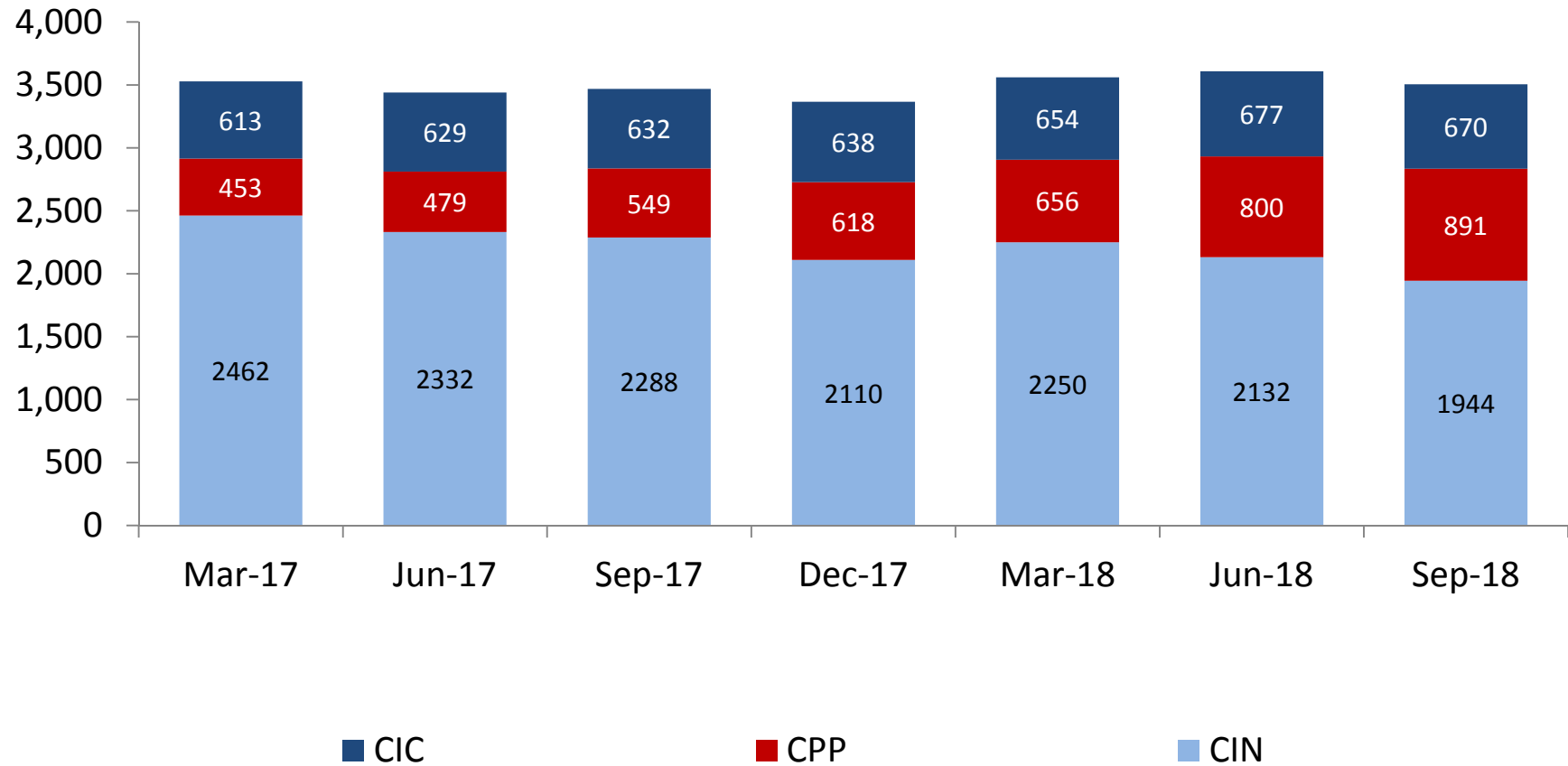
- - - Target-% of children becoming the subject of a CPP for a 2nd or subsequent time

■ % of children becoming the subject of a CPP for a 2nd or subsequent time

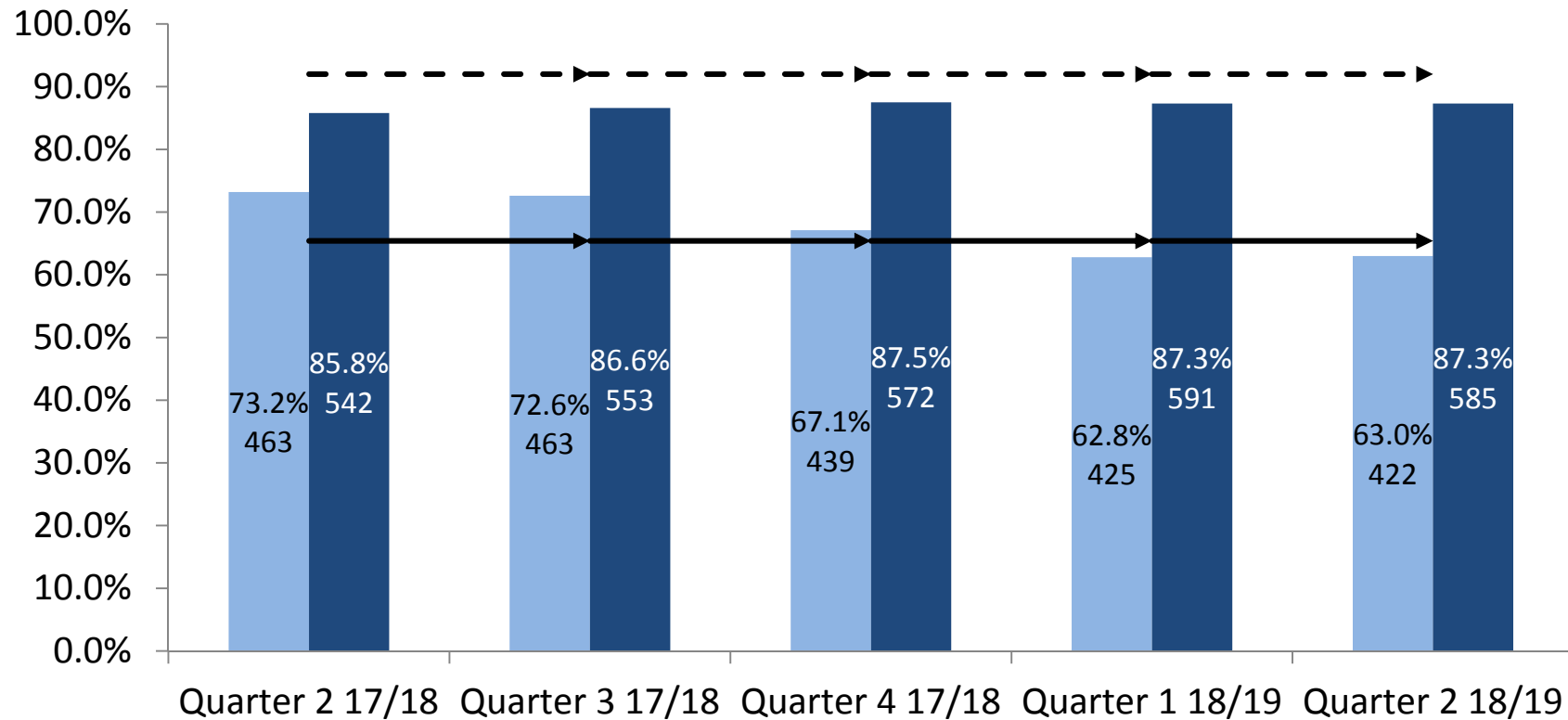
- - - Target - % of referrals that are rereferrals within 12 months

- - - Target-% of children admitted to care who have previously been in care

Numbers of Children Open to Social Care by Status – Q2 2018/19 Snapshot



Children in Care – placement stability Snapshot



■ % of children living in the same placement for 2 years or more

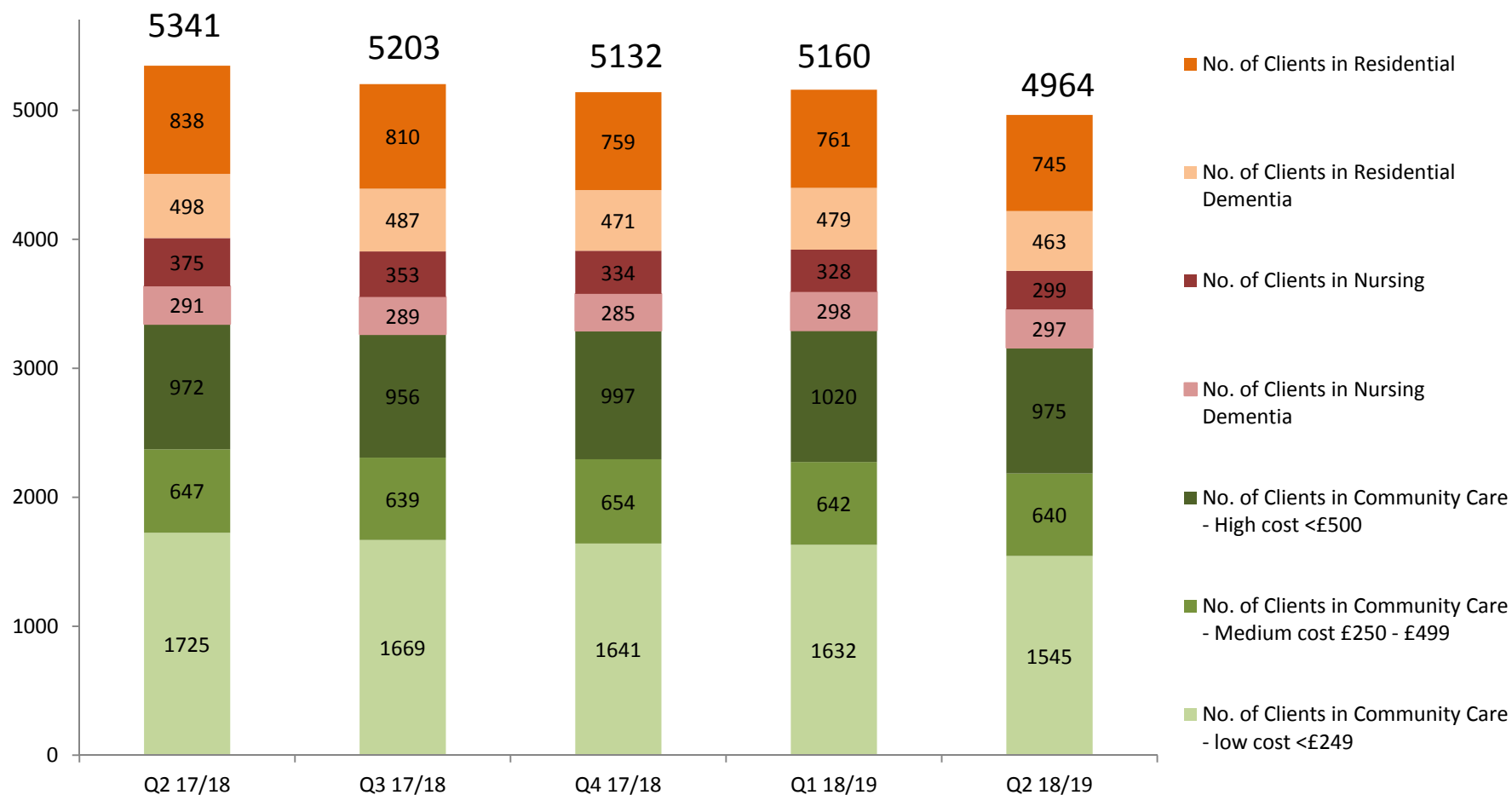
■ % of children who have had less than 3 placements in the current period of care

—→ Target-% of children living in the same placement for 2 years or more

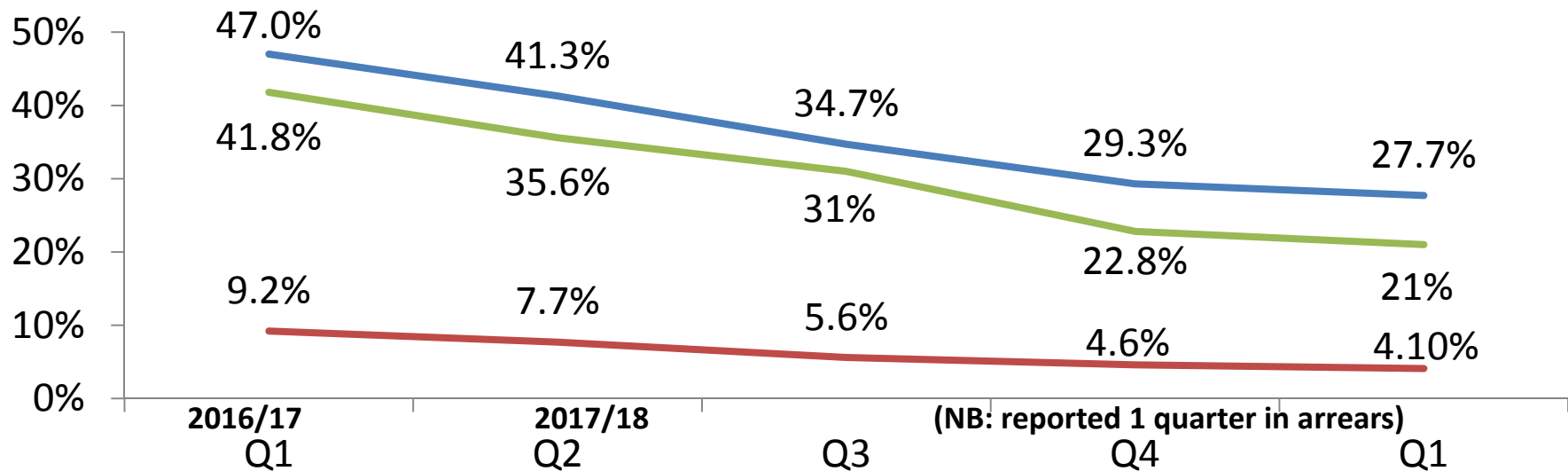
- -→ Target-% of children who have had less than 3 placements in the current period of care

Adults Social Care Snapshot of Support

18-64 (PD clients), 65+ (Older People) & LD (18+) (excludes MH)



Public Health Drug and Alcohol treatment



— Proportion of adult alcohol misusers who have left treatment successfully

— Proportion of all Opiate Users in treatment, who successfully completed treatment and did not represent within 6 months

— Proportion of all Non-Opiate Users in treatment who successfully completed treatment and did not represent within 6 months

Highways

Sustainable urban drainage responses made to Local Planning Authorities within 21 days

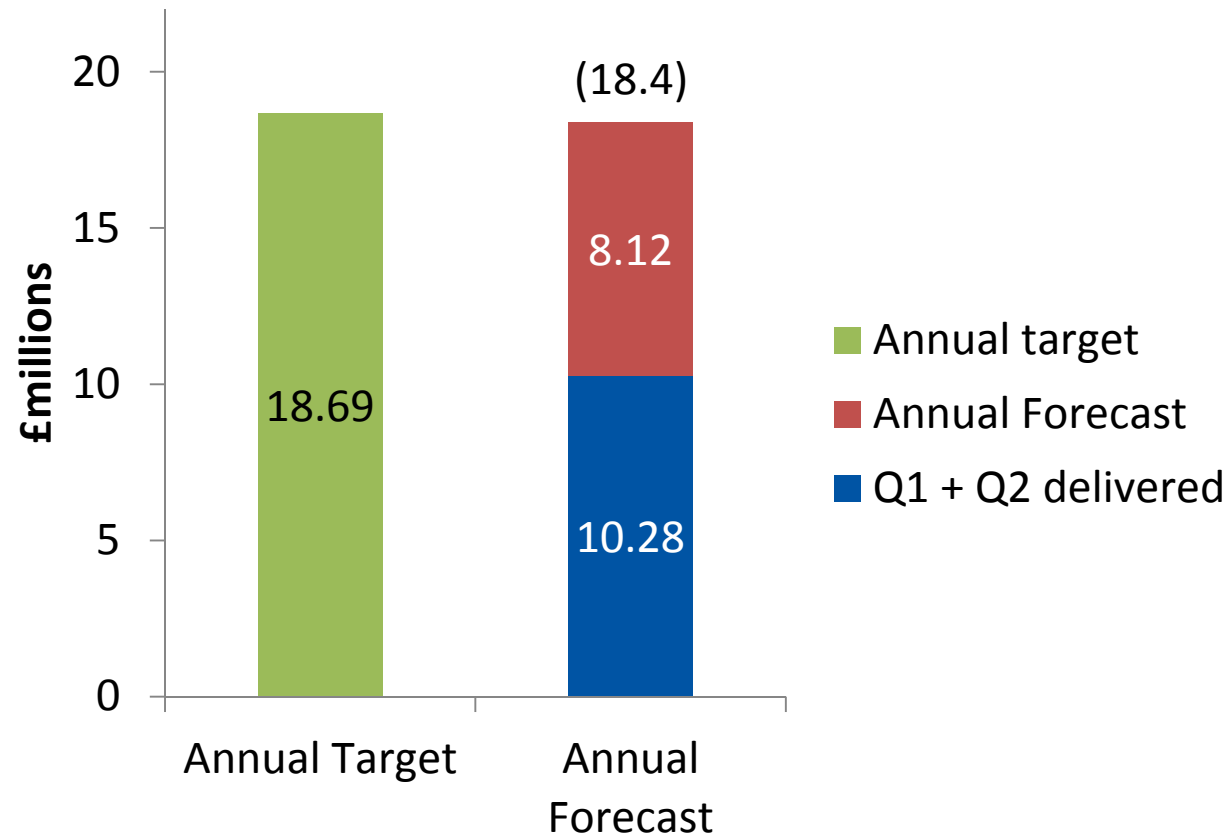
 **100%**

28 day defects repaired on time

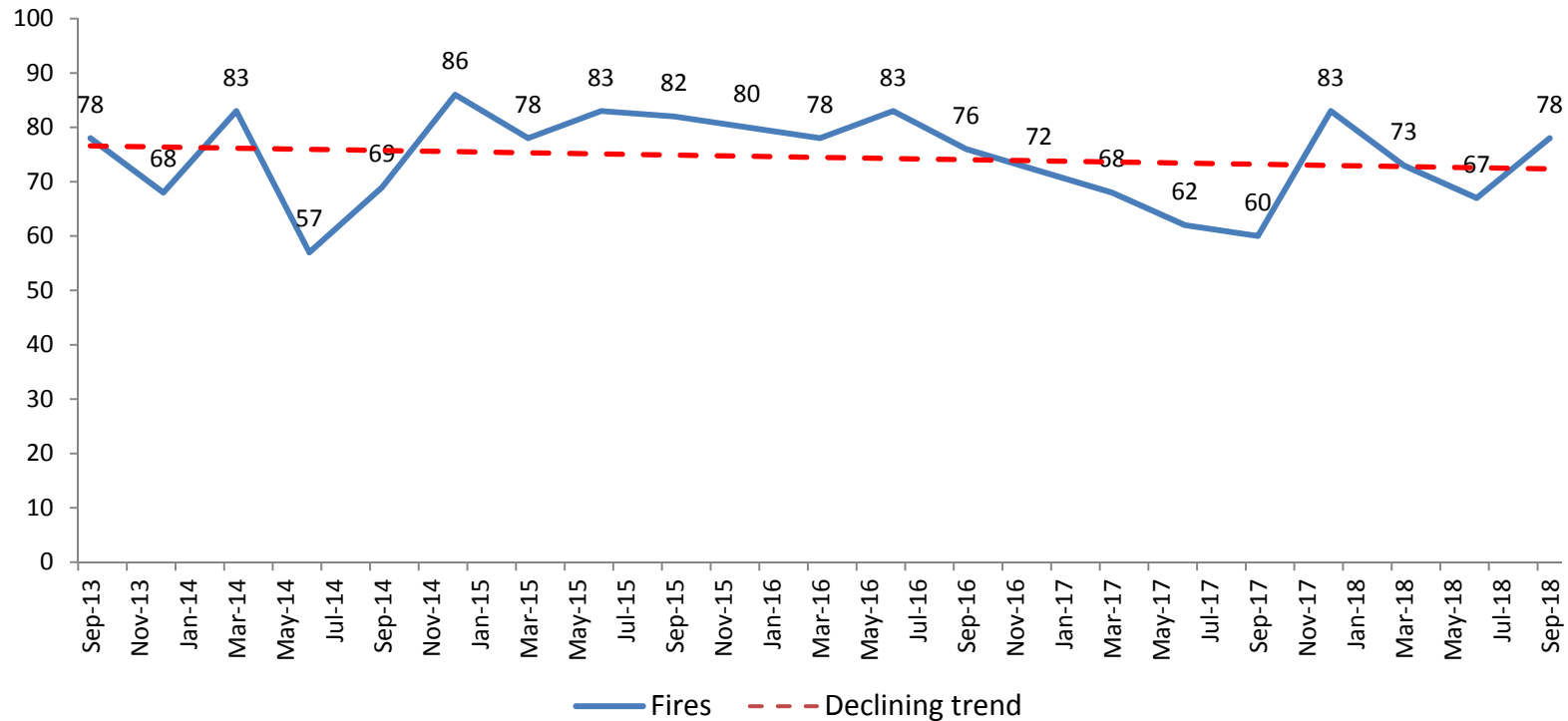
 **98.8%**



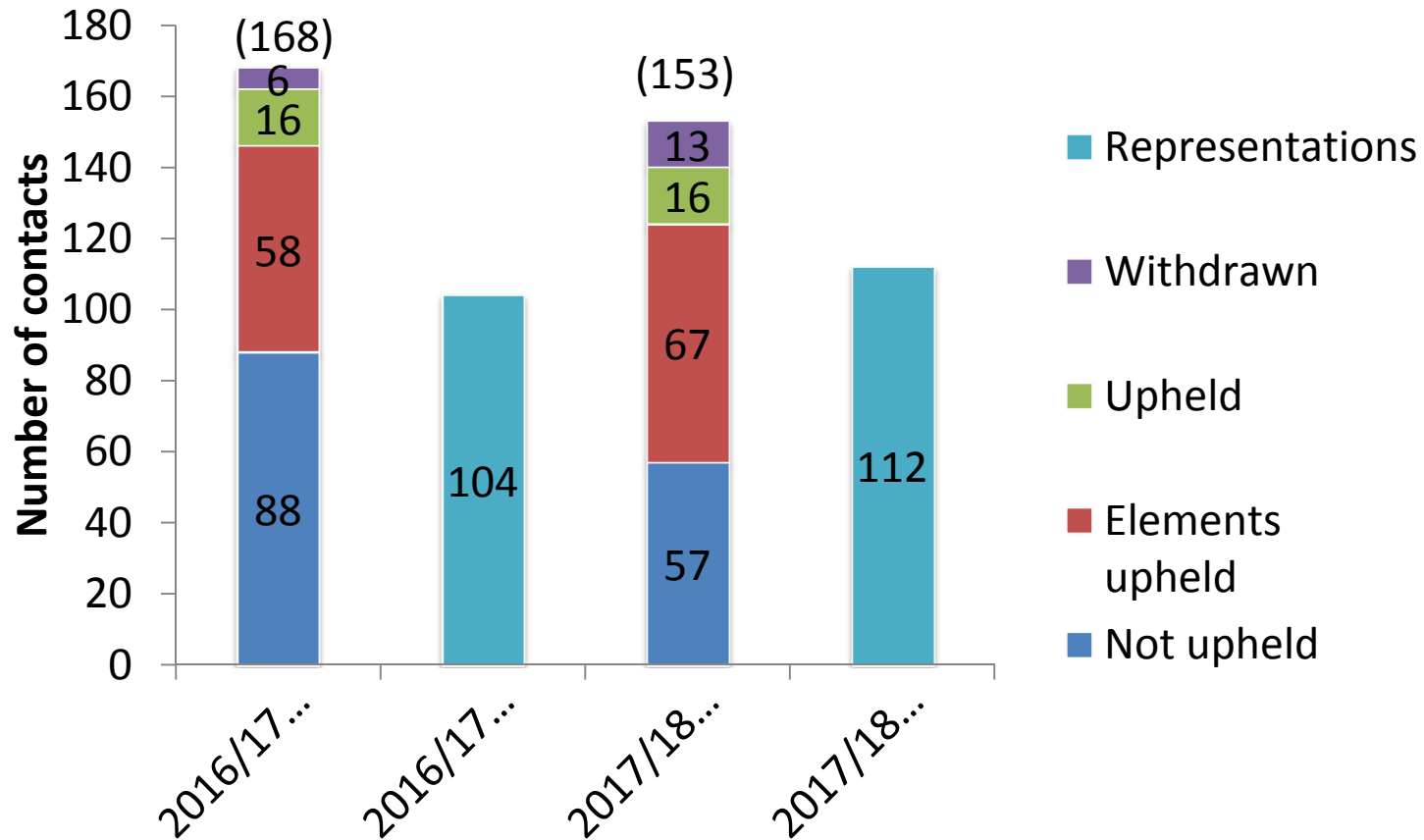
MTC3 Savings



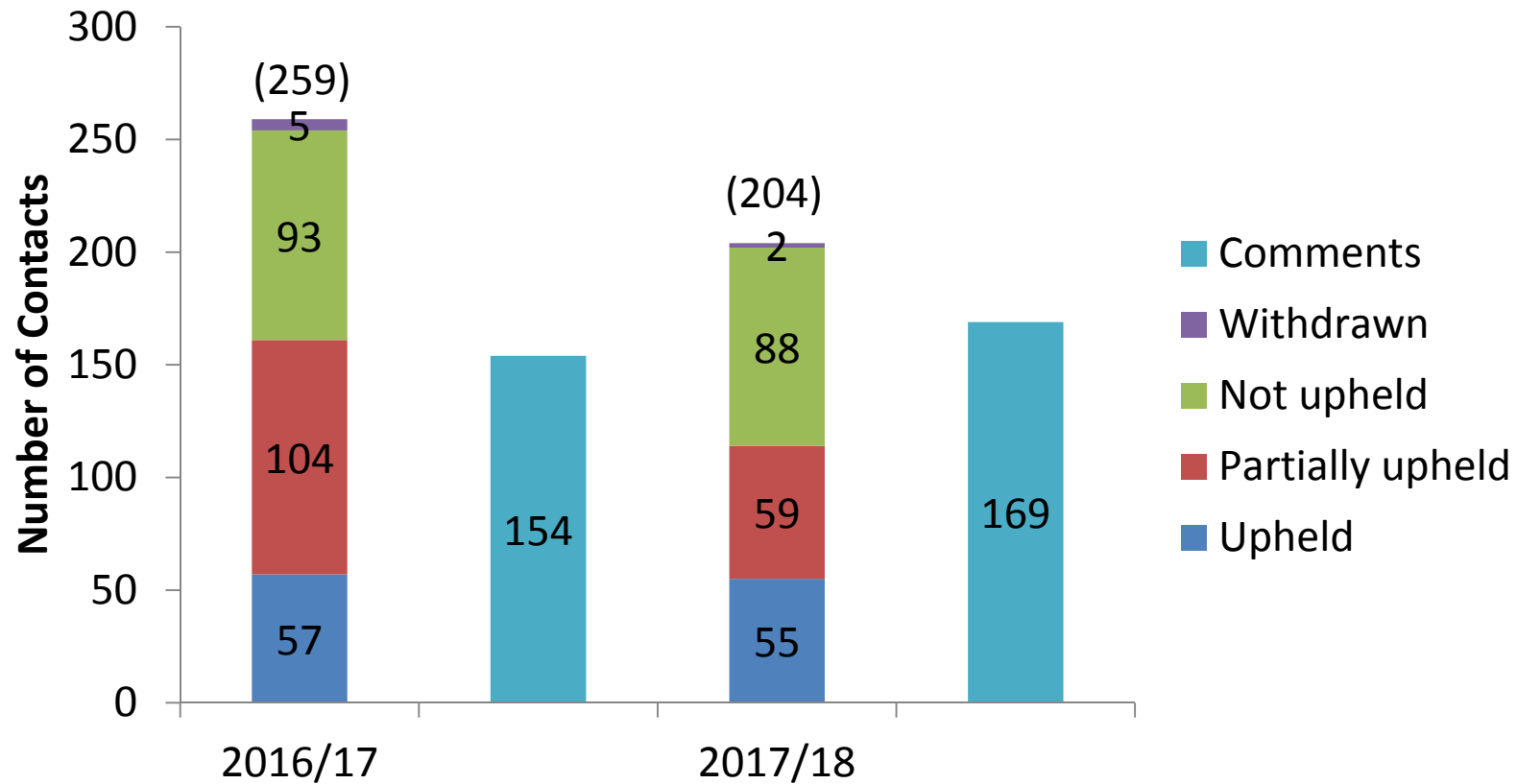
Numbers of accidental dwelling fires



Childrens Social Care complaints and representations received



Adults Social care complaints and comments



Corporate complaints

