

Leading the response to the climate emergency

Gloucestershire's Climate Change Strategy

Part 1- December 2019



A strategy for Gloucestershire

Vision

By 2050 we will create a carbon neutral county that provides quality of life now and for future generations, having improved the quality of our natural environment. By 2030 we will have reduced our carbon emissions by 80%.

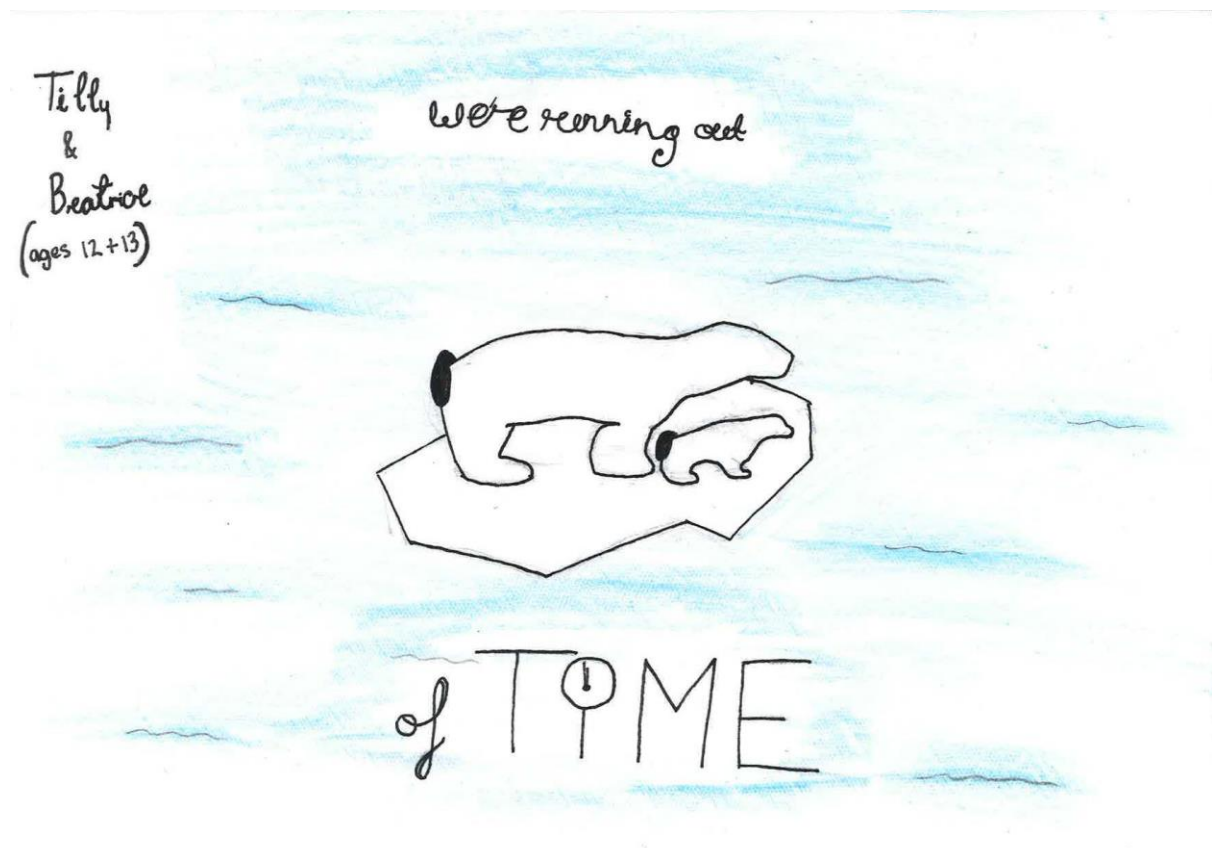
Context

Gloucestershire can expect hotter drier summers, warmer wetter winters and more extreme weather events. For at least 14 years we as the county council have been working to reduce our contribution to climate change by reducing our carbon emissions ('mitigation') and improving Gloucestershire's resilience to the impacts of a changing climate ('adaptation').

All Gloucestershire councils have now declared a climate emergency. Our declaration in May 2019 included commitments for us to be net zero by 2030, and deliver a carbon neutral county by 2050, working with partners to deliver an 80% reduction by 2030.

In May 2019, Parliament declared a climate emergency and government amended the Climate Change Act 2008 for the UK to be carbon neutral by 2050, with an interim target of a 57% reduction in carbon emissions by 2030.

We have developed this strategy following extensive consultation and engagement using the outcomes from the Climate Change Summit in May, consideration by Environment Scrutiny Committee, Gloucestershire Air Quality & Health Partnership, Gloucestershire Economic Growth Joint Committee, the new Gloucestershire Youth Climate Panel and the public consultation over the summer.



Gloucestershire's climate change timeline



The challenge for Gloucestershire

Figure 1 illustrates Gloucestershire’s carbon emissions reduction commitment to 2050 compared to the national target under the Climate Change Act 2008.

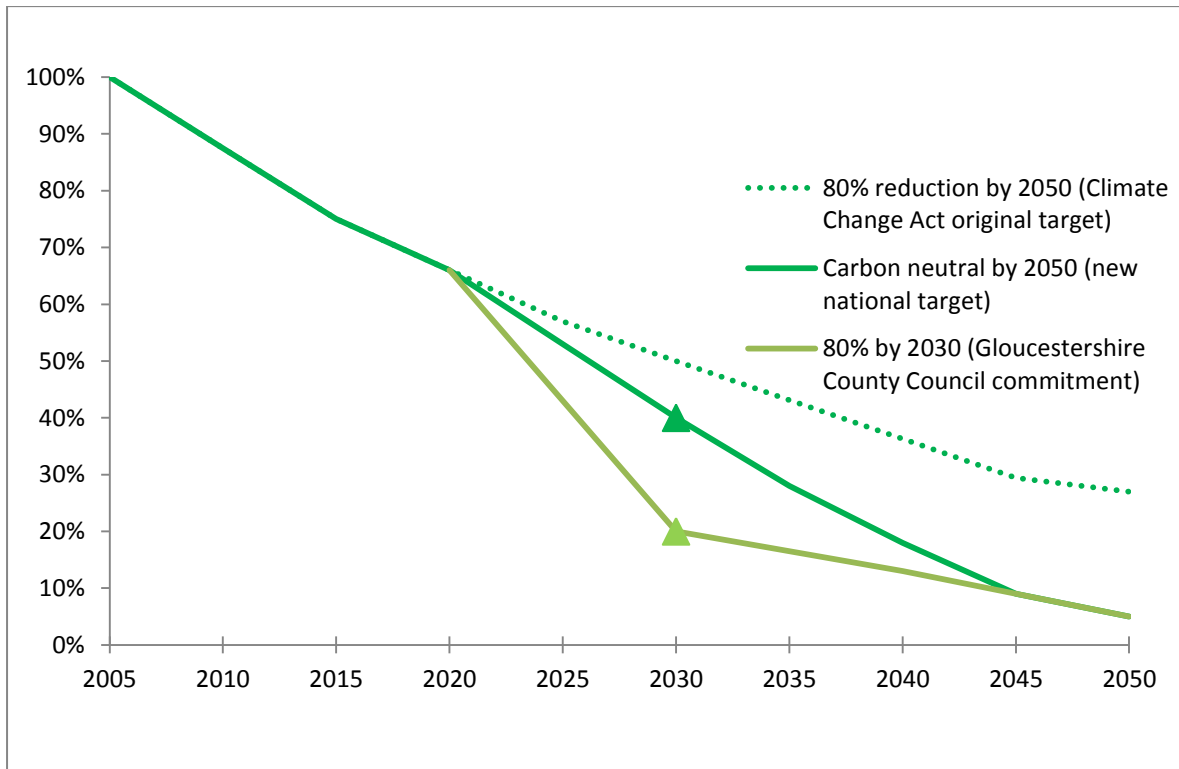


Figure 1: Carbon Emissions Reduction for Gloucestershire to 2050

Figure 2 shows that Gloucestershire’s emissions¹ are similar by sector – transport, domestic and Industry and Commercial.

Where does Gloucestershire’s carbon come from?

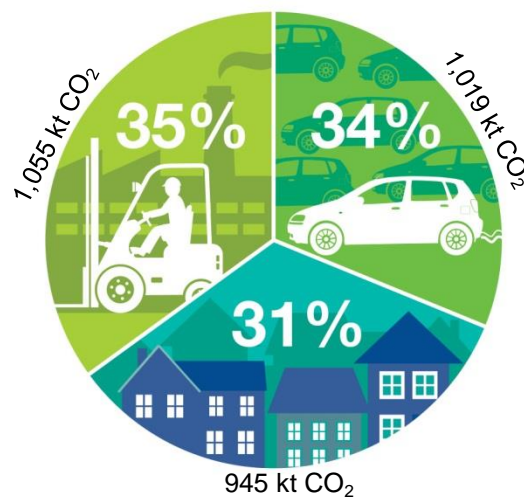


Figure 2: Carbon emissions in 2017

¹ Department for Business, Energy and Industrial Strategy (2019), [Updated energy and emissions projections: 2017 – Local Authority CO₂ emissions estimates within the scope of influence of Local Authorities 2005-2017 \(kt CO₂\) - Subset dataset \(Excludes large industrial sites, railways, motorways and land-use\)](#)

Making it happen – what Gloucestershire County Council will do

As well as developing the climate change strategy we have set up the Gloucestershire Youth Climate Panel and carried out a public consultation.

The consultation demonstrated that there is a lot of concern about climate change amongst both residents and businesses: 84% of residents and 88% of businesses from the telephone survey, and 97% of online responses, said that they were concerned about the impact of climate change (either a lot or a little).

We have also recently exceeded our 2020/21 carbon reduction target: corporate emissions for 2019/20 show a 70% reduction on the 2006/07 baseline, exceeding the reduction target by 10%, 2 years early.

This strategy is not intended to set out in detail how the changes will be brought about, but to highlight the level of change required and in broad terms what needs to happen.

We will take this proposed overall approach for the county to our Leadership Gloucestershire² and other partners, for agreement on how we will work together to bring about a co-ordinated approach in response to the climate emergency.

Developing a challenging action plan

We have sought to respond urgently to the climate emergency and ensure resources are made available to deliver this change. We have proposed an immediate action plan for delivery by April 2020. Medium and long term measures will be implemented as part of a five year rolling programme which will be reviewed and updated annually.

Actions by April

We are making an immediate commitment to ten key actions to achieve by April 2020.

Action	By who	Resource needed	Lead organisation
1. Agree with Leadership Gloucestershire and other partners how we will work together to bring about a co-ordinated approach in response to the climate emergency	Gloucestershire County Council (GCC)	Staff time	GCC
2. Million Trees Challenge – commit to planting a million trees by 2030	GCC, Gloucestershire Wildlife Trust and The Woodland Trust	Public, private and third sector resources	GCC
3. Establish £1m ‘Action Fund’ to incentivise carbon reduction and air quality improvements	GCC	£1million and staff time	GCC
4. £1m energy efficiency invest to save loan fund	GCC to promote to public sector partners	£1million and staff time. £250k to be committed by April.	GCC

² [Leadership Gloucestershire](#), chaired by the county council, brings together public sector organisations that allocate and spend significant resources in Gloucestershire. Its role is to provide vision, leadership and strategic direction in areas where it is vital to work together to meet the needs of the people and communities of Gloucestershire in the most cost effective way.

Action	By who	Resource needed	Lead organisation
5. Buy only 100% renewable electricity	GCC (inc. council schools) who will also encourage partners	Staff time	GCC
6. Generate electricity from the Javelin Park Energy from Waste facility to power around 25,000 homes a year	GCC	Existing resources	GCC
7. Host and support Gloucestershire Youth Climate Panel	Leadership Gloucestershire	Staff time and Panel expenses	GCC
8. Review the Local Transport Plan (LTP) in view of the climate change emergency and consult on the revised LTP in January 2020 (including policies for all transport modes: public & community transport; cycle; freight; highways; rail; walk)	GCC	Staff time	GCC
9. Tender a contract to deliver over 200 new electric vehicle charging points by 2023, as part of a county-wide Electric Vehicle (EV) Strategy	GCC with district councils	Within existing EV Infrastructure budget	GCC
10. Recruit staff to deliver the Strategy	GCC	£70k inc on-costs	GCC

In addition to these immediate actions we will develop and deliver medium and long term measures to reduce carbon emissions. These initial measures, below, will be further developed taking account of feedback, new information and emerging opportunities. More details will be published in annual updates to the five year rolling action plan.

We will...

Action	By who	Resource needed	Lead organisation
11. Work with our partners to ensure that all new public buildings and residential and commercial developments support the move to zero carbon and improve resilience	Leadership Gloucestershire	To be established	GCC
12. Work with our partners to aim for all new development sites to deliver high quality green infrastructure in line with the 'Building with Nature' standards, developed by Gloucestershire Wildlife Trust.	Leadership Gloucestershire	To be established	GCC
13. Stress test public sector assets and services against climate change	Leadership Gloucestershire	Staff time and specialist support (cost to be established)	GCC

Action	By who	Resource needed	Lead organisation
14. Establish an Expert Advisory Panel and Climate Emergency Response Group	Leadership Gloucestershire	Staff time	GCC
15. Launch a targeted communications campaign	Leadership Gloucestershire	£25k in the first 6 months	GCC
16. Launch an awards programme for projects tackling climate change	Leadership Gloucestershire	Staff time, sponsor(s)	GCC
17. Establish baseline carbon emissions for Gloucestershire	Leadership Gloucestershire	Staff time	GCC
18. Identify the potential for renewable energy generation on public sector land in Gloucestershire and set a 2025 target	GCC with district councils	Initial investment but income generated can fund key services.	GCC and district councils.
19. Investigate the feasibility of District Heating Networks , (Gloucestershire Royal Hospital; The Docks; Javelin Park), to deliver at least one by 2025	GCC with BEIS	BEIS-funded consultant	GCC with BEIS
20. Identify ways to reduce carbon emissions in our highways investment	GCC	Study required to clarify implications.	GCC
21. Look to be an early adopter of innovative commercial energy recovery technology	GCC	To be established	GCC
22. Agree targets and funding for cleaner public and school transport services	GCC	Feasibility study to identify ongoing cost implications	GCC
23. Implement climate change impact assessments into the council's decision making process	GCC	Additional staff time to be quantified	GCC
24. Look into developing a Gloucestershire carbon offsetting scheme	GCC	To be established	GCC
25. Expand Green Staff Travel Plan and develop Clean Fleet Replacement Plan	GCC	£20k study plus GCC Travel Plan Co-ordinator and Fleet Manager	GCC

Themes for action

Our long term strategy is centred around eight key themes

1. Putting climate change at the heart of decision making
2. Buildings – ours, residents, businesses and partners
3. Transport – carbon busting options for all
4. Power – helping everyone convert to green power
5. Waste – reducing and dealing with
6. Influencing others – getting everyone
7. Land use
8. Campaigning

What we will do...

1. Put climate change at the heart of decision making

- Develop a joint live 5-year rolling action plan to **reduce emissions and improve resilience**, in consultation with partners and other key organisations and interest groups, building on the work we have all done to date. We will **report progress** to our Environment Scrutiny Committee, Gloucestershire Youth Climate Panel, Leadership Gloucestershire, government and online.
- **Be accountable**, setting targets and outcomes and publicly reporting on ours and Gloucestershire's performance at least annually online and to government. We will ensure delivery by ongoing monitoring of the live 5-year rolling action plan that will provide the detail as to how we will continually measure and improve progress to achieving our objectives.
- Put in place effective **governance arrangements** to inform, guide and monitor the development and delivery of the live 5-year rolling action plan, agreeing with **Leadership Gloucestershire and other partners** how we will work together to bring about a co-ordinated approach, including establishing an independent expert advisory panel, in response to the climate emergency.
- **Support our Leadership Gloucestershire partners** to reduce their carbon footprint within their corporate strategies.
- As a **significant procurer of goods and services**, we will consider our contracts going forward to oblige all contractors to report their carbon emissions and to place a 'carbon/environmental cost' on competing bids. This will make sure suppliers help to deliver our commitments.

2. Buildings – ours, residents, businesses and partners

- **Reduce our carbon emissions** (buildings, street lighting, fleet, business travel) by 80% by 2030, aiming for 100% ('Net Zero') by 2030 through carbon offsetting.
- We will make our **£1m energy efficiency invest to save fund** ('Salix Revolving Fund') available for use across all Gloucestershire public sector organisations.
- Work with our partners to aim for **all new development sites** to deliver high quality green infrastructure in line with the 'Building with Nature' standards, developed by Gloucestershire Wildlife Trust.
- Continue to work with partners under the **Gloucestershire Warm and Well Partnership** to reduce fuel poverty in the county, and support the energy efficiency retrofit of existing housing.
- Continue to work with partners Gfirst Local Enterprise Partnership (LEP) to implement the **Gloucestershire Sustainable Energy Strategy**

3. Transport – carbon busting options for all

- Review **home-to-school transport** provision seeking to reduce vehicle emissions, helping to minimise air quality impacts.
- As the lead **highways authority** (with connections to public transport) we will help to improve air quality in the six districts, encouraging a significant shift in travel behaviour, reducing car emissions in the county. We will reflect our new commitments in our Local Transport Plan, clearly identifying strategies to reduce carbon emissions. We will take the lead on co-ordinating the growth of electric vehicles and other low carbon transport, and the associated charging infrastructure.

4. Power – helping everyone convert to green power

- **Buy only 100 per cent renewable electricity** for all our buildings, streetlights, signs, signals, bollards and council schools.
- As a significant land and property owner, we will continue efforts to **generate renewable energy on our estate**.

5. Waste – reducing and dealing with

- As lead **waste disposal authority** we will continue to reduce waste to landfill, working with the Joint Waste Partnership and other district councils to improve recycling and food waste collection, using the county’s residual waste to contribute to renewable energy generation, significantly reducing greenhouse gas emissions compared to landfill.

6. Influence others – getting everyone to change

- Work closely with the **new Gloucestershire Youth Climate Panel**, to engage young people aged 16-25 to ensure we have an effective climate change strategy and action plan.
- **Put in place resources** (funding and staffing) to support delivery of the strategy objectives and action plan, including: establishing a Climate Change and Air Quality ‘Action Fund’ to develop and incentivise low carbon actions; using our position to secure additional resources, which we can use to help others to take action.
- **Use our strategic role** as the statutory highways, transport, minerals, public health, flood, education and waste disposal authority to directly and significantly change how we, our partners and the community behave.
- As one of Gloucestershire’s largest employers **we will help staff** to understand how they can play a role day-to-day in reducing emissions, by considering how they commute and travel for business, and at work by minimising waste, water and energy use.

7. Land use

- Develop and implement the ‘**Million Trees Challenge**’; an extensive tree planting programme with public and private landowners across the county, aiming to plant a million trees by 2030 as a significant contribution to Net Zero by 2050.
- Support **Gloucestershire Local Nature Partnership** to maintain and enhance the **quality of our natural environment**, protecting and enhancing biodiversity including in managing our own estate.
- Work with the **agricultural industry** to positively influence a reduction in carbon emissions and aid nature recovery within the county
- As lead **flood authority**, working with the Environment Agency and district councils, we will continue to develop and deliver a programme of works to minimise flood risk and its wider impacts, and advise on major development applications to future-proof their climate resilience. We will advise residents how they can protect their properties against extreme weather events, which are becoming more common due to Global Warming.

8. Campaigning

- Influence residents, businesses, communities, partners and Central Government; including through a **county-wide behaviour change campaign**.
- As **strategic planning authority** (minerals, transport, waste) we will call on Central Government to provide additional powers and resources to support local and national action towards this 2030 target. We will ask for stronger planning powers, to further influence the types of buildings in the county and support the districts in being able to make their changes.

Contact Us

To contact the climate change team or to be added to the circulation list for updates about the strategy, please email glosclimate@gloucestershire.gov.uk

Climate change is
Something we ^{Don't} need in
life to keep us alive.

Hennienne (age 10)

