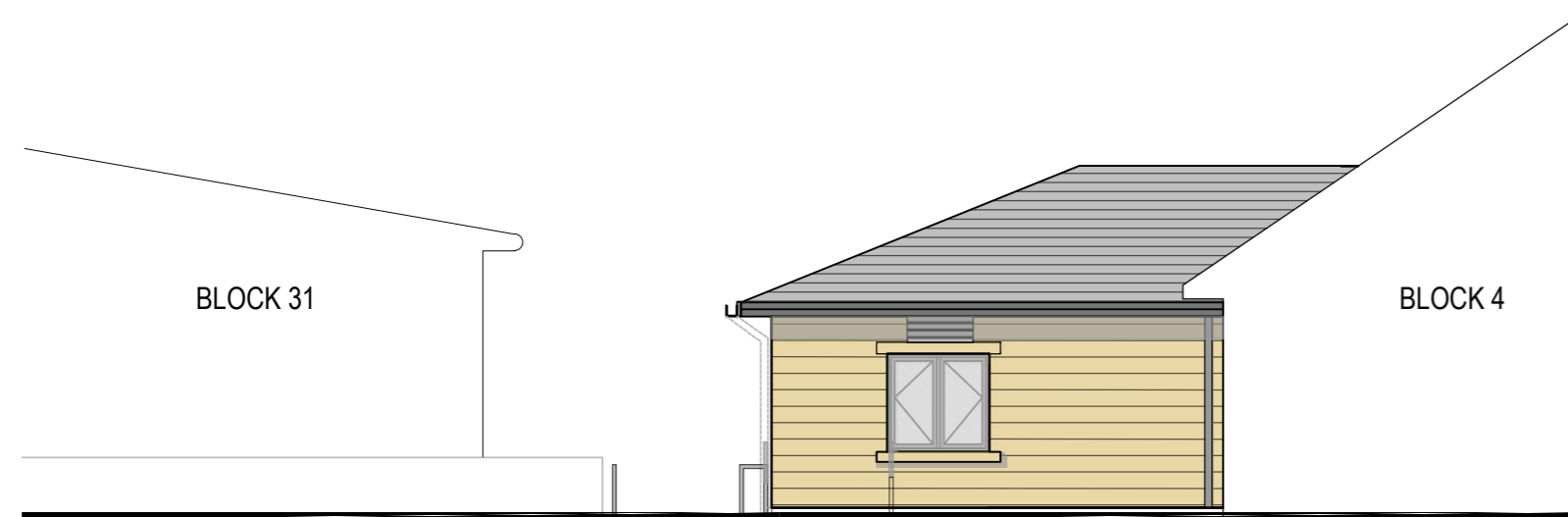
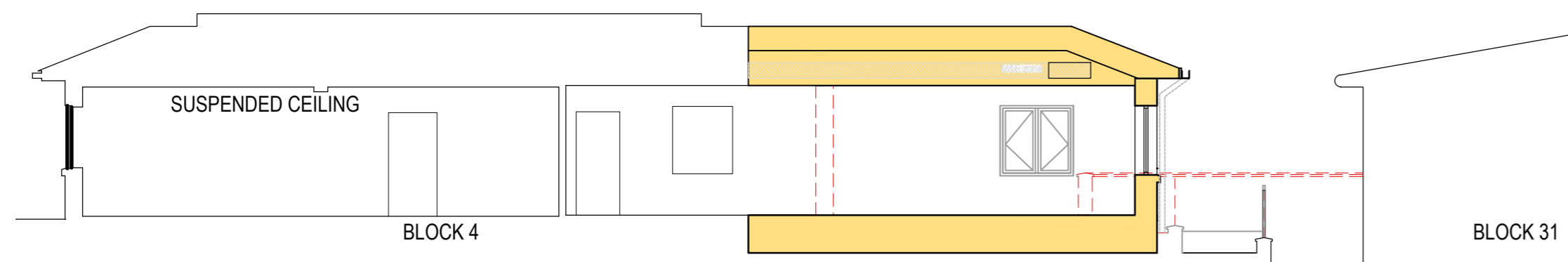


FRONT/NORTH WEST ELEVATION

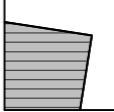
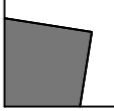
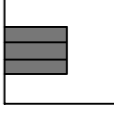
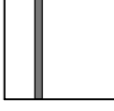
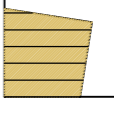



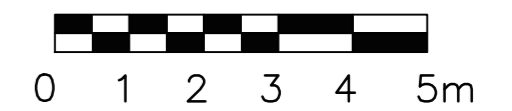
SIDE/SOUTH WEST ELEVATION



SECTION AA

MATERIALS KEY

-  Roof tiles (to match existing)
-  Aluminium Flashing (Dark grey)
-  Fascia (Dark grey).
-  Rainwater Goods (Dark grey).
-  Forticrete Shearstone (split faced) Cotwold Village buff. Random coursed.
-  PPC aluminium Windows (light grey).



C	Drawing updated to planning	09.01.20	AS	DPS
B	Updated to design development	20.12.19	AS	DPS
A	Updated to design development	11.12.19	AS	DPS
REV	DESCRIPTION	DATE	DRN	CKD

SpellerMetcalfe

Robothams Architects
 The Old Library
 12 Church Street
 Warwick, CV34 4AB
 T 01926 493843
 F 01926 495314
 architects@robothams.co.uk
 www.robothams.co.uk



PROJECT TITLE

The Cotswold School
 The Avenue
 Bourton on the Water

DRAWING TITLE

Proposed Science Lab Refurbishment
 Proposed Elevations & Sections

STATUS **Pre-Planning**

SCALE 1:100 SHEET SIZE A2 DRAWN ML

DATE October 2019 CHECKED DPS

DWG NO. 3842-113 REVISION **C**