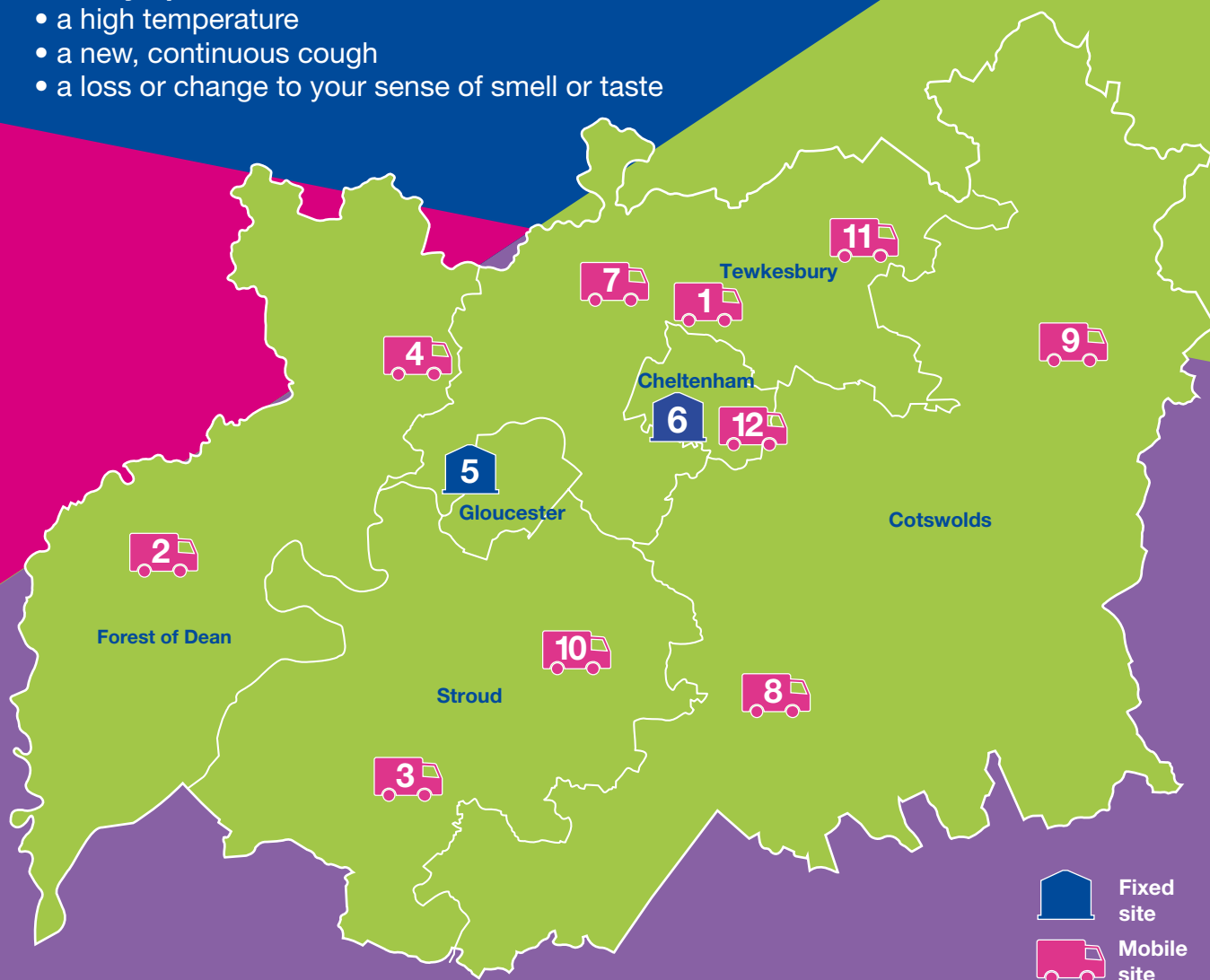


Testing locations for those WITH COVID SYMPTOMS

Main symptoms

- a high temperature
- a new, continuous cough
- a loss or change to your sense of smell or taste



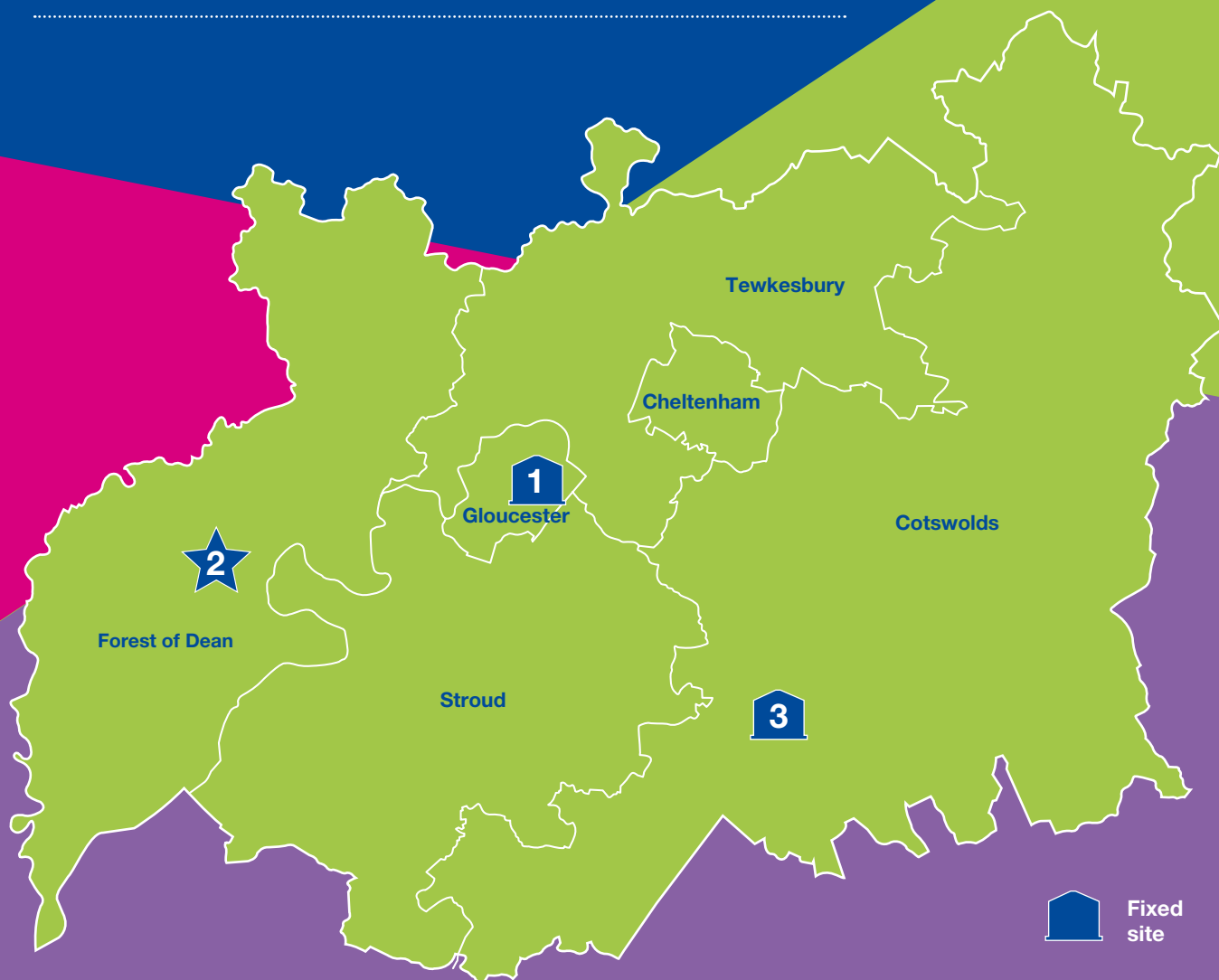
WHEREVER YOU GO FOR YOUR TEST, YOU MUST BOOK AN APPOINTMENT FIRST

To book visit [gov.uk/get-coronavirus-test](https://www.gov.uk/get-coronavirus-test) or by calling **119**

	1 Cheltenham North RFC	GL52 7DG			7 Lower Lode Depot	GL20 5TT	
	2 Cinderford RFC	GL14 2AQ			8 Royal Agricultural University	GL7 6JS	
	3 Dursley Rugby Club	GL11 6AJ			9 Stow RFC	GL54 1JJ	
	4 Hartpury University & Hartpury College	GL19 3BE			10 Stratford Park Leisure Centre	GL5 4AF	
	5 Hempsted Meadows	GL2 5LE			11 Sudeley Castle	GL54 5JD	
	6 High Street Car Park, Cheltenham	GL50 3HQ			12 University of Gloucestershire	GL50 2RH	

Walk only Drive only Walk and drive

Testing locations for those WITHOUT COVID SYMPTOMS



Locations in Tewkesbury and Cheltenham to be confirmed in the near future

WHEREVER YOU GO FOR YOUR TEST, YOU MUST BOOK AN APPOINTMENT FIRST
To book visit gloucestershire.gov.uk/community-testing

1

Friendship Café

GL4 6PR



3

Royal Agricultural University

GL7 6JS



2

Miners Welfare Hall
Opening w/c 8 march

GL14 2JN



Walk only

Walk and drive