

3.1A-K - Documentary Evidence

3.1A - Ordnance Survey 1811 Pen & Ink Drawing, 2 " : 1 mile



3.1B - Bryant 1824



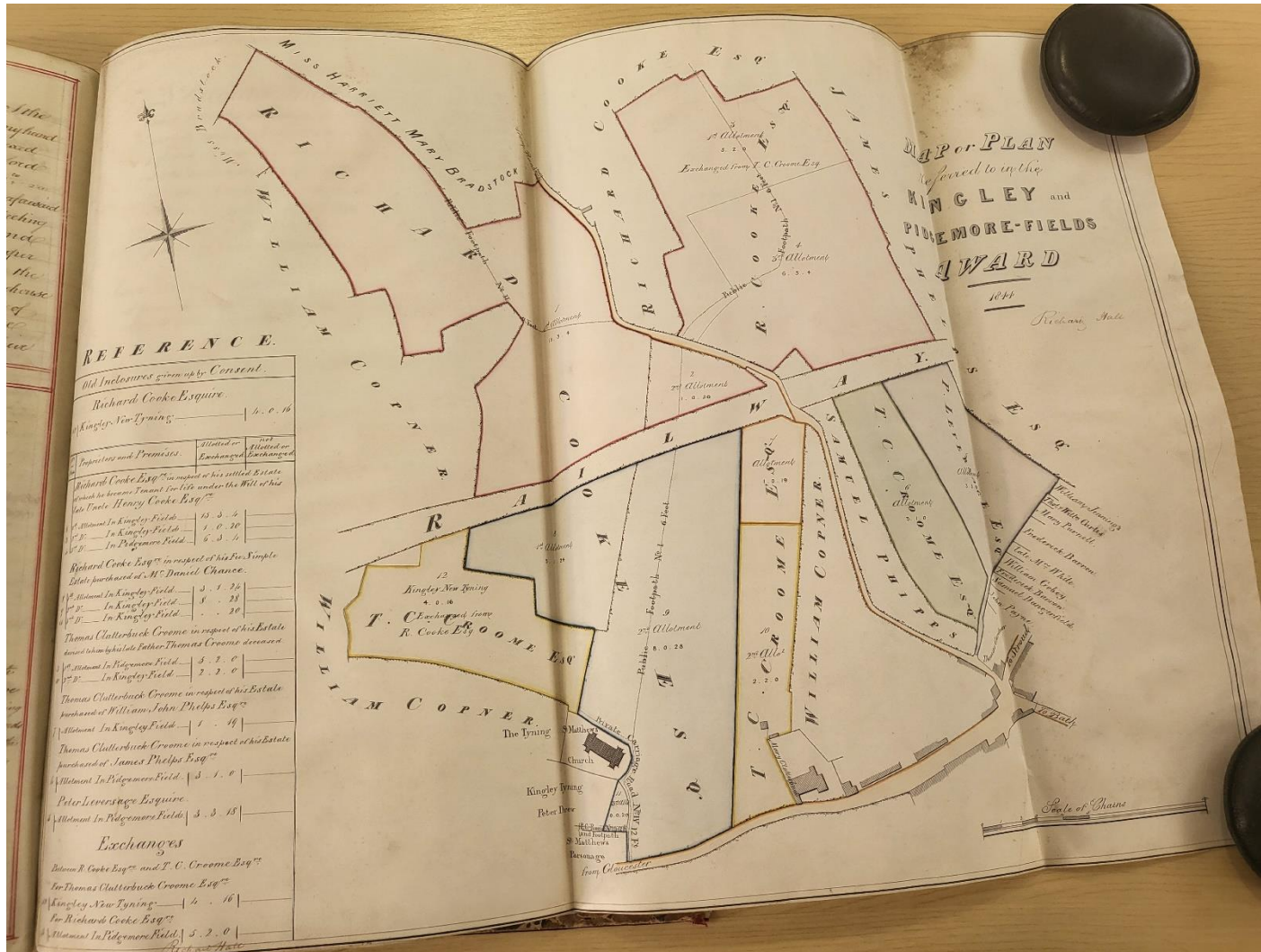
3.1C - Greenwood 1824



3.1D - Ordnance Survey First Edition 1": mile 1830



3.1E - Stonehouse Inclosure Map 1844



3.1G - Ordnance Survey, 25":1mile, published 1885

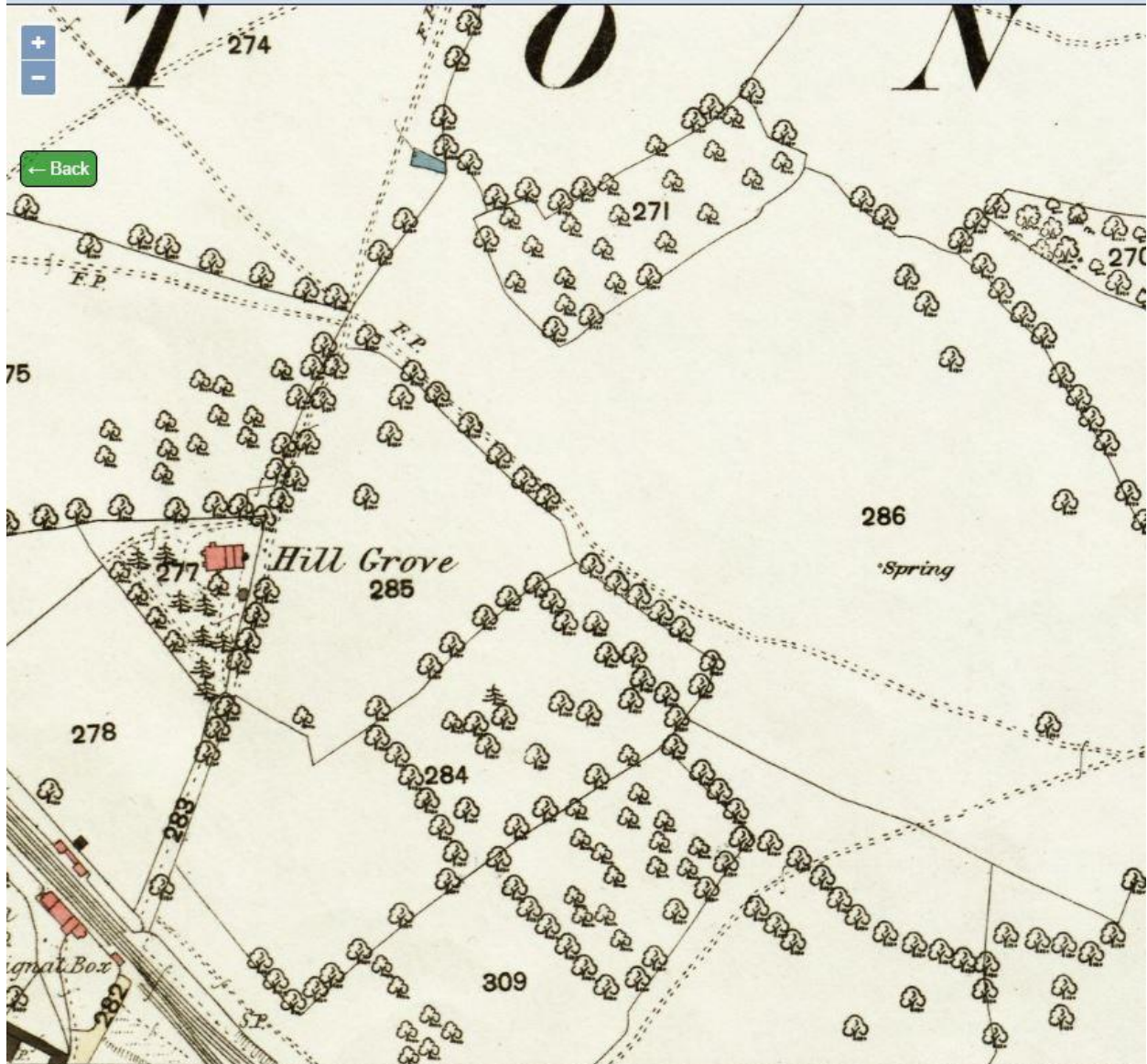


Gloucestershire XLI.14

Surveyed: 1882, Published: 1885

Size: map 64.4 cm x 96.6 cm (25.344 x 38.016 inches), on sheet ca. 76 x 104 cm (ca. 30 x 41 inches)

[Maps home](#) > [Ordnance Survey](#) > [OS 25 inch England and Wales, 1841-1952](#)



3.1H - Ordnance Survey, 25":1mile, published 1902

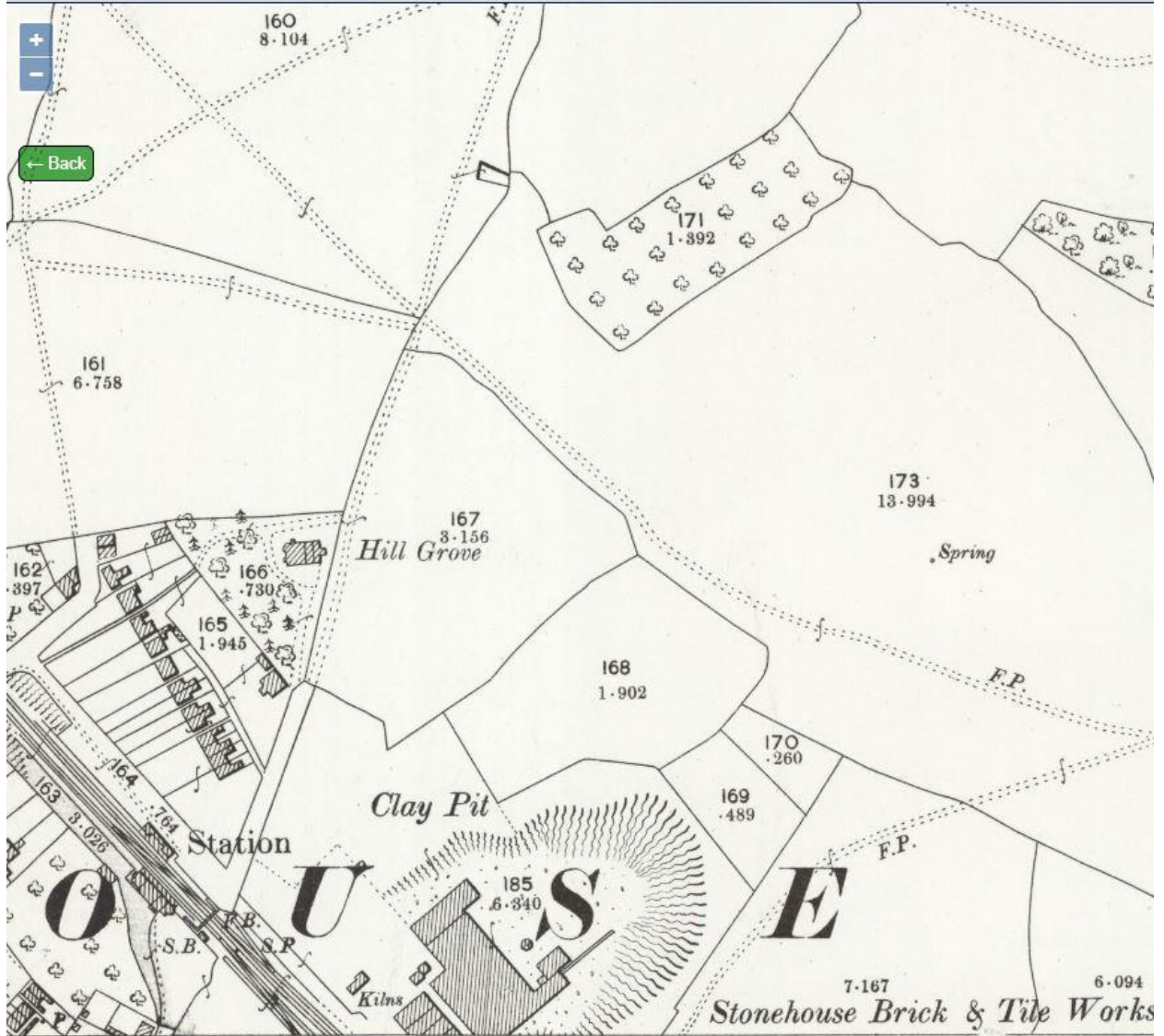


Gloucestershire XLI.14

Revised: 1901, Published: 1902

Size: map 64.4 cm x 96.6 cm (25.344 x 38.016 inches), on sheet ca. 76 x 104 cm (ca. 30 x 41 inches)

[Maps home](#) > [Ordnance Survey](#) > [OS 25 inch England and Wales, 1841-1952](#)



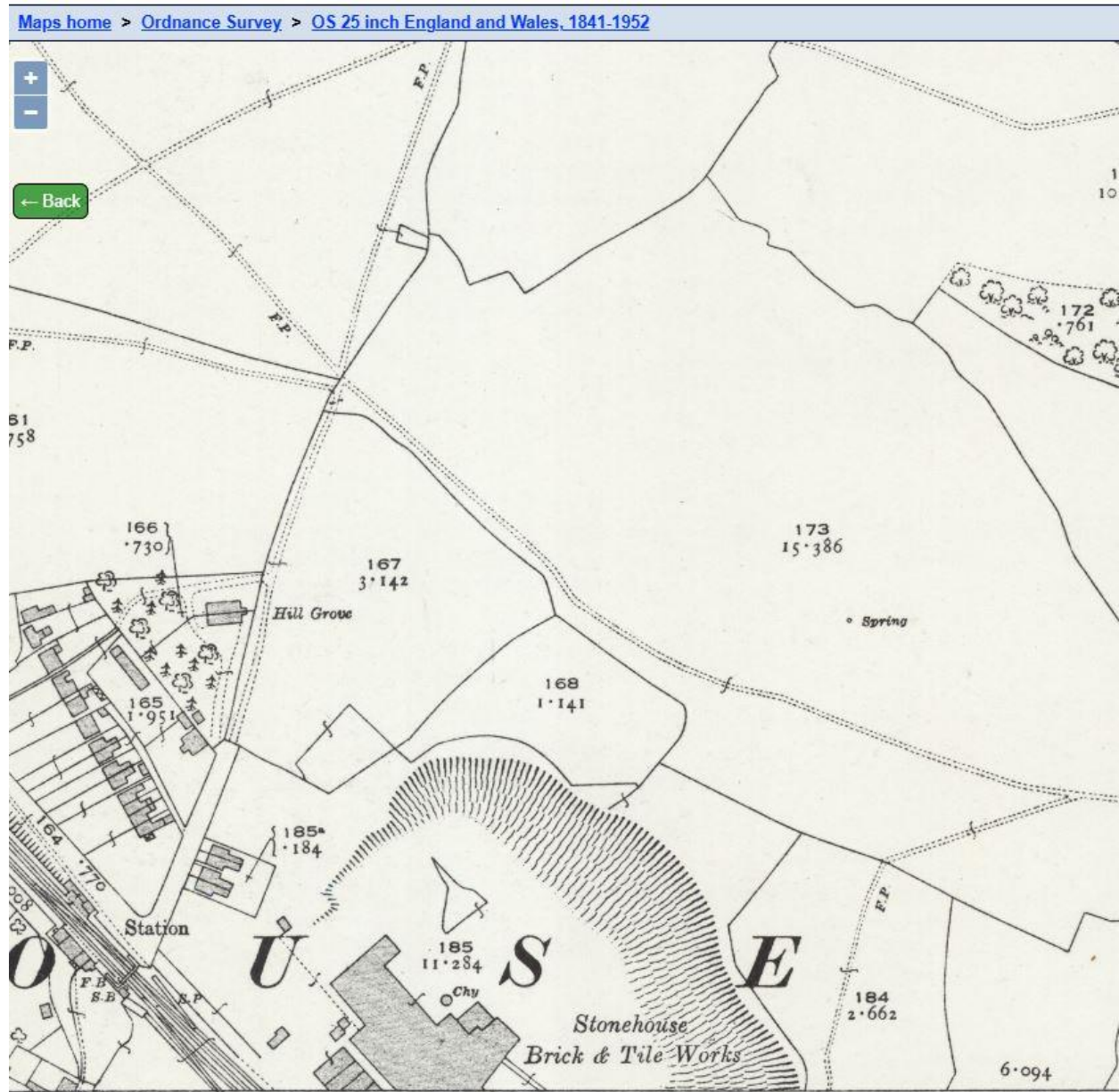
3.1I - Ordnance Survey, 25":1mile, published 1923



Gloucestershire XLI.14

Revised: 1920, Published: 1923

Size: map 64.4 cm x 96.6 cm (25.344 x 38.016 inches), on sheet ca. 76 x 104 cm (ca. 30 x 41 inches)



3.1J - Inland Revenue Finance Act 1910 Map, Sheet 41.4 - Extract



3.1K - Definitive Map extract

3.1K

