



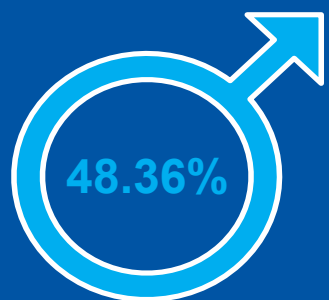
Mid-2024 101,949



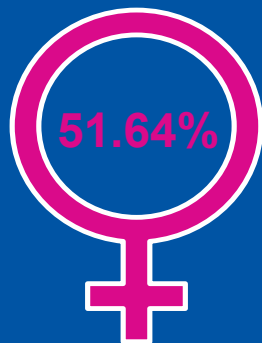
2.41% + 2,403 people

Between mid-2023 and mid-2024
(Mid-2023 99,546)

Sex split



Male

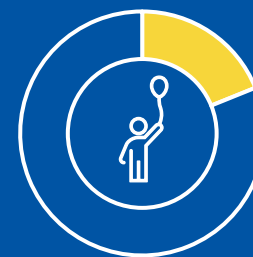


Female

Median age

43.1
years

Broad age groups



0-15
18.89%



16-64
59.15%



65+
21.95%

Components of change



+0.05%
Births - deaths

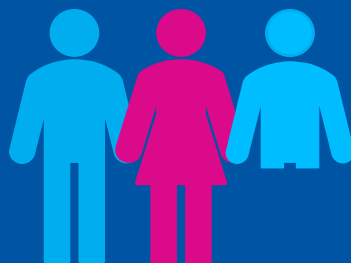


+2.10%
Internal migration



+0.26%
International migration

Population density



246 people per square
kilometre

District comparison mid-2024:

Gloucester: 138,598	↑	1.68%
Stroud: 125,680	↑	0.98%
Cheltenham: 121,739	↑	0.73%
Tewkesbury: 101,949	↑	2.41%
Cotswold: 91,661	↑	0.16%
Forest of Dean: 89,753	↑	0.79%