

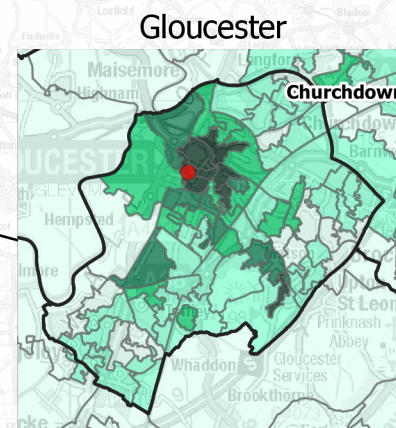
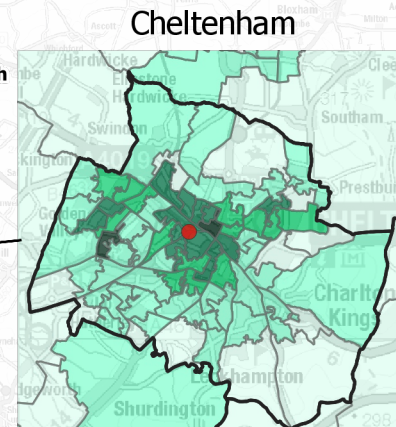
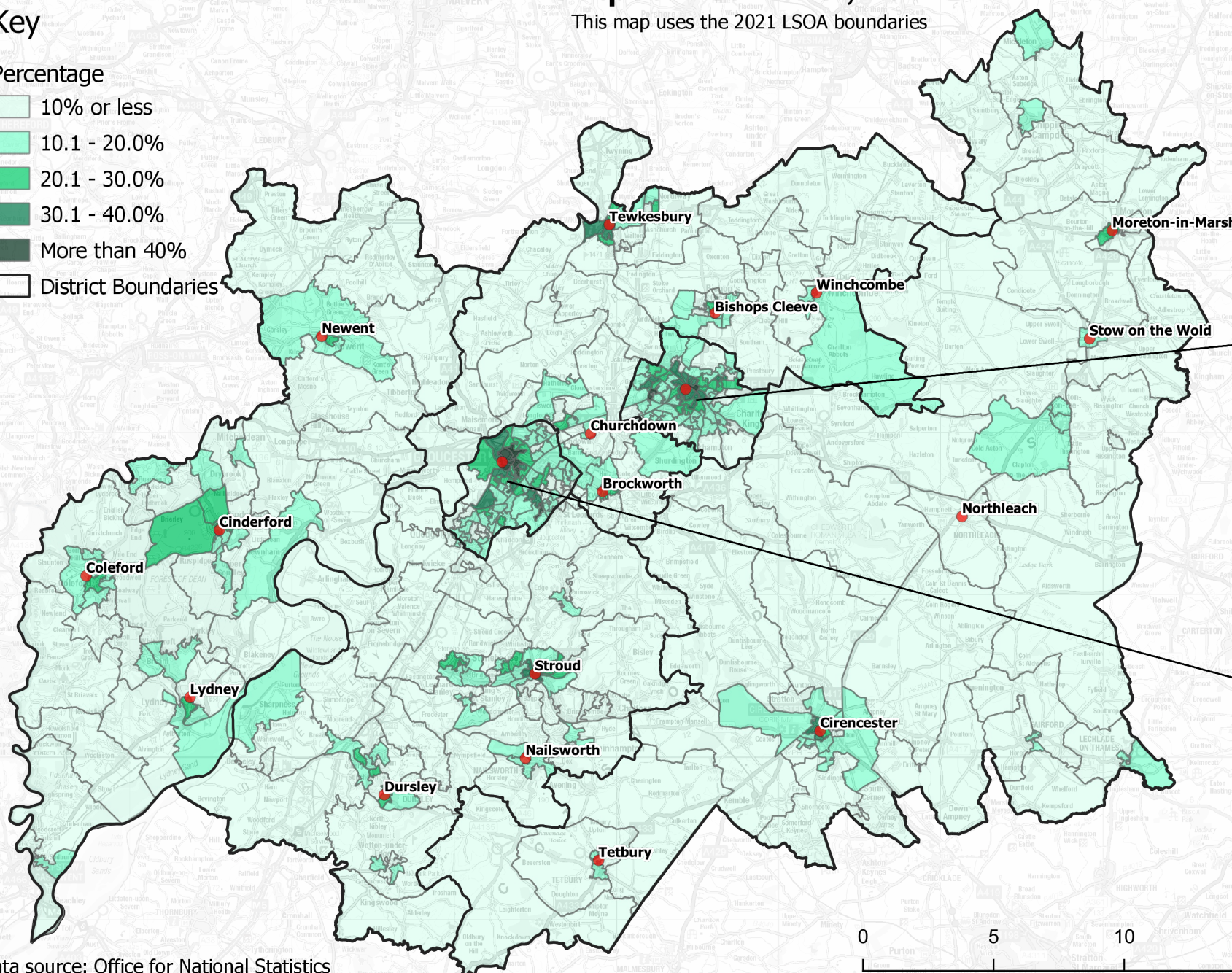
# Percentage of households without access to a car or van at Lower Super Output Area Level, 2021

## Key

### Percentage

- 10% or less
- 10.1 - 20.0%
- 20.1 - 30.0%
- 30.1 - 40.0%
- More than 40%
- District Boundaries

This map uses the 2021 LSOA boundaries



Data source: Office for National Statistics