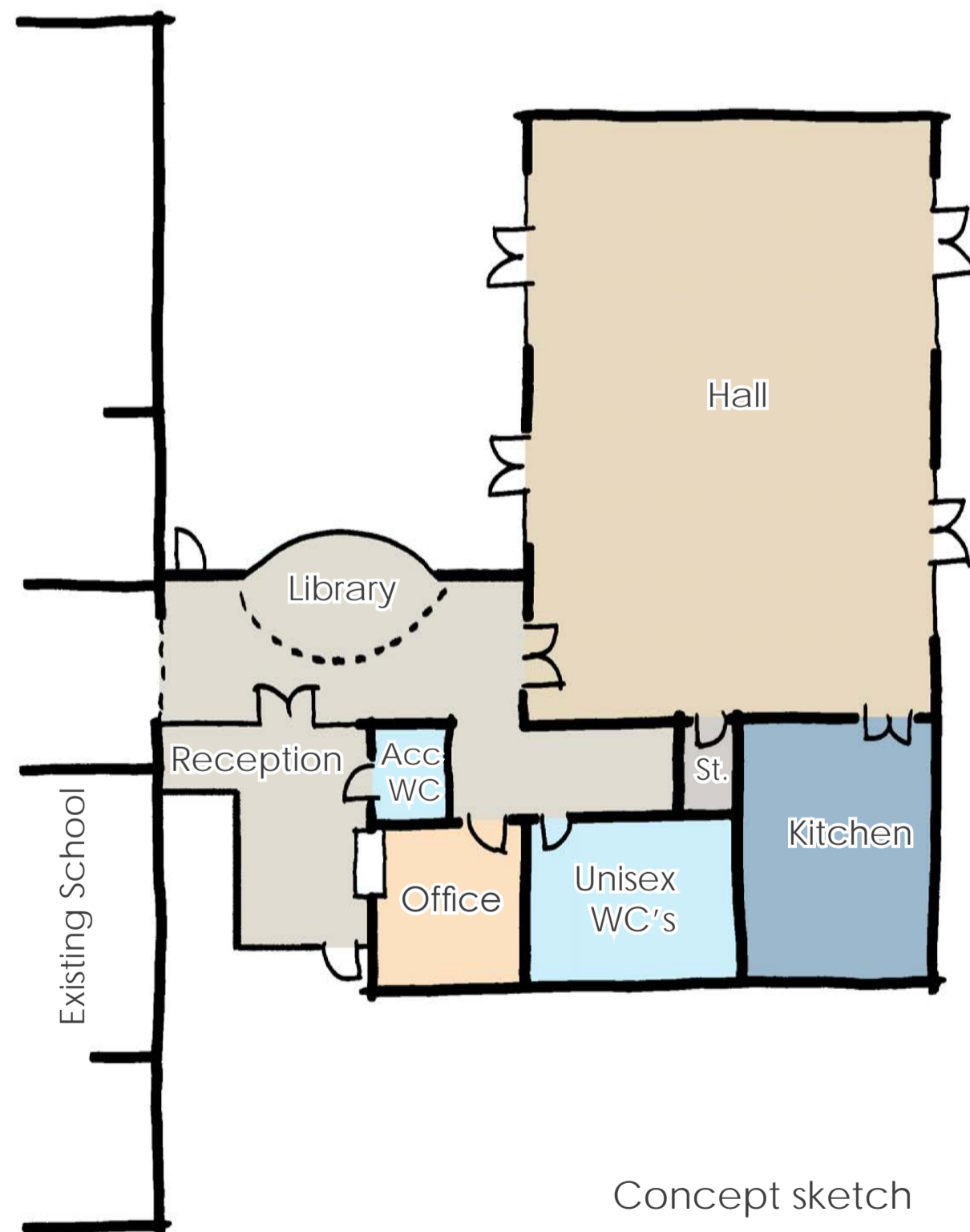


01: A new hall for our School



Current school hall



Concept sketch

Introduction:

Siddington Church of England Primary School has almost doubled in size. Over the last 5 years The school has grown from 52 to nearly 80 pupils on roll.

Whilst this growth in pupil numbers has been accommodated by adding extra classrooms to the existing Victorian buildings, the school hall is no longer large enough to comfortably hold all of our pupils and staff.

The hall is a valuable resource and fulfils many functions as a venue for collective worship, serving and eating lunch for all the children, physical education, music lessons and intervention groups.

It has been a long held ambition of The Corinium Education Trust to provide a new school hall with an additional classroom and remains an objective in the school's development plan.

Working in partnership with Gloucestershire County Council, the Diocese and Bathurst Development Limited, The Corinium Education Trust have found a solution.

Gloucestershire County Council and Bathurst Development Limited have agreed to provide a legacy building as a result of The Steadings Development.

Rather than use temporary buildings while the building work is carried out, this legacy building would act as a temporary school for the new development. Once the new school is built at the Steadings development, then the new building will be converted to our new school hall.

The new hall will give Siddington Church of England Primary School the space that it needs and also provide a library for pupils and an enhanced main office and reception.

The new school hall will:

- Provide a focal point for worship;
- Create capacity for indoor activities such as gymnastics;
- Provide canteen facilities;
- Relieve the pressure on other spaces in the school and reduce the need for more temporary accommodation;
- Allow the old school hall to be refurbished as a new classroom;
- Become a resource for the community.

02: Proposed 3D visualisations



Siddington Church of England Primary School



Views of new school entrance



Siddington Church of England Primary School



03: Proposed 3D visualisations



Proposed new main entrance



View from playing fields toward new hall



View into rear courtyard



View from rear courtyard toward playing fields



04: Access to the site



On-site improvements:

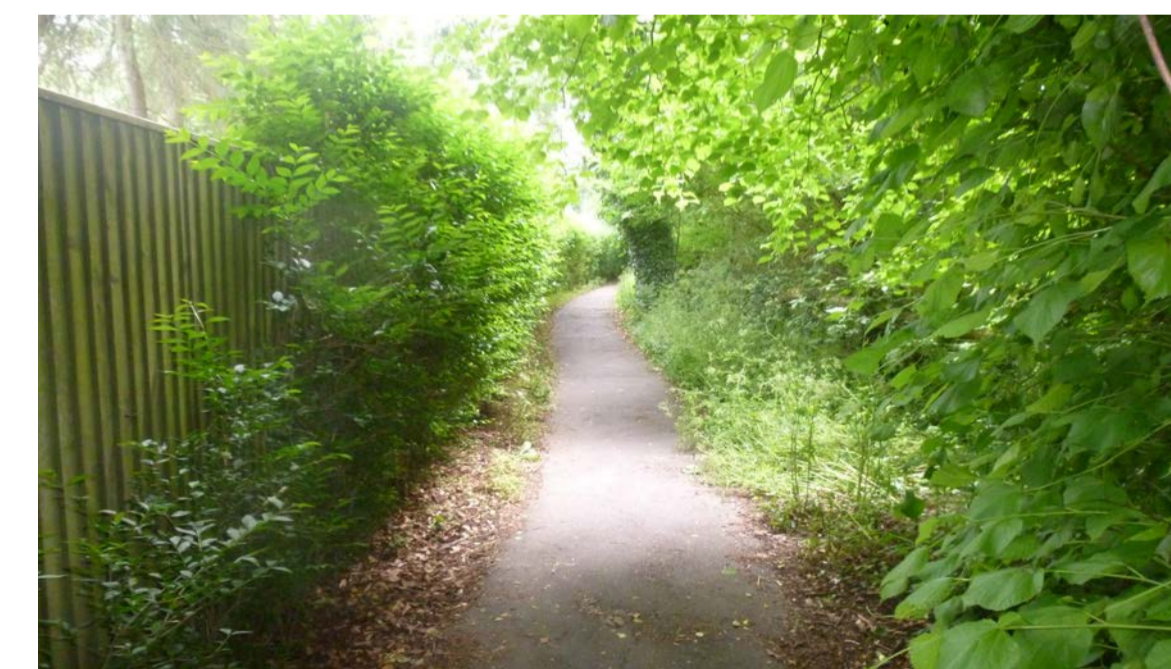
- Additional staff parking will be provided on hardstanding area. This will reduce demand for staff off-site parking and provide a safer environment around the main school building.
- Access route for existing pupils and staff will be improved with clearly marked route through car park.
- These layout improvements will therefore provide the school with additional parking whilst enhancing the access on foot to the site for existing and future pupils.

Resolving access issues:

- Gloucestershire County Council has been engaged early in the process with initial discussions indicating that any additional movements to the site can be adequately accommodated.
- The proposal will build upon the existing successful school travel plan which has introduced a number of successful initiatives such as a 'Walking Bus' that will operate from the new estate.
- Off-site traffic surveys and parking counts were undertaken pre-COVID to consider the existing and future parking demand at the school site taking into account the existing proportion of pupils who walk to school (approximately 16% walk to school whilst 51% park and stride).
- The school already takes an active roll in monitoring the pupils travel to school and is committed to continuing this role.



Siddington Church of England Primary School
'Walking Bus' to school



Connection to Pound Close



Connection to Love Lane

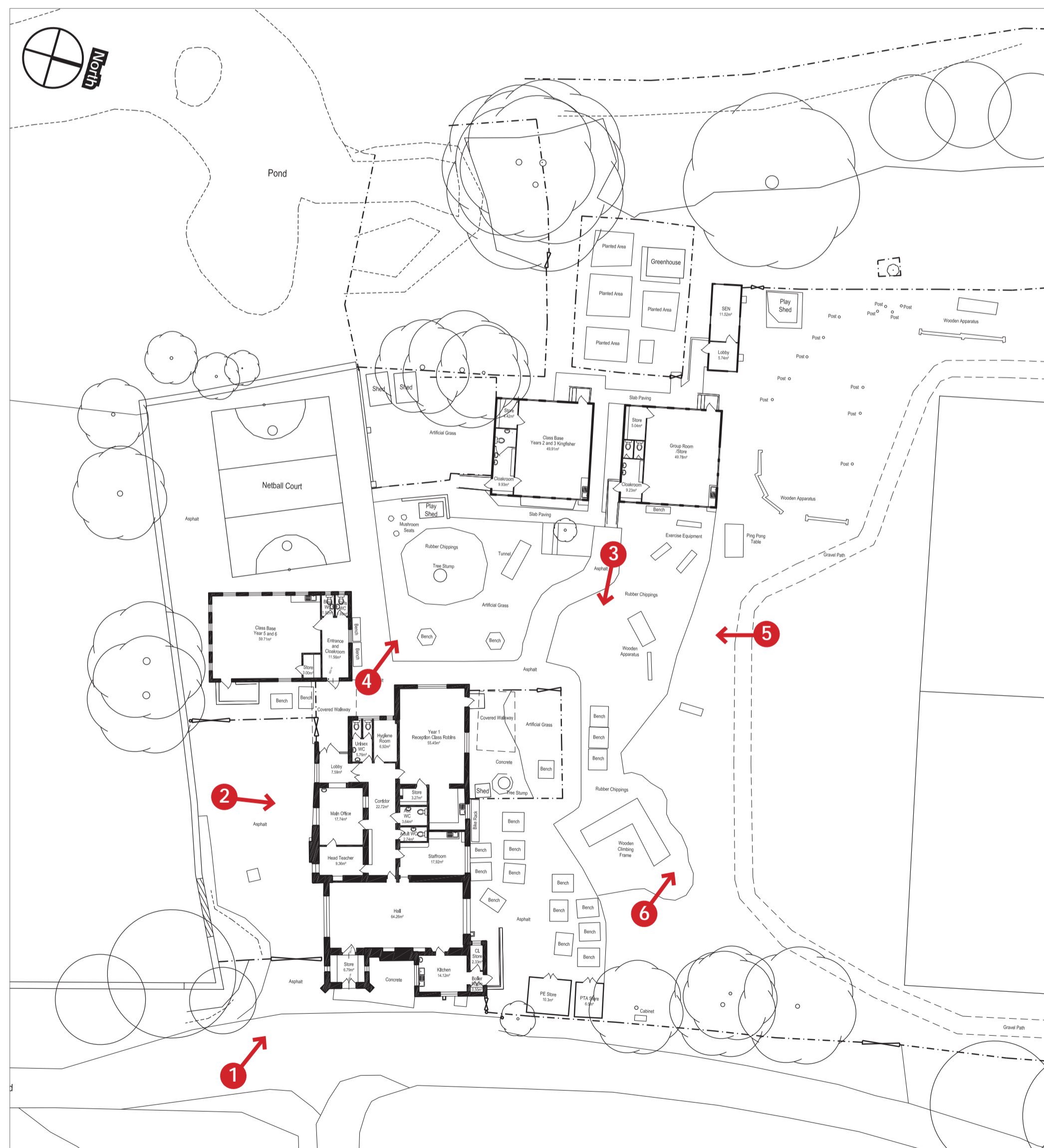


Information has been provided by i-Transport LLP

05: Site location and analysis



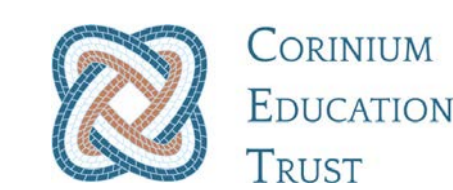
- Key**
- Site boundary
 - Residential properties
 - Existing trees/hedgerows
 - Sensitive boundary
 - ⬅ Site access
 - ➡ Views
 - ☀ Sun path
 - ▲ Listed buildings
 - ➡ Views
 - ☀ Sun path



Existing site plan



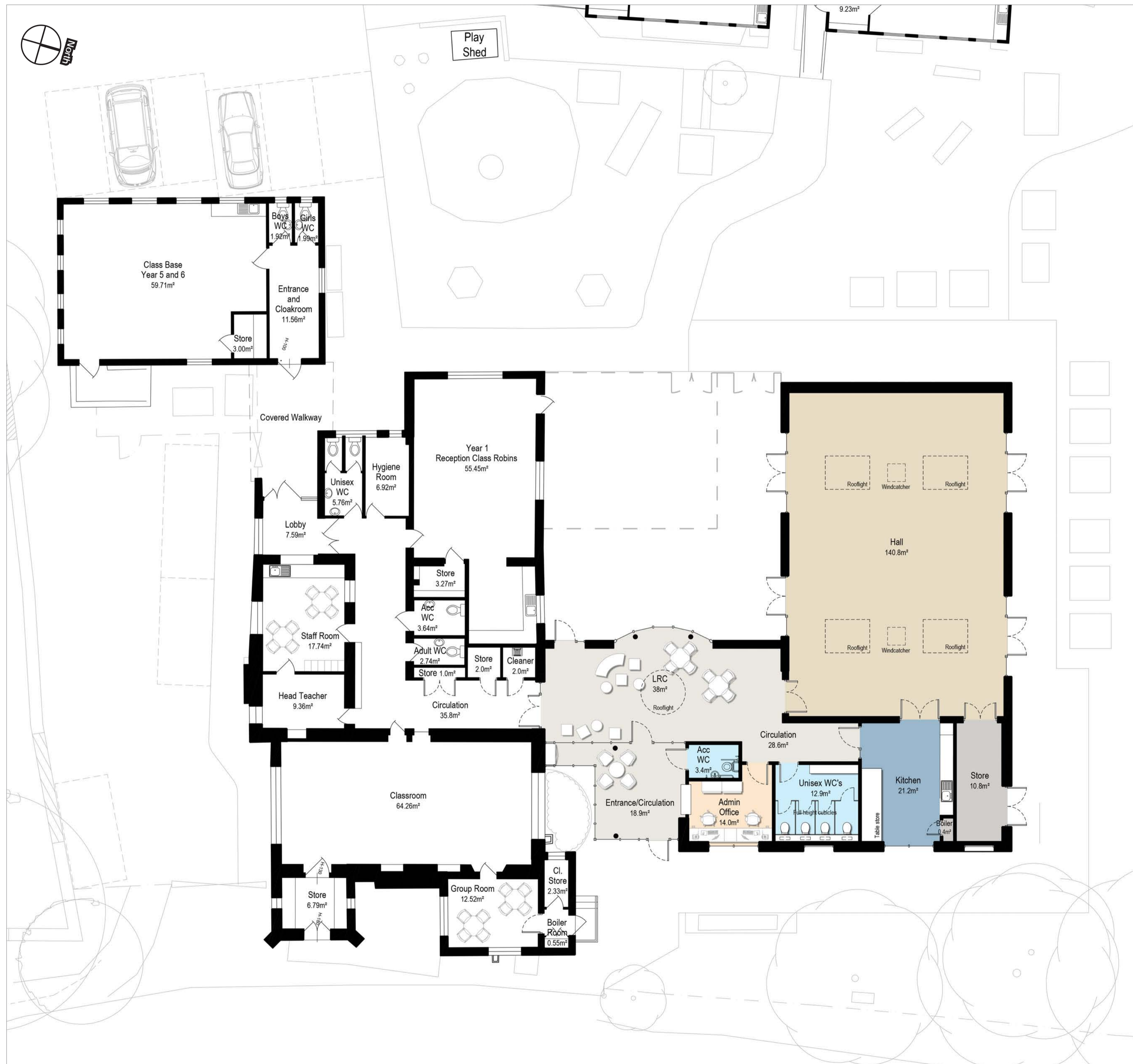
Siddington Church of England Primary School



06: The proposal



07: Proposed floor plan



Proposed ground floor plan

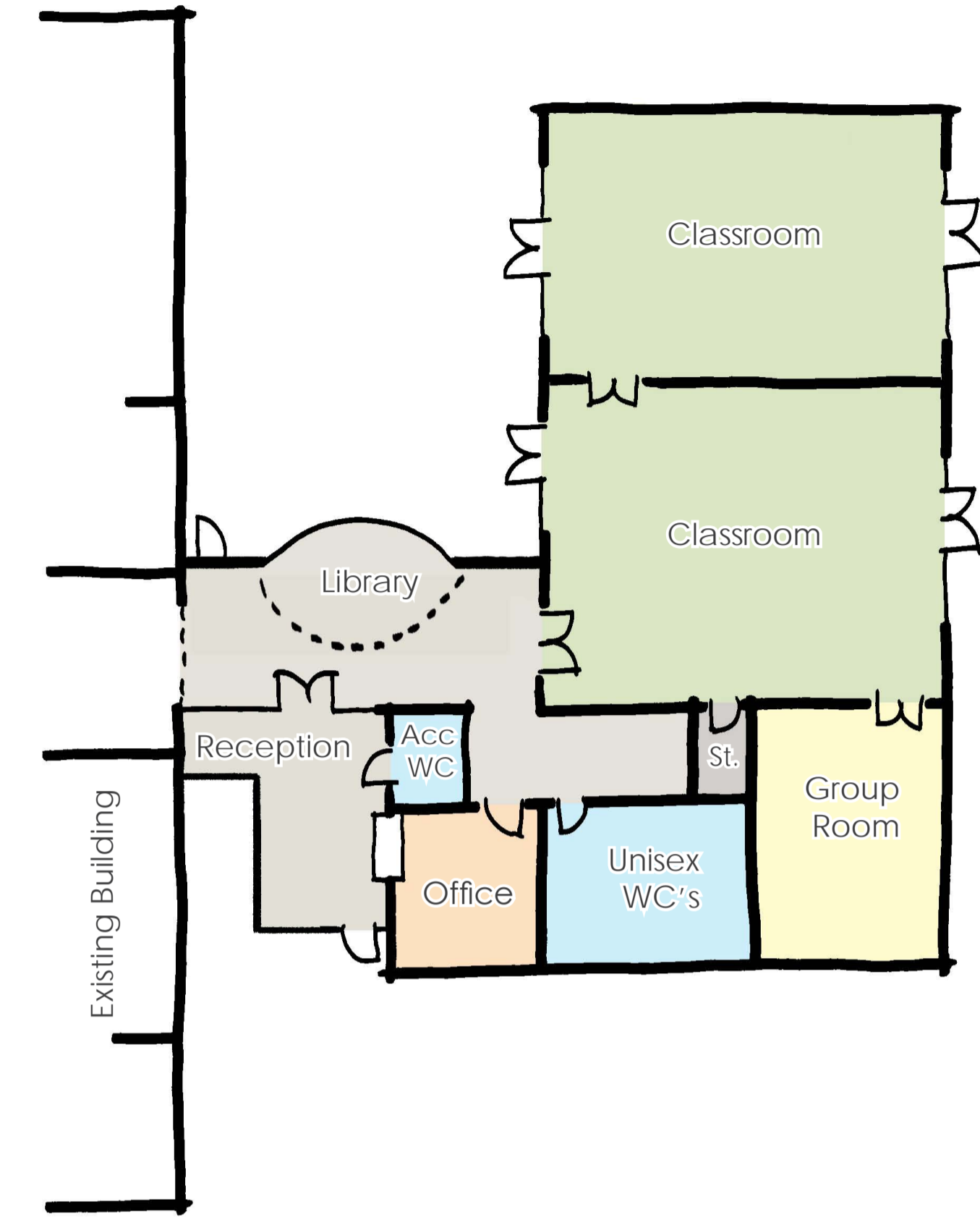


08: A new hall for our School



How we build our Hall:

- The Corinium Education Trust have agreed to collaborate with Bathurst Development Ltd and host a temporary school for two years at Siddington Church of England Primary School. Temporary School hosting will take place for years 2024/25 and 2025/26.
- The temporary accommodation is required to provide Primary School accommodation for families who move into the new housing development during the early stages of The Steadings development.
- The Steadings development will include a new Primary School.
- As soon as the new Primary School is in operation the temporary host school will not be required.
- Gloucestershire County Council and Bathurst Development Ltd have agreed to build permanent accommodation rather than build a modular temporary building to host the school.
- Once the pupils move to the new Primary School at The Steadings, the school 'host' accommodation will be available for the Siddington Church of England Primary School.
- The two new temporary classrooms will be converted into the much-needed new hall and a further room reconfigured to a new catering kitchen. The entrance to the temporary host school and associated library and reception will then provide a new entrance for Siddington Church of England Primary School.
- Siddington Church of England Primary School will obtain their much-needed new Hall and associated facilities with reconfigured and improved external works.



Concept sketch 'Temporary Teaching'

Following this process of public consultation, a planning application to Cotswold District Council will be submitted.

Below is an indicative timeline for the next steps of the design development and planning application process:

Project Timeline

