

Unemployment Bulletin

Issue 16 November 2009

Contents

Part 1: Summary

A summary of unemployment data at district, County, regional and national level

1

Part 2: County

Unemployment figures for the County compared to the South West and the rest of the UK

3

Part 3: Districts

A comparative break down of unemployment figures by district

4

Part 4: Wards

Further breakdown of unemployment figures by ward:

Cheltenham

6

Cotswolds

8

Forest of Dean

10

Gloucester

12

Stroud

14

Tewkesbury

16

Part 5: Map

Distribution of claimant rate across Gloucestershire

18

Part 6: Young People

Data about Young People Not in Education, Employment or Training (NEET)

20

INTRODUCTION

The Unemployment Bulletin provides a monthly update on unemployment data for Gloucestershire, the South West region and the United Kingdom. It is produced by the Economic section of the County Council Chief Executive's Support Unit Research Team. The data is sourced from the Office for National Statistics via Nomis (www.nomis.co.uk).

The claimant count measures the number of people claiming unemployment-related benefit (currently Job Seeker's allowance). The claimant rate is the number of claimants as a proportion of the working age population.

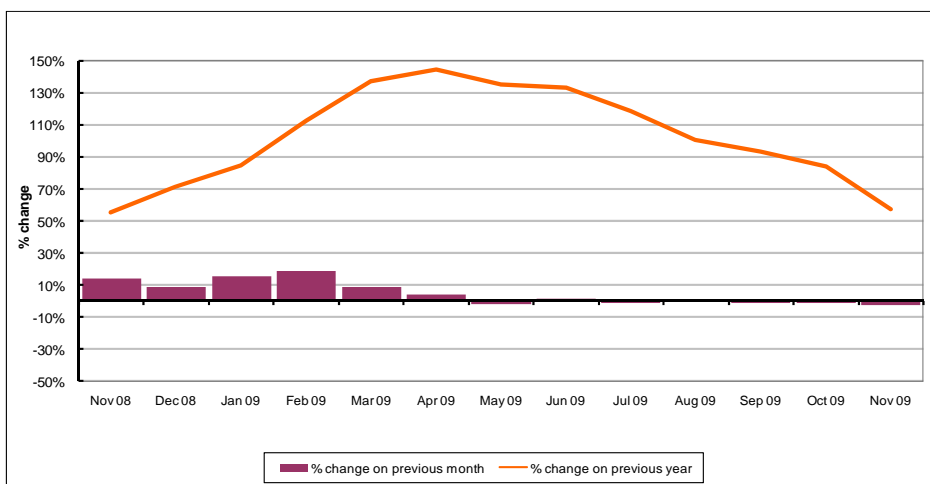
PART 1: SUMMARY

The claimant rate in Gloucestershire was 3.4% in November 2009. This was a decline of 0.1% on the October 2009 figure. The UK rate also declined by 0.1% last month to 4.1%, while the South West rate remained the same at 2.9%. Gloucestershire's rate remains above the South West average of 2.9%, but 0.7% lower than the UK average of 4.1%.

The claimant count in Gloucestershire in November 2009 declined by 298 people. The amount of people claiming in November 2009 was 2.4% lower than the number in October 2009 compared to no change in the South West and a 0.8% decrease for the UK.

The claimant count in Gloucestershire has decreased. The count was 57% higher in November 2009 than at the same point in the previous year as shown in the graph below.

Gloucestershire claimants - Month on Month and Year on Year change: November 2008 to November 2009



Source: ONS Crown Copyright Reserved

Produced by:

The Research Team (Economics)
Chief Executive Support Unit
Gloucestershire County Council
December 2009

DISTRICTS AT A GLANCE

At a glance unemployment information grouped by district. Includes:

Claim count: Total number of people claiming Job Seekers Allowance in November 2009

Compared to last month: How much larger/smaller November's claim count is compared to October, expressed as a %

Claimant rate: The % of working population claiming Job Seekers Allowance in November 2009

Highest claiming ward: The ward with the highest claim count in that district and the rate

CHELTENHAM BOROUGH

Claim count:	2,761
Compared to last month:	-3.7%
Claimant rate:	4.0%
Highest claiming ward	Hesters Way (8.1%)

GLOUCESTER CITY

Claim count:	3,145
Compared to last month:	-4.5%
Claimant rate:	4.4%
Highest claiming ward	Westgate (8.4%)

COTSWOLD DISTRICT

Claim count:	1,083
Compared to last month:	4.0%
Claimant rate:	2.3%
Highest claiming ward	Cirencester Watermoor (4.9%)

STROUD DISTRICT

Claim count:	1,935
Compared to last month:	-1.3%
Claimant rate:	3.0%
Highest claiming ward	Central (7.3%)

FOREST OF DEAN

Claim count:	1,596
Compared to last month:	0.8%
Claimant rate:	3.3%
Highest claiming ward	Cinderford East (5.6%)

TEWKESBURY BOROUGH

Claim count:	1,365
Compared to last month:	-5.0%
Claimant rate:	2.9%
Highest claiming ward	Tewkesbury Prior's Park (5.7%)

YOUNG PEOPLE NOT IN EDUCATION, EMPLOYMENT OR TRAINING (NEET)

As at the end of November 2009 there were 759 young people aged 16-18 not in education, employment or training in Gloucestershire and this figure translates into an adjusted (*) 16-18 NEET population of 4.3%.

PART 2: UK, SW AND GLOUCESTERSHIRE INDICATORS

The unemployment situation in Gloucestershire compared to the South West and the UK.

Claimant Rate

Figure 1: Claimant Rate for Gloucestershire, the South West and UK over the past year

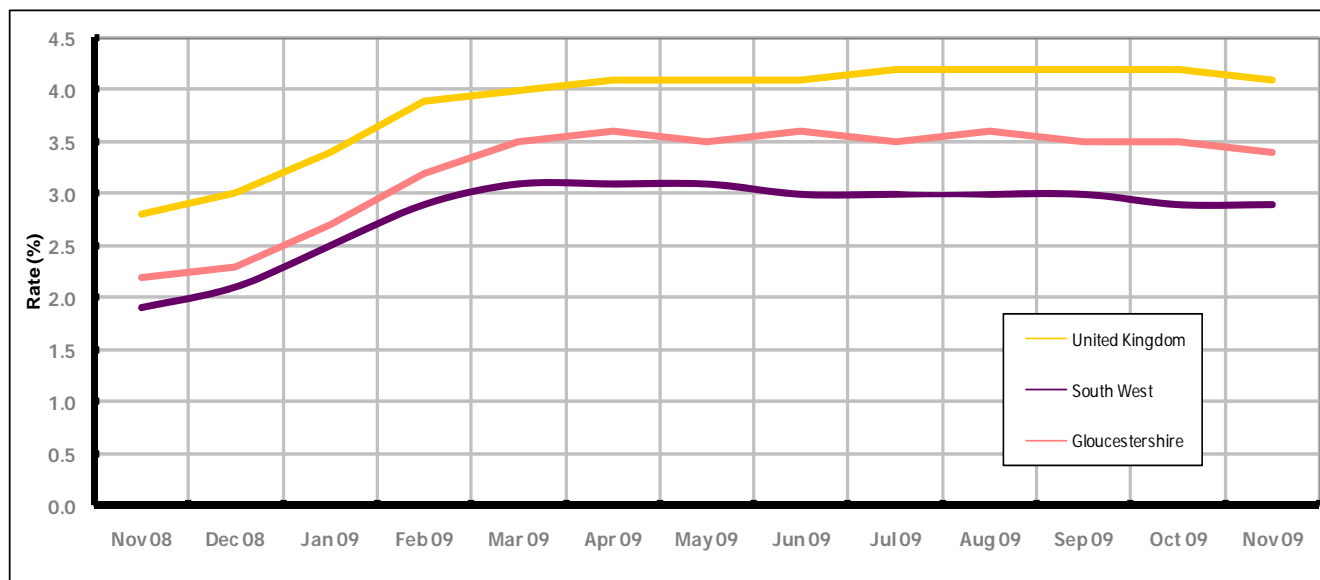


Figure 1 shows the claimant rate for Gloucestershire at 3.4% in November 2009. The rate has remained slightly higher than the South West average over the past year, but persistently lower by approximately 0.7% against the UK average during the same period. The November 2009 rate represented a 0.1% decrease on October 2009.

Claimant Count

Table 1: Analysis of UK, South West and Gloucestershire Claimant Counts

Area	Claimant Count in November 2009	% change on October 2009	Average % increase over the last six months	Consecutive months increasing
UK	1,569,446	-0.8%	+0.2%	0
South West	91,599	0.0%	-0.5%	0
Gloucestershire	11,885	-2.4%	-1.0%	0

Table 1 shows that in November 2009, the number of claimants in Gloucestershire was 2.4% lower than the number in October 2009.

The average growth in claimants in Gloucestershire for the six months to November 2009 was -1%. This is 1.2% lower than the UK average and 0.5% lower than the South West region.

PART 3: LOCAL AUTHORITY DISTRICT ANALYSIS

Claimant Rate and Claimant Count

Figure 2: Claimant Rate (%) across Gloucestershire - November 2009

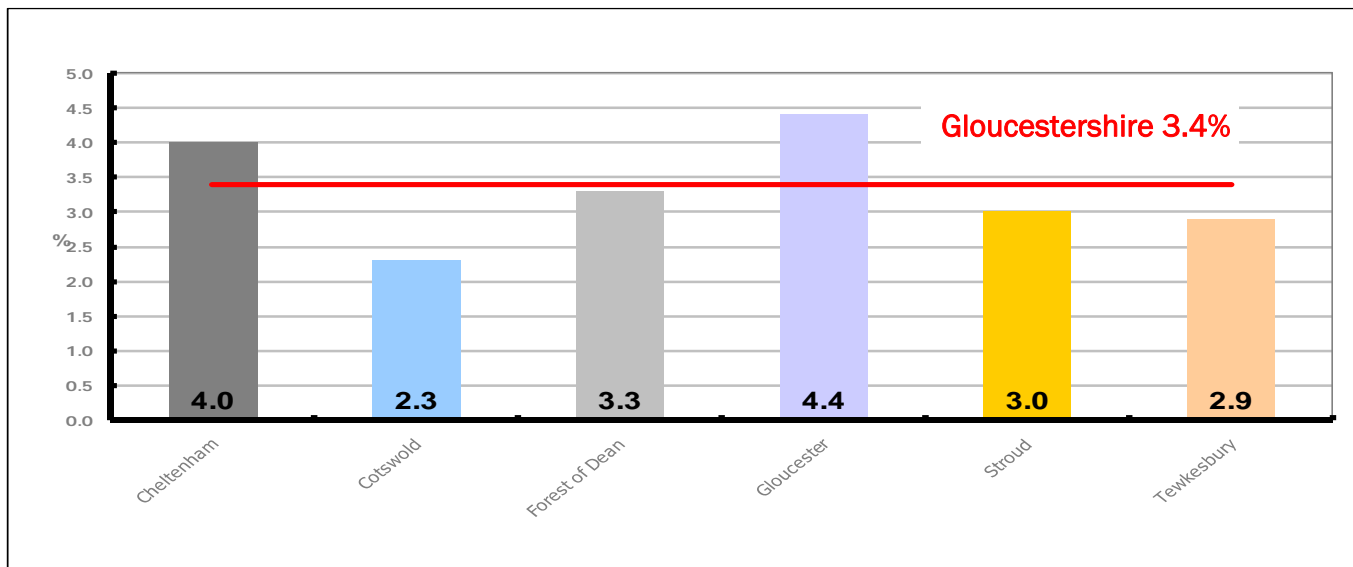


Figure 2 shows the claimant rate for November 2009 in Gloucestershire. Between October 2009 and November 2009 Cotswold experienced an increase, while Forest of Dean and Stroud remained the same and Cheltenham, Gloucester and Tewkesbury districts declined.

Figure 3: Total claimants over the past year across Gloucestershire Districts

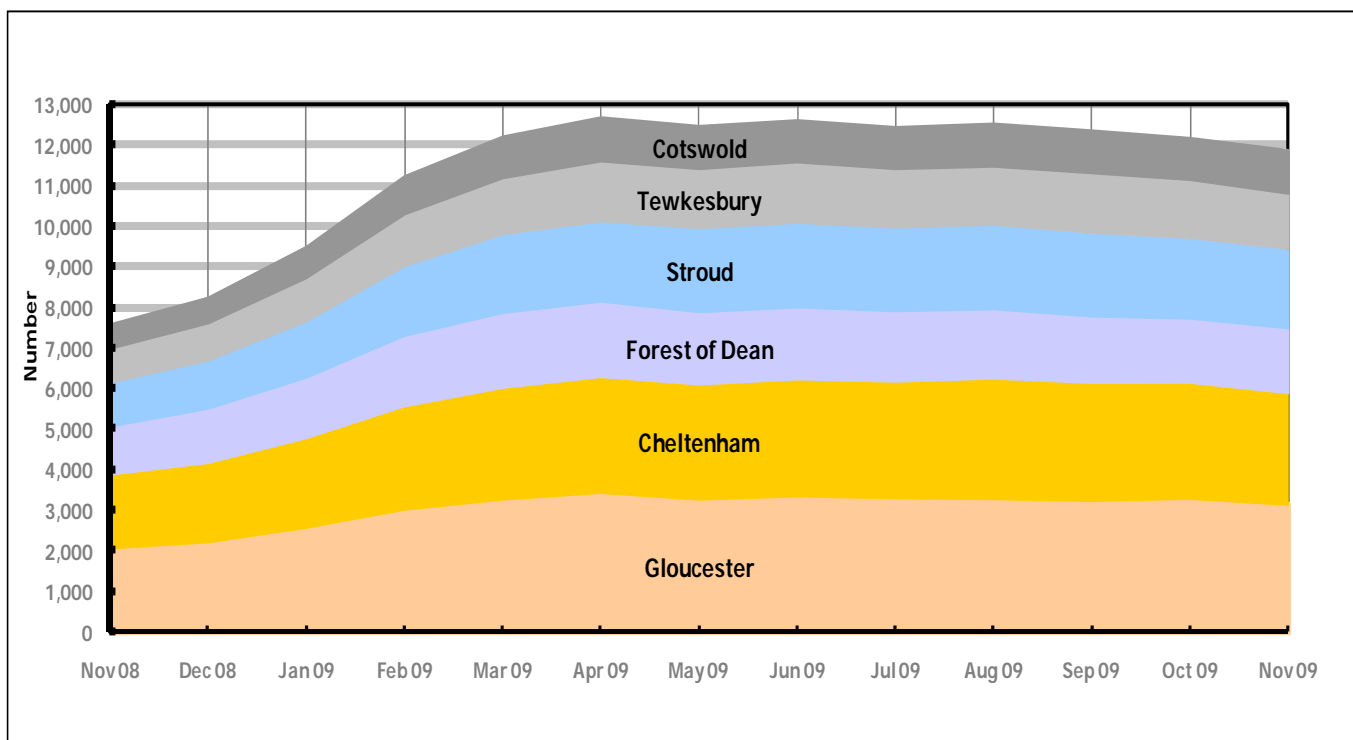


Figure 3 shows the overall claimant count by district for Gloucestershire over the past year. It demonstrates a noticeable levelling off since April 2009.

Table 2: Analysis of Gloucestershire and District Claimant Counts

Total	Nov 09 Number	Nov 09 Rate	Oct 09 Number	Oct 09 Rate	Monthly change	% monthly change	Monthly change of rate
Gloucestershire	11,885	3.4	12,183	3.5	-298	-2.4%	-0.1
Cheltenham	2,761	4.0	2,868	4.1	-107	-3.7%	-0.1
Cotswold	1,083	2.3	1,041	2.2	42	4.0%	0.1
Forest of Dean	1,596	3.3	1,584	3.3	12	0.8%	0.0
Gloucester	3,145	4.4	3,292	4.6	-147	-4.5%	-0.2
Stroud	1,935	3.0	1,961	3.0	-26	-1.3%	0.0
Tewkesbury	1,365	2.9	1,437	3.1	-72	-5.0%	-0.2

Table 2 shows the change in the claimant count in November 2009 compared to October 2009. Cotswold and Forest of Dean districts experienced an increase while the remaining districts underwent a decrease.

Table 3: Analysis of Male Gloucestershire and District Claimant Counts

Male	Nov 09 Number	Nov 09 Rate	Oct 09 Number	Oct 09 Rate	Monthly change	% monthly change	Monthly change of rate
Gloucestershire	8,650	4.7	8,839	4.8	-189	-2.1%	-0.1
Cheltenham	2,055	5.6	2,115	5.8	-60	-2.8%	-0.2
Cotswold	756	3.0	738	2.9	18	2.4%	0.1
Forest of Dean	1,135	4.4	1,128	4.4	7	0.6%	0.0
Gloucester	2,345	6.3	2,463	6.6	-118	-4.8%	-0.3
Stroud	1,404	4.1	1,405	4.1	-1	-0.1%	0.0
Tewkesbury	955	3.9	990	4.1	-35	-3.5%	-0.2

Table 3 shows the change in the male claimant count in November 2009 compared to October 2009. Cotswold and Forest of Dean districts experienced an increase while the other districts underwent a decrease.

Table 4: Analysis of Female Gloucestershire and District Claimant Counts

Female	Nov 09 Number	Nov 09 Rate	Oct 09 Number	Oct 09 Rate	Monthly change	% monthly change	Monthly change of rate
Gloucestershire	3,235	2.0	3,344	2.0	-109	-3.3%	0.0
Cheltenham	706	2.2	753	2.3	-47	-6.2%	-0.1
Cotswold	327	1.4	303	1.3	24	7.9%	0.1
Forest of Dean	461	2.0	456	2.0	5	1.1%	0.0
Gloucester	800	2.3	829	2.4	-29	-3.5%	-0.1
Stroud	531	1.7	556	1.8	-25	-4.5%	-0.1
Tewkesbury	410	1.8	447	2.0	-37	-8.3%	-0.2

Table 4 shows the change in the female claimant count in November 2009 compared to October 2009. Cotswold and Forest of Dean districts experienced an increase, while the other districts underwent a decline.

PART 4: LOCAL AUTHORITY DISTRICT AND WARD ANALYSIS

This section covers the six districts and a comparison of their constituent wards.

4.1 Cheltenham Borough

Claimant Rate and Claimant Count

Figure 4: Cheltenham Borough claimant rate over the last year

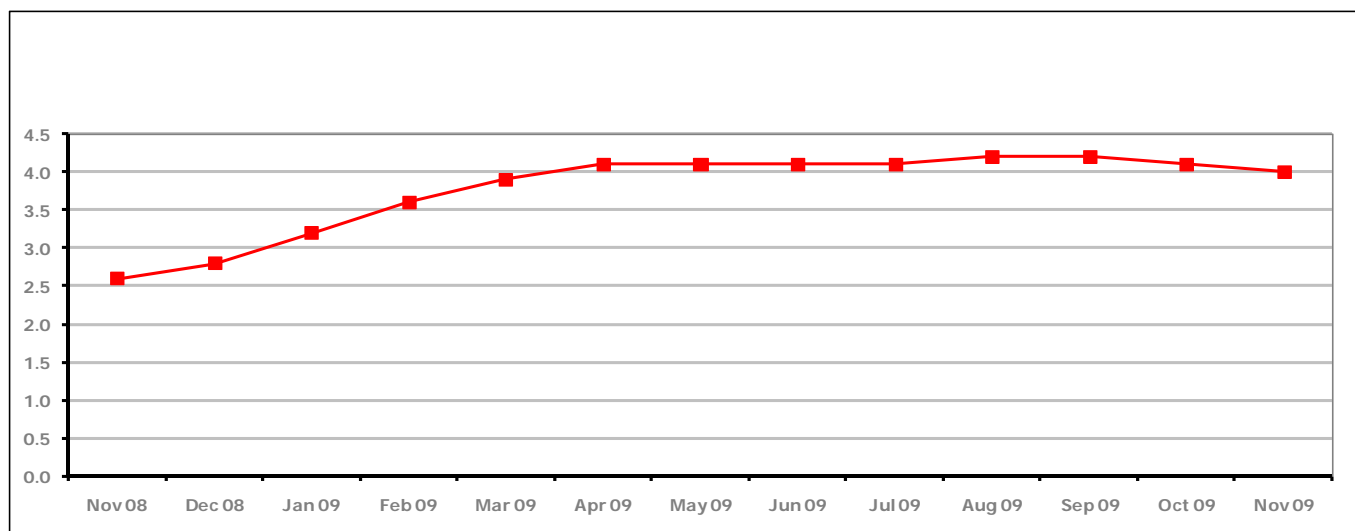


Figure 4 shows the claimant rate in Cheltenham declined in November 2009 to 4.0%.

Figure 5: Cheltenham Borough claimants - Month on Month and Year on Year change

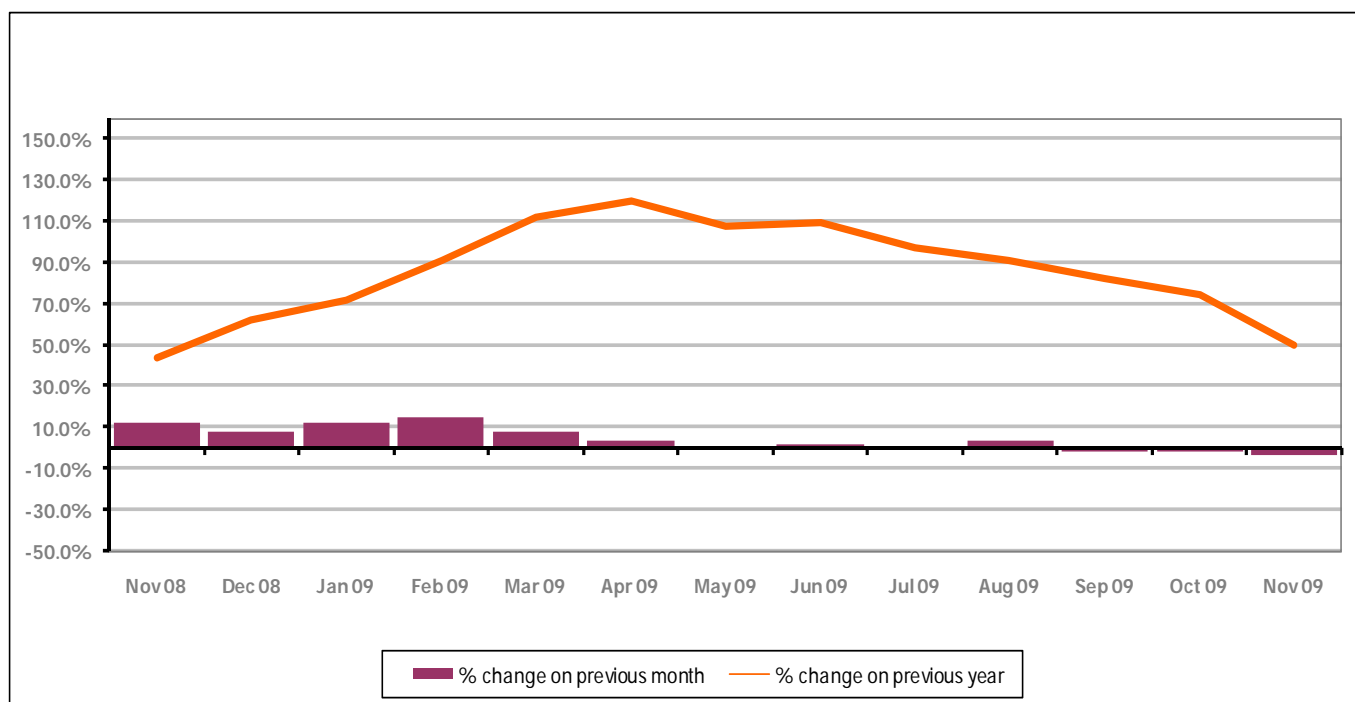


Figure 5 shows the claimant count declined by 3.7% since last month. In addition, the change on the previous year has gone down in November 2009 compared to October 2009 to 50%.

PART 4: LOCAL AUTHORITY DISTRICT AND WARD ANALYSIS

4.1 Cheltenham Borough continued...

Figure 6: Claimant rates across Cheltenham Borough wards - November 2009

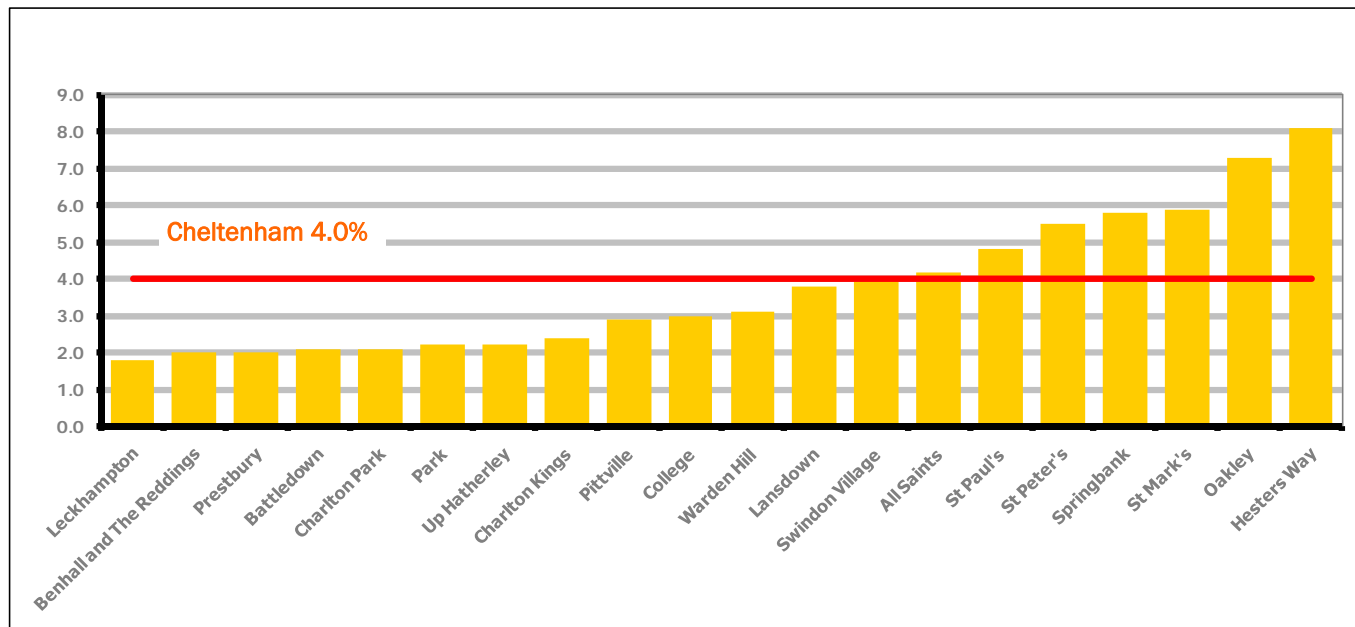
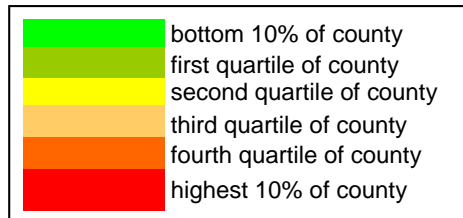


Figure 6 shows the claimant rates for Cheltenham Borough wards. The red line represents the average claimant rate across the Borough of 4.0%. Seven wards lie above the average.

Table 5: Analysis of Claimant Count at Cheltenham Borough ward level - November 2009

District	Ward	Rate	Rank*
Cheltenham	Leckhampton	1.8	26
Cheltenham	Benhall and The Reddings	2.0	35
Cheltenham	Prestbury	2.0	35
Cheltenham	Battledown	2.1	44
Cheltenham	Charlton Park	2.1	44
Cheltenham	Park	2.2	51
Cheltenham	Up Hatherley	2.2	51
Cheltenham	Charlton Kings	2.4	61
Cheltenham	Pittville	2.9	80
Cheltenham	College	3.0	85
Cheltenham	Warden Hill	3.1	89
Cheltenham	Lansdown	3.8	108
Cheltenham	Swindon Village	4.0	114
Cheltenham	All Saints	4.2	118
Cheltenham	St Paul's	4.8	124
Cheltenham	St Peter's	5.5	130
Cheltenham	Springbank	5.8	134
Cheltenham	St Mark's	5.9	135
Cheltenham	Oakley	7.3	138
Cheltenham	Hesters Way	8.1	141



* 1 = "best" and 142 = "worst"

Table 5 shows overall claimant rates for Cheltenham Borough wards and their position relative to all wards in Gloucestershire.

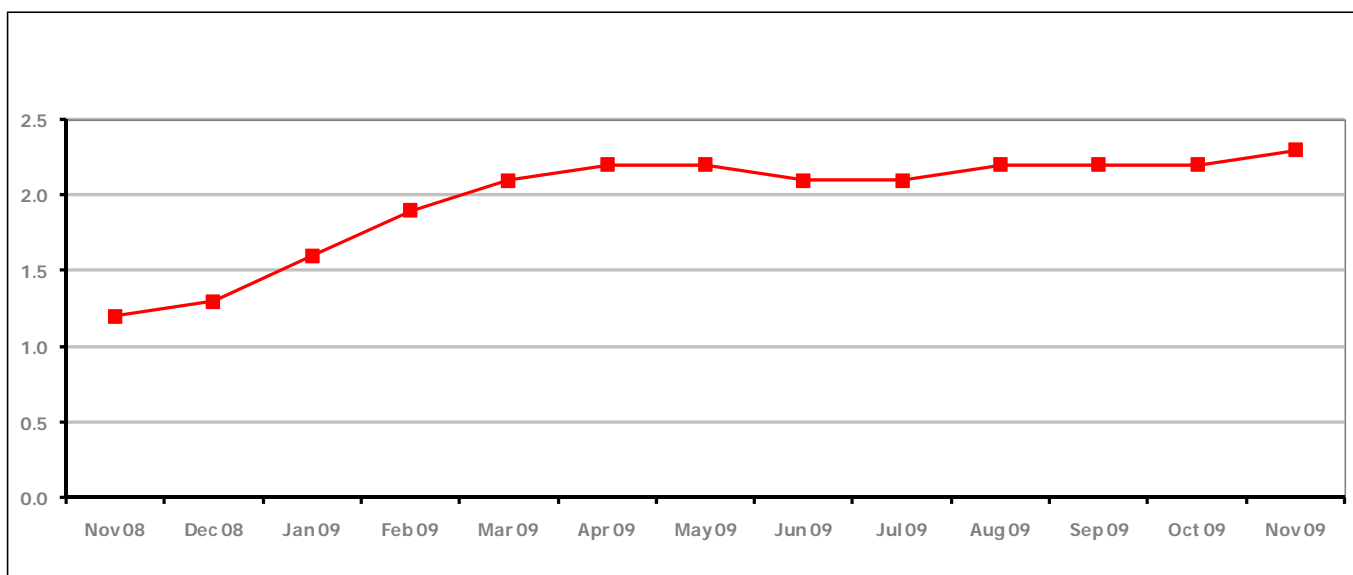
PART 4: LOCAL AUTHORITY DISTRICT AND WARD ANALYSIS**4.2 Cotswold District****Claimant Rate and Claimant Count***Figure 7: Cotswold District claimant rate over the last year*

Figure 7 shows the claimant rate in Cotswold District increased in November 2009 to 2.3%.

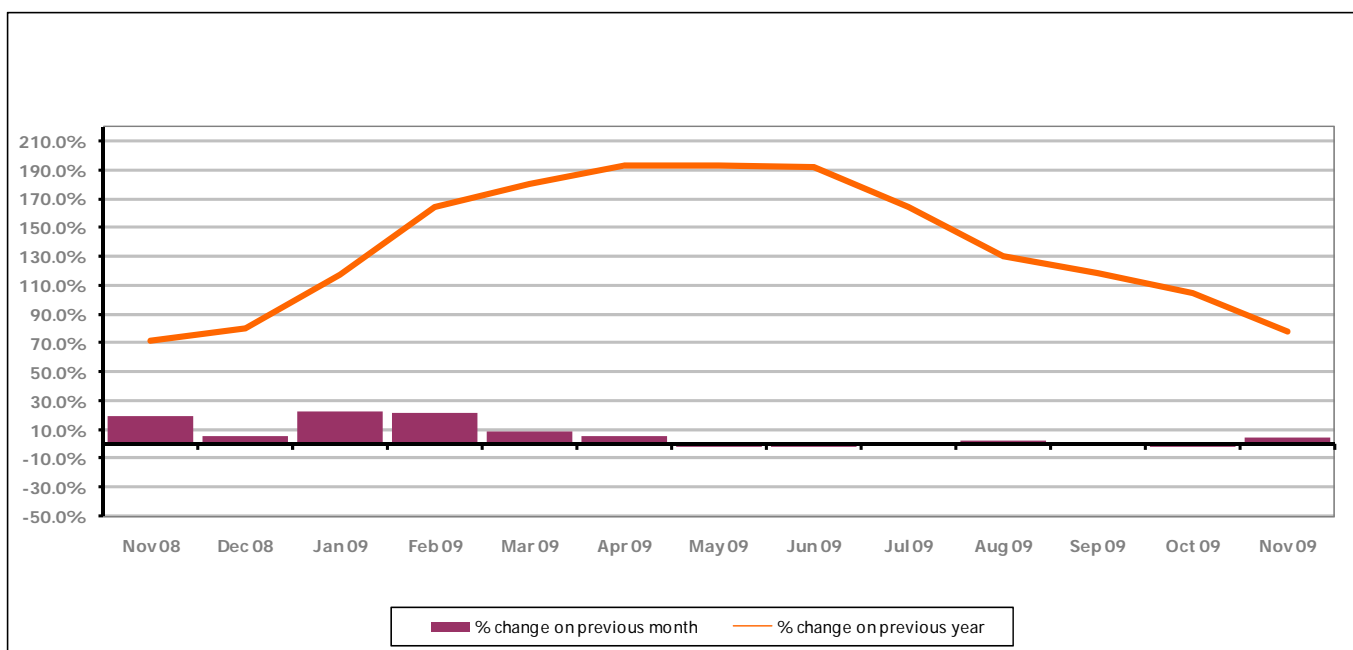
Figure 8: Cotswold District claimants - Month on Month and Year on Year change

Figure 8 shows the claimant count increased by 4.0% since October 2009. The change on the previous year has decreased from October 2009 to November 2009 to 78.1%.

PART 4: LOCAL AUTHORITY DISTRICT AND WARD ANALYSIS

4.2 Cotswold District continued...

Figure 9: Claimant rates across Cotswold District wards - November 2009

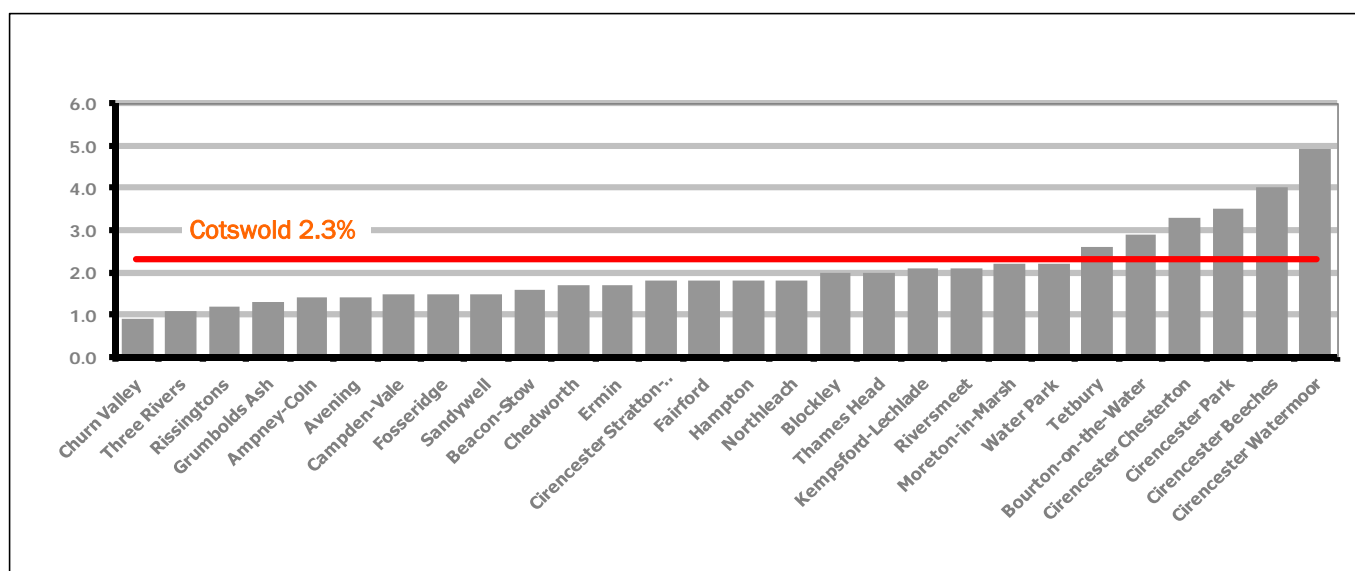
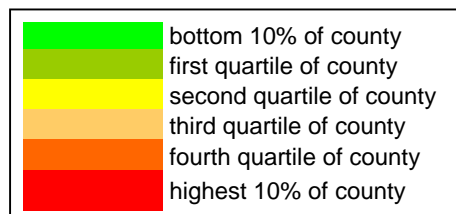


Figure 9 shows the claimant rates for Cotswold District wards. The red line represents the average claimant rate across the District of 2.3%. Six wards lie above the average.

Table 6: Analysis of Claimant Count at Cotswold District ward level - November 2009

District	Ward	Rate	Rank*
Cotswolds	Churn Valley	0.9	2
Cotswolds	Three Rivers	1.1	6
Cotswolds	Rissingtons	1.2	8
Cotswolds	Grumbolds Ash	1.3	9
Cotswolds	Ampney-Coln	1.4	10
Cotswolds	Avening	1.4	10
Cotswolds	Campden-Vale	1.5	15
Cotswolds	Fosseridge	1.5	15
Cotswolds	Sandywell	1.5	15
Cotswolds	Beacon-Stow	1.6	18
Cotswolds	Chedworth	1.7	20
Cotswolds	Ermin	1.7	20
Cotswolds	Cirencester Stratton-Whiteway	1.8	26
Cotswolds	Fairford	1.8	26
Cotswolds	Hampton	1.8	26
Cotswolds	Northleach	1.8	26
Cotswolds	Blockley	2.0	35
Cotswolds	Thames Head	2.0	35
Cotswolds	Kempsford-Lechlade	2.1	44
Cotswolds	Riversmeet	2.1	44
Cotswolds	Moreton-in-Marsh	2.2	51
Cotswolds	Water Park	2.2	51
Cotswolds	Tetbury	2.6	73
Cotswolds	Bourton-on-the-Water	2.9	80
Cotswolds	Cirencester Chesterton	3.3	94
Cotswolds	Cirencester Park	3.5	100
Cotswolds	Cirencester Beeches	4.0	114
Cotswolds	Cirencester Watermoor	4.9	126



* 1 = "best" and 142 = "worst"

Table 6 shows overall claimant rates for Cotswold District wards and their position relative to all wards in Gloucestershire.

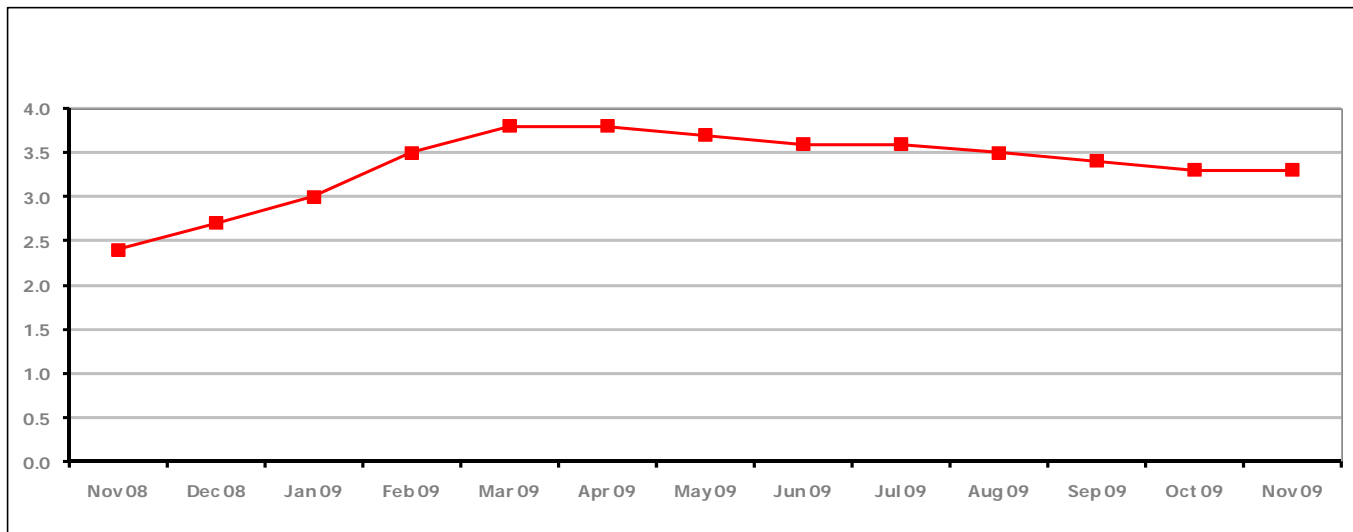
PART 4: LOCAL AUTHORITY DISTRICT AND WARD ANALYSIS**4.3 Forest of Dean District****Claimant Rate and Claimant Count***Figure 10: Forest of Dean District claimant rate over the last year*

Figure 10 shows the claimant rate in the Forest of Dean remained the same as last month at 3.3%.

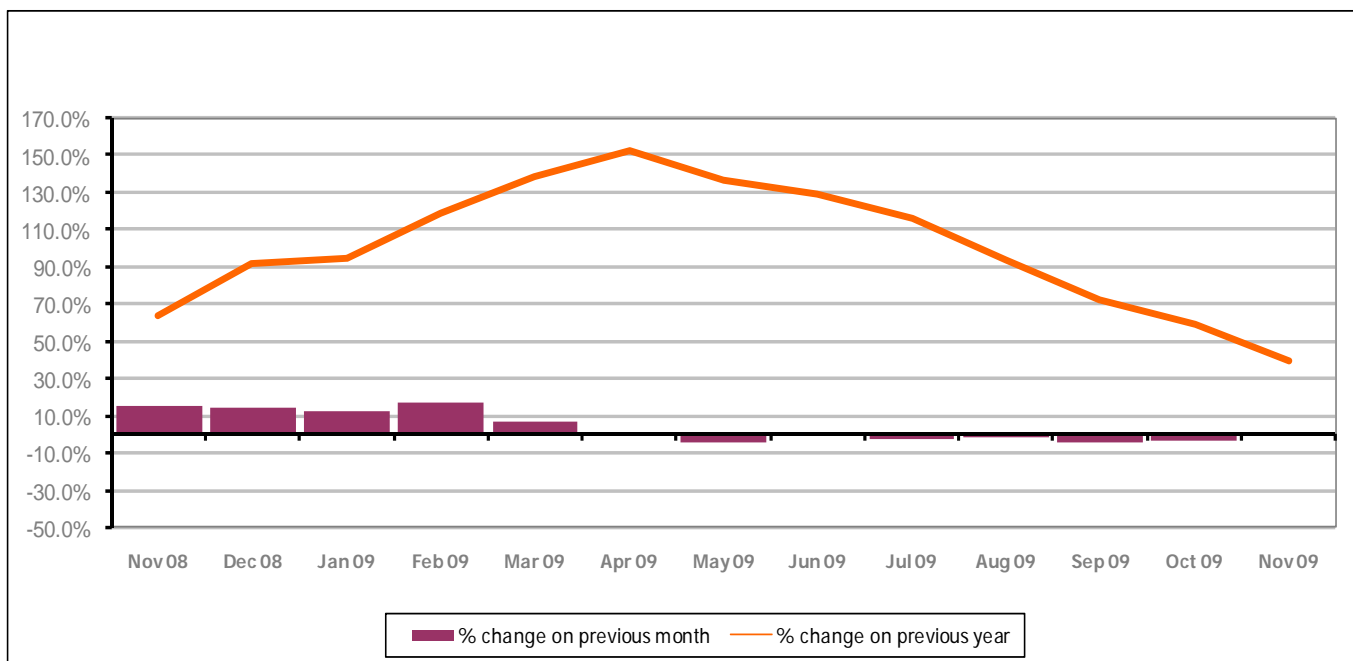
Figure 11: Forest of Dean District claimants - Month on Month and Year on Year change

Figure 11 shows the claimant count increased by 0.8% since October 2009, the first increase for seven months. The change on the previous year decreased between November 2009 and October 2009 to 39.1%.

PART 4: LOCAL AUTHORITY DISTRICT AND WARD ANALYSIS

4.3 Forest of Dean District continued...

Figure 12: Claimant rates across Forest of Dean District wards - November 2009

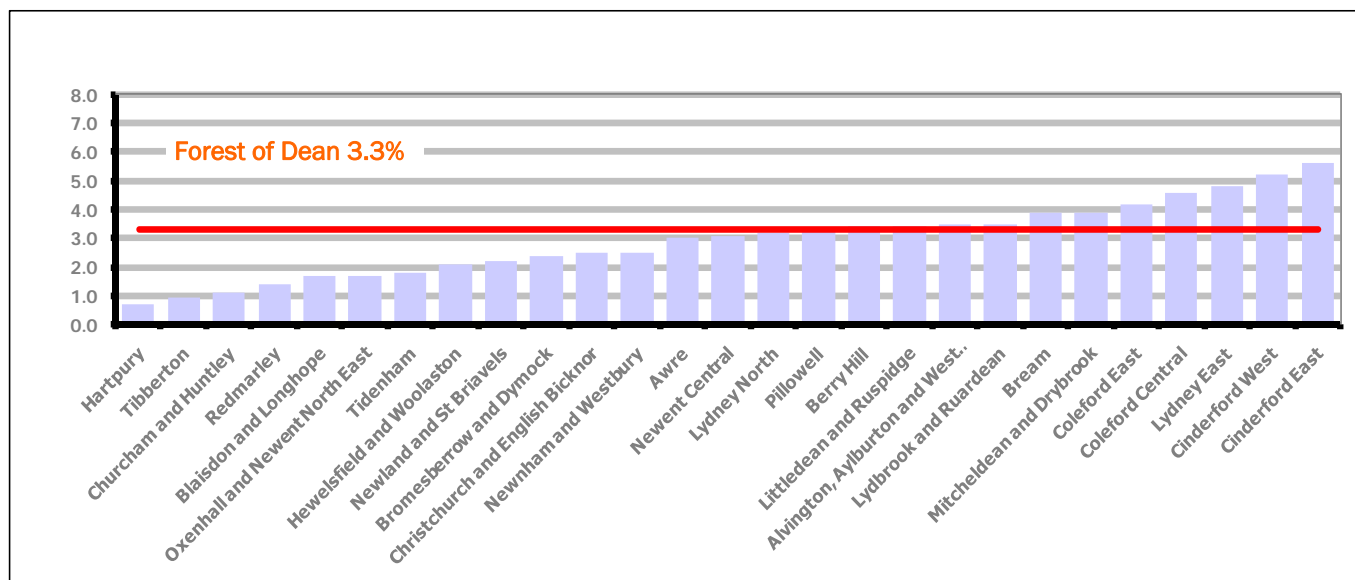


Figure 12 shows the claimant rates for Forest of Dean District wards. The red line represents the average claimant rate across the District of 3.3%. Eleven wards lie above the average.

Table 7: Analysis of Claimant Count at Forest of Dean District ward level - November 2009

District	Ward	Rate	Rank*
Forest	Hartpur	0.7	1
Forest	Tibberton	0.9	2
Forest	Churcham and Huntley	1.1	6
Forest	Redmarley	1.4	10
Forest	Blaisdon and Longhope	1.7	20
Forest	Oxenhall and Newent North East	1.7	20
Forest	Tidenham	1.8	26
Forest	Hewelsfield and Woolaston	2.1	44
Forest	Newland and St Briavels	2.2	51
Forest	Bromesberrow and Dymock	2.4	61
Forest	Christchurch and English Bicknor	2.5	65
Forest	Newnham and Westbury	2.5	65
Forest	Awre	3.0	85
Forest	Newent Central	3.1	89
Forest	Lydney North	3.2	92
Forest	Pillowell	3.3	94
Forest	Berry Hill	3.4	97
Forest	Littledean and Ruspidge	3.4	97
Forest	Alvington, Aylburton and West Lydney	3.5	100
Forest	Lydbrook and Ruardean	3.5	100
Forest	Bream	3.9	112
Forest	Mitcheldean and Drybrook	3.9	112
Forest	Coleford East	4.2	118
Forest	Coleford Central	4.6	120
Forest	Lydney East	4.8	124
Forest	Cinderford West	5.2	129
Forest	Cinderford East	5.6	132

	bottom 10% of county
	first quartile of county
	second quartile of county
	third quartile of county
	fourth quartile of county
	highest 10% of county

* 1 = "best" and 142 = "worst"

Table 7 shows overall claimant rates for the Forest of Dean District wards and their position relative to all wards in Gloucestershire.

PART 4: LOCAL AUTHORITY DISTRICT AND WARD ANALYSIS

4.4 Gloucester City

Claimant Rate and Claimant Count

Figure 13: Gloucester City claimant rate over the last year

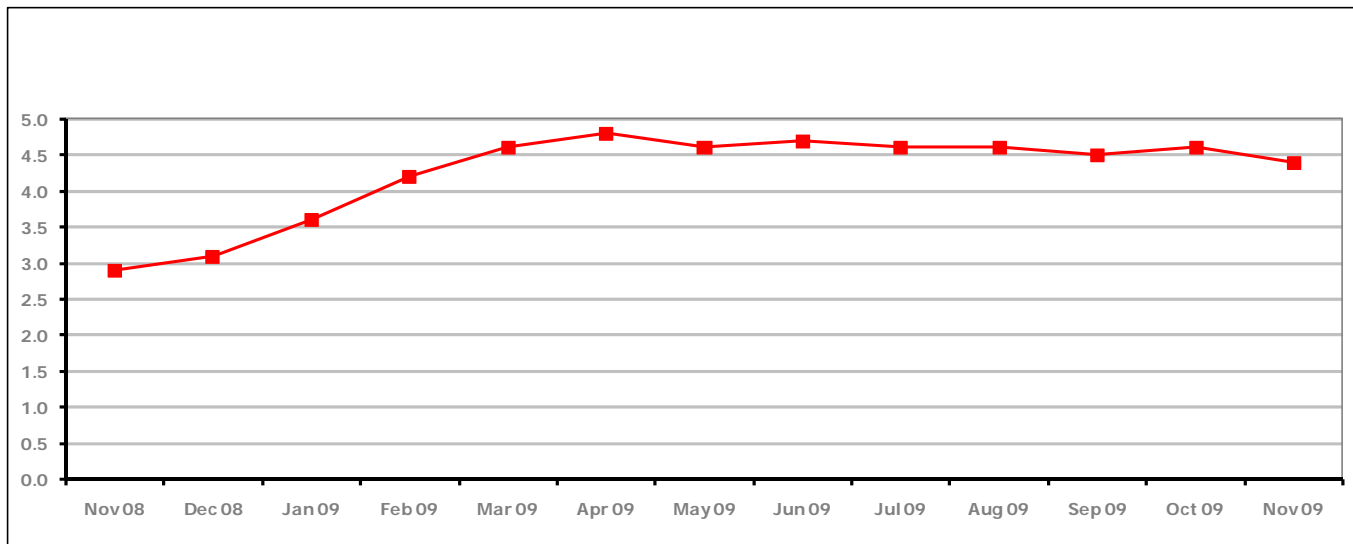


Figure 13 shows the claimant rate for Gloucester City declined in November 2009 to 4.4%.

Figure 14: Gloucester City claimants - Month on Month and Year on Year change

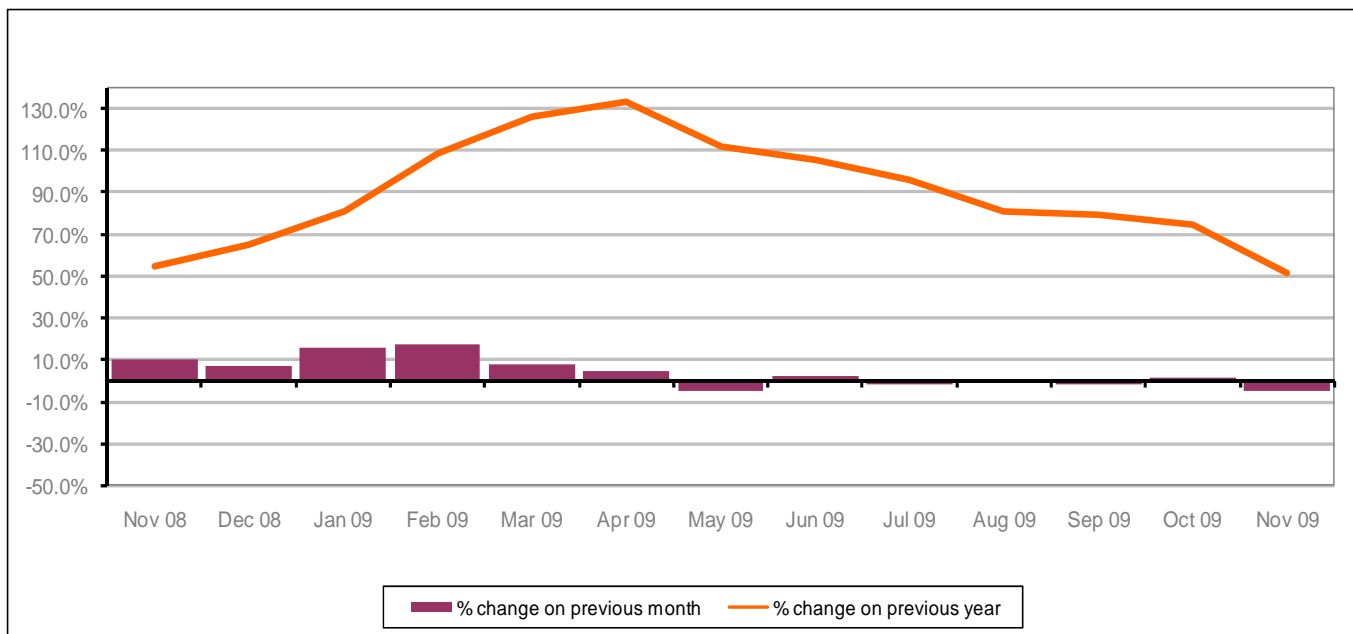


Figure 14 shows the monthly claimant count decreased by 4.5% since October 2009. The change on the previous year has decreased between October 2009 and November 2009 to 51.9%.

PART 4: LOCAL AUTHORITY DISTRICT AND WARD ANALYSIS

4.4 Gloucester City continued...

Figure 15: Claimant rates across Gloucester City wards - November 2009

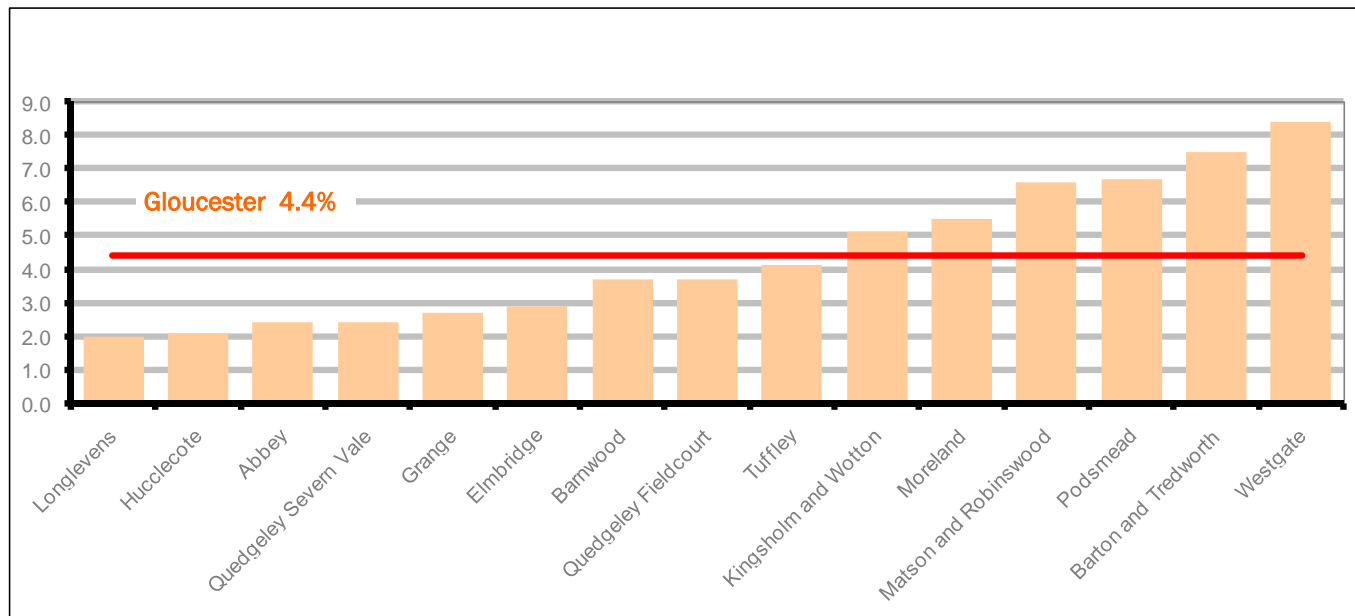
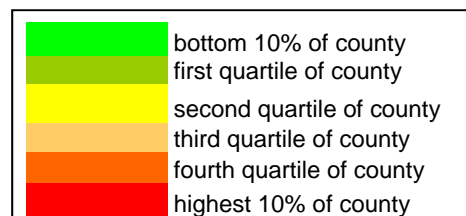


Figure 15 shows the claimant rates for Gloucester City district wards. The red line represents the average claimant rate across the City of 4.4%. Six wards lie above the average.

Table 8: Analysis of Claimant Count at Gloucester City ward level - November 2009

District	Ward	Rate	Rank*
Gloucester	Longlevens	2.0	35
Gloucester	Hucclecote	2.1	44
Gloucester	Abbey	2.4	61
Gloucester	Quedgeley Severn Vale	2.4	61
Gloucester	Grange	2.7	75
Gloucester	Elmbridge	2.9	80
Gloucester	Barnwood	3.7	106
Gloucester	Quedgeley Fieldcourt	3.7	106
Gloucester	Tuffley	4.1	117
Gloucester	Kingsholm and Wotton	5.1	128
Gloucester	Moreland	5.5	130
Gloucester	Matson and Robinswood	6.6	136
Gloucester	Podsmead	6.7	137
Gloucester	Barton and Tredworth	7.5	140
Gloucester	Westgate	8.4	142



* 1 = "best" and 142 = "worst"

Table 8 shows overall claimant rates for Gloucester City wards and their position relative to all wards in Gloucestershire.

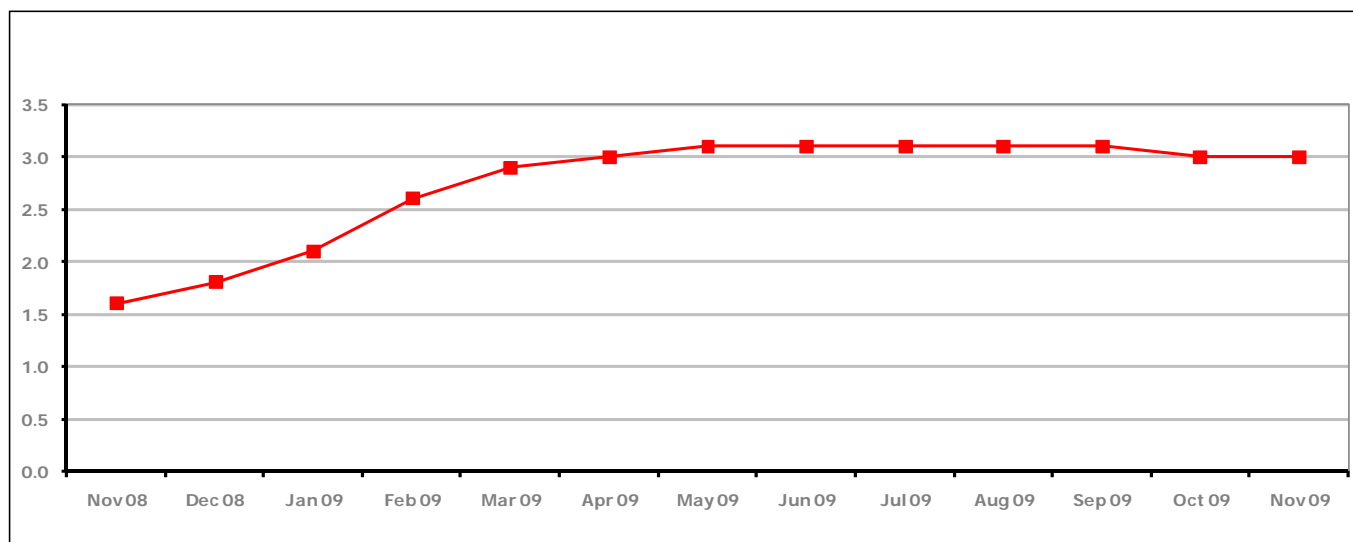
PART 4: LOCAL AUTHORITY DISTRICT AND WARD ANALYSIS**4.5 Stroud District****Claimant Rate and Claimant Count***Figure 16: Stroud District claimant rate over the last year*

Figure 16 shows the claimant rate for Stroud District remained the same as last month at 3.0%.

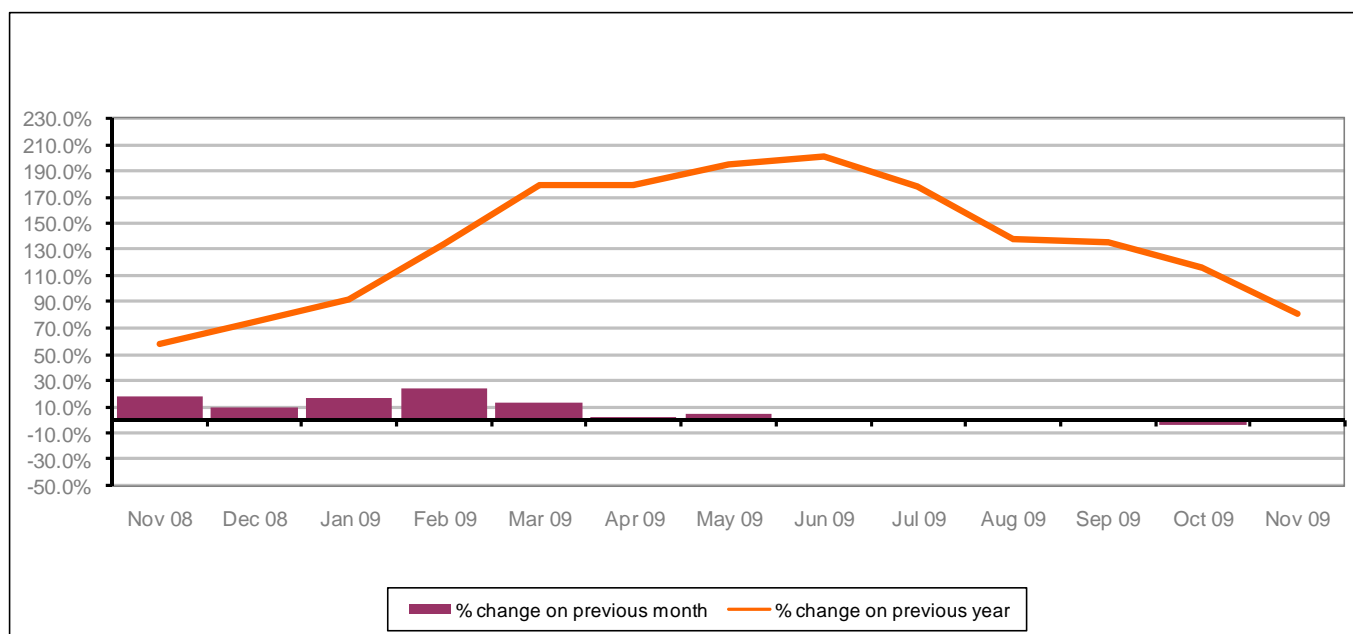
Figure 17: Stroud District claimants - Month on Month and Year on Year change

Figure 17 shows the monthly claimant count declined by 1.3% since October 2009. The change on the previous year has decreased between October 2009 and November 2009 to 80.5%.

PART 4: LOCAL AUTHORITY AND DISTRICT ANALYSIS

4.5 Stroud District continued...

Figure 18: Claimant rates across Stroud District wards - November 2009

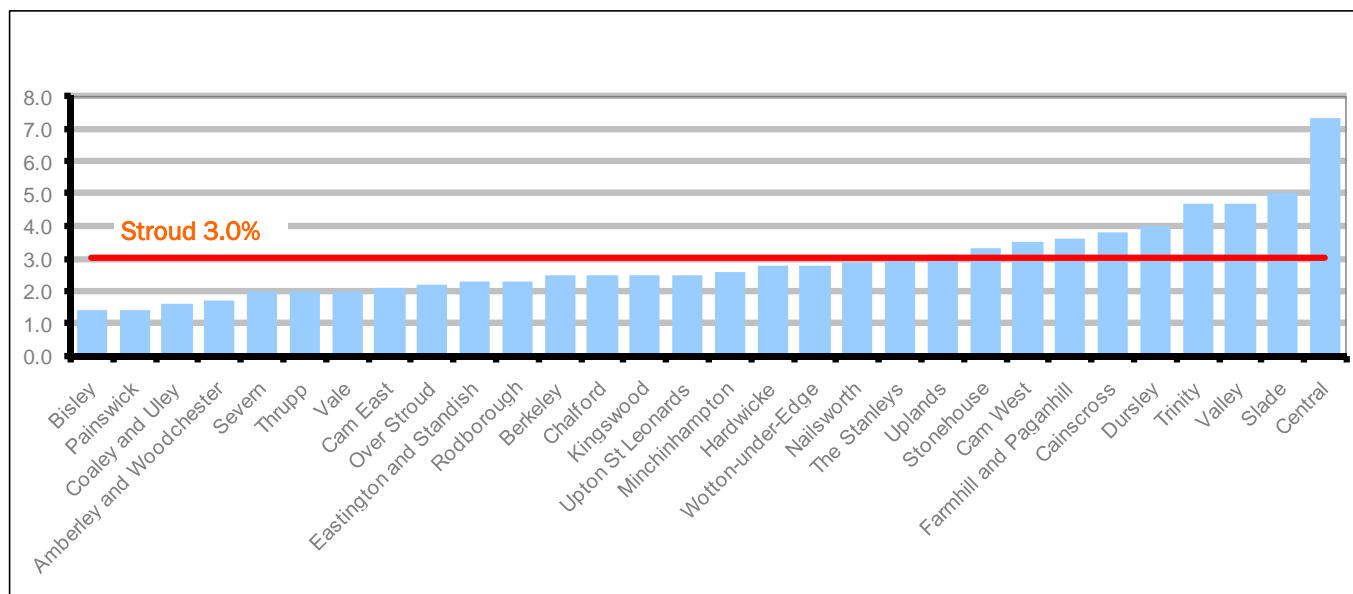
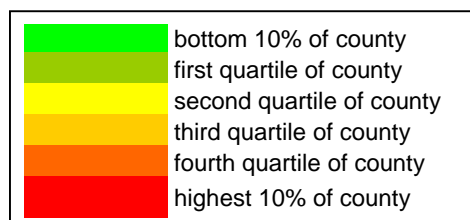


Figure 18 shows the claimant rates in Stroud District wards. The red line represents the average claimant rate across the District of 3.0% and ten wards are above the average.

Table 9: Analysis of Claimant Count at Stroud District ward level - November 2009

District	Ward	Rate	Rank*
Stroud	Bisley	1.4	10
Stroud	Painswick	1.4	10
Stroud	Coaley and Uley	1.6	18
Stroud	Amberley and Woodchester	1.7	20
Stroud	Severn	2.0	35
Stroud	Thrupp	2.0	35
Stroud	Vale	2.0	35
Stroud	Cam East	2.1	44
Stroud	Over Stroud	2.2	51
Stroud	Eastington and Standish	2.3	57
Stroud	Rodborough	2.3	57
Stroud	Berkeley	2.5	65
Stroud	Chalford	2.5	65
Stroud	Kingswood	2.5	65
Stroud	Upton St Leonards	2.5	65
Stroud	Minchinhampton	2.6	73
Stroud	Hardwicke	2.8	78
Stroud	Wotton-under-Edge	2.8	78
Stroud	Nailsworth	2.9	80
Stroud	The Stanleys	3.0	85
Stroud	Uplands	3.1	89
Stroud	Stonehouse	3.3	94
Stroud	Cam West	3.5	100
Stroud	Farmhill and Paganhill	3.6	104
Stroud	Cainscross	3.8	108
Stroud	Dursley	4.0	114
Stroud	Trinity	4.7	121
Stroud	Valley	4.7	121
Stroud	Slade	5.0	127
Stroud	Central	7.3	138



* 1 = "best" and 142 = "worst"

Table 9 shows overall claimant rates for Stroud District wards and their position relative to all wards in Gloucestershire.

PART 4: LOCAL AUTHORITY DISTRICT AND WARD ANALYSIS

4.6 Tewkesbury District

Claimant Rate and Claimant Count

Figure 19: Tewkesbury District claimant rate over the last year

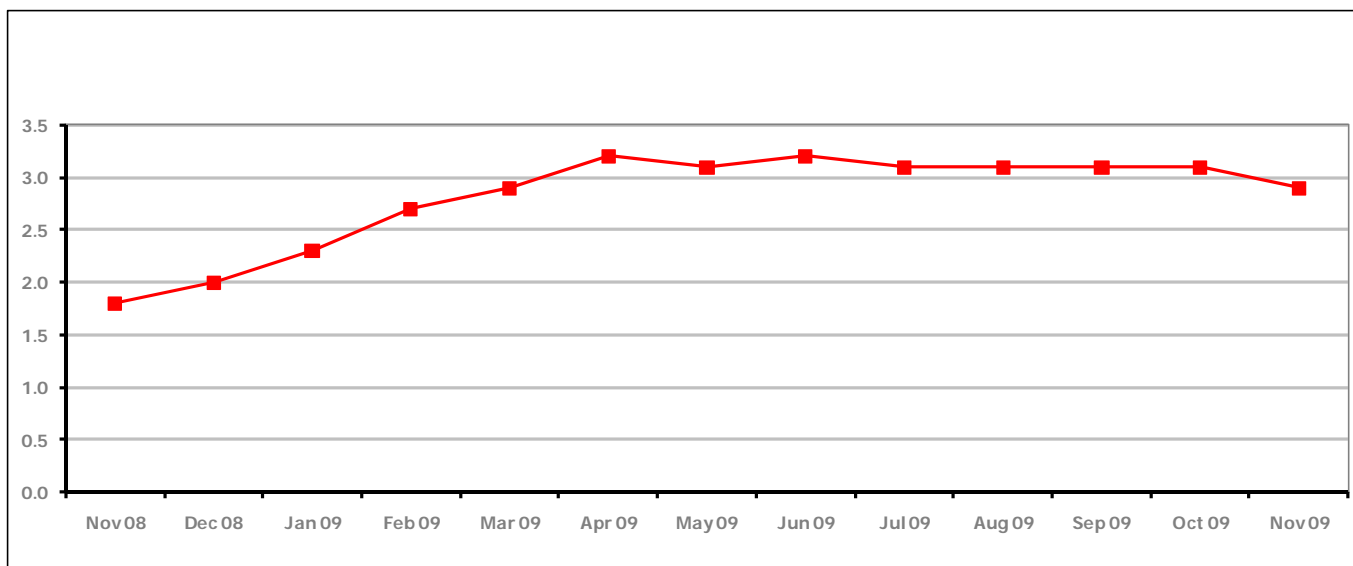


Figure 19 shows the claimant rate for Tewkesbury District declined to 2.9%, the first decrease since July 2009.

Figure 20: Tewkesbury District claimants - Month on Month and Year on Year change

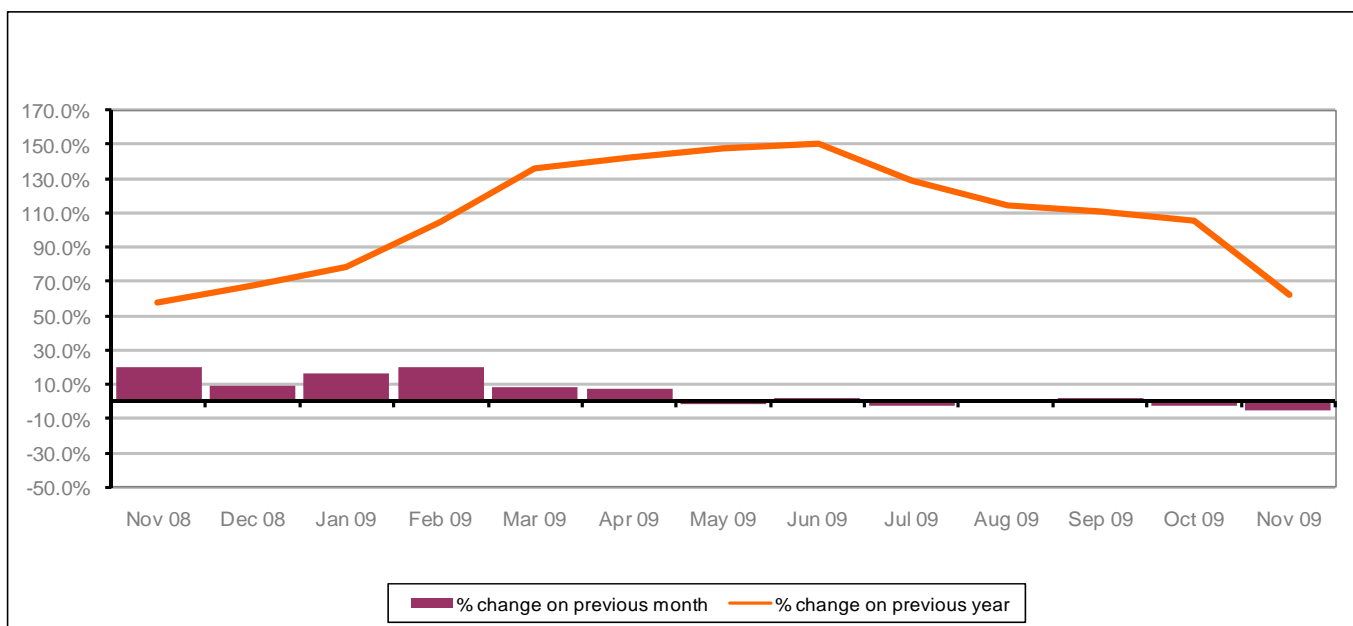


Figure 20 shows that the monthly claimant count declined in November 2009 by 5.0%. The change on the previous year decreased between October 2009 and November 2009 to 62.5%.

PART 4: LOCAL AUTHORITY AND DISTRICT ANALYSIS

4.6 Tewkesbury District continued...

Figure 21: Claimant rates across Tewkesbury District wards - November 2009

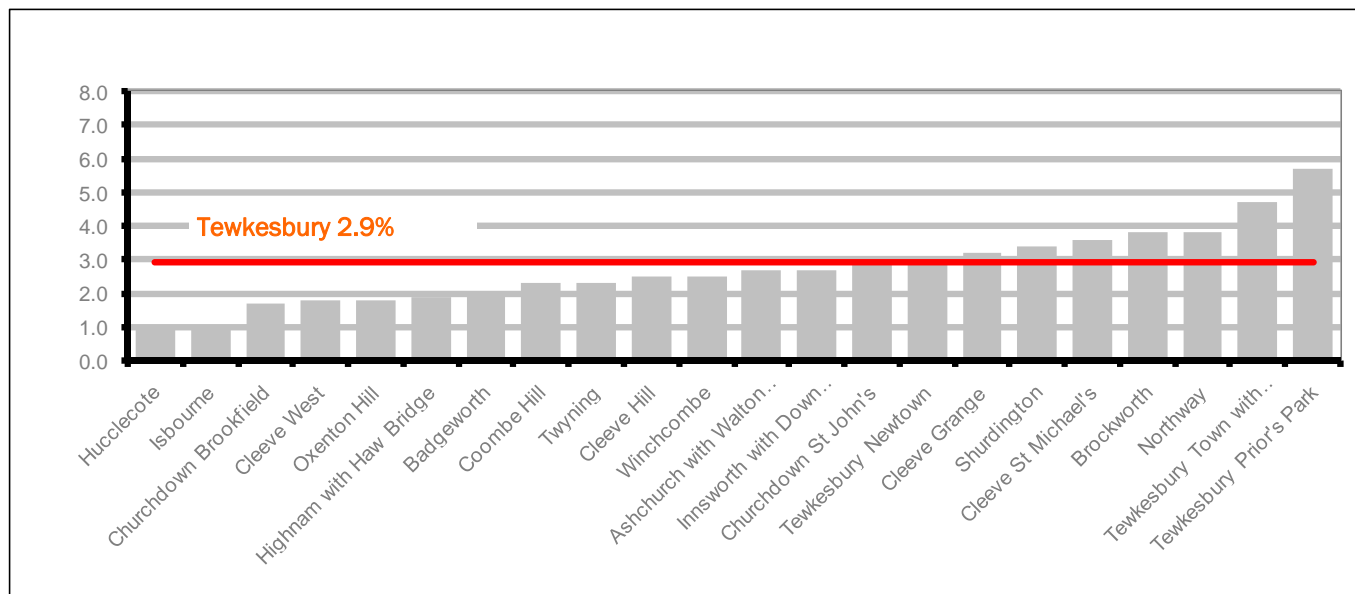
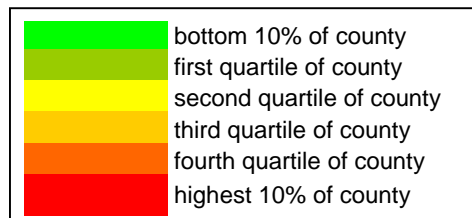


Figure 21 shows the claimant rates in Tewkesbury District wards. The red line represents the average claimant rate across the District of 2.9% and eight wards are above the average.

Table 10: Analysis of Claimant Count at Tewkesbury District level - November 2009

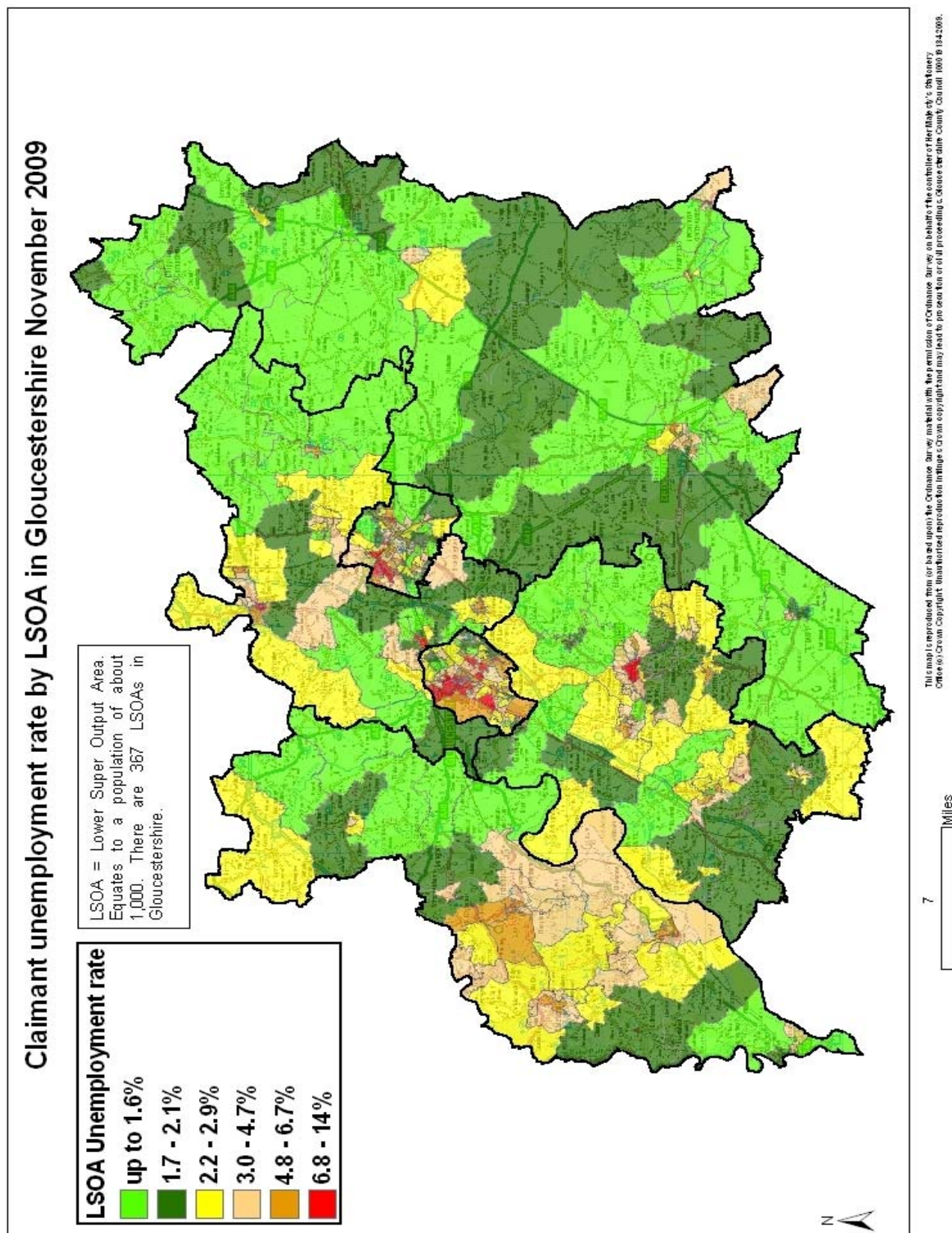
District	Ward	Rate	Rank*
Tewkesbury	Hucclecote	1.0	4
Tewkesbury	Isbourne	1.0	4
Tewkesbury	Churchdown Brookfield	1.7	20
Tewkesbury	Cleeve West	1.8	26
Tewkesbury	Oxenton Hill	1.8	26
Tewkesbury	Highnam with Haw Bridge	1.9	34
Tewkesbury	Badgeworth	2.0	35
Tewkesbury	Coombe Hill	2.3	57
Tewkesbury	Twynning	2.3	57
Tewkesbury	Cleeve Hill	2.5	65
Tewkesbury	Winchcombe	2.5	65
Tewkesbury	Ashchurch with Walton Cardiff	2.7	75
Tewkesbury	Innsworth with Down Hatherley	2.7	75
Tewkesbury	Churchdown St John's	2.9	80
Tewkesbury	Tewkesbury Newtown	3.0	85
Tewkesbury	Cleeve Grange	3.2	92
Tewkesbury	Shurdington	3.4	97
Tewkesbury	Cleeve St Michael's	3.6	104
Tewkesbury	Brockworth	3.8	108
Tewkesbury	Northway	3.8	108
Tewkesbury	Tewkesbury Town with Mitton	4.7	121
Tewkesbury	Tewkesbury Prior's Park	5.7	133



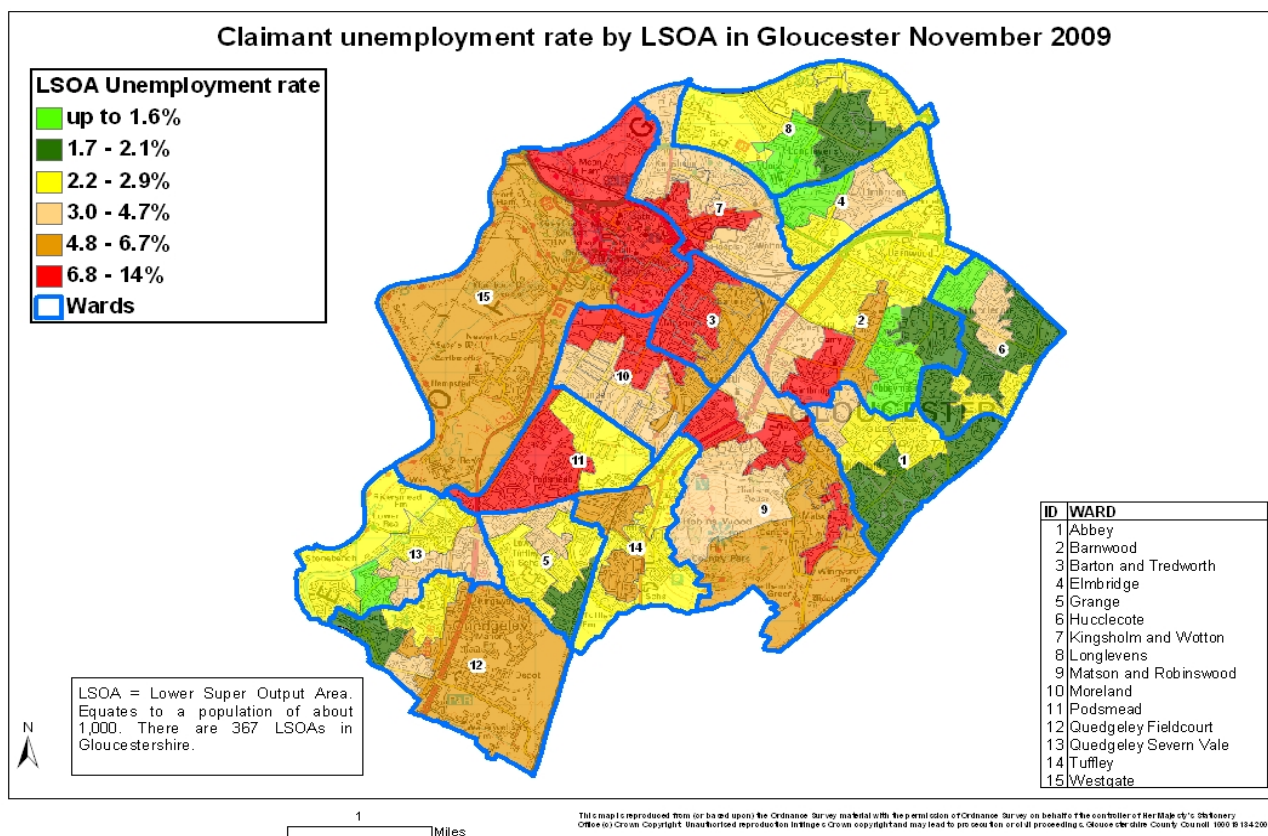
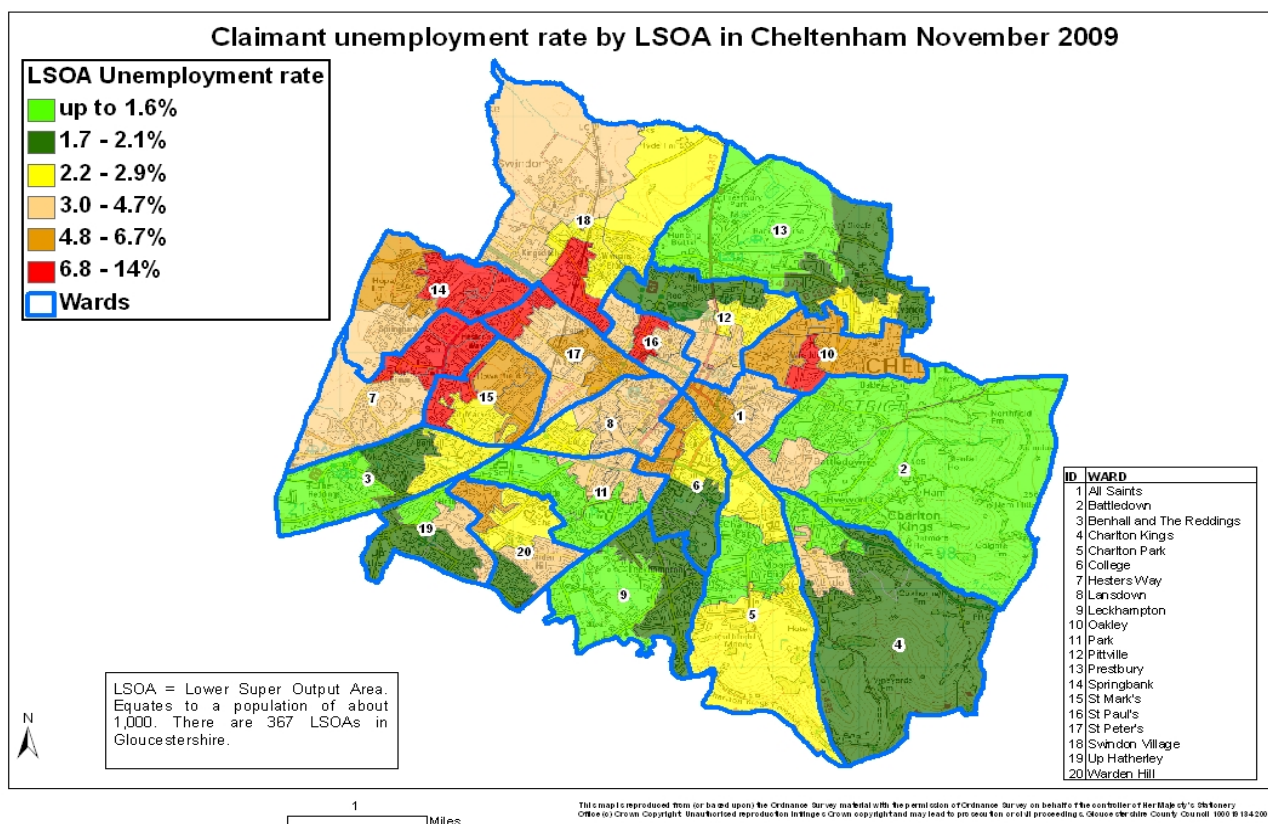
* 1 = "best" and 142 = "worst"

Table 10 shows overall claimant rates for Tewkesbury District wards and their position relative to all wards in Gloucestershire.

PART 5: MAP SHOWING DISTRIBUTION OF CLAIMANT RATE ACROSS GLOUCESTERSHIRE



PART 5: MAP SHOWING DISTRIBUTION OF CLAIMANT RATE ACROSS GLOUCESTERSHIRE



PART 6: YOUNG PEOPLE NOT IN EDUCATION, EMPLOYMENT OR TRAINING (NEET) IN GLOUCESTERSHIRE

Data provided by Prospects, the Connexions service in Gloucestershire on the situation of young people (16-18) in Gloucestershire who are not in education, employment or formal training.

Connexions Gloucestershire is required to report performance with the 16-18 age range against nationally defined criteria for counting the NEET group. The NEET group includes young people actively seeking education, employment or training as well as those young people who are either not yet ready or who are unable to access these opportunities because of their personal circumstances. The figures quoted below include young people in both of these categories.

Summary

As at the end of November 2009 there were 759 young people aged 16-18 not in education, employment or training in Gloucestershire and this figure translates into an adjusted (*) 16-18 NEET population of 4.3%. This figure evidences a 0.7% decrease from the performance achieved at the end of October 09 with all districts also showing a decrease in their numbers of 16-18 NEET young people. The largest decreases have been seen in Cheltenham/Gloucester and the Forest of Dean where the rates have decreased by 0.6% and 0.7% respectively. This is of particular significance as November is the first of the three consecutive months from which NEET performance is calculated to provide a measurement against this years LAA NEET target.

Total NEET Group by District Area 30th November 2009

	Cheltenham	Cotswold	Forest	Gloucester	Stroud	Tewkesbury	Total
NEET Group	167	70	90	221	131	80	759(*)
% NEET of total 16-18 cohort	5.5%	2.6%	3.2%	4.3%	4.1%	3.6%	4.3% (*)

Ready Steady Work

As part of our package of enhanced support for young people in the NEET group we have launched our Ready Steady Work employability programmes during November. These are aimed at young people who need some additional support, coaching and motivation to help them to enter further education, employment or training. Whilst they are on the programme young people will undertake an accredited qualification in job search as well as receive an individual action plan and intensive careers/personal support. Connexions personal advisers and Youth Workers are delivering the sessions and are providing 1:1 support to the young people taking part. The programmes are initially being delivered in Gloucester and Stroud with young people from other areas receiving support with travel costs to attend if required. We plan to spread these out to all districts from January 2010.

If you would like to receive any further information on Gloucestershire's NEET strategy then please contact Andrew.Webster@prospects.co.uk or telephone 01452 426900

(*) Adjustment includes a proportion of young people aged 16-18 whose outcomes are not-known to Connexions Gloucestershire