

Unemployment Bulletin

Issue 11 June 2009

Contents

Part 1: Summary

A summary of unemployment data at district, County, regional and national level

1

Part 2: County

Unemployment figures for the County compared to the South West and the rest of the UK

3

Part 3: Districts

A comparative break down of unemployment figures by district

4

Part 4: Wards

Further breakdown of unemployment figures by ward:

Cheltenham

6

Cotswolds

8

Forest of Dean

10

Gloucester

12

Stroud

14

Tewkesbury

16

Part 5: Map

Distribution of claimant rate across Gloucestershire

18

Part 6: Young People

Data about Young People Not in Education, Employment or Training (NEET)

20

INTRODUCTION

The Unemployment Bulletin provides a monthly update on unemployment data for Gloucestershire, the South West region and the United Kingdom. It is produced by the Economic section of the County Council Chief Executive's Support Unit Research Team. The data is sourced from the Office for National Statistics via Nomis (www.nomis.co.uk).

The claimant count measures the number of people claiming unemployment-related benefit (currently Job Seeker's allowance). The claimant rate is the number of claimants as a proportion of the working age population.

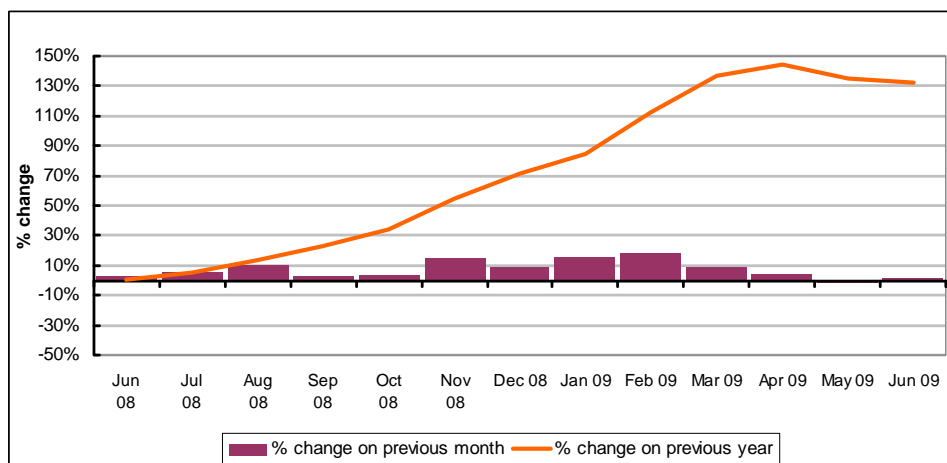
PART 1: SUMMARY

The claimant rate in Gloucestershire was 3.6% in June 2009. This was an increase of 0.1% on the May 2009 figure. The rate has increased again after falling slightly last month. The UK rate has remained the same at 4.1% between May and June 2009 with the South West rate decreasing 0.1% from last month to 3.0%. Gloucestershire's rate remains above the South West average of 3.0%, but 0.5% lower than the UK average of 4.1%.

The claimant count in Gloucestershire in June 2009 rose by 142 people. The amount of people claiming in June 2009 was 1.1% higher than the number in May 2009 compared to a 2.3% decrease in the South West and a 0.7% decrease for the UK.

The claimant count in Gloucestershire has increased again following last months decrease. The count was 133% higher in June 2009 than at the same point in the previous year as shown in the graph below.

Gloucestershire claimants - Month on Month and Year on Year change: June 2008 to June 2009



Source: ONS Crown Copyright Reserved

Produced by:

The Research Team (Economics)
Chief Executive Support Unit
Gloucestershire County Council
July 2009

DISTRICTS AT A GLANCE

At a glance unemployment information grouped by district. Includes:

Claim count: Total number of people claiming Job Seekers Allowance in June 2009

Compared to last month: How much larger/smaller June's claim count is compared to May, expressed as a %

Claimant rate: The % of working population claiming Job Seekers Allowance in June 2009

Highest claiming ward: The ward with the highest claim count in that district and the rate

CHELTENHAM BOROUGH

Claim count:	2,889
Compared to last month:	+1.6%
Claimant rate:	4.1%
Highest claiming ward	Hesters Way (8.7%)

GLOUCESTER CITY

Claim count:	3,352
Compared to last month:	+2.4%
Claimant rate:	4.7%
Highest claiming ward	Westgate (9.2%)

COTSWOLD DISTRICT

Claim count:	1,046
Compared to last month:	-2.0%
Claimant rate:	2.1%
Highest claiming ward	Cirencester Watermoor (4.7%)

STROUD DISTRICT

Claim count:	2,062
Compared to last month:	+0.9%
Claimant rate:	3.1%
Highest claiming ward	Central (7.5%)

FOREST OF DEAN

Claim count:	1,779
Compared to last month:	- 0.3%
Claimant rate:	3.6%
Highest claiming ward	Cinderford West (6.2%)

TEWKESBURY BOROUGH

Claim count:	1,494
Compared to last month:	+1.8%
Claimant rate:	3.2%
Highest claiming ward	Tewkesbury Priors Park (6.7%)

YOUNG PEOPLE NOT IN EDUCATION, EMPLOYMENT OR TRAINING (NEET)

As at the end of June 2009 there were 590 young people aged 16-18 not in education, employment or training in Gloucestershire and this figure translates into an adjusted (*) 16-18 NEET population of 4.3%.

PART 2: UK, SW AND GLOUCESTERSHIRE INDICATORS

The unemployment situation in Gloucestershire compared to the South West and the UK.

Claimant Rate

Figure 1: Claimant Rate for Gloucestershire, the South West and UK over the past year

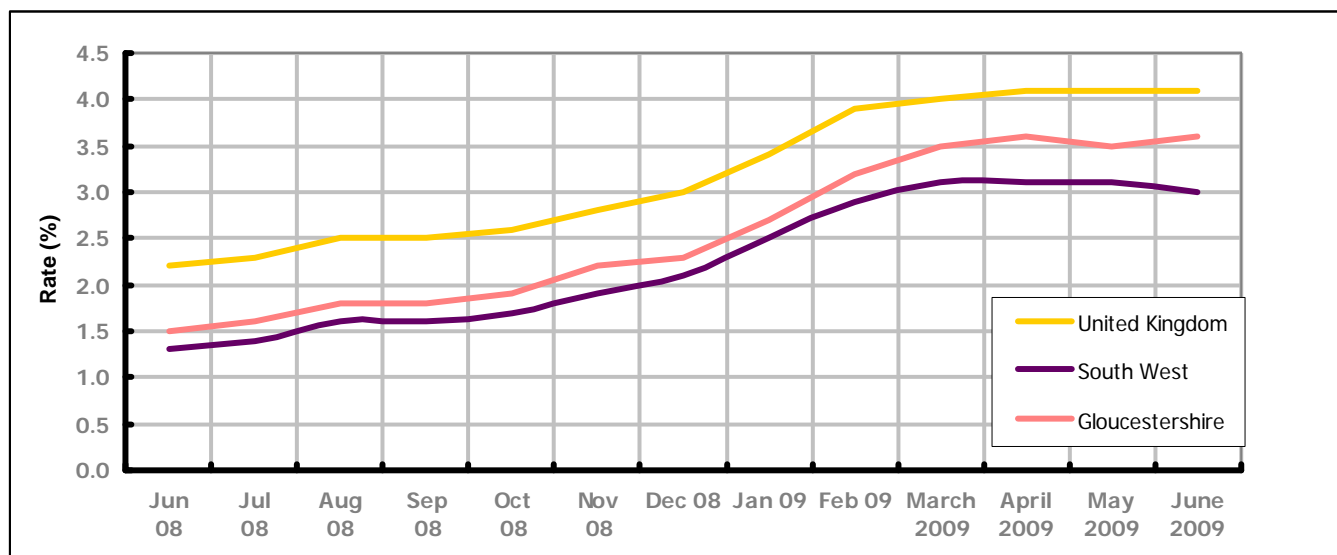


Figure 1 shows the claimant rate for Gloucestershire at 3.6% in June 2009. The rate has remained slightly higher than the South West average over the past year, but persistently lower by approximately 0.5% against the UK average during the same period. June 2009 represented a 0.1% increase on May 2009.

Claimant Count

Table 1: Analysis of UK, South West and Gloucestershire Claimant Counts

Area	Claimant Count in June 2009	% change on May 2009	Average % increase over the last six months	Consecutive months increasing
UK	1,553,256	-0.7%	+3.2%	0
South West	94,347	-2.3%	+3.5%	1
Gloucestershire	12,622	+1.1%	+4.9%	1

Table 1 shows that in June 2009, the number of claimants in Gloucestershire was 1.1% higher than the number in May 2009.

The average growth in claimants in Gloucestershire for the six months to June 2009 was 4.9%. This is 1.7% higher than the UK average and 1.4% higher than the South West region.

PART 3: LOCAL AUTHORITY DISTRICT ANALYSIS

Claimant Rate and Claimant Count

Figure 2: Claimant Rate (%) across Gloucestershire - June 2009

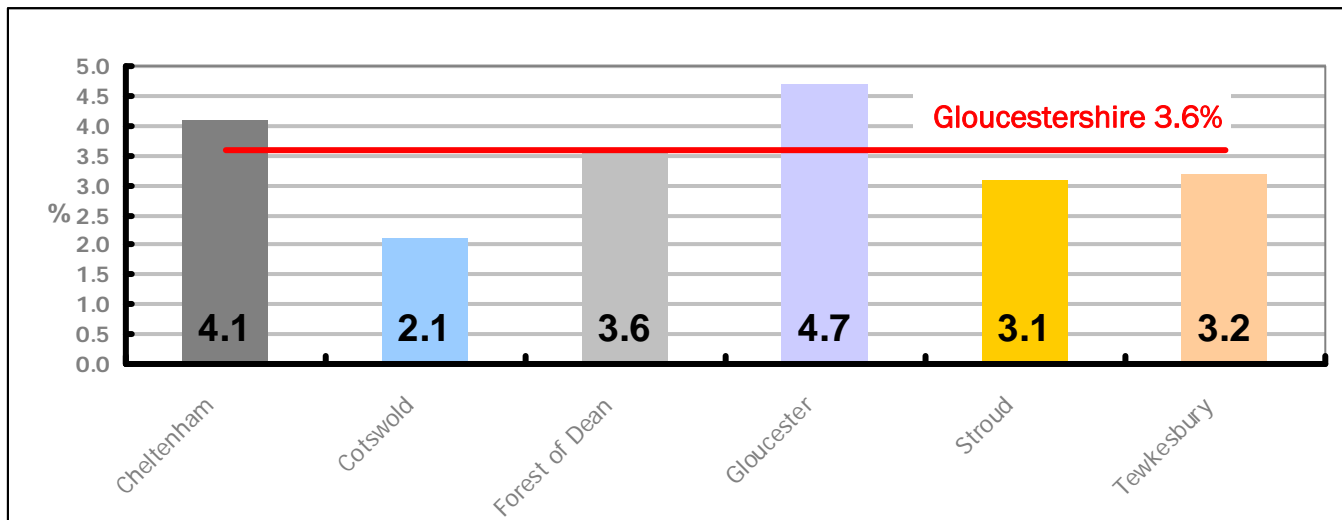


Figure 2 shows the claimant rate for June 2009 in Gloucestershire. Between May 2009 and June 2009, Cheltenham remained the same at 4.1%, Cotswold decreased by 0.1%, Forest of Dean decreased by 0.1%, Gloucester increased by 0.1%, Stroud remained the same at 3.1 and Tewkesbury increased by 0.1%.

Figure 3: Total claimants over the past year across Gloucestershire Districts

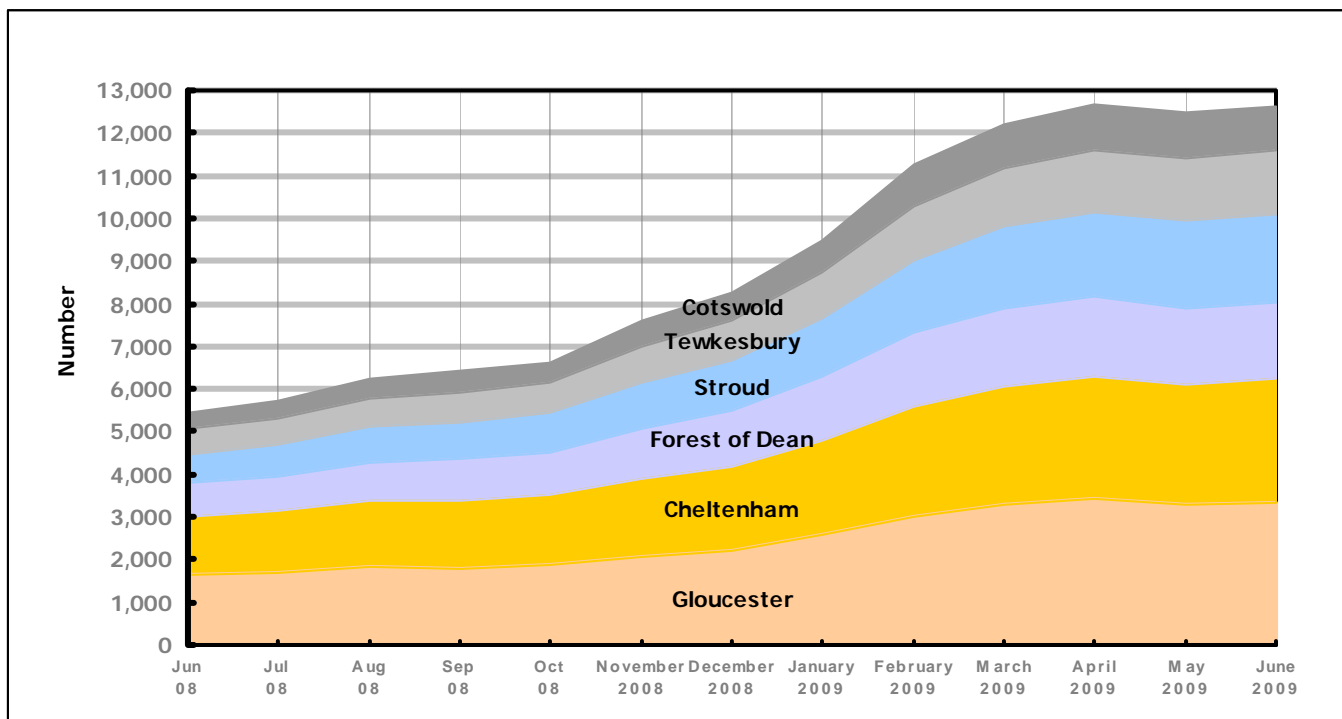


Figure 3 shows the overall claimant count by district for Gloucestershire over the past year. It demonstrates a noticeable levelling off since April 2009.

Table 2: Analysis of Gloucestershire and District Claimant Counts

Total	June 09 Number	June 09 Rate	May 09 Number	May 09 Rate	Monthly change	% monthly change	Monthly change of rate
Gloucestershire	12,622	3.6	12,480	3.5	142	1.1%	0.1
Cheltenham	2,889	4.1	2,844	4.1	45	1.6%	0.0
Cotswold	1,046	2.1	1,067	2.2	-21	-2.0%	-0.1
Forest of Dean	1,779	3.6	1,784	3.7	-5	-0.3%	-0.1
Gloucester	3,352	4.7	3,273	4.6	79	2.4%	0.1
Stroud	2,062	3.1	2,044	3.1	18	0.9%	0.0
Tewkesbury	1,494	3.2	1,468	3.1	26	1.8%	0.1

Table 2 shows the change in the claimant count in June 2009 compared to May 2009. Cotswold and Forest of Dean districts experienced a decrease while the remaining districts showed an increase.

Table 3: Analysis of Male Gloucestershire and District Claimant Counts

Male	June 09 Number	June 09 Rate	May 09 Number	May 09 Rate	Monthly change	% monthly change	Monthly change of rate
Gloucestershire	9,424	5.1	9,298	5.0	126	1.4%	0.1
Cheltenham	2,186	5.9	2,149	5.8	37	1.7%	0.1
Cotswold	759	3.0	782	3.0	-23	-2.9%	0.0
Forest of Dean	1,304	5.1	1,291	5.0	13	1.0%	0.1
Gloucester	2,578	7.0	2,502	6.8	76	3.0%	0.2
Stroud	1,526	4.4	1,517	4.4	9	0.6%	0.0
Tewkesbury	1,071	4.3	1,057	4.3	14	1.3%	0.0

Table 3 shows the change in the male claimant count in June 2009 compared to May 2009. Only Cotswold District experienced a decrease with all other districts increasing.

Table 4: Analysis of Female Gloucestershire and District Claimant Counts

Female	June 09 Number	June 09 Rate	May 09 Number	May 09 Rate	Monthly change	% monthly change	Monthly change of rate
Gloucestershire	3,198	1.9	3,182	1.9	16	0.5%	0.0
Cheltenham	703	2.1	695	2.1	8	1.2%	0.0
Cotswold	287	1.2	285	1.2	2	0.7%	0.0
Forest of Dean	475	2.1	493	2.1	-18	-3.7%	0.0
Gloucester	774	2.3	771	2.3	3	0.4%	0.0
Stroud	536	1.7	527	1.7	9	1.7%	0.0
Tewkesbury	423	1.9	411	1.8	12	2.9%	0.1

Table 4 shows the change in the female claimant count in June 2009 compared to May 2009. Only Forest of Dean District experienced a decrease with all other districts increasing.

PART 4: LOCAL AUTHORITY DISTRICT AND WARD ANALYSIS

This section covers the six districts and a comparison of their constituent wards.

4.1 Cheltenham Borough

Claimant Rate and Claimant Count

Figure 4: Cheltenham Borough claimant rate over the last year

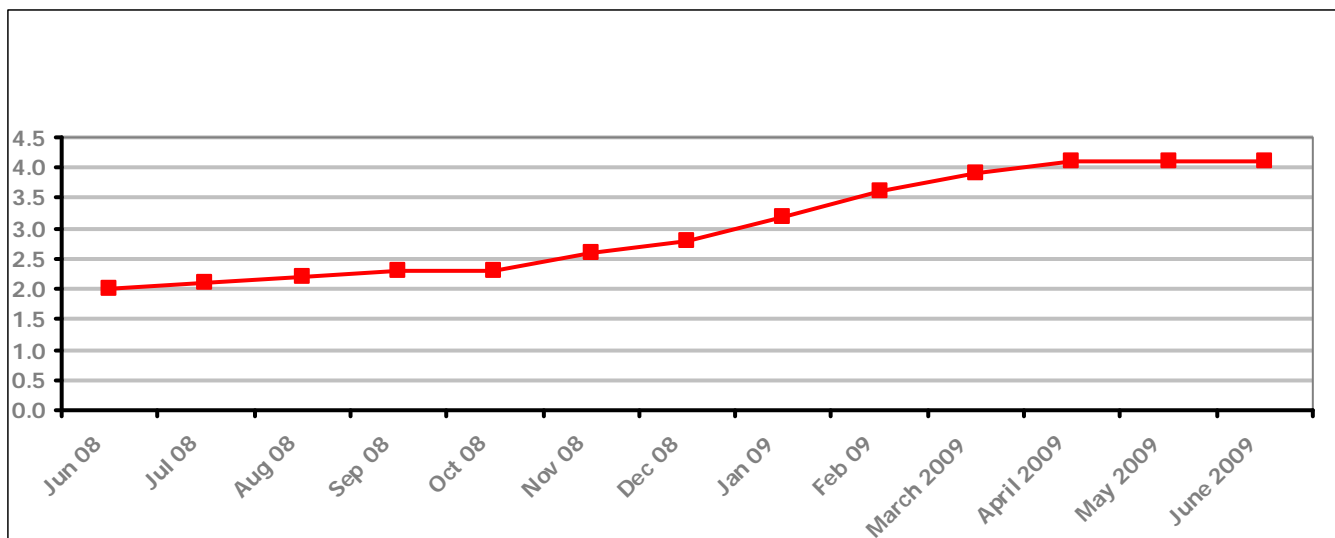


Figure 4 shows the claimant rate in Cheltenham remained the same as last month at 4.1%. The rate had been climbing for twelve consecutive months before levelling.

Figure 5: Cheltenham Borough claimants - Month on Month and Year on Year change

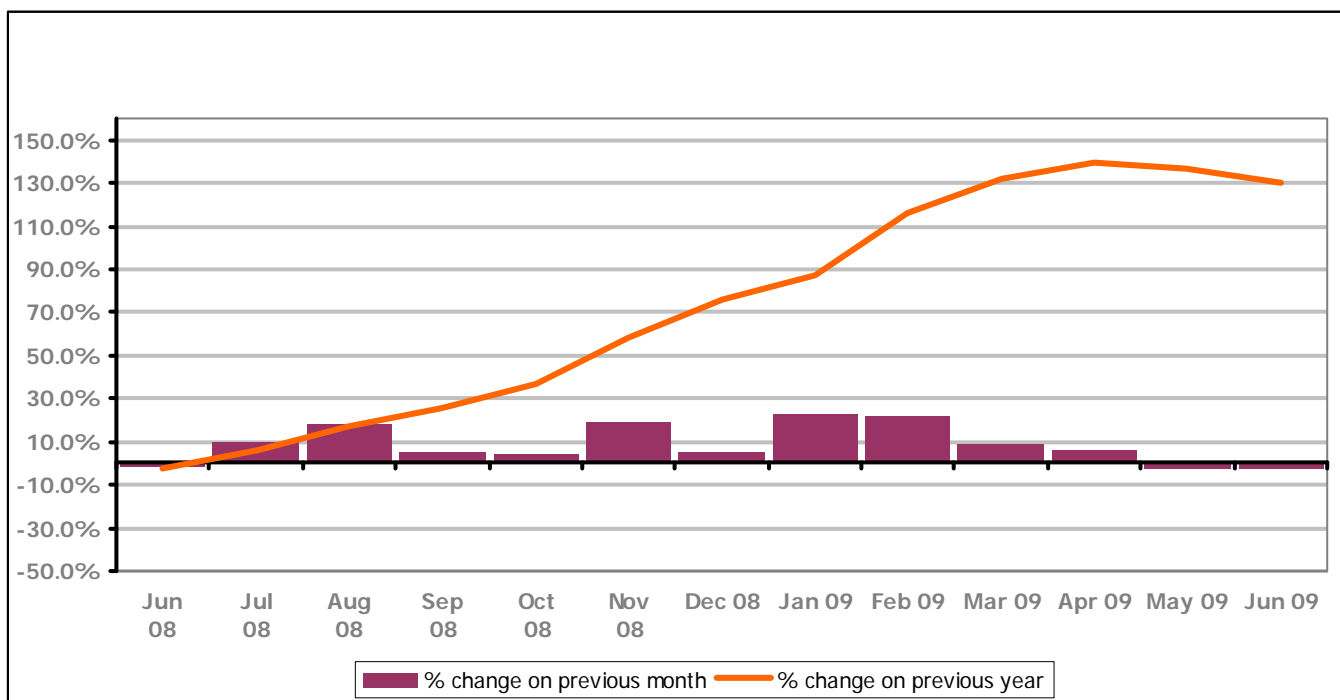


Figure 5 shows the claimant count decreasing in June 2009 similar to last month, after continually increasing each month since July 2008. In addition, the change on the previous year has gone down in June 2009 compared to May 2009.

PART 4: LOCAL AUTHORITY DISTRICT AND WARD ANALYSIS

4.1 Cheltenham Borough continued...

Figure 6: Claimant rates across Cheltenham Borough wards - June 2009

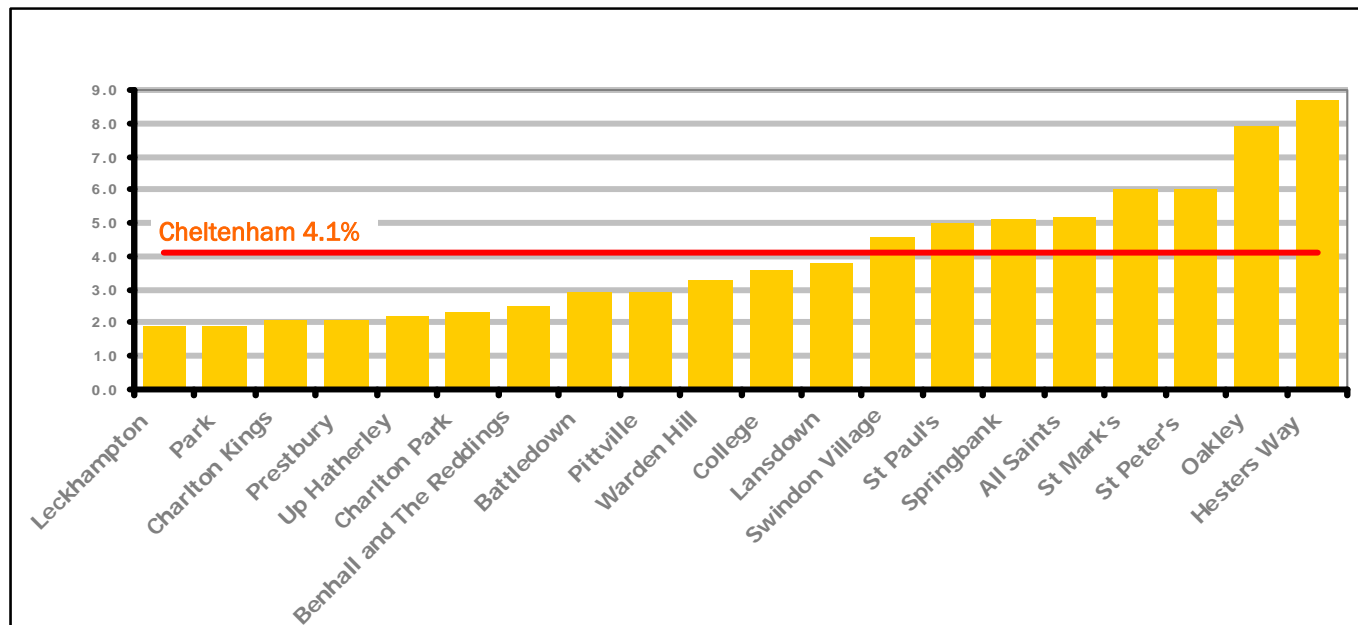


Figure 6 shows the claimant rates for Cheltenham Borough wards. The red line represents the average claimant rate across the Borough of 4.1%. Eight wards lie above the average.

Table 5: Analysis of Claimant Count at Cheltenham Borough ward level - June 2009

District	Ward	Rate	Rank*
Cheltenham	Leckhampton	1.9	20
Cheltenham	Park	1.9	20
Cheltenham	Charlton Kings	2.1	37
Cheltenham	Prestbury	2.1	37
Cheltenham	Up Hatherley	2.2	42
Cheltenham	Charlton Park	2.3	50
Cheltenham	Benhall and The Reddings	2.5	58
Cheltenham	Battledown	2.9	75
Cheltenham	Pittville	2.9	75
Cheltenham	Warden Hill	3.3	87
Cheltenham	College	3.6	94
Cheltenham	Lansdown	3.8	100
Cheltenham	Swindon Village	4.6	117
Cheltenham	St Paul's	5.0	122
Cheltenham	Springbank	5.1	123
Cheltenham	All Saints	5.2	124
Cheltenham	St Mark's	6.0	131
Cheltenham	St Peter's	6.0	131
Cheltenham	Oakley	7.9	140
Cheltenham	Hesters Way	8.7	141

bottom 10% of county
 first quartile of county
 second quartile of county
 third quartile of county
 fourth quartile of county
 highest 10% of county

* 1 = "best" and 142 = "worst"

Table 5 shows overall claimant rates for Cheltenham Borough wards and their position relative to all wards in Gloucestershire.

PART 4: LOCAL AUTHORITY DISTRICT AND WARD ANALYSIS

4.2 Cotswold District

Claimant Rate and Claimant Count

Figure 7: Cotswold District claimant rate over the last year

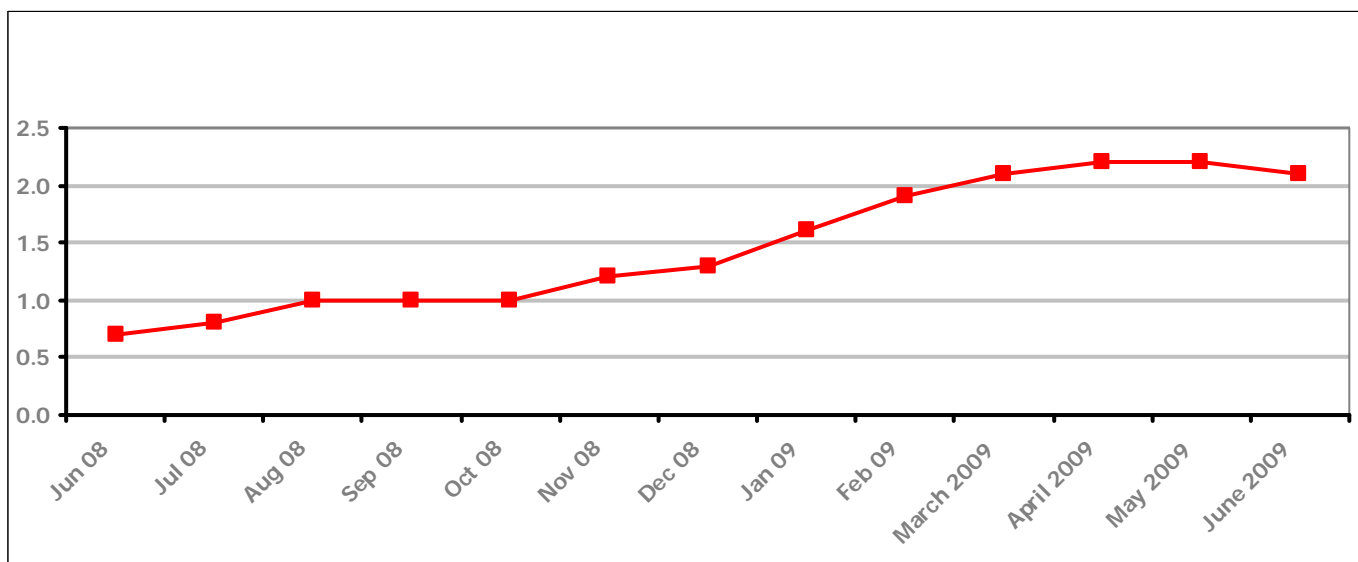


Figure 7 shows the claimant rate in Cotswold District decreased in June 2009 to 2.1%. Prior to this the rate had been increasing since June 2008.

Figure 8: Cotswold District claimants - Month on Month and Year on Year change

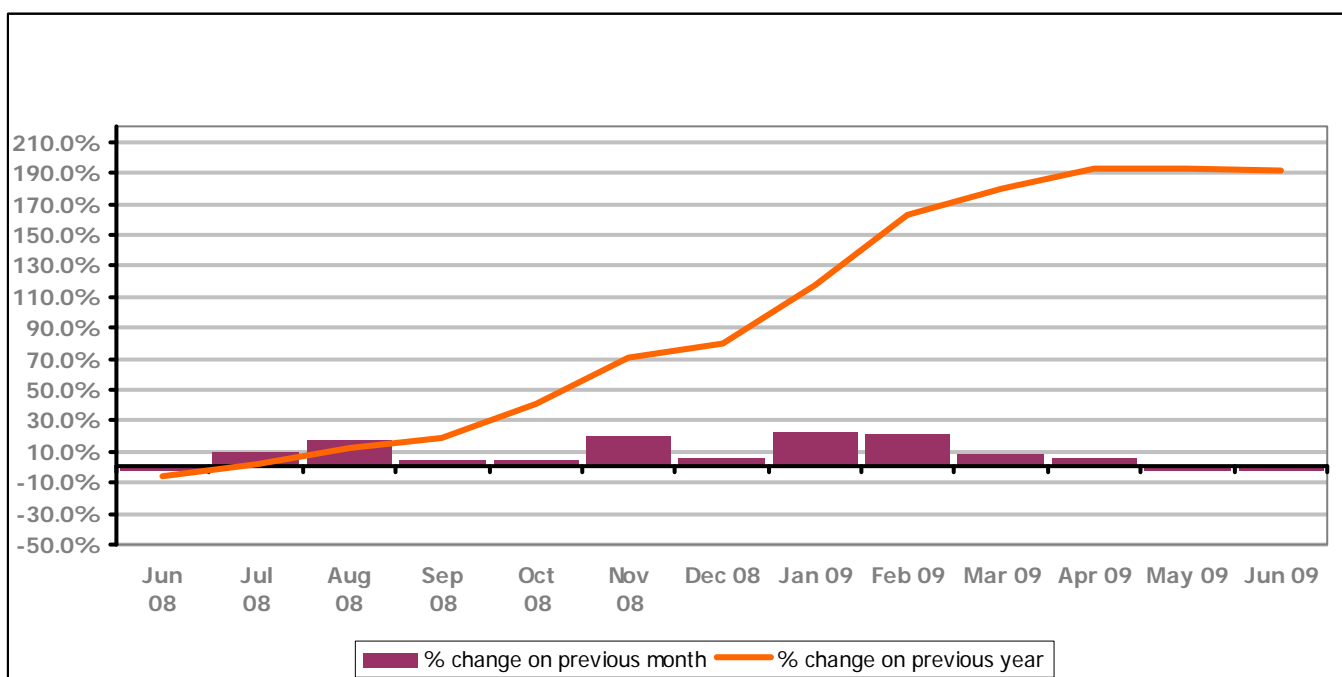


Figure 8 shows the claimant count decreasing in June 2009 similar to last month after continually increasing since July 2008. The change on the previous year has decreased slightly in June 2009 from May 2009.

PART 4: LOCAL AUTHORITY DISTRICT AND WARD ANALYSIS

4.2 Cotswold District continued...

Figure 9: Claimant rates across Cotswold District wards - June 2009

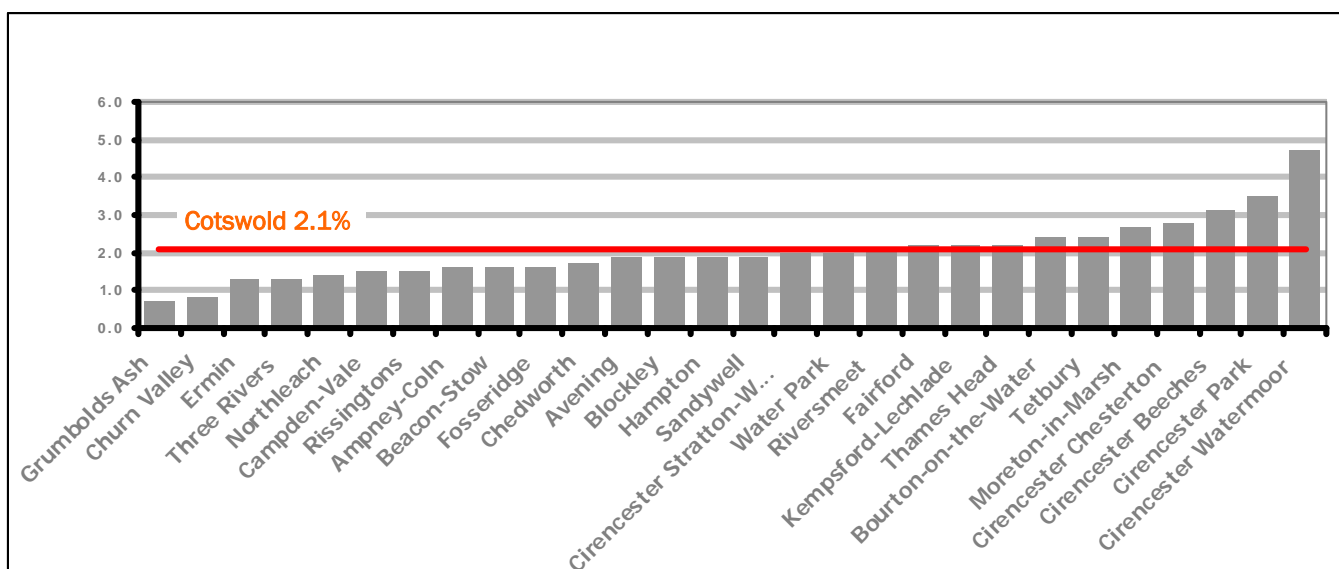
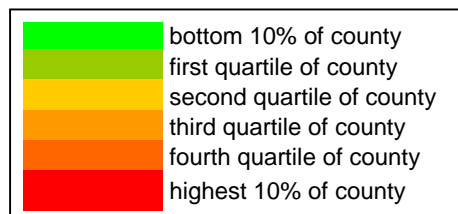


Figure 9 shows the claimant rates for Cotswold District wards. The red line represents the average claimant rate across the District of 2.1%. Ten wards lie above the average.

Table 6: Analysis of Claimant Count at Cotswold District ward level - June 2009

District	Ward	Rate	Rank*
Cotswolds	Grumbolds Ash	0.7	2
Cotswolds	Churn Valley	0.8	3
Cotswolds	Ermin	1.3	6
Cotswolds	Three Rivers	1.3	6
Cotswolds	Northleach	1.4	8
Cotswolds	Campden-Vale	1.5	10
Cotswolds	Risingtons	1.5	10
Cotswolds	Ampney-Coln	1.6	12
Cotswolds	Beacon-Stow	1.6	12
Cotswolds	Fosseridge	1.6	12
Cotswolds	Chedworth	1.7	16
Cotswolds	Avening	1.9	20
Cotswolds	Blockley	1.9	20
Cotswolds	Hampton	1.9	20
Cotswolds	Sandywell	1.9	20
Cotswolds	Cirencester Stratton-Whiteway	2.0	31
Cotswolds	Water Park	2.0	31
Cotswolds	Riversmeet	2.1	37
Cotswolds	Fairford	2.2	42
Cotswolds	Kempsford-Lechlade	2.2	42
Cotswolds	Thames Head	2.2	42
Cotswolds	Bourton-on-the-Water	2.4	53
Cotswolds	Tetbury	2.4	53
Cotswolds	Moreton-in-Marsh	2.7	67
Cotswolds	Cirencester Che sterton	2.8	71
Cotswolds	Cirencester Beeches	3.1	82
Cotswolds	Cirencester Park	3.5	91
Cotswolds	Cirencester Watermoor	4.7	118



* 1 = "best" and 142 = "worst"

Table 6 shows overall claimant rates for Cotswold District wards and their position relative to all wards in Gloucestershire.

PART 4: LOCAL AUTHORITY DISTRICT AND WARD ANALYSIS

4.3 Forest of Dean District

Claimant Rate and Claimant Count

Figure 10: Forest of Dean District claimant rate over the last year

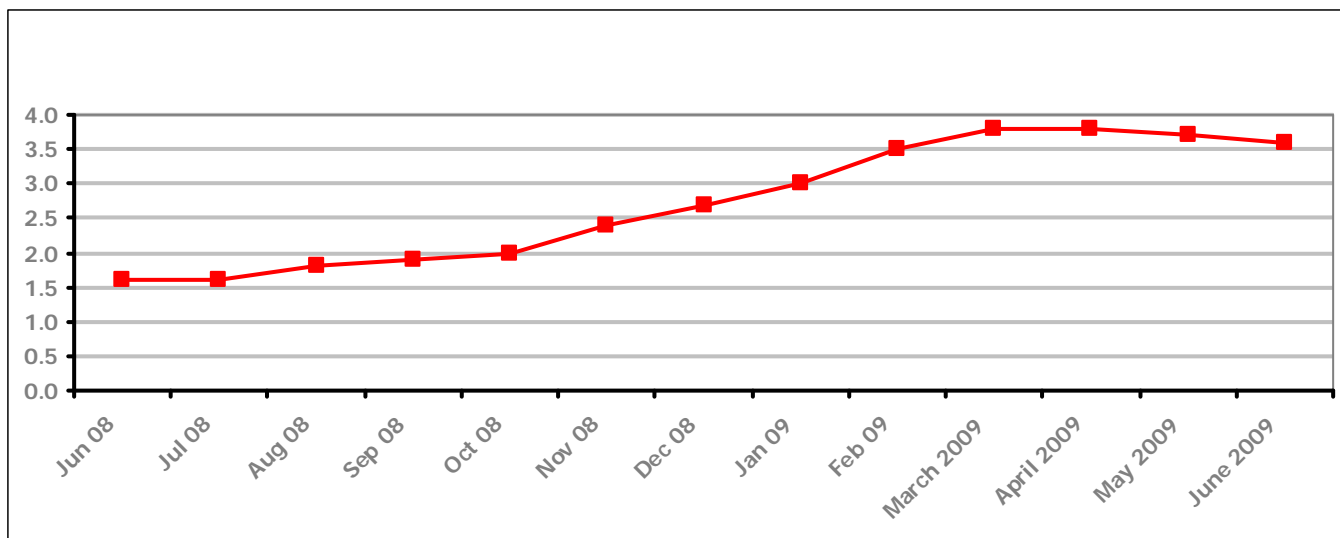


Figure 10 shows the claimant rate in the Forest of Dean decreased again in June 2009 to 3.6% similar to last month. Before this the rate had been increasing since July 2008.

Figure 11: Forest of Dean District claimants - Month on Month and Year on Year change

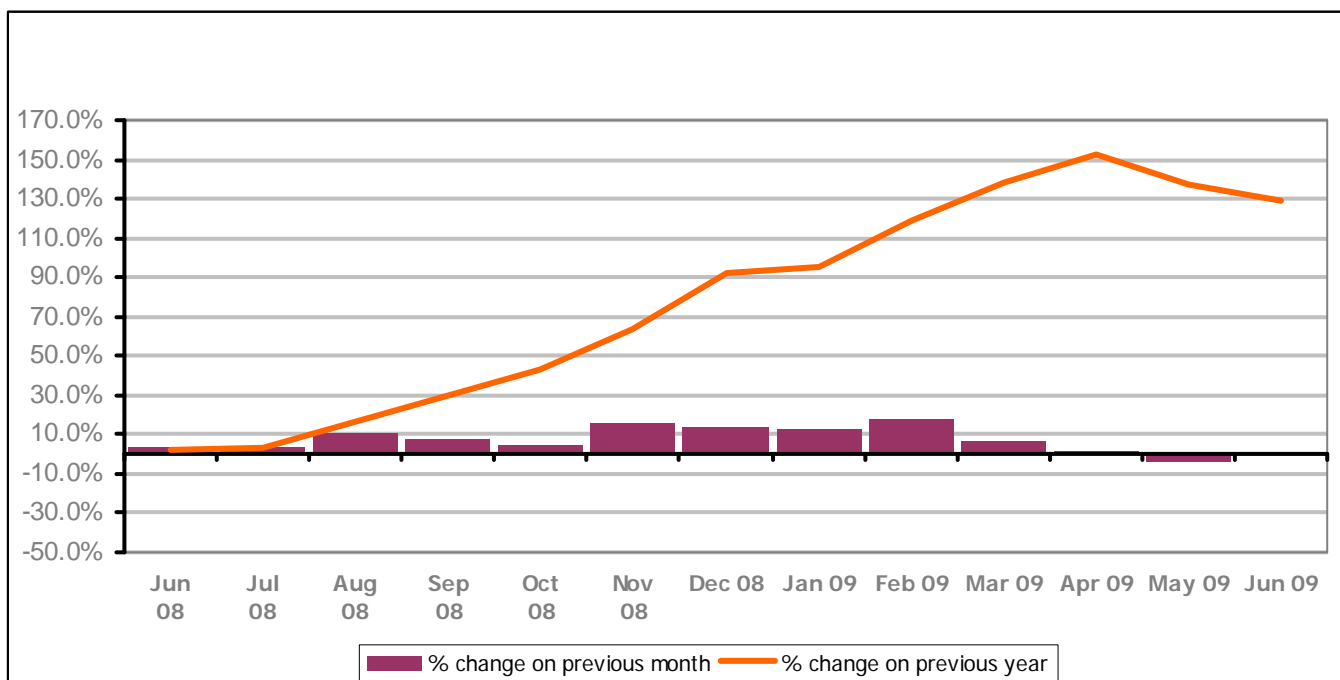


Figure 11 shows the claimant count remaining relatively steady in June 2009 decreasing the month before. The change on the previous year has decreased between June 2009 and May 2009.

PART 4: LOCAL AUTHORITY DISTRICT AND WARD ANALYSIS

4.3 Forest of Dean District continued...

Figure 12: Claimant rates across Forest of Dean District wards - June 2009

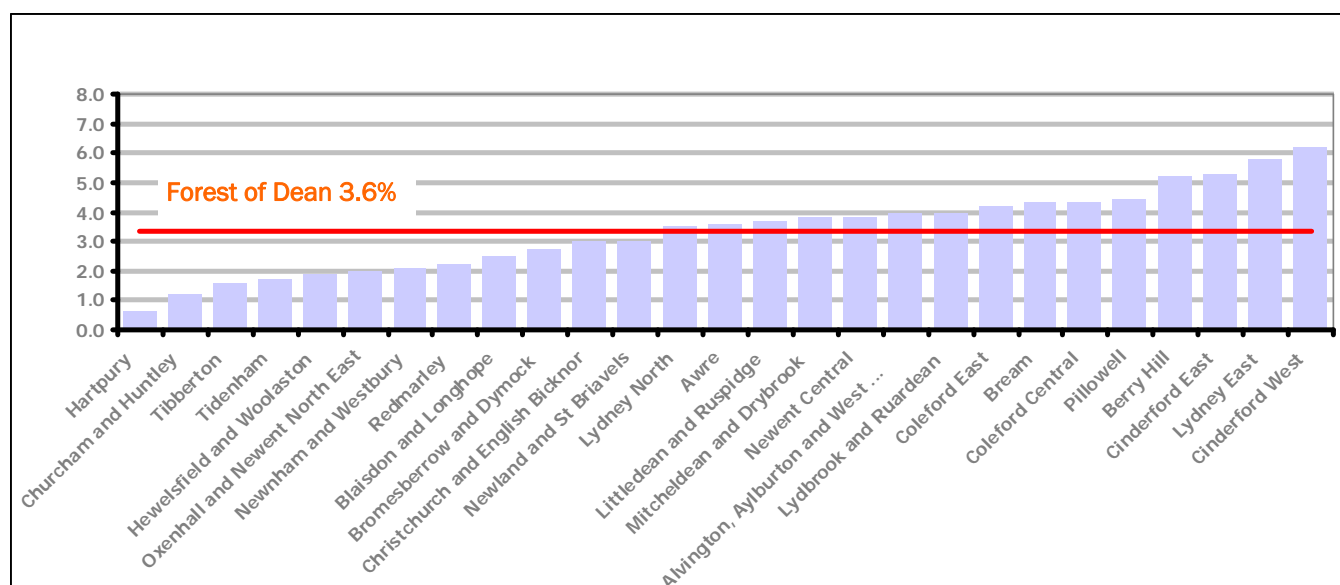


Figure 12 shows the claimant rates for Forest of Dean District wards. The red line represents the average claimant rate across the District of 3.6%. Thirteen wards lie above the average.

Table 7: Analysis of Claimant Count at Forest of Dean District ward level - June 2009

District	Ward	Rate	Rank*	
Forest	Hartpury	0.6	1	bottom 10% of county
Forest	Churcham and Huntley	1.2	5	first quartile of county
Forest	Tibberton	1.6	12	second quartile of county
Forest	Tidenham	1.7	16	third quartile of county
Forest	Hewelsfield and Woolaston	1.9	20	fourth quartile of county
Forest	Oxenhall and Newent North East	2.0	31	highest 10% of county
Forest	Newnham and Westbury	2.1	37	
Forest	Redmarley	2.2	42	
Forest	Blaisdon and Longhope	2.5	58	
Forest	Bromesberrow and Dymock	2.7	67	
Forest	Christchurch and English Bicknor	3.0	80	
Forest	Newland and St Briavels	3.0	80	
Forest	Lydney North	3.5	91	
Forest	Awre	3.6	94	
Forest	Littledean and Ruspidge	3.7	98	
Forest	Mitcheldean and Drybrook	3.8	100	
Forest	Newent Central	3.8	100	
Forest	Alvington, Aylburton and West Lydney	4.0	105	
Forest	Lydbrook and Ruardean	4.0	105	
Forest	Coleford East	4.2	108	
Forest	Bream	4.3	112	
Forest	Coleford Central	4.3	112	
Forest	Pillowell	4.4	114	
Forest	Berry Hill	5.2	124	
Forest	Cinderford East	5.3	126	
Forest	Lydney East	5.8	130	
Forest	Cinderford West	6.2	133	

* 1 = "best" and 142 = "worst"

Table 7 shows overall claimant rates for the Forest of Dean District wards and their position relative to all wards in Gloucestershire.

PART 4: LOCAL AUTHORITY DISTRICT AND WARD ANALYSIS

4.4 Gloucester City

Claimant Rate and Claimant Count

Figure 13: Gloucester City claimant rate over the last year

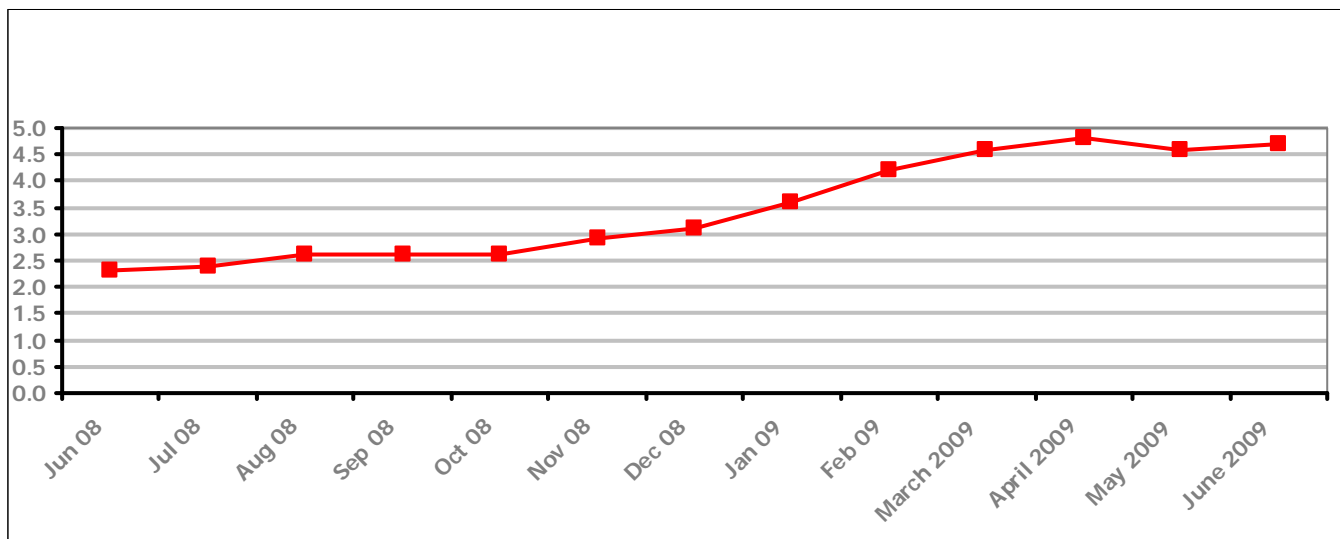


Figure 13 shows the claimant rate for Gloucester City increased in June 2009 to 4.7% after a decrease last month. The rate prior to this had been increasing since June 2008.

Figure 14: Gloucester City claimants - Month on Month and Year on Year change

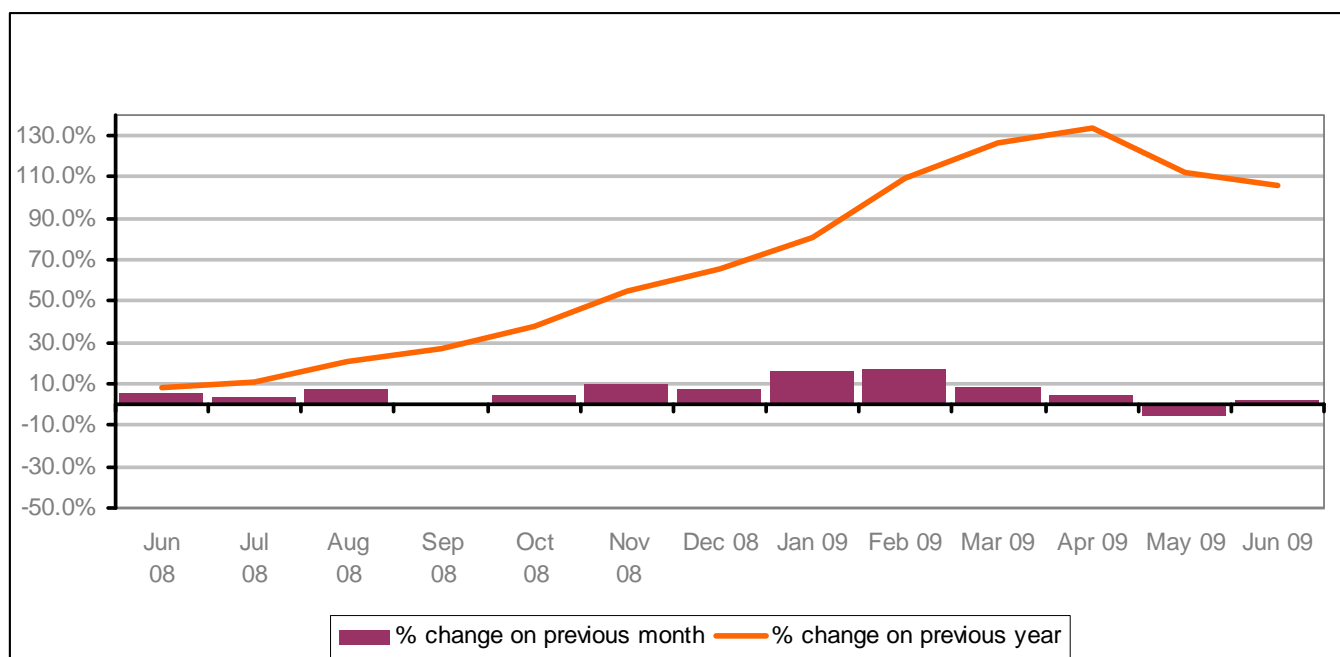


Figure 14 shows the monthly claimant count increasing in June 2009 by 2.4% after decreasing last month. Before this the rate continually increased since the previous June. The change on the previous year has decreased between May 2009 and June 2009.

PART 4: LOCAL AUTHORITY DISTRICT AND WARD ANALYSIS

4.4 Gloucester City continued...

Figure 15: Claimant rates across Gloucester City wards - June 2009

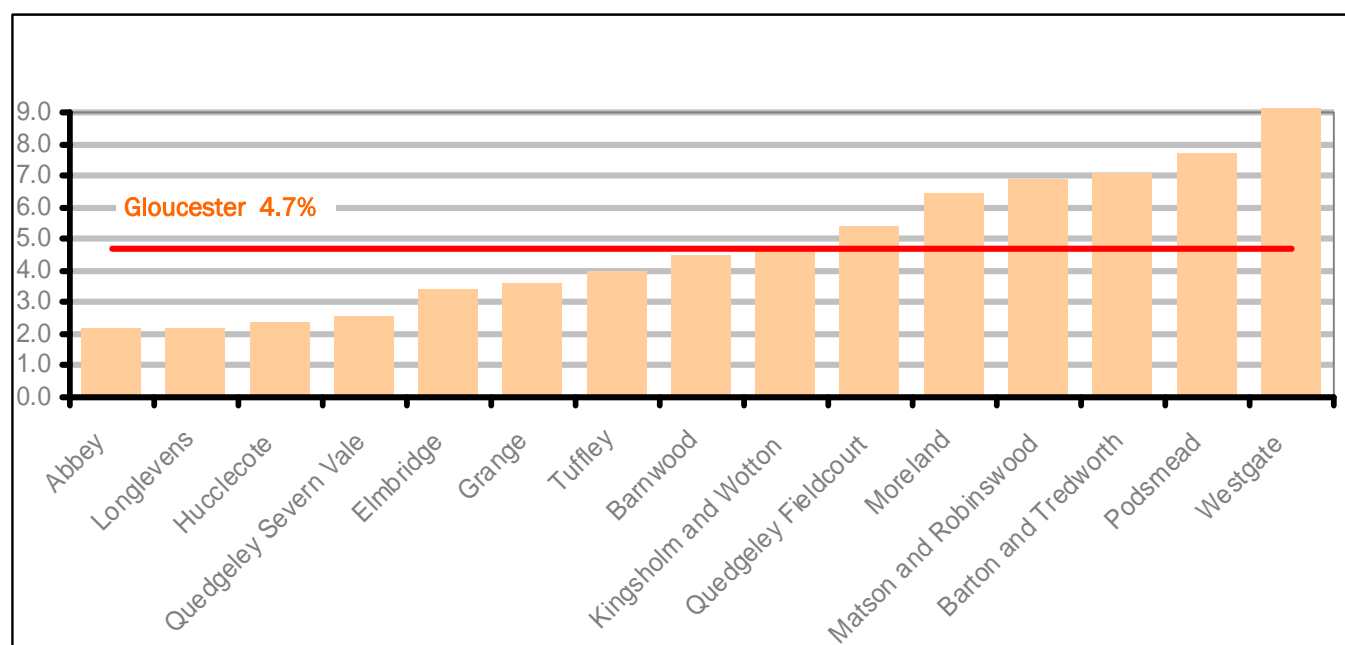


Figure 15 shows the claimant rates for Gloucester City district wards. The red line represents the average claimant rate across the City of 4.7%. Six wards lie above the average.

Table 8: Analysis of Claimant Count at Gloucester City ward level - June 2009

District	Ward	Rate	Rank*
Gloucester	Abbey	2.2	42
Gloucester	Longlevens	2.2	42
Gloucester	Hucclecote	2.4	53
Gloucester	Quedgeley Severn Vale	2.6	64
Gloucester	Elmbridge	3.4	90
Gloucester	Grange	3.6	94
Gloucester	Tuffley	4.0	105
Gloucester	Barnwood	4.5	115
Gloucester	Kingsholm and Wotton	4.7	118
Gloucester	Quedgeley Fieldcourt	5.4	127
Gloucester	Moreland	6.4	134
Gloucester	Matson and Robinswood	6.9	136
Gloucester	Barton and Tredworth	7.1	137
Gloucester	Podsmead	7.7	139
Gloucester	Westgate	9.2	142

bottom 10% of county
 first quartile of county
 second quartile of county
 third quartile of county
 fourth quartile of county
 highest 10% of county

* 1 = "best" and 142 = "worst"

Table 8 shows overall claimant rates for Gloucester City wards and their position relative to all wards in Gloucestershire.

PART 4: LOCAL AUTHORITY DISTRICT AND WARD ANALYSIS

4.5 Stroud District

Claimant Rate and Claimant Count

Figure 16: Stroud District claimant rate over the last year

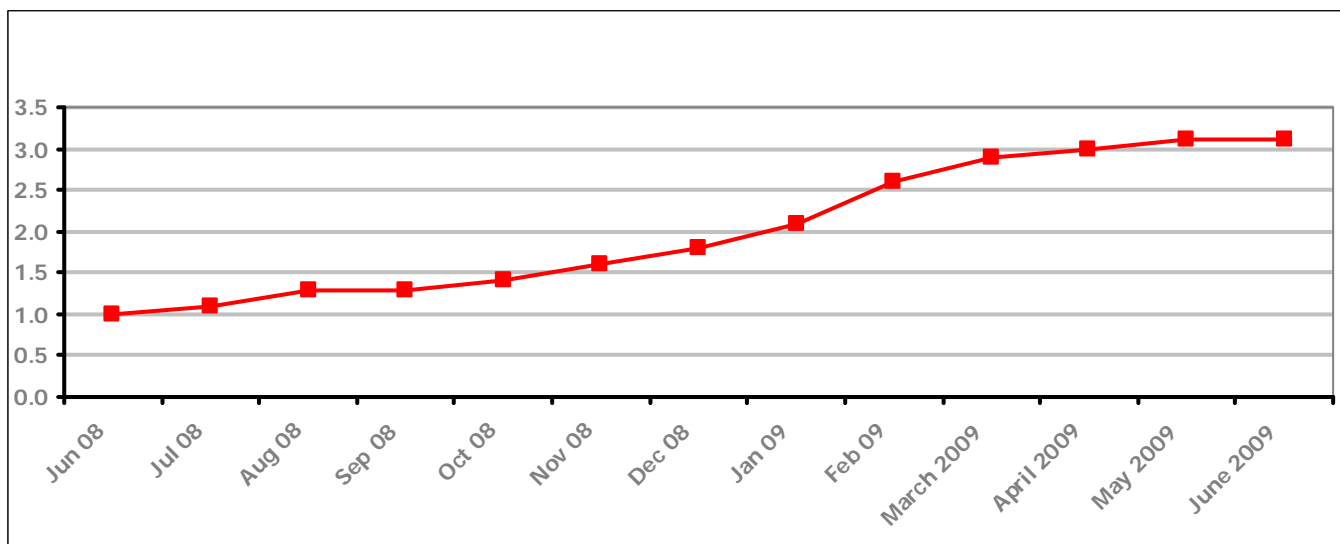


Figure 16 shows the claimant rate for Stroud District remained the same at 3.1%, the highest it has been for over two years.

Figure 17: Stroud District claimants - Month on Month and Year on Year change

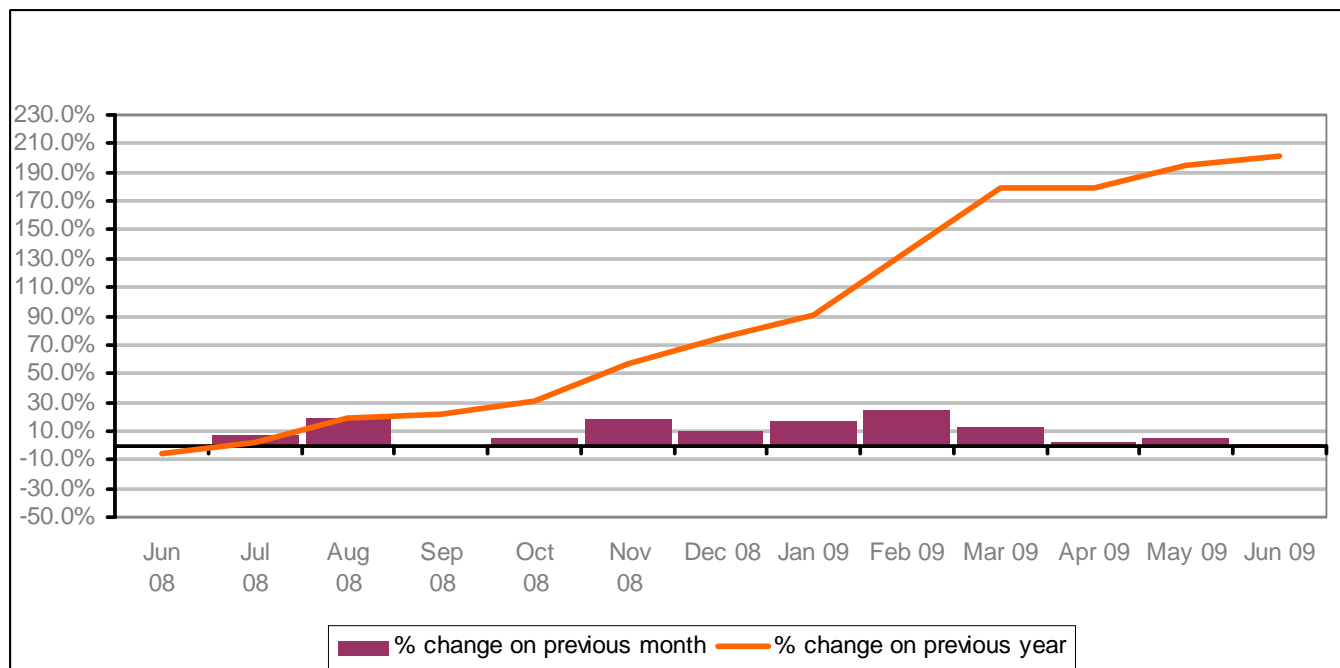


Figure 17 shows that when compared to the same month in the previous year, the claimant count has been increasing since July 2008. The June 2009 figure was 201% higher than it was in June 2008.

PART 4: LOCAL AUTHORITY AND DISTRICT ANALYSIS

4.5 Stroud District continued...

Figure 18: Claimant rates across Stroud District wards - June 2009

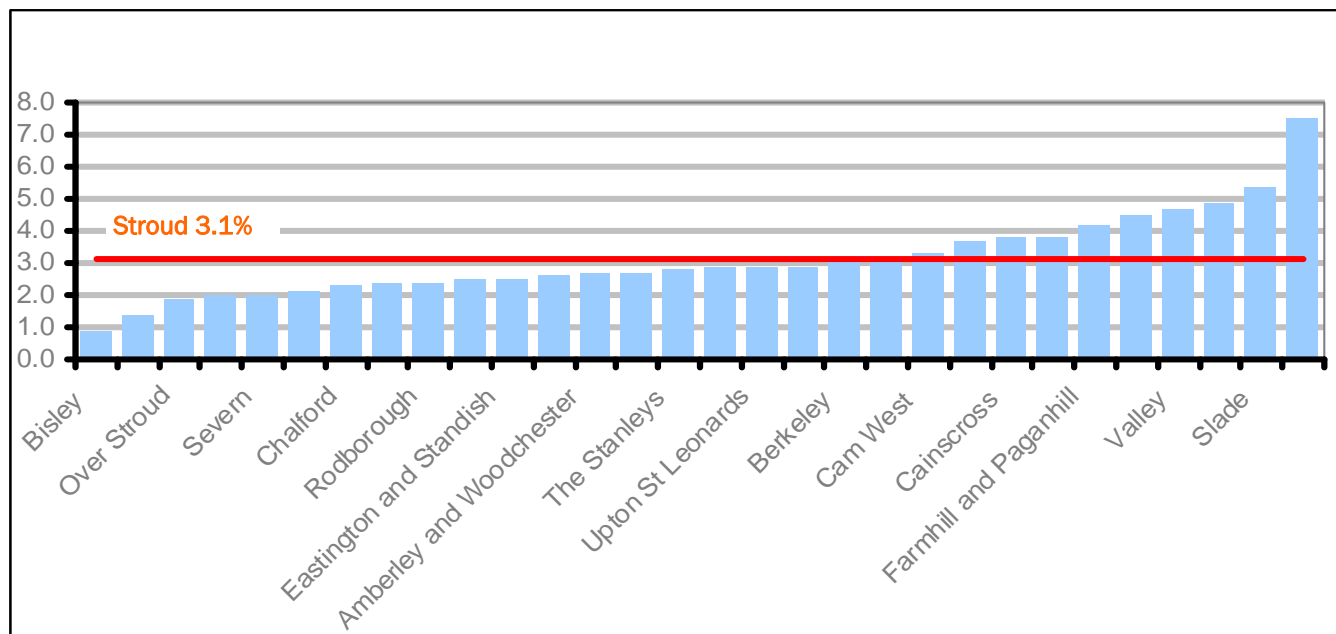
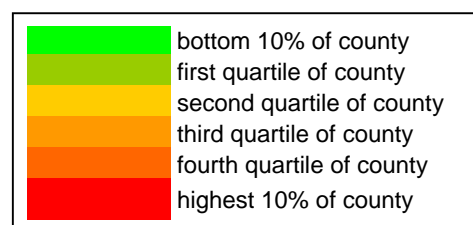


Figure 18 shows the claimant rates in Stroud District wards. The red line represents the average claimant rate across the District of 3.1% and twelve wards are above the average.

Table 9: Analysis of Claimant Count at Stroud District ward level - June 2009

District	Ward	Rate	Rank*
Stroud	Bisley	0.9	4
Stroud	Painswick	1.4	8
Stroud	Over Stroud	1.9	20
Stroud	Kingswood	2.0	31
Stroud	Severn	2.0	31
Stroud	Thrupp	2.1	37
Stroud	Chalford	2.3	50
Stroud	Hardwicke	2.4	53
Stroud	Rodborough	2.4	53
Stroud	Coaley and Uley	2.5	58
Stroud	Eastington and Standish	2.5	58
Stroud	Cam East	2.6	64
Stroud	Amberley and Woodchester	2.7	67
Stroud	Vale	2.7	67
Stroud	The Stanleys	2.8	71
Stroud	Minchinhampton	2.9	75
Stroud	Upton St Leonards	2.9	75
Stroud	Wotton-under-Edge	2.9	75
Stroud	Berkeley	3.2	84
Stroud	Nailsworth	3.2	84
Stroud	Cam West	3.3	87
Stroud	Uplands	3.7	98
Stroud	Cainscross	3.8	100
Stroud	Stonehouse	3.8	100
Stroud	Farmhill and Paganhill	4.2	108
Stroud	Trinity	4.5	115
Stroud	Valley	4.7	118
Stroud	Dursley	4.9	121
Stroud	Slade	5.4	127
Stroud	Central	7.5	138



* 1 = "best" and 142 = "worst"

Table 9 shows overall claimant rates for Stroud District wards and their position relative to all wards in Gloucestershire.

PART 4: LOCAL AUTHORITY DISTRICT AND WARD ANALYSIS

4.6 Tewkesbury District

Claimant Rate and Claimant Count

Figure 19: Tewkesbury District claimant rate over the last year

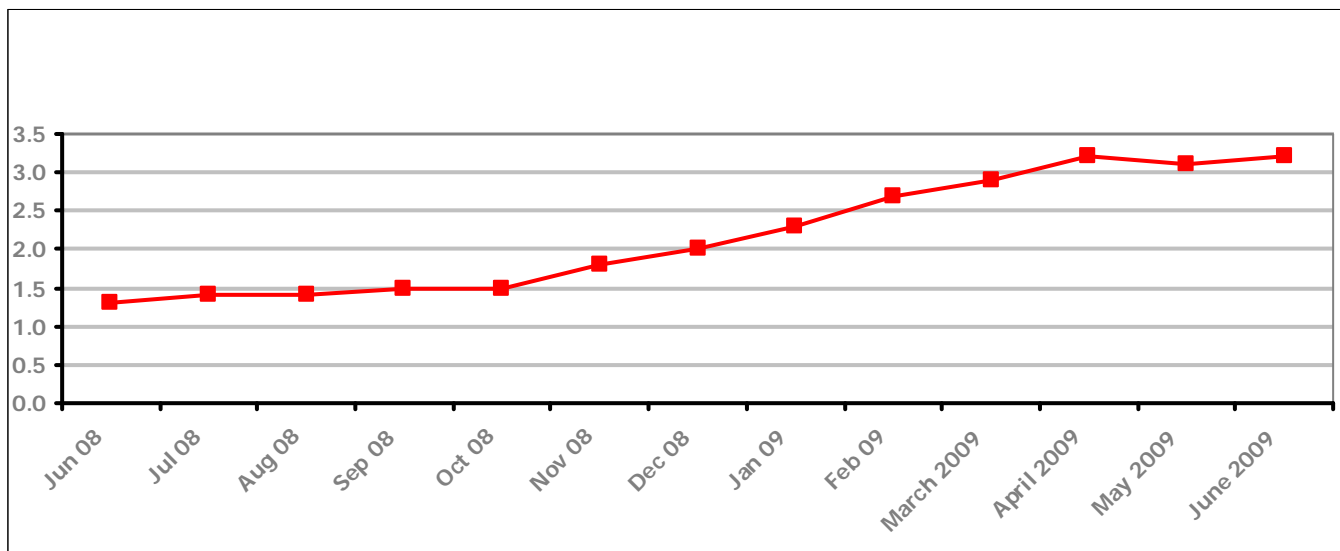


Figure 19 shows the claimant rate for Tewkesbury District increased to 3.2% in June 2009 after a decrease last month, before this it had been rising for over a year.

Figure 20: Tewkesbury District claimants - Month on Month and Year on Year change

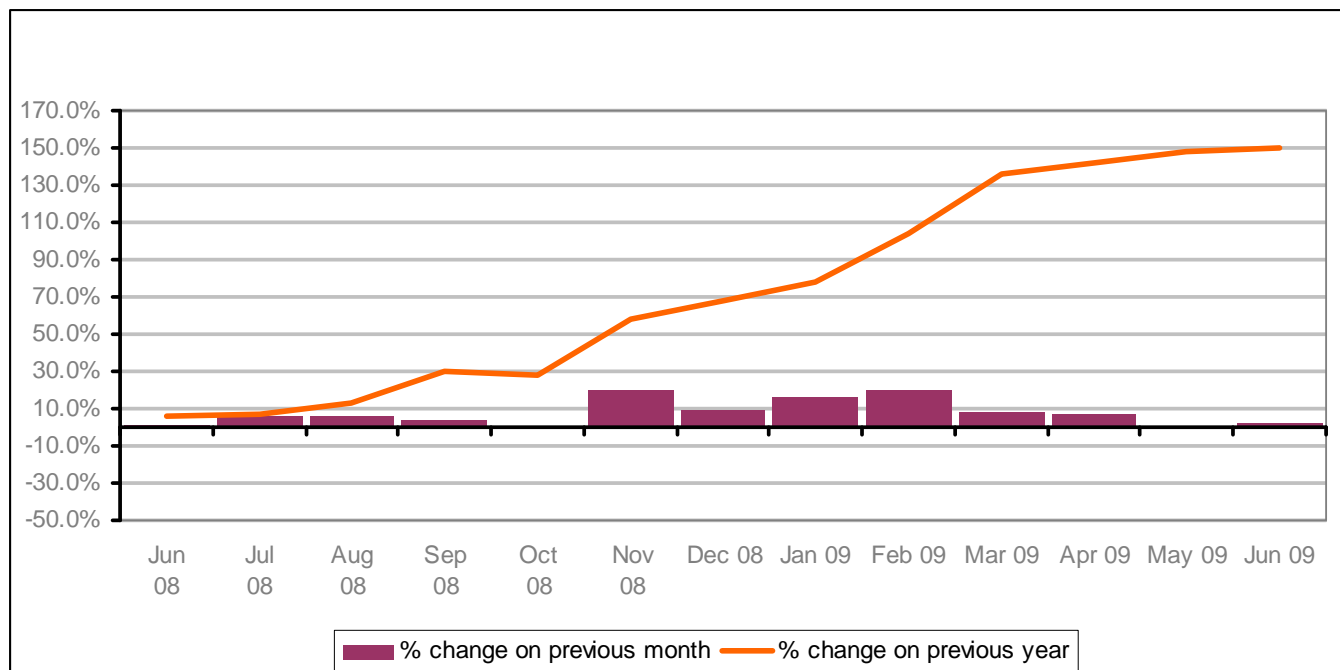


Figure 20 shows that claimant count increased in June 2009 by 1.8% after decreasing last month. The rate in June 2009 figure was 150% higher than it was in June 2008.

PART 4: LOCAL AUTHORITY AND DISTRICT ANALYSIS

4.6 Tewkesbury District continued...

Figure 21: Claimant rates across Tewkesbury District wards - June 2009

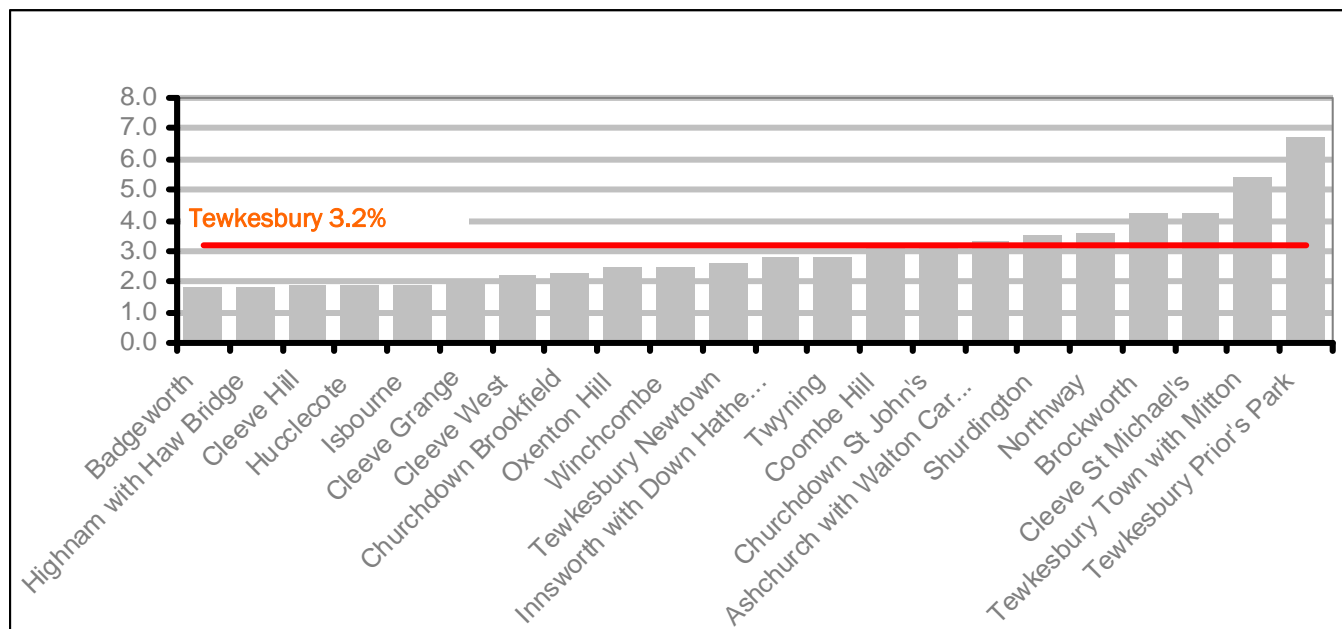
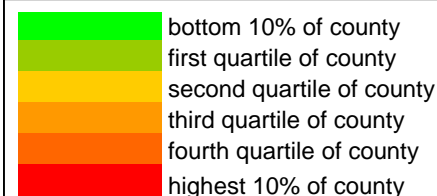


Figure 21 shows the claimant rates in Tewkesbury District wards. The red line represents the average claimant rate across the District of 3.2% and seven wards are above the average.

Table 10: Analysis of Claimant Count at Tewkesbury District level - June 2009

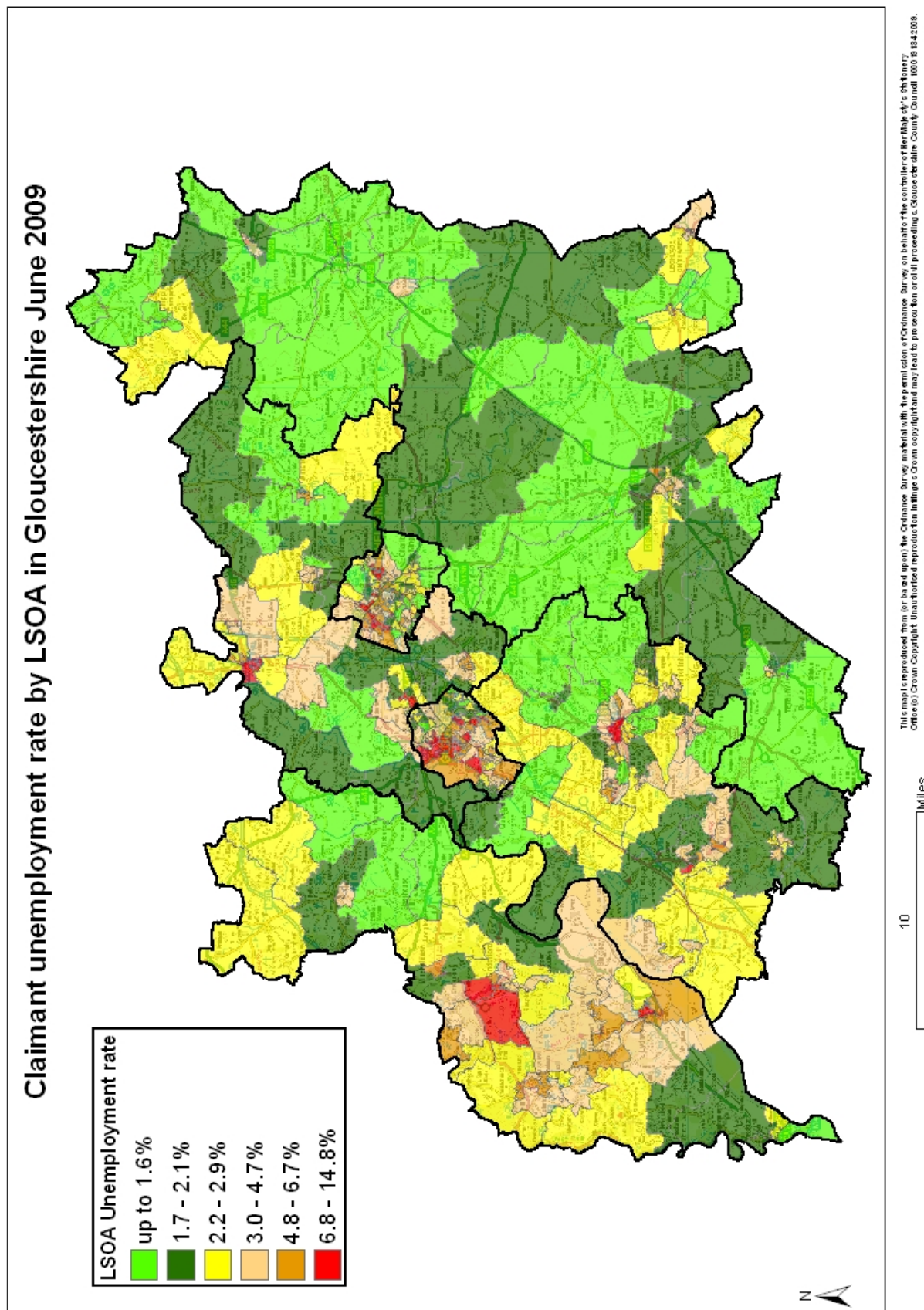
District	Ward	Rate	Rank*
Tewkesbury	Badgeworth	1.8	18
Tewkesbury	Highnam with Haw Bridge	1.8	18
Tewkesbury	Cleeve Hill	1.9	20
Tewkesbury	Hucclecote	1.9	20
Tewkesbury	Isbourne	1.9	20
Tewkesbury	Cleeve Grange	2.0	31
Tewkesbury	Cleeve West	2.2	42
Tewkesbury	Churchdown Brookfield	2.3	50
Tewkesbury	Oxenton Hill	2.5	58
Tewkesbury	Winchcombe	2.5	58
Tewkesbury	Tewkesbury Newtown	2.6	64
Tewkesbury	Innsworth with Down Hatherley	2.8	71
Tewkesbury	Twynning	2.8	71
Tewkesbury	Coombe Hill	3.1	82
Tewkesbury	Churchdown St John's	3.2	84
Tewkesbury	Ashchurch with Walton Cardiff	3.3	87
Tewkesbury	Shurdington	3.5	91
Tewkesbury	Northway	3.6	94
Tewkesbury	Brockworth	4.2	108
Tewkesbury	Cleeve St Michael's	4.2	108
Tewkesbury	Tewkesbury Town with Mitton	5.4	127
Tewkesbury	Tewkesbury Prior's Park	6.7	135



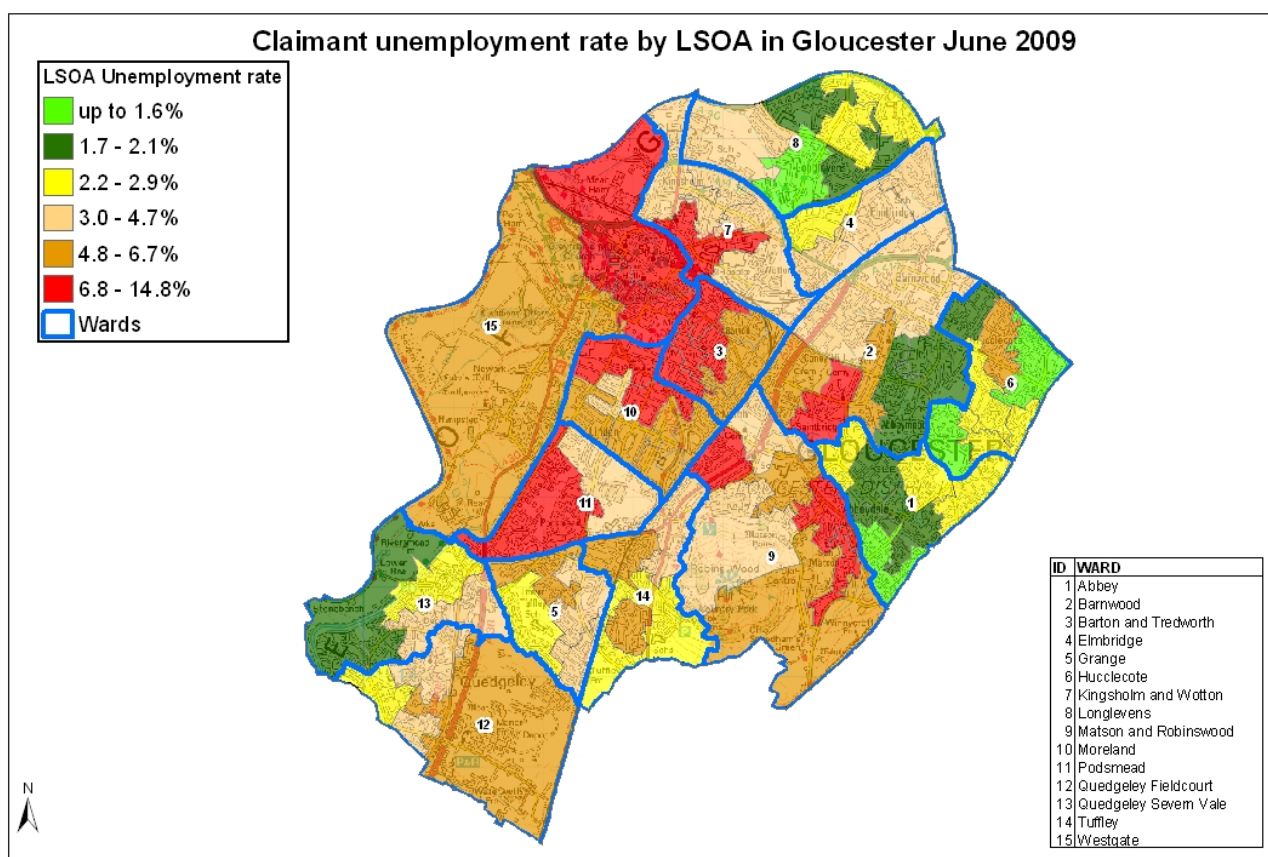
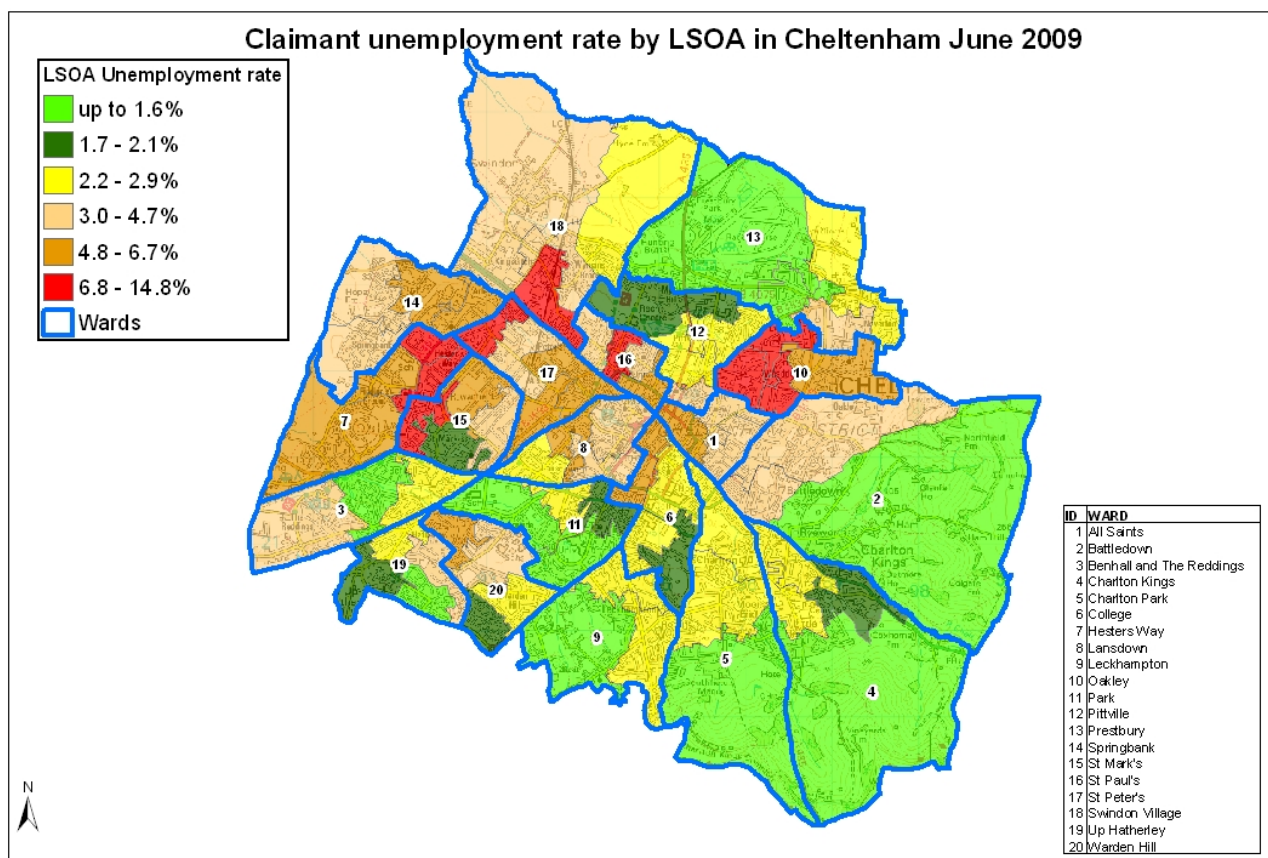
* 1 = "best" and 142 = "worst"

Table 10 shows overall claimant rates for Tewkesbury District wards and their position relative to all wards in Gloucestershire.

PART 5: MAP SHOWING DISTRIBUTION OF CLAIMANT RATE ACROSS GLOUCESTERSHIRE



PART 5: MAP SHOWING DISTRIBUTION OF CLAIMANT RATE ACROSS GLOUCESTERSHIRE



PART 6: YOUNG PEOPLE NOT IN EDUCATION, EMPLOYMENT OR TRAINING (NEET) IN GLOUCESTERSHIRE

Data provided by Prospects, the Connexions service in Gloucestershire on the situation of young people (16-18) in Gloucestershire who are not in education, employment or formal training.

Connexions Gloucestershire is required to report performance with the 16-18 age range against nationally defined criteria for counting the NEET group. The NEET group includes young people actively seeking education, employment or training as well as those young people who are either not yet ready or who are unable to access these opportunities because of their personal circumstances. The figures quoted below include young people in both of these categories.

SUMMARY

As at the end of June 2009 there were 590 young people aged 16-18 not in education, employment or training in Gloucestershire and this figure translates into an adjusted (*) 16-18 NEET population of 4.3%. This figure maintains the performance achieved at the end of May 09 with most districts NEET population remaining static. One notable exception is Cheltenham where we evidenced a sharp decrease (down from 6.9% May). We are now hoping to see this positive performance continue into July and August and are working closely with partners to identify, target and support 'potential' NEETs from this years school leavers.

Total NEET Group by District Area 30th June 2009

	Cheltenham	Cotswold	Forest	Gloucester	Stroud	Tewkesbury	Total
NEET Group	131	57	78	162	109	53	590(*)
% NEET of total 16-18 cohort	5.9%	2.6%	3.3	3.6%	4.2%	3.0%	4.3%(*)

Targeted support for young people affected by the recession

We are working closely with the GCC recession support coordinator to ensure that young people benefit from the support systems which have been established in response to the recession. In conjunction with this we are in regular contact with colleagues within the Learning and Skills Council (LSC) to advocate for young people who have been made redundant from apprenticeship programmes. Along with partner agencies we are concerned about a potential 'spike' in our NEET population during September and October and are closely tracking and supporting young people identified as being 'at risk' of not making a positive transition into education or training.

September Guarantee

The September Guarantee is an offer of education or training for all 16 and 17 year olds and is a national initiative designed to galvanise support for school leavers. Work is well underway to ensure that Gloucestershire meets its obligations and to date approx 90% of our 2009 Year 11 leavers have received an offer of education/training for Sept 2009. Those young people remaining without an offer are also being tracked and supported to ensure they receive their entitlement and this work continues over the summer months.

If you would like to receive any further information on Gloucestershire's NEET strategy then please contact Andrew.Webster@prospects.co.uk or telephone 01452 426900

(*) Adjustment includes a proportion of young people aged 16-18 whose outcomes are not-known to Connexions Gloucestershire