

Unemployment Bulletin

Issue 93 April 2016

Contents

Part 1: Summary	1
A summary of unemployment data at district, County, regional and national level	
Part 2: County	3
Unemployment figures for the County compared to the South West and the rest of the UK	
Part 3: Districts	4
A comparative break down of unemployment figures by district	
Part 4: Wards	
Further breakdown of unemployment figures by ward:	
Cheltenham	6
Cotswolds	8
Forest of Dean	10
Gloucester	12
Stroud	14
Tewkesbury	16
Part 5: Map	18
Distribution of claimant rate across Gloucestershire	
Part 6: Youth Unemployment	20
Unemployment data for the 18-24 year old age group	
Part 7: Young People	22
Data about Young People Not in Education, Employment or Training (NEET)	

The Claimant Count is a measure of the number of people who are unemployed and claiming benefits. From 1996 until the recent introduction of Universal Credit, this was based on the number of people claiming Jobseeker's Allowance. However, since its introduction some unemployment benefit claimants will be claiming Universal Credit instead.

To reflect this change, the Claimant Count has been expanded to include people claiming Jobseeker's Allowance plus those who claim Universal Credit and who are out of work. For more information about Universal Credit please see the [ONS website](http://www.ons.gov.uk).

INTRODUCTION

The Unemployment Bulletin provides a monthly update on unemployment data for Gloucestershire, the South West region and the United Kingdom. It is produced by the Strategic Needs Analysis Team in the County Council's Strategy and Challenge function. The data is sourced from the Office for National Statistics via Nomis (www.nomis.co.uk).

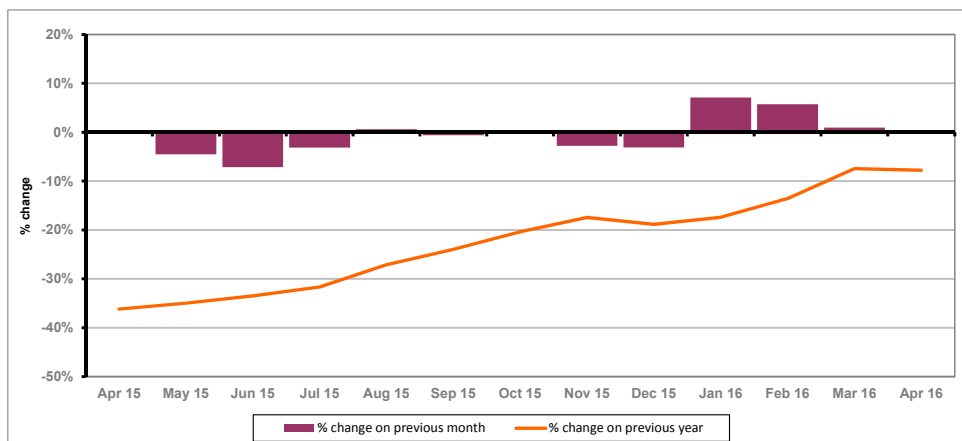
PART 1: SUMMARY

The claimant rate in Gloucestershire was 1.1% in April 2016. This remained the same as the March 2016 figure. The UK and the South West rate also remained the same as the previous month at 1.9% and 1.2% respectively. Gloucestershire's rate was 0.1% lower than the South West average of 1.2%, and 0.8% lower than the UK average of 1.9%.

The claimant count in Gloucestershire in April 2016 decreased by 15 people. The amount of people claiming in April 2016 was 0.4% lower than the number in March 2016. This compares to a 3.5% decrease in the South West and a 2.6% decrease for the UK.

The year on year claimant count in Gloucestershire has decreased since last month. The count was 7.8% lower in April 2016 than at the same point in the previous year as shown in the graph below.

Gloucestershire claimants - Month on Month and Year on Year change:
April 2015 to April 2016



Source: ONS Crown Copyright Reserved

Produced by:

Strategic Needs Analysis Team
Strategy and Challenge
Gloucestershire County Council
May 2016

DISTRICTS AT A GLANCE

At a glance unemployment information grouped by district. Includes:

Claim count: Total number of people claiming Job Seekers Allowance and Universal Credit who are not in work in April 2016

Compared to last month: How much larger/smaller April's claimant count is compared to March, expressed as a %

Claimant rate: The % of working age population claiming Job Seekers Allowance and Universal Credit who are not in work in April 2016

Highest claiming ward: The ward with the highest claim count in that district and the rate

CHELTENHAM BOROUGH

Claim count:	790
Compared to last month:	-4.2%
Claimant rate:	1.1%
Highest claiming ward	Hesters Way (2.1%)

GLOUCESTER CITY

Claim count:	1,450
Compared to last month:	2.5%
Claimant rate:	1.8%
Highest claiming wards	Westgate (3.9%)

COTSWOLD DISTRICT

Claim count:	305
Compared to last month:	-7.6%
Claimant rate:	0.6%
Highest claiming ward	Cirencester Watermoor (1.9%)

STROUD DISTRICT

Claim count:	525
Compared to last month:	-0.9%
Claimant rate:	0.8%
Highest claiming wards	Central (1.8%)

FOREST OF DEAN

Claim count:	685
Compared to last month:	3.0%
Claimant rate:	1.3%
Highest claiming ward	Cinderford West (2.7%)

TEWKESBURY BOROUGH

Claim count:	510
Compared to last month:	0.0%
Claimant rate:	1.0%
Highest claiming ward	Tewkesbury Prior's Park (2.9%)

PART 2: UK, SW AND GLOUCESTERSHIRE INDICATORS

The unemployment situation in Gloucestershire compared to the South West and the UK.

Claimant Rate

Figure 1: Claimant Rate for Gloucestershire, the South West and UK over the past year

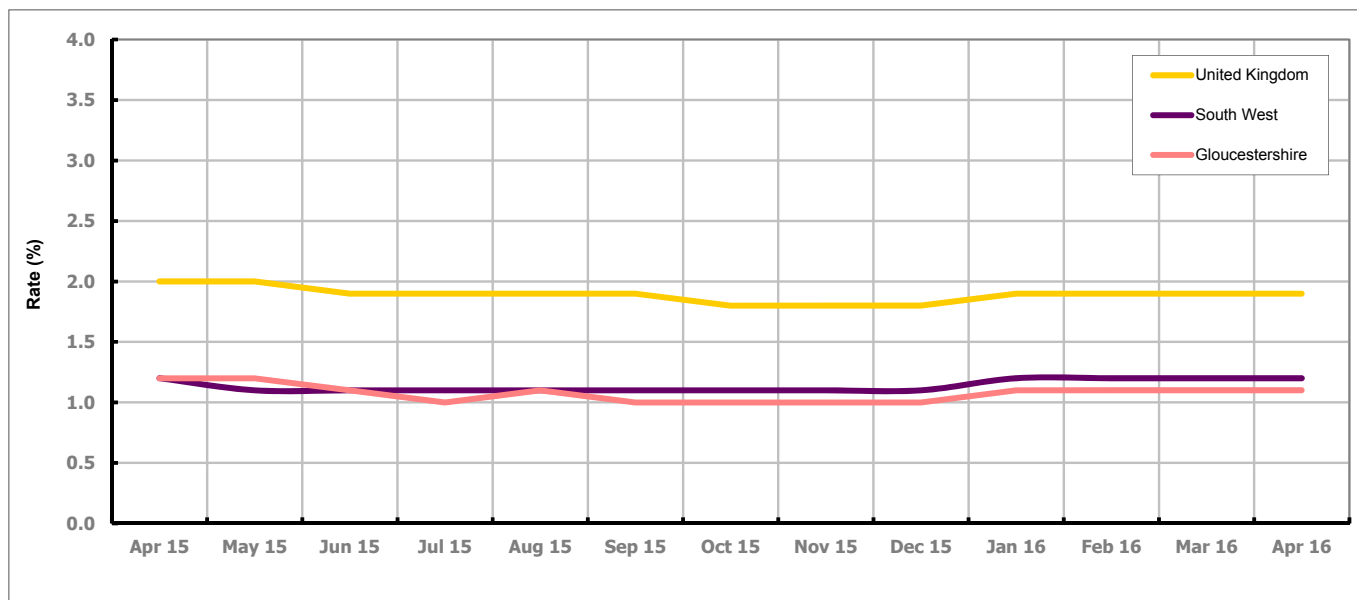


Figure 1 shows the claimant rate for Gloucestershire at 1.1% in April 2016. The Gloucestershire rate has been lower than the South West average since August 2015. It has been persistently lower by approximately 0.8% against the UK average.

Claimant Count

Table 1: Analysis of UK, South West and Gloucestershire Claimant Counts

Area	Claimant Count in April 2016	% change on March 2016	Average % change over the last six months	Consecutive months decreasing
UK	770,330	-2.6%	0.8%	0
South West	39,565	-3.5%	1.4%	1
Gloucestershire	4,265	-0.4%	1.7%	0

Table 1 shows that in April 2016, the number of claimants in Gloucestershire was 0.4% lower than the number in March 2016.

The average change in claimants in Gloucestershire for the six months to April 2016 was 1.7%.

PART 3: LOCAL AUTHORITY DISTRICT ANALYSIS

Claimant Rate and Claimant Count

Figure 2: Claimant Rate (%) across Gloucestershire - April 2016

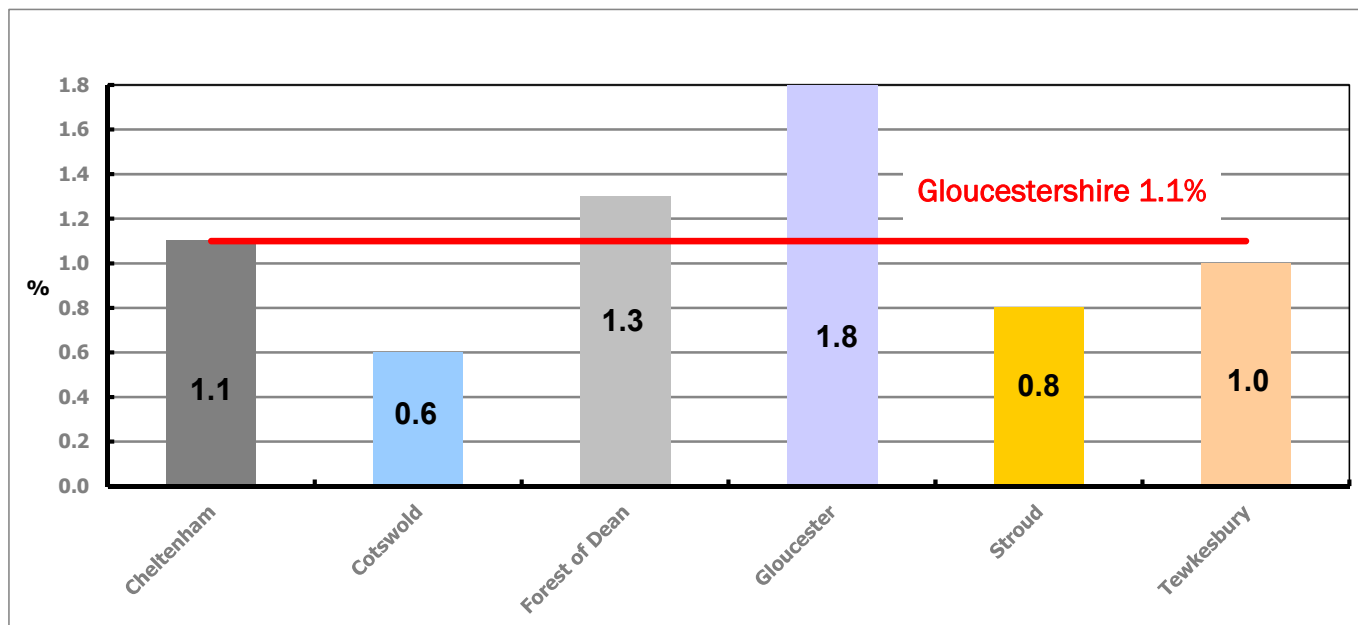


Figure 2 shows the claimant rate for April 2016 in Gloucestershire. Between March and April 2016, the rate remained the same in all districts except Cotswold where there was a decrease.

Figure 3: Total claimants over the past year across Gloucestershire Districts

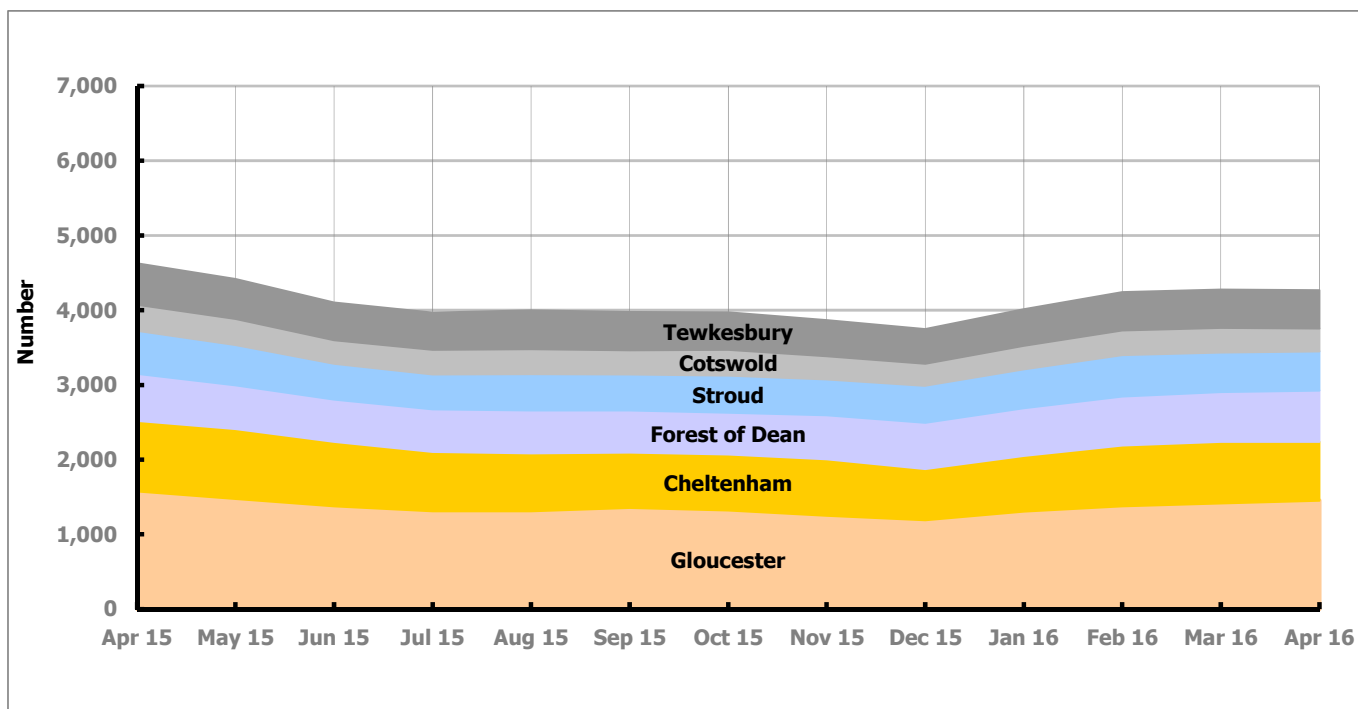


Figure 3 shows the overall claimant count by district over the past year. The number of claimants has decreased over the last year, with the exception of August and October 2015, and January, February and March 2016 when there was an increase.

Table 2: Analysis of Gloucestershire and District Claimant Counts

Total	Apr 16 Number	Apr 16 Rate	Mar 16 Number	Mar 16 Rate	Monthly change	% monthly change	Monthly change of rate
Gloucestershire	4,265	1.1	4,280	1.1	-15	-0.4%	0.0
Cheltenham	790	1.1	825	1.1	-35	-4.2%	0.0
Cotswold	305	0.6	330	0.7	-25	-7.6%	-0.1
Forest of Dean	685	1.3	665	1.3	20	3.0%	0.0
Gloucester	1,450	1.8	1,415	1.8	35	2.5%	0.0
Stroud	525	0.8	530	0.8	-5	-0.9%	0.0
Tewkesbury	510	1.0	510	1.0	0	0.0%	0.0

Table 2 shows the change in the claimant count in April 2016 compared to March 2016. All districts saw a decrease in the number of claimants, except Forest of Dean and Gloucester which saw an increase, and Tewkesbury which stayed the same.

Table 3: Analysis of Male Gloucestershire and District Claimant Counts

Male	Apr 16 Number	Apr 16 Rate	Mar 16 Number	Mar 16 Rate	Monthly change	% monthly change	Monthly change of rate
Gloucestershire	2,780	1.5	2,775	1.5	5	0.2%	0.0
Cheltenham	515	1.4	545	1.4	-30	-5.5%	0.0
Cotswold	190	0.8	210	0.9	-20	-9.5%	-0.1
Forest of Dean	440	1.7	435	1.7	5	1.1%	0.0
Gloucester	965	2.4	925	2.3	40	4.3%	0.1
Stroud	345	1.0	350	1.0	-5	-1.4%	0.0
Tewkesbury	325	1.3	320	1.2	5	1.6%	0.1

Table 3 shows the change in the male claimant count in April 2016 compared to March 2016. Cheltenham, Cotswold and Stroud which saw a decrease in the number of male claimants, while Forest of Dean, Gloucester and Tewkesbury saw an increase.

Table 4: Analysis of Female Gloucestershire and District Claimant Counts

Female	Apr 16 Number	Apr 16 Rate	Mar 16 Number	Mar 16 Rate	Monthly change	% monthly change	Monthly change of rate
Gloucestershire	1,490	0.8	1,500	0.8	-10	-0.7%	0.0
Cheltenham	280	0.7	280	0.7	0	0.0%	0.0
Cotswold	115	0.4	125	0.5	-10	-8.0%	-0.1
Forest of Dean	245	1.0	230	0.9	15	6.5%	0.1
Gloucester	485	1.2	495	1.2	-10	-2.0%	0.0
Stroud	180	0.5	185	0.5	-5	-2.7%	0.0
Tewkesbury	185	0.7	190	0.7	-5	-2.6%	0.0

Table 4 shows the change in the female claimant count in April 2016 compared to March 2016. All districts saw a decrease in the number of female claimants, except Forest of Dean which saw an increase, and Cheltenham which stayed the same.

PART 4: LOCAL AUTHORITY DISTRICT AND WARD ANALYSIS

This section covers the six districts and a comparison of their constituent wards.

4.1 Cheltenham Borough

Claimant Rate and Claimant Count

Figure 4: Cheltenham Borough claimant rate over the last year

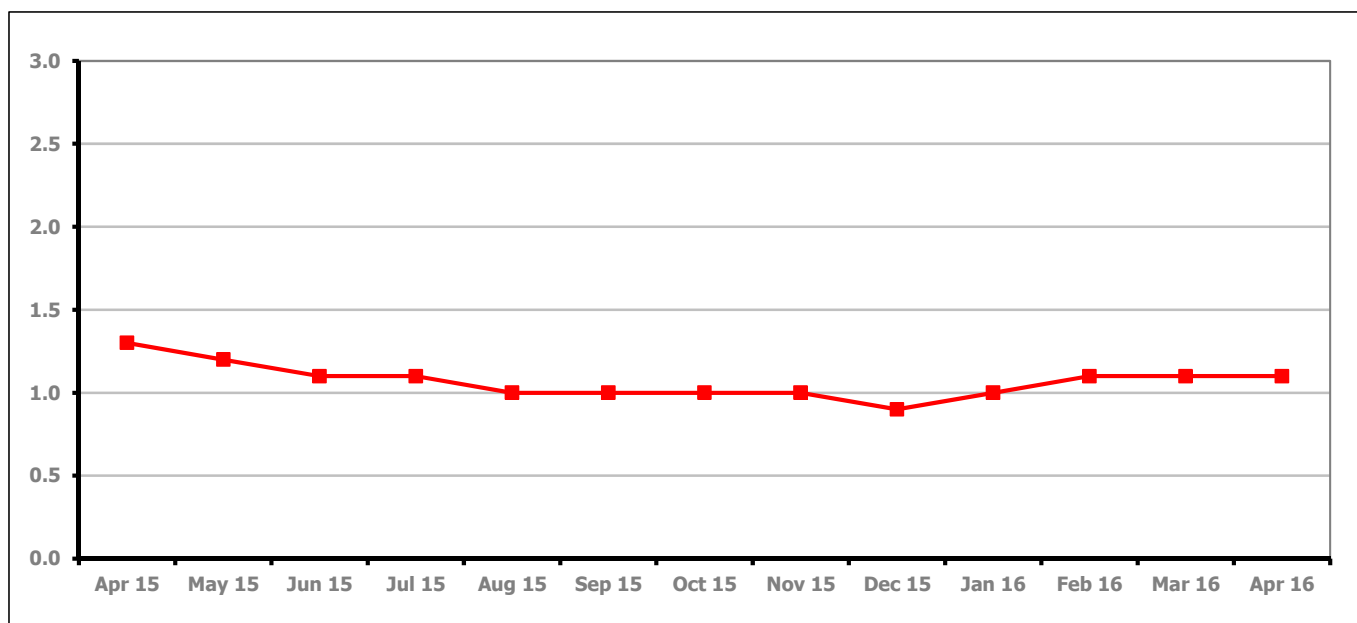


Figure 4 shows the claimant rate in Cheltenham stayed the same as last month at 1.1%.

Figure 5: Cheltenham Borough claimants - Month on Month and Year on Year change

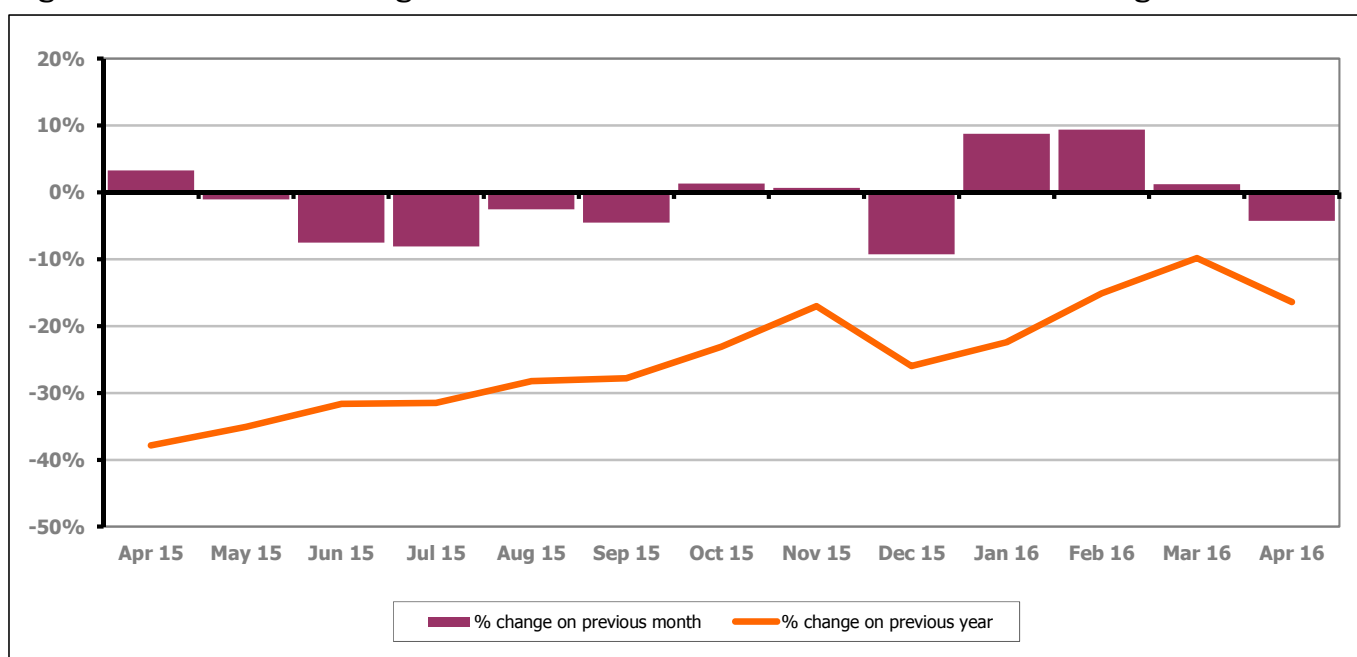


Figure 5 shows the claimant count decreased by 4.2% since last month. The change on the previous year has decreased between March and April 2016 to -16.4%.

PART 4: LOCAL AUTHORITY DISTRICT AND WARD ANALYSIS

4.1 Cheltenham Borough continued...

Figure 6: Claimant rates across Cheltenham Borough wards - April 2016

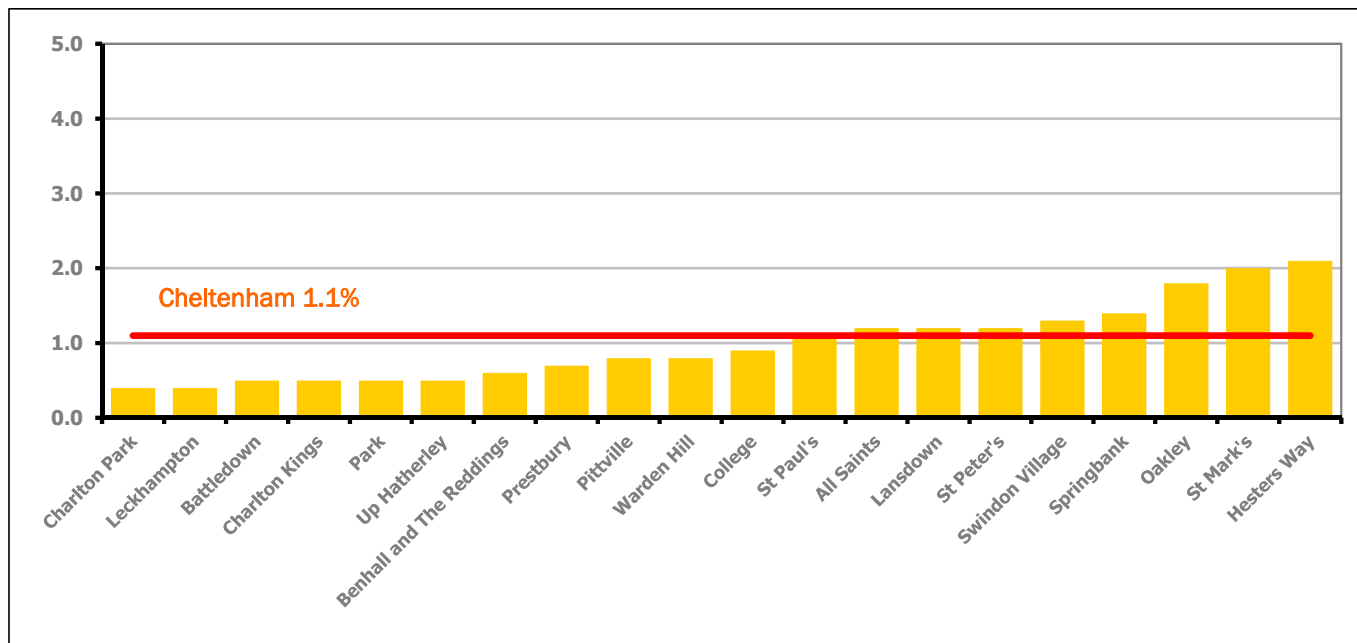


Figure 6 shows the claimant rates for Cheltenham Borough wards. The red line represents the average claimant rate across the Borough of 1.1%. Eight wards lie above the average.

Table 5: Analysis of Claimant Count at Cheltenham Borough ward level - April 2016

District	Ward	Rate	Rank*	
Cheltenham	Charlton Park	0.4	13	lowest 10% of county
Cheltenham	Leckhampton	0.4	13	
Cheltenham	Battledown	0.5	26	
Cheltenham	Charlton Kings	0.5	26	
Cheltenham	Park	0.5	26	
Cheltenham	Up Hatherley	0.5	26	
Cheltenham	Benhall and The Reddings	0.6	42	first quartile of county
Cheltenham	Prestbury	0.7	56	
Cheltenham	Pittville	0.8	66	
Cheltenham	Warden Hill	0.8	66	second quartile of county
Cheltenham	College	0.9	82	
Cheltenham	St Paul's	1.1	97	
Cheltenham	All Saints	1.2	107	third quartile of county
Cheltenham	Lansdown	1.2	107	
Cheltenham	St Peter's	1.2	107	
Cheltenham	Swindon Village	1.3	115	fourth quartile of county
Cheltenham	Springbank	1.4	119	
Cheltenham	Oakley	1.8	125	
Cheltenham	St Mark's	2.0	129	highest 10% of county
Cheltenham	Hesters Way	2.1	131	

* 1 = "best" and 142 = "worst"

Table 5 shows overall claimant rates for Cheltenham Borough wards and their position relative to all wards in Gloucestershire.

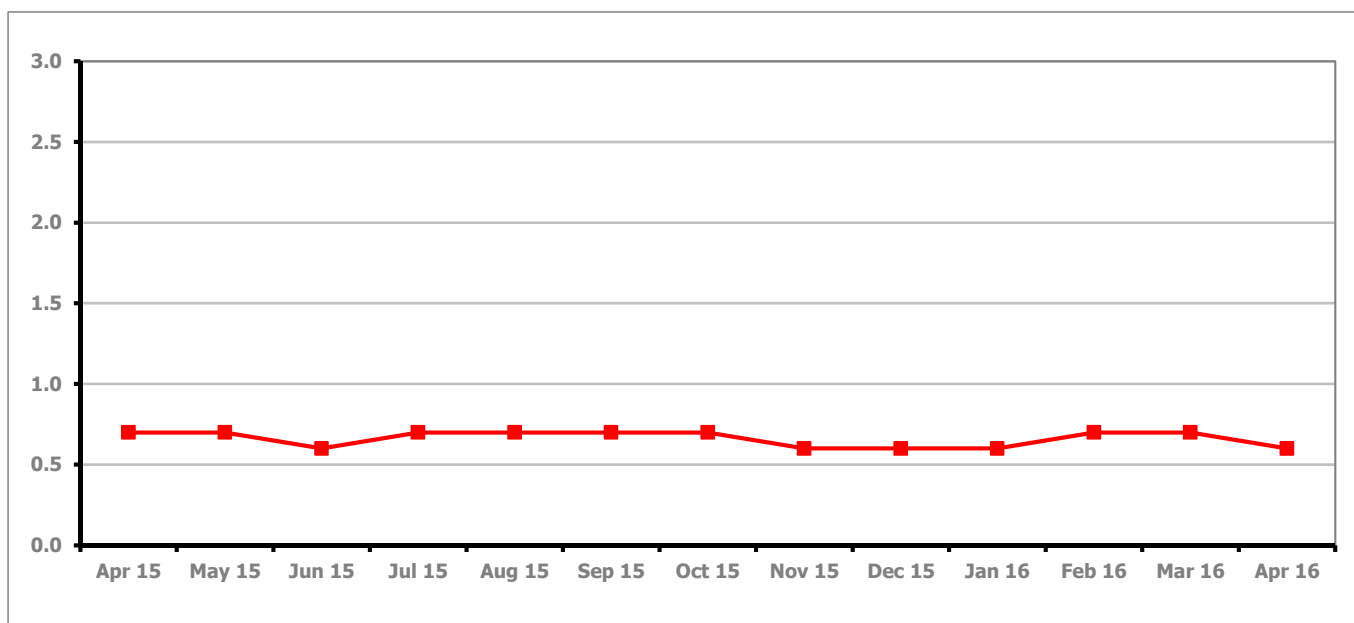
PART 4: LOCAL AUTHORITY DISTRICT AND WARD ANALYSIS**4.2 Cotswold District****Claimant Rate and Claimant Count***Figure 7: Cotswold District claimant rate over the last year*

Figure 7 shows the claimant rate in Cotswold District decreased in April 2016 to 0.6%.

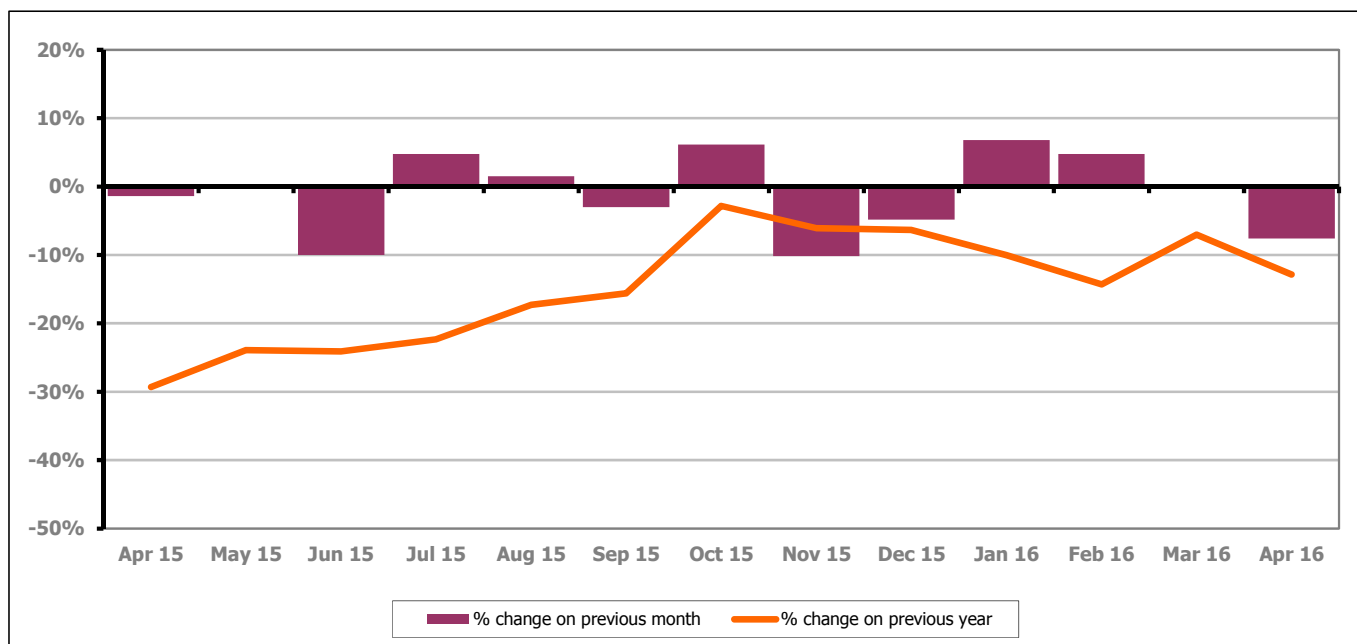
Figure 8: Cotswold District claimants - Month on Month and Year on Year change

Figure 8 shows the claimant count decreased by 7.6% since last month. The change on the previous year has decreased between March and April 2016 to -12.9%.

PART 4: LOCAL AUTHORITY DISTRICT AND WARD ANALYSIS

4.2 Cotswold District continued...

Figure 9: Claimant rates across Cotswold District wards - April 2016

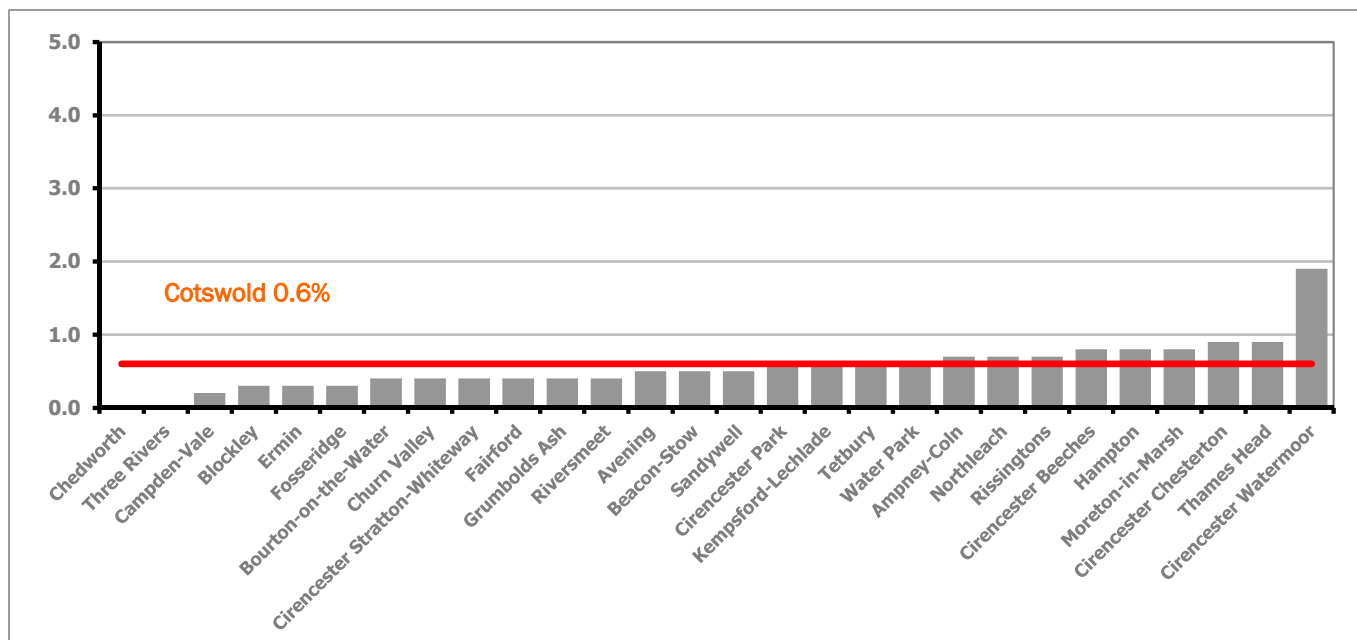
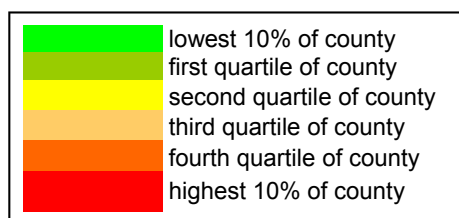


Figure 9 shows the claimant rates for Cotswold District wards. The red line represents the average claimant rate across the District of 0.6%. Nine wards lie above the average.

Table 6: Analysis of Claimant Count at Cotswold District ward level - April 2016

District	Ward	Rate	Rank*
Cotswolds	Three Rivers	0.0	1
Cotswolds	Chedworth	<0.2	1
Cotswolds	Campden-Vale	0.2	8
Cotswolds	Blockley	0.3	9
Cotswolds	Ermin	0.3	9
Cotswolds	Fosseridge	0.3	9
Cotswolds	Bourton-on-the-Water	0.4	13
Cotswolds	Churn Valley	0.4	13
Cotswolds	Cirencester Stratton-Whiteway	0.4	13
Cotswolds	Fairford	0.4	13
Cotswolds	Grumbolds Ash	0.4	13
Cotswolds	Riversmeet	0.4	13
Cotswolds	Avening	0.5	26
Cotswolds	Beacon-Stow	0.5	26
Cotswolds	Sandywell	0.5	26
Cotswolds	Cirencester Park	0.6	42
Cotswolds	Kempsford-Lechlade	0.6	42
Cotswolds	Tetbury	0.6	42
Cotswolds	Water Park	0.6	42
Cotswolds	Ampney-Coln	0.7	56
Cotswolds	Northleach	0.7	56
Cotswolds	Rissingtons	0.7	56
Cotswolds	Cirencester Beeches	0.8	66
Cotswolds	Hampton	0.8	66
Cotswolds	Moreton-in-Marsh	0.8	66
Cotswolds	Cirencester Chesterton	0.9	82
Cotswolds	Thames Head	0.9	82
Cotswolds	Cirencester Watermoor	1.9	128



* 1 = "best" and 142 = "worst"

Table 6 shows overall claimant rates for Cotswold District wards and their position relative to all wards in Gloucestershire.

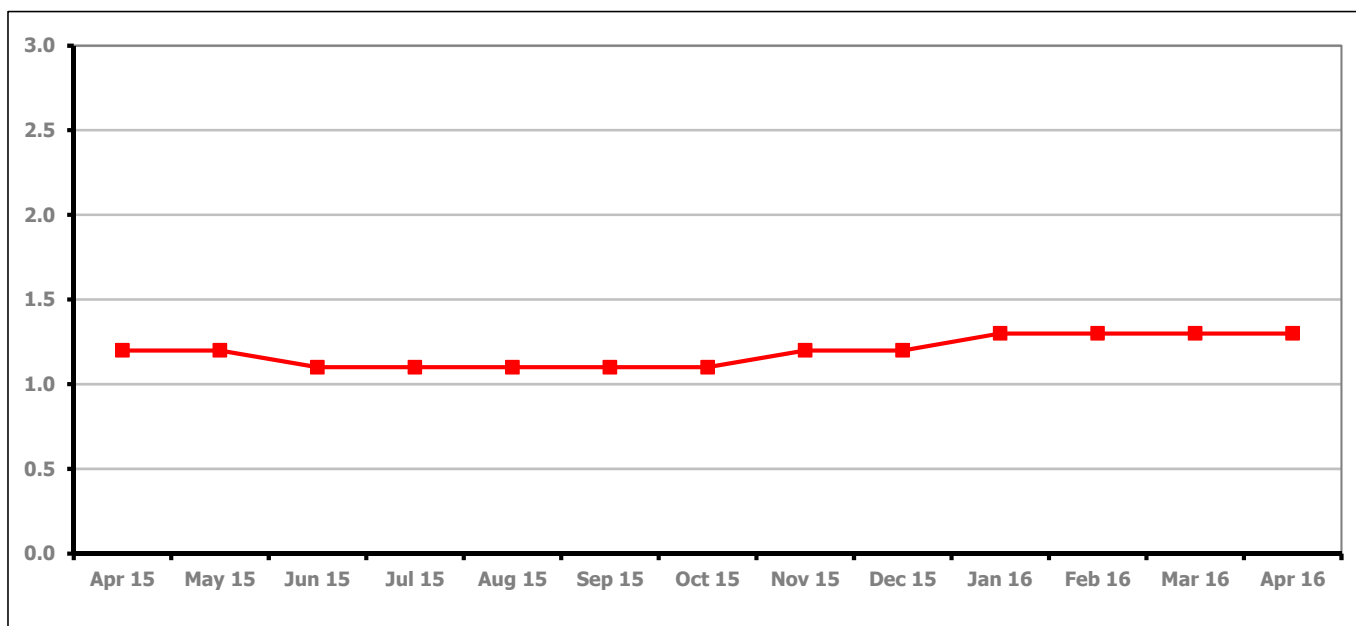
PART 4: LOCAL AUTHORITY DISTRICT AND WARD ANALYSIS**4.3 Forest of Dean District****Claimant Rate and Claimant Count***Figure 10: Forest of Dean District claimant rate over the last year*

Figure 10 shows the claimant rate in the Forest of Dean stayed the same as last month at 1.3%.

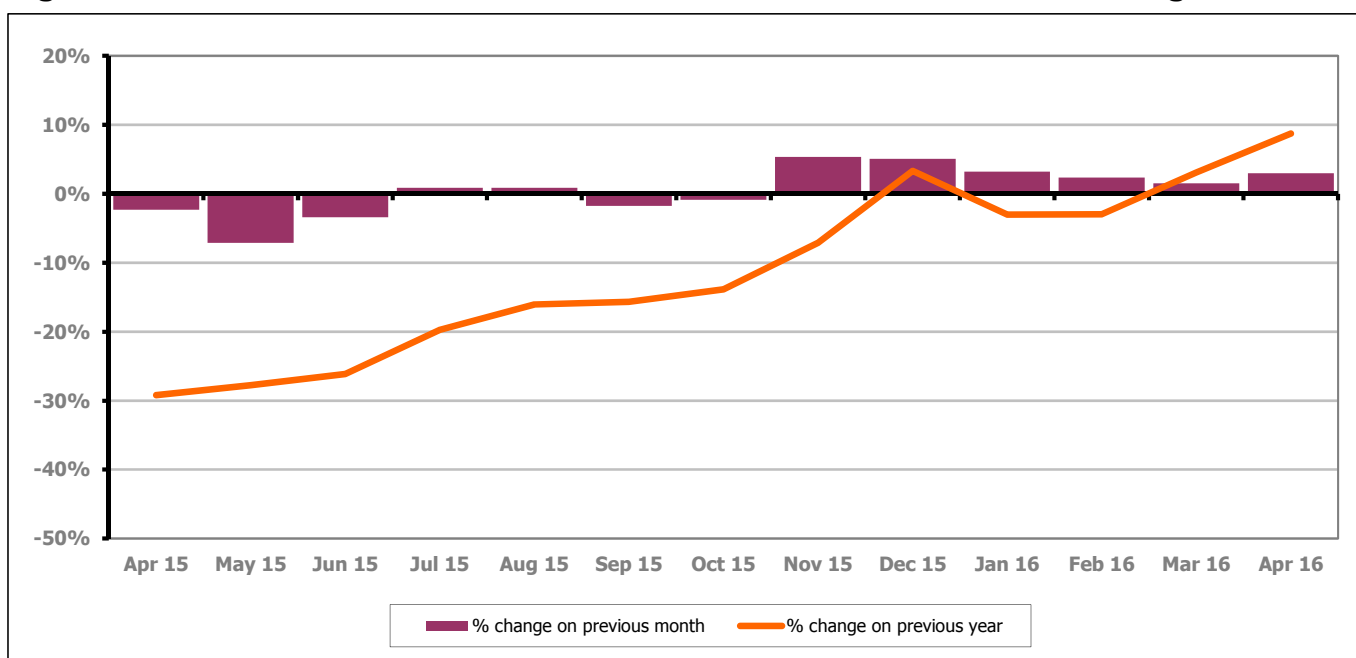
Figure 11: Forest of Dean District claimants - Month on Month and Year on Year change

Figure 11 shows the claimant count increased by 3.0% since March 2016. The change on the previous year has increased between March and April 2016 to 8.7%.

PART 4: LOCAL AUTHORITY DISTRICT AND WARD ANALYSIS

4.3 Forest of Dean District continued...

Figure 12: Claimant rates across Forest of Dean District wards - April 2016

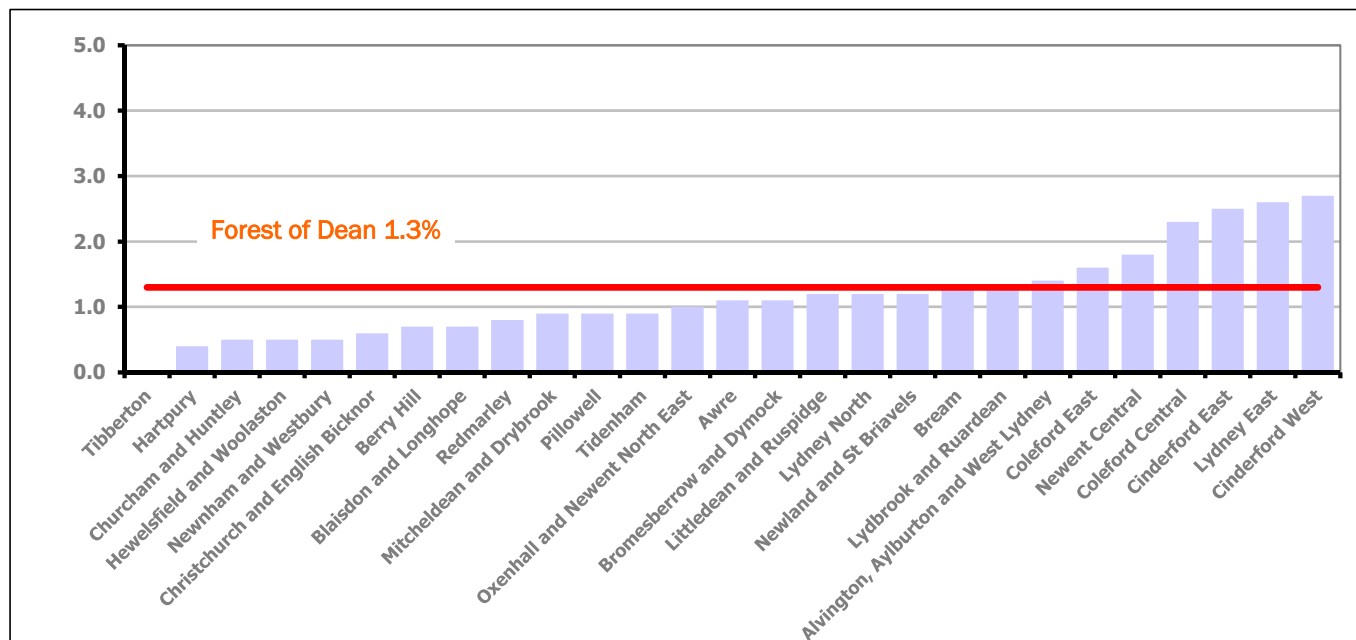
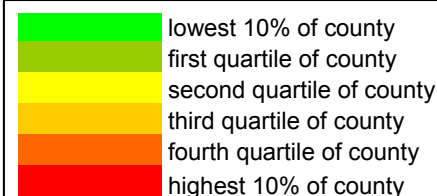


Figure 12 shows the claimant rates for Forest of Dean District wards. The red line represents the average claimant rate across the District of 1.3%. Seven wards lie above the average.

Table 7: Analysis of Claimant Count at Forest of Dean District ward level - April 2016

District	Ward	Rate	Rank*
Forest	Tibberton	<0.4	1
Forest	Hartpury	0.4	13
Forest	Churcham and Huntley	0.5	26
Forest	Hewelsfield and Woolaston	0.5	26
Forest	Newnham and Westbury	0.5	26
Forest	Christchurch and English Bicknor	0.6	42
Forest	Berry Hill	0.7	56
Forest	Blaisdon and Longhope	0.7	56
Forest	Redmarley	0.8	66
Forest	Mitcheldean and Drybrook	0.9	82
Forest	Pillowell	0.9	82
Forest	Tidenham	0.9	82
Forest	Oxenham and Newent North East	1.0	95
Forest	Awre	1.1	97
Forest	Bromesberrow and Dymock	1.1	97
Forest	Littledean and Ruspidge	1.2	107
Forest	Lydney North	1.2	107
Forest	Newland and St Briavels	1.2	107
Forest	Bream	1.3	115
Forest	Lydbrook and Ruardean	1.3	115
Forest	Alvington, Aylburton and West Lydney	1.4	119
Forest	Coleford East	1.6	122
Forest	Newent Central	1.8	125
Forest	Coleford Central	2.3	133
Forest	Cinderford East	2.5	135
Forest	Lydney East	2.6	136
Forest	Cinderford West	2.7	137



* 1 = "best" and 142 = "worst"

Table 7 shows overall claimant rates for the Forest of Dean District wards and their position relative to all wards in Gloucestershire.

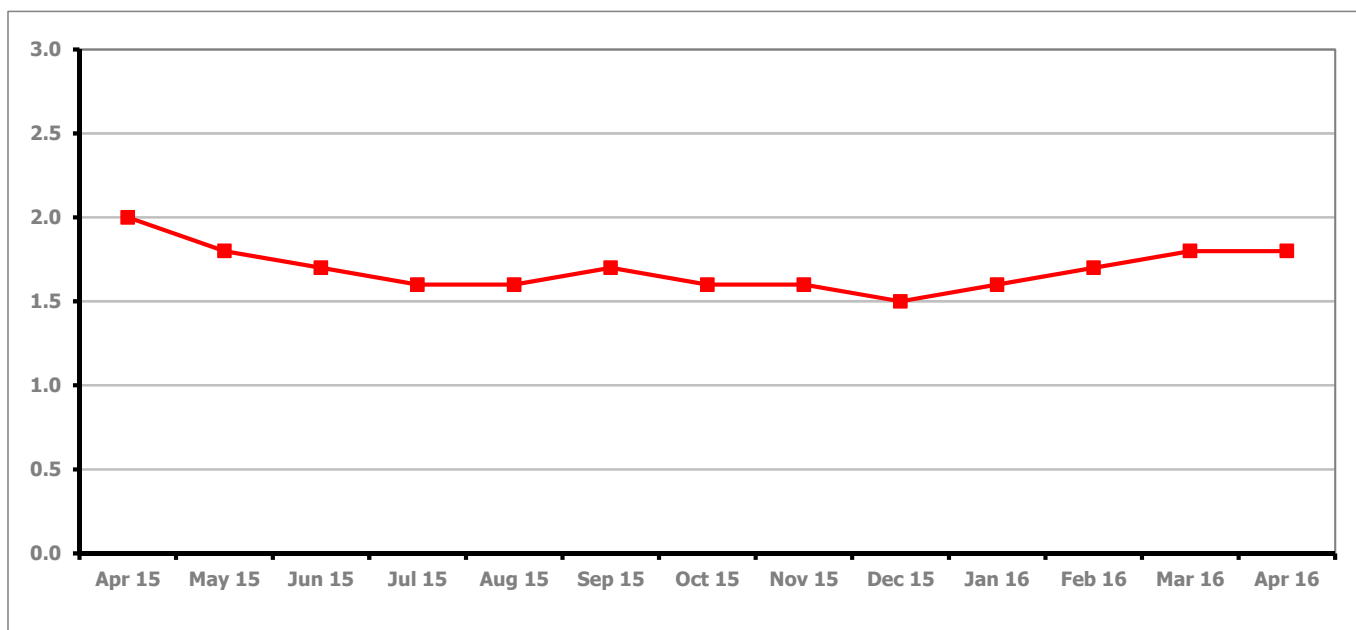
PART 4: LOCAL AUTHORITY DISTRICT AND WARD ANALYSIS**4.4 Gloucester City****Claimant Rate and Claimant Count***Figure 13: Gloucester City claimant rate over the last year*

Figure 13 shows the claimant rate for Gloucester City stayed the same as last month at 1.8%.

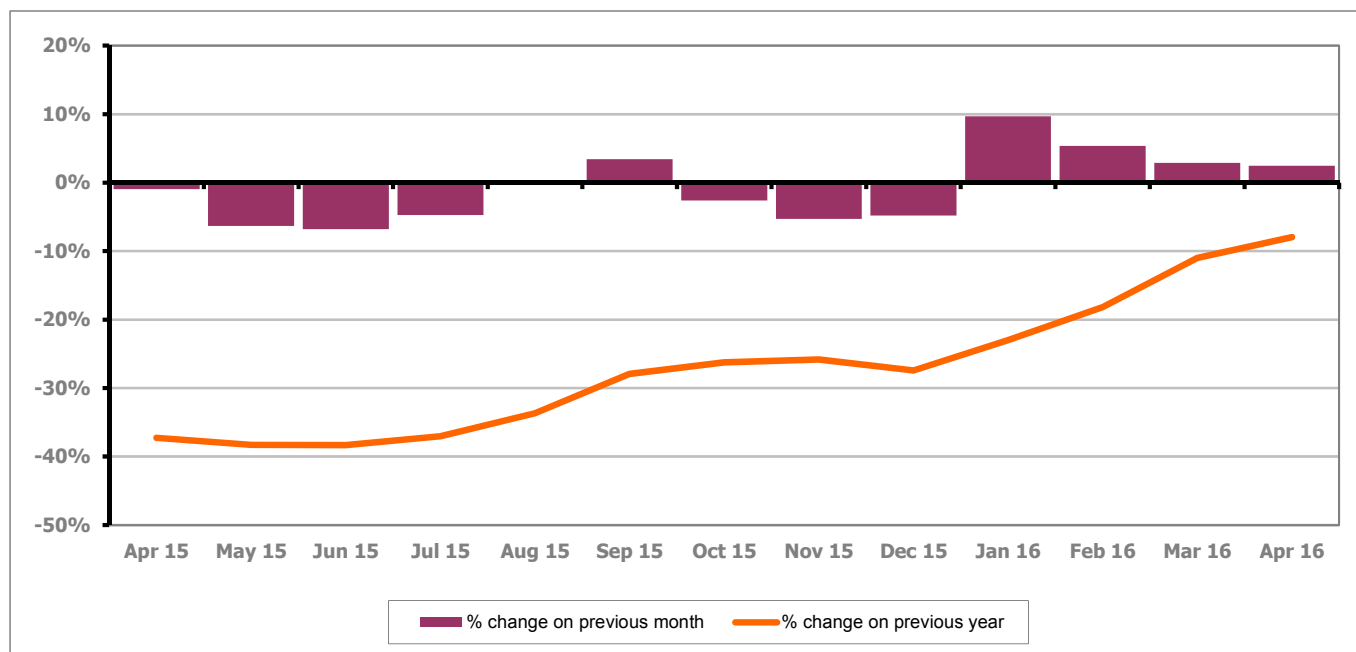
Figure 14: Gloucester City claimants - Month on Month and Year on Year change

Figure 14 shows the monthly claimant count increased by 2.5% since March 2016. The change on the previous year has increased between March and April 2016 to -7.9%.

PART 4: LOCAL AUTHORITY DISTRICT AND WARD ANALYSIS

4.4 Gloucester City continued...

Figure 15: Claimant rates across Gloucester City wards - April 2016

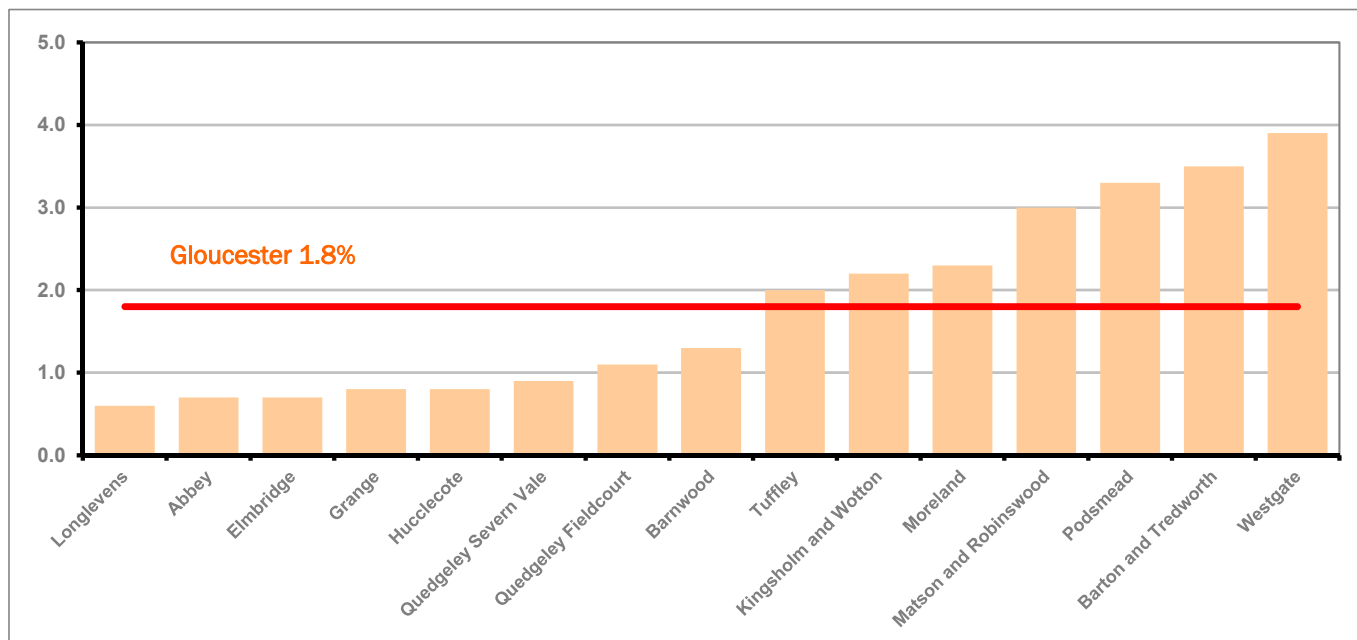


Figure 15 shows the claimant rates for Gloucester City district wards. The red line represents the average claimant rate across the City of 1.8%. Seven wards lie above the average.

Table 8: Analysis of Claimant Count at Gloucester City ward level - April 2016

District	Ward	Rate	Rank*
Gloucester	Longlevens	0.6	42
Gloucester	Abbey	0.7	56
Gloucester	Elmbridge	0.7	56
Gloucester	Grange	0.8	66
Gloucester	Hucclecote	0.8	66
Gloucester	Quedgeley Severn Vale	0.9	82
Gloucester	Quedgeley Fieldcourt	1.1	97
Gloucester	Barnwood	1.3	115
Gloucester	Tuffley	2.0	129
Gloucester	Kingsholm and Wotton	2.2	132
Gloucester	Moreland	2.3	133
Gloucester	Matson and Robinswood	3.0	139
Gloucester	Podsmead	3.3	140
Gloucester	Barton and Tredworth	3.5	141
Gloucester	Westgate	3.9	142

lowest 10% of county

first quartile of county

second quartile of county

third quartile of county

fourth quartile of county

highest 10% of county

* 1 = "best" and 142 = "worst"

Table 8 shows overall claimant rates for Gloucester City wards and their position relative to all wards in Gloucestershire.

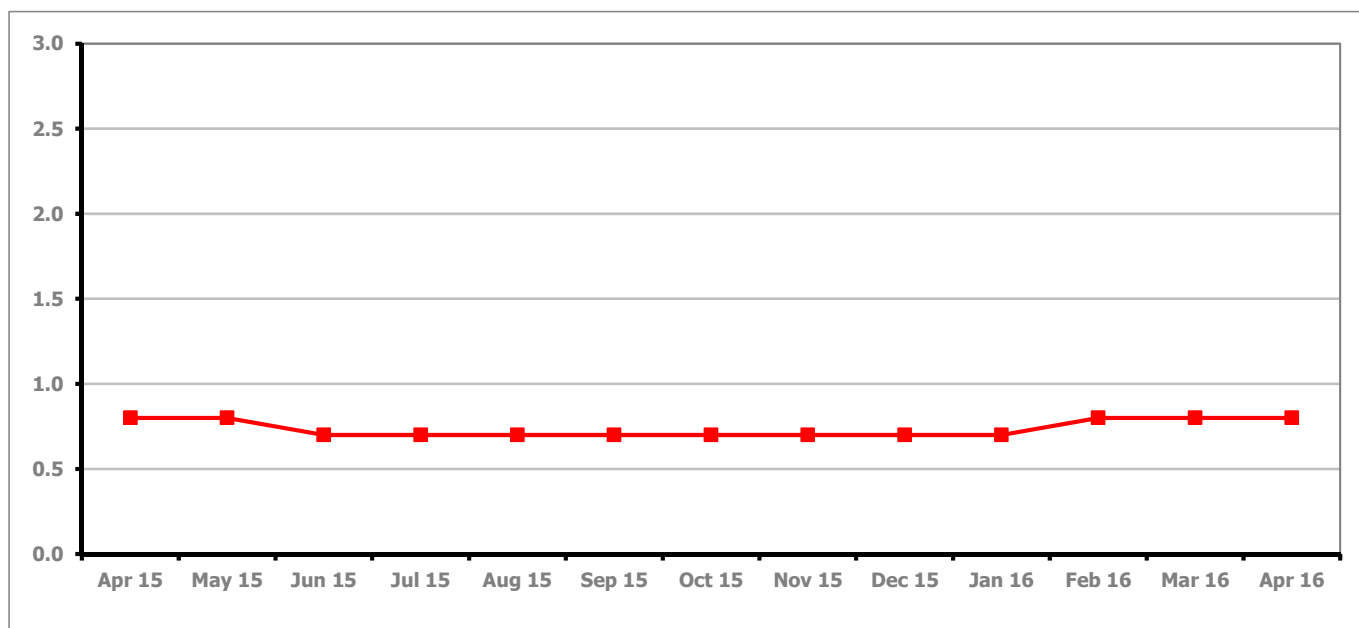
PART 4: LOCAL AUTHORITY DISTRICT AND WARD ANALYSIS**4.5 Stroud District****Claimant Rate and Claimant Count***Figure 16: Stroud District claimant rate over the last year*

Figure 16 shows the claimant rate for Stroud stayed the same as last month at 0.8%.

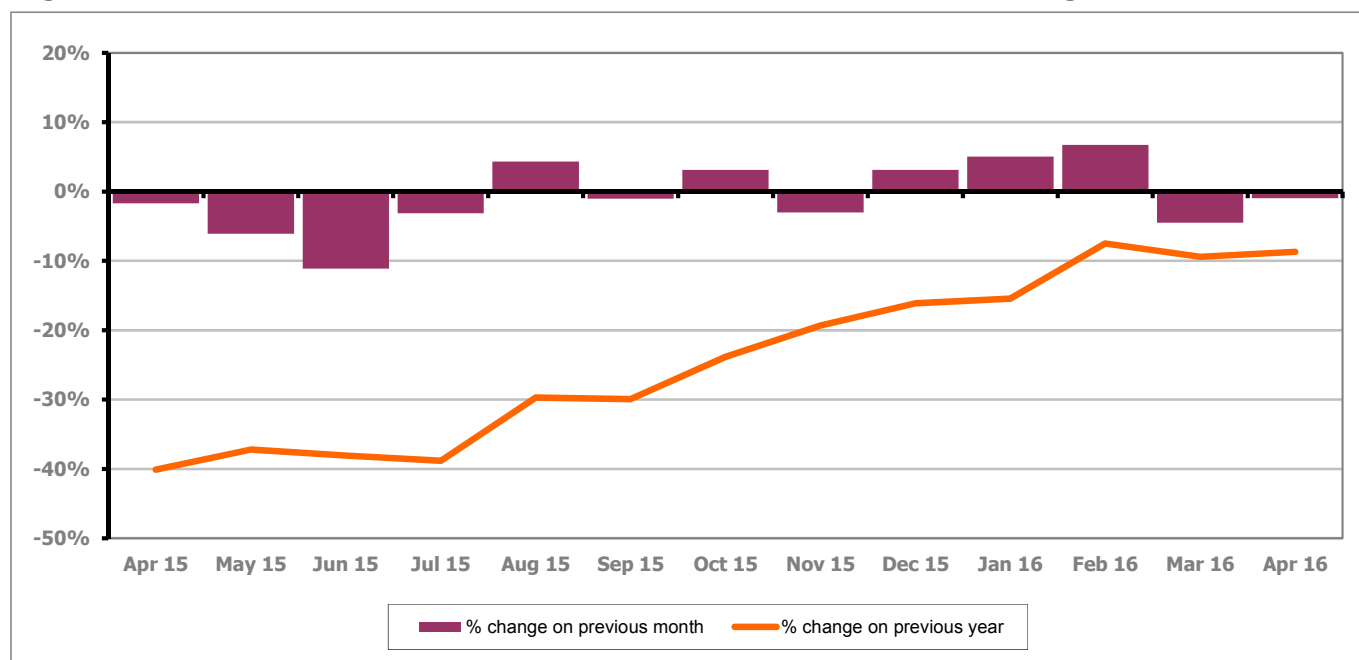
Figure 17: Stroud District claimants - Month on Month and Year on Year change

Figure 17 shows the monthly claimant count decreased by 0.9% since March 2016. The change on the previous year has increased between March and April 2016 to -8.7%.

PART 4: LOCAL AUTHORITY AND DISTRICT ANALYSIS

4.5 Stroud District continued...

Figure 18: Claimant rates across Stroud District wards - April 2016

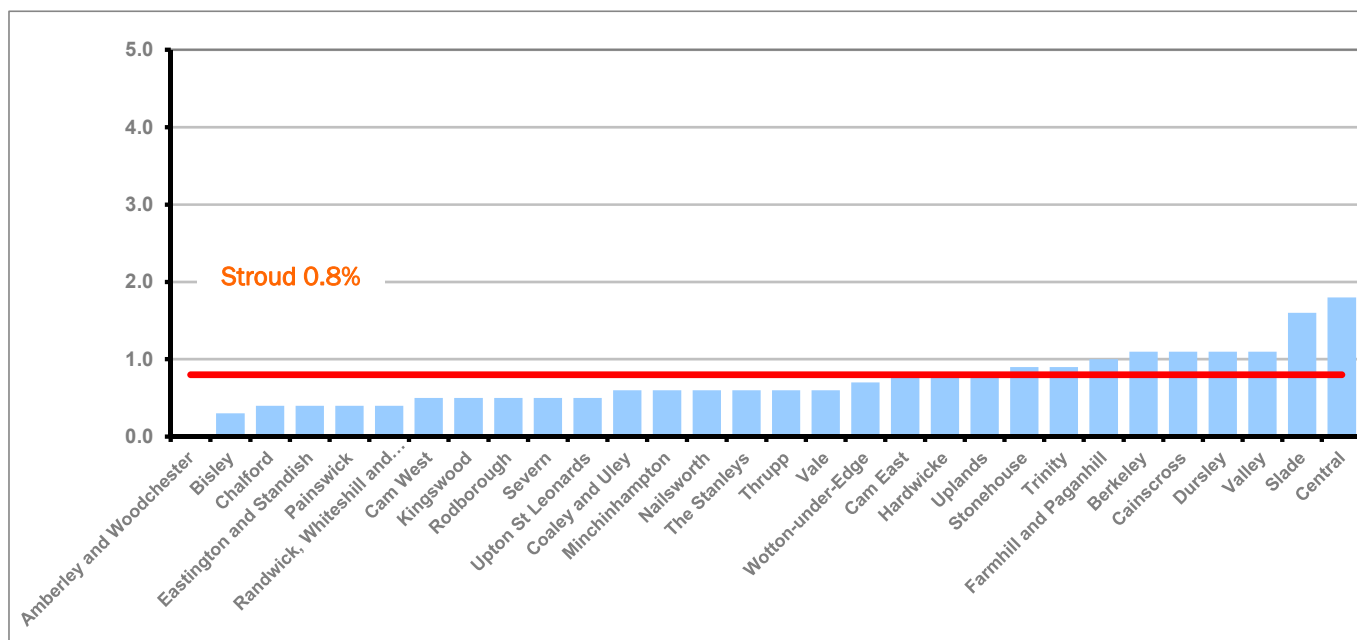
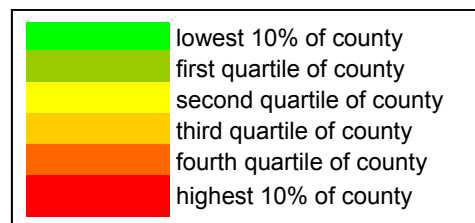


Figure 18 shows the claimant rates in Stroud District wards. The red line represents the average claimant rate across the District of 0.8%. Nine wards are above the average.

Table 9: Analysis of Claimant Count at Stroud District ward level - April 2016

District	Ward	Rate	Rank*
Stroud	Amberley and Woodchester	<0.3	1
Stroud	Bisley	0.3	9
Stroud	Chalford	0.4	13
Stroud	Eastington and Standish	0.4	13
Stroud	Painswick	0.4	13
Stroud	Randwick, Whiteshill and Ruscombe	0.4	13
Stroud	Cam West	0.5	26
Stroud	Kingswood	0.5	26
Stroud	Rodborough	0.5	26
Stroud	Severn	0.5	26
Stroud	Upton St Leonards	0.5	26
Stroud	Coaley and Uley	0.6	42
Stroud	Minchinhampton	0.6	42
Stroud	Nailsworth	0.6	42
Stroud	The Stanleys	0.6	42
Stroud	Thrupp	0.6	42
Stroud	Vale	0.6	42
Stroud	Wotton-under-Edge	0.7	56
Stroud	Cam East	0.8	66
Stroud	Hardwicke	0.8	66
Stroud	Uplands	0.8	66
Stroud	Stonehouse	0.9	82
Stroud	Trinity	0.9	82
Stroud	Farmhill and Paganhill	1.0	95
Stroud	Berkeley	1.1	97
Stroud	Cainscross	1.1	97
Stroud	Dursley	1.1	97
Stroud	Valley	1.1	97
Stroud	Slade	1.6	122
Stroud	Central	1.8	125



* 1 = "best" and 142 = "worst"

Table 9 shows overall claimant rates for Stroud District wards and their position relative to all wards in Gloucestershire.

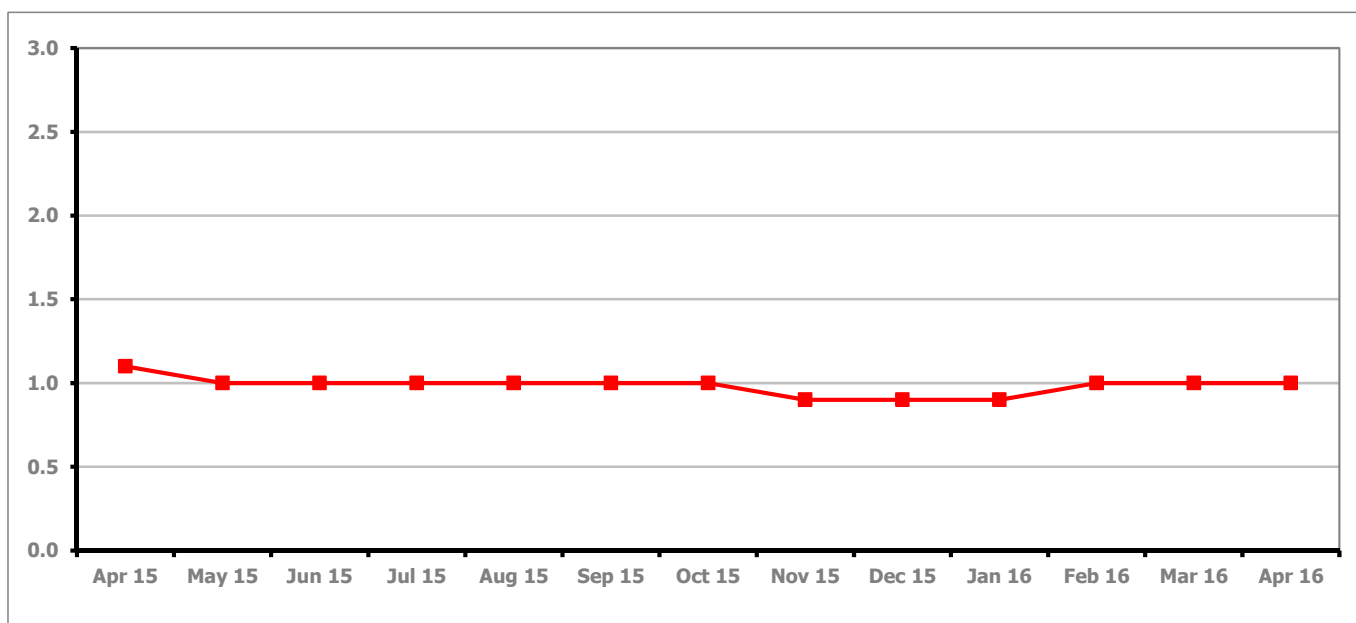
PART 4: LOCAL AUTHORITY DISTRICT AND WARD ANALYSIS**4.6 Tewkesbury District****Claimant Rate and Claimant Count***Figure 19: Tewkesbury District claimant rate over the last year*

Figure 19 shows the claimant rate for Tewkesbury District stayed the same as last month at 1.0%.

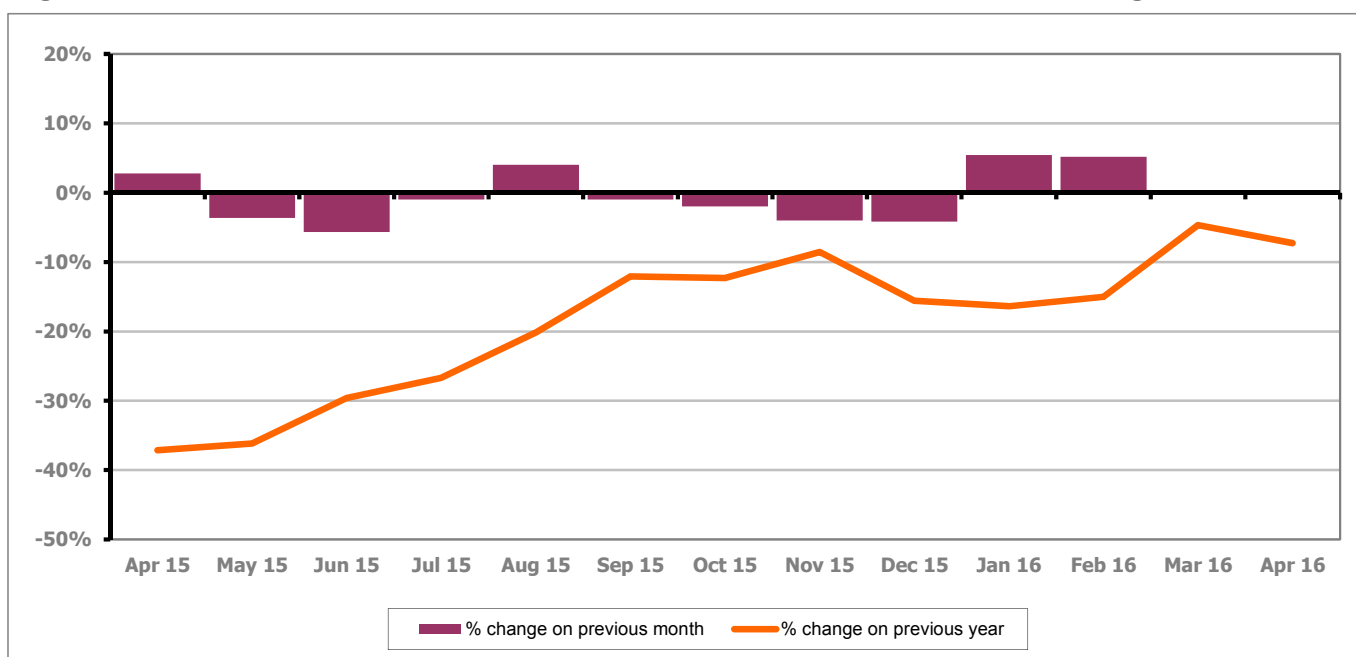
Figure 20: Tewkesbury District claimants - Month on Month and Year on Year change

Figure 20 shows that the monthly claimant count remained unchanged from last month. The change on the previous year decreased between March and April 2016 to -7.3%.

PART 4: LOCAL AUTHORITY AND DISTRICT ANALYSIS

4.6 Tewkesbury District continued...

Figure 21: Claimant rates across Tewkesbury District wards - April 2016

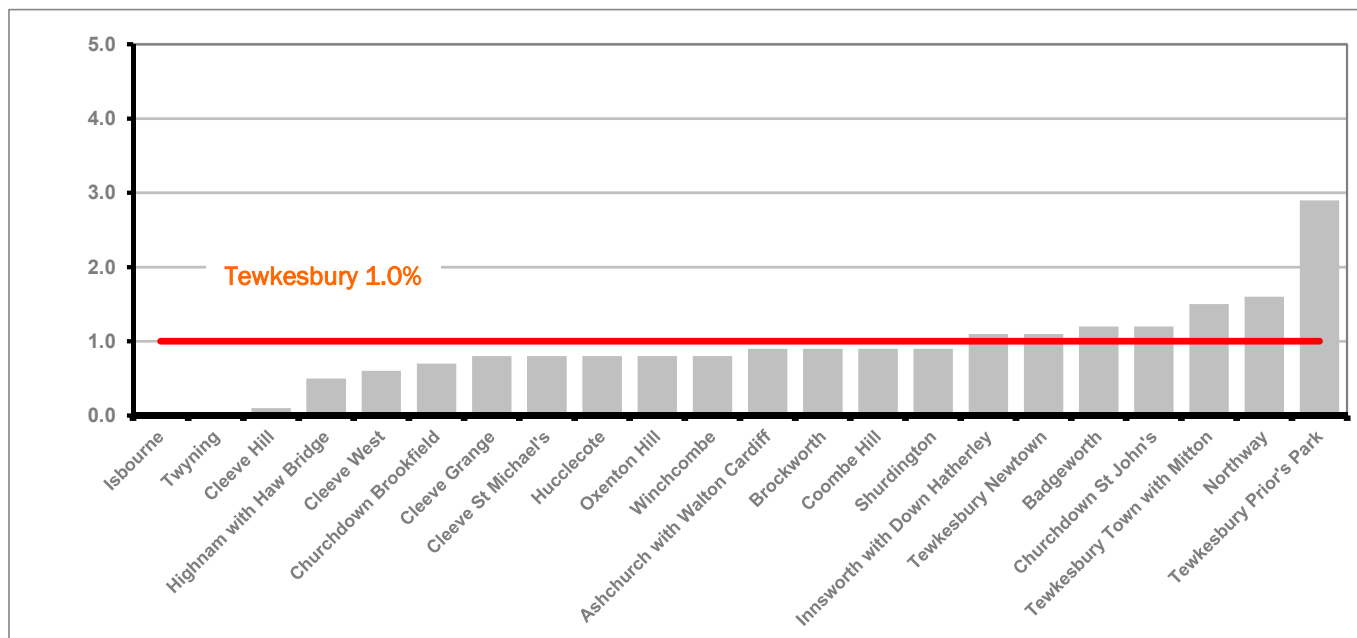


Figure 21 shows the claimant rates in Tewkesbury District wards. The red line represents the average claimant rate across the District of 1.0% and seven wards are above the average.

Table 10: Analysis of Claimant Count at Tewkesbury District level - April 2016

District	Ward	Rate	Rank*
Tewkesbury	Isbourne	<0.1	1
Tewkesbury	Twynning	<0.1	1
Tewkesbury	Cleeve Hill	0.1	7
Tewkesbury	Highnam with Haw Bridge	0.5	26
Tewkesbury	Cleeve West	0.6	42
Tewkesbury	Churchdown Brookfield	0.7	56
Tewkesbury	Cleeve Grange	0.8	66
Tewkesbury	Cleeve St Michael's	0.8	66
Tewkesbury	Hucclecote	0.8	66
Tewkesbury	Oxenton Hill	0.8	66
Tewkesbury	Winchcombe	0.8	66
Tewkesbury	Ashchurch with Walton Cardiff	0.9	82
Tewkesbury	Brockworth	0.9	82
Tewkesbury	Coombe Hill	0.9	82
Tewkesbury	Shurdington	0.9	82
Tewkesbury	Innsworth with Down Hatherley	1.1	97
Tewkesbury	Tewkesbury Newtown	1.1	97
Tewkesbury	Badgeworth	1.2	107
Tewkesbury	Churchdown St John's	1.2	107
Tewkesbury	Tewkesbury Town with Mitton	1.5	121
Tewkesbury	Northway	1.6	122
Tewkesbury	Tewkesbury Prior's Park	2.9	138

lowest 10% of county

first quartile of county

second quartile of county

third quartile of county

fourth quartile of county

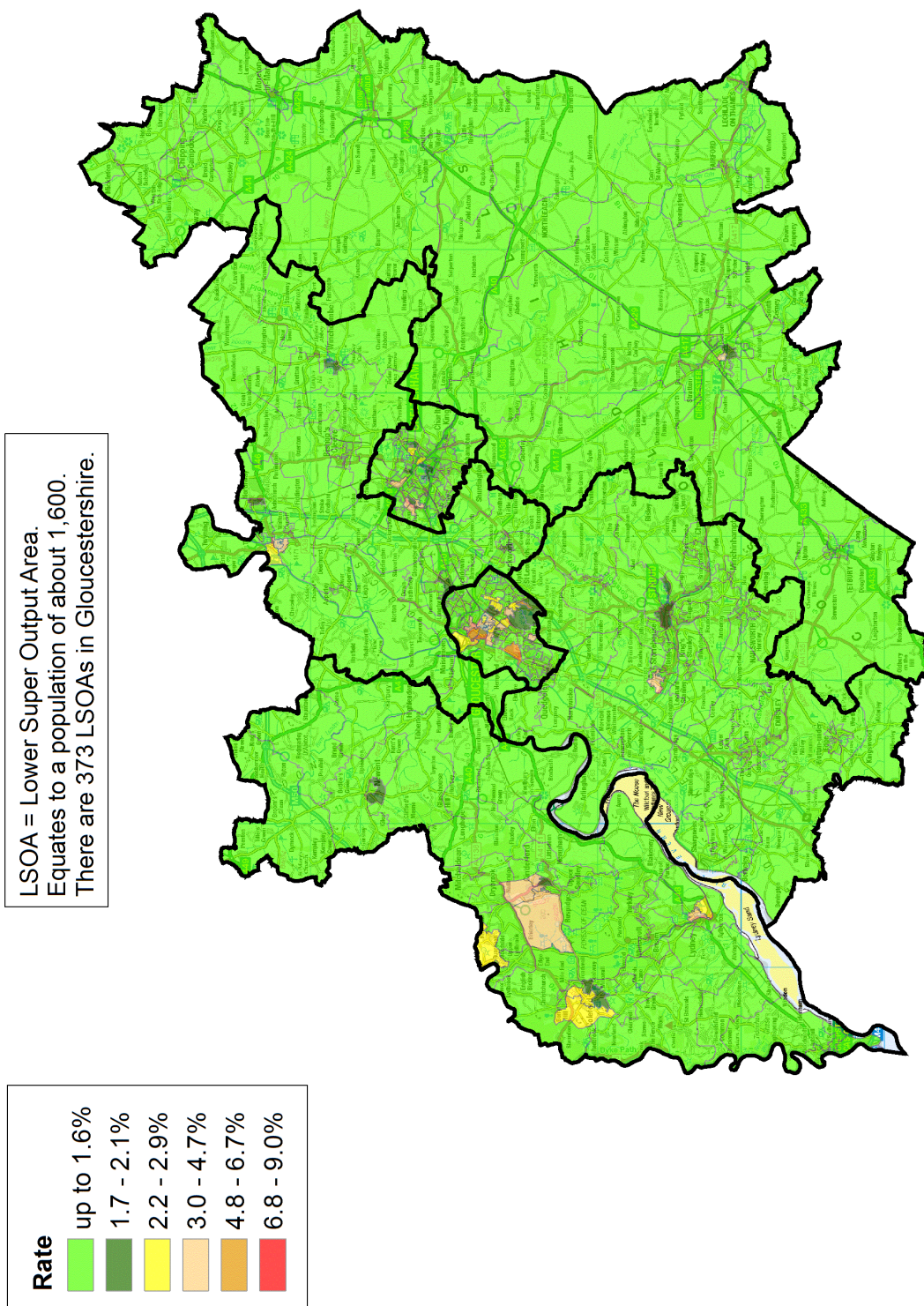
highest 10% of county

* 1 = "best" and 142 = "worst"

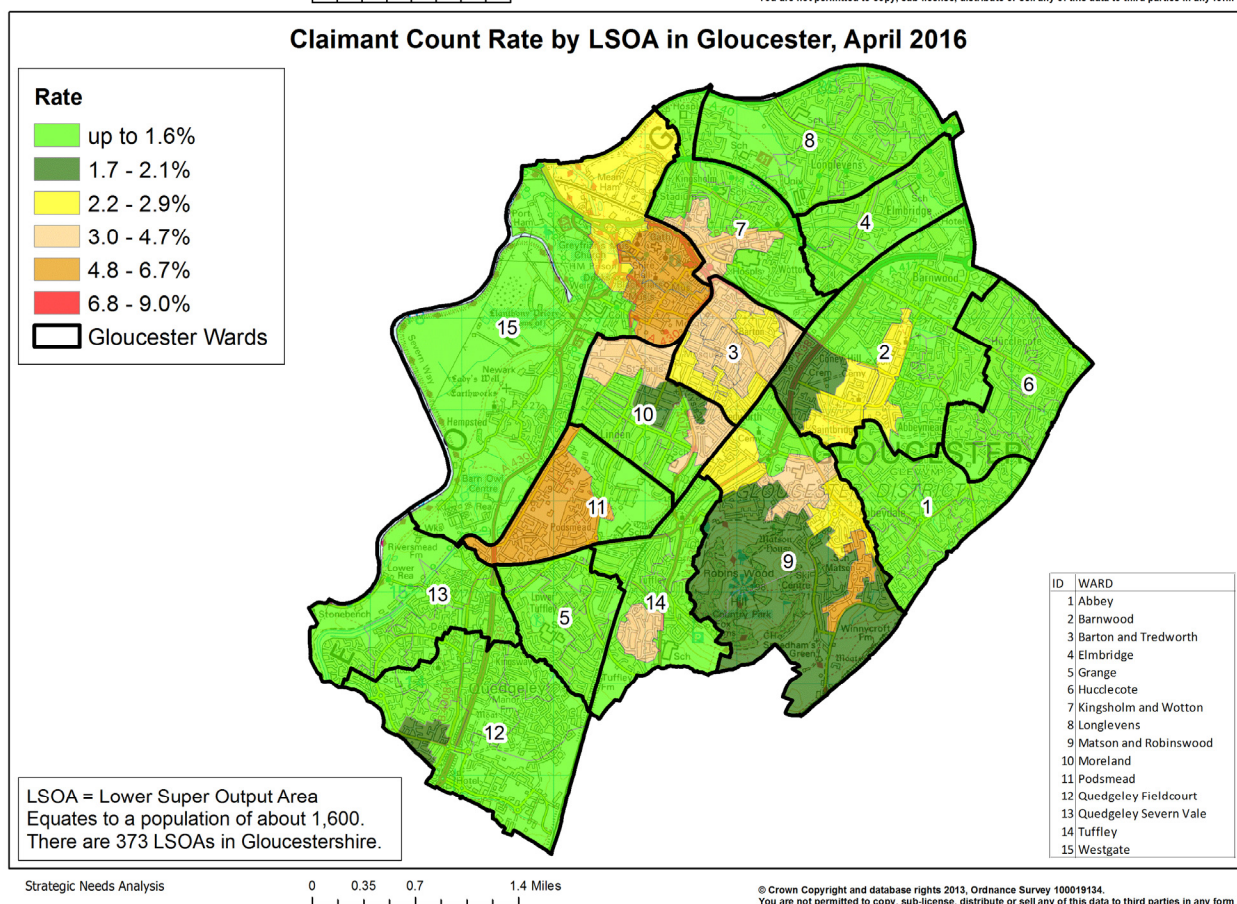
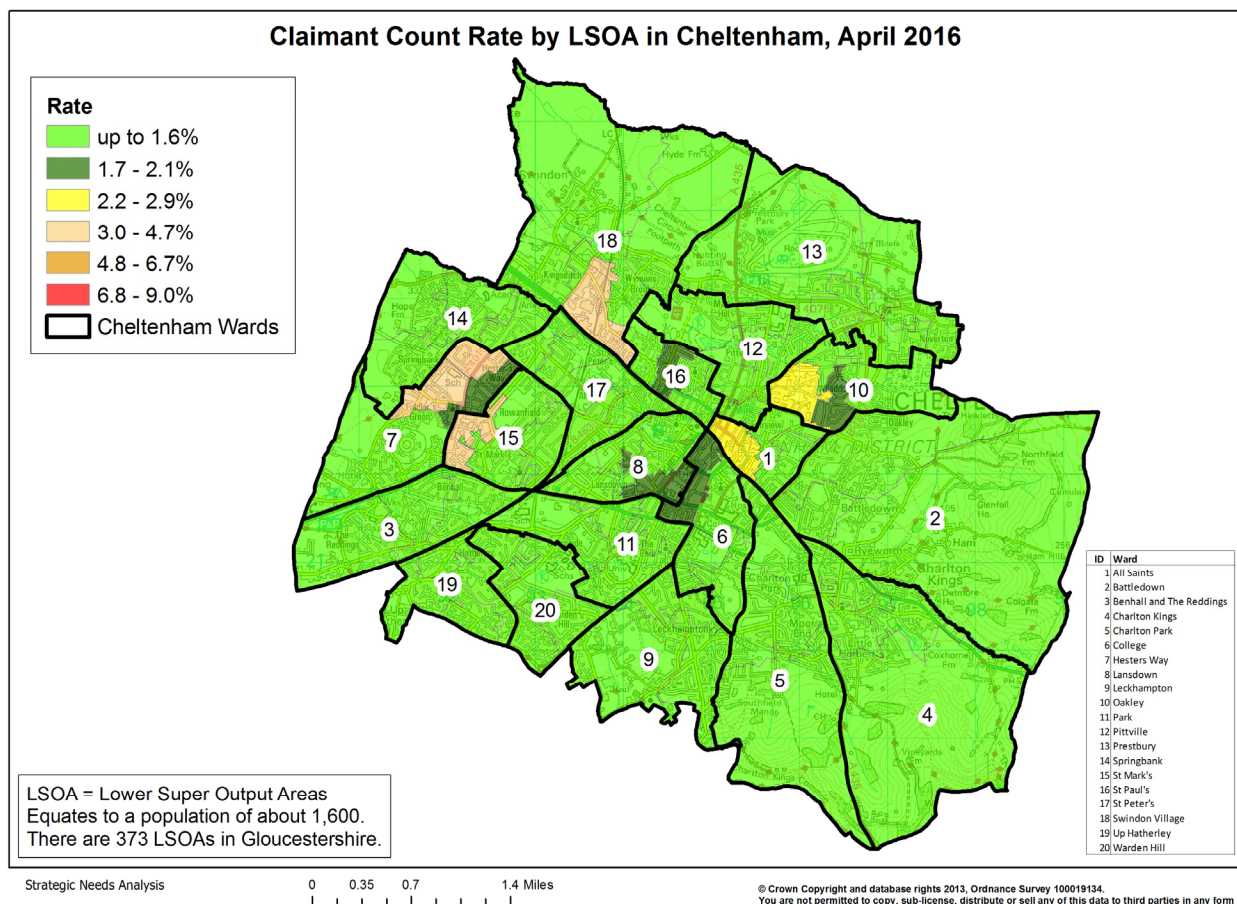
Table 10 shows overall claimant rates for Tewkesbury District wards and their position relative to all wards in Gloucestershire.

PART 5: MAP SHOWING DISTRIBUTION OF CLAIMANT RATE ACROSS GLOUCESTERSHIRE

Claimant Count Rate by LSOA in Gloucestershire, April 2016



PART 5: MAP SHOWING DISTRIBUTION OF CLAIMANT RATE ACROSS GLOUCESTERSHIRE



PART 6: YOUTH UNEMPLOYMENT(18-24 year olds)

Youth Claimant Rate and Claimant Count

Figure 22: Claimant Count for Gloucestershire over the past year

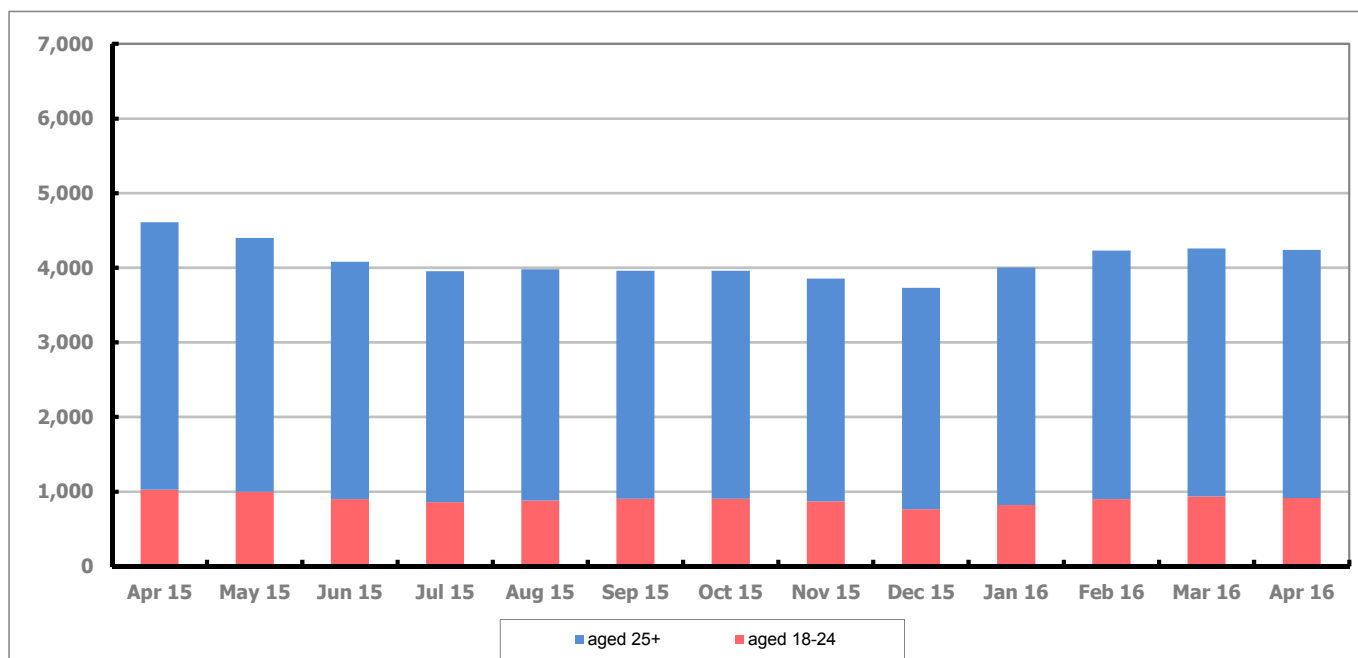


Figure 22 shows that in April 2016, 915 people aged 18-24 were claiming Job Seekers Allowance and Universal Credit who were not in work in Gloucestershire, this represents 21.5% of total working age claimants.

Figure 23: Youth Claimant Rate for Gloucestershire, the South West and UK over the past year

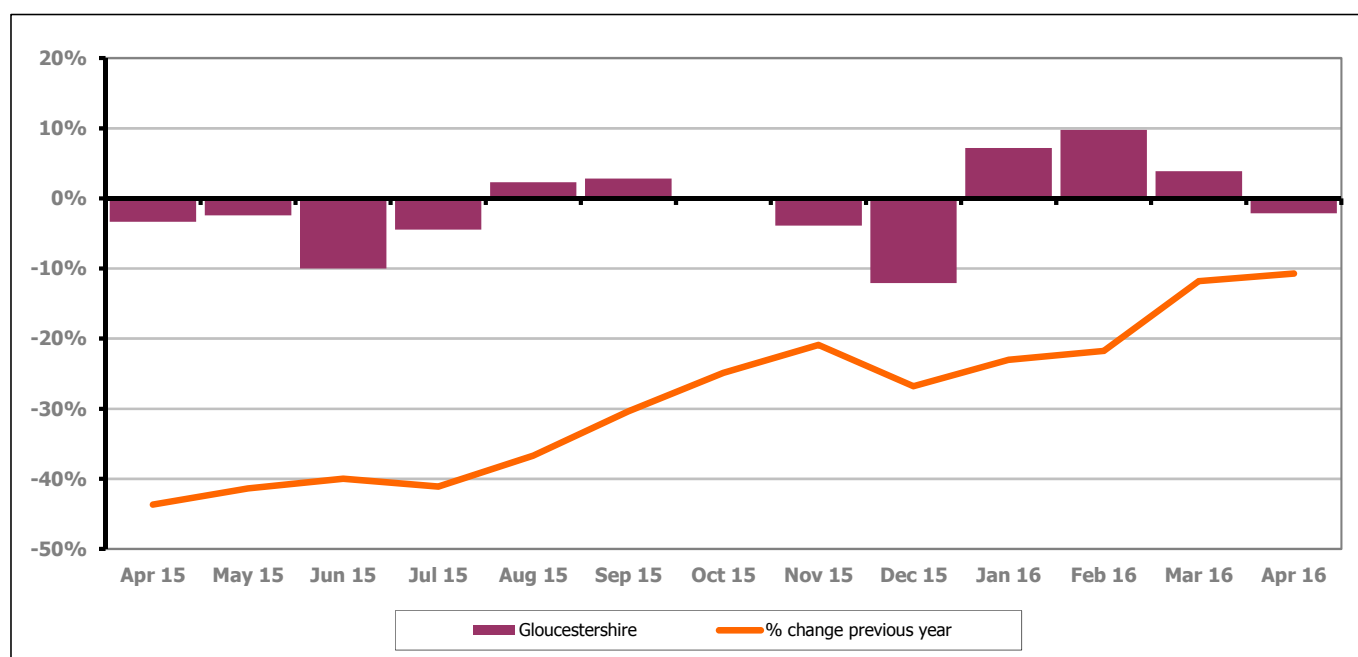


Figure 23 shows the number of young claimants decreased in April 2016 by 2.1% this represented 20 people. Over the last year the number of young claimants fell by 10.7% or 110 people.

PART 7: YOUNG PEOPLE NOT IN EDUCATION, EMPLOYMENT OR TRAINING (NEET) IN GLOUCESTERSHIRE

Data provided by Gloucestershire Youth Support Team on the situation of young people (16-18) in Gloucestershire who are not in education, employment or formal training.

Gloucestershire Youth Support Team is required to report performance with the 16-18 age range against nationally defined criteria for counting the NEET group. The NEET group includes young people actively seeking education, employment or training as well as those young people who are either not yet ready or who are unable to access these opportunities because of their personal circumstances. The figures quoted below include young people in both of these categories.

Summary

At the end of April 2016 there were 446 young people aged 16-18 not in education, employment or training in Gloucestershire and this figure translates into an adjusted (*) 16-18 NEET population of 3.16%. The total number of NEET young people decreased by 13 in April 2016 compared to March 2016, five districts saw a decrease in their figure and one district saw an increase.

Total NEET Group by District Area

April 2016 NEET data

	Cheltenham	Cotswold	Forest	Gloucester	Stroud	Tewkesbury	Total
Total NEET	74	34	66	146	71	55	446
Cohort	2556	2048	2108	3614	3071	2122	15519
% NEET	2.90	1.66	3.13	4.04	2.31	2.59	3.16*

If you would like to receive any further information on Gloucestershire's NEET strategy then please contact Ruth.Critchlow@Prospects.co.uk or telephone 01452 426900.

(*) Adjustment includes a proportion of young people aged 16-18 whose outcomes are not known to Gloucestershire Youth Support Team.