

Unemployment Bulletin

Issue 170 September 2022

Notes on Claimant Count (Experimental Statistics) from ONS:

These Claimant Count Experimental Statistics relate to 8 September 2022. Enhancements to Universal Credit as part of the UK government's response to the coronavirus (COVID-19) mean that an increasing number of people became eligible for unemployment-related benefit support, although still employed. Consequently changes in the Claimant Count will not be wholly because of changes in the number of people who are unemployed. We are not able to identify to what extent people who are employed or unemployed have affected the numbers.

Contents

Part 1: Summary	1
A summary of unemployment data at district, County, regional and national level	
Part 2: County	3
Unemployment figures for the County compared to the South West and the rest of the UK	
Part 3: Districts	4
A comparative break down of unemployment figures by district	
Part 4: Wards	
Further breakdown of unemployment figures by ward:	
Cheltenham	6
Cotswolds	8
Forest of Dean	10
Gloucester	12
Stroud	14
Tewkesbury	16
Part 5: Map	18
Distribution of claimant rate across Gloucestershire	
Part 6: Youth Unemployment	20
Unemployment data for the 18-24 year old age group	
Part 7: Young People	21
Data about Young People Not in Education, Employment or Training (NEET)	

The Claimant Count is a measure of the number of people who are unemployed and claiming benefits. From 1996 until the recent introduction of Universal Credit, this was based on the number of people claiming Jobseeker's Allowance. However, since its introduction some unemployment benefit claimants will be claiming Universal Credit instead. **To reflect this change, the Claimant Count has been expanded to include people claiming Jobseeker's Allowance plus those who claim Universal Credit and who are searching for work.**

Gloucestershire is in the process of transitioning to full Universal Credit. This means a broader span of claimants will be required to look for work than previously under Jobseekers Allowance. As more people are brought within the coverage of Universal Credit, the Claimant Count is set to rise noticeably over time. This will happen irrespective of how the economy performs and is a feature of the design of Universal Credit which brings additional groups of people into 'Searching for Work' conditionality (and therefore the Claimant Count), to help encourage and support these claimants into work.

For more information about Universal Credit please see the [ONS website](https://www.ons.gov.uk/universal-credit).

INTRODUCTION

The Unemployment Bulletin provides a monthly update on unemployment data for Gloucestershire, the South West region and the United Kingdom. It is produced by the Data & Analysis Team in the County Council's Planning, Performance and Change function. The data are sourced from the Office for National Statistics via Nomis (www.nomis.co.uk). All data are rounded to the nearest 5 and may not precisely add to the sum of the number of people claiming JSA, and the number of people claiming Universal Credit required to seek work, due to independent rounding.

PART 1: SUMMARY

The claimant rate in Gloucestershire was 2.2% in September 2022. The South West rate remained at 2.5% and the UK rate increased to 3.7%. Gloucestershire's rate was 0.3% lower than the South West average of 2.5%, and 1.5% lower than the UK average of 3.7%.

The claimant count in Gloucestershire in September 2022 decreased by 20 people. The amount of people claiming in September 2022 was 0.2% lower than the number in August 2022. This compares to a 0.5% increase in the South West and a 0.9% increase in the UK.

Produced by:

Data & Analysis Team
Planning, Performance and Change
Gloucestershire County Council
October 2022

DISTRICTS AT A GLANCE

At a glance unemployment information grouped by district. Includes:

Claimant count: Total number of people claiming Job Seekers Allowance and Universal Credit who are not in work in September 2022

Claimant count change on previous month: How much larger/smaller September's claimant count is compared to August expressed as a %

Claimant rate: The % of working age population claiming Job Seekers Allowance and Universal Credit who are not in work in September 2022

Highest claiming ward: The ward with the highest claim count in that district and the rate

CHELTEMHAM BOROUGH

Claimant count:	1,760
Claimant count change on previous month:	-0.6%
Claimant rate:	2.4%
Highest claiming ward(s)	Oakley (4.8%)

GLOUCESTER CITY

Claimant count:	2,555
Claimant count change on previous month:	-1.7%
Claimant rate:	3.1%
Highest claiming ward(s)	Barton and Tredworth (6.7%)

COTSWOLD DISTRICT

Claimant count:	900
Claimant count change on previous month:	0.6%
Claimant rate:	1.7%
Highest claiming ward(s)	Watermoor (3.6%)

STROUD DISTRICT

Claimant count:	1,105
Claimant count change on previous month:	1.4%
Claimant rate:	1.5%
Highest claiming ward(s)	Stroud Slade (3.3%)

FOREST OF DEAN

Claimant count:	1,190
Claimant count change on previous month:	0.4%
Claimant rate:	2.3%
Highest claiming ward(s)	Lydney East (4.6%)

TEWKESBURY BOROUGH

Claimant count:	1,035
Claimant count change on previous month:	1.0%
Claimant rate:	1.8%
Highest claiming ward(s)	Tewkesbury South (3.6%)

PART 2: UK, SW AND GLOUCESTERSHIRE INDICATORS

The unemployment situation in Gloucestershire compared to the South West and the UK.

Claimant Rate

Figure 1: Claimant Rate for Gloucestershire, the South West and UK over the past year

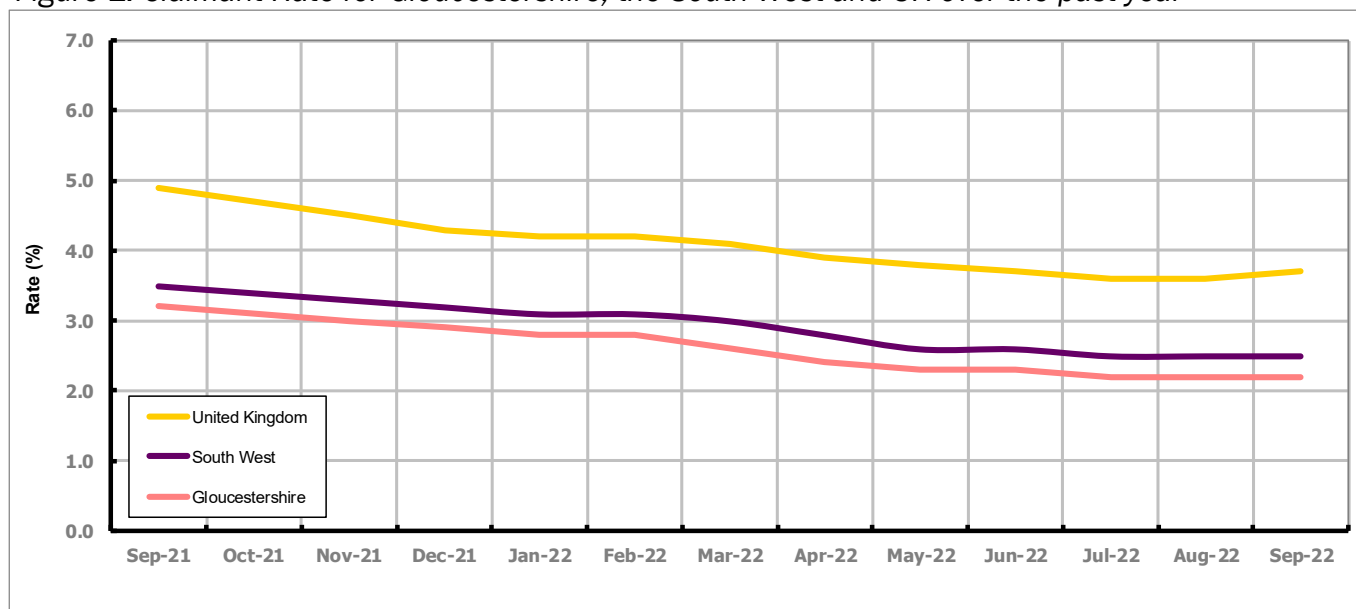


Figure 1 shows the claimant rate for Gloucestershire at 2.2% in September 2022. The Gloucestershire rate has been lower than the South West average since December 2015, with the exception of April and May 2016 when it was the same. On average, it has been approximately 1.5% lower than the UK average since the same month of the previous year.

Claimant Count

Table 1: Analysis of UK, South West and Gloucestershire Claimant Counts

Area	Claimant Count in September 2022	% change on August 2022	Consecutive months increasing
UK	1,533,175	0.9%	0
South West	84,625	0.5%	0
Gloucestershire	8,545	-0.2%	0

Table 1 shows that in September 2022, the number of claimants in Gloucestershire was 0.2% lower than the number in August 2022.

PART 3: LOCAL AUTHORITY DISTRICT ANALYSIS

Claimant Rate and Claimant Count

Figure 2: Claimant Rate (%) across Gloucestershire - September 2022

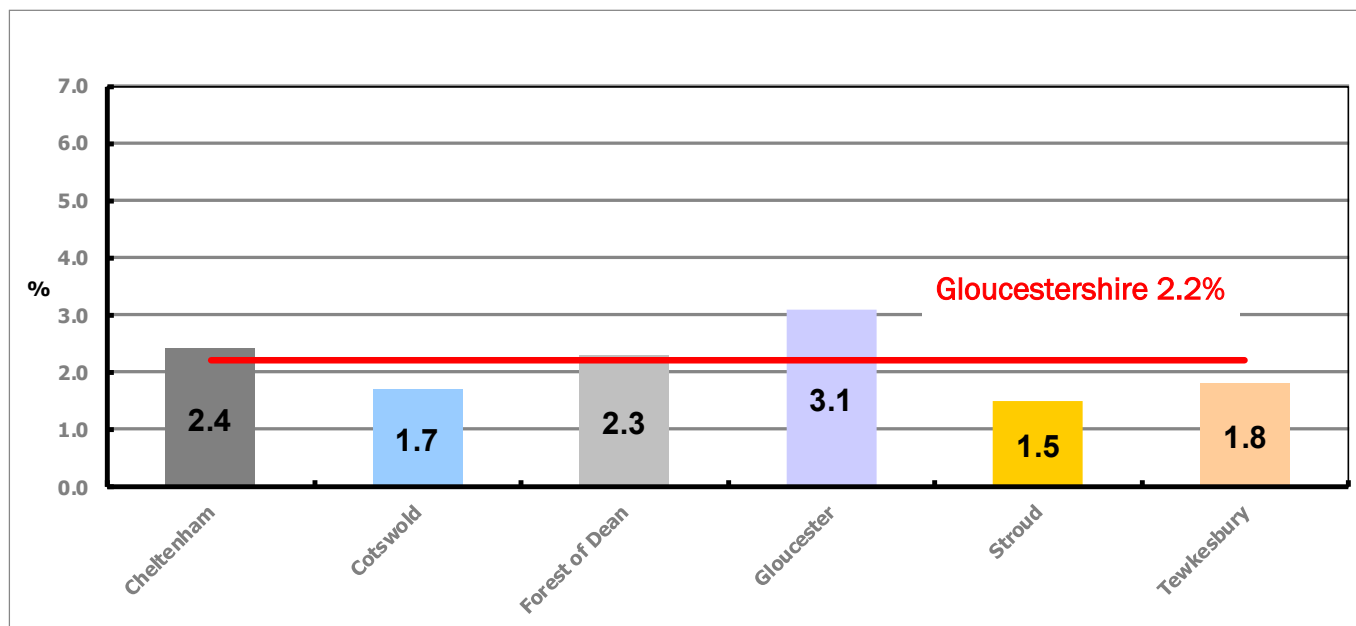


Figure 2 shows the claimant rate for September 2022 in Gloucestershire. Between August and September 2022 the rate remained constant in all districts except Gloucester which saw a decrease.

Table 2: Analysis of Gloucestershire and District Claimant Counts

Total	Sep 22 Number	Sep 22 Rate	Aug 22 Number	Aug 22 Rate	Monthly change	% monthly change	Monthly change of rate
Gloucestershire	8,545	2.2	8,565	2.2	-20	-0.2%	0.0
Cheltenham	1,760	2.4	1,770	2.4	-10	-0.6%	0.0
Cotswold	900	1.7	895	1.7	5	0.6%	0.0
Forest of Dean	1,190	2.3	1,185	2.3	5	0.4%	0.0
Gloucester	2,555	3.1	2,600	3.2	-45	-1.7%	-0.1
Stroud	1,105	1.5	1,090	1.5	15	1.4%	0.0
Tewkesbury	1,035	1.8	1,025	1.8	10	1.0%	0.0

Table 2 shows the change in the claimant count in September 2022 compared to August 2022. All districts saw an increase in the number of claimants except Cheltenham and Gloucester which saw a decrease.

Table 3: Analysis of Male Gloucestershire and District Claimant Counts

Male	Sep 22 Number	Sep 22 Rate	Aug 22 Number	Aug 22 Rate	Monthly change	% monthly change	Monthly change of rate
Gloucestershire	4,785	2.5	4,790	2.5	-5	-0.1%	0.0
Cheltenham	1,055	2.9	1,065	2.9	-10	-0.9%	0.0
Cotswold	455	1.8	440	1.7	15	3.4%	0.1
Forest of Dean	640	2.5	640	2.5	0	0.0%	0.0
Gloucester	1,525	3.7	1,540	3.8	-15	-1.0%	-0.1
Stroud	565	1.6	565	1.6	0	0.0%	0.0
Tewkesbury	540	1.9	540	1.9	0	0.0%	0.0

Table 3 shows the change in the male claimant count in September 2022 compared to August 2022. All districts saw the same the number of male claimants as last month except Cheltenham and Gloucester which saw a decrease, and Cotswold which saw an increase.

Table 4: Analysis of Female Gloucestershire and District Claimant Counts

Female	Sep 22 Number	Sep 22 Rate	Aug 22 Number	Aug 22 Rate	Monthly change	% monthly change	Monthly change of rate
Gloucestershire	3,760	1.9	3,775	1.9	-15	-0.4%	0.0
Cheltenham	705	2.0	705	2.0	0	0.0%	0.0
Cotswold	445	1.7	455	1.7	-10	-2.2%	0.0
Forest of Dean	550	2.1	550	2.1	0	0.0%	0.0
Gloucester	1,030	2.5	1,060	2.6	-30	-2.8%	-0.1
Stroud	540	1.5	525	1.4	15	2.9%	0.1
Tewkesbury	495	1.7	485	1.7	10	2.1%	0.0

Table 4 shows the change in the female claimant count in September 2022 compared to August 2022. Stroud and Tewkesbury saw an increase in the number of female claimants while Cotswold and Gloucester saw a decrease. Cheltenham and Forest of Dean remained the same as last month.

PART 4: LOCAL AUTHORITY DISTRICT AND WARD ANALYSIS

This section covers the six districts and a comparison of their constituent wards.

4.1 Cheltenham Borough

Claimant Rate and Claimant Count

Figure 3: Cheltenham Borough claimant rate over the last year

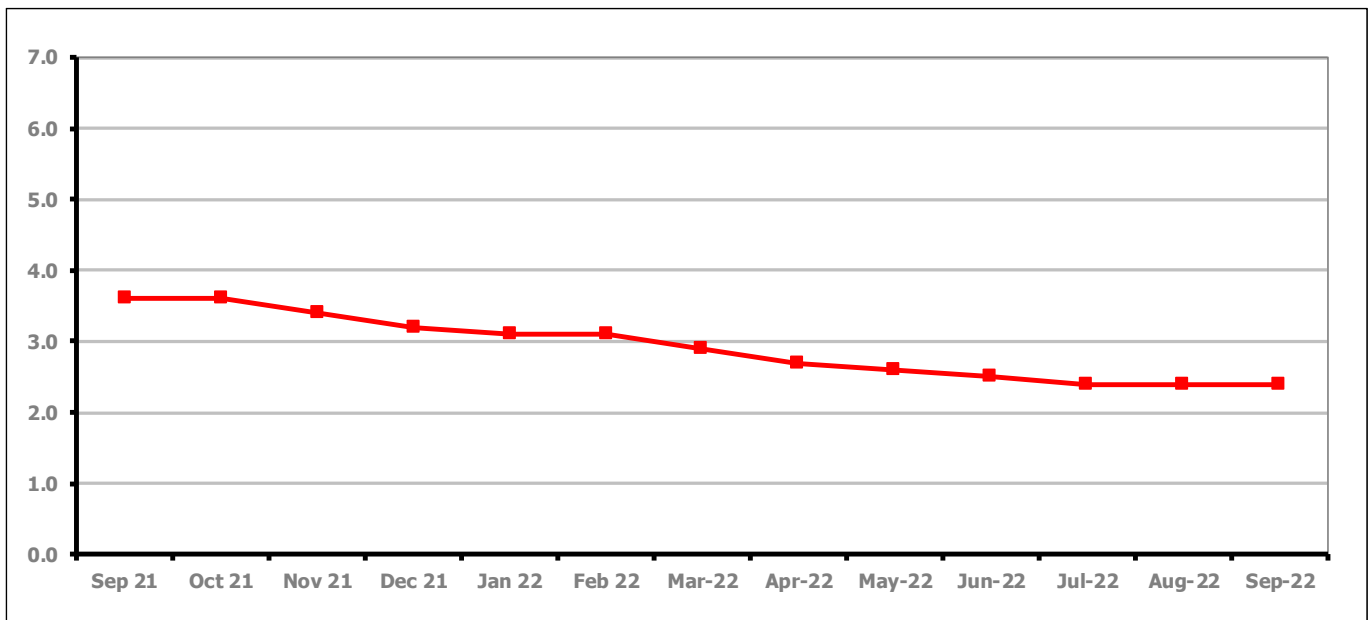


Figure 3 shows the claimant rate in Cheltenham remained at 2.4% in September 2022.

Figure 4: Claimant rates across Cheltenham Borough wards - September 2022

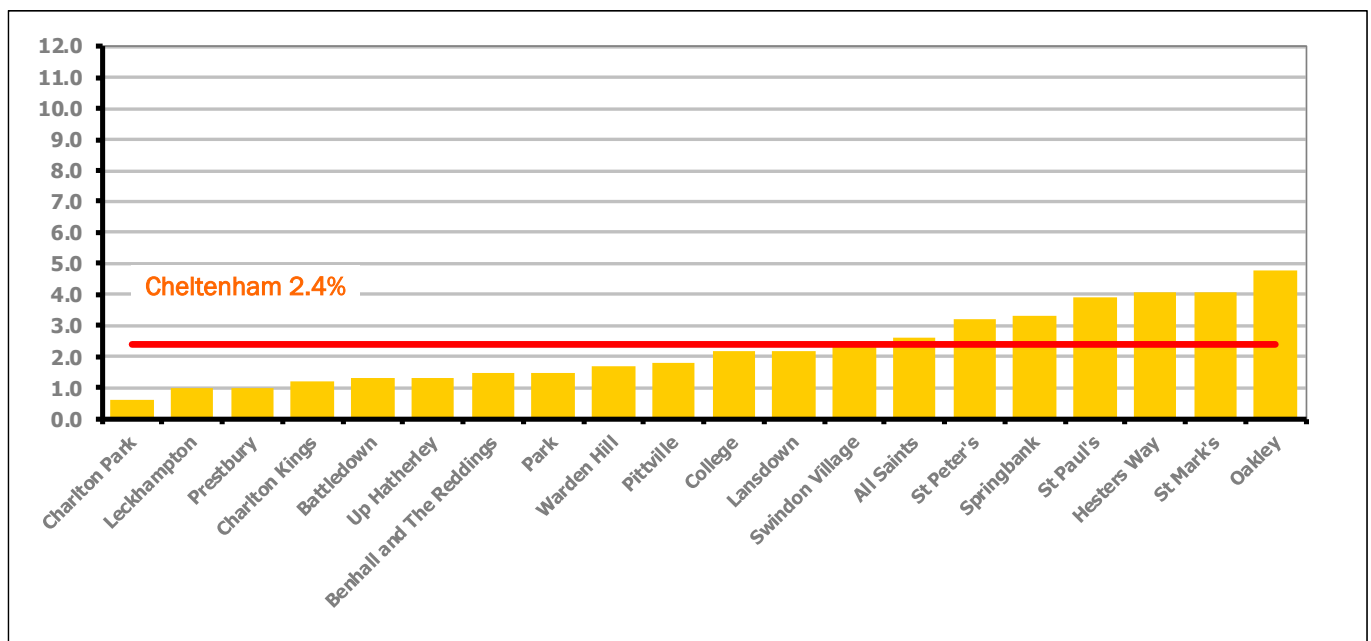


Figure 4 shows the claimant rates for Cheltenham Borough wards. The red line represents the average claimant rate across the Borough of 2.4%. Eight wards lie above the average.

PART 4: LOCAL AUTHORITY DISTRICT AND WARD ANALYSIS**4.1 Cheltenham Borough continued...***Table 5: Analysis of Claimant Count at Cheltenham Borough ward level - September 2022*

District	Ward	Rate	Rank*
Cheltenham	Charlton Park	0.6	1
Cheltenham	Leckhampton	1.0	6
Cheltenham	Prestbury	1.0	6
Cheltenham	Charlton Kings	1.2	18
Cheltenham	Battledown	1.3	29
Cheltenham	Up Hatherley	1.3	29
Cheltenham	Benhall and The Reddings	1.5	45
Cheltenham	Park	1.5	45
Cheltenham	Warden Hill	1.7	63
Cheltenham	Pittville	1.8	74
Cheltenham	College	2.2	97
Cheltenham	Lansdown	2.2	97
Cheltenham	Swindon Village	2.5	107
Cheltenham	All Saints	2.6	111
Cheltenham	St Peter's	3.2	120
Cheltenham	Springbank	3.3	121
Cheltenham	St Paul's	3.9	127
Cheltenham	Hesters Way	4.1	129
Cheltenham	St Mark's	4.1	129
Cheltenham	Oakley	4.8	135

	lowest 10% of county
	first quartile of county
	second quartile of county
	third quartile of county
	fourth quartile of county
	highest 10% of county

* 1 = "best" and 138 = "worst"

Table 5 shows overall claimant rates for Cheltenham Borough wards and their position relative to all wards in Gloucestershire.

PART 4: LOCAL AUTHORITY DISTRICT AND WARD ANALYSIS

4.2 Cotswold District

Claimant Rate and Claimant Count

Figure 5: Cotswold District claimant rate over the last year

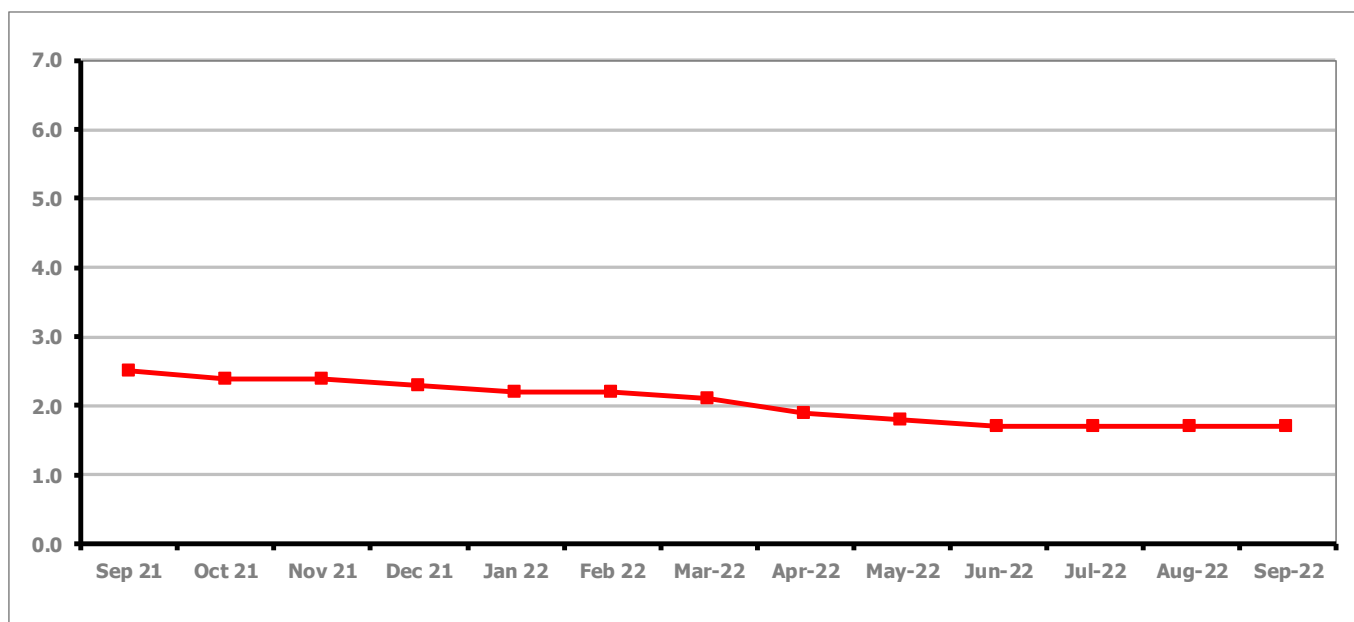


Figure 5 shows the claimant rate in Cotswold District remained at 1.7% in September 2022.

Figure 6: Claimant rates across Cotswold District wards - September 2022

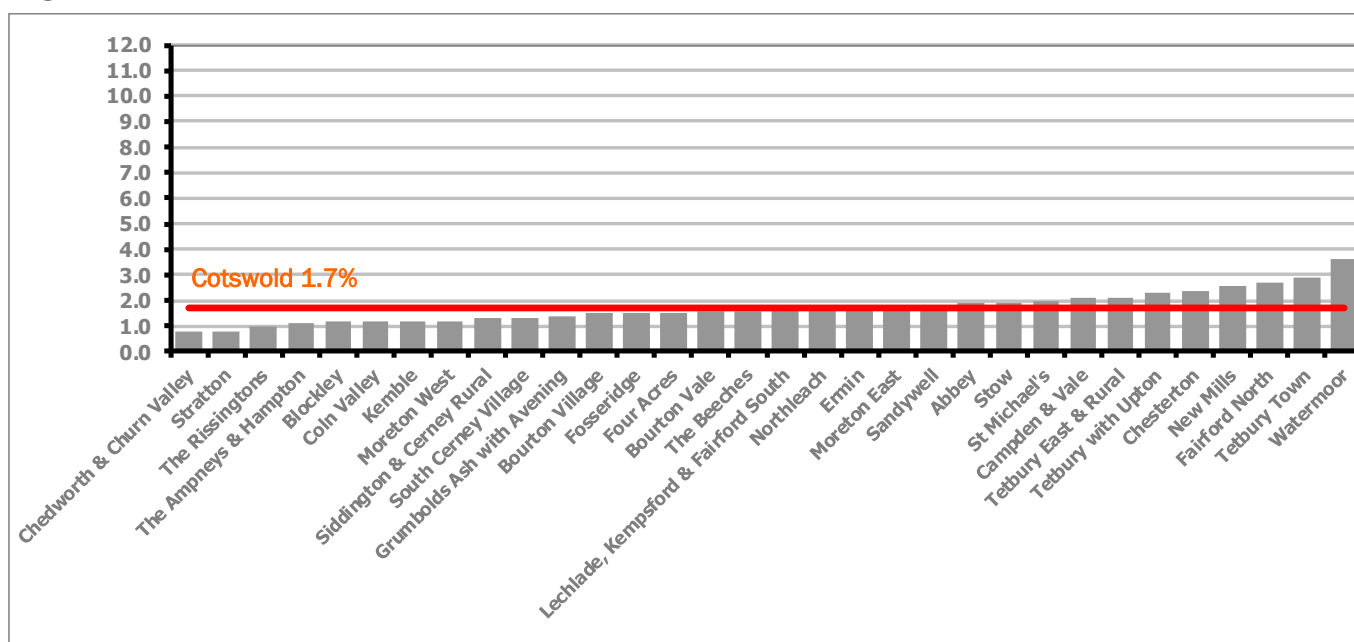


Figure 6 shows the claimant rates for Cotswold District wards. The red line represents the average claimant rate across the District of 1.7%. Fourteen wards lie above the average.

PART 4: LOCAL AUTHORITY DISTRICT AND WARD ANALYSIS

4.2 Cotswold District continued...

Table 6: Analysis of Claimant Count at Cotswold District ward level - September 2022

District	Ward	Rate	Rank*
Cotswolds	Chedworth & Churn Valley	0.8	3
Cotswolds	Stratton	0.8	3
Cotswolds	The Rissingtons	1.0	6
Cotswolds	The Ampneys & Hampton	1.1	11
Cotswolds	Blockley	1.2	18
Cotswolds	Coln Valley	1.2	18
Cotswolds	Kemble	1.2	18
Cotswolds	Moreton West	1.2	18
Cotswolds	Siddington & Cerney Rural	1.3	29
Cotswolds	South Cerney Village	1.3	29
Cotswolds	Grumbolds Ash with Avening	1.4	40
Cotswolds	Bourton Village	1.5	45
Cotswolds	Fosseridge	1.5	45
Cotswolds	Four Acres	1.5	45
Cotswolds	Bourton Vale	1.6	57
Cotswolds	The Beeches	1.6	57
Cotswolds	Lechlade, Kempsford & Fairford South	1.7	63
Cotswolds	Northleach	1.7	63
Cotswolds	Ermin	1.8	74
Cotswolds	Moreton East	1.8	74
Cotswolds	Sandywell	1.8	74
Cotswolds	Abbey	1.9	82
Cotswolds	Stow	1.9	82
Cotswolds	St Michael's	2.0	88
Cotswolds	Campden & Vale	2.1	91
Cotswolds	Tetbury East & Rural	2.1	91
Cotswolds	Tetbury with Upton	2.3	100
Cotswolds	Chesterton	2.4	103
Cotswolds	New Mills	2.6	111
Cotswolds	Fairford North	2.7	114
Cotswolds	Tetbury Town	2.9	117
Cotswolds	Watermoor	3.6	125

	lowest 10% of county
	first quartile of county
	second quartile of county
	third quartile of county
	fourth quartile of county
	highest 10% of county

* 1 = "best" and 138 = "worst"

Table 6 shows overall claimant rates for Cotswold District wards and their position relative to all wards in Gloucestershire.

PART 4: LOCAL AUTHORITY DISTRICT AND WARD ANALYSIS

4.3 Forest of Dean District

Claimant Rate and Claimant Count

Figure 7: Forest of Dean District claimant rate over the last year

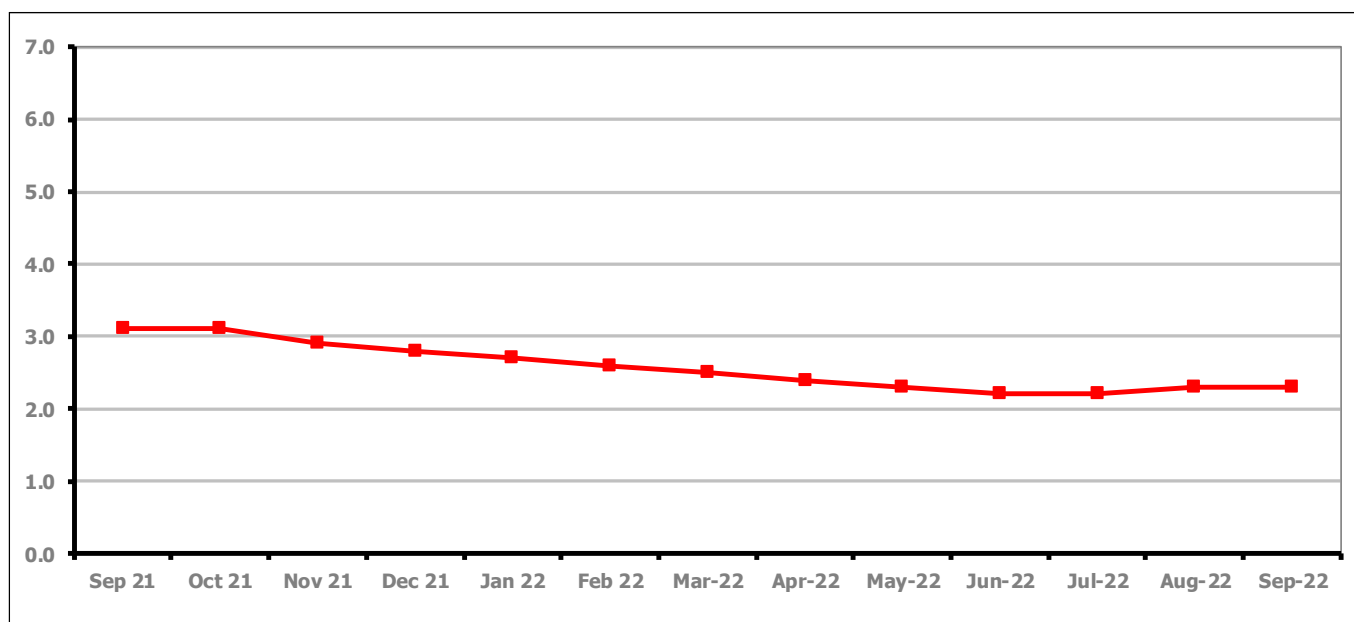


Figure 7 shows the claimant rate in the Forest of Dean remained at 2.3% in September 2022.

Figure 8: Claimant rates across Forest of Dean District wards - September 2022

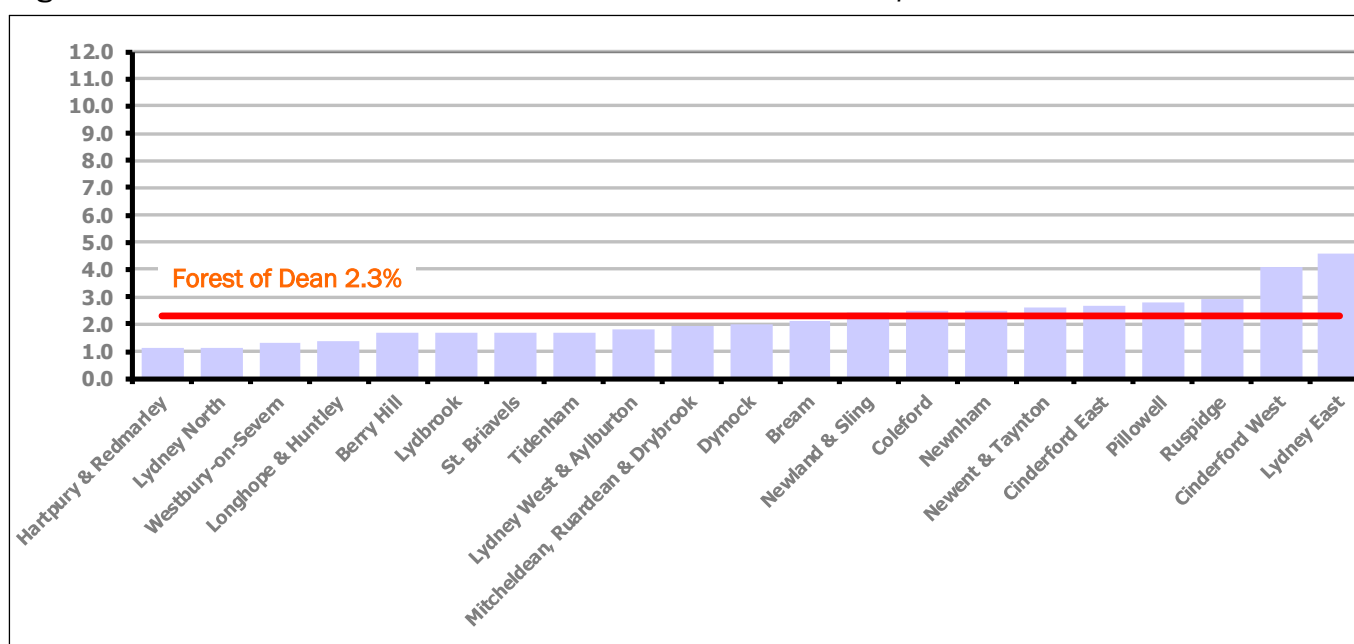


Figure 8 shows the claimant rates for the Forest of Dean District wards. The red line represents the average claimant rate across the District of 2.3%. Nine wards lie above the average.

PART 4: LOCAL AUTHORITY DISTRICT AND WARD ANALYSIS**4.3 Forest of Dean District continued...***Table 7: Analysis of Claimant Count at Forest of Dean District ward level - September 2022*

District	Ward	Rate	Rank*
Forest	Hartpury & Redmarley	1.1	11
Forest	Lydney North	1.1	11
Forest	Westbury-on-Severn	1.3	29
Forest	Longhope & Huntley	1.4	40
Forest	Berry Hill	1.7	63
Forest	Lydbrook	1.7	63
Forest	St. Briavels	1.7	63
Forest	Tidenham	1.7	63
Forest	Lydney West & Aylburton	1.8	74
Forest	Mitcheldean, Ruardean & Drybrook	1.9	82
Forest	Dymock	2.0	88
Forest	Bream	2.1	91
Forest	Newland & Sling	2.4	103
Forest	Coleford	2.5	107
Forest	Newnham	2.5	107
Forest	Newent & Taynton	2.6	111
Forest	Cinderford East	2.7	114
Forest	Pillowell	2.8	116
Forest	Ruspidge	2.9	117
Forest	Cinderford West	4.1	129
Forest	Lydney East	4.6	134

	lowest 10% of county
	first quartile of county
	second quartile of county
	third quartile of county
	fourth quartile of county
	highest 10% of county

* 1 = "best" and 138 = "worst"

Table 7 shows overall claimant rates for the Forest of Dean District wards and their position relative to all wards in Gloucestershire.

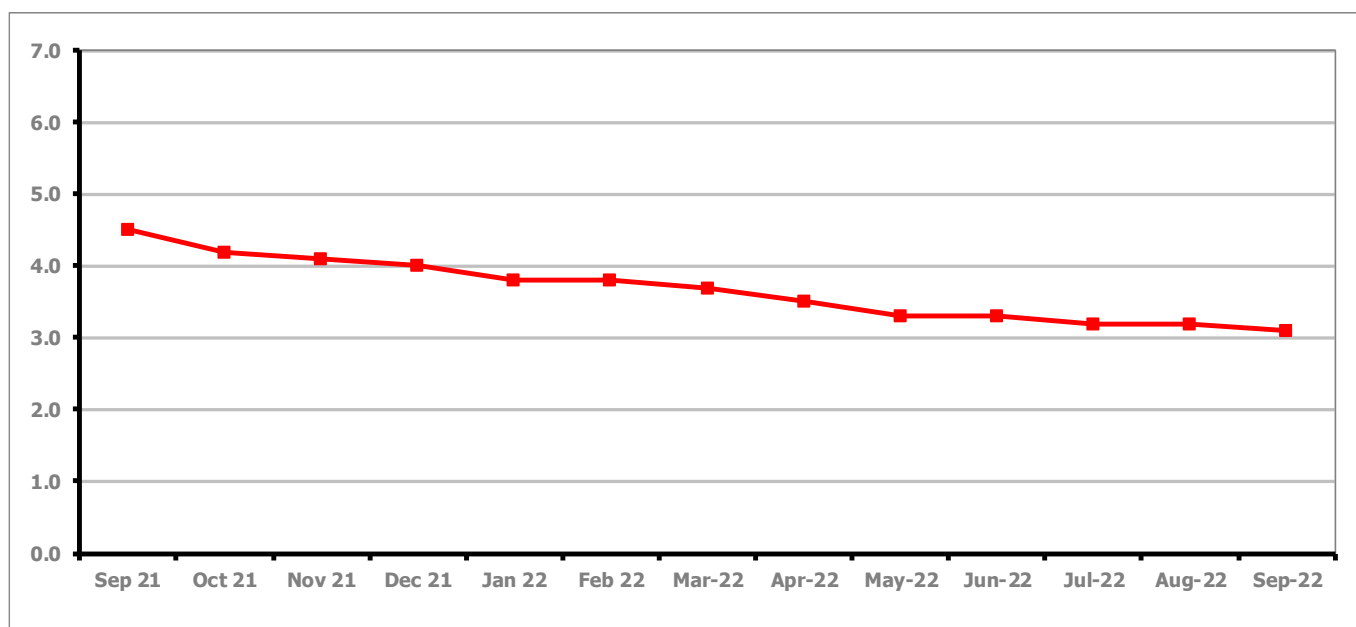
PART 4: LOCAL AUTHORITY DISTRICT AND WARD ANALYSIS**4.4 Gloucester City****Claimant Rate and Claimant Count***Figure 9: Gloucester City claimant rate over the last year*

Figure 9 shows the claimant rate for Gloucester City decreased to 3.1% in September 2022.

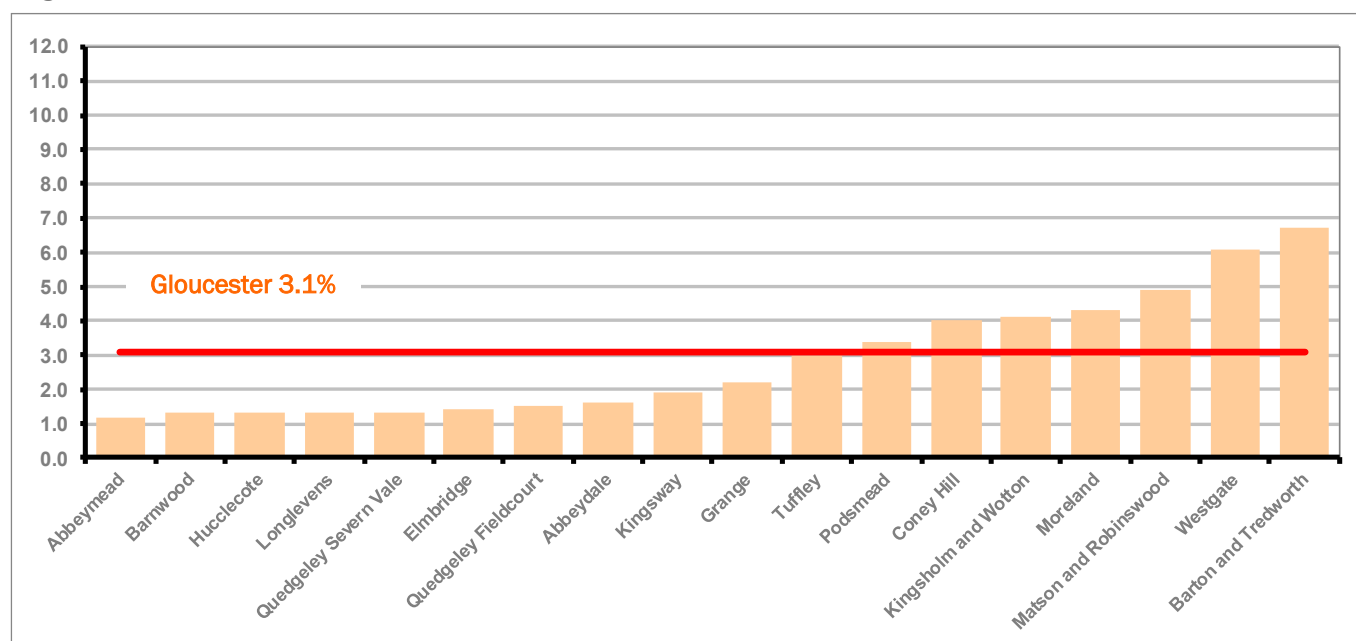
Figure 10: Claimant rates across Gloucester City wards - September 2022

Figure 10 shows the claimant rates for Gloucester City district wards. The red line represents the average claimant rate across the City of 3.1%. Seven wards lie above the average.

PART 4: LOCAL AUTHORITY DISTRICT AND WARD ANALYSIS

4.4 Gloucester City continued...

Table 8: Analysis of Claimant Count at Gloucester City ward level - September 2022

District	Ward	Rate	Rank*
Gloucester	Abbeymead	1.2	18
Gloucester	Barnwood	1.3	29
Gloucester	Hucclecote	1.3	29
Gloucester	Longlevens	1.3	29
Gloucester	Quedgeley Severn Vale	1.3	29
Gloucester	Elmbridge	1.4	40
Gloucester	Quedgeley Fieldcourt	1.5	45
Gloucester	Abbeydale	1.6	57
Gloucester	Kingsway	1.9	82
Gloucester	Grange	2.2	97
Gloucester	Tuffley	3.0	119
Gloucester	Podsmead	3.4	124
Gloucester	Coney Hill	4.0	128
Gloucester	Kingsholm and Wotton	4.1	129
Gloucester	Moreland	4.3	133
Gloucester	Matson and Robinswood	4.9	136
Gloucester	Westgate	6.1	137
Gloucester	Barton and Tredworth	6.7	138

	lowest 10% of county
	first quartile of county
	second quartile of county
	third quartile of county
	fourth quartile of county
	highest 10% of county

* 1 = "best" and 138 = "worst"

Table 8 shows overall claimant rates for Gloucester City wards and their position relative to all wards in Gloucestershire.

PART 4: LOCAL AUTHORITY DISTRICT AND WARD ANALYSIS

4.5 Stroud District

Claimant Rate and Claimant Count

Figure 11: Stroud District claimant rate over the last year

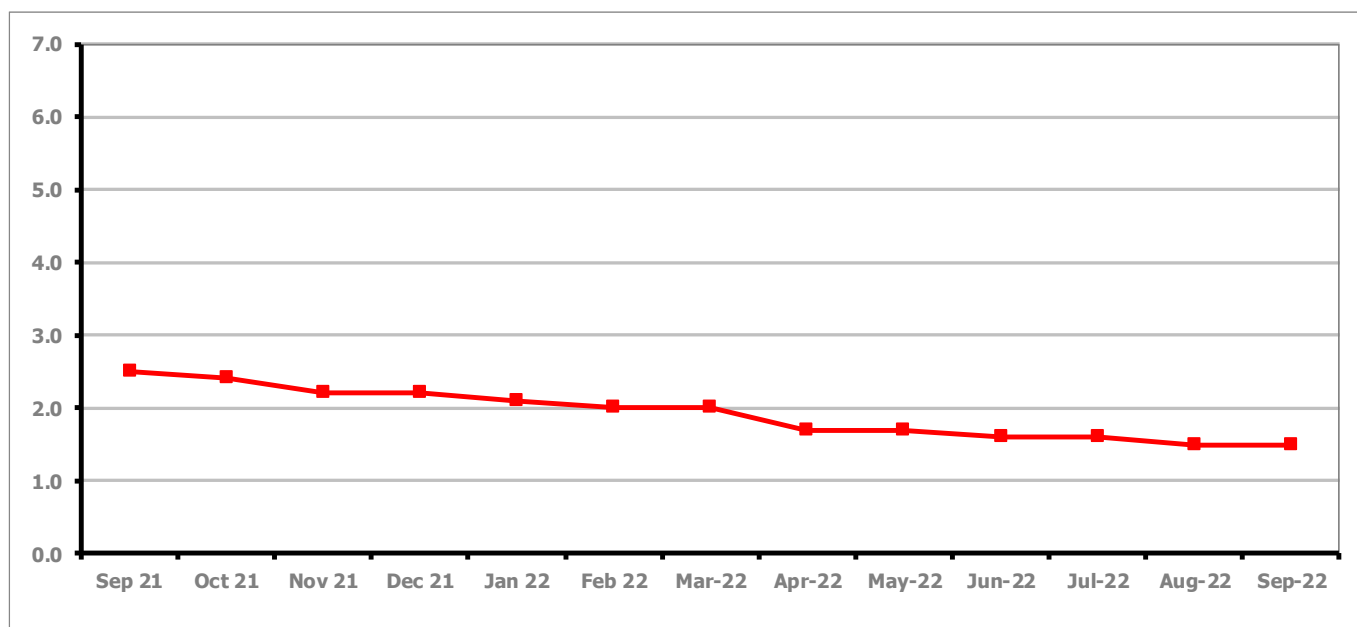


Figure 11 shows the claimant rate for Stroud remained at 1.5% in September 2022.

Figure 12: Claimant rates across Stroud District wards - September 2022

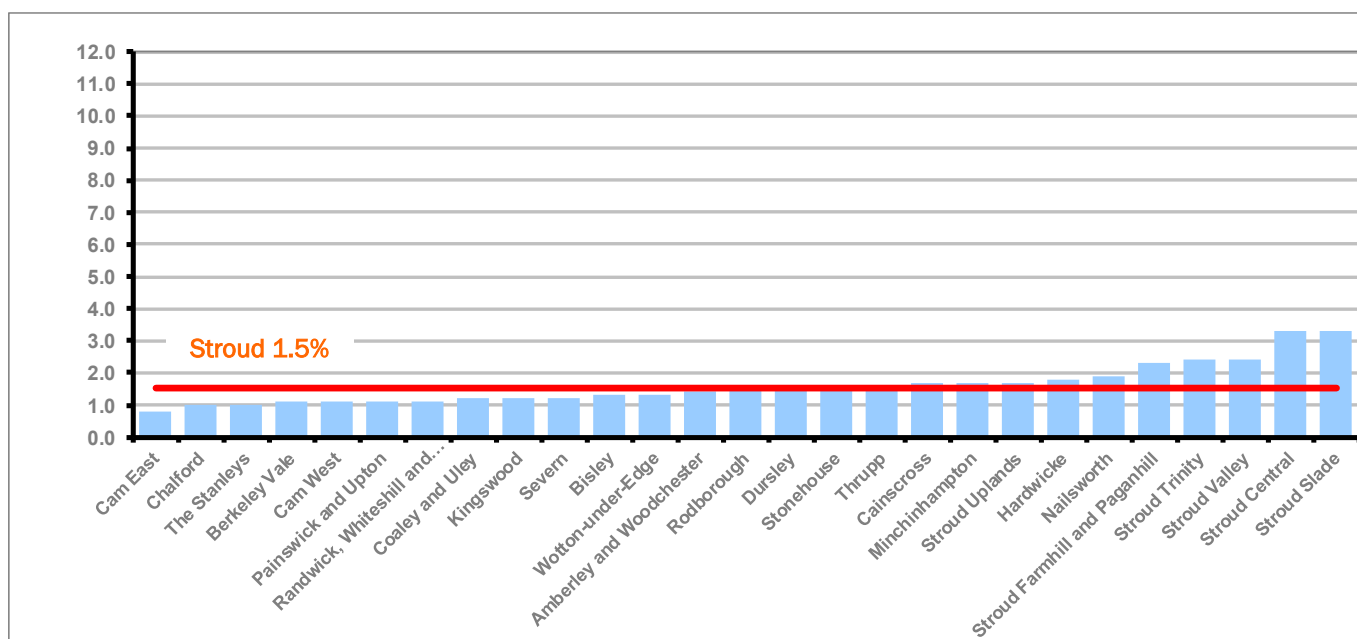


Figure 12 shows the claimant rates in Stroud District wards. The red line represents the average claimant rate across the District of 1.5%. Thirteen wards are above the average.

PART 4: LOCAL AUTHORITY AND DISTRICT ANALYSIS

4.5 Stroud District continued...

Table 9: Analysis of Claimant Count at Stroud District ward level - September 2022

District	Ward	Rate	Rank*
Stroud	Cam East	0.8	3
Stroud	Chalford	1.0	6
Stroud	The Stanleys	1.0	6
Stroud	Berkeley Vale	1.1	11
Stroud	Cam West	1.1	11
Stroud	Painswick and Upton	1.1	11
Stroud	Randwick, Whiteshill and Ruscombe	1.1	11
Stroud	Coaley and Uley	1.2	18
Stroud	Kingswood	1.2	18
Stroud	Severn	1.2	18
Stroud	Bisley	1.3	29
Stroud	Wotton-under-Edge	1.3	29
Stroud	Amberley and Woodchester	1.4	40
Stroud	Rodborough	1.5	45
Stroud	Dursley	1.6	57
Stroud	Stonehouse	1.6	57
Stroud	Thrupp	1.6	57
Stroud	Cainscross	1.7	63
Stroud	Minchinhampton	1.7	63
Stroud	Stroud Uplands	1.7	63
Stroud	Hardwicke	1.8	74
Stroud	Nailsworth	1.9	82
Stroud	Stroud Farmhill and Paganhill	2.3	100
Stroud	Stroud Trinity	2.4	103
Stroud	Stroud Valley	2.4	103
Stroud	Stroud Central	3.3	121
Stroud	Stroud Slade	3.3	121

	lowest 10% of county
	first quartile of county
	second quartile of county
	third quartile of county
	fourth quartile of county
	highest 10% of county

* 1 = "best" and 138 = "worst"

Table 9 shows overall claimant rates for Stroud District wards and their position relative to all wards in Gloucestershire.

PART 4: LOCAL AUTHORITY DISTRICT AND WARD ANALYSIS

4.6 Tewkesbury Borough

Claimant Rate and Claimant Count

Figure 13: Tewkesbury Borough claimant rate over the last year

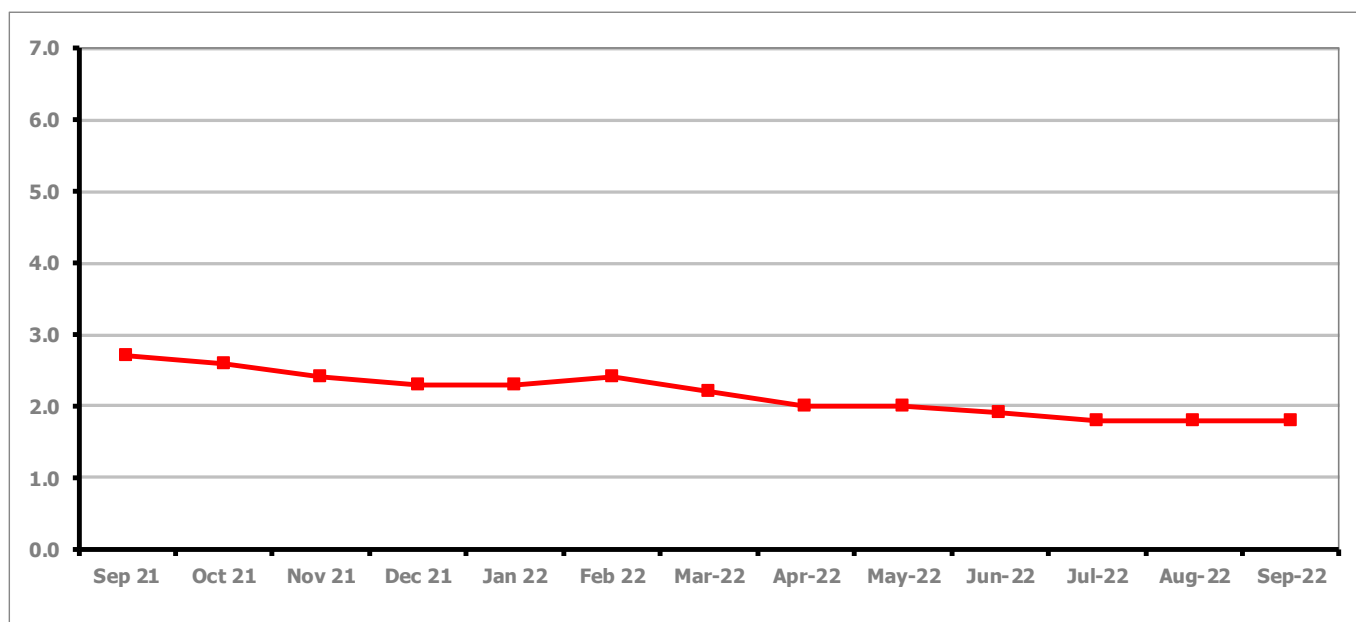


Figure 13 shows the claimant rate for Tewkesbury Borough remained at 1.8% in September 2022.

Figure 14: Claimant rates across Tewkesbury Borough wards - September 2022

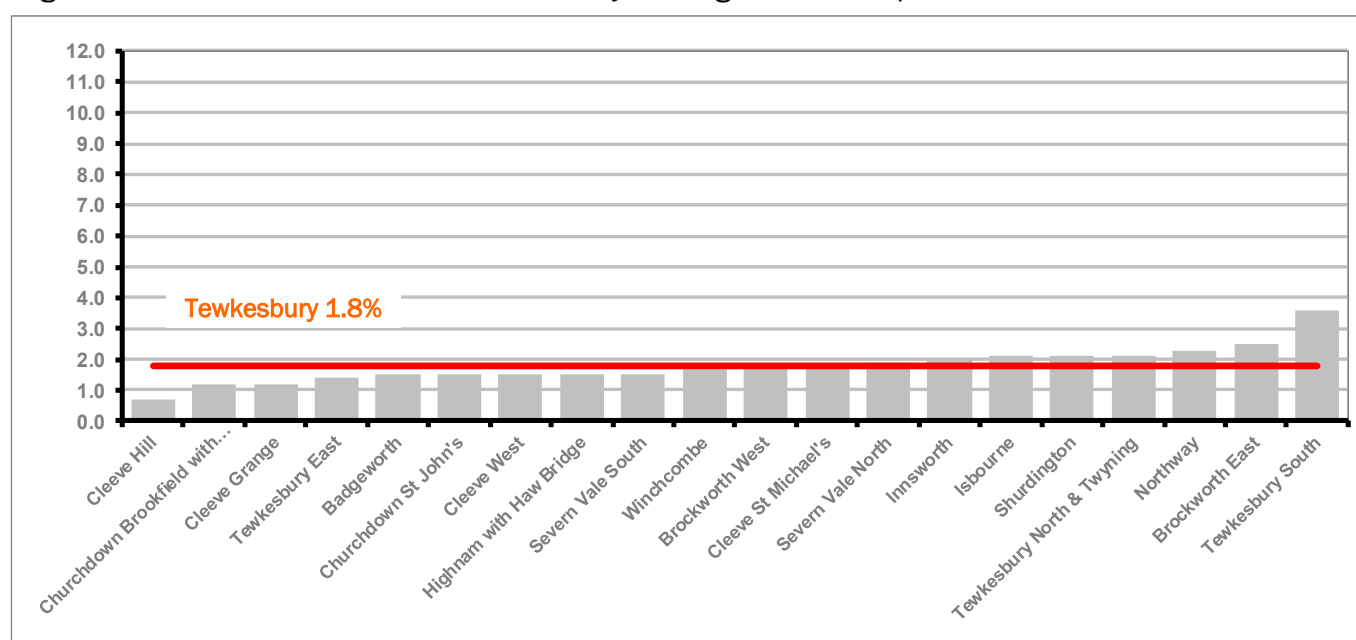


Figure 14 shows the claimant rates in Tewkesbury Borough wards. The red line represents the average claimant rate across the District of 1.8%. Eight wards are above the average.

PART 4: LOCAL AUTHORITY AND DISTRICT ANALYSIS

4.6 Tewkesbury Borough continued...

Table 10: Analysis of Claimant Count at Tewkesbury Borough level - September 2022

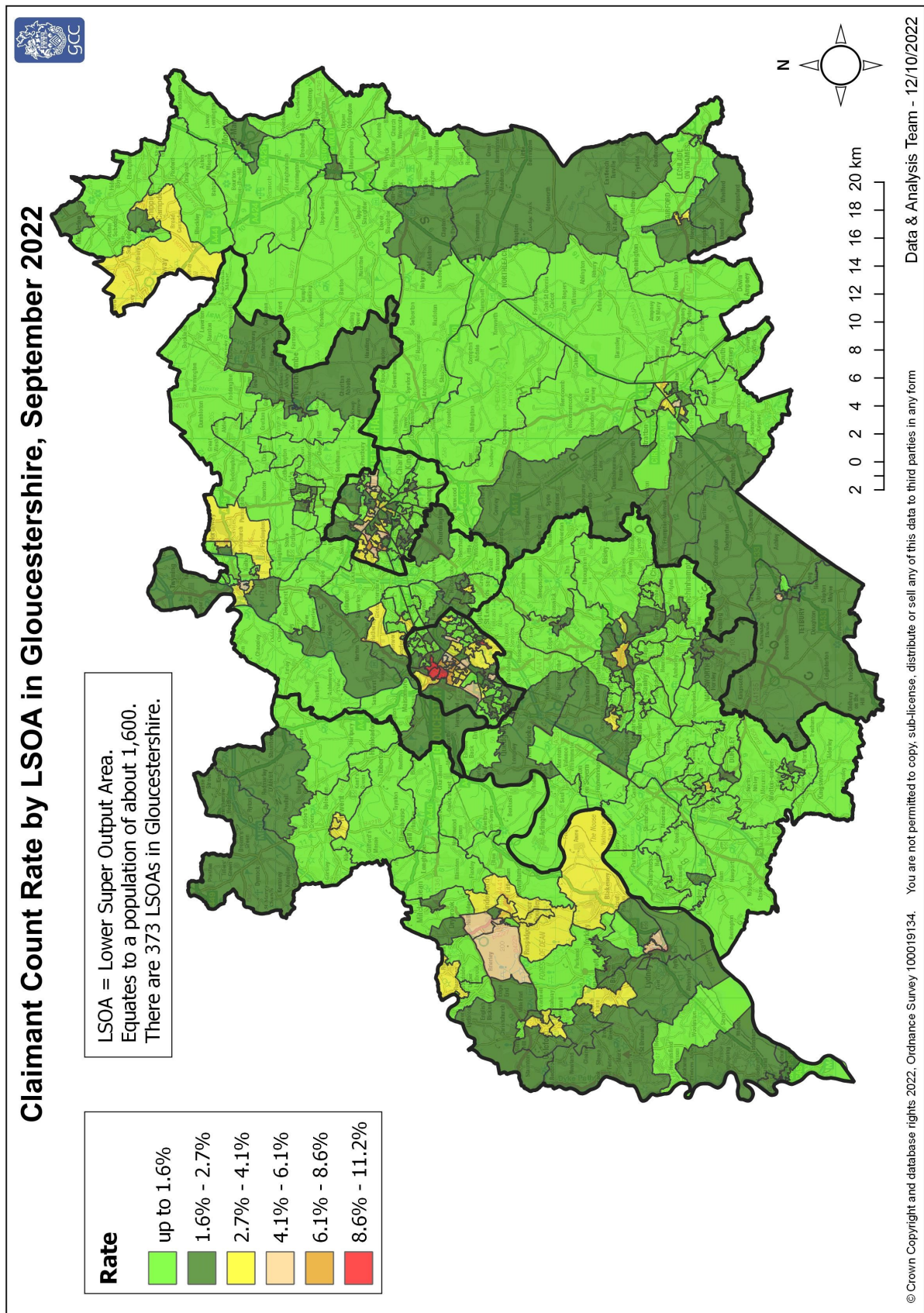
District	Ward	Rate	Rank*
Tewkesbury	Cleeve Hill	0.7	4
Tewkesbury	Severn Vale South	1.0	10
Tewkesbury	Churchdown Brookfield with Hucclecote	1.1	16
Tewkesbury	Badgeworth	1.2	27
Tewkesbury	Tewkesbury East	1.4	37
Tewkesbury	Cleeve Grange	1.5	45
Tewkesbury	Cleeve West	1.5	45
Tewkesbury	Severn Vale North	1.5	45
Tewkesbury	Churchdown St John's	1.6	58
Tewkesbury	Highnam with Haw Bridge	1.6	58
Tewkesbury	Cleeve St Michael's	1.8	73
Tewkesbury	Winchcombe	1.8	73
Tewkesbury	Brockworth West	2.0	87
Tewkesbury	Isbourne	2.0	87
Tewkesbury	Tewkesbury North & Twyning	2.0	87
Tewkesbury	Northway	2.1	95
Tewkesbury	Shurdington	2.2	98
Tewkesbury	Innsworth	2.3	100
Tewkesbury	Brockworth East	2.5	107
Tewkesbury	Tewkesbury South	3.6	125

	lowest 10% of county
	first quartile of county
	second quartile of county
	third quartile of county
	fourth quartile of county
	highest 10% of county

* 1 = "best" and 138 = "worst"

Table 10 shows overall claimant rates for Tewkesbury Borough wards and their position relative to all wards in Gloucestershire.

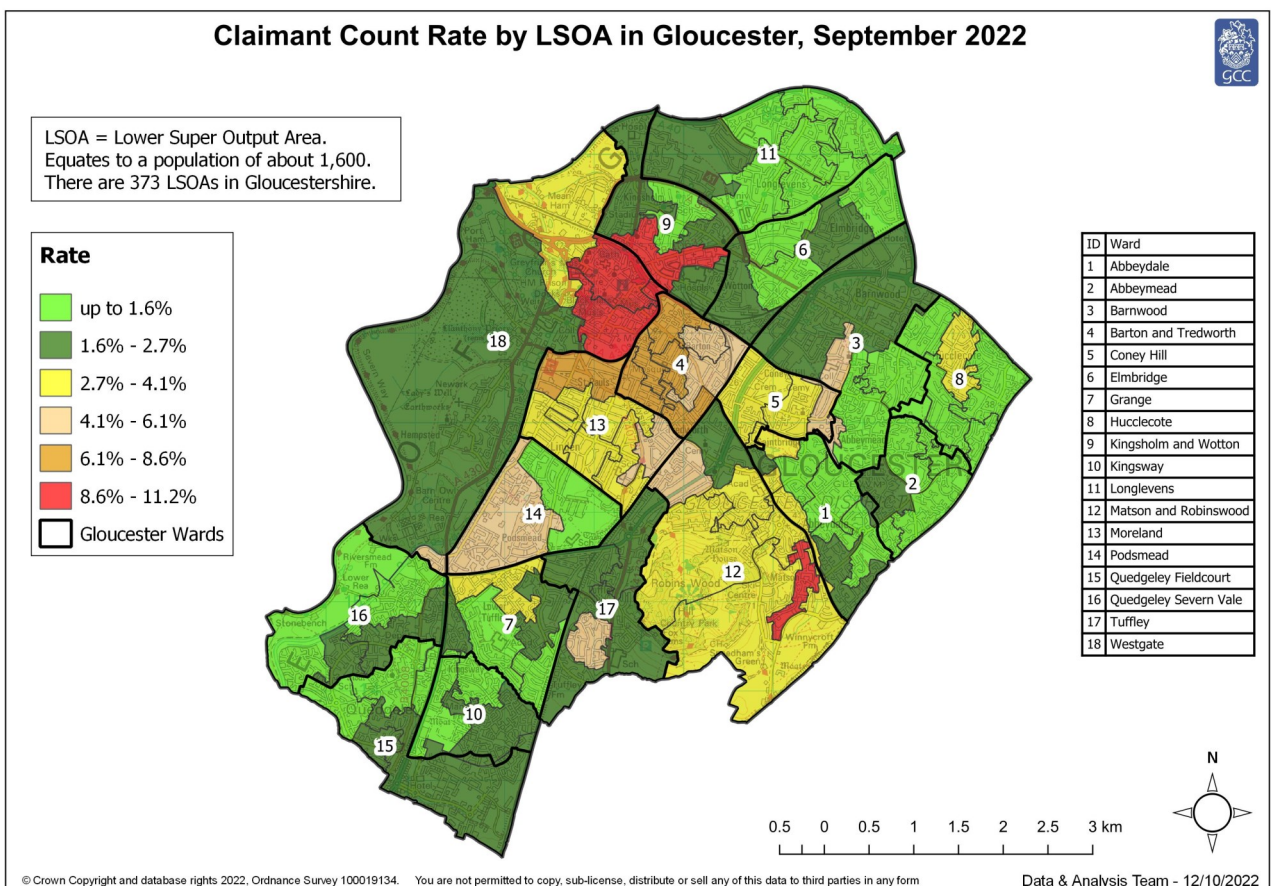
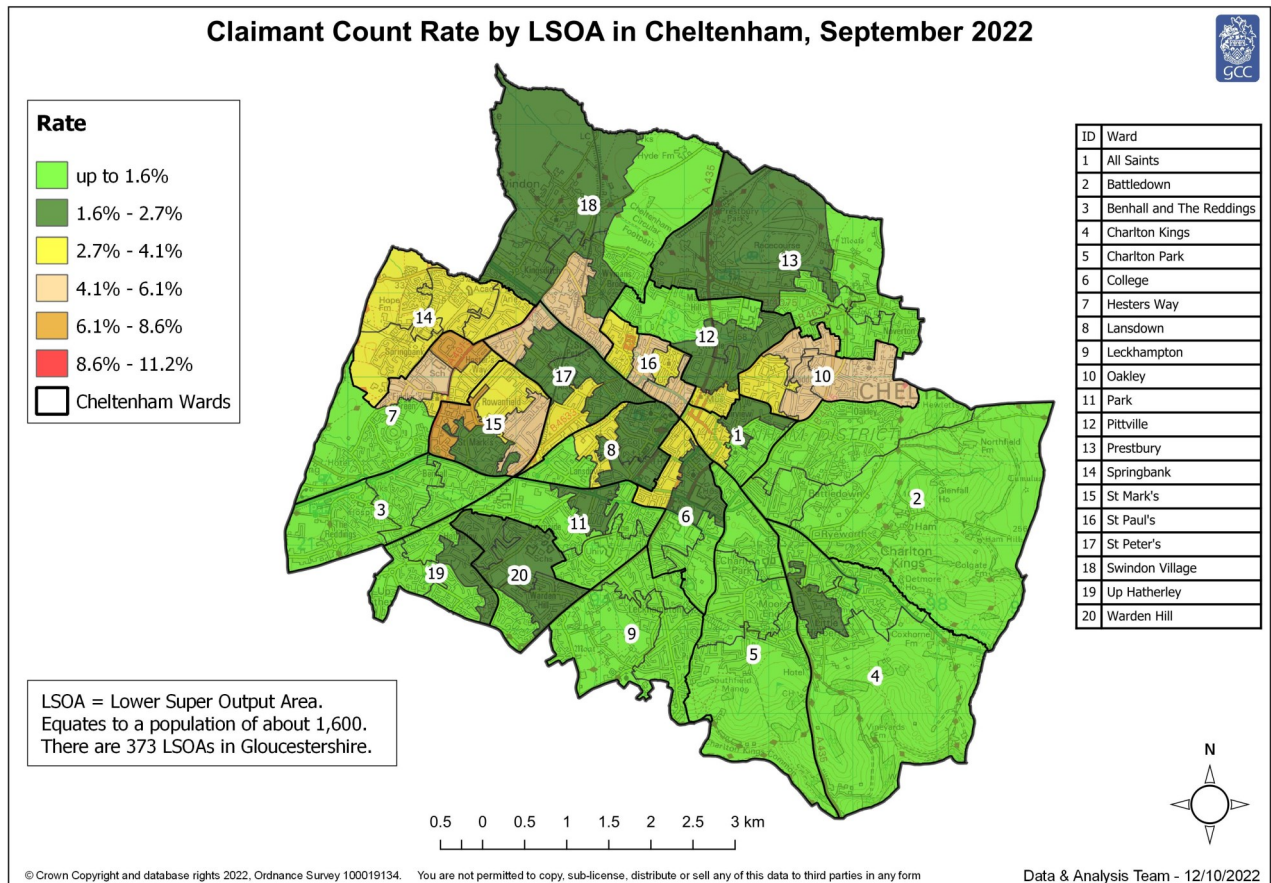
PART 5: MAP SHOWING DISTRIBUTION OF CLAIMANT RATE ACROSS GLOUCESTERSHIRE



Note: We have made changes to the way in which the rates illustrated on the maps are calculated - this means they are not comparable with those shown in previous bulletins.

Rates calculated using Lower Layer Super Output Area Population Estimates Mid-2019, Office for National Statistics

PART 5: MAP SHOWING DISTRIBUTION OF CLAIMANT RATE ACROSS GLOUCESTERSHIRE



Note: We have made changes to the way in which the rates illustrated on the maps are calculated - this means they are not comparable with those shown in previous bulletins.

Rates calculated using Lower Layer Super Output Area Population Estimates Mid-2019, Office for National Statistics

PART 6: YOUTH UNEMPLOYMENT(18-24 year olds)

Youth Claimant Rate and Claimant Count

Figure 15: Claimant Count for Gloucestershire over the past year

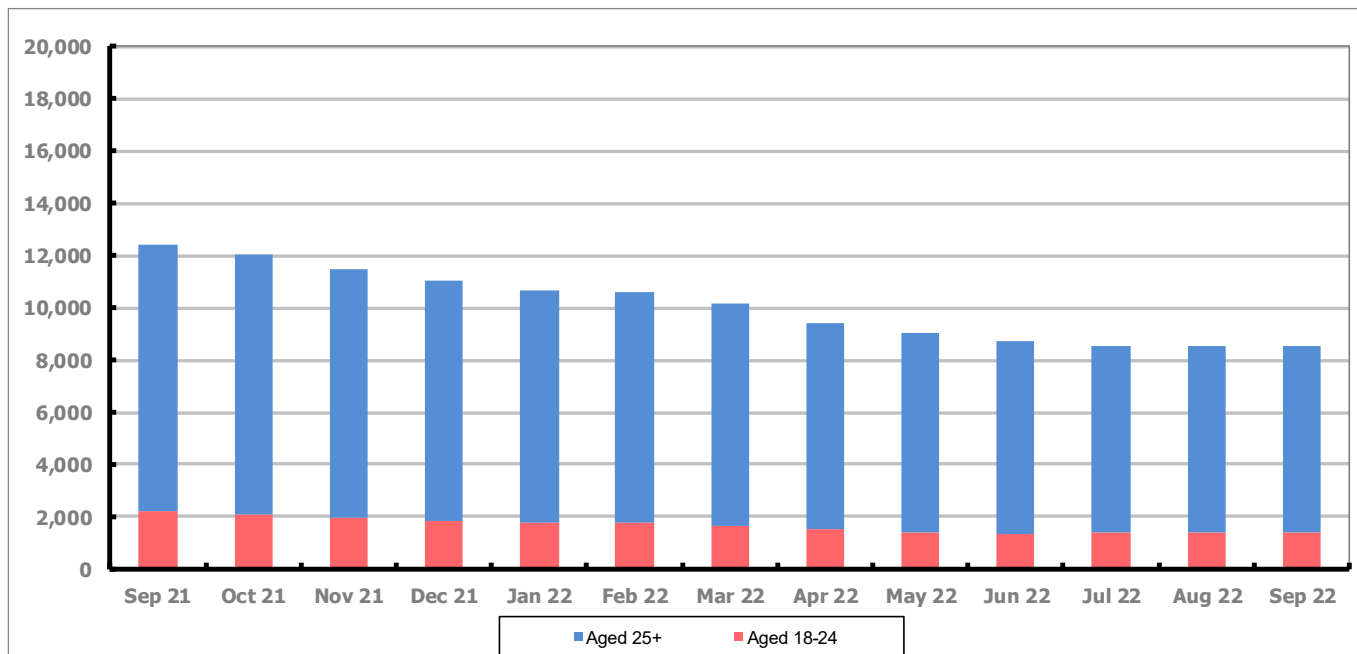


Figure 15 shows that in September 2022, 1,415 people aged 18-24 were claiming Job Seekers Allowance and Universal Credit who were not in work in Gloucestershire, this represents 16.6% of total working age claimants.

PART 7: YOUNG PEOPLE NOT IN EDUCATION, EMPLOYMENT OR TRAINING (NEET) IN GLOUCESTERSHIRE

Data provided by Gloucestershire Youth Support Team on the situation of young people (16-18) in Gloucestershire who are not in education, employment or formal training.

Gloucestershire Youth Support Team is required to report performance on the Academic Year 12 and 13 (16/17 age) against nationally defined criteria for counting the NEET group to the Department for Education (DfE) on a monthly basis. The NEET group includes young people actively seeking education, employment or training as well as those young people who are either not yet ready or who are unable to access these opportunities because of their personal circumstances. The figures quoted below include young people in both of these categories.

September 2022

Academic Year 12-13 Summary

	NEET	Cohort	%
Cheltenham	37	2122	1.74%
Cotswold	11	1684	0.65%
Forest	32	1705	1.88%
Gloucester	72	3121	2.31%
Stroud	24	2614	0.92%
Tewkesbury	32	1986	1.61%
Total	208	13232	1.57%

16-18 Age Summary

	NEET	Cohort	%
Cheltenham	57	3104	1.84%
Cotswold	23	2453	0.94%
Forest	61	2516	2.42%
Gloucester	119	4479	2.66%
Stroud	37	3833	0.97%
Tewkesbury	45	2875	1.57%
Total	342	19260	1.78%

16-18 Adjust NEET*	1.84%
--------------------	-------

Monthly Change	-102	128	-0.79%
Previous month	310	13104	2.37%

Monthly Change	32	6156	-0.59%
Previous month	310	13104	2.37%

The academic year 12-13 group contains a proportion of young people who turn 18 in the academic year but were 17 on the 31st August the previous academic year so are entitled to learning through RPA (raising participation age).

Please note all figures quoted above are subject to change before the submission date to the DfE which usually happens in the second or third week of the month for the previous month.

If you would like to receive any further information on Gloucestershire's NEET strategy, then please contact Lynne.Speak@Prospects.co.uk or telephone 07900 391182.

(*) Adjustment includes a proportion of young people aged 16-18 whose outcomes are not-known to Gloucestershire Youth Support Team.