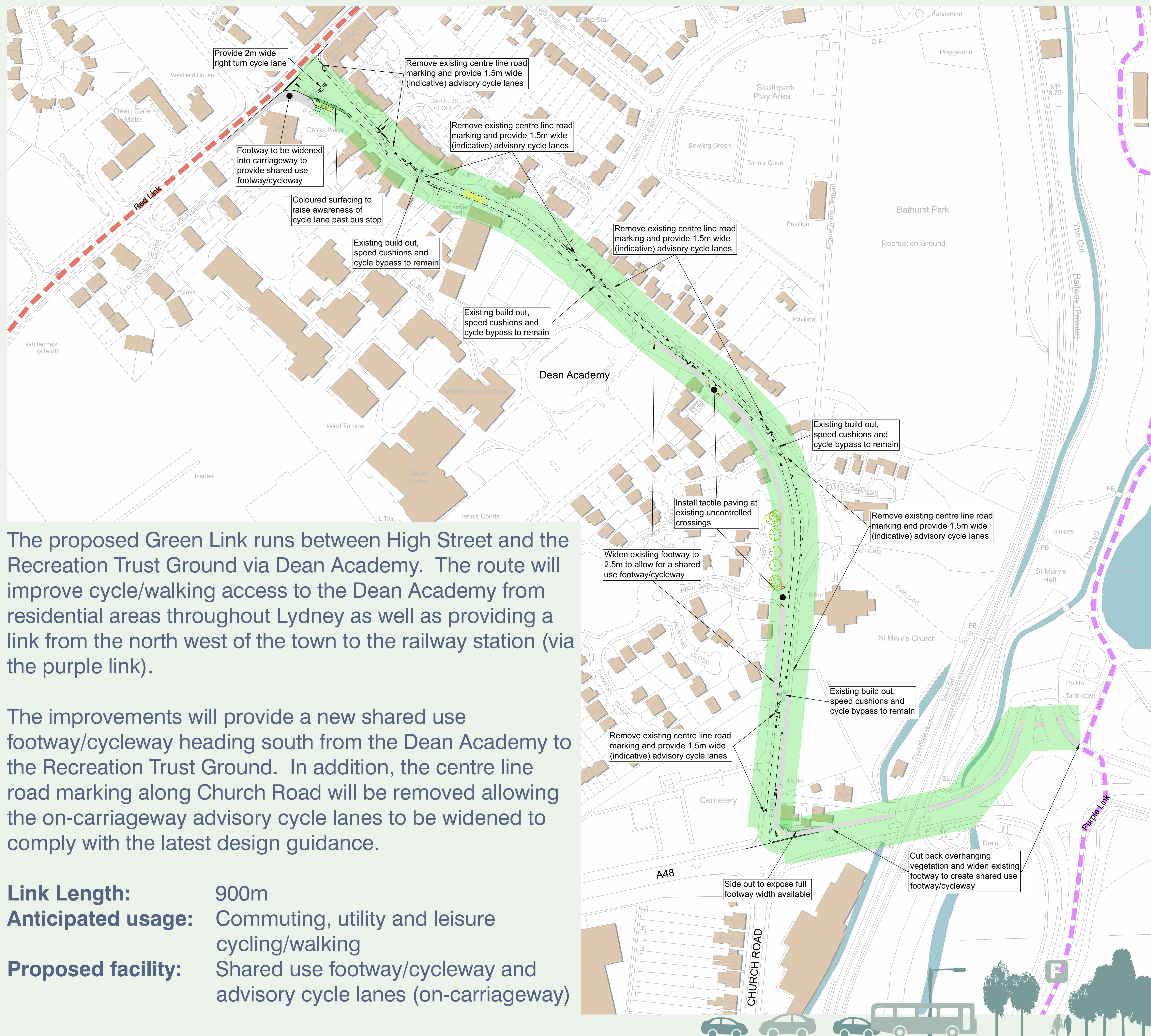


Lydney Cycle Improvements - Green Link



The proposed Green Link runs between High Street and the Recreation Trust Ground via Dean Academy. The route will improve cycle/walking access to the Dean Academy from residential areas throughout Lydney as well as providing a link from the north west of the town to the railway station (via the purple link).

The improvements will provide a new shared use footway/cycleway heading south from the Dean Academy to the Recreation Trust Ground. In addition, the centre line road marking along Church Road will be removed allowing the on-carriageway advisory cycle lanes to be widened to comply with the latest design guidance.

Link Length: 900m
Anticipated usage: Commuting, utility and leisure cycling/walking
Proposed facility: Shared use footway/cycleway and advisory cycle lanes (on-carriageway)