



District/Borough LSPs - Position Statement at July 2011

Cheltenham Strategic Partnership

Proposed new structure is currently out for consultation.

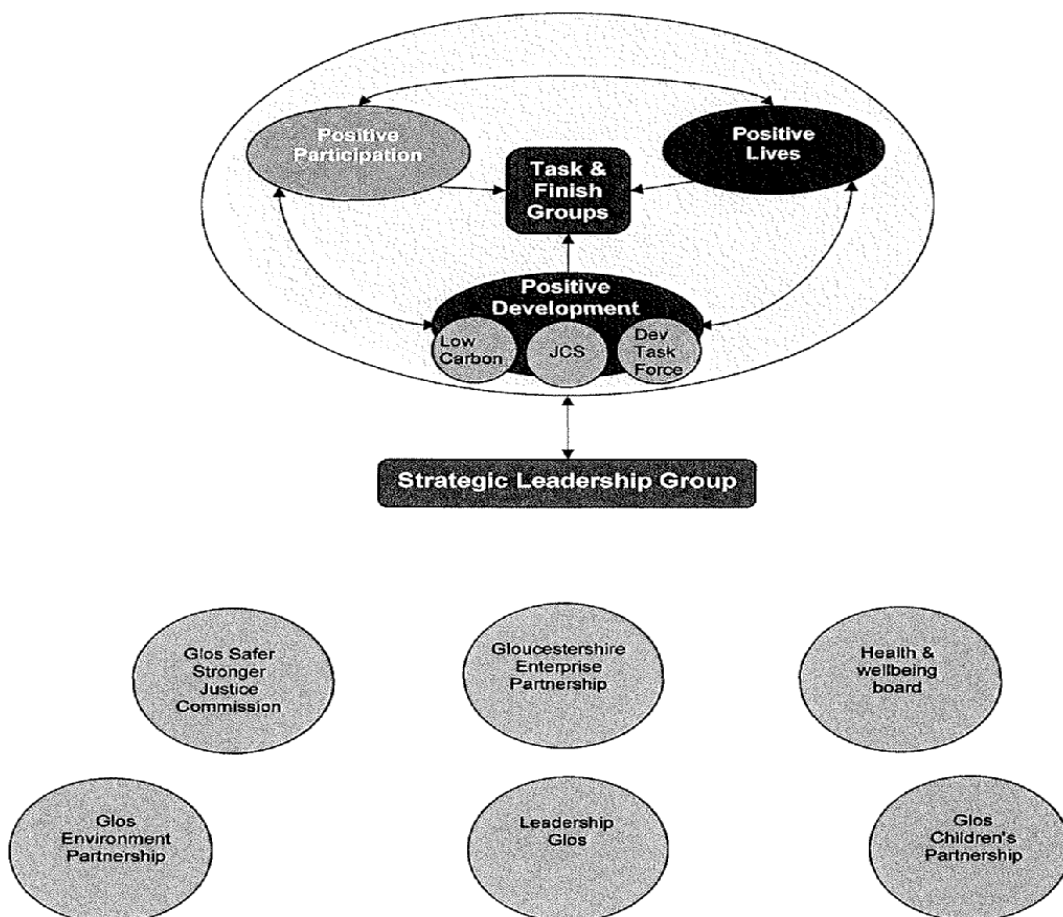
Proposed Vision and objectives

The proposed vision is for a simplified partnership structure that is easy to understand and keeps partners focussed on working together to meet local need, while making the best use of reduced resources.

The proposed objectives to deliver this vision are:

- To achieve well-governed and relevant partnership structures to deliver outcomes
- To develop better focused partnerships that deliver shared outcomes informed by needs analysis
- To build better, relevant engagement (not more engagement)

A proposed structure for partnership working in Cheltenham



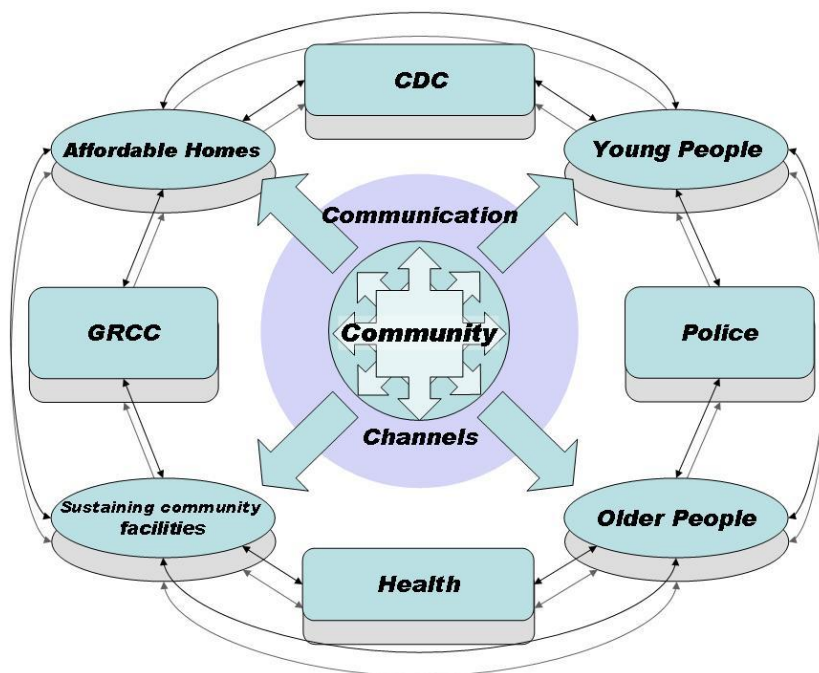
<http://www.cheltenhampartnership.org.uk/libraries/templates/page.asp?URN=256>

Contact: Richard Gibson, Tel: 01242 235354, Email: richard.gibson@cheltenham.gov.uk

Cotswold LSP

The role and structure of the Cotswold Local Strategic Partnership is currently under review. The old model of a partnership primarily responsible for the development and monitoring of the Sustainable Community Strategy is no longer tenable as the requirement for the Strategy has gone. The partnership has discussed the desirability of a partnership structure which can enable local communities to respond to the new powers and expectations of the Localism Bill and associated legislation, and with this in mind a series of community workshops are scheduled for September.

Localism



**Issues and organisations are illustrative, as the approach should be replicated across different issues and partner organisations*

http://www.cotswold.gov.uk/nqcontent.cfm?a_id=4703

Contact: Joseph Walker, Tel: 01285 623146 .. Email: Joseph.walker@cotswold.gov.uk

Forest of Dean Partnership

The Local Strategic Partnership has a **Board**, an **Advisory** Group and six **Delivery** Groups:

The **Board** is made up of sixteen people; they are senior members of their organisations who lead and inform the partnership at a local and at a county level - they have a strategic function.

The **Advisory** Group is made up of 7 people who performance manage the partnership - they look at what we said we would do and review how we've performed; they look at national guidance and summarise it to enable the Board to digest the information quickly.

There are six **Delivery** Groups which mirror the priorities in the Sustainable Community Strategy – the things you said were important. Each delivery group has a two-year action plan which contains the projects they are working on. Two year action plans enable partners to develop projects but this is short enough to ensure that they are able to respond to things that cannot be predicted, such as the economic downturn.

OUR VISION:

By 2020 we want the Forest of Dean district to be a place with a great quality of life:

- Where the high quality of our environment is valued and enhanced for future generations and the causes and effects of climate change are addressed
- Where community life is strengthened and all individuals are confident, safe, feel part of their community and are proud of it
- Where the economy is vibrant and strong and people can access the services they need
- With a distinctive identity locally and nationally

Click here to view our **Sustainable Community Strategy 2008-2020**

The partnership structure has recently been reviewed. Each delivery group is reviewing their work to match reduced resources. The Board is using the “Asset Based Community Development” approach to assess its priorities.

http://www.fdean.gov.uk/nqcontent.cfm?a_id=6697&tt=graphic

Contract: Lena Maller, Tel: 01594 812609, Email: Lena.Maller@fdean.gcsx.gov.uk

Gloucester Partnership

Reviewed and restructured in September 2010 and the Gloucester Partnership is governed by Strategic and Executive Boards.

The 6 theme groups are no longer in operation as we move towards a new Sustainable Community Strategy called Gloucester 'City Vision'

<http://www.gloucesterpartnership.org.uk/Docs/FINAL%20City%20Vision%20Consultation.pdf>.

New strategy and delivery arrangements are expected to be in place before the end of the year.

We will be moving away from the thematic groups and are likely to have task and finish groups around key issues.

Contact: Lorna Robinson, Tel: 01452 396983, email lorna.robinson@gloucester.gov.uk

Stroud LSP

Stroud LSP consists of a single partnership board that meets quarterly. Its purpose is to improve the quality of life for local people by encouraging effective partnership between those people who can directly and indirectly bring about change

At the December 2010 meeting, the Stroud LSP decided it wanted to help mitigate unemployment concerns in the district. A task and finish group was established and given a remit that includes mapping the district's skills situation with regard to company needs; course/training availability and gathering the views of young people on subjects such as apprenticeships, careers guidance and tuition fees. A full report, covering actions completed and further recommendations, will be presented to the Stroud LSP by the Employment Working Group in March 2012.

The Board comprises:

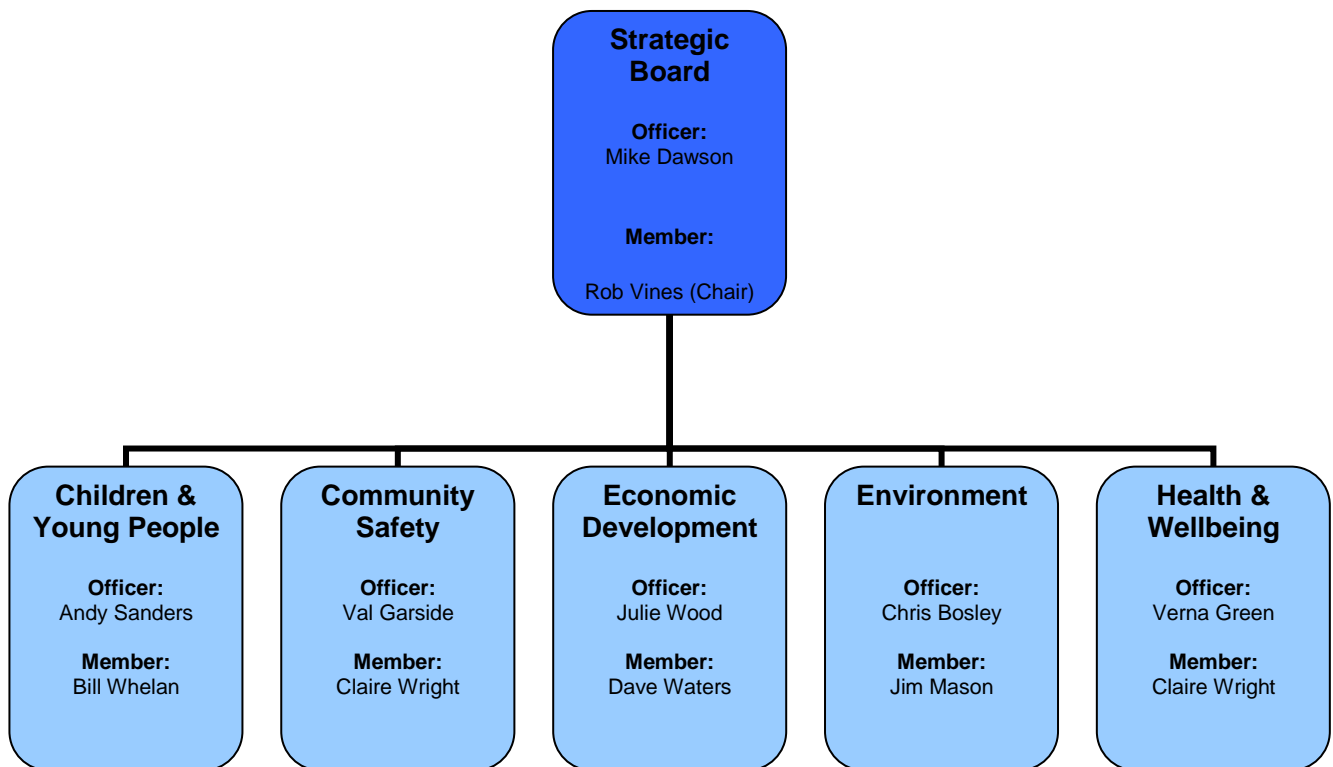
- Local MPs
- Public Agencies
- Businesses
- Community and Voluntary Sector
- Parish and Town Councils
- Stroud District Council

Current membership, meeting notes and our Sustainable Community Strategy 2010 can be viewed via
<http://community.stroud.gov.uk/general.asp?pid=34&pgid=1185>

Contact: Jackie Godwin, Tel: 01453 754296, Email: jackie.godwin@stroud.gov.uk

Tewkesbury Borough Partnership

Tewkesbury Borough LSP is currently under review. Partners have taken part in a Partnership Improvement Programme which will result in an agreed improvement plan and a new way of working, including structure, will emerge as part of this process.



Contact: Adrian Goode, Tel: 01684 272268, Email adrian.goode@tewkesbury.gov.uk