

Unemployment Bulletin

Issue 37 August 2011

Contents

Part 1: Summary

A summary of unemployment data at district, County, regional and national level

1

Part 2: County

Unemployment figures for the County compared to the South West and the rest of the UK

3

Part 3: Districts

A comparative break down of unemployment figures by district

4

Part 4: Wards

Further breakdown of unemployment figures by ward:

Cheltenham

6

Cotswolds

8

Forest of Dean

10

Gloucester

12

Stroud

14

Tewkesbury

16

Part 5: Map

Distribution of claimant rate across Gloucestershire

18

Part 6: Young People

Data about Young People Not in Education, Employment or Training (NEET)

20

INTRODUCTION

The Unemployment Bulletin provides a monthly update on unemployment data for Gloucestershire, the South West region and the United Kingdom. It is produced by the Economic section of the County Council Chief Executive's Support Unit Research Team. The data is sourced from the Office for National Statistics via Nomis (www.nomis.co.uk).

The claimant count measures the number of people claiming unemployment-related benefit (currently Job Seeker's allowance). The claimant rate is the number of claimants as a proportion of the working age population.

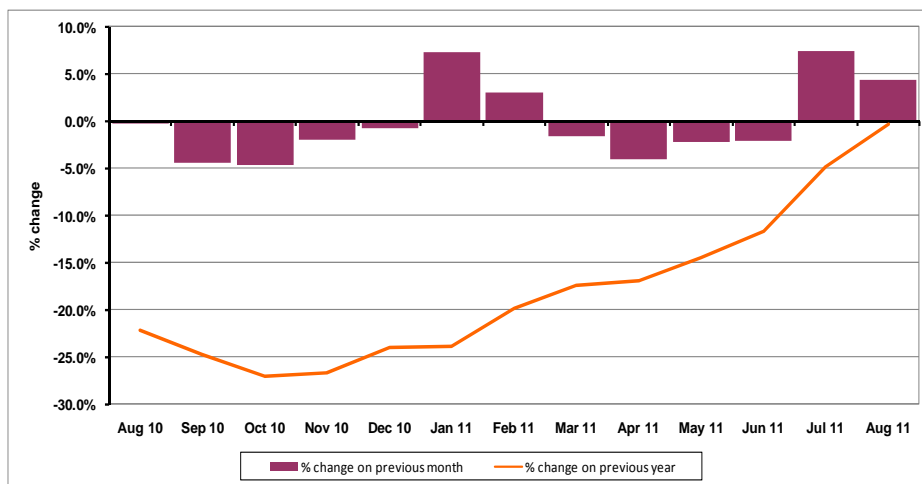
PART 1: SUMMARY

The claimant rate in Gloucestershire was 2.6% in August 2011. This was an increase of 0.1% on the July 2011 figure. The UK and South West rate also increased to 3.9% and 2.6% respectively. Gloucestershire's rate was the same as the South West average of 2.6%, and 1.3% lower than the UK average of 3.9%.

The claimant count in Gloucestershire in August 2011 increased by 412 people. The amount of people claiming in August 2011 was 4.4% higher than the number in July 2011. This compares to a 3.2% increase in the South West and a 2.3% increase for the UK.

The year on year claimant count in Gloucestershire has decreased. The count was -0.4% lower in August 2011 than at the same point in the previous year as shown in the graph below.

Gloucestershire claimants - Month on Month and Year on Year change: August 2010 to August 2011



Source: ONS Crown Copyright Reserved

Produced by:

The Research Team (Economics)
Chief Executive Support Unit
Gloucestershire County Council
September 2011

DISTRICTS AT A GLANCE

At a glance unemployment information grouped by district. Includes:

Claim count: Total number of people claiming Job Seekers Allowance in August 2011

Compared to last month: How much larger/smaller August's claim count is compared to July, expressed as a %

Claimant rate: The % of working population claiming Job Seekers Allowance in August 2011

Highest claiming ward: The ward with the highest claim count in that district and the rate

CHELTENHAM BOROUGH

Claim count:	2,203
Compared to last month:	+3.9%
Claimant rate:	2.9%
Highest claiming ward	Hesters Way (5.9%)

GLOUCESTER CITY

Claim count:	2,993
Compared to last month:	+5.8%
Claimant rate:	3.9%
Highest claiming ward	Westgate (8.0%)

COTSWOLD DISTRICT

Claim count:	694
Compared to last month:	+8.8%
Claimant rate:	1.4%
Highest claiming ward	Cirencester Watermoor (3.2%)

STROUD DISTRICT

Claim count:	1,413
Compared to last month:	+2.4%
Claimant rate:	2.1%
Highest claiming ward	Slade (5.1%)

FOREST OF DEAN

Claim count:	1,312
Compared to last month:	+2.5%
Claimant rate:	2.5%
Highest claiming ward	Cinderford East (4.9%)

TEWKESBURY BOROUGH

Claim count:	1,092
Compared to last month:	+4.3%
Claimant rate:	2.2%
Highest claiming ward	Tewkesbury Prior's Park (5.1%)

YOUNG PEOPLE NOT IN EDUCATION, EMPLOYMENT OR TRAINING (NEET)

As at the end of August 2011 there were 658 young people aged 16-18 not in education, employment or training in Gloucestershire and this figure translates into an adjusted (*) 16-18 NEET population of 5.2%.

PART 2: UK, SW AND GLOUCESTERSHIRE INDICATORS

The unemployment situation in Gloucestershire compared to the South West and the UK.

Claimant Rate

Figure 1: Claimant Rate for Gloucestershire, the South West and UK over the past year

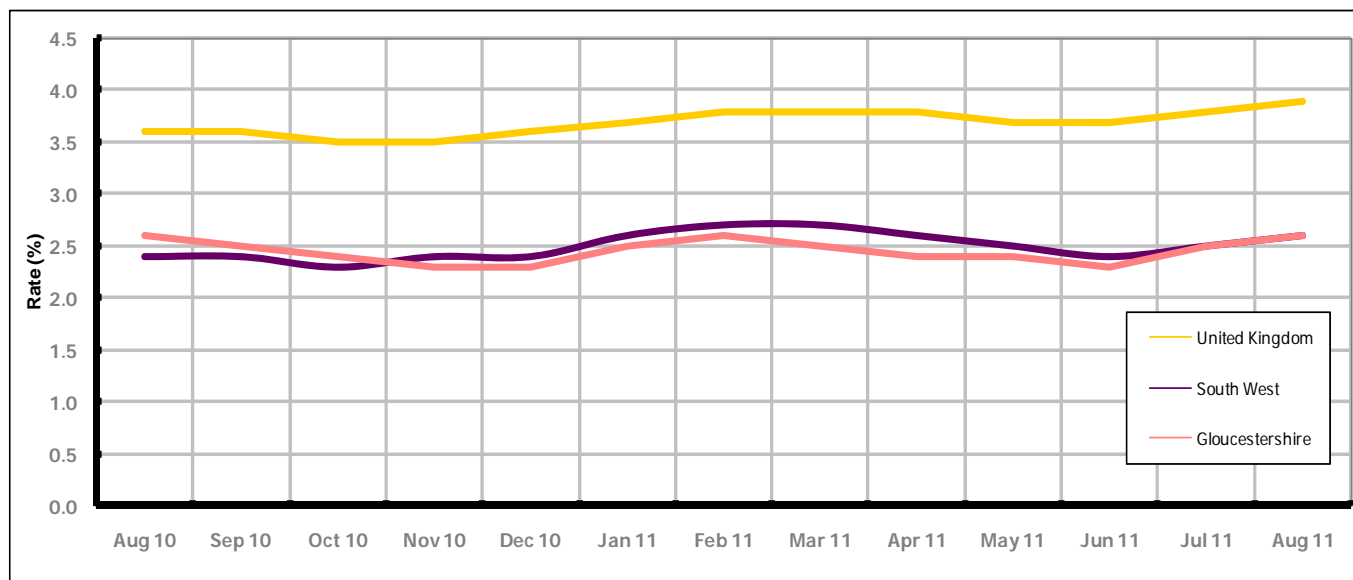


Figure 1 shows the claimant rate for Gloucestershire at 2.6% in August 2011. The rate remained lower than the South West average between November 2010 and August 2011, when it grew to the same as the South West rate, it has been lower by approximately 1.3% against the UK average during the same period. The August 2011 rate represented a 0.1% increase on July 2011.

Claimant Count

Table 1: Analysis of UK, South West and Gloucestershire Claimant Counts

Area	Claimant Count in August 2011	% change on July 2011	Average % change over the last six months	Consecutive months increasing
UK	1,576,835	+2.3%	+0.5%	1
South West	85,553	+3.2%	-0.4%	1
Gloucestershire	9,707	+4.4%	+0.5%	1

Table 1 shows that in August 2011, the number of claimants in Gloucestershire was 4.4% higher than the number in July 2011.

The average change in claimants in Gloucestershire for the six months to August 2011 was +0.5%. This is the same as the UK average and 0.9% higher than the South West average.

PART 3: LOCAL AUTHORITY DISTRICT ANALYSIS

Claimant Rate and Claimant Count

Figure 2: Claimant Rate (%) across Gloucestershire - August 2011

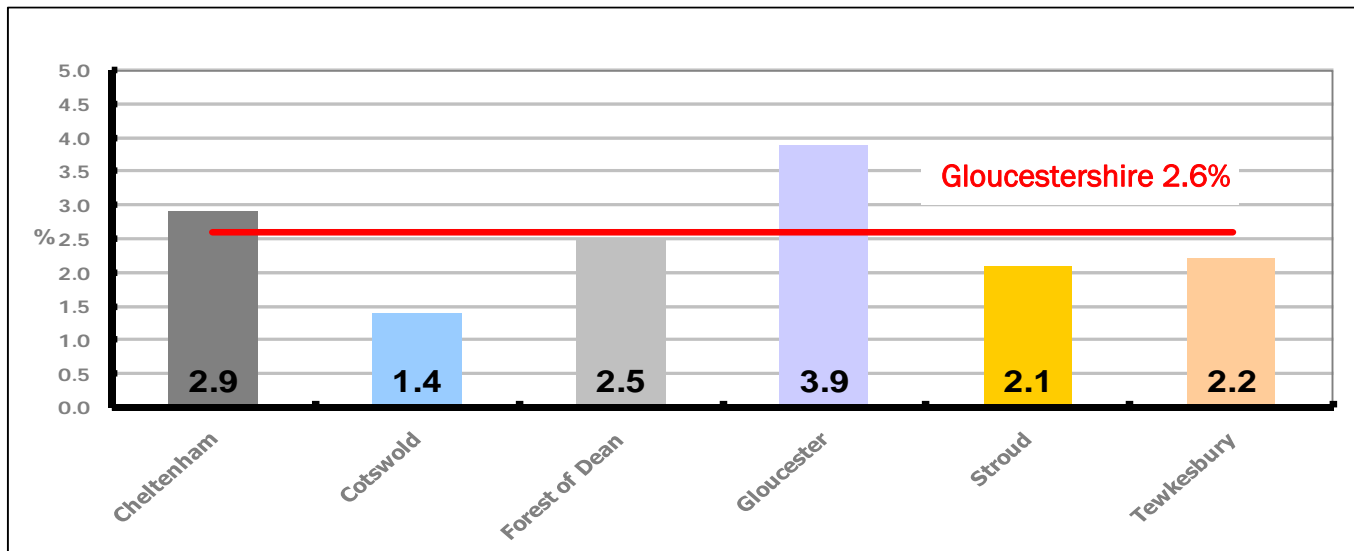


Figure 2 shows the claimant rate for August 2011 in Gloucestershire. Between July 2011 and August 2011 Forest of Dean district remained the same, while all the other districts saw an increase.

Figure 3: Total claimants over the past year across Gloucestershire Districts

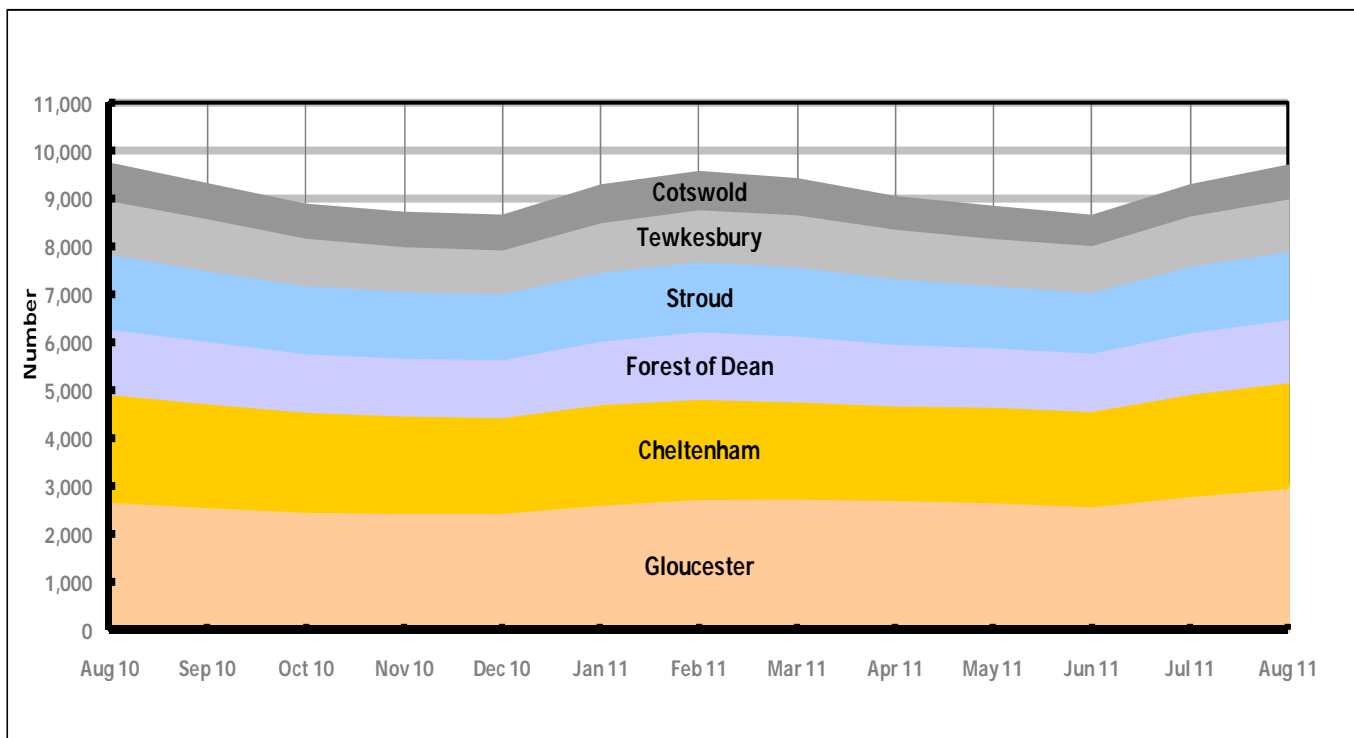


Figure 3 shows the overall claimant count by district for Gloucestershire over the past year. It shows the number of claimants declined between August 2010 and June 2011, with the exception of January, February 2011. Since July 2011 the number of claimants have been increasing.

Table 2: Analysis of Gloucestershire and District Claimant Counts

Total	Aug 11 Number	Aug 11 Rate	Jul 11 Number	Jul 11 Rate	Monthly change	% monthly change	Monthly change of rate
Gloucestershire	9,707	2.6	9,295	2.5	412	4.4%	0.1
Cheltenham	2,203	2.9	2,121	2.8	82	3.9%	0.1
Cotswold	694	1.4	638	1.3	56	8.8%	0.1
Forest of Dean	1,312	2.5	1,280	2.5	32	2.5%	0.0
Gloucester	2,993	3.9	2,829	3.7	164	5.8%	0.2
Stroud	1,413	2.1	1,380	2.0	33	2.4%	0.1
Tewkesbury	1,092	2.2	1,047	2.1	45	4.3%	0.1

Table 2 shows the change in the claimant count in August 2011 compared to July 2011. All districts experienced an increase in the number of claimants.

Table 3: Analysis of Male Gloucestershire and District Claimant Counts

Male	Aug 11 Number	Aug 11 Rate	Jul 11 Number	Jul 11 Rate	Monthly change	% monthly change	Monthly change of rate
Gloucestershire	6,360	3.4	6,177	3.3	183	3.0%	0.1
Cheltenham	1,458	3.8	1,426	3.8	32	2.2%	0.0
Cotswold	410	1.6	396	1.6	14	3.5%	0.0
Forest of Dean	843	3.3	830	3.2	13	1.6%	0.1
Gloucester	2,009	5.2	1,922	5.0	87	4.5%	0.2
Stroud	918	2.7	916	2.7	2	0.2%	0.0
Tewkesbury	722	2.9	687	2.8	35	5.1%	0.1

Table 3 shows the change in the male claimant count in August 2011 compared to July 2011. All districts experienced an increase in the number of male claimants.

Table 4: Analysis of Female Gloucestershire and District Claimant Counts

Female	Aug 11 Number	Aug 11 Rate	Jul 11 Number	Jul 11 Rate	Monthly change	% monthly change	Monthly change of rate
Gloucestershire	3,347	1.8	3,118	1.7	229	7.3%	0.1
Cheltenham	745	2.0	695	1.9	50	7.2%	0.1
Cotswold	284	1.1	242	0.9	42	17.4%	0.2
Forest of Dean	469	1.8	450	1.7	19	4.2%	0.1
Gloucester	984	2.6	907	2.4	77	8.5%	0.2
Stroud	495	1.4	464	1.3	31	6.7%	0.1
Tewkesbury	370	1.4	360	1.4	10	2.8%	0.0

Table 4 shows the change in the female claimant count in August 2011 compared to July 2011. All districts experienced an increase in the number of female claimants.

PART 4: LOCAL AUTHORITY DISTRICT AND WARD ANALYSIS

This section covers the six districts and a comparison of their constituent wards.

4.1 Cheltenham Borough

Claimant Rate and Claimant Count

Figure 4: Cheltenham Borough claimant rate over the last year

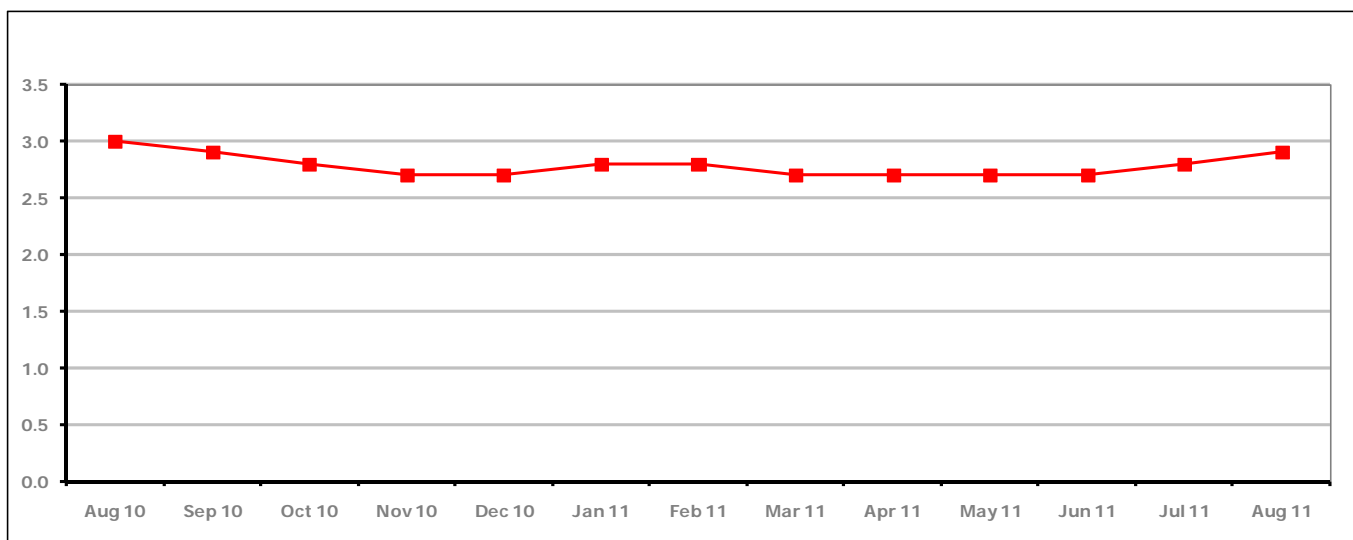


Figure 4 shows the claimant rate in Cheltenham increased in August 2011 to 2.9%.

Figure 5: Cheltenham Borough claimants - Month on Month and Year on Year change

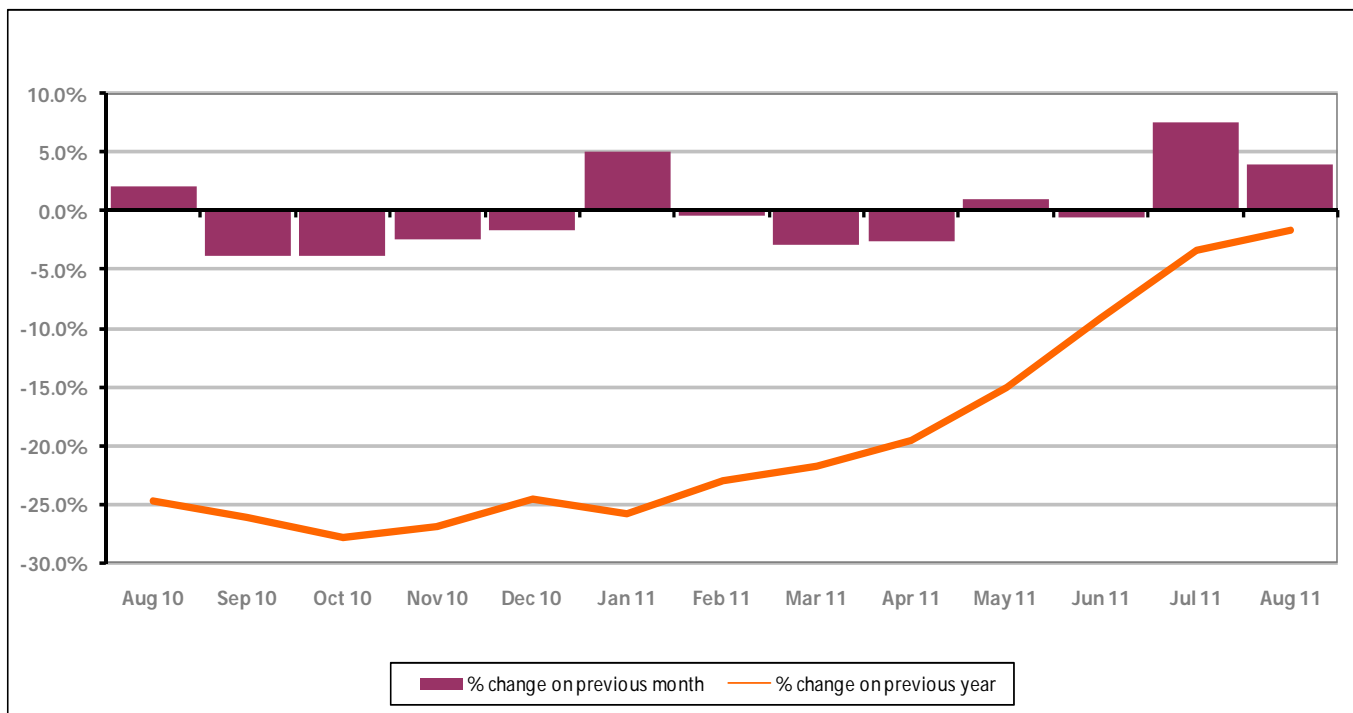


Figure 5 shows the claimant count increased by +3.9% since last month. The change on the previous year has increased in August 2011 compared to July 2011 to -1.6%.

PART 4: LOCAL AUTHORITY DISTRICT AND WARD ANALYSIS

4.1 Cheltenham Borough continued...

Figure 6: Claimant rates across Cheltenham Borough wards - August 2011

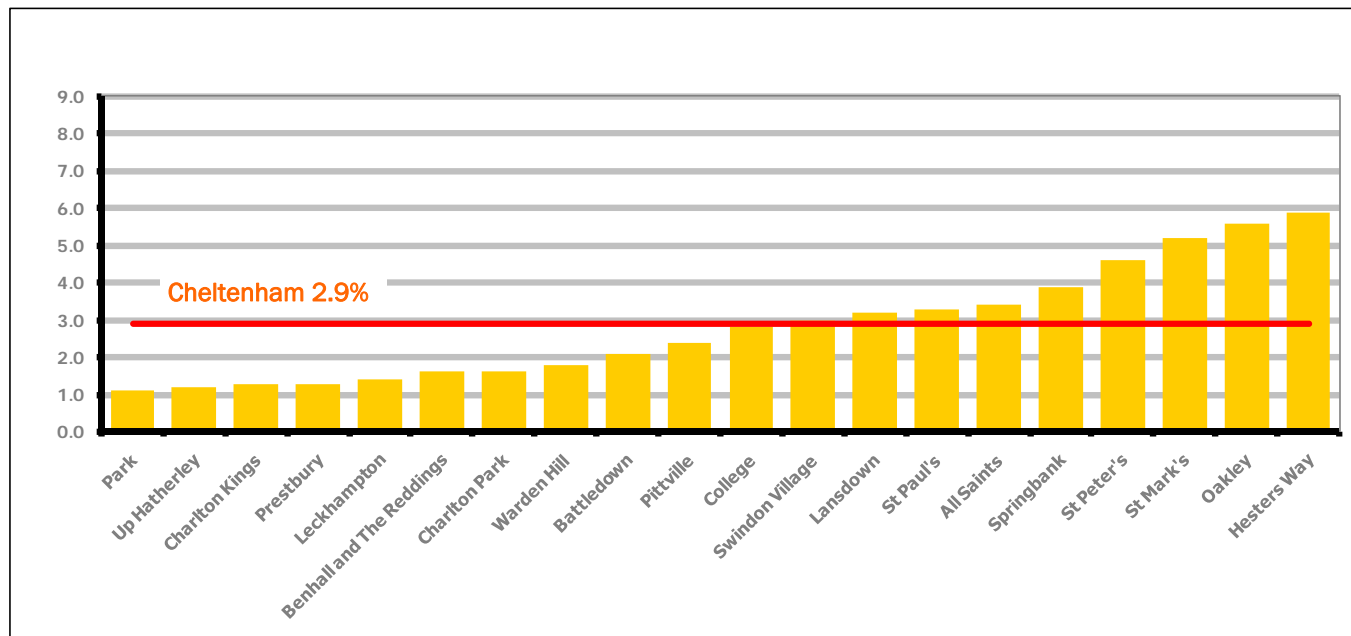
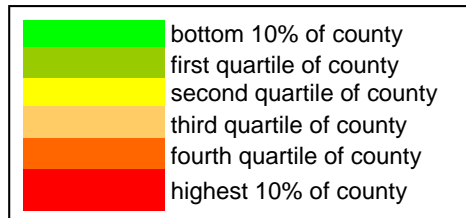


Figure 6 shows the claimant rates for Cheltenham Borough wards. The red line represents the average claimant rate across the Borough of 2.9%. Nine wards lie above the average.

Table 5: Analysis of Claimant Count at Cheltenham Borough ward level - August 2011

District	Ward	Rate	Rank*
Cheltenham	Park	1.1	22
Cheltenham	Up Hatherley	1.2	32
Cheltenham	Charlton Kings	1.3	37
Cheltenham	Prestbury	1.3	37
Cheltenham	Leckhampton	1.4	44
Cheltenham	Benhall and The Reddings	1.6	56
Cheltenham	Charlton Park	1.6	56
Cheltenham	Warden Hill	1.8	69
Cheltenham	Battledown	2.1	86
Cheltenham	Pittville	2.4	95
Cheltenham	College	2.8	104
Cheltenham	Swindon Village	3.0	108
Cheltenham	Lansdown	3.2	113
Cheltenham	St Paul's	3.3	119
Cheltenham	All Saints	3.4	120
Cheltenham	Springbank	3.9	125
Cheltenham	St Peter's	4.6	129
Cheltenham	St Mark's	5.2	136
Cheltenham	Oakley	5.6	137
Cheltenham	Hesters Way	5.9	139



* 1 = "best" and 142 = "worst"

Table 5 shows overall claimant rates for Cheltenham Borough wards and their position relative to all wards in Gloucestershire.

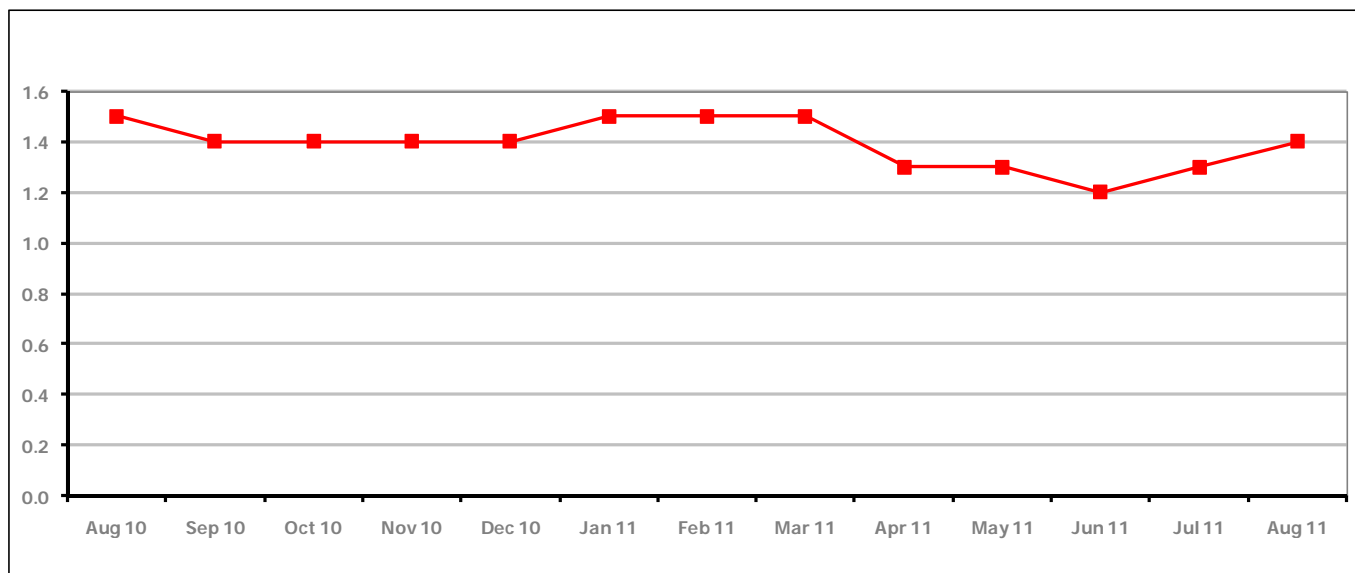
PART 4: LOCAL AUTHORITY DISTRICT AND WARD ANALYSIS**4.2 Cotswold District****Claimant Rate and Claimant Count***Figure 7: Cotswold District claimant rate over the last year*

Figure 7 shows the claimant rate in Cotswold District increased in August 2011 to 1.4%.

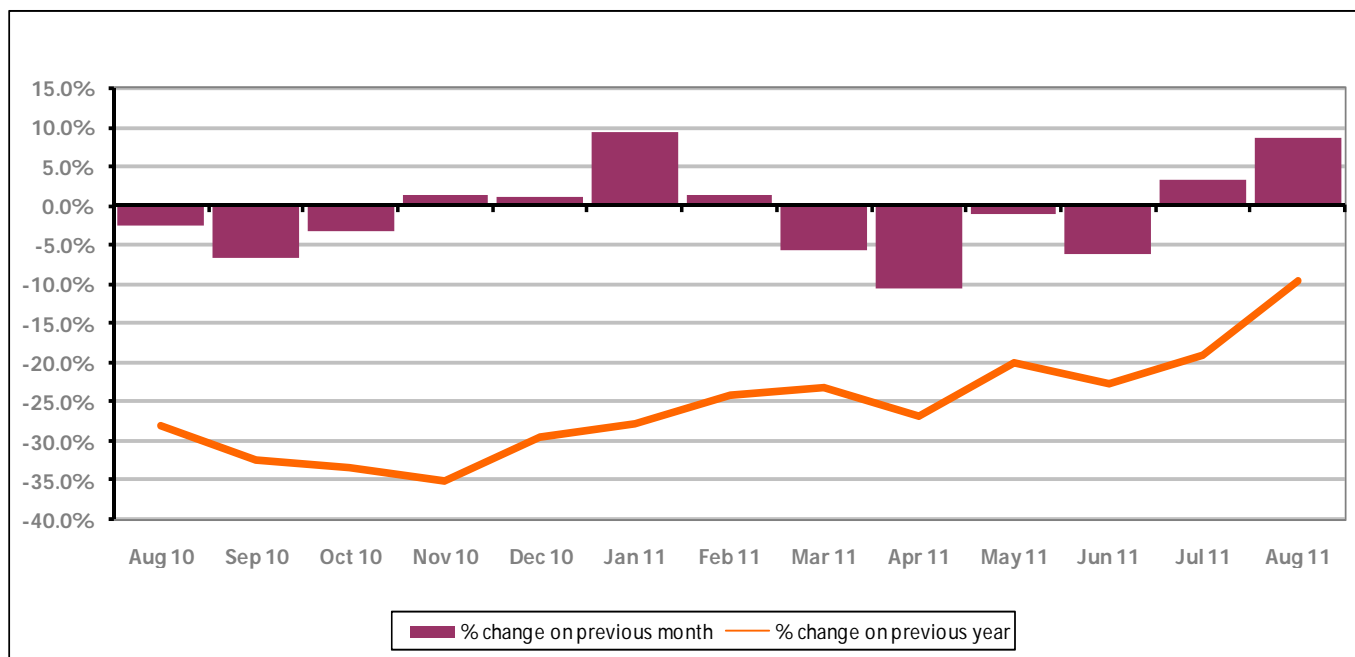
Figure 8: Cotswold District claimants - Month on Month and Year on Year change

Figure 8 shows the claimant count increased by +8.8% since July 2011. The change on the previous year has increased from July 2011 to August 2011 to -9.6%.

PART 4: LOCAL AUTHORITY DISTRICT AND WARD ANALYSIS

4.2 Cotswold District continued...

Figure 9: Claimant rates across Cotswold District wards - August 2011

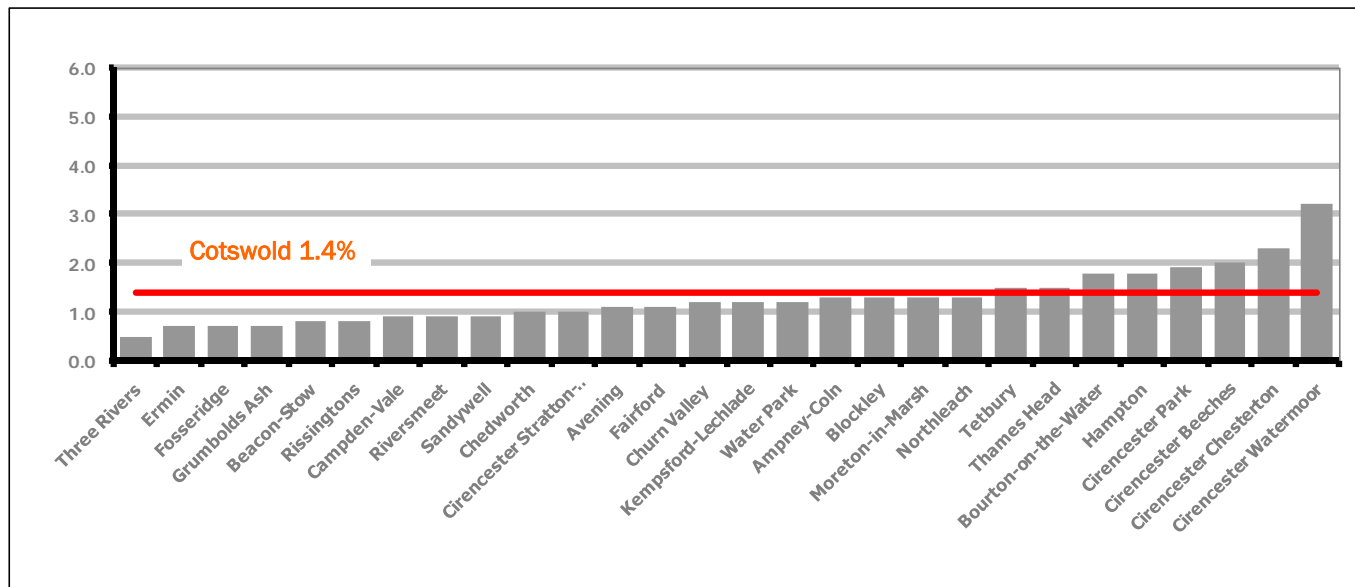
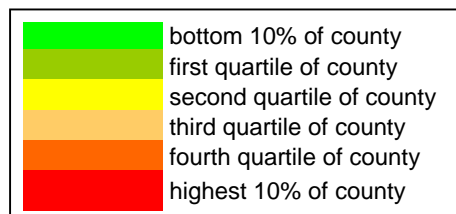


Figure 9 shows the claimant rates for Cotswold District wards. The red line represents the average claimant rate across the District of 1.4%. Eight wards lie above the average.

Table 6: Analysis of Claimant Count at Cotswold District ward level - August 2011

District	Ward	Rate	Rank*
Cotswolds	Three Rivers	0.5	1
Cotswolds	Ermin	0.7	4
Cotswolds	Fosseridge	0.7	4
Cotswolds	Grumbolds Ash	0.7	4
Cotswolds	Beacon-Stow	0.8	7
Cotswolds	Rissingtons	0.8	7
Cotswolds	Campden-Vale	0.9	10
Cotswolds	Riversmeet	0.9	10
Cotswolds	Sandywell	0.9	10
Cotswolds	Chedworth	1.0	14
Cotswolds	Cirencester Stratton-Whiteway	1.0	14
Cotswolds	Avening	1.1	22
Cotswolds	Fairford	1.1	22
Cotswolds	Churn Valley	1.2	32
Cotswolds	Kempsford-Lechlade	1.2	32
Cotswolds	Water Park	1.2	32
Cotswolds	Ampney-Coln	1.3	37
Cotswolds	Blockley	1.3	37
Cotswolds	Moreton-in-Marsh	1.3	37
Cotswolds	Northleach	1.3	37
Cotswolds	Tetbury	1.5	50
Cotswolds	Thames Head	1.5	50
Cotswolds	Bourton-on-the-Water	1.8	69
Cotswolds	Hampton	1.8	69
Cotswolds	Cirencester Park	1.9	75
Cotswolds	Cirencester Beeches	2.0	82
Cotswolds	Cirencester Chesterton	2.3	93
Cotswolds	Cirencester Watermoor	3.2	113



* 1 = "best" and 142 = "worst"

Table 6 shows overall claimant rates for Cotswold District wards and their position relative to all wards in Gloucestershire.

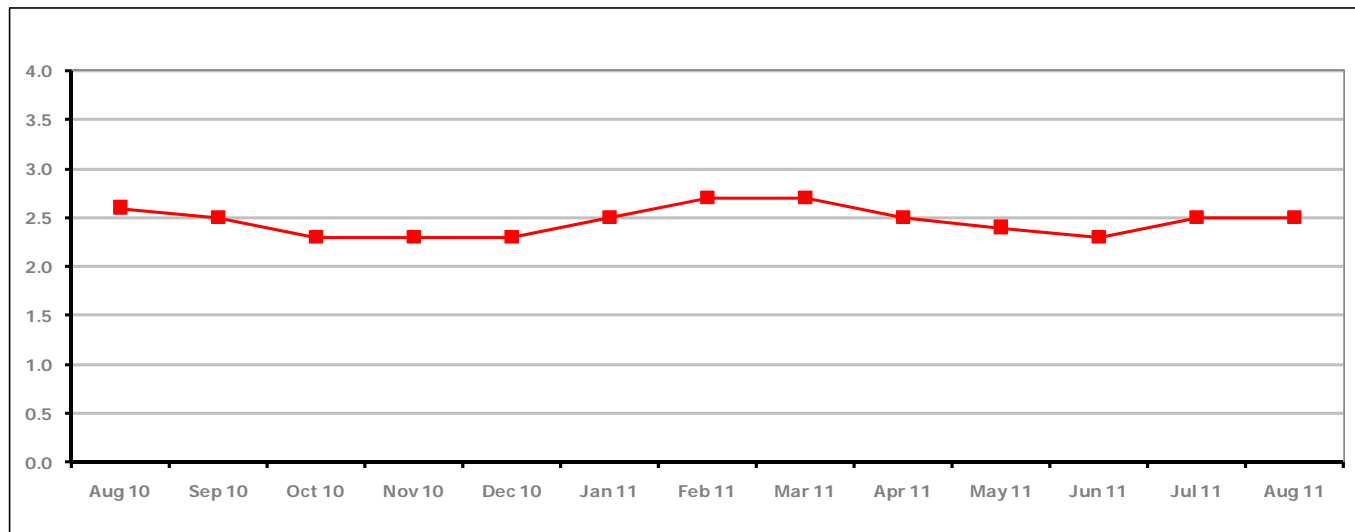
PART 4: LOCAL AUTHORITY DISTRICT AND WARD ANALYSIS**4.3 Forest of Dean District****Claimant Rate and Claimant Count***Figure 10: Forest of Dean District claimant rate over the last year*

Figure 10 shows the claimant rate in the Forest of Dean remained the same as last month at 2.5%.

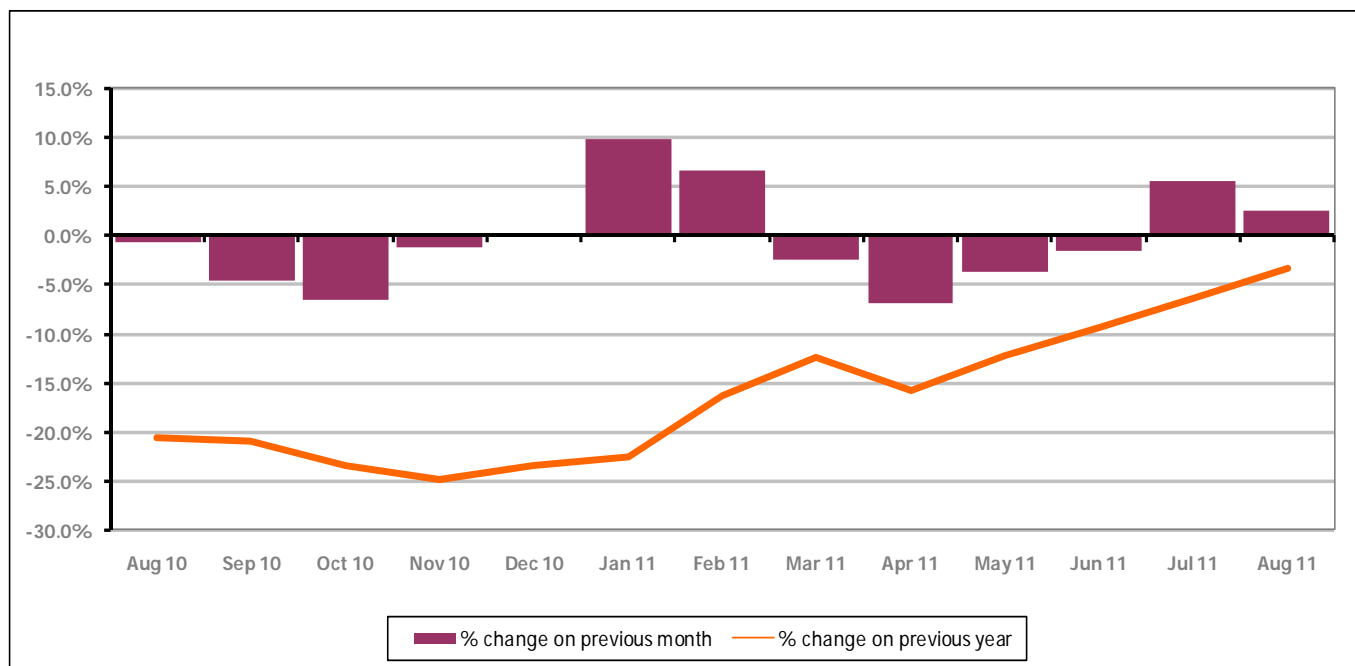
Figure 11: Forest of Dean District claimants - Month on Month and Year on Year change

Figure 11 shows the claimant count increased by +2.5% since July 2011. The change on the previous year increased between July and August 2011 to -3.3%.

PART 4: LOCAL AUTHORITY DISTRICT AND WARD ANALYSIS

4.3 Forest of Dean District continued...

Figure 12: Claimant rates across Forest of Dean District wards - August 2011

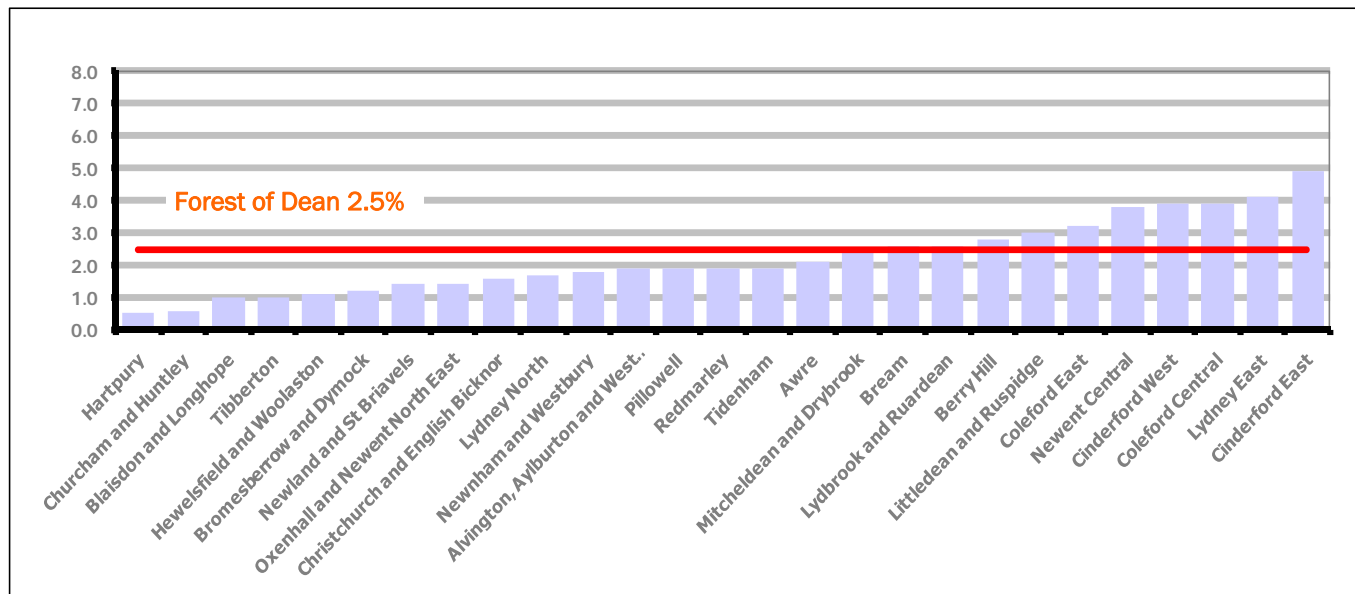
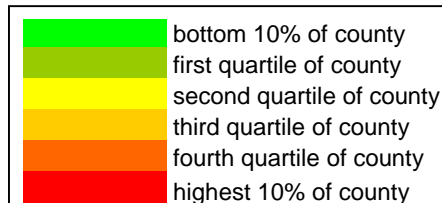


Figure 12 shows the claimant rates for Forest of Dean District wards. The red line represents the average claimant rate across the District of 2.5 %. Ten wards lie above the average.

Table 7: Analysis of Claimant Count at Forest of Dean District ward level - August 2011

District	Ward	Rate	Rank*
Forest	Hartpury	0.5	1
Forest	Churcham and Huntley	0.6	3
Forest	Blaisdon and Longhope	1.0	14
Forest	Tibberton	1.0	14
Forest	Hewelsfield and Woolaston	1.1	22
Forest	Bromesberrow and Dymock	1.2	32
Forest	Newland and St Briavels	1.4	44
Forest	Oxenhall and Newent North East	1.4	44
Forest	Christchurch and English Bicknor	1.6	56
Forest	Lydney North	1.7	63
Forest	Newnham and Westbury	1.8	69
Forest	Alvington, Aylburton and West Lydney	1.9	75
Forest	Pillowell	1.9	75
Forest	Redmarley	1.9	75
Forest	Tidenham	1.9	75
Forest	Awre	2.1	86
Forest	Mitcheldean and Drybrook	2.5	96
Forest	Bream	2.6	98
Forest	Lydbrook and Ruardean	2.6	98
Forest	Berry Hill	2.8	104
Forest	Littledean and Ruspidge	3.0	108
Forest	Coleford East	3.2	113
Forest	Newent Central	3.8	124
Forest	Cinderford West	3.9	125
Forest	Coleford Central	3.9	125
Forest	Lydney East	4.1	128
Forest	Cinderford East	4.9	131



* 1 = "best" and 142 = "worst"

Table 7 shows overall claimant rates for the Forest of Dean District wards and their position relative to all wards in Gloucestershire.

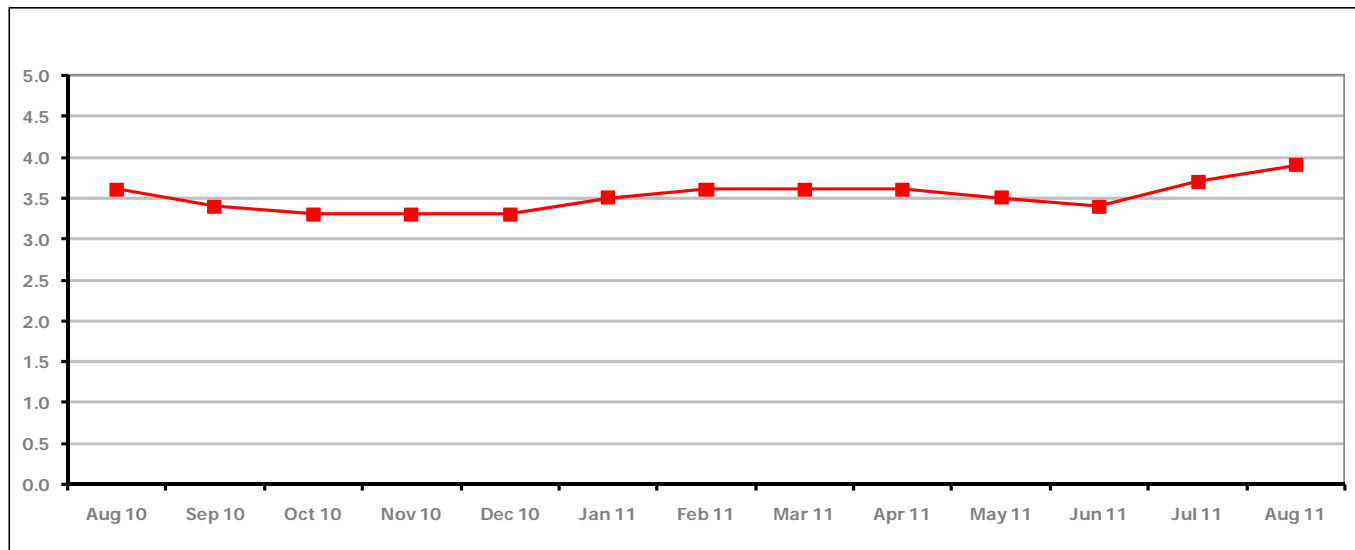
PART 4: LOCAL AUTHORITY DISTRICT AND WARD ANALYSIS**4.4 Gloucester City****Claimant Rate and Claimant Count***Figure 13: Gloucester City claimant rate over the last year*

Figure 13 shows the claimant rate for Gloucester City increased in August 2011 to 3.9%.

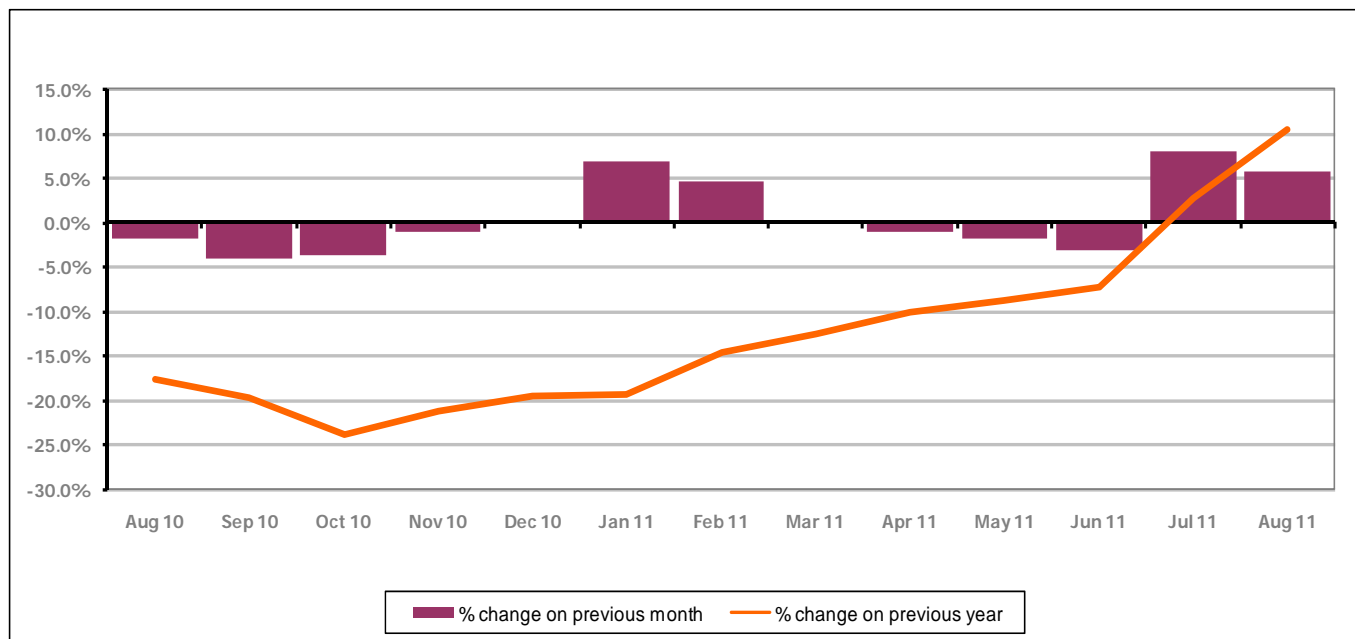
Figure 14: Gloucester City claimants - Month on Month and Year on Year change

Figure 14 shows the monthly claimant count increased by +5.8% since July 2011. The change on the previous year has increased between July 2011 and August 2011 to +10.5%.

PART 4: LOCAL AUTHORITY DISTRICT AND WARD ANALYSIS

4.4 Gloucester City continued...

Figure 15: Claimant rates across Gloucester City wards - August 2011

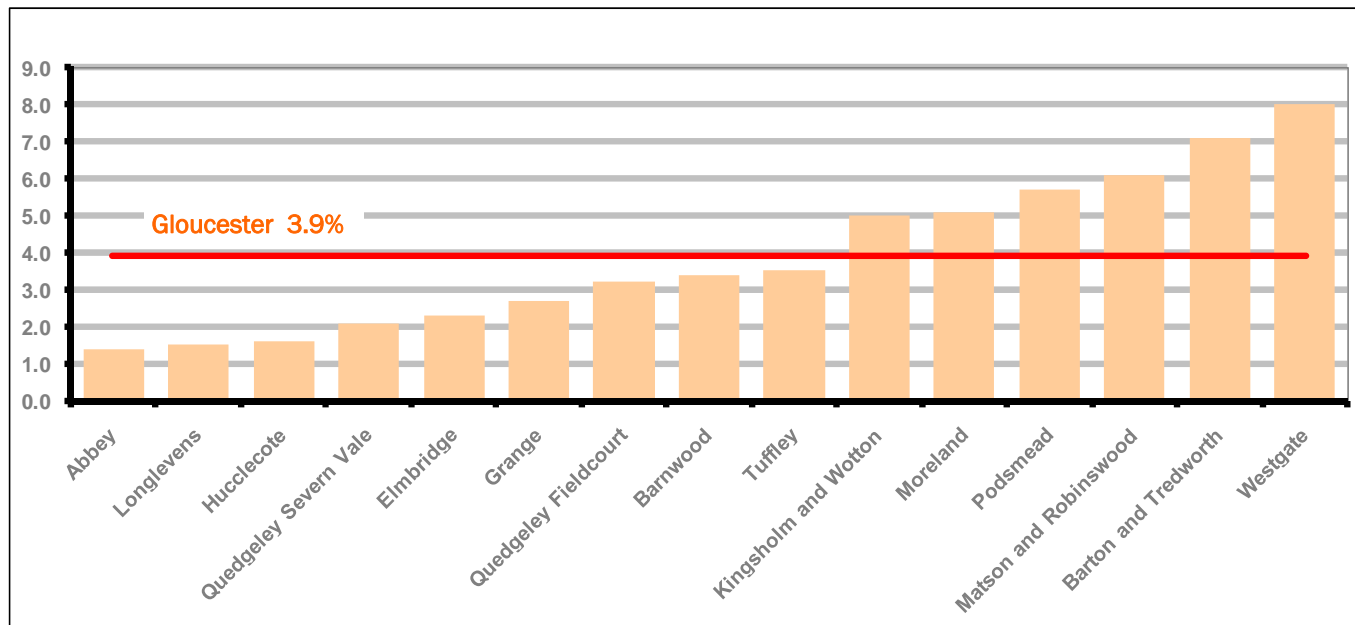
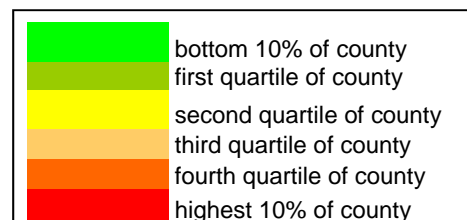


Figure 15 shows the claimant rates for Gloucester City district wards. The red line represents the average claimant rate across the City of 3.9%. Six wards lie above the average.

Table 8: Analysis of Claimant Count at Gloucester City ward level - August 2011

District	Ward	Rate	Rank*
Gloucester	Abbey	1.4	44
Gloucester	Longlevens	1.5	50
Gloucester	Hucclecote	1.6	56
Gloucester	Quedgeley Severn Vale	2.1	86
Gloucester	Elmbridge	2.3	93
Gloucester	Grange	2.7	103
Gloucester	Quedgeley Fieldcourt	3.2	113
Gloucester	Barnwood	3.4	120
Gloucester	Tuffley	3.5	122
Gloucester	Kingsholm and Wotton	5.0	132
Gloucester	Moreland	5.1	133
Gloucester	Podsmead	5.7	138
Gloucester	Matson and Robinswood	6.1	140
Gloucester	Barton and Tredworth	7.1	141
Gloucester	Westgate	8.0	142



* 1 = "best" and 142 = "worst"

Table 8 shows overall claimant rates for Gloucester City wards and their position relative to all wards in Gloucestershire.

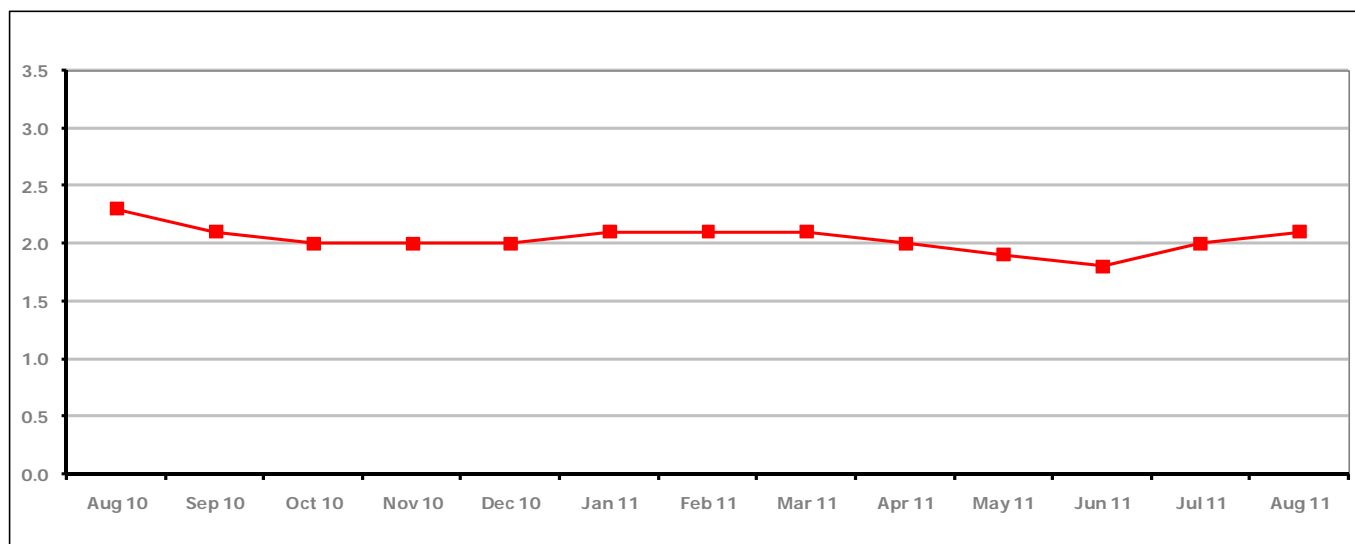
PART 4: LOCAL AUTHORITY DISTRICT AND WARD ANALYSIS**4.5 Stroud District****Claimant Rate and Claimant Count***Figure 16: Stroud District claimant rate over the last year*

Figure 16 shows the claimant rate for Stroud District increased in August 2011 to 2.1%.

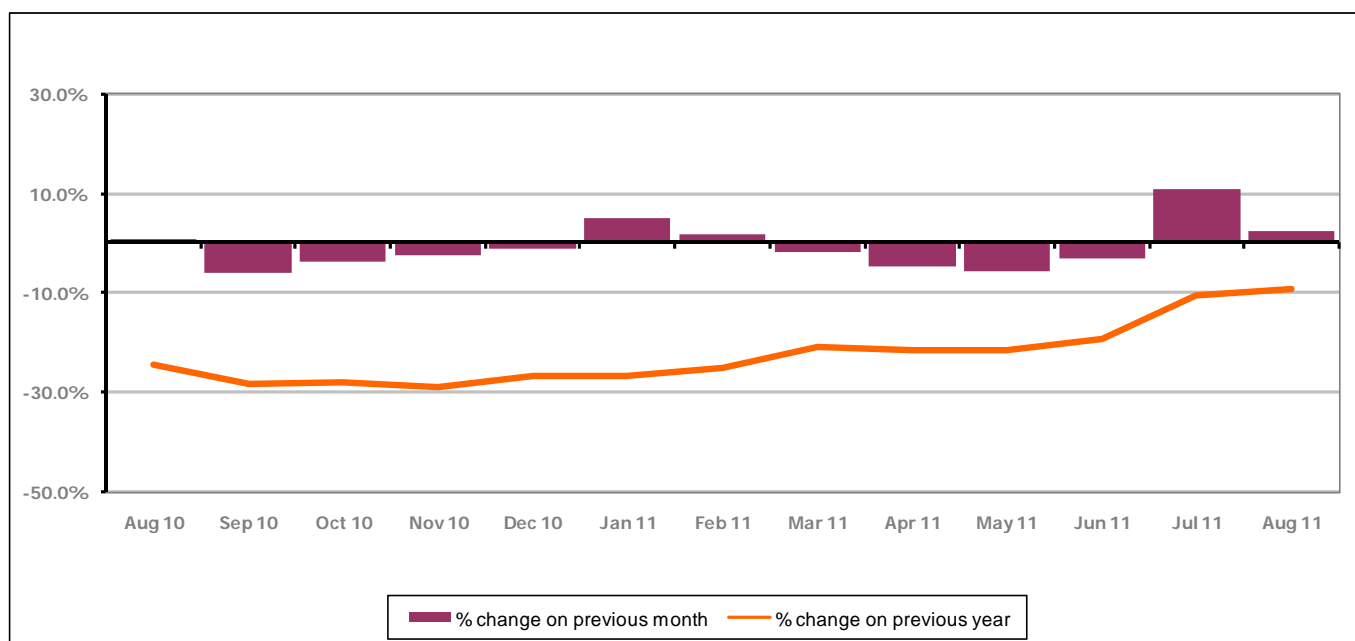
Figure 17: Stroud District claimants - Month on Month and Year on Year change

Figure 17 shows the monthly claimant count increased by +2.4% since July 2011. The change on the previous year has increased between July 2011 and August 2011 to -9.3%.

PART 4: LOCAL AUTHORITY AND DISTRICT ANALYSIS

4.5 Stroud District continued...

Figure 18: Claimant rates across Stroud District wards - August 2011

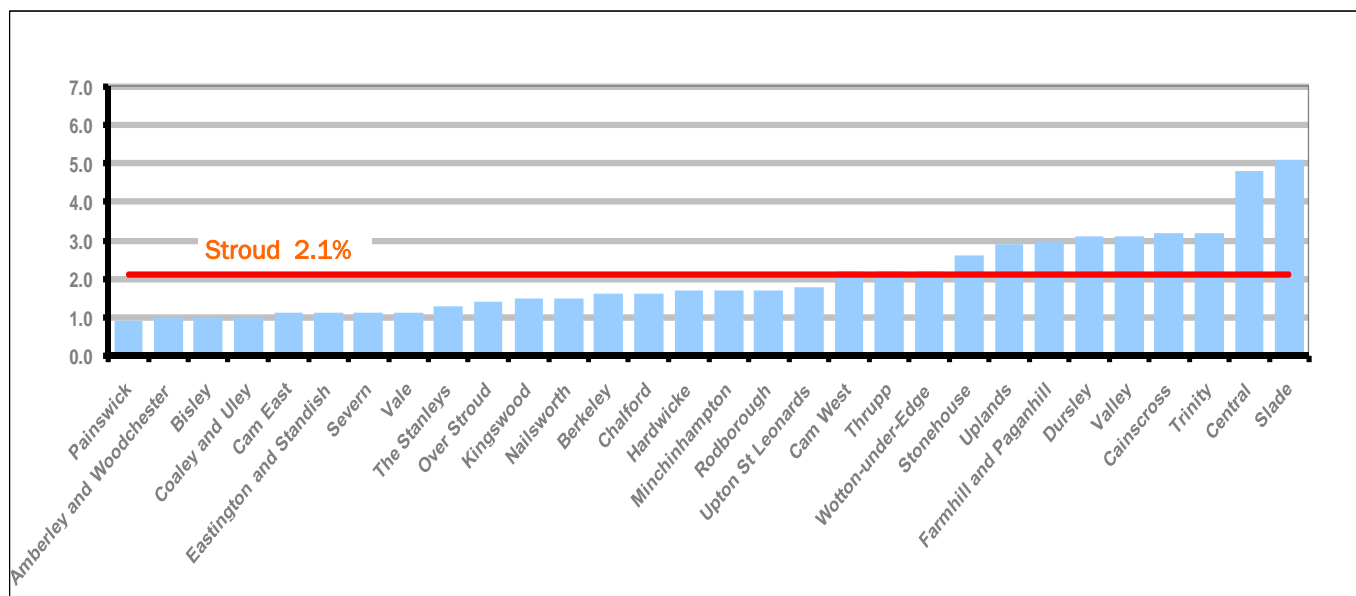
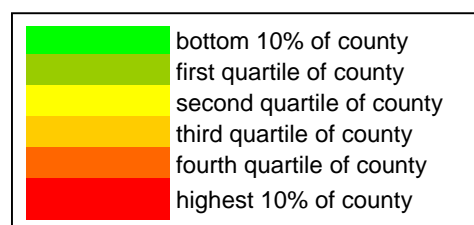


Figure 18 shows the claimant rates in Stroud District wards. The red line represents the average claimant rate across the District of 2.1%. Twelve wards are above the average.

Table 9: Analysis of Claimant Count at Stroud District ward level - August 2011

District	Ward	Rate	Rank*
Stroud	Painswick	0.9	10
Stroud	Amberley and Woodchester	1.0	14
Stroud	Bisley	1.0	14
Stroud	Coaley and Uley	1.0	14
Stroud	Cam East	1.1	22
Stroud	Eastington and Standish	1.1	22
Stroud	Severn	1.1	22
Stroud	Vale	1.1	22
Stroud	The Stanleys	1.3	37
Stroud	Over Stroud	1.4	44
Stroud	Kingswood	1.5	50
Stroud	Nailsworth	1.5	50
Stroud	Berkeley	1.6	56
Stroud	Chalford	1.6	56
Stroud	Hardwicke	1.7	63
Stroud	Minchinhampton	1.7	63
Stroud	Rodborough	1.7	63
Stroud	Upton St Leonards	1.8	69
Stroud	Cam West	2.2	89
Stroud	Thrupp	2.2	89
Stroud	Wotton-under-Edge	2.2	89
Stroud	Stonehouse	2.6	98
Stroud	Uplands	2.9	107
Stroud	Farmhill and Paganhill	3.0	108
Stroud	Dursley	3.1	111
Stroud	Valley	3.1	111
Stroud	Cainscross	3.2	113
Stroud	Trinity	3.2	113
Stroud	Central	4.8	130
Stroud	Slade	5.1	133



* 1 = "best" and 142 = "worst"

Table 9 shows overall claimant rates for Stroud District wards and their position relative to all wards in Gloucestershire.

PART 4: LOCAL AUTHORITY DISTRICT AND WARD ANALYSIS

4.6 Tewkesbury District

Claimant Rate and Claimant Count

Figure 19: Tewkesbury District claimant rate over the last year

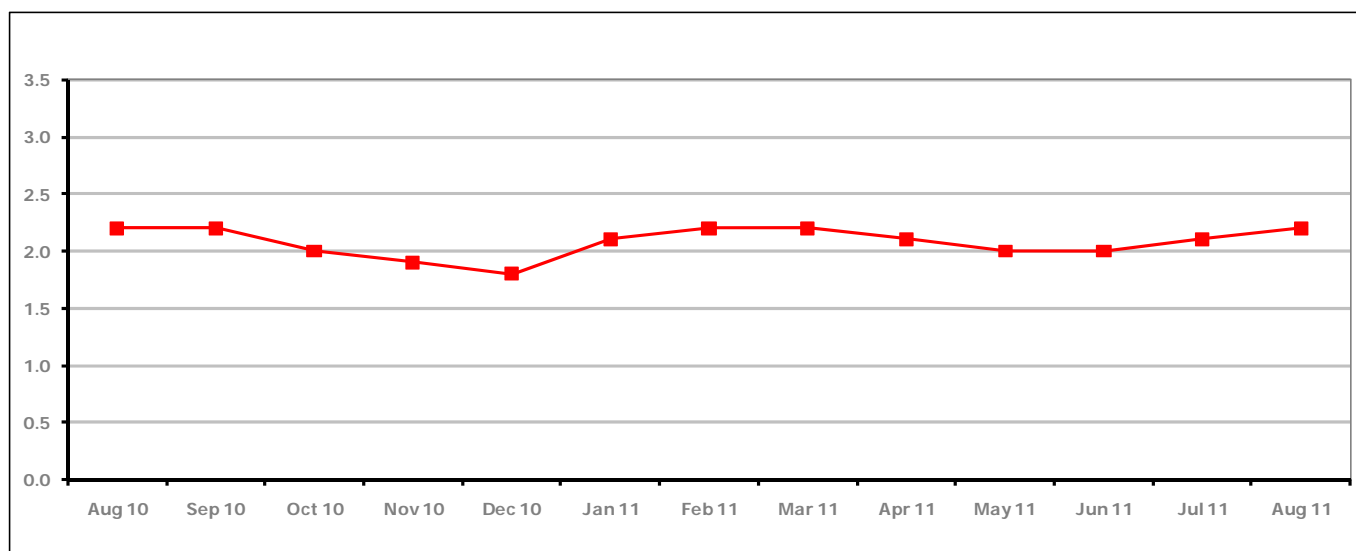


Figure 19 shows the claimant rate for Tewkesbury District increased in August 2011 to 2.2%.

Figure 20: Tewkesbury District claimants - Month on Month and Year on Year change

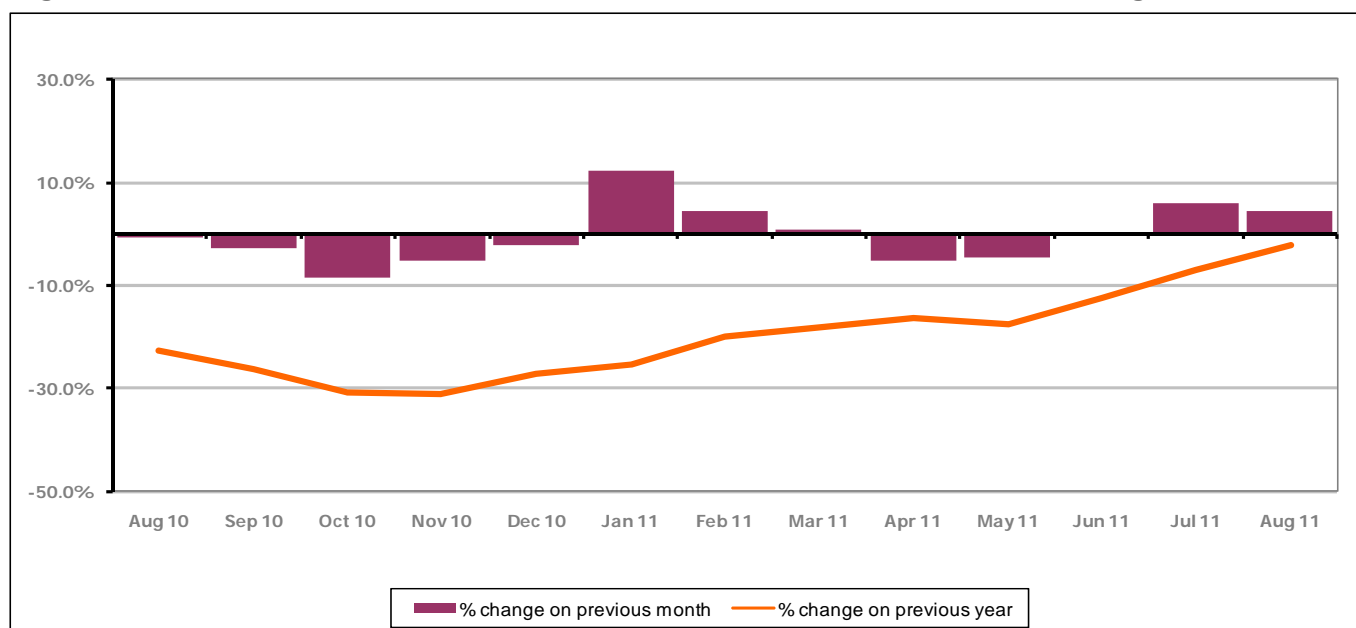


Figure 20 shows that the monthly claimant count increased in August 2011 by +4.3%. The change on the previous year increased between August 2011 and July 2011 to -2.2%.

PART 4: LOCAL AUTHORITY AND DISTRICT ANALYSIS

4.6 Tewkesbury District continued...

Figure 21: Claimant rates across Tewkesbury District wards - August 2011

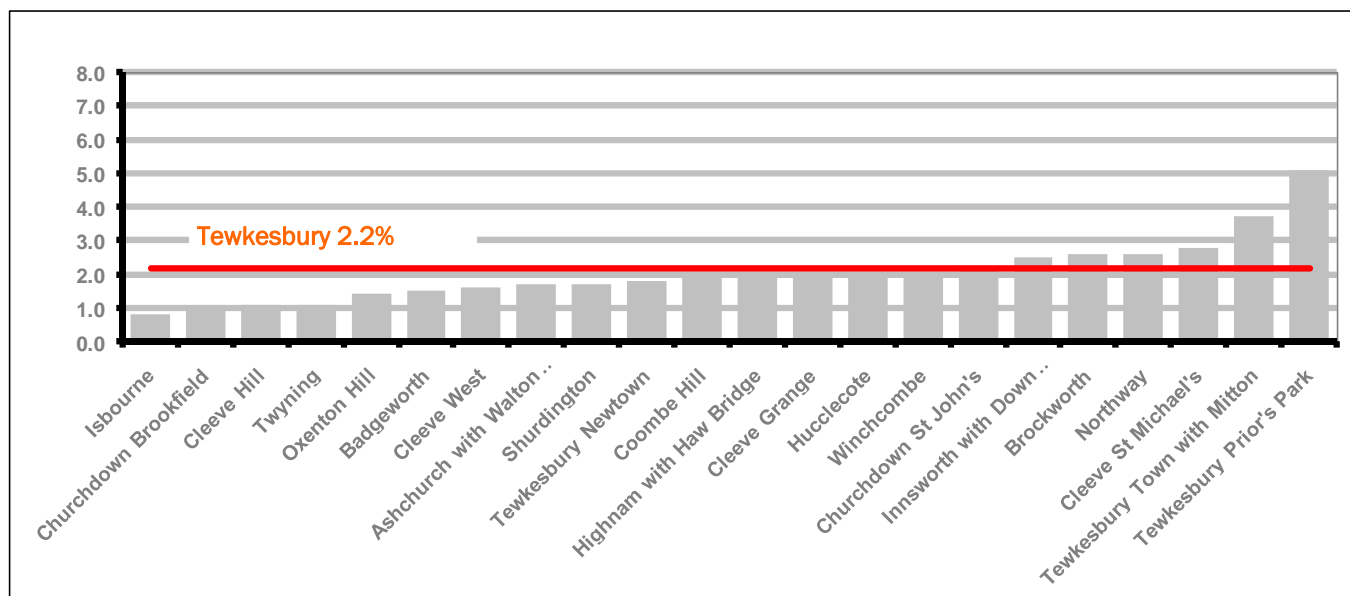
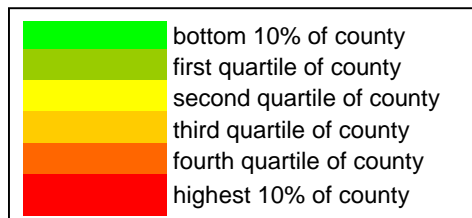


Figure 21 shows the claimant rates in Tewkesbury District wards. The red line represents the average claimant rate across the District of 2.2% and six wards are above the average.

Table 10: Analysis of Claimant Count at Tewkesbury District level - August 2011

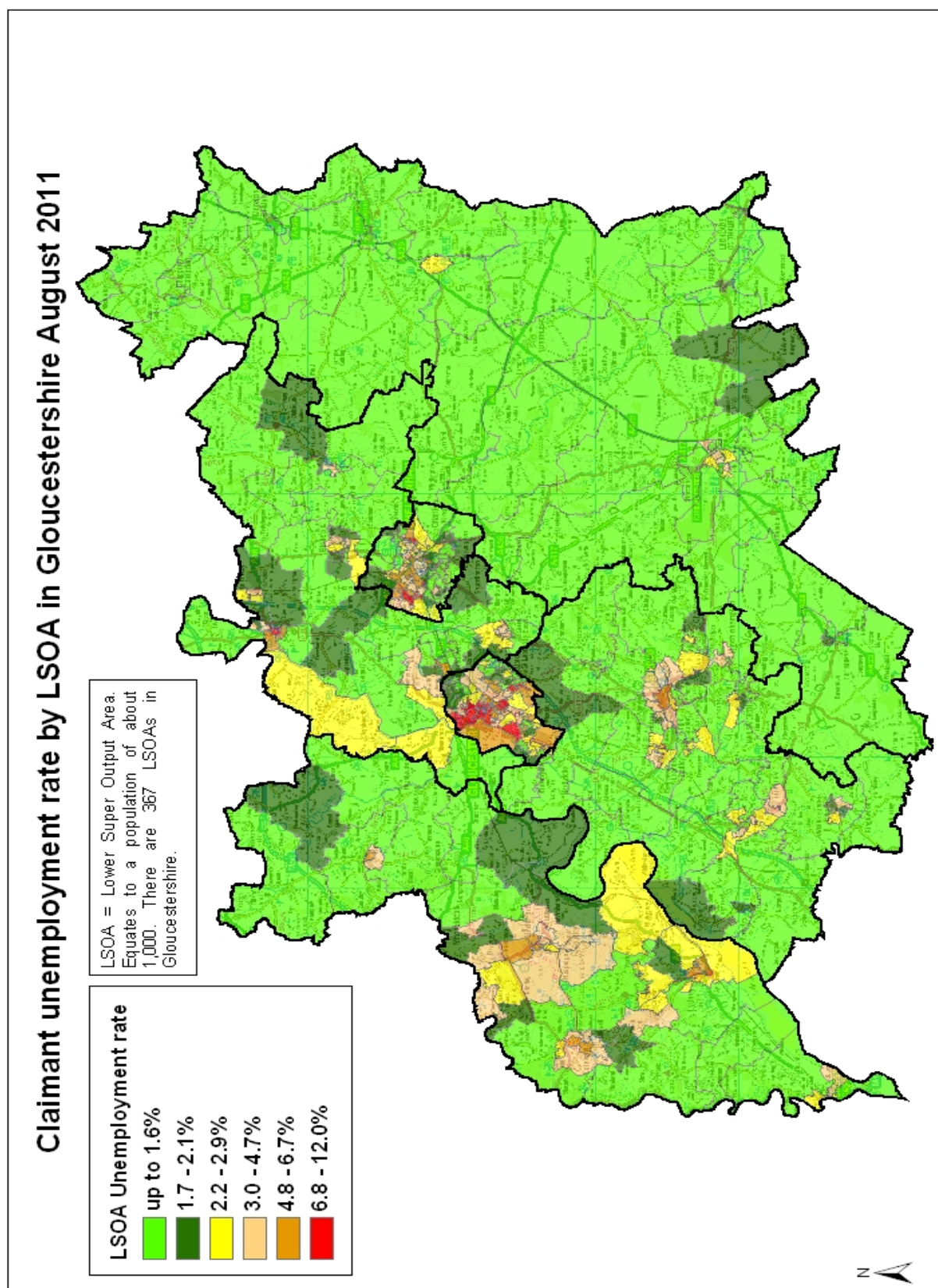
District	Ward	Rate	Rank*
Tewkesbury	Isbourne	0.8	7
Tewkesbury	Churchdown Brookfield	1.0	14
Tewkesbury	Cleeve Hill	1.1	22
Tewkesbury	Twynning	1.1	22
Tewkesbury	Oxenton Hill	1.4	44
Tewkesbury	Badgeworth	1.5	50
Tewkesbury	Cleeve West	1.6	56
Tewkesbury	Ashchurch with Walton Cardiff	1.7	63
Tewkesbury	Shurdington	1.7	63
Tewkesbury	Tewkesbury Newtown	1.8	69
Tewkesbury	Coombe Hill	1.9	75
Tewkesbury	Highnam with Haw Bridge	1.9	75
Tewkesbury	Cleeve Grange	2.0	82
Tewkesbury	Hucclecote	2.0	82
Tewkesbury	Winchcombe	2.0	82
Tewkesbury	Churchdown St John's	2.2	89
Tewkesbury	Innsworth with Down Hatherley	2.5	96
Tewkesbury	Brockworth	2.6	98
Tewkesbury	Northway	2.6	98
Tewkesbury	Cleeve St Michael's	2.8	104
Tewkesbury	Tewkesbury Town with Mitton	3.7	123
Tewkesbury	Tewkesbury Prior's Park	5.1	133



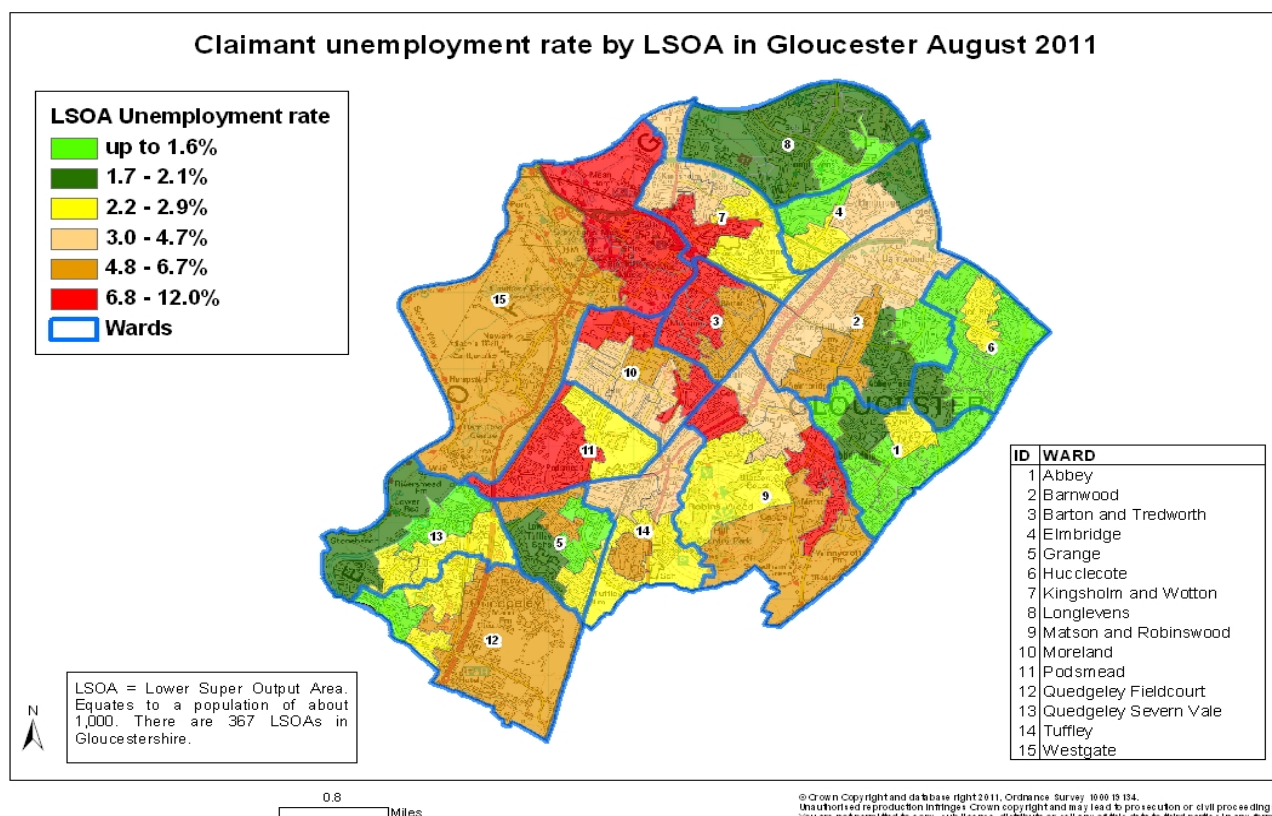
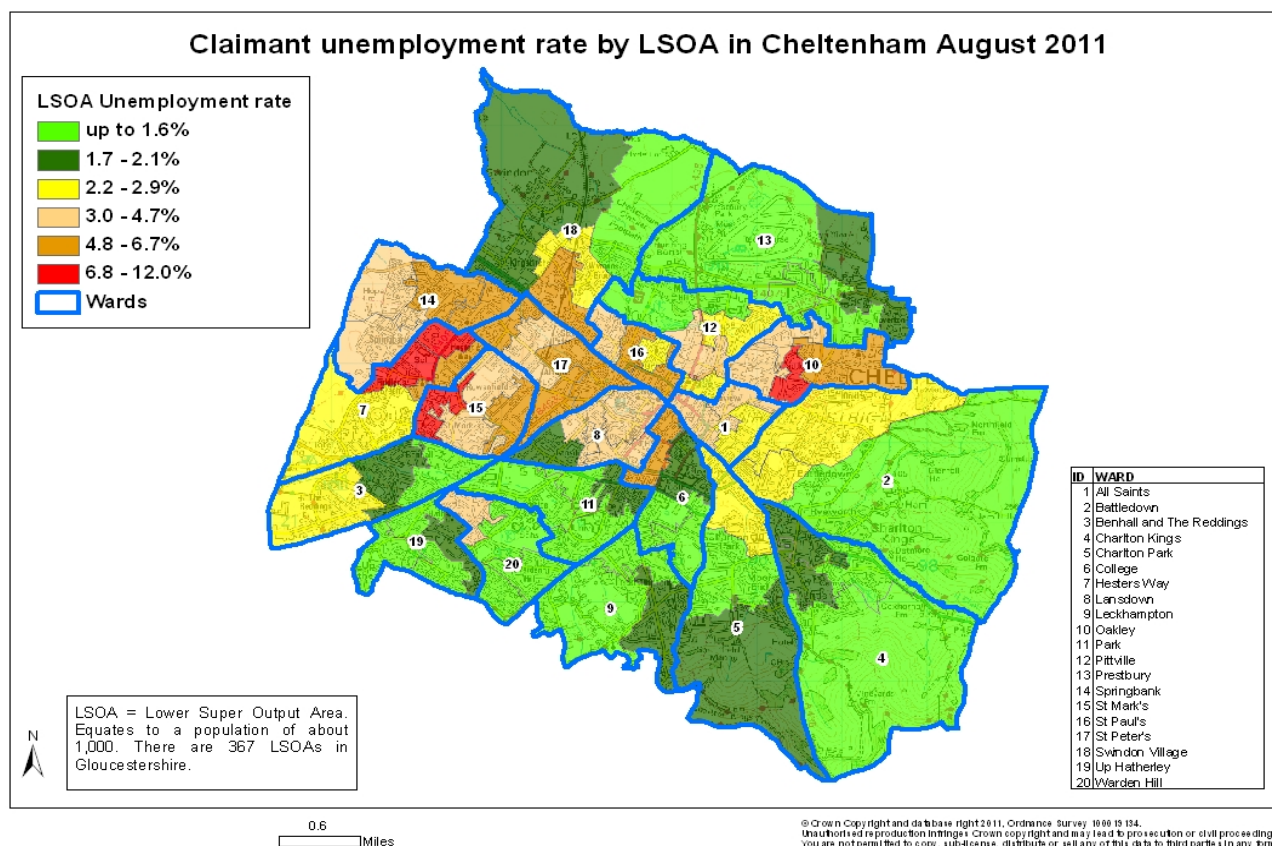
* 1 = "best" and 142 = "worst"

Table 10 shows overall claimant rates for Tewkesbury District wards and their position relative to all wards in Gloucestershire.

PART 5: MAP SHOWING DISTRIBUTION OF CLAIMANT RATE ACROSS GLOUCESTERSHIRE



PART 5: MAP SHOWING DISTRIBUTION OF CLAIMANT RATE ACROSS GLOUCESTERSHIRE



PART 6: YOUNG PEOPLE NOT IN EDUCATION, EMPLOYMENT OR TRAINING (NEET) IN GLOUCESTERSHIRE

Data provided by Prospects, the Connexions service in Gloucestershire on the situation of young people (16-18) in Gloucestershire who are not in education, employment or formal training.

Connexions Gloucestershire is required to report performance with the 16-18 age range against nationally defined criteria for counting the NEET group. The NEET group includes young people actively seeking education, employment or training as well as those young people who are either not yet ready or who are unable to access these opportunities because of their personal circumstances. The figures quoted below include young people in both of these categories.

Summary

As at the end of August 2011 there were 658 young people aged 16-18 not in education, employment or training in Gloucestershire and this figure translates into an adjusted (*) 16-18 NEET population of 5.2%. The total number of NEET increased by 113 young people in August 2011 compared to July 2011. All districts saw an increase in their NEET figure.

Total NEET Group by District Area

August 2011 NEET Data

	Cheltenham	Cotswold	Forest	Gloucester	Stroud	Tewkesbury	Total
Number of NEET	170	47	81	184	94	82	658
Cohort	2129	1715	1902	3766	2117	1575	13204
% NEET	8.0%	2.7%	4.3%	4.9%	4.4%	5.2%	5.2%

If you would like to receive any further information on Gloucestershire's NEET strategy then please contact Ruth.Critchlow@gloucestershire.gov.uk or telephone 01452 551267.

(*) Adjustment includes a proportion of young people aged 16-18 whose outcomes are not-known to Connexions Gloucestershire