

# Unemployment Bulletin

Issue 80 March 2015

## Contents

### Part 1: Summary

A summary of unemployment data at district, County, regional and national level 1

### Part 2: County

Unemployment figures for the County compared to the South West and the rest of the UK 3

### Part 3: Districts

A comparative break down of unemployment figures by district 4

### Part 4: Wards

Further breakdown of unemployment figures by ward:

Cheltenham	6
Cotswolds	8
Forest of Dean	10
Gloucester	12
Stroud	14
Tewkesbury	16

### Part 5: Map

Distribution of claimant rate across Gloucestershire 18

### Part 6: Youth Unemployment

Unemployment data for the 18-24 year old age group 20

### Part 7: Young People

Data about Young People Not in Education, Employment or Training (NEET) 22

Please note: the ward and LSOA boundaries used in this report have been updated. This means figures for these areas are not comparable with those reported in previous bulletins.

## INTRODUCTION

The Unemployment Bulletin provides a monthly update on unemployment data for Gloucestershire, the South West region and the United Kingdom. It is produced by the Strategic Needs Analysis Team in the County Council's Strategy and Challenge function. The data is sourced from the Office for National Statistics via Nomis ([www.nomis.co.uk](http://www.nomis.co.uk)).

The claimant count measures the number of people claiming unemployment-related benefit (currently Job Seeker's allowance). The claimant rate is the number of claimants as a proportion of the working age population.

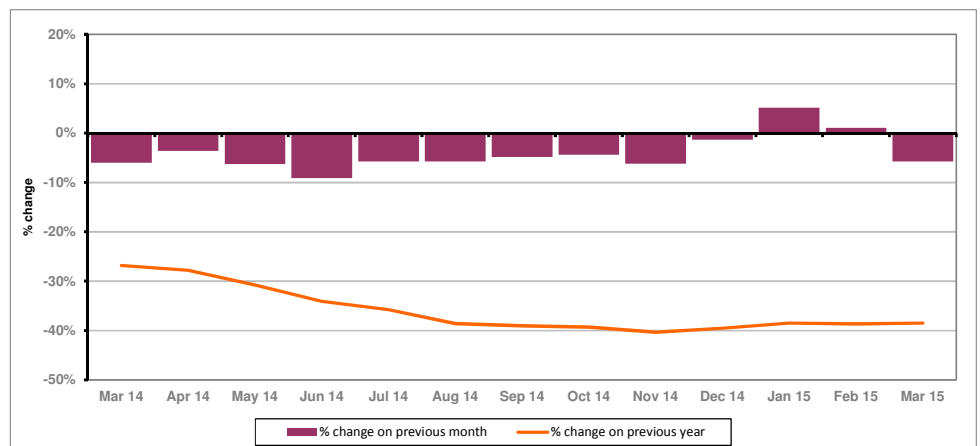
## PART 1: SUMMARY

**The claimant rate in Gloucestershire was 1.2% in March 2015.** This was a 0.1% decrease on the February 2015 figure. The UK rate also decreased to 2.0% while the South West rate remained the same as the previous month at 1.3%. Gloucestershire's rate was 0.1% lower the South West average of 1.3%, and 0.8% lower than the UK average of 2.0%.

**The claimant count in Gloucestershire in March 2015 decreased by 280 people.** The amount of people claiming in March 2015 was 5.7% lower than the number in February 2015. This compares to a 5.3% decrease in the South West and a 3.7% decrease for the UK.

**The year on year claimant count in Gloucestershire has increased since last month.** The count was 38.5% lower in March 2015 than at the same point in the previous year as shown in the graph below.

Gloucestershire claimants - Month on Month and Year on Year change: March 2014 to March 2015



Source: ONS Crown Copyright Reserved

Produced by:

**Strategic Needs Analysis Team**  
Strategy and Challenge  
Gloucestershire County Council  
April 2015

## DISTRICTS AT A GLANCE

At a glance unemployment information grouped by district. Includes:

**Claim count:** Total number of people claiming Job Seekers Allowance in March 2015

**Compared to last month:** How much larger/smaller March's claimant count is compared to February, expressed as a %

**Claimant rate:** The % of working population claiming Job Seekers Allowance in March 2015

**Highest claiming ward:** The ward with the highest claim count in that district and the rate

### CHELTEMHAM BOROUGH

Claim count:	915
Compared to last month:	-4.8%
Claimant rate:	1.2%
Highest claiming ward	Oakley (2.2%) and Hesters Way (2.2%)

### GLOUCESTER CITY

Claim count:	1,589
Compared to last month:	-5.5%
Claimant rate:	2.0%
Highest claiming ward	Westgate (4.4%)

### COTSWOLD DISTRICT

Claim count:	354
Compared to last month:	-8.5%
Claimant rate:	0.7%
Highest claiming ward	Cirencester Watermoor (1.7%)

### STROUD DISTRICT

Claim count:	585
Compared to last month:	-2.5%
Claimant rate:	0.8%
Highest claiming ward	Slade (2.3%)

### FOREST OF DEAN

Claim count:	645
Compared to last month:	-4.4%
Claimant rate:	1.3%
Highest claiming ward	Cinderford West (2.9%)

### TEWKESBURY BOROUGH

Claim count:	536
Compared to last month:	-10.7%
Claimant rate:	1.0%
Highest claiming ward	Tewkesbury Prior's Park (3.1%)

## YOUNG PEOPLE NOT IN EDUCATION, EMPLOYMENT OR TRAINING (NEET)

At the end of March 2015 there were 533 young people aged 16-18 not in education, employment or training in Gloucestershire and this figure translates into an adjusted (\*) 16-18 NEET population of 3.75%.

## PART 2: UK, SW AND GLOUCESTERSHIRE INDICATORS

The unemployment situation in Gloucestershire compared to the South West and the UK.

### Claimant Rate

Figure 1: Claimant Rate for Gloucestershire, the South West and UK over the past year

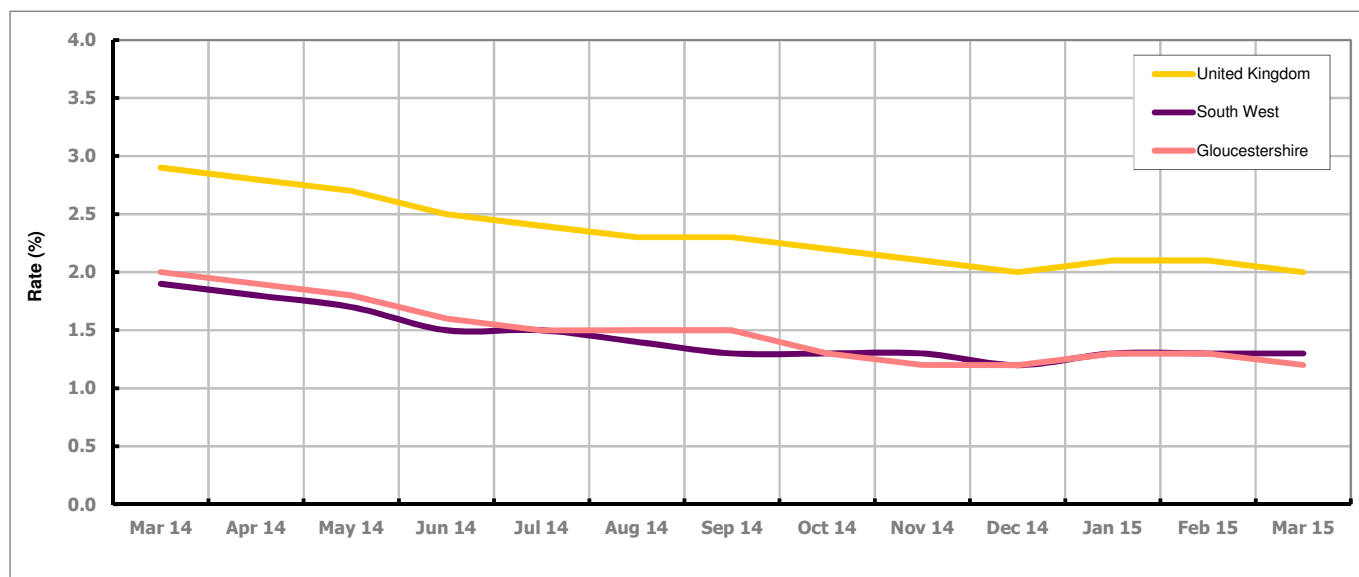


Figure 1 shows the claimant rate for Gloucestershire at 1.2% in March 2015. Between March and September 2014 the Gloucestershire rate was generally higher than the South West, it has been the same as the South West average since October 2014 with the exception of March 2014 when it was lower. It has been persistently lower by approximately 0.8% against the UK average. The March 2015 rate represented a 0.1% decrease on February 2015.

### Claimant Count

Table 1: Analysis of UK, South West and Gloucestershire Claimant Counts

Area	Claimant Count in March 2015	% change on February 2015	Average % change over the last six months	Consecutive months decreasing
UK	826,849	-3.7%	-1.2%	0
South West	41,853	-5.3%	-0.5%	0
Gloucestershire	4,624	-5.7%	-1.3%	0

Table 1 shows that in March 2015, the number of claimants in Gloucestershire was 1.3% lower than the number in February 2015.

The average change in claimants in Gloucestershire for the six months to March 2015 was -1.3%.

## PART 3: LOCAL AUTHORITY DISTRICT ANALYSIS

### Claimant Rate and Claimant Count

Figure 2: Claimant Rate (%) across Gloucestershire - March 2015

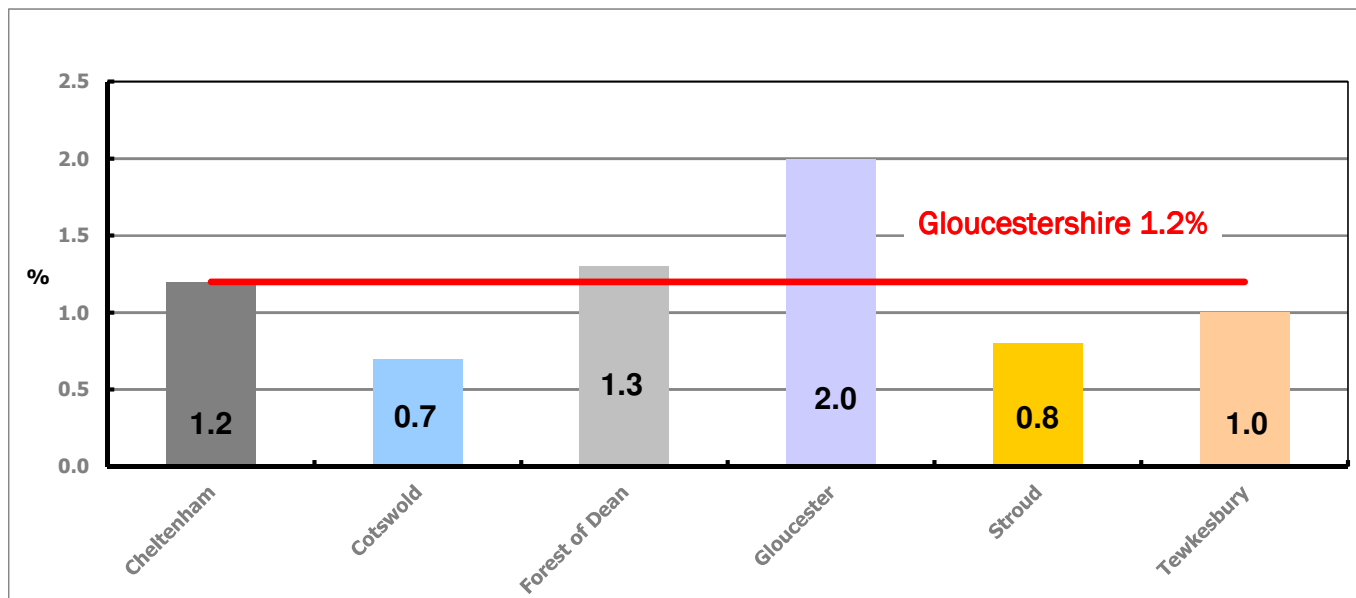


Figure 2 shows the claimant rate for March 2015 in Gloucestershire. Between February 2015 and March 2015, the rate in Cheltenham, Cotswold, Gloucester, Stroud and Tewkesbury decreased, while the rate in Forest of Dean remained the same.

Figure 3: Total claimants over the past year across Gloucestershire Districts

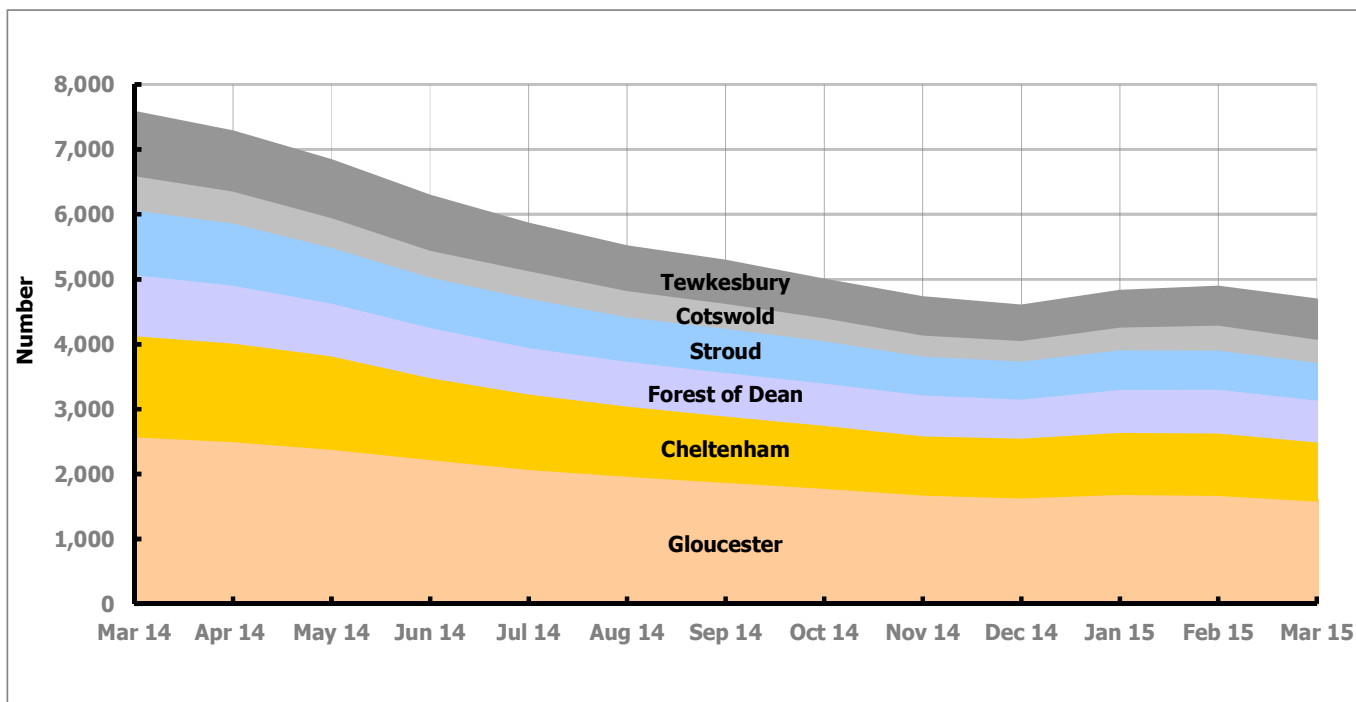


Figure 3 shows the overall claimant count by district over the past year. The number of claimants has decreased over the last year, with the exception of January and February 2015 when there was an increase.

Table 2: Analysis of Gloucestershire and District Claimant Counts

Total	Mar 15 Number	Mar 15 Rate	Feb 15 Number	Feb 15 Rate	Monthly change	% monthly change	Monthly change of rate
<b>Gloucestershire</b>	4,624	1.2	4,904	1.3	-280	-5.7%	-0.1
Cheltenham	915	1.2	961	1.3	-46	-4.8%	-0.1
Cotswold	354	0.7	387	0.8	-33	-8.5%	-0.1
Forest of Dean	645	1.3	675	1.3	-30	-4.4%	0.0
Gloucester	1,589	2.0	1,681	2.1	-92	-5.5%	-0.1
Stroud	585	0.8	600	0.9	-15	-2.5%	-0.1
Tewkesbury	536	1.0	600	1.2	-64	-10.7%	-0.2

Table 2 shows the change in the claimant count in March 2015 compared to February 2015. All districts saw a decrease in the number of claimants.

Table 3: Analysis of Male Gloucestershire and District Claimant Counts

Male	Mar 15 Number	Mar 15 Rate	Feb 15 Number	Feb 15 Rate	Monthly change	% monthly change	Monthly change of rate
<b>Gloucestershire</b>	3,019	1.6	3,211	1.7	-192	-6.0%	-0.1
Cheltenham	595	1.6	635	1.7	-40	-6.3%	-0.1
Cotswold	240	1.0	265	1.1	-25	-9.4%	-0.1
Forest of Dean	411	1.6	437	1.7	-26	-5.9%	-0.1
Gloucester	1,060	2.6	1,119	2.8	-59	-5.3%	-0.2
Stroud	365	1.0	382	1.1	-17	-4.5%	-0.1
Tewkesbury	348	1.4	373	1.5	-25	-6.7%	-0.1

Table 3 shows the change in the male claimant count in March 2015 compared to February 2015. All districts saw a decrease in the number of male claimants.

Table 4: Analysis of Female Gloucestershire and District Claimant Counts

Female	Mar 15 Number	Mar 15 Rate	Feb 15 Number	Feb 15 Rate	Monthly change	% monthly change	Monthly change of rate
<b>Gloucestershire</b>	1,605	0.8	1,693	0.9	-88	-5.2%	-0.1
Cheltenham	320	0.9	326	0.9	-6	-1.8%	0.0
Cotswold	114	0.4	122	0.5	-8	-6.6%	-0.1
Forest of Dean	234	0.9	238	0.9	-4	-1.7%	0.0
Gloucester	529	1.3	562	1.4	-33	-5.9%	-0.1
Stroud	220	0.6	218	0.6	2	0.9%	0.0
Tewkesbury	188	0.7	227	0.9	-39	-17.2%	-0.2

Table 4 shows the change in the female claimant count in March 2015 compared to February 2015. Stroud saw a small increase in the number of female claimants, while the other districts saw a decrease.

## PART 4: LOCAL AUTHORITY DISTRICT AND WARD ANALYSIS

This section covers the six districts and a comparison of their constituent wards.

### 4.1 Cheltenham Borough

#### Claimant Rate and Claimant Count

Figure 4: Cheltenham Borough claimant rate over the last year

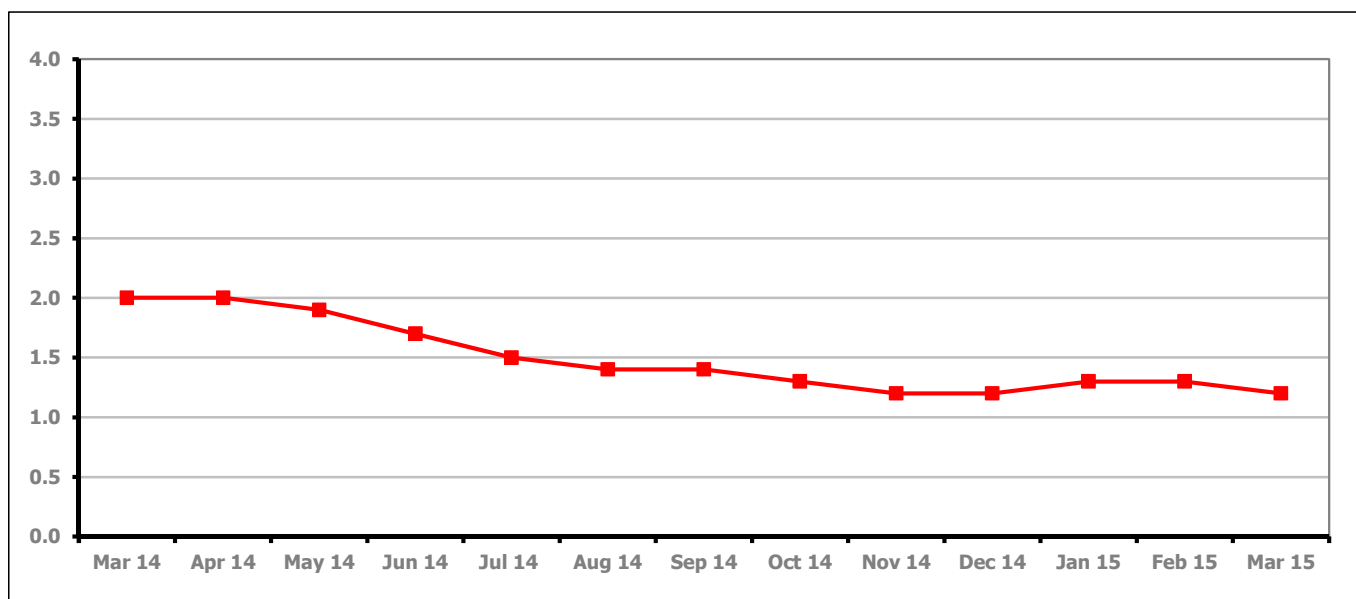


Figure 4 shows the claimant rate in Cheltenham decreased in March 2015 to 1.2%.

Figure 5: Cheltenham Borough claimants - Month on Month and Year on Year change

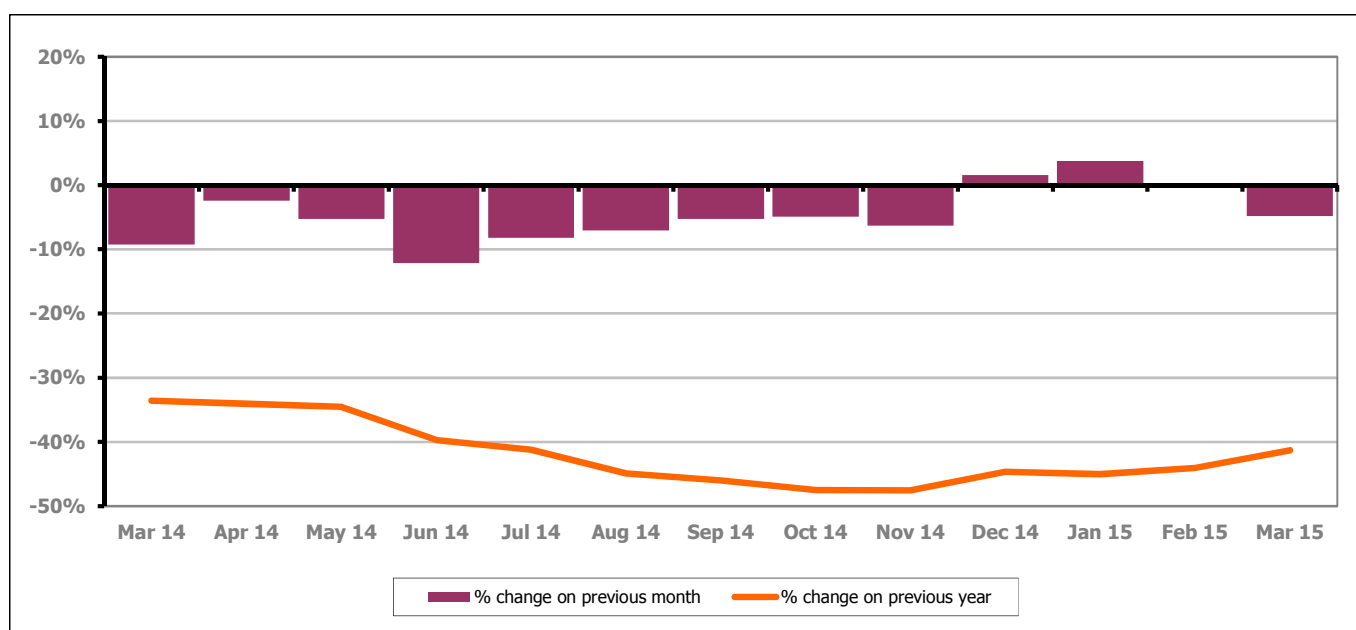


Figure 5 shows the claimant count decreased by 4.8% since last month. The change on the previous year has increased between February and March 2015 to -41.3%.

## PART 4: LOCAL AUTHORITY DISTRICT AND WARD ANALYSIS

### 4.1 Cheltenham Borough continued...

Figure 6: Claimant rates across Cheltenham Borough wards - March 2015

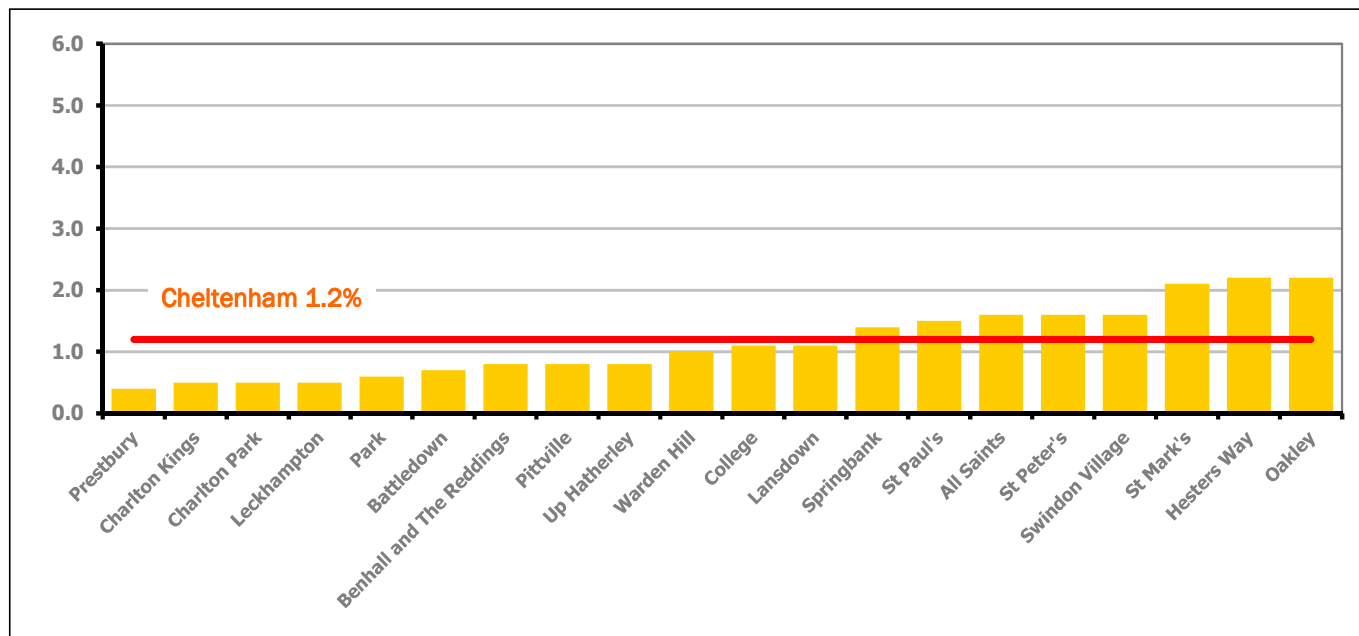
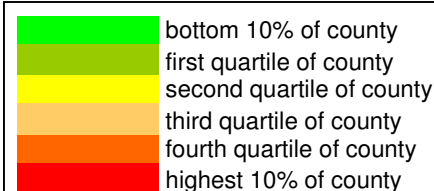


Figure 6 shows the claimant rates for Cheltenham Borough wards. The red line represents the average claimant rate across the Borough of 1.2%. Eight wards lie above the average.

Table 5: Analysis of Claimant Count at Cheltenham Borough ward level - March 2015

District	Ward	Rate	Rank*
Cheltenham	Prestbury	0.4	15
Cheltenham	Charlton Kings	0.5	21
Cheltenham	Charlton Park	0.5	21
Cheltenham	Leckhampton	0.5	21
Cheltenham	Park	0.6	34
Cheltenham	Battledown	0.7	45
Cheltenham	Benhall and The Reddings	0.8	61
Cheltenham	Pittville	0.8	61
Cheltenham	Up Hatherley	0.8	61
Cheltenham	Warden Hill	1.0	86
Cheltenham	College	1.1	95
Cheltenham	Lansdown	1.1	95
Cheltenham	Springbank	1.4	112
Cheltenham	St Paul's	1.5	117
Cheltenham	All Saints	1.6	119
Cheltenham	St Peter's	1.6	119
Cheltenham	Swindon Village	1.6	119
Cheltenham	St Mark's	2.1	130
Cheltenham	Hesters Way	2.2	131
Cheltenham	Oakley	2.2	131



\* 1 = "best" and 142 = "worst"

Table 5 shows overall claimant rates for Cheltenham Borough wards and their position relative to all wards in Gloucestershire.

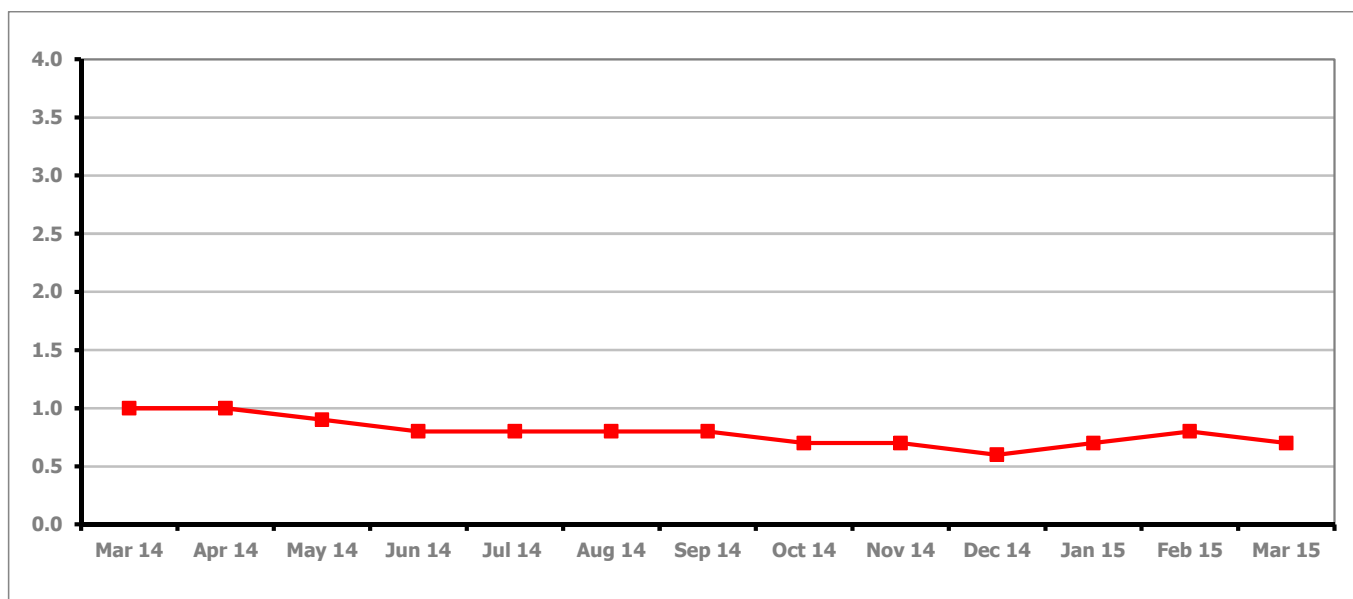
**PART 4: LOCAL AUTHORITY DISTRICT AND WARD ANALYSIS****4.2 Cotswold District****Claimant Rate and Claimant Count***Figure 7: Cotswold District claimant rate over the last year*

Figure 7 shows the claimant rate in Cotswold District decreased in March 2015 to 0.7%.

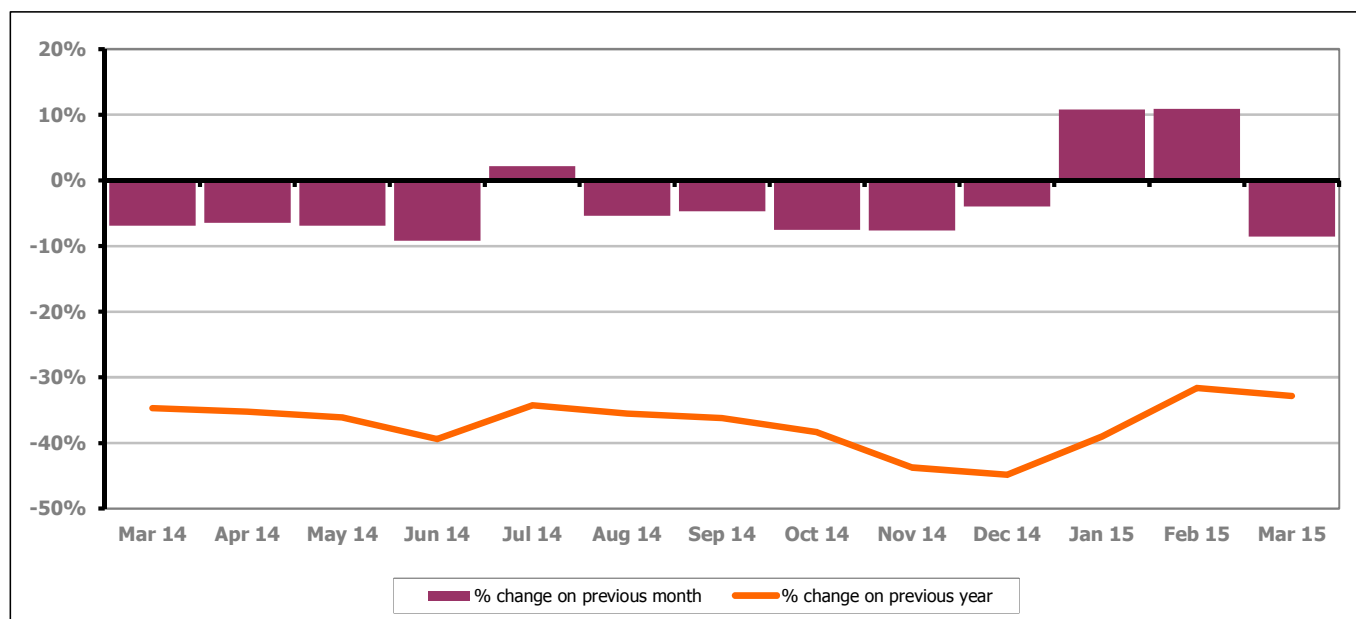
*Figure 8: Cotswold District claimants - Month on Month and Year on Year change*

Figure 8 shows the claimant count decreased by 8.5% since February 2015. The change on the previous year has decreased between February and March 2015 to -32.8%.



## PART 4: LOCAL AUTHORITY DISTRICT AND WARD ANALYSIS

### 4.2 Cotswold District continued...

Figure 9: Claimant rates across Cotswold District wards - March 2015

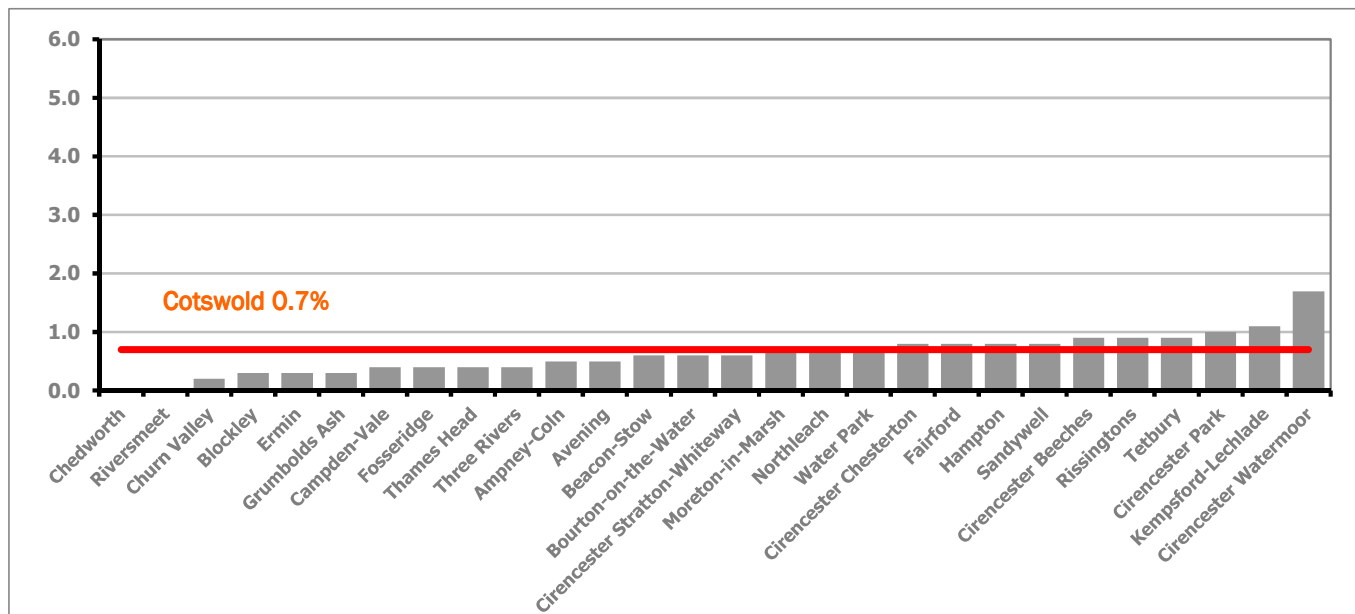
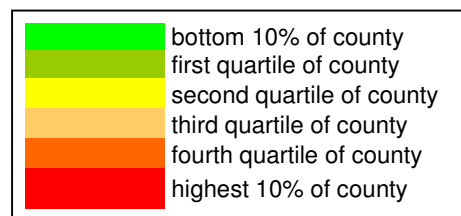


Figure 9 shows the claimant rates for Cotswold District wards. The red line represents the average claimant rate across the District of 0.7%. Ten wards lie above the average.

Table 6: Analysis of Claimant Count at Cotswold District ward level - March 2015

District	Ward	Rate	Rank*
Cotswolds	Chedworth	<0.2	1
Cotswolds	Riversmeet	<0.2	1
Cotswolds	Churn Valley	0.2	4
Cotswolds	Blockley	0.3	5
Cotswolds	Ermin	0.3	5
Cotswolds	Grumbolds Ash	0.3	5
Cotswolds	Campden-Vale	0.4	13
Cotswolds	Fosseridge	0.4	13
Cotswolds	Thames Head	0.4	13
Cotswolds	Three Rivers	0.4	13
Cotswolds	Ampney-Coln	0.5	19
Cotswolds	Avening	0.5	19
Cotswolds	Beacon-Stow	0.6	32
Cotswolds	Bourton-on-the-Water	0.6	32
Cotswolds	Cirencester Stratton-Whiteway	0.6	32
Cotswolds	Moreton-in-Marsh	0.7	43
Cotswolds	Northleach	0.7	43
Cotswolds	Water Park	0.7	43
Cotswolds	Cirencester Chesterton	0.8	59
Cotswolds	Fairford	0.8	59
Cotswolds	Hampton	0.8	59
Cotswolds	Sandywell	0.8	59
Cotswolds	Cirencester Beeches	0.9	75
Cotswolds	Rissingtons	0.9	75
Cotswolds	Tetbury	0.9	75
Cotswolds	Cirencester Park	1.0	84
Cotswolds	Kempsford-Lechlade	1.1	93
Cotswolds	Cirencester Watermoor	1.7	122



\* 1 = "best" and 142 = "worst"

Table 6 shows overall claimant rates for Cotswold District wards and their position relative to all wards in Gloucestershire.

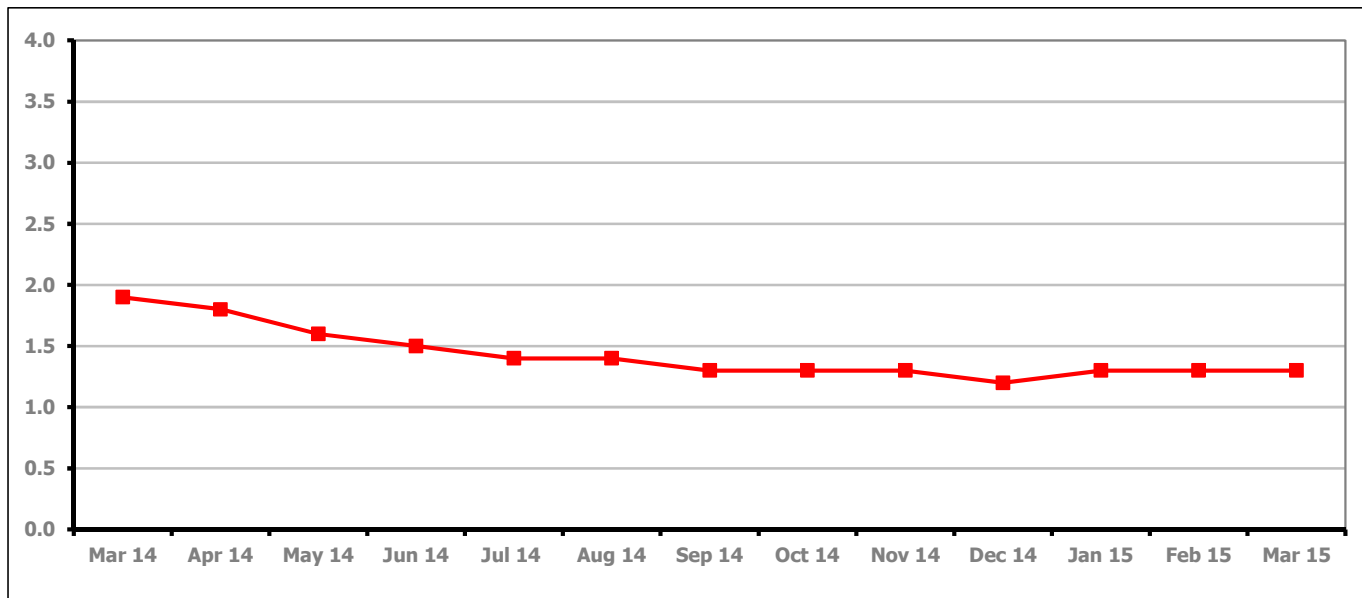
**PART 4: LOCAL AUTHORITY DISTRICT AND WARD ANALYSIS****4.3 Forest of Dean District****Claimant Rate and Claimant Count***Figure 10: Forest of Dean District claimant rate over the last year*

Figure 10 shows the claimant rate in the Forest of Dean remained the same as the last two months at 1.3%.

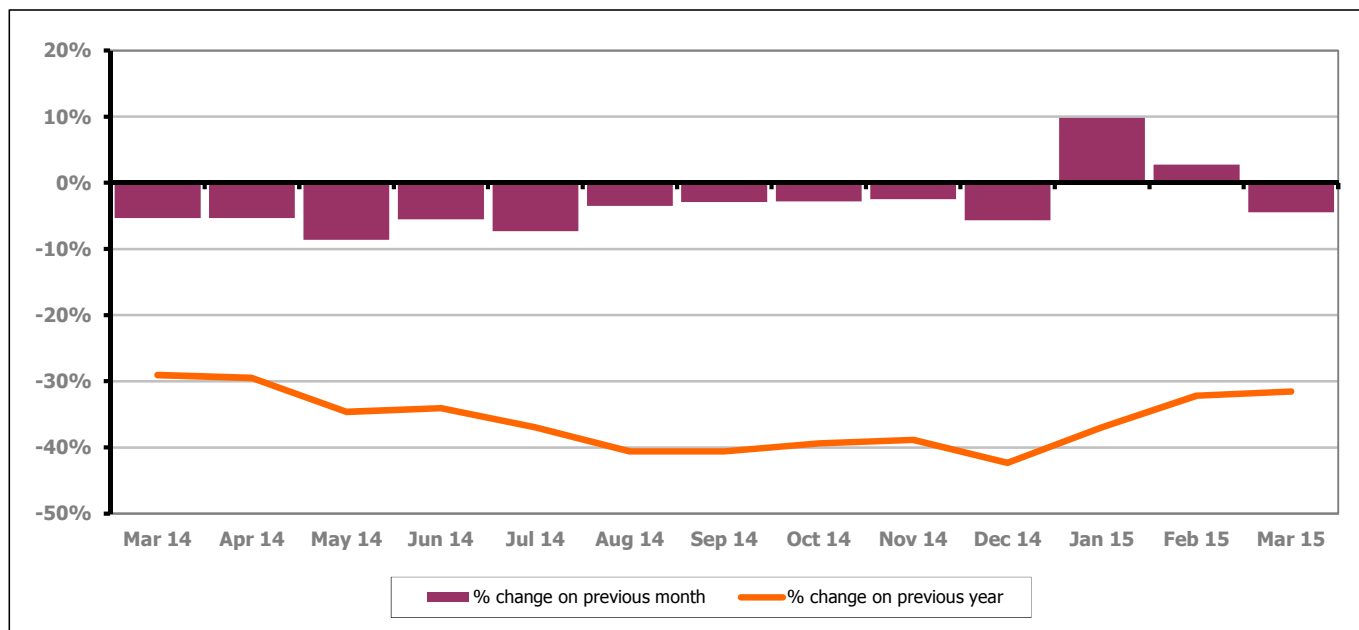
*Figure 11: Forest of Dean District claimants - Month on Month and Year on Year change*

Figure 11 shows the claimant count decreased by 4.4% since February 2015. The change on the previous year has increased between February and March 2015 to -31.5%.

## PART 4: LOCAL AUTHORITY DISTRICT AND WARD ANALYSIS

### 4.3 Forest of Dean District continued...

Figure 12: Claimant rates across Forest of Dean District wards - March 2015

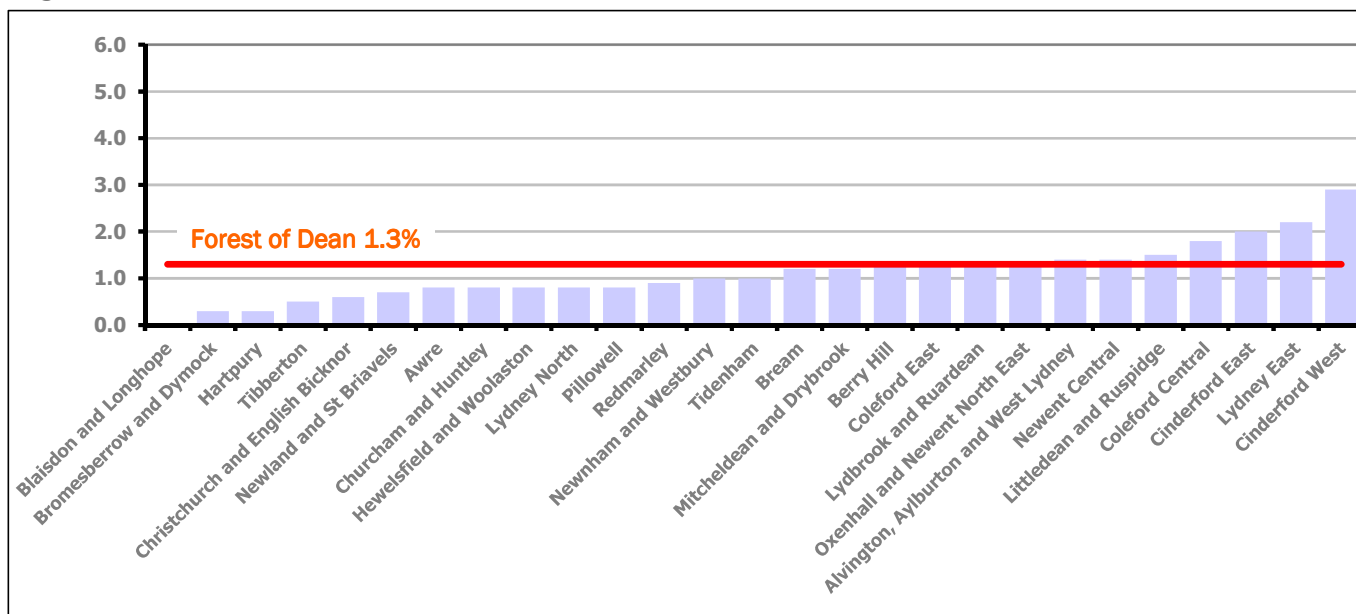
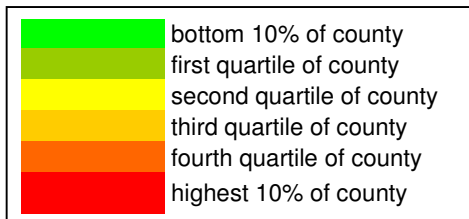


Figure 12 shows the claimant rates for Forest of Dean District wards. The red line represents the average claimant rate across the District of 1.3%. Seven wards lie above the average.

Table 7: Analysis of Claimant Count at Forest of Dean District ward level - March 2015

District	Ward	Rate	Rank*
Forest	Blaisdon and Longhope	<0.3	1
Forest	Bromesberrow and Dymock	0.3	6
Forest	Hartpury	0.3	6
Forest	Tibberton	0.5	20
Forest	Christchurch and English Bicknor	0.6	33
Forest	Newland and St Briavels	0.7	44
Forest	Awre	0.8	60
Forest	Churcham and Huntley	0.8	60
Forest	Hewelsfield and Woolaston	0.8	60
Forest	Lydney North	0.8	60
Forest	Pillowell	0.8	60
Forest	Redmarley	0.9	76
Forest	Newnham and Westbury	1.0	85
Forest	Tidenham	1.0	85
Forest	Bream	1.2	100
Forest	Mitcheldean and Drybrook	1.2	100
Forest	Berry Hill	1.3	106
Forest	Coleford East	1.3	106
Forest	Lydbrook and Ruardean	1.3	106
Forest	Oxenhall and Newent North East	1.3	106
Forest	Alvington, Aylburton and West Lydney	1.4	111
Forest	Newent Central	1.4	111
Forest	Littledean and Ruspidge	1.5	116
Forest	Coleford Central	1.8	125
Forest	Cinderford East	2.0	126
Forest	Lydney East	2.2	130
Forest	Cinderford West	2.9	136



\* 1 = "best" and 142 = "worst"

Table 7 shows overall claimant rates for the Forest of Dean District wards and their position relative to all wards in Gloucestershire.

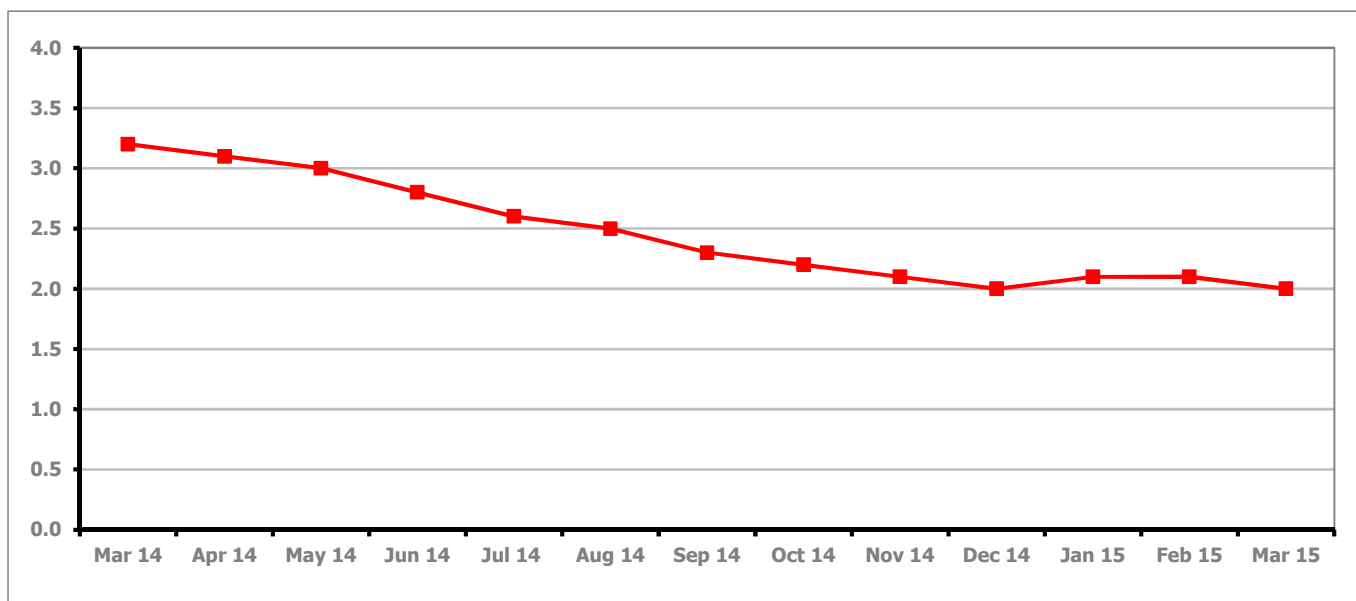
**PART 4: LOCAL AUTHORITY DISTRICT AND WARD ANALYSIS****4.4 Gloucester City****Claimant Rate and Claimant Count***Figure 13: Gloucester City claimant rate over the last year*

Figure 13 shows the claimant rate for Gloucester City decreased in March 2015 to 2.0%.

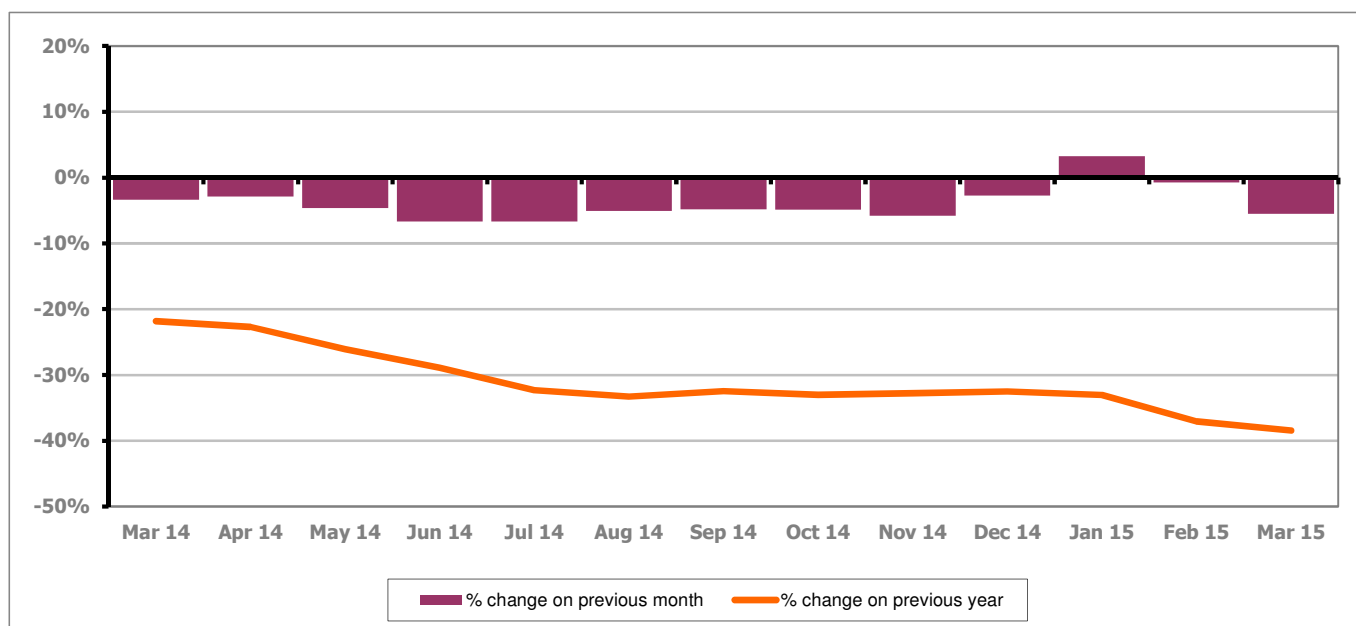
*Figure 14: Gloucester City claimants - Month on Month and Year on Year change*

Figure 14 shows the monthly claimant count decreased by 5.5% since February 2015. The change on the previous year has decreased between February and March 2015 to -38.4%.

## PART 4: LOCAL AUTHORITY DISTRICT AND WARD ANALYSIS

### 4.4 Gloucester City continued...

Figure 15: Claimant rates across Gloucester City wards - March 2015

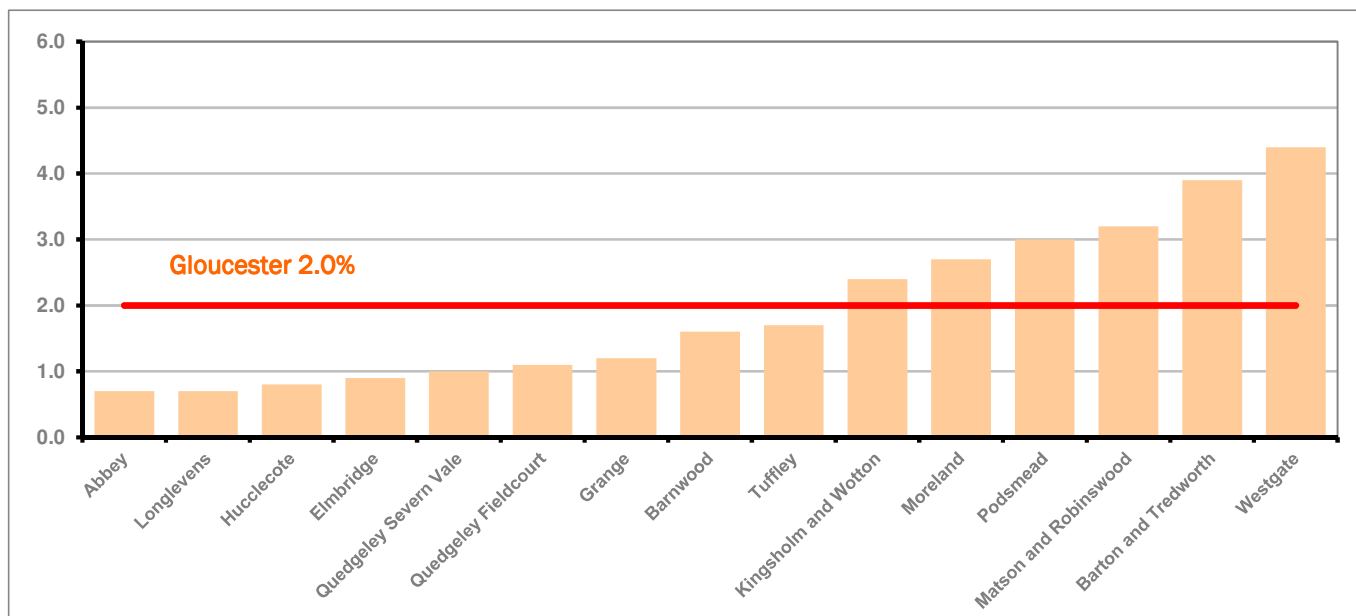
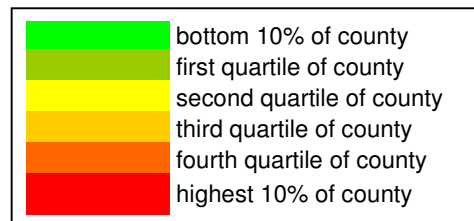


Figure 15 shows the claimant rates for Gloucester City district wards. The red line represents the average claimant rate across the City of 2.0%. Six wards lie above the average.

Table 8: Analysis of Claimant Count at Gloucester City ward level - March 2015

District	Ward	Rate	Rank*
Gloucester	Abbey	0.7	45
Gloucester	Longlevens	0.7	45
Gloucester	Hucclecote	0.8	61
Gloucester	Elmbridge	0.9	77
Gloucester	Quedgeley Severn Vale	1.0	86
Gloucester	Quedgeley Fieldcourt	1.1	95
Gloucester	Grange	1.2	101
Gloucester	Barnwood	1.6	119
Gloucester	Tuffley	1.7	124
Gloucester	Kingsholm and Wotton	2.4	135
Gloucester	Moreland	2.7	136
Gloucester	Podsmead	3.0	138
Gloucester	Matson and Robinswood	3.2	140
Gloucester	Barton and Tredworth	3.9	141
Gloucester	Westgate	4.4	142



\* 1 = "best" and 142 = "worst"

Table 8 shows overall claimant rates for Gloucester City wards and their position relative to all wards in Gloucestershire.

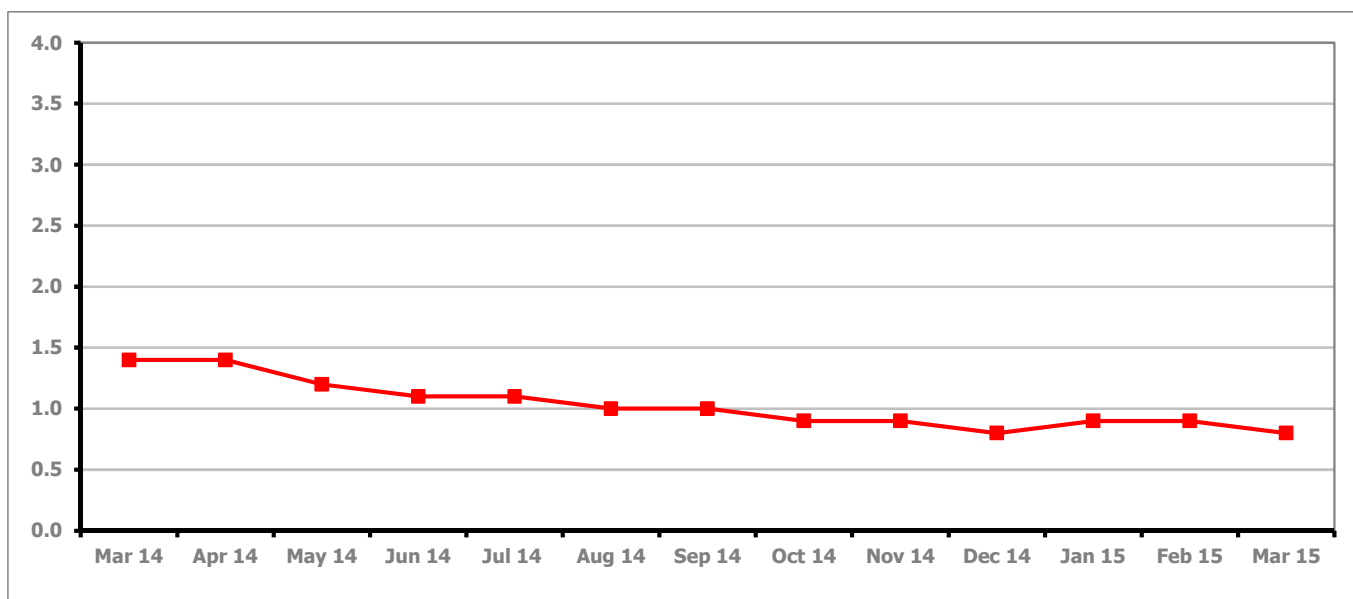
**PART 4: LOCAL AUTHORITY DISTRICT AND WARD ANALYSIS****4.5 Stroud District****Claimant Rate and Claimant Count***Figure 16: Stroud District claimant rate over the last year*

Figure 16 shows the claimant rate for Stroud decreased in March 2015 to 0.8%.

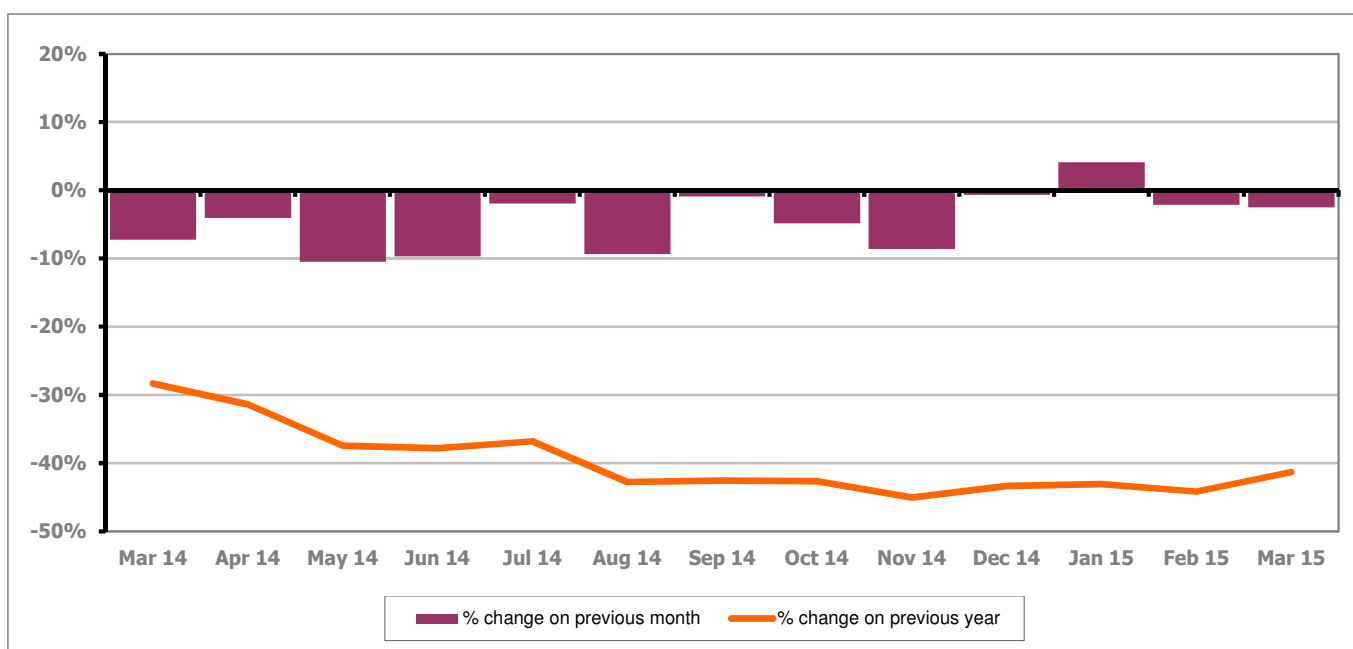
*Figure 17: Stroud District claimants - Month on Month and Year on Year change*

Figure 17 shows the monthly claimant count decreased by 2.5% since February 2015. The change on the previous year has increased between February and March 2015 to -41.3%.

## PART 4: LOCAL AUTHORITY AND DISTRICT ANALYSIS

### 4.5 Stroud District continued...

Figure 18: Claimant rates across Stroud District wards - March 2015

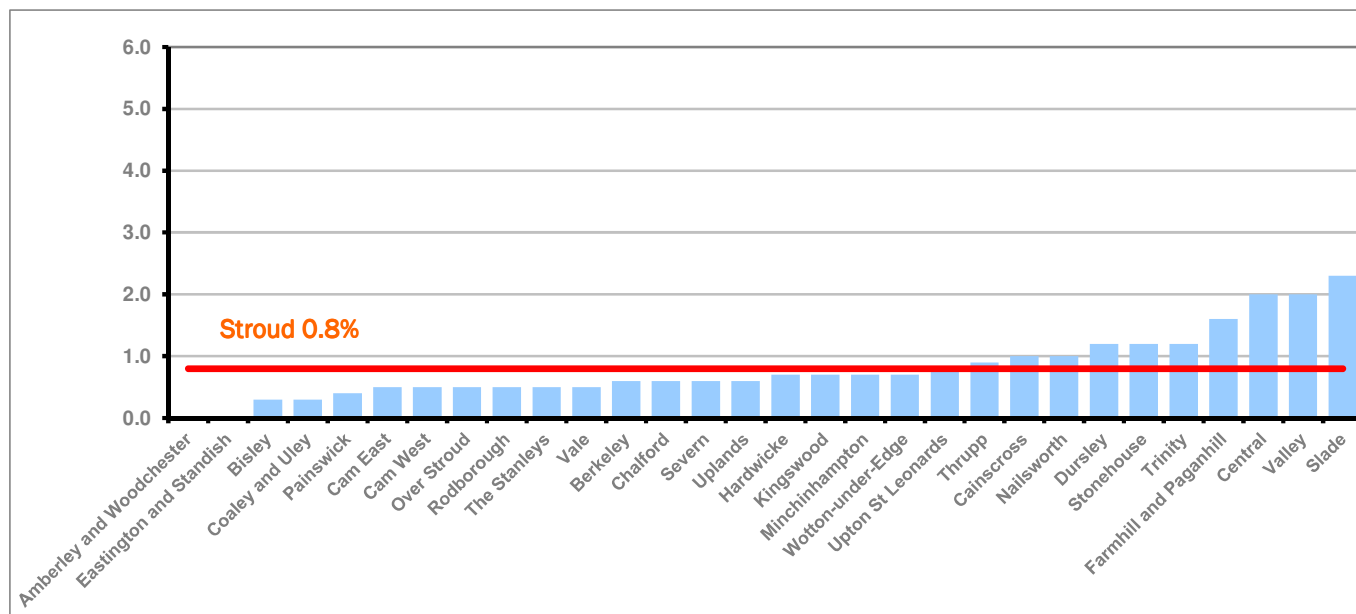
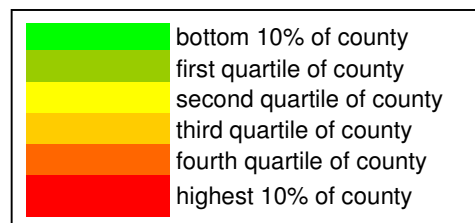


Figure 18 shows the claimant rates in Stroud District wards. The red line represents the average claimant rate across the District of 0.8%. Ten wards are above the average.

Table 9: Analysis of Claimant Count at Stroud District ward level - March 2015

District	Ward	Rate	Rank*
Stroud	Amberley and Woodchester	<0.3	1
Stroud	Eastington and Standish	<0.3	1
Stroud	Bisley	0.3	5
Stroud	Coaley and Uley	0.3	5
Stroud	Painswick	0.4	13
Stroud	Cam East	0.5	19
Stroud	Cam West	0.5	19
Stroud	Over Stroud	0.5	19
Stroud	Rodborough	0.5	19
Stroud	The Stanleys	0.5	19
Stroud	Vale	0.5	19
Stroud	Berkeley	0.6	32
Stroud	Chalford	0.6	32
Stroud	Severn	0.6	32
Stroud	Uplands	0.6	32
Stroud	Hardwicke	0.7	43
Stroud	Kingswood	0.7	43
Stroud	Minchinhampton	0.7	43
Stroud	Wotton-under-Edge	0.7	43
Stroud	Upton St Leonards	0.8	59
Stroud	Thrupp	0.9	75
Stroud	Cainscross	1.0	84
Stroud	Nailsworth	1.0	84
Stroud	Dursley	1.2	99
Stroud	Stonehouse	1.2	99
Stroud	Trinity	1.2	99
Stroud	Farmhill and Paganhill	1.6	117
Stroud	Central	2.0	125
Stroud	Valley	2.0	125
Stroud	Slade	2.3	132



\* 1 = "best" and 142 = "worst"

Table 9 shows overall claimant rates for Stroud District wards and their position relative to all wards in Gloucestershire.

## PART 4: LOCAL AUTHORITY DISTRICT AND WARD ANALYSIS

### 4.6 Tewkesbury District

#### Claimant Rate and Claimant Count

Figure 19: Tewkesbury District claimant rate over the last year

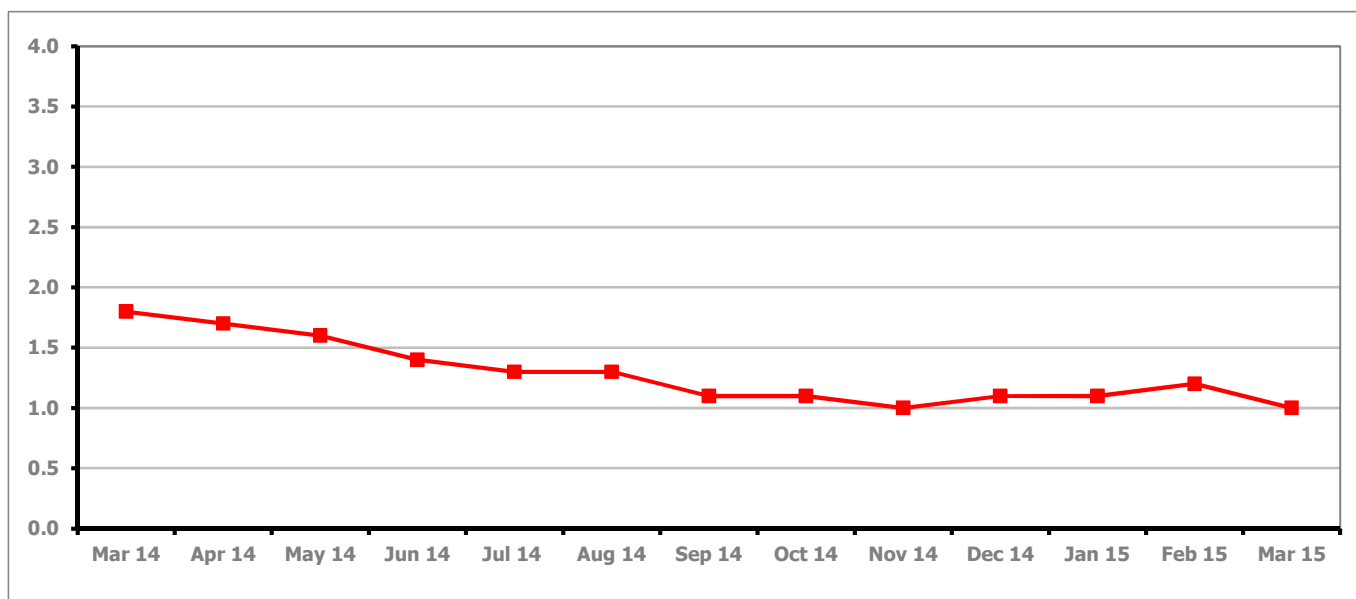


Figure 19 shows the claimant rate for Tewkesbury District decreased in March 2015 to 1.0%

Figure 20: Tewkesbury District claimants - Month on Month and Year on Year change

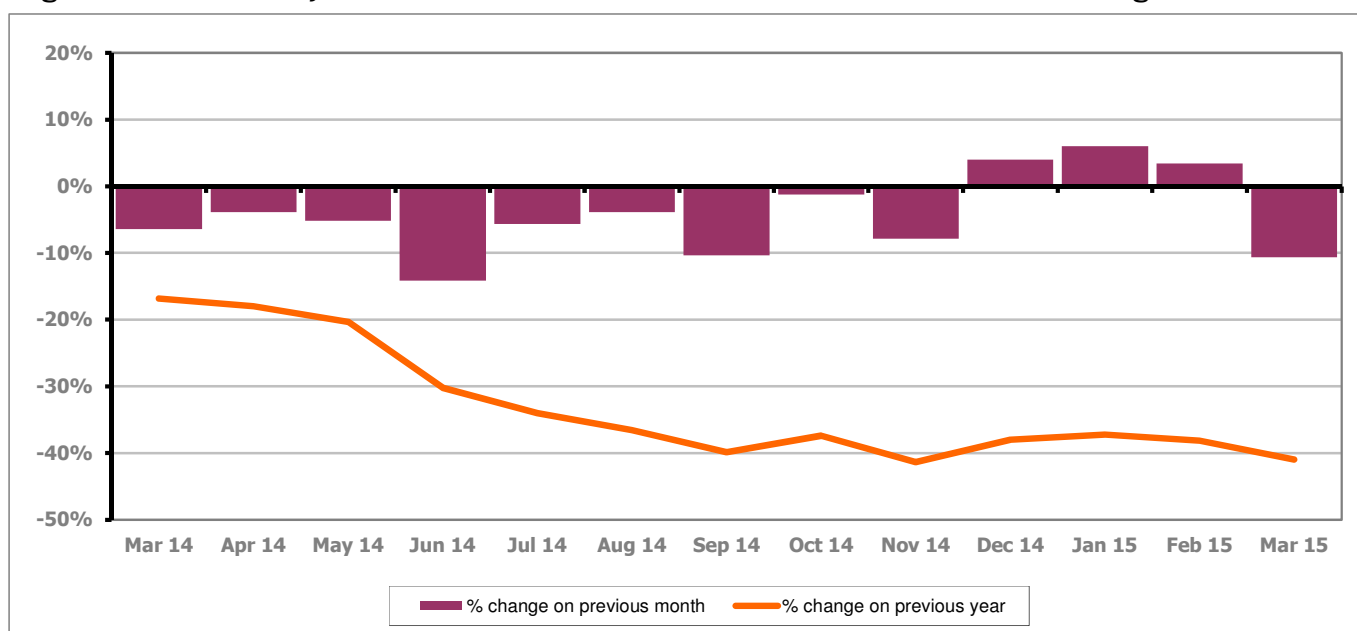


Figure 20 shows that the monthly claimant count decreased by 10.7% since February 2015. The change on the previous year decreased between February and March 2015 to -41.0%.



## PART 4: LOCAL AUTHORITY AND DISTRICT ANALYSIS

### 4.6 Tewkesbury District continued...

Figure 21: Claimant rates across Tewkesbury District wards - March 2015

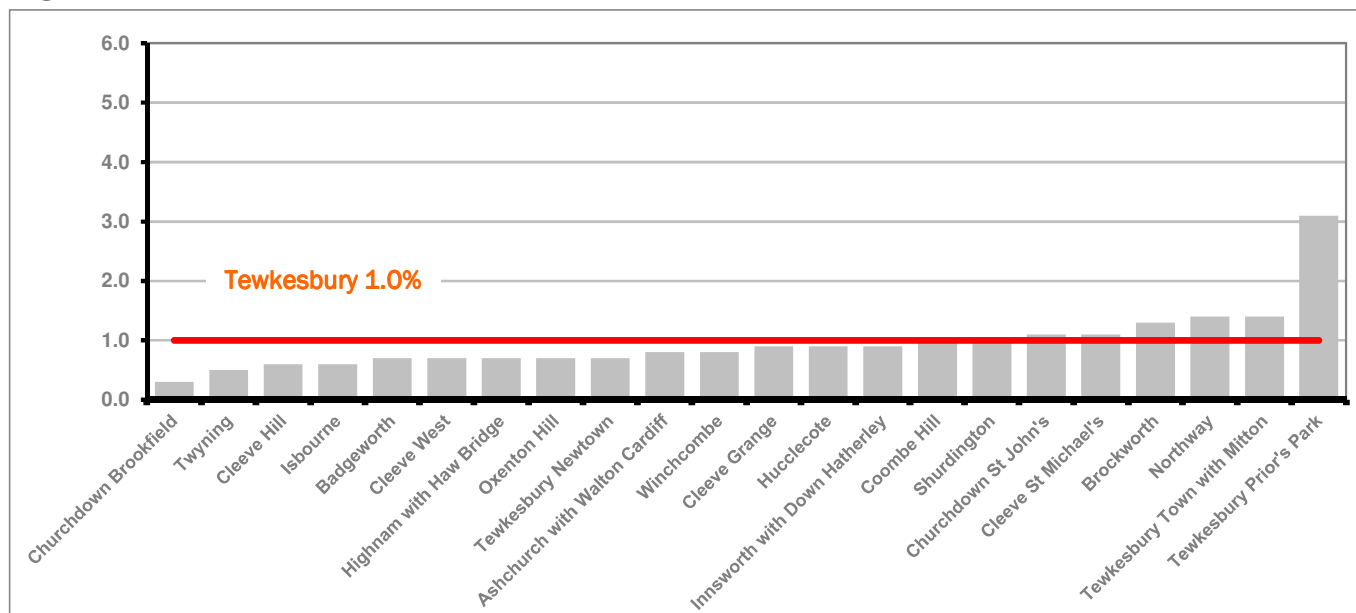
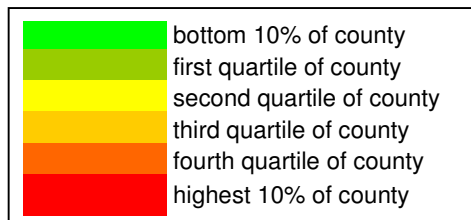


Figure 21 shows the claimant rates in Tewkesbury District wards. The red line represents the average claimant rate across the District of 1.0% and six wards are above the average.

Table 10: Analysis of Claimant Count at Tewkesbury District level - March 2015

District	Ward	Rate	Rank*
Tewkesbury	Churchdown Brookfield	0.3	7
Tewkesbury	Twynning	0.5	21
Tewkesbury	Cleeve Hill	0.6	34
Tewkesbury	Isbourne	0.6	34
Tewkesbury	Badgeworth	0.7	45
Tewkesbury	Cleeve West	0.7	45
Tewkesbury	Highnam with Haw Bridge	0.7	45
Tewkesbury	Oxenton Hill	0.7	45
Tewkesbury	Tewkesbury Newtown	0.7	45
Tewkesbury	Ashchurch with Walton Cardiff	0.8	61
Tewkesbury	Winchcombe	0.8	61
Tewkesbury	Cleeve Grange	0.9	77
Tewkesbury	Hucclecote	0.9	77
Tewkesbury	Innsworth with Down Hatherley	0.9	77
Tewkesbury	Coombe Hill	1.0	86
Tewkesbury	Shurdington	1.0	86
Tewkesbury	Churchdown St John's	1.1	95
Tewkesbury	Cleeve St Michael's	1.1	95
Tewkesbury	Brockworth	1.3	107
Tewkesbury	Northway	1.4	112
Tewkesbury	Tewkesbury Town with Mitton	1.4	112
Tewkesbury	Tewkesbury Prior's Park	3.1	139

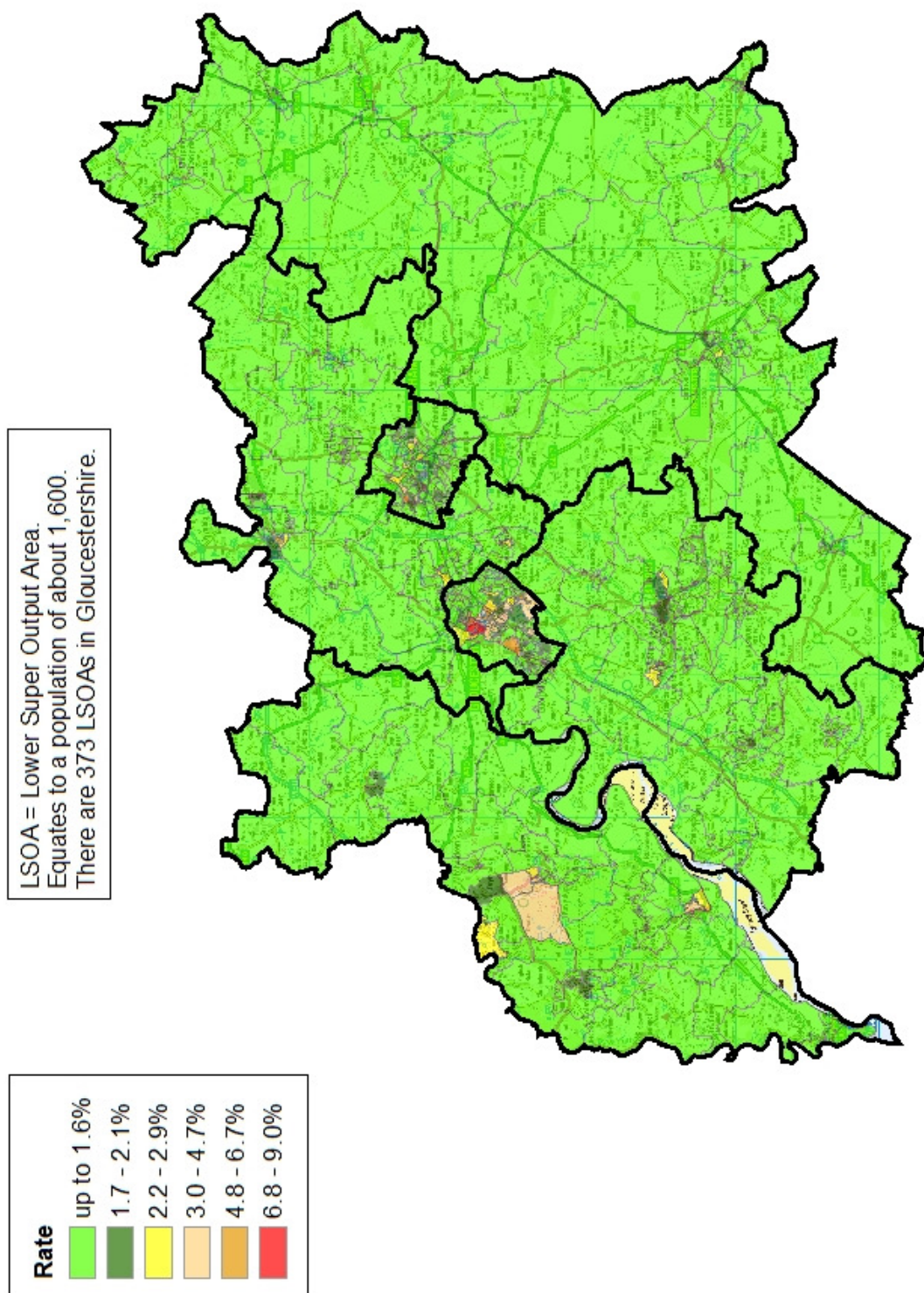


\* 1 = "best" and 142 = "worst"

Table 10 shows overall claimant rates for Tewkesbury District wards and their position relative to all wards in Gloucestershire.

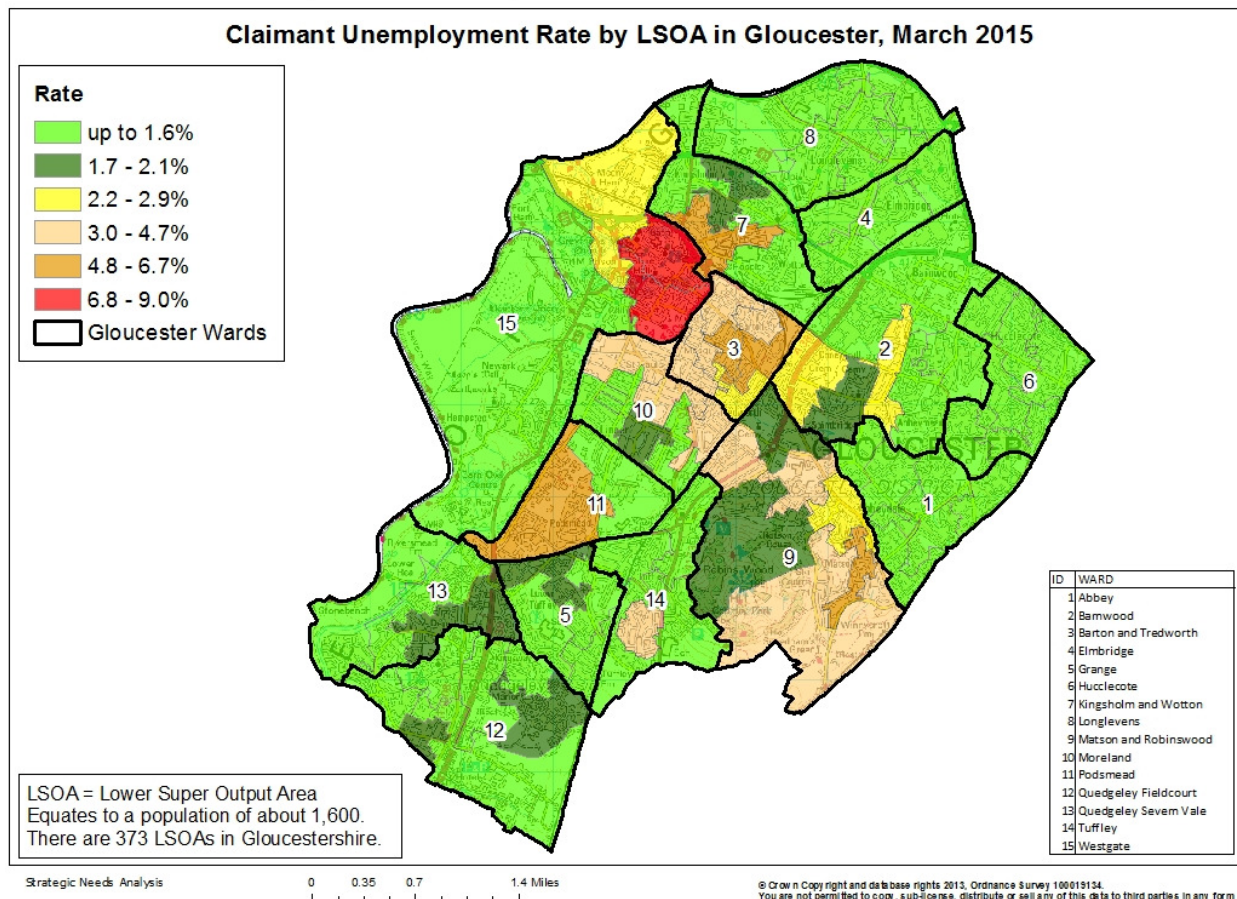
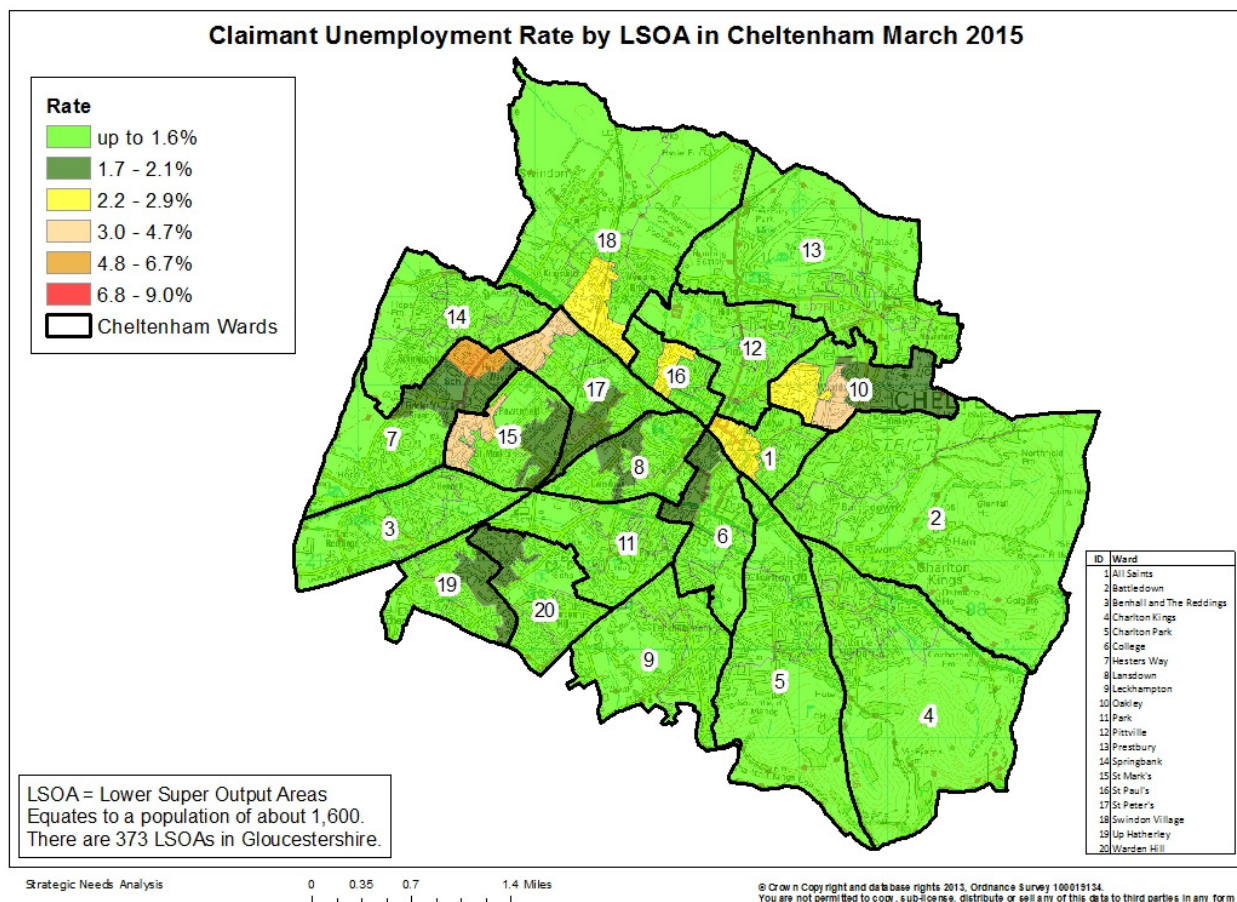
## PART 5: MAP SHOWING DISTRIBUTION OF CLAIMANT RATE ACROSS GLOUCESTERSHIRE

**Claimant Unemployment Rate by LSOA in Gloucestershire, March 2015**





## PART 5: MAP SHOWING DISTRIBUTION OF CLAIMANT RATE ACROSS GLOUCESTERSHIRE



## PART 6: YOUTH UNEMPLOYMENT(18-24 year olds)

### Youth Claimant Rate and Claimant Count

The claimant rate for young people is higher than for the working age (16-64) population with 2.2% of 18-24 year olds in Gloucestershire claiming Job Seekers Allowance (1.2% for working age).

Figure 22: Youth Claimant Rate for Gloucestershire, the South West and UK over the past year

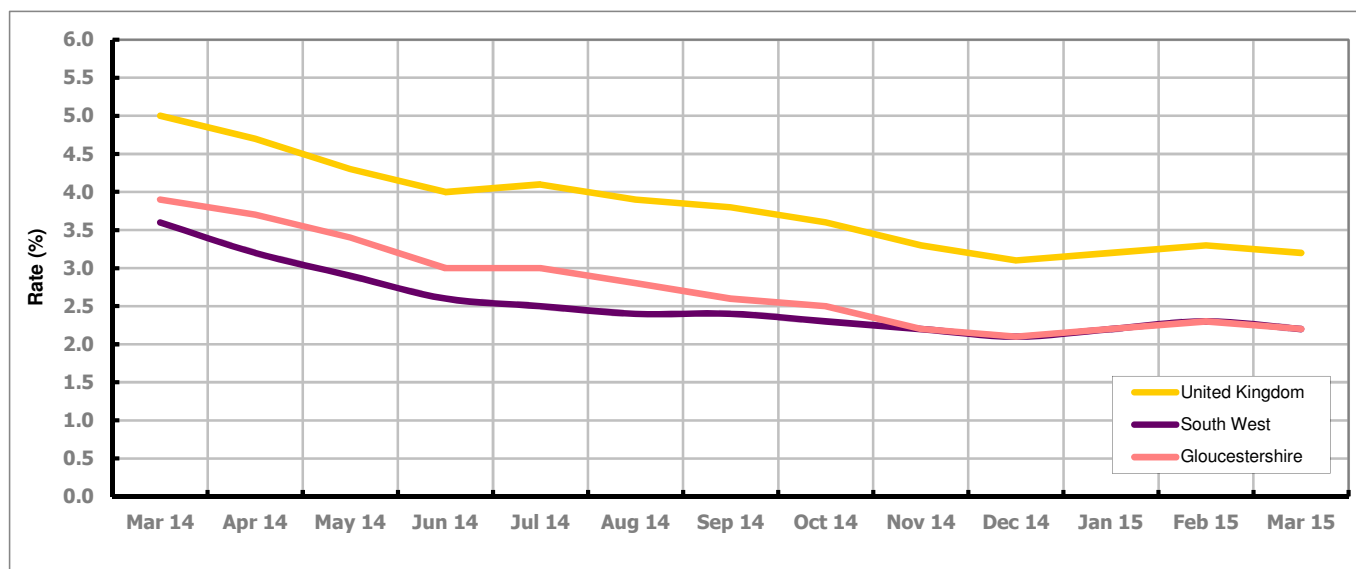


Figure 22 shows Gloucestershire's 18-24 claimant rate is the same as the South West average of 2.2%, but 1.0% lower than the UK average of 3.2%

Figure 23: Claimant Count for Gloucestershire over the past year

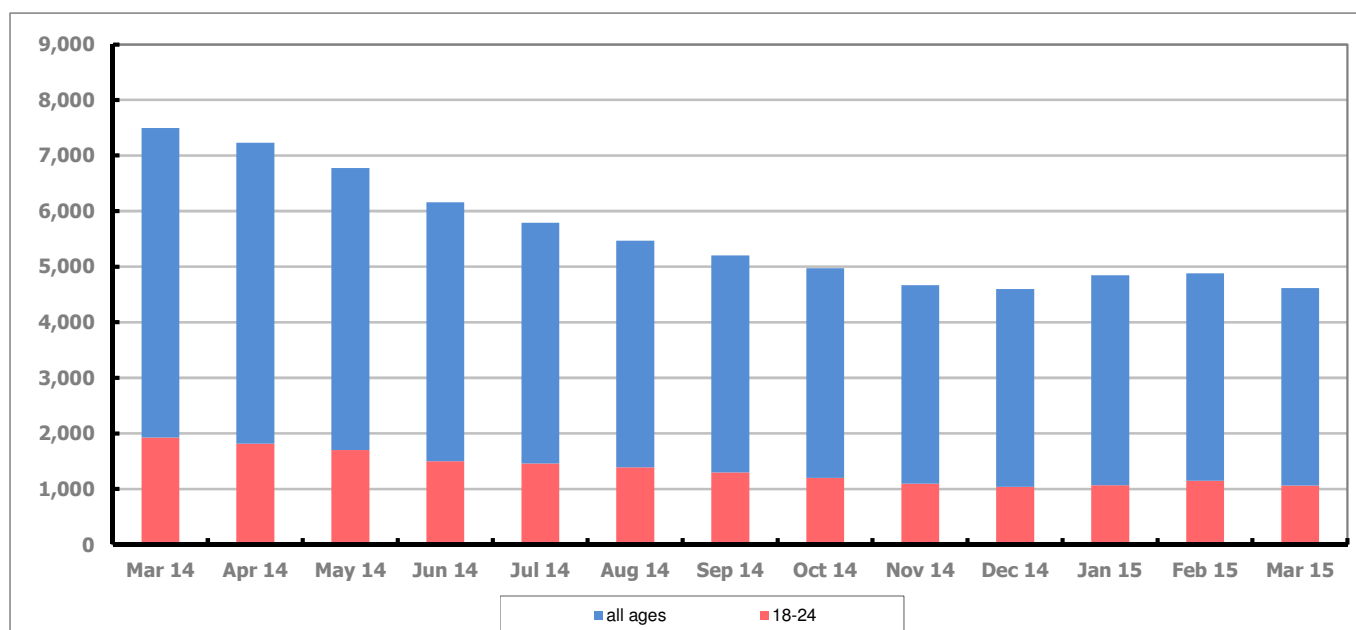


Figure 23 shows that in March 2015, 1,060 people aged 18-24 were claiming Job Seekers Allowance in Gloucestershire, this represents 22.9% of total working age claimants.

## PART 6: YOUTH UNEMPLOYMENT

### Youth Claimant Rate and Claimant Count

Figure 24: Youth Claimant Rate for Gloucestershire, the South West and UK over the past year

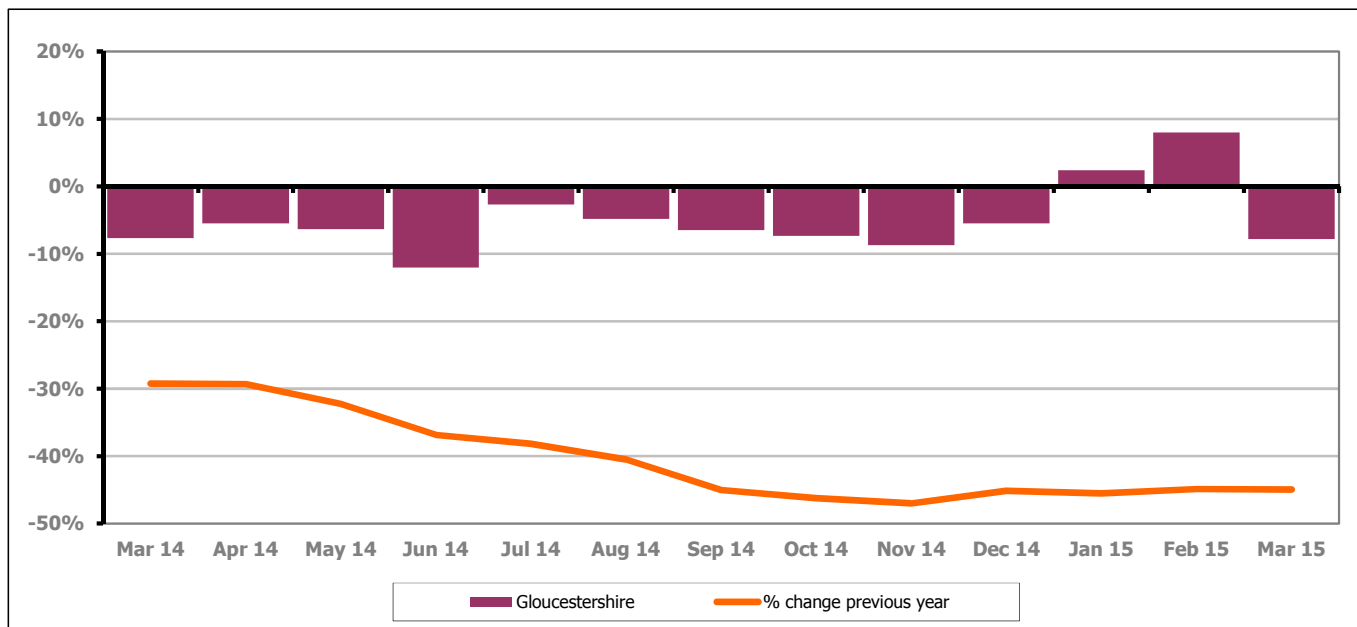


Figure 24 shows the number of young claimants decreased in March 2015 by 7.8% this represented 90 people. Over the last year the number of young claimants fell by 44.9% or 865 people.

### Youth unemployment and duration of claim

Figure 25: Duration of claim in the 18-24 year age group

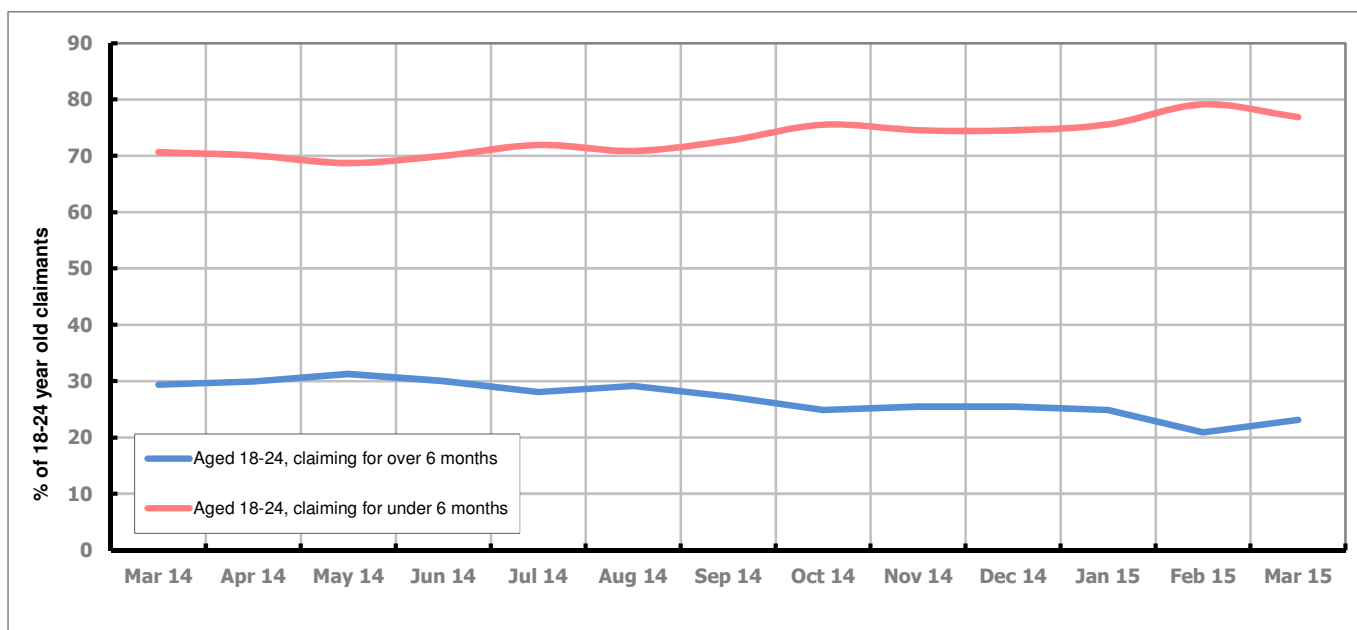


Figure 25 shows the proportion of 18-24 year olds claiming for less than six months decreased from 79.1% of 18-24 year old claimants in February to 76.9% in March 2015. During the same period those claiming for more then six months increased from 20.9% to 23.1%.

## PART 7: YOUNG PEOPLE NOT IN EDUCATION, EMPLOYMENT OR TRAINING (NEET) IN GLOUCESTERSHIRE

Data provided by Gloucestershire Youth Support Team on the situation of young people (16-18) in Gloucestershire who are not in education, employment or formal training.

Gloucestershire Youth Support Team is required to report performance with the 16-18 age range against nationally defined criteria for counting the NEET group. The NEET group includes young people actively seeking education, employment or training as well as those young people who are either not yet ready or who are unable to access these opportunities because of their personal circumstances. The figures quoted below include young people in both of these categories.

### Summary

At the end of March 2015 there were 533 young people aged 16-18 not in education, employment or training in Gloucestershire and this figure translates into an adjusted (\*) 16-18 NEET population of 3.75%. The total number of NEET young people increased by 1 in March 2015 compared to February 2015. Two districts saw a decrease in their NEET figures and four districts saw an increase in their NEET figures.

### Total NEET Group by District Area

#### March 2015 NEET data

	Cheltenham	Cotswold	Forest	Gloucester	Stroud	Tewkesbury	Total
<b>Total NEET</b>	94	69	64	176	75	55	533
<b>Cohort</b>	2528	2013	1976	4380	2760	1653	15310
<b>% NEET</b>	3.72	3.43	3.24	4.02	2.72	4.54	3.75

If you would like to receive any further information on Gloucestershire's NEET strategy then please contact [Ruth.Critchlow@gloucestershire.gov.uk](mailto:Ruth.Critchlow@gloucestershire.gov.uk) or telephone 01452 426900.

(\*) Adjustment includes a proportion of young people aged 16-18 whose outcomes are not-known to Gloucestershire Youth Support Team.