

# Unemployment Bulletin

Issue 200 March 2025

## Contents

<b>Part 1: Summary</b> A summary of unemployment data at district, County, regional and national level	1
<b>Part 2: County</b> Unemployment figures for the County compared to the South West and the rest of the UK	3
<b>Part 3: Districts</b> A comparative break down of unemployment figures by district	4
<b>Part 4: Wards</b> Further breakdown of unemployment figures by ward:	
Cheltenham	6
Cotswolds	8
Forest of Dean	10
Gloucester	12
Stroud	14
Tewkesbury	16
<b>Part 5: Map</b> Distribution of claimant rate across Gloucestershire	18
<b>Part 6: Youth Unemployment</b> Unemployment data for the 18-24 year old age group	20
<b>Part 7: Young People</b> Data about Young People Not in Education, Employment or Training (NEET)	21

### Note on claimant count rates:

From Mar-25 data onwards, ONS have updated local authority, regional and national population estimates, used to calculate rates, to the latest estimates compatible with the 2021 Census. These include the most recent 2023 estimates and the rebased series from 2011 to 2022.

Produced by:

**Data, Analysis & Insights Team**  
Planning, Performance and Insight  
Gloucestershire County Council  
April 2025

The Claimant Count is a measure of the number of people who are unemployed and claiming benefits. From 1996 until the recent introduction of Universal Credit, this was based on the number of people claiming Jobseeker's Allowance. However, since its introduction some unemployment benefit claimants will be claiming Universal Credit instead. **To reflect this change, the Claimant Count has been expanded to include people claiming Jobseeker's Allowance plus those who claim Universal Credit and who are searching for work.**

Since 2016 Gloucestershire has been transitioning to full Universal Credit with the process due to be completed in 2025. This means a broader span of claimants will be required to look for work than under Jobseekers Allowance. As more people are brought within the coverage of Universal Credit, the Claimant Count is set to rise. In addition, in May 2024 the DWP rolled out an increase in the administrative earnings threshold (AET) for full work search conditionality. This means a cohort of claimants who are in work but on an income below the AET will now be required to search for work. This change is likely to affect around 180,000 claimants across the country over around 6 months, increasing the Claimant Count over that time. More information about Universal Credit please see the [ONS website](#).

## INTRODUCTION

The Unemployment Bulletin provides a monthly update on unemployment data for Gloucestershire, the South West region and the United Kingdom. It is produced by the Data, Analysis & Insights Team in the County Council's Planning, Performance and Insight function. The data are sourced from the Office for National Statistics via Nomis ([www.nomis.co.uk](http://www.nomis.co.uk)). All data are rounded to the nearest 5 and may not precisely add to the sum of the number of people claiming JSA, and the number of people claiming Universal Credit required to seek work, due to independent rounding.

## PART 1: SUMMARY

**The claimant rate in Gloucestershire increased to 2.8% in March 2025.** The South West rate remained at 2.9%, whilst the UK rate increased to 4.2%. Gloucestershire's rate was 0.1% lower than the South West average of 2.9%, and 1.4% lower than the UK average of 4.2%.

**The claimant count in Gloucestershire in March 2025 increased by 120 people.** The amount of people claiming in March was 1.1% higher than the number in February. This compares to a 1.4% increase in the South West, and a 1.6% increase in the UK.

## DISTRICTS AT A GLANCE

At a glance unemployment information grouped by district. Includes:

**Claimant count:** Total number of people claiming Job Seekers Allowance and Universal Credit who are not in work in March 2025

**Claimant count change on previous month:** How much larger/smaller March's claimant count is compared to February expressed as a %

**Claimant rate:** The % of working age population claiming Job Seekers Allowance and Universal Credit who are not in work in March 2025

**Highest claiming ward:** The ward with the highest claim count in that district and the rate

### CHELTEMHAM BOROUGH

Claimant count:	2,260
Claimant count change on previous month:	2.5%
Claimant rate:	3.0%
Highest claiming ward(s)	Oakley (6.5%)

### GLOUCESTER CITY

Claimant count:	3,265
Claimant count change on previous month:	1.9%
Claimant rate:	3.8%
Highest claiming ward(s)	Westgate (8.2%)

### COTSWOLD DISTRICT

Claimant count:	1,085
Claimant count change on previous month:	0.5%
Claimant rate:	2.1%
Highest claiming ward(s)	Watermoor (4.3%)

### STROUD DISTRICT

Claimant count:	1,555
Claimant count change on previous month:	0.3%
Claimant rate:	2.1%
Highest claiming ward(s)	Stroud Central (4.0%)

### FOREST OF DEAN

Claimant count:	1,475
Claimant count change on previous month:	0.7%
Claimant rate:	2.8%
Highest claiming ward(s)	Cinderford West (5.6%)

### TEWKESBURY BOROUGH

Claimant count:	1,370
Claimant count change on previous month:	-0.7%
Claimant rate:	2.3%
Highest claiming ward(s)	Tewkesbury South (4.1%)

## PART 2: UK, SW AND GLOUCESTERSHIRE INDICATORS

The unemployment situation in Gloucestershire compared to the South West and the UK.

### Claimant Rate

Figure 1: Claimant Rate for Gloucestershire, the South West and UK over the past year

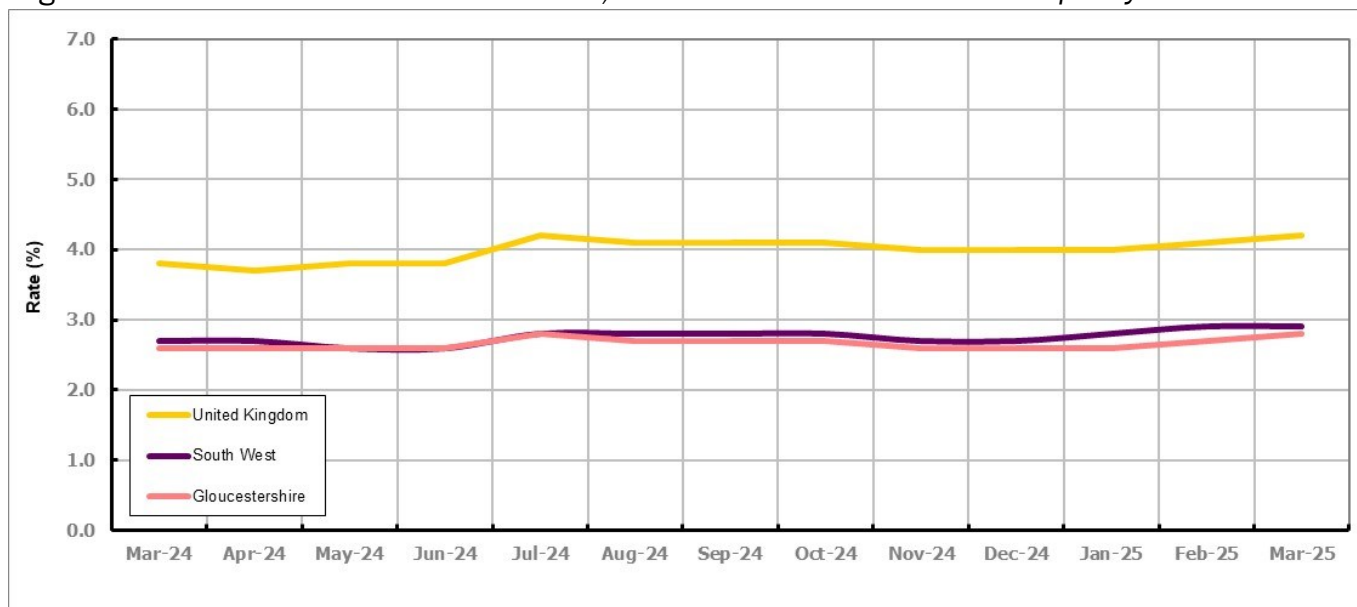


Figure 1 shows the claimant rate for Gloucestershire at 2.8% in March 2025. The Gloucestershire rate has been lower than the South West average since July 2024. On average, it has been approximately 1.3% lower than the UK average since the same month of the previous year.

### Claimant Count

Table 1: Analysis of UK, South West and Gloucestershire Claimant Counts

Area	Claimant Count in March 2025	% change on February 2025	Consecutive months increasing
UK	1,778,055	1.6%	1
South West	102,510	1.4%	2
Gloucestershire	11,010	1.1%	2

Table 1 shows that in March 2025, the number of claimants in Gloucestershire was 1.1% higher than the number in February 2025.

## PART 3: LOCAL AUTHORITY DISTRICT ANALYSIS

### Claimant Rate and Claimant Count

Figure 2: Claimant Rate (%) across Gloucestershire - March 2025

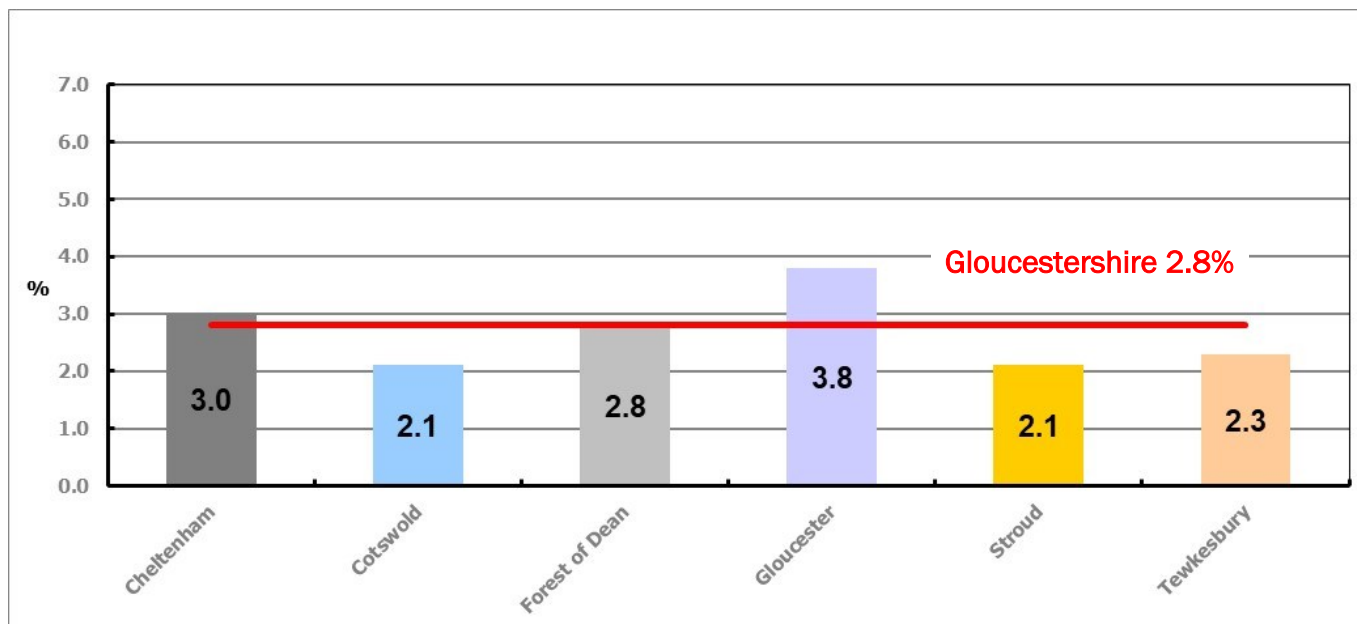


Figure 2 shows the claimant rate for March 2025 in Gloucestershire. Between February and March 2025 the rate remained the same in all districts, except Cheltenham and Gloucester which saw an increase, and Tewkesbury which saw a decrease.

Table 2: Analysis of Gloucestershire and District Claimant Counts

Total	Mar 25 Number	Mar 25 Rate	Feb 25 Number	Feb 25 Rate	Monthly change	% monthly change	Monthly change of rate
<b>Gloucestershire</b>	11,010	2.8	10,890	2.7	120	1.1%	0.1
Cheltenham	2,260	3.0	2,205	2.9	55	2.5%	0.1
Cotswold	1,085	2.1	1,080	2.1	5	0.5%	0.0
Forest of Dean	1,475	2.8	1,465	2.8	10	0.7%	0.0
Gloucester	3,265	3.8	3,205	3.7	60	1.9%	0.1
Stroud	1,555	2.1	1,550	2.1	5	0.3%	0.0
Tewkesbury	1,370	2.3	1,380	2.4	-10	-0.7%	-0.1

Table 2 shows the change in the claimant count in March 2025 compared to February. All districts saw an increase in the number of claimants, except Tewkesbury which saw a decrease.

Table 3: Analysis of Male Gloucestershire and District Claimant Counts

Male	Mar 25 Number	Mar 25 Rate	Feb 25 Number	Feb 25 Rate	Monthly change	% monthly change	Monthly change of rate
<b>Gloucestershire</b>	5,995	3.0	5,890	3.0	105	1.8%	0.0
Cheltenham	1,255	3.3	1,215	3.2	40	3.3%	0.1
Cotswold	540	2.1	535	2.1	5	0.9%	0.0
Forest of Dean	780	3.0	790	3.0	-10	-1.3%	0.0
Gloucester	1,910	4.4	1,860	4.3	50	2.7%	0.1
Stroud	790	2.2	770	2.1	20	2.6%	0.1
Tewkesbury	725	2.6	715	2.5	10	1.4%	0.1

Table 3 shows the change in the male claimant count in March 2025 compared to February. All districts saw an increase in the number of claimants, except Forest of Dean which saw a decrease.

Table 4: Analysis of Female Gloucestershire and District Claimant Counts

Female	Mar 25 Number	Mar 25 Rate	Feb 25 Number	Feb 25 Rate	Monthly change	% monthly change	Monthly change of rate
<b>Gloucestershire</b>	5,015	2.5	5,000	2.5	15	0.3%	0.0
Cheltenham	1,010	2.7	990	2.6	20	2.0%	0.1
Cotswold	545	2.0	545	2.0	0	0.0%	0.0
Forest of Dean	700	2.6	680	2.6	20	2.9%	0.0
Gloucester	1,355	3.2	1,345	3.1	10	0.7%	0.1
Stroud	765	2.0	780	2.1	-15	-1.9%	-0.1
Tewkesbury	645	2.1	660	2.2	-15	-2.3%	-0.1

Table 4 shows the change in the female claimant count in March 2025 compared to February. All districts saw an increase in the number of claimants, except Stroud and Tewkesbury which saw a decrease, and Cotswold which remained the same.

## PART 4: LOCAL AUTHORITY DISTRICT AND WARD ANALYSIS

This section covers the six districts and a comparison of their constituent wards.

### 4.1 Cheltenham Borough

#### Claimant Rate and Claimant Count

Figure 3: Cheltenham Borough claimant rate over the last year

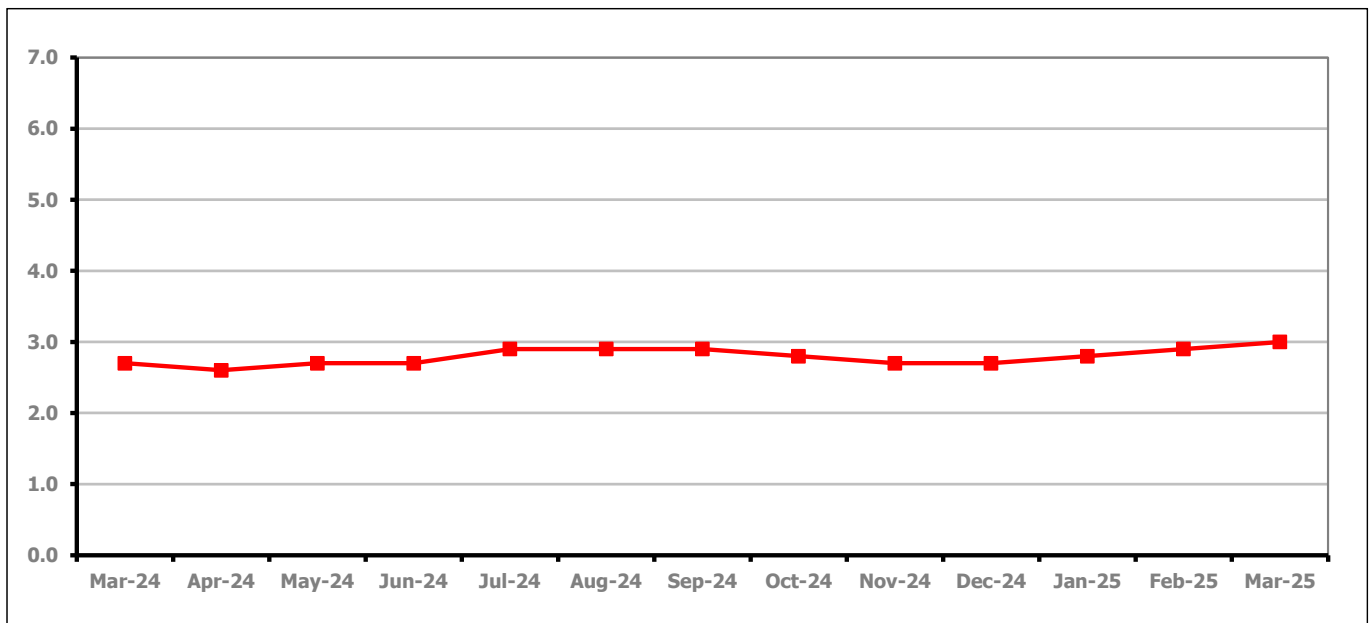


Figure 3 shows the claimant rate in Cheltenham increased to 3.0% in March 2025.

Figure 4: Claimant rates across Cheltenham Borough wards - March 2025

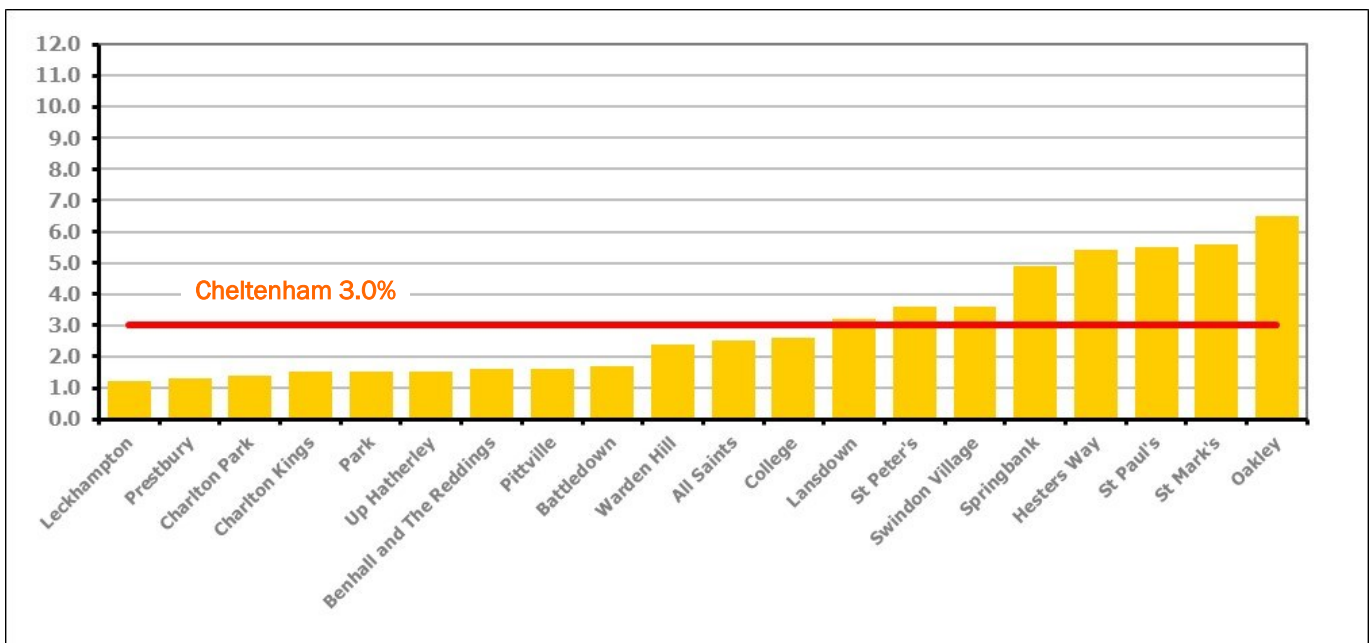


Figure 4 shows the claimant rates for Cheltenham Borough wards. The red line represents the average claimant rate across the Borough of 3.0%. Eight wards lie above the average.

## PART 4: LOCAL AUTHORITY DISTRICT AND WARD ANALYSIS

### 4.1 Cheltenham Borough continued...

Table 5: Analysis of Claimant Count at Cheltenham Borough ward level - March 2025

District	Ward	Rate	Rank*
Cheltenham	Leckhampton	1.2	5
Cheltenham	Prestbury	1.3	8
Cheltenham	Charlton Park	1.4	10
Cheltenham	Charlton Kings	1.5	14
Cheltenham	Park	1.5	14
Cheltenham	Up Hatherley	1.5	14
Cheltenham	Benhall and The Reddings	1.6	25
Cheltenham	Pittville	1.6	25
Cheltenham	Battledown	1.7	31
Cheltenham	Warden Hill	2.4	76
Cheltenham	All Saints	2.5	82
Cheltenham	College	2.6	89
Cheltenham	Lansdown	3.2	109
Cheltenham	St Peter's	3.6	115
Cheltenham	Swindon Village	3.6	115
Cheltenham	Springbank	4.9	127
Cheltenham	Hesters Way	5.4	130
Cheltenham	St Paul's	5.5	131
Cheltenham	St Mark's	5.6	132
Cheltenham	Oakley	6.5	136

	lowest 10% of county
	first quartile of county
	second quartile of county
	third quartile of county
	fourth quartile of county
	highest 10% of county

\* 1 = "best" and 138 = "worst"

Table 5 shows overall claimant rates for Cheltenham Borough wards and their position relative to all wards in Gloucestershire.

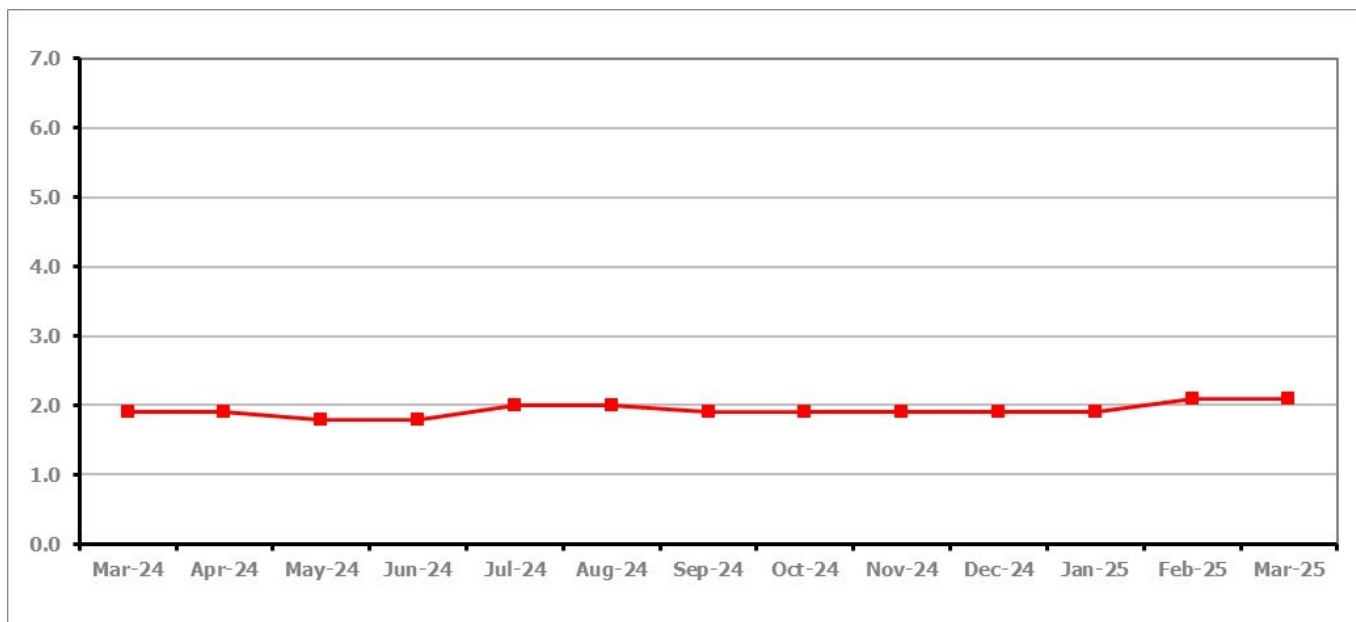
**PART 4: LOCAL AUTHORITY DISTRICT AND WARD ANALYSIS****4.2 Cotswold District****Claimant Rate and Claimant Count***Figure 5: Cotswold District claimant rate over the last year*

Figure 5 shows the claimant rate in Cotswold District remained at 2.1% in March 2025.

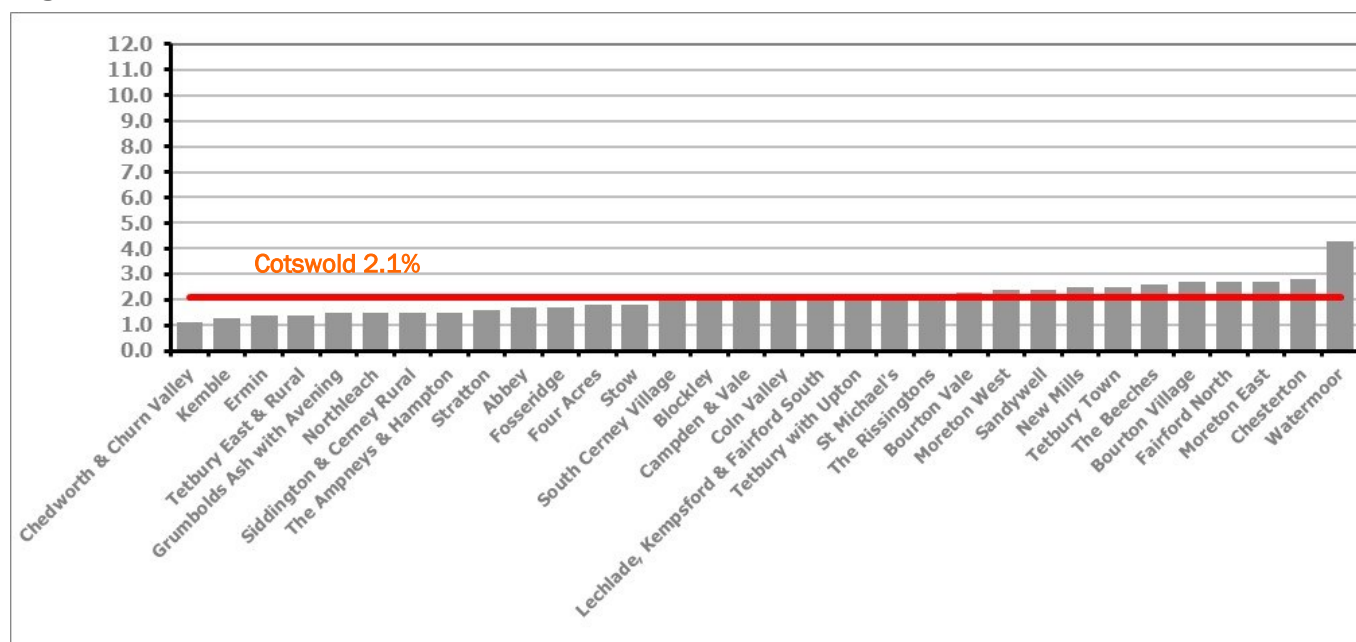
*Figure 6: Claimant rates across Cotswold District wards – March 2025*

Figure 6 shows the claimant rates for Cotswold District wards. The red line represents the average claimant rate across the District of 2.1%. Thirteen wards lie above the average.



## PART 4: LOCAL AUTHORITY DISTRICT AND WARD ANALYSIS

### 4.2 Cotswold District continued...

Table 6: Analysis of Claimant Count at Cotswold District ward level - March 2025

District	Ward	Rate	Rank*
Cotswold	Chedworth & Churn Valley	1.1	3
Cotswold	Kemble	1.3	8
Cotswold	Ermin	1.4	10
Cotswold	Tetbury East & Rural	1.4	10
Cotswold	Grumbolds Ash with Avening	1.5	14
Cotswold	Northleach	1.5	14
Cotswold	Siddington & Cerney Rural	1.5	14
Cotswold	The Ampneys & Hampton	1.5	14
Cotswold	Stratton	1.6	25
Cotswold	Abbey	1.7	31
Cotswold	Fosseridge	1.7	31
Cotswold	Four Acres	1.8	39
Cotswold	Stow	1.8	39
Cotswold	South Cerney Village	2.0	52
Cotswold	Blockley	2.1	57
Cotswold	Campden & Vale	2.1	57
Cotswold	Coln Valley	2.1	57
Cotswold	Lechlade, Kempsford & Fairford South	2.1	57
Cotswold	Tetbury with Upton	2.1	57
Cotswold	St Michael's	2.2	65
Cotswold	The Rissingtons	2.2	65
Cotswold	Bourton Vale	2.3	71
Cotswold	Moreton West	2.4	76
Cotswold	Sandywell	2.4	76
Cotswold	New Mills	2.5	82
Cotswold	Tetbury Town	2.5	82
Cotswold	The Beeches	2.6	89
Cotswold	Bourton Village	2.7	94
Cotswold	Fairford North	2.7	94
Cotswold	Moreton East	2.7	94
Cotswold	Chesterton	2.8	102
Cotswold	Watermoor	4.3	124

	lowest 10% of county
	first quartile of county
	second quartile of county
	third quartile of county
	fourth quartile of county
	highest 10% of county

\* 1 = "best" and 138 = "worst"

Table 6 shows overall claimant rates for Cotswold District wards and their position relative to all wards in Gloucestershire.

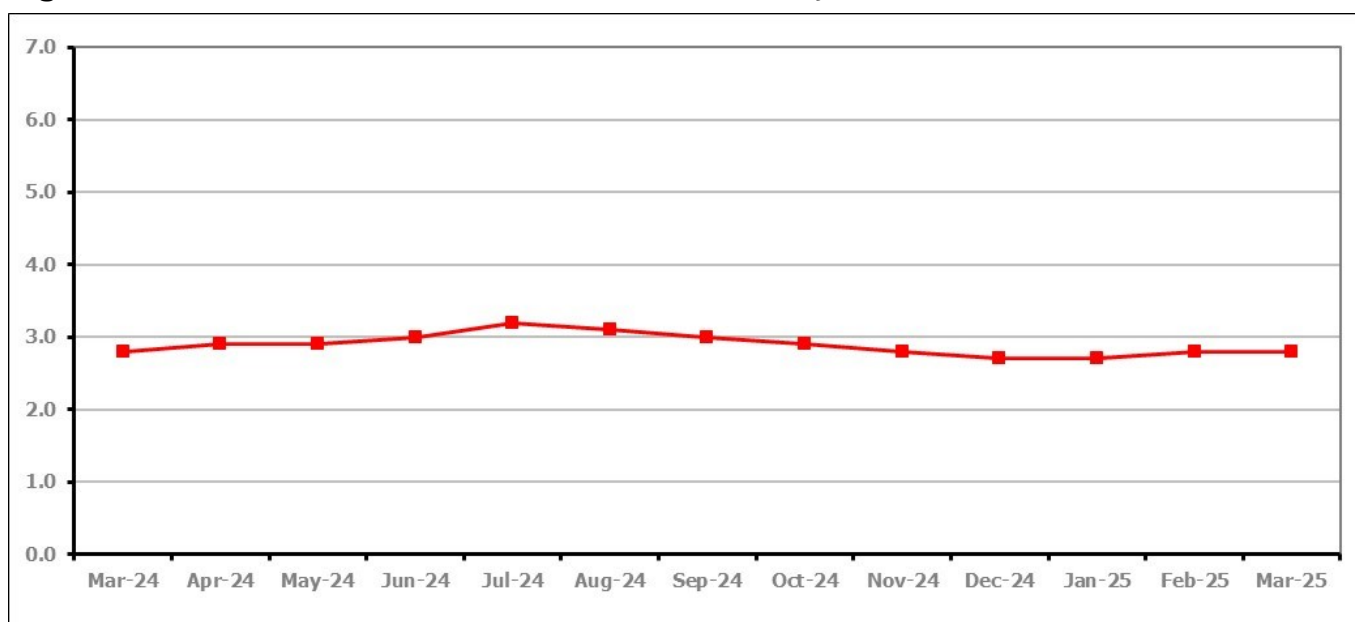
**PART 4: LOCAL AUTHORITY DISTRICT AND WARD ANALYSIS****4.3 Forest of Dean District****Claimant Rate and Claimant Count***Figure 7: Forest of Dean District claimant rate over the last year*

Figure 7 shows the claimant rate in the Forest of Dean remained at 2.8% in March 2025.

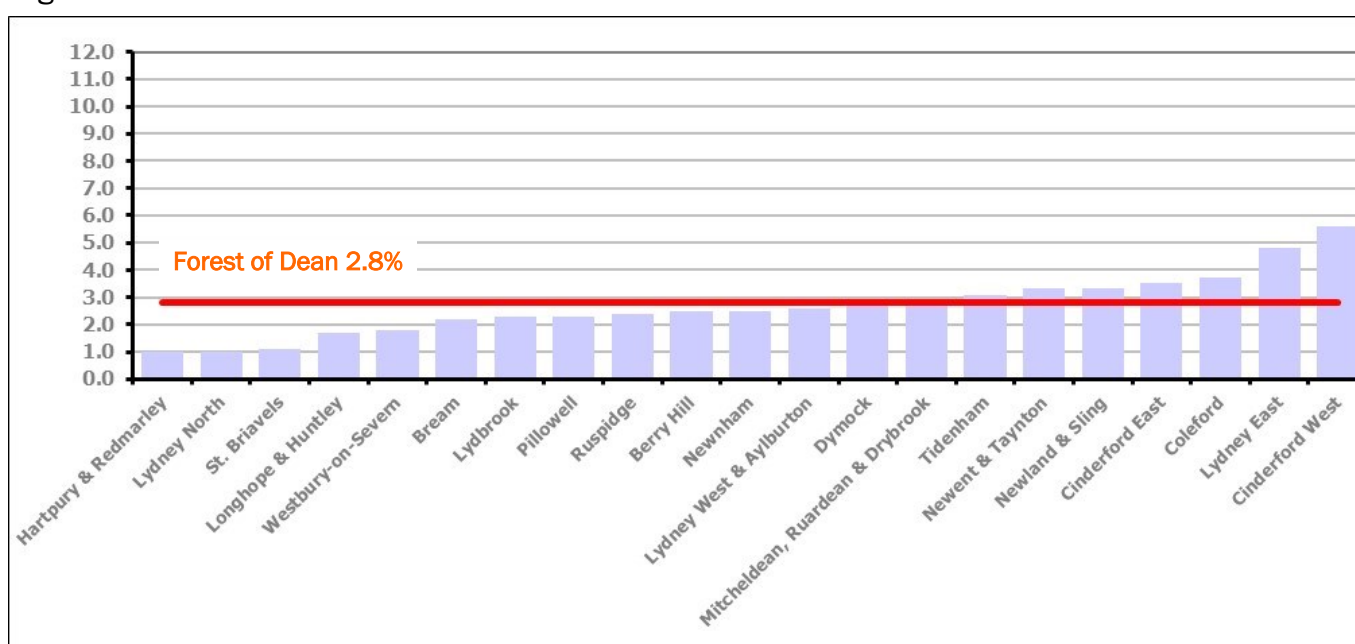
*Figure 8: Claimant rates across Forest of Dean District wards – March 2025*

Figure 8 shows the claimant rates for the Forest of Dean District wards. The red line represents the average claimant rate across the District of 2.8%. Seven wards lie above the average.

**PART 4: LOCAL AUTHORITY DISTRICT AND WARD ANALYSIS****4.3 Forest of Dean District continued...***Table 7: Analysis of Claimant Count at Forest of Dean District ward level - March 2025*

District	Ward	Rate	Rank*
Forest	Hartpury & Redmarley	1.0	1
Forest	Lydney North	1.0	1
Forest	St. Briavels	1.1	3
Forest	Longhope & Huntley	1.7	31
Forest	Westbury-on-Severn	1.8	39
Forest	Bream	2.2	65
Forest	Lydbrook	2.3	71
Forest	Pillowell	2.3	71
Forest	Ruspidge	2.4	76
Forest	Berry Hill	2.5	82
Forest	Newnham	2.5	82
Forest	Lydney West & Aylburton	2.6	89
Forest	Dymock	2.7	94
Forest	Mitcheldean, Ruardean & Drybrook	2.8	102
Forest	Tidenham	3.1	106
Forest	Newent & Taynton	3.3	110
Forest	Newland & Sling	3.3	110
Forest	Cinderford East	3.5	114
Forest	Coleford	3.7	118
Forest	Lydney East	4.8	125
Forest	Cinderford West	5.6	132

	lowest 10% of county
	first quartile of county
	second quartile of county
	third quartile of county
	fourth quartile of county
	highest 10% of county

\* 1 = "best" and 138 = "worst"

Table 7 shows overall claimant rates for the Forest of Dean District wards and their position relative to all wards in Gloucestershire.

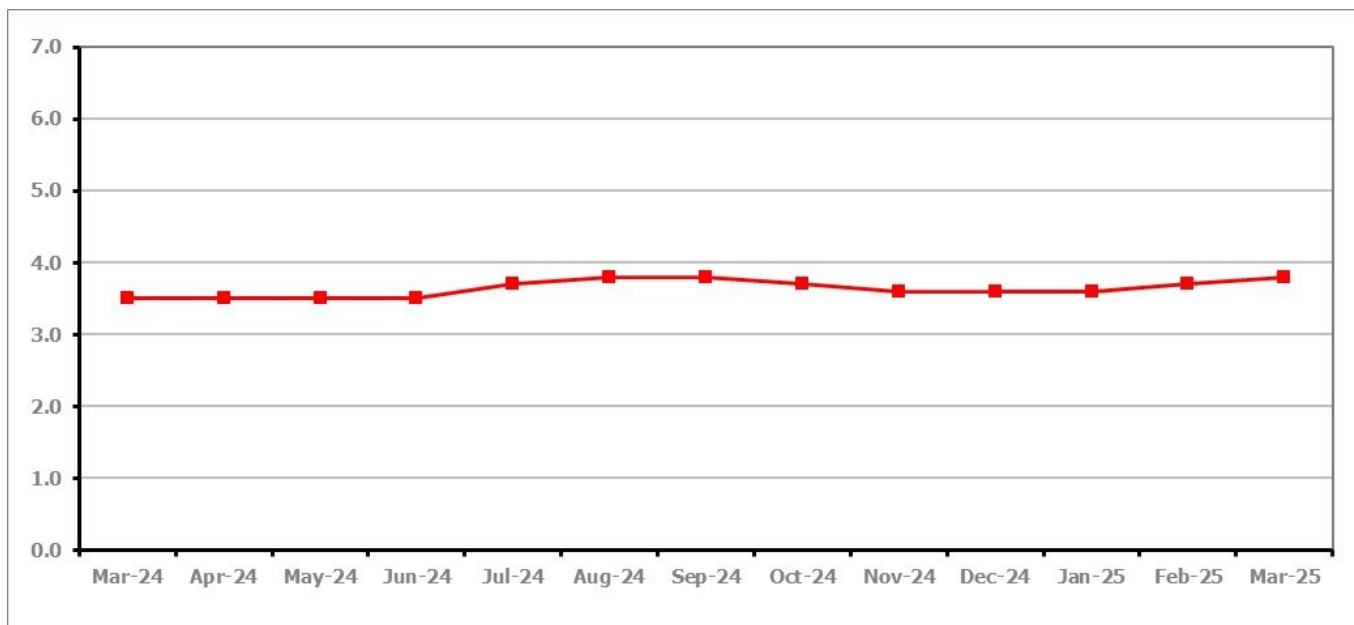
**PART 4: LOCAL AUTHORITY DISTRICT AND WARD ANALYSIS****4.4 Gloucester City****Claimant Rate and Claimant Count***Figure 9: Gloucester City claimant rate over the last year*

Figure 9 shows the claimant rate for Gloucester City increased to 3.8% in March 2025.

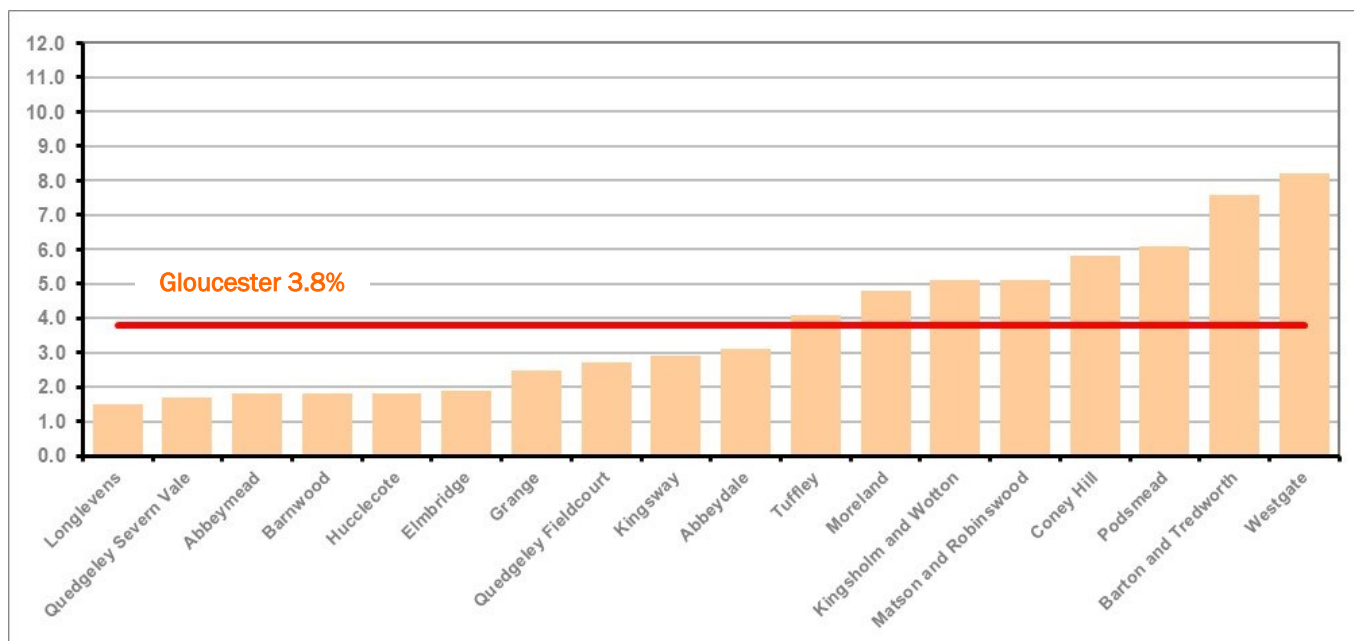
*Figure 10: Claimant rates across Gloucester City wards - March 2025*

Figure 10 shows the claimant rates for Gloucester City district wards. The red line represents the average claimant rate across the City of 3.8%. Eight wards lie above the average.

## PART 4: LOCAL AUTHORITY DISTRICT AND WARD ANALYSIS

### 4.4 Gloucester City continued...

Table 8: Analysis of Claimant Count at Gloucester City ward level - March 2025

District	Ward	Rate	Rank*
Gloucester	Longlevens	1.5	14
Gloucester	Quedgeley Severn Vale	1.7	31
Gloucester	Abbeymead	1.8	39
Gloucester	Barnwood	1.8	39
Gloucester	Hucclecote	1.8	39
Gloucester	Elmbridge	1.9	45
Gloucester	Grange	2.5	82
Gloucester	Quedgeley Fieldcourt	2.7	94
Gloucester	Kingsway	2.9	105
Gloucester	Abbeydale	3.1	106
Gloucester	Tuffley	4.1	122
Gloucester	Moreland	4.8	125
Gloucester	Kingsholm and Wotton	5.1	128
Gloucester	Matson and Robinswood	5.1	128
Gloucester	Coney Hill	5.8	134
Gloucester	Podsmead	6.1	135
Gloucester	Barton and Tredworth	7.6	137
Gloucester	Westgate	8.2	138

	lowest 10% of county
	first quartile of county
	second quartile of county
	third quartile of county
	fourth quartile of county
	highest 10% of county

\* 1 = "best" and 138 = "worst"

Table 8 shows overall claimant rates for Gloucester City wards and their position relative to all wards in Gloucestershire.

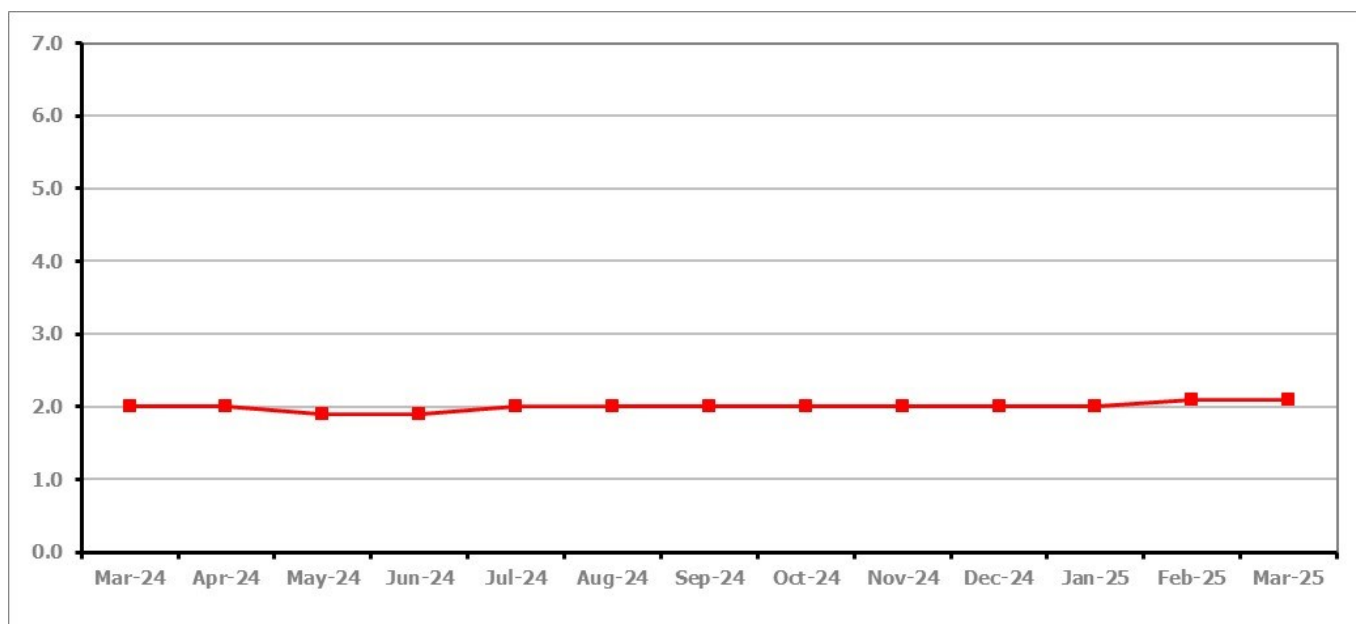
**PART 4: LOCAL AUTHORITY DISTRICT AND WARD ANALYSIS****4.5 Stroud District****Claimant Rate and Claimant Count***Figure 11: Stroud District claimant rate over the last year*

Figure 11 shows the claimant rate for Stroud remained at 2.1% in March 2025.

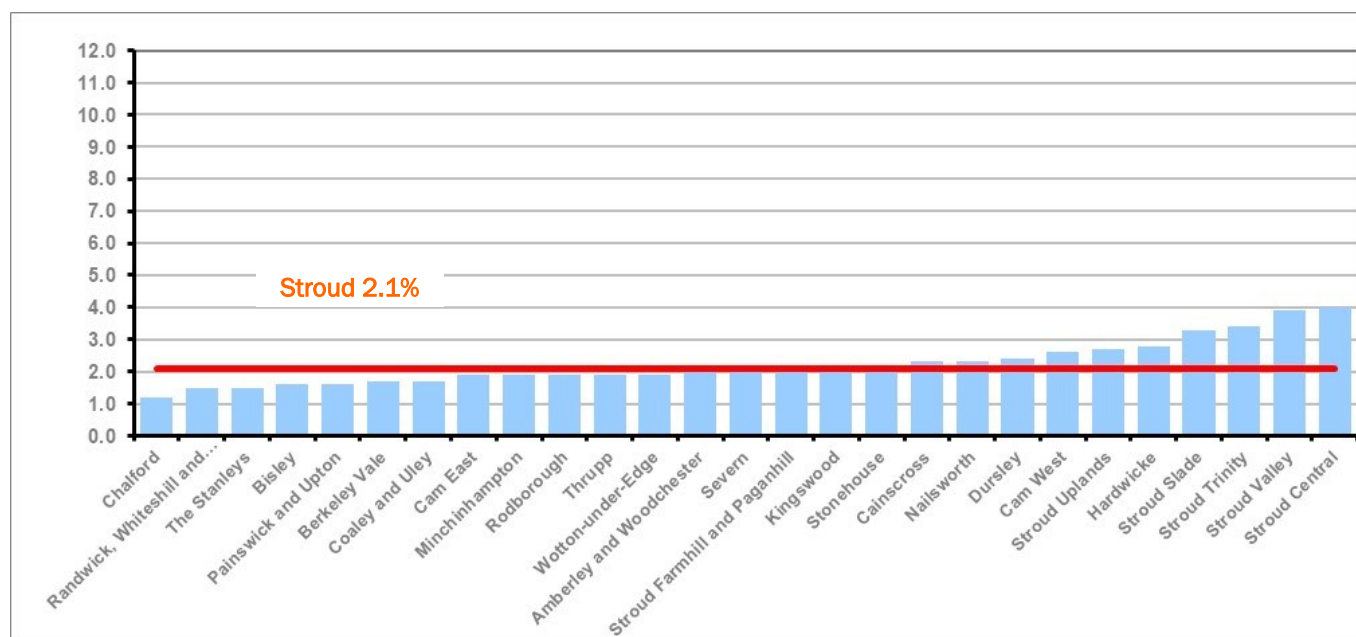
*Figure 12: Claimant rates across Stroud District wards - March 2025*

Figure 12 shows the claimant rates in Stroud District wards. The red line represents the average claimant rate across the District of 2.1%. Eleven wards are above the average.

## PART 4: LOCAL AUTHORITY AND DISTRICT ANALYSIS

### 4.5 Stroud District continued...

Table 9: Analysis of Claimant Count at Stroud District ward level - March 2025

District	Ward	Rate	Rank*
Stroud	Chalford	1.2	5
Stroud	Randwick, Whiteshill and Ruscombe	1.5	14
Stroud	The Stanleys	1.5	14
Stroud	Bisley	1.6	25
Stroud	Painswick and Upton	1.6	25
Stroud	Berkeley Vale	1.7	31
Stroud	Coaley and Uley	1.7	31
Stroud	Cam East	1.9	45
Stroud	Minchinhampton	1.9	45
Stroud	Rodborough	1.9	45
Stroud	Thrupp	1.9	45
Stroud	Wotton-under-Edge	1.9	45
Stroud	Amberley and Woodchester	2.0	52
Stroud	Severn	2.0	52
Stroud	Stroud Farmhill and Paganhill	2.0	52
Stroud	Kingswood	2.1	57
Stroud	Stonehouse	2.2	65
Stroud	Cainscross	2.3	71
Stroud	Nailsworth	2.3	71
Stroud	Dursley	2.4	76
Stroud	Cam West	2.6	89
Stroud	Stroud Uplands	2.7	94
Stroud	Hardwicke	2.8	102
Stroud	Stroud Slade	3.3	110
Stroud	Stroud Trinity	3.4	113
Stroud	Stroud Valley	3.9	119
Stroud	Stroud Central	4.0	121

	lowest 10% of county
	first quartile of county
	second quartile of county
	third quartile of county
	fourth quartile of county
	highest 10% of county

\* 1 = "best" and 138 = "worst"

Table 9 shows overall claimant rates for Stroud District wards and their position relative to all wards in Gloucestershire.

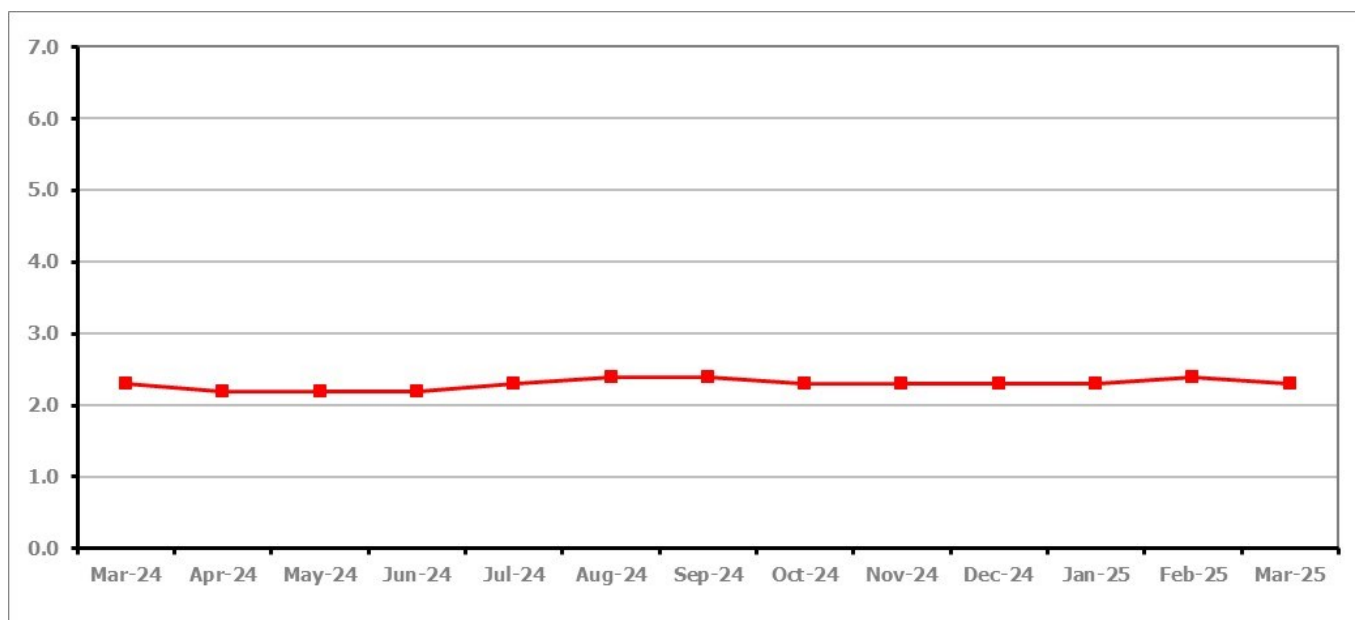
**PART 4: LOCAL AUTHORITY DISTRICT AND WARD ANALYSIS****4.6 Tewkesbury Borough****Claimant Rate and Claimant Count***Figure 13: Tewkesbury Borough claimant rate over the last year*

Figure 13 shows the claimant rate for Tewkesbury Borough decreased to 2.3% in March 2025.

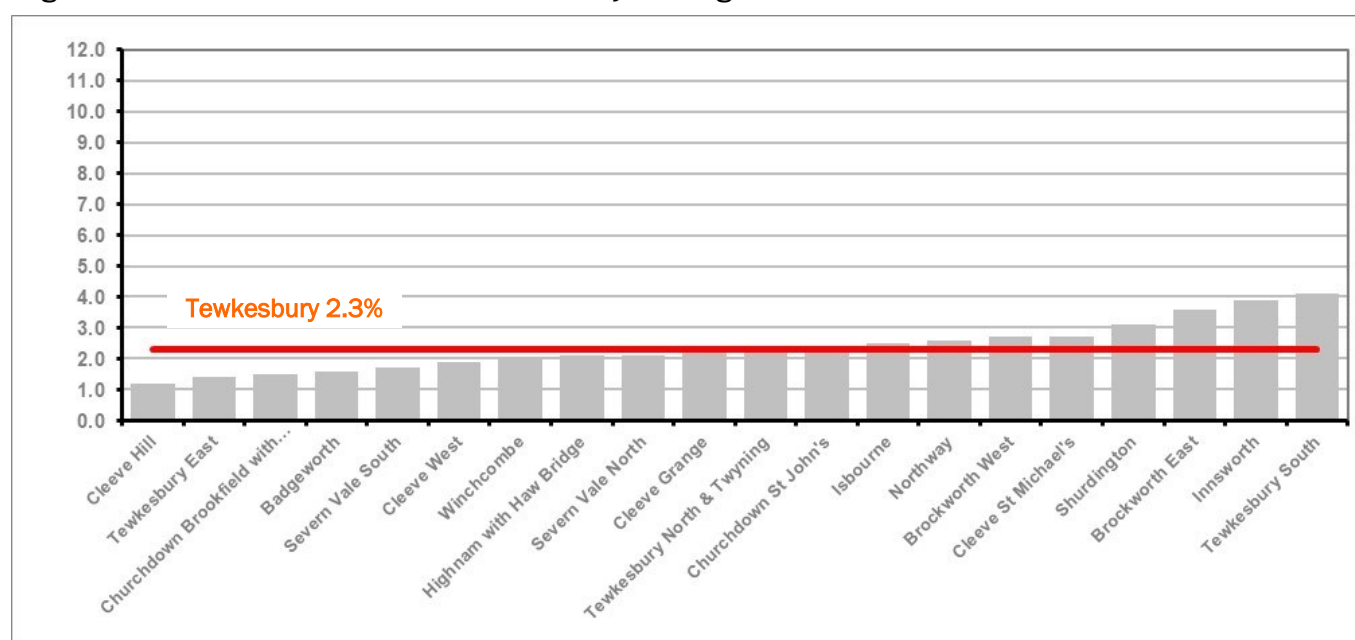
*Figure 14: Claimant rates across Tewkesbury Borough wards - March 2025*

Figure 14 shows the claimant rates in Tewkesbury Borough wards. The red line represents the average claimant rate across the District of 2.3%. Nine wards are above the average.



## PART 4: LOCAL AUTHORITY AND DISTRICT ANALYSIS

### 4.6 Tewkesbury Borough continued...

Table 10: Analysis of Claimant Count at Tewkesbury Borough level - March 2025

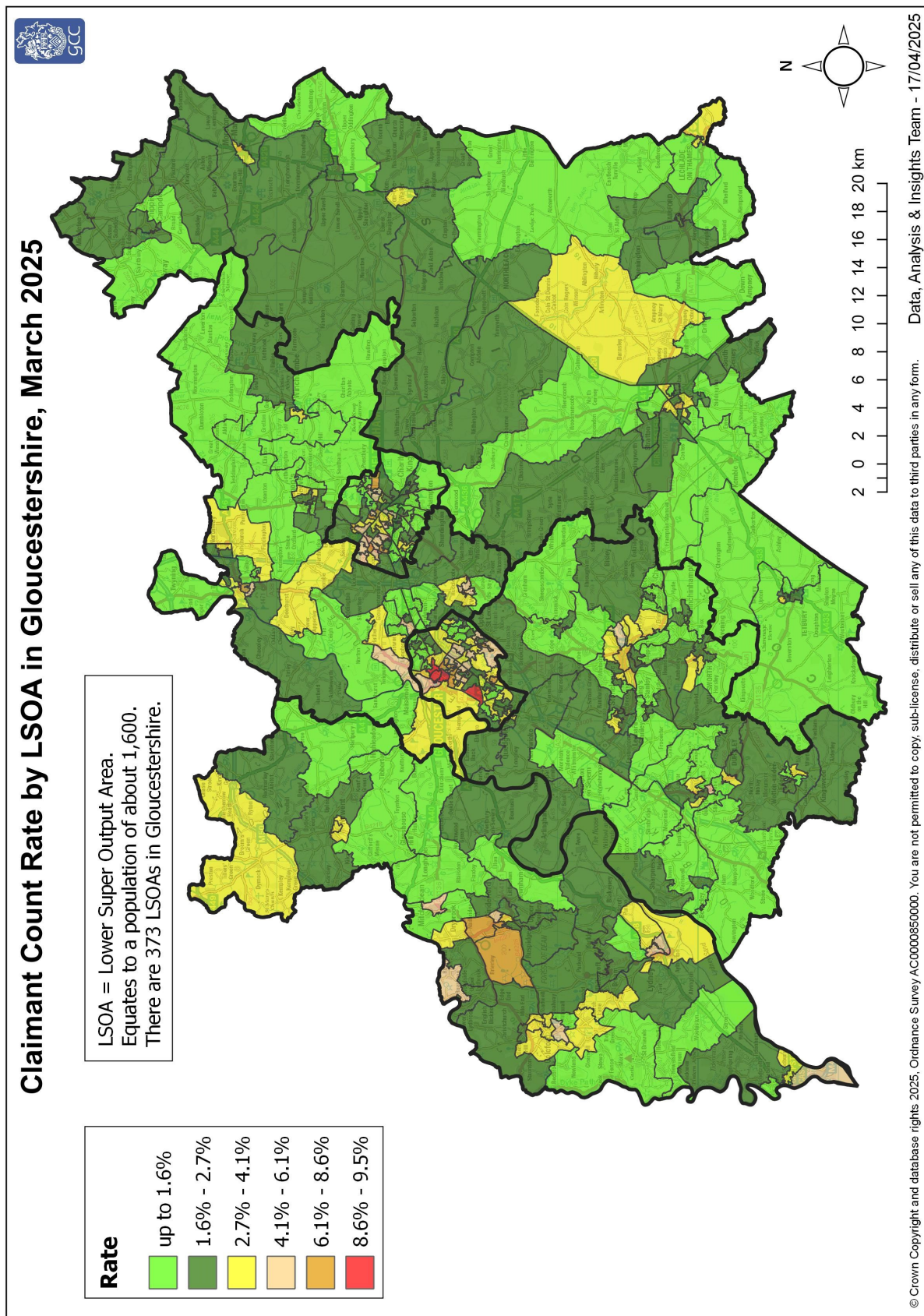
District	Ward	Rate	Rank*
Tewkesbury	Cleeve Hill	1.2	5
Tewkesbury	Tewkesbury East	1.4	10
Tewkesbury	Churchdown Brookfield with Hucclecote	1.5	14
Tewkesbury	Badgeworth	1.6	25
Tewkesbury	Severn Vale South	1.7	31
Tewkesbury	Cleeve West	1.9	45
Tewkesbury	Winchcombe	2.0	52
Tewkesbury	Highnam with Haw Bridge	2.1	57
Tewkesbury	Severn Vale North	2.1	57
Tewkesbury	Cleeve Grange	2.2	65
Tewkesbury	Tewkesbury North & Twynning	2.2	65
Tewkesbury	Churchdown St John's	2.4	76
Tewkesbury	Isbourne	2.5	82
Tewkesbury	Northway	2.6	89
Tewkesbury	Brockworth West	2.7	94
Tewkesbury	Cleeve St Michael's	2.7	94
Tewkesbury	Shurdington	3.1	106
Tewkesbury	Brockworth East	3.6	115
Tewkesbury	Innsworth	3.9	119
Tewkesbury	Tewkesbury South	4.1	122

	lowest 10% of county
	first quartile of county
	second quartile of county
	third quartile of county
	fourth quartile of county
	highest 10% of county

\* 1 = "best" and 138 = "worst"

Table 10 shows overall claimant rates for Tewkesbury Borough wards and their position relative to all wards in Gloucestershire.

## PART 5: MAP SHOWING DISTRIBUTION OF CLAIMANT RATE ACROSS GLOUCESTERSHIRE



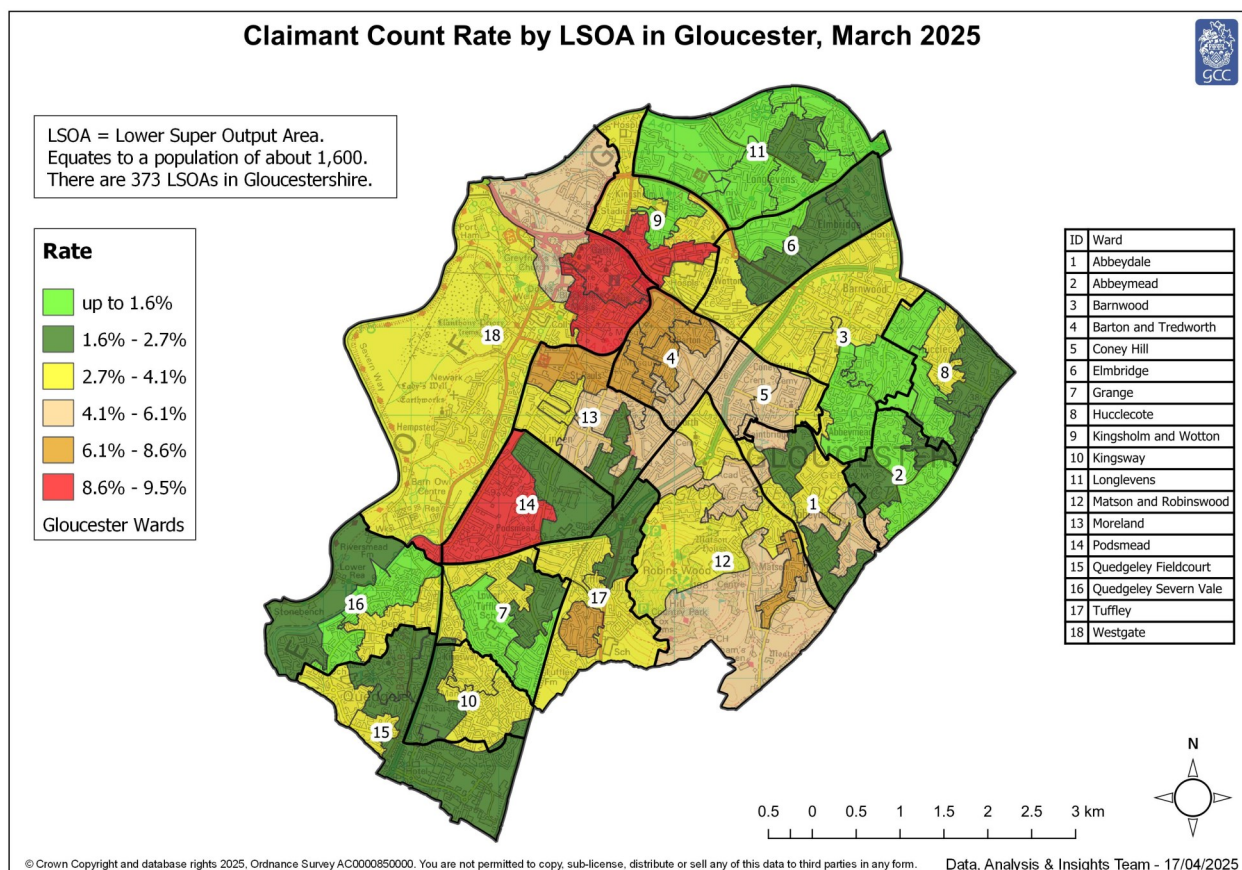
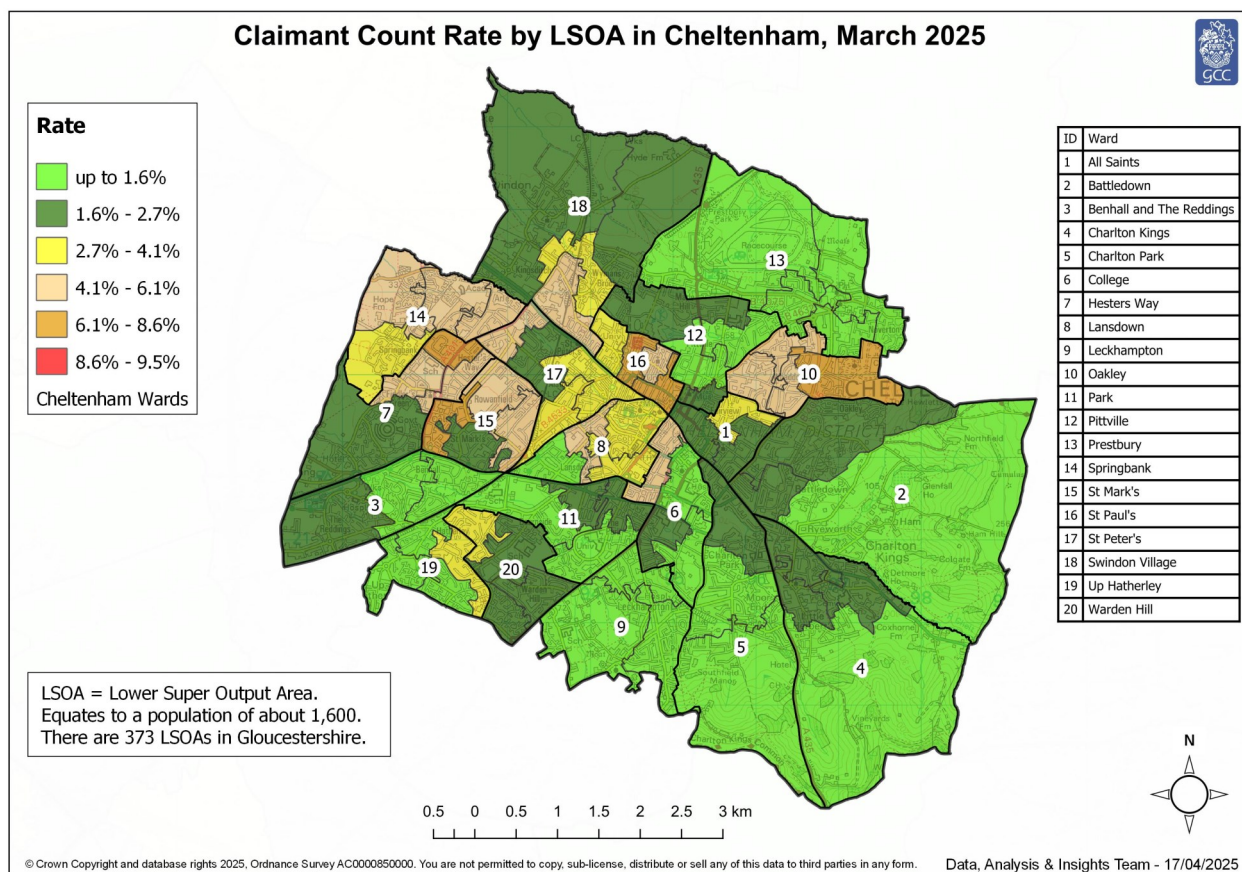
These maps currently show the 2011 LSOA boundaries.

Note: We have made changes to the way in which the rates illustrated on the maps are calculated - this means they are not comparable with those shown in previous bulletins.

Rates calculated by applying Lower Layer Super Output Area Population Estimates Mid-2022,  
Office for National Statistics



## PART 5: MAP SHOWING DISTRIBUTION OF CLAIMANT RATE ACROSS GLOUCESTERSHIRE



These maps currently show the 2011 LSOA boundaries.

Note: We have made changes to the way in which the rates illustrated on the maps are calculated - this means they are not comparable with those shown in previous bulletins.

Rates calculated by applying Lower Layer Super Output Area Population Estimates Mid-2022, Office for National Statistics

## PART 6: YOUTH UNEMPLOYMENT(18-24 year olds)

### Youth Claimant Rate and Claimant Count

Figure 15: Claimant Count for Gloucestershire over the past year

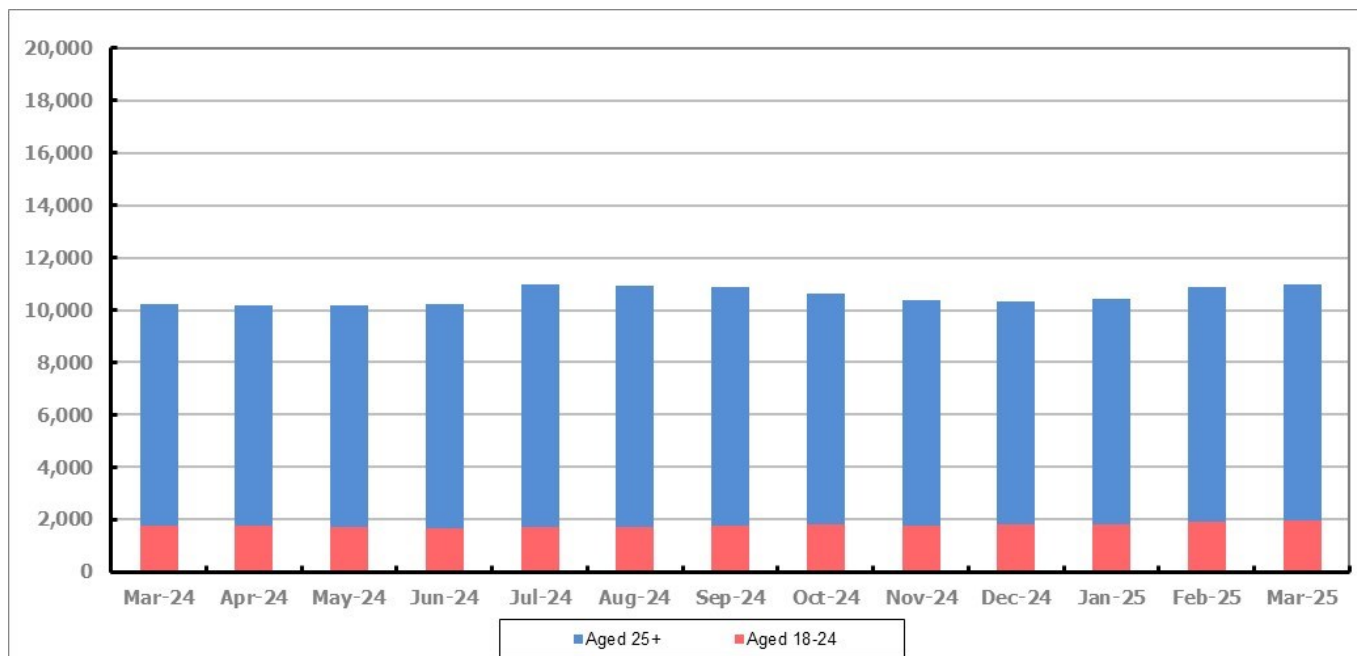


Figure 15 shows that in March 2025, 1,975 people aged 18-24 were claiming Job Seekers Allowance and Universal Credit who were not in work in Gloucestershire, this represents 17.9% of total working age claimants.

## PART 7: YOUNG PEOPLE NOT IN EDUCATION, EMPLOYMENT OR TRAINING (NEET) IN GLOUCESTERSHIRE

Data provided by Gloucestershire Youth Support Team on the situation of young people (16-18) in Gloucestershire who are not in education, employment or formal training.

Gloucestershire Youth Support Team is required to report performance on the Academic Year 12 and 13 (16/17 age) against nationally defined criteria for counting the NEET group to the Department for Education (DfE) on a monthly basis. The NEET group includes young people actively seeking education, employment or training as well as those young people who are either not yet ready or who are unable to access these opportunities because of their personal circumstances. The figures quoted below include young people in both of these categories.

(End of) March 2025

### Academic Year 12-13 Summary

	NEET	Cohort	%
Cheltenham	89	2485	3.58%
Cotswold	54	1827	2.96%
Forest	52	1753	2.97%
Gloucester	212	3564	5.95%
Stroud	78	2855	2.73%
Tewkesbury	78	2147	3.63%
Total	563	14631	3.85%

### 16-18 Age Summary

	NEET	Cohort	%
Cheltenham	105	2983	3.52%
Cotswold	59	2209	2.67%
Forest	64	2135	3.00%
Gloucester	253	4283	5.91%
Stroud	91	3482	2.61%
Tewkesbury	89	2617	3.40%
Total	661	17709	3.73%

16-18 Adjust NEET*	3.89%
--------------------	-------

Monthly Change	-19	26	-0.14%
Previous month	582	14605	3.98%

Monthly Change	-36	-591	-0.08%
Previous month	697	18300	3.81%

The academic year 12-13 group contains a proportion of young people who turn 18 in the academic year but were 17 on the 31<sup>st</sup> August the previous academic year so are entitled to learning through RPA (raising participation age).

Please note all figures quoted above are subject to change before the submission date to the DfE which usually happens in the second or third week of the month for the previous month.

If you would like to receive any further information on Gloucestershire's NEET strategy, then please contact [lynne.speak@gloucestershire.gov.uk](mailto:lynne.speak@gloucestershire.gov.uk).

(\*) Adjustment includes a proportion of young people aged 16-18 whose outcomes are not-known to Gloucestershire Youth Support Team.