

# Unemployment Bulletin

Issue 172 November 2022

## Notes on Claimant Count (Experimental Statistics) from ONS:

These Claimant Count Experimental Statistics relate to 10 November 2022. Enhancements to Universal Credit as part of the UK government's response to the coronavirus (COVID-19) mean that an increasing number of people became eligible for unemployment-related benefit support, although still employed. Consequently changes in the Claimant Count will not be wholly because of changes in the number of people who are unemployed. We are not able to identify to what extent people who are employed or unemployed have affected the numbers.

## Contents

<b>Part 1: Summary</b>	<b>1</b>
A summary of unemployment data at district, County, regional and national level	
<b>Part 2: County</b>	<b>3</b>
Unemployment figures for the County compared to the South West and the rest of the UK	
<b>Part 3: Districts</b>	<b>4</b>
A comparative break down of unemployment figures by district	
<b>Part 4: Wards</b>	
Further breakdown of unemployment figures by ward:	
Cheltenham	6
Cotswolds	8
Forest of Dean	10
Gloucester	12
Stroud	14
Tewkesbury	16
<b>Part 5: Map</b>	<b>18</b>
Distribution of claimant rate across Gloucestershire	
<b>Part 6: Youth Unemployment</b>	<b>20</b>
Unemployment data for the 18-24 year old age group	
<b>Part 7: Young People</b>	<b>21</b>
Data about Young People Not in Education, Employment or Training (NEET)	

The Claimant Count is a measure of the number of people who are unemployed and claiming benefits. From 1996 until the recent introduction of Universal Credit, this was based on the number of people claiming Jobseeker's Allowance. However, since its introduction some unemployment benefit claimants will be claiming Universal Credit instead. **To reflect this change, the Claimant Count has been expanded to include people claiming Jobseeker's Allowance plus those who claim Universal Credit and who are searching for work.**

Gloucestershire is in the process of transitioning to full Universal Credit. This means a broader span of claimants will be required to look for work than previously under Jobseekers Allowance. As more people are brought within the coverage of Universal Credit, the Claimant Count is set to rise noticeably over time. This will happen irrespective of how the economy performs and is a feature of the design of Universal Credit which brings additional groups of people into 'Searching for Work' conditionality (and therefore the Claimant Count), to help encourage and support these claimants into work.

For more information about Universal Credit please see the [ONS website](https://www.ons.gov.uk/universal-credit).

## INTRODUCTION

The Unemployment Bulletin provides a monthly update on unemployment data for Gloucestershire, the South West region and the United Kingdom. It is produced by the Data & Analysis Team in the County Council's Planning, Performance and Change function. The data are sourced from the Office for National Statistics via Nomis ([www.nomis.co.uk](http://www.nomis.co.uk)). All data are rounded to the nearest 5 and may not precisely add to the sum of the number of people claiming JSA, and the number of people claiming Universal Credit required to seek work, due to independent rounding.

## PART 1: SUMMARY

**The claimant rate in Gloucestershire was 2.2% in November 2022.** The South West rate increased to 2.5% and the UK rate remained at 3.6%. Gloucestershire's rate was 0.3% lower than the South West average of 2.5%, and 1.4% lower than the UK average of 3.6%.

**The claimant count in Gloucestershire in November 2022 increased by 245 people.** The amount of people claiming in November 2022 was 2.9% higher than the number in October 2022. This compares to a 3.3% increase in the South West and a 2.4% increase in the UK.

Produced by:

**Data & Analysis Team**  
Planning, Performance and Change  
Gloucestershire County Council  
December 2022

## DISTRICTS AT A GLANCE

At a glance unemployment information grouped by district. Includes:

**Claimant count:** Total number of people claiming Job Seekers Allowance and Universal Credit who are not in work in November 2022

**Claimant count change on previous month:** How much larger/smaller November's claimant count is compared to October expressed as a %

**Claimant rate:** The % of working age population claiming Job Seekers Allowance and Universal Credit who are not in work in November 2022

**Highest claiming ward:** The ward with the highest claim count in that district and the rate

### CHELTEMHAM BOROUGH

Claimant count:	1,725
Claimant count change on previous month:	0.6%
Claimant rate:	2.4%
Highest claiming ward(s)	Oakley (4.6%)

### GLOUCESTER CITY

Claimant count:	2,600
Claimant count change on previous month:	2.4%
Claimant rate:	3.2%
Highest claiming ward(s)	Barton and Tredworth (6.6%)

### COTSWOLD DISTRICT

Claimant count:	885
Claimant count change on previous month:	2.9%
Claimant rate:	1.7%
Highest claiming ward(s)	Watermoor (3.3%)

### STROUD DISTRICT

Claimant count:	1,135
Claimant count change on previous month:	3.2%
Claimant rate:	1.6%
Highest claiming ward(s)	Stroud Central (3.6%)

### FOREST OF DEAN

Claimant count:	1,220
Claimant count change on previous month:	4.7%
Claimant rate:	2.4%
Highest claiming ward(s)	Lydney East (4.5%)

### TEWKESBURY BOROUGH

Claimant count:	1,095
Claimant count change on previous month:	4.8%
Claimant rate:	1.9%
Highest claiming ward(s)	Tewkesbury South (3.8%)

## PART 2: UK, SW AND GLOUCESTERSHIRE INDICATORS

The unemployment situation in Gloucestershire compared to the South West and the UK.

### Claimant Rate

Figure 1: Claimant Rate for Gloucestershire, the South West and UK over the past year

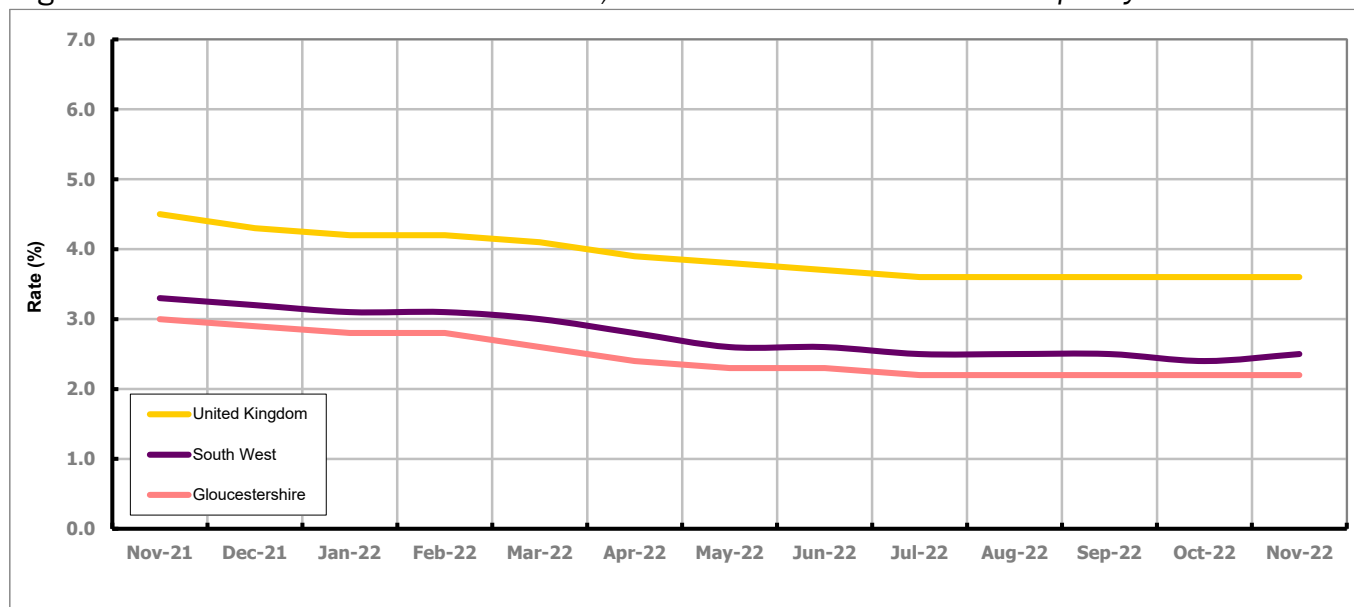


Figure 1 shows the claimant rate for Gloucestershire at 2.2% in November 2022. The Gloucestershire rate has been lower than the South West average since December 2015, with the exception of April and May 2016 when it was the same. On average, it has been approximately 1.4% lower than the UK average since the same month of the previous year.

### Claimant Count

Table 1: Analysis of UK, South West and Gloucestershire Claimant Counts

Area	Claimant Count in November 2022	% change on October 2022	Consecutive months increasing
UK	1,524,395	2.4%	0
South West	85,520	3.3%	0
Gloucestershire	8,665	2.9%	0

Table 1 shows that in November 2022, the number of claimants in Gloucestershire was 2.9% higher than the number in October 2022.

## PART 3: LOCAL AUTHORITY DISTRICT ANALYSIS

### Claimant Rate and Claimant Count

Figure 2: Claimant Rate (%) across Gloucestershire - November 2022

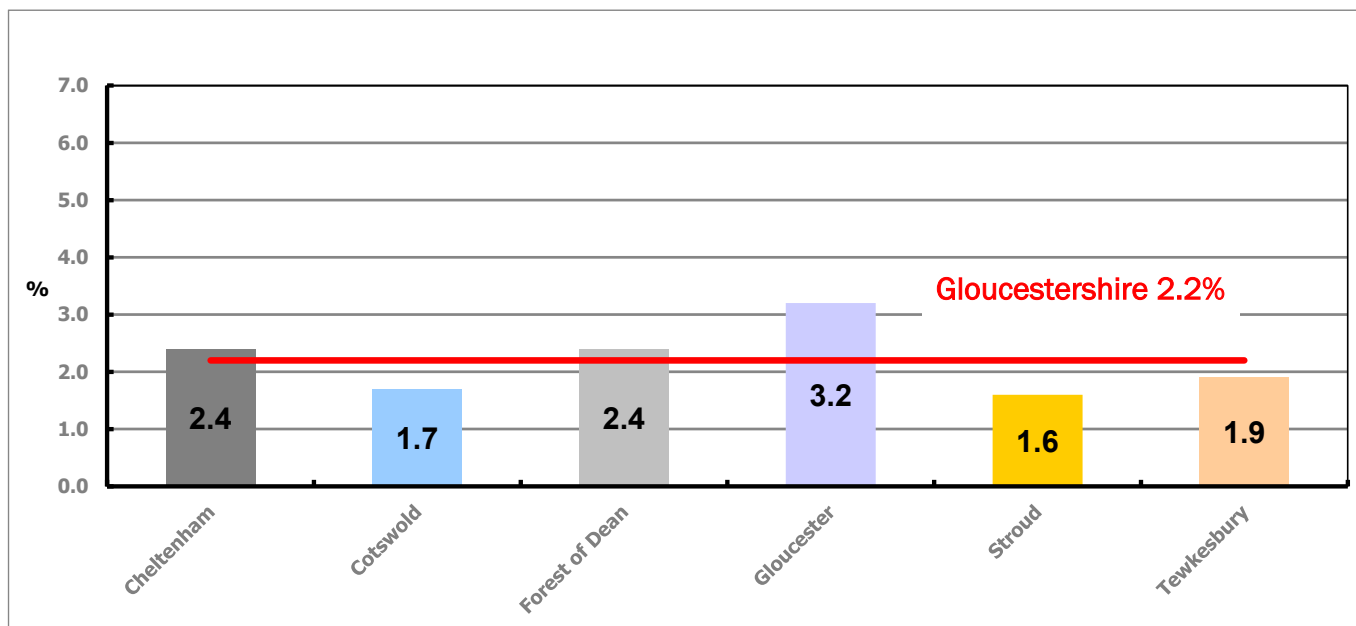


Figure 2 shows the claimant rate for November 2022 in Gloucestershire. Between October and November 2022 the rate increased in all districts except Cheltenham and Cotswold which remained the same.

Table 2: Analysis of Gloucestershire and District Claimant Counts

Total	Nov 22 Number	Nov 22 Rate	Oct 22 Number	Oct 22 Rate	Monthly change	% monthly change	Monthly change of rate
<b>Gloucestershire</b>	8,665	2.2	8,420	2.2	245	2.9%	0.0
Cheltenham	1,725	2.4	1,715	2.4	10	0.6%	0.0
Cotswold	885	1.7	860	1.7	25	2.9%	0.0
Forest of Dean	1,220	2.4	1,165	2.3	55	4.7%	0.1
Gloucester	2,600	3.2	2,540	3.1	60	2.4%	0.1
Stroud	1,135	1.6	1,100	1.5	35	3.2%	0.1
Tewkesbury	1,095	1.9	1,045	1.8	50	4.8%	0.1

Table 2 shows the change in the claimant count in November 2022 compared to October 2022. All districts saw an increase in the number of claimants.

Table 3: Analysis of Male Gloucestershire and District Claimant Counts

Male	Nov 22 Number	Nov 22 Rate	Oct 22 Number	Oct 22 Rate	Monthly change	% monthly change	Monthly change of rate
<b>Gloucestershire</b>	4,815	2.5	4,715	2.5	100	2.1%	0.0
Cheltenham	1,020	2.8	1,020	2.8	0	0.0%	0.0
Cotswold	440	1.7	420	1.7	20	4.8%	0.0
Forest of Dean	640	2.5	635	2.5	5	0.8%	0.0
Gloucester	1,520	3.7	1,495	3.7	25	1.7%	0.0
Stroud	595	1.7	580	1.6	15	2.6%	0.1
Tewkesbury	600	2.1	565	2.0	35	6.2%	0.1

Table 3 shows the change in the male claimant count in November 2022 compared to October 2022. All districts saw an increase in the number of male claimants except Cheltenham which remained the same.

Table 4: Analysis of Female Gloucestershire and District Claimant Counts

Female	Nov 22 Number	Nov 22 Rate	Oct 22 Number	Oct 22 Rate	Monthly change	% monthly change	Monthly change of rate
<b>Gloucestershire</b>	3,845	2.0	3,705	1.9	140	3.8%	0.1
Cheltenham	705	2.0	690	1.9	15	2.2%	0.1
Cotswold	445	1.7	435	1.6	10	2.3%	0.1
Forest of Dean	580	2.2	530	2.0	50	9.4%	0.2
Gloucester	1,080	2.6	1,045	2.6	35	3.3%	0.0
Stroud	540	1.5	520	1.4	20	3.8%	0.1
Tewkesbury	500	1.7	480	1.6	20	4.2%	0.1

Table 4 shows the change in the female claimant count in November 2022 compared to October 2022. All districts saw an increase in the number of female claimants.

## PART 4: LOCAL AUTHORITY DISTRICT AND WARD ANALYSIS

This section covers the six districts and a comparison of their constituent wards.

### 4.1 Cheltenham Borough

#### Claimant Rate and Claimant Count

Figure 3: Cheltenham Borough claimant rate over the last year

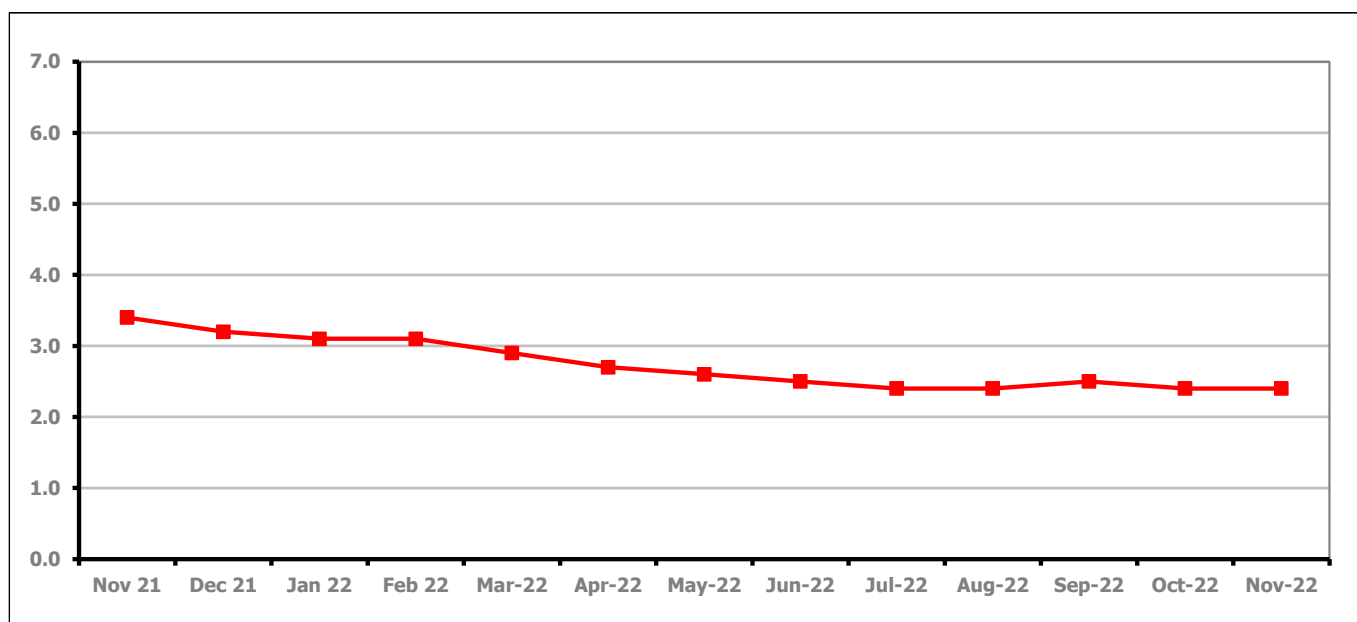


Figure 3 shows the claimant rate in Cheltenham remained at 2.4% in November 2022.

Figure 4: Claimant rates across Cheltenham Borough wards - November 2022

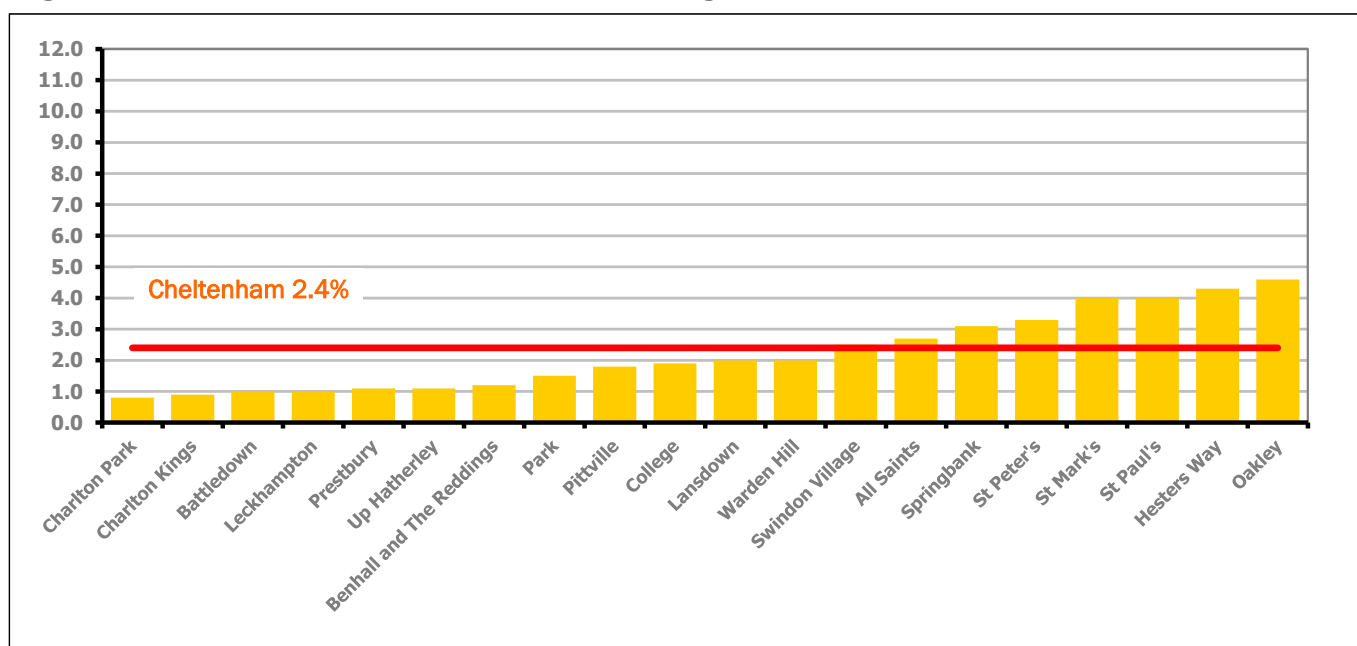


Figure 4 shows the claimant rates for Cheltenham Borough wards. The red line represents the average claimant rate across the Borough of 2.4%. Eight wards lie above the average.

## PART 4: LOCAL AUTHORITY DISTRICT AND WARD ANALYSIS

### 4.1 Cheltenham Borough continued...

Table 5: Analysis of Claimant Count at Cheltenham Borough ward level - November 2022

District	Ward	Rate	Rank*
Cheltenham	Charlton Park	0.8	2
Cheltenham	Charlton Kings	0.9	4
Cheltenham	Battledown	1.0	11
Cheltenham	Leckhampton	1.0	11
Cheltenham	Prestbury	1.1	16
Cheltenham	Up Hatherley	1.1	16
Cheltenham	Benhall and The Reddings	1.2	23
Cheltenham	Park	1.5	42
Cheltenham	Pittville	1.8	71
Cheltenham	College	1.9	75
Cheltenham	Lansdown	2.0	81
Cheltenham	Warden Hill	2.0	81
Cheltenham	Swindon Village	2.5	105
Cheltenham	All Saints	2.7	113
Cheltenham	Springbank	3.1	119
Cheltenham	St Peter's	3.3	121
Cheltenham	St Mark's	4.0	126
Cheltenham	St Paul's	4.0	126
Cheltenham	Hesters Way	4.3	131
Cheltenham	Oakley	4.6	135

	lowest 10% of county
	first quartile of county
	second quartile of county
	third quartile of county
	fourth quartile of county
	highest 10% of county

\* 1 = "best" and 138 = "worst"

Table 5 shows overall claimant rates for Cheltenham Borough wards and their position relative to all wards in Gloucestershire.

## PART 4: LOCAL AUTHORITY DISTRICT AND WARD ANALYSIS

### 4.2 Cotswold District

#### Claimant Rate and Claimant Count

Figure 5: Cotswold District claimant rate over the last year

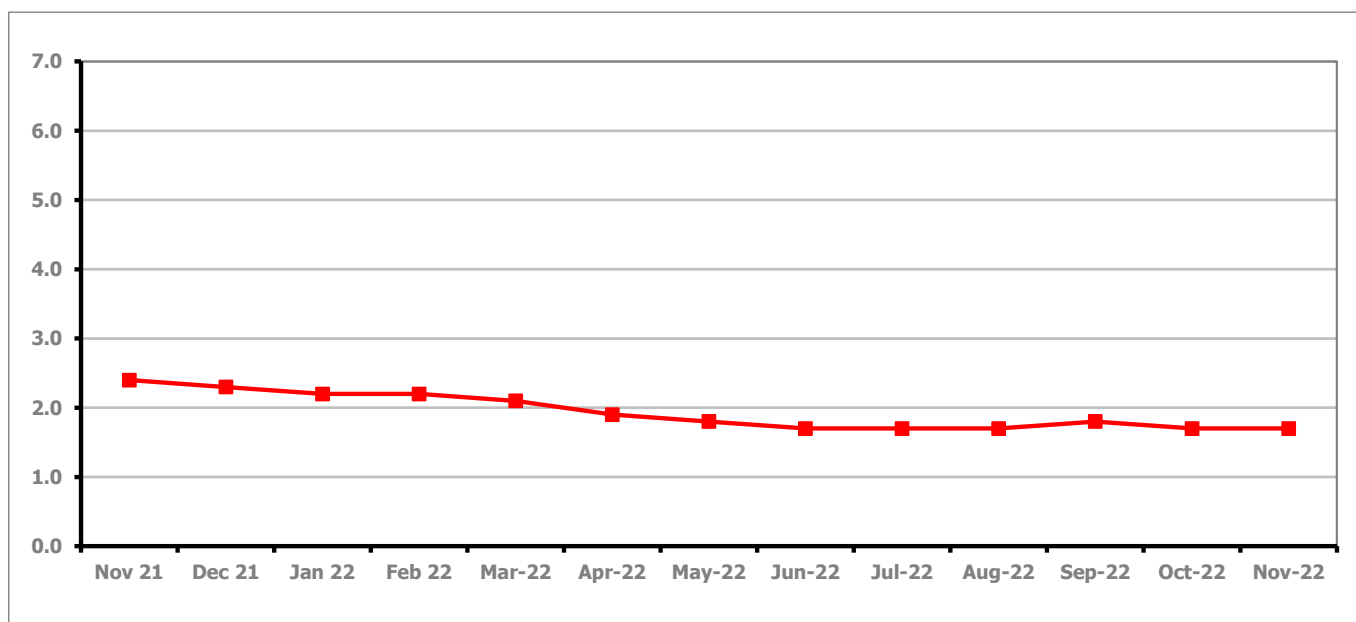


Figure 5 shows the claimant rate in Cotswold District remained at 1.7% in November 2022.

Figure 6: Claimant rates across Cotswold District wards - November 2022

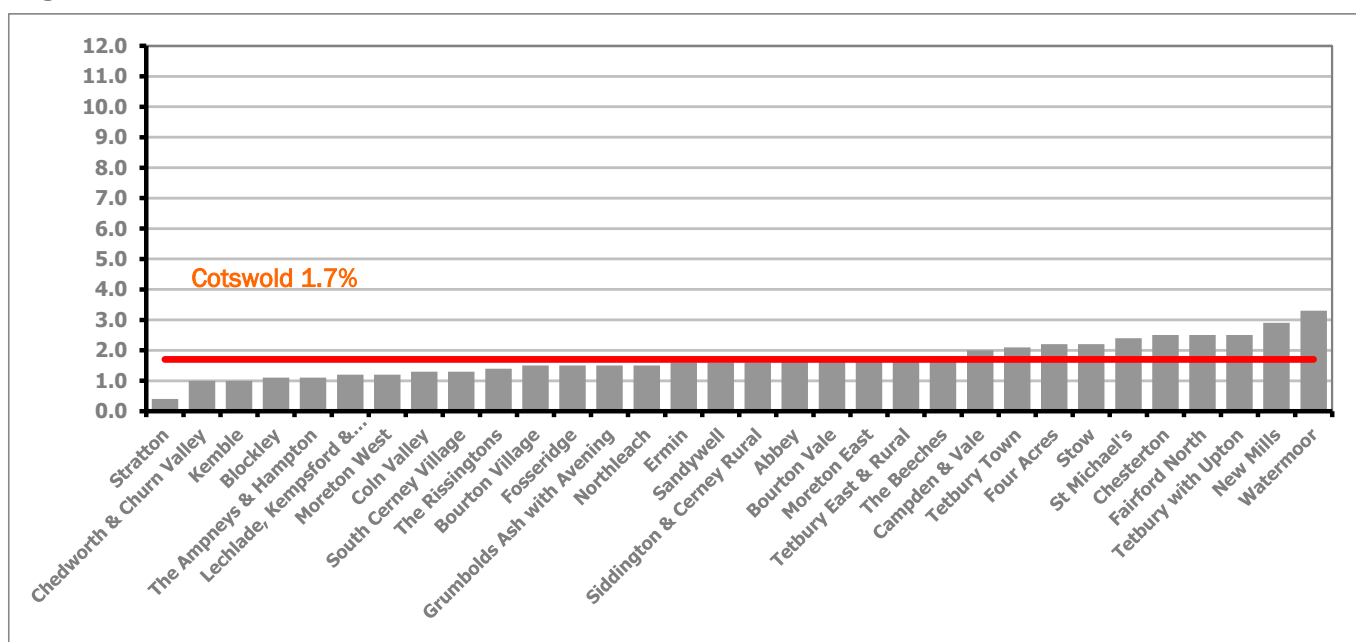


Figure 6 shows the claimant rates for Cotswold District wards. The red line represents the average claimant rate across the District of 1.7%. Eleven wards lie above the average.

## PART 4: LOCAL AUTHORITY DISTRICT AND WARD ANALYSIS

### 4.2 Cotswold District continued...

Table 6: Analysis of Claimant Count at Cotswold District ward level - November 2022

District	Ward	Rate	Rank*
Cotswolds	Stratton	0.4	1
Cotswolds	Chedworth & Churn Valley	1.0	11
Cotswolds	Kemble	1.0	11
Cotswolds	Blockley	1.1	16
Cotswolds	The Ampneys & Hampton	1.1	16
Cotswolds	Lechlade, Kempsford & Fairford South	1.2	23
Cotswolds	Moreton West	1.2	23
Cotswolds	Coln Valley	1.3	33
Cotswolds	South Cerney Village	1.3	33
Cotswolds	The Rissingtons	1.4	39
Cotswolds	Bourton Village	1.5	42
Cotswolds	Fosseridge	1.5	42
Cotswolds	Grumbolds Ash with Avening	1.5	42
Cotswolds	Northleach	1.5	42
Cotswolds	Ermin	1.6	52
Cotswolds	Sandywell	1.6	52
Cotswolds	Siddington & Cerney Rural	1.6	52
Cotswolds	Abbey	1.7	60
Cotswolds	Bourton Vale	1.7	60
Cotswolds	Moreton East	1.7	60
Cotswolds	Tetbury East & Rural	1.7	60
Cotswolds	The Beeches	1.8	71
Cotswolds	Campden & Vale	2.0	81
Cotswolds	Tetbury Town	2.1	93
Cotswolds	Four Acres	2.2	95
Cotswolds	Stow	2.2	95
Cotswolds	St Michael's	2.4	102
Cotswolds	Chesterton	2.5	105
Cotswolds	Fairford North	2.5	105
Cotswolds	Tetbury with Upton	2.5	105
Cotswolds	New Mills	2.9	117
Cotswolds	Watermoor	3.3	121

	lowest 10% of county
	first quartile of county
	second quartile of county
	third quartile of county
	fourth quartile of county
	highest 10% of county

\* 1 = "best" and 138 = "worst"

Table 6 shows overall claimant rates for Cotswold District wards and their position relative to all wards in Gloucestershire.

## PART 4: LOCAL AUTHORITY DISTRICT AND WARD ANALYSIS

### 4.3 Forest of Dean District

#### Claimant Rate and Claimant Count

Figure 7: Forest of Dean District claimant rate over the last year

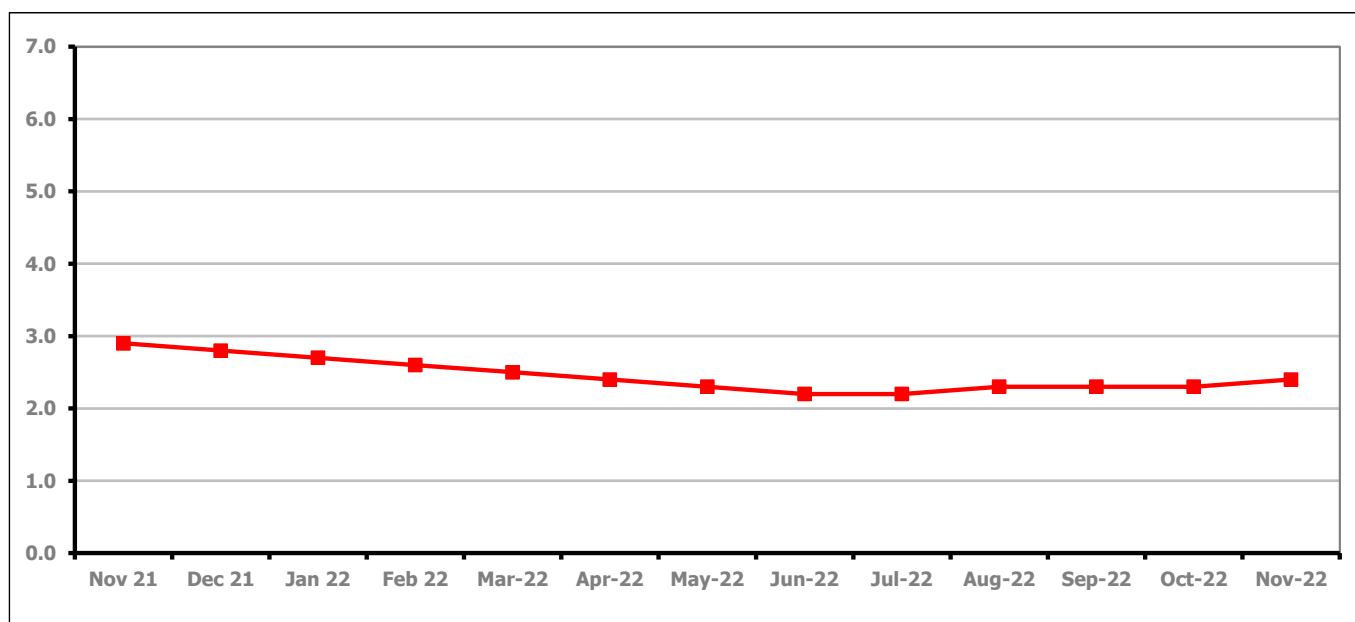


Figure 7 shows the claimant rate in the Forest of Dean increased to 2.4% in November 2022.

Figure 8: Claimant rates across Forest of Dean District wards - November 2022

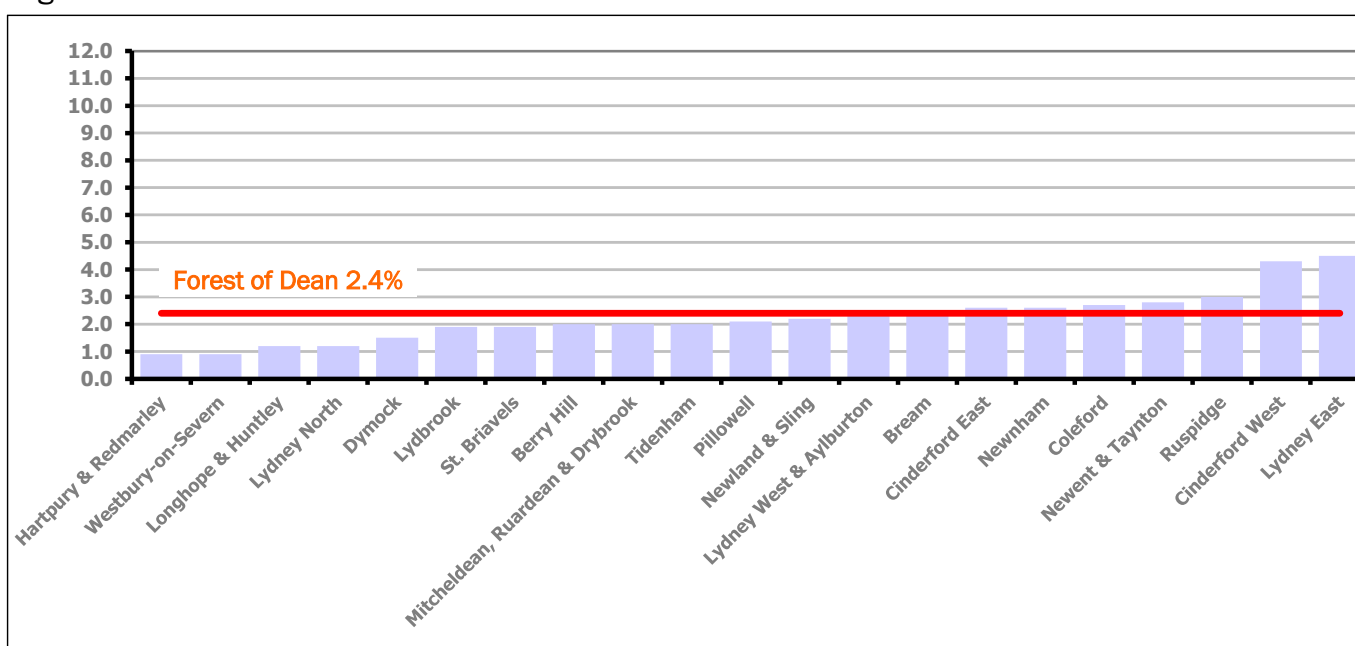


Figure 8 shows the claimant rates for the Forest of Dean District wards. The red line represents the average claimant rate across the District of 2.4%. Eight wards lie above the average.

**PART 4: LOCAL AUTHORITY DISTRICT AND WARD ANALYSIS****4.3 Forest of Dean District continued...***Table 7: Analysis of Claimant Count at Forest of Dean District ward level - November 2022*

District	Ward	Rate	Rank*
Forest	Hartpury & Redmarley	0.9	4
Forest	Westbury-on-Severn	0.9	4
Forest	Longhope & Huntley	1.2	23
Forest	Lydney North	1.2	23
Forest	Dymock	1.5	42
Forest	Lydbrook	1.9	75
Forest	St. Briavels	1.9	75
Forest	Berry Hill	2.0	81
Forest	Mitcheldean, Ruardean & Drybrook	2.0	81
Forest	Tidenham	2.0	81
Forest	Pillowell	2.1	93
Forest	Newland & Sling	2.2	95
Forest	Lydney West & Aylburton	2.3	99
Forest	Bream	2.5	105
Forest	Cinderford East	2.6	111
Forest	Newnham	2.6	111
Forest	Coleford	2.7	113
Forest	Newent & Taynton	2.8	116
Forest	Ruspidge	3.0	118
Forest	Cinderford West	4.3	131
Forest	Lydney East	4.5	134

	lowest 10% of county
	first quartile of county
	second quartile of county
	third quartile of county
	fourth quartile of county
	highest 10% of county

\* 1 = "best" and 138 = "worst"

Table 7 shows overall claimant rates for the Forest of Dean District wards and their position relative to all wards in Gloucestershire.

## PART 4: LOCAL AUTHORITY DISTRICT AND WARD ANALYSIS

### 4.4 Gloucester City

#### Claimant Rate and Claimant Count

Figure 9: Gloucester City claimant rate over the last year

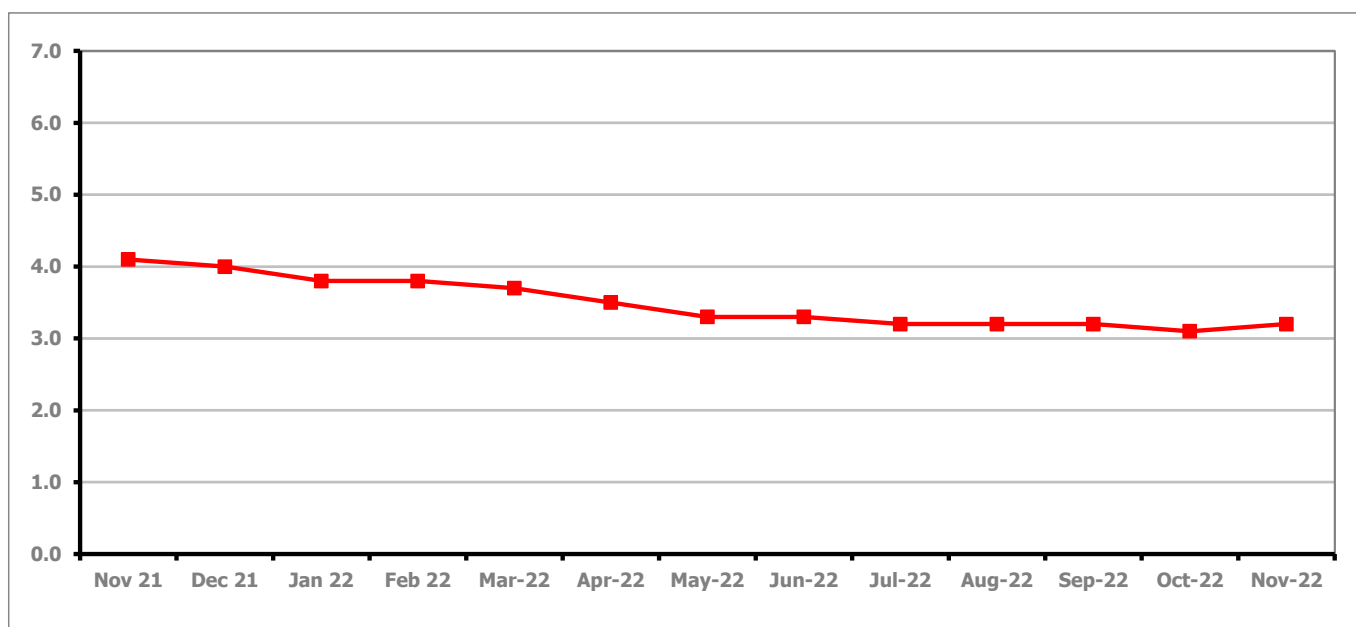


Figure 9 shows the claimant rate for Gloucester City increased to 3.2% in November 2022.

Figure 10: Claimant rates across Gloucester City wards - November 2022

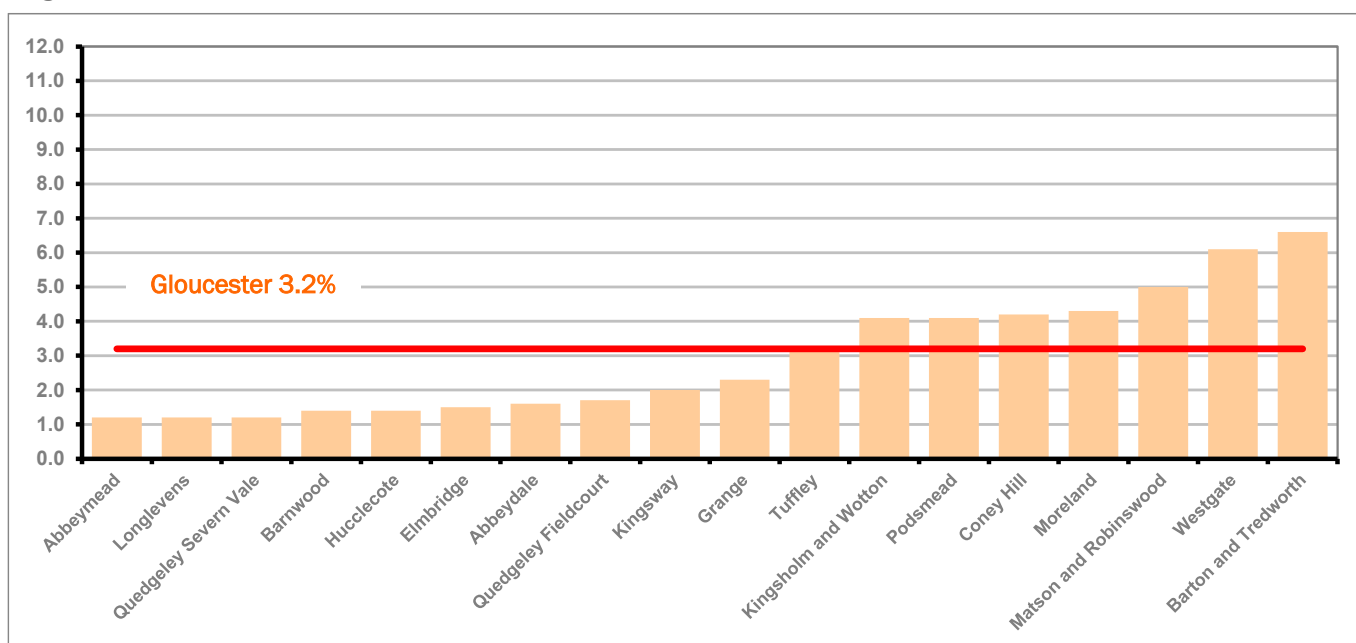


Figure 10 shows the claimant rates for Gloucester City district wards. The red line represents the average claimant rate across the City of 3.2%. Seven wards lie above the average.

## PART 4: LOCAL AUTHORITY DISTRICT AND WARD ANALYSIS

### 4.4 Gloucester City continued...

Table 8: Analysis of Claimant Count at Gloucester City ward level - November 2022

District	Ward	Rate	Rank*
Gloucester	Abbeymead	1.2	23
Gloucester	Longlevens	1.2	23
Gloucester	Quedgeley Severn Vale	1.2	23
Gloucester	Barnwood	1.4	39
Gloucester	Hucclecote	1.4	39
Gloucester	Elmbridge	1.5	42
Gloucester	Abbeydale	1.6	52
Gloucester	Quedgeley Fieldcourt	1.7	60
Gloucester	Kingsway	2.0	81
Gloucester	Grange	2.3	99
Gloucester	Tuffley	3.2	120
Gloucester	Kingsholm and Wotton	4.1	128
Gloucester	Podsmead	4.1	128
Gloucester	Coney Hill	4.2	130
Gloucester	Moreland	4.3	131
Gloucester	Matson and Robinswood	5.0	136
Gloucester	Westgate	6.1	137
Gloucester	Barton and Tredworth	6.6	138

	lowest 10% of county
	first quartile of county
	second quartile of county
	third quartile of county
	fourth quartile of county
	highest 10% of county

\* 1 = "best" and 138 = "worst"

Table 8 shows overall claimant rates for Gloucester City wards and their position relative to all wards in Gloucestershire.

## PART 4: LOCAL AUTHORITY DISTRICT AND WARD ANALYSIS

### 4.5 Stroud District

#### Claimant Rate and Claimant Count

Figure 11: Stroud District claimant rate over the last year

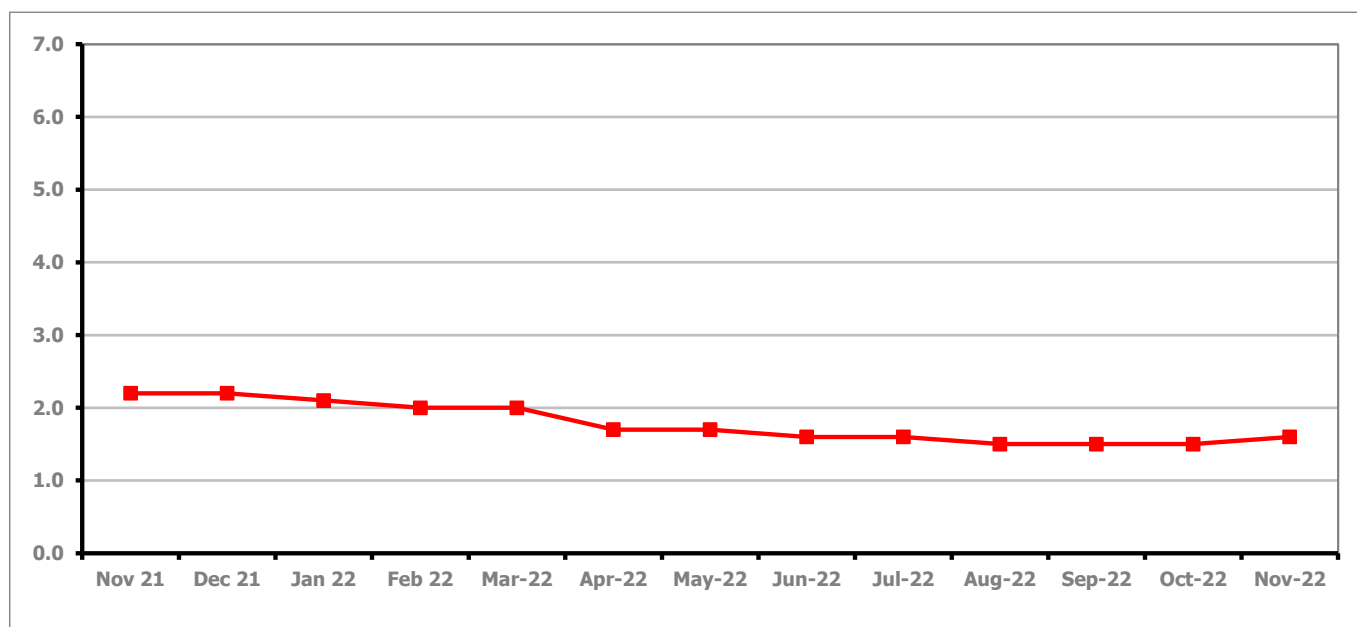


Figure 11 shows the claimant rate for Stroud increased to 1.6% in November 2022.

Figure 12: Claimant rates across Stroud District wards - November 2022

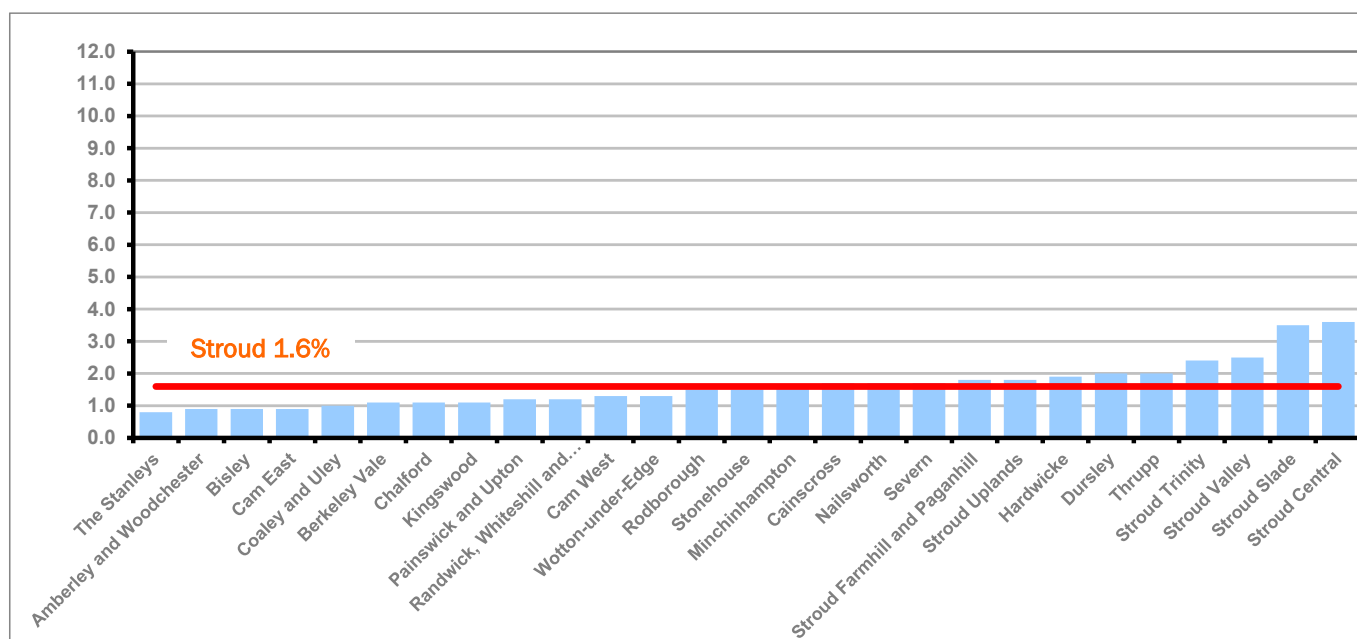


Figure 12 shows the claimant rates in Stroud District wards. The red line represents the average claimant rate across the District of 1.6%. Twelve wards are above the average.

## PART 4: LOCAL AUTHORITY AND DISTRICT ANALYSIS

### 4.5 Stroud District continued...

Table 9: Analysis of Claimant Count at Stroud District ward level - November 2022

District	Ward	Rate	Rank*
Stroud	The Stanleys	0.8	2
Stroud	Amberley and Woodchester	0.9	4
Stroud	Bisley	0.9	4
Stroud	Cam East	0.9	4
Stroud	Coaley and Uley	1.0	11
Stroud	Berkeley Vale	1.1	16
Stroud	Chalford	1.1	16
Stroud	Kingswood	1.1	16
Stroud	Painswick and Upton	1.2	23
Stroud	Randwick, Whiteshill and Ruscombe	1.2	23
Stroud	Cam West	1.3	33
Stroud	Wotton-under-Edge	1.3	33
Stroud	Rodborough	1.5	42
Stroud	Stonehouse	1.5	42
Stroud	Minchinhampton	1.6	52
Stroud	Cainscross	1.7	60
Stroud	Nailsworth	1.7	60
Stroud	Severn	1.7	60
Stroud	Stroud Farmhill and Paganhill	1.8	71
Stroud	Stroud Uplands	1.8	71
Stroud	Hardwicke	1.9	75
Stroud	Dursley	2.0	81
Stroud	Thrupp	2.0	81
Stroud	Stroud Trinity	2.4	102
Stroud	Stroud Valley	2.5	105
Stroud	Stroud Slade	3.5	123
Stroud	Stroud Central	3.6	124

	lowest 10% of county
	first quartile of county
	second quartile of county
	third quartile of county
	fourth quartile of county
	highest 10% of county

\* 1 = "best" and 138 = "worst"

Table 9 shows overall claimant rates for Stroud District wards and their position relative to all wards in Gloucestershire.

## PART 4: LOCAL AUTHORITY DISTRICT AND WARD ANALYSIS

### 4.6 Tewkesbury Borough

#### Claimant Rate and Claimant Count

Figure 13: Tewkesbury Borough claimant rate over the last year

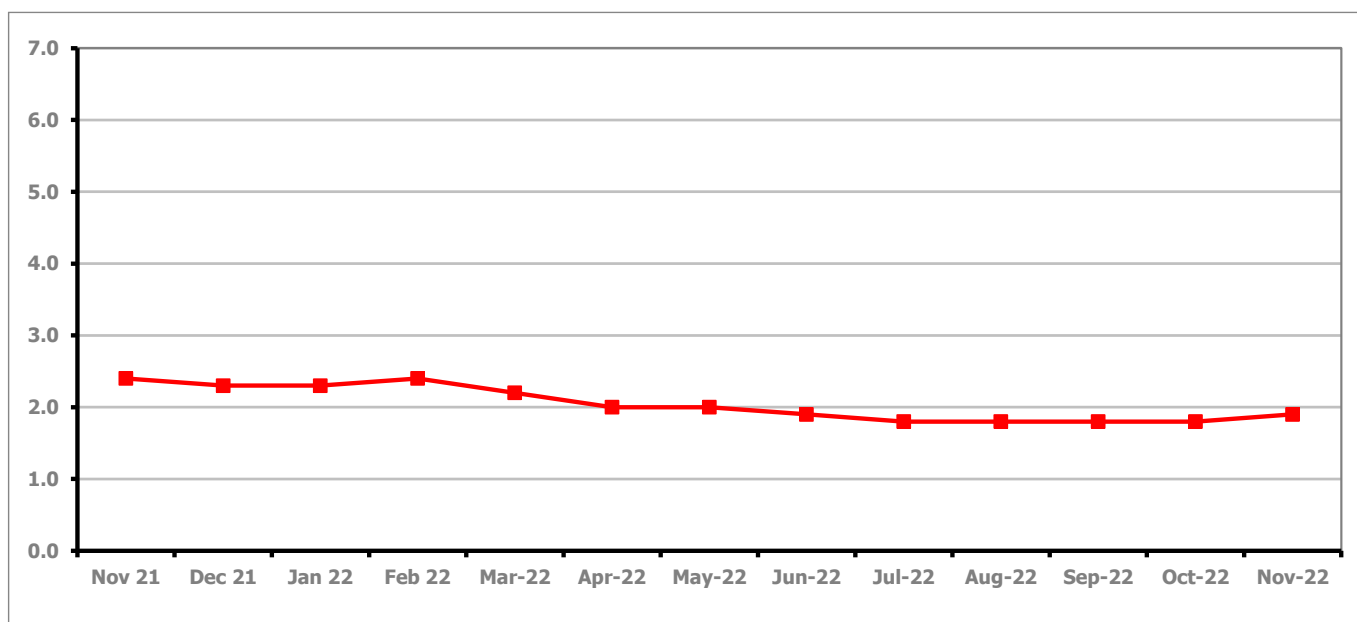


Figure 13 shows the claimant rate for Tewkesbury Borough increased to 1.9% in November 2022.

Figure 14: Claimant rates across Tewkesbury Borough wards - November 2022

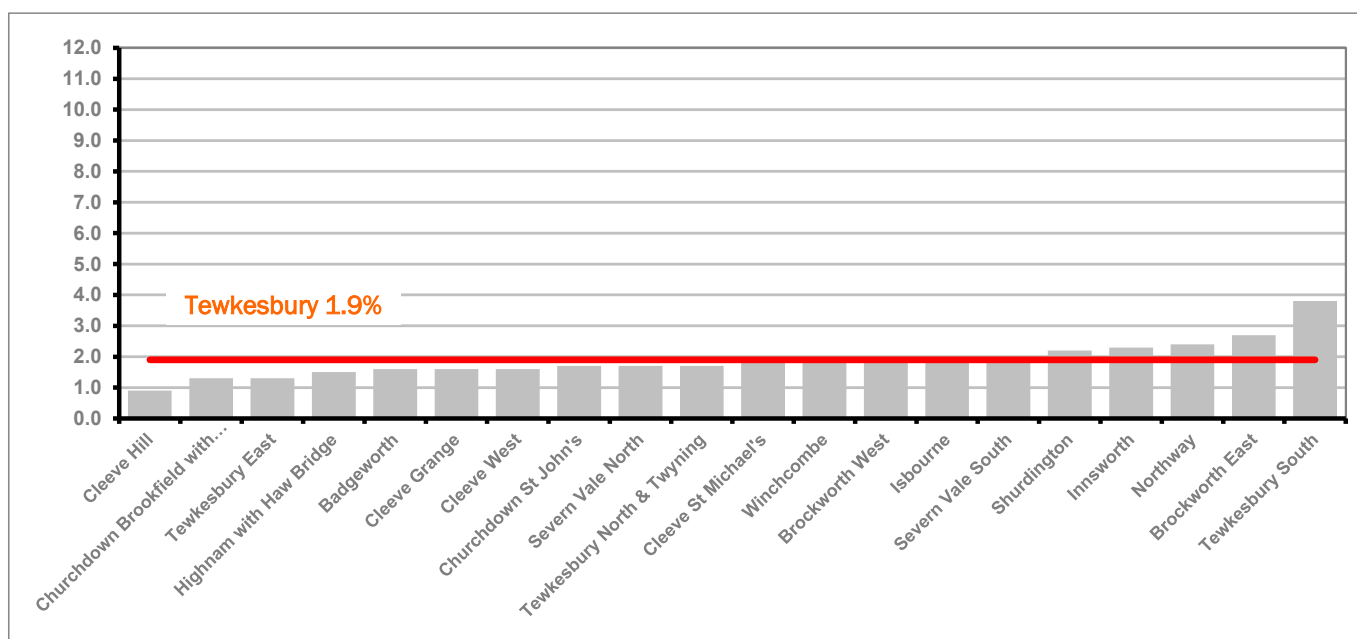


Figure 14 shows the claimant rates in Tewkesbury Borough wards. The red line represents the average claimant rate across the District of 1.9%. Eight wards are above the average.

## PART 4: LOCAL AUTHORITY AND DISTRICT ANALYSIS

### 4.6 Tewkesbury Borough continued...

Table 10: Analysis of Claimant Count at Tewkesbury Borough level - November 2022

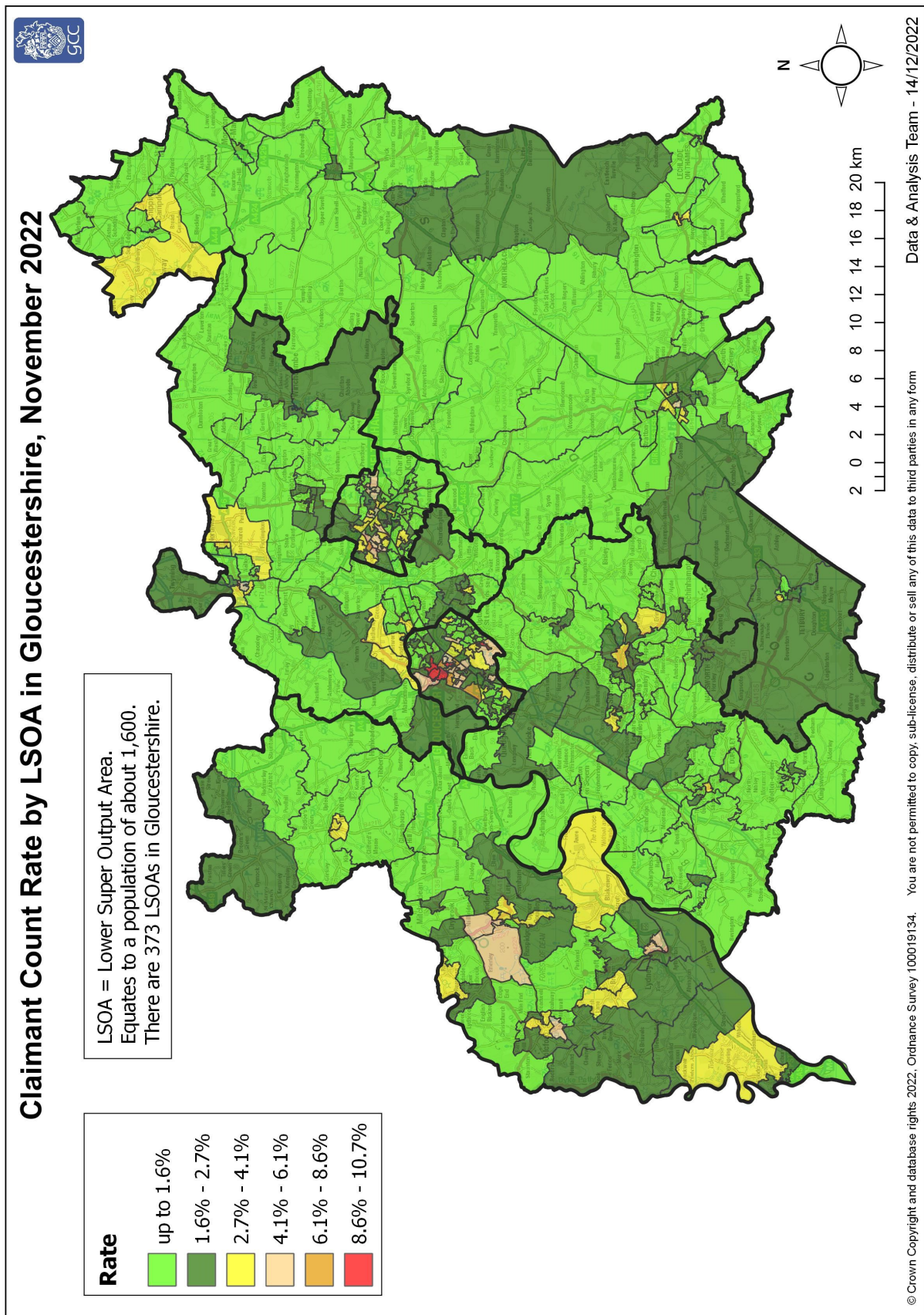
District	Ward	Rate	Rank*
Tewkesbury	Cleeve Hill	0.9	4
Tewkesbury	Churchdown Brookfield with Hucclecote	1.3	33
Tewkesbury	Tewkesbury East	1.3	33
Tewkesbury	Highnam with Haw Bridge	1.5	42
Tewkesbury	Badgeworth	1.6	52
Tewkesbury	Cleeve Grange	1.6	52
Tewkesbury	Cleeve West	1.6	52
Tewkesbury	Churchdown St John's	1.7	60
Tewkesbury	Severn Vale North	1.7	60
Tewkesbury	Tewkesbury North & Twynning	1.7	60
Tewkesbury	Cleeve St Michael's	1.9	75
Tewkesbury	Winchcombe	1.9	75
Tewkesbury	Brockworth West	2.0	81
Tewkesbury	Isbourne	2.0	81
Tewkesbury	Severn Vale South	2.0	81
Tewkesbury	Shurdington	2.2	95
Tewkesbury	Innsworth	2.3	99
Tewkesbury	Northway	2.4	102
Tewkesbury	Brockworth East	2.7	113
Tewkesbury	Tewkesbury South	3.8	125

	lowest 10% of county
	first quartile of county
	second quartile of county
	third quartile of county
	fourth quartile of county
	highest 10% of county

\* 1 = "best" and 138 = "worst"

Table 10 shows overall claimant rates for Tewkesbury Borough wards and their position relative to all wards in Gloucestershire.

## PART 5: MAP SHOWING DISTRIBUTION OF CLAIMANT RATE ACROSS GLOUCESTERSHIRE



These maps currently show the 2011 LSOA boundaries.

Note: We have made changes to the way in which the rates illustrated on the maps are calculated - this means they are not comparable with those shown in previous bulletins.

Rates calculated using Lower Layer Super Output Area Population Estimates Mid-2019, Office for National Statistics

## PART 5: MAP SHOWING DISTRIBUTION OF CLAIMANT RATE ACROSS GLOUCESTERSHIRE

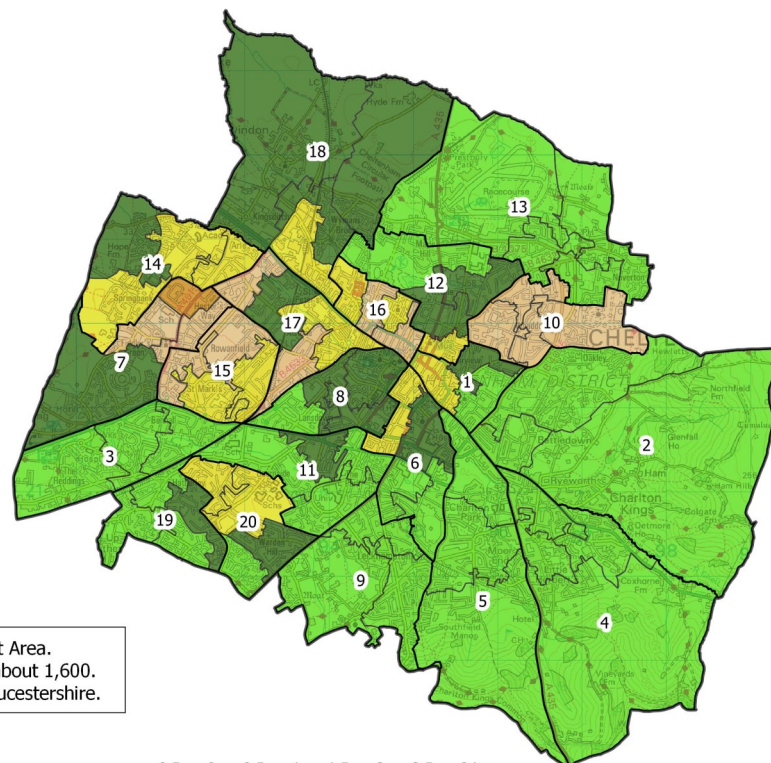
### Claimant Count Rate by LSOA in Cheltenham, November 2022



#### Rate

- up to 1.6%
- 1.6% - 2.7%
- 2.7% - 4.1%
- 4.1% - 6.1%
- 6.1% - 8.6%
- 8.6% - 10.7%

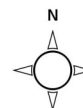
Cheltenham Wards



ID	Ward
1	All Saints
2	Battledown
3	Benhall and The Reddings
4	Charlton Kings
5	Charlton Park
6	College
7	Hesters Way
8	Lansdown
9	Leckhampton
10	Oakley
11	Park
12	Pittville
13	Prestbury
14	Springbank
15	St Mark's
16	St Paul's
17	St Peter's
18	Swindon Village
19	Up Hatherley
20	Warden Hill

LSOA = Lower Super Output Area.  
Equates to a population of about 1,600.  
There are 373 LSOAs in Gloucestershire.

0.5 0 0.5 1 1.5 2 2.5 3 km



© Crown Copyright and database rights 2022, Ordnance Survey 100019134. You are not permitted to copy, sub-license, distribute or sell any of this data to third parties in any form

Data & Analysis Team - 14/12/2022

### Claimant Count Rate by LSOA in Gloucester, November 2022

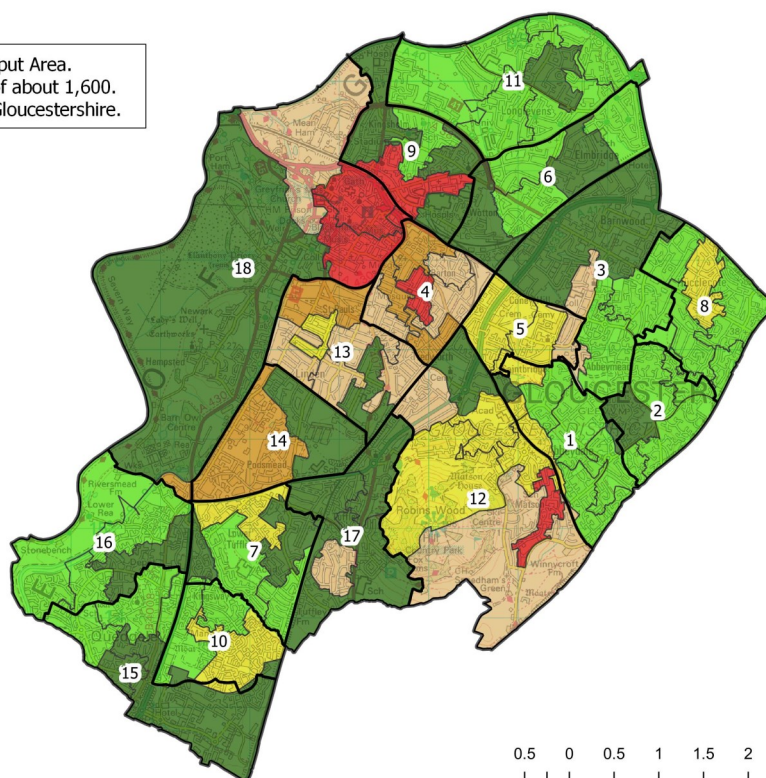


LSOA = Lower Super Output Area.  
Equates to a population of about 1,600.  
There are 373 LSOAs in Gloucestershire.

#### Rate

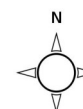
- up to 1.6%
- 1.6% - 2.7%
- 2.7% - 4.1%
- 4.1% - 6.1%
- 6.1% - 8.6%
- 8.6% - 10.7%

Gloucester Wards



ID	Ward
1	Abbeyle
2	Abbeyle
3	Barnwood
4	Barton and Tredworth
5	Coney Hill
6	Elmbridge
7	Grange
8	Hucclecote
9	Kingsholm and Wotton
10	Kingsway
11	Longlevens
12	Matson and Robinswood
13	Moreland
14	Podsmead
15	Quedgeley Fieldcourt
16	Quedgeley Severn Vale
17	Tuffley
18	Westgate

0.5 0 0.5 1 1.5 2 2.5 3 km



© Crown Copyright and database rights 2022, Ordnance Survey 100019134. You are not permitted to copy, sub-license, distribute or sell any of this data to third parties in any form

Data & Analysis Team - 14/12/2022

These maps currently show the 2011 LSOA boundaries.

Note: We have made changes to the way in which the rates illustrated on the maps are calculated - this means they are not comparable with those shown in previous bulletins.

Rates calculated using Lower Layer Super Output Area Population Estimates Mid-2019, Office for National Statistics

## PART 6: YOUTH UNEMPLOYMENT(18-24 year olds)

### Youth Claimant Rate and Claimant Count

Figure 15: Claimant Count for Gloucestershire over the past year

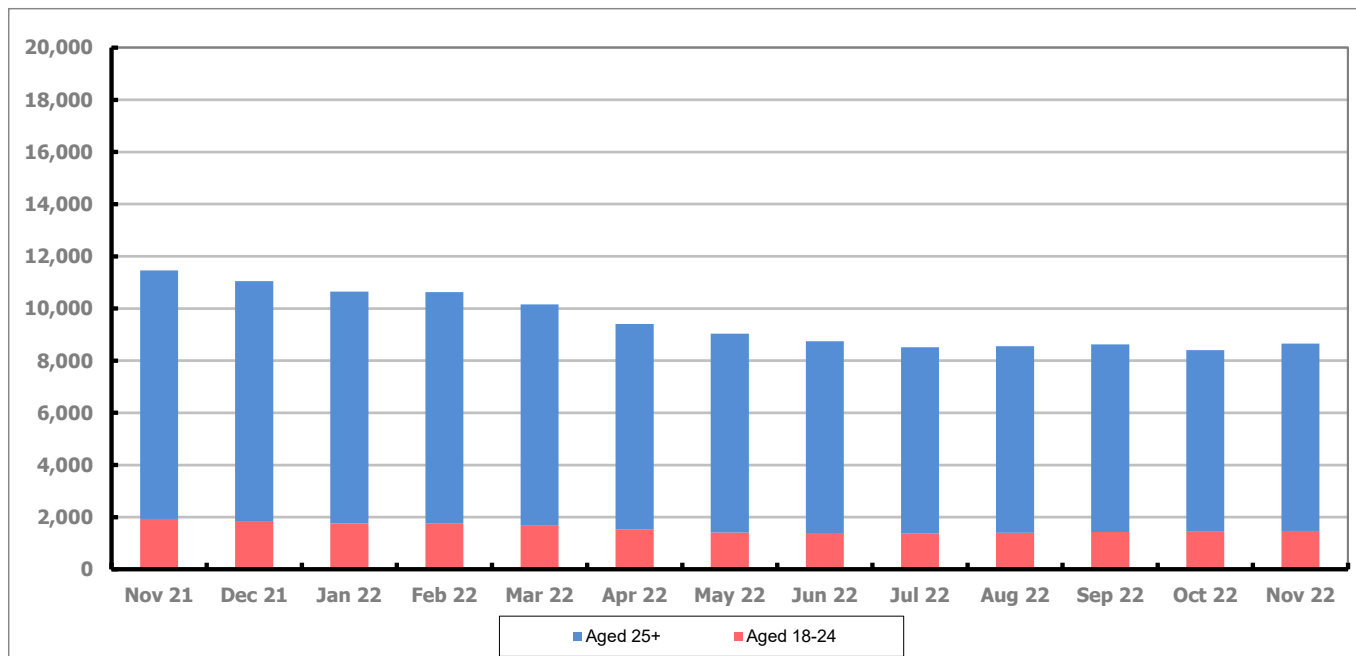


Figure 15 shows that in November 2022, 1,475 people aged 18-24 were claiming Job Seekers Allowance and Universal Credit who were not in work in Gloucestershire, this represents 17.0% of total working age claimants.

## PART 7: YOUNG PEOPLE NOT IN EDUCATION, EMPLOYMENT OR TRAINING (NEET) IN GLOUCESTERSHIRE

Data provided by Gloucestershire Youth Support Team on the situation of young people (16-18) in Gloucestershire who are not in education, employment or formal training.

Gloucestershire Youth Support Team is required to report performance on the Academic Year 12 and 13 (16/17 age) against nationally defined criteria for counting the NEET group to the Department for Education (DfE) on a monthly basis. The NEET group includes young people actively seeking education, employment or training as well as those young people who are either not yet ready or who are unable to access these opportunities because of their personal circumstances. The figures quoted below include young people in both of these categories.

November 2022

### Academic Year 12-13 Summary

	NEET	Cohort	%
Cheltenham	52	2135	2.44%
Cotswold	33	1687	1.96%
Forest	58	1721	3.37%
Gloucester	134	3141	4.27%
Stroud	44	2639	1.67%
Tewkesbury	53	1993	2.66%
Total	374	13316	2.81%

### 16-18 Age Summary

	NEET	Cohort	%
Cheltenham	68	2859	2.38%
Cotswold	39	2244	1.74%
Forest	81	2289	3.54%
Gloucester	171	4112	4.16%
Stroud	58	3502	1.66%
Tewkesbury	63	2660	2.37%
Total	480	17666	2.72%

16-18 Adjust NEET*	2.90%
--------------------	-------

Monthly Change	55	-48	0.42%
Previous month	319	13364	2.39%

Monthly Change	36	-1145	0.36%
Previous month	444	18811	2.36%

The academic year 12-13 group contains a proportion of young people who turn 18 in the academic year but were 17 on the 31<sup>st</sup> August the previous academic year so are entitled to learning through RPA (raising participation age).

Please note all figures quoted above are subject to change before the submission date to the DfE which usually happens in the second or third week of the month for the previous month.

If you would like to receive any further information on Gloucestershire's NEET strategy, then please contact [Lynne.Speak@Prospects.co.uk](mailto:Lynne.Speak@Prospects.co.uk) or telephone 07900 391182.

(\*) Adjustment includes a proportion of young people aged 16-18 whose outcomes are not-known to Gloucestershire Youth Support Team.