

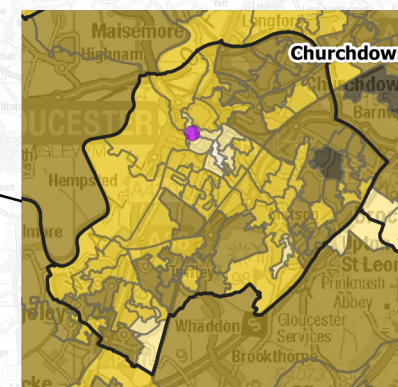
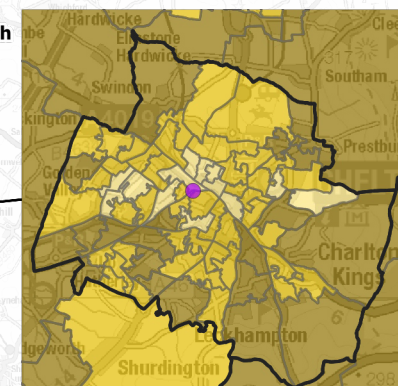
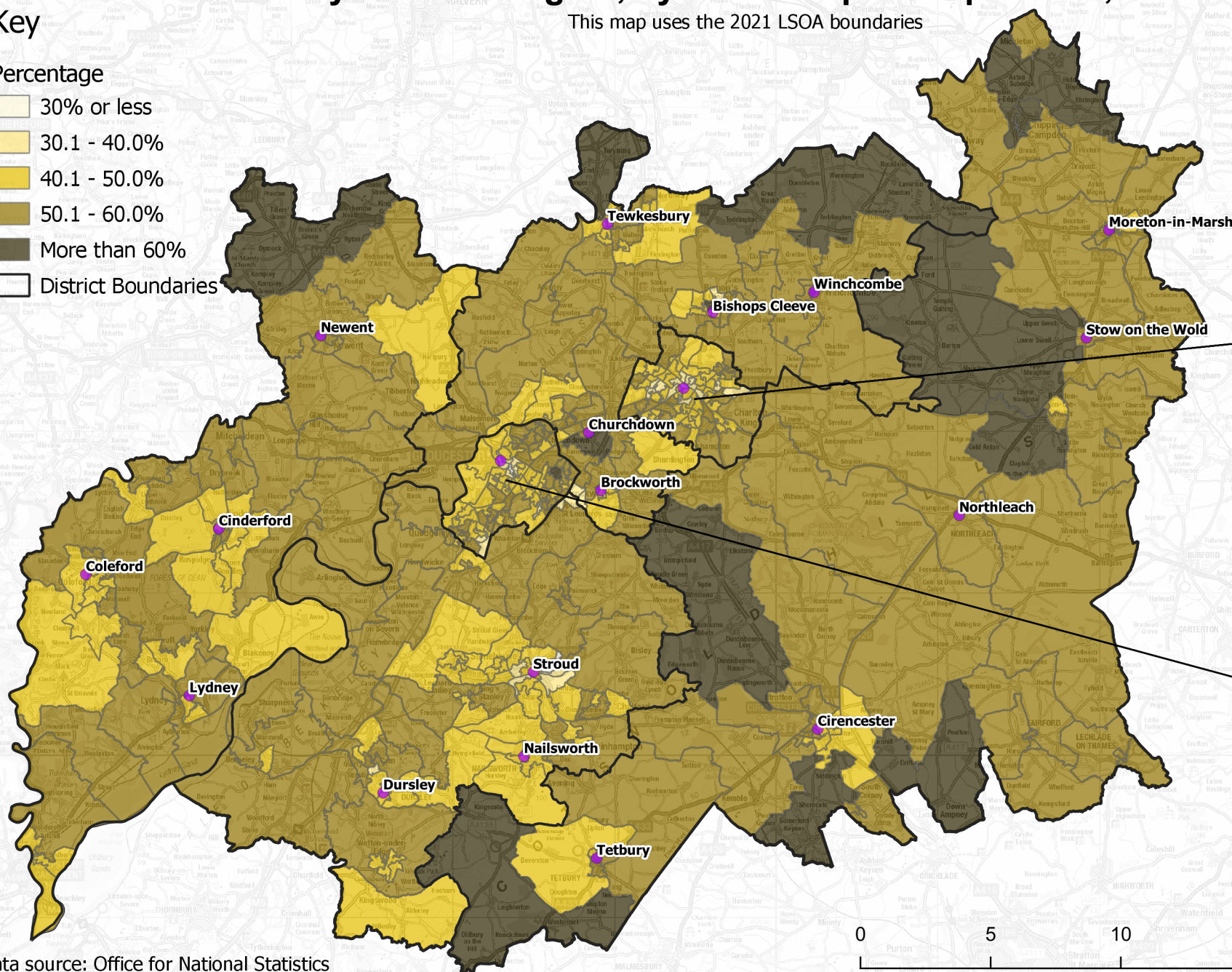
The proportion of residents living in Gloucestershire who have identified Christianity as their religion, by Lower Super Output Area, Census 2021

This map uses the 2021 LSOA boundaries

Key

Percentage

- 30% or less
- 30.1 - 40.0%
- 40.1 - 50.0%
- 50.1 - 60.0%
- More than 60%
- District Boundaries



Data source: Office for National Statistics