

# Top-up products

The product list below includes details of the items that the parish / town council or community group can buy through Community Top-up. This list will grow as the Big Community Offer for highways develops. All prices exclude VAT, are correct at the time of issue but are subject to change.



## Winter maintenance

### Hand salt Spreader

A hand salt spreader could be ideal for your community footways once you have cleared them of snow - **£200 each**



## Environmental

### Weed spraying

Weeds a problem in your community? You can purchase weed spraying through the Community Top up. A trained contractor can spray those weeds which are causing problems and are unsightly - **£500 per day\***

### Weed ripping

Weeds in the channels or on the kerb line can be removed by mechanical weed ripping - **£550 per day**



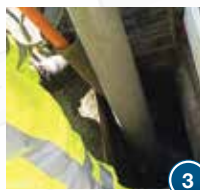
## Drainage



1



2



3



4

1. Enhanced gully emptying **£500\***

2. CCTV Surveys **£620\***

3. Cleansing drains by jetting **£1100**

4. Root cutting in drains **£835\***

\* Pays for gang, vehicle and equipment needed for the job. Prices are based on day-rates but if we can co-ordinate requests from communities the cost could be shared.

# Transport monitoring / surveys



## Video Traffic Count.

Prices assume 12hrs 7am-7pm. Class / Volume

<b>2-way</b> (single carriageway)	<b>£358</b>
<b>2-way</b> (dual carriageway)	<b>£370</b>
<b>T junction</b> (single lane arms)	<b>£510</b>
<b>T junction</b> (dual arms)	<b>£530</b>
<b>Crossroads</b>	<b>£530</b>
<b>Number of roundabout arms increases price</b>	<b>£600 - £1100</b>

## Pedestrian/ cycle counts.

Price assumes 12hrs 7am-7pm.

<b>1 or 2 zones</b>	<b>£358</b>
---------------------	-------------

## Tube / radar surveys - class / volume / speed.

Prices assume 1 week survey duration.

<b>1 site</b>	<b>£160</b>
<b>2 sites</b>	<b>£258</b>
<b>3 sites</b>	<b>£352</b>
<b>4 sites</b>	<b>£448</b>

These prices are guideline costs for typical surveys we are asked to arrange. We will sometimes need to provide you with a customised quote depending on the circumstances but hopefully this should give you an idea of what you can expect. If you want to arrange something which is customised to a particular project or situation, please contact us to discuss further and see what options are available.

## How to buy

If you would like to purchase any of the items from our Community Top-up list please contact your Gloucestershire County Council Local Highways Manager.

**e: [highways@gloucestershire.gov.uk](mailto:highways@gloucestershire.gov.uk)**

**t: 08000 514 514**

If there is something not on the Highways list that your community would like to purchase please contact us to discuss further.