

Unemployment Bulletin

Issue 199 February 2025

Contents

Part 1: Summary A summary of unemployment data at district, County, regional and national level	1
Part 2: County Unemployment figures for the County compared to the South West and the rest of the UK	3
Part 3: Districts A comparative break down of unemployment figures by district	4
Part 4: Wards Further breakdown of unemployment figures by ward:	
Cheltenham	6
Cotswolds	8
Forest of Dean	10
Gloucester	12
Stroud	14
Tewkesbury	16
Part 5: Map Distribution of claimant rate across Gloucestershire	18
Part 6: Youth Unemployment Unemployment data for the 18-24 year old age group	20
Part 7: Young People Data about Young People Not in Education, Employment or Training (NEET)	21

The Claimant Count is a measure of the number of people who are unemployed and claiming benefits. From 1996 until the recent introduction of Universal Credit, this was based on the number of people claiming Jobseeker's Allowance. However, since its introduction some unemployment benefit claimants will be claiming Universal Credit instead. **To reflect this change, the Claimant Count has been expanded to include people claiming Jobseeker's Allowance plus those who claim Universal Credit and who are searching for work.**

Since 2016 Gloucestershire has been transitioning to full Universal Credit with the process due to be completed in 2025. This means a broader span of claimants will be required to look for work than under Jobseekers Allowance. As more people are brought within the coverage of Universal Credit, the Claimant Count is set to rise. In addition, in May 2024 the DWP rolled out an increase in the administrative earnings threshold (AET) for full work search conditionality. This means a cohort of claimants who are in work but on an income below the AET will now be required to search for work. This change is likely to affect around 180,000 claimants across the country over around 6 months, increasing the Claimant Count over that time. More information about Universal Credit please see the [ONS website](#).

INTRODUCTION

The Unemployment Bulletin provides a monthly update on unemployment data for Gloucestershire, the South West region and the United Kingdom. It is produced by the Data, Analysis & Insights Team in the County Council's Planning, Performance and Insight function. The data are sourced from the Office for National Statistics via Nomis (www.nomis.co.uk). All data are rounded to the nearest 5 and may not precisely add to the sum of the number of people claiming JSA, and the number of people claiming Universal Credit required to seek work, due to independent rounding.

PART 1: SUMMARY

The claimant rate in Gloucestershire increased to 2.8% in February 2025. The South West rate increased to 2.9%, whilst the UK rate increased to 4.2%. Gloucestershire's rate was 0.1% lower than the South West average of 2.9%, and 1.4% lower than the UK average of 4.2%.

The claimant count in Gloucestershire in February 2025 increased by 645 people. The amount of people claiming in February was 6.2% higher than the number in January. This compares to a 6.2% increase in the South West, and a 5.1% increase in the UK.

Produced by:

Data, Analysis & Insights Team
Planning, Performance and Insight
Gloucestershire County Council
March 2025

DISTRICTS AT A GLANCE

At a glance unemployment information grouped by district. Includes:

Claimant count: Total number of people claiming Job Seekers Allowance and Universal Credit who are not in work in February 2025

Claimant count change on previous month: How much larger/smaller February's claimant count is compared to January expressed as a %

Claimant rate: The % of working age population claiming Job Seekers Allowance and Universal Credit who are not in work in February 2025

Highest claiming ward: The ward with the highest claim count in that district and the rate

CHELTEMHAM BOROUGH

Claimant count:	2,245
Claimant count change on previous month:	7.4%
Claimant rate:	3.0%
Highest claiming ward(s)	Oakley (6.5%)

GLOUCESTER CITY

Claimant count:	3,270
Claimant count change on previous month:	4.3%
Claimant rate:	3.8%
Highest claiming ward(s)	Westgate (7.9%)

COTSWOLD DISTRICT

Claimant count:	1,110
Claimant count change on previous month:	11.0%
Claimant rate:	2.1%
Highest claiming ward(s)	Watermoor (4.1%)

STROUD DISTRICT

Claimant count:	1,585
Claimant count change on previous month:	6.7%
Claimant rate:	2.1%
Highest claiming ward(s)	Stroud Central (4.2%)

FOREST OF DEAN

Claimant count:	1,495
Claimant count change on previous month:	4.5%
Claimant rate:	2.9%
Highest claiming ward(s)	Cinderford West (5.5%)

TEWKESBURY BOROUGH

Claimant count:	1,405
Claimant count change on previous month:	6.0%
Claimant rate:	2.4%
Highest claiming ward(s)	Tewkesbury South (4.1%)

PART 2: UK, SW AND GLOUCESTERSHIRE INDICATORS

The unemployment situation in Gloucestershire compared to the South West and the UK.

Claimant Rate

Figure 1: Claimant Rate for Gloucestershire, the South West and UK over the past year

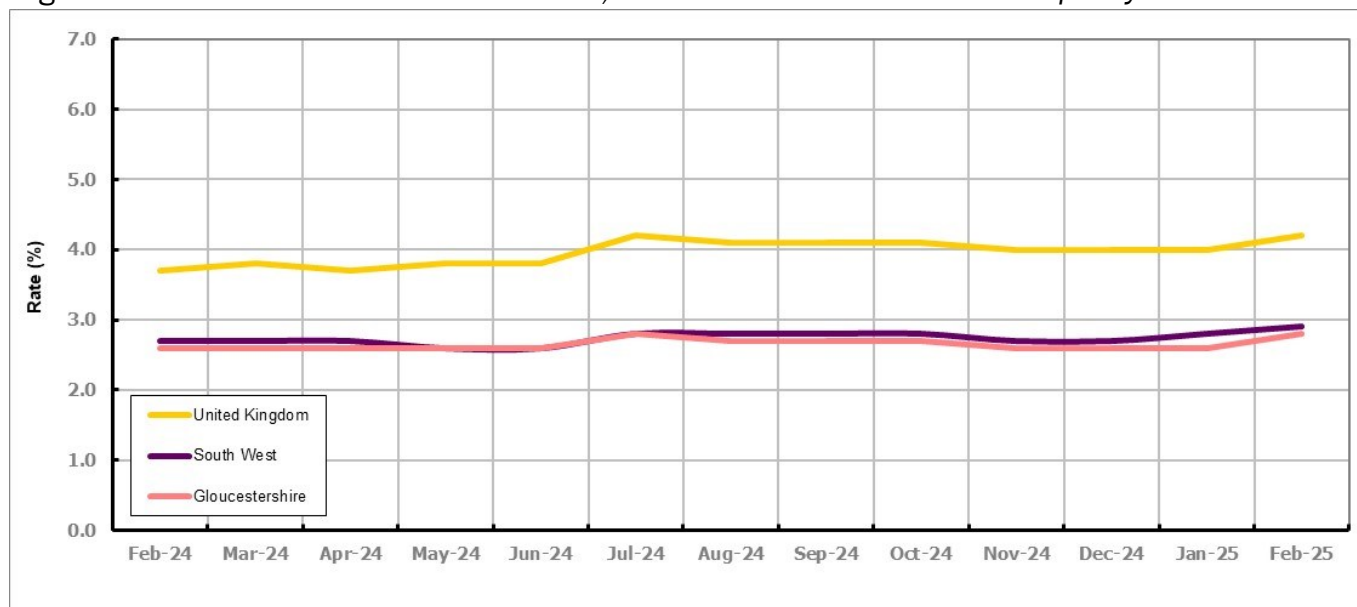


Figure 1 shows the claimant rate for Gloucestershire at 2.8% in February 2025. The Gloucestershire rate has been lower than the South West average since November 2015, with the exception of April and May 2016 and, more recently, November 2023 when it was the same. On average, it has been approximately 1.3% lower than the UK average since the same month of the previous year.

Claimant Count

Table 1: Analysis of UK, South West and Gloucestershire Claimant Counts

Area	Claimant Count in February 2025	% change on January 2025	Consecutive months increasing
UK	1,783,490	5.1%	0
South West	102,850	6.2%	1
Gloucestershire	11,110	6.2%	1

Table 1 shows that in February 2025, the number of claimants in Gloucestershire was 6.2% higher than the number in January 2025.

PART 3: LOCAL AUTHORITY DISTRICT ANALYSIS

Claimant Rate and Claimant Count

Figure 2: Claimant Rate (%) across Gloucestershire - February 2025

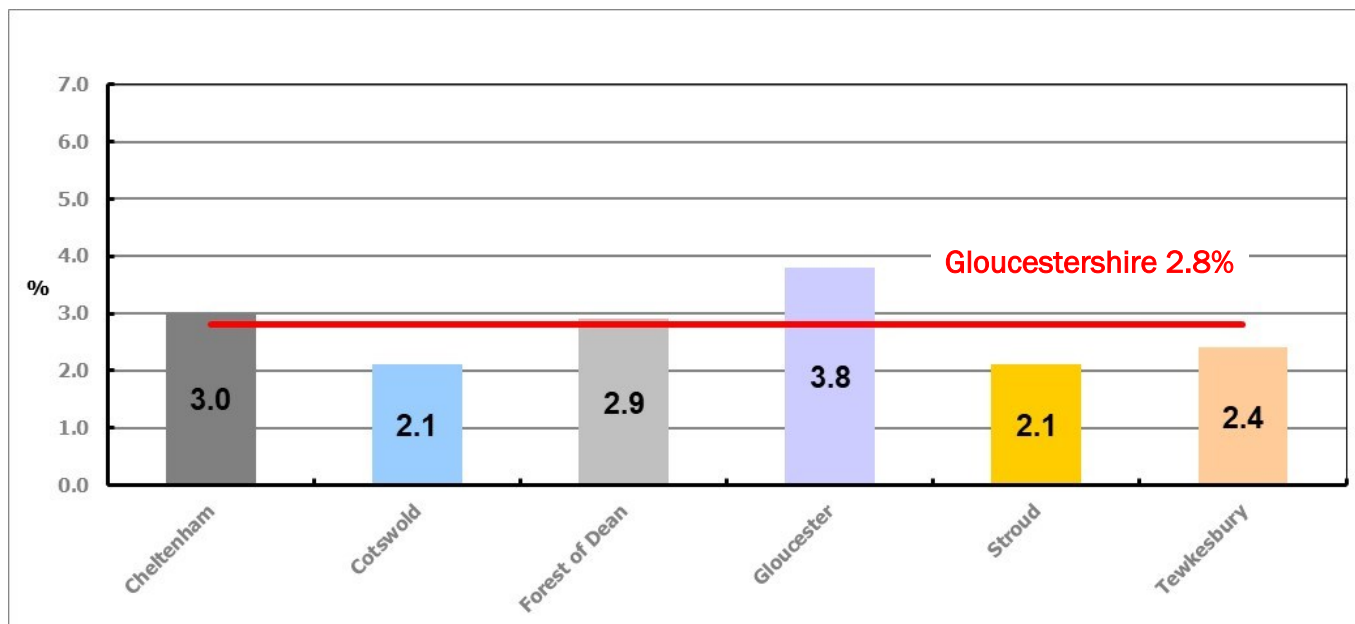


Figure 2 shows the claimant rate for February 2025 in Gloucestershire. Between January and February 2025 the rate increased in all districts.

Table 2: Analysis of Gloucestershire and District Claimant Counts

Total	Feb 25 Number	Feb 25 Rate	Jan 25 Number	Jan 25 Rate	Monthly change	% monthly change	Monthly change of rate
Gloucestershire	11,110	2.8	10,465	2.6	645	6.2%	0.2
Cheltenham	2,245	3.0	2,090	2.8	155	7.4%	0.2
Cotswold	1,110	2.1	1,000	1.9	110	11.0%	0.2
Forest of Dean	1,495	2.9	1,430	2.7	65	4.5%	0.2
Gloucester	3,270	3.8	3,135	3.6	135	4.3%	0.2
Stroud	1,585	2.1	1,485	2.0	100	6.7%	0.1
Tewkesbury	1,405	2.4	1,325	2.3	80	6.0%	0.1

Table 2 shows the change in the claimant count in February 2025 compared to January. All districts saw an increase in the number of claimants.

Table 3: Analysis of Male Gloucestershire and District Claimant Counts

Male	Feb 25 Number	Feb 25 Rate	Jan 25 Number	Jan 25 Rate	Monthly change	% monthly change	Monthly change of rate
Gloucestershire	6,005	3.1	5,660	2.9	345	6.1%	0.2
Cheltenham	1,240	3.3	1,165	3.1	75	6.4%	0.2
Cotswold	550	2.2	510	2.0	40	7.8%	0.2
Forest of Dean	810	3.1	760	2.9	50	6.6%	0.2
Gloucester	1,895	4.4	1,820	4.2	75	4.1%	0.2
Stroud	785	2.2	735	2.0	50	6.8%	0.2
Tewkesbury	725	2.6	675	2.4	50	7.4%	0.2

Table 3 shows the change in the male claimant count in February 2025 compared to January. All districts saw an increase in the number of claimants.

Table 4: Analysis of Female Gloucestershire and District Claimant Counts

Female	Feb 25 Number	Feb 25 Rate	Jan 25 Number	Jan 25 Rate	Monthly change	% monthly change	Monthly change of rate
Gloucestershire	5,110	2.5	4,805	2.4	305	6.3%	0.1
Cheltenham	1,005	2.7	925	2.5	80	8.6%	0.2
Cotswold	560	2.1	490	1.8	70	14.3%	0.3
Forest of Dean	690	2.6	670	2.5	20	3.0%	0.1
Gloucester	1,380	3.2	1,315	3.1	65	4.9%	0.1
Stroud	800	2.1	750	2.0	50	6.7%	0.1
Tewkesbury	680	2.3	655	2.2	25	3.8%	0.1

Table 4 shows the change in the female claimant count in February 2025 compared to January. All districts saw an increase in the number of claimants.

PART 4: LOCAL AUTHORITY DISTRICT AND WARD ANALYSIS

This section covers the six districts and a comparison of their constituent wards.

4.1 Cheltenham Borough

Claimant Rate and Claimant Count

Figure 3: Cheltenham Borough claimant rate over the last year

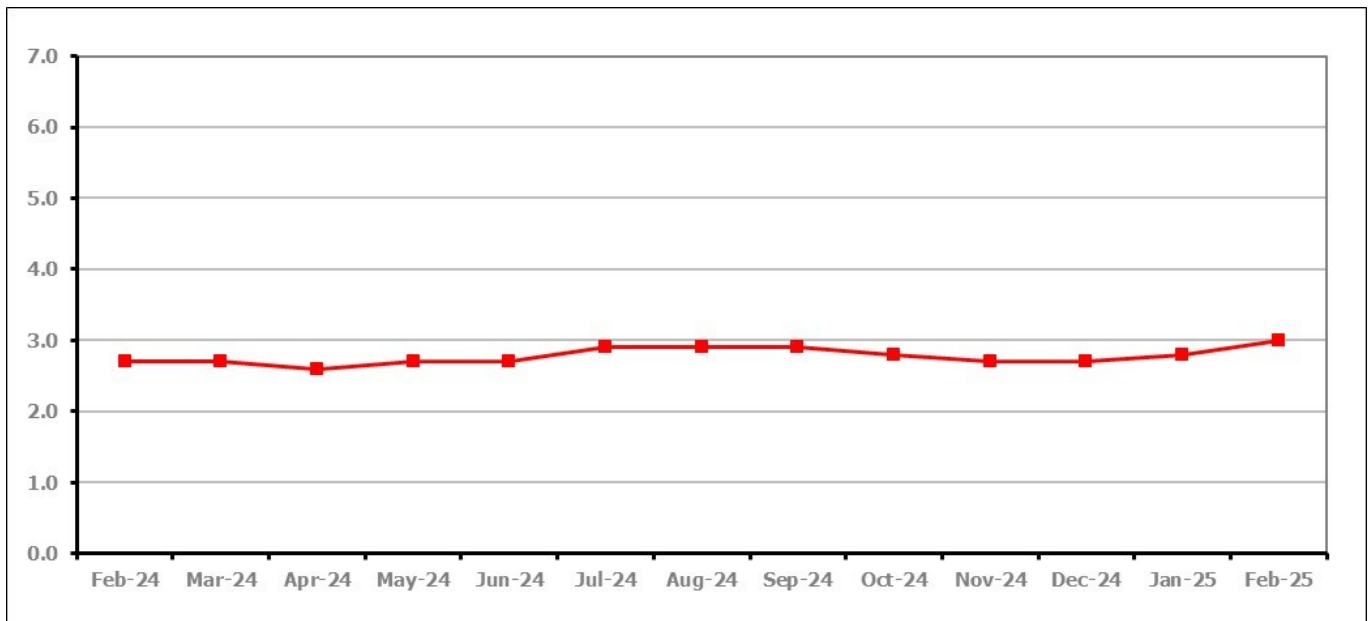


Figure 3 shows the claimant rate in Cheltenham increased to 3.0% in February 2025.

Figure 4: Claimant rates across Cheltenham Borough wards - February 2025

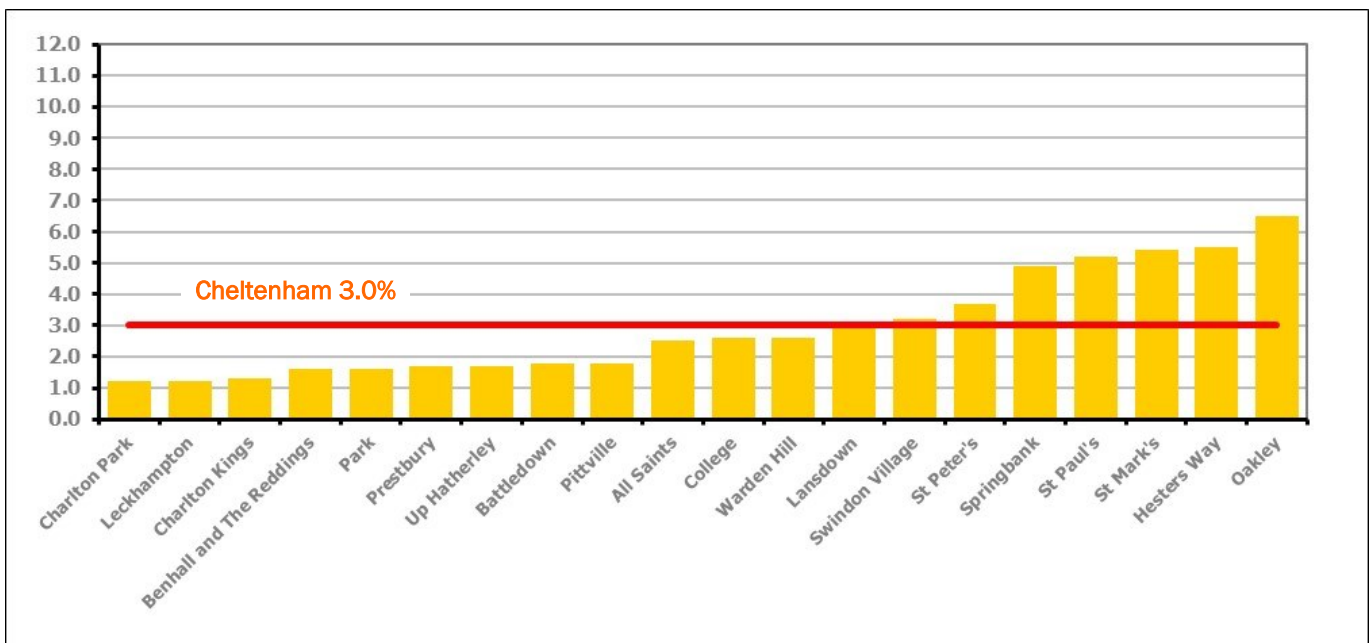


Figure 4 shows the claimant rates for Cheltenham Borough wards. The red line represents the average claimant rate across the Borough of 3.0%. Seven wards lie above the average.

PART 4: LOCAL AUTHORITY DISTRICT AND WARD ANALYSIS

4.1 Cheltenham Borough continued...

Table 5: Analysis of Claimant Count at Cheltenham Borough ward level - February 2025

District	Ward	Rate	Rank*
Cheltenham	Charlton Park	1.2	4
Cheltenham	Leckhampton	1.2	4
Cheltenham	Charlton Kings	1.3	6
Cheltenham	Benhall and The Reddings	1.6	19
Cheltenham	Park	1.6	19
Cheltenham	Prestbury	1.7	25
Cheltenham	Up Hatherley	1.7	25
Cheltenham	Battledown	1.8	34
Cheltenham	Pittville	1.8	34
Cheltenham	All Saints	2.5	78
Cheltenham	College	2.6	85
Cheltenham	Warden Hill	2.6	85
Cheltenham	Lansdown	2.9	101
Cheltenham	Swindon Village	3.2	110
Cheltenham	St Peter's	3.7	116
Cheltenham	Springbank	4.9	126
Cheltenham	St Paul's	5.2	128
Cheltenham	St Mark's	5.4	131
Cheltenham	Hesters Way	5.5	132
Cheltenham	Oakley	6.5	136

	lowest 10% of county
	first quartile of county
	second quartile of county
	third quartile of county
	fourth quartile of county
	highest 10% of county

* 1 = "best" and 138 = "worst"

Table 5 shows overall claimant rates for Cheltenham Borough wards and their position relative to all wards in Gloucestershire.

PART 4: LOCAL AUTHORITY DISTRICT AND WARD ANALYSIS

4.2 Cotswold District

Claimant Rate and Claimant Count

Figure 5: Cotswold District claimant rate over the last year

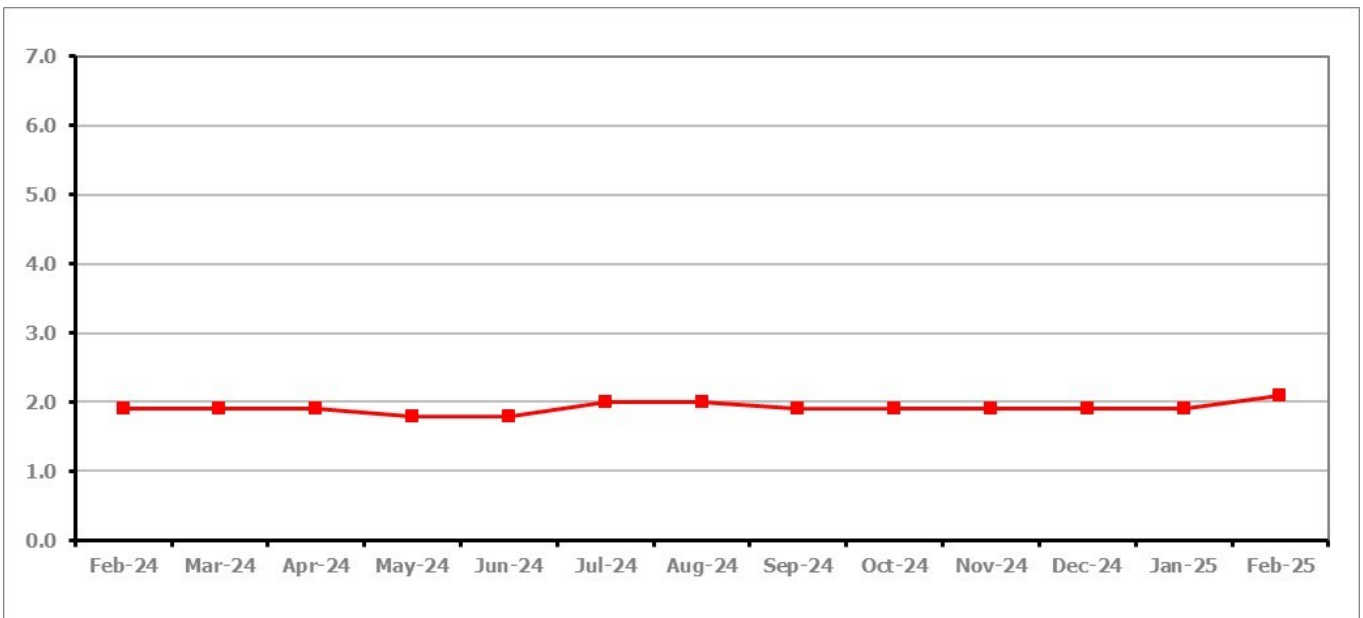


Figure 5 shows the claimant rate in Cotswold District increased to 2.1% in February 2025.

Figure 6: Claimant rates across Cotswold District wards – February 2025

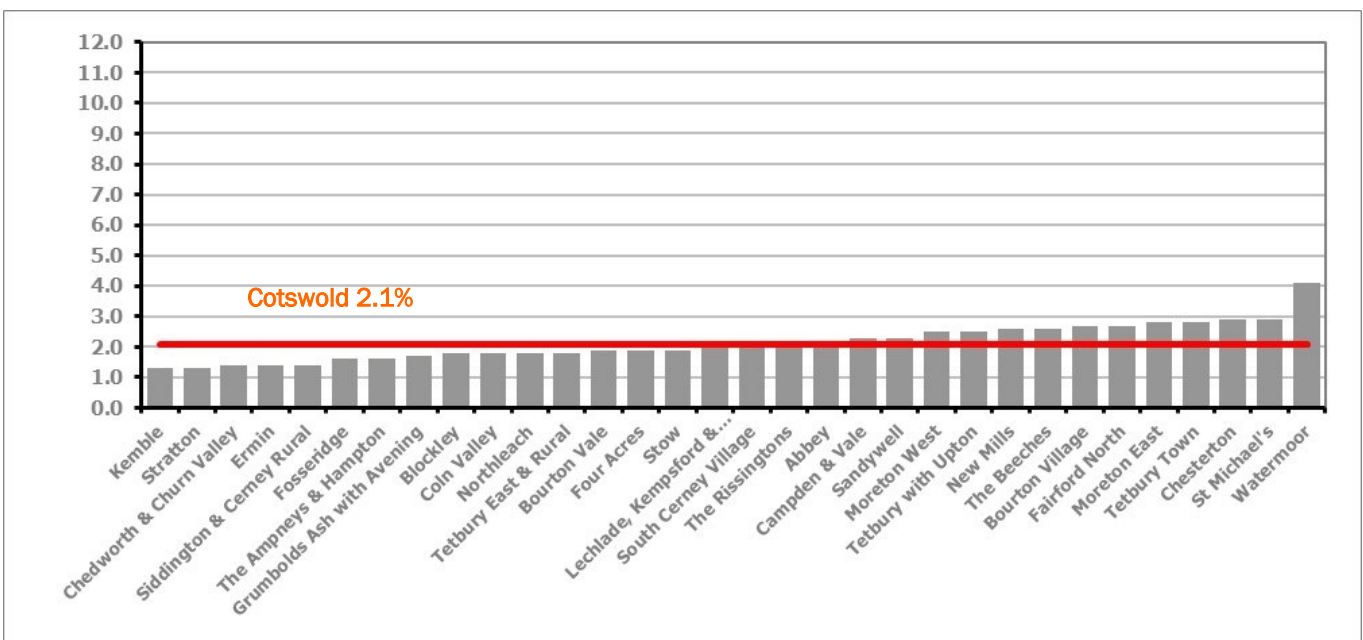


Figure 6 shows the claimant rates for Cotswold District wards. The red line represents the average claimant rate across the District of 2.1%. Fourteen wards lie above the average.

PART 4: LOCAL AUTHORITY DISTRICT AND WARD ANALYSIS

4.2 Cotswold District continued...

Table 6: Analysis of Claimant Count at Cotswold District ward level - February 2025

District	Ward	Rate	Rank*
Cotswold	Kemble	1.3	6
Cotswold	Stratton	1.3	6
Cotswold	Chedworth & Churn Valley	1.4	10
Cotswold	Ermin	1.4	10
Cotswold	Siddington & Cerney Rural	1.4	10
Cotswold	Fosseridge	1.6	19
Cotswold	The Ampneys & Hampton	1.6	19
Cotswold	Grumbolds Ash with Avening	1.7	25
Cotswold	Blockley	1.8	34
Cotswold	Coln Valley	1.8	34
Cotswold	Northleach	1.8	34
Cotswold	Tetbury East & Rural	1.8	34
Cotswold	Bourton Vale	1.9	43
Cotswold	Four Acres	1.9	43
Cotswold	Stow	1.9	43
Cotswold	Lechlade, Kempsford & Fairford South	2.0	51
Cotswold	South Cerney Village	2.0	51
Cotswold	The Rissingtons	2.0	51
Cotswold	Abbey	2.2	63
Cotswold	Campden & Vale	2.3	68
Cotswold	Sandywell	2.3	68
Cotswold	Moreton West	2.5	78
Cotswold	Tetbury with Upton	2.5	78
Cotswold	New Mills	2.6	85
Cotswold	The Beeches	2.6	85
Cotswold	Bourton Village	2.7	91
Cotswold	Fairford North	2.7	91
Cotswold	Moreton East	2.8	95
Cotswold	Tetbury Town	2.8	95
Cotswold	Chesterton	2.9	101
Cotswold	St Michael's	2.9	101
Cotswold	Watermoor	4.1	121

	lowest 10% of county
	first quartile of county
	second quartile of county
	third quartile of county
	fourth quartile of county
	highest 10% of county

* 1 = "best" and 138 = "worst"

Table 6 shows overall claimant rates for Cotswold District wards and their position relative to all wards in Gloucestershire.

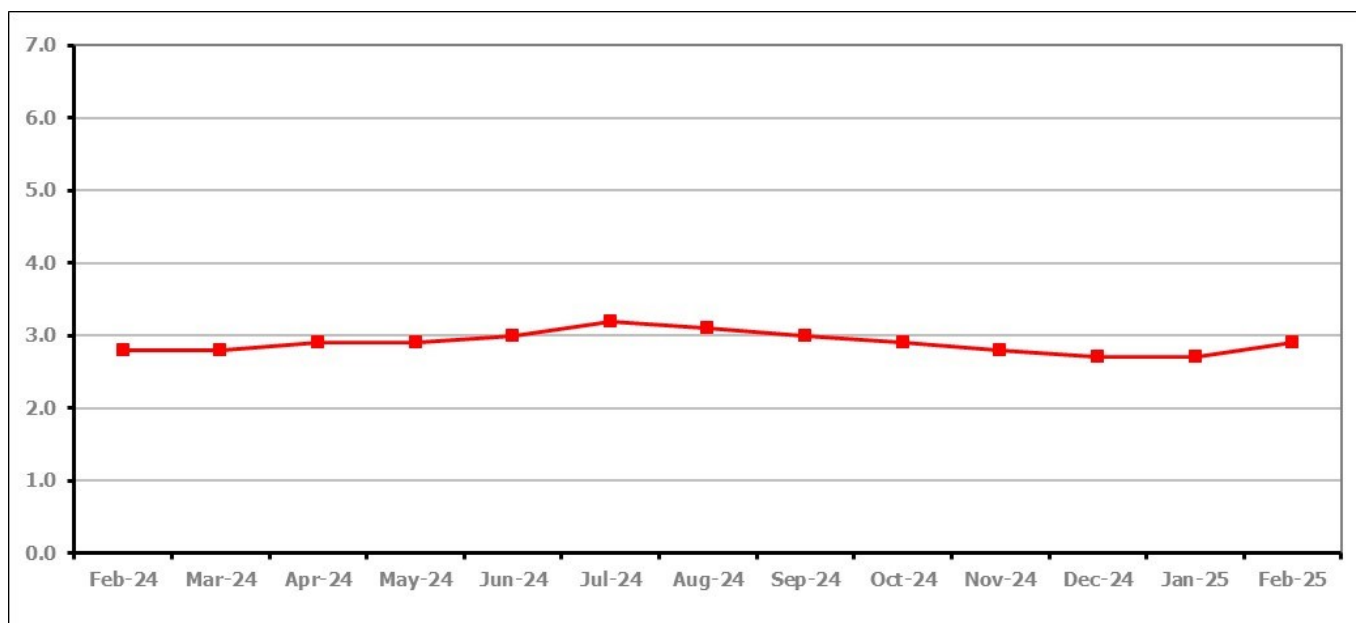
PART 4: LOCAL AUTHORITY DISTRICT AND WARD ANALYSIS**4.3 Forest of Dean District****Claimant Rate and Claimant Count***Figure 7: Forest of Dean District claimant rate over the last year*

Figure 7 shows the claimant rate in the Forest of Dean increased to 2.9% in February 2025.

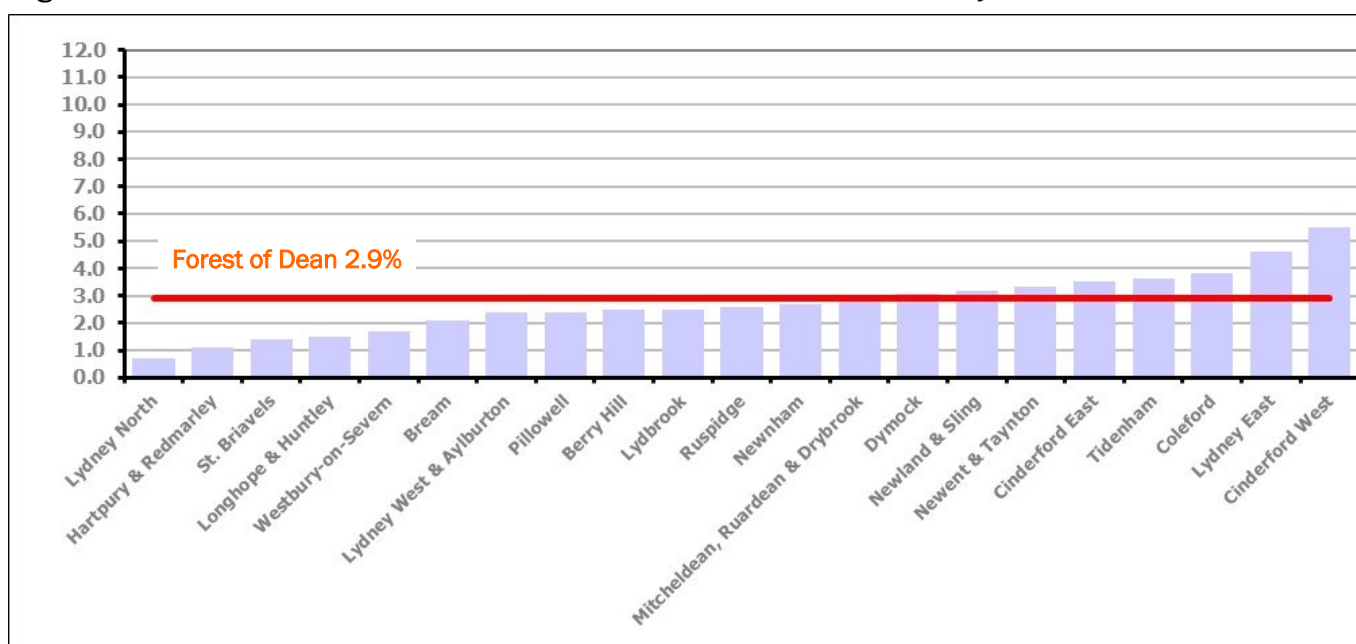
Figure 8: Claimant rates across Forest of Dean District wards – February 2025

Figure 8 shows the claimant rates for the Forest of Dean District wards. The red line represents the average claimant rate across the District of 2.9%. Eight wards lie above the average.

PART 4: LOCAL AUTHORITY DISTRICT AND WARD ANALYSIS**4.3 Forest of Dean District continued...***Table 7: Analysis of Claimant Count at Forest of Dean District ward level - February 2025*

District	Ward	Rate	Rank*
Forest	Lydney North	0.7	1
Forest	Hartpury & Redmarley	1.1	2
Forest	St. Briavels	1.4	10
Forest	Longhope & Huntley	1.5	16
Forest	Westbury-on-Severn	1.7	25
Forest	Bream	2.1	59
Forest	Lydney West & Aylburton	2.4	73
Forest	Pillowell	2.4	73
Forest	Berry Hill	2.5	78
Forest	Lydbrook	2.5	78
Forest	Ruspidge	2.6	85
Forest	Newnham	2.7	91
Forest	Mitcheldean, Ruardean & Drybrook	2.8	95
Forest	Dymock	3.1	108
Forest	Newland & Sling	3.2	110
Forest	Newent & Taynton	3.3	112
Forest	Cinderford East	3.5	113
Forest	Tidenham	3.6	114
Forest	Coleford	3.8	119
Forest	Lydney East	4.6	125
Forest	Cinderford West	5.5	132

	lowest 10% of county
	first quartile of county
	second quartile of county
	third quartile of county
	fourth quartile of county
	highest 10% of county

* 1 = "best" and 138 = "worst"

Table 7 shows overall claimant rates for the Forest of Dean District wards and their position relative to all wards in Gloucestershire.

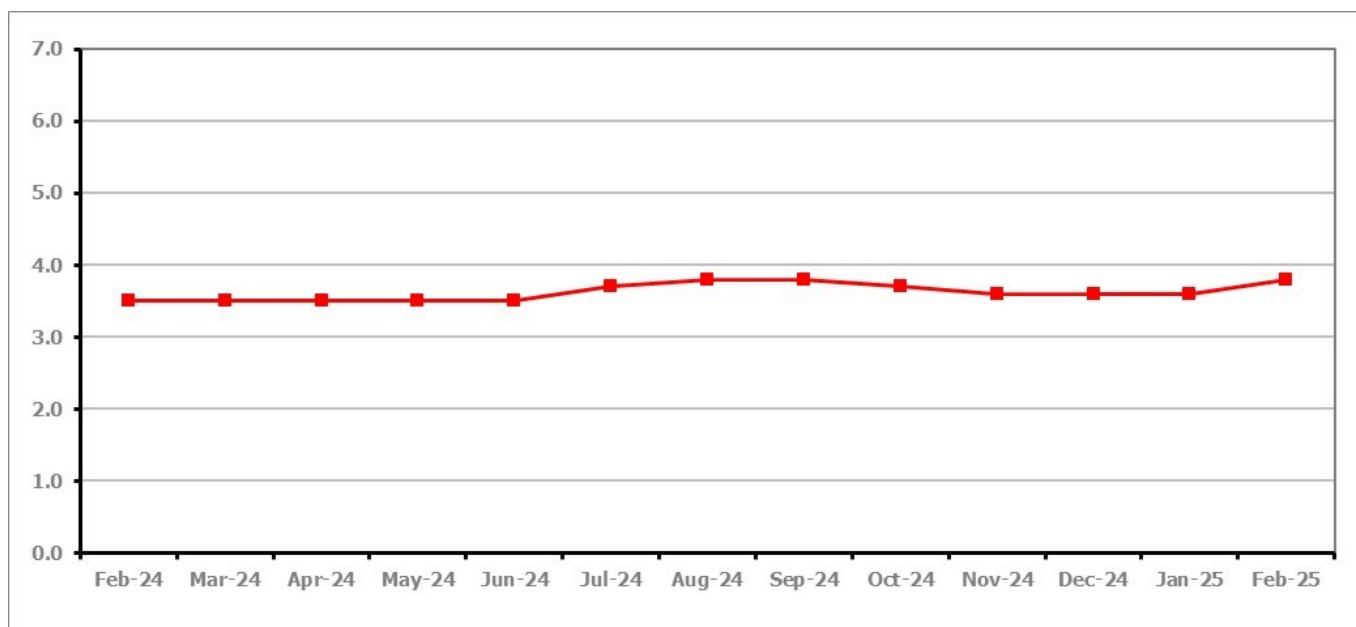
PART 4: LOCAL AUTHORITY DISTRICT AND WARD ANALYSIS**4.4 Gloucester City****Claimant Rate and Claimant Count***Figure 9: Gloucester City claimant rate over the last year*

Figure 9 shows the claimant rate for Gloucester City increased to 3.8% in February 2025.

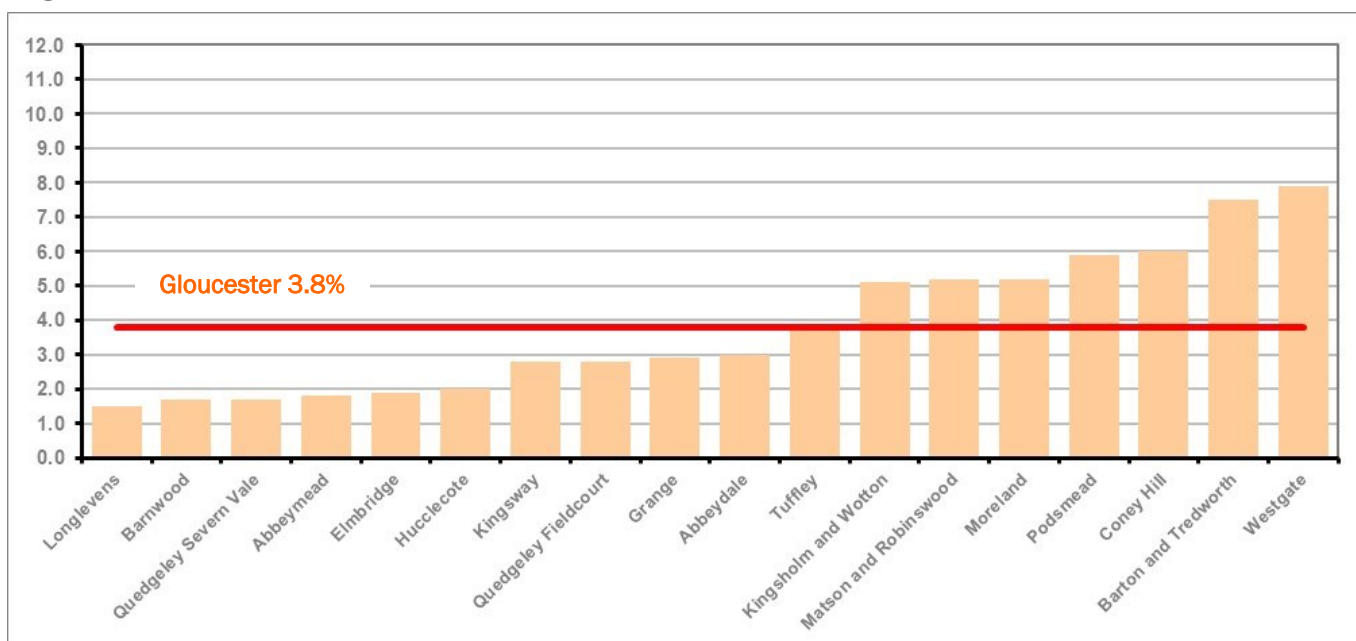
Figure 10: Claimant rates across Gloucester City wards - February 2025

Figure 10 shows the claimant rates for Gloucester City district wards. The red line represents the average claimant rate across the City of 3.8%. Eight wards lie above the average.

PART 4: LOCAL AUTHORITY DISTRICT AND WARD ANALYSIS

4.4 Gloucester City continued...

Table 8: Analysis of Claimant Count at Gloucester City ward level - February 2025

District	Ward	Rate	Rank*
Gloucester	Longlevens	1.5	16
Gloucester	Barnwood	1.7	25
Gloucester	Quedgeley Severn Vale	1.7	25
Gloucester	Abbeymead	1.8	34
Gloucester	Elmbridge	1.9	43
Gloucester	Hucclecote	2.0	51
Gloucester	Kingsway	2.8	95
Gloucester	Quedgeley Fieldcourt	2.8	95
Gloucester	Grange	2.9	101
Gloucester	Abbeydale	3.0	106
Gloucester	Tuffley	3.9	120
Gloucester	Kingsholm and Wotton	5.1	127
Gloucester	Matson and Robinswood	5.2	128
Gloucester	Moreland	5.2	128
Gloucester	Podsmead	5.9	134
Gloucester	Coney Hill	6.0	135
Gloucester	Barton and Tredworth	7.5	137
Gloucester	Westgate	7.9	138

	lowest 10% of county
	first quartile of county
	second quartile of county
	third quartile of county
	fourth quartile of county
	highest 10% of county

* 1 = "best" and 138 = "worst"

Table 8 shows overall claimant rates for Gloucester City wards and their position relative to all wards in Gloucestershire.

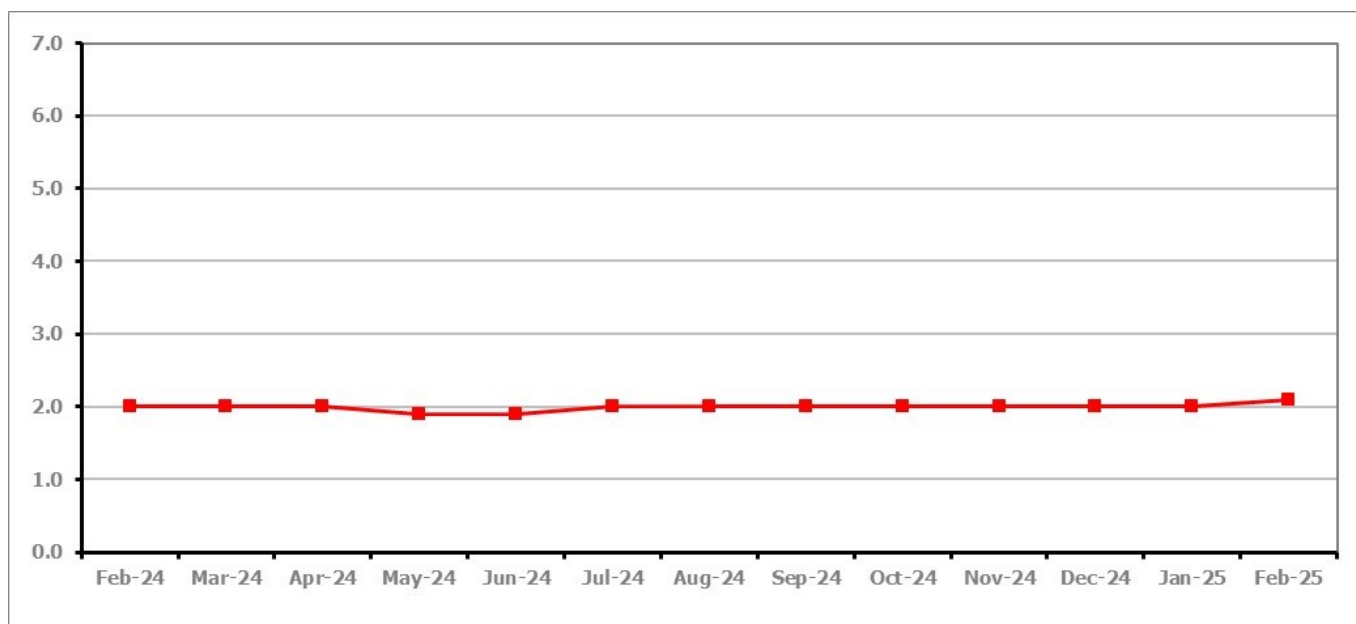
PART 4: LOCAL AUTHORITY DISTRICT AND WARD ANALYSIS**4.5 Stroud District****Claimant Rate and Claimant Count***Figure 11: Stroud District claimant rate over the last year*

Figure 11 shows the claimant rate for Stroud increased to 2.1% in February 2025.

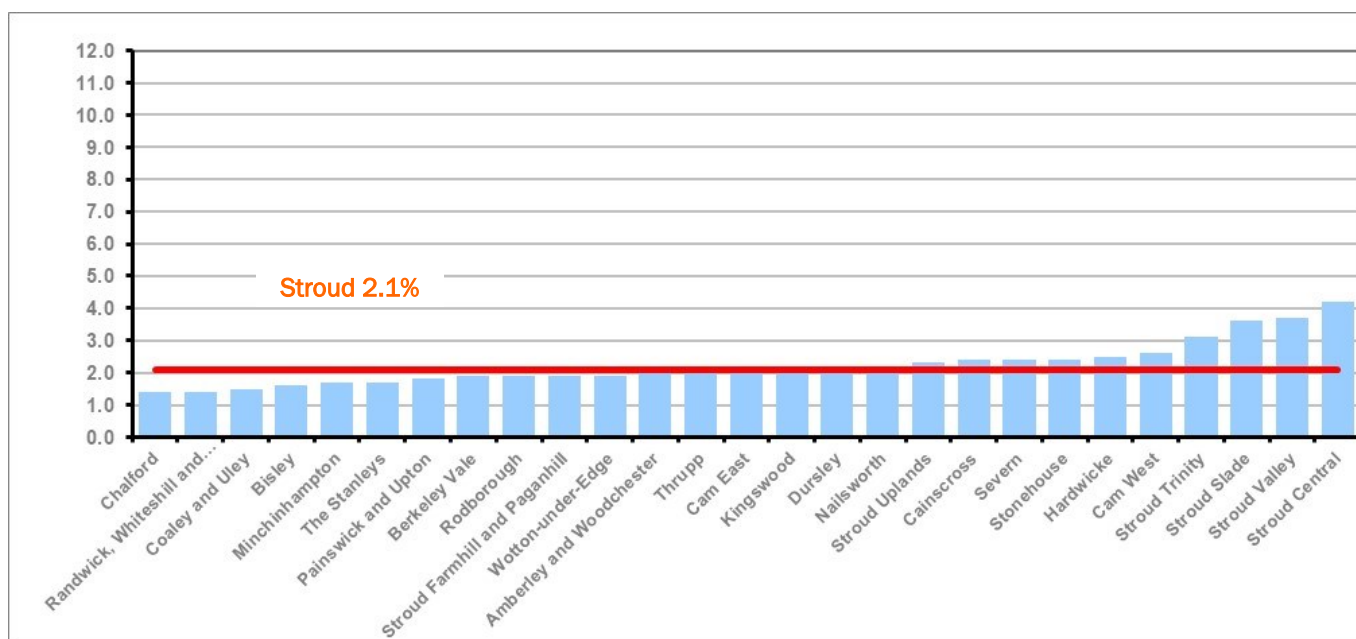
Figure 12: Claimant rates across Stroud District wards - February 2025

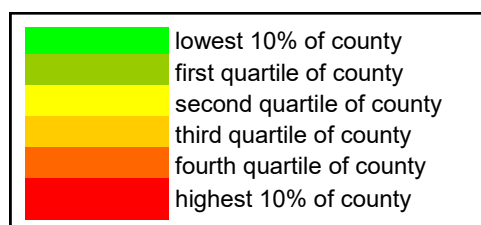
Figure 12 shows the claimant rates in Stroud District wards. The red line represents the average claimant rate across the District of 2.1%. Twelve wards are above the average.

PART 4: LOCAL AUTHORITY AND DISTRICT ANALYSIS

4.5 Stroud District continued...

Table 9: Analysis of Claimant Count at Stroud District ward level - February 2025

District	Ward	Rate	Rank*
Stroud	Chalford	1.4	10
Stroud	Randwick, Whiteshill and Ruscombe	1.4	10
Stroud	Coaley and Uley	1.5	16
Stroud	Bisley	1.6	19
Stroud	Minchinhampton	1.7	25
Stroud	The Stanleys	1.7	25
Stroud	Painswick and Upton	1.8	34
Stroud	Berkeley Vale	1.9	43
Stroud	Rodborough	1.9	43
Stroud	Stroud Farmhill and Paganhill	1.9	43
Stroud	Wotton-under-Edge	1.9	43
Stroud	Amberley and Woodchester	2.0	51
Stroud	Thrupp	2.0	51
Stroud	Cam East	2.1	59
Stroud	Kingswood	2.1	59
Stroud	Dursley	2.2	63
Stroud	Nailsworth	2.2	63
Stroud	Stroud Uplands	2.3	68
Stroud	Cainscross	2.4	73
Stroud	Severn	2.4	73
Stroud	Stonehouse	2.4	73
Stroud	Hardwicke	2.5	78
Stroud	Cam West	2.6	85
Stroud	Stroud Trinity	3.1	108
Stroud	Stroud Slade	3.6	114
Stroud	Stroud Valley	3.7	116
Stroud	Stroud Central	4.2	124



* 1 = "best" and 138 = "worst"

Table 9 shows overall claimant rates for Stroud District wards and their position relative to all wards in Gloucestershire.

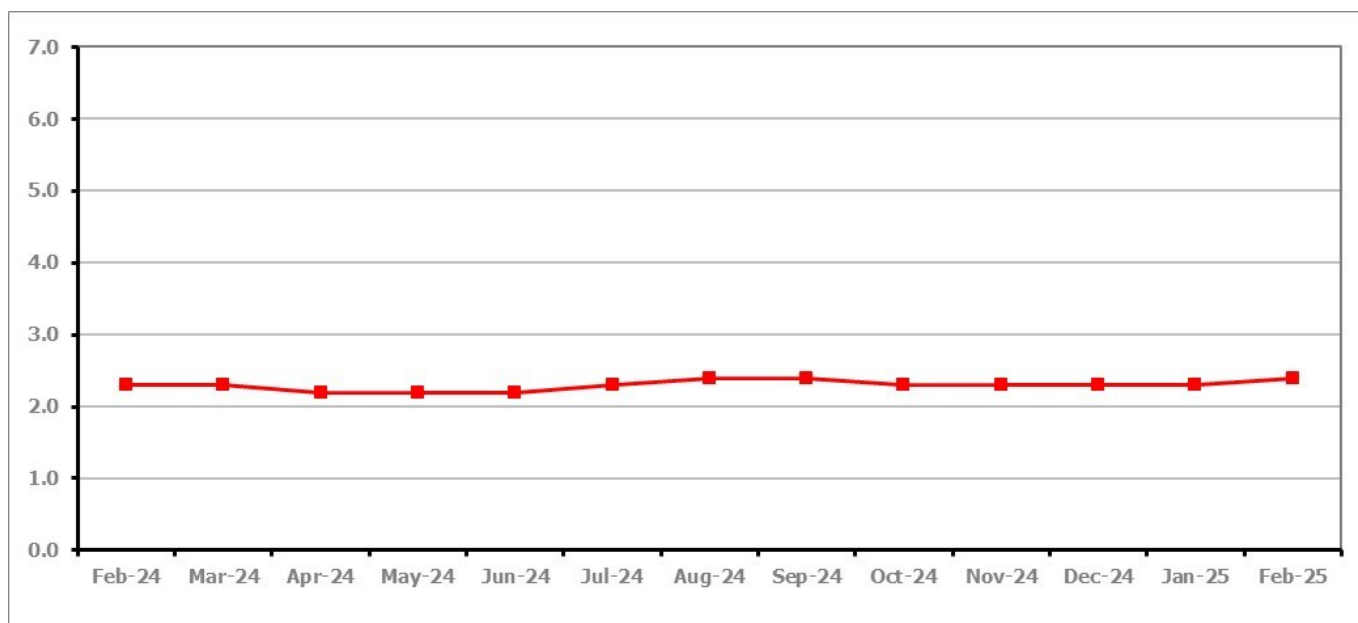
PART 4: LOCAL AUTHORITY DISTRICT AND WARD ANALYSIS**4.6 Tewkesbury Borough****Claimant Rate and Claimant Count***Figure 13: Tewkesbury Borough claimant rate over the last year*

Figure 13 shows the claimant rate for Tewkesbury Borough increased to 2.4% in February 2025.

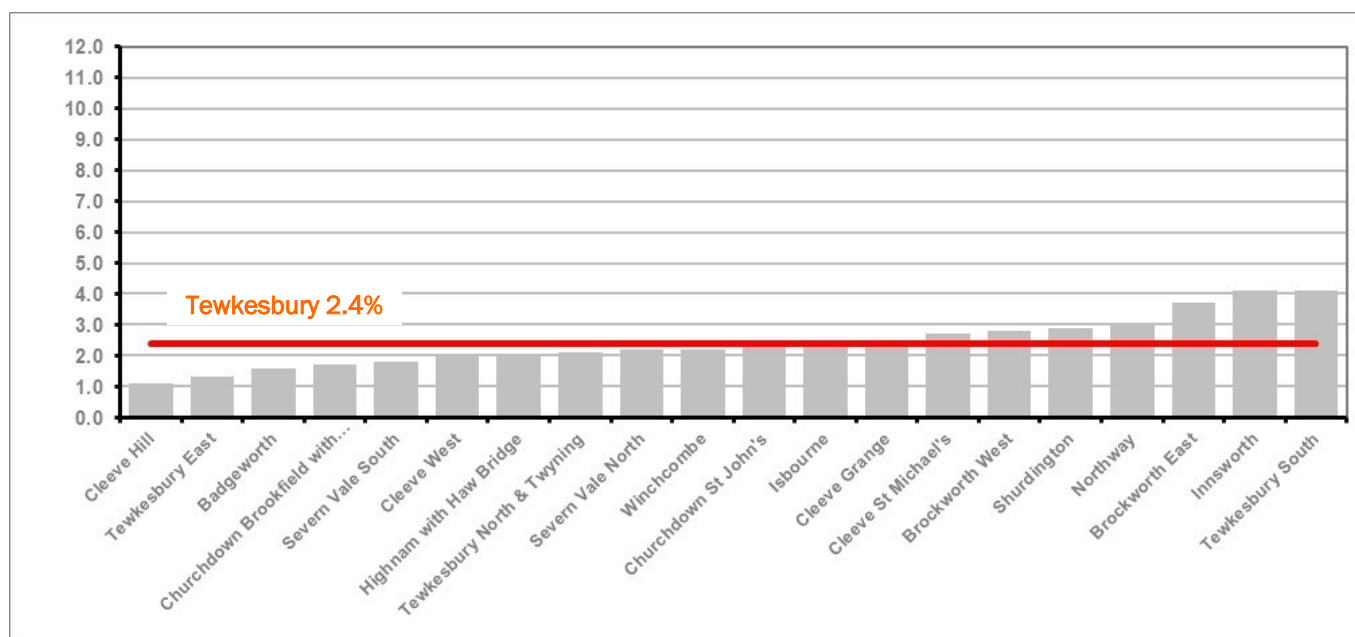
Figure 14: Claimant rates across Tewkesbury Borough wards - February 2025

Figure 14 shows the claimant rates in Tewkesbury Borough wards. The red line represents the average claimant rate across the District of 2.4%. Eight wards are above the average.

PART 4: LOCAL AUTHORITY AND DISTRICT ANALYSIS

4.6 Tewkesbury Borough continued...

Table 10: Analysis of Claimant Count at Tewkesbury Borough level - February 2025

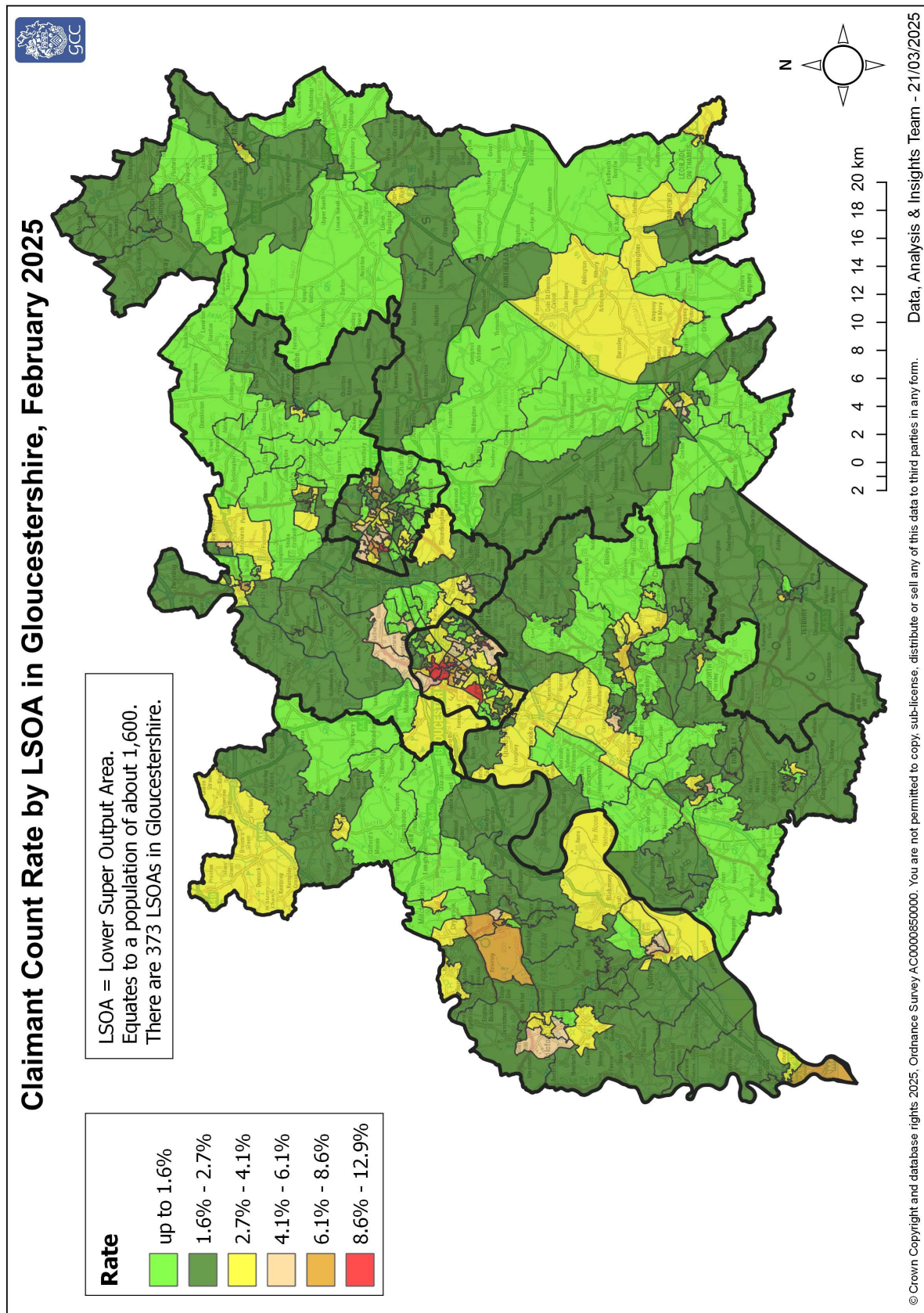
District	Ward	Rate	Rank*
Tewkesbury	Cleeve Hill	1.1	2
Tewkesbury	Tewkesbury East	1.3	6
Tewkesbury	Badgeworth	1.6	19
Tewkesbury	Churchdown Brookfield with Hucclecote	1.7	25
Tewkesbury	Severn Vale South	1.8	34
Tewkesbury	Cleeve West	2.0	51
Tewkesbury	Highnam with Haw Bridge	2.0	51
Tewkesbury	Tewkesbury North & Twynning	2.1	59
Tewkesbury	Severn Vale North	2.2	63
Tewkesbury	Winchcombe	2.2	63
Tewkesbury	Churchdown St John's	2.3	68
Tewkesbury	Isbourne	2.3	68
Tewkesbury	Cleeve Grange	2.5	78
Tewkesbury	Cleeve St Michael's	2.7	91
Tewkesbury	Brockworth West	2.8	95
Tewkesbury	Shurdington	2.9	101
Tewkesbury	Northway	3.0	106
Tewkesbury	Brockworth East	3.7	116
Tewkesbury	Innsworth	4.1	121
Tewkesbury	Tewkesbury South	4.1	121

	lowest 10% of county
	first quartile of county
	second quartile of county
	third quartile of county
	fourth quartile of county
	highest 10% of county

* 1 = "best" and 138 = "worst"

Table 10 shows overall claimant rates for Tewkesbury Borough wards and their position relative to all wards in Gloucestershire.

PART 5: MAP SHOWING DISTRIBUTION OF CLAIMANT RATE ACROSS GLOUCESTERSHIRE

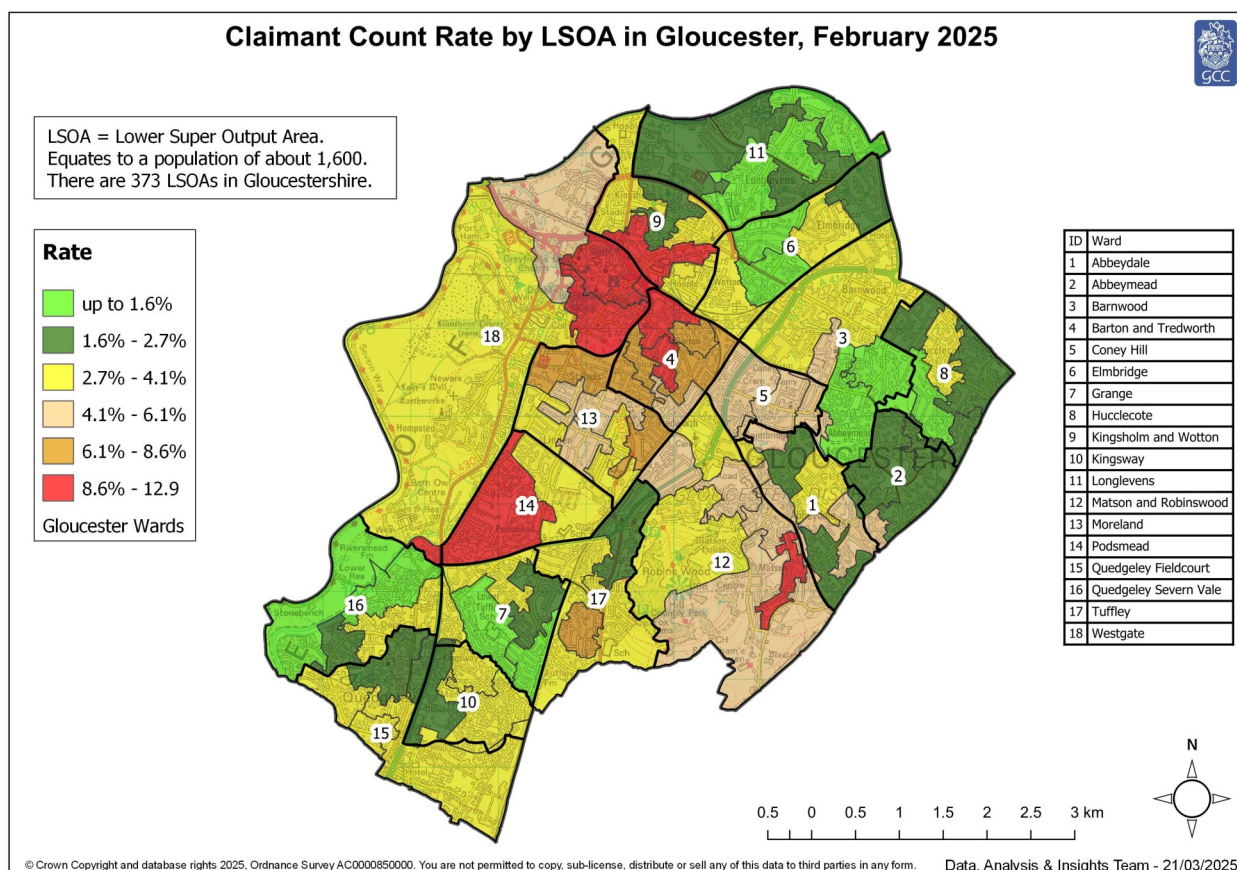
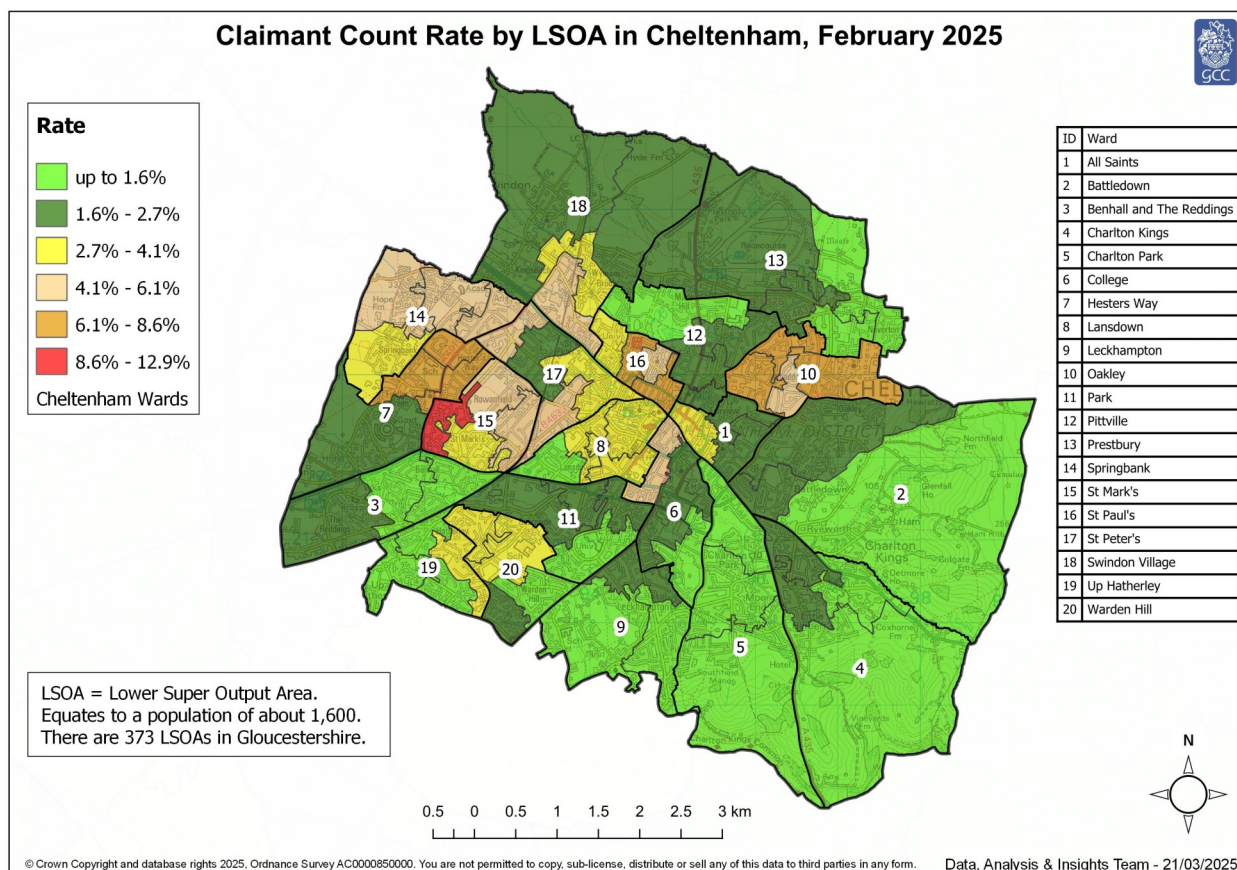


These maps currently show the 2011 LSOA boundaries.

Note: We have made changes to the way in which the rates illustrated on the maps are calculated - this means they are not comparable with those shown in previous bulletins.

Rates calculated using Lower Layer Super Output Area Population Estimates Mid-2020, Office for National Statistics

PART 5: MAP SHOWING DISTRIBUTION OF CLAIMANT RATE ACROSS GLOUCESTERSHIRE



These maps currently show the 2011 LSOA boundaries.

Note: We have made changes to the way in which the rates illustrated on the maps are calculated - this means they are not comparable with those shown in previous bulletins.

Rates calculated using Lower Layer Super Output Area Population Estimates Mid-2020, Office for National Statistics

PART 6: YOUTH UNEMPLOYMENT(18-24 year olds)

Youth Claimant Rate and Claimant Count

Figure 15: Claimant Count for Gloucestershire over the past year

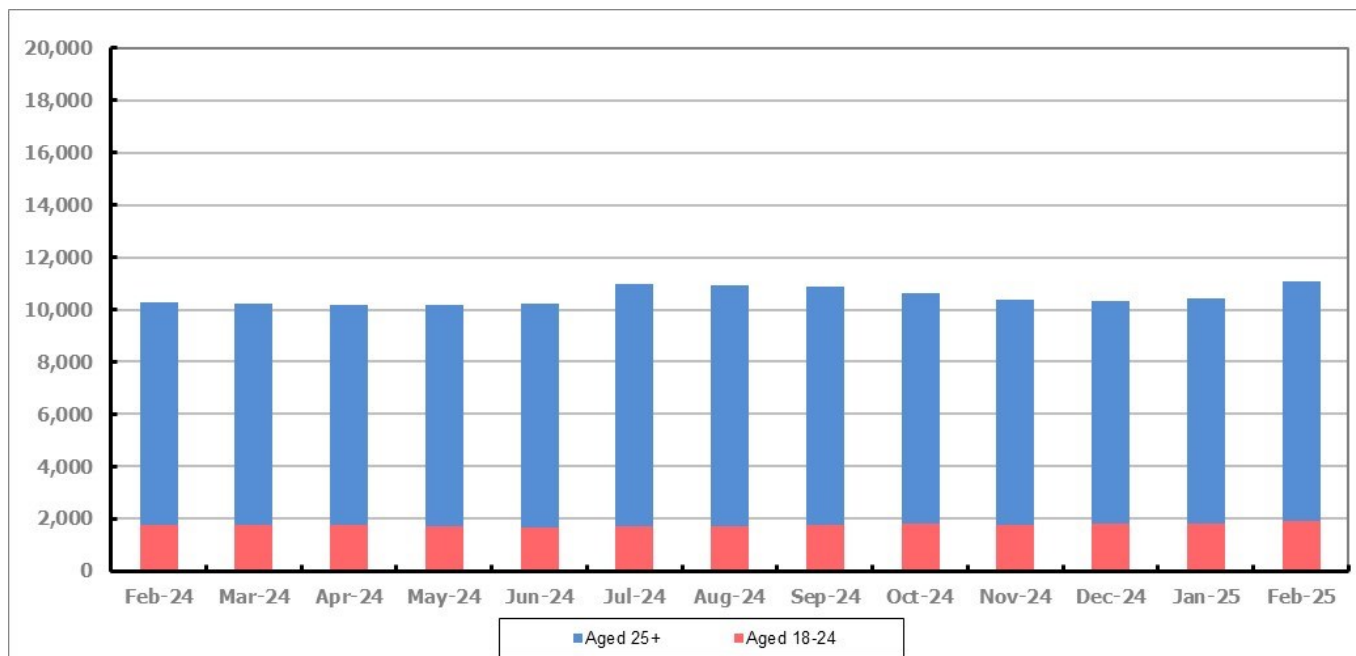


Figure 15 shows that in February 2025, 1,930 people aged 18-24 were claiming Job Seekers Allowance and Universal Credit who were not in work in Gloucestershire, this represents 17.4% of total working age claimants.

PART 7: YOUNG PEOPLE NOT IN EDUCATION, EMPLOYMENT OR TRAINING (NEET) IN GLOUCESTERSHIRE

Data provided by Gloucestershire Youth Support Team on the situation of young people (16-18) in Gloucestershire who are not in education, employment or formal training.

Gloucestershire Youth Support Team is required to report performance on the Academic Year 12 and 13 (16/17 age) against nationally defined criteria for counting the NEET group to the Department for Education (DfE) on a monthly basis. The NEET group includes young people actively seeking education, employment or training as well as those young people who are either not yet ready or who are unable to access these opportunities because of their personal circumstances. The figures quoted below include young people in both of these categories.

(End of) February 2025

Academic Year 12-13 Summary

	NEET	Cohort	%
Cheltenham	97	2480	3.91%
Cotswold	54	1825	2.96%
Forest	60	1754	3.42%
Gloucester	213	3556	5.99%
Stroud	73	2850	2.56%
Tewkesbury	85	2140	3.97%
Total	582	14605	3.98%

16-18 Age Summary

	NEET	Cohort	%
Cheltenham	116	3087	3.76%
Cotswold	61	2278	2.68%
Forest	72	2229	3.23%
Gloucester	260	4413	5.89%
Stroud	87	3586	2.43%
Tewkesbury	101	2707	3.73%
Total	697	18300	3.81%

16-18 Adjust NEET*	3.98%
--------------------	-------

Monthly Change	-38	6	-0.26%
Previous month	620	14599	4.25%

Monthly Change	-49	-490	-0.16%
Previous month	746	18790	3.97%

The academic year 12-13 group contains a proportion of young people who turn 18 in the academic year but were 17 on the 31st August the previous academic year so are entitled to learning through RPA (raising participation age).

Please note all figures quoted above are subject to change before the submission date to the DfE which usually happens in the second or third week of the month for the previous month.

If you would like to receive any further information on Gloucestershire's NEET strategy, then please contact lynne.speak@gloucestershire.gov.uk.

(*) Adjustment includes a proportion of young people aged 16-18 whose outcomes are not-known to Gloucestershire Youth Support Team.