

# Attendance data and updates

*“Regularly analyse attendance and absence data to identify pupils or cohorts that require support with their attendance and put effective strategies in place”*

- Where to get data from
- Latest headlines from published data
- Using available data
- Penalty Notices update

**Laura Berry**

Senior Data Analyst

Education Data, Analysis and Insights Team

Mail: [EducationDataHub@Gloucestershire.gov.uk](mailto:EducationDataHub@Gloucestershire.gov.uk)



# Attendance data and updates

## Where to get data from...

 **ScholarPack**  
Part of Arbor Education



**Bromcom**   
No.1 Choice for Cloud MIS & Finance



 **wonde**

  
Department  
for Education

### DfE pupil attendance and absence in schools in England: data dashboard

Official Statistics

#### Pupil attendance in schools

Publicly available fortnightly National, Regional and Local Authority attendance data dashboards



### View your education data

#### Important

**You need a DfE Sign-in account to access this service.**

IDAMS users have been contacted about the move to DfE Sign-in. Check you have an email from [dfe.signin@education.gov.uk](mailto:dfe.signin@education.gov.uk). If you are having problems, [submit an enquiry](#).



Organisational (school, MAT, LA) secure access to interactive dashboards and reports on the data submitted

Living our values every day  




Accountable



Integrity



Empower



Respect

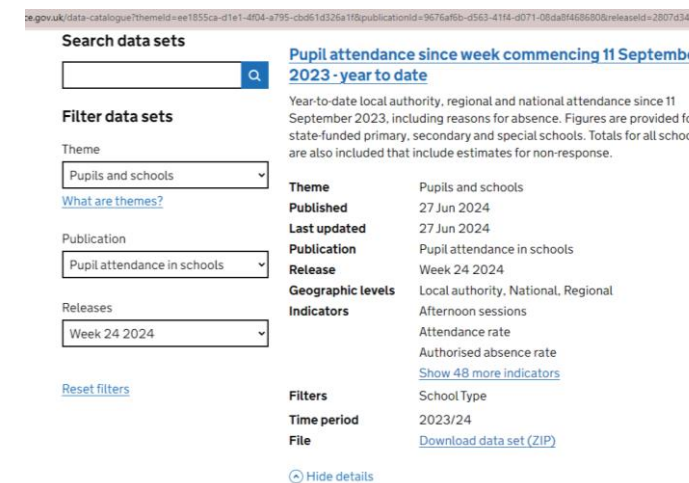
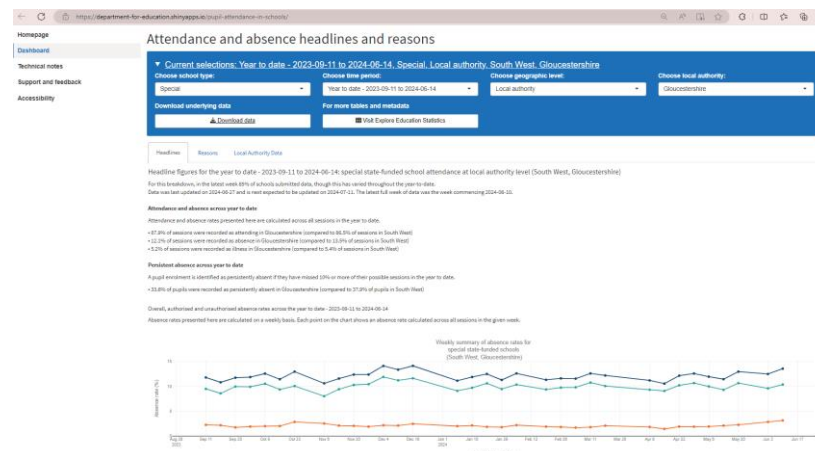
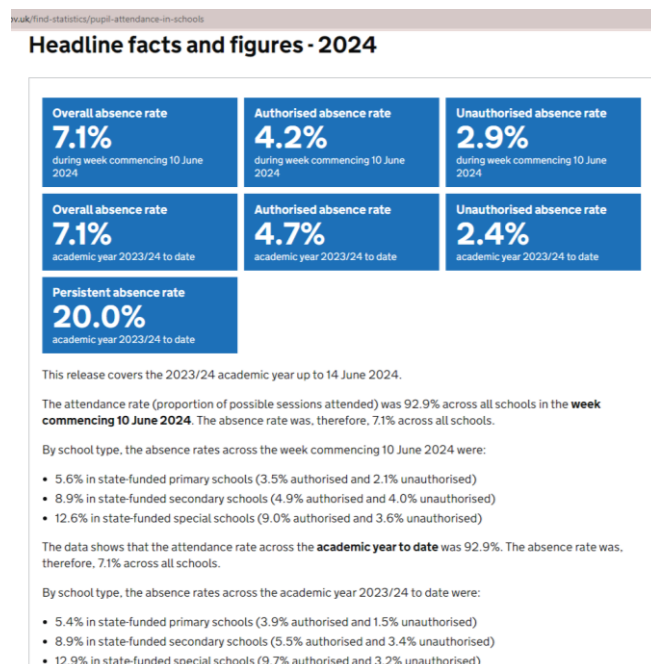


Excellence

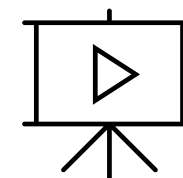


# DfE pupil attendance and absence in schools in England: data dashboard

## ➤ Fortnightly data dashboards and headlines



Coming soon...  
Explore data with the publicly available absence data (GCC)



# View Your Education Data

## ➤ Interactive dashboards for all pupils in your school

Monitor your school attendance (VYED)

Current academic year up to Friday 19 April 2024

Number of pupils: 241

Overall absence %: 16.1%

Overall absence %: 4.8%

Unauthorised absence %: 0.8%

Percentage of persistently absent pupils: 14.1%

Percentage of severely absent pupils: 0.8%

Filters on this page:

- Compulsory school age is (All)
- Sex is (All)
- Ethnicity is (All)
- Year group is (All)
- Persistently absent is (All)
- Severely absent is (All)
- Special educational needs (SEN) support is (All)
- Free school meals (FSM) is (All)
- Education, health and care plan (EHCP) is (All)
- Looked after child (LAC) is (All)
- Previously looked after child (PLAC) is (All)
- Child in need (CIN) is (All)
- Child protection plan (CPP) is (All)
- Leavers is (All)

16:53 / 42:26

Monitor your school attendance - May webinar for schools and trusts not yet sharing data

YouTube | DfE Sector Comms | 396 views | 1 month ago

Absence bandings overview

View school attendance data

Absence bandings

1. When you log in, you'll see the new page on your insights dashboard

2. Bands of 5% groups from 0% to 50% and then over 50%

3. No. of pupils

4. % of pupils

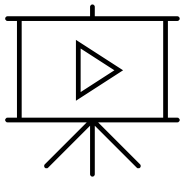
5. Labelled persistent absent or severely absent

You can use the filters to dig into different bandings.

21:10 / 42:26

<https://youtube/vfoIEmzOEUo>

Click to follow the link to  
**Monitor your school attendance (May 2024)**



Living our values every day



Accountable



Integrity



Empower



Respect

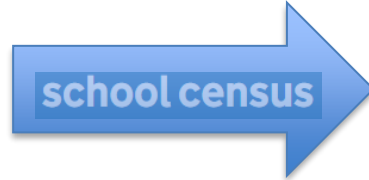
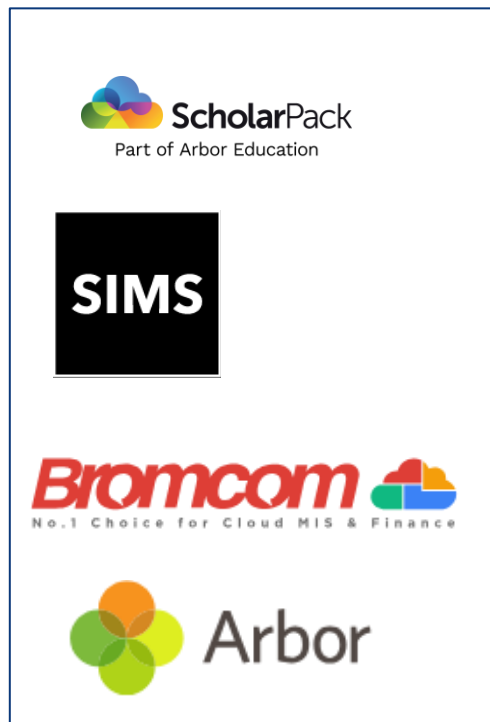



Excellence



# Attendance data and updates

## Where to get data from...








Department  
for Education

Collection  
**Statistics: pupil attendance and  
absence**

Pupil absence publication statistics as derived from the termly school census. Publicly available at school, district, local authority, regional and national level



# Statistics: Pupil attendance and absence

## ➤ [Published absence statistics](#)

Accredited official statistics

### Pupil absence in schools in England: 2022 to 2023

This release reports on pupil absence in primary and secondary schools in the 2022 to 2023 academic year.

From: [Department for Education](#)  
Published 21 March 2024



🔔 Get emails about this page

Applies to England

#### Related content

Collection

[Statistics: pupil attendance and absence](#)

#### Documents



[Pupil absence in schools in England: 2022 to 2023](#)

<https://explore-education-statistics.service.gov.uk/find-statistics/pupil-absence-in-schools-in-england/2022-23>

Explore education statistics

Beta This is a new service – your [feedback](#) will help us to improve it.

[Home](#) > [Create your own tables](#)

Table Tool

Create your own tables

Choose the data and area of interest you want to explore and then use filters to create your table. Once you've created your table, you can download the data it contains for your own offline analysis.

Step 1 Publication Pupil absence in schools in England

Step 2 Select a data set

☐ View all featured tables

Please select a data set, you will then be able to see a summary of the data, create your own tables, view featured tables, or download the entire data file.

Alternatively you can browse [featured tables](#) from across all the data sets for this publication.

Featured tables have been created by our publication team, highlighting popular tables built from data sets available in this publication. These tables can be viewed, shared and customised to the data that you're interested in.

or select a data set

☐ Absence rates by geographic level

☐ Absence rates by geographic level - termly

☐ Absence rates - school level

☐ Enrolments with one or more session of absence, including by reason for absence

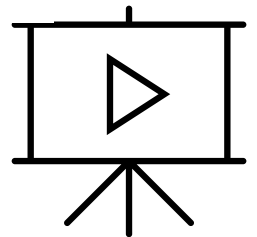
☐ Enrolments with one or more session of absence, including by reason for absence - school level

☐ Absence rates as a percentage of possible

[Training and Support \(gloucestershire.gov.uk\)](#)

Click to follow the link to

Create tables from published attendance statistics (GCC)



Accountable



Integrity



Empower



Respect

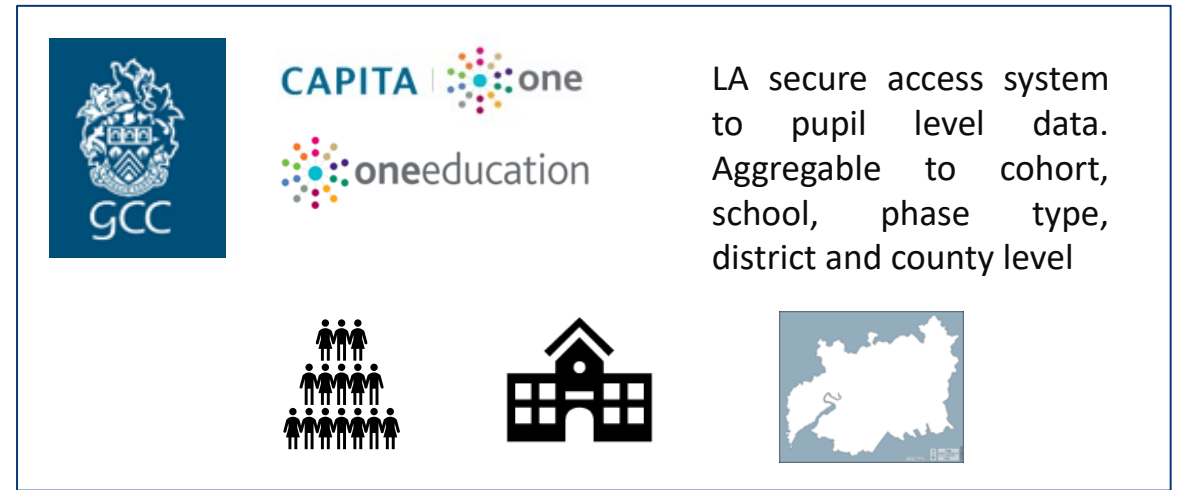
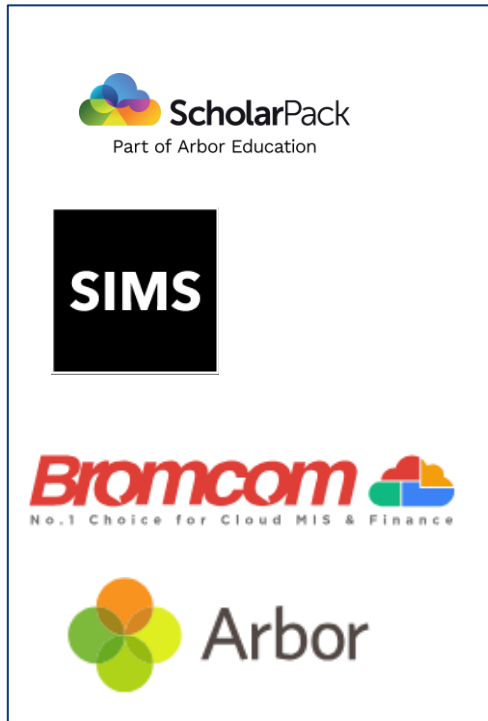


Excellence



# Attendance data and updates

## Where to get data from...



# Latest published data

As derived from school census

School-level absence (with reasons) and Persistent & Severe Absentee numbers

...aggregated to: *Phase and District-level*  
*Phase and LA-level*  
*Phase and regional-level*  
*Phase and National*



**Autumn Term** collected January census, published **May**

**Autumn and Spring** terms collected May census, published **October**

**Whole academic year** collected October census, published **March**



Accountable



Integrity



Empower



Respect



Excellence





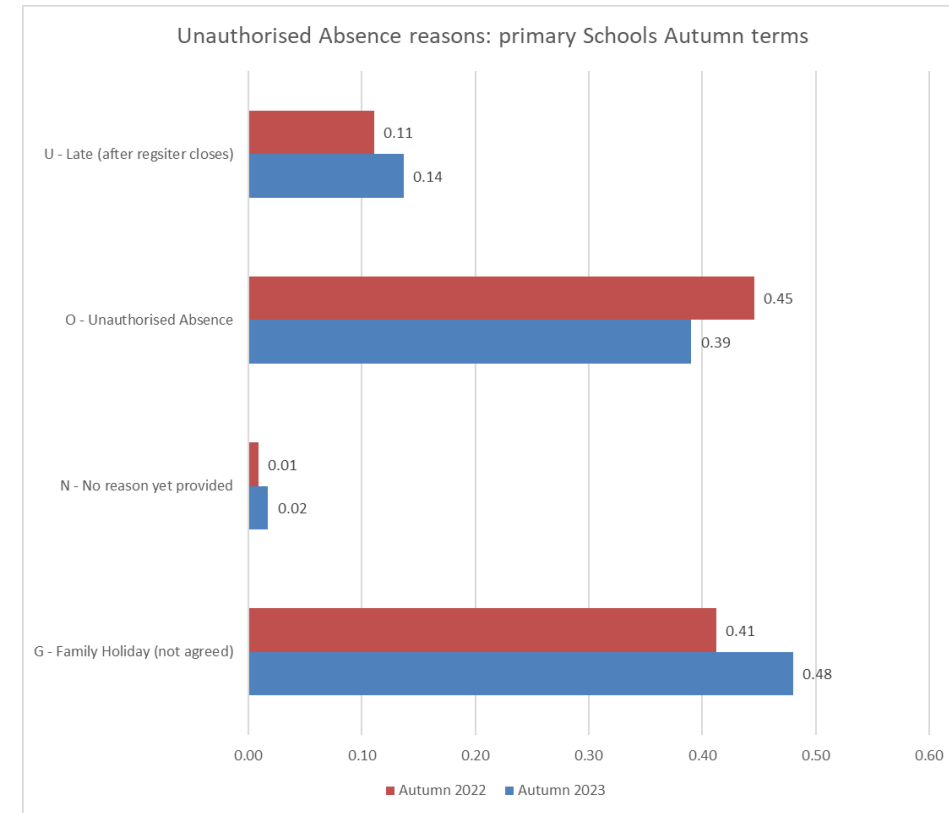
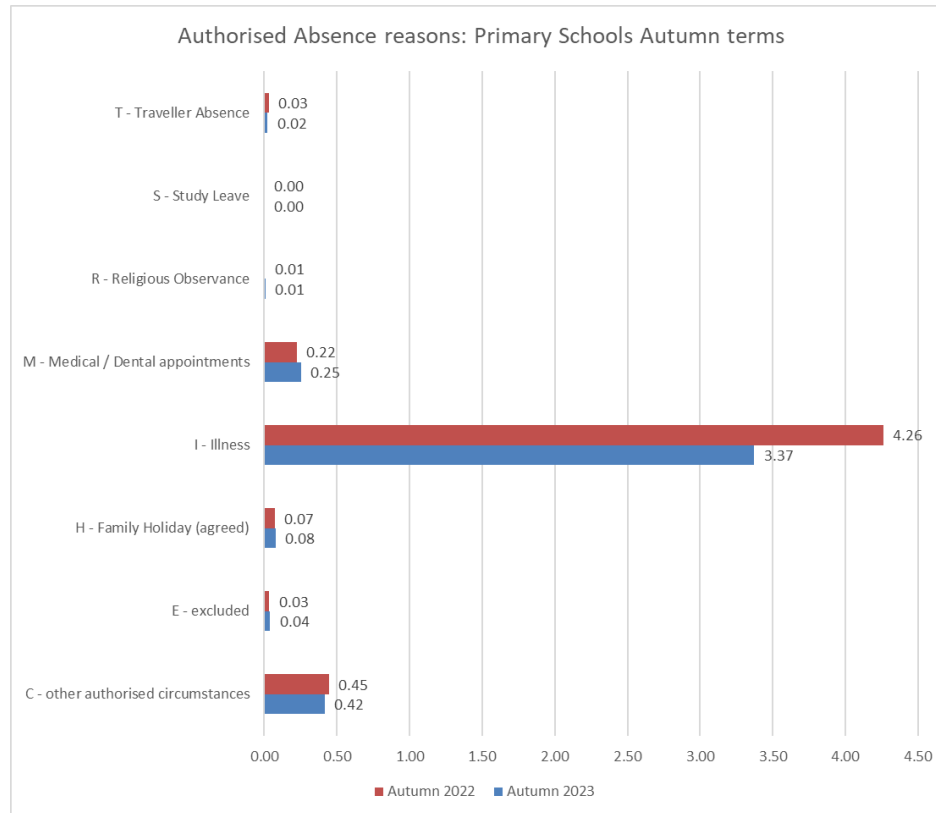
# Latest published data

Overall absence, Persistent Absence (PA) and Severe Absence (SA) rates (Primary Autumn term):

	2020/21	2021/22	2022/23	2023/24
Gloucestershire absence %	3.24%	5.54%	6.06%	5.21%
England absence %	3.68%	5.71%	6.29%	5.25%
Gloucestershire PA %	7.69%	18.98%	18.92%	14.41%
England PA %	9.87%	19.50%	20.90%	15.41%
Gloucestershire SA %	0.56%	0.49%	0.59%	0.73%
England SA %	1.45%	1.12%	1.32%	0.81%

# Latest published data

Absence Reasons (percentage of possible sessions missed):



# Latest (fortnightly) publicly available data

## (Almost) Whole Year 2023/24

### Step 6 Explore data

This is the latest data

'Pupil attendance since week commencing 11 September 2023 - year to date' for Primary in England and Gloucestershire for 2023/24

Move and reorder table headers

		2023/24	2022/23
South West	Gloucestershire	Attendance rate	94.5%
		Authorised absence rate	4.3%
		Persistent absence rate	14.1%
		Unauthorised absence rate	1.1%
England		Attendance rate	94.6%
		Authorised absence rate	3.9%
		Persistent absence rate	14.9%
		Unauthorised absence rate	1.5%

<https://explore-education-statistics.service.gov.uk/data-tables/permalink/a493b51e-9b53-4720-9067-08dc9999c6a5>

Living our values every day



Accountable



Integrity



Empower



Respect



Excellence



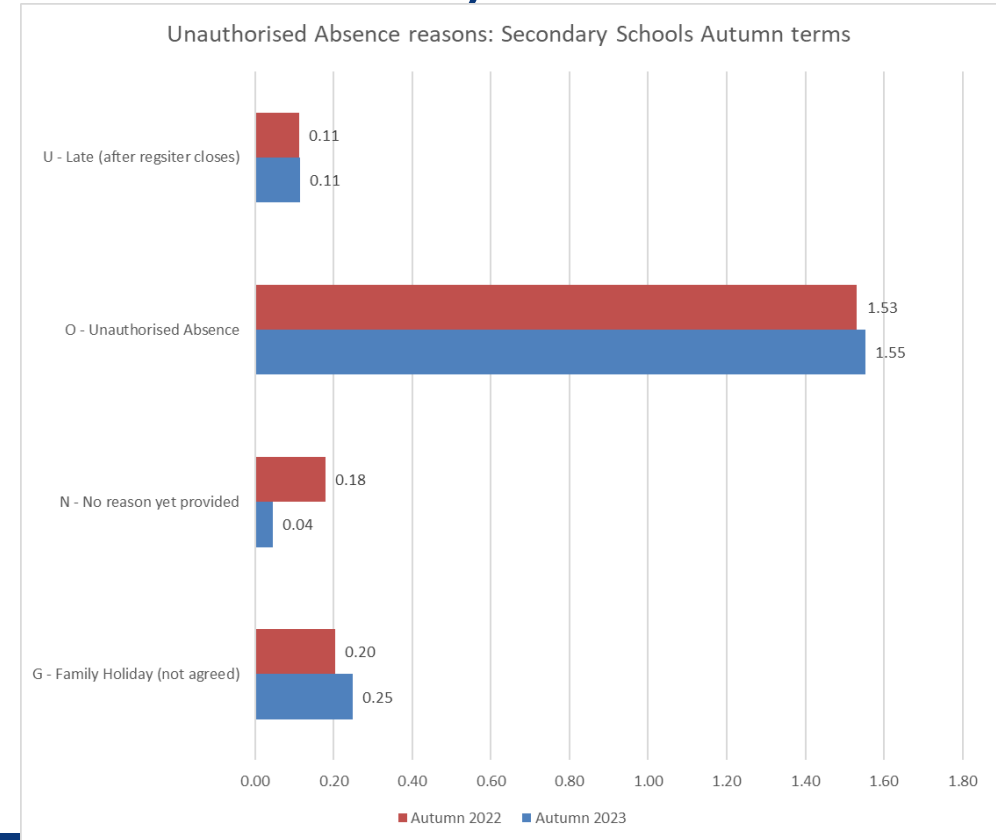
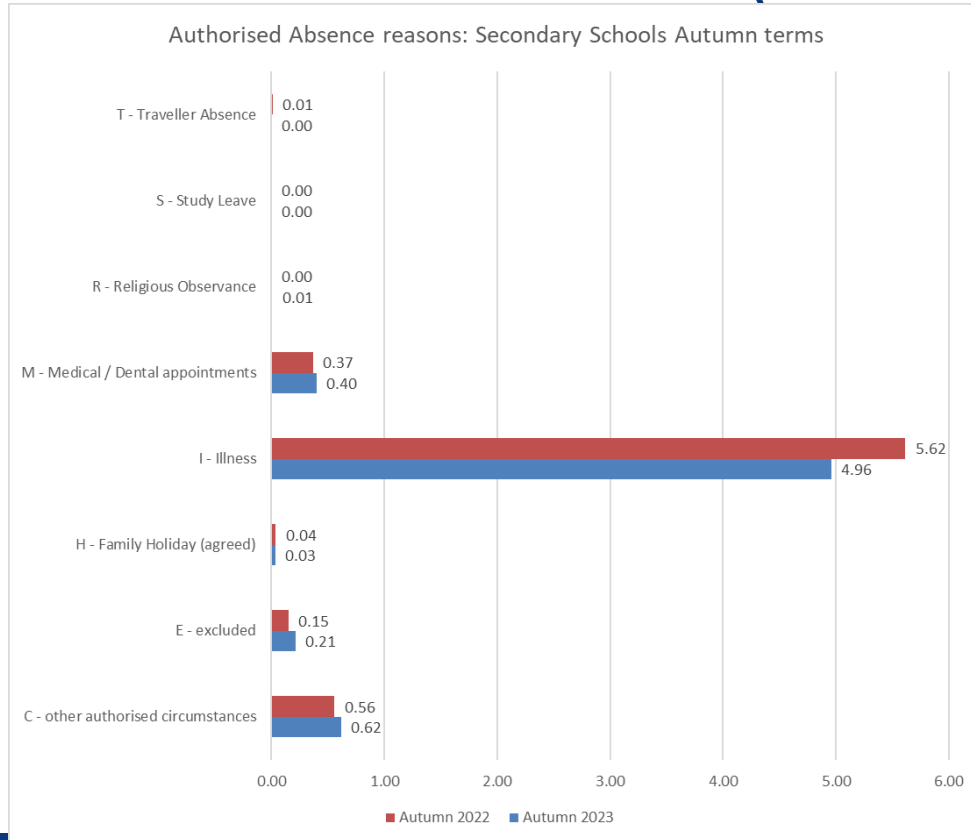
# Latest published data

Overall absence, Persistent Absence (PA) and Severe Absence (SA) rates (Secondary Autumn term):

	2020/21	2021/22	2022/23	2023/24
Gloucestershire absence %	5.32%	7.82%	8.78%	8.19%
England absence %	5.69%	8.16%	8.79%	8.15%
Gloucestershire PA %	14.64%	25.05%	27.11%	23.61%
England PA %	16.26%	27.70%	27.44%	23.44%
Gloucestershire SA %	1.63%	2.12%	2.61%	3.00%
England SA %	3.35%	4.25%	5.38%	3.14%

# Latest published data

## Absence Reasons (Secondary Autumn term):



# Latest (fortnightly) publicly available data

## (Almost) Whole Year 2023/24

### Step 6 Explore data

This is the latest data

'Pupil attendance since week commencing 11 September 2023 - year to date' for Secondary in England and Gloucestershire for 2023/24

Move and reorder table headers

		2023/24	2022/23
South West	Gloucestershire	Attendance rate	91.1%
		Authorised absence rate	6.6%
		Persistent absence rate	24.9%
		Unauthorised absence rate	2.3%
England		Attendance rate	91.1%
		Authorised absence rate	5.5%
		Persistent absence rate	25.9%
		Unauthorised absence rate	3.4%

<https://explore-education-statistics.service.gov.uk/data-tables/permalink/e3815347-f305-4f9e-906a-08dc9999c6a5>

# Latest published data

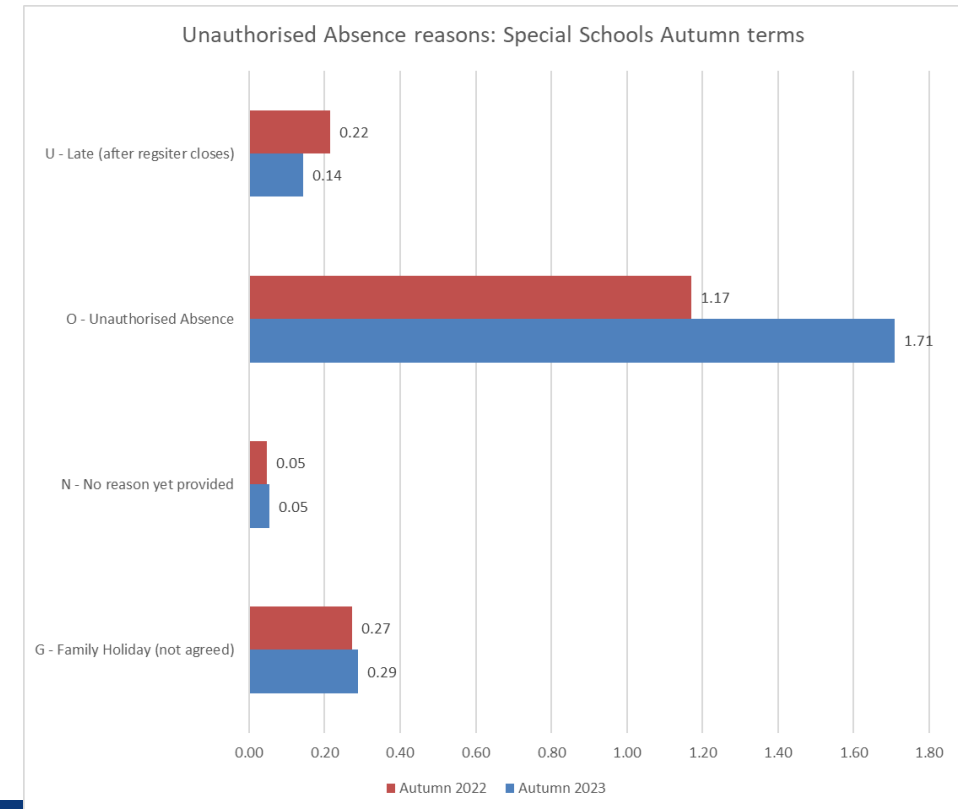
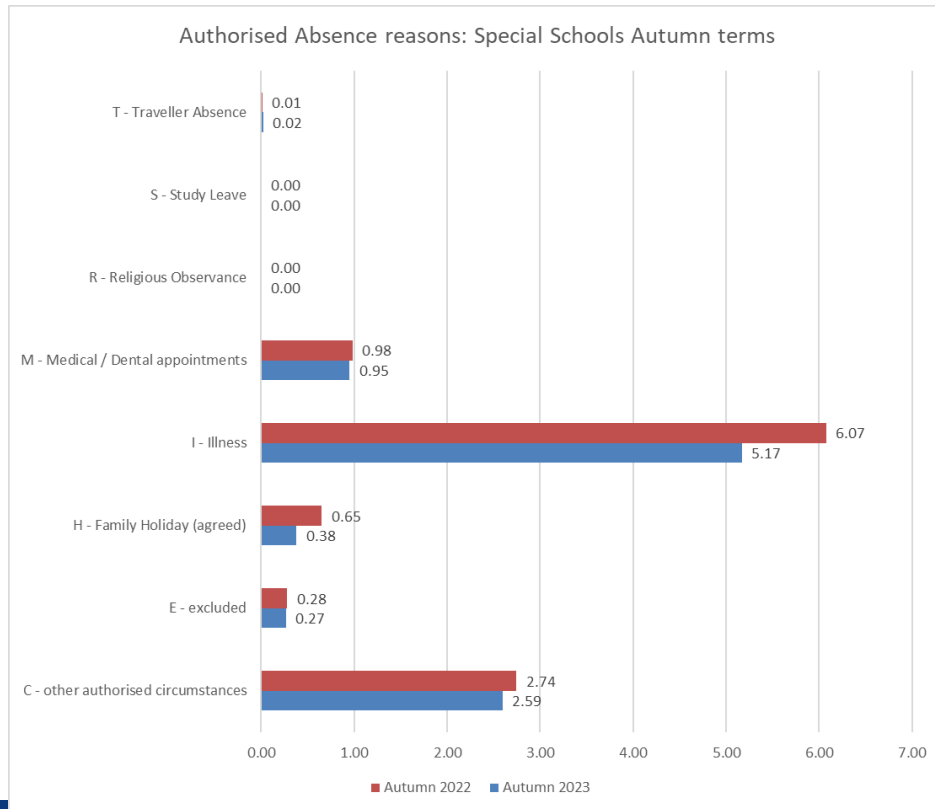
Overall absence, Persistent Absence (PA) and Severe Absence (SA) rates (Special Autumn term):

	2020/21	2021/22	2022/23	2023/24
Gloucestershire absence %	8.70%	11.36%	12.83%	11.91%
England absence %	10.58%	12.76%	13.39%	12.71%
Gloucestershire PA %	22.82%	37.84%	39.09%	33.93%
England PA %	29.20%	39.35%	40.90%	36.19%
Gloucestershire SA %	3.42%	3.26%	5.46%	5.65%
England SA %	8.59%	8.72%	11.26%	6.15%



# Latest published data

## Absence Reasons (Special Autumn term):



# Latest (fortnightly) publicly available data

## (Almost) Whole Year 2023/24

### Step 6 Explore data

This is the latest data

'Pupil attendance since week commencing 11 September 2023 - year to date' for Special in England and Gloucestershire for 2023/24

Move and reorder table headers

		2023/24	2022/23
South West	Gloucestershire	Attendance rate	87.9%
		Authorised absence rate	10.0%
		Persistent absence rate	33.6%
		Unauthorised absence rate	2.1%
England		Attendance rate	87.1%
		Authorised absence rate	9.7%
		Persistent absence rate	37.0%
		Unauthorised absence rate	3.2%

<https://explore-education-statistics.service.gov.uk/data-tables/permalink/8f12505b-6f9b-4341-906d-08dc9999c6a5>

Living our values every day



Accountable



Integrity



Empower



Respect



Excellence



# Using your data

Schoolsnet

Search the Schoolsnet website



[Home](#) / [Schoolsnet](#) / [Noticeboard](#) / [Schoolsnet Bulletin Board](#) / **Changes to School Attendance Law – Support First - are you ready?**

## Changes to School Attendance Law – Support First - are you ready?

Published

29.05.2024

Further to the DfE announcements on the changes which take effect from 19th August 2024 here are some resources that you may find useful, including webinars provided by the DfE for schools. Please ensure you share this with your Senior Attendance Champion (member of SLT).

[Changes to School Attendance Law – Support First - are you ready? \(gloucestershire.gov.uk\)](https://www.gloucestershire.gov.uk/changes-to-school-attendance-law-support-first-are-you-ready/)

Follow this live link to the most updated advice from the DfE on supporting attendance with their strapline 'Moments Matter, Attendance Counts' including updated posters that you could use in school: [Attendance communications toolkit for schools \(dfegovukassets.blob.core.windows.net\)](https://dfegovukassets.blob.core.windows.net/) This includes further resources to support the changes.

The DfE are running a series of webinars over the summer term which are available afterwards on their [You Tube Channel](#) In particular we would draw your attention to: [The Overview on the latest guidance for schools](#) and the [Role of the Senior Attendance Champion](#) There is also a very useful webinar on the changes in coding that will soon be available to view. The links to the training and how you can book on can be found here: [PowerPoint Presentation \(govdelivery.com\)](https://govdelivery.com/)

Information from project run by the Education Endowment Foundation Attendance, including training webinars on our Schoolsnet page here: [Attendance \(gloucestershire.gov.uk\)](https://www.gloucestershire.gov.uk/attendance/) This is regularly updated to include the latest guidance and advice. regarding the improvement of parental engagement and pupil attainment through the use of text messages to communicate with parents can be found here: [Texting Parents | EEF \(educationendowmentfoundation.org.uk\)](https://www.educationendowmentfoundation.org.uk/texting-parents/)

N.B. All of the links can be found along with advice and guidance on

Attendance, including training webinars on our Schoolsnet page here: [Attendance \(gloucestershire.gov.uk\)](https://www.gloucestershire.gov.uk/attendance/) This is regularly updated to include the latest guidance and advice.

Attendance support – 01452 427274

Living our values every day



Accountable



Integrity



Empower



Respect



Excellence



# Using your data



## Attendance communications toolkit for schools

March 2024 update



Department  
for Education



Living our values every day



Accountable



Integrity



Empower



Respect



Excellence



# Using your data

## Preparing for Back to School in September now: 6 top tips for schools

MOMENTS  
MATTER,  
ATTENDANCE  
COUNTS.

It is essential that schools start 'back to school' preparation early – particularly for those transitioning from one school to another. Based off best practice from the attendance hubs and other schools with high attendance, we have developed some **top tips** for schools to begin preparing now to support pupils to have the strongest start possible in September.

1. **Identify pupils and cohorts who need support now:** Analyse last year's attendance data to pinpoint students needing extra help or encouragement before the new school year begins. Implement personalised plans, like [Wheeler Lane Technology College](#), to boost attendance.
5. **Keep attendance high until the end of year by motivating pupils and parents/carers:** Keeping students excited and engaged is key to promoting school attendance. For example, [Willows Primary Academy \(part of the DELTA Academies Trust\)](#) motivates students with attendance cards. Pupils earn stamps for attendance and punctuality, which translate into entries for a weekly prize draw. Keeping parents in the loop with **regular updates on their child's attendance data** can also help parents understand the importance of regular attendance and recognise the cumulative impact of taking a day or two off at a time. For example, [Icknield Infant and Nursery School](#) shares individual pupil attendance data during parents' evening, allowing parents and carers to see the aggregate impact of sporadic absences.



# Using your data

What they  
said...

“use the data to  
identify and  
respond to  
trends early”

“Analyse last year’s  
attendance data to pinpoint  
students needing extra help  
or encouragement before  
the new school year  
begins”

“regular updates  
on their child’s  
attendance data”

What we  
could do...

- Trends against county / national
- Identify school / cohort issues
- Evidence intervention impact

- Group pupils into bands
- Identify at risk of PA or SA

- Celebrate improvement
- Demonstrate impact
- Personalise support

What we  
could use...

DFE

VYED

MIS  
VYED  
Spreadsheet



# Attendance data and updates

## Penalty Notices

<b>Outcomes of all PN's requested / issued</b>			
<i>(whole academic years and current academic year to end June)</i>			
	2021/22	2022/23	2023/24
Requested	893	2370	2368
Total Issued	707	1842	1935
<b>% issued</b>	<b>79.2%</b>	<b>77.7%</b>	<b>81.7%</b>
Paid	77.6%	84.3%	78.8%
Withdrawn	21.9%	12.5%	10.1%
Unpaid - Prosecuted	0.3%	0.9%	0.4%
Unresolved	0.3%	2.6%	10.8%

England: 4.7 PN's issued per 100 pupils in 2018/19  
2.1 in Gloucestershire

England: 0.6 PN's issued per 100 pupils in 2020/21  
0.2 in Gloucestershire

England: 3.0 PN's issued per 100 pupils in 2021/22  
0.9 in Gloucestershire

England: 5.4 PN's issued per 100 pupils in 2022/23  
2.3 in Gloucestershire



# Attendance data and updates

## Penalty Notices

As at end June... 1,915 Holiday PNs issued

- ❖ Almost a third (77) of 244 primary schools have had at least one PN for holiday absence issued
  - ❖ The most for any one primary school is 72
  - ❖ Primary school rate (number issued per 100 pupils) = 2.4
  - ❖ Highest rate for a Gloucestershire primary school is 32 per 100 pupils
  - ❖ For those primary schools who we do issue for, rate is 7.5 per 100 pupils
- 
- ❖ Over half (23) of 41 secondary schools have had at least one PN for holiday absence issued
  - ❖ The most for any one secondary school is 159
  - ❖ Secondary school rate (number issued per 100 pupils) = 1.9
  - ❖ Highest rate for a Gloucestershire secondary school is 13.4 per 100 pupils
  - ❖ For those secondary schools who do issue for, rate is 3.3 per 100 pupils

# Attendance data and updates

## Penalty Notices

Penalty Notices issued for Holiday absence by term (terms include to end of holiday i.e. the day before new term starts):								
		Aut1	Aut2	Spr1	Spr2	Sum1	Sum2	TOTAL
2021/22	Primary	24	15	29	22	45	276	411
	Secondary	27	38	13	13	9	195	295
	Special	0	0	0	0	0	0	0
	APS	0	0	0	0	0	0	0
TOTAL		51	53	42	35	54	471	706
2022/23	Primary	95	154	91	56	80	672	1148
	Secondary	83	127	50	50	42	363	715
	Special	0	0	0	0	0	0	0
	APS	0	0	0	0	0	0	0
TOTAL		178	281	141	106	122	1035	1863
2023/24	Primary	214	265	164	115	151	?	909
	Secondary	177	226	72	35	82	?	592
	Special	0	0	0	0	0	?	0
	APS	0	0	0	0	0	?	0
TOTAL		391	491	236	150	233	?	1501

# Attendance data and updates

- Contact Inclusion Officers for advice and support on managing absence and promoting attendance
- Encourage Data Managers to explore the data available
- Contact your linked Inclusion Officer or Education Data, Analysis and Insights Team if you have any data-related questions or training requests

[Laura.Berry@gloucestershire.gov.uk](mailto:Laura.Berry@gloucestershire.gov.uk)

[EducationDataHub@gloucestershire.gov.uk](mailto:EducationDataHub@gloucestershire.gov.uk)



*Thank you!*