

SUPPORTING CYP WITH VISUAL DIFFICULTIES IN SCHOOL

Advisory
Teaching
Service



GCC



UNDERSTAND THE PUPIL'S VISUAL NEEDS

- Talk with the pupil about what they can see easily and what is challenging.
- Observe how they manage board work; locating resources, and following instructions.
- Gather insights from families to identify potential barriers.

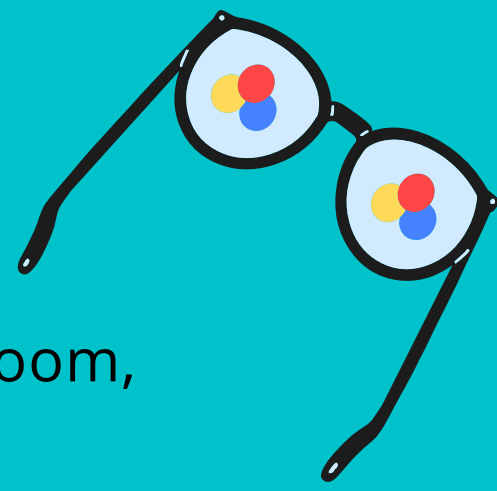
PROVIDE ACCESSIBLE TEACHING & LEARNING MATERIALS

- Use larger, well-spaced fonts and strong contrast.
- Offer digital versions for enlargements or adjustments.
- Avoid busy backgrounds and dense text.
- Present diagrams / images clearly with key information highlighted.
- Read aloud what's on the board or slides.
- Verbally describe diagrams, images, and demonstrations.
- Check discreetly that the pupil can see essential information.



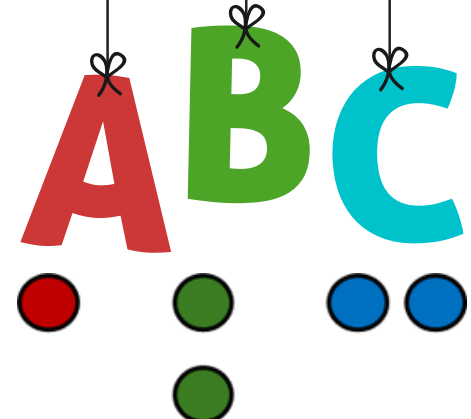
SUPPORT ASSISTIVE TECHNOLOGY AND INDEPENDENCE

- Encourage use of built-in device tools (zoom, contrast, screen readers).
- Allow laptops/tablets for enlarging material.
- Build confidence through practice and support.
- Teach consistent organisational routines.
- Encourage pupils to express when they cannot see or need adjustments.
- Keep classroom layouts predictable.
- Model problem-solving and help-seeking.



OPTIMISE THE CLASSROOM ENVIRONMENT

- Seat pupils where they have the clearest view.
- Keep walkways clutter-free.
- Reduce glare; ensure lighting supports visibility.
- Use clear, high-contrast labels and signage.



ADAPT TASKS, ASSESSMENTS & TOOLS

- Allow extra time for visually demanding work.
- Provide enlarged or digital assessment formats.
- Enable accessibility tools (zoom, magnifiers, high-contrast models).
- Offer alternative formats when visual tasks create barriers.



STRENGTHEN COMMUNICATION, COLLABORATION AND INCLUSION

- Share relevant information with staff teams
- Work with the SENCO on planning and monitoring.
- Seek guidance from SEND-experienced colleagues.
- Maintain open communication with families.
- Raise awareness among peers sensitively.
- Ensure access to trips, clubs, PE, and wider opportunities.
- Promote a whole-school ethos of removing barriers.