

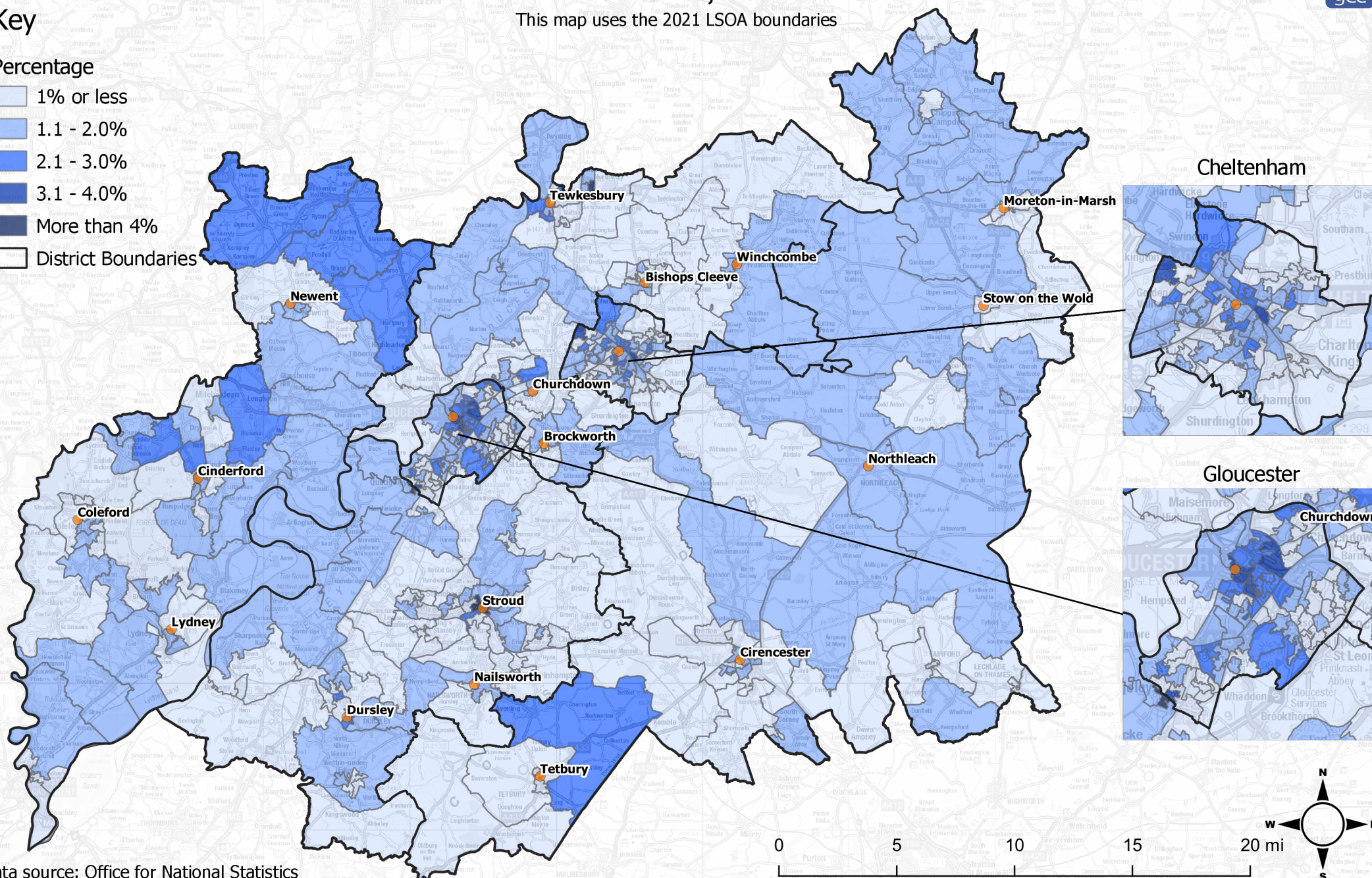
# Percentage of households with no central heating at Lower Super Output Area Level, 2021

## Key

### Percentage

- 1% or less
- 1.1 - 2.0%
- 2.1 - 3.0%
- 3.1 - 4.0%
- More than 4%
- District Boundaries

This map uses the 2021 LSOA boundaries



Data source: Office for National Statistics