



## Stop 5: August Bugs, Bees and Books

Stamp passport here  
when Destination is  
complete

Destination checklist

Book onto session

☐

Download / print  
destination activity  
pack and insert

☐

Take part in session

☐

Complete activity  
pack

☐

Share on social  
media

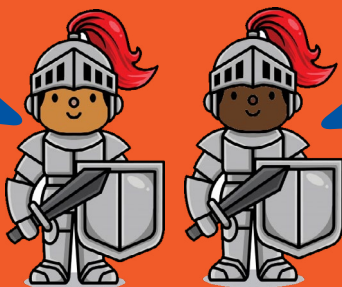
☐



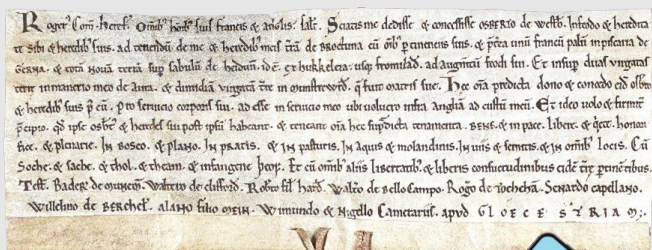
# Factfile

# A day in the life of Gloucestershire Archives

An archive is a place where historical records are stored and looked after.



At Gloucestershire Archives we have an estimated 10 million documents on 11 miles of shelving



It is written in Latin.

The word at the end  
in upper-case letters  
is GLOECESTRIAM,  
which means  
Gloucester

**This is a  
wax seal**





We often have to repair documents and also protect them from moisture.



Sometimes documents are damaged by too much heat and pests like this little chap whose favourite food is paper

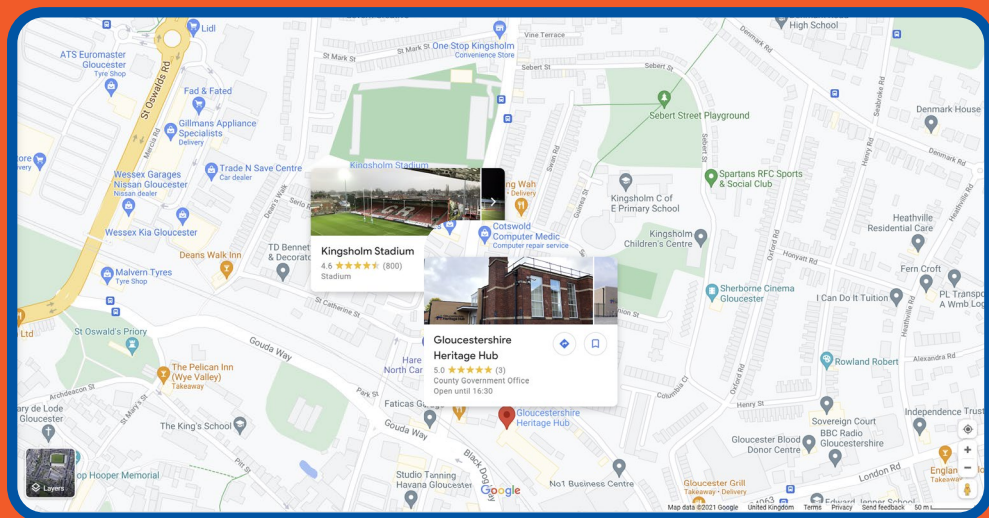


**People visit us from all over the world to find out about the history of their Gloucestershire ancestors. Sometimes writers and journalists use our resources for research.**



Our building used to be a school so the old playground gives us lots of outside space. We've turned it into a peaceful garden for our visitors to use and it's also the home of our three beehives!

# How to find us



Our Address  
Gloucestershire Archives  
Gloucestershire Heritage Hub  
Clarence Row  
Alvin St  
Gloucester  
GL1 3DW



Gloucestershire Archives  
is in Kingsholm.

Kingsholm is in the  
North-East part of the city  
of Gloucester, most famous  
as the home of Gloucester  
Rugby Club.

**Kingsholm hasn't always been part of the city  
Goucester keeps growing. Lots of places which  
used to be villages on the outskirts officially  
became part of the city in the 19th century.**

# Whats in a name?



Kingsholm sounds like the home of Kings, but 'holm' is actually an old word for land by a river.

You might be able to find out more about the name of your town, village or street.

Google is brilliant for this kind of thing!

We have lots of records in our collections about Kingsholm through the ages, including references to 'The Shadow' – a notorious highwayman who often robbed people in the area.

Do you think he could have looked like this?



Have a go at Googling the history of the town or village that you live in.

Let us know what you find out!

## Conduct your own bug audit

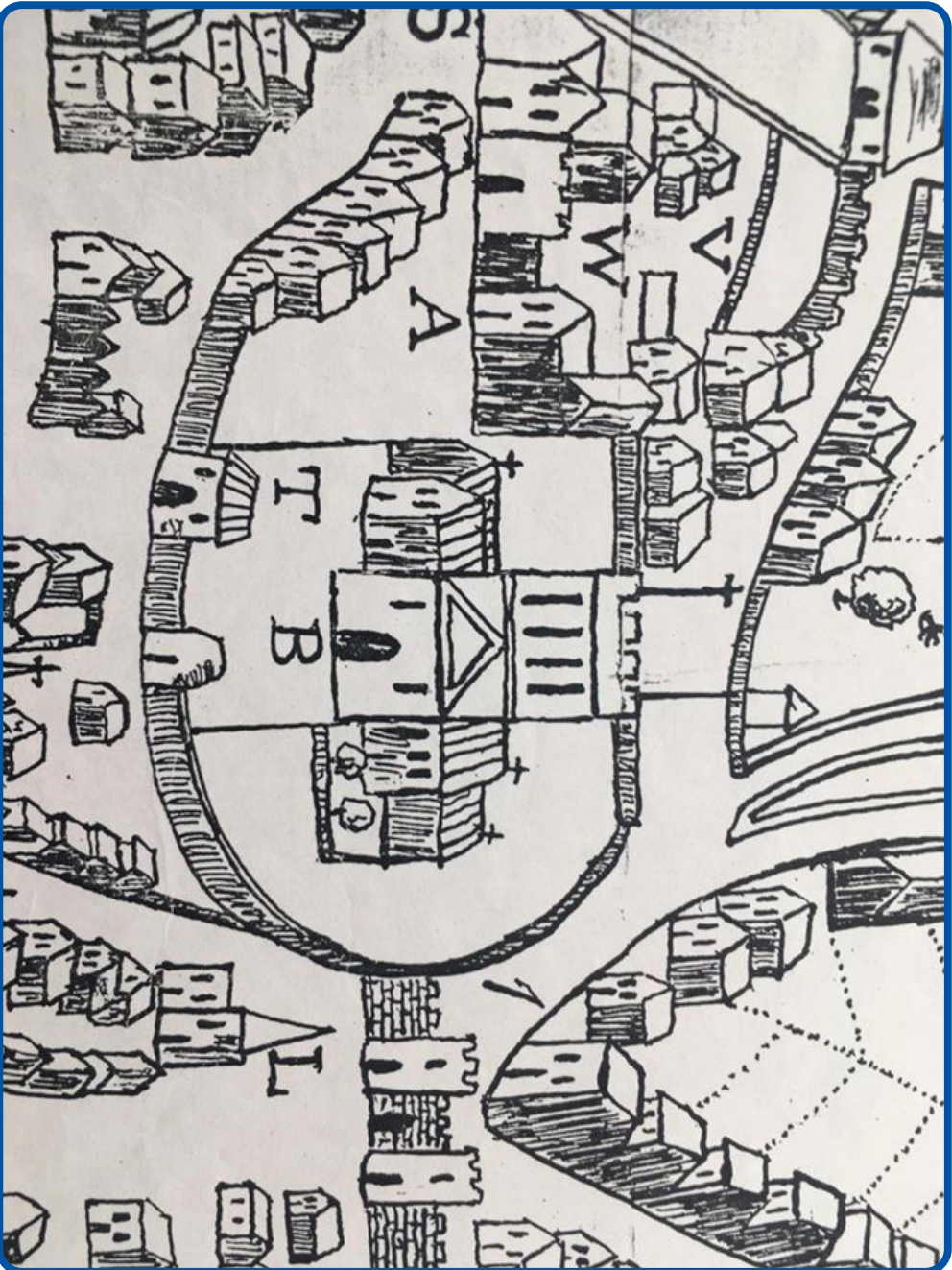


Do an audit, or make a list of all the bugs you can find in your own house or garden

[illegible]



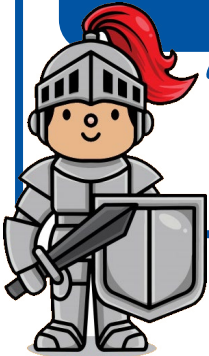
# Colour in this map of old Gloucester



# Design a map of where you live

Think about  
natural features

- Trees
- Lakes
- Hills
- Rivers
- Fields



Think about  
manufactured  
features

- Churches
- Homes
- Play-parks
- Shops
- Monuments





## The Highwayman



This is a short excerpt from a famous poem written over 100 years ago about a Highwayman.

The wind was a torrent of darkness among the gusty trees.  
The moon was a ghostly galleon tossed upon cloudy seas.  
The road was a ribbon of moonlight over the purple moor,  
And the highwayman came riding—  
Riding—riding—  
The highwayman came riding, up to the old inn-door.

He'd a French cocked-hat on his forehead, a bunch of lace at his chin,  
A coat of the claret velvet, and breeches of brown doe-skin.  
They fitted with never a wrinkle. His boots were up to the thigh.  
And he rode with a jewelled twinkle,  
His pistol butts a-twinkle,  
His rapier hilt a-twinkle, under the jewelled sky.

## Write your own poem



Write your own poem about Gloucester's own Highwayman called The Shadow.