

Unemployment Bulletin

Issue 48 July 2012

Contents

Part 1: Summary

A summary of unemployment data at district, County, regional and national level

1

Part 2: County

Unemployment figures for the County compared to the South West and the rest of the UK

3

Part 3: Districts

A comparative break down of unemployment figures by district

4

Part 4: Wards

Further breakdown of unemployment figures by ward:

Cheltenham 6

Cotswolds 8

Forest of Dean 10

Gloucester 12

Stroud 14

Tewkesbury 16

Part 5: Map

Distribution of claimant rate across Gloucestershire

18

Part 6: Young People

Data about Young People Not in Education, Employment or Training (NEET)

20

INTRODUCTION

The Unemployment Bulletin provides a monthly update on unemployment data for Gloucestershire, the South West region and the United Kingdom. It is produced by the Strategic Needs Analysis Team in the County Council's Strategy and Challenge function. The data is sourced from the Office for National Statistics via Nomis (www.nomis.co.uk).

The claimant count measures the number of people claiming unemployment-related benefit (currently Job Seeker's allowance). The claimant rate is the number of claimants as a proportion of the working age population.

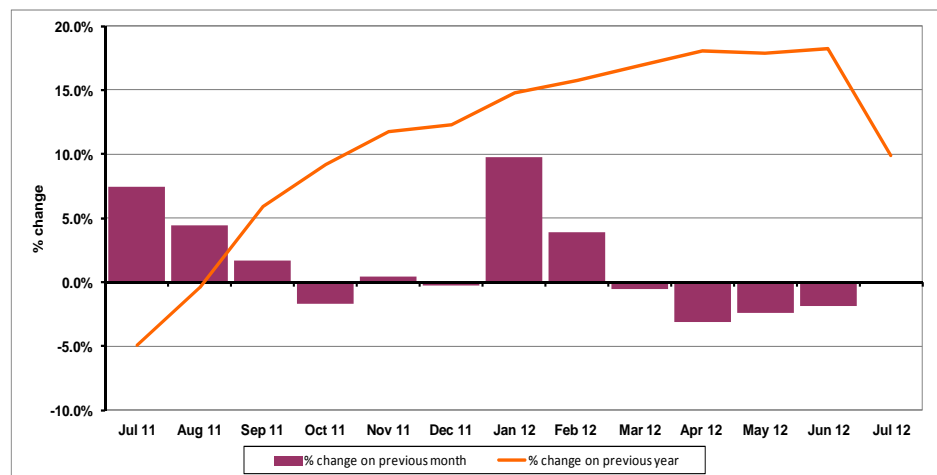
PART 1: SUMMARY

The claimant rate in Gloucestershire was 2.7% in July 2012. This was same as the June 2012 figure. The South West and UK rate also remained the same as last month at to 2.6% and 3.9% respectively. Gloucestershire's rate was 0.1% higher than the South West average of 2.6%, and 1.2% lower than the UK average of 3.9%.

The claimant count in Gloucestershire in July 2012 decreased by 12 people. The amount of people claiming in July 2012 was -0.1% lower than the number in June 2012. This compares to a -0.03% decrease in the South West and a +0.5% increase for the UK.

The year on year claimant count in Gloucestershire has decreased since last month. The count was 9.9% higher in July 2012 than at the same point in the previous year as shown in the graph below.

Gloucestershire claimants - Month on Month and Year on Year change:
July 2011 to July 2012



Source: ONS Crown Copyright Reserved

Produced by:

Strategic Needs Analysis Team
Strategy and Challenge
Gloucestershire County Council
August 2012

DISTRICTS AT A GLANCE

At a glance unemployment information grouped by district. Includes:

Claim count: Total number of people claiming Job Seekers Allowance in July 2012

Compared to last month: How much larger/smaller June's claimant count is compared to June, expressed as a %

Claimant rate: The % of working population claiming Job Seekers Allowance in July 2012

Highest claiming ward: The ward with the highest claim count in that district and the rate

CHELTENHAM BOROUGH

Claim count:	2,356
Compared to last month:	-1.3%
Claimant rate:	3.1%
Highest claiming ward	Hesters Way (6.5%)

GLOUCESTER CITY

Claim count:	3,135
Compared to last month:	+0.1%
Claimant rate:	4.1%
Highest claiming ward	Westgate (8.5%)

COTSWOLD DISTRICT

Claim count:	737
Compared to last month:	+2.8%
Claimant rate:	1.5%
Highest claiming ward	Cirencester Watermoor (4.0%)

STROUD DISTRICT

Claim count:	1,483
Compared to last month:	+1.6%
Claimant rate:	2.2%
Highest claiming ward	Slade (6.1%)

FOREST OF DEAN

Claim count:	1,399
Compared to last month:	-2.0%
Claimant rate:	2.7%
Highest claiming ward	Cinderford West (5.5%)

TEWKESBURY BOROUGH

Claim count:	1,107
Compared to last month:	+0.1%
Claimant rate:	2.2%
Highest claiming ward	Tewkesbury Prior's Park (5.1%)

YOUNG PEOPLE NOT IN EDUCATION, EMPLOYMENT OR TRAINING (NEET)

As at the end of July 2012 there were 637 young people aged 16-18 not in education, employment or training in Gloucestershire and this figure translates into an adjusted (*) 16-18 NEET population of 5.1%.

PART 2: UK, SW AND GLOUCESTERSHIRE INDICATORS

The unemployment situation in Gloucestershire compared to the South West and the UK.

Claimant Rate

Figure 1: Claimant Rate for Gloucestershire, the South West and UK over the past year

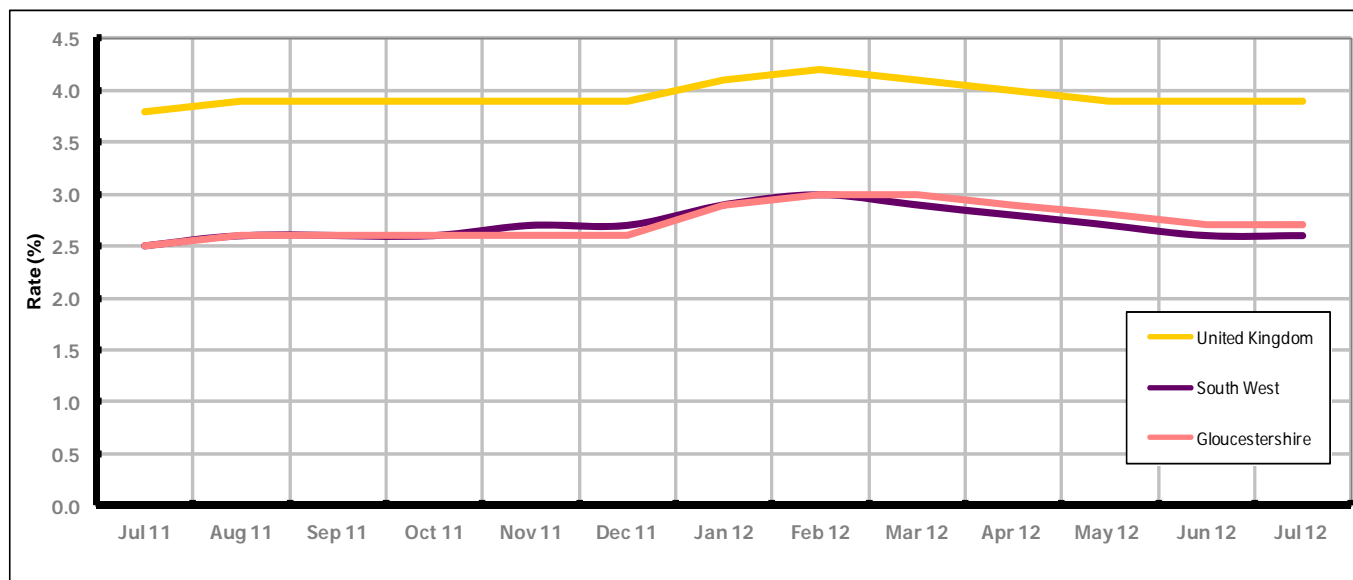


Figure 1 shows the claimant rate for Gloucestershire at 2.7% in July 2012. The rate remained lower or the same as the South West average, until March 2012, when it grew above the South West rate, it has been persistently lower by approximately 1.2% against the UK average during the same period. The July 2012 rate remained the same as last month.

Claimant Count

Table 1: Analysis of UK, South West and Gloucestershire Claimant Counts

Area	Claimant Count in July 2012	% change on June 2012	Average % change over the last six months	Consecutive months decreasing
UK	1,572,672	+0.5%	-1.2%	0
South West	86,434	-0.03%	-2.2%	4
Gloucestershire	10,217	-0.1%	-1.3%	4

Table 1 shows that in July 2012, the number of claimants in Gloucestershire was -0.1% lower than the number in June 2012.

The average change in claimants in Gloucestershire for the six months to July 2012 was -1.3%. This is 0.1% higher than the UK average and 0.9% lower than the South West average.

PART 3: LOCAL AUTHORITY DISTRICT ANALYSIS

Claimant Rate and Claimant Count

Figure 2: Claimant Rate (%) across Gloucestershire - July 2012

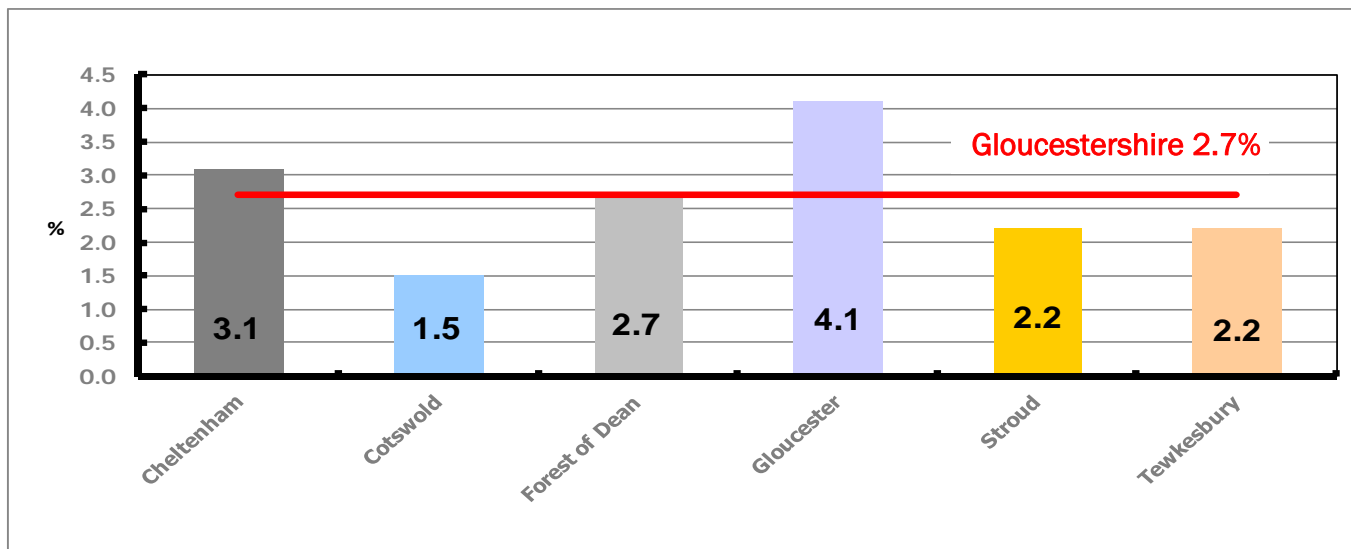


Figure 2 shows the claimant rate for July 2012 in Gloucestershire. Between June 2012 and July 2012 the rate in Cheltenham and Forest of Dean district declined, Gloucester and Tewkesbury remained the same, while Cotswold and Stroud saw an increase.

Figure 3: Total claimants over the past year across Gloucestershire Districts

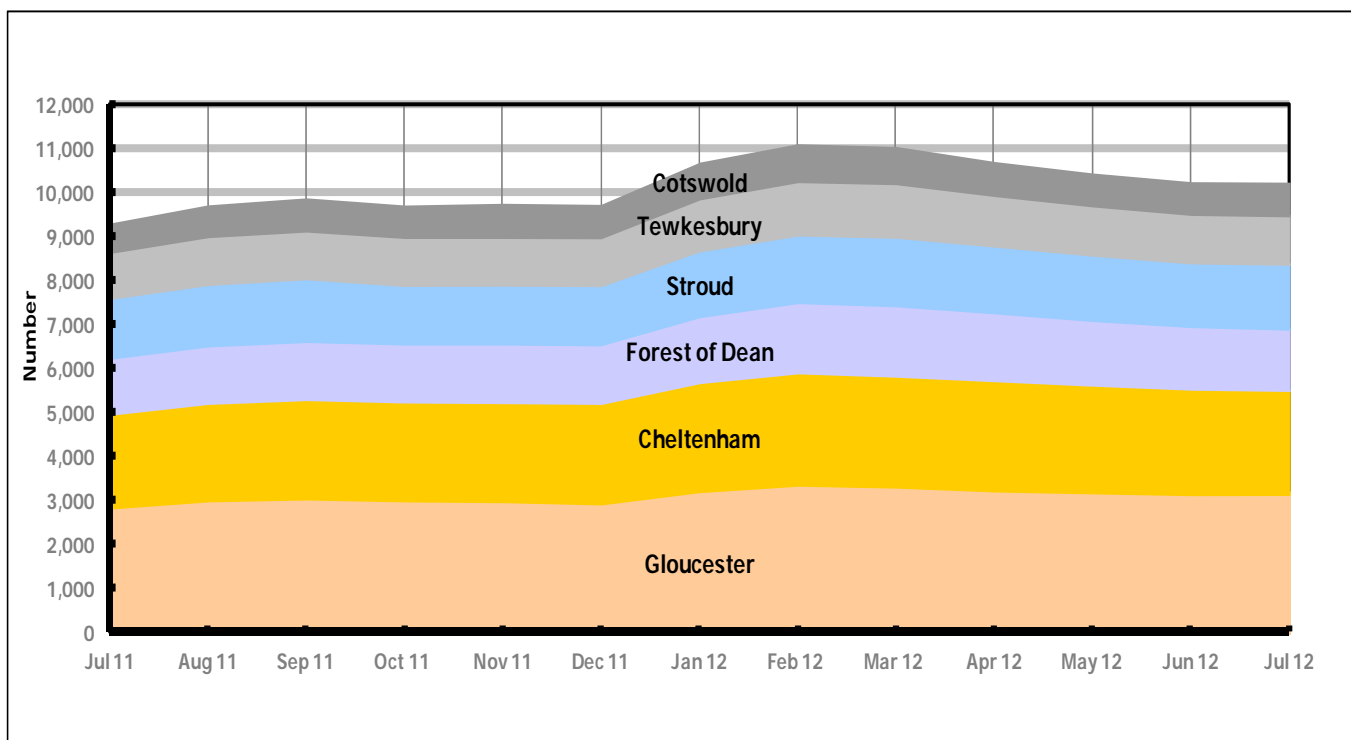


Figure 3 shows the overall claimant count by district over the past year. The number of claimants generally increased between July 2011 and February 2012. Since March 2012 the number of claimants has decreased.

Table 2: Analysis of Gloucestershire and District Claimant Counts

Total	Jul 12 Number	Jul 12 Rate	Jun 12 Number	Jun 12 Rate	Monthly change	% monthly change	Monthly change of rate
Gloucestershire	10,217	2.7	10,229	2.7	-12	-0.1%	0.0
Cheltenham	2,356	3.1	2,386	3.2	-30	-1.3%	-0.1
Cotswold	737	1.5	717	1.4	20	2.8%	0.1
Forest of Dean	1,399	2.7	1,428	2.8	-29	-2.0%	-0.1
Gloucester	3,135	4.1	3,133	4.1	2	0.1%	0.0
Stroud	1,483	2.2	1,459	2.1	24	1.6%	0.1
Tewkesbury	1,107	2.2	1,106	2.2	1	0.1%	0.0

Table 2 shows the change in the claimant count in July 2012 compared to June 2012. Cheltenham and Forest of Dean experienced a decrease in the number of claimants while the remaining districts saw an increase.

Table 3: Analysis of Male Gloucestershire and District Claimant Counts

Male	Jul 12 Number	Jul 12 Rate	Jun 12 Number	Jun 12 Rate	Monthly change	% monthly change	Monthly change of rate
Gloucestershire	6,859	3.7	6,969	3.7	-110	-1.6%	0.0
Cheltenham	1,618	4.3	1,649	4.3	-31	-1.9%	0.0
Cotswold	484	1.9	477	1.9	7	1.5%	0.0
Forest of Dean	956	3.7	987	3.8	-31	-3.1%	-0.1
Gloucester	2,096	5.5	2,141	5.6	-45	-2.1%	-0.1
Stroud	992	2.9	981	2.9	11	1.1%	0.0
Tewkesbury	713	2.9	734	2.9	-21	-2.9%	0.0

Table 3 shows the change in the male claimant count in July 2012 compared to June 2012. Cotswold and Stroud saw an increase in the number of male claimants while the remaining districts experienced a decline.

Table 4: Analysis of Female Gloucestershire and District Claimant Counts

Female	Jul 12 Number	Jul 12 Rate	Jun 12 Number	Jun 12 Rate	Monthly change	% monthly change	Monthly change of rate
Gloucestershire	3,358	1.8	3,260	1.7	98	3.0%	0.1
Cheltenham	738	2.0	737	2.0	1	0.1%	0.0
Cotswold	253	1.0	240	0.9	13	5.4%	0.1
Forest of Dean	443	1.7	441	1.7	2	0.5%	0.0
Gloucester	1,039	2.7	992	2.6	47	4.7%	0.1
Stroud	491	1.4	478	1.4	13	2.7%	0.0
Tewkesbury	394	1.5	372	1.5	22	5.9%	0.0

Table 4 shows the change in the female claimant count in July 2012 compared to June 2012. All districts experienced an increase in the number of female claimants.

PART 4: LOCAL AUTHORITY DISTRICT AND WARD ANALYSIS

This section covers the six districts and a comparison of their constituent wards.

4.1 Cheltenham Borough

Claimant Rate and Claimant Count

Figure 4: Cheltenham Borough claimant rate over the last year

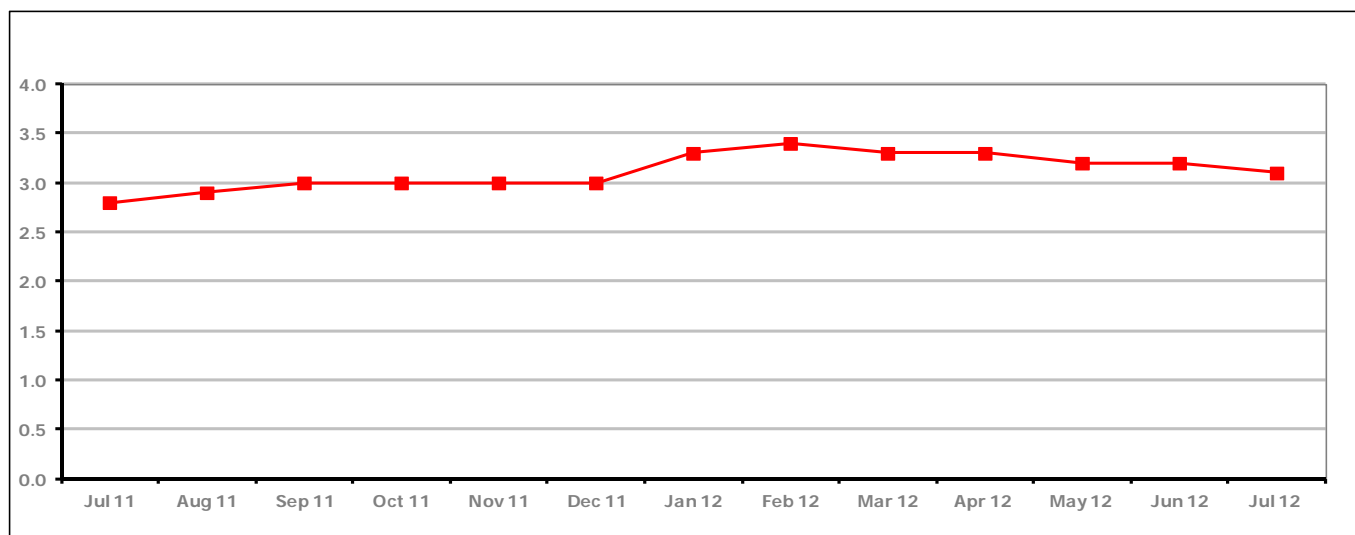


Figure 4 shows the claimant rate in Cheltenham decreased in July 2012 to 3.1%.

Figure 5: Cheltenham Borough claimants - Month on Month and Year on Year change

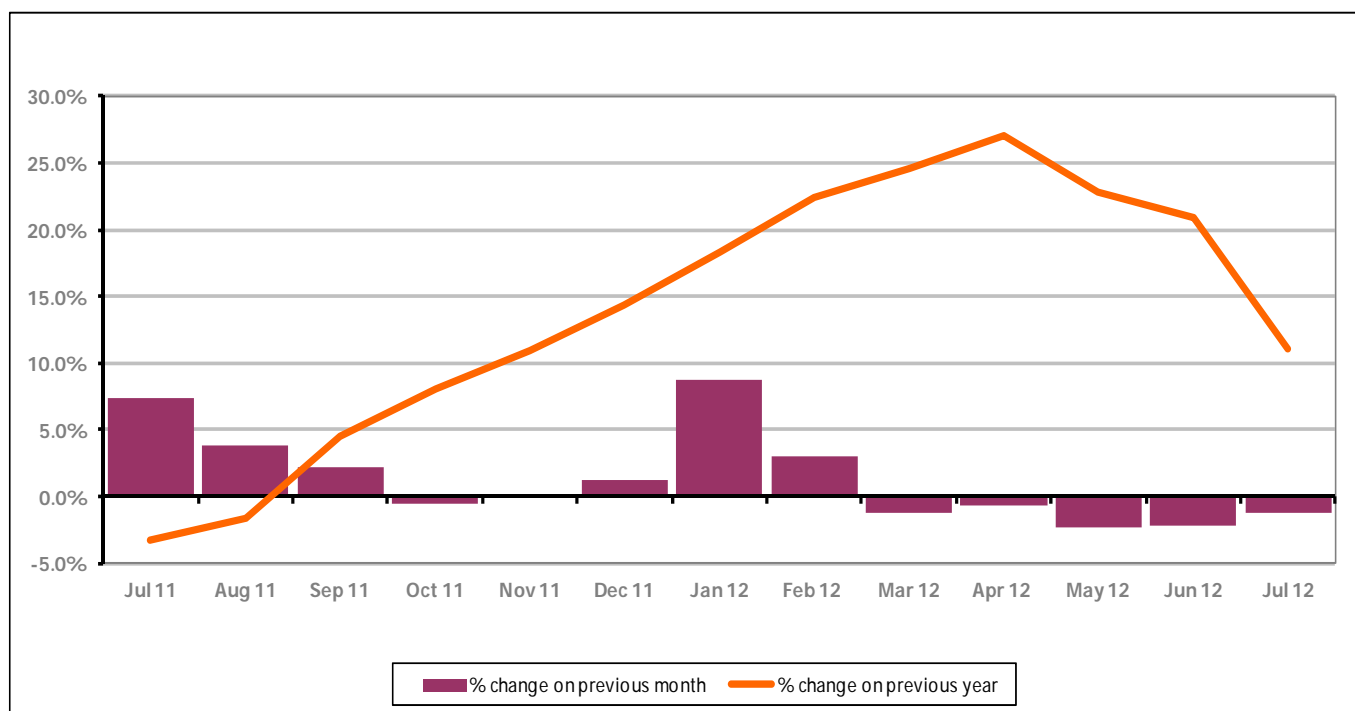


Figure 5 shows the claimant count decreased by -1.3% since last month. The change on the previous year has decreased in July 2012 compared to June 2012 to +11.1%.

PART 4: LOCAL AUTHORITY DISTRICT AND WARD ANALYSIS

4.1 Cheltenham Borough continued...

Figure 6: Claimant rates across Cheltenham Borough wards - July 2012

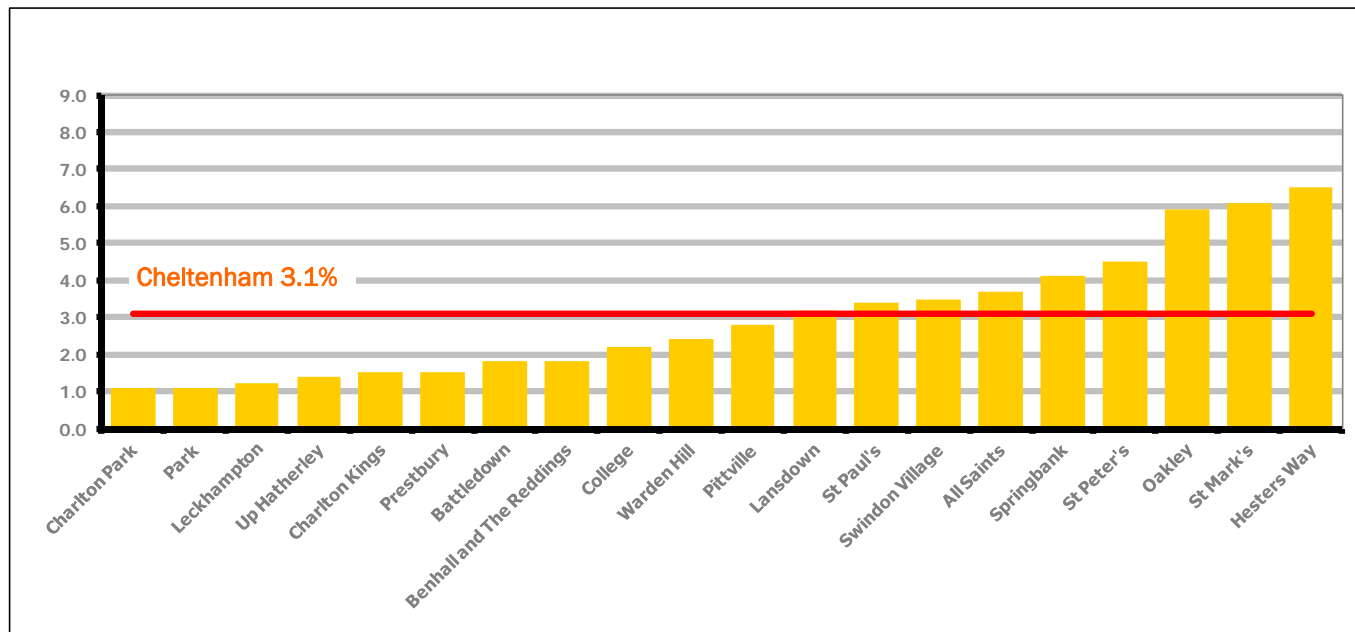
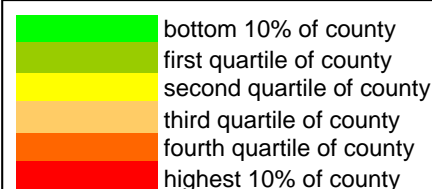


Figure 6 shows the claimant rates for Cheltenham Borough wards. The red line represents the average claimant rate across the Borough of 3.1%. Nine wards lie above the average.

Table 5: Analysis of Claimant Count at Cheltenham Borough ward level - July 2012

District	Ward	Rate	Rank*
Cheltenham	Charlton Park	1.1	21
Cheltenham	Park	1.1	21
Cheltenham	Leckhampton	1.2	28
Cheltenham	Up Hatherley	1.4	41
Cheltenham	Charlton Kings	1.5	49
Cheltenham	Prestbury	1.5	49
Cheltenham	Battledown	1.8	71
Cheltenham	Benhall and The Reddings	1.8	71
Cheltenham	College	2.2	84
Cheltenham	Warden Hill	2.4	87
Cheltenham	Pittville	2.8	97
Cheltenham	Lansdown	3.2	110
Cheltenham	St Paul's	3.4	113
Cheltenham	Swindon Village	3.5	116
Cheltenham	All Saints	3.7	118
Cheltenham	Springbank	4.1	123
Cheltenham	St Peter's	4.5	128
Cheltenham	Oakley	5.9	135
Cheltenham	St Mark's	6.1	137
Cheltenham	Hesters Way	6.5	140



* 1 = "best" and 142 = "worst"

Table 5 shows overall claimant rates for Cheltenham Borough wards and their position relative to all wards in Gloucestershire.

PART 4: LOCAL AUTHORITY DISTRICT AND WARD ANALYSIS

4.2 Cotswold District

Claimant Rate and Claimant Count

Figure 7: Cotswold District claimant rate over the last year

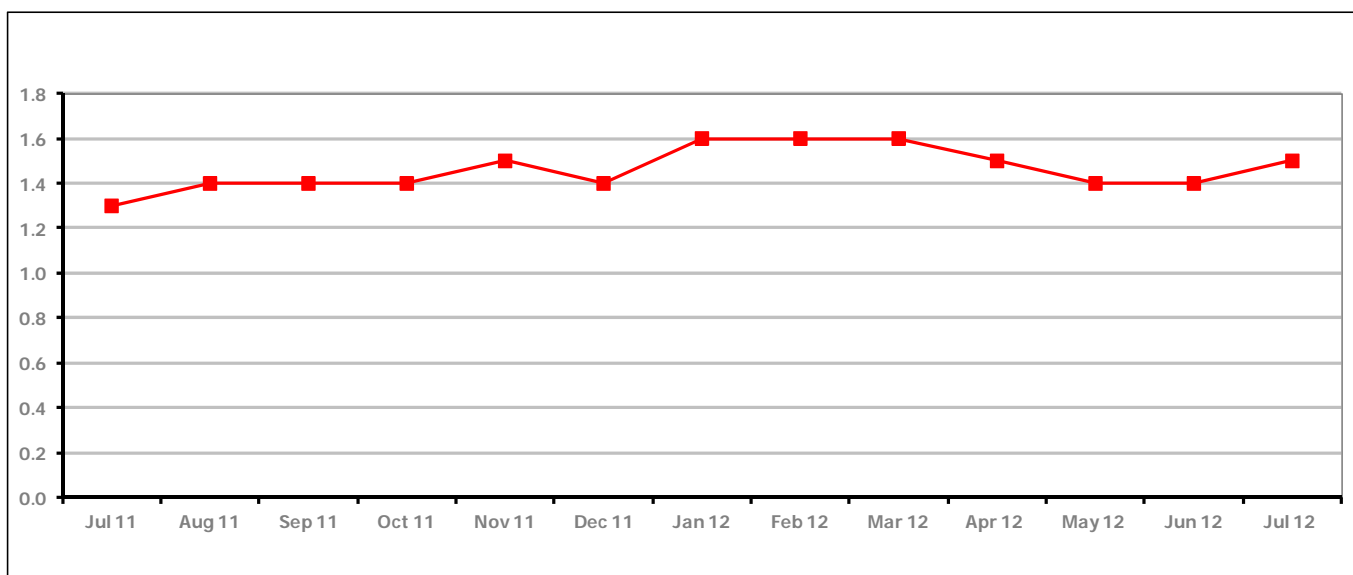


Figure 7 shows the claimant rate in Cotswold District increased in July 2012 to 1.5%.

Figure 8: Cotswold District claimants - Month on Month and Year on Year change

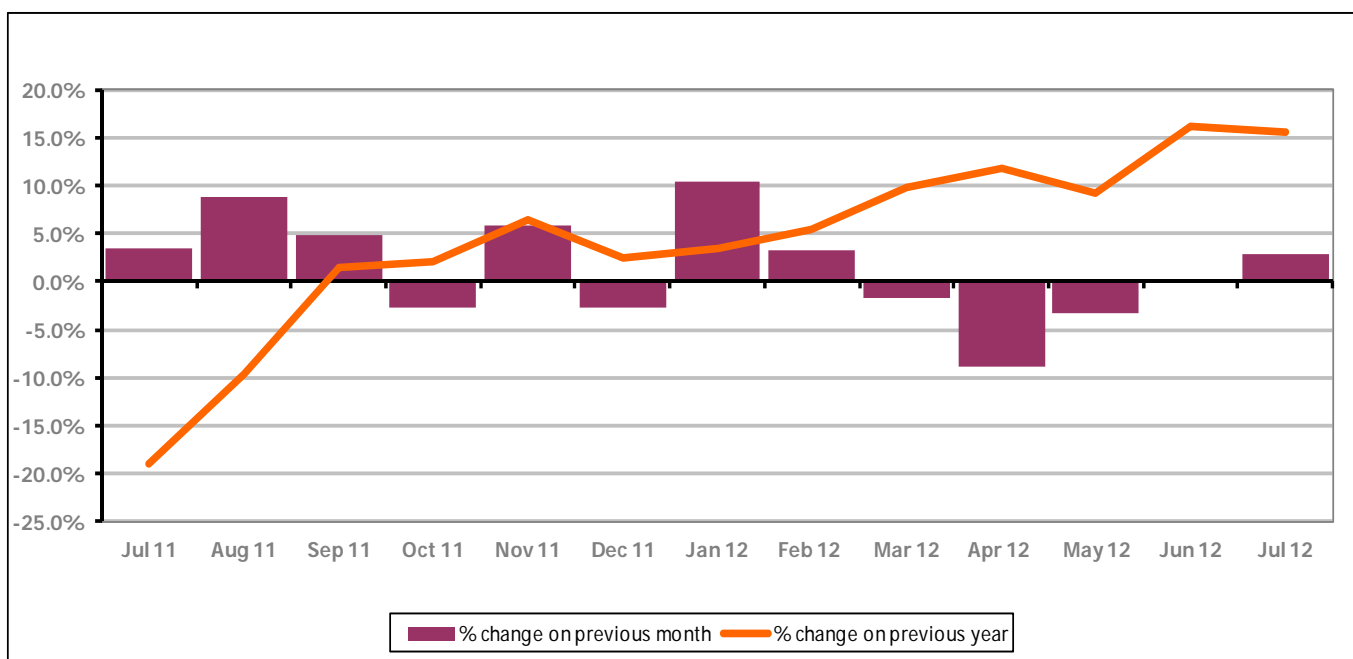


Figure 8 shows the claimant count increased by +2.8% since June 2012. The change on the previous year has decreased from June 2012 compared to July 2012 to +15.5%.

PART 4: LOCAL AUTHORITY DISTRICT AND WARD ANALYSIS

4.2 Cotswold District continued...

Figure 9: Claimant rates across Cotswold District wards - July 2012

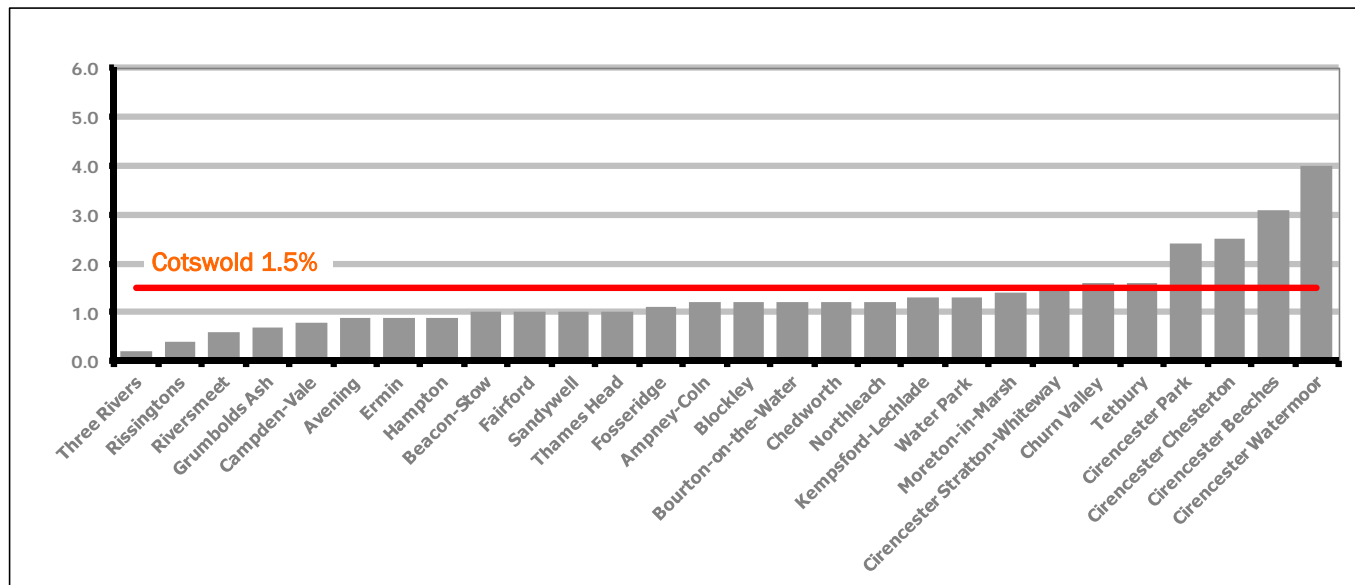
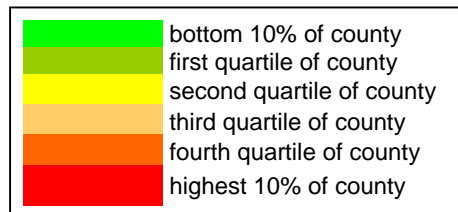


Figure 9 shows the claimant rates for Cotswold District wards. The red line represents the average claimant rate across the District of 1.5%. Six wards lie above the average.

Table 6: Analysis of Claimant Count at Cotswold District ward level - July 2012

District	Ward	Rate	Rank*
Cotswolds	Three Rivers	0.2	1
Cotswolds	Rissingtons	0.4	2
Cotswolds	Riversmeet	0.6	3
Cotswolds	Grumbolds Ash	0.7	9
Cotswolds	Campden-Vale	0.8	11
Cotswolds	Avening	0.9	13
Cotswolds	Ermin	0.9	13
Cotswolds	Hampton	0.9	13
Cotswolds	Beacon-Stow	1.0	16
Cotswolds	Fairford	1.0	16
Cotswolds	Sandywell	1.0	16
Cotswolds	Thames Head	1.0	16
Cotswolds	Fosseridge	1.1	21
Cotswolds	Ampney-Coln	1.2	28
Cotswolds	Blockley	1.2	28
Cotswolds	Bourton-on-the-Water	1.2	28
Cotswolds	Chedworth	1.2	28
Cotswolds	Northleach	1.2	28
Cotswolds	Kempsford-Lechlade	1.3	37
Cotswolds	Water Park	1.3	37
Cotswolds	Moreton-in-Marsh	1.4	41
Cotswolds	Cirencester Stratton-Whiteway	1.5	49
Cotswolds	Churn Valley	1.6	60
Cotswolds	Tetbury	1.6	60
Cotswolds	Cirencester Park	2.4	87
Cotswolds	Cirencester Chesterton	2.5	93
Cotswolds	Cirencester Beeches	3.1	109
Cotswolds	Cirencester Watermoor	4.0	121



* 1 = "best" and 142 = "worst"

Table 6 shows overall claimant rates for Cotswold District wards and their position relative to all wards in Gloucestershire.

PART 4: LOCAL AUTHORITY DISTRICT AND WARD ANALYSIS

4.3 Forest of Dean District

Claimant Rate and Claimant Count

Figure 10: Forest of Dean District claimant rate over the last year

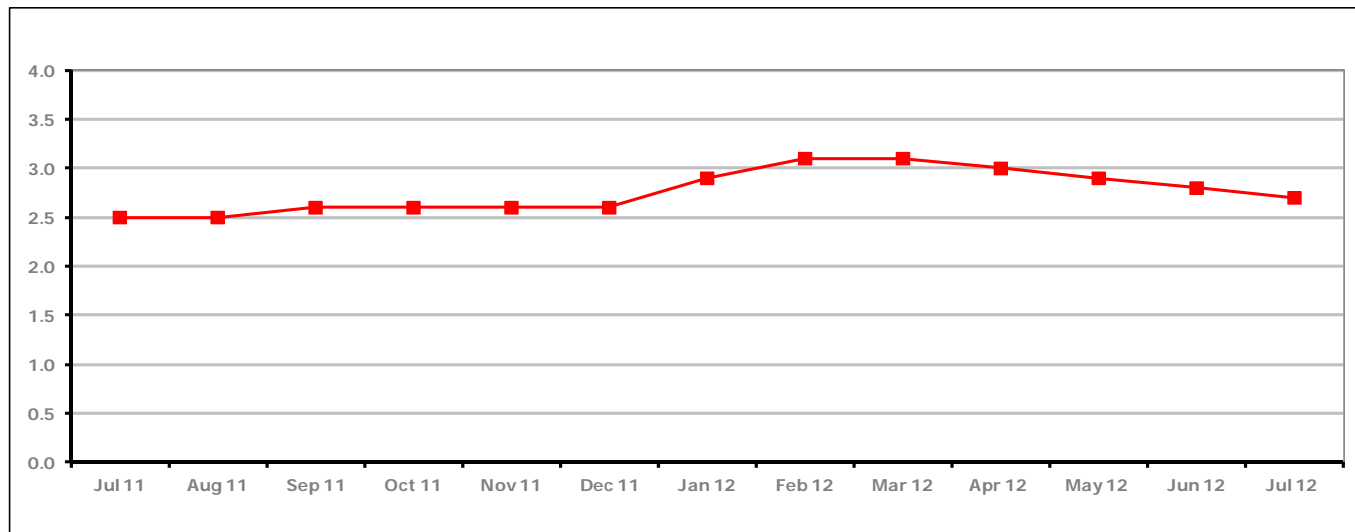


Figure 10 shows the claimant rate in the Forest of Dean decreased in July 2012 to 2.7%

Figure 11: Forest of Dean District claimants - Month on Month and Year on Year change

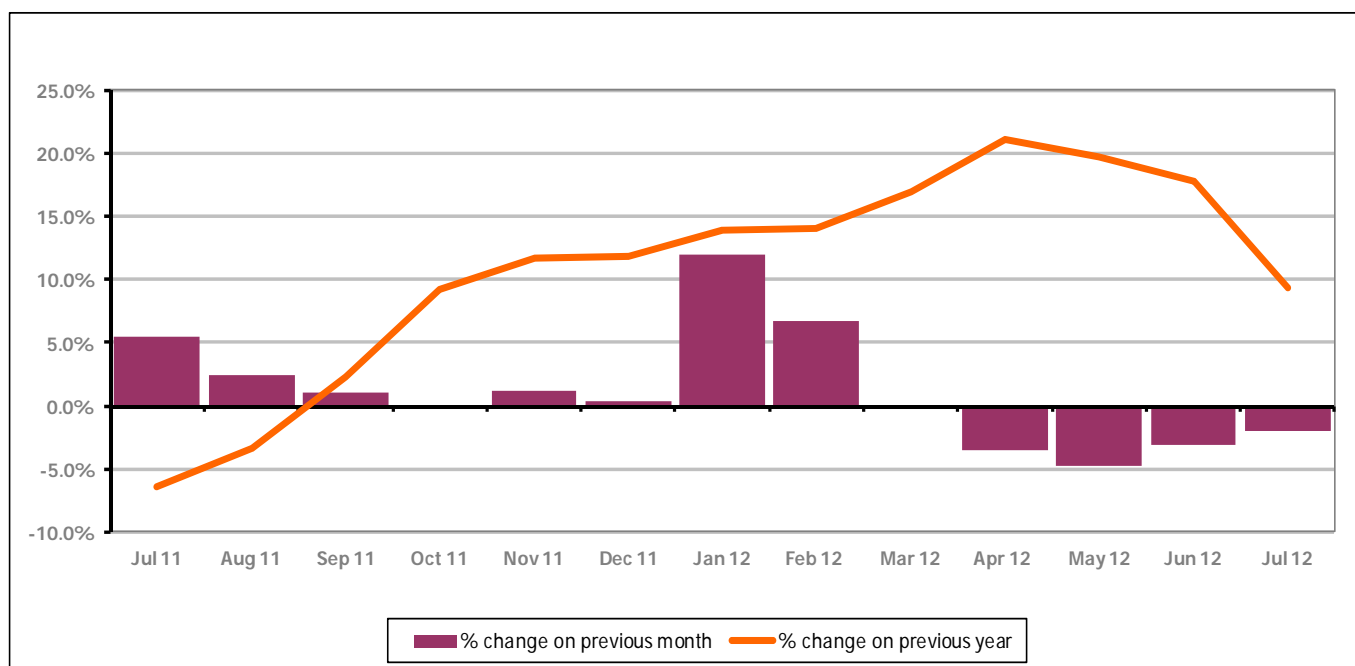


Figure 11 shows the claimant count decreased by -2.0% since June 2012. The change on the previous year has decreased from June 2012 compared to July 2012 to +9.3%.

PART 4: LOCAL AUTHORITY DISTRICT AND WARD ANALYSIS

4.3 Forest of Dean District continued...

Figure 12: Claimant rates across Forest of Dean District wards - July 2012

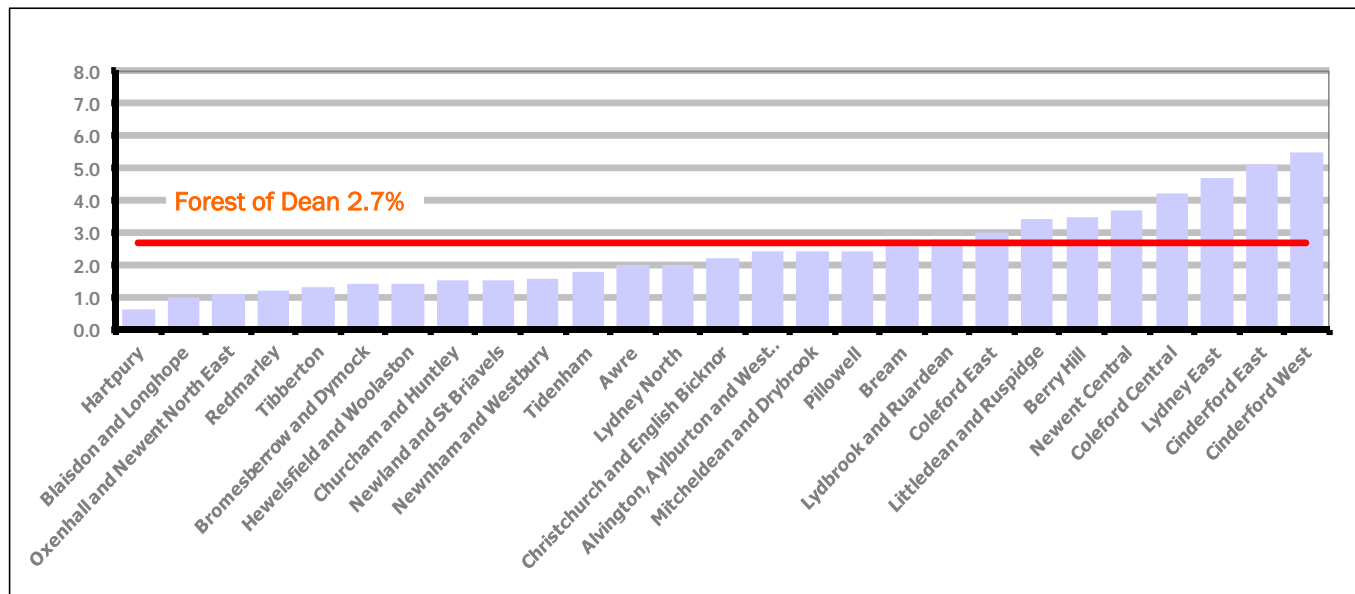
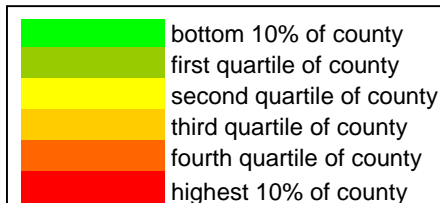


Figure 12 shows the claimant rates for Forest of Dean District wards. The red line represents the average claimant rate across the District of 2.7 %. Ten wards lie above the average.

Table 7: Analysis of Claimant Count at Forest of Dean District ward level - July 2012

District	Ward	Rate	Rank*
Forest	Hartpury	0.6	3
Forest	Blaisdon and Longhope	1.0	16
Forest	Oxenhall and Newent North East	1.1	21
Forest	Redmarley	1.2	28
Forest	Tibberton	1.3	37
Forest	Bromesberrow and Dymock	1.4	41
Forest	Hewelsfield and Woolaston	1.4	41
Forest	Churcham and Huntley	1.5	49
Forest	Newland and St Briavels	1.5	49
Forest	Newnham and Westbury	1.6	60
Forest	Tidenham	1.8	71
Forest	Awre	2.0	78
Forest	Lydney North	2.0	78
Forest	Christchurch and English Bicknor	2.2	84
Forest	Alvington, Aylburton and West Lydney	2.4	87
Forest	Mitcheldean and Drybrook	2.4	87
Forest	Pillowell	2.4	87
Forest	Bream	2.8	97
Forest	Lydbrook and Ruardean	2.8	97
Forest	Coleford East	3.0	108
Forest	Littledean and Ruspidge	3.4	113
Forest	Berry Hill	3.5	116
Forest	Newent Central	3.7	118
Forest	Coleford Central	4.2	126
Forest	Lydney East	4.7	129
Forest	Cinderford East	5.1	130
Forest	Cinderford West	5.5	133



* 1 = "best" and 142 = "worst"

Table 7 shows overall claimant rates for the Forest of Dean District wards and their position relative to all wards in Gloucestershire.

PART 4: LOCAL AUTHORITY DISTRICT AND WARD ANALYSIS

4.4 Gloucester City

Claimant Rate and Claimant Count

Figure 13: Gloucester City claimant rate over the last year

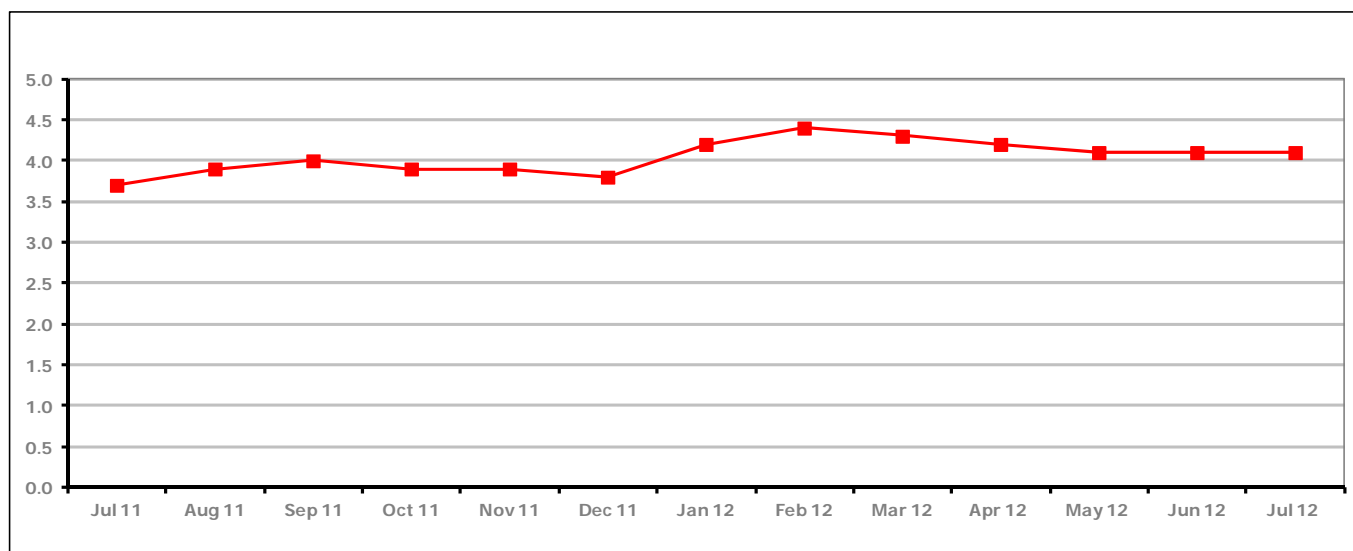


Figure 13 shows the claimant rate for Gloucester City remained the same as the last two months at 4.1%.

Figure 14: Gloucester City claimants - Month on Month and Year on Year change

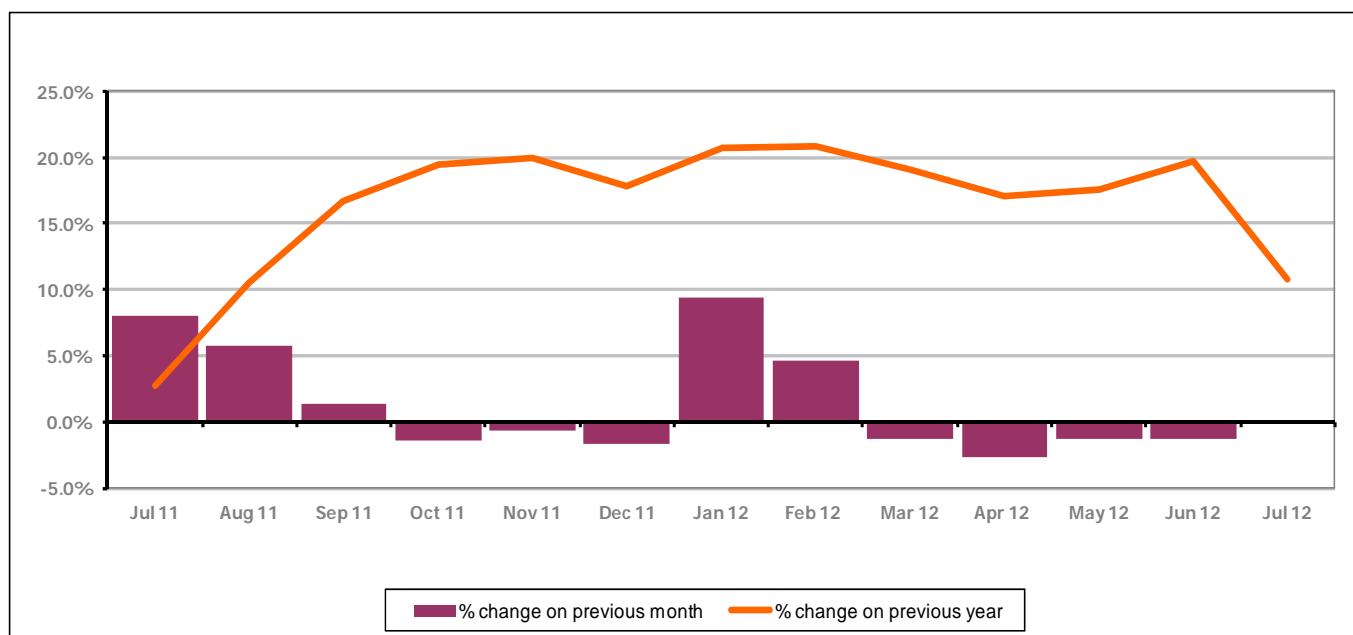


Figure 14 shows the monthly claimant count increased by +0.1% since June 2012. The change on the previous year has decreased from June 2012 compared to July 2012 to +10.8%.

PART 4: LOCAL AUTHORITY DISTRICT AND WARD ANALYSIS

4.4 Gloucester City continued...

Figure 15: Claimant rates across Gloucester City wards - July 2012

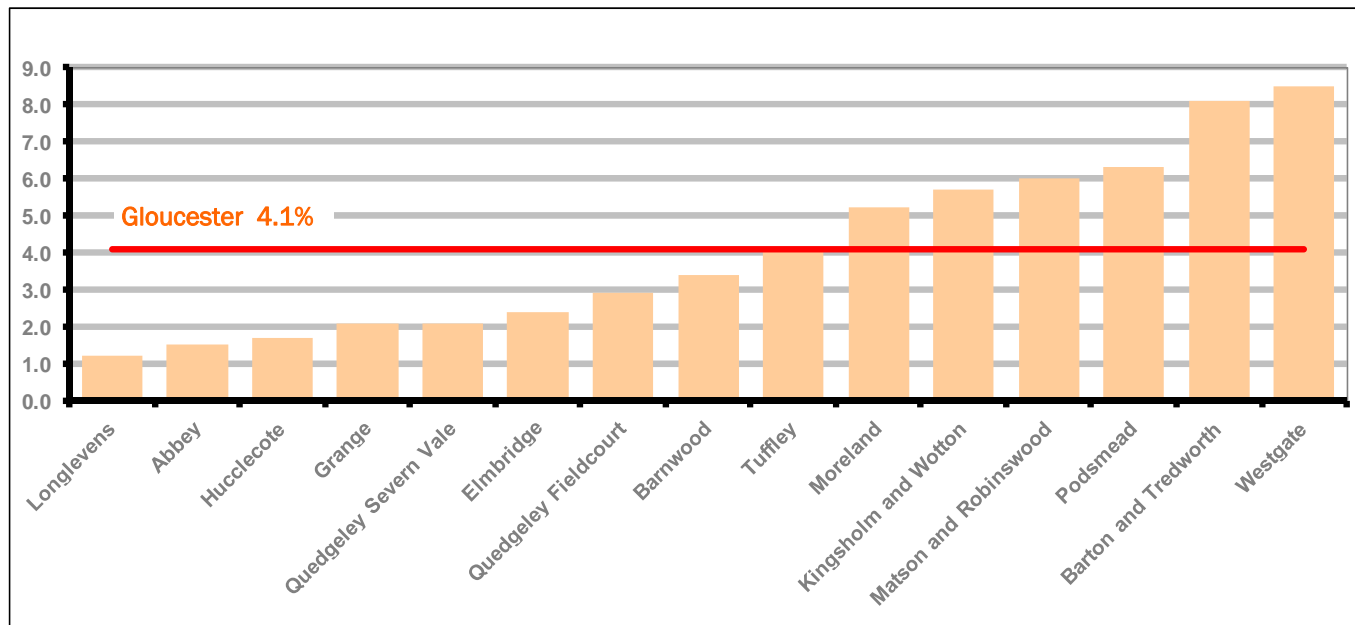
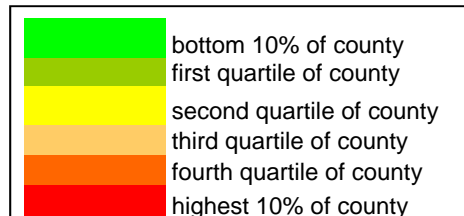


Figure 15 shows the claimant rates for Gloucester City district wards. The red line represents the average claimant rate across the City of 4.1%. Six wards lie above the average.

Table 8: Analysis of Claimant Count at Gloucester City ward level - July 2012

District	Ward	Rate	Rank*
Gloucester	Longlevens	1.2	28
Gloucester	Abbey	1.5	49
Gloucester	Hucclecote	1.7	66
Gloucester	Grange	2.1	80
Gloucester	Quedgeley Severn Vale	2.1	80
Gloucester	Elmbridge	2.4	87
Gloucester	Quedgeley Fieldcourt	2.9	104
Gloucester	Barnwood	3.4	113
Gloucester	Tuffley	4.1	123
Gloucester	Moreland	5.2	132
Gloucester	Kingsholm and Wotton	5.7	134
Gloucester	Matson and Robinswood	6.0	136
Gloucester	Podsmead	6.3	139
Gloucester	Barton and Tredworth	8.1	141
Gloucester	Westgate	8.5	142



* 1 = "best" and 142 = "worst"

Table 8 shows overall claimant rates for Gloucester City wards and their position relative to all wards in Gloucestershire.

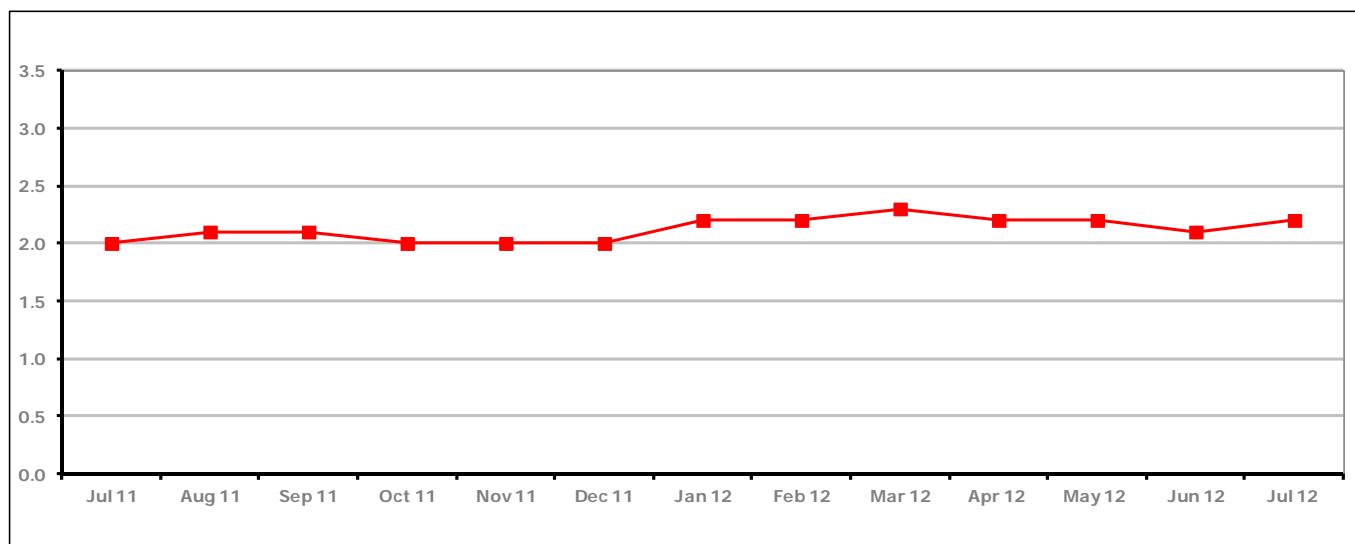
PART 4: LOCAL AUTHORITY DISTRICT AND WARD ANALYSIS**4.5 Stroud District****Claimant Rate and Claimant Count***Figure 16: Stroud District claimant rate over the last year*

Figure 16 shows the claimant rate for Stroud District increased in July 2012 to 2.2%.

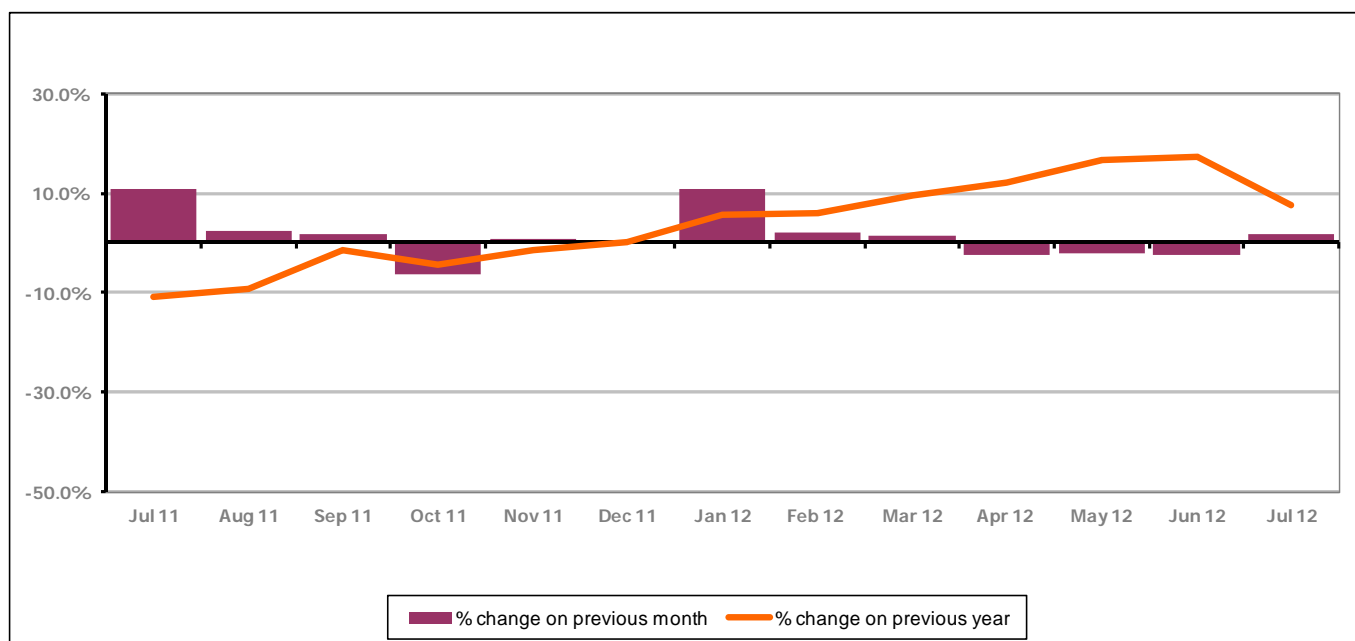
Figure 17: Stroud District claimants - Month on Month and Year on Year change

Figure 17 shows the monthly claimant count increased by +1.6% since June 2012. The change on the previous year has decreased between June 2012 and July 2012 to +7.5%.

PART 4: LOCAL AUTHORITY AND DISTRICT ANALYSIS

4.5 Stroud District continued...

Figure 18: Claimant rates across Stroud District wards - July 2012

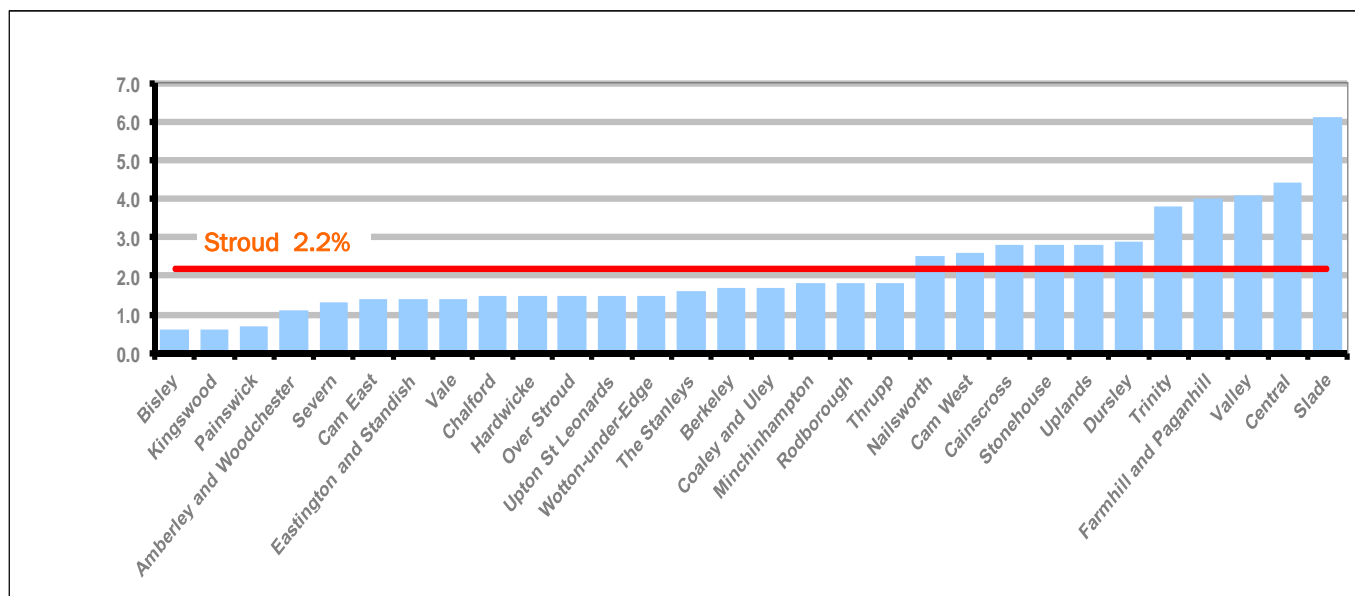
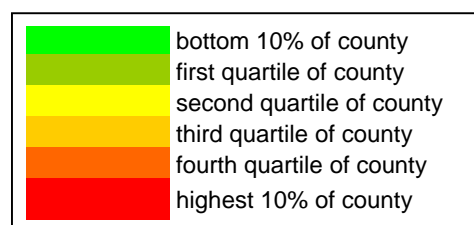


Figure 18 shows the claimant rates in Stroud District wards. The red line represents the average claimant rate across the District of 2.2%. Eleven wards are above the average.

Table 9: Analysis of Claimant Count at Stroud District ward level - July 2012

District	Ward	Rate	Rank*
Stroud	Bisley	0.6	3
Stroud	Kingswood	0.6	3
Stroud	Painswick	0.7	9
Stroud	Amberley and Woodchester	1.1	21
Stroud	Severn	1.3	37
Stroud	Cam East	1.4	41
Stroud	Eastington and Standish	1.4	41
Stroud	Vale	1.4	41
Stroud	Chalford	1.5	49
Stroud	Hardwicke	1.5	49
Stroud	Over Stroud	1.5	49
Stroud	Upton St Leonards	1.5	49
Stroud	Wotton-under-Edge	1.5	49
Stroud	The Stanleys	1.6	60
Stroud	Berkeley	1.7	66
Stroud	Coaley and Uley	1.7	66
Stroud	Minchinhampton	1.8	71
Stroud	Rodborough	1.8	71
Stroud	Thrupp	1.8	71
Stroud	Nailsworth	2.5	93
Stroud	Cam West	2.6	95
Stroud	Cainscross	2.8	97
Stroud	Stonehouse	2.8	97
Stroud	Uplands	2.8	97
Stroud	Dursley	2.9	104
Stroud	Trinity	3.8	120
Stroud	Farmhill and Paganhill	4.0	121
Stroud	Valley	4.1	123
Stroud	Central	4.4	127
Stroud	Slade	6.1	137



* 1 = "best" and 142 = "worst"

Table 9 shows overall claimant rates for Stroud District wards and their position relative to all wards in Gloucestershire.

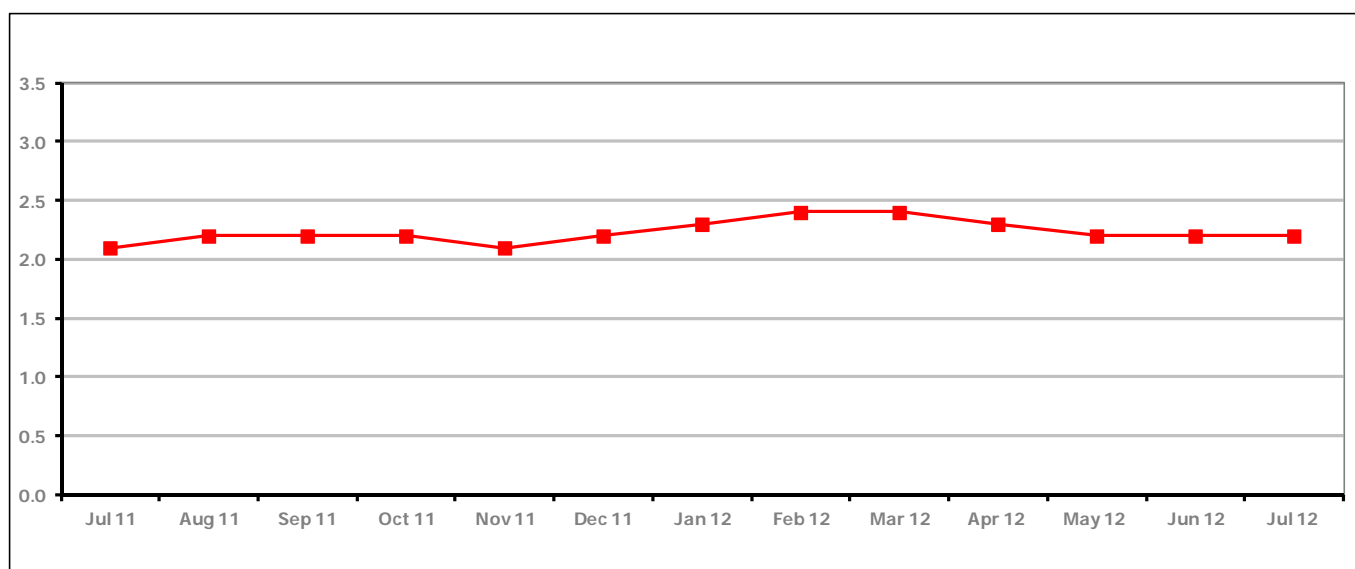
PART 4: LOCAL AUTHORITY DISTRICT AND WARD ANALYSIS**4.6 Tewkesbury District****Claimant Rate and Claimant Count***Figure 19: Tewkesbury District claimant rate over the last year*

Figure 19 shows the claimant rate for Tewkesbury District remained the same as the last two months at 2.2%

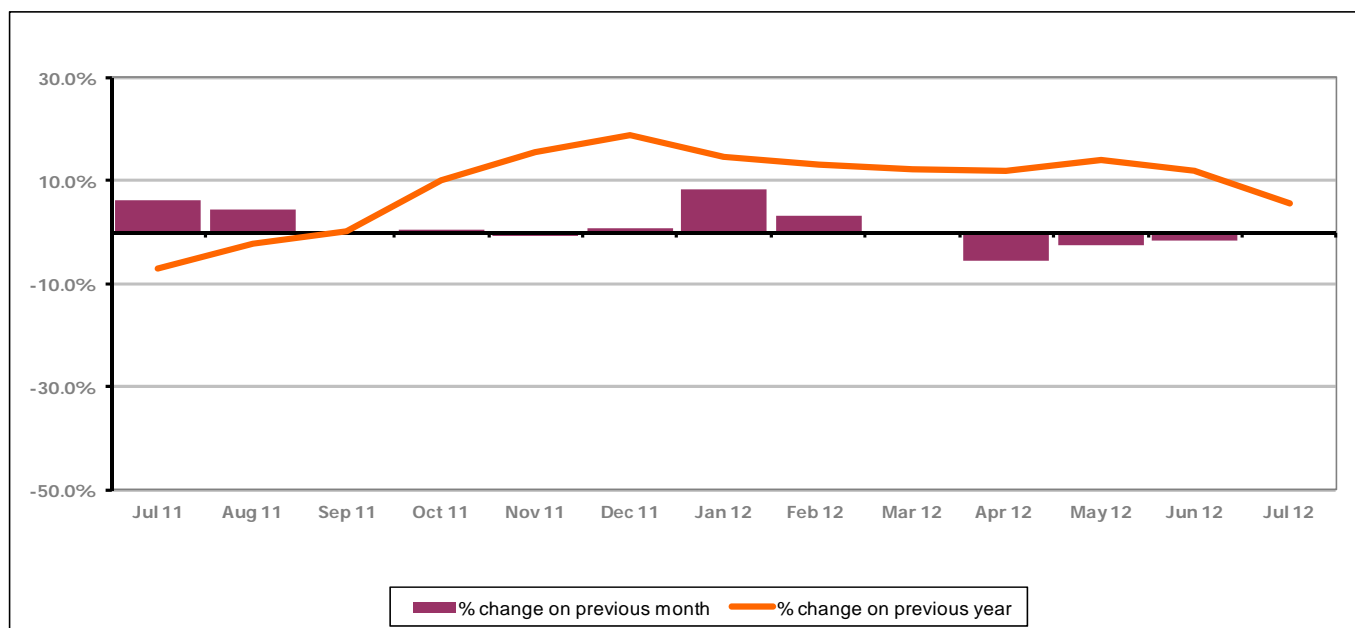
Figure 20: Tewkesbury District claimants - Month on Month and Year on Year change

Figure 20 shows that the monthly claimant count increased in July 2012 by +0.1%. The change on the previous year decreased between June 2012 and July 2012 to +5.7%.

PART 4: LOCAL AUTHORITY AND DISTRICT ANALYSIS

4.6 Tewkesbury District continued...

Figure 21: Claimant rates across Tewkesbury District wards - July 2012

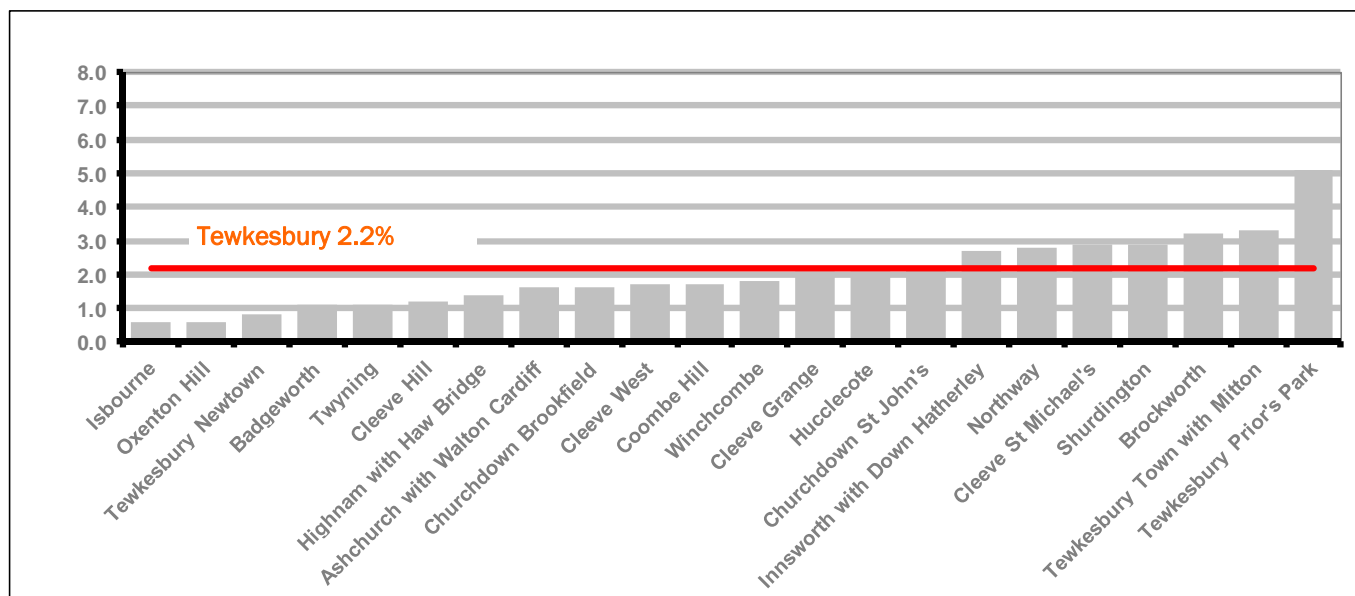
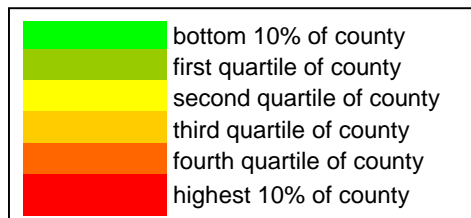


Figure 21 shows the claimant rates in Tewkesbury District wards. The red line represents the average claimant rate across the District of 2.2% and seven wards are above the average.

Table 10: Analysis of Claimant Count at Tewkesbury District level - July 2012

District	Ward	Rate	Rank*
Tewkesbury	Isbourne	0.6	3
Tewkesbury	Oxenton Hill	0.6	3
Tewkesbury	Tewkesbury Newtown	0.8	11
Tewkesbury	Badgeworth	1.1	21
Tewkesbury	Twynning	1.1	21
Tewkesbury	Cleeve Hill	1.2	28
Tewkesbury	Highnam with Haw Bridge	1.4	41
Tewkesbury	Ashchurch with Walton Cardiff	1.6	60
Tewkesbury	Churchdown Brookfield	1.6	60
Tewkesbury	Cleeve West	1.7	66
Tewkesbury	Coombe Hill	1.7	66
Tewkesbury	Winchcombe	1.8	71
Tewkesbury	Cleeve Grange	2.1	80
Tewkesbury	Hucclecote	2.1	80
Tewkesbury	Churchdown St John's	2.2	84
Tewkesbury	Innsworth with Down Hatherley	2.7	96
Tewkesbury	Northway	2.8	97
Tewkesbury	Cleeve St Michael's	2.9	104
Tewkesbury	Shurdington	2.9	104
Tewkesbury	Brockworth	3.2	110
Tewkesbury	Tewkesbury Town with Mitton	3.3	112
Tewkesbury	Tewkesbury Prior's Park	5.1	130

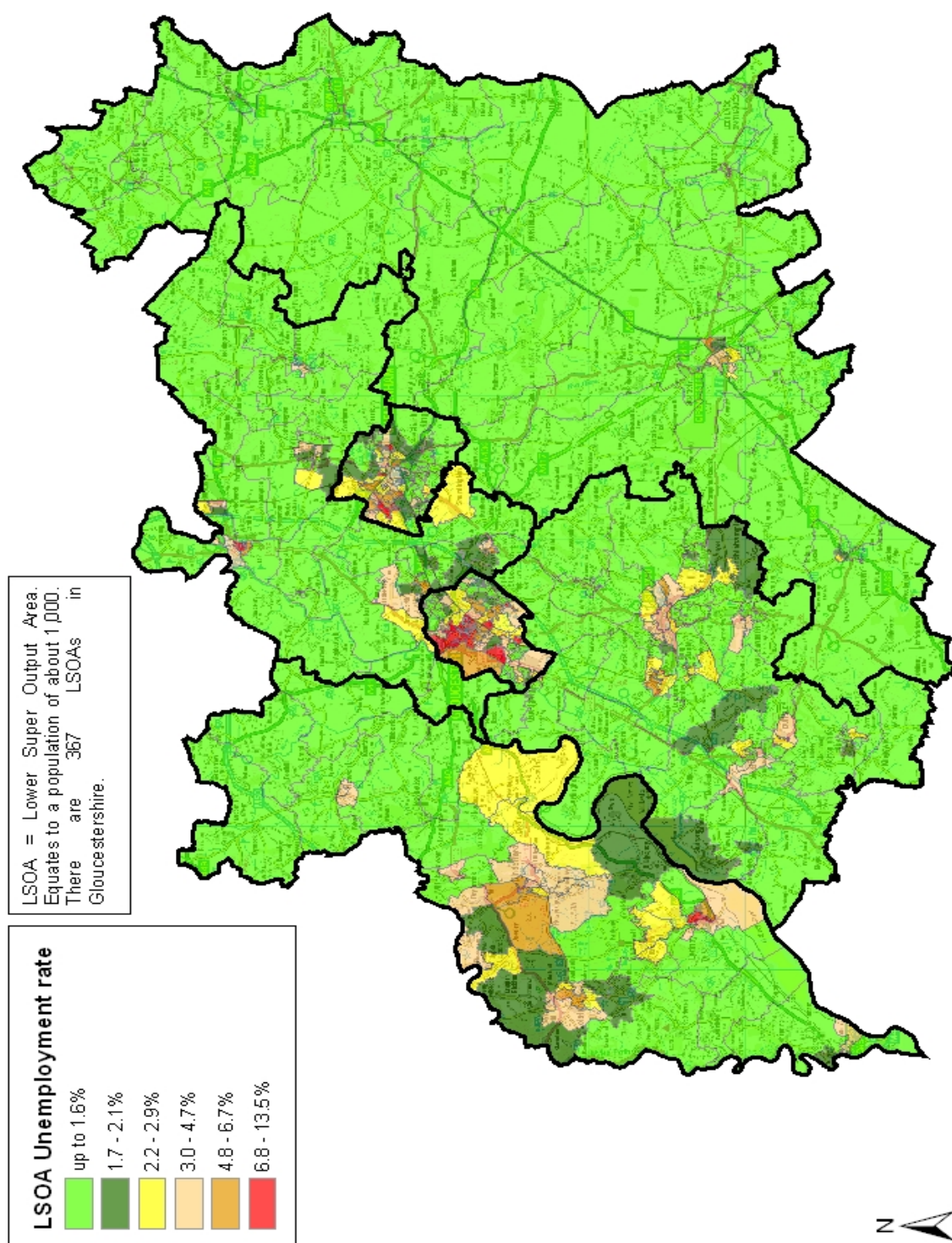


* 1 = "best" and 142 = "worst"

Table 10 shows overall claimant rates for Tewkesbury District wards and their position relative to all wards in Gloucestershire.

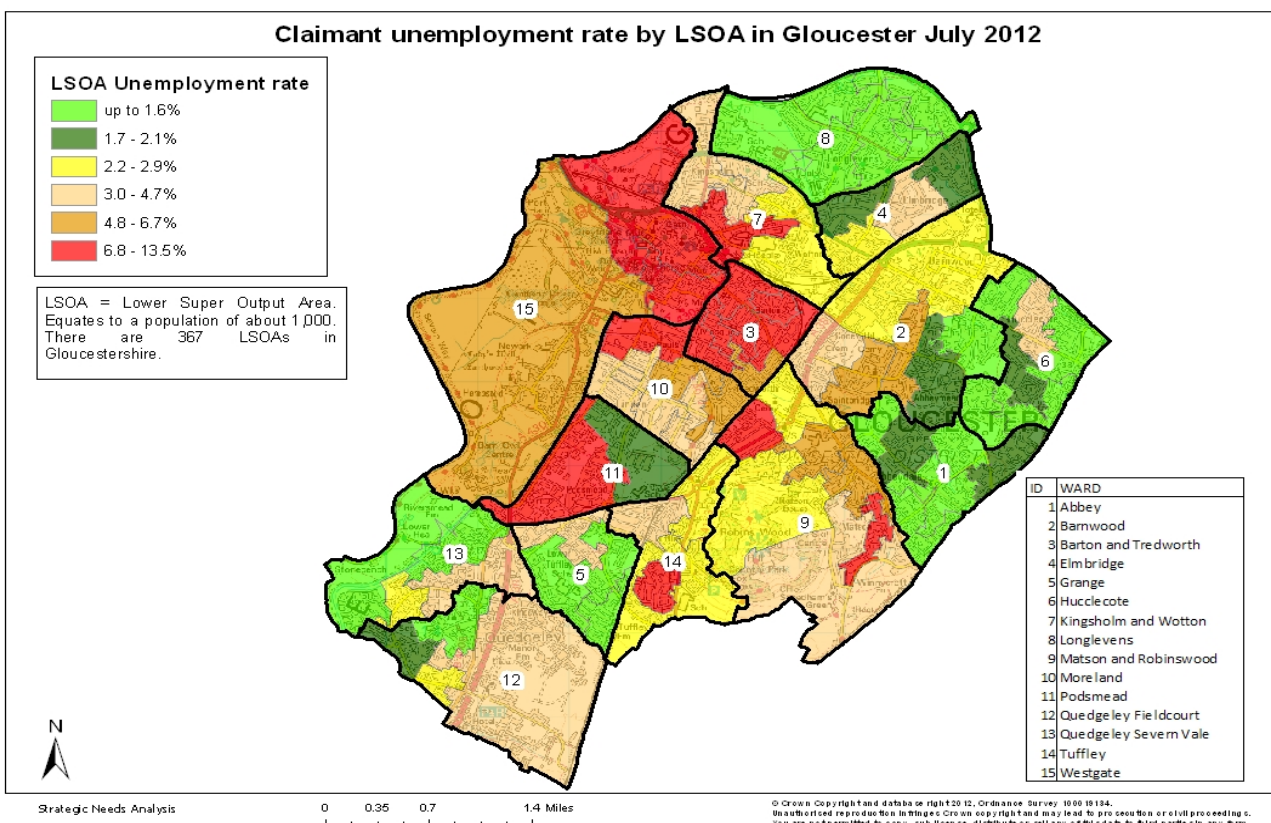
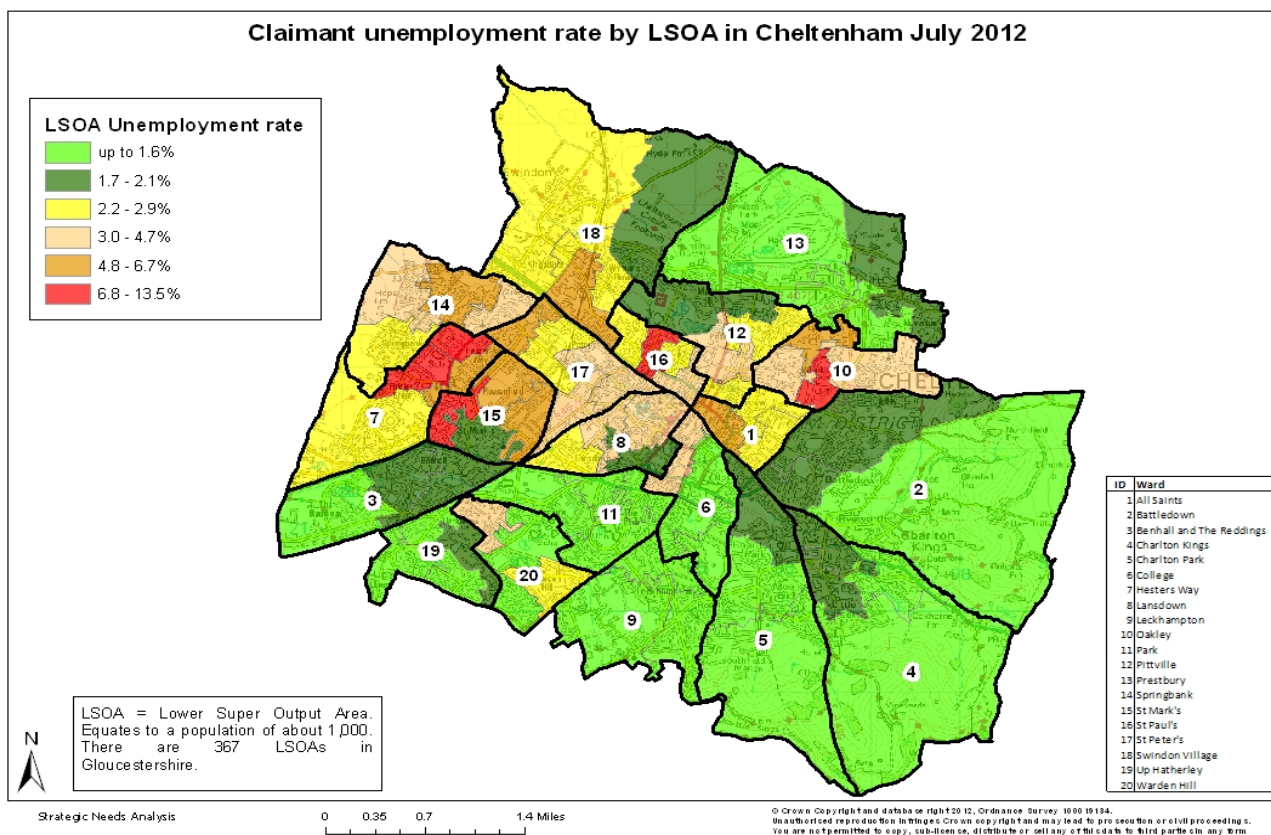
PART 5: MAP SHOWING DISTRIBUTION OF CLAIMANT RATE ACROSS GLOUCESTERSHIRE

Claimant unemployment rate by LSOA in Gloucestershire July 2012



© Crown Copyright and database right 2012. Ordnance Survey 100016134.
Unauthorized reproduction in any form or by any means without the permission of the copyright owner is prohibited. You are not permitted to copy, distribute or display this data in any form.

PART 5: MAP SHOWING DISTRIBUTION OF CLAIMANT RATE ACROSS GLOUCESTERSHIRE



PART 6: YOUNG PEOPLE NOT IN EDUCATION, EMPLOYMENT OR TRAINING (NEET) IN GLOUCESTERSHIRE

Data provided by Prospects, the Connexions service in Gloucestershire on the situation of young people (16-18) in Gloucestershire who are not in education, employment or formal training.

Connexions Gloucestershire is required to report performance with the 16-18 age range against nationally defined criteria for counting the NEET group. The NEET group includes young people actively seeking education, employment or training as well as those young people who are either not yet ready or who are unable to access these opportunities because of their personal circumstances. The figures quoted below include young people in both of these categories.

Summary

As at the end of July 2012 there were 637 young people aged 16-18 not in education, employment or training in Gloucestershire and this figure translates into an adjusted (*) 16-18 NEET population of 5.1%. The total number of NEET increased by 2 young people in July 2012 compared to June 2012. 3 districts saw an increase and 3 saw a decrease in their NEET figure.

Total NEET Group by District Area

July 2012 NEET data

	Cheltenham	Cotswold	Forest	Gloucester	Stroud	Tewkesbury	Total
Number of NEET	143	62	74	212	88	58	637
Cohort	2193	1730	1895	3872	2325	1552	13567
% NEET	6.5%	3.6%	3.9%	5.5%	3.8%	3.7%	5.1%

If you would like to receive any further information on Gloucestershire's NEET strategy then please contact Ruth.Critchlow@gloucestershire.gov.uk or telephone 01452 551267.

(*) Adjustment includes a proportion of young people aged 16-18 whose outcomes are not-known to Connexions Gloucestershire