

Works Area

The south side of Kimbrose Way and west side of Southgate Street will be closed off to allow for kerb realignment, construction of the new cycleway, paving and application of demarcation strips to new Cycle Improvement scheme design.

To keep traffic flowing near the temporary traffic signals, bus stops on Southgate Street may be temporarily suspended or relocated.

In **week nineteen (STC)** there will be a **full closure** of Kimbrose Junction to facilitate the relocation of existing street lighting columns and to apply high friction surfacing.

Use of temporary three-way traffic signals and barriers used to provide segregation between works area and third parties.

Localised pedestrian management used to accommodate foot-traffic during the installation of new tactile paving. Pedestrian route anticipated to be maintained to west of works area along existing footpath.

Southgate St

Parliament St

Traffic to other areas of Southgate Street and adjoining roads to remain unaffected.

Indicates the approximate placement of cones & barriers

MONTEL
CIVIL ENGINEERING

Gloucester City Centre Cycle Improvements

Southgate Street
Weeks Thirteen to Twenty-One (STC)

Traffic to other areas of Commercial Road, Kimbrose Way, Parliament Street and Southgate Street and adjoining roads to remain unaffected.

Pedestrian crossing points to be formed through the use of traffic cones – at agreed locations – with pedestrians required to use existing footpath on west of Southgate Street to proceed with their journey.

No traffic management in use that will affect road users.

Southgate St

Parliament St

Works Area

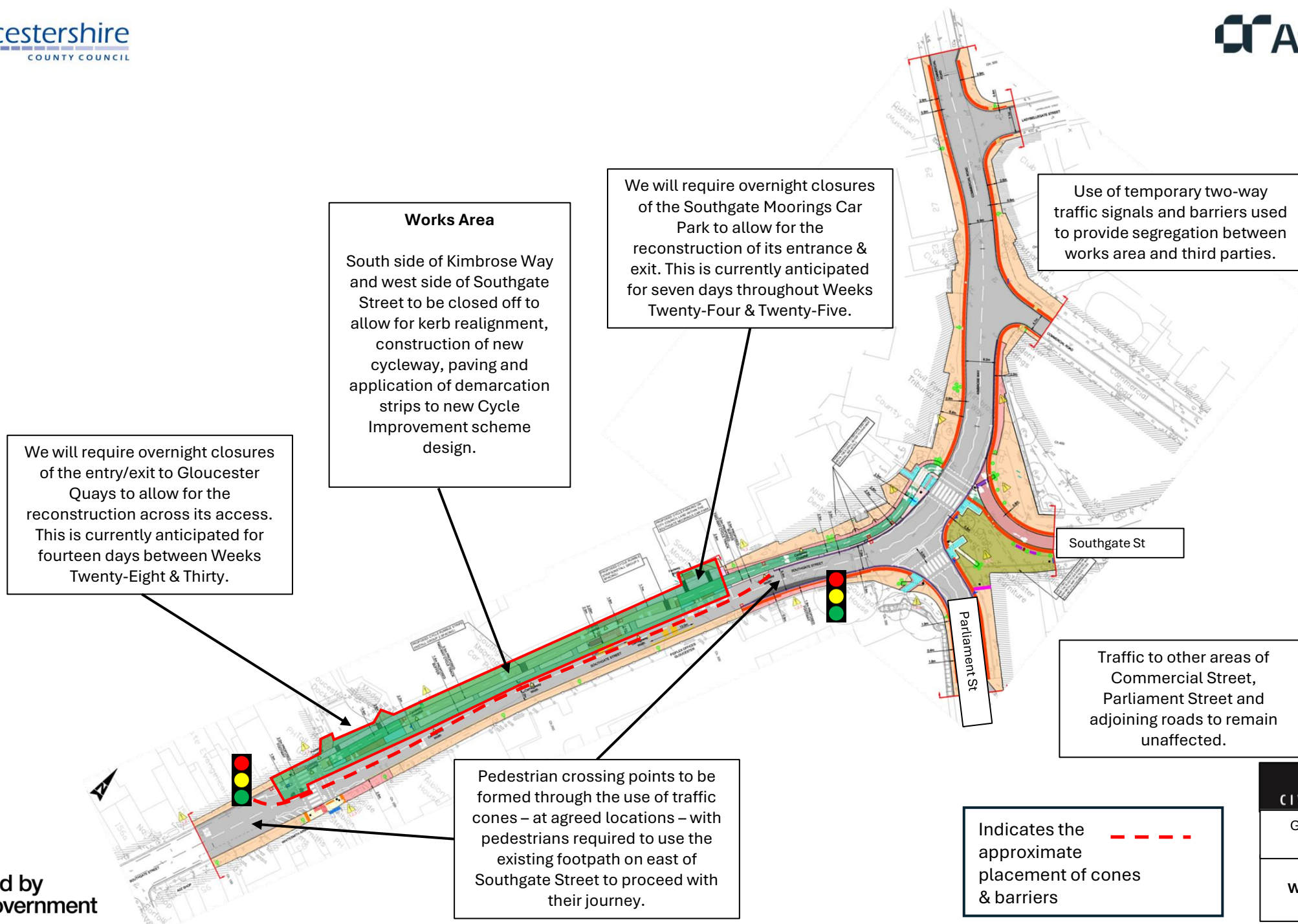
East side of Southgate Street to be closed off to allow for kerb replacement, construction of new pedestrian crossing, and paving to new Cycle Improvement scheme design.

Indicates the approximate placement of cones & barriers

MONTEL
CIVIL ENGINEERING

Gloucester City Centre Cycle Improvements

Southgate Street
Weeks Twenty-Two & Twenty-Three (STC)



MONTEL
CIVIL ENGINEERING

Gloucester City Centre Cycle Improvements

Southgate Street
Weeks Twenty-Four to Thirty (STC)