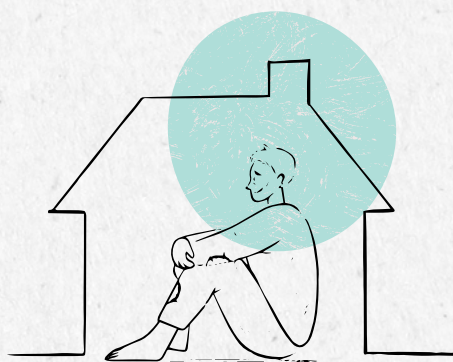
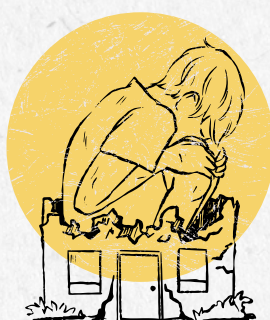


Exploring the psychological impact of transitions within education for Children in Care and children and young people with a Social Worker



This course aims to support multi-agency professional services and social workers to consider the psychological impact of transition in Children in Care or with a Social Worker

- Understanding the range of transitions a YP may experience in relation to their learning
- Have an awareness of the psychological impact of transition, particularly for Children in Care/CYP with a social worker
- Understand how professionals can support these CYP through prompting sense of safety and connection
- Explore supportive approaches and strategies for supporting CYP experiencing transitions and changes in education



DETAILS OF EVENTS: 08.02.2024 - 16:00PM - 17:00PM



THIS IS A 1 HOUR VIRTUAL TRAINING SESSION HOSTED ON THE TEAMS PLATFORM. TRAINING CAN BE DONE AROUND ONE SCREEN IF DESIRED, BUT WE WILL STILL REQUIRE ALL CONTACT NAMES AND EMAIL ADDRESSES OF STAFF ATTENDING.

PLEASE CONTACT COURTNEY.HOPSON@GLOUCESTERSHIRE.GOV.UK TO BOOK ONTO THIS VIRTUAL SCHOOL TRAINING OPPORTUNITY. NON ATTENDANCE OR LESS THAN 48 HOURS' NOTICE OF CANCELLATION WILL INCUR A COST OF £100 PER DELEGATE. CANCELLATION MUST BE SENT TO COURTNEY.HOPSON@GLOUCESTERSHIRE.GOV.UK.