

Unemployment Bulletin

Issue 19 February 2010

Contents

Part 1: Summary

A summary of unemployment data at district, County, regional and national level

1

Part 2: County

Unemployment figures for the County compared to the South West and the rest of the UK

3

Part 3: Districts

A comparative break down of unemployment figures by district

4

Part 4: Wards

Further breakdown of unemployment figures by ward:

Cheltenham	6
Cotswolds	8
Forest of Dean	10
Gloucester	12
Stroud	14
Tewkesbury	16

Part 5: Map

Distribution of claimant rate across Gloucestershire

18

Part 6: Young People

Data about Young People Not in Education, Employment or Training (NEET)

20

INTRODUCTION

The Unemployment Bulletin provides a monthly update on unemployment data for Gloucestershire, the South West region and the United Kingdom. It is produced by the Economic section of the County Council Chief Executive's Support Unit Research Team. The data is sourced from the Office for National Statistics via Nomis (www.nomis.co.uk).

The claimant count measures the number of people claiming unemployment-related benefit (currently Job Seeker's allowance). The claimant rate is the number of claimants as a proportion of the working age population.

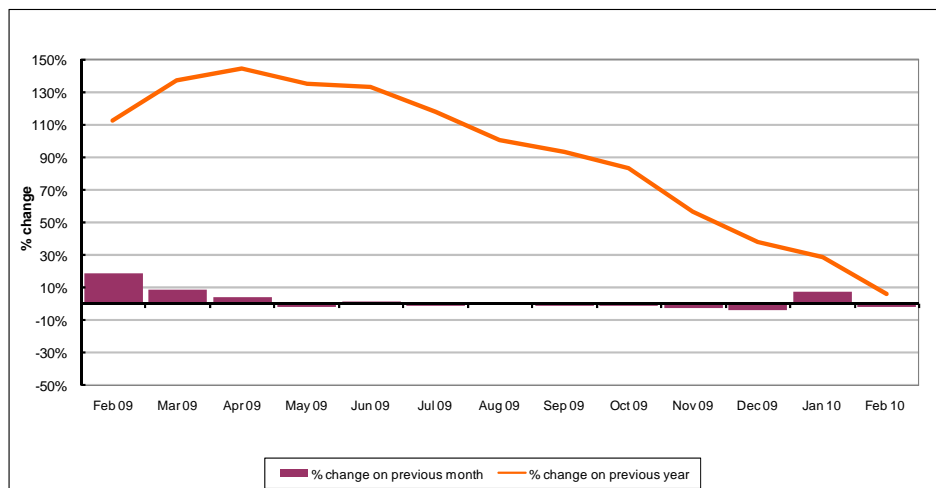
PART 1: SUMMARY

The claimant rate in Gloucestershire was 3.4% in February 2010. This was a decrease of 0.1% on the January 2010 figure. In contrast the UK rate increased to 4.4% and the South West rate remained the same at 3.1%. Gloucestershire's rate remains above the South West average of 3.1%, but 1.0% lower than the UK average of 4.4%.

The claimant count in Gloucestershire in February 2010 decreased by 257 people. The amount of people claiming in February 2010 was 2.1% lower than the number in January 2010 compared to a 0.3% increase in the South West and a 0.2% increase for the UK.

The year on year claimant count in Gloucestershire has decreased. The count was 6% higher in February 2010 than at the same point in the previous year as shown in the graph below.

Gloucestershire claimants - Month on Month and Year on Year change: February 2009 to February 2010



Source: ONS Crown Copyright Reserved

Produced by:

The Research Team (Economics)
Chief Executive Support Unit
Gloucestershire County Council
March 2010

DISTRICTS AT A GLANCE

At a glance unemployment information grouped by district. Includes:

Claim count: Total number of people claiming Job Seekers Allowance in February 2010

Compared to last month: How much larger/smaller February's claim count is compared to January, expressed as a %

Claimant rate: The % of working population claiming Job Seekers Allowance in February 2010

Highest claiming ward: The ward with the highest claim count in that district and the rate

CHELTEMHAM BOROUGH

Claim count:	2,696
Compared to last month:	-4.1%
Claimant rate:	3.9%
Highest claiming ward	Hesters Way (7.5%)

GLOUCESTER CITY

Claim count:	3,244
Compared to last month:	-1.2
Claimant rate:	4.5%
Highest claiming ward	Westgate (8.8%)

COTSWOLD DISTRICT

Claim count:	1,039
Compared to last month:	-3.5%
Claimant rate:	2.2%
Highest claiming ward	Cirencester Watermoor (4.8%)

STROUD DISTRICT

Claim count:	1,940
Compared to last month:	-0.6%
Claimant rate:	3.0%
Highest claiming ward	Central (6.9%)

FOREST OF DEAN

Claim count:	1,681
Compared to last month:	-1.3%
Claimant rate:	3.5%
Highest claiming ward	Cinderford West (6.0%)

TEWKESBURY BOROUGH

Claim count:	1,350
Compared to last month:	-2.3
Claimant rate:	2.9%
Highest claiming ward	Tewkesbury Prior's Park (6.3%)

YOUNG PEOPLE NOT IN EDUCATION, EMPLOYMENT OR TRAINING (NEET)

As at the end of February 2010 there were 610 young people aged 16-18 not in education, employment or training in Gloucestershire and this figure translates into an adjusted (*) 16-18 NEET population of 3.8%.

PART 2: UK, SW AND GLOUCESTERSHIRE INDICATORS

The unemployment situation in Gloucestershire compared to the South West and the UK.

Claimant Rate

Figure 1: Claimant Rate for Gloucestershire, the South West and UK over the past year

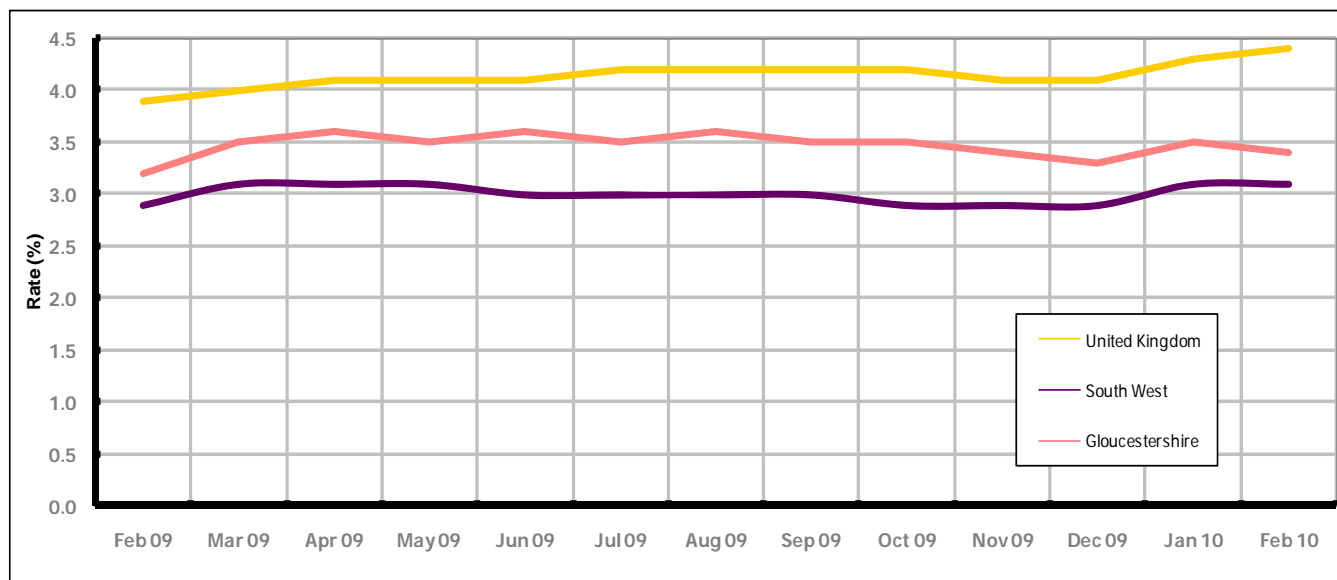


Figure 1 shows the claimant rate for Gloucestershire at 3.4% in February 2010. The rate has remained slightly higher than the South West average over the past year, but persistently lower by approximately 1.0% against the UK average during the same period. The February 2010 rate represented a 2.1% decrease on January 2010.

Claimant Count

Table 1: Analysis of UK, South West and Gloucestershire Claimant Counts

Area	Claimant Count in February 2010	% change on January 2009	Average % increase over the last six months	Consecutive months increasing
UK	1,657,041	0.2%	0.7%	0
South West	98,015	0.3%	0.8%	0
Gloucestershire	11,950	-2.1%	-0.6%	0

Table 1 shows that in February 2010, the number of claimants in Gloucestershire was 2.1% lower than the number in January 2010.

The average growth in claimants in Gloucestershire for the six months to February 2010 was -0.6%. This is 1.1% lower than the UK average and 1.2% lower than the South West average.

PART 3: LOCAL AUTHORITY DISTRICT ANALYSIS

Claimant Rate and Claimant Count

Figure 2: Claimant Rate (%) across Gloucestershire - February 2010

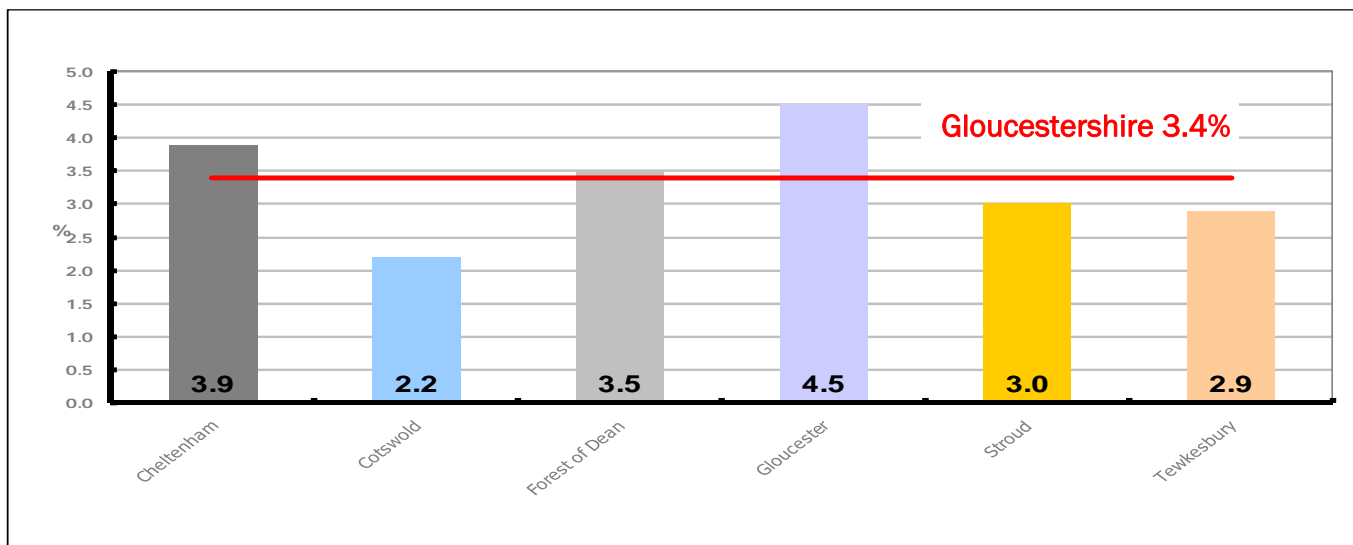


Figure 2 shows the claimant rate for February 2010 in Gloucestershire. Between January 2010 and February 2010 all districts decreased.

Figure 3: Total claimants over the past year across Gloucestershire Districts

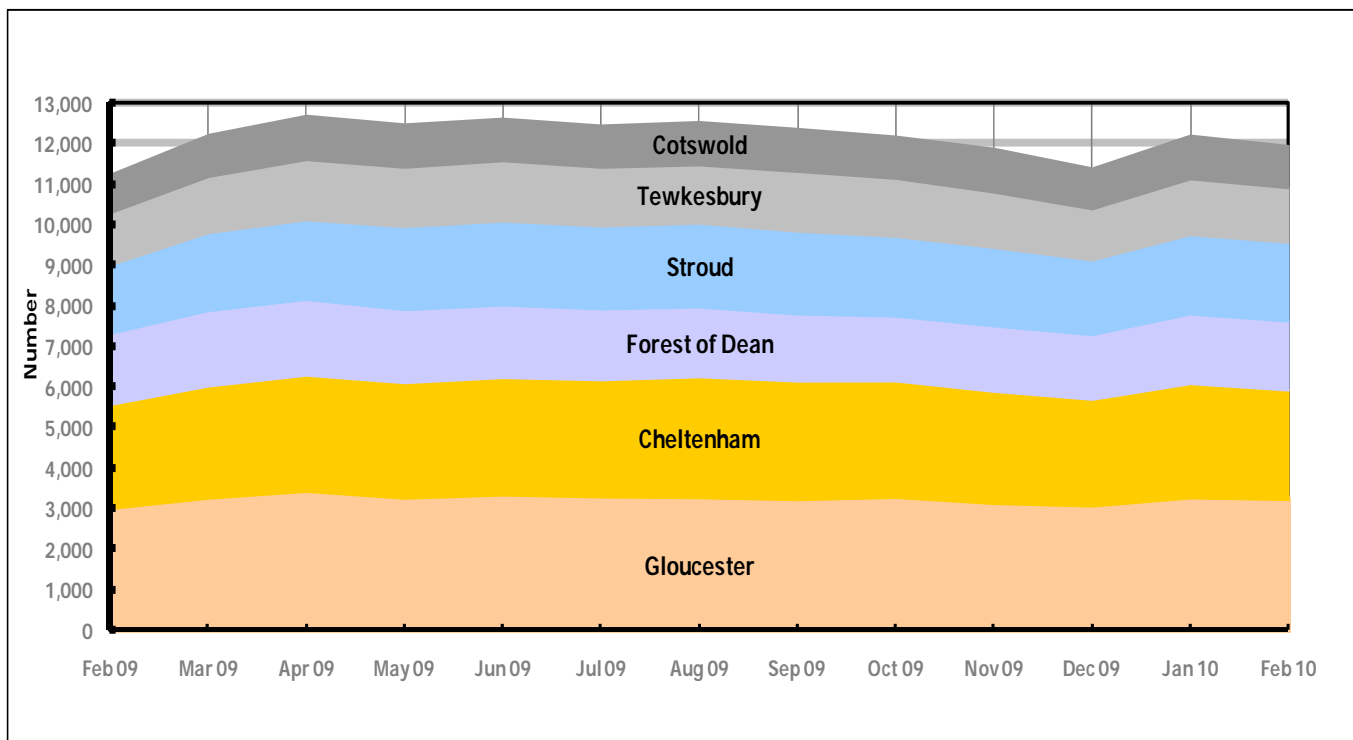


Figure 3 shows the overall claimant count by district for Gloucestershire over the past year. It shows the number of claimants have been declining since September 2009, with the exception of January 2010 when they increased.

Table 2: Analysis of Gloucestershire and District Claimant Counts

Total	Feb 10 Number	Feb 10 Rate	Jan 10 Number	Jan 10 Rate	Monthly change	% monthly change	Monthly change of rate
Gloucestershire	11,950	3.4	12,207	3.5	-257	-2.1%	-0.1
Cheltenham	2,696	3.9	2,811	4.0	-115	-4.1%	-0.1
Cotswold	1,039	2.2	1,077	2.2	-38	-3.5%	0.0
Forest of Dean	1,681	3.5	1,704	3.5	-23	-1.3%	0.0
Gloucester	3,244	4.5	3,282	4.6	-38	-1.2%	-0.1
Stroud	1,940	3.0	1,951	3.0	-11	-0.6%	0.0
Tewkesbury	1,350	2.9	1,382	3.0	-32	-2.3%	-0.1

Table 2 shows the change in the claimant count in February 2010 compared to January 2010. All districts experienced a decrease in the number of claimants.

Table 3: Analysis of Male Gloucestershire and District Claimant Counts

Male	Feb 10 Number	Feb 10 Rate	Jan 10 Number	Jan 10 Rate	Monthly change	% monthly change	Monthly change of rate
Gloucestershire	8,754	4.8	9,018	4.9	-264	-2.9%	-0.1
Cheltenham	2,029	5.5	2,136	5.8	-107	-5.0%	-0.3
Cotswold	749	3.0	777	3.1	-28	-3.6%	-0.1
Forest of Dean	1,220	4.8	1,237	4.8	-17	-1.4%	0.0
Gloucester	2,403	6.5	2,474	6.7	-71	-2.9%	-0.2
Stroud	1,419	4.1	1,421	4.1	-2	-0.1%	0.0
Tewkesbury	934	3.8	973	4.0	-39	-4.0%	-0.2

Table 3 shows the change in the male claimant count in February 2010 compared to January 2010. All districts experienced a decrease in the number of male claimants.

Table 4: Analysis of Female Gloucestershire and District Claimant Counts

Female	Feb 10 Number	Feb 10 Rate	Jan 10 Number	Jan 10 Rate	Monthly change	% monthly change	Monthly change of rate
Gloucestershire	3,196	1.9	3,189	1.9	7	0.2%	0.0
Cheltenham	667	2.0	675	2.1	-8	-1.2%	-0.1
Cotswold	290	1.3	300	1.3	-10	-3.3%	0.0
Forest of Dean	461	2.0	467	2.1	-6	-1.3%	-0.1
Gloucester	841	2.5	808	2.4	33	4.1%	0.1
Stroud	521	1.7	530	1.7	-9	-1.7%	0.0
Tewkesbury	416	1.9	409	1.8	7	1.7%	0.1

Table 4 shows the change in the female claimant count in February 2010 compared to January 2010. Stroud and Tewkesbury districts experienced an increase in the number of claimants, while the other districts underwent a decline.

PART 4: LOCAL AUTHORITY DISTRICT AND WARD ANALYSIS

This section covers the six districts and a comparison of their constituent wards.

4.1 Cheltenham Borough

Claimant Rate and Claimant Count

Figure 4: Cheltenham Borough claimant rate over the last year

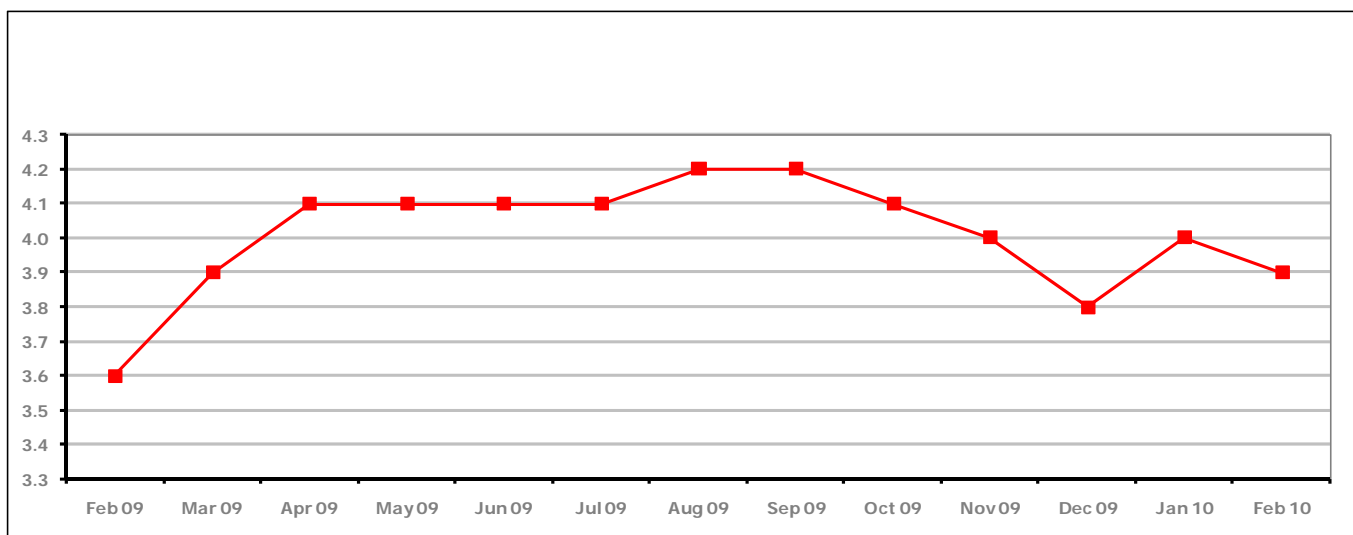


Figure 4 shows the claimant rate in Cheltenham decreased in February 2010 to 3.9%.

Figure 5: Cheltenham Borough claimants - Month on Month and Year on Year change

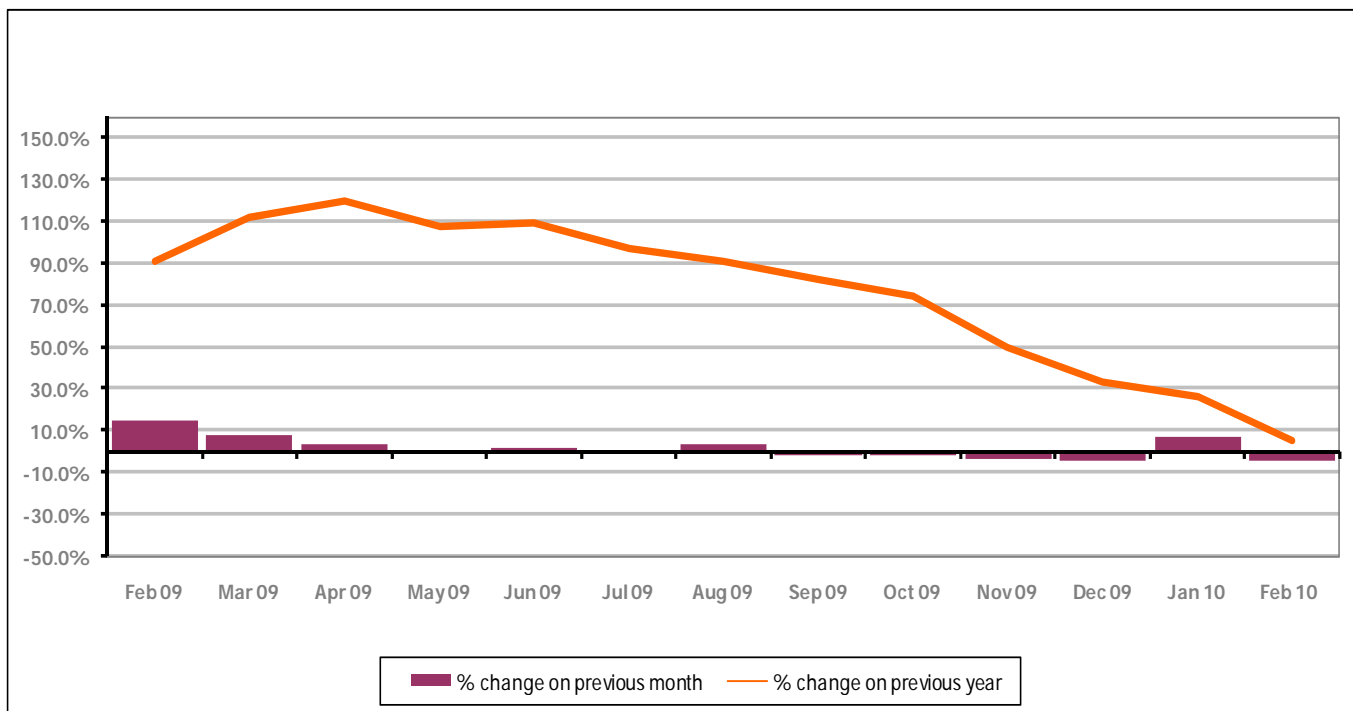


Figure 5 shows the claimant count decreased by 4.1% since last month. In addition the change on the previous year has gone down in February 2010 compared to January 2010 to 5.4%.

PART 4: LOCAL AUTHORITY DISTRICT AND WARD ANALYSIS

4.1 Cheltenham Borough continued...

Figure 6: Claimant rates across Cheltenham Borough wards - February 2010

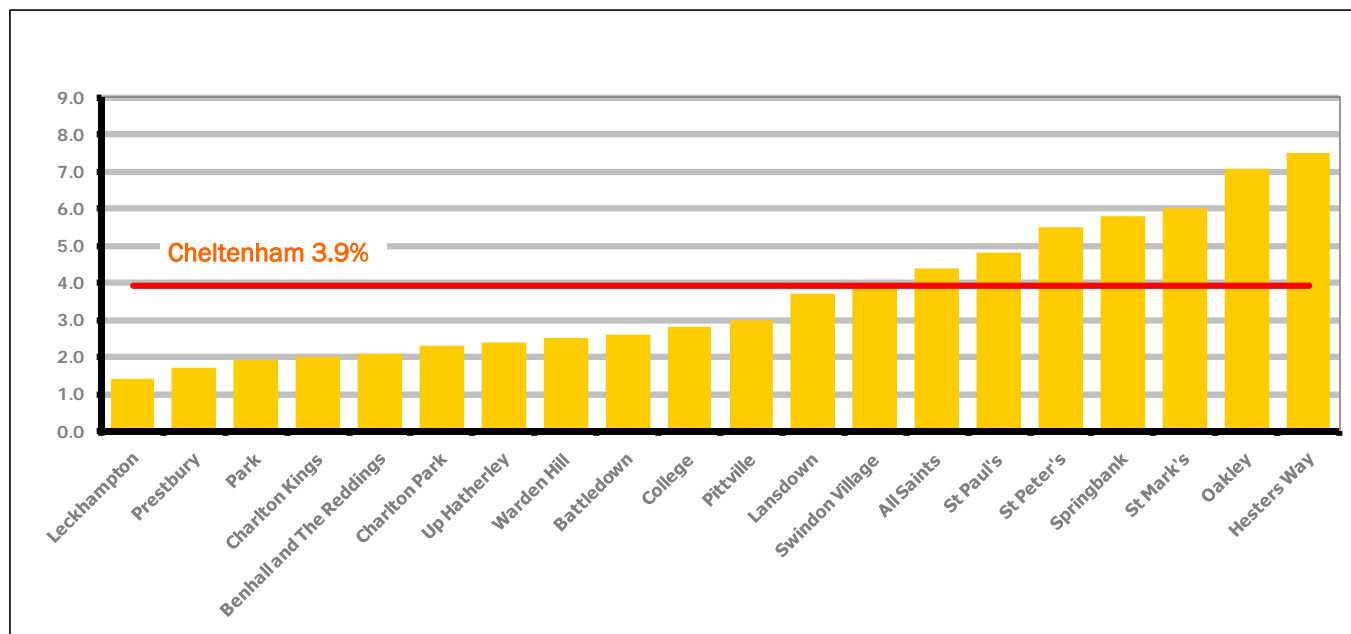
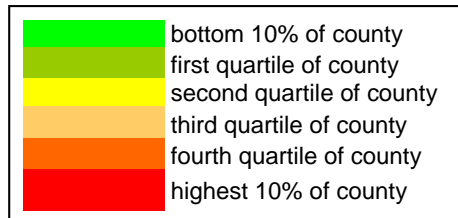


Figure 6 shows the claimant rates for Cheltenham Borough wards. The red line represents the average claimant rate across the Borough of 3.9%. Eight wards lie above the average.

Table 5: Analysis of Claimant Count at Cheltenham Borough ward level - February 2010

District	Ward	Rate	Rank*
Cheltenham	Leckhampton	1.4	11
Cheltenham	Prestbury	1.7	22
Cheltenham	Park	1.9	32
Cheltenham	Charlton Kings	2.0	40
Cheltenham	Benhall and The Reddings	2.1	45
Cheltenham	Charlton Park	2.3	59
Cheltenham	Up Hatherley	2.4	64
Cheltenham	Warden Hill	2.5	70
Cheltenham	Battledown	2.6	73
Cheltenham	College	2.8	80
Cheltenham	Pittville	3.0	87
Cheltenham	Lansdown	3.7	106
Cheltenham	Swindon Village	4.0	110
Cheltenham	All Saints	4.4	116
Cheltenham	St Paul's	4.8	123
Cheltenham	St Peter's	5.5	129
Cheltenham	Springbank	5.8	130
Cheltenham	St Mark's	6.0	132
Cheltenham	Oakley	7.1	139
Cheltenham	Hesters Way	7.5	140



* 1 = "best" and 142 = "worst"

Table 5 shows overall claimant rates for Cheltenham Borough wards and their position relative to all wards in Gloucestershire.

PART 4: LOCAL AUTHORITY DISTRICT AND WARD ANALYSIS

4.2 Cotswold District

Claimant Rate and Claimant Count

Figure 7: Cotswold District claimant rate over the last year

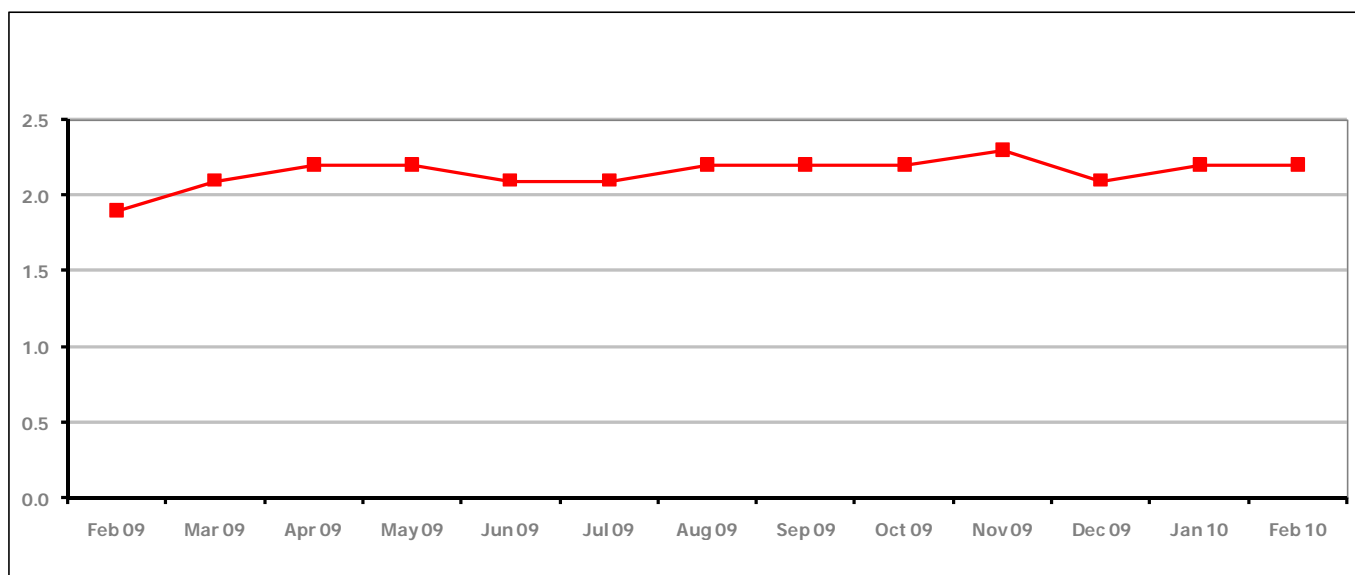


Figure 7 shows the claimant rate in Cotswold District remained the same as last month at 2.2%.

Figure 8: Cotswold District claimants - Month on Month and Year on Year change

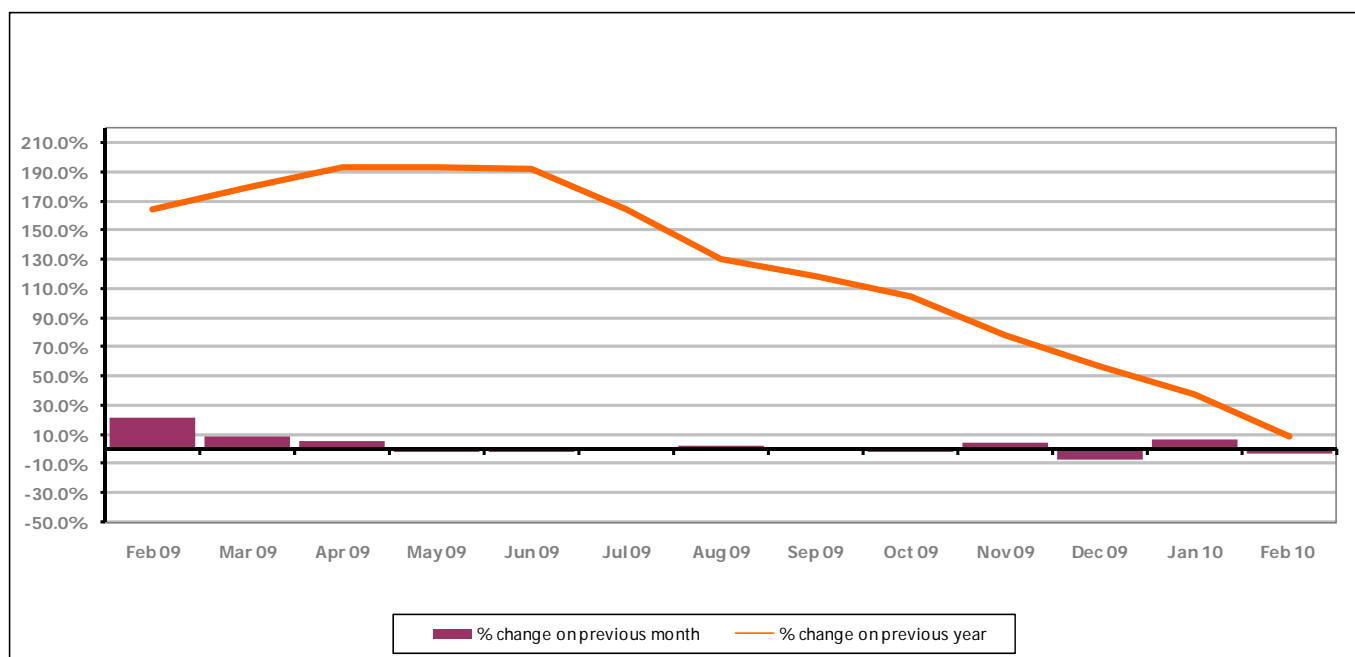


Figure 8 shows the claimant count decreased by 3.5% since January 2010. The change on the previous year has decreased from January 2010 to February 2010 to 9%.

PART 4: LOCAL AUTHORITY DISTRICT AND WARD ANALYSIS

4.2 Cotswold District continued...

Figure 9: Claimant rates across Cotswold District wards - February 2010

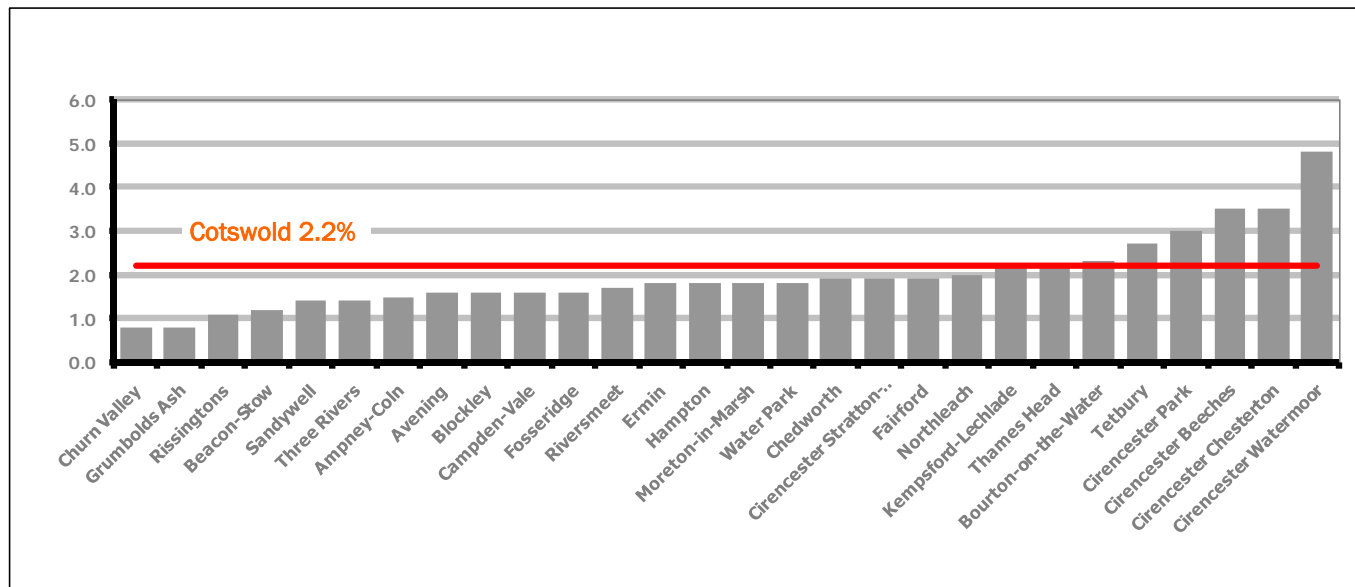
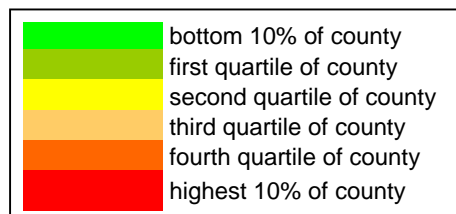


Figure 9 shows the claimant rates for Cotswold District wards. The red line represents the average claimant rate across the District of 2.2%. Six wards lie above the average.

Table 6: Analysis of Claimant Count at Cotswold District ward level - February 2010

District	Ward	Rate	Rank*
Cotswolds	Churn Valley	0.8	3
Cotswolds	Grumbolds Ash	0.8	3
Cotswolds	Rissingtons	1.1	7
Cotswolds	Beacon-Stow	1.2	8
Cotswolds	Sandywell	1.4	11
Cotswolds	Three Rivers	1.4	11
Cotswolds	Ampley-Coln	1.5	15
Cotswolds	Avening	1.6	17
Cotswolds	Blockley	1.6	17
Cotswolds	Campden-Vale	1.6	17
Cotswolds	Fosseridge	1.6	17
Cotswolds	Riversmeet	1.7	22
Cotswolds	Ermin	1.8	25
Cotswolds	Hampton	1.8	25
Cotswolds	Moreton-in-Marsh	1.8	25
Cotswolds	Water Park	1.8	25
Cotswolds	Chedworth	1.9	32
Cotswolds	Cirencester Stratton-Whiteway	1.9	32
Cotswolds	Fairford	1.9	32
Cotswolds	Northleach	2.0	40
Cotswolds	Kempsford-Lechlade	2.2	53
Cotswolds	Thames Head	2.2	53
Cotswolds	Bourton-on-the-Water	2.3	59
Cotswolds	Tetbury	2.7	77
Cotswolds	Cirencester Park	3.0	87
Cotswolds	Cirencester Beeches	3.5	100
Cotswolds	Cirencester Chesterton	3.5	100
Cotswolds	Cirencester Watermoor	4.8	123



* 1 = "best" and 142 = "worst"

Table 6 shows overall claimant rates for Cotswold District wards and their position relative to all wards in Gloucestershire.

PART 4: LOCAL AUTHORITY DISTRICT AND WARD ANALYSIS

4.3 Forest of Dean District

Claimant Rate and Claimant Count

Figure 10: Forest of Dean District claimant rate over the last year

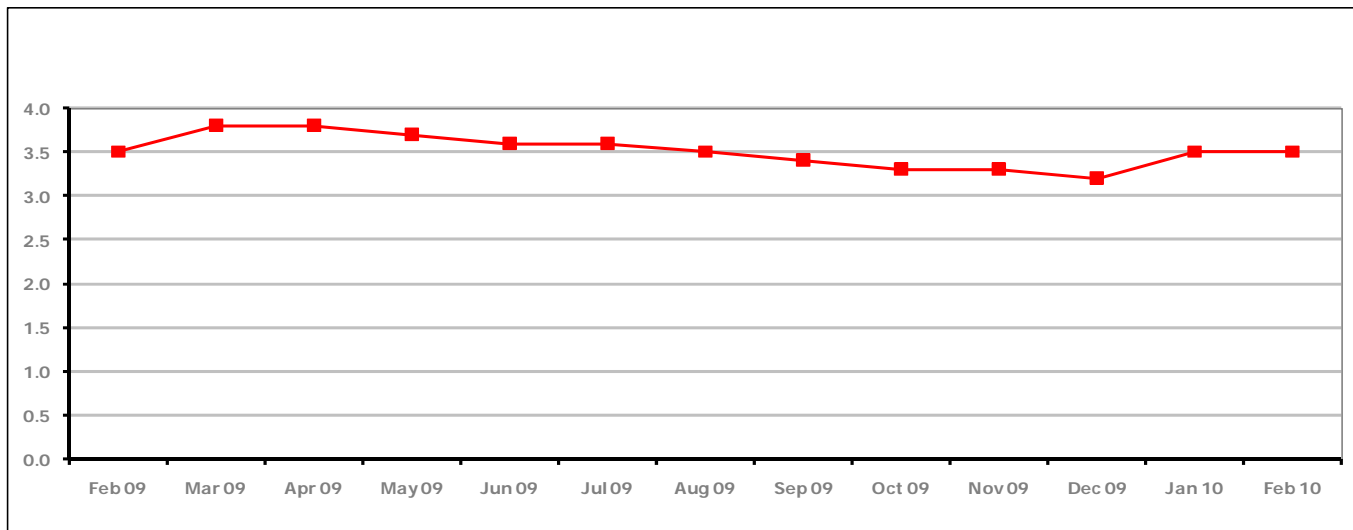


Figure 10 shows the claimant rate in the Forest of Dean remained the same as last month at 3.5%.

Figure 11: Forest of Dean District claimants - Month on Month and Year on Year change

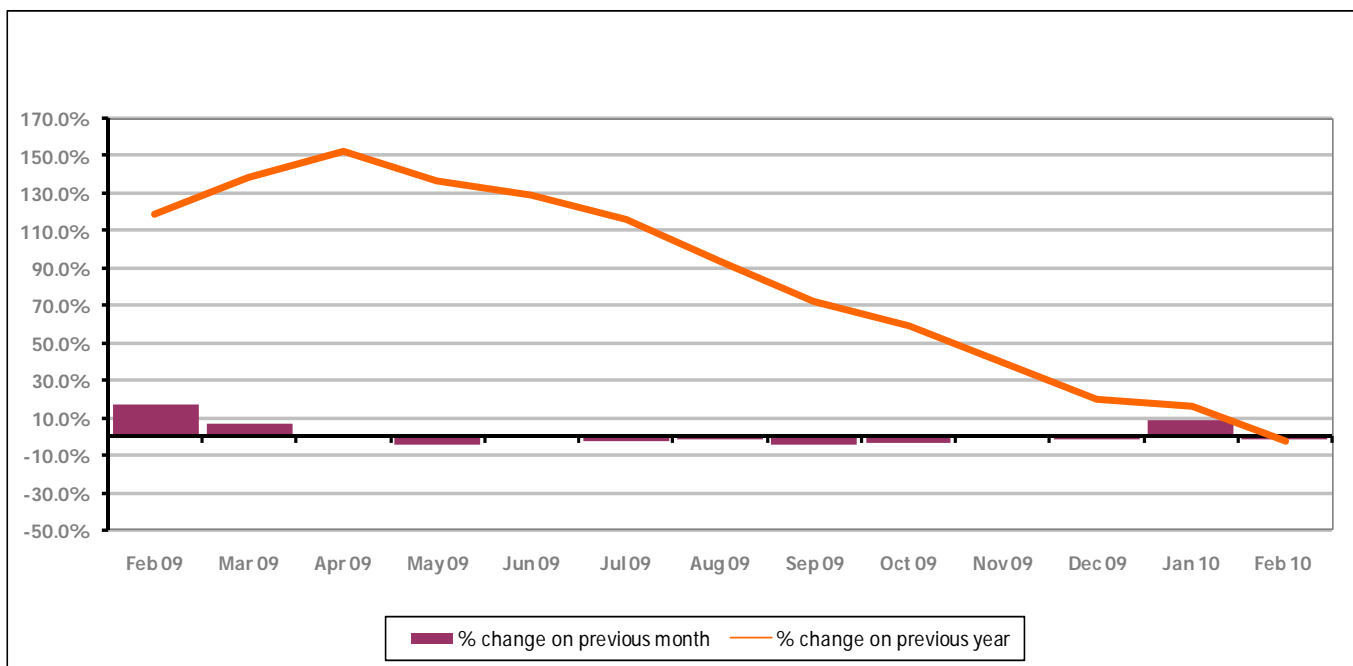


Figure 11 shows the claimant count decreased by 1.3% since January 2009. The change on the previous year decreased between February 2010 and January 2010 to -3%.

PART 4: LOCAL AUTHORITY DISTRICT AND WARD ANALYSIS

4.3 Forest of Dean District continued...

Figure 12: Claimant rates across Forest of Dean District wards - February 2010

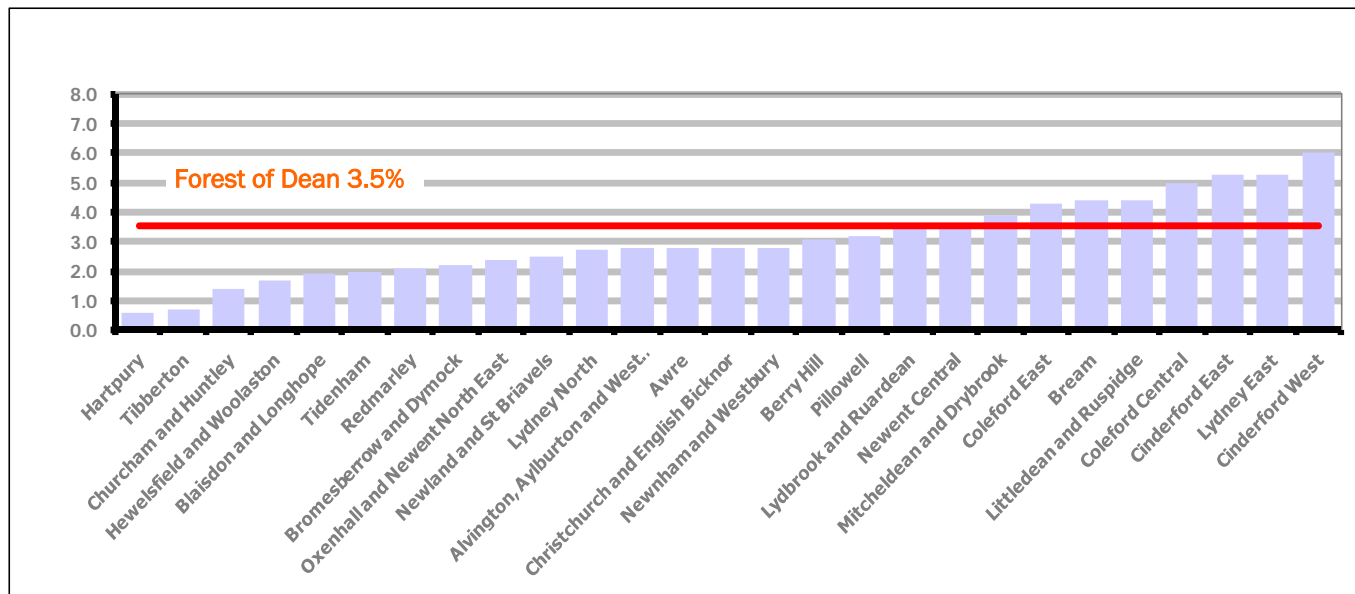
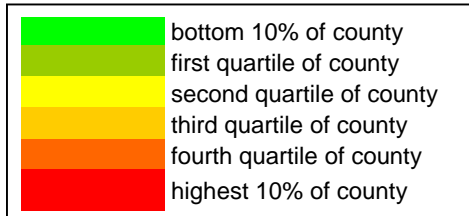


Figure 12 shows the claimant rates for Forest of Dean District wards. The red line represents the average claimant rate across the District of 3.5%. Eight wards lie above the average.

Table 7: Analysis of Claimant Count at Forest of Dean District ward level - February 2010

District	Ward	Rate	Rank*
Forest	Hartpury	0.6	1
Forest	Tibberton	0.7	2
Forest	Churcham and Huntley	1.4	11
Forest	Hewelsfield and Woolaston	1.7	22
Forest	Blaisdon and Longhope	1.9	32
Forest	Tidenham	2.0	40
Forest	Redmarley	2.1	45
Forest	Bromesberrow and Dymock	2.2	53
Forest	Oxenhall and Newent North East	2.4	64
Forest	Newland and St Briavels	2.5	70
Forest	Lydney North	2.7	77
Forest	Alvington, Aylburton and West Lydney	2.8	80
Forest	Awre	2.8	80
Forest	Christchurch and English Bicknor	2.8	80
Forest	Newnham and Westbury	2.8	80
Forest	Berry Hill	3.1	91
Forest	Pillowell	3.2	96
Forest	Lydbrook and Ruardean	3.5	100
Forest	Newent Central	3.5	100
Forest	Mitcheldean and Drybrook	3.9	108
Forest	Coleford East	4.3	114
Forest	Bream	4.4	116
Forest	Littledean and Ruspidge	4.4	116
Forest	Coleford Central	5.0	125
Forest	Cinderford East	5.3	126
Forest	Lydney East	5.3	126
Forest	Cinderford West	6.0	132



* 1 = "best" and 142 = "worst"

Table 7 shows overall claimant rates for the Forest of Dean District wards and their position relative to all wards in Gloucestershire.

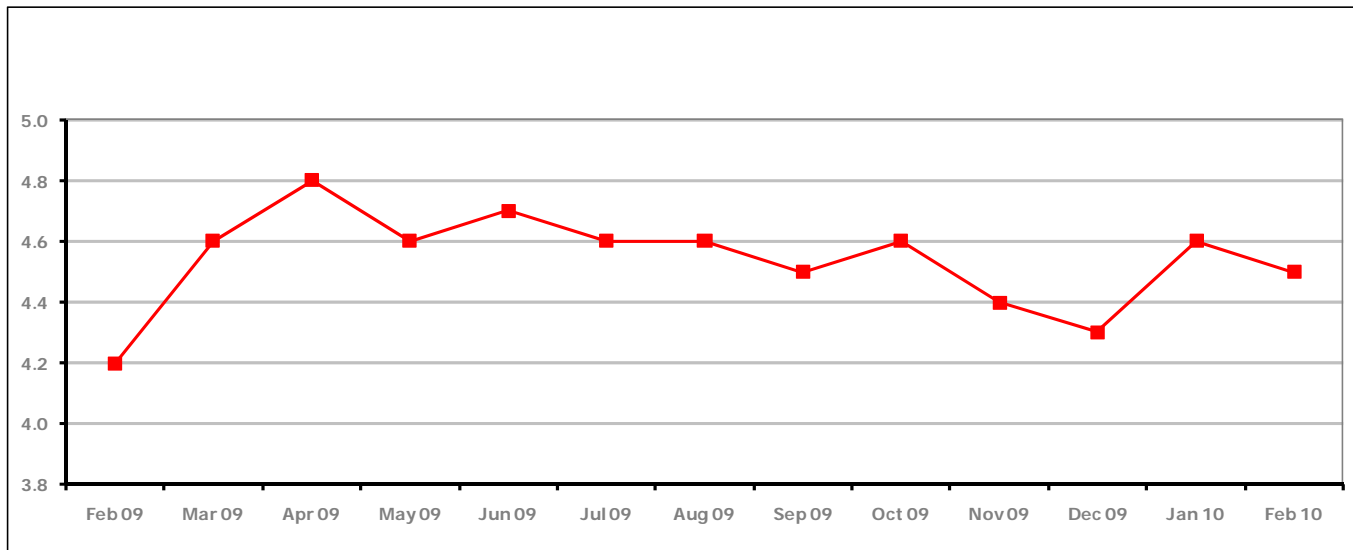
PART 4: LOCAL AUTHORITY DISTRICT AND WARD ANALYSIS**4.4 Gloucester City****Claimant Rate and Claimant Count***Figure 13: Gloucester City claimant rate over the last year*

Figure 13 shows the claimant rate for Gloucester City decreased in February 2010 to 4.5%.

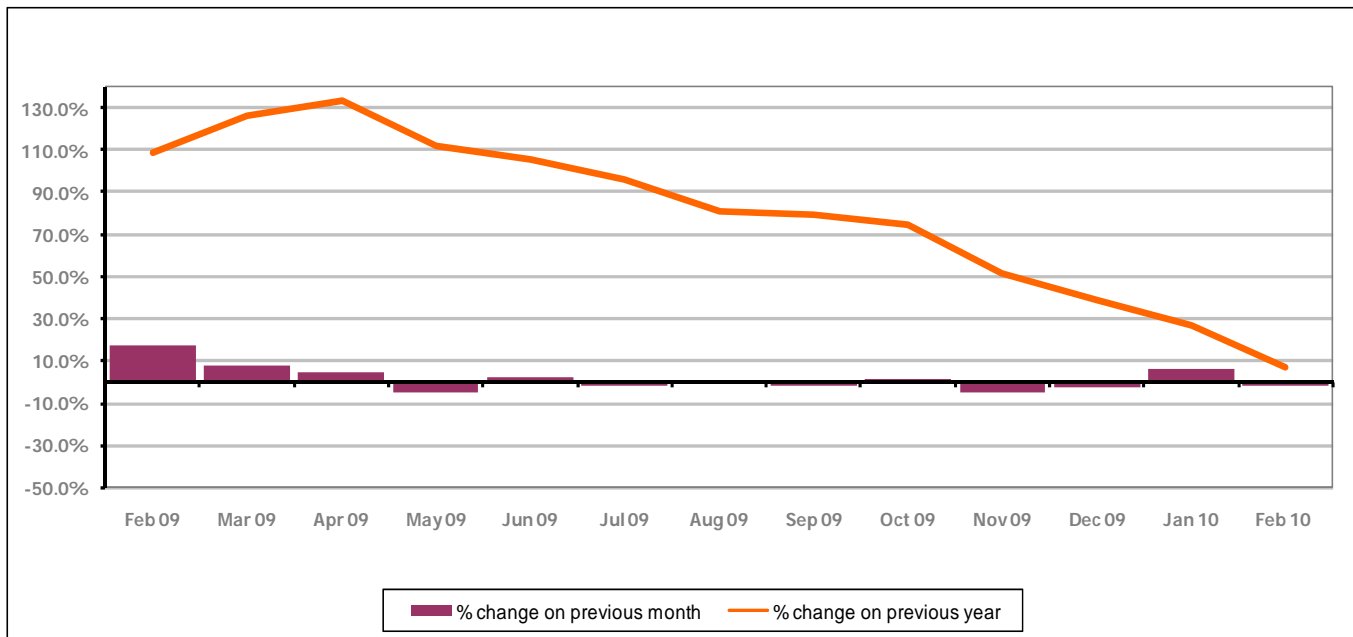
Figure 14: Gloucester City claimants - Month on Month and Year on Year change

Figure 14 shows the monthly claimant count decreased by 1.2% since January 2010. The change on the previous year has decreased between January 2010 and February 2010 to 7%.

PART 4: LOCAL AUTHORITY DISTRICT AND WARD ANALYSIS

4.4 Gloucester City continued...

Figure 15: Claimant rates across Gloucester City wards - February 2010

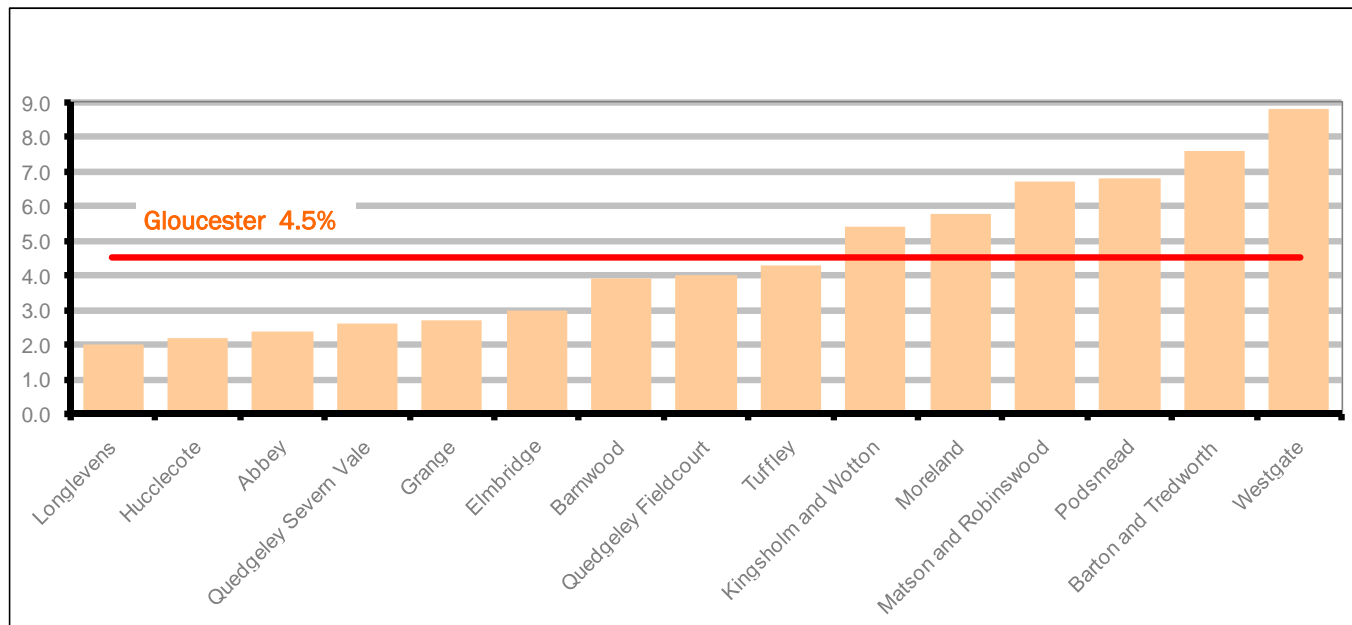
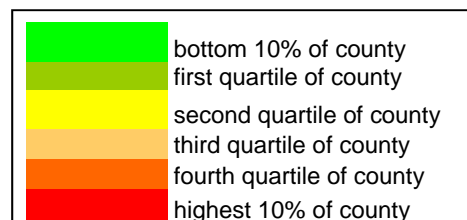


Figure 15 shows the claimant rates for Gloucester City district wards. The red line represents the average claimant rate across the City of 4.5%. Six wards lie above the average.

Table 8: Analysis of Claimant Count at Gloucester City ward level - February 2010

District	Ward	Rate	Rank*
Gloucester	Longlevens	2.0	40
Gloucester	Hucclecote	2.2	53
Gloucester	Abbey	2.4	64
Gloucester	Quedgeley Severn Vale	2.6	73
Gloucester	Grange	2.7	77
Gloucester	Elmbridge	3.0	87
Gloucester	Barnwood	3.9	108
Gloucester	Quedgeley Fieldcourt	4.0	110
Gloucester	Tuffley	4.3	114
Gloucester	Kingsholm and Wotton	5.4	128
Gloucester	Moreland	5.8	130
Gloucester	Matson and Robinswood	6.7	136
Gloucester	Podsmead	6.8	137
Gloucester	Barton and Tredworth	7.6	141
Gloucester	Westgate	8.8	142



* 1 = "best" and 142 = "worst"

Table 8 shows overall claimant rates for Gloucester City wards and their position relative to all wards in Gloucestershire.

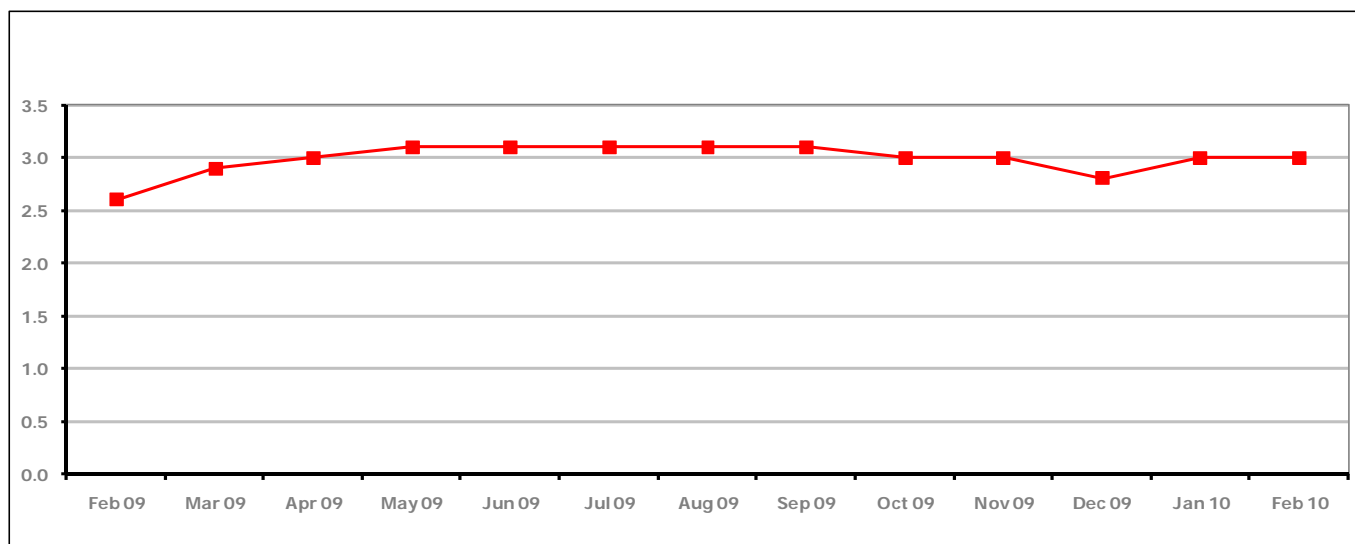
PART 4: LOCAL AUTHORITY DISTRICT AND WARD ANALYSIS**4.5 Stroud District****Claimant Rate and Claimant Count***Figure 16: Stroud District claimant rate over the last year*

Figure 16 shows the claimant rate for Stroud District remained the same as last month at 3.0%.

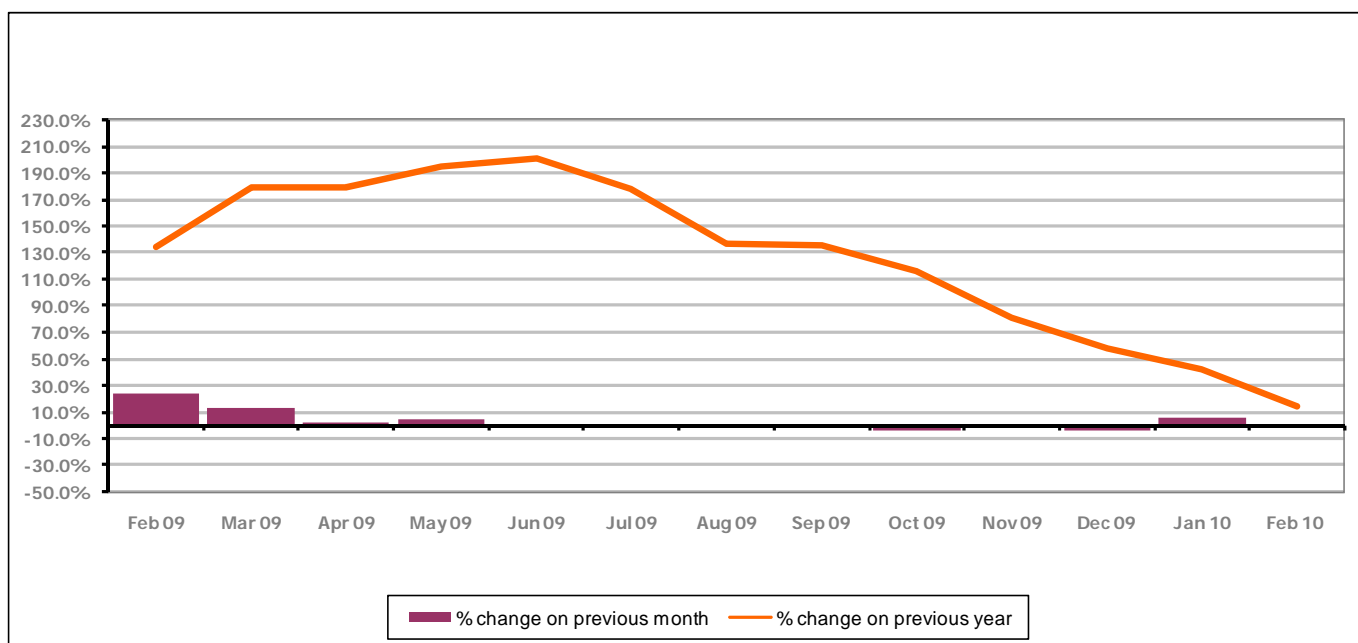
Figure 17: Stroud District claimants - Month on Month and Year on Year change

Figure 17 shows the monthly claimant count decreased by 0.6% since January 2010. The change on the previous year has decreased between January 2010 and February 2010 to 14%.

PART 4: LOCAL AUTHORITY AND DISTRICT ANALYSIS

4.5 Stroud District continued...

Figure 18: Claimant rates across Stroud District wards - February 2010

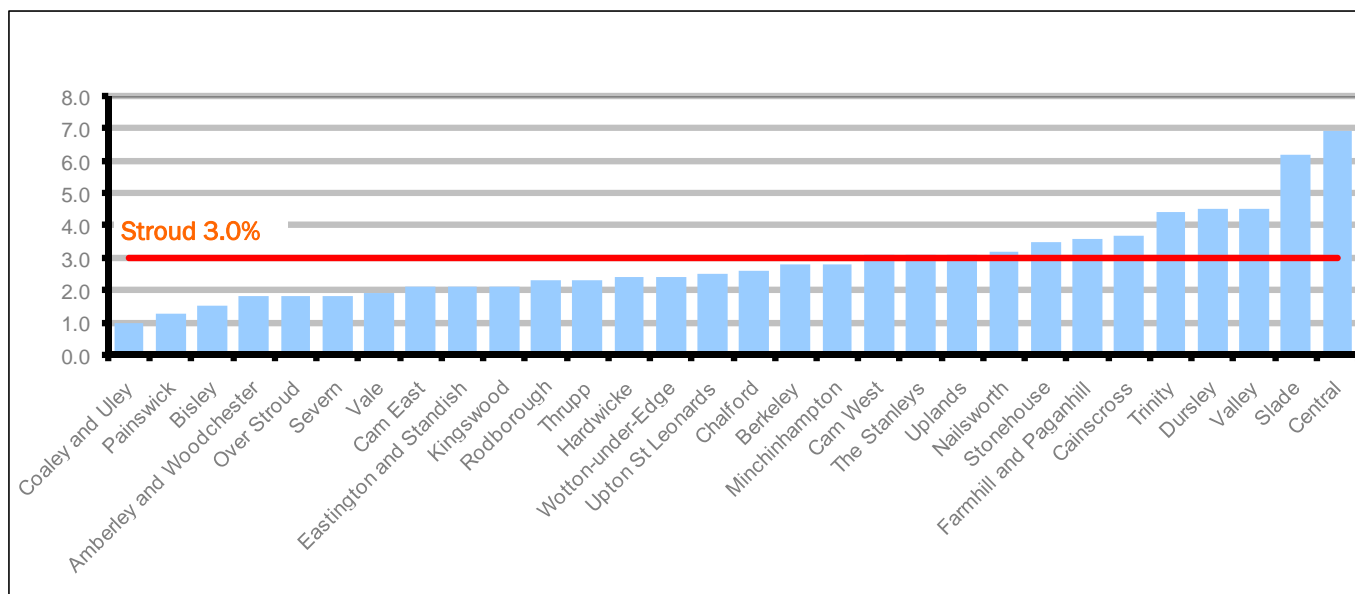
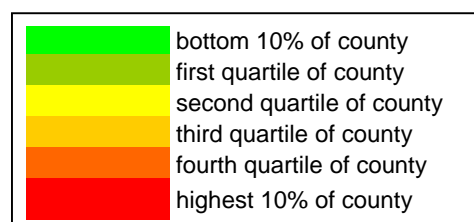


Figure 18 shows the claimant rates in Stroud District wards. The red line represents the average claimant rate across the District of 3.0%. Twelve wards are above the average.

Table 9: Analysis of Claimant Count at Stroud District ward level - February 2010

District	Ward	Rate	Rank*
Stroud	Coaley and Uley	1.0	6
Stroud	Painswick	1.3	9
Stroud	Bisley	1.5	15
Stroud	Amberley and Woodchester	1.8	25
Stroud	Over Stroud	1.8	25
Stroud	Severn	1.8	25
Stroud	Vale	1.9	32
Stroud	Cam East	2.1	45
Stroud	Eastington and Standish	2.1	45
Stroud	Kingswood	2.1	45
Stroud	Rodborough	2.3	59
Stroud	Thrupp	2.3	59
Stroud	Hardwicke	2.4	64
Stroud	Wotton-under-Edge	2.4	64
Stroud	Upton St Leonards	2.5	70
Stroud	Chalford	2.6	73
Stroud	Berkeley	2.8	80
Stroud	Minchinhampton	2.8	80
Stroud	Cam West	3.1	91
Stroud	The Stanleys	3.1	91
Stroud	Uplands	3.1	91
Stroud	Nailsworth	3.2	96
Stroud	Stonehouse	3.5	100
Stroud	Farmhill and Paganhill	3.6	105
Stroud	Cainscross	3.7	106
Stroud	Trinity	4.4	116
Stroud	Dursley	4.5	120
Stroud	Valley	4.5	120
Stroud	Slade	6.2	134
Stroud	Central	6.9	138



* 1 = "best" and 142 = "worst"

Table 9 shows overall claimant rates for Stroud District wards and their position relative to all wards in Gloucestershire.

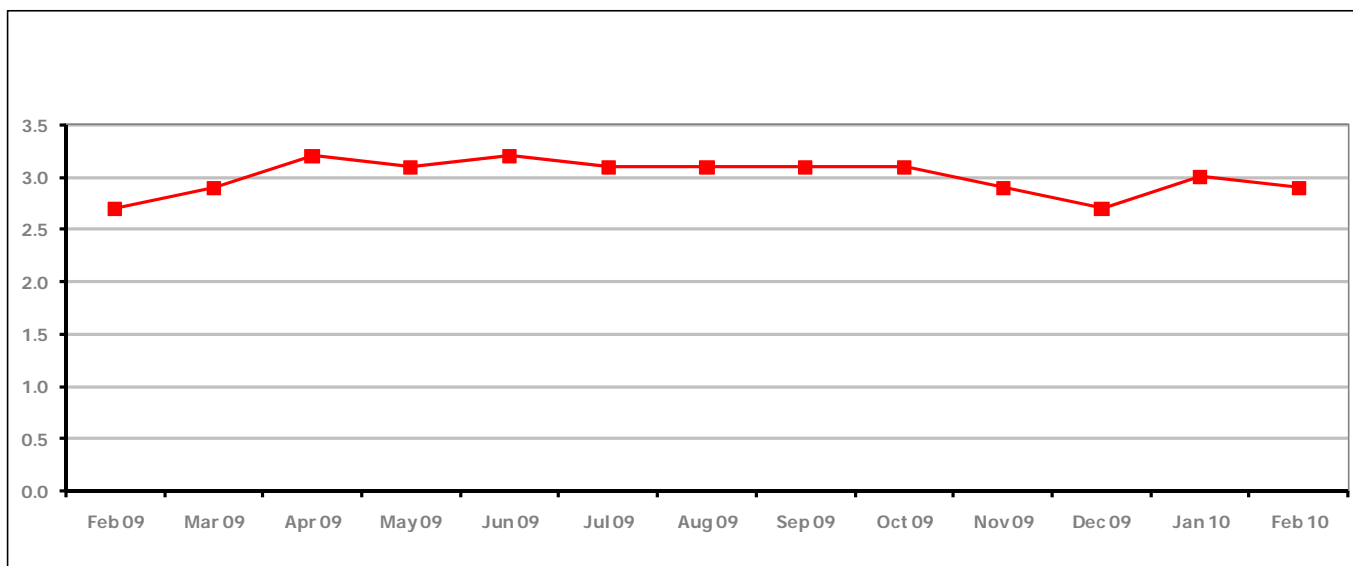
PART 4: LOCAL AUTHORITY DISTRICT AND WARD ANALYSIS**4.6 Tewkesbury District****Claimant Rate and Claimant Count***Figure 19: Tewkesbury District claimant rate over the last year*

Figure 19 shows the claimant rate for Tewkesbury District decreased in February 2010 to 2.9%.

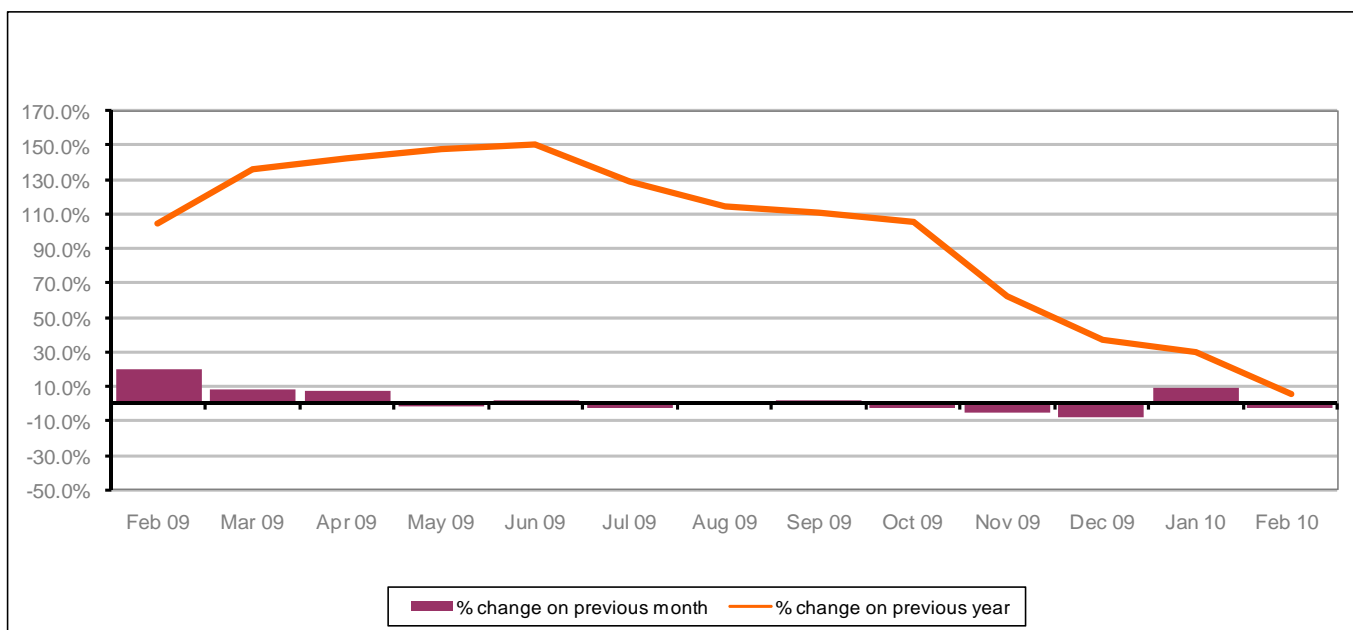
Figure 20: Tewkesbury District claimants - Month on Month and Year on Year change

Figure 20 shows that the monthly claimant count decreased in February 2010 by 2.3%. The change on the previous year decreased between January 2010 and February 2010 to 5%.

PART 4: LOCAL AUTHORITY AND DISTRICT ANALYSIS

4.6 Tewkesbury District continued...

Figure 21: Claimant rates across Tewkesbury District wards - February 2010

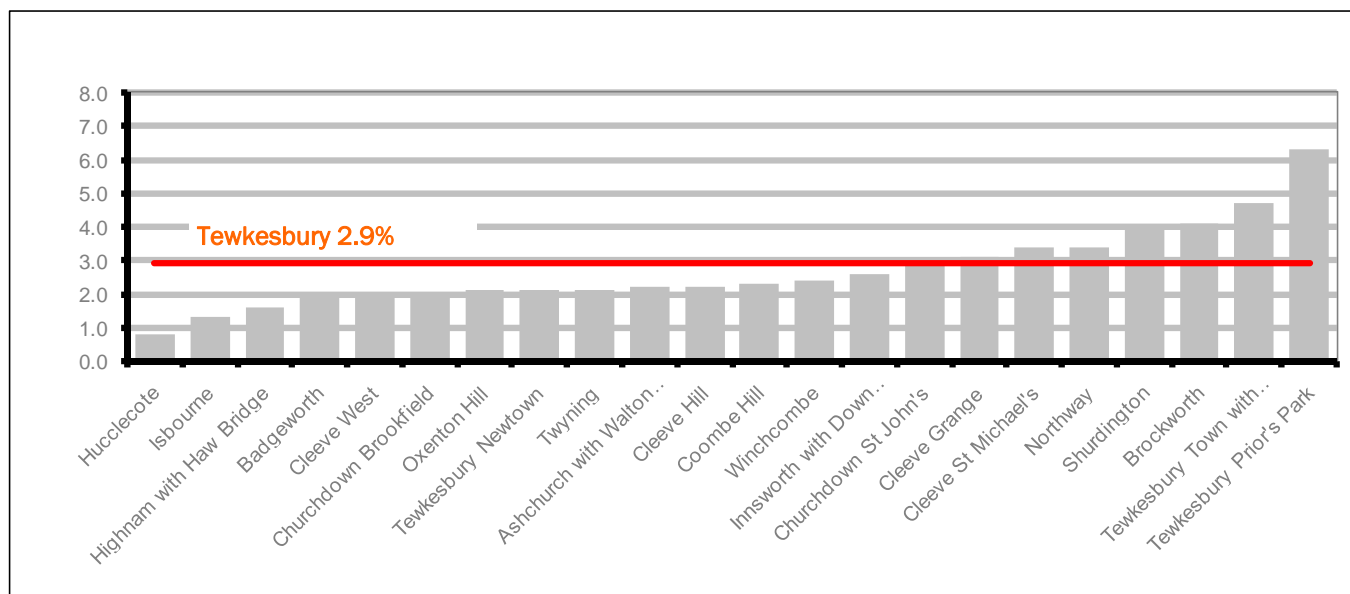
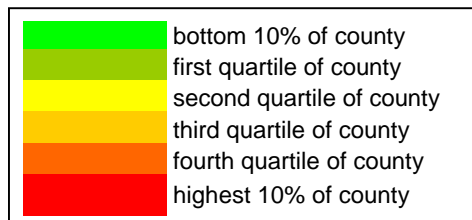


Figure 21 shows the claimant rates in Tewkesbury District wards. The red line represents the average claimant rate across the District of 2.9% and eight wards are above the average.

Table 10: Analysis of Claimant Count at Tewkesbury District level - February 2010

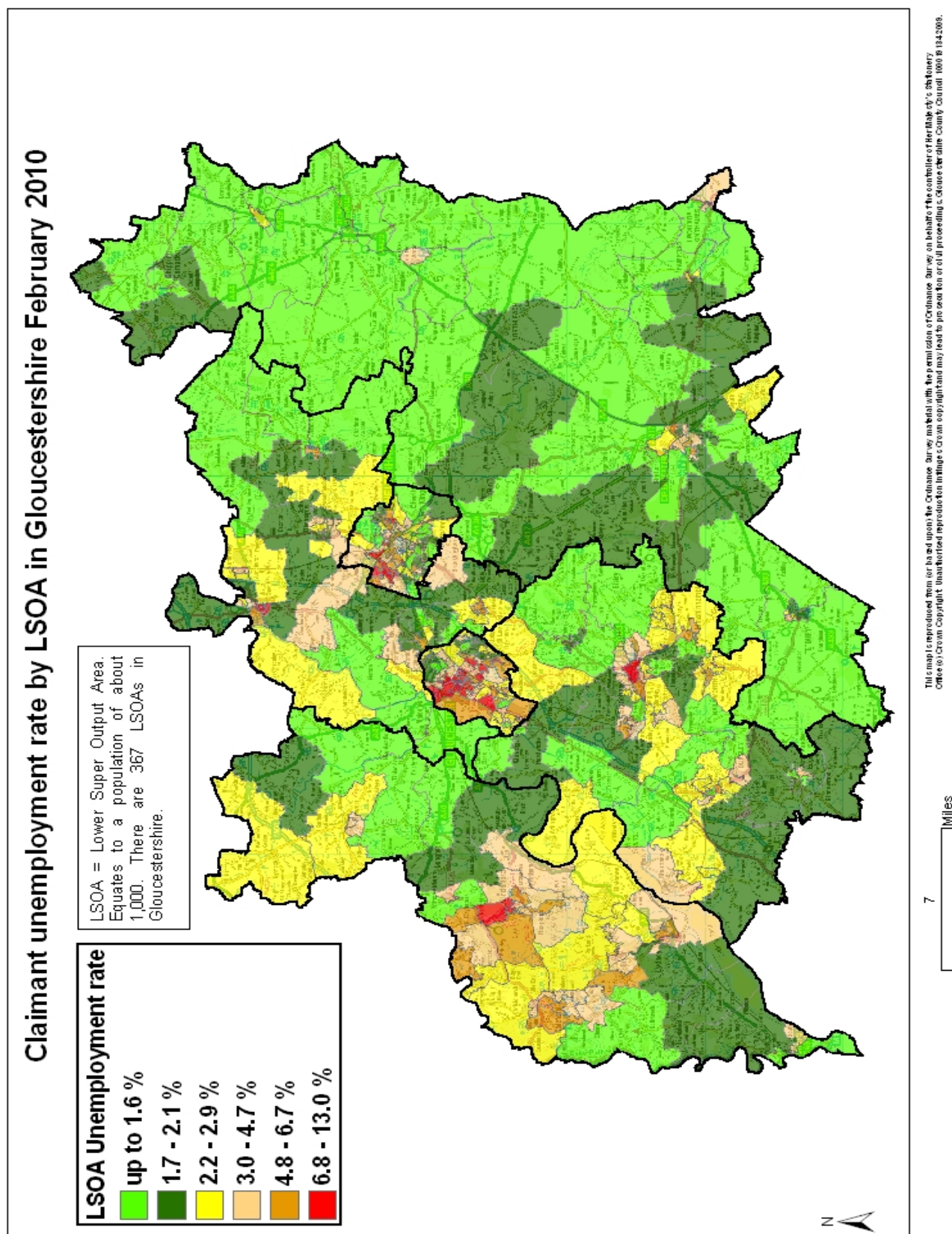
District	Ward	Rate	Rank*
Tewkesbury	Hucclecote	0.8	3
Tewkesbury	Isbourne	1.3	9
Tewkesbury	Highnam with Haw Bridge	1.6	17
Tewkesbury	Badgeworth	1.9	32
Tewkesbury	Cleeve West	1.9	32
Tewkesbury	Churchdown Brookfield	2.0	40
Tewkesbury	Oxenton Hill	2.1	45
Tewkesbury	Tewkesbury Newtown	2.1	45
Tewkesbury	Twynning	2.1	45
Tewkesbury	Ashchurch with Walton Cardiff	2.2	53
Tewkesbury	Cleeve Hill	2.2	53
Tewkesbury	Coombe Hill	2.3	59
Tewkesbury	Winchcombe	2.4	64
Tewkesbury	Innsworth with Down Hatherley	2.6	73
Tewkesbury	Churchdown St John's	3.0	87
Tewkesbury	Cleeve Grange	3.1	91
Tewkesbury	Cleeve St Michael's	3.4	98
Tewkesbury	Northway	3.4	98
Tewkesbury	Shurdington	4.0	110
Tewkesbury	Brockworth	4.1	113
Tewkesbury	Tewkesbury Town with Mitton	4.7	122
Tewkesbury	Tewkesbury Prior's Park	6.3	135



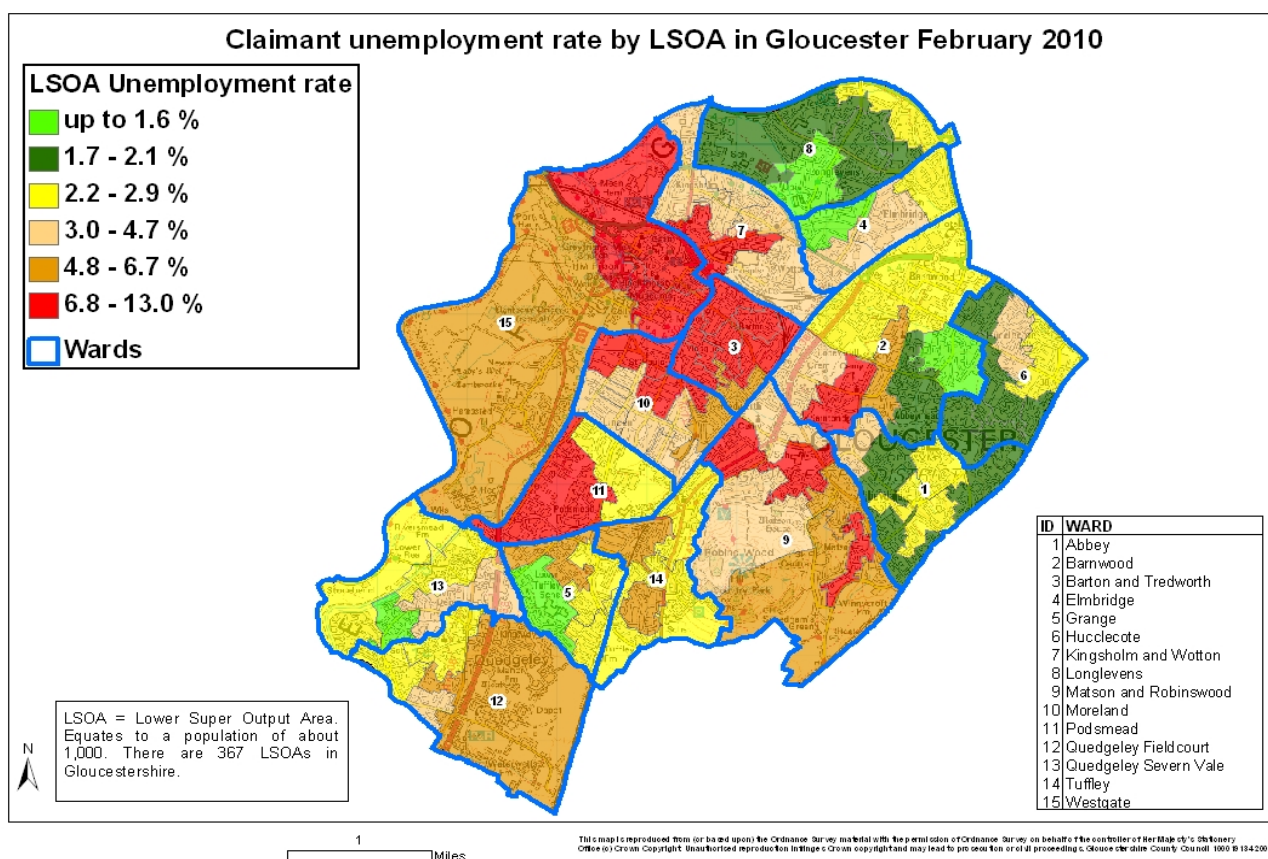
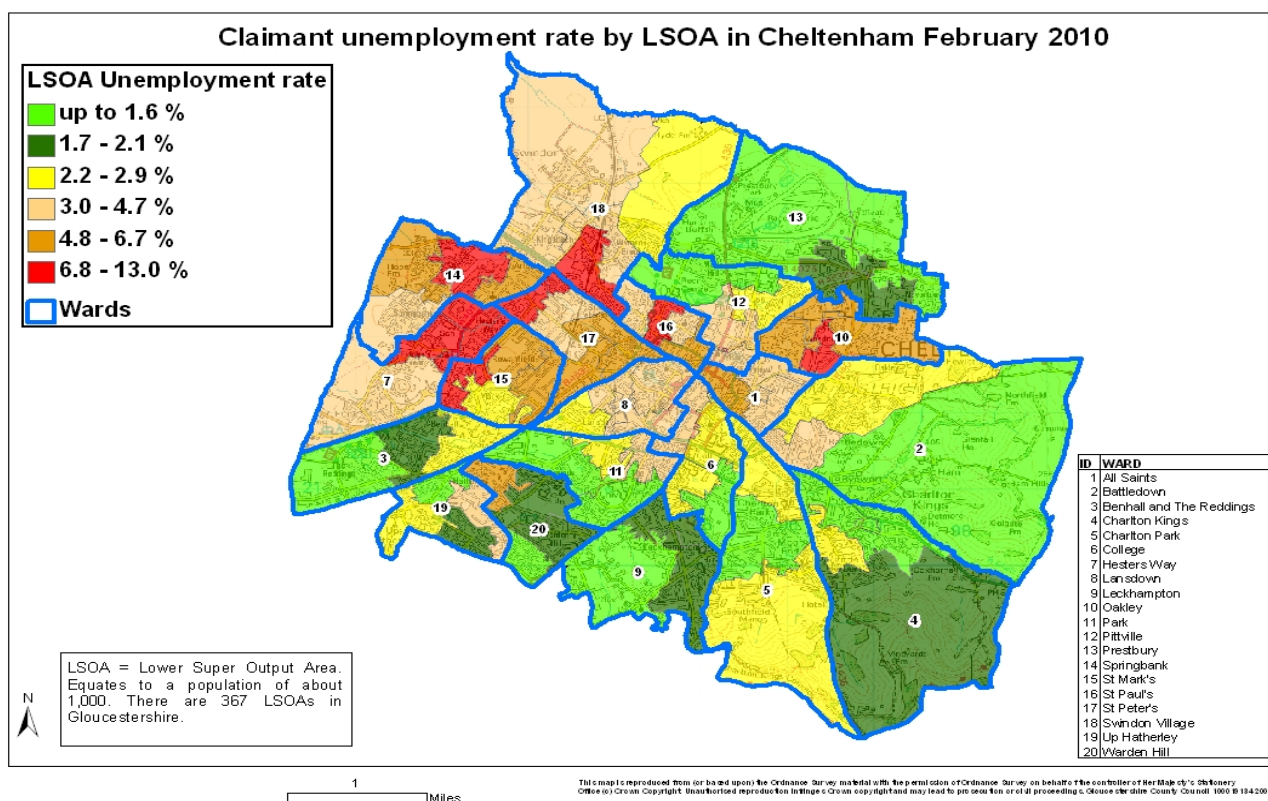
* 1 = "best" and 142 = "worst"

Table 10 shows overall claimant rates for Tewkesbury District wards and their position relative to all wards in Gloucestershire.

PART 5: MAP SHOWING DISTRIBUTION OF CLAIMANT RATE ACROSS GLOUCESTERSHIRE



PART 5: MAP SHOWING DISTRIBUTION OF CLAIMANT RATE ACROSS GLOUCESTERSHIRE



PART 6: YOUNG PEOPLE NOT IN EDUCATION, EMPLOYMENT OR TRAINING (NEET) IN GLOUCESTERSHIRE

Data provided by Prospects, the Connexions service in Gloucestershire on the situation of young people (16-18) in Gloucestershire who are not in education, employment or formal training.

Connexions Gloucestershire is required to report performance with the 16-18 age range against nationally defined criteria for counting the NEET group. The NEET group includes young people actively seeking education, employment or training as well as those young people who are either not yet ready or who are unable to access these opportunities because of their personal circumstances. The figures quoted below include young people in both of these categories.

Summary

As at the end of February 2010 there were 610 young people aged 16-18 not in education, employment or training in Gloucestershire and this figure translates into an adjusted (*) 16-18 NEET population of 3.8%. This figure evidences a 0.1% decrease from the performance achieved at the end of January 2010. Two of the area Teams have seen a reduction in NEETs this month compared to last month. Although we have seen an increase in the NEET percentage, the NEET group has only increased by 7 young people. The overall cohort size has reduced by 488 young people, which has resulted in the percentage being affected.

Total NEET Group by District Area 28th February 2010

	Cheltenham	Cotswold	Forest	Gloucester	Stroud	Tewkesbury	Total
Number of NEET	135	48	85	164	109	69	610
Cohort	2783	2472	2605	4727	2916	2003	17506
% NEET	4.8%	1.9%	3.3%	3.5%	3.7%	3.4%	3.8%

January Guarantee

The Prime Minister announced on 18th November plans to build on the September guarantee by guaranteeing the offer of a place on an Entry to Employment programme to all 16 and 17 year olds who are not in education, employment or training (NEET) in January 2010.

January is a key point in the year when additional support is needed. Seasonal employment and short courses come to an end and some young people realise that their initial choice was not right for them and do not return to school/College after the Christmas holiday. This Guarantee will allow young people who are NEET to reengage quickly in positive and productive learning, remain motivated and engaged. We will thereby reduce the risk of long term disengagement.

In Gloucestershire we are supporting this and have contacted young people for whom the guarantee applies to encourage them to take up this opportunity. We will be recording and monitoring against this between January and the end of March 2010.

If you would like to receive any further information on Gloucestershire's NEET strategy then please contact Ruth.Critchlow@gloucestershire.gov.uk or telephone 01452 551267.

(*) Adjustment includes a proportion of young people aged 16-18 whose outcomes are not-known to Connexions Gloucestershire