

Unemployment Bulletin

Issue 208 November 2025

Contents

Part 1: Summary A summary of unemployment data at district, County, regional and national level	1
Part 2: County Unemployment figures for the County compared to the South West and the rest of the UK	3
Part 3: Districts A comparative break down of unemployment figures by district	4
Part 4: Wards Further breakdown of unemployment figures by ward:	
Cheltenham	6
Cotswolds	8
Forest of Dean	10
Gloucester	12
Stroud	14
Tewkesbury	16
Part 5: Map Distribution of claimant rate across Gloucestershire	18
Part 6: Youth Unemployment Unemployment data for the 18-24 year old age group	20
Part 7: Young People Data about Young People Not in Education, Employment or Training (NEET)	21

Note on claimant count rates:

From Mar-25 data onwards, ONS have updated local authority, regional and national population estimates, used to calculate rates, to the latest estimates compatible with the 2021 Census. These include the most recent 2023 estimates and the rebased series from 2011 to 2022.

Produced by:

Data, Analysis & Insights Team
Planning, Performance and Insight
Gloucestershire County Council
December 2025

The Claimant Count is a measure of the number of people who are unemployed and claiming benefits. From 1996 until the recent introduction of Universal Credit, this was based on the number of people claiming Jobseeker's Allowance. However, since its introduction some unemployment benefit claimants will be claiming Universal Credit instead. **To reflect this change, the Claimant Count has been expanded to include people claiming Jobseeker's Allowance plus those who claim Universal Credit and who are searching for work.**

Since 2016 Gloucestershire has been transitioning to full Universal Credit with the process due to be completed in 2025. This means a broader span of claimants will be required to look for work than under Jobseekers Allowance. As more people are brought within the coverage of Universal Credit, the Claimant Count is set to rise. In addition, in May 2024 the DWP rolled out an increase in the administrative earnings threshold (AET) for full work search conditionality. This means a cohort of claimants who are in work but on an income below the AET will now be required to search for work. This change is likely to affect around 180,000 claimants across the country over around 6 months, increasing the Claimant Count over that time. More information about Universal Credit please see the [ONS website](#).

INTRODUCTION

The Unemployment Bulletin provides a monthly update on unemployment data for Gloucestershire, the South West region and the United Kingdom. It is produced by the Data, Analysis & Insights Team in the County Council's Planning, Performance and Insight function. The data are sourced from the Office for National Statistics via Nomis (www.nomis.co.uk). All data are rounded to the nearest 5 and may not precisely add to the sum of the number of people claiming JSA, and the number of people claiming Universal Credit required to seek work, due to independent rounding.

PART 1: SUMMARY

The claimant rate in Gloucestershire increased to 2.7% in November 2025. The South West rate increased to 2.8%, whilst the UK rate remained at 3.9%. Gloucestershire's rate was 0.1% lower than the South West average of 2.8%, and 1.2% lower than the UK average of 3.9%.

The claimant count in Gloucestershire in November 2025 increased by 195 people. The amount of people claiming in November was 1.9% higher than the number in October. This compares to a 2.4% increase in the South West and a 1.1% increase in the UK.

DISTRICTS AT A GLANCE

At a glance unemployment information grouped by district. Includes:

Claimant count: Total number of people claiming Job Seekers Allowance and Universal Credit who are not in work in November 2025

Claimant count change on previous month: How much larger/smaller November's claimant count is compared to October expressed as a %

Claimant rate: The % of working age population claiming Job Seekers Allowance and Universal Credit who are not in work in November 2025

Highest claiming ward: The ward with the highest claim count in that district and the rate

CHELTENHAM BOROUGH

Claimant count:	2,070
Claimant count change on previous month:	-1.0%
Claimant rate:	2.7%
Highest claiming ward(s)	Oakley (5.8%)

GLOUCESTER CITY

Claimant count:	3,120
Claimant count change on previous month:	1.5%
Claimant rate:	3.6%
Highest claiming ward(s)	Westgate (7.7%)

COTSWOLD DISTRICT

Claimant count:	1,080
Claimant count change on previous month:	5.9%
Claimant rate:	2.1%
Highest claiming ward(s)	New Mills (4.5%)

STROUD DISTRICT

Claimant count:	1,545
Claimant count change on previous month:	2.3%
Claimant rate:	2.1%
Highest claiming ward(s)	Stroud Central (4.3%)

FOREST OF DEAN

Claimant count:	1,415
Claimant count change on previous month:	2.9%
Claimant rate:	2.7%
Highest claiming ward(s)	Cinderford West (5.0%)

TEWKESBURY BOROUGH

Claimant count:	1,395
Claimant count change on previous month:	2.2%
Claimant rate:	2.4%
Highest claiming ward(s)	Brockworth East (4.1%)

PART 2: UK, SW AND GLOUCESTERSHIRE INDICATORS

The unemployment situation in Gloucestershire compared to the South West and the UK.

Claimant Rate

Figure 1: Claimant Rate for Gloucestershire, the South West and UK over the past year

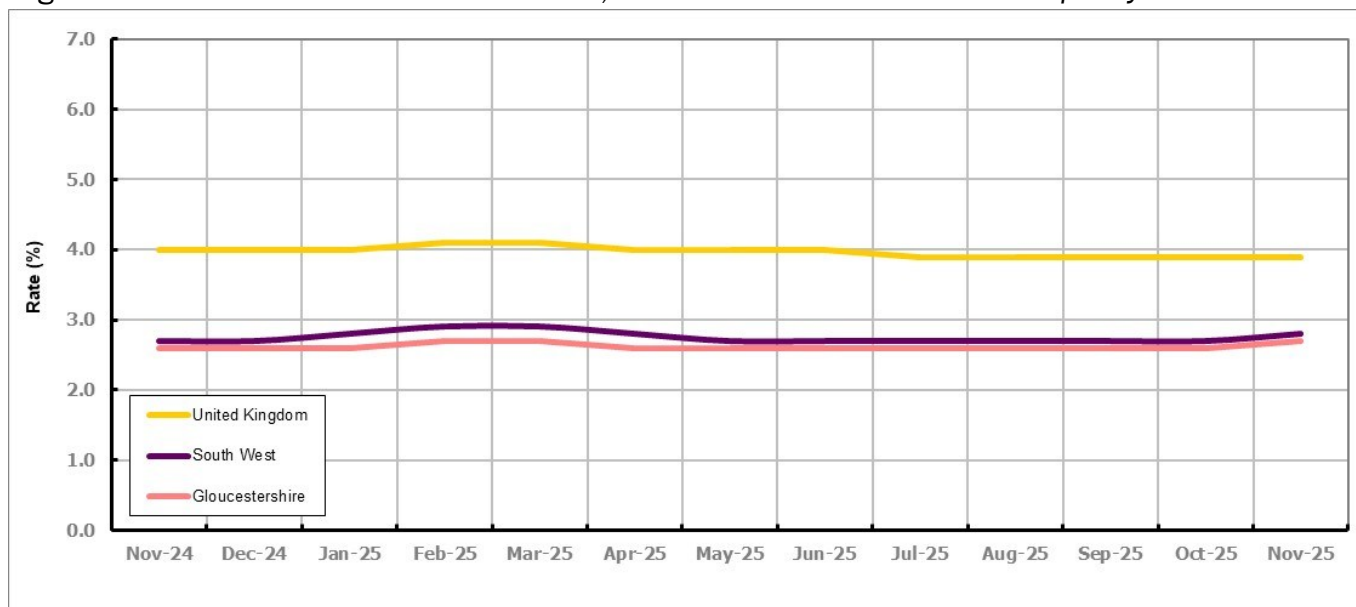


Figure 1 shows the claimant rate for Gloucestershire at 2.7% in November 2025. The Gloucestershire rate has been lower than the South West average since August 2024. On average, it has been approximately 1.4% lower than the UK average since the same month of the previous year.

Claimant Count

Table 1: Analysis of UK, South West and Gloucestershire Claimant Counts

Area	Claimant Count in November 2025	% change on October 2025	Consecutive months increasing
UK	1,667,655	1.1%	0
South West	96,945	2.4%	2
Gloucestershire	10,630	1.9%	0

Table 1 shows that in November 2025, the number of claimants in Gloucestershire was 1.9% higher than the number in October 2025.

PART 3: LOCAL AUTHORITY DISTRICT ANALYSIS

Claimant Rate and Claimant Count

Figure 2: Claimant Rate (%) across Gloucestershire - November 2025

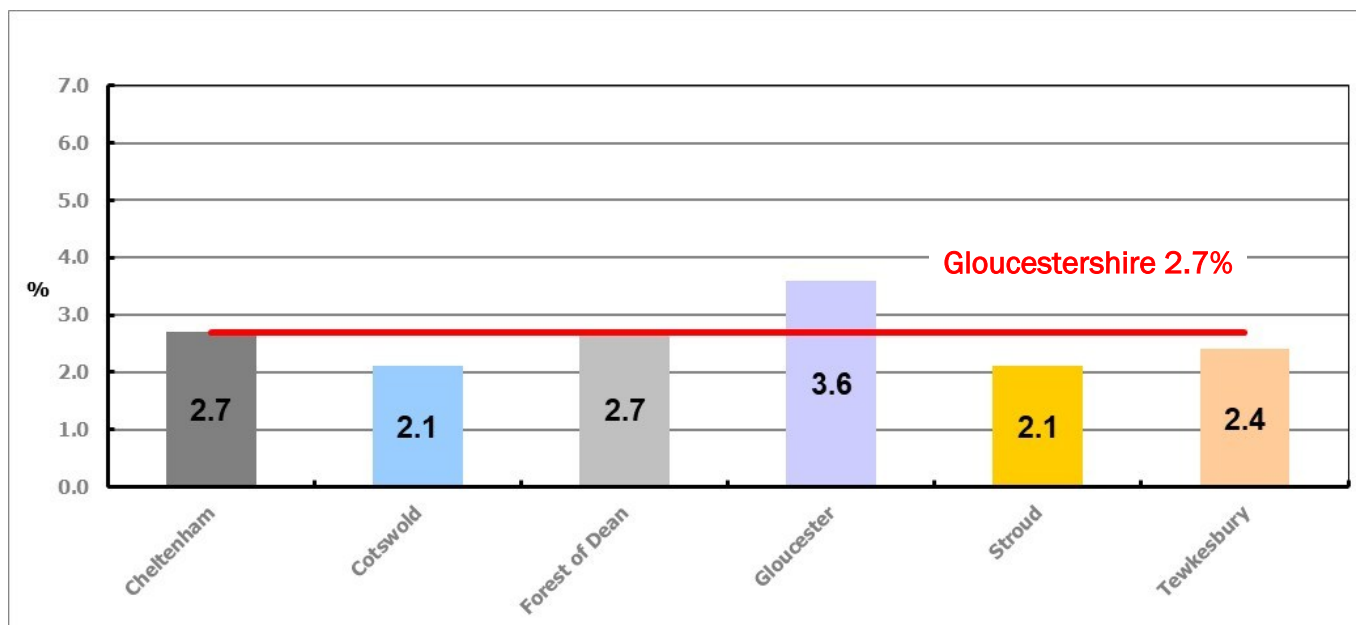


Figure 2 shows the claimant rate for November 2025 in Gloucestershire. Between October and November 2025 the rate increased in all districts, except Cheltenham which saw a decrease and Gloucester which was unchanged.

Table 2: Analysis of Gloucestershire and District Claimant Counts

Total	Nov 25 Number	Nov 25 Rate	Oct 25 Number	Oct 25 Rate	Monthly change	% monthly change	Monthly change of rate
Gloucestershire	10,630	2.7	10,435	2.6	195	1.9%	0.1
Cheltenham	2,070	2.7	2,090	2.8	-20	-1.0%	-0.1
Cotswold	1,080	2.1	1,020	2.0	60	5.9%	0.1
Forest of Dean	1,415	2.7	1,375	2.6	40	2.9%	0.1
Gloucester	3,120	3.6	3,075	3.6	45	1.5%	0.0
Stroud	1,545	2.1	1,510	2.0	35	2.3%	0.1
Tewkesbury	1,395	2.4	1,365	2.3	30	2.2%	0.1

Table 2 shows the change in the claimant count in November 2025 compared to October. All districts saw an increase in the number of claimants except Cheltenham which saw a decrease

Table 3: Analysis of Male Gloucestershire and District Claimant Counts

Male	Nov 25 Number	Nov 25 Rate	Oct 25 Number	Oct 25 Rate	Monthly change	% monthly change	Monthly change of rate
Gloucestershire	5,860	3.0	5,690	2.9	170	3.0%	0.1
Cheltenham	1,220	3.2	1,210	3.2	10	0.8%	0.0
Cotswold	535	2.1	495	2.0	40	8.1%	0.1
Forest of Dean	765	2.9	740	2.9	25	3.4%	0.0
Gloucester	1,820	4.2	1,760	4.1	60	3.4%	0.1
Stroud	805	2.2	770	2.1	35	4.5%	0.1
Tewkesbury	725	2.6	715	2.5	10	1.4%	0.1

Table 3 shows the change in the male claimant count in November 2025 compared to October. All districts saw an increase in the number of male claimants.

Table 4: Analysis of Female Gloucestershire and District Claimant Counts

Female	Nov 25 Number	Nov 25 Rate	Oct 25 Number	Oct 25 Rate	Monthly change	% monthly change	Monthly change of rate
Gloucestershire	4,770	2.4	4,745	2.4	25	0.5%	0.0
Cheltenham	850	2.3	880	2.3	-30	-3.4%	0.0
Cotswold	545	2.0	525	1.9	20	3.8%	0.1
Forest of Dean	655	2.5	635	2.4	20	3.1%	0.1
Gloucester	1,305	3.0	1,315	3.1	-10	-0.8%	-0.1
Stroud	745	2.0	740	2.0	5	0.7%	0.0
Tewkesbury	670	2.2	650	2.2	20	3.1%	0.0

Table 4 shows the change in the female claimant count in November 2025 compared to October. All districts saw an increase in the number of female claimants except Cheltenham and Gloucester which saw a decrease.

PART 4: LOCAL AUTHORITY DISTRICT AND WARD ANALYSIS

This section covers the six districts and a comparison of their constituent wards.

4.1 Cheltenham Borough

Claimant Rate and Claimant Count

Figure 3: Cheltenham Borough claimant rate over the last year

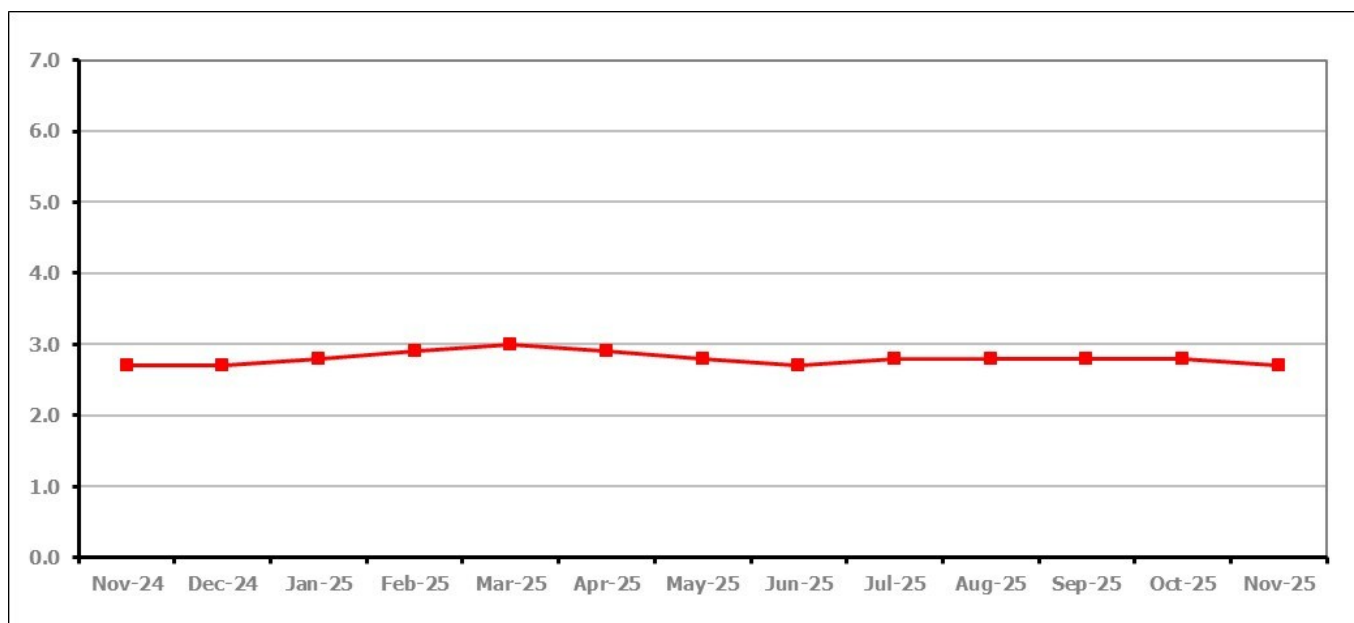


Figure 3 shows the claimant rate in Cheltenham decreased to 2.7% in November 2025.

Figure 4: Claimant rates across Cheltenham Borough wards - November 2025

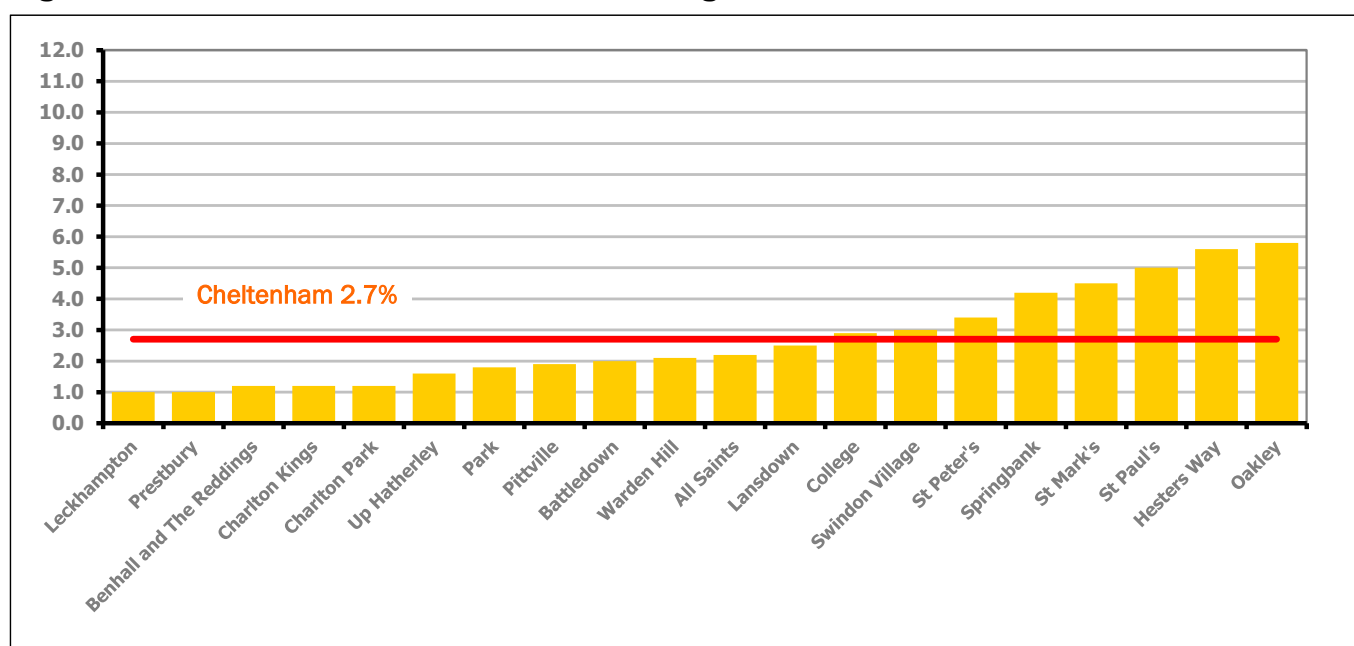


Figure 4 shows the claimant rates for Cheltenham Borough wards. The red line represents the average claimant rate across the Borough of 2.7%. Eight wards lie above the average.

PART 4: LOCAL AUTHORITY DISTRICT AND WARD ANALYSIS

4.1 Cheltenham Borough continued...

Table 5: Analysis of Claimant Count at Cheltenham Borough ward level - November 2025

District	Ward	Rate	Rank*
Cheltenham	Leckhampton	1.0	3
Cheltenham	Prestbury	1.0	3
Cheltenham	Benhall and The Reddings	1.2	10
Cheltenham	Charlton Kings	1.2	10
Cheltenham	Charlton Park	1.2	10
Cheltenham	Up Hatherley	1.6	29
Cheltenham	Park	1.8	37
Cheltenham	Pittville	1.9	42
Cheltenham	Battledown	2.0	52
Cheltenham	Warden Hill	2.1	58
Cheltenham	All Saints	2.2	66
Cheltenham	Lansdown	2.5	81
Cheltenham	College	2.9	100
Cheltenham	Swindon Village	3.0	104
Cheltenham	St Peter's	3.4	115
Cheltenham	Springbank	4.2	123
Cheltenham	St Mark's	4.5	126
Cheltenham	St Paul's	5.0	128
Cheltenham	Hesters Way	5.6	135
Cheltenham	Oakley	5.8	136

	lowest 10% of county
	first quartile of county
	second quartile of county
	third quartile of county
	fourth quartile of county
	highest 10% of county

* 1 = "best" and 138 = "worst"

Table 5 shows overall claimant rates for Cheltenham Borough wards and their position relative to all wards in Gloucestershire.

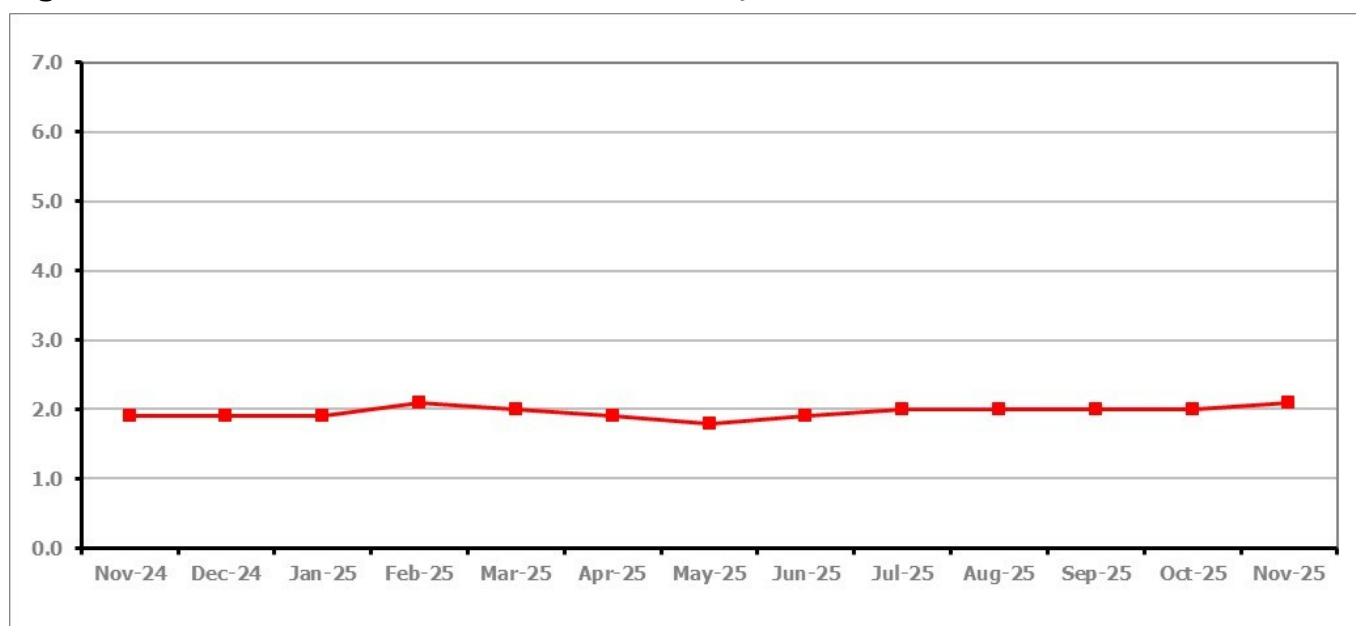
PART 4: LOCAL AUTHORITY DISTRICT AND WARD ANALYSIS**4.2 Cotswold District****Claimant Rate and Claimant Count***Figure 5: Cotswold District claimant rate over the last year*

Figure 5 shows the claimant rate in Cotswold District increased to 2.1% in November 2025.

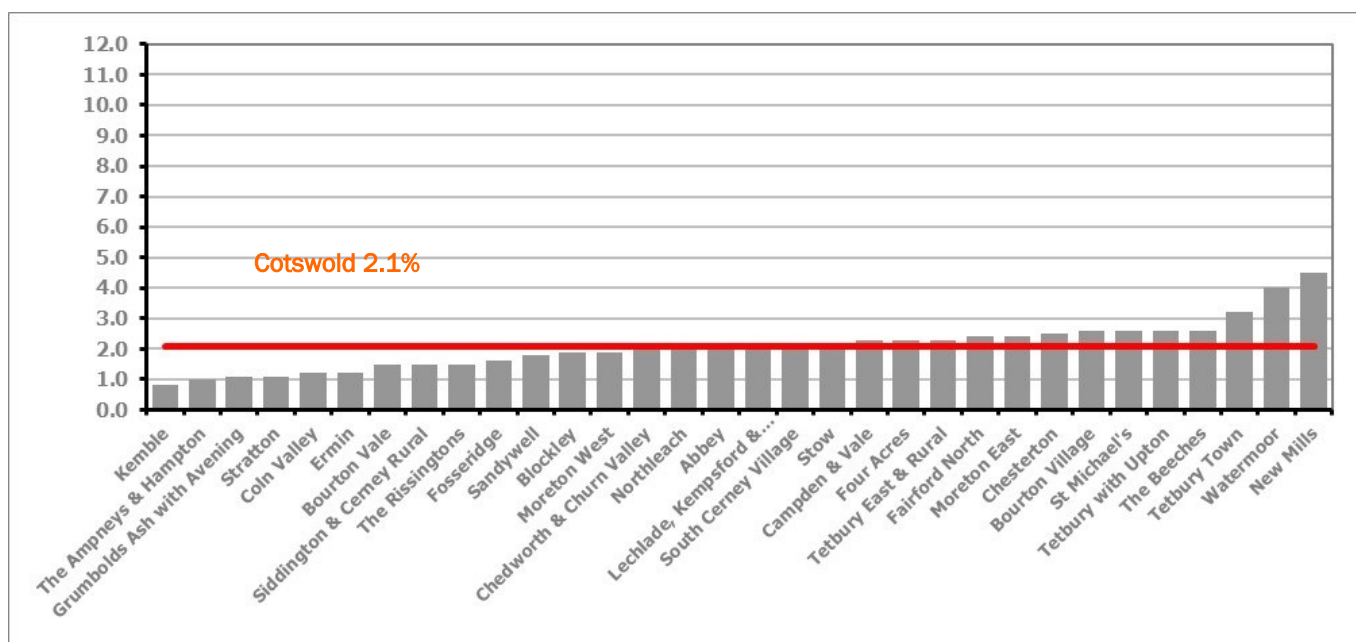
Figure 6: Claimant rates across Cotswold District wards – November 2025

Figure 6 shows the claimant rates for Cotswold District wards. The red line represents the average claimant rate across the District of 2.1%. Fifteen wards lie above the average.

PART 4: LOCAL AUTHORITY DISTRICT AND WARD ANALYSIS

4.2 Cotswold District continued...

Table 6: Analysis of Claimant Count at Cotswold District ward level - November 2025

District	Ward	Rate	Rank*
Cotswold	Kemble	0.8	2
Cotswold	The Ampneys & Hampton	1.0	3
Cotswold	Grumbolds Ash with Avening	1.1	7
Cotswold	Stratton	1.1	7
Cotswold	Coln Valley	1.2	10
Cotswold	Ermin	1.2	10
Cotswold	Bourton Vale	1.5	24
Cotswold	Siddington & Cerney Rural	1.5	24
Cotswold	The Rissingtons	1.5	24
Cotswold	Fosseridge	1.6	29
Cotswold	Sandywell	1.8	37
Cotswold	Blockley	1.9	42
Cotswold	Moreton West	1.9	42
Cotswold	Chedworth & Churn Valley	2.0	52
Cotswold	Northleach	2.0	52
Cotswold	Abbey	2.1	58
Cotswold	Lechlade, Kempsford & Fairford South	2.1	58
Cotswold	South Cerney Village	2.2	66
Cotswold	Stow	2.2	66
Cotswold	Campden & Vale	2.3	70
Cotswold	Four Acres	2.3	70
Cotswold	Tetbury East & Rural	2.3	70
Cotswold	Fairford North	2.4	76
Cotswold	Moreton East	2.4	76
Cotswold	Chesterton	2.5	81
Cotswold	Bourton Village	2.6	87
Cotswold	St Michael's	2.6	87
Cotswold	Tetbury with Upton	2.6	87
Cotswold	The Beeches	2.6	87
Cotswold	Tetbury Town	3.2	110
Cotswold	Watermoor	4.0	120
Cotswold	New Mills	4.5	126

	lowest 10% of county
	first quartile of county
	second quartile of county
	third quartile of county
	fourth quartile of county
	highest 10% of county

* 1 = "best" and 138 = "worst"

Table 6 shows overall claimant rates for Cotswold District wards and their position relative to all wards in Gloucestershire.

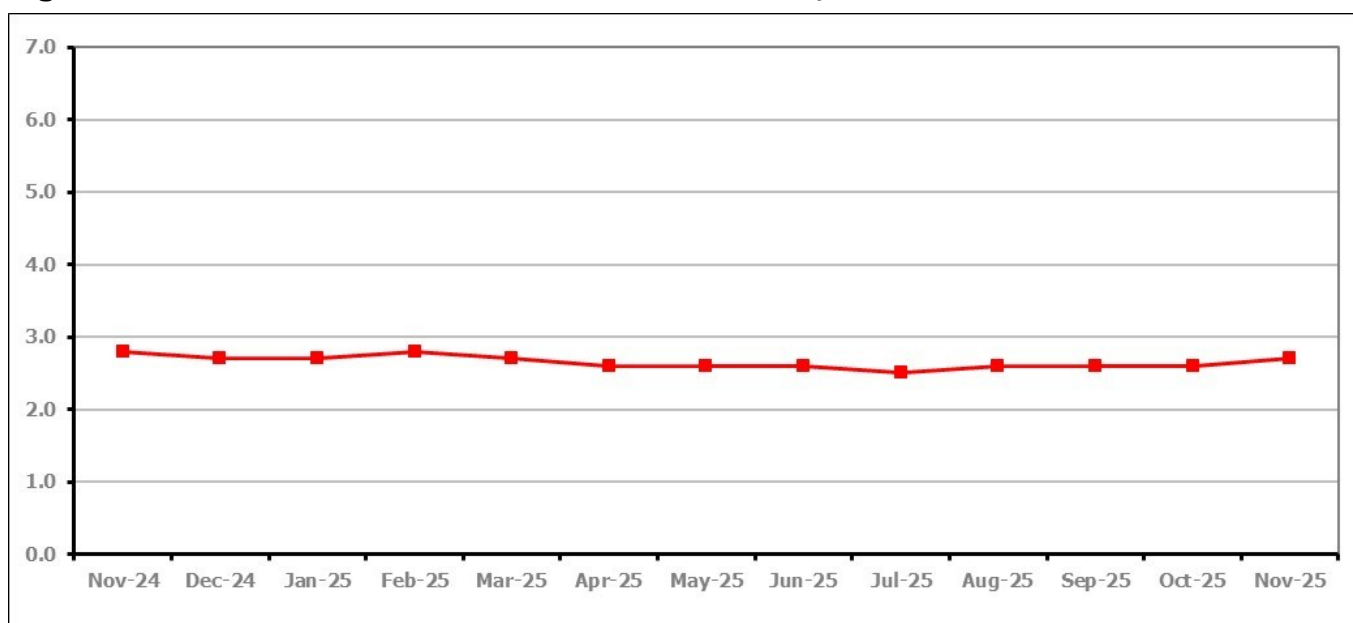
PART 4: LOCAL AUTHORITY DISTRICT AND WARD ANALYSIS**4.3 Forest of Dean District****Claimant Rate and Claimant Count***Figure 7: Forest of Dean District claimant rate over the last year*

Figure 7 shows the claimant rate in the Forest of Dean increased to 2.7% in November 2025.

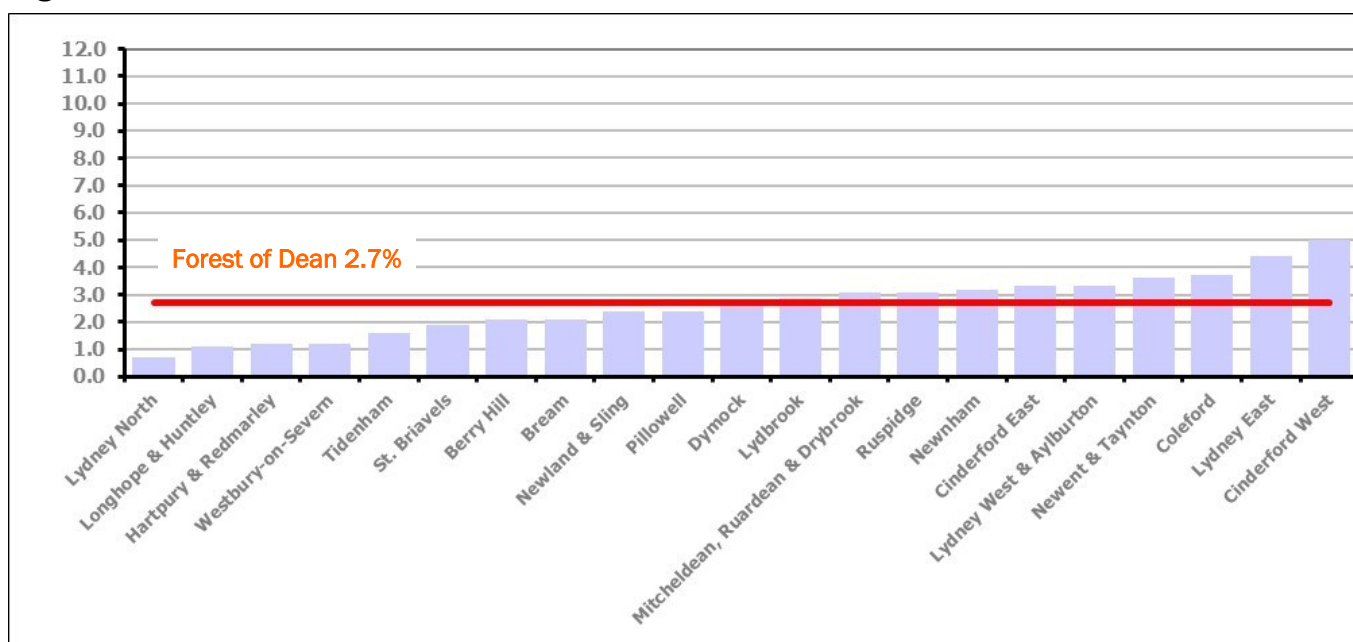
Figure 8: Claimant rates across Forest of Dean District wards – November 2025

Figure 8 shows the claimant rates for the Forest of Dean District wards. The red line represents the average claimant rate across the District of 2.7%. Eleven wards lie above the average.

PART 4: LOCAL AUTHORITY DISTRICT AND WARD ANALYSIS

4.3 Forest of Dean District continued...

Table 7: Analysis of Claimant Count at Forest of Dean District ward level - November 2025

District	Ward	Rate	Rank*
Forest	Lydney North	0.7	1
Forest	Longhope & Huntley	1.1	7
Forest	Hartpury & Redmarley	1.2	10
Forest	Westbury-on-Severn	1.2	10
Forest	Tidenham	1.6	29
Forest	St. Briavels	1.9	42
Forest	Berry Hill	2.1	58
Forest	Bream	2.1	58
Forest	Newland & Sling	2.4	76
Forest	Pillowell	2.4	76
Forest	Dymock	2.8	98
Forest	Lydbrook	2.9	100
Forest	Mitcheldean, Ruardean & Drybrook	3.1	107
Forest	Ruspidge	3.1	107
Forest	Newnham	3.2	110
Forest	Cinderford East	3.3	112
Forest	Lydney West & Aylburton	3.3	112
Forest	Newent & Taynton	3.6	116
Forest	Coleford	3.7	118
Forest	Lydney East	4.4	125
Forest	Cinderford West	5.0	128

	lowest 10% of county
	first quartile of county
	second quartile of county
	third quartile of county
	fourth quartile of county
	highest 10% of county

* 1 = "best" and 138 = "worst"

Table 7 shows overall claimant rates for the Forest of Dean District wards and their position relative to all wards in Gloucestershire.

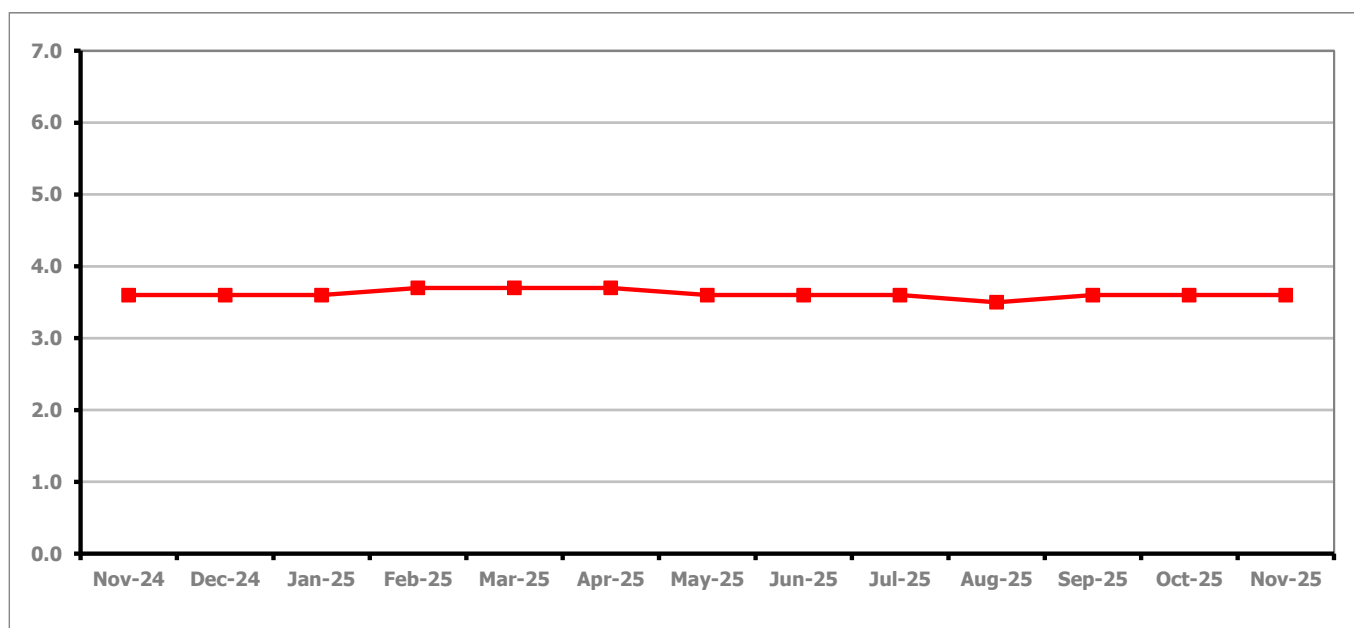
PART 4: LOCAL AUTHORITY DISTRICT AND WARD ANALYSIS**4.4 Gloucester City****Claimant Rate and Claimant Count***Figure 9: Gloucester City claimant rate over the last year*

Figure 9 shows the claimant rate for Gloucester City remained at 3.6% in November 2025.

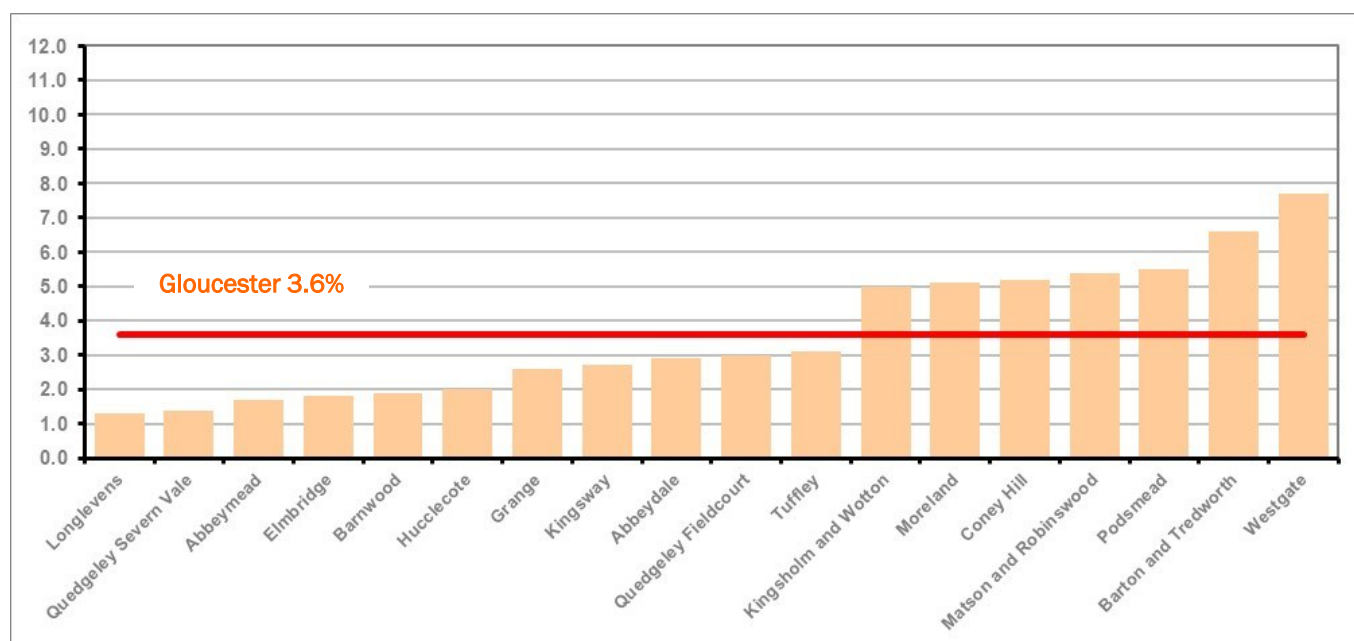
Figure 10: Claimant rates across Gloucester City wards - November 2025

Figure 10 shows the claimant rates for Gloucester City district wards. The red line represents the average claimant rate across the City of 3.6%. Seven wards lie above the average.

PART 4: LOCAL AUTHORITY DISTRICT AND WARD ANALYSIS

4.4 Gloucester City continued...

Table 8: Analysis of Claimant Count at Gloucester City ward level - November 2025

District	Ward	Rate	Rank*
Gloucester	Longlevens	1.3	19
Gloucester	Quedgeley Severn Vale	1.4	21
Gloucester	Abbeymead	1.7	33
Gloucester	Elmbridge	1.8	37
Gloucester	Barnwood	1.9	42
Gloucester	Hucclecote	2.0	52
Gloucester	Grange	2.6	87
Gloucester	Kingsway	2.7	93
Gloucester	Abbeylea	2.9	100
Gloucester	Quedgeley Fieldcourt	3.0	104
Gloucester	Tuffley	3.1	107
Gloucester	Kingsholm and Wotton	5.0	128
Gloucester	Moreland	5.1	131
Gloucester	Coney Hill	5.2	132
Gloucester	Matson and Robinswood	5.4	133
Gloucester	Podsmead	5.5	134
Gloucester	Barton and Tredworth	6.6	137
Gloucester	Westgate	7.7	138

	lowest 10% of county
	first quartile of county
	second quartile of county
	third quartile of county
	fourth quartile of county
	highest 10% of county

* 1 = "best" and 138 = "worst"

Table 8 shows overall claimant rates for Gloucester City wards and their position relative to all wards in Gloucestershire.

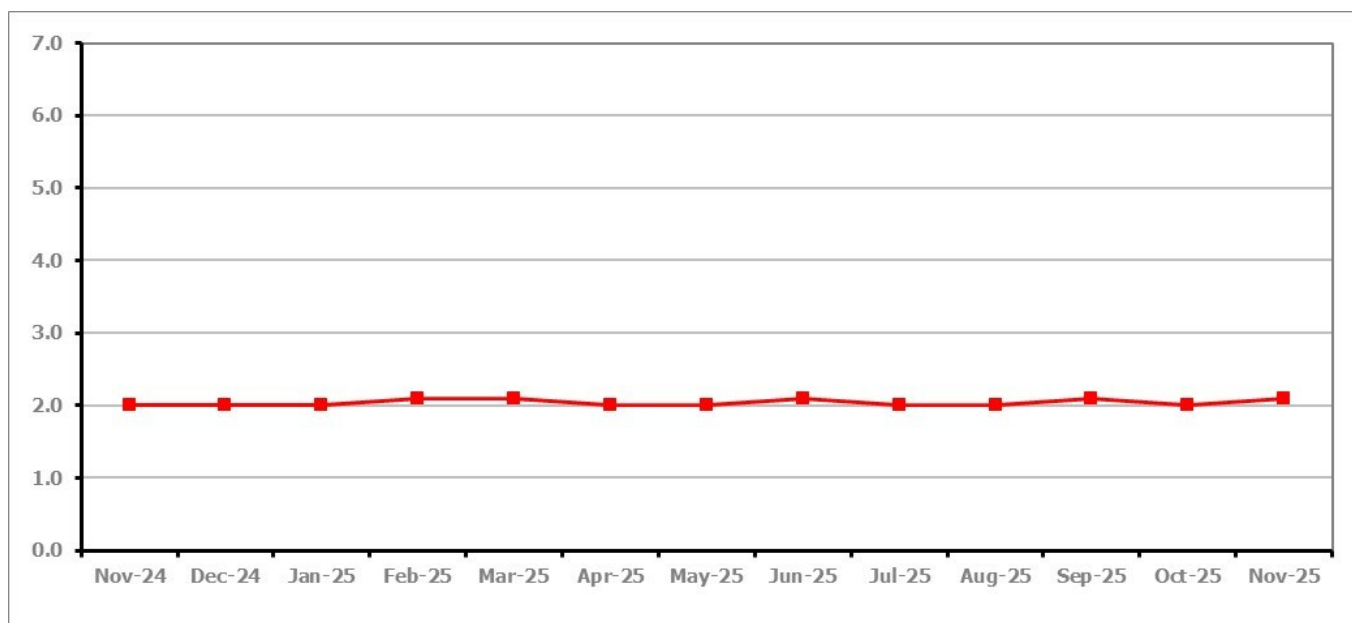
PART 4: LOCAL AUTHORITY DISTRICT AND WARD ANALYSIS**4.5 Stroud District****Claimant Rate and Claimant Count***Figure 11: Stroud District claimant rate over the last year*

Figure 11 shows the claimant rate for Stroud increased to 2.1% in November 2025.

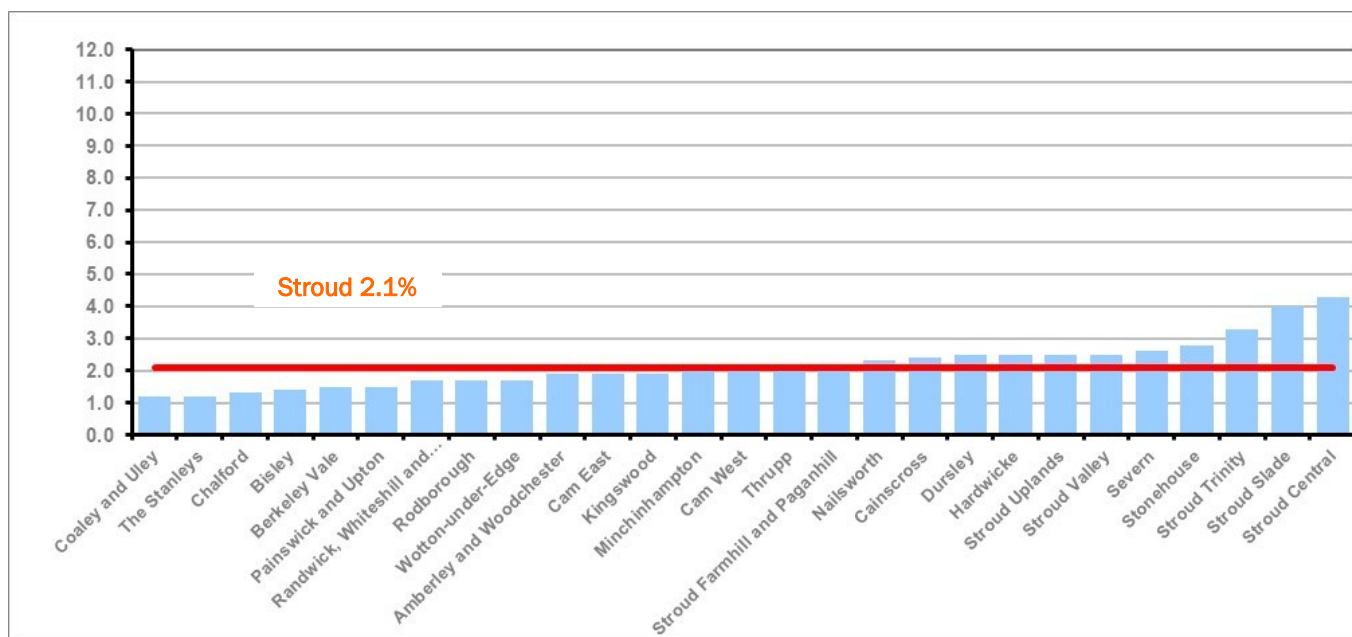
Figure 12: Claimant rates across Stroud District wards - November 2025

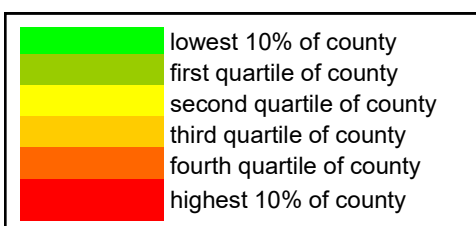
Figure 12 shows the claimant rates in Stroud District wards. The red line represents the average claimant rate across the District of 2.1%. Twelve wards are above the average.

PART 4: LOCAL AUTHORITY AND DISTRICT ANALYSIS

4.5 Stroud District continued...

Table 9: Analysis of Claimant Count at Stroud District ward level - November 2025

District	Ward	Rate	Rank*
Stroud	Coaley and Uley	1.2	10
Stroud	The Stanleys	1.2	10
Stroud	Chalford	1.3	19
Stroud	Bisley	1.4	21
Stroud	Berkeley Vale	1.5	24
Stroud	Painswick and Upton	1.5	24
Stroud	Randwick, Whiteshill and Ruscombe	1.7	33
Stroud	Rodborough	1.7	33
Stroud	Wotton-under-Edge	1.7	33
Stroud	Amberley and Woodchester	1.9	42
Stroud	Cam East	1.9	42
Stroud	Kingswood	1.9	42
Stroud	Minchinhampton	2.0	52
Stroud	Cam West	2.1	58
Stroud	Thrupp	2.1	58
Stroud	Stroud Farmhill and Paganhill	2.2	66
Stroud	Nailsworth	2.3	70
Stroud	Cainscross	2.4	76
Stroud	Dursley	2.5	81
Stroud	Hardwicke	2.5	81
Stroud	Stroud Uplands	2.5	81
Stroud	Stroud Valley	2.5	81
Stroud	Severn	2.6	87
Stroud	Stonehouse	2.8	98
Stroud	Stroud Trinity	3.3	112
Stroud	Stroud Slade	4.0	120
Stroud	Stroud Central	4.3	124



* 1 = "best" and 138 = "worst"

Table 9 shows overall claimant rates for Stroud District wards and their position relative to all wards in Gloucestershire.

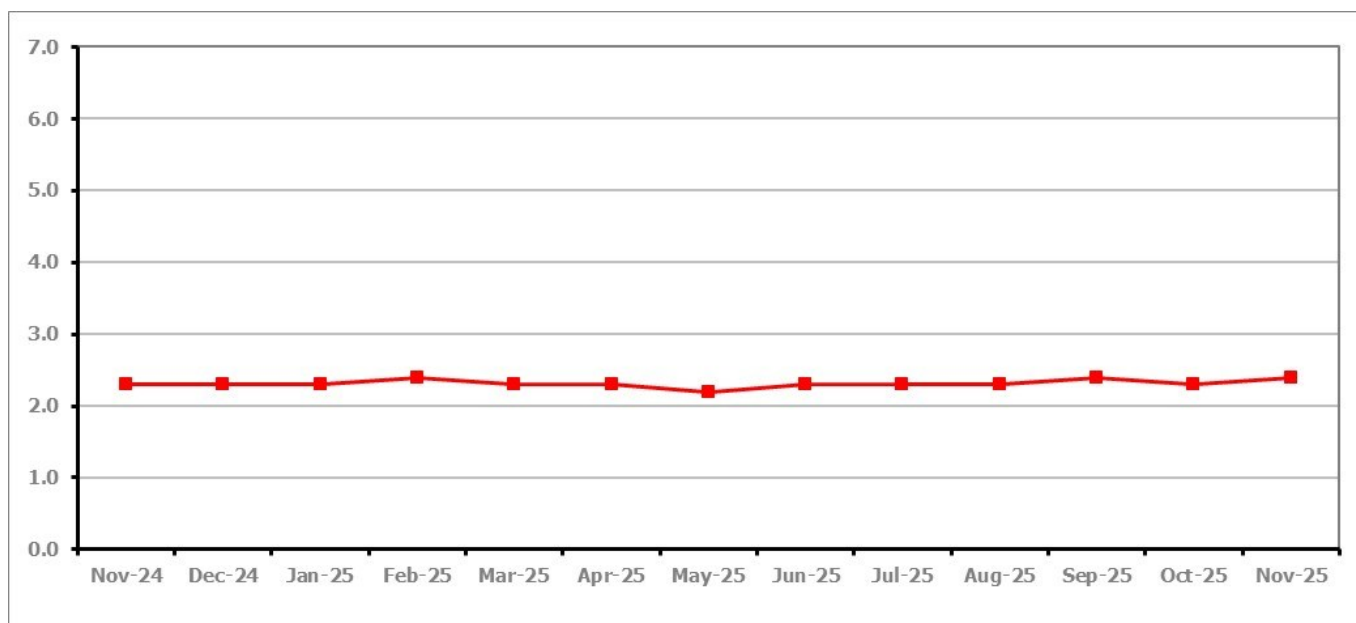
PART 4: LOCAL AUTHORITY DISTRICT AND WARD ANALYSIS**4.6 Tewkesbury Borough****Claimant Rate and Claimant Count***Figure 13: Tewkesbury Borough claimant rate over the last year*

Figure 13 shows the claimant rate for Tewkesbury Borough increased to 2.4% in November 2025.

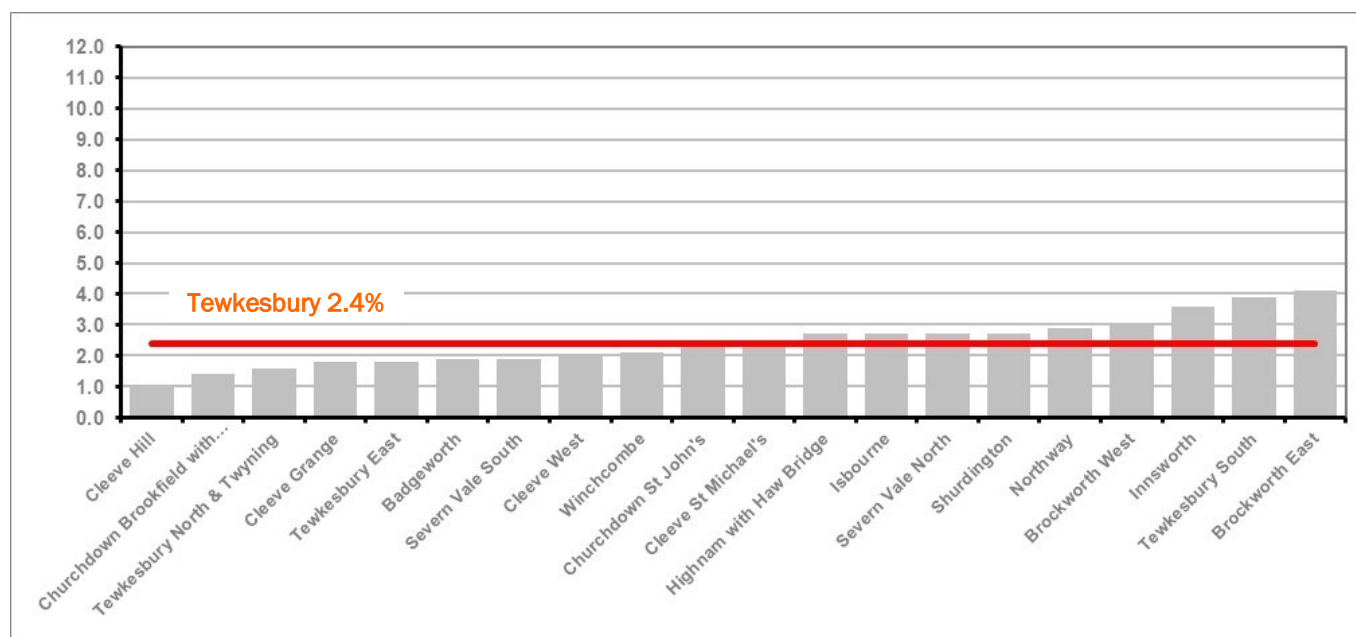
Figure 14: Claimant rates across Tewkesbury Borough wards - November 2025

Figure 14 shows the claimant rates in Tewkesbury Borough wards. The red line represents the average claimant rate across the District of 2.4%. Nine wards are above the average.

PART 4: LOCAL AUTHORITY AND DISTRICT ANALYSIS

4.6 Tewkesbury Borough continued...

Table 10: Analysis of Claimant Count at Tewkesbury Borough level - November 2025

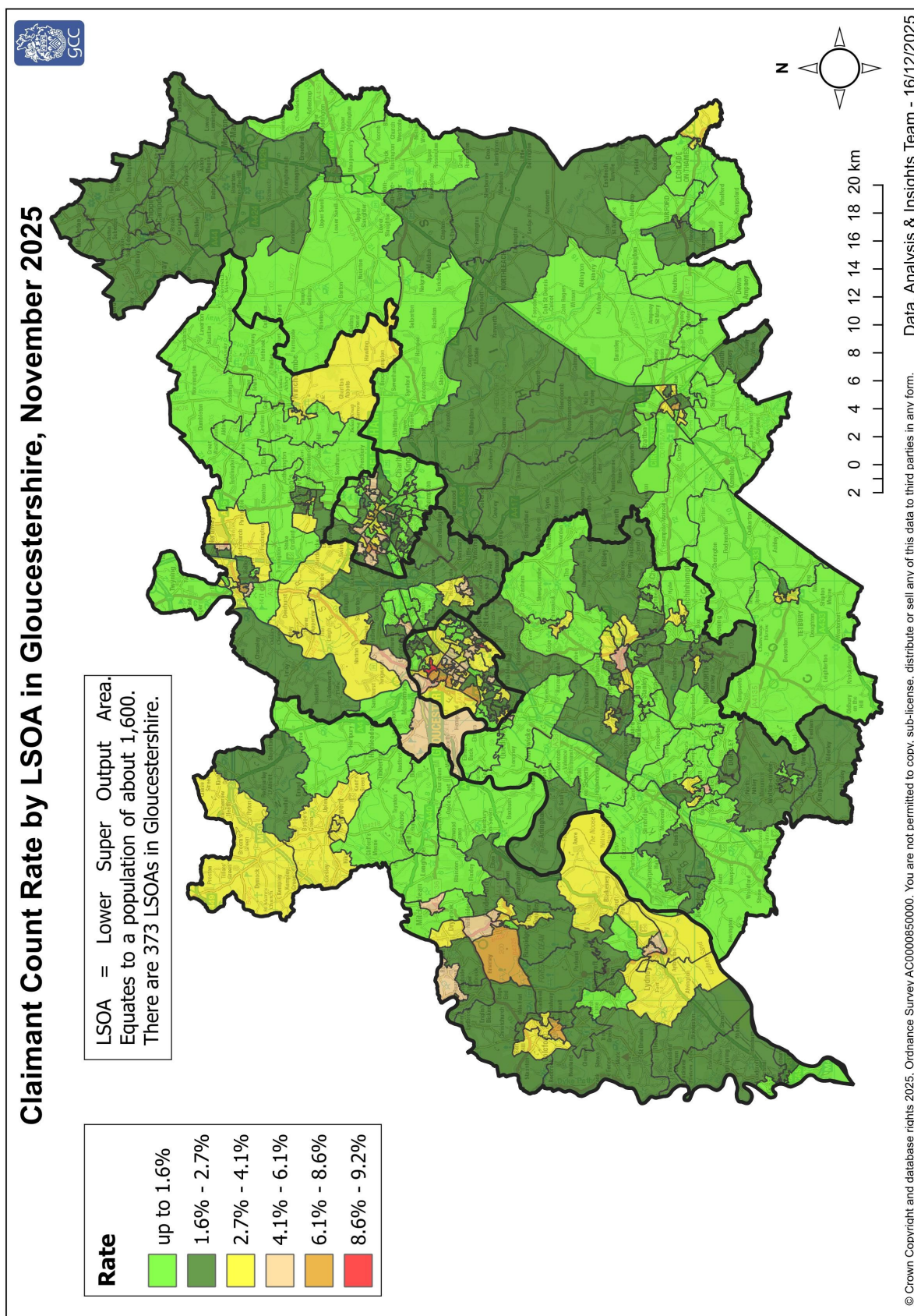
District	Ward	Rate	Rank*
Tewkesbury	Cleeve Hill	1.0	3
Tewkesbury	Churchdown Brookfield with Hucclecote	1.4	21
Tewkesbury	Tewkesbury North & Twynning	1.6	29
Tewkesbury	Cleeve Grange	1.8	37
Tewkesbury	Tewkesbury East	1.8	37
Tewkesbury	Badgeworth	1.9	42
Tewkesbury	Severn Vale South	1.9	42
Tewkesbury	Cleeve West	2.0	52
Tewkesbury	Winchcombe	2.1	58
Tewkesbury	Churchdown St John's	2.3	70
Tewkesbury	Cleeve St Michael's	2.3	70
Tewkesbury	Highnam with Haw Bridge	2.7	93
Tewkesbury	Isbourne	2.7	93
Tewkesbury	Severn Vale North	2.7	93
Tewkesbury	Shurdington	2.7	93
Tewkesbury	Northway	2.9	100
Tewkesbury	Brockworth West	3.0	104
Tewkesbury	Innsworth	3.6	116
Tewkesbury	Tewkesbury South	3.9	119
Tewkesbury	Brockworth East	4.1	122

	lowest 10% of county
	first quartile of county
	second quartile of county
	third quartile of county
	fourth quartile of county
	highest 10% of county

* 1 = "best" and 138 = "worst"

Table 10 shows overall claimant rates for Tewkesbury Borough wards and their position relative to all wards in Gloucestershire.

PART 5: MAP SHOWING DISTRIBUTION OF CLAIMANT RATE ACROSS GLOUCESTERSHIRE

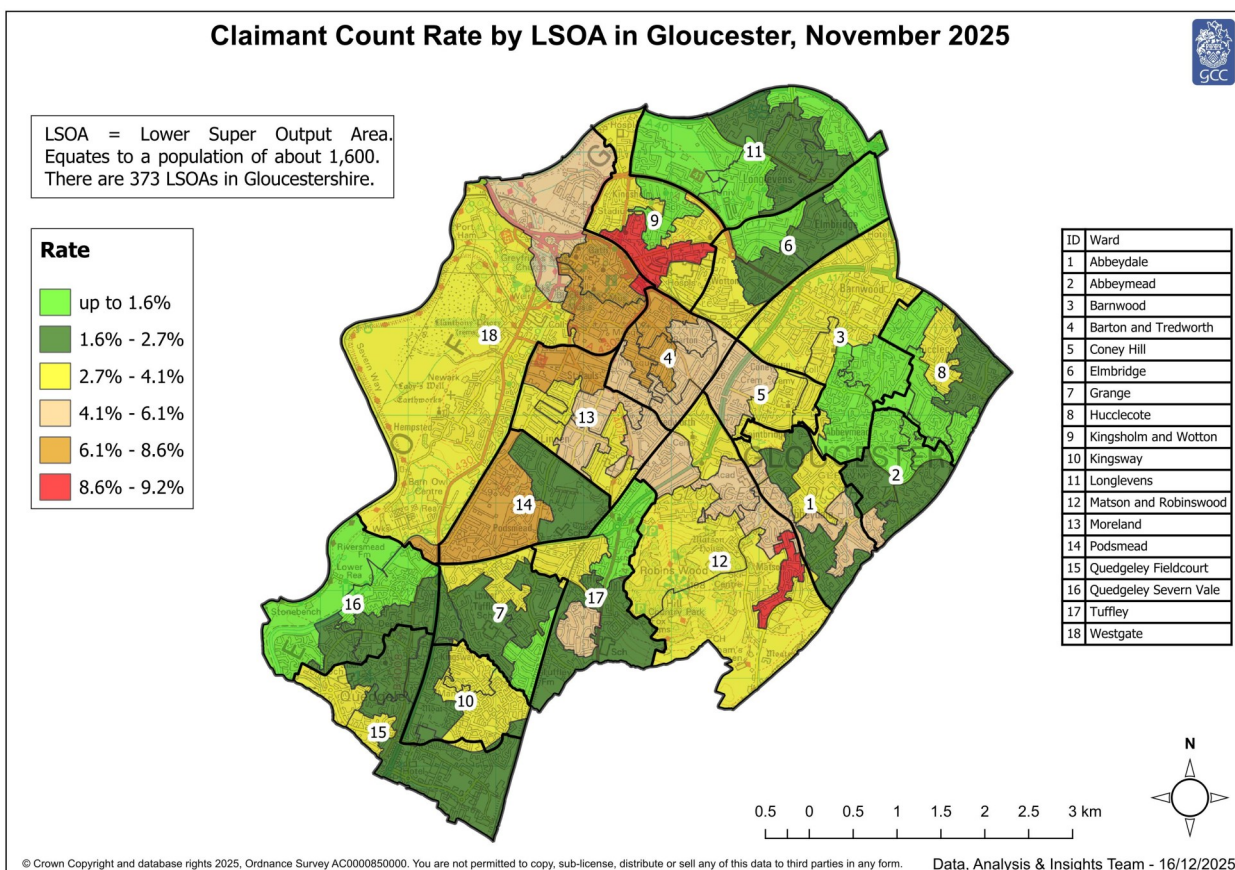
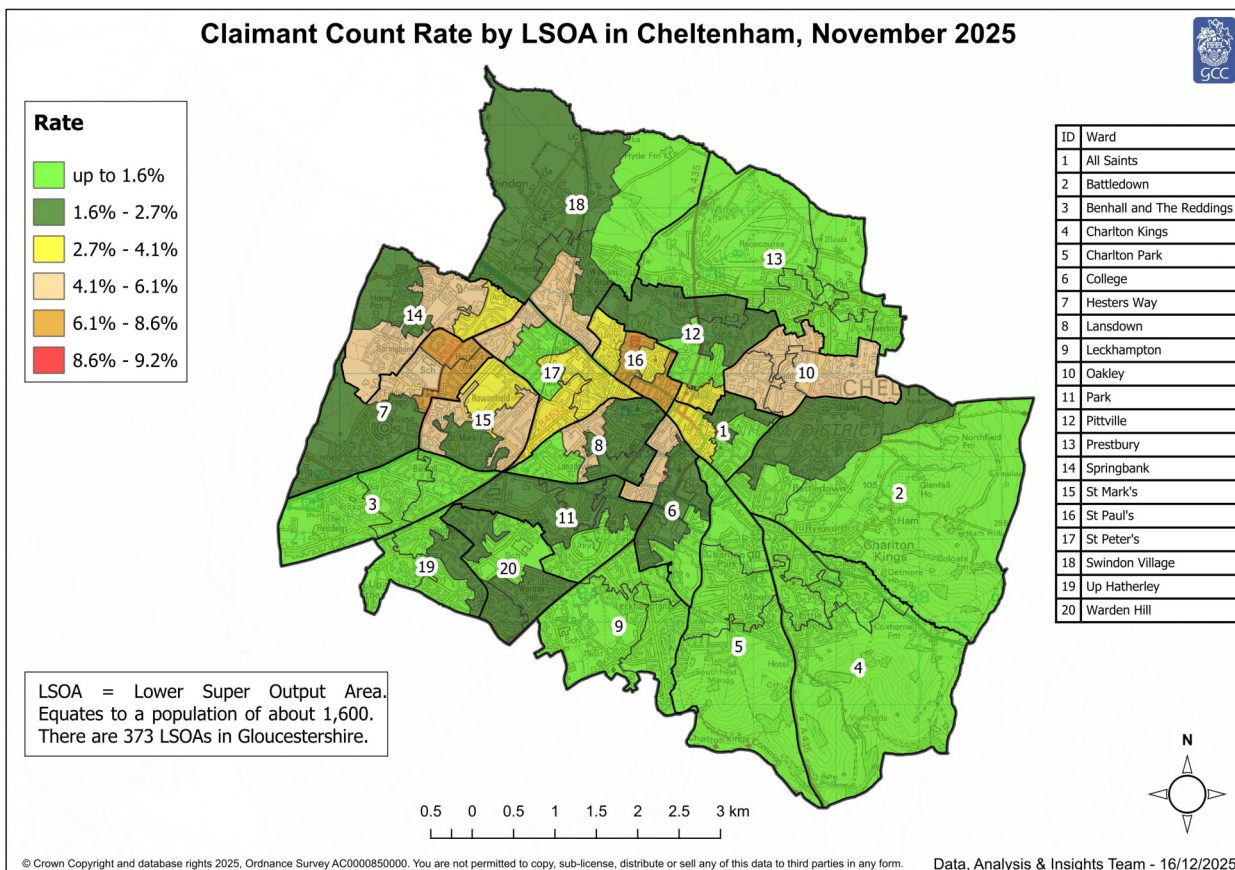


These maps currently show the 2011 LSOA boundaries.

Note: We have made changes to the way in which the rates illustrated on the maps are calculated - this means they are not comparable with those shown in previous bulletins.

Rates calculated by applying Lower Layer Super Output Area Population Estimates Mid-2022,
Office for National Statistics

PART 5: MAP SHOWING DISTRIBUTION OF CLAIMANT RATE ACROSS GLOUCESTERSHIRE



These maps currently show the 2011 LSOA boundaries.

Note: We have made changes to the way in which the rates illustrated on the maps are calculated - this means they are not comparable with those shown in previous bulletins.

Rates calculated by applying Lower Layer Super Output Area Population Estimates Mid-2022, Office for National Statistics

PART 6: YOUTH UNEMPLOYMENT(18-24 year olds)

Youth Claimant Rate and Claimant Count

Figure 15: Claimant Count for Gloucestershire over the past year

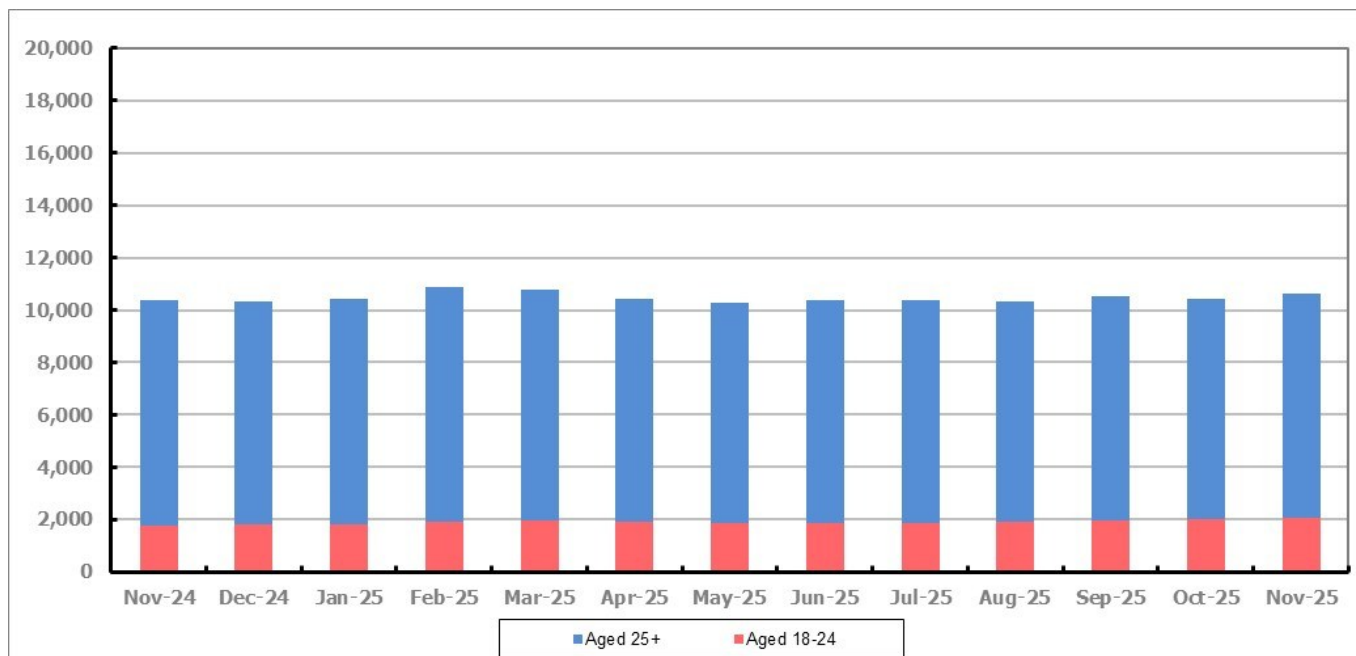


Figure 15 shows that in November 2025, 2,065 people aged 18-24 were claiming Job Seekers Allowance and Universal Credit who were not in work in Gloucestershire, this represents 19.4% of total working age claimants.

PART 7: YOUNG PEOPLE NOT IN EDUCATION, EMPLOYMENT OR TRAINING (NEET) IN GLOUCESTERSHIRE

Data provided by Gloucestershire Youth Support Team on the situation of young people (16-18) in Gloucestershire who are not in education, employment or formal training.

Gloucestershire Youth Support Team is required to report performance on the Academic Year 12 and 13 (16/17 age) against nationally defined criteria for counting the NEET group to the Department for Education (DfE) on a monthly basis. The NEET group includes young people actively seeking education, employment or training as well as those young people who are either not yet ready or who are unable to access these opportunities because of their personal circumstances. The figures quoted below include young people in both of these categories.

(End of) November 2025

Academic Year 12-13 Summary

	NEET	Cohort	%
Cheltenham	81	2523	3.21%
Cotswold	49	1793	2.73%
Forest	55	1789	3.07%
Gloucester	188	3673	5.12%
Stroud	73	2895	2.52%
Tewkesbury	67	2274	2.95%
Total	513	14947	3.43%

16-18 Age Summary

	NEET	Cohort	%
Cheltenham	126	3428	3.68%
Cotswold	75	2488	3.01%
Forest	78	2448	3.19%
Gloucester	291	5018	5.80%
Stroud	101	3916	2.58%
Tewkesbury	87	3040	2.86%
Total	758	20338	3.73%

16-18 Adjust NEET*	3.95%
--------------------	-------

Monthly Change **	67	-10	0.45%
Previous Month	446	14957	2.98%

Monthly Change **	42	-525	0.30%
Previous Month	716	20863	3.43%

The academic year 12-13 group contains a proportion of young people who turn 18 in the academic year but were 17 on the 31st August the previous academic year so are entitled to learning through RPA (raising participation age).

Please note all figures quoted above are subject to change before the submission date to the DfE which usually happens in the second or third week of the month for the previous month.

If you would like to receive any further information on Gloucestershire's NEET strategy, then please contact lynne.speak@gloucestershire.gov.uk.

(*) Adjustment includes a proportion of young people aged 16-18 whose outcomes are not-known to Gloucestershire Youth Support Team.

(**) Change in monthly rate.