



## Sharing WW1 stories using Historypin

Historypin is an online environment for sharing local history that is becoming increasingly popular with communities across the world.

Individuals, groups and communities can share WW1 pictures, videos and audio (as well as the stories that go with them) for free, using Historypin. This guide shows you how.

### Using Historypin to remember Gloucestershire's WW1 heritage

Since the start of the 'Gloucestershire Remembers WW1' project we've been sharing pictures and stories through our profile on Historypin.

In August 2014, in partnership with the Imperial War Museum and the Heritage Lottery Fund, Historypin created the First World War Centenary Hub. This special site brings together material from WW1 projects across the UK.

When we were offered a Gloucestershire project within the Centenary Hub, we jumped at the chance! This means that everyone with a Historypin account and WW1 stories about Gloucestershire can now share them, in one place. Follow the instructions below to find out how.

### Adding a pin to the WW1 project site

First go to the Gloucestershire Remembers WW1 project, in the Centenary Hub: [www.historypin.org/en/explore/first-world-war-centenary/gloucestershire-remembers-ww1/](http://www.historypin.org/en/explore/first-world-war-centenary/gloucestershire-remembers-ww1/)

Scroll down the page until you see the 'add a pin to this project' button, and click it:

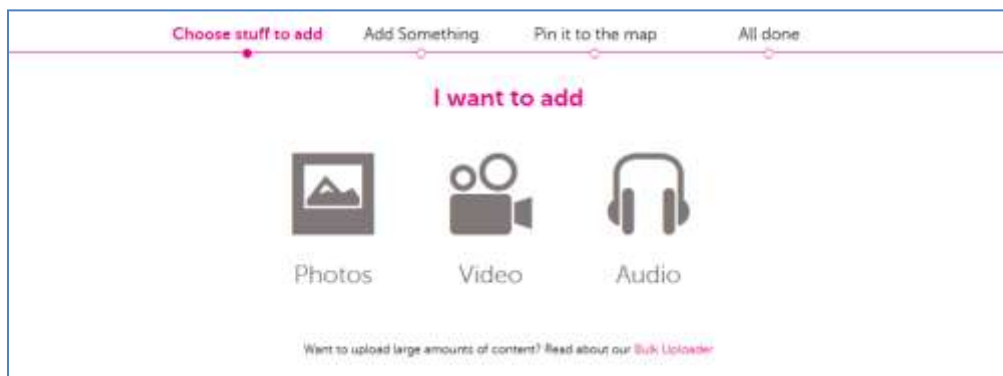


Historypin will ask you to log in. Videos explaining how to create an account can be found on the help pages at [www.historypin.org/how-to/](http://www.historypin.org/how-to/).

Once you're logged in, Historypin will ask you to confirm that you want to add your pin to the Gloucestershire WW1 project. Make sure the 'Gloucestershire Remembers WW1' square is selected (it should have a pink outline) and click 'continue':

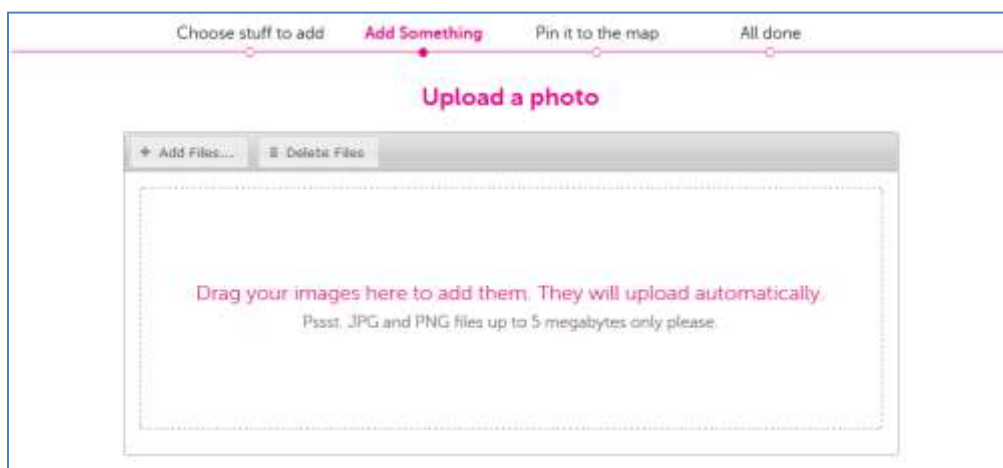


The next screen offers you a choice of formats: photos, video or audio. Select whichever matches the material you want to pin:



If you're planning to add videos or audio, please visit Historypin's help section to learn how to use YouTube to help you upload files: [www.historypin.org/faq/#title8](http://www.historypin.org/faq/#title8).

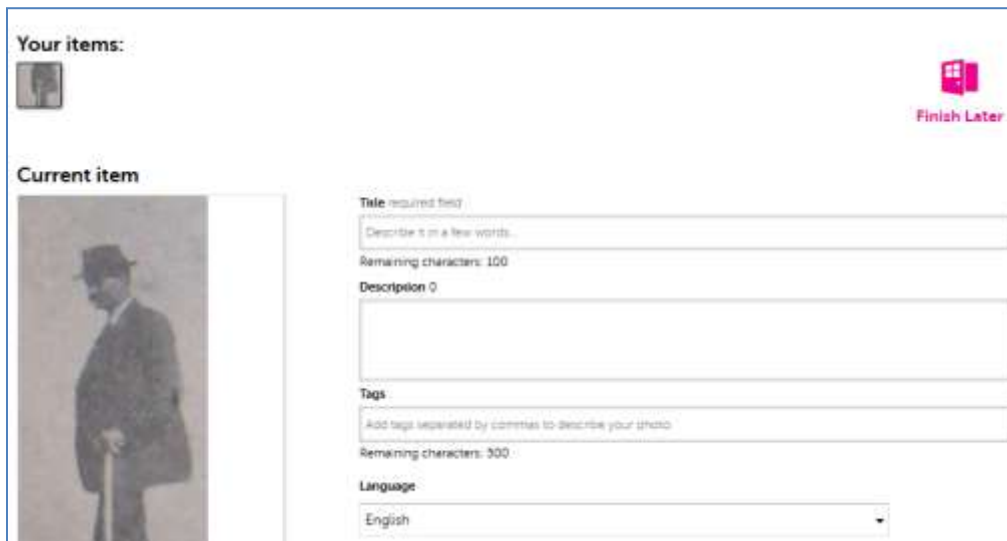
If you're uploading a photo, click the 'add files' button to upload your JPG or PNG file:



The screen will show you the progress of your upload as well as a 'thumbnail' (a miniature version of the image) when it's finished. At this point you can choose to either pin the image to the map now, or save it in your own profile to work on later. If you don't pin straight away, your image won't be published online until you complete the rest of these steps.

## Adding a story to your WW1 picture, video or audio

Once you've added the photo file (or link to your YouTube video/audio) Historypin will ask you for some descriptive information about your file:



**Your items:**

**Current item**

**Title** required field  
Describe it in a few words...

Remaining characters: 100

**Description**

**Tags**  
Add tags separated by commas to describe your photo

Remaining characters: 300

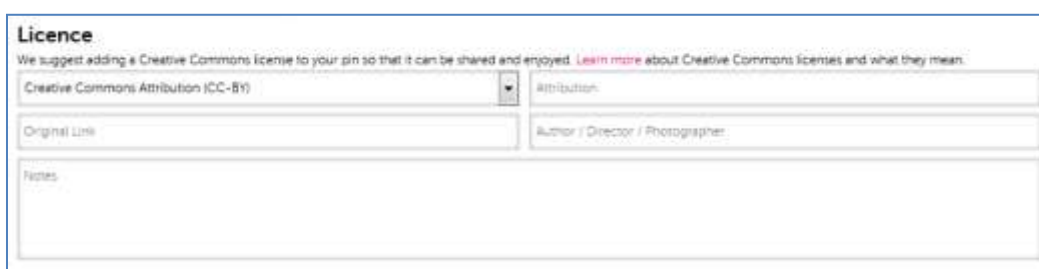
**Language**  
English

**Finish Later**

Using what you know about your material, add in a title, description and a handful of tags that will help people find your photo, video or audio. Follow the instructions on the screen for additional guidance.

Scroll down the screen until you come to the section about licences. Historypin hopes users will let others reuse what's been uploaded, but there are times when we're not allowed to do so. (You can download our guide to copyright and intellectual property through Gloucestershire Archives' website: <http://www.gloucestershire.gov.uk/archives/WW1/recordandshare>.)

Select the type of licence that best applies to your material, and fill in any of the boxes that are relevant:



**Licence**

We suggest adding a Creative Commons license to your pin so that it can be shared and enjoyed. [Learn more](#) about Creative Commons licenses and what they mean.

Creative Commons Attribution (CC-BY)

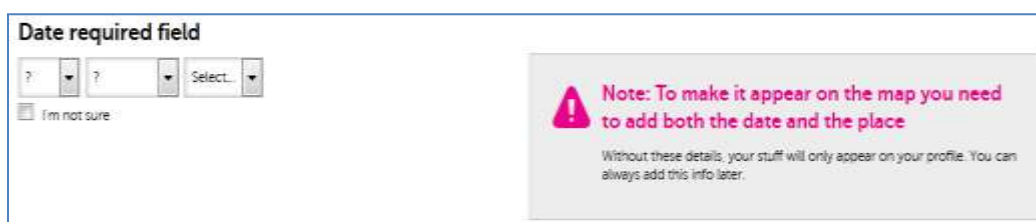
Attribution

Original Link

Author / Director / Photographer

Notes

Further down the page is the date section. If your material has a definite date enter it here. If not, tick the box for "I'm not sure" and enter the year of your material instead:



**Date required field**

?

?

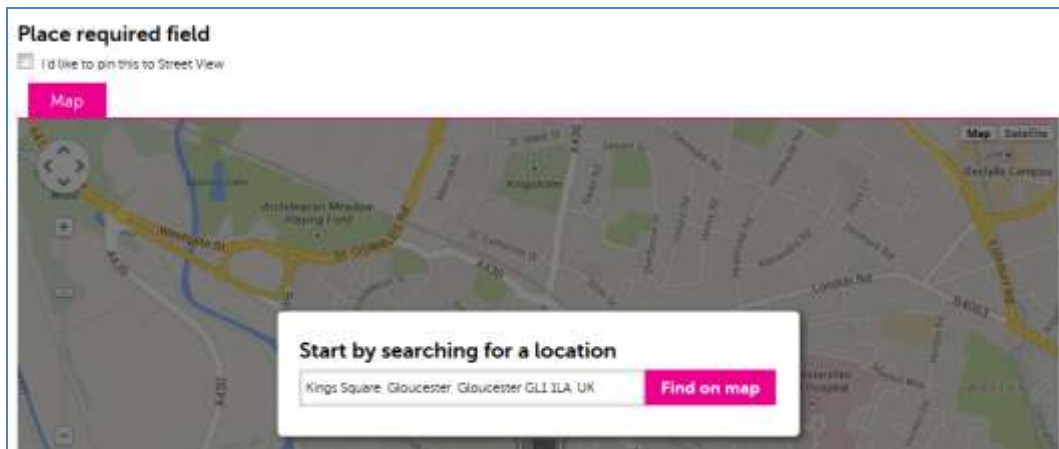
Select...

☐ I'm not sure

**Note:** To make it appear on the map you need to add both the date and the place

Without these details, your stuff will only appear on your profile. You can always add this info later.

Continue to the map section. If you know the address that applies to your material, then type it in the search box and Google Maps will find it for you. If not, consider where in the town, village or area might be most appropriate to place your pin – the town hall maybe, or somewhere central? (Please visit Historypin's help videos to find out more about 'pin to street view': [www.historypin.org/how-to](http://www.historypin.org/how-to).)



Once you've found a suitable location, Historypin will have tried to place your pin for you. If you're happy with its location you can leave it where it is. If you're not happy, drag your pin to another location on the map, or search again.

The final step is to agree the Terms and Conditions and the Privacy policy. Please read both documents very carefully and only continue if you agree with them. If you agree, then tick the box and click the 'Save and Continue' button:



## What next?

Congratulations! Your WW1 item is now pinned to both your profile *and* to the Gloucestershire WW1 site (which means anyone looking at the First World War Centenary Hub can also see it).

Now you've added your content you can decide what else you want to do with it. You could add it to a collection of pins about a particular topic, for example, or include it as part of a virtual tour of your town or village.

Historypin's website has lots of ideas and advice:

- Find out more about collections and tours at [www.historypin.org/curated/](http://www.historypin.org/curated/)
- More information about using Historypin for community and school projects can be found here: [www.historypin.org/community/localprojects/](http://www.historypin.org/community/localprojects/)
- Their list of frequently asked questions is also really useful: [www.historypin.org/faq/](http://www.historypin.org/faq/).

Remember that you can pin anything to Historypin, but these instructions only cover WW1 material relating to Gloucestershire. Please visit [www.historypin.org/how-to](http://www.historypin.org/how-to) to learn how to share stories about other subjects or places.