

Unemployment Bulletin

Issue 98 September 2016

Contents

Part 1: Summary	1
A summary of unemployment data at district, County, regional and national level	
Part 2: County	3
Unemployment figures for the County compared to the South West and the rest of the UK	
Part 3: Districts	4
A comparative break down of unemployment figures by district	
Part 4: Wards	
Further breakdown of unemployment figures by ward:	
Cheltenham	6
Cotswolds	8
Forest of Dean	10
Gloucester	12
Stroud	14
Tewkesbury	16
Part 5: Map	18
Distribution of claimant rate across Gloucestershire	
Part 6: Youth Unemployment	20
Unemployment data for the 18-24 year old age group	
Part 7: Young People	22
Data about Young People Not in Education, Employment or Training (NEET)	

The Claimant Count is a measure of the number of people who are unemployed and claiming benefits. From 1996 until the recent introduction of Universal Credit, this was based on the number of people claiming Jobseeker's Allowance. However, since its introduction some unemployment benefit claimants will be claiming Universal Credit instead.

To reflect this change, the Claimant Count has been expanded to include people claiming Jobseeker's Allowance plus those who claim Universal Credit and who are out of work. For more information about Universal Credit please see the [ONS website](http://www.ons.gov.uk).

INTRODUCTION

The Unemployment Bulletin provides a monthly update on unemployment data for Gloucestershire, the South West region and the United Kingdom. It is produced by the Strategic Needs Analysis Team in the County Council's Strategy and Challenge function. The data is sourced from the Office for National Statistics via Nomis (www.nomis.co.uk).

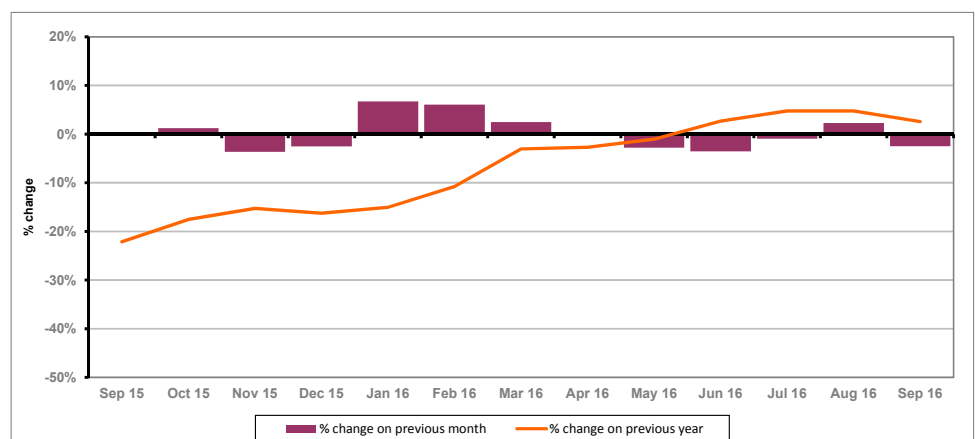
PART 1: SUMMARY

The claimant rate in Gloucestershire was 1.1% in September 2016. This remained the same as the August 2016 figure. The South West and UK rates decreased to 1.1% and 1.8% respectively. Gloucestershire's rate was the same as the South West average of 1.1%, and 0.7% lower than the UK average of 1.8%.

The claimant count in Gloucestershire in September 2016 decreased by 105 people. The amount of people claiming in September 2016 was 2.5% lower than the number in August 2016. This compares to a 1.1% decrease in the South West and a 1.3% decrease for the UK.

The year on year claimant count in Gloucestershire has decreased since last month. The count was 2.6% higher in September 2016 than at the same point in the previous year as shown in the graph below.

Gloucestershire claimants - Month on Month and Year on Year change: September 2015 to September 2016



Source: ONS Crown Copyright Reserved

Produced by:

Strategic Needs Analysis Team
Strategy and Challenge
Gloucestershire County Council
October 2016

DISTRICTS AT A GLANCE

At a glance unemployment information grouped by district. Includes:

Claim count: Total number of people claiming Job Seekers Allowance and Universal Credit who are not in work in September 2016

Compared to last month: How much larger/smaller September's claimant count is compared to August expressed as a %

Claimant rate: The % of working age population claiming Job Seekers Allowance and Universal Credit who are not in work in September 2016

Highest claiming ward: The ward with the highest claim count in that district and the rate

CHELTEMHAM BOROUGH

Claim count:	790
Compared to last month:	-6.0%
Claimant rate:	1.0%
Highest claiming ward	Oakley (2.5%)

GLOUCESTER CITY

Claim count:	1,395
Compared to last month:	0.4%
Claimant rate:	1.7%
Highest claiming wards	Westgate (3.8%)

COTSWOLD DISTRICT

Claim count:	315
Compared to last month:	-3.1%
Claimant rate:	0.6%
Highest claiming ward	Watermoor (1.7%)

STROUD DISTRICT

Claim count:	535
Compared to last month:	-1.8%
Claimant rate:	0.8%
Highest claiming wards	Slade (2.1%)

FOREST OF DEAN

Claim count:	615
Compared to last month:	-2.4%
Claimant rate:	1.2%
Highest claiming ward	Cinderford West, and Lydney East (2.2%)

TEWKESBURY BOROUGH

Claim count:	520
Compared to last month:	-4.6%
Claimant rate:	1.0%
Highest claiming ward	Tewkesbury Prior's Park (3.0%)

PART 2: UK, SW AND GLOUCESTERSHIRE INDICATORS

The unemployment situation in Gloucestershire compared to the South West and the UK.

Claimant Rate

Figure 1: Claimant Rate for Gloucestershire, the South West and UK over the past year

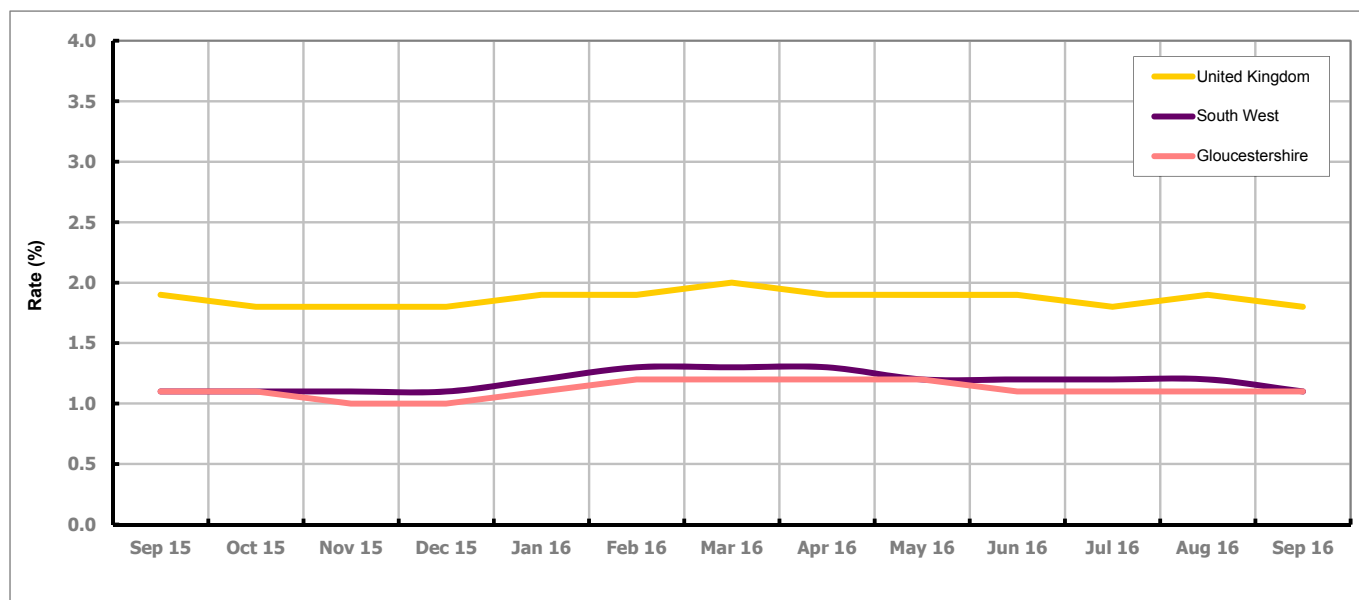


Figure 1 shows the claimant rate for Gloucestershire at 1.1% in September 2016. The Gloucestershire rate has been lower than the South West average since November 2015, with the exception of May and September 2016 when it was the same. It has been persistently lower by approximately 0.8% against the UK average.

Claimant Count

Table 1: Analysis of UK, South West and Gloucestershire Claimant Counts

Area	Claimant Count in September 2016	% change on August 2016	Average % change over the last six months	Consecutive months decreasing
UK	754,085	-1.3%	-0.8%	0
South West	38,060	-1.1%	-1.5%	5
Gloucestershire	4,170	-2.5%	-1.3%	0

Table 1 shows that in September 2016, the number of claimants in Gloucestershire was 2.5% lower than the number in August 2016.

The average change in claimants in Gloucestershire for the six months to September 2016 was -1.3%.

PART 3: LOCAL AUTHORITY DISTRICT ANALYSIS

Claimant Rate and Claimant Count

Figure 2: Claimant Rate (%) across Gloucestershire - September 2016

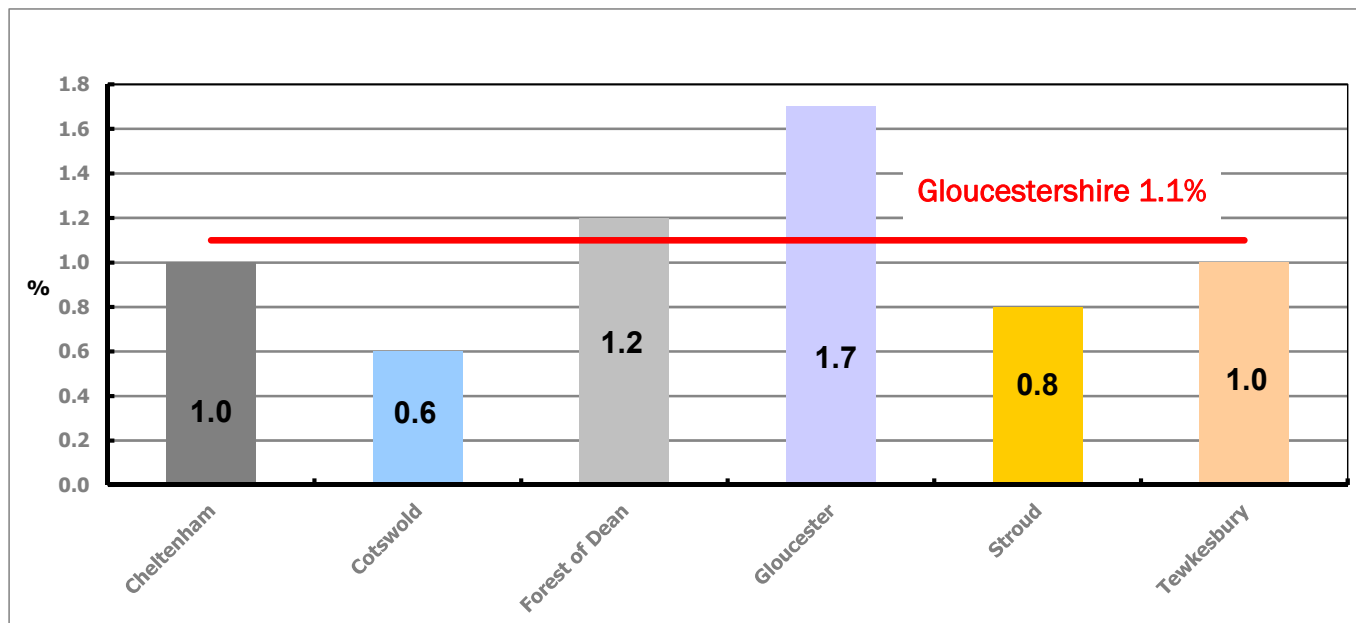


Figure 2 shows the claimant rate for September 2016 in Gloucestershire. Between August and September 2016, the rate decreased in Cheltenham and Tewkesbury. All other districts stayed the same.

Figure 3: Total claimants over the past year across Gloucestershire Districts

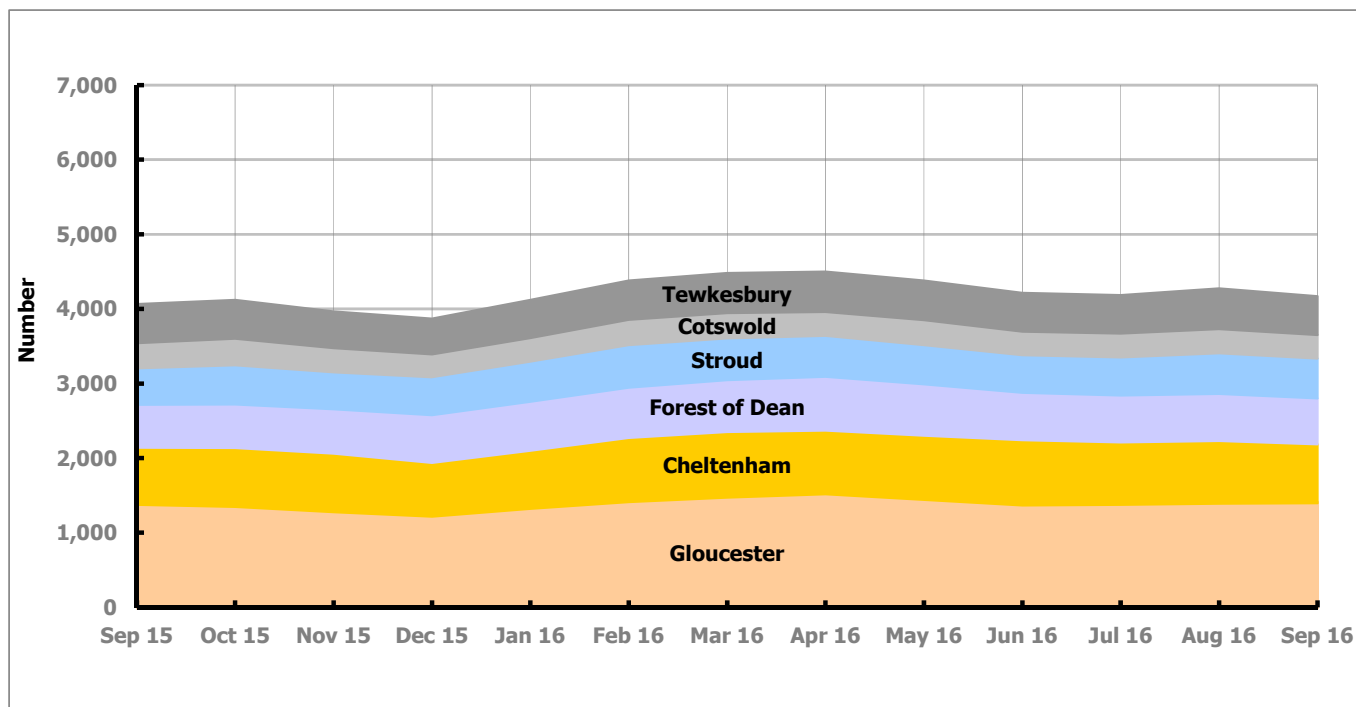


Figure 3 shows the overall claimant count by district over the past year. The number of claimants has increased slightly over the last year. However, the last six months have seen a general decline, with the exception of April and August.

Table 2: Analysis of Gloucestershire and District Claimant Counts

Total	Sep 16 Number	Sep 16 Rate	Aug 16 Number	Aug 16 Rate	Monthly change	% monthly change	Monthly change of rate
Gloucestershire	4,170	1.1	4,275	1.1	-105	-2.5%	0.0
Cheltenham	790	1.0	840	1.1	-50	-6.0%	-0.1
Cotswold	315	0.6	325	0.6	-10	-3.1%	0.0
Forest of Dean	615	1.2	630	1.2	-15	-2.4%	0.0
Gloucester	1,395	1.7	1,390	1.7	5	0.4%	0.0
Stroud	535	0.8	545	0.8	-10	-1.8%	0.0
Tewkesbury	520	1.0	545	1.1	-25	-4.6%	-0.1

Table 2 shows the change in the claimant count in September 2016 compared to August 2016. Gloucester saw an increase in the number of claimants, while all other districts saw a decrease.

Table 3: Analysis of Male Gloucestershire and District Claimant Counts

Male	Sep 16 Number	Sep 16 Rate	Aug 16 Number	Aug 16 Rate	Monthly change	% monthly change	Monthly change of rate
Gloucestershire	2,635	1.4	2,690	1.4	-55	-2.0%	0.0
Cheltenham	515	1.4	540	1.4	-25	-4.6%	0.0
Cotswold	200	0.8	200	0.8	0	0.0%	0.0
Forest of Dean	395	1.6	405	1.6	-10	-2.5%	0.0
Gloucester	895	2.2	895	2.2	0	0.0%	0.0
Stroud	325	0.9	335	1.0	-10	-3.0%	-0.1
Tewkesbury	305	1.2	320	1.2	-15	-4.7%	0.0

Table 3 shows the change in the male claimant count in September 2016 compared to August 2016. The number of male claimants in Cotswold and Gloucester stayed the same as last month, while all other districts saw a decrease.

Table 4: Analysis of Female Gloucestershire and District Claimant Counts

Female	Sep 16 Number	Sep 16 Rate	Aug 16 Number	Aug 16 Rate	Monthly change	% monthly change	Monthly change of rate
Gloucestershire	1,535	0.8	1,580	0.8	-45	-2.8%	0.0
Cheltenham	275	0.7	300	0.8	-25	-8.3%	-0.1
Cotswold	115	0.5	125	0.5	-10	-8.0%	0.0
Forest of Dean	220	0.9	230	0.9	-10	-4.3%	0.0
Gloucester	500	1.2	495	1.2	5	1.0%	0.0
Stroud	210	0.6	210	0.6	0	0.0%	0.0
Tewkesbury	215	0.8	225	0.9	-10	-4.4%	-0.1

Table 4 shows the change in the female claimant count in September 2016 compared to August 2016. Gloucester saw an increase in the number of female claimants, while Stroud stayed the same. All other districts saw a decrease.

PART 4: LOCAL AUTHORITY DISTRICT AND WARD ANALYSIS

This section covers the six districts and a comparison of their constituent wards.

4.1 Cheltenham Borough

Claimant Rate and Claimant Count

Figure 4: Cheltenham Borough claimant rate over the last year

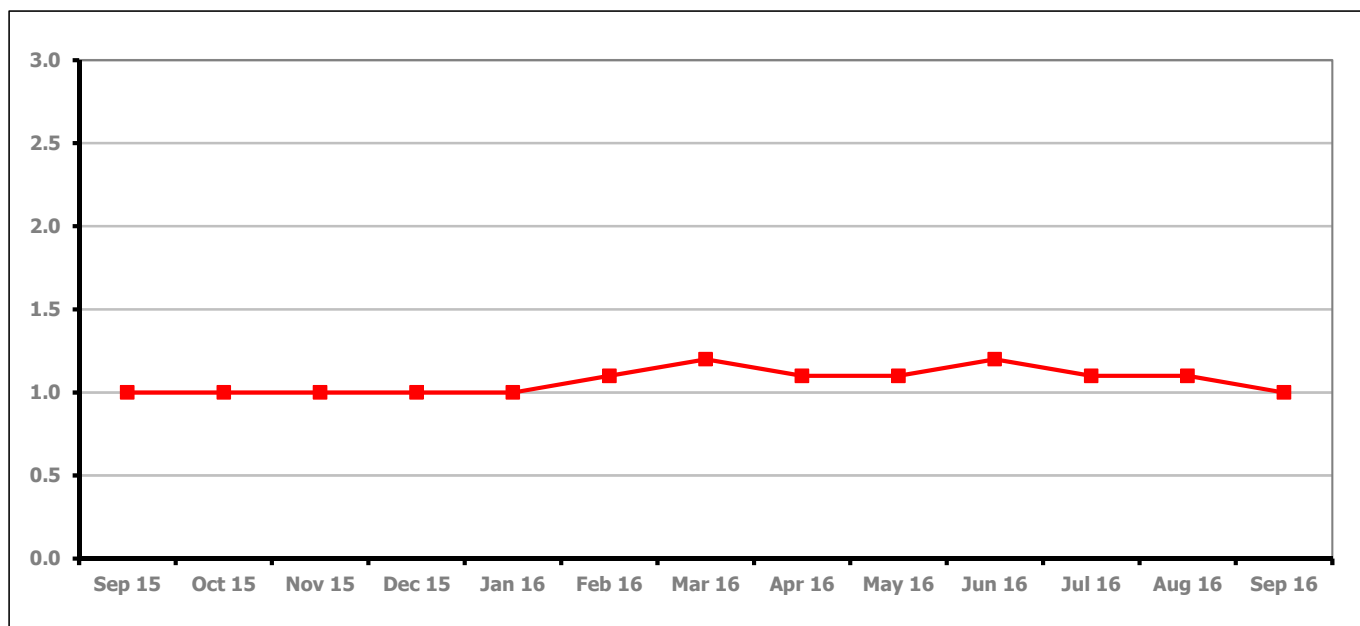


Figure 4 shows the claimant rate in Cheltenham decreased in September 2016 to 1.0%.

Figure 5: Cheltenham Borough claimants - Month on Month and Year on Year change

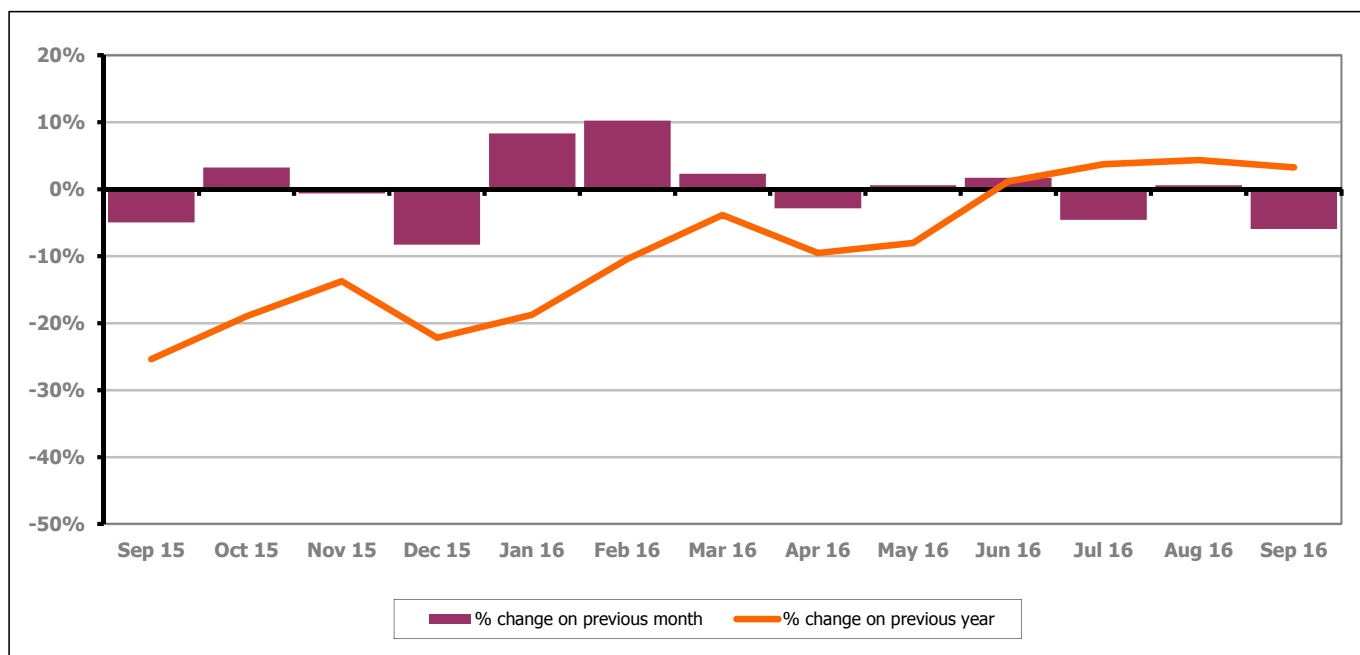


Figure 5 shows the claimant count decreased by 6.0% since last month. The percentage change on the previous year has decreased between August and September 2016 to 3.3%.

PART 4: LOCAL AUTHORITY DISTRICT AND WARD ANALYSIS

4.1 Cheltenham Borough continued...

Figure 6: Claimant rates across Cheltenham Borough wards - September 2016

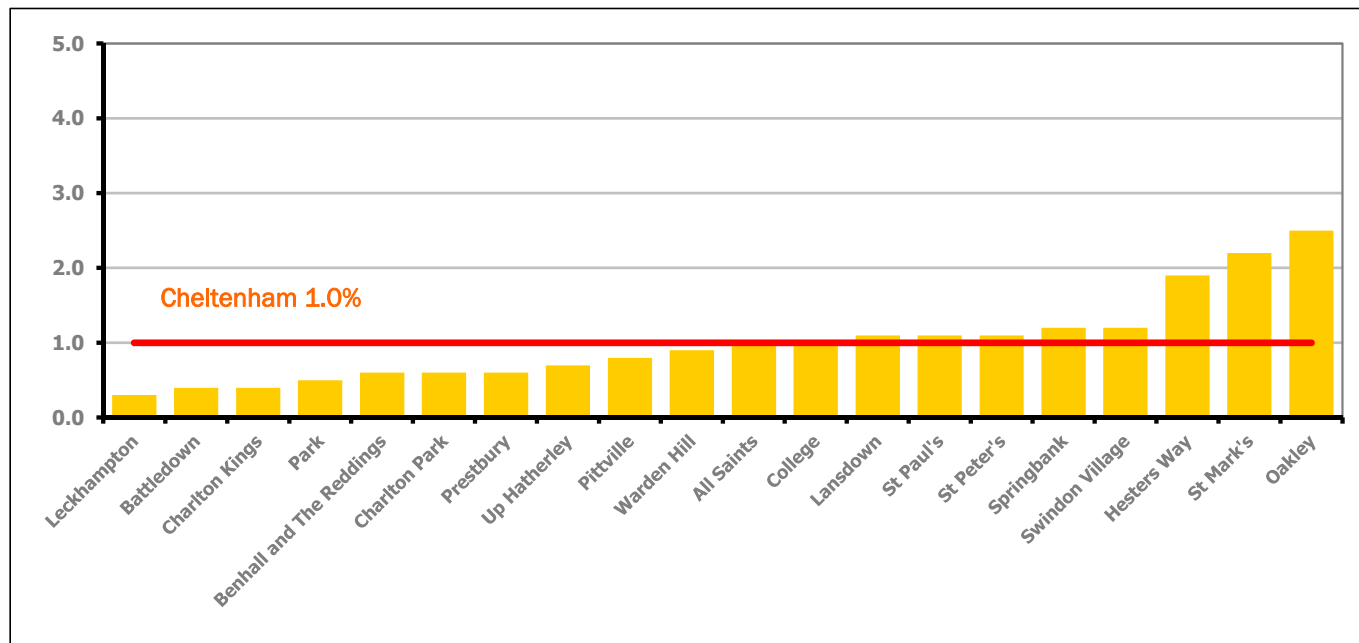


Figure 6 shows the claimant rates for Cheltenham Borough wards. The red line represents the average claimant rate across the Borough of 1.0%. Eight wards lie above the average.

Table 5: Analysis of Claimant Count at Cheltenham Borough ward level - September 2016

District	Ward	Rate	Rank*
Cheltenham	Leckhampton	0.3	5
Cheltenham	Battledown	0.4	18
Cheltenham	Charlton Kings	0.4	18
Cheltenham	Park	0.5	29
Cheltenham	Benhall and The Reddings	0.6	39
Cheltenham	Charlton Park	0.6	39
Cheltenham	Prestbury	0.6	39
Cheltenham	Up Hatherley	0.7	59
Cheltenham	Pittville	0.8	64
Cheltenham	Warden Hill	0.9	76
Cheltenham	All Saints	1.0	89
Cheltenham	College	1.0	89
Cheltenham	Lansdown	1.1	102
Cheltenham	St Paul's	1.1	102
Cheltenham	St Peter's	1.1	102
Cheltenham	Springbank	1.2	110
Cheltenham	Swindon Village	1.2	110
Cheltenham	Hesters Way	1.9	133
Cheltenham	St Mark's	2.2	136
Cheltenham	Oakley	2.5	141

lowest 10% of county
 first quartile of county
 second quartile of county
 third quartile of county
 fourth quartile of county
 highest 10% of county

* 1 = "best" and 142 = "worst"

Table 5 shows overall claimant rates for Cheltenham Borough wards and their position relative to all wards in Gloucestershire.

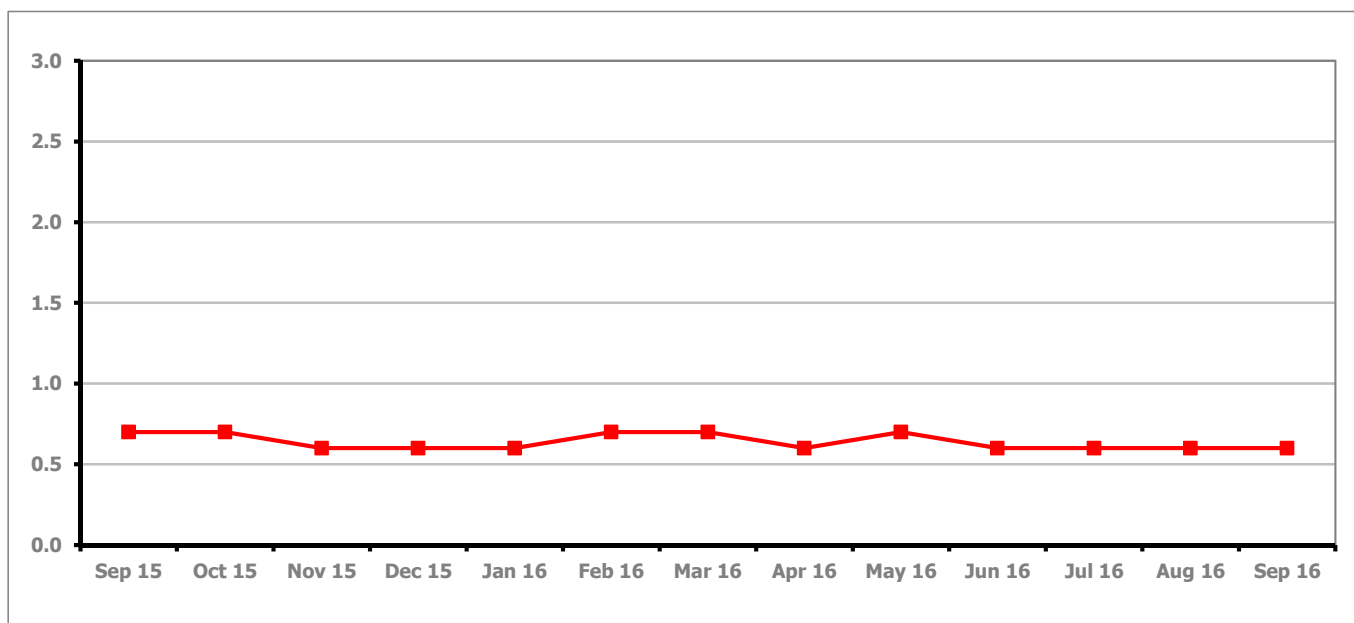
PART 4: LOCAL AUTHORITY DISTRICT AND WARD ANALYSIS**4.2 Cotswold District****Claimant Rate and Claimant Count***Figure 7: Cotswold District claimant rate over the last year*

Figure 7 shows the claimant rate in Cotswold District stayed the same as last month at 0.6%.

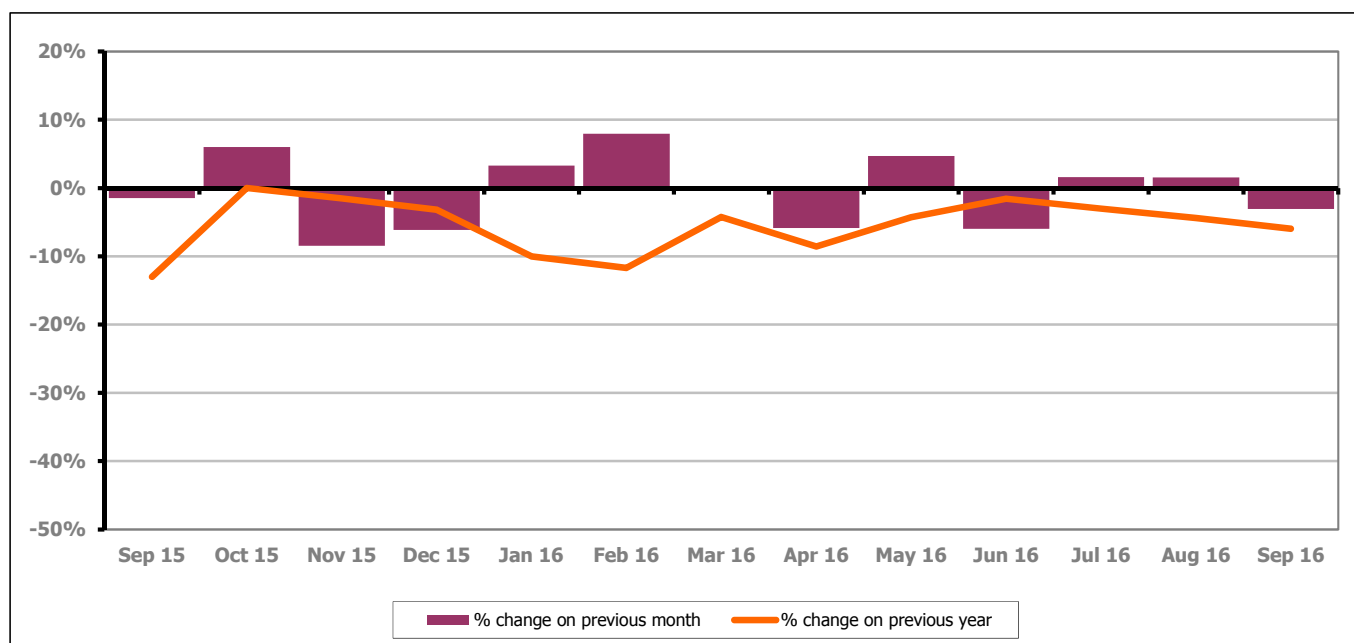
Figure 8: Cotswold District claimants - Month on Month and Year on Year change

Figure 8 shows the claimant count decreased by 3.1% since last month. The change on the previous year has decreased between August and September 2016 to -6.0%.

PART 4: LOCAL AUTHORITY DISTRICT AND WARD ANALYSIS

4.2 Cotswold District continued...

Figure 9: Claimant rates across Cotswold District wards - September 2016

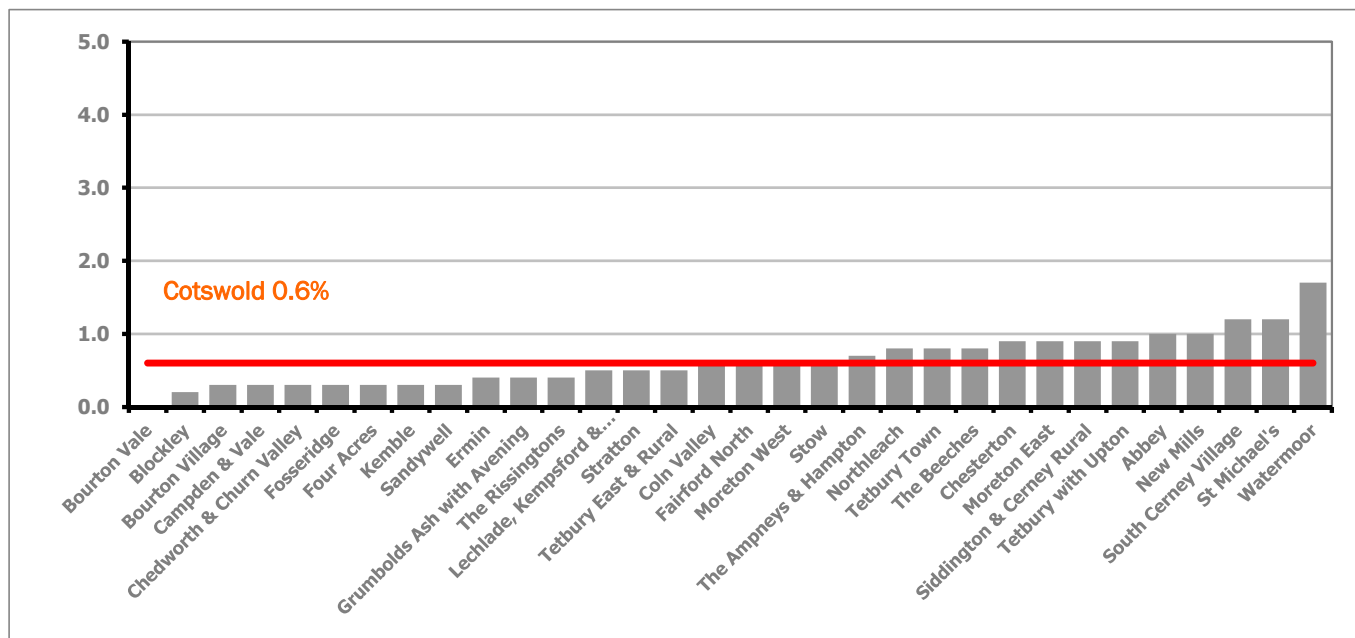
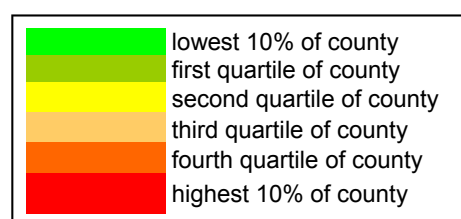


Figure 9 shows the claimant rates for Cotswold District wards. The red line represents the average claimant rate across the District of 0.6%. Thirteen wards lie above the average.

Table 6: Analysis of Claimant Count at Cotswold District ward level - September 2016

District	Ward	Rate	Rank*
Cotswolds	Bourton Vale	<0.2	1
Cotswolds	Blockley	0.2	4
Cotswolds	Bourton Village	0.3	5
Cotswolds	Campden & Vale	0.3	5
Cotswolds	Chedworth & Churn Valley	0.3	5
Cotswolds	Fosseridge	0.3	5
Cotswolds	Four Acres	0.3	5
Cotswolds	Kemble	0.3	5
Cotswolds	Sandywell	0.3	5
Cotswolds	Ermin	0.4	18
Cotswolds	Grumbolds Ash with Avening	0.4	18
Cotswolds	The Rissingtons	0.4	18
Cotswolds	Lechlade, Kempsford & Fairford South	0.5	29
Cotswolds	Stratton	0.5	29
Cotswolds	Tetbury East & Rural	0.5	29
Cotswolds	Coln Valley	0.6	39
Cotswolds	Fairford North	0.6	39
Cotswolds	Moreton West	0.6	39
Cotswolds	Stow	0.6	39
Cotswolds	The Ampneys & Hampton	0.7	59
Cotswolds	Northleach	0.8	64
Cotswolds	Tetbury Town	0.8	64
Cotswolds	The Beeches	0.8	64
Cotswolds	Chesterton	0.9	76
Cotswolds	Moreton East	0.9	76
Cotswolds	Siddington & Cerney Rural	0.9	76
Cotswolds	Tetbury with Upton	0.9	76
Cotswolds	Abbey	1.0	89
Cotswolds	New Mills	1.0	89
Cotswolds	South Cerney Village	1.2	110
Cotswolds	St Michael's	1.2	110
Cotswolds	Watermoor	1.7	129



* 1 = "best" and 142 = "worst"

Table 6 shows overall claimant rates for Cotswold District wards and their position relative to all wards in Gloucestershire.

PART 4: LOCAL AUTHORITY DISTRICT AND WARD ANALYSIS

4.3 Forest of Dean District

Claimant Rate and Claimant Count

Figure 10: Forest of Dean District claimant rate over the last year

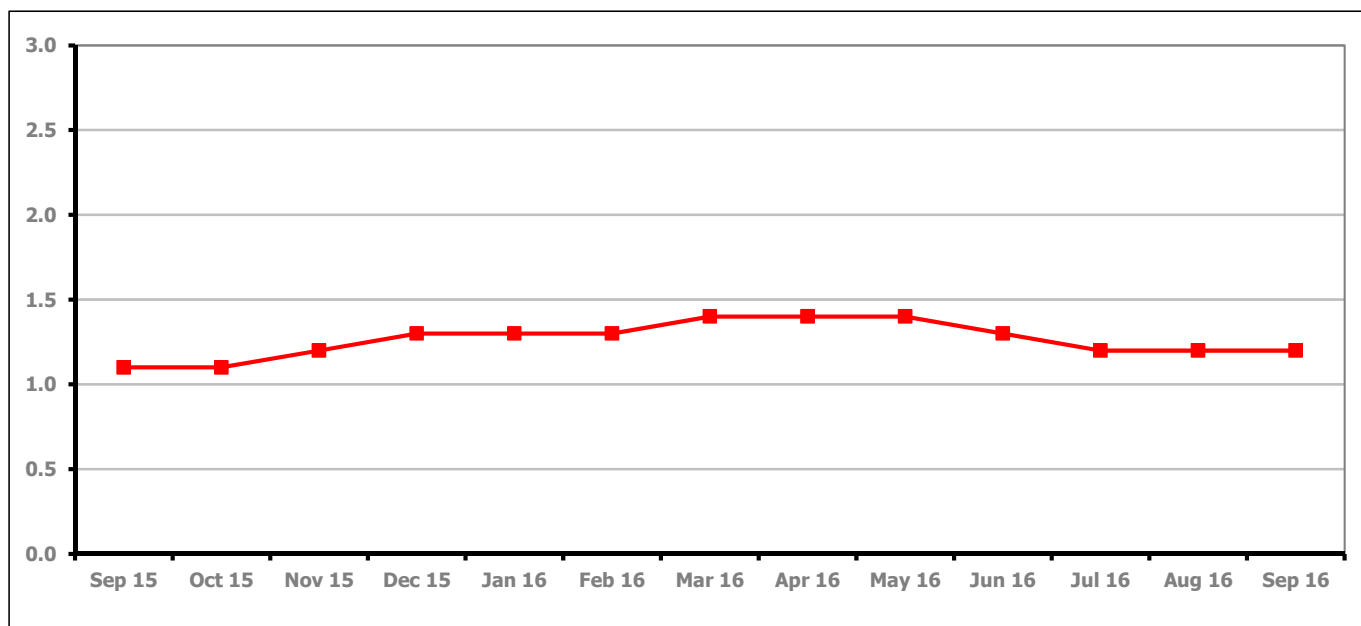


Figure 10 shows the claimant rate in the Forest of Dean stayed the same as last month at 1.2%.

Figure 11: Forest of Dean District claimants - Month on Month and Year on Year change

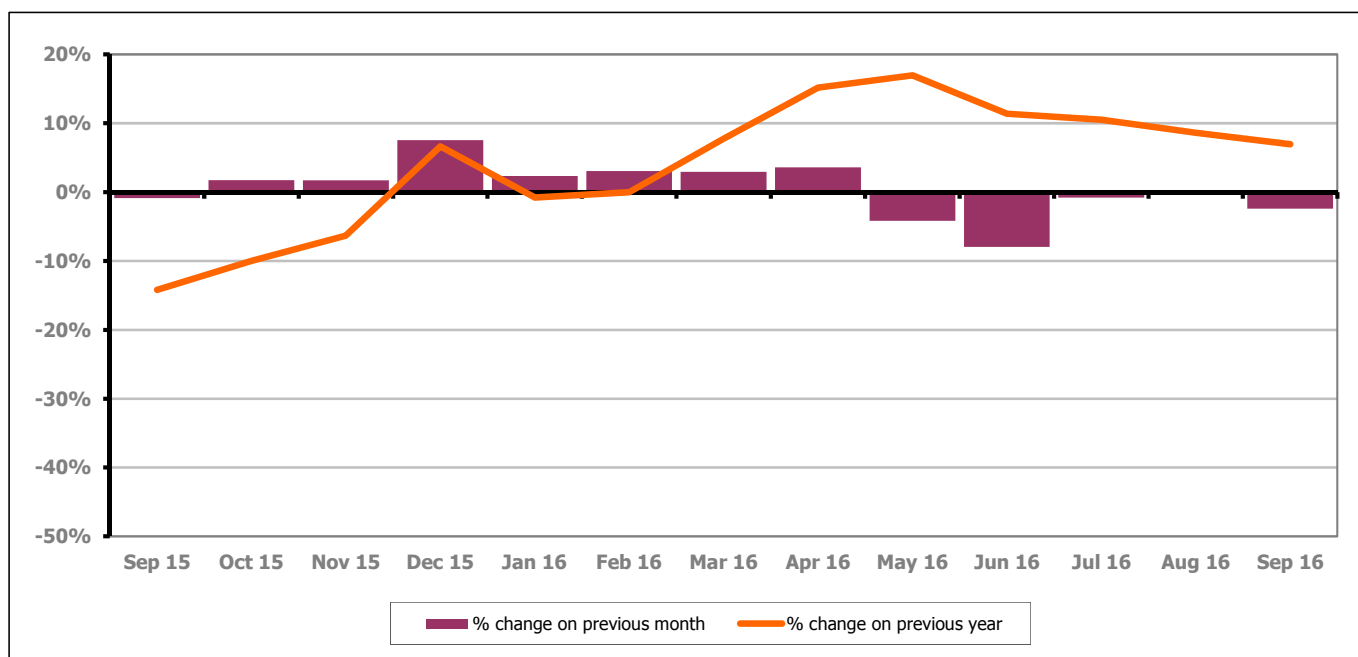


Figure 11 shows the claimant count decreased by 2.4% since last month. The change on the previous year has decreased between August and September 2016 to 7.0%.

PART 4: LOCAL AUTHORITY DISTRICT AND WARD ANALYSIS

4.3 Forest of Dean District continued...

Figure 12: Claimant rates across Forest of Dean District wards - September 2016

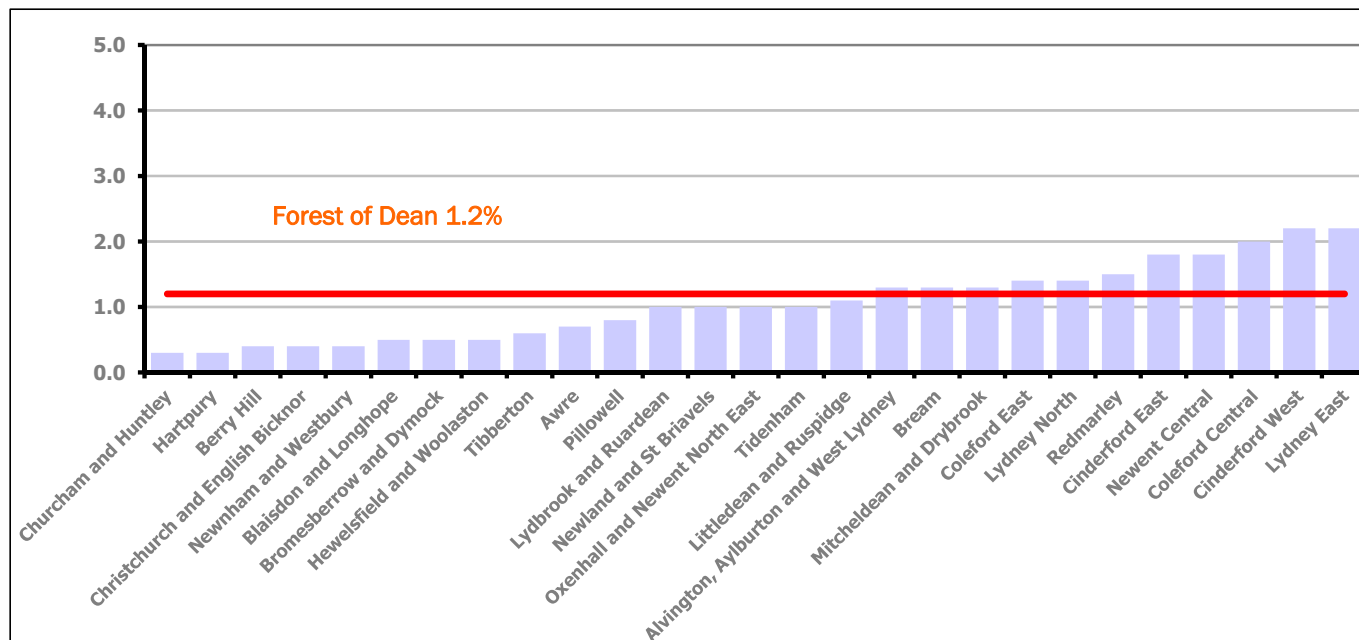


Figure 12 shows the claimant rates for Forest of Dean District wards. The red line represents the average claimant rate across the District of 1.2%. Eleven wards lie above the average.

Table 7: Analysis of Claimant Count at Forest of Dean District ward level - September 2016

District	Ward	Rate	Rank*
Forest	Churcham and Huntley	0.3	5
Forest	Hartpur	0.3	5
Forest	Berry Hill	0.4	18
Forest	Christchurch and English Bicknor	0.4	18
Forest	Newnham and Westbury	0.4	18
Forest	Blaisdon and Longhope	0.5	29
Forest	Bromesberrow and Dymock	0.5	29
Forest	Hewelsfield and Woolaston	0.5	29
Forest	Tibberton	0.6	39
Forest	Awre	0.7	59
Forest	Pillowell	0.8	64
Forest	Lydbrook and Ruardean	1.0	89
Forest	Newland and St Briavels	1.0	89
Forest	Oxenhall and Newent North East	1.0	89
Forest	Tidenham	1.0	89
Forest	Littledean and Ruspidge	1.1	102
Forest	Alvington, Aylburton and West Lydney	1.3	116
Forest	Bream	1.3	116
Forest	Mitcheldean and Drybrook	1.3	116
Forest	Coleford East	1.4	124
Forest	Lydney North	1.4	124
Forest	Redmarley	1.5	126
Forest	Cinderford East	1.8	130
Forest	Newent Central	1.8	130
Forest	Coleford Central	2.0	134
Forest	Cinderford West	2.2	136
Forest	Lydney East	2.2	136

lowest 10% of county
 first quartile of county
 second quartile of county
 third quartile of county
 fourth quartile of county
 highest 10% of county

* 1 = "best" and 142 = "worst"

Table 7 shows overall claimant rates for the Forest of Dean District wards and their position relative to all wards in Gloucestershire.

PART 4: LOCAL AUTHORITY DISTRICT AND WARD ANALYSIS

4.4 Gloucester City

Claimant Rate and Claimant Count

Figure 13: Gloucester City claimant rate over the last year

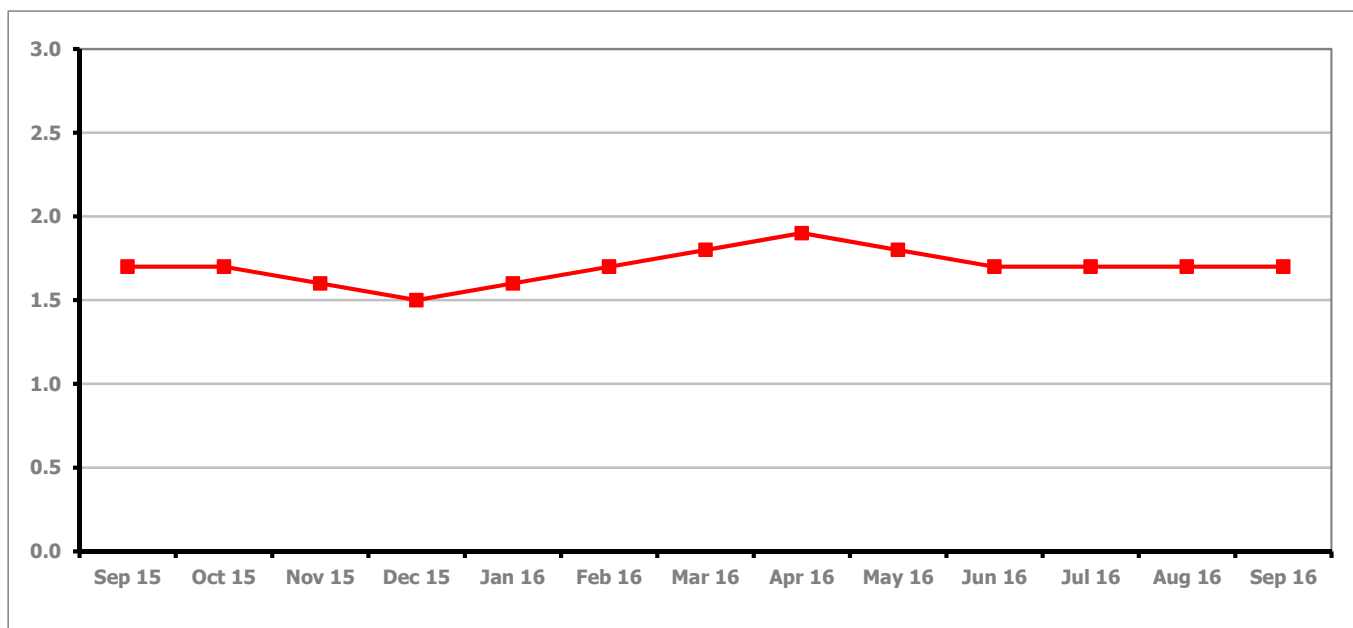


Figure 13 shows the claimant rate for Gloucester City stayed the same as last month at 1.7%.

Figure 14: Gloucester City claimants - Month on Month and Year on Year change

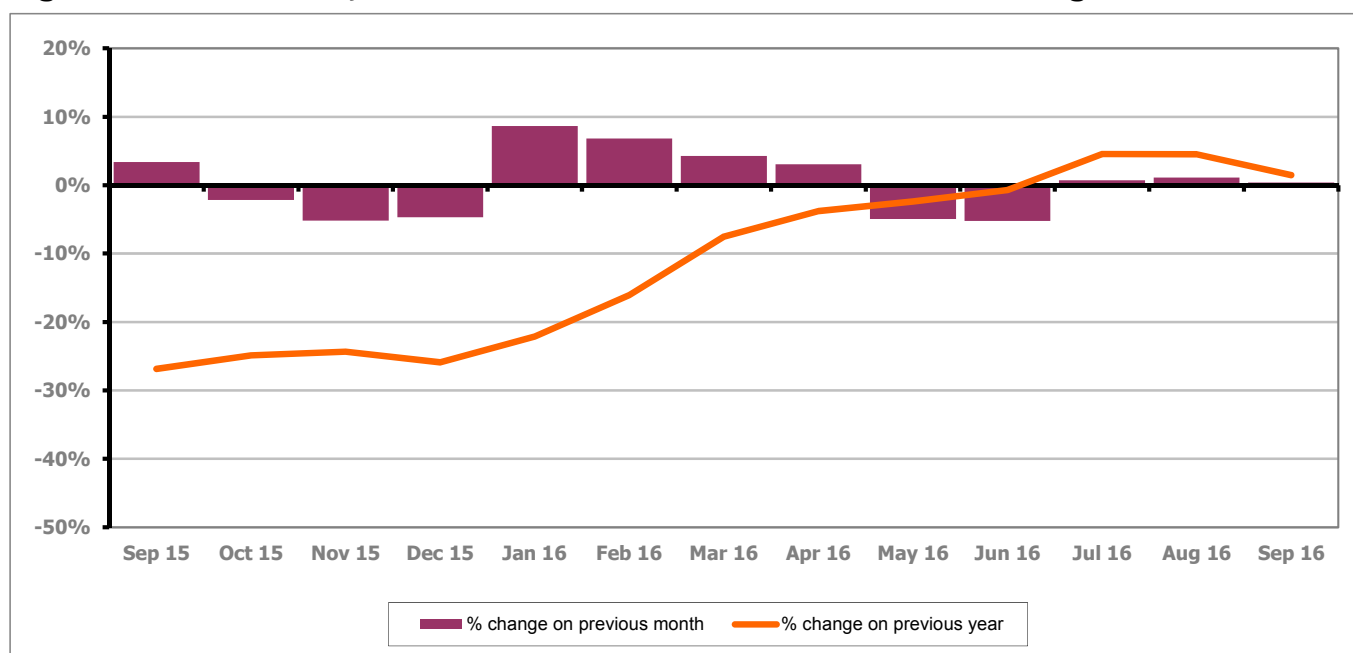


Figure 14 shows the monthly claimant count increased by 0.4% since August 2016. The change on the previous year has decreased between August and September 2016 to 1.5%.

PART 4: LOCAL AUTHORITY DISTRICT AND WARD ANALYSIS

4.4 Gloucester City continued...

Figure 15: Claimant rates across Gloucester City wards - September 2016

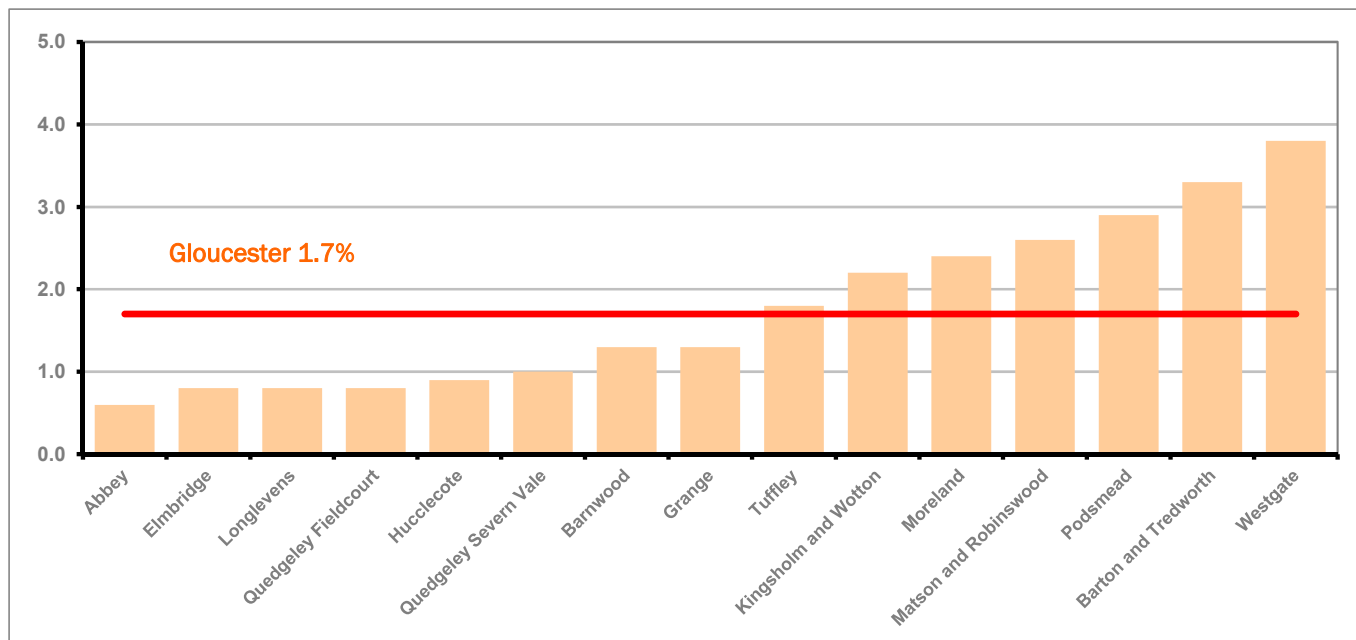
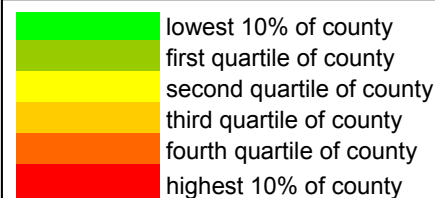


Figure 15 shows the claimant rates for Gloucester City district wards. The red line represents the average claimant rate across the City of 1.7%. Seven wards lie above the average.

Table 8: Analysis of Claimant Count at Gloucester City ward level - September 2016

District	Ward	Rate	Rank*
Gloucester	Abbey	0.6	39
Gloucester	Elmbridge	0.8	64
Gloucester	Longlevens	0.8	64
Gloucester	Quedgeley Fieldcourt	0.8	64
Gloucester	Hucclecote	0.9	76
Gloucester	Quedgeley Severn Vale	1.0	89
Gloucester	Barnwood	1.3	116
Gloucester	Grange	1.3	116
Gloucester	Tuffley	1.8	130
Gloucester	Kingsholm and Wotton	2.2	136
Gloucester	Moreland	2.4	140
Gloucester	Matson and Robinswood	2.6	142
Gloucester	Podsmead	2.9	143
Gloucester	Barton and Tredworth	3.3	145
Gloucester	Westgate	3.8	146



* 1 = "best" and 142 = "worst"

Table 8 shows overall claimant rates for Gloucester City wards and their position relative to all wards in Gloucestershire.

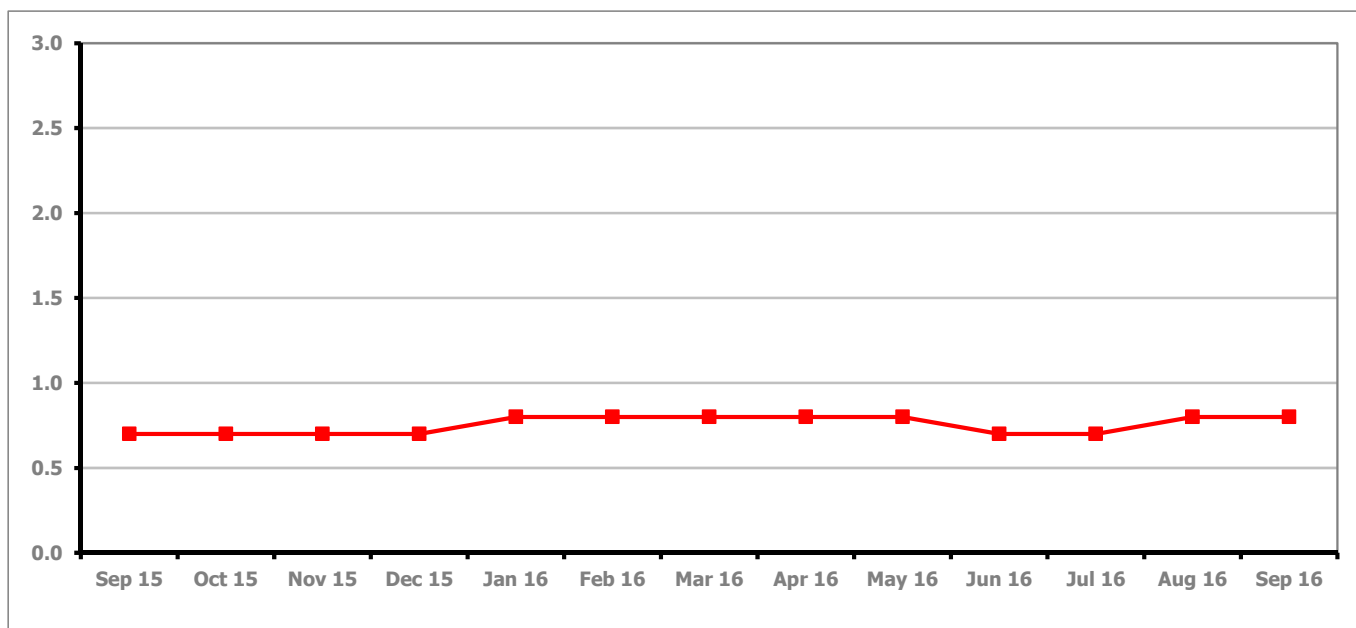
PART 4: LOCAL AUTHORITY DISTRICT AND WARD ANALYSIS**4.5 Stroud District****Claimant Rate and Claimant Count***Figure 16: Stroud District claimant rate over the last year*

Figure 16 shows the claimant rate for Stroud stayed the same as last month at 0.8%.

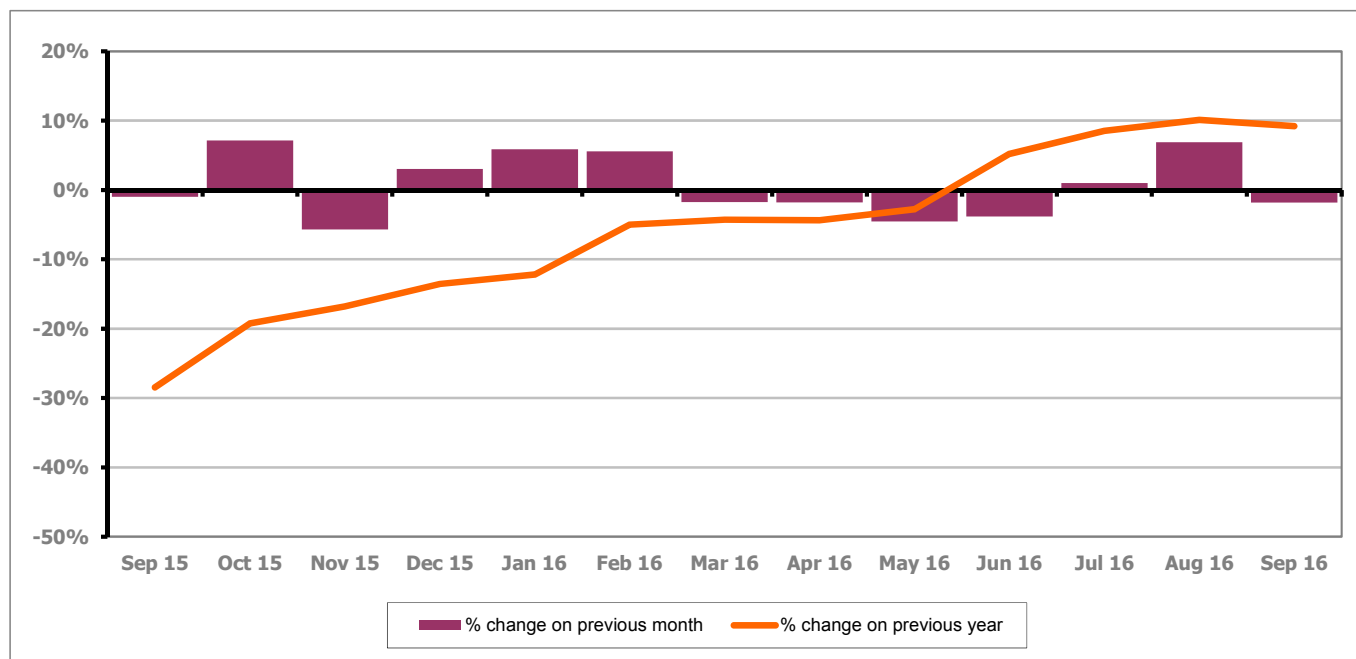
Figure 17: Stroud District claimants - Month on Month and Year on Year change

Figure 17 shows the monthly claimant count decreased by 1.8% since August 2016. The change on the previous year has decreased between August and September 2016 to 9.2%.

PART 4: LOCAL AUTHORITY AND DISTRICT ANALYSIS

4.5 Stroud District continued...

Figure 18: Claimant rates across Stroud District wards - September 2016

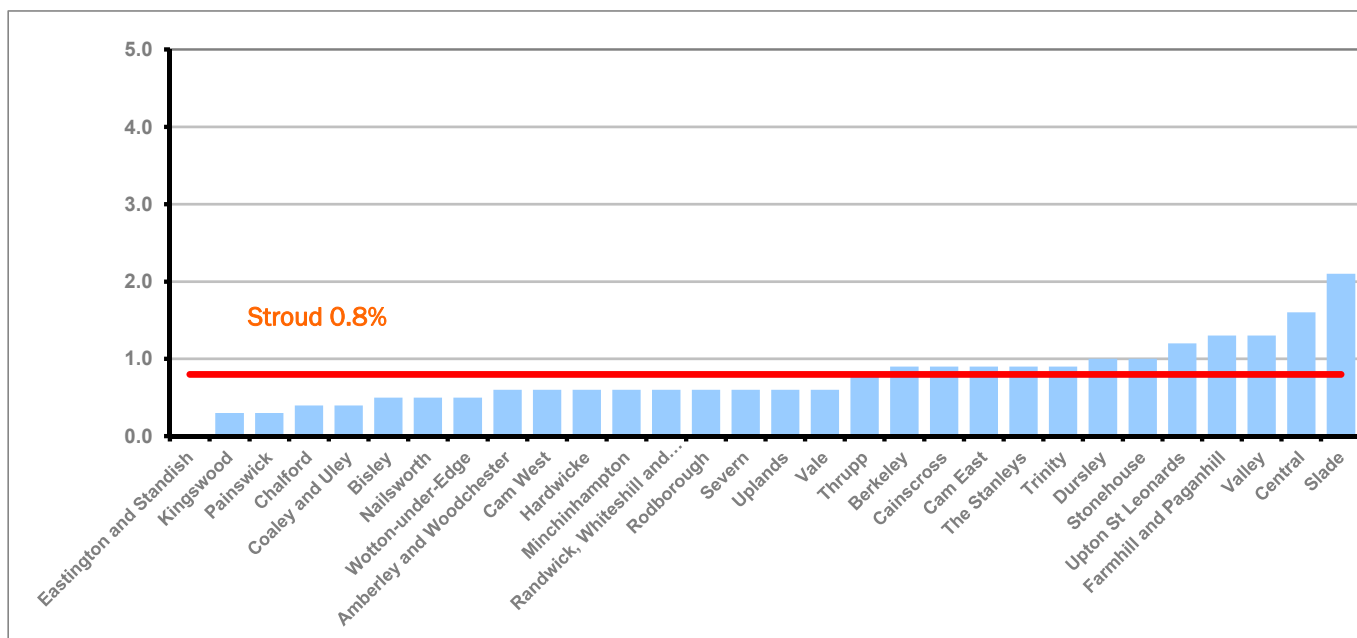
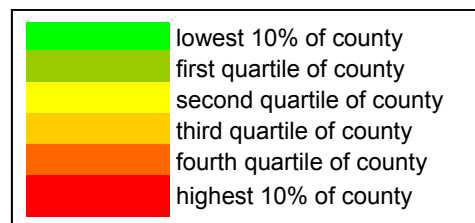


Figure 18 shows the claimant rates in Stroud District wards. The red line represents the average claimant rate across the District of 0.8%. Twelve wards are above the average.

Table 9: Analysis of Claimant Count at Stroud District ward level - September 2016

District	Ward	Rate	Rank*
Stroud	Eastington and Standish	<0.3	1
Stroud	Kingswood	0.3	5
Stroud	Painswick	0.3	5
Stroud	Chalford	0.4	18
Stroud	Coaley and Uley	0.4	18
Stroud	Bisley	0.5	29
Stroud	Nailsworth	0.5	29
Stroud	Wotton-under-Edge	0.5	29
Stroud	Amberley and Woodchester	0.6	39
Stroud	Cam West	0.6	39
Stroud	Hardwicke	0.6	39
Stroud	Minchinhampton	0.6	39
Stroud	Randwick, Whiteshill and Ruscombe	0.6	39
Stroud	Rodborough	0.6	39
Stroud	Severn	0.6	39
Stroud	Uplands	0.6	39
Stroud	Vale	0.6	39
Stroud	Thrupp	0.8	64
Stroud	Berkeley	0.9	76
Stroud	Cainscross	0.9	76
Stroud	Cam East	0.9	76
Stroud	The Stanleys	0.9	76
Stroud	Trinity	0.9	76
Stroud	Dursley	1.0	89
Stroud	Stonehouse	1.0	89
Stroud	Upton St Leonards	1.2	110
Stroud	Farnhill and Paganhill	1.3	116
Stroud	Valley	1.3	116
Stroud	Central	1.6	128
Stroud	Slade	2.1	135



* 1 = "best" and 142 = "worst"

Table 9 shows overall claimant rates for Stroud District wards and their position relative to all wards in Gloucestershire.

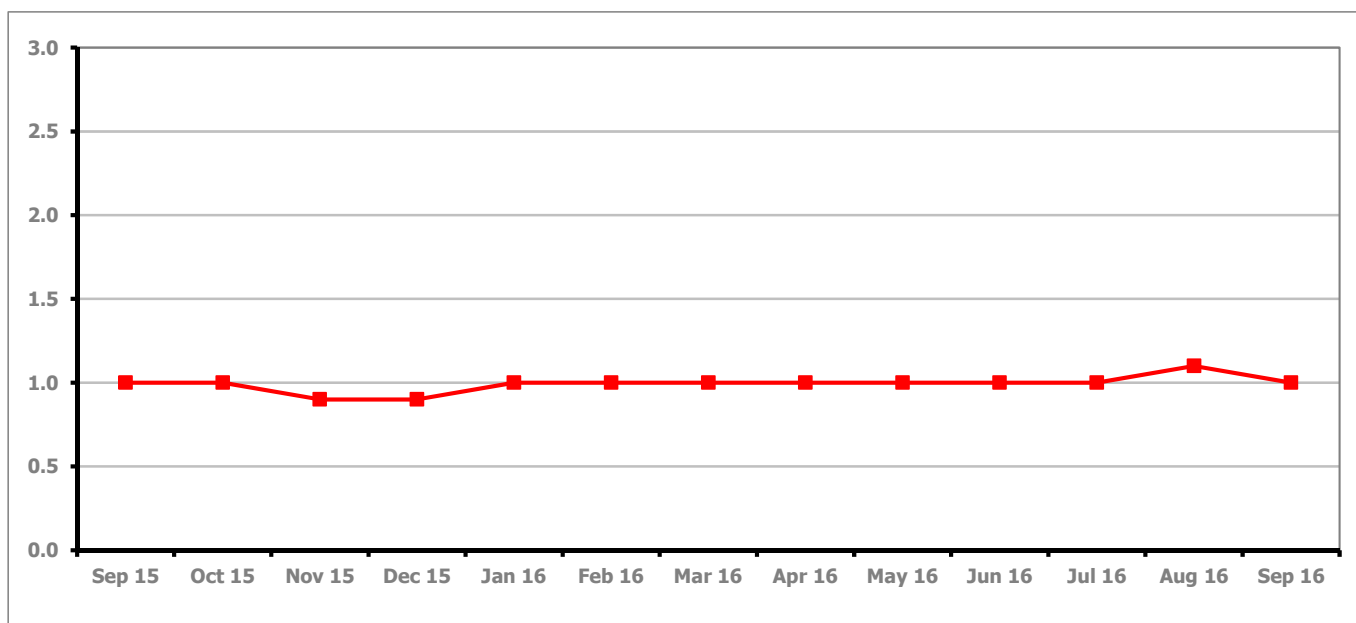
PART 4: LOCAL AUTHORITY DISTRICT AND WARD ANALYSIS**4.6 Tewkesbury District****Claimant Rate and Claimant Count***Figure 19: Tewkesbury District claimant rate over the last year*

Figure 19 shows the claimant rate for Tewkesbury District decreased in September 2016 to 1.0%.

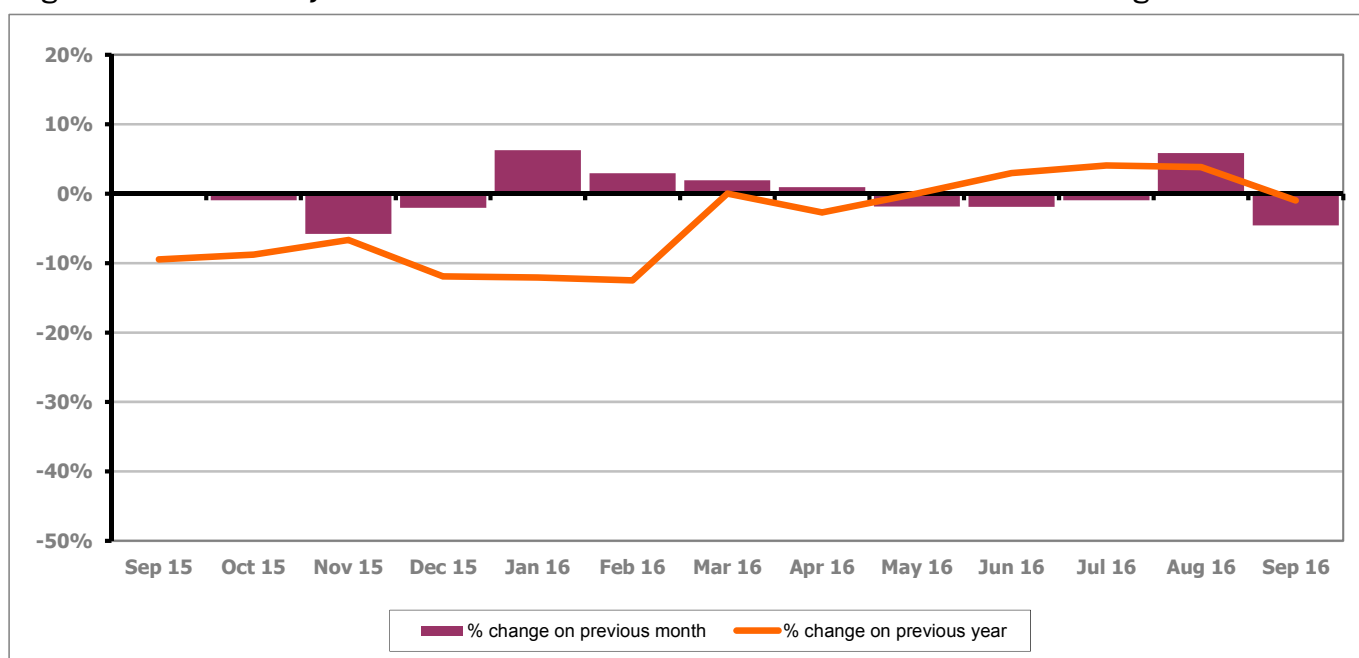
Figure 20: Tewkesbury District claimants - Month on Month and Year on Year change

Figure 20 shows that the monthly claimant count decreased by 4.6% since last month. The change on the previous year has decreased between August and September 2016 to -1.0%.

PART 4: LOCAL AUTHORITY AND DISTRICT ANALYSIS

4.6 Tewkesbury District continued...

Figure 21: Claimant rates across Tewkesbury District wards - September 2016

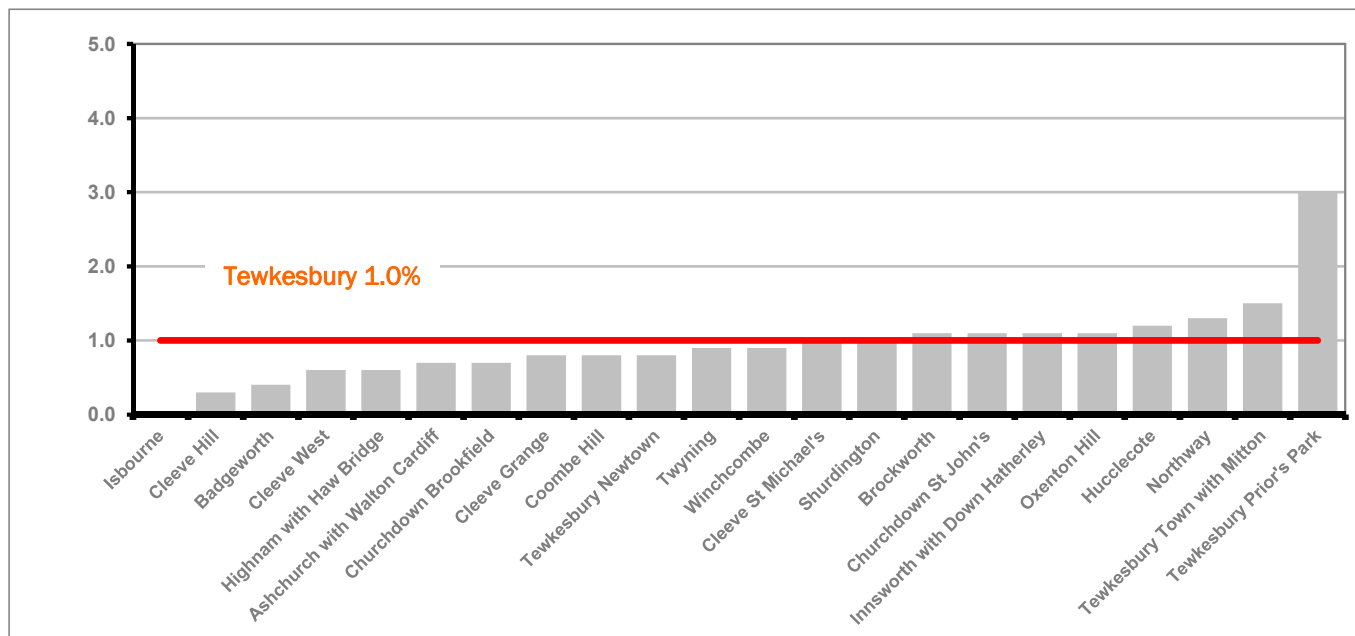


Figure 21 shows the claimant rates in Tewkesbury District wards. The red line represents the average claimant rate across the District of 1.0% and eight wards are above the average.

Table 10: Analysis of Claimant Count at Tewkesbury District level - September 2016

District	Ward	Rate	Rank*
Tewkesbury	Isbourne	<0.3	1
Tewkesbury	Cleeve Hill	0.3	5
Tewkesbury	Badgeworth	0.4	18
Tewkesbury	Cleeve West	0.6	39
Tewkesbury	Highnam with Haw Bridge	0.6	39
Tewkesbury	Ashchurch with Walton Cardiff	0.7	59
Tewkesbury	Churchdown Brookfield	0.7	59
Tewkesbury	Cleeve Grange	0.8	64
Tewkesbury	Coombe Hill	0.8	64
Tewkesbury	Tewkesbury Newtown	0.8	64
Tewkesbury	Twynning	0.9	76
Tewkesbury	Winchcombe	0.9	76
Tewkesbury	Cleeve St Michael's	1.0	89
Tewkesbury	Shurdington	1.0	89
Tewkesbury	Brockworth	1.1	102
Tewkesbury	Churchdown St John's	1.1	102
Tewkesbury	Innsworth with Down Hatherley	1.1	102
Tewkesbury	Oxenton Hill	1.1	102
Tewkesbury	Hucclecote	1.2	110
Tewkesbury	Northway	1.3	116
Tewkesbury	Tewkesbury Town with Mitton	1.5	126
Tewkesbury	Tewkesbury Prior's Park	3.0	144

lowest 10% of county

first quartile of county

second quartile of county

third quartile of county

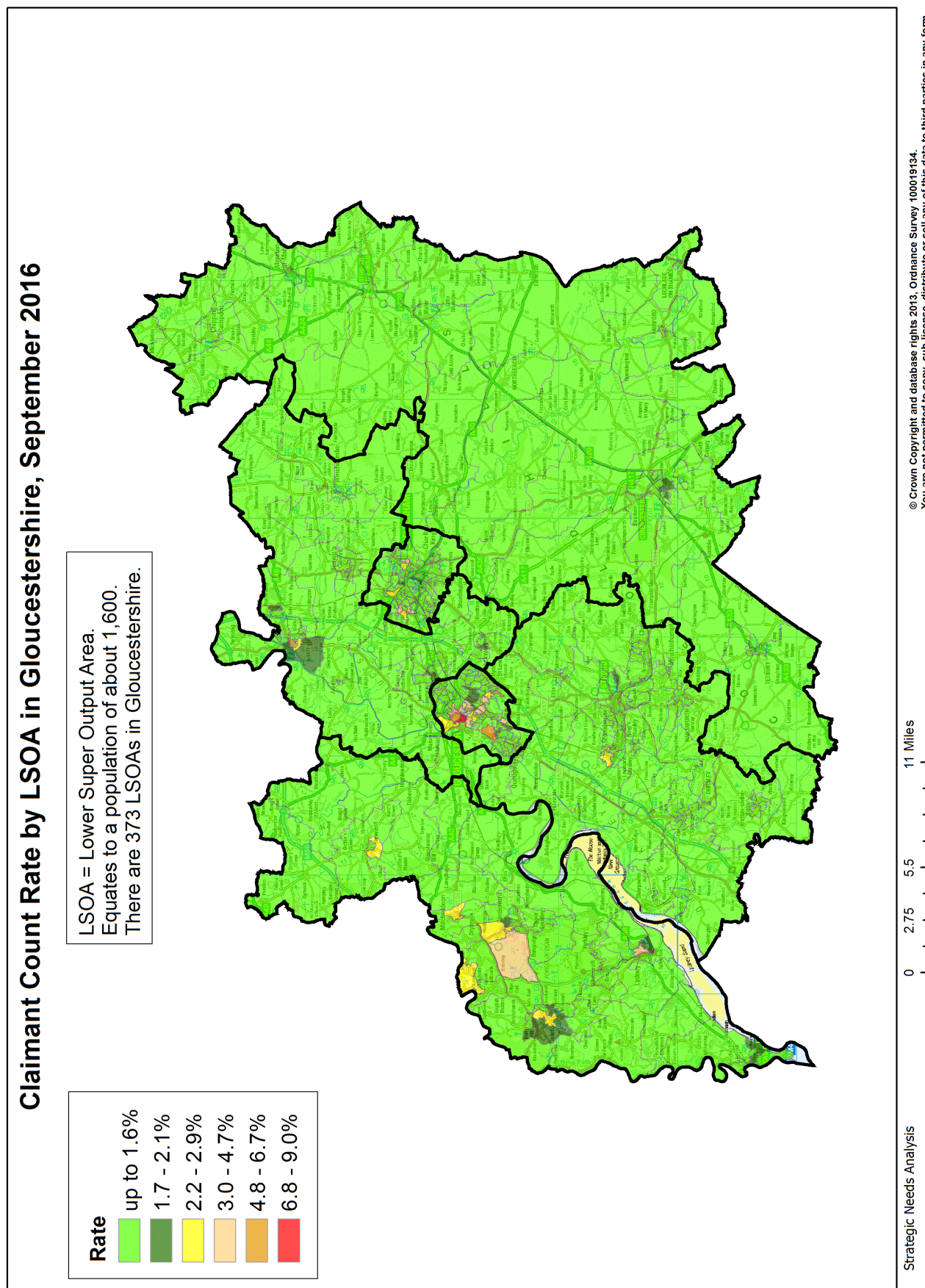
fourth quartile of county

highest 10% of county

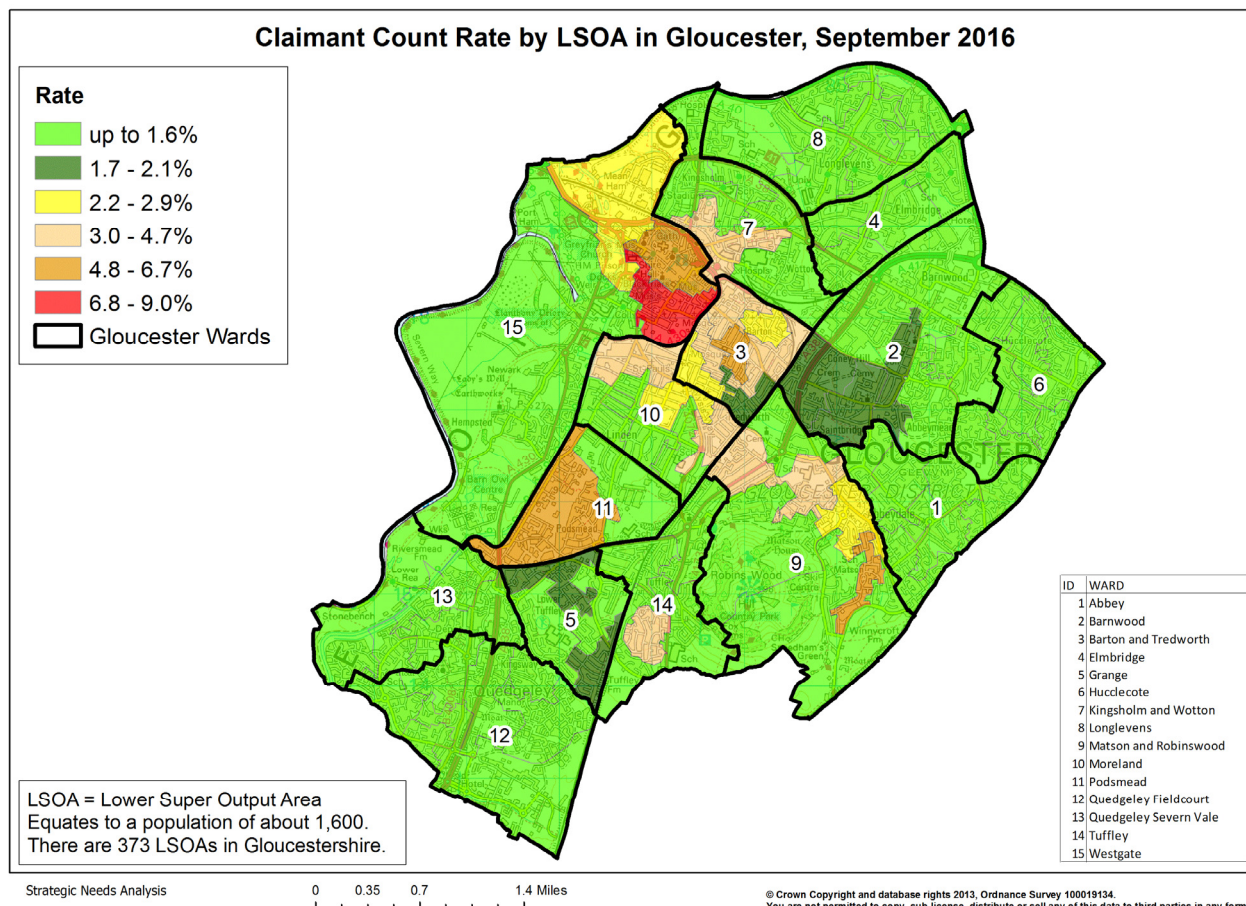
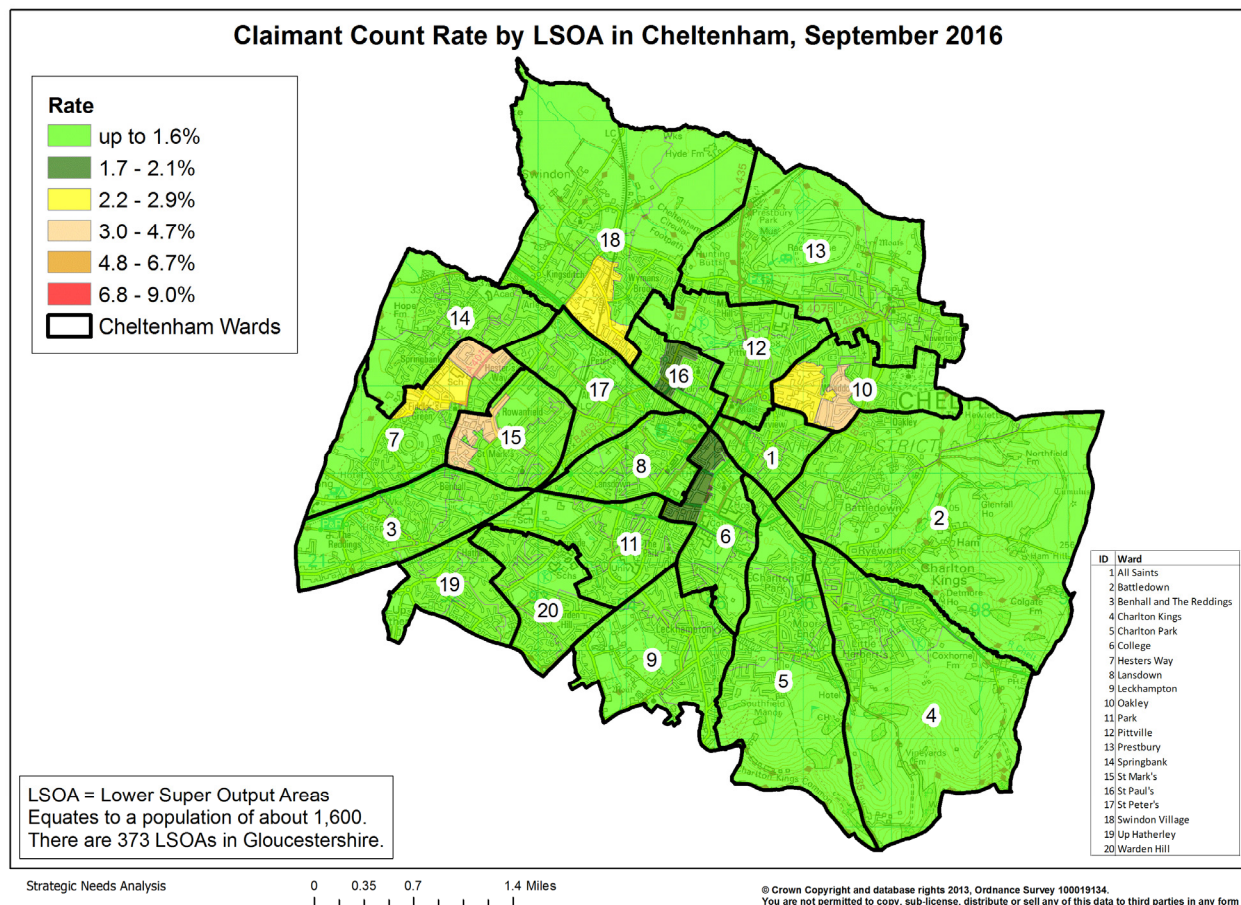
* 1 = "best" and 142 = "worst"

Table 10 shows overall claimant rates for Tewkesbury District wards and their position relative to all wards in Gloucestershire.

PART 5: MAP SHOWING DISTRIBUTION OF CLAIMANT RATE ACROSS GLOUCESTERSHIRE



PART 5: MAP SHOWING DISTRIBUTION OF CLAIMANT RATE ACROSS GLOUCESTERSHIRE



PART 6: YOUTH UNEMPLOYMENT(18-24 year olds)

Youth Claimant Rate and Claimant Count

Figure 22: Claimant Count for Gloucestershire over the past year

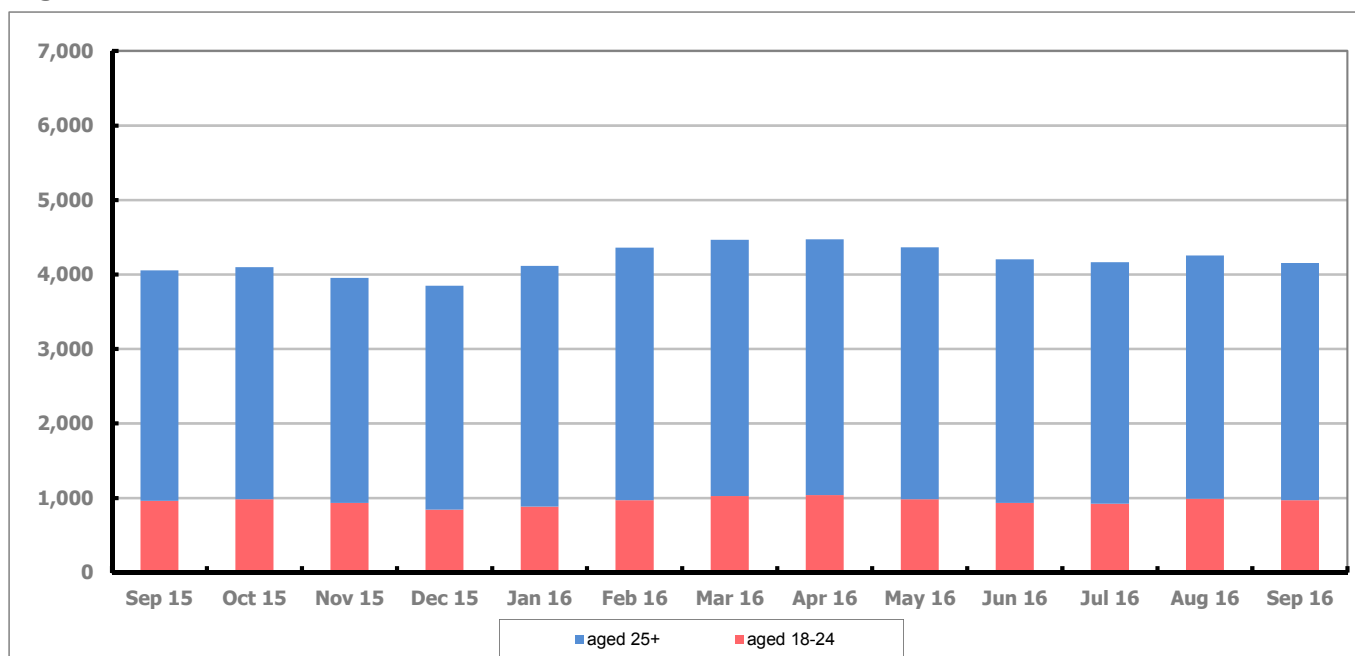


Figure 22 shows that in September 2016, 970 people aged 18-24 were claiming Job Seekers Allowance and Universal Credit who were not in work in Gloucestershire, this represents 23.3% of total working age claimants.

Figure 23: Youth Claimant Rate for Gloucestershire, the South West and UK over the past year

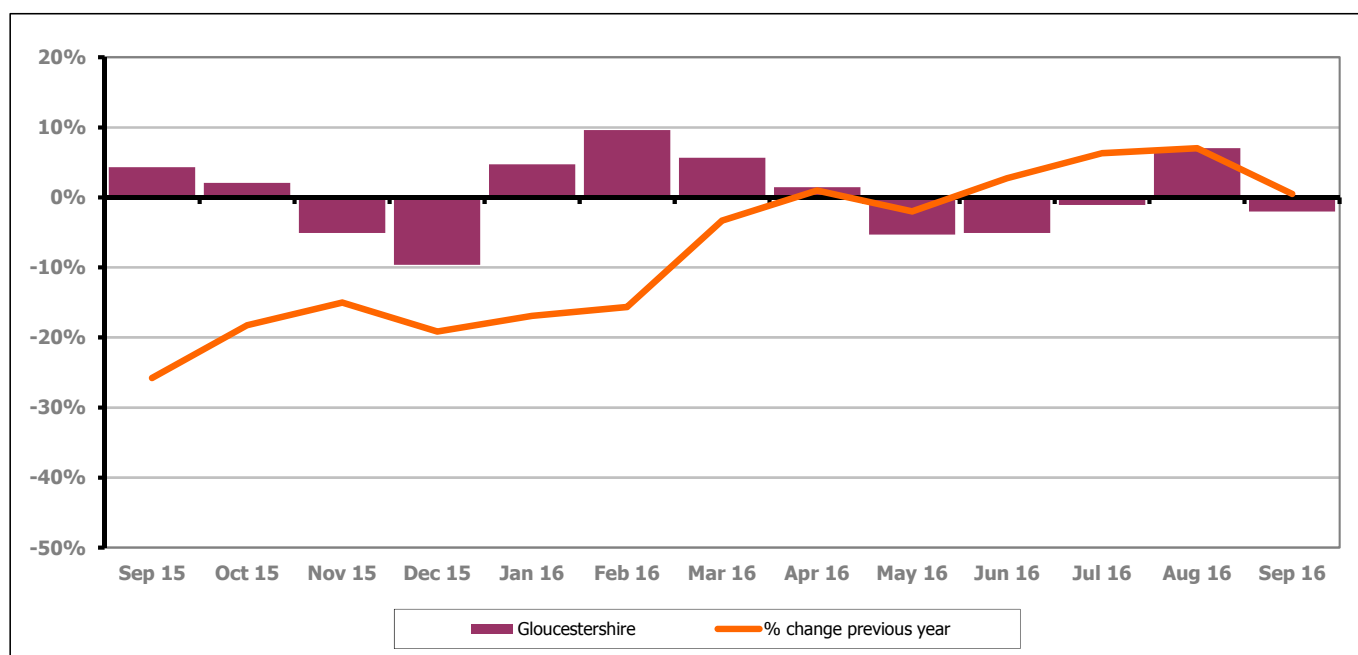


Figure 23 shows the number of young claimants decreased in September 2016 by 2.0% this represented 20 people. Over the last year the number of young claimants also decreased, by 0.5% or 5 people.

PART 7: YOUNG PEOPLE NOT IN EDUCATION, EMPLOYMENT OR TRAINING (NEET) IN GLOUCESTERSHIRE

Data provided by Gloucestershire Youth Support Team on the situation of young people (16-18) in Gloucestershire who are not in education, employment or formal training.

Gloucestershire Youth Support Team is required to report performance with the 16-18 age range against nationally defined criteria for counting the NEET group. The NEET group includes young people actively seeking education, employment or training as well as those young people who are either not yet ready or who are unable to access these opportunities because of their personal circumstances. The figures quoted below include young people in both of these categories.

Summary

At the end of September 2016 there were 372 young people aged 16-18 not in education, employment or training in Gloucestershire and this figure translates into an adjusted (*) 16-18 NEET population of 4.74%. The total number of NEET young people decreased by 31 in September 2016 compared to August 2016, four districts saw a decrease in their figure and two districts saw an increase in theirs.

Total NEET Group by District Area

September 2016 NEET data

	Cheltenham	Cotswold	Forest	Gloucester	Stroud	Tewkesbury	Total
Total NEET	56	27	51	127	66	45	372
Cohort	3089	2503	2505	4410	3746	2653	18906
% NEET	1.81	1.08	2.04	2.88	1.76	1.70	4.74*

If you would like to receive any further information on Gloucestershire's NEET strategy then please contact Ruth.Critchlow@Prospects.co.uk or telephone 01452 426900.