

Unemployment Bulletin

Issue 131 June 2019

Contents

Part 1: Summary A summary of unemployment data at district, County, regional and national level	1
Part 2: County Unemployment figures for the County compared to the South West and the rest of the UK	3
Part 3: Districts A comparative break down of unemployment figures by district	4
Part 4: Wards Further breakdown of unemployment figures by ward:	
Cheltenham	6
Cotswolds	8
Forest of Dean	10
Gloucester	12
Stroud	14
Tewkesbury	16
Part 5: Map Distribution of claimant rate across Gloucestershire	18
Part 6: Youth Unemployment Unemployment data for the 18-24 year old age group	20
Part 7: Young People Data about Young People Not in Education, Employment or Training (NEET)	21

The Claimant Count is a measure of the number of people who are unemployed and claiming benefits. From 1996 until the recent introduction of Universal Credit, this was based on the number of people claiming Jobseeker's Allowance. However, since its introduction some unemployment benefit claimants will be claiming Universal Credit instead. **To reflect this change, the Claimant Count has been expanded to include people claiming Jobseeker's Allowance plus those who claim Universal Credit and who are searching for work.**

Gloucestershire is in the process of transitioning to full Universal Credit. This means a broader span of claimants will be required to look for work than previously under Jobseekers Allowance. As more people are brought within the coverage of Universal Credit, the Claimant Count is set to rise noticeably over time. This will happen irrespective of how the economy performs and is a feature of the design of Universal Credit which brings additional groups of people into 'Searching for Work' conditionality (and therefore the Claimant Count), to help encourage and support these claimants into work.

For more information about Universal Credit please see the [ONS website](#).

INTRODUCTION

The Unemployment Bulletin provides a monthly update on unemployment data for Gloucestershire, the South West region and the United Kingdom. It is produced by the Data & Analysis Team in the County Council's Planning, Performance and Change function. The data are sourced from the Office for National Statistics via Nomis (www.nomis.co.uk). All data are rounded to the nearest 5 and may not precisely add to the sum of the number of people claiming JSA, and the number of people claiming Universal Credit required to seek work, due to independent rounding.

PART 1: SUMMARY

The claimant rate in Gloucestershire was **1.8%** in June 2019. The South West rate and UK remained the same as last month at 2.0% and 2.7% respectively. Gloucestershire's rate was 0.2% lower than the South West average of 2.0%, and 0.9% lower than the UK average of 2.7%.

The claimant count in Gloucestershire in June 2019 increased by **65 people**. The amount of people claiming in June 2019 was 0.9% higher than the number in May 2019. This compares to a 1.8% increase in the South West and a 2.7% increase for the UK.

Produced by:

Data & Analysis Team
Planning, Performance and Change
Gloucestershire County Council
July 2019

DISTRICTS AT A GLANCE

At a glance unemployment information grouped by district. Includes:

Claim count: Total number of people claiming Job Seekers Allowance and Universal Credit who are not in work in June 2019

Compared to last month: How much larger/smaller June's claimant count is compared to May expressed as a %

Claimant rate: The % of working age population claiming Job Seekers Allowance and Universal Credit who are not in work in June 2019

Highest claiming ward: The ward with the highest claim count in that district and the rate

CHELTEMHAM BOROUGH

Claim count:	1,365
Compared to last month:	1.1%
Claimant rate:	1.8%
Highest claiming ward	Hester's Way (4.4%)

GLOUCESTER CITY

Claim count:	2,195
Compared to last month:	2.3%
Claimant rate:	2.7%
Highest claiming wards	Westgate (5.4%)

COTSWOLD DISTRICT

Claim count:	650
Compared to last month:	-5.8%
Claimant rate:	1.3%
Highest claiming ward	Watermoor (3.6%)

STROUD DISTRICT

Claim count:	885
Compared to last month:	-1.7%
Claimant rate:	1.2%
Highest claiming wards	Slade (3.2%)

FOREST OF DEAN

Claim count:	1,105
Compared to last month:	3.8%
Claimant rate:	2.2%
Highest claiming ward	Lydney East (4.1%)

TEWKESBURY BOROUGH

Claim count:	850
Compared to last month:	1.8%
Claimant rate:	1.5%
Highest claiming ward	Tewkesbury Prior's Park (4.1%)

PART 2: UK, SW AND GLOUCESTERSHIRE INDICATORS

The unemployment situation in Gloucestershire compared to the South West and the UK.

Claimant Rate

Figure 1: Claimant Rate for Gloucestershire, the South West and UK over the past year

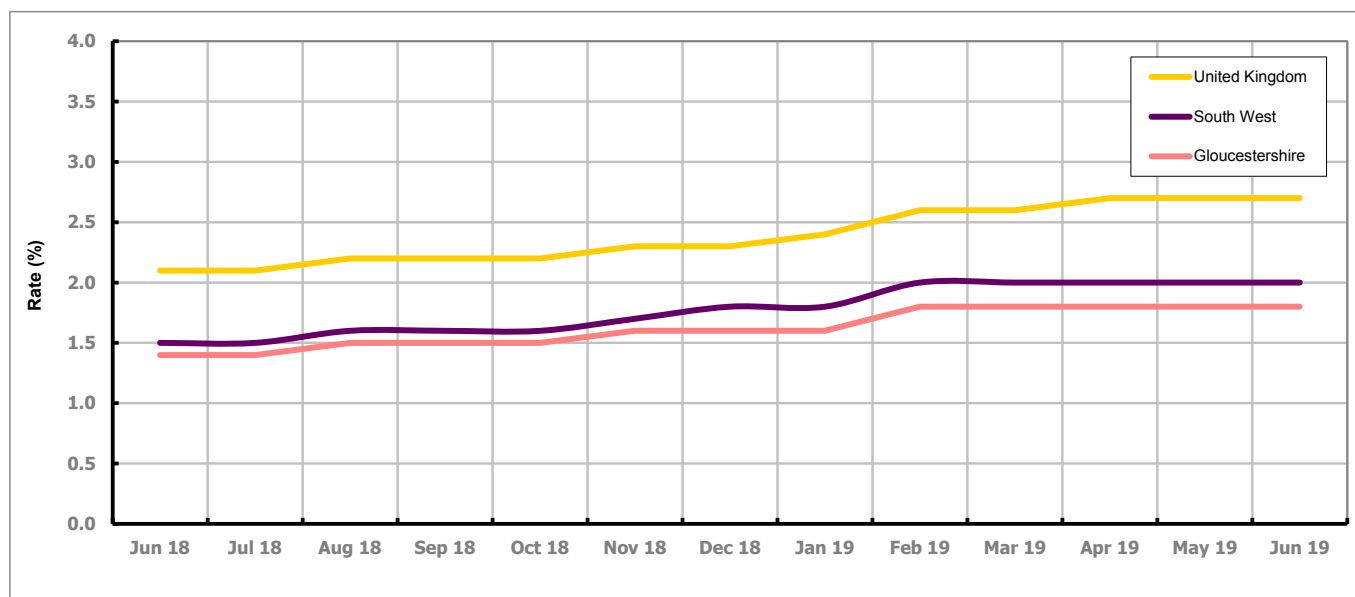


Figure 1 shows the claimant rate for Gloucestershire at 1.8% in June 2019. The Gloucestershire rate has been lower than the South West average since December 2015, with the exception of April and May 2016 when it was the same. It has been persistently lower by approximately 0.8% against the UK average.

Claimant Count

Table 1: Analysis of UK, South West and Gloucestershire Claimant Counts

Area	Claimant Count in June 2019	% change on May 2019	Consecutive months increasing
UK	1,143,225	2.7%	11
South West	68,280	1.8%	11
Gloucestershire	7,050	0.9%	12

Table 1 shows that in June 2019, the number of claimants in Gloucestershire was 0.9% higher than the number in May 2019.

PART 3: LOCAL AUTHORITY DISTRICT ANALYSIS

Claimant Rate and Claimant Count

Figure 2: Claimant Rate (%) across Gloucestershire - June 2019

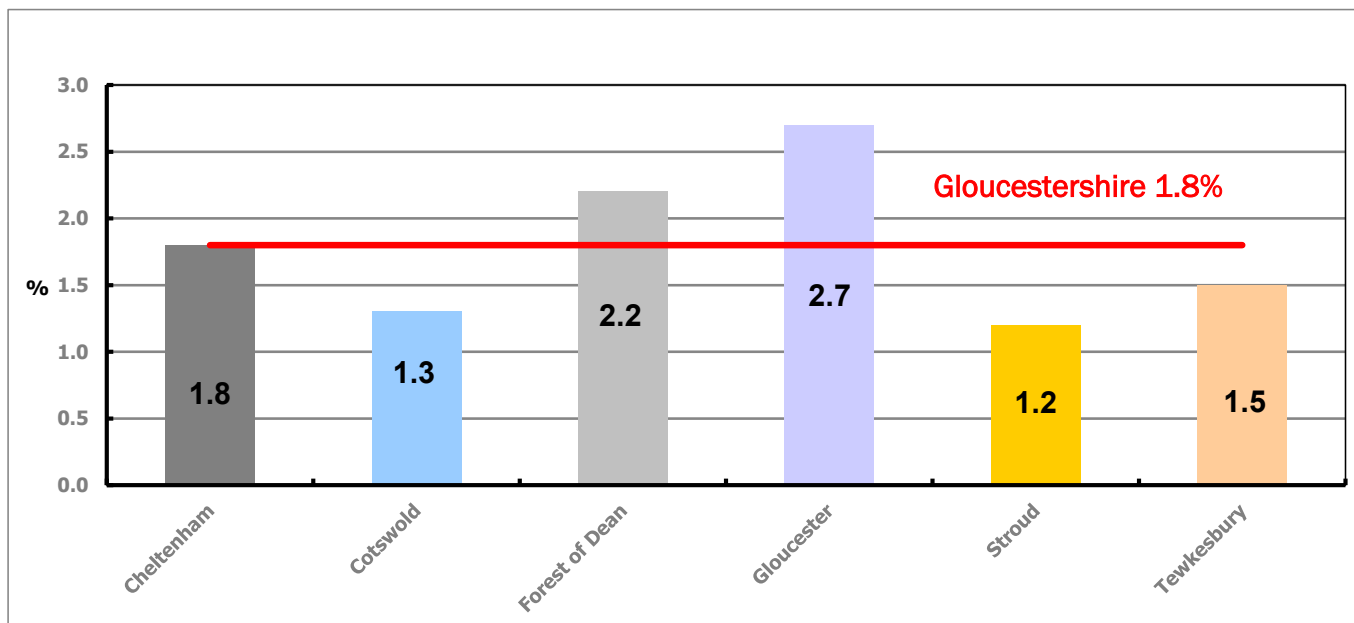


Figure 2 shows the claimant rate for June 2019 in Gloucestershire. Between May 2019 and June 2019, the rate increased in the Forest of Dean and Gloucester, and decreased in Stroud. All other districts stayed the same.

Table 2: Analysis of Gloucestershire and District Claimant Counts

Total	Jun 19 Number	Jun 19 Rate	May 19 Number	May 19 Rate	Monthly change	% monthly change	Monthly change of rate
Gloucestershire	7,050	1.8	6,985	1.8	65	0.9%	0.0
Cheltenham	1,365	1.8	1,350	1.8	15	1.1%	0.0
Cotswold	650	1.3	690	1.3	-40	-5.8%	0.0
Forest of Dean	1,105	2.2	1,065	2.1	40	3.8%	0.1
Gloucester	2,195	2.7	2,145	2.6	50	2.3%	0.1
Stroud	885	1.2	900	1.3	-15	-1.7%	-0.1
Tewkesbury	850	1.5	835	1.5	15	1.8%	0.0

Table 2 shows the change in the claimant count in June 2019 compared to May 2019. Cotswold and Stroud saw a decrease in the number of claimants. All other districts saw an increase.

Table 3: Analysis of Male Gloucestershire and District Claimant Counts

Male	Jun 19 Number	Jun 19 Rate	May 19 Number	May 19 Rate	Monthly change	% monthly change	Monthly change of rate
Gloucestershire	4,110	2.2	4,075	2.1	35	0.9%	0.1
Cheltenham	825	2.2	815	2.2	10	1.2%	0.0
Cotswold	370	1.5	395	1.6	-25	-6.3%	-0.1
Forest of Dean	645	2.6	630	2.5	15	2.4%	0.1
Gloucester	1,330	3.3	1,300	3.2	30	2.3%	0.1
Stroud	490	1.4	485	1.4	5	1.0%	0.0
Tewkesbury	450	1.7	450	1.7	0	0.0%	0.0

Table 3 shows the change in the male claimant count in June 2019 compared to May 2019. Cotswold saw a decrease in the number of male claimants, while Tewkesbury saw no change. All other districts saw an increase.

Table 4: Analysis of Female Gloucestershire and District Claimant Counts

Female	Jun 19 Number	Jun 19 Rate	May 19 Number	May 19 Rate	Monthly change	% monthly change	Monthly change of rate
Gloucestershire	2,935	1.5	2,910	1.5	25	0.9%	0.0
Cheltenham	540	1.5	535	1.5	5	0.9%	0.0
Cotswold	280	1.1	295	1.1	-15	-5.1%	0.0
Forest of Dean	460	1.8	435	1.7	25	5.7%	0.1
Gloucester	865	2.1	845	2.1	20	2.4%	0.0
Stroud	395	1.1	420	1.2	-25	-6.0%	-0.1
Tewkesbury	400	1.4	380	1.4	20	5.3%	0.0

Table 4 shows the change in the female claimant count in June 2019 compared to May 2019. Cotswold and Stroud saw a decrease in the number of female claimants. All other districts saw an increase.

PART 4: LOCAL AUTHORITY DISTRICT AND WARD ANALYSIS

This section covers the six districts and a comparison of their constituent wards.

4.1 Cheltenham Borough

Claimant Rate and Claimant Count

Figure 3: Cheltenham Borough claimant rate over the last year

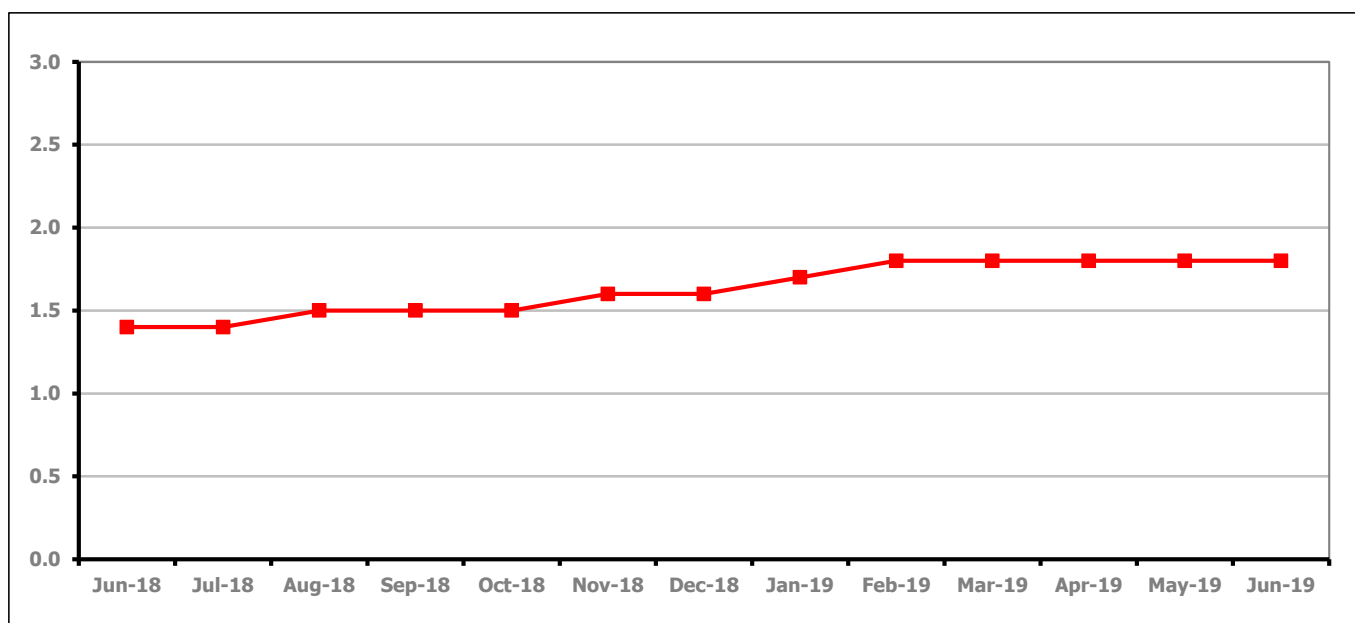


Figure 3 shows the claimant rate in Cheltenham stayed the same as last month at 1.8%.

Figure 4: Claimant rates across Cheltenham Borough wards - June 2019

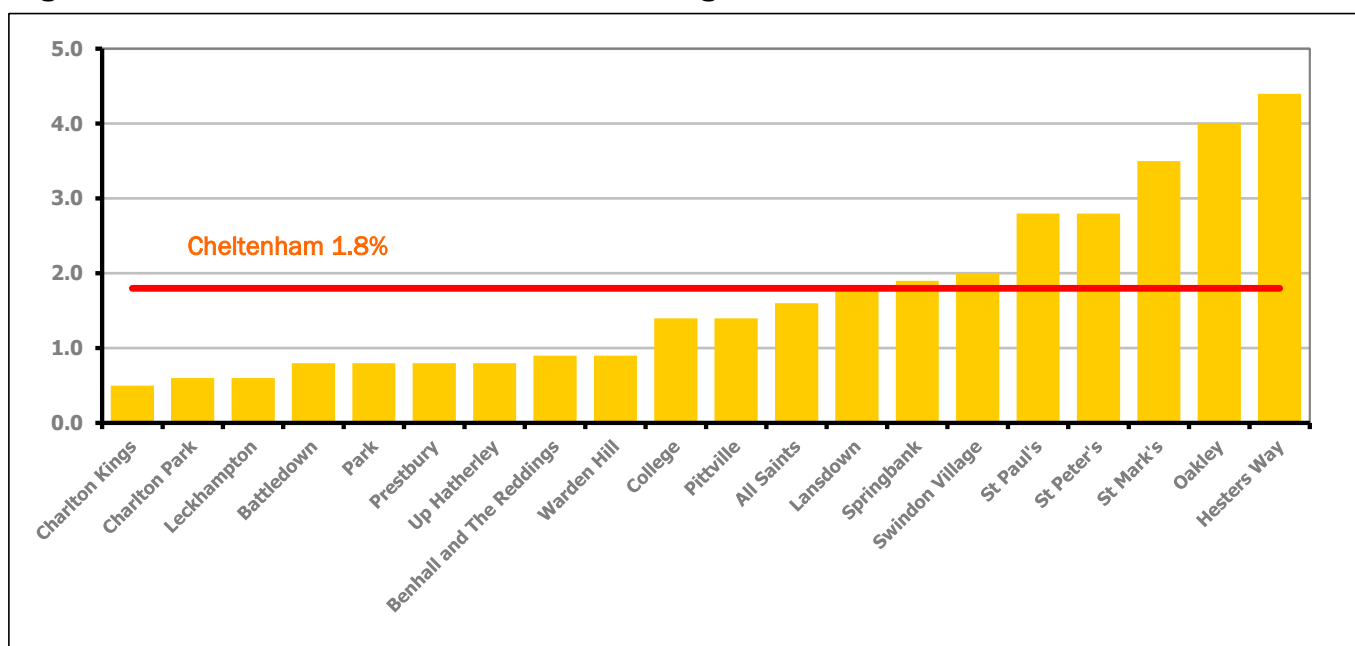


Figure 4 shows the claimant rates for Cheltenham Borough wards. The red line represents the average claimant rate across the Borough of 1.8%. Seven wards lie above the average.

PART 4: LOCAL AUTHORITY DISTRICT AND WARD ANALYSIS

4.1 Cheltenham Borough continued...

Table 5: Analysis of Claimant Count at Cheltenham Borough ward level - June 2019

District	Ward	Rate	Rank*
Cheltenham	Charlton Kings	0.5	4
Cheltenham	Charlton Park	0.6	7
Cheltenham	Leckhampton	0.6	7
Cheltenham	Battledown	0.8	22
Cheltenham	Park	0.8	22
Cheltenham	Prestbury	0.8	22
Cheltenham	Up Hatherley	0.8	22
Cheltenham	Benhall and The Reddings	0.9	31
Cheltenham	Warden Hill	0.9	31
Cheltenham	College	1.4	83
Cheltenham	Pittville	1.4	83
Cheltenham	All Saints	1.6	96
Cheltenham	Lansdown	1.8	104
Cheltenham	Springbank	1.9	108
Cheltenham	Swindon Village	2.0	110
Cheltenham	St Paul's	2.8	125
Cheltenham	St Peter's	2.8	125
Cheltenham	St Mark's	3.5	132
Cheltenham	Oakley	4.0	138
Cheltenham	Hesters Way	4.4	141

	lowest 10% of county
	first quartile of county
	second quartile of county
	third quartile of county
	fourth quartile of county
	highest 10% of county

* 1 = "best" and 146 = "worst"

Table 5 shows overall claimant rates for Cheltenham Borough wards and their position relative to all wards in Gloucestershire.

PART 4: LOCAL AUTHORITY DISTRICT AND WARD ANALYSIS

4.2 Cotswold District

Claimant Rate and Claimant Count

Figure 5: Cotswold District claimant rate over the last year

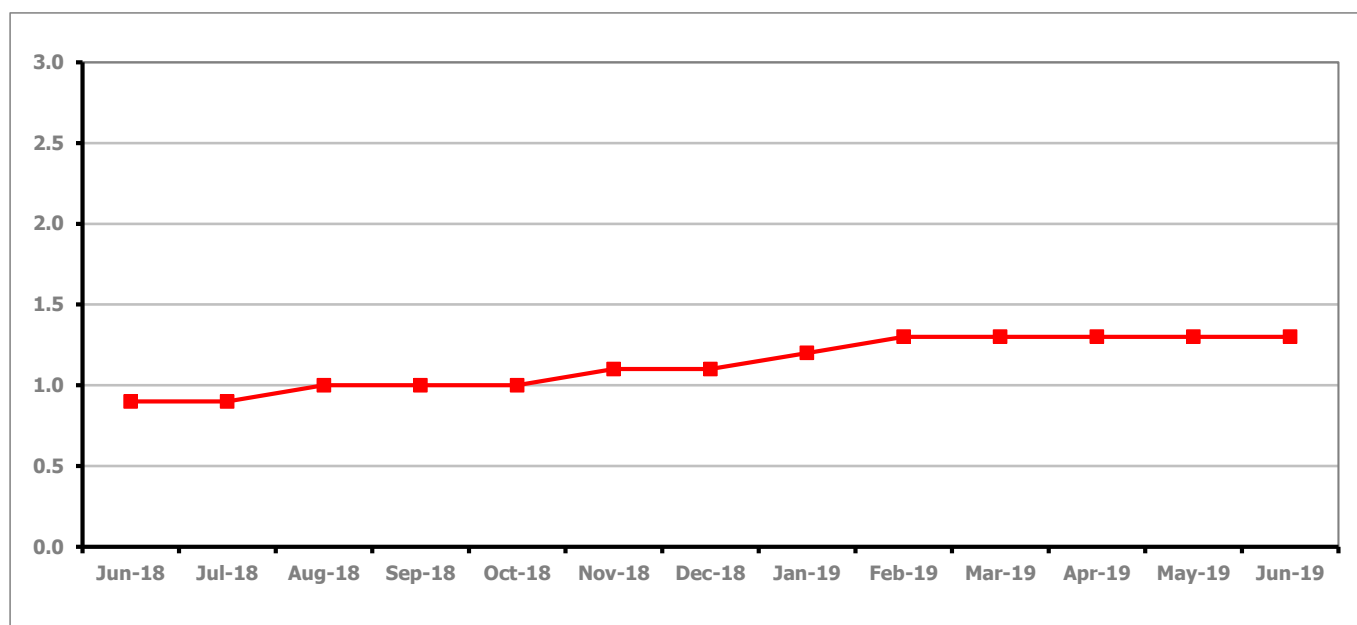


Figure 5 shows the claimant rate in Cotswold District remained the same as last month at 1.3%.

Figure 6: Claimant rates across Cotswold District wards - June 2019

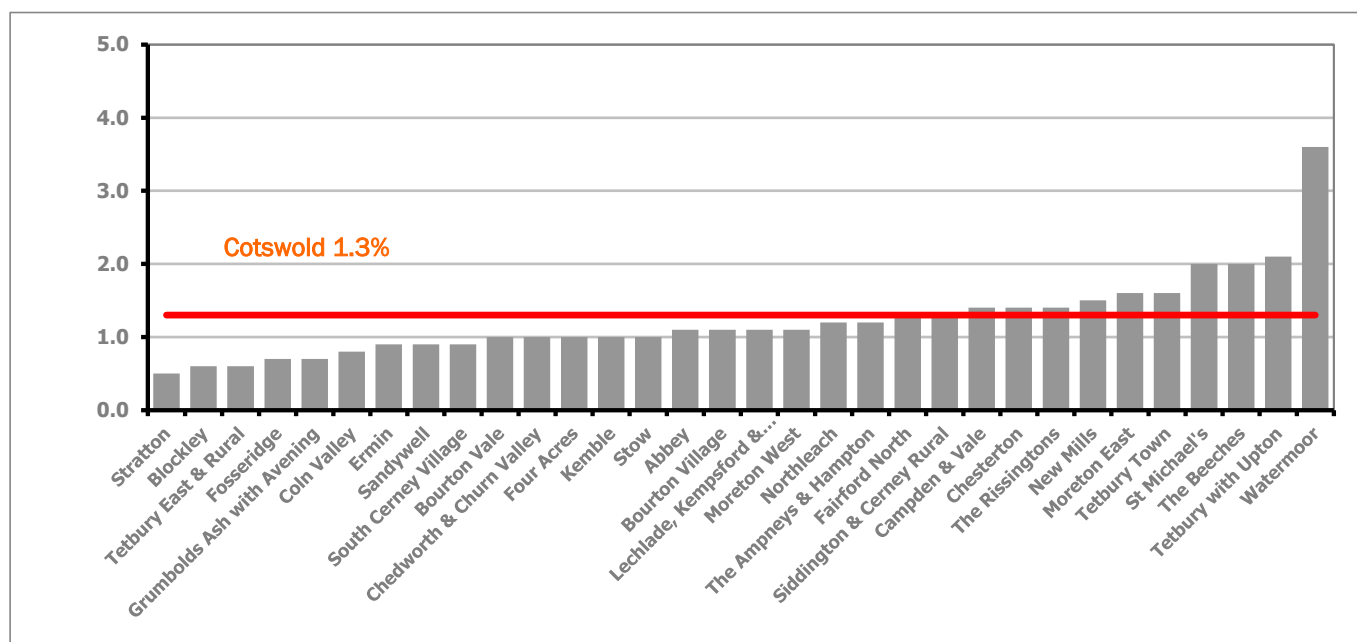


Figure 6 shows the claimant rates for Cotswold District wards. The red line represents the average claimant rate across the District of 1.3%. Ten wards lie above the average.

PART 4: LOCAL AUTHORITY DISTRICT AND WARD ANALYSIS

4.2 Cotswold District continued...

Table 6: Analysis of Claimant Count at Cotswold District ward level - June 2019

District	Ward	Rate	Rank*
Cotswolds	Stratton	0.5	4
Cotswolds	Blockley	0.6	7
Cotswolds	Tetbury East & Rural	0.6	7
Cotswolds	Fosseridge	0.7	14
Cotswolds	Grumbolds Ash with Avening	0.7	14
Cotswolds	Coln Valley	0.8	22
Cotswolds	Ermin	0.9	31
Cotswolds	Sandywell	0.9	31
Cotswolds	South Cerney Village	0.9	31
Cotswolds	Bourton Vale	1.0	40
Cotswolds	Chedworth & Churn Valley	1.0	40
Cotswolds	Four Acres	1.0	40
Cotswolds	Kemble	1.0	40
Cotswolds	Stow	1.0	40
Cotswolds	Abbey	1.1	55
Cotswolds	Bourton Village	1.1	55
Cotswolds	Lechlade, Kempsford & Fairford South	1.1	55
Cotswolds	Moreton West	1.1	55
Cotswolds	Northleach	1.2	63
Cotswolds	The Ampneys & Hampton	1.2	63
Cotswolds	Fairford North	1.3	74
Cotswolds	Siddington & Cerney Rural	1.3	74
Cotswolds	Campden & Vale	1.4	83
Cotswolds	Chesterton	1.4	83
Cotswolds	The Rissingtons	1.4	83
Cotswolds	New Mills	1.5	93
Cotswolds	Moreton East	1.6	96
Cotswolds	Tetbury Town	1.6	96
Cotswolds	St Michael's	2.0	110
Cotswolds	The Beeches	2.0	110
Cotswolds	Tetbury with Upton	2.1	114
Cotswolds	Watermoor	3.6	134

	lowest 10% of county
	first quartile of county
	second quartile of county
	third quartile of county
	fourth quartile of county
	highest 10% of county

* 1 = "best" and 146 = "worst"

Table 6 shows overall claimant rates for Cotswold District wards and their position relative to all wards in Gloucestershire.

PART 4: LOCAL AUTHORITY DISTRICT AND WARD ANALYSIS

4.3 Forest of Dean District

Claimant Rate and Claimant Count

Figure 7: Forest of Dean District claimant rate over the last year

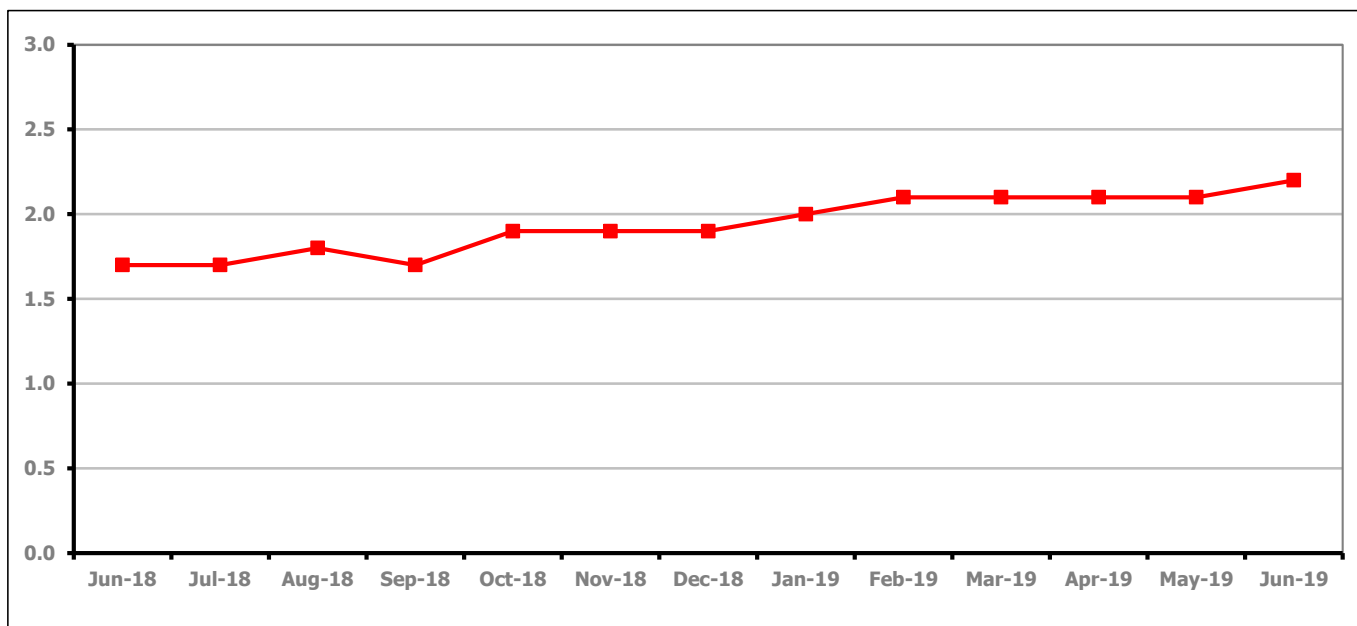


Figure 7 shows the claimant rate in the Forest of Dean increased in June 2019 to 2.2%

Figure 8: Claimant rates across Forest of Dean District wards - June 2019

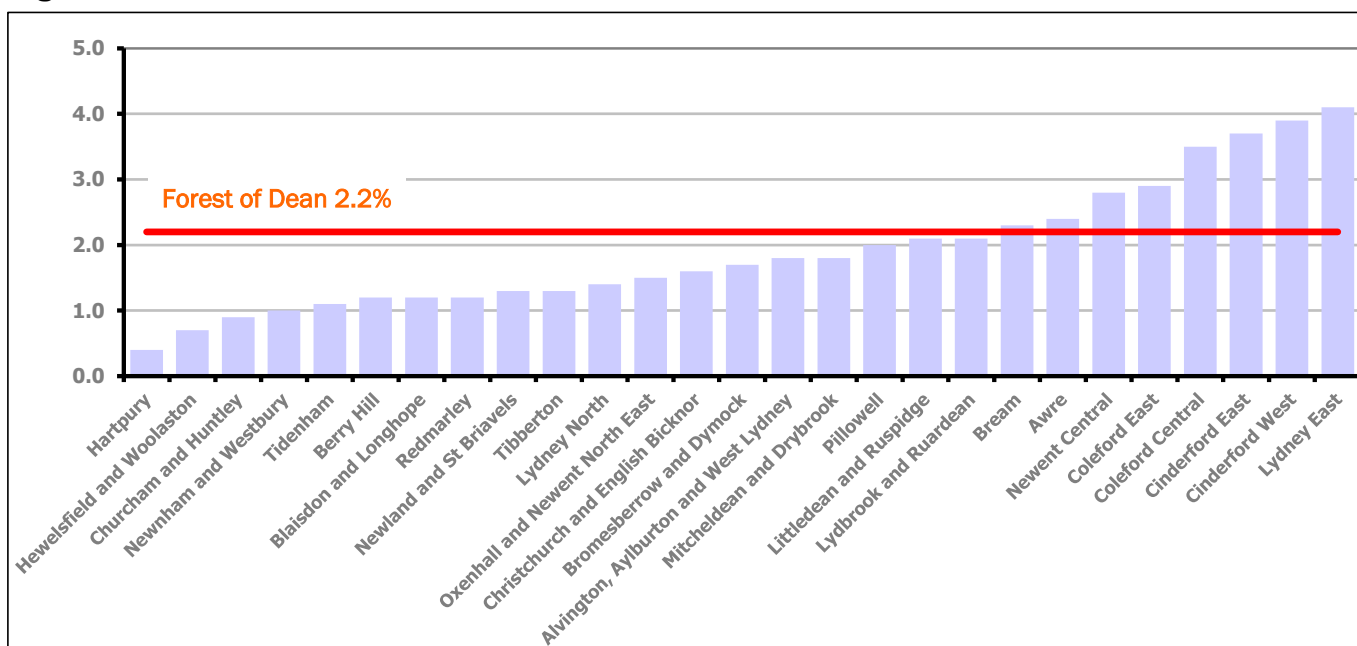


Figure 8 shows the claimant rates for the Forest of Dean District wards. The red line represents the average claimant rate across the District of 2.2%. Eight wards lie above the average.

PART 4: LOCAL AUTHORITY DISTRICT AND WARD ANALYSIS

4.3 Forest of Dean District continued...

Table 7: Analysis of Claimant Count at Forest of Dean District ward level - June 2019

District	Ward	Rate	Rank*
Forest	Hartpury	0.4	2
Forest	Hewelsfield and Woolaston	0.7	14
Forest	Churcham and Huntley	0.9	31
Forest	Newnham and Westbury	1.0	40
Forest	Tidenham	1.1	55
Forest	Berry Hill	1.2	63
Forest	Blaisdon and Longhope	1.2	63
Forest	Redmarley	1.2	63
Forest	Newland and St Briavels	1.3	74
Forest	Tibberton	1.3	74
Forest	Lydney North	1.4	83
Forest	Oxenhall and Newent North East	1.5	93
Forest	Christchurch and English Bicknor	1.6	96
Forest	Bromesberrow and Dymock	1.7	101
Forest	Alvington, Aylburton and West Lydney	1.8	104
Forest	Mitcheldean and Drybrook	1.8	104
Forest	Pillowell	2.0	110
Forest	Littledean and Ruspidge	2.1	114
Forest	Lydbrook and Ruardean	2.1	114
Forest	Bream	2.3	119
Forest	Awre	2.4	123
Forest	Newent Central	2.8	125
Forest	Coleford East	2.9	128
Forest	Coleford Central	3.5	132
Forest	Cinderford East	3.7	135
Forest	Cinderford West	3.9	137
Forest	Lydney East	4.1	139

	lowest 10% of county
	first quartile of county
	second quartile of county
	third quartile of county
	fourth quartile of county
	highest 10% of county

* 1 = "best" and 146 = "worst"

Table 7 shows overall claimant rates for the Forest of Dean District wards and their position relative to all wards in Gloucestershire.

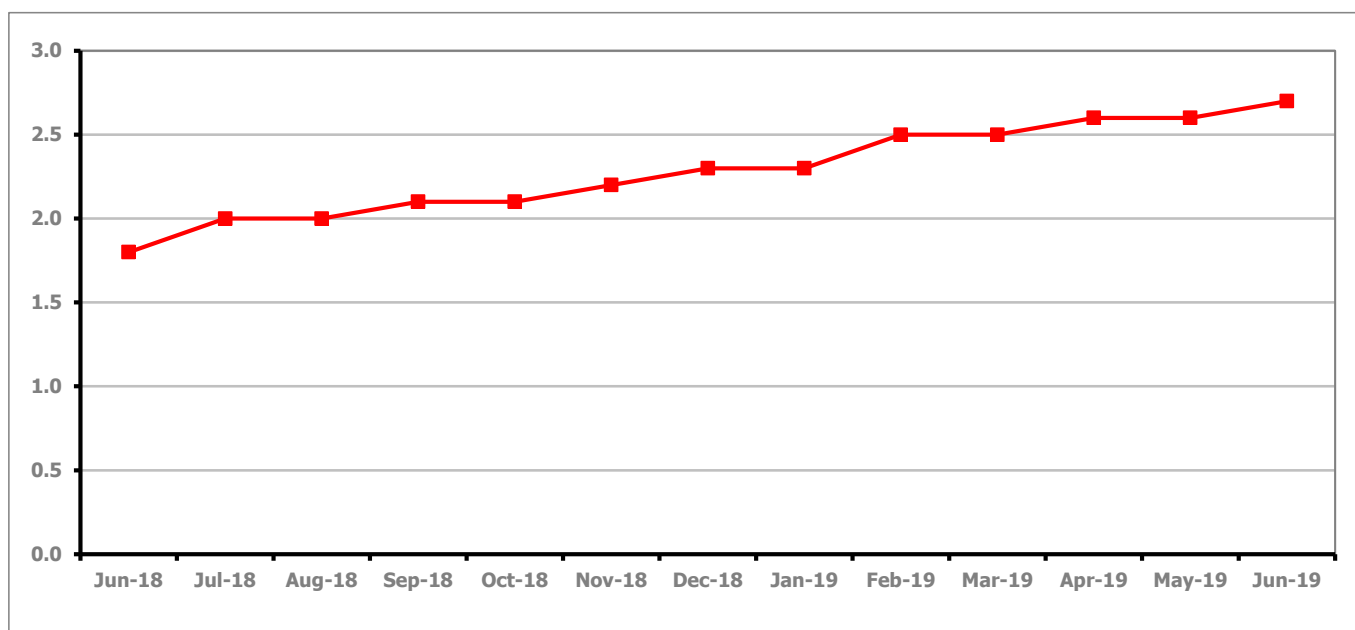
PART 4: LOCAL AUTHORITY DISTRICT AND WARD ANALYSIS**4.4 Gloucester City****Claimant Rate and Claimant Count***Figure 9: Gloucester City claimant rate over the last year*

Figure 9 shows the claimant rate for Gloucester City increased in June 2019 to 2.7%.

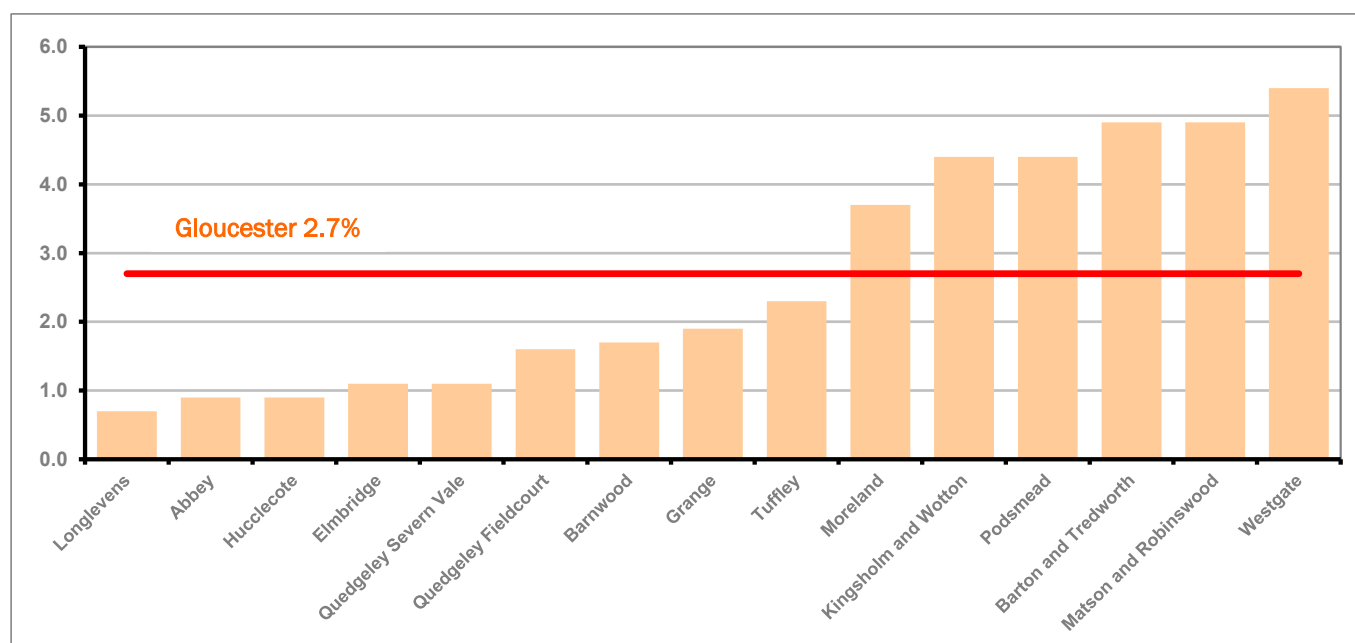
Figure 10: Claimant rates across Gloucester City wards - June 2019

Figure 10 shows the claimant rates for Gloucester City district wards. The red line represents the average claimant rate across the City of 2.7%. Six wards lie above the average.

PART 4: LOCAL AUTHORITY DISTRICT AND WARD ANALYSIS

4.4 Gloucester City continued...

Table 8: Analysis of Claimant Count at Gloucester City ward level - June 2019

District	Ward	Rate	Rank*
Gloucester	Longlevens	0.7	14
Gloucester	Abbey	0.9	31
Gloucester	Hucclecote	0.9	31
Gloucester	Elmbridge	1.1	55
Gloucester	Quedgeley Severn Vale	1.1	55
Gloucester	Quedgeley Fieldcourt	1.6	96
Gloucester	Barnwood	1.7	101
Gloucester	Grange	1.9	108
Gloucester	Tuffley	2.3	119
Gloucester	Moreland	3.7	135
Gloucester	Kingsholm and Wotton	4.4	141
Gloucester	Podsmead	4.4	141
Gloucester	Barton and Tredworth	4.9	144
Gloucester	Matson and Robinswood	4.9	144
Gloucester	Westgate	5.4	146

	lowest 10% of county
	first quartile of county
	second quartile of county
	third quartile of county
	fourth quartile of county
	highest 10% of county

* 1 = "best" and 146 = "worst"

Table 8 shows overall claimant rates for Gloucester City wards and their position relative to all wards in Gloucestershire.

PART 4: LOCAL AUTHORITY DISTRICT AND WARD ANALYSIS

4.5 Stroud District

Claimant Rate and Claimant Count

Figure 11: Stroud District claimant rate over the last year

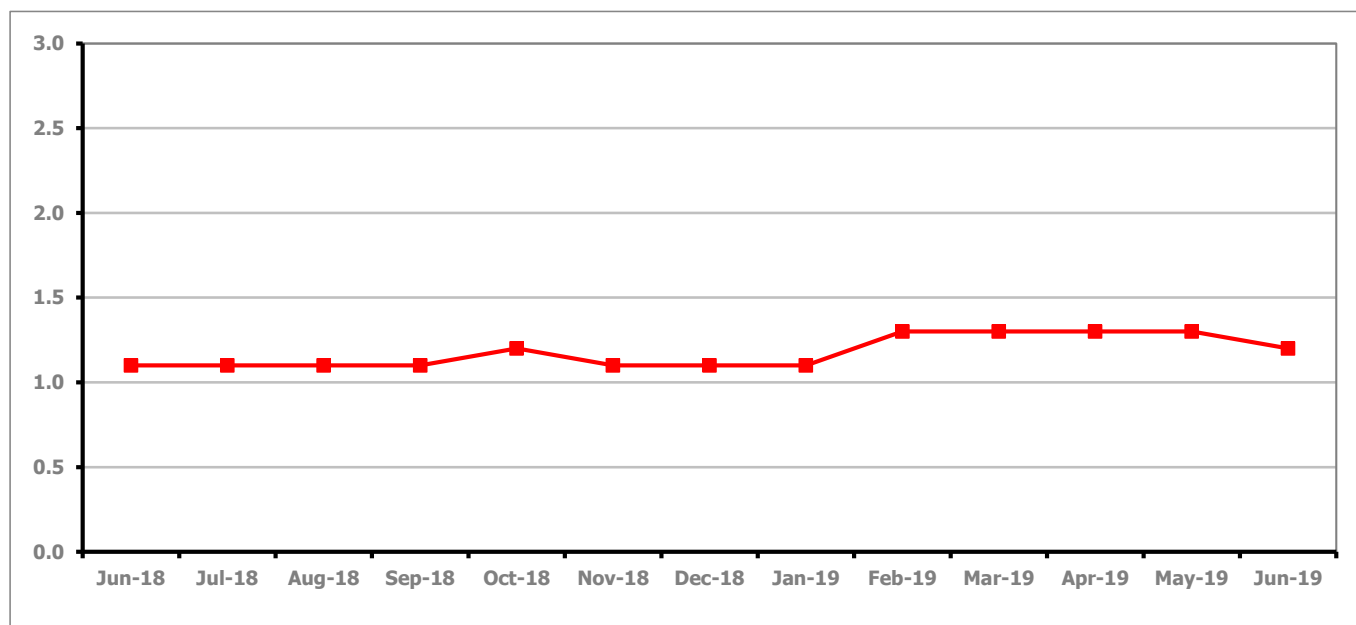


Figure 11 shows the claimant rate for Stroud decreased in June 2019 to 1.2%.

Figure 12: Claimant rates across Stroud District wards - June 2019

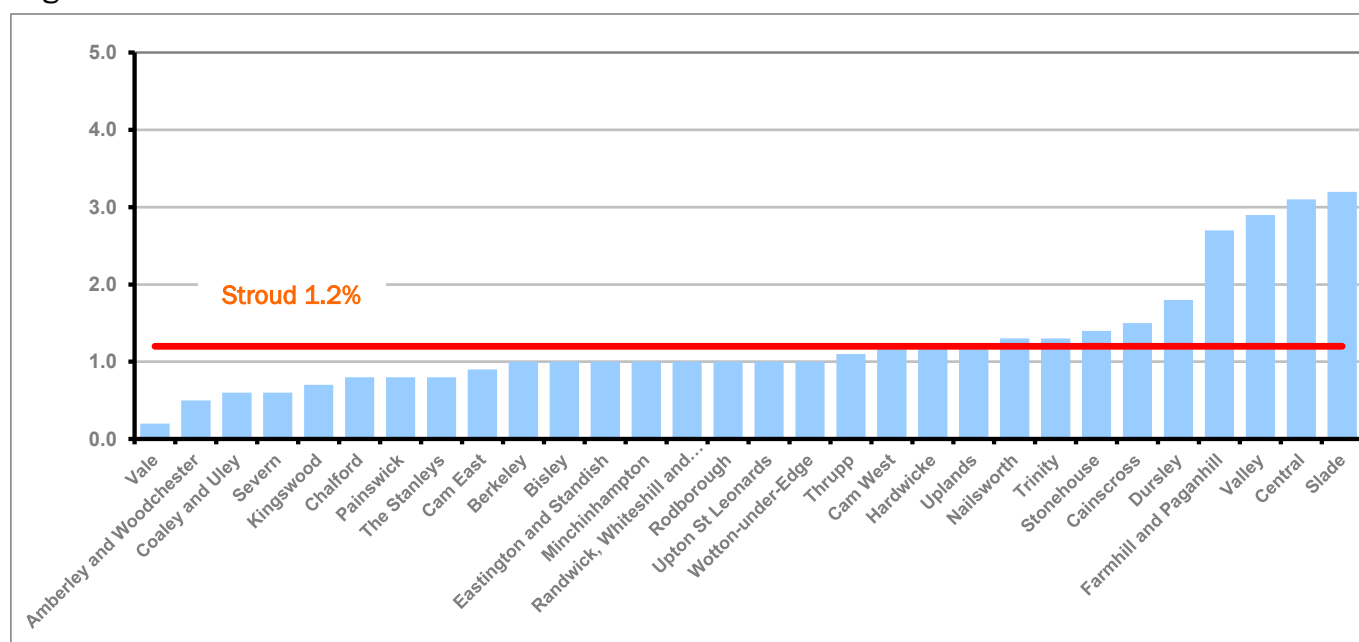


Figure 12 shows the claimant rates in Stroud District wards. The red line represents the average claimant rate across the District of 1.2%. Nine wards are above the average.

PART 4: LOCAL AUTHORITY AND DISTRICT ANALYSIS

4.5 Stroud District continued...

Table 9: Analysis of Claimant Count at Stroud District ward level - June 2019

District	Ward	Rate	Rank*
Stroud	Vale	0.2	1
Stroud	Amberley and Woodchester	0.5	4
Stroud	Coaley and Uley	0.6	7
Stroud	Severn	0.6	7
Stroud	Kingswood	0.7	14
Stroud	Chalford	0.8	22
Stroud	Painswick	0.8	22
Stroud	The Stanleys	0.8	22
Stroud	Cam East	0.9	31
Stroud	Berkeley	1.0	40
Stroud	Bisley	1.0	40
Stroud	Eastington and Standish	1.0	40
Stroud	Minchinhampton	1.0	40
Stroud	Randwick, Whiteshill and Ruscombe	1.0	40
Stroud	Rodborough	1.0	40
Stroud	Upton St Leonards	1.0	40
Stroud	Wotton-under-Edge	1.0	40
Stroud	Thrupp	1.1	55
Stroud	Cam West	1.2	63
Stroud	Hardwicke	1.2	63
Stroud	Uplands	1.2	63
Stroud	Nailsworth	1.3	74
Stroud	Trinity	1.3	74
Stroud	Stonehouse	1.4	83
Stroud	Cainscross	1.5	93
Stroud	Dursley	1.8	104
Stroud	Farmhill and Paganhill	2.7	124
Stroud	Valley	2.9	128
Stroud	Central	3.1	130
Stroud	Slade	3.2	131

	lowest 10% of county
	first quartile of county
	second quartile of county
	third quartile of county
	fourth quartile of county
	highest 10% of county

* 1 = "best" and 146 = "worst"

Table 9 shows overall claimant rates for Stroud District wards and their position relative to all wards in Gloucestershire.

PART 4: LOCAL AUTHORITY DISTRICT AND WARD ANALYSIS

4.6 Tewkesbury Borough

Claimant Rate and Claimant Count

Figure 13: Tewkesbury Borough claimant rate over the last year

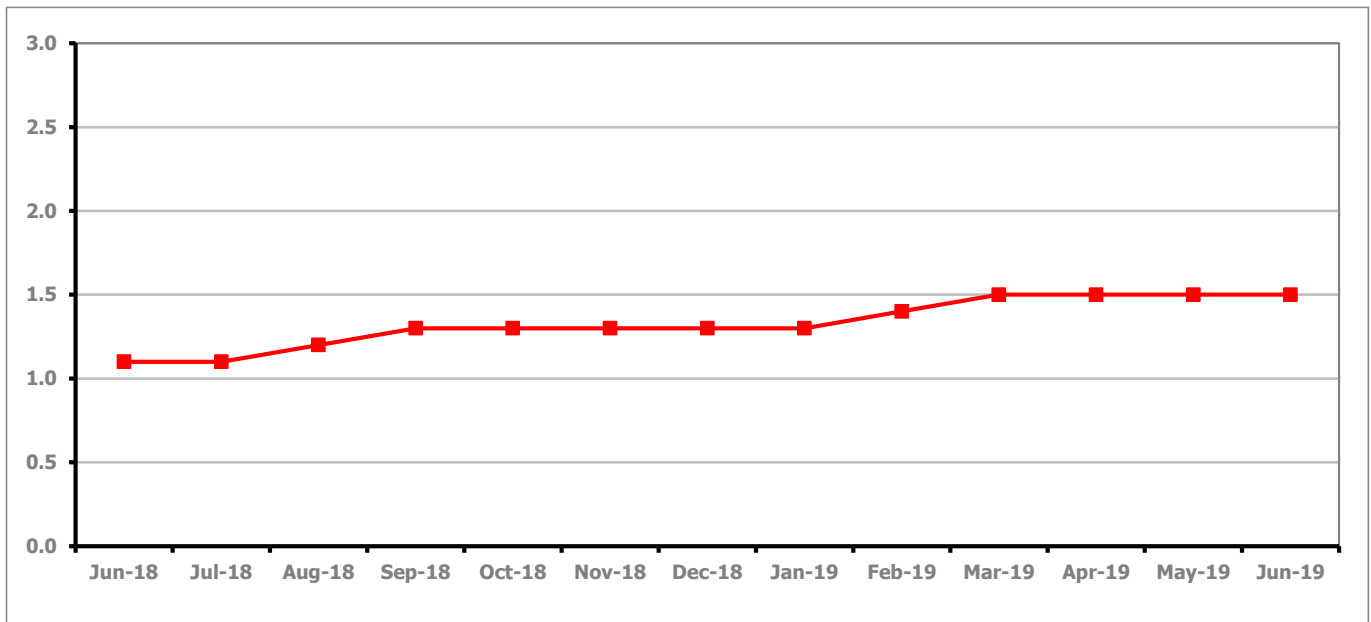


Figure 13 shows the claimant rate for Tewkesbury Borough remained the same as last month at 1.5%.

Figure 14: Claimant rates across Tewkesbury Borough wards - June 2019

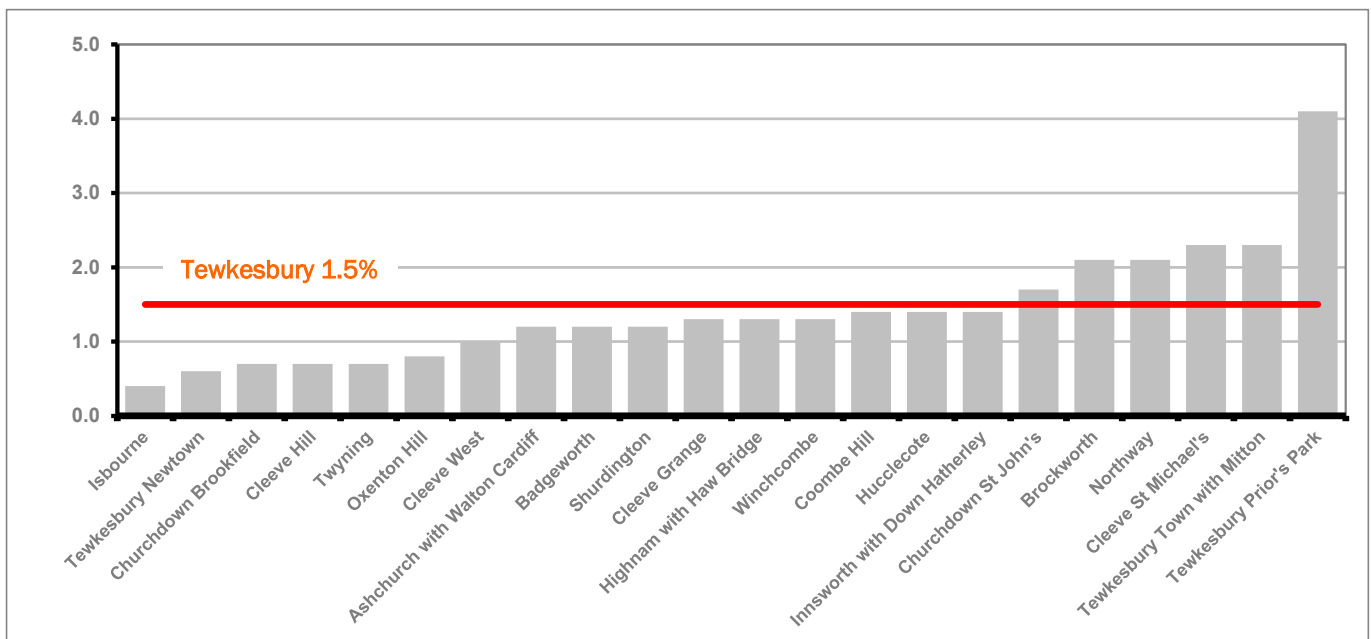


Figure 14 shows the claimant rates in Tewkesbury Borough wards. The red line represents the average claimant rate across the District of 1.5%. Six wards are above the average.

PART 4: LOCAL AUTHORITY AND DISTRICT ANALYSIS

4.6 Tewkesbury Borough continued...

Table 10: Analysis of Claimant Count at Tewkesbury Borough level - June 2019

District	Ward	Rate	Rank*
Tewkesbury	Isbourne	0.4	2
Tewkesbury	Tewkesbury Newtown	0.6	7
Tewkesbury	Churchdown Brookfield	0.7	14
Tewkesbury	Cleeve Hill	0.7	14
Tewkesbury	Twynning	0.7	14
Tewkesbury	Oxenton Hill	0.8	22
Tewkesbury	Cleeve West	1.0	40
Tewkesbury	Ashchurch with Walton Cardiff	1.2	63
Tewkesbury	Badgeworth	1.2	63
Tewkesbury	Shurdington	1.2	63
Tewkesbury	Cleeve Grange	1.3	74
Tewkesbury	Highnam with Haw Bridge	1.3	74
Tewkesbury	Winchcombe	1.3	74
Tewkesbury	Coombe Hill	1.4	83
Tewkesbury	Hucclecote	1.4	83
Tewkesbury	Innsworth with Down Hatherley	1.4	83
Tewkesbury	Churchdown St John's	1.7	101
Tewkesbury	Brockworth	2.1	114
Tewkesbury	Northway	2.1	114
Tewkesbury	Cleeve St Michael's	2.3	119
Tewkesbury	Tewkesbury Town with Mitton	2.3	119
Tewkesbury	Tewkesbury Prior's Park	4.1	139

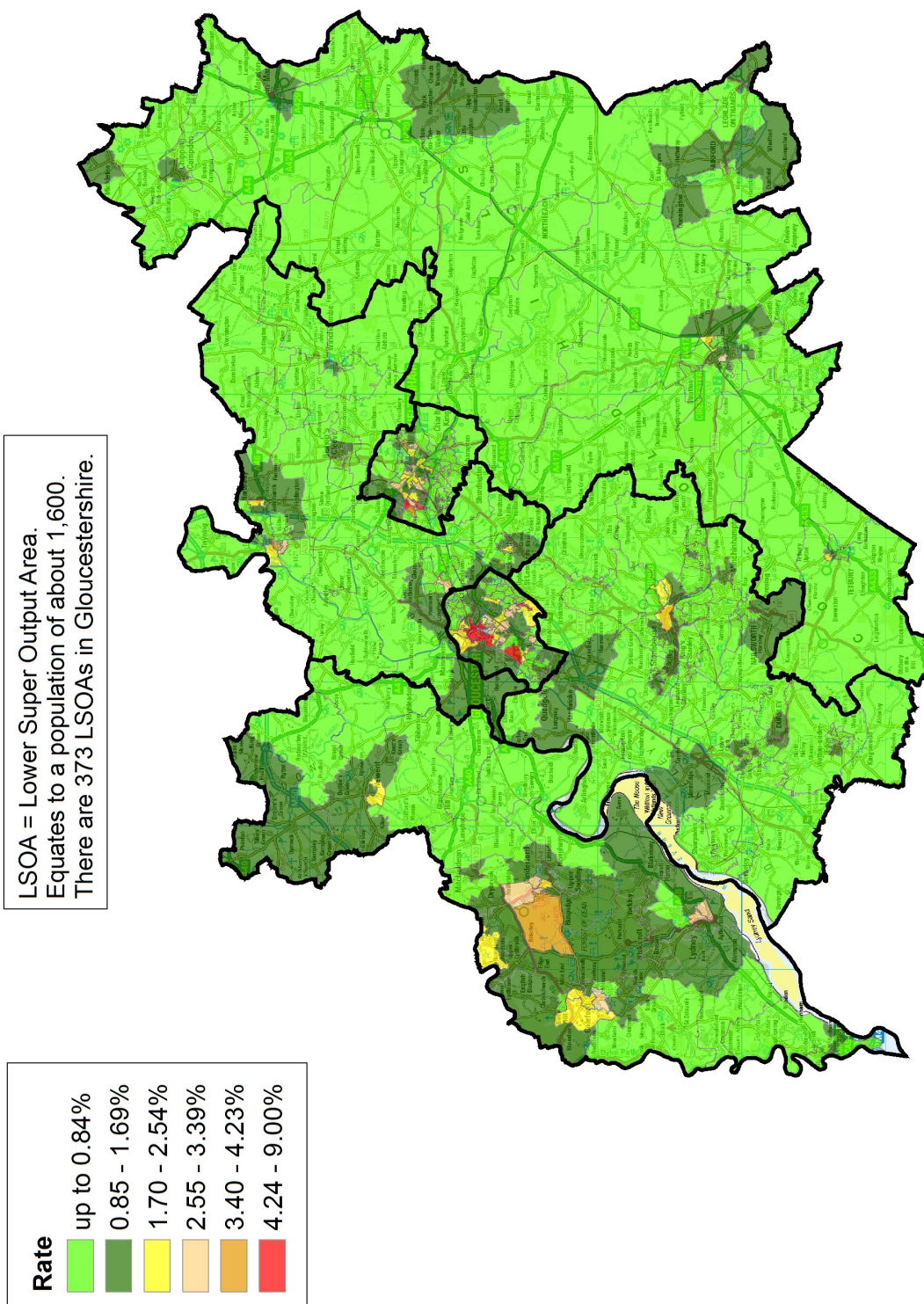
	lowest 10% of county
	first quartile of county
	second quartile of county
	third quartile of county
	fourth quartile of county
	highest 10% of county

* 1 = "best" and 146 = "worst"

Table 10 shows overall claimant rates for Tewkesbury Borough wards and their position relative to all wards in Gloucestershire.

PART 5: MAP SHOWING DISTRIBUTION OF CLAIMANT RATE ACROSS GLOUCESTERSHIRE

Claimant Count Rate by LSOA in Gloucestershire, June 2019

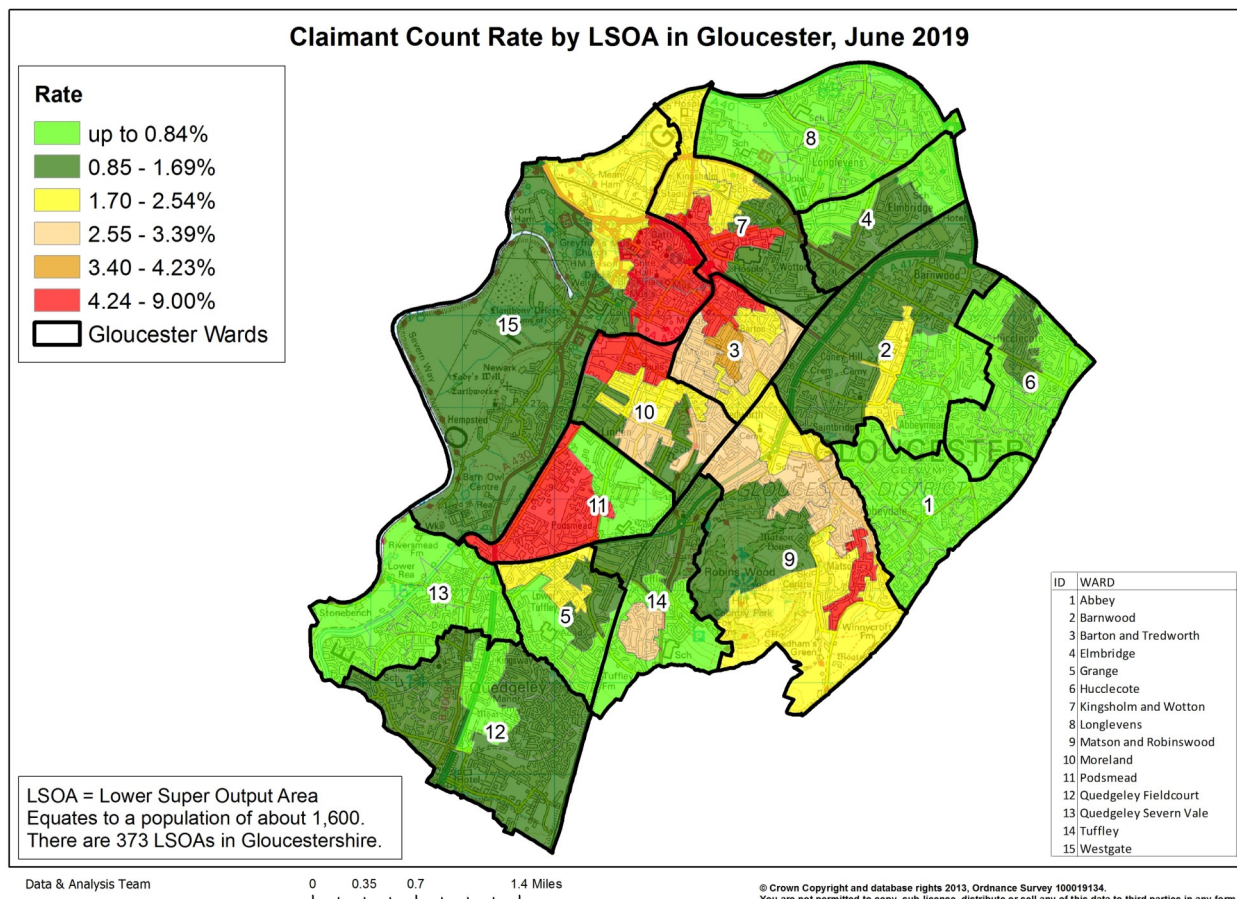
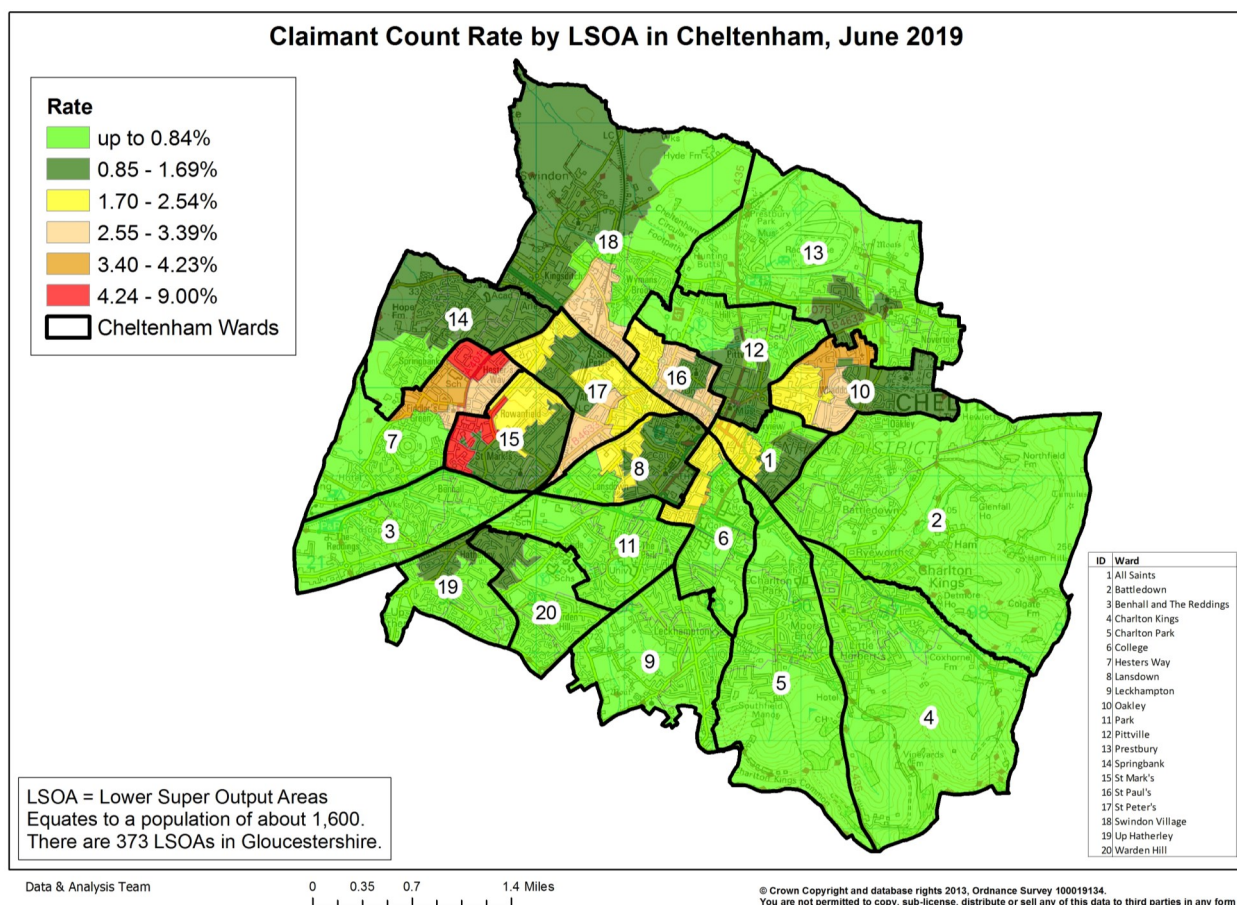


Data & Analysis Team

0 2.75 5.5 11 Miles

© Crown Copyright and database rights 2013, Ordnance Survey 100019134.
You are not permitted to copy, sub-license, distribute or sell any of this data to third parties in any form

PART 5: MAP SHOWING DISTRIBUTION OF CLAIMANT RATE ACROSS GLOUCESTERSHIRE



PART 6: YOUTH UNEMPLOYMENT(18-24 year olds)

Youth Claimant Rate and Claimant Count

Figure 15: Claimant Count for Gloucestershire over the past year

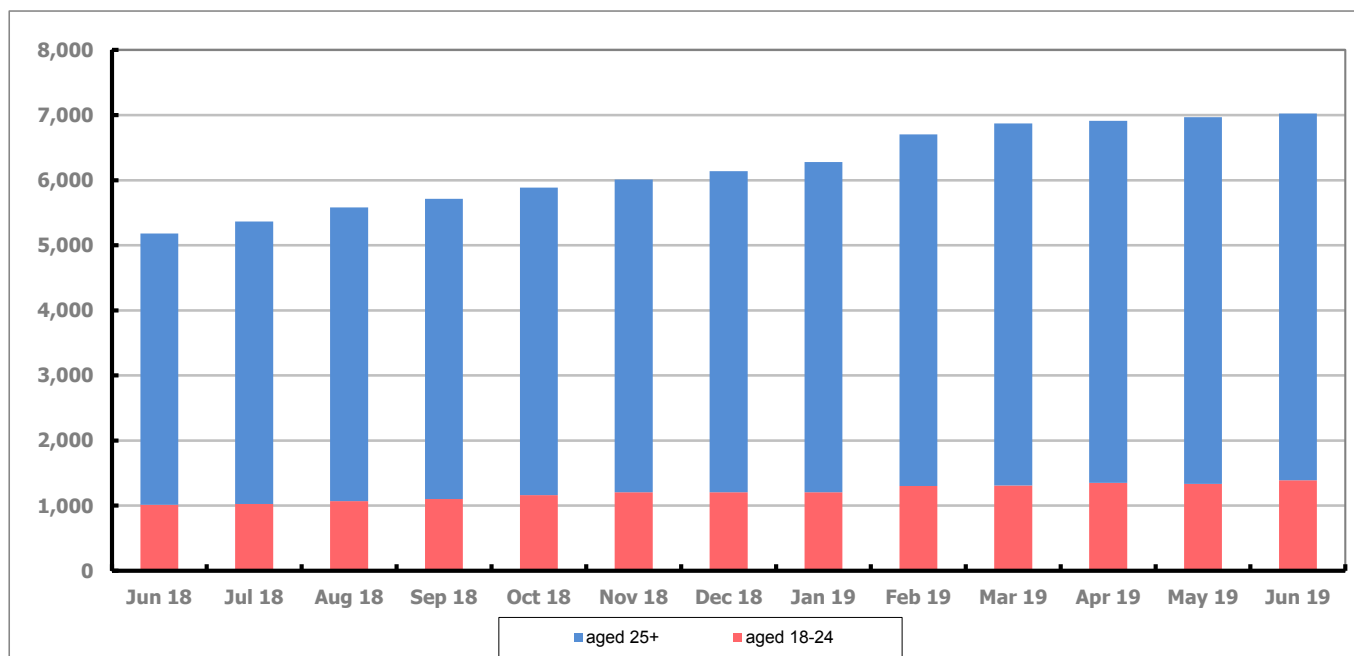


Figure 15 shows that in June 2019, 1,390 people aged 18-24 were claiming Job Seekers Allowance and Universal Credit who were not in work in Gloucestershire, this represents 19.7% of total working age claimants.

PART 7: YOUNG PEOPLE NOT IN EDUCATION, EMPLOYMENT OR TRAINING (NEET) IN GLOUCESTERSHIRE

Data provided by Gloucestershire Youth Support Team on the situation of young people (16-18) in Gloucestershire who are not in education, employment or formal training.

Gloucestershire Youth Support Team is required to report performance with the 16-18 age range against nationally defined criteria for counting the NEET group. The NEET group includes young people actively seeking education, employment or training as well as those young people who are either not yet ready or who are unable to access these opportunities because of their personal circumstances. The figures quoted below include young people in both of these categories.

Summary

At the end of June 2019 there were 329 young people aged 16-18 not in education, employment or training in Gloucestershire and this figure translates into an adjusted (*) 16-18 NEET population of 2.50%. The total number of NEET young people decreased by 14 in June 2019 compared to May 2019, five districts saw a decrease in their figures and one district saw an increase in their figure.

Total NEET Group by District Area

June 2019 NEET data

	Cheltenham	Cotswold	Forest	Gloucester	Stroud	Tewkesbury	Total
Total NEET	69	25	45	106	43	41	329
Cohort	2310	1837	1782	3245	2754	1927	13855
% NEET	2.99	1.36	2.53	3.27	1.56	2.13	2.50*

If you would like to receive any further information on Gloucestershire's NEET strategy then please contact Lynne.Speak@Prospects.co.uk or telephone 07900 391182.

(*) Adjustment includes a proportion of young people aged 16-18 whose outcomes are not known to Gloucestershire Youth Support Team.