

Unemployment Bulletin

Issue 12 July 2009

Contents

Part 1: Summary

A summary of unemployment data at district, County, regional and national level

1

Part 2: County

Unemployment figures for the County compared to the South West and the rest of the UK

3

Part 3: Districts

A comparative break down of unemployment figures by district

4

Part 4: Wards

Further breakdown of unemployment figures by ward:

Cheltenham

6

Cotswolds

8

Forest of Dean

10

Gloucester

12

Stroud

14

Tewkesbury

16

Part 5: Map

Distribution of claimant rate across Gloucestershire

18

Part 6: Young People

Data about Young People Not in Education, Employment or Training (NEET)

20

INTRODUCTION

The Unemployment Bulletin provides a monthly update on unemployment data for Gloucestershire, the South West region and the United Kingdom. It is produced by the Economic section of the County Council Chief Executive's Support Unit Research Team. The data is sourced from the Office for National Statistics via Nomis (www.nomis.co.uk).

The claimant count measures the number of people claiming unemployment-related benefit (currently Job Seeker's allowance). The claimant rate is the number of claimants as a proportion of the working age population.

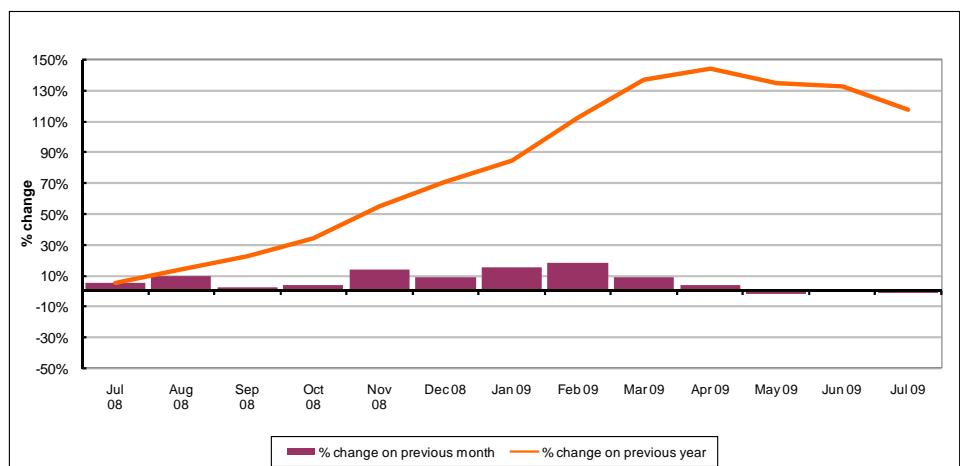
PART 1: SUMMARY

The claimant rate in Gloucestershire was 3.5% in July 2009. This was a decrease of 0.1% on the June 2009 figure. The rate has decreased from last month. The UK rate increased to 4.2% between June and July 2009 with the South West rate remaining the same as last month at 3.0%. Gloucestershire's rate remains above the South West average of 3.0%, but 0.7% lower than the UK average of 4.2%.

The claimant count in Gloucestershire in July 2009 decreased by 169 people. The amount of people claiming in July 2009 was 1.3% lower than the number in June 2009 compared to no change in the South West and a 1.3% increase for the UK.

The claimant count in Gloucestershire has decreased. The count was 118% higher in July 2009 than at the same point in the previous year as shown in the graph below.

Gloucestershire claimants - Month on Month and Year on Year change: July 2008 to July 2009



Source: ONS Crown Copyright Reserved

Produced by:

The Research Team (Economics)
Chief Executive Support Unit
Gloucestershire County Council
August 2009

DISTRICTS AT A GLANCE

At a glance unemployment information grouped by district. Includes:

Claim count: Total number of people claiming Job Seekers Allowance in July 2009

Compared to last month: How much larger/smaller July's claim count is compared to June, expressed as a %

Claimant rate: The % of working population claiming Job Seekers Allowance in July 2009

Highest claiming ward: The ward with the highest claim count in that district and the rate

CHELTEMHAM BOROUGH

Claim count:	2,883
Compared to last month:	- 0.2%
Claimant rate:	4.1%
Highest claiming ward	Hesters Way (9.0%)

GLOUCESTER CITY

Claim count:	3,305
Compared to last month:	- 1.4%
Claimant rate:	4.6%
Highest claiming ward	Westgate (8.7%)

COTSWOLD DISTRICT

Claim count:	1,040
Compared to last month:	- 0.6%
Claimant rate:	2.1%
Highest claiming ward	Cirencester Watermoor (4.2%)

STROUD DISTRICT

Claim count:	2,037
Compared to last month:	- 1.2%
Claimant rate:	3.1%
Highest claiming ward	Central (7.1%)

FOREST OF DEAN

Claim count:	1,736
Compared to last month:	- 2.4%
Claimant rate:	3.6%
Highest claiming ward	Cinderford West (5.7%)

TEWKESBURY BOROUGH

Claim count:	1,452
Compared to last month:	- 2.8%
Claimant rate:	3.1%
Highest claiming ward	Tewkesbury Priors Park (6.7%)

YOUNG PEOPLE NOT IN EDUCATION, EMPLOYMENT OR TRAINING (NEET)

As at the end of July 2009 there were 599 young people aged 16-18 not in education, employment or training in Gloucestershire and this figure translates into an adjusted (*) 16-18 NEET population of 4.4%.

PART 2: UK, SW AND GLOUCESTERSHIRE INDICATORS

The unemployment situation in Gloucestershire compared to the South West and the UK.

Claimant Rate

Figure 1: Claimant Rate for Gloucestershire, the South West and UK over the past year

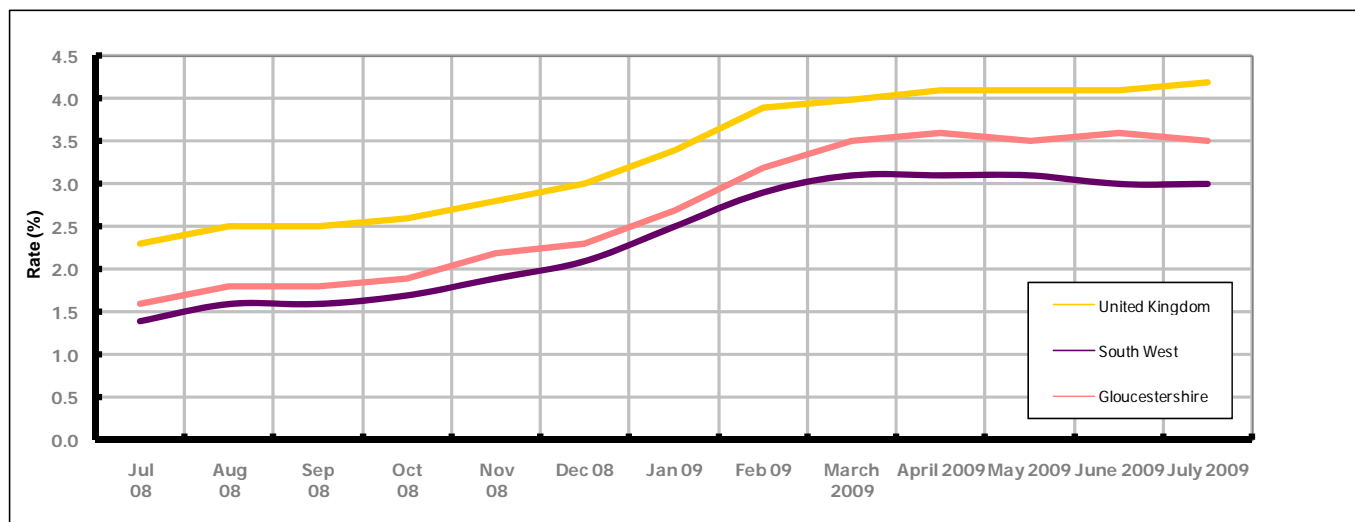


Figure 1 shows the claimant rate for Gloucestershire at 3.5% in July 2009. The rate has remained slightly higher than the South West average over the past year, but persistently lower by approximately 0.7% against the UK average during the same period. July 2009 represented a 0.1% decrease on June 2009.

Claimant Count

Table 1: Analysis of UK, South West and Gloucestershire Claimant Counts

Area	Claimant Count in July 2009	% change on June 2009	Average % increase over the last six months	Consecutive months increasing
UK	1,573,139	+1.3%	+1.3%	1
South West	94,346	0.0%	+0.5%	0
Gloucestershire	12,453	-1.3%	+1.7%	0

Table 1 shows that in July 2009, the number of claimants in Gloucestershire was 1.3% lower than the number in June 2009.

The average growth in claimants in Gloucestershire for the six months to July 2009 was 1.7%. This is 0.4% higher than the UK average and 1.2% higher than the South West region.

PART 3: LOCAL AUTHORITY DISTRICT ANALYSIS

Claimant Rate and Claimant Count

Figure 2: Claimant Rate (%) across Gloucestershire - July 2009

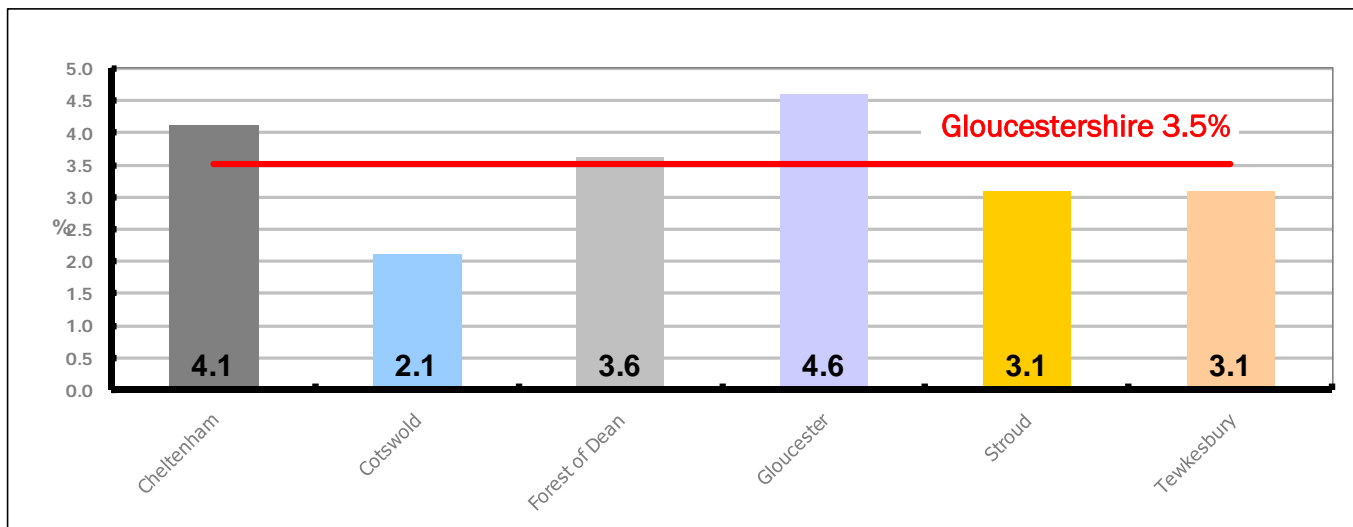


Figure 2 shows the claimant rate for July 2009 in Gloucestershire. Between June 2009 and July 2009, Cheltenham, Cotswold, Forest of Dean and Stroud districts remained the same while Gloucester and Tewkesbury districts experienced a decrease.

Figure 3: Total claimants over the past year across Gloucestershire Districts

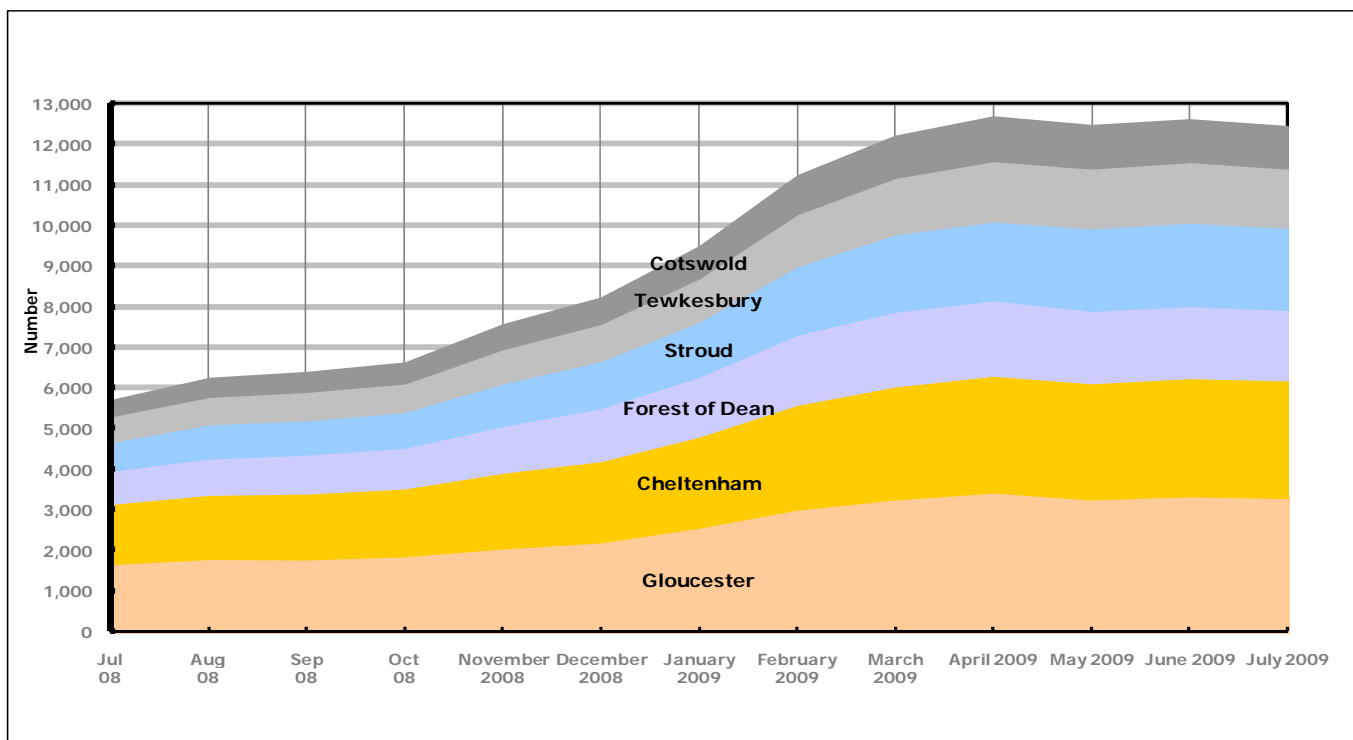


Figure 3 shows the overall claimant count by district for Gloucestershire over the past year. It demonstrates a noticeable levelling off since April 2009.

Table 2: Analysis of Gloucestershire and District Claimant Counts

Total	July 09 Number	July 09 Rate	June 09 Number	June 09 Rate	Monthly change	% monthly change	Monthly change of rate
Gloucestershire	12,453	3.5	12,622	3.6	-169	-1.3%	-0.1
Cheltenham	2,883	4.1	2,889	4.1	-6	-0.2%	0.0
Cotswold	1,040	2.1	1,046	2.1	-6	-0.6%	0.0
Forest of Dean	1,736	3.6	1,779	3.6	-43	-2.4%	0.0
Gloucester	3,305	4.6	3,352	4.7	-47	-1.4%	-0.1
Stroud	2,037	3.1	2,062	3.1	-25	-1.2%	0.0
Tewkesbury	1,452	3.1	1,494	3.2	-42	-2.8%	-0.1

Table 2 shows the change in the claimant count in July 2009 compared to June 2009. All six districts experienced a decrease.

Table 3: Analysis of Male Gloucestershire and District Claimant Counts

Male	July 09 Number	July 09 Rate	June 09 Number	June 09 Rate	Monthly change	% monthly change	Monthly change of rate
Gloucestershire	9,217	5.0	9,424	5.1	-207	-2.2%	-0.1
Cheltenham	2,143	5.8	2,186	5.9	-43	-2.0%	-0.1
Cotswold	750	2.9	759	3.0	-9	-1.2%	-0.1
Forest of Dean	1,269	4.9	1,304	5.1	-35	-2.7%	-0.2
Gloucester	2,511	6.8	2,578	7.0	-67	-2.6%	-0.2
Stroud	1,494	4.3	1,526	4.4	-32	-2.1%	-0.1
Tewkesbury	1,050	4.3	1,071	4.3	-21	-2.0%	0.0

Table 3 shows the change in the male claimant count in July 2009 compared to June 2009. All six districts experienced a decrease.

Table 4: Analysis of Female Gloucestershire and District Claimant Counts

Female	July 09 Number	July 09 Rate	June 09 Number	June 09 Rate	Monthly change	% monthly change	Monthly change of rate
Gloucestershire	3,236	1.9	3,198	1.9	38	1.2%	0.0
Cheltenham	740	2.2	703	2.1	37	5.3%	0.1
Cotswold	290	1.3	287	1.2	3	1.0%	0.1
Forest of Dean	467	2.0	475	2.1	-8	-1.7%	-0.1
Gloucester	794	2.3	774	2.3	20	2.6%	0.0
Stroud	543	1.8	536	1.7	7	1.3%	0.1
Tewkesbury	402	1.8	423	1.9	-21	-5.0%	-0.1

Table 4 shows the change in the female claimant count in July 2009 compared to June 2009. Forest of Dean and Tewkesbury experienced a decrease with all other districts increasing.

PART 4: LOCAL AUTHORITY DISTRICT AND WARD ANALYSIS

This section covers the six districts and a comparison of their constituent wards.

4.1 Cheltenham Borough

Claimant Rate and Claimant Count

Figure 4: Cheltenham Borough claimant rate over the last year

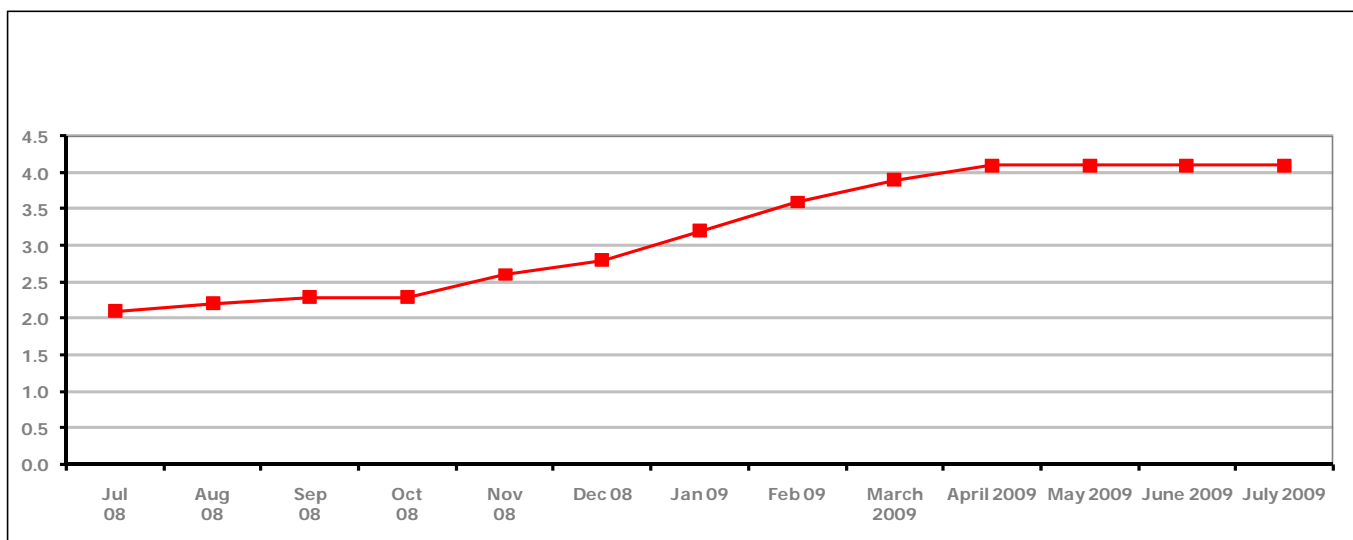


Figure 4 shows the claimant rate in Cheltenham remained the same as last month at 4.1%. It has remained this way for four months.

Figure 5: Cheltenham Borough claimants - Month on Month and Year on Year change

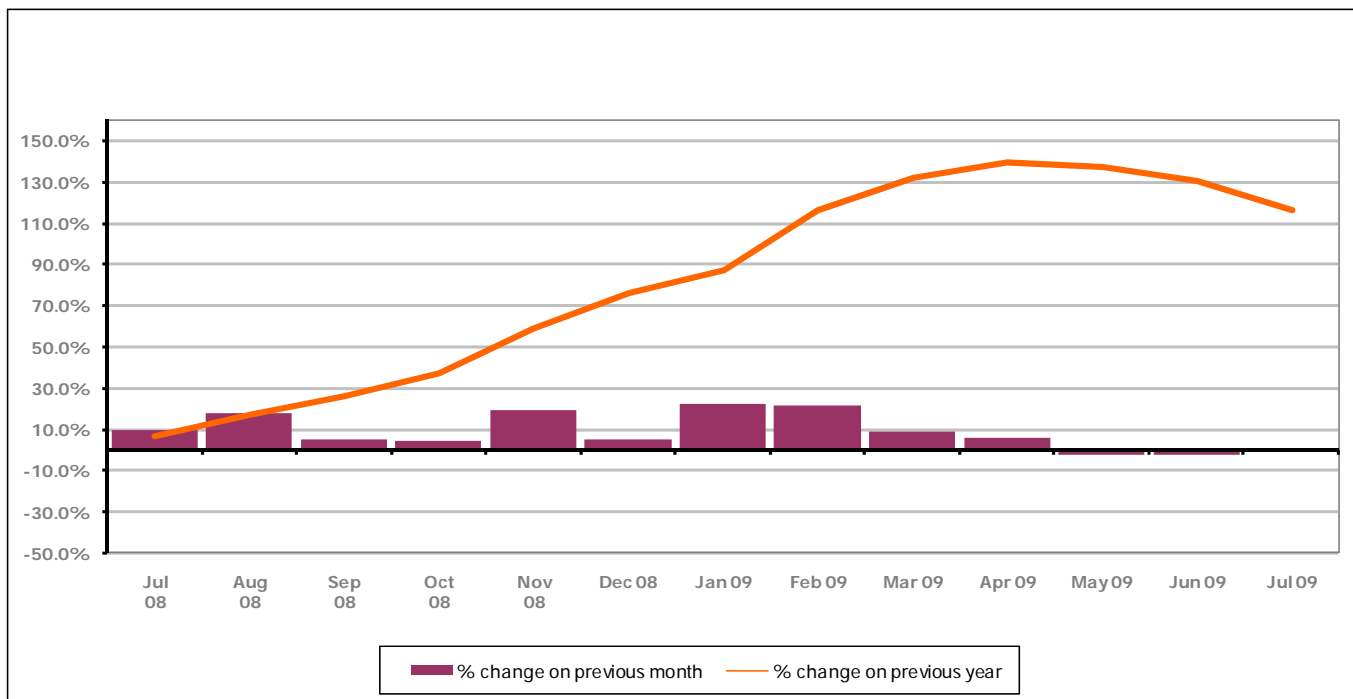


Figure 5 shows the claimant count decreased by 0.2% since last month, after continually increasing each month since July 2008. In addition, the change on the previous year has gone down in July 2009 compared to June 2009.

PART 4: LOCAL AUTHORITY DISTRICT AND WARD ANALYSIS

4.1 Cheltenham Borough continued...

Figure 6: Claimant rates across Cheltenham Borough wards - July 2009

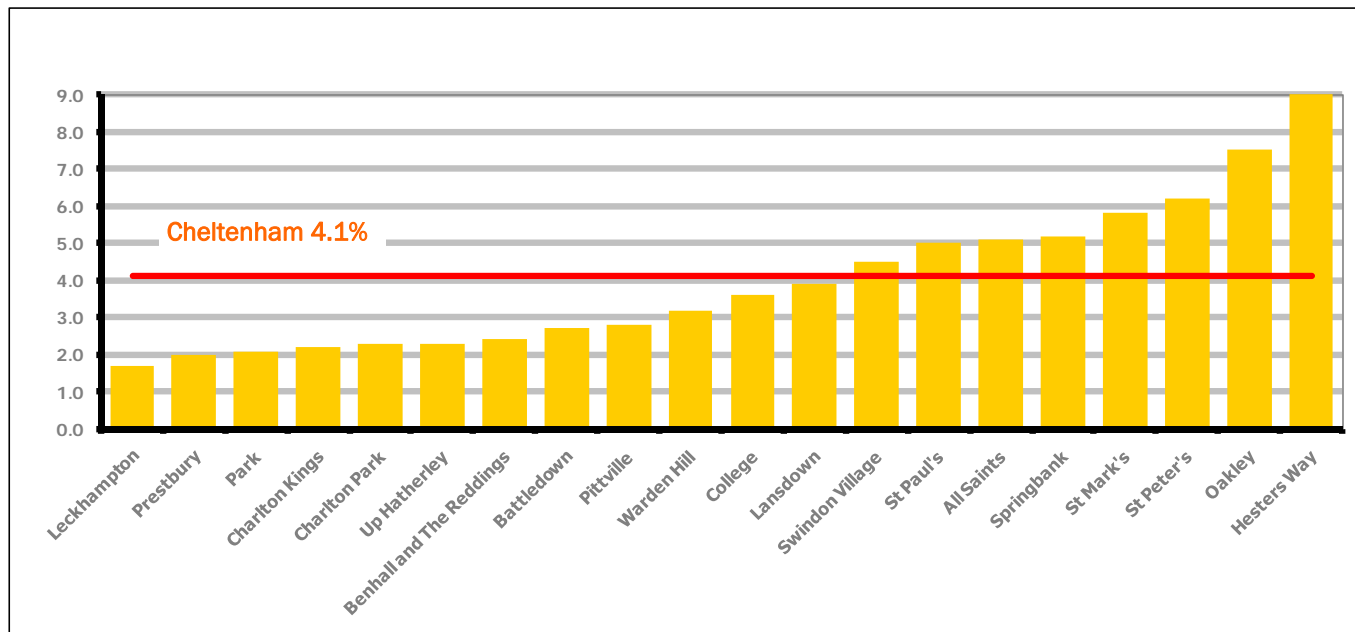
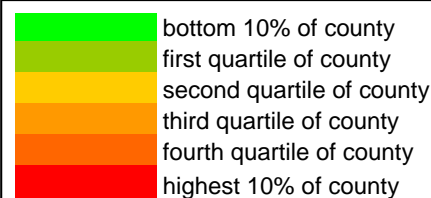


Figure 6 shows the claimant rates for Cheltenham Borough wards. The red line represents the average claimant rate across the Borough of 4.1%. Eight wards lie above the average.

Table 5: Analysis of Claimant Count at Cheltenham Borough ward level - July 2009

District	Ward	Rate	Rank*
Cheltenham	Leckhampton	1.7	14
Cheltenham	Prestbury	2.0	32
Cheltenham	Park	2.1	38
Cheltenham	Charlton Kings	2.2	46
Cheltenham	Charlton Park	2.3	53
Cheltenham	Up Hatherley	2.3	53
Cheltenham	Benhall and The Reddings	2.4	60
Cheltenham	Battledown	2.7	71
Cheltenham	Pittville	2.8	75
Cheltenham	Warden Hill	3.2	83
Cheltenham	College	3.6	94
Cheltenham	Lansdown	3.9	104
Cheltenham	Swindon Village	4.5	116
Cheltenham	St Paul's	5.0	123
Cheltenham	All Saints	5.1	124
Cheltenham	Springbank	5.2	125
Cheltenham	St Mark's	5.8	132
Cheltenham	St Peter's	6.2	133
Cheltenham	Oakley	7.5	140
Cheltenham	Hesters Way	9.0	142



* 1 = "best" and 142 = "worst"

Table 5 shows overall claimant rates for Cheltenham Borough wards and their position relative to all wards in Gloucestershire.

PART 4: LOCAL AUTHORITY DISTRICT AND WARD ANALYSIS

4.2 Cotswold District

Claimant Rate and Claimant Count

Figure 7: Cotswold District claimant rate over the last year

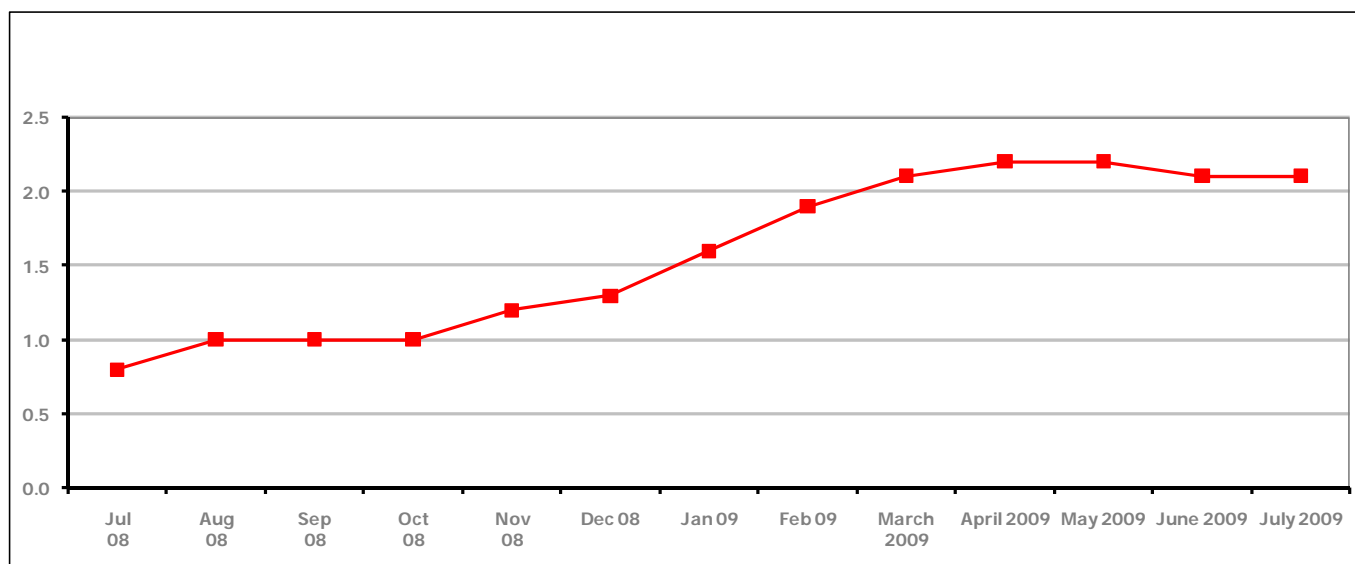


Figure 7 shows the claimant rate in Cotswold District remained the same in July 2009 at 2.1%. Prior to this the rate had been increasing since July 2008.

Figure 8: Cotswold District claimants - Month on Month and Year on Year change

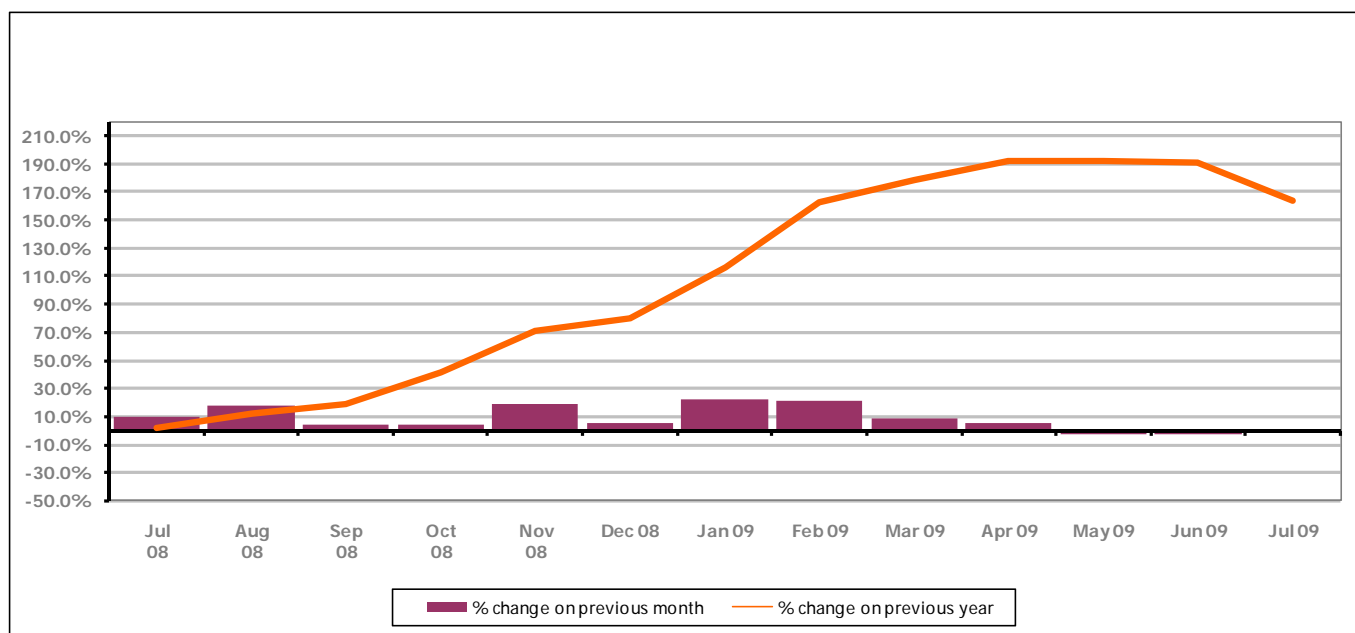


Figure 8 shows the claimant count decreased by 0.6% since June 2009 after continually increasing since July 2008. The change on the previous year has decreased in July 2009 from June 2009.

PART 4: LOCAL AUTHORITY DISTRICT AND WARD ANALYSIS

4.2 Cotswold District continued...

Figure 9: Claimant rates across Cotswold District wards - July 2009

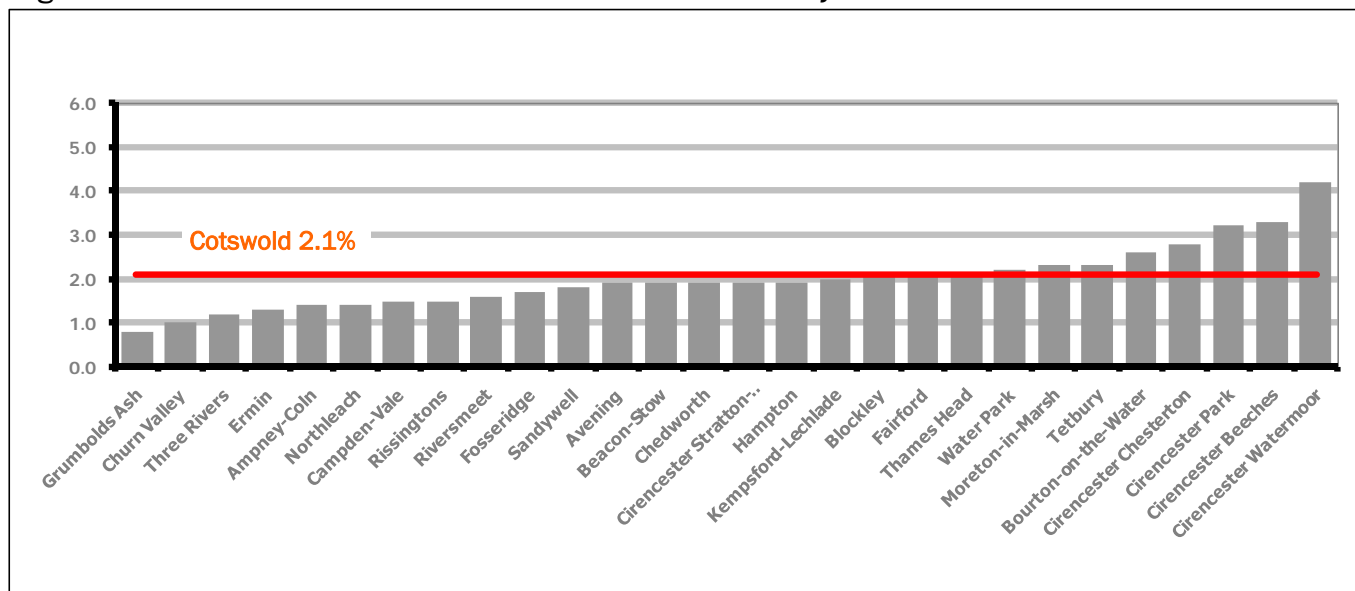
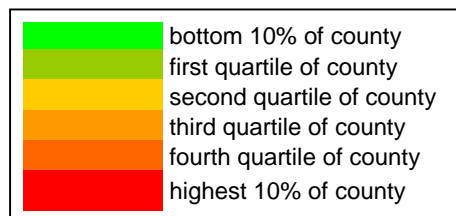


Figure 9 shows the claimant rates for Cotswold District wards. The red line represents the average claimant rate across the District of 2.1%. Eleven wards lie above the average.

Table 6: Analysis of Claimant Count at Cotswold District ward level - July 2009

District	Ward	Rate	Rank*
Cotswolds	Grumbolds Ash	0.8	1
Cotswolds	Churn Valley	1.0	4
Cotswolds	Three Rivers	1.2	5
Cotswolds	Ermin	1.3	6
Cotswolds	Ampney-Coln	1.4	8
Cotswolds	Northleach	1.4	8
Cotswolds	Campden-Vale	1.5	10
Cotswolds	Rissingtons	1.5	10
Cotswolds	Riversmeet	1.6	13
Cotswolds	Fosseridge	1.7	14
Cotswolds	Sandywell	1.8	19
Cotswolds	Avening	1.9	24
Cotswolds	Beacon-Stow	1.9	24
Cotswolds	Chedworth	1.9	24
Cotswolds	Cirencester Stratton-Whiteway	1.9	24
Cotswolds	Hampton	1.9	24
Cotswolds	Kempsford-Lechlade	2.0	32
Cotswolds	Blockley	2.1	38
Cotswolds	Fairford	2.1	38
Cotswolds	Thames Head	2.1	38
Cotswolds	Water Park	2.2	46
Cotswolds	Moreton-in-Marsh	2.3	53
Cotswolds	Tetbury	2.3	53
Cotswolds	Bourton-on-the-Water	2.6	70
Cotswolds	Cirencester Chesterton	2.8	75
Cotswolds	Cirencester Park	3.2	83
Cotswolds	Cirencester Beeches	3.3	88
Cotswolds	Cirencester Watermoor	4.2	111



* 1 = "best" and 142 = "worst"

Table 6 shows overall claimant rates for Cotswold District wards and their position relative to all wards in Gloucestershire.

PART 4: LOCAL AUTHORITY DISTRICT AND WARD ANALYSIS

4.3 Forest of Dean District

Claimant Rate and Claimant Count

Figure 10: Forest of Dean District claimant rate over the last year

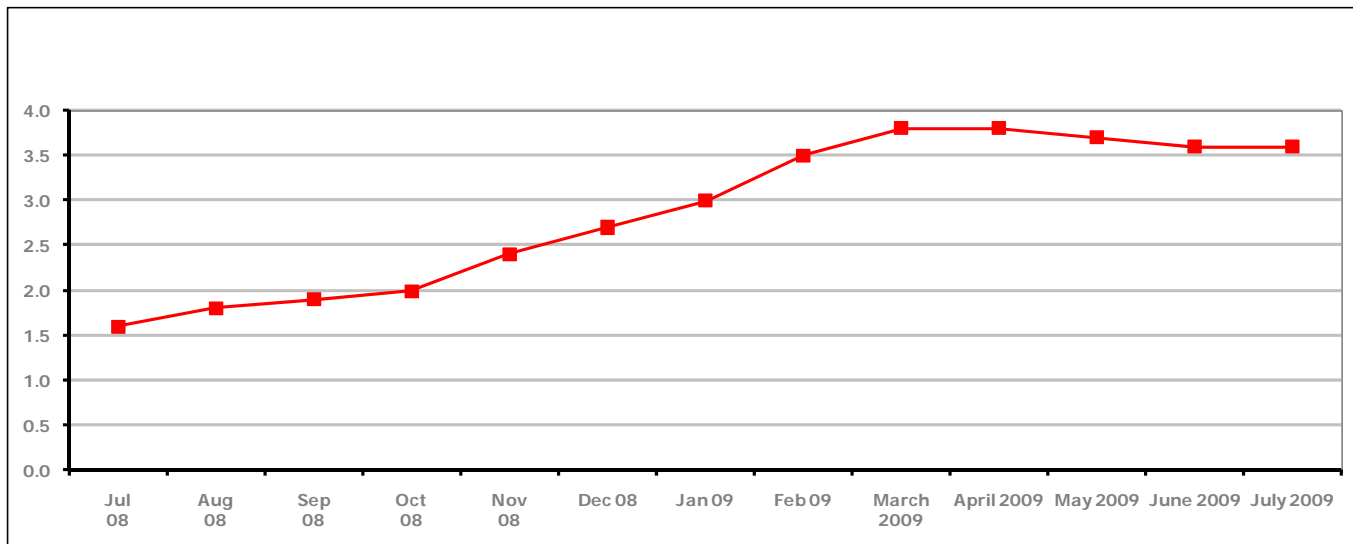


Figure 10 shows the claimant rate in the Forest of Dean remained the same in July 2009 at 3.6%. The rate has been declining since April 2009.

Figure 11: Forest of Dean District claimants - Month on Month and Year on Year change

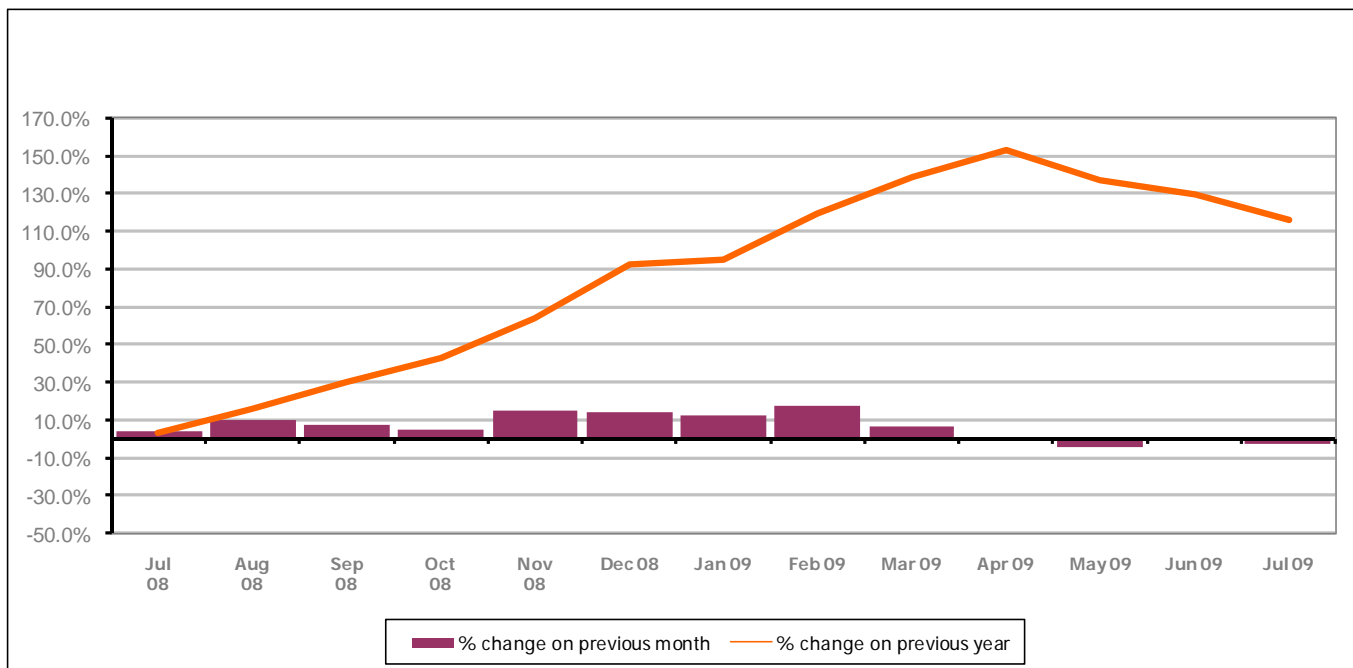


Figure 11 shows the claimant count decreased by 2.4% since the previous month. The change on the previous year has decreased between July 2009 and June 2009.

PART 4: LOCAL AUTHORITY DISTRICT AND WARD ANALYSIS

4.3 Forest of Dean District continued...

Figure 12: Claimant rates across Forest of Dean District wards - July 2009

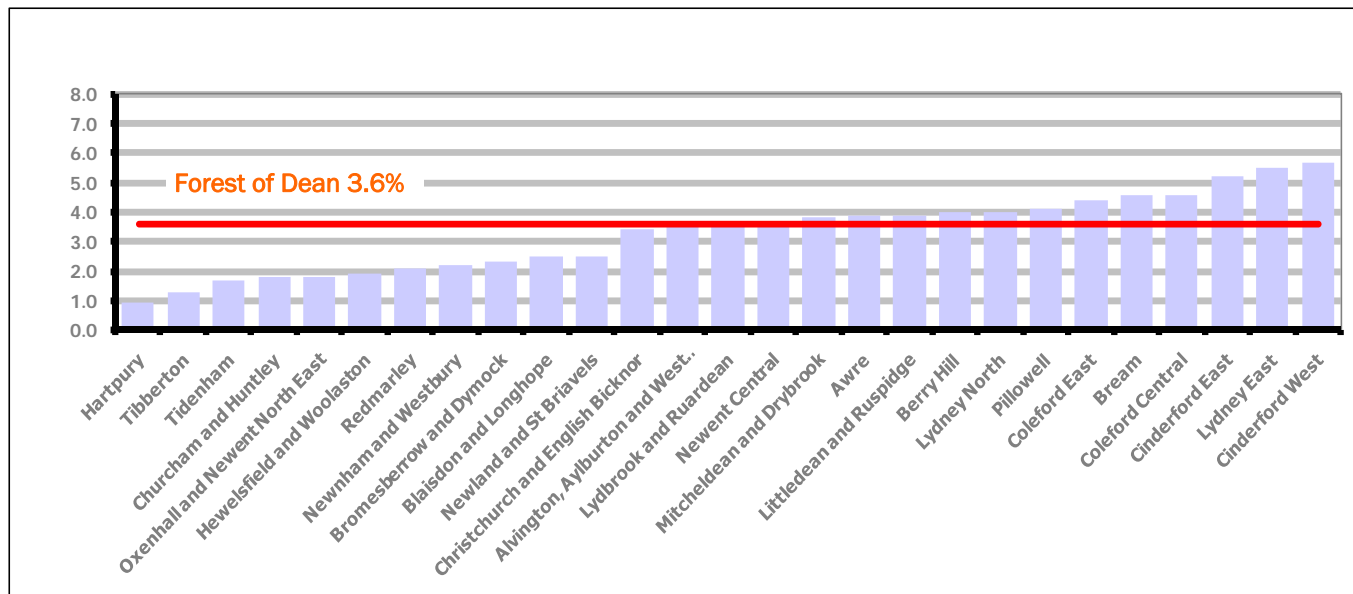
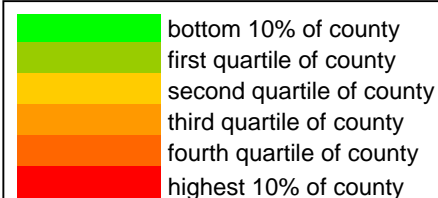


Figure 12 shows the claimant rates for Forest of Dean District wards. The red line represents the average claimant rate across the District of 3.6%. Twelve wards lie above the average.

Table 7: Analysis of Claimant Count at Forest of Dean District ward level - July 2009

District	Ward	Rate	Rank*
Forest	Hartpury	0.9	2
Forest	Tibberton	1.3	6
Forest	Tidenham	1.7	14
Forest	Churcham and Huntley	1.8	19
Forest	Oxenhall and Newent North East	1.8	19
Forest	Hewelsfield and Woolaston	1.9	24
Forest	Redmarley	2.1	38
Forest	Newnham and Westbury	2.2	46
Forest	Bromesberrow and Dymock	2.3	53
Forest	Blaisdon and Longhope	2.5	64
Forest	Newland and St Briavels	2.5	64
Forest	Christchurch and English Bicknor	3.4	90
Forest	Alvington, Aylburton and West Lydney	3.6	94
Forest	Lydbrook and Ruardean	3.6	94
Forest	Newent Central	3.6	94
Forest	Mitcheldean and Drybrook	3.8	101
Forest	Awre	3.9	104
Forest	Littledean and Ruspidge	3.9	104
Forest	Berry Hill	4.0	107
Forest	Lydney North	4.0	107
Forest	Pillowell	4.1	109
Forest	Coleford East	4.4	115
Forest	Bream	4.6	117
Forest	Coleford Central	4.6	117
Forest	Cinderford East	5.2	125
Forest	Lydney East	5.5	130
Forest	Cinderford West	5.7	131



* 1 = "best" and 142 = "worst"

Table 7 shows overall claimant rates for the Forest of Dean District wards and their position relative to all wards in Gloucestershire.

PART 4: LOCAL AUTHORITY DISTRICT AND WARD ANALYSIS

4.4 Gloucester City

Claimant Rate and Claimant Count

Figure 13: Gloucester City claimant rate over the last year

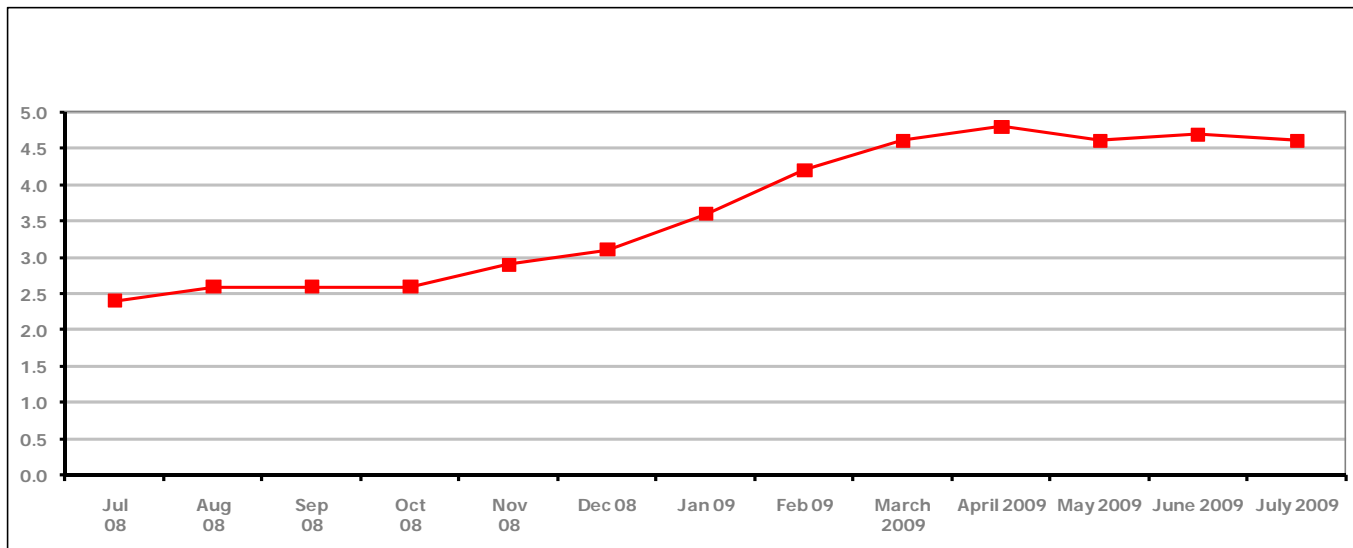


Figure 13 shows the claimant rate for Gloucester City decreased in July 2009 to 4.6%. The rate has shown an overall decline since April 2009.

Figure 14: Gloucester City claimants - Month on Month and Year on Year change

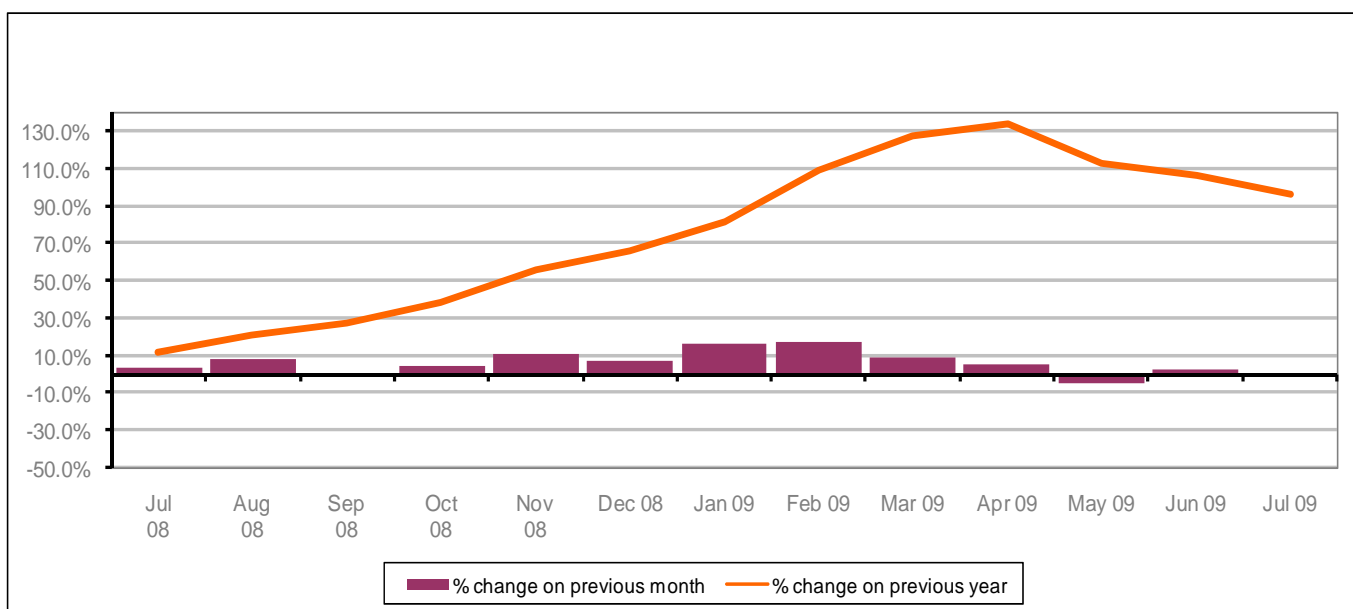


Figure 14 shows the monthly claimant count decreased by 1.4% since June 2009. Before this the rate continually increased since the previous July. The change on the previous year has decreased between June 2009 and July 2009.

PART 4: LOCAL AUTHORITY DISTRICT AND WARD ANALYSIS

4.4 Gloucester City continued...

Figure 15: Claimant rates across Gloucester City wards - July 2009

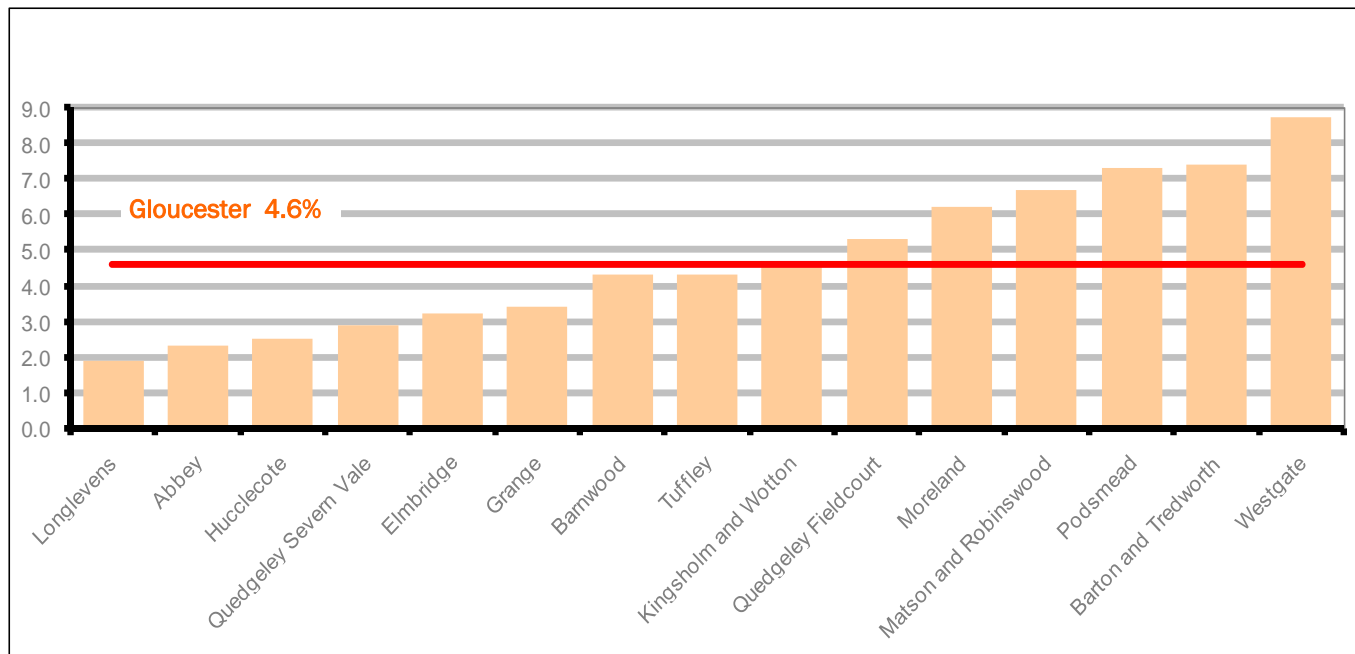


Figure 15 shows the claimant rates for Gloucester City district wards. The red line represents the average claimant rate across the City of 4.6%. Six wards lie above the average.

Table 8: Analysis of Claimant Count at Gloucester City ward level - July 2009

District	Ward	Rate	Rank*
Gloucester	Longlevens	1.9	24
Gloucester	Abbey	2.3	53
Gloucester	Hucclecote	2.5	64
Gloucester	Quedgeley Severn Vale	2.9	77
Gloucester	Elmbridge	3.2	83
Gloucester	Grange	3.4	90
Gloucester	Barnwood	4.3	113
Gloucester	Tuffley	4.3	113
Gloucester	Kingsholm and Wotton	4.7	119
Gloucester	Quedgeley Fieldcourt	5.3	127
Gloucester	Moreland	6.2	133
Gloucester	Matson and Robinswood	6.7	135
Gloucester	Podsmead	7.3	138
Gloucester	Barton and Tredworth	7.4	139
Gloucester	Westgate	8.7	141

	bottom 10% of county
	first quartile of county
	second quartile of county
	third quartile of county
	fourth quartile of county
	highest 10% of county

* 1 = "best" and 142 = "worst"

Table 8 shows overall claimant rates for Gloucester City wards and their position relative to all wards in Gloucestershire.

PART 4: LOCAL AUTHORITY DISTRICT AND WARD ANALYSIS

4.5 Stroud District

Claimant Rate and Claimant Count

Figure 16: Stroud District claimant rate over the last year

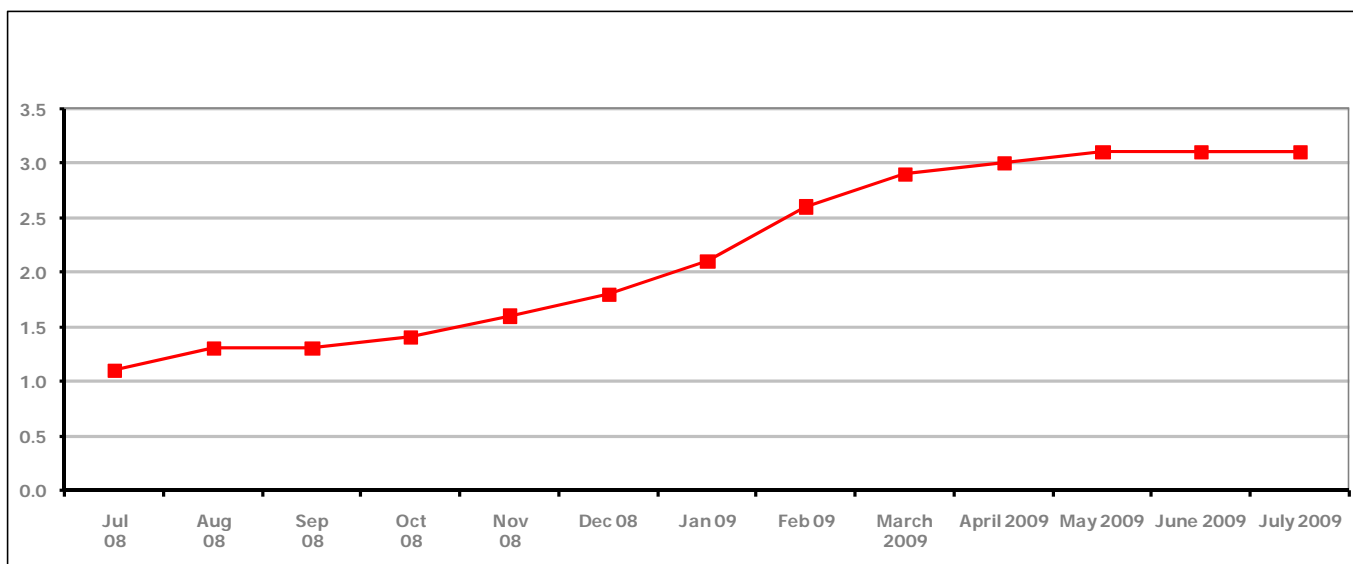


Figure 16 shows the claimant rate for Stroud District remained the same at 3.1%, the highest it has been for over two years.

Figure 17: Stroud District claimants - Month on Month and Year on Year change

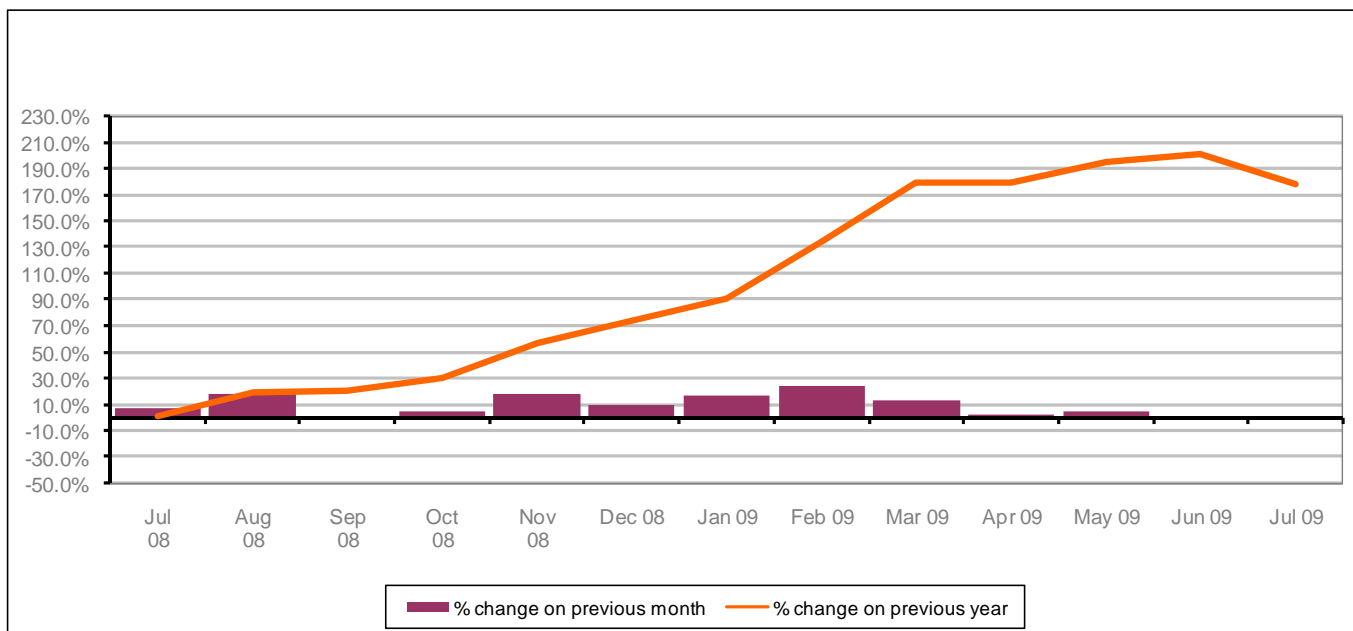


Figure 14 shows the monthly claimant count declined by 1.2% since June 2009. The change on the previous year has decreased between June 2009 and July 2009.

PART 4: LOCAL AUTHORITY AND DISTRICT ANALYSIS

4.5 Stroud District continued...

Figure 18: Claimant rates across Stroud District wards - July 2009

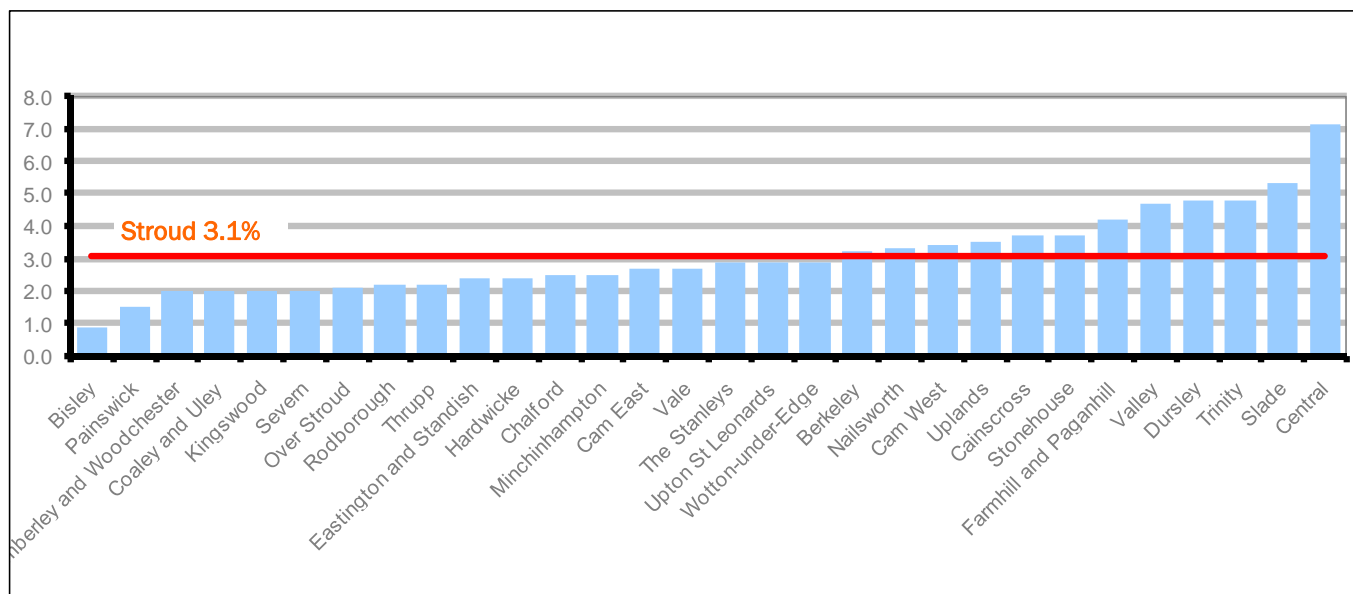
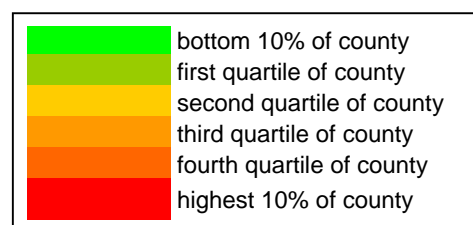


Figure 18 shows the claimant rates in Stroud District wards. The red line represents the average claimant rate across the District of 3.1% and twelve wards are above the average.

Table 9: Analysis of Claimant Count at Stroud District ward level - July 2009

District	Ward	Rate	Rank*
Stroud	Bisley	0.9	2
Stroud	Painswick	1.5	10
Stroud	Amberley and Woodchester	2.0	32
Stroud	Coaley and Uley	2.0	32
Stroud	Kingswood	2.0	32
Stroud	Severn	2.0	32
Stroud	Over Stroud	2.1	38
Stroud	Rodborough	2.2	46
Stroud	Thrupp	2.2	46
Stroud	Eastington and Standish	2.4	60
Stroud	Hardwicke	2.4	60
Stroud	Chalford	2.5	64
Stroud	Minchinhampton	2.5	64
Stroud	Cam East	2.7	71
Stroud	Vale	2.7	71
Stroud	The Stanleys	2.9	77
Stroud	Upton St Leonards	2.9	77
Stroud	Wotton-under-Edge	2.9	77
Stroud	Berkeley	3.2	83
Stroud	Nailsworth	3.3	88
Stroud	Cam West	3.4	90
Stroud	Uplands	3.5	93
Stroud	Cainscross	3.7	99
Stroud	Stonehouse	3.7	99
Stroud	Farmhill and Paganhill	4.2	111
Stroud	Valley	4.7	119
Stroud	Dursley	4.8	121
Stroud	Trinity	4.8	121
Stroud	Slade	5.3	127
Stroud	Central	7.1	137



* 1 = "best" and 142 = "worst"

Table 9 shows overall claimant rates for Stroud District wards and their position relative to all wards in Gloucestershire.

PART 4: LOCAL AUTHORITY DISTRICT AND WARD ANALYSIS

4.6 Tewkesbury District

Claimant Rate and Claimant Count

Figure 19: Tewkesbury District claimant rate over the last year

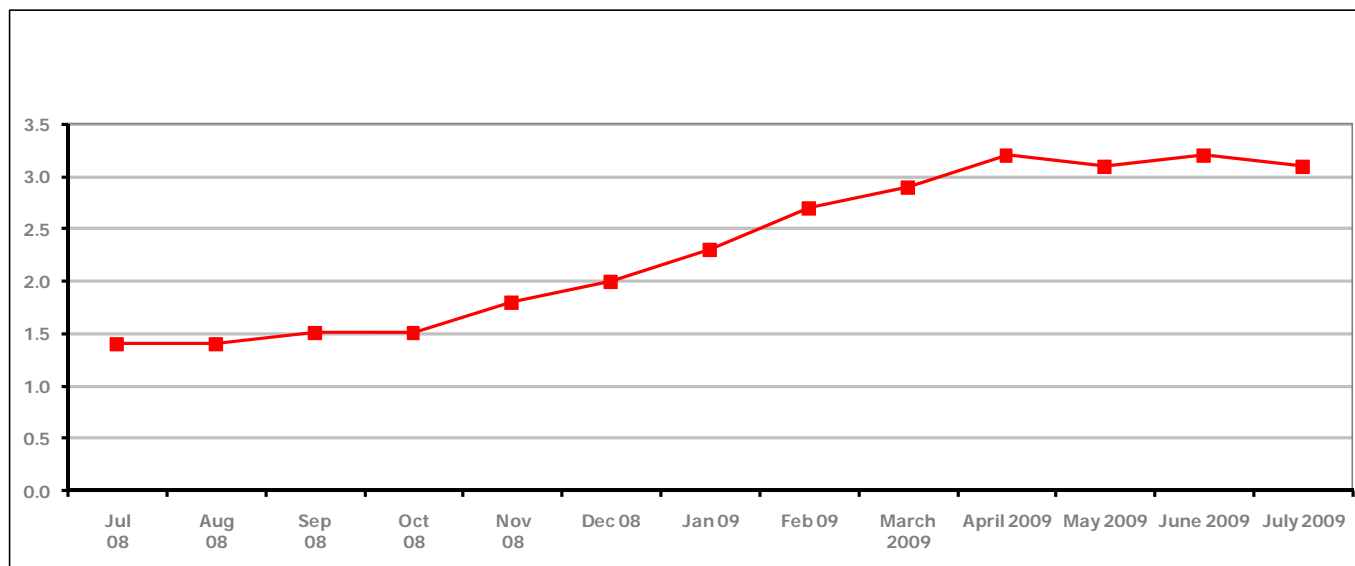


Figure 19 shows the claimant rate for Tewkesbury District decreased to 3.1% in July 2009 after an increasing last month. The rate has shown an overall decline since April 2009.

Figure 20: Tewkesbury District claimants - Month on Month and Year on Year change

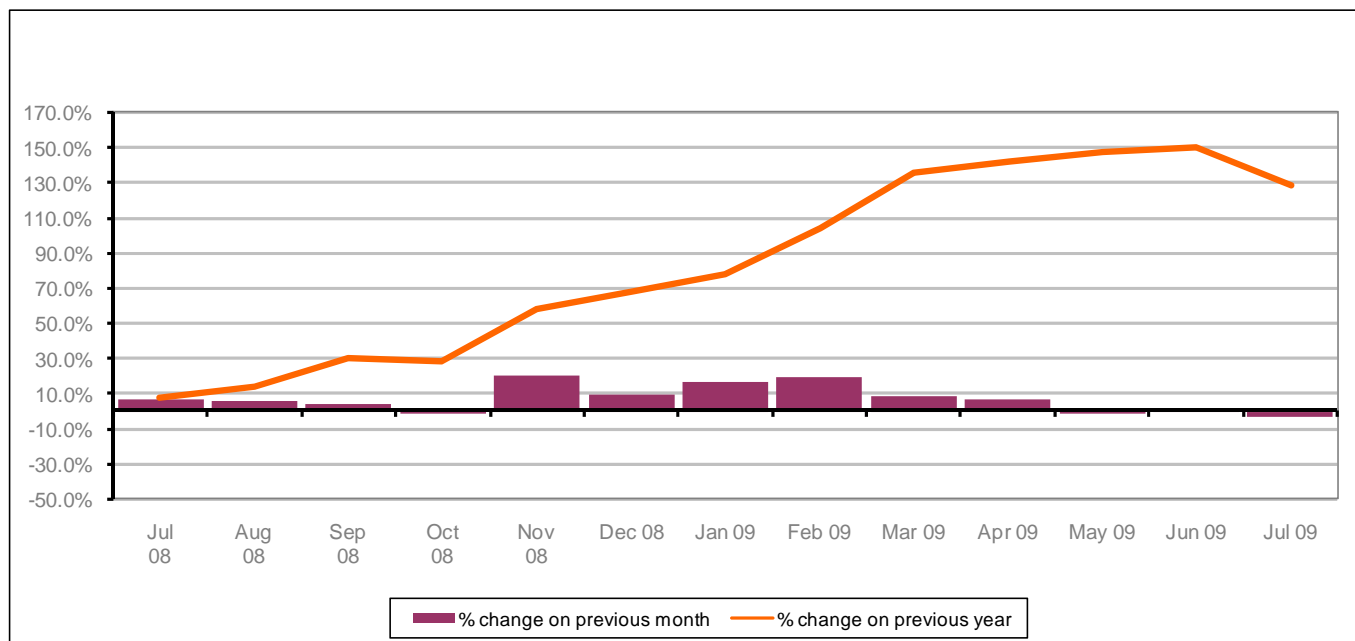


Figure 20 shows that the monthly claimant count decreased in July 2009 by 2.8%. The rate in July 2009 was 129% higher than it was in July 2008.

PART 4: LOCAL AUTHORITY AND DISTRICT ANALYSIS

4.6 Tewkesbury District continued...

Figure 21: Claimant rates across Tewkesbury District wards - July 2009

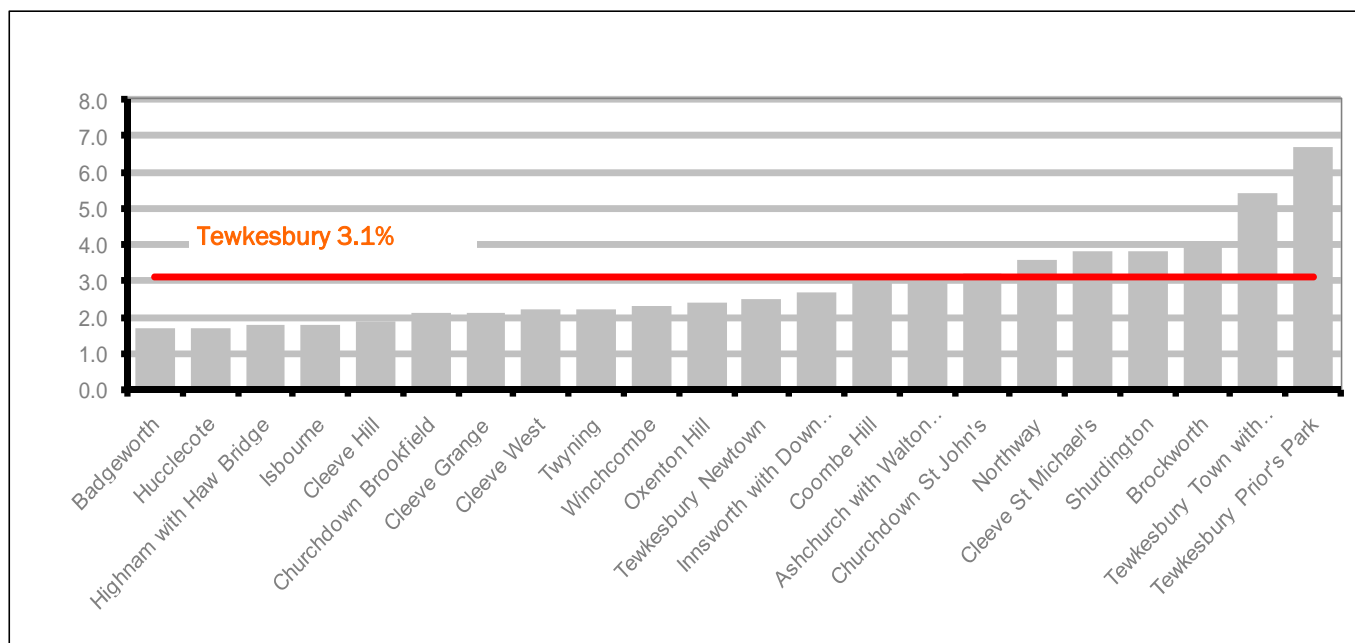
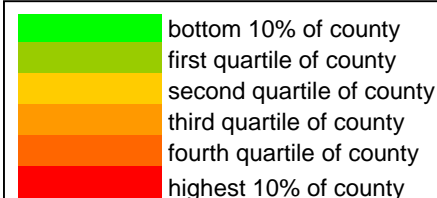


Figure 21 shows the claimant rates in Tewkesbury District wards. The red line represents the average claimant rate across the District of 3.1% and seven wards are above the average.

Table 10: Analysis of Claimant Count at Tewkesbury District level - July 2009

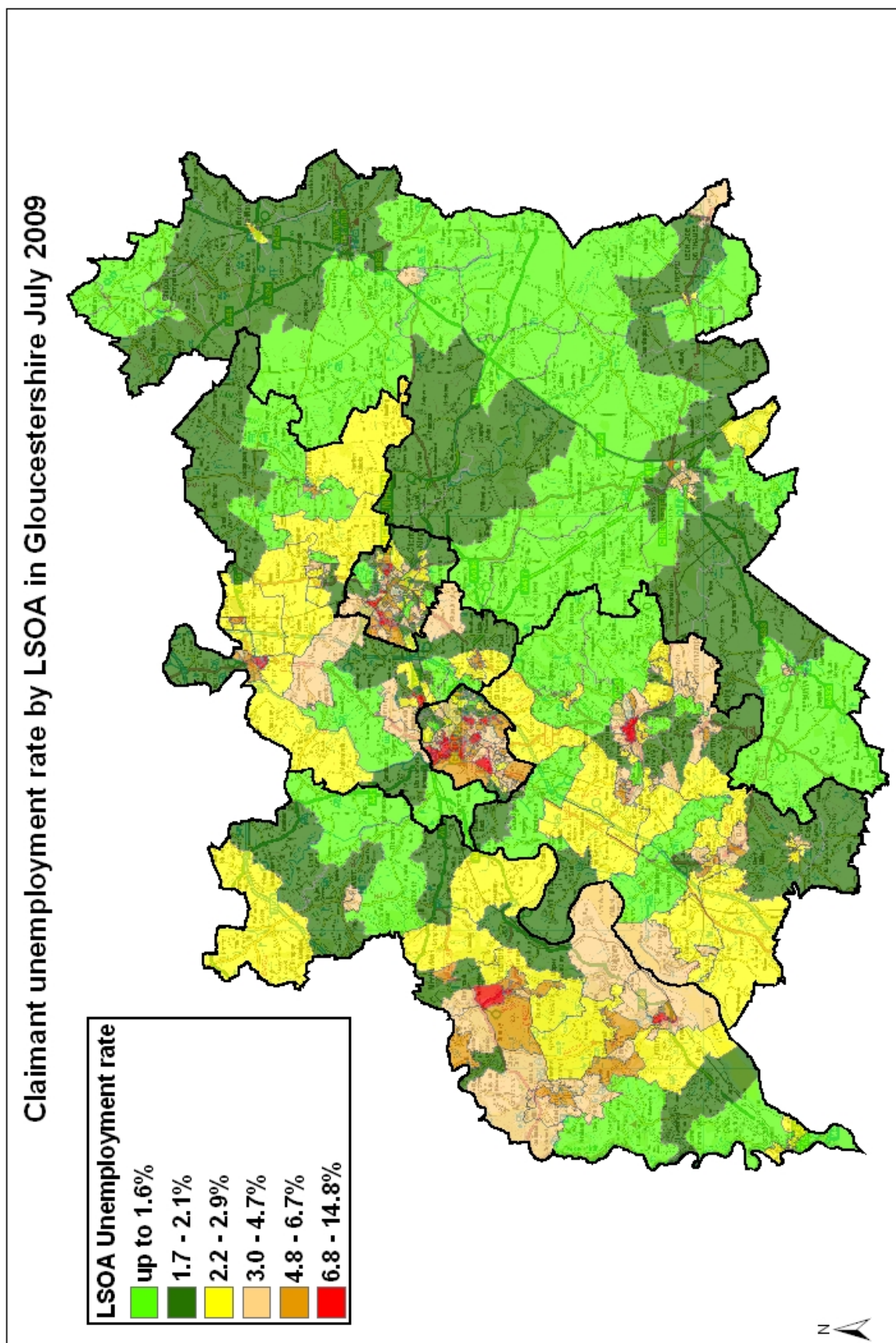
District	Ward	Rate	Rank*
Tewkesbury	Badgeworth	1.7	14
Tewkesbury	Hucclecote	1.7	14
Tewkesbury	Highnam with Haw Bridge	1.8	19
Tewkesbury	Isbourne	1.8	19
Tewkesbury	Cleeve Hill	1.9	24
Tewkesbury	Churchdown Brookfield	2.1	38
Tewkesbury	Cleeve Grange	2.1	38
Tewkesbury	Cleeve West	2.2	46
Tewkesbury	Twynning	2.2	46
Tewkesbury	Winchcombe	2.3	53
Tewkesbury	Oxenton Hill	2.4	60
Tewkesbury	Tewkesbury Newtown	2.5	64
Tewkesbury	Innsworth with Down Hatherley	2.7	71
Tewkesbury	Coombe Hill	3.0	81
Tewkesbury	Ashchurch with Walton Cardiff	3.1	82
Tewkesbury	Churchdown St John's	3.2	83
Tewkesbury	Northway	3.6	94
Tewkesbury	Cleeve St Michael's	3.8	101
Tewkesbury	Shurdington	3.8	101
Tewkesbury	Brockworth	4.1	109
Tewkesbury	Tewkesbury Town with Mitton	5.4	129
Tewkesbury	Tewkesbury Prior's Park	6.7	135



* 1 = "best" and 142 = "worst"

Table 10 shows overall claimant rates for Tewkesbury District wards and their position relative to all wards in Gloucestershire.

PART 5: MAP SHOWING DISTRIBUTION OF CLAIMANT RATE ACROSS GLOUCESTERSHIRE



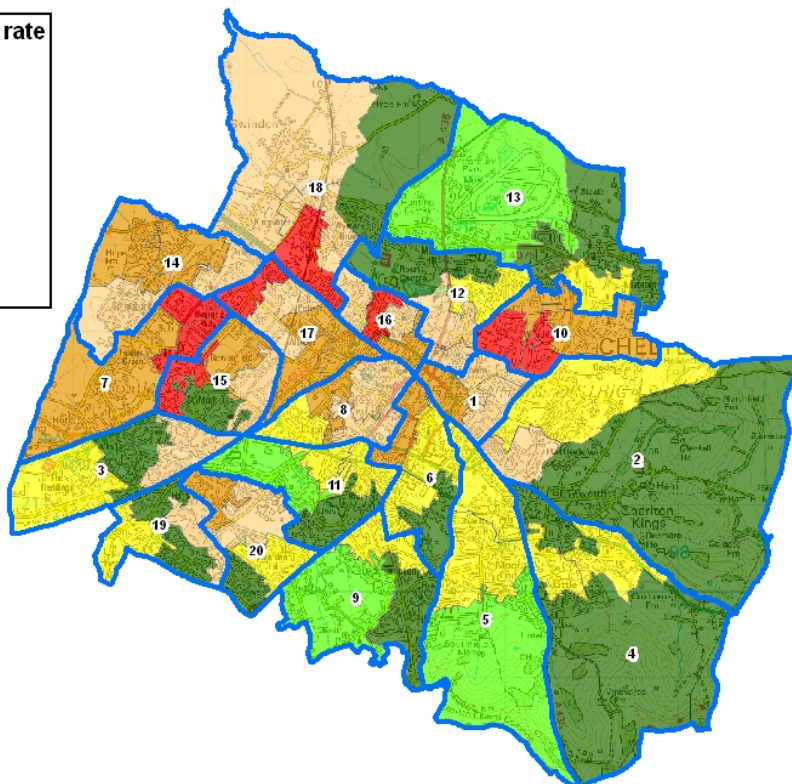
PART 5: MAP SHOWING DISTRIBUTION OF CLAIMANT RATE ACROSS GLOUCESTERSHIRE

Claimant unemployment rate by LSOA in Cheltenham July 2009

LSOA Unemployment rate

- up to 1.6%
- 1.7 - 2.1%
- 2.2 - 2.9%
- 3.0 - 4.7%
- 4.8 - 6.7%
- 6.8 - 14.8%

Wards



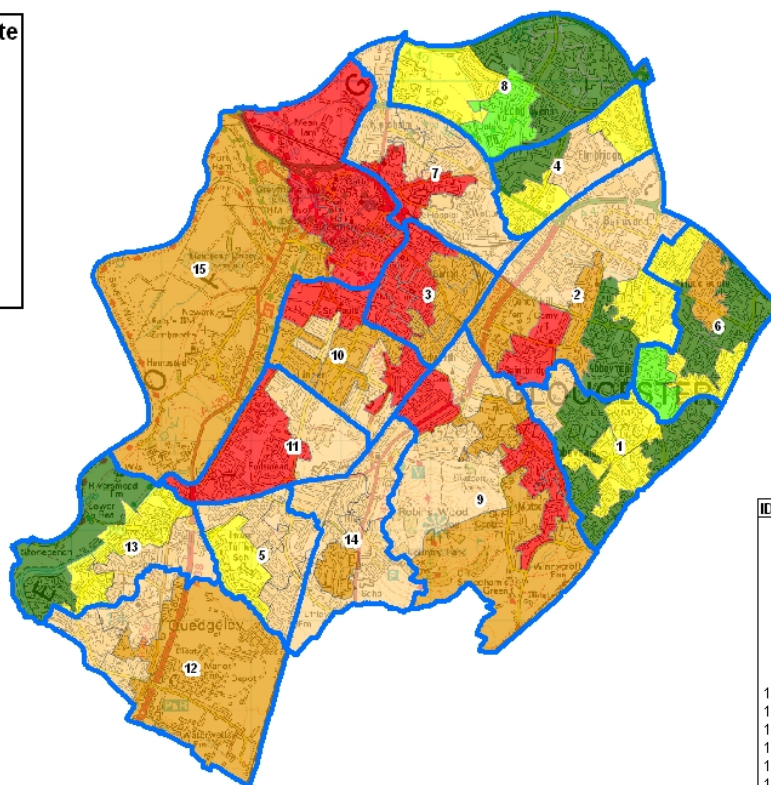
ID	WARD
1	All Saints
2	Battledown
3	Benhall and The Reddings
4	Charlton Kings
5	Charlton Park
6	College
7	Hesters Way
8	Lansdown
9	Leckhampton
10	Oakley
11	Park
12	Pittville
13	Prestbury
14	Springbank
15	St Mark's
16	St Paul's
17	St Peter's
18	Swindon Village
19	Up Hatherley
20	Warden Hill

Claimant unemployment rate by LSOA in Gloucester July 2009

LSOA Unemployment rate

- up to 1.6%
- 1.7 - 2.1%
- 2.2 - 2.9%
- 3.0 - 4.7%
- 4.8 - 6.7%
- 6.8 - 14.8%

Wards



ID	WARD
1	Abbey
2	Bamwood
3	Barton and Tredworth
4	Elmbridge
5	Grange
6	Hucclecote
7	Kingsholm and Wotton
8	Longlevens
9	Matson and Robinswood
10	Moreland
11	Podsmead
12	Quedgeley Fieldcourt
13	Quedgeley Severn Vale
14	Tuffley
15	Westgate

PART 6: YOUNG PEOPLE NOT IN EDUCATION, EMPLOYMENT OR TRAINING (NEET) IN GLOUCESTERSHIRE

Data provided by Prospects, the Connexions service in Gloucestershire on the situation of young people (16-18) in Gloucestershire who are not in education, employment or formal training.

Connexions Gloucestershire is required to report performance with the 16-18 age range against nationally defined criteria for counting the NEET group. The NEET group includes young people actively seeking education, employment or training as well as those young people who are either not yet ready or who are unable to access these opportunities because of their personal circumstances. The figures quoted below include young people in both of these categories.

Summary

As at the end of July 2009 there were 599 young people aged 16-18 not in education, employment or training in Gloucestershire and this figure translates into an adjusted (*) 16-18 NEET population of 4.4%. This figure evidences a slight increase from the performance achieved at the end of June 09 with most districts NEET population also increasing. The largest of these increases was in the Stroud District where the NEET population has increased by 0.6%. We have recently received our national comparator data which shows (at the end of June 09) Gloucestershire in the top 2 best performing local authorities in the South West with its NEET levels well below the SW average of 6.2%.

Total NEET Group by District Area 3st July 2009

	Cheltenham	Cotswold	Forest	Gloucester	Stroud	Tewkesbury	Total
NEET Group	132	52	78	165	120	52	599(*)
% NEET of total 16-18 cohort	6.2%	2.4%	3.4%	3.8%	4.8%	3.1%	4.4%(*)

Update – impact of recession

- Gloucestershire has evidenced a 14% increase in the number of young people aged 16-18 not in education, employment or training (NEET) between June 08 and June 09
- The biggest increase within this age range is 18 yr olds where NEET levels have increased by 32% in the period up to June 09
- Approximately 25% of Gloucestershire's NEET group are in 'dormant' or inactive categories such as illness or pregnancy – these are activities which DCSF require us to count as NEET
- Connexions has evidenced a 60% increase in caller traffic into its First Stop Shops when comparing traffic figures from June 08 to June 09
- Connexions Personal Advisers supported approx 2500 young people during June 2009.

Support for school leavers on GCSE and A level results days

We are currently liaising closely with all secondary schools in the county to ensure there is support available for young people when they receive this years exam results. We are in the process of contacting young people who still remain without an offer of education or training (via the September Guarantee) to offer them the appropriate support and guidance on the post 16 options available to them.

If you would like to receive any further information on Gloucestershire's NEET strategy then please contact

Andrew.Webster@prospects.co.uk or telephone 01452 426900

(*) Adjustment includes a proportion of young people aged 16-18 whose outcomes are not-known to Connexions Gloucestershire