

Unemployment Bulletin

Issue 38 September 2011

Contents

Part 1: Summary

A summary of unemployment data at district, County, regional and national level

1

Part 2: County

Unemployment figures for the County compared to the South West and the rest of the UK

3

Part 3: Districts

A comparative break down of unemployment figures by district

4

Part 4: Wards

Further breakdown of unemployment figures by ward:

Cheltenham

6

Cotswolds

8

Forest of Dean

10

Gloucester

12

Stroud

14

Tewkesbury

16

Part 5: Map

Distribution of claimant rate across Gloucestershire

18

Part 6: Young People

Data about Young People Not in Education, Employment or Training (NEET)

20

INTRODUCTION

The Unemployment Bulletin provides a monthly update on unemployment data for Gloucestershire, the South West region and the United Kingdom. It is produced by the Economic section of the County Council Chief Executive's Support Unit Research Team. The data is sourced from the Office for National Statistics via Nomis (www.nomis.co.uk).

The claimant count measures the number of people claiming unemployment-related benefit (currently Job Seeker's allowance). The claimant rate is the number of claimants as a proportion of the working age population.

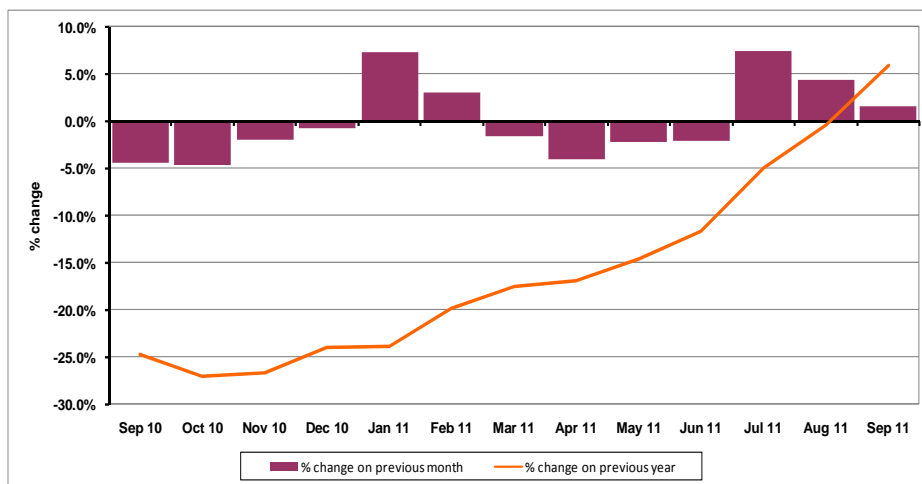
PART 1: SUMMARY

The claimant rate in Gloucestershire was 2.6% in September 2011. This was the same as the August 2011 figure. The UK and South West rate also remained the same as last month at 3.9% and 2.6% respectively. Gloucestershire's rate was the same as the South West average of 2.6%, and 1.3% lower than the UK average of 3.9%.

The claimant count in Gloucestershire in September 2011 increased by 159 people. The amount of people claiming in September 2011 was 1.6% higher than the number in August 2011. This compares to a 2.5% increase in the South West and a 0.1% increase for the UK.

The year on year claimant count in Gloucestershire has increased. The count was 5.9% higher in September 2011 than at the same point in the previous year as shown in the graph below.

Gloucestershire claimants - Month on Month and Year on Year change: September 2010 to September 2011



Source: ONS Crown Copyright Reserved

Produced by:

The Research Team (Economics)
Chief Executive Support Unit
Gloucestershire County Council
October 2011

DISTRICTS AT A GLANCE

At a glance unemployment information grouped by district. Includes:

Claim count: Total number of people claiming Job Seekers Allowance in September 2011

Compared to last month: How much larger/smaller September's claim count is compared to August, expressed as a %

Claimant rate: The % of working population claiming Job Seekers Allowance in September 2011

Highest claiming ward: The ward with the highest claim count in that district and the rate

CHELTENHAM BOROUGH

| | |
|-------------------------|---|
| Claim count: | 2,250 |
| Compared to last month: | +2.1% |
| Claimant rate: | 3.0% |
| Highest claiming wards | Hesters Way (6.0%) and Oakley (6.0%) |

GLOUCESTER CITY

| | |
|-------------------------|--------------------|
| Claim count: | 3,034 |
| Compared to last month: | +1.4% |
| Claimant rate: | 4.0% |
| Highest claiming ward | Westgate (7.8%) |

COTSWOLD DISTRICT

| | |
|-------------------------|---------------------------------|
| Claim count: | 727 |
| Compared to last month: | +4.8% |
| Claimant rate: | 1.4% |
| Highest claiming ward | Cirencester Watermoor (3.7%) |

STROUD DISTRICT

| | |
|-------------------------|-----------------|
| Claim count: | 1,440 |
| Compared to last month: | +1.9% |
| Claimant rate: | 2.1% |
| Highest claiming ward | Slade (5.2%) |

FOREST OF DEAN

| | |
|-------------------------|---------------------------|
| Claim count: | 1,326 |
| Compared to last month: | +1.1% |
| Claimant rate: | 2.6% |
| Highest claiming ward | Cinderford East (4.5%) |

TEWKESBURY BOROUGH

| | |
|-------------------------|-----------------------------------|
| Claim count: | 1,089 |
| Compared to last month: | -0.3% |
| Claimant rate: | 2.2% |
| Highest claiming ward | Tewkesbury Prior's Park (5.1%) |

YOUNG PEOPLE NOT IN EDUCATION, EMPLOYMENT OR TRAINING (NEET)

As at the end of September 2011 there were 724 young people aged 16-18 not in education, employment or training in Gloucestershire and this figure translates into an adjusted (*) 16-18 NEET population of 5.6%.

PART 2: UK, SW AND GLOUCESTERSHIRE INDICATORS

The unemployment situation in Gloucestershire compared to the South West and the UK.

Claimant Rate

Figure 1: Claimant Rate for Gloucestershire, the South West and UK over the past year

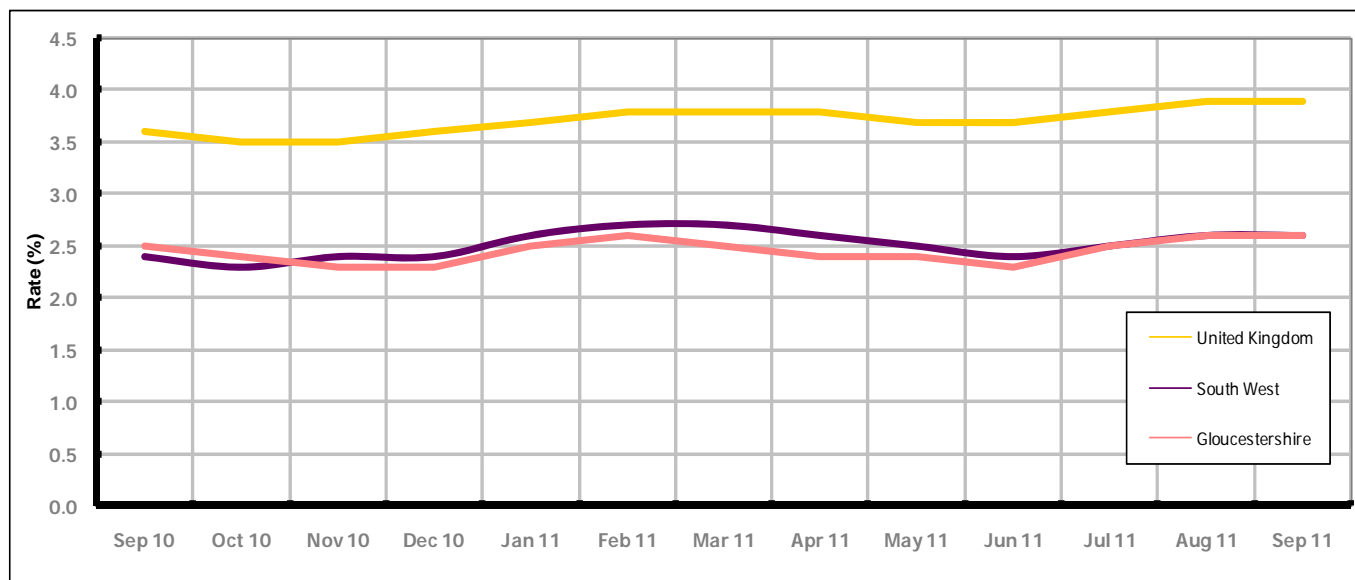


Figure 1 shows the claimant rate for Gloucestershire at 2.6% in September 2011. The rate remained lower than the South West average between November 2010 and July 2011, when it grew to the same as the South West rate, it has been lower by approximately 1.3% against the UK average during the same period. The September 2011 rate remained the same as August 2011.

Claimant Count

Table 1: Analysis of UK, South West and Gloucestershire Claimant Counts

| Area | Claimant Count in September 2011 | % change on August 2011 | Average % change over the last six months | Consecutive months increasing |
|-----------------|----------------------------------|-------------------------|---|-------------------------------|
| UK | 1,578,609 | +0.1% | +0.6% | 2 |
| South West | 87,712 | +2.5% | +0.7% | 2 |
| Gloucestershire | 9,866 | +1.6% | +1.5% | 2 |

Table 1 shows that in September 2011, the number of claimants in Gloucestershire was 1.6% higher than the number in August 2011.

The average change in claimants in Gloucestershire for the six months to September 2011 was +1.5%. This is 0.9% higher than the UK average and 0.8% higher than the South West average.

PART 3: LOCAL AUTHORITY DISTRICT ANALYSIS

Claimant Rate and Claimant Count

Figure 2: Claimant Rate (%) across Gloucestershire - September 2011

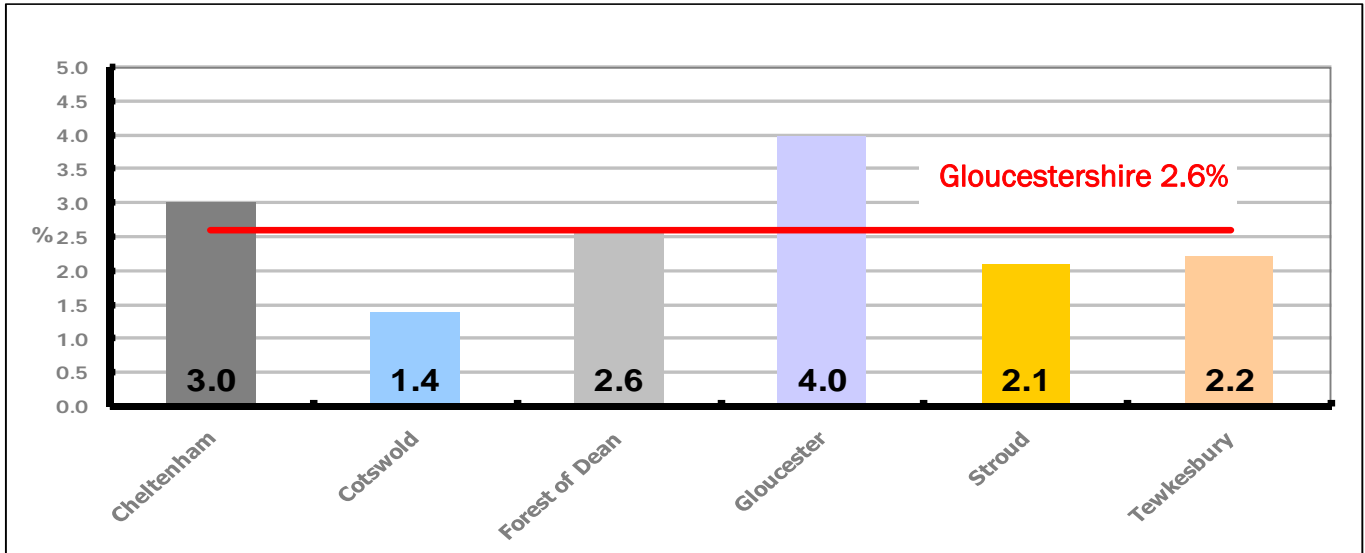


Figure 2 shows the claimant rate for September 2011 in Gloucestershire. Between August 2011 and September 2011 Cheltenham, Forest of Dean and Gloucester districts experienced an increase, while all the other districts remained the same.

Figure 3: Total claimants over the past year across Gloucestershire Districts

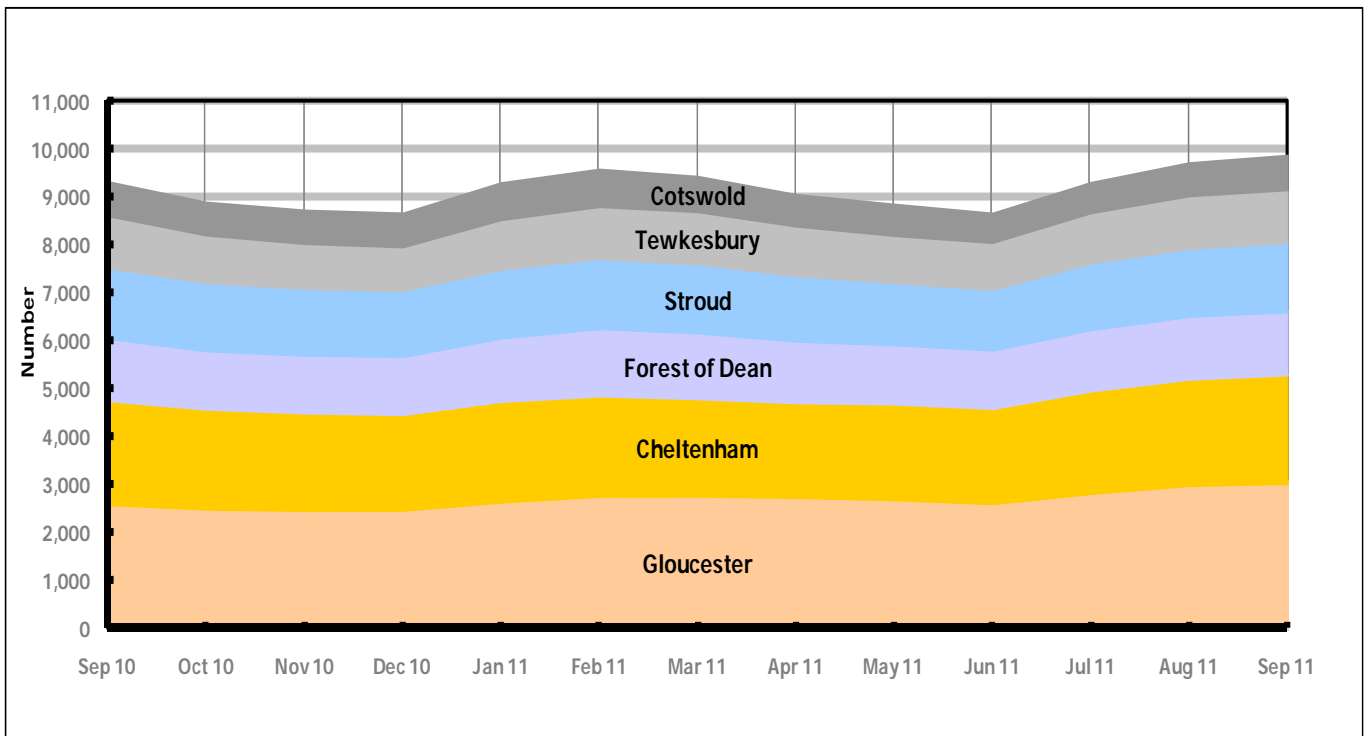


Figure 3 shows the overall claimant count by district for Gloucestershire over the past year. It shows the number of claimants declined between September 2010 and June 2011, with the exception of January, February 2011. Since July 2011 the number of claimants have been increasing.

Table 2: Analysis of Gloucestershire and District Claimant Counts

| Total | Sep 11 Number | Sep 11 Rate | Aug 11 Number | Aug 11 Rate | Monthly change | % monthly change | Monthly change of rate |
|------------------------|------------------|----------------|------------------|----------------|-------------------|---------------------|---------------------------|
| Gloucestershire | 9,866 | 2.6 | 9,707 | 2.6 | 159 | 1.6% | 0.0 |
| Cheltenham | 2,250 | 3.0 | 2,203 | 2.9 | 47 | 2.1% | 0.1 |
| Cotswold | 727 | 1.4 | 694 | 1.4 | 33 | 4.8% | 0.0 |
| Forest of Dean | 1,326 | 2.6 | 1,312 | 2.5 | 14 | 1.1% | 0.1 |
| Gloucester | 3,034 | 4.0 | 2,993 | 3.9 | 41 | 1.4% | 0.1 |
| Stroud | 1,440 | 2.1 | 1,413 | 2.1 | 27 | 1.9% | 0.0 |
| Tewkesbury | 1,089 | 2.2 | 1,092 | 2.2 | -3 | -0.3% | 0.0 |

Table 2 shows the change in the claimant count in September 2011 compared to August 2011. Tewkesbury district experienced a minor decrease in the number of claimants, while the remaining districts saw an increase.

Table 3: Analysis of Male Gloucestershire and District Claimant Counts

| Male | Sep 11 Number | Sep 11 Rate | Aug 11 Number | Aug 11 Rate | Monthly change | % monthly change | Monthly change of rate |
|------------------------|------------------|----------------|------------------|----------------|-------------------|---------------------|---------------------------|
| Gloucestershire | 6,441 | 3.5 | 6,360 | 3.4 | 81 | 1.3% | 0.1 |
| Cheltenham | 1,474 | 3.9 | 1,458 | 3.8 | 16 | 1.1% | 0.1 |
| Cotswold | 424 | 1.7 | 410 | 1.6 | 14 | 3.4% | 0.1 |
| Forest of Dean | 868 | 3.4 | 843 | 3.3 | 25 | 3.0% | 0.1 |
| Gloucester | 2,035 | 5.3 | 2,009 | 5.2 | 26 | 1.3% | 0.1 |
| Stroud | 934 | 2.7 | 918 | 2.7 | 16 | 1.7% | 0.0 |
| Tewkesbury | 706 | 2.8 | 722 | 2.9 | -16 | -2.2% | -0.1 |

Table 3 shows the change in the male claimant count in September 2011 compared to August 2011. Tewkesbury district experienced a decline in the number of male claimants, while the remaining districts saw an increase.

Table 4: Analysis of Female Gloucestershire and District Claimant Counts

| Female | Sep 11 Number | Sep 11 Rate | Aug 11 Number | Aug 11 Rate | Monthly change | % monthly change | Monthly change of rate |
|------------------------|------------------|----------------|------------------|----------------|-------------------|---------------------|---------------------------|
| Gloucestershire | 3,425 | 1.8 | 3,347 | 1.8 | 78 | 2.3% | 0.0 |
| Cheltenham | 776 | 2.1 | 745 | 2.0 | 31 | 4.2% | 0.1 |
| Cotswold | 303 | 1.2 | 284 | 1.1 | 19 | 6.7% | 0.1 |
| Forest of Dean | 458 | 1.8 | 469 | 1.8 | -11 | -2.3% | 0.0 |
| Gloucester | 999 | 2.6 | 984 | 2.6 | 15 | 1.5% | 0.0 |
| Stroud | 506 | 1.5 | 495 | 1.4 | 11 | 2.2% | 0.1 |
| Tewkesbury | 383 | 1.5 | 370 | 1.4 | 13 | 3.5% | 0.1 |

Table 4 shows the change in the female claimant count in September 2011 compared to August 2011. Forest of Dean district experienced a decrease in the number of female claimants, while the remaining districts saw an increase.

PART 4: LOCAL AUTHORITY DISTRICT AND WARD ANALYSIS

This section covers the six districts and a comparison of their constituent wards.

4.1 Cheltenham Borough

Claimant Rate and Claimant Count

Figure 4: Cheltenham Borough claimant rate over the last year

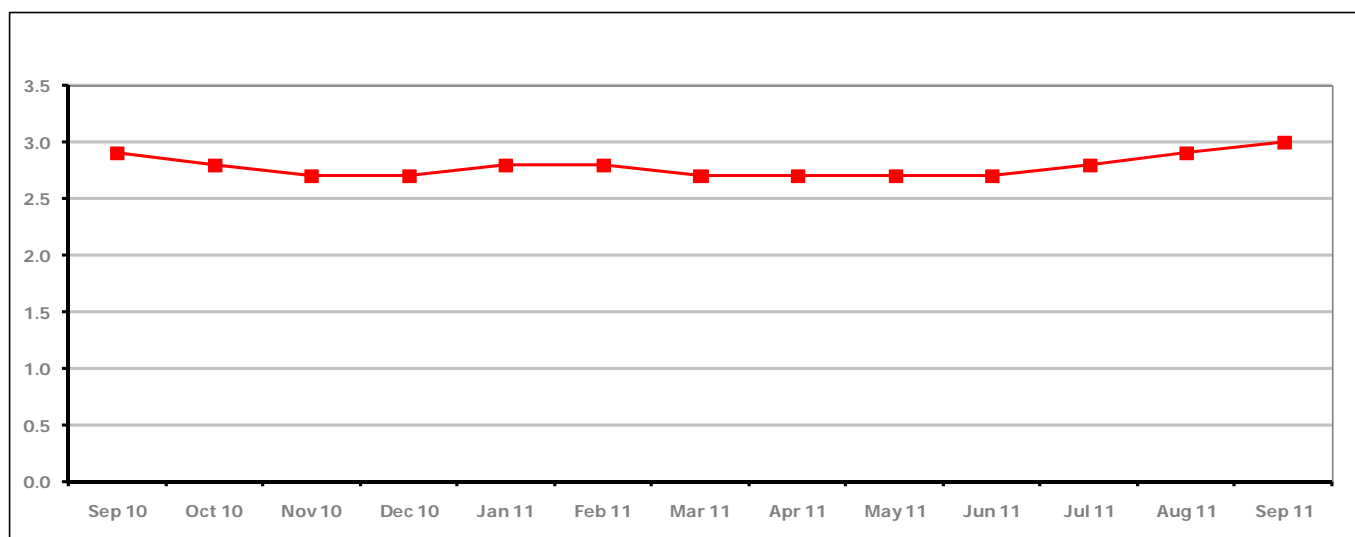


Figure 4 shows the claimant rate in Cheltenham increased in September 2011 to 3.0%.

Figure 5: Cheltenham Borough claimants - Month on Month and Year on Year change

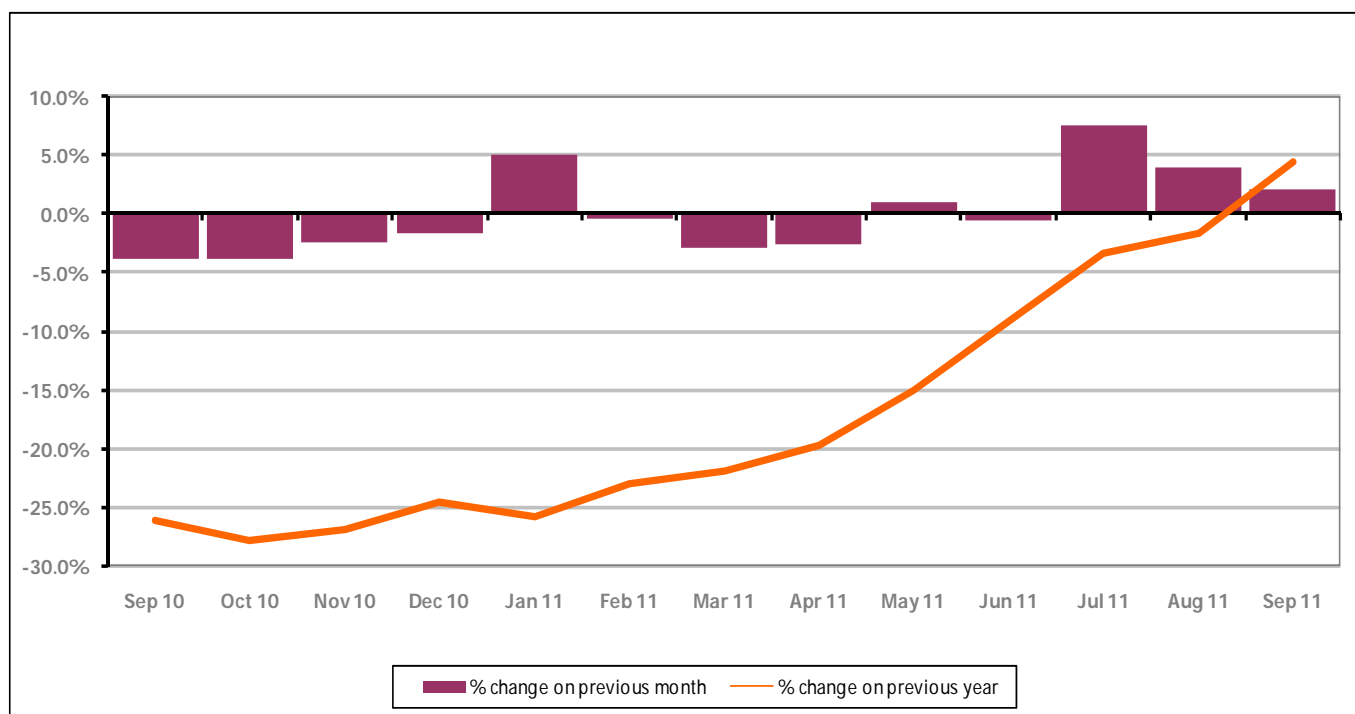


Figure 5 shows the claimant count increased by +2.1% since last month. The change on the previous year has increased in September 2011 compared to August 2011 to +4.5%.

PART 4: LOCAL AUTHORITY DISTRICT AND WARD ANALYSIS

4.1 Cheltenham Borough continued...

Figure 6: Claimant rates across Cheltenham Borough wards - September 2011

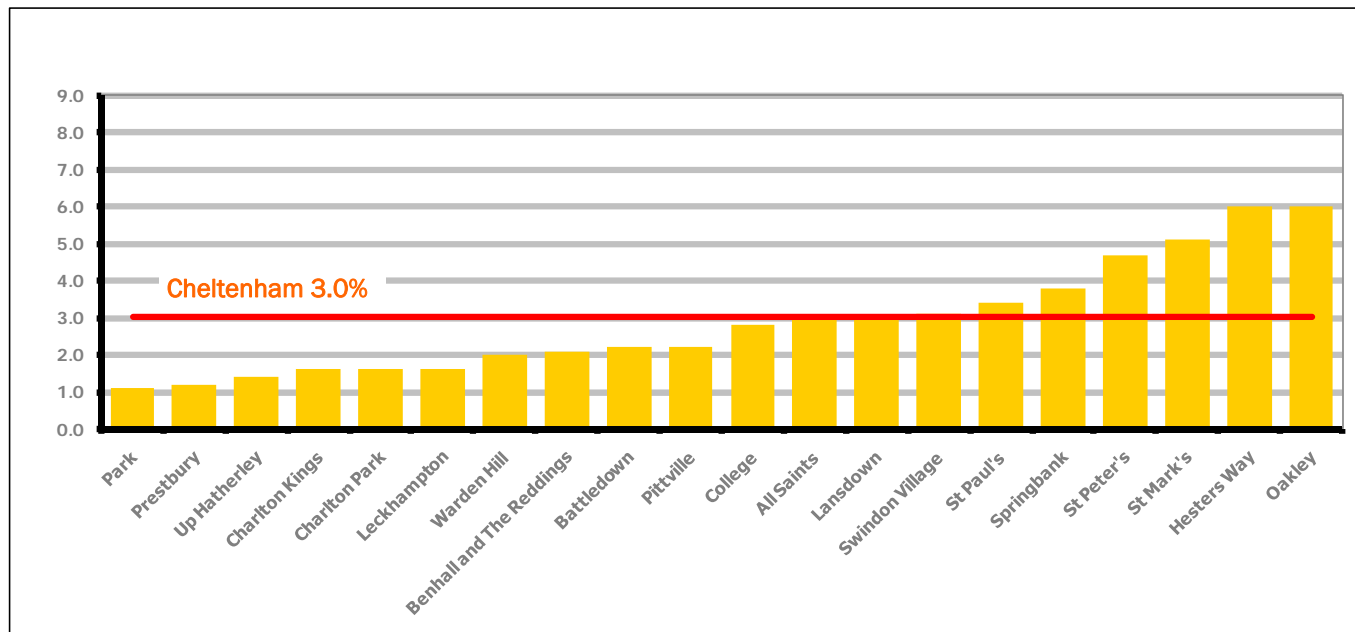


Figure 6 shows the claimant rates for Cheltenham Borough wards. The red line represents the average claimant rate across the Borough of 3.0%. Seven wards lie above the average.

Table 5: Analysis of Claimant Count at Cheltenham Borough ward level - September 2011

| District | Ward | Rate | Rank* |
|------------|--------------------------|------|-------|
| Cheltenham | Park | 1.1 | 20 |
| Cheltenham | Prestbury | 1.2 | 26 |
| Cheltenham | Up Hatherley | 1.4 | 38 |
| Cheltenham | Charlton Kings | 1.6 | 57 |
| Cheltenham | Charlton Park | 1.6 | 57 |
| Cheltenham | Leckhampton | 1.6 | 57 |
| Cheltenham | Warden Hill | 2.0 | 77 |
| Cheltenham | Benhall and The Reddings | 2.1 | 83 |
| Cheltenham | Battledown | 2.2 | 86 |
| Cheltenham | Pittville | 2.2 | 86 |
| Cheltenham | College | 2.8 | 102 |
| Cheltenham | All Saints | 3.0 | 108 |
| Cheltenham | Lansdown | 3.0 | 108 |
| Cheltenham | Swindon Village | 3.1 | 112 |
| Cheltenham | St Paul's | 3.4 | 121 |
| Cheltenham | Springbank | 3.8 | 124 |
| Cheltenham | St Peter's | 4.7 | 130 |
| Cheltenham | St Mark's | 5.1 | 132 |
| Cheltenham | Hesters Way | 6.0 | 137 |
| Cheltenham | Oakley | 6.0 | 137 |

| | |
|--|---------------------------|
| | bottom 10% of county |
| | first quartile of county |
| | second quartile of county |
| | third quartile of county |
| | fourth quartile of county |
| | highest 10% of county |

* 1 = "best" and 142 = "worst"

Table 5 shows overall claimant rates for Cheltenham Borough wards and their position relative to all wards in Gloucestershire.

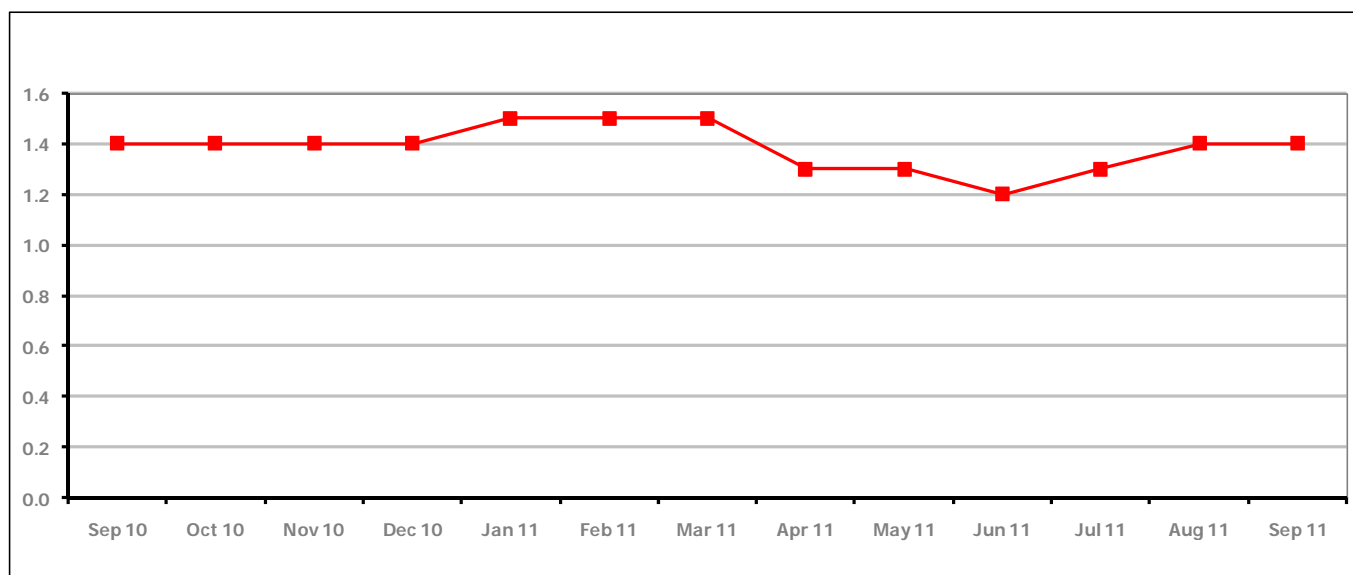
PART 4: LOCAL AUTHORITY DISTRICT AND WARD ANALYSIS**4.2 Cotswold District****Claimant Rate and Claimant Count***Figure 7: Cotswold District claimant rate over the last year*

Figure 7 shows the claimant rate in Cotswold District remained the same as last month at 1.4%.

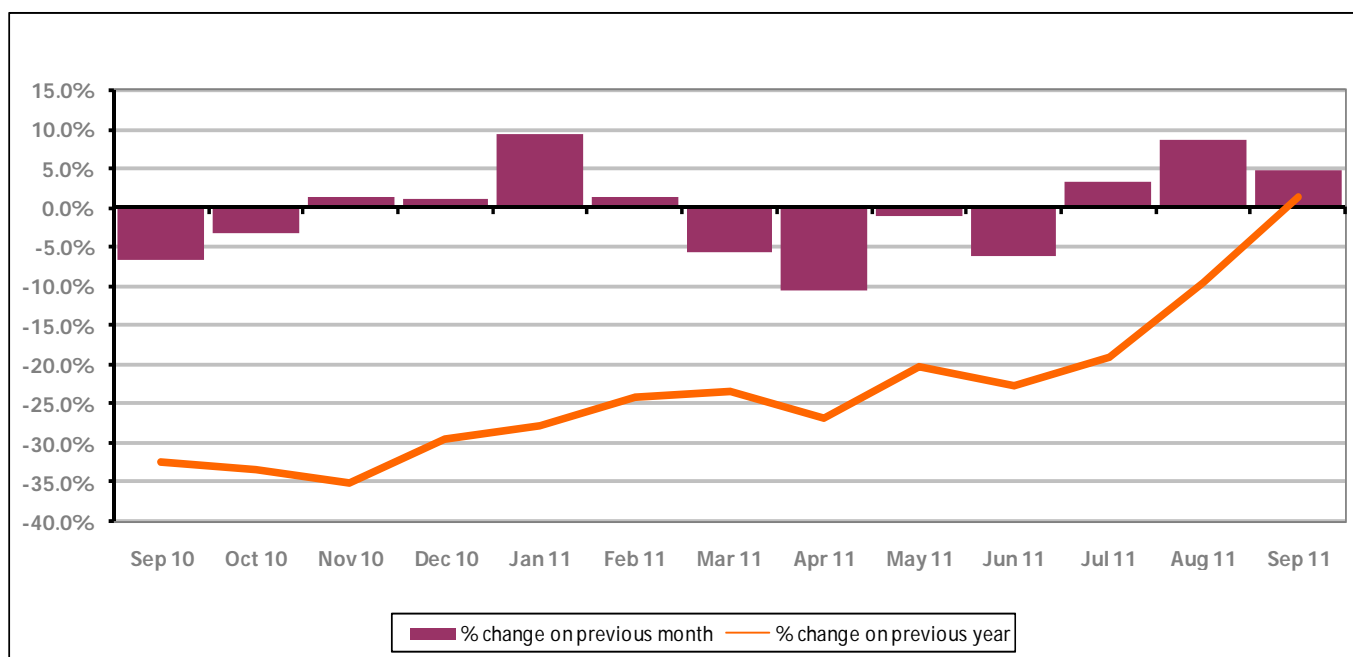
Figure 8: Cotswold District claimants - Month on Month and Year on Year change

Figure 8 shows the claimant count increased by +4.8% since August 2011. The change on the previous year has increased from August 2011 to September 2011 to +1.4%.

PART 4: LOCAL AUTHORITY DISTRICT AND WARD ANALYSIS

4.2 Cotswold District continued...

Figure 9: Claimant rates across Cotswold District wards - September 2011

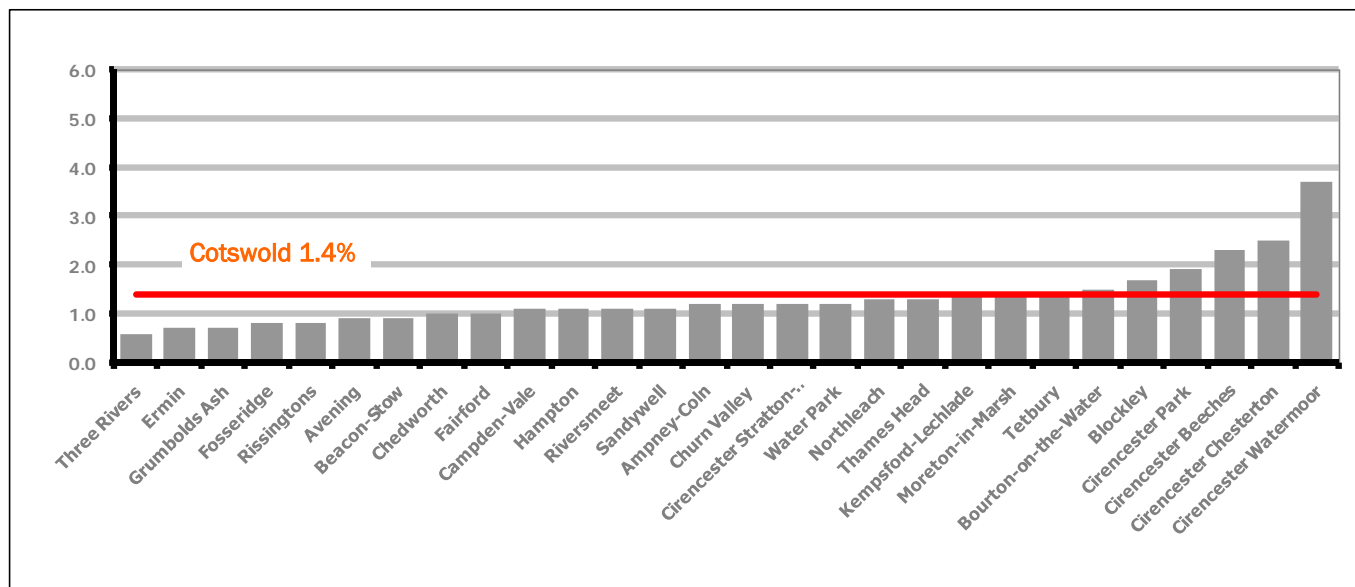
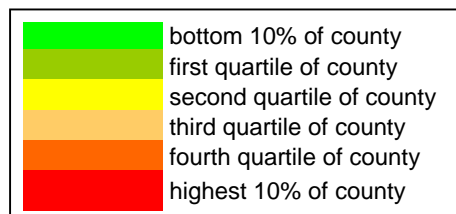


Figure 9 shows the claimant rates for Cotswold District wards. The red line represents the average claimant rate across the District of 1.4%. Six wards lie above the average.

Table 6: Analysis of Claimant Count at Cotswold District ward level - September 2011

| District | Ward | Rate | Rank* |
|-----------|-------------------------------|------|-------|
| Cotswolds | Three Rivers | 0.6 | 1 |
| Cotswolds | Ermin | 0.7 | 2 |
| Cotswolds | Grumbolds Ash | 0.7 | 2 |
| Cotswolds | Fosseridge | 0.8 | 6 |
| Cotswolds | Rissingtons | 0.8 | 6 |
| Cotswolds | Avening | 0.9 | 10 |
| Cotswolds | Beacon-Stow | 0.9 | 10 |
| Cotswolds | Chedworth | 1.0 | 15 |
| Cotswolds | Fairford | 1.0 | 15 |
| Cotswolds | Campden-Vale | 1.1 | 20 |
| Cotswolds | Hampton | 1.1 | 20 |
| Cotswolds | Riversmeet | 1.1 | 20 |
| Cotswolds | Sandywell | 1.1 | 20 |
| Cotswolds | Ampney-Coln | 1.2 | 26 |
| Cotswolds | Churn Valley | 1.2 | 26 |
| Cotswolds | Cirencester Stratton-Whiteway | 1.2 | 26 |
| Cotswolds | Water Park | 1.2 | 26 |
| Cotswolds | Northleach | 1.3 | 34 |
| Cotswolds | Thames Head | 1.3 | 34 |
| Cotswolds | Kempsford-Lechlade | 1.4 | 38 |
| Cotswolds | Moreton-in-Marsh | 1.4 | 38 |
| Cotswolds | Tetbury | 1.4 | 38 |
| Cotswolds | Bourton-on-the-Water | 1.5 | 47 |
| Cotswolds | Blockley | 1.7 | 65 |
| Cotswolds | Cirencester Park | 1.9 | 73 |
| Cotswolds | Cirencester Beeches | 2.3 | 90 |
| Cotswolds | Cirencester Chesterton | 2.5 | 96 |
| Cotswolds | Cirencester Watermoor | 3.7 | 123 |



* 1 = "best" and 142 = "worst"

Table 6 shows overall claimant rates for Cotswold District wards and their position relative to all wards in Gloucestershire.

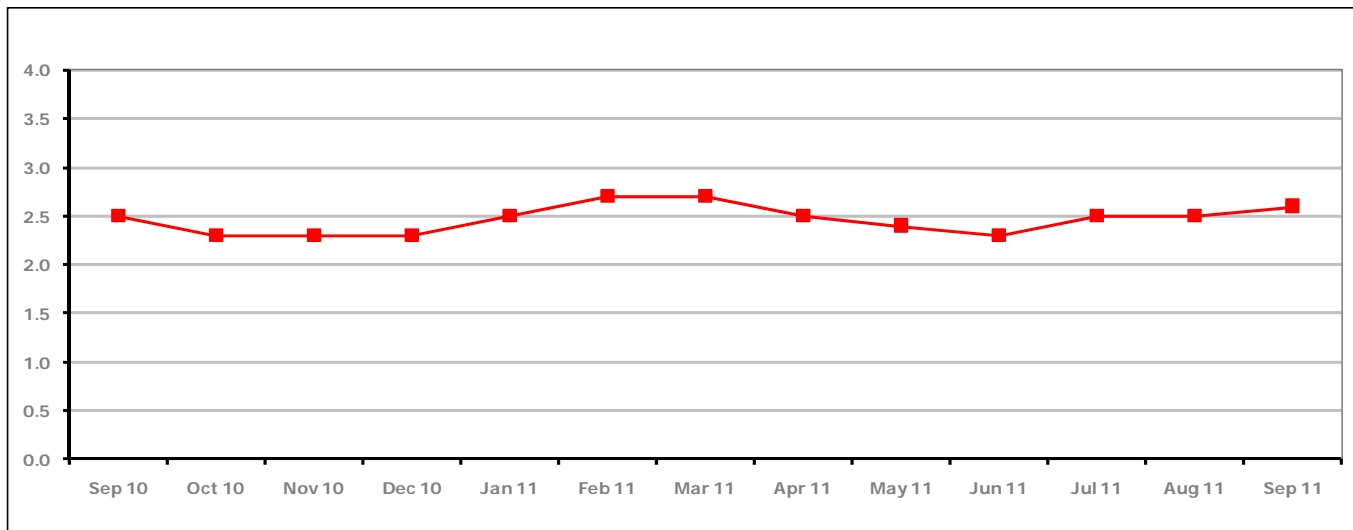
PART 4: LOCAL AUTHORITY DISTRICT AND WARD ANALYSIS**4.3 Forest of Dean District****Claimant Rate and Claimant Count***Figure 10: Forest of Dean District claimant rate over the last year*

Figure 10 shows the claimant rate in the Forest of Dean increased in September 2011 to 2.6%.

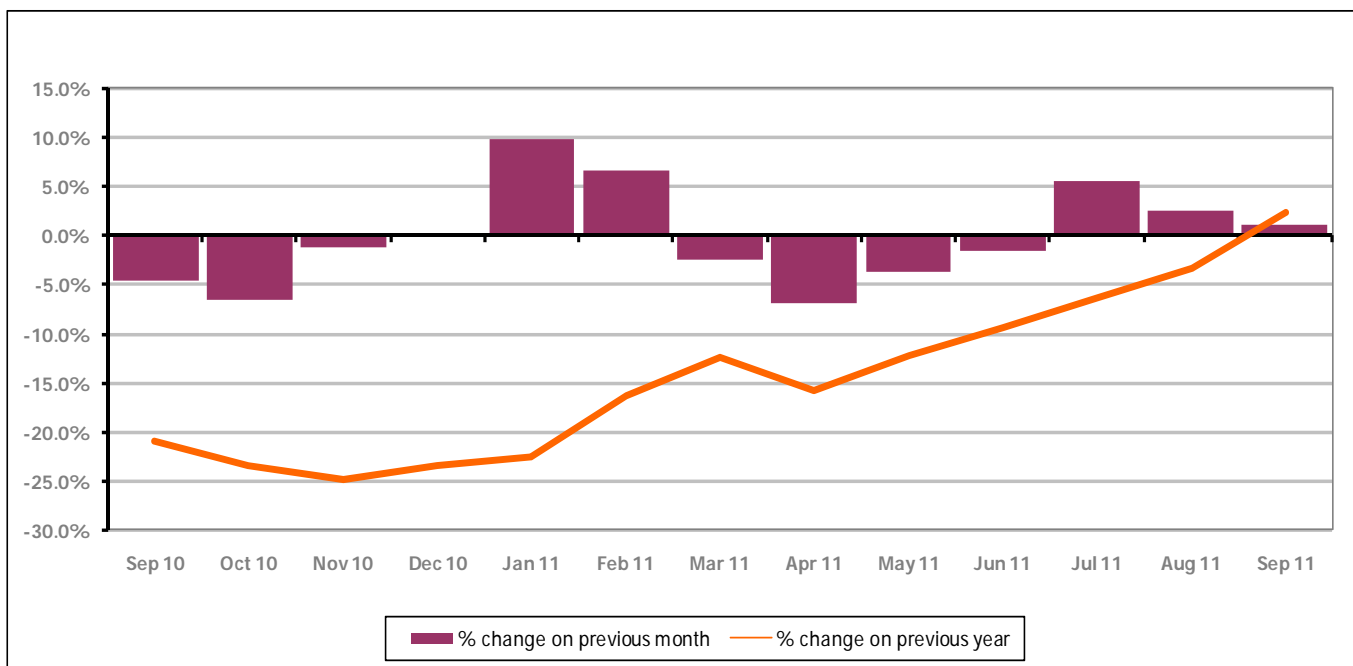
Figure 11: Forest of Dean District claimants - Month on Month and Year on Year change

Figure 11 shows the claimant count increased by +1.1% since August 2011. The change on the previous year increased between August and September 2011 to +2.3%.

PART 4: LOCAL AUTHORITY DISTRICT AND WARD ANALYSIS

4.3 Forest of Dean District continued...

Figure 12: Claimant rates across Forest of Dean District wards - September 2011

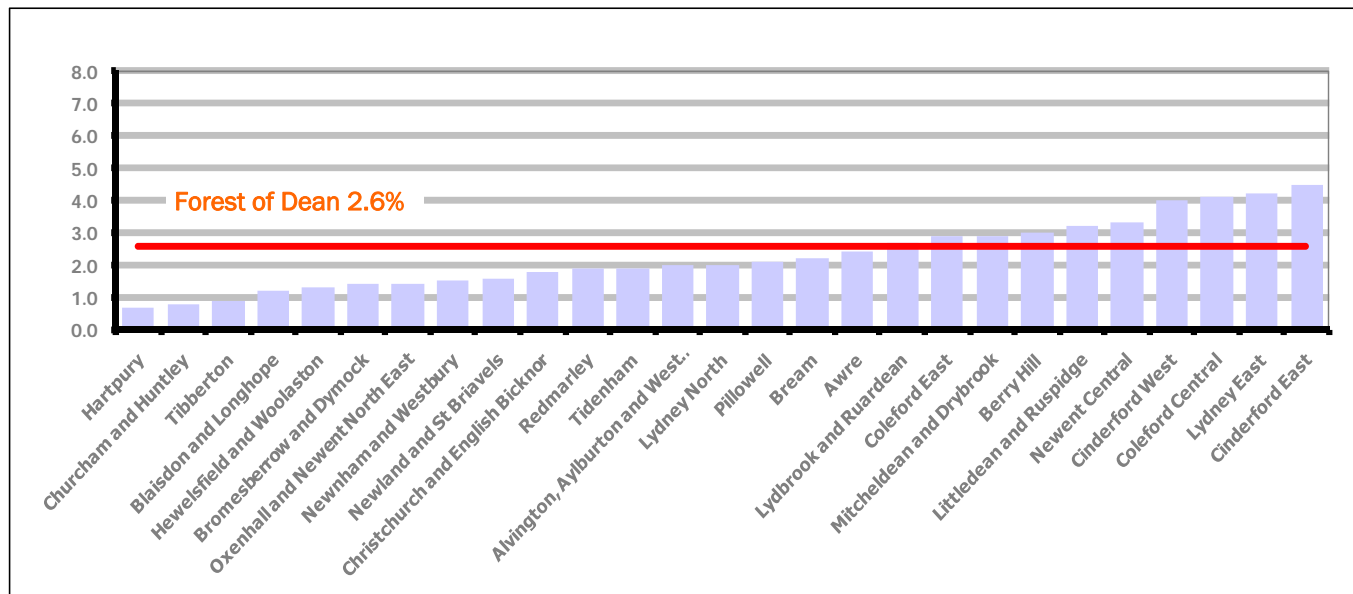
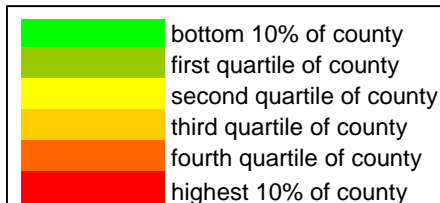


Figure 12 shows the claimant rates for Forest of Dean District wards. The red line represents the average claimant rate across the District of 2.6 %. Ten wards lie above the average.

Table 7: Analysis of Claimant Count at Forest of Dean District ward level - September 2011

| District | Ward | Rate | Rank* |
|----------|--------------------------------------|------|-------|
| Forest | Hartpury | 0.7 | 2 |
| Forest | Churcham and Huntley | 0.8 | 6 |
| Forest | Tibberton | 0.9 | 10 |
| Forest | Blaisdon and Longhope | 1.2 | 26 |
| Forest | Hewelsfield and Woolaston | 1.3 | 34 |
| Forest | Bromesberrow and Dymock | 1.4 | 38 |
| Forest | Oxenhall and Newent North East | 1.4 | 38 |
| Forest | Newnham and Westbury | 1.5 | 47 |
| Forest | Newland and St Briavels | 1.6 | 57 |
| Forest | Christchurch and English Bicknor | 1.8 | 70 |
| Forest | Redmarley | 1.9 | 73 |
| Forest | Tidenham | 1.9 | 73 |
| Forest | Alvington, Aylburton and West Lydney | 2.0 | 77 |
| Forest | Lydney North | 2.0 | 77 |
| Forest | Pillowell | 2.1 | 83 |
| Forest | Bream | 2.2 | 86 |
| Forest | Awre | 2.4 | 93 |
| Forest | Lydbrook and Ruardean | 2.7 | 100 |
| Forest | Coleford East | 2.9 | 103 |
| Forest | Mitcheldean and Drybrook | 2.9 | 103 |
| Forest | Berry Hill | 3.0 | 108 |
| Forest | Littledean and Ruspidge | 3.2 | 113 |
| Forest | Newent Central | 3.3 | 115 |
| Forest | Cinderford West | 4.0 | 126 |
| Forest | Coleford Central | 4.1 | 127 |
| Forest | Lydney East | 4.2 | 128 |
| Forest | Cinderford East | 4.5 | 129 |



* 1 = "best" and 142 = "worst"

Table 7 shows overall claimant rates for the Forest of Dean District wards and their position relative to all wards in Gloucestershire.

PART 4: LOCAL AUTHORITY DISTRICT AND WARD ANALYSIS

4.4 Gloucester City

Claimant Rate and Claimant Count

Figure 13: Gloucester City claimant rate over the last year

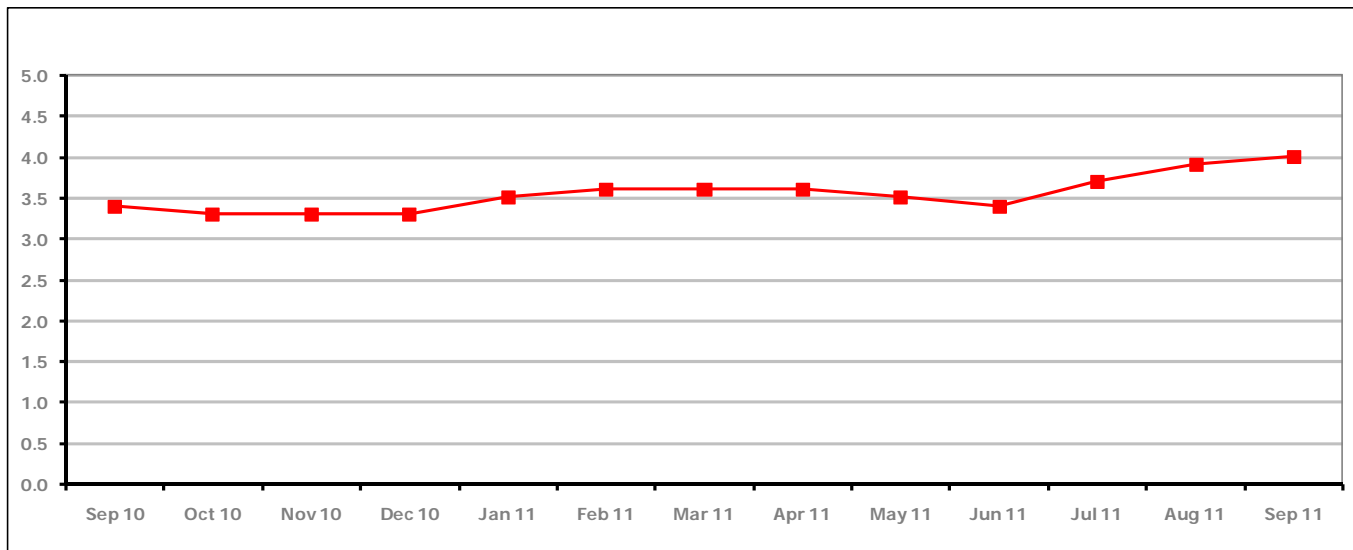


Figure 13 shows the claimant rate for Gloucester City increased in September 2011 to 4.0%.

Figure 14: Gloucester City claimants - Month on Month and Year on Year change

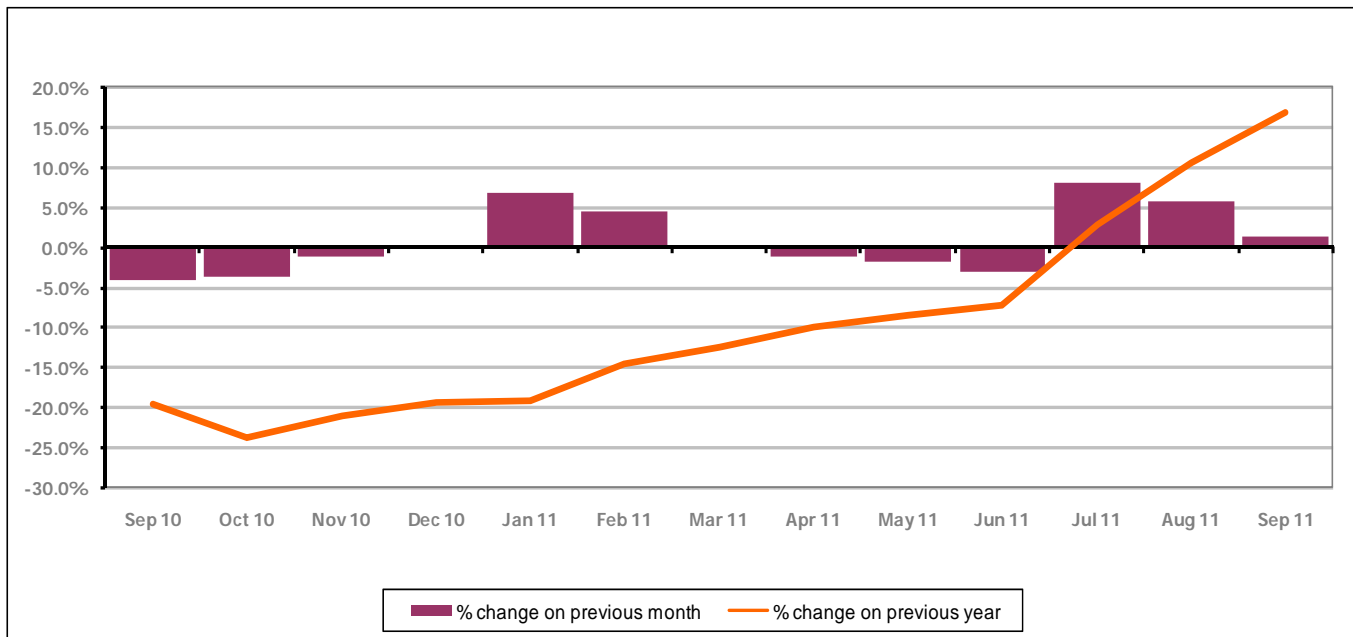


Figure 14 shows the monthly claimant count increased by +1.4% since August 2011. The change on the previous year has increased between August 2011 and September 2011 to +16.7%.

PART 4: LOCAL AUTHORITY DISTRICT AND WARD ANALYSIS

4.4 Gloucester City continued...

Figure 15: Claimant rates across Gloucester City wards - September 2011

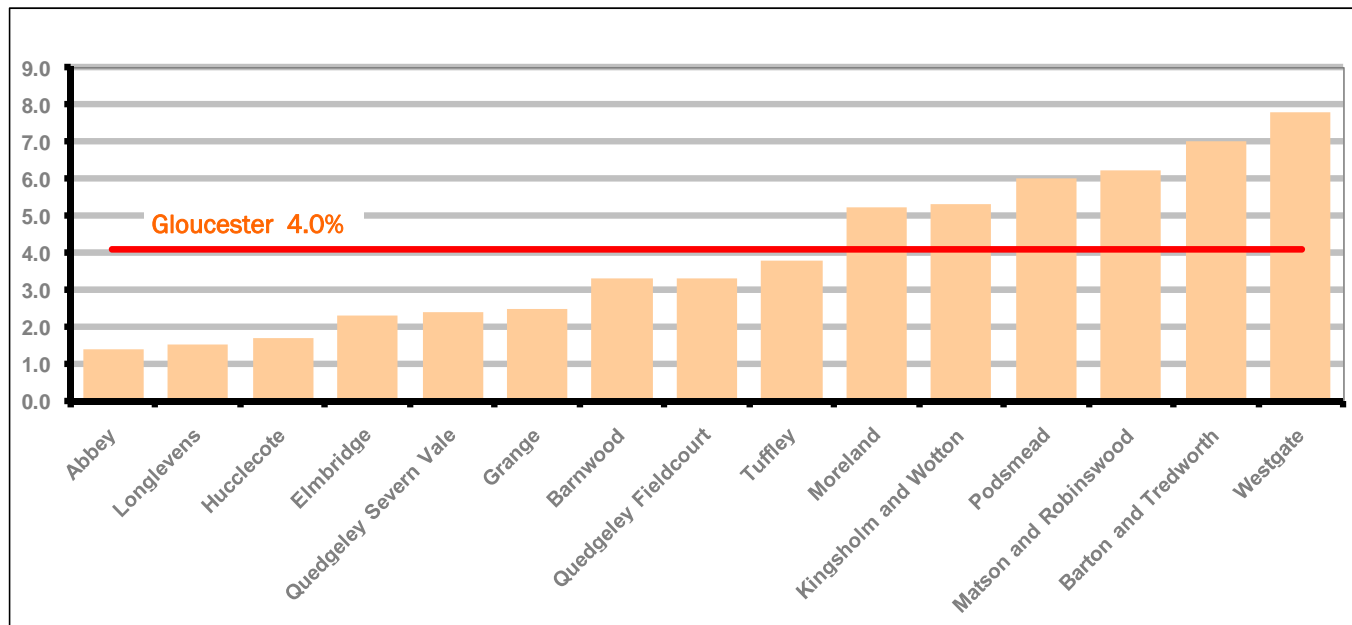
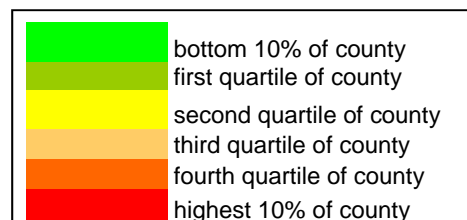


Figure 15 shows the claimant rates for Gloucester City district wards. The red line represents the average claimant rate across the City of 4.0%. Six wards lie above the average.

Table 8: Analysis of Claimant Count at Gloucester City ward level - September 2011

| District | Ward | Rate | Rank* |
|------------|-----------------------|------|-------|
| Gloucester | Abbey | 1.4 | 38 |
| Gloucester | Longlevens | 1.5 | 47 |
| Gloucester | Hucclecote | 1.7 | 65 |
| Gloucester | Elmbridge | 2.3 | 90 |
| Gloucester | Quedgeley Severn Vale | 2.4 | 93 |
| Gloucester | Grange | 2.5 | 96 |
| Gloucester | Barnwood | 3.3 | 115 |
| Gloucester | Quedgeley Fieldcourt | 3.3 | 115 |
| Gloucester | Tuffley | 3.8 | 124 |
| Gloucester | Moreland | 5.2 | 134 |
| Gloucester | Kingsholm and Wotton | 5.3 | 136 |
| Gloucester | Podsmead | 6.0 | 137 |
| Gloucester | Matson and Robinswood | 6.2 | 140 |
| Gloucester | Barton and Tredworth | 7.0 | 141 |
| Gloucester | Westgate | 7.8 | 142 |



* 1 = "best" and 142 = "worst"

Table 8 shows overall claimant rates for Gloucester City wards and their position relative to all wards in Gloucestershire.

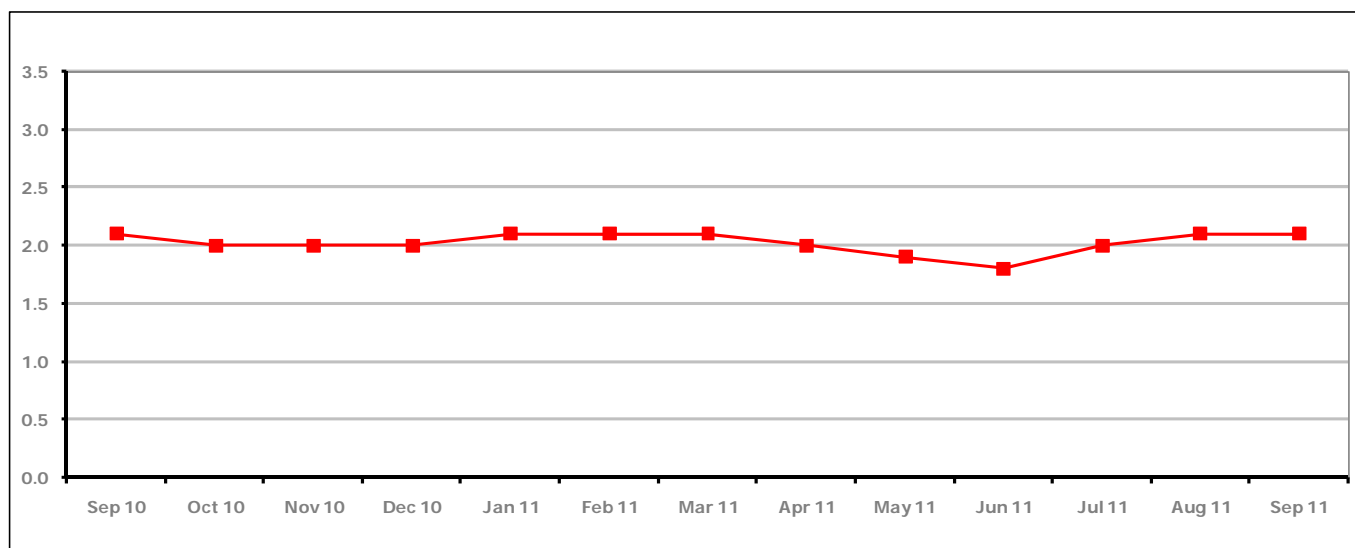
PART 4: LOCAL AUTHORITY DISTRICT AND WARD ANALYSIS**4.5 Stroud District****Claimant Rate and Claimant Count***Figure 16: Stroud District claimant rate over the last year*

Figure 16 shows the claimant rate for Stroud District remained the same as last month at 2.1%.

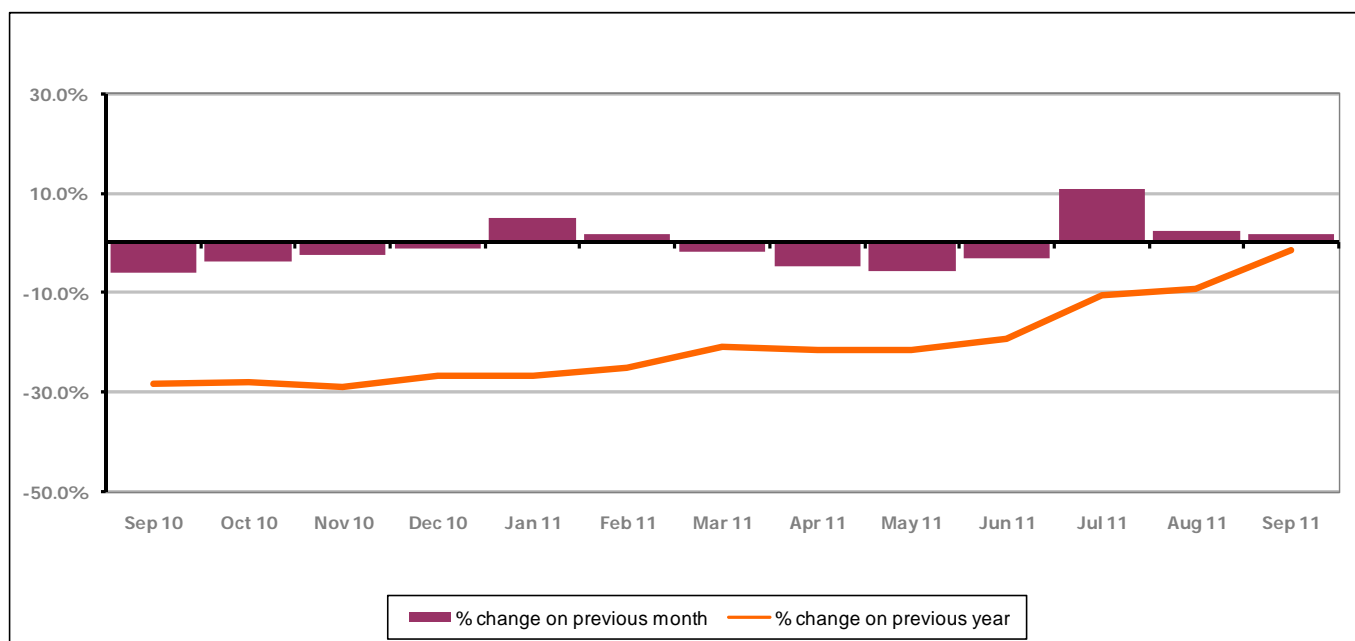
Figure 17: Stroud District claimants - Month on Month and Year on Year change

Figure 17 shows the monthly claimant count increased by +1.9% since August 2011. The change on the previous year has increased between August 2011 and September 2011 to -1.6%.

PART 4: LOCAL AUTHORITY AND DISTRICT ANALYSIS

4.5 Stroud District continued...

Figure 18: Claimant rates across Stroud District wards - September 2011

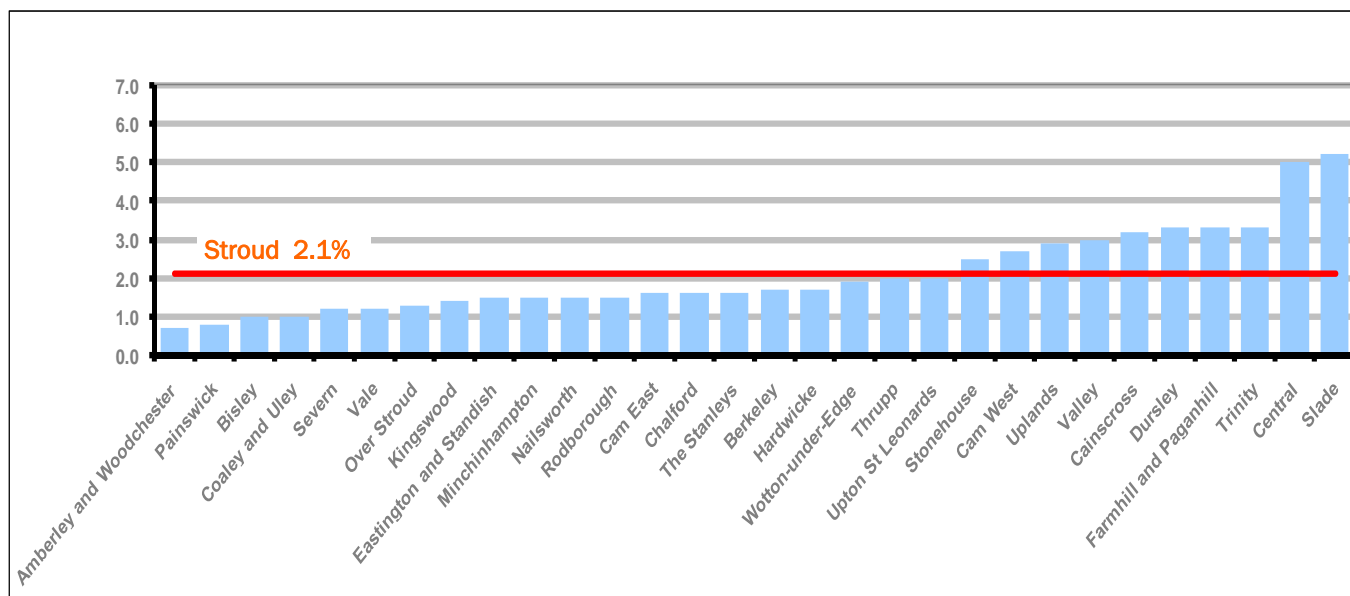
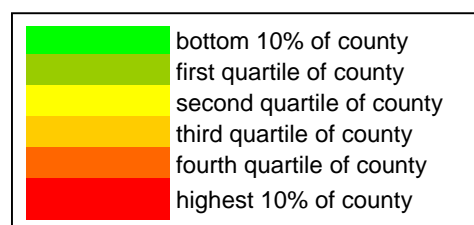


Figure 18 shows the claimant rates in Stroud District wards. The red line represents the average claimant rate across the District of 2.1%. Ten wards are above the average.

Table 9: Analysis of Claimant Count at Stroud District ward level - September 2011

| District | Ward | Rate | Rank* |
|----------|--------------------------|------|-------|
| Stroud | Amberley and Woodchester | 0.7 | 2 |
| Stroud | Painswick | 0.8 | 6 |
| Stroud | Bisley | 1.0 | 15 |
| Stroud | Coaley and Uley | 1.0 | 15 |
| Stroud | Severn | 1.2 | 26 |
| Stroud | Vale | 1.2 | 26 |
| Stroud | Over Stroud | 1.3 | 34 |
| Stroud | Kingswood | 1.4 | 38 |
| Stroud | Eastington and Standish | 1.5 | 47 |
| Stroud | Minchinhampton | 1.5 | 47 |
| Stroud | Nailsworth | 1.5 | 47 |
| Stroud | Rodborough | 1.5 | 47 |
| Stroud | Cam East | 1.6 | 57 |
| Stroud | Chalford | 1.6 | 57 |
| Stroud | The Stanleys | 1.6 | 57 |
| Stroud | Berkeley | 1.7 | 65 |
| Stroud | Hardwicke | 1.7 | 65 |
| Stroud | Wotton-under-Edge | 1.9 | 73 |
| Stroud | Thrupp | 2.0 | 77 |
| Stroud | Upton St Leonards | 2.0 | 77 |
| Stroud | Stonehouse | 2.5 | 96 |
| Stroud | Cam West | 2.7 | 100 |
| Stroud | Uplands | 2.9 | 103 |
| Stroud | Valley | 3.0 | 108 |
| Stroud | Cainscross | 3.2 | 113 |
| Stroud | Dursley | 3.3 | 115 |
| Stroud | Farmhill and Paganhill | 3.3 | 115 |
| Stroud | Trinity | 3.3 | 115 |
| Stroud | Central | 5.0 | 131 |
| Stroud | Slade | 5.2 | 134 |



* 1 = "best" and 142 = "worst"

Table 9 shows overall claimant rates for Stroud District wards and their position relative to all wards in Gloucestershire.

PART 4: LOCAL AUTHORITY DISTRICT AND WARD ANALYSIS

4.6 Tewkesbury District

Claimant Rate and Claimant Count

Figure 19: Tewkesbury District claimant rate over the last year

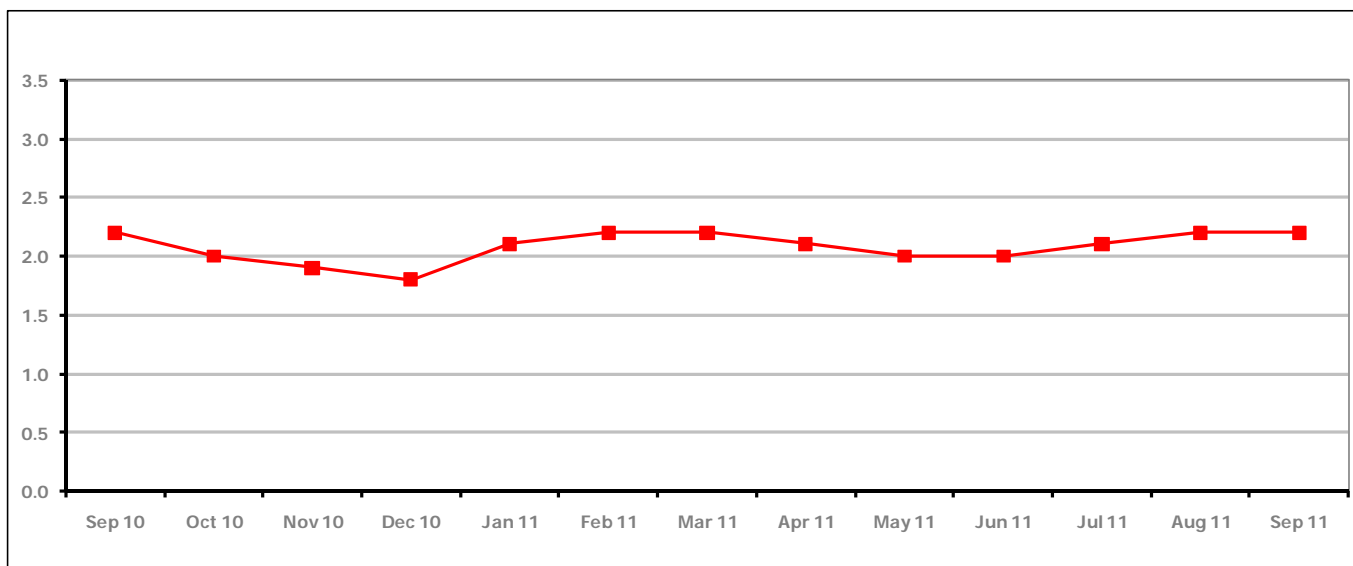


Figure 19 shows the claimant rate for Tewkesbury District remained the same as last month at 2.2%.

Figure 20: Tewkesbury District claimants - Month on Month and Year on Year change

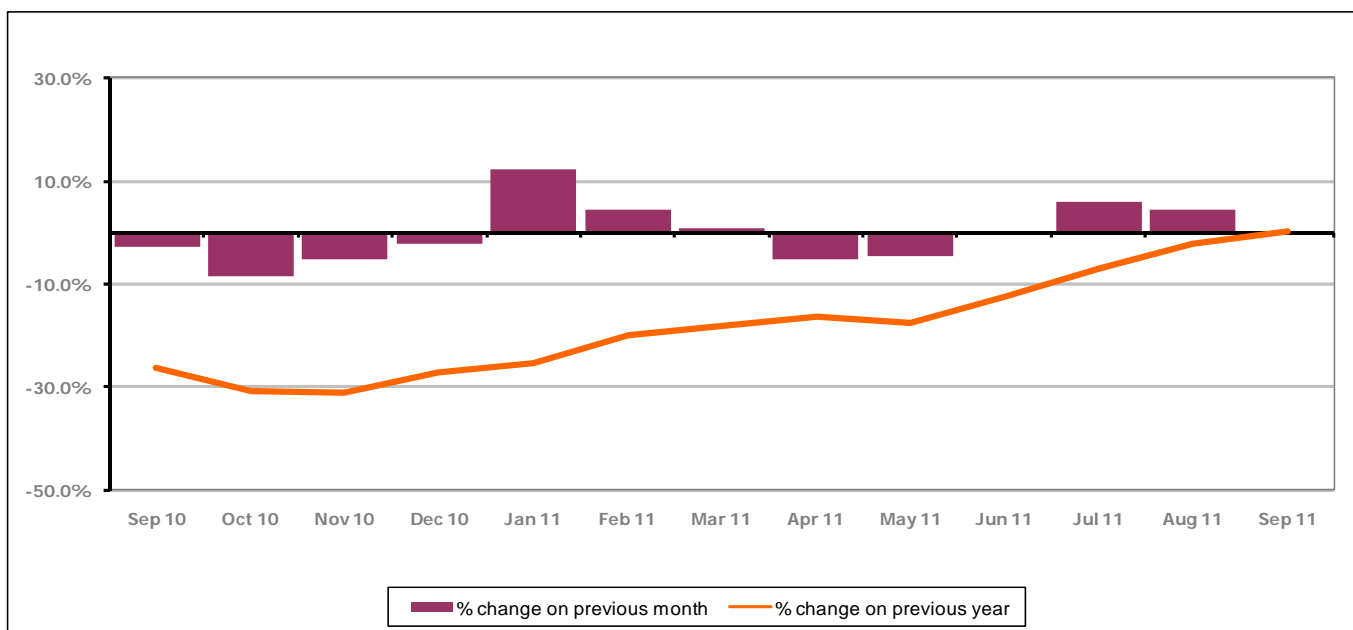


Figure 20 shows that the monthly claimant count decreased in September 2011 by -0.3%. The change on the previous year increased between September 2011 and August 2011 to +0.3%.

PART 4: LOCAL AUTHORITY AND DISTRICT ANALYSIS

4.6 Tewkesbury District continued...

Figure 21: Claimant rates across Tewkesbury District wards - September 2011

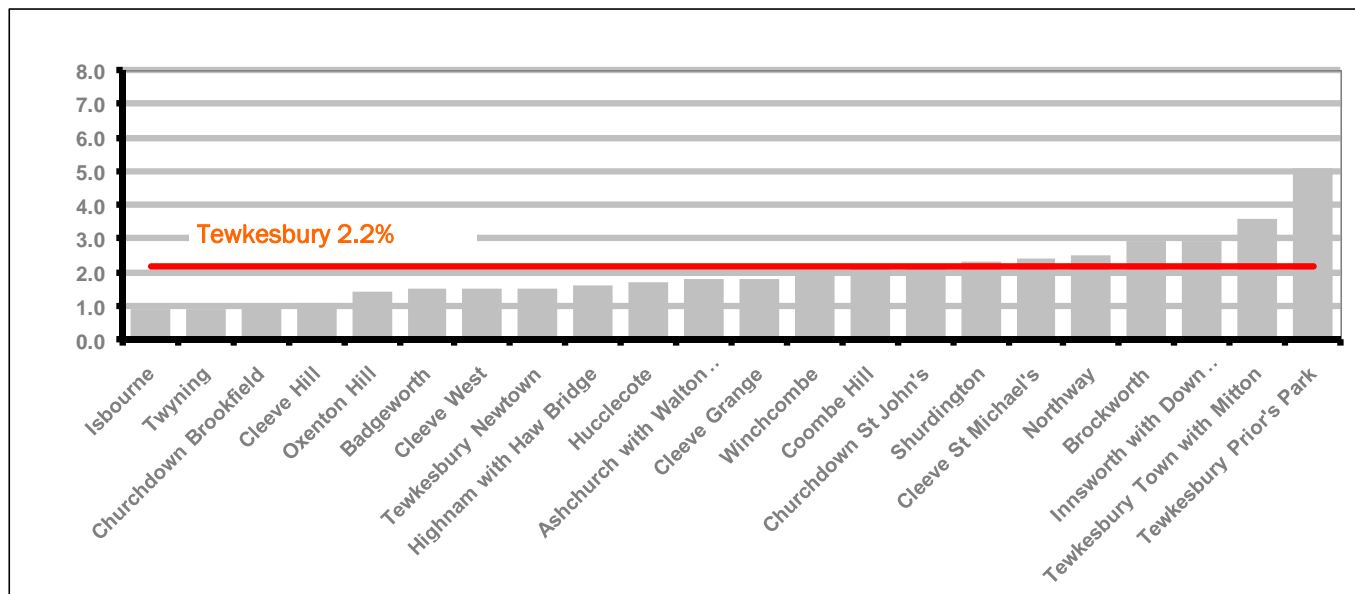
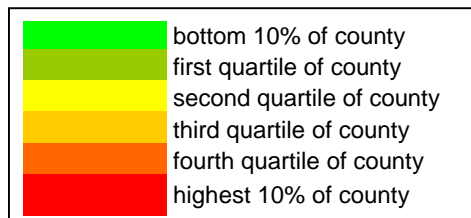


Figure 21 shows the claimant rates in Tewkesbury District wards. The red line represents the average claimant rate across the District of 2.2% and seven wards are above the average.

Table 10: Analysis of Claimant Count at Tewkesbury District level - September 2011

| District | Ward | Rate | Rank* |
|------------|-------------------------------|------|-------|
| Tewkesbury | Isbourne | 0.9 | 10 |
| Tewkesbury | Twynning | 0.9 | 10 |
| Tewkesbury | Churchdown Brookfield | 1.0 | 15 |
| Tewkesbury | Cleeve Hill | 1.1 | 20 |
| Tewkesbury | Oxenton Hill | 1.4 | 38 |
| Tewkesbury | Badgeworth | 1.5 | 47 |
| Tewkesbury | Cleeve West | 1.5 | 47 |
| Tewkesbury | Tewkesbury Newtown | 1.5 | 47 |
| Tewkesbury | Highnam with Haw Bridge | 1.6 | 57 |
| Tewkesbury | Hucclecote | 1.7 | 65 |
| Tewkesbury | Ashchurch with Walton Cardiff | 1.8 | 70 |
| Tewkesbury | Cleeve Grange | 1.8 | 70 |
| Tewkesbury | Winchcombe | 2.0 | 77 |
| Tewkesbury | Coombe Hill | 2.1 | 83 |
| Tewkesbury | Churchdown St John's | 2.2 | 86 |
| Tewkesbury | Shurdington | 2.3 | 90 |
| Tewkesbury | Cleeve St Michael's | 2.4 | 93 |
| Tewkesbury | Northway | 2.5 | 96 |
| Tewkesbury | Brockworth | 2.9 | 103 |
| Tewkesbury | Innsworth with Down Hatherley | 2.9 | 103 |
| Tewkesbury | Tewkesbury Town with Mitton | 3.6 | 122 |
| Tewkesbury | Tewkesbury Prior's Park | 5.1 | 132 |

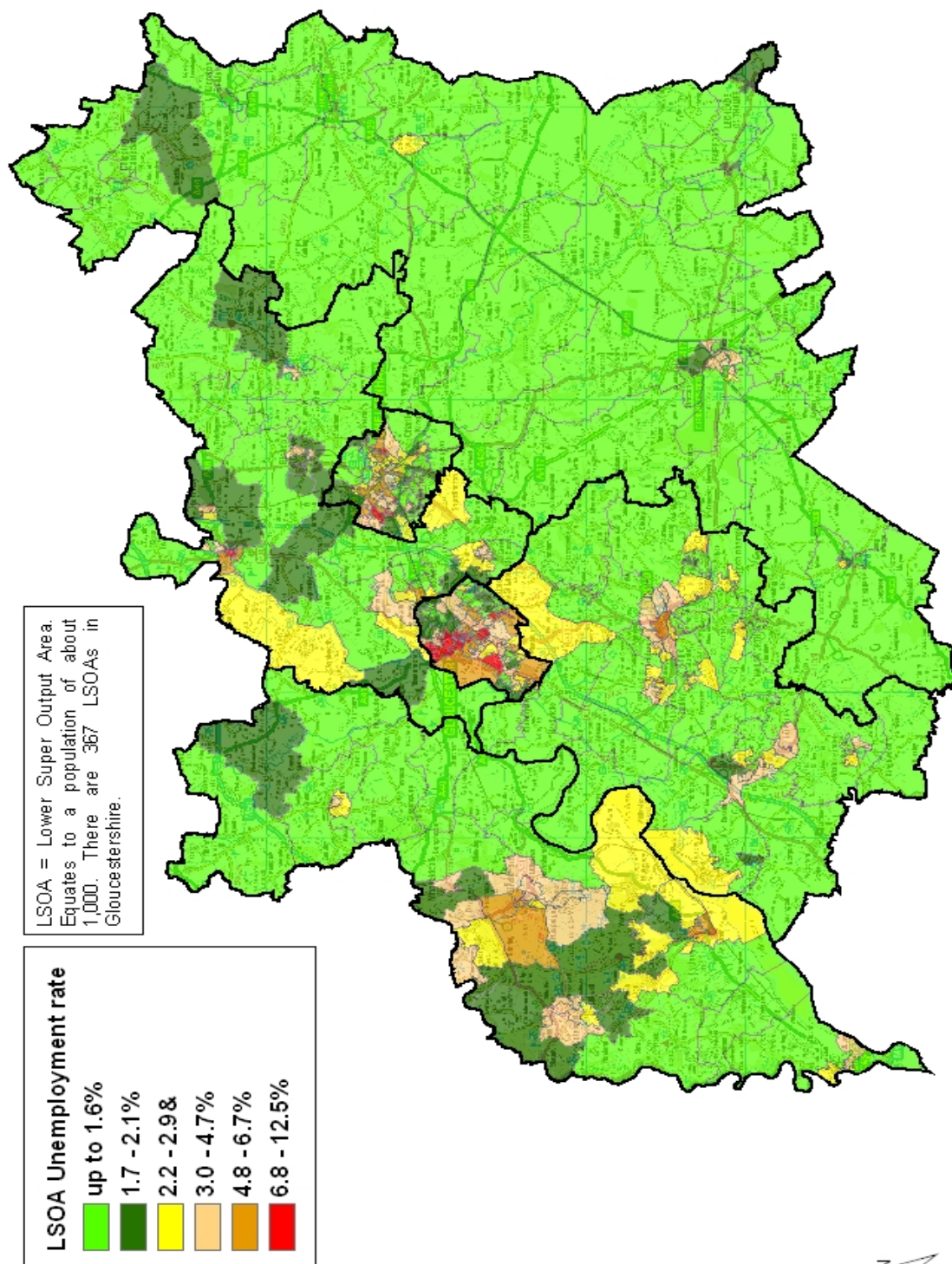


* 1 = "best" and 142 = "worst"

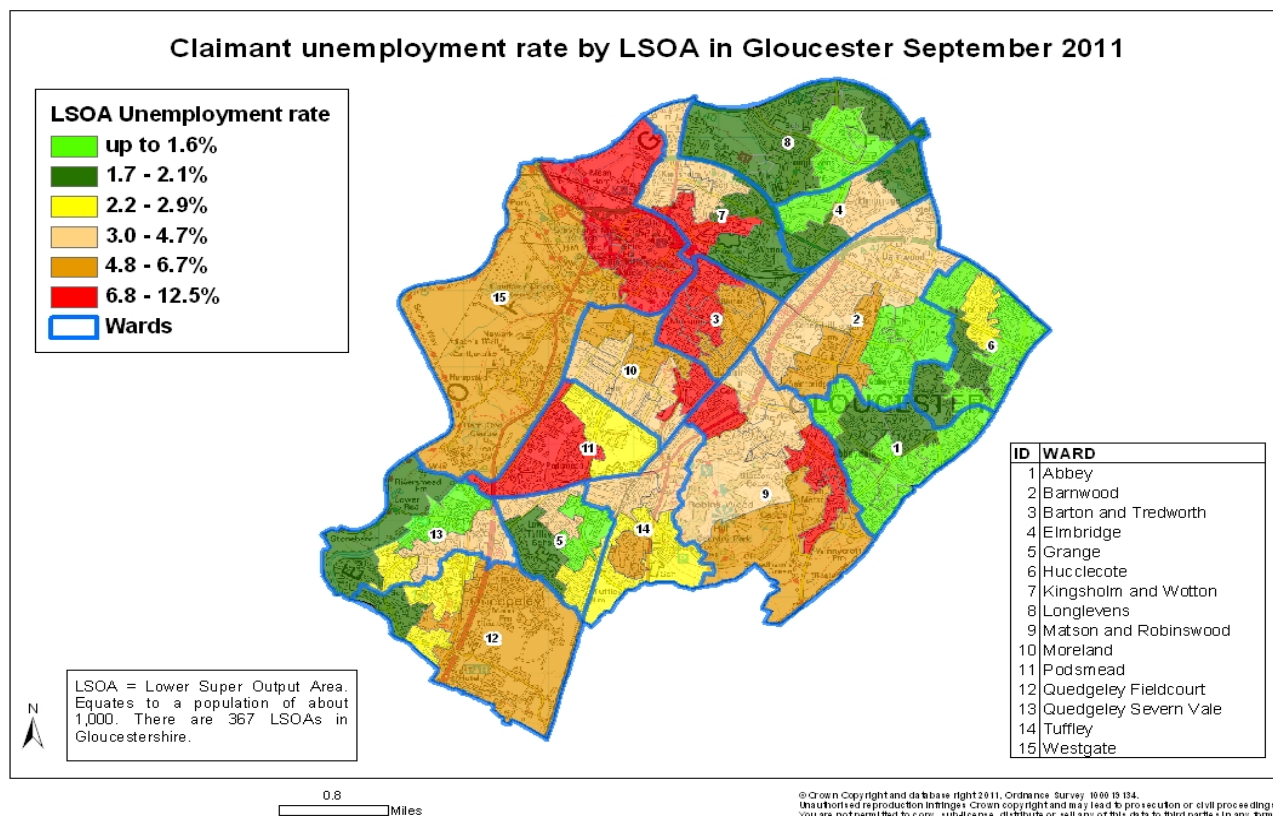
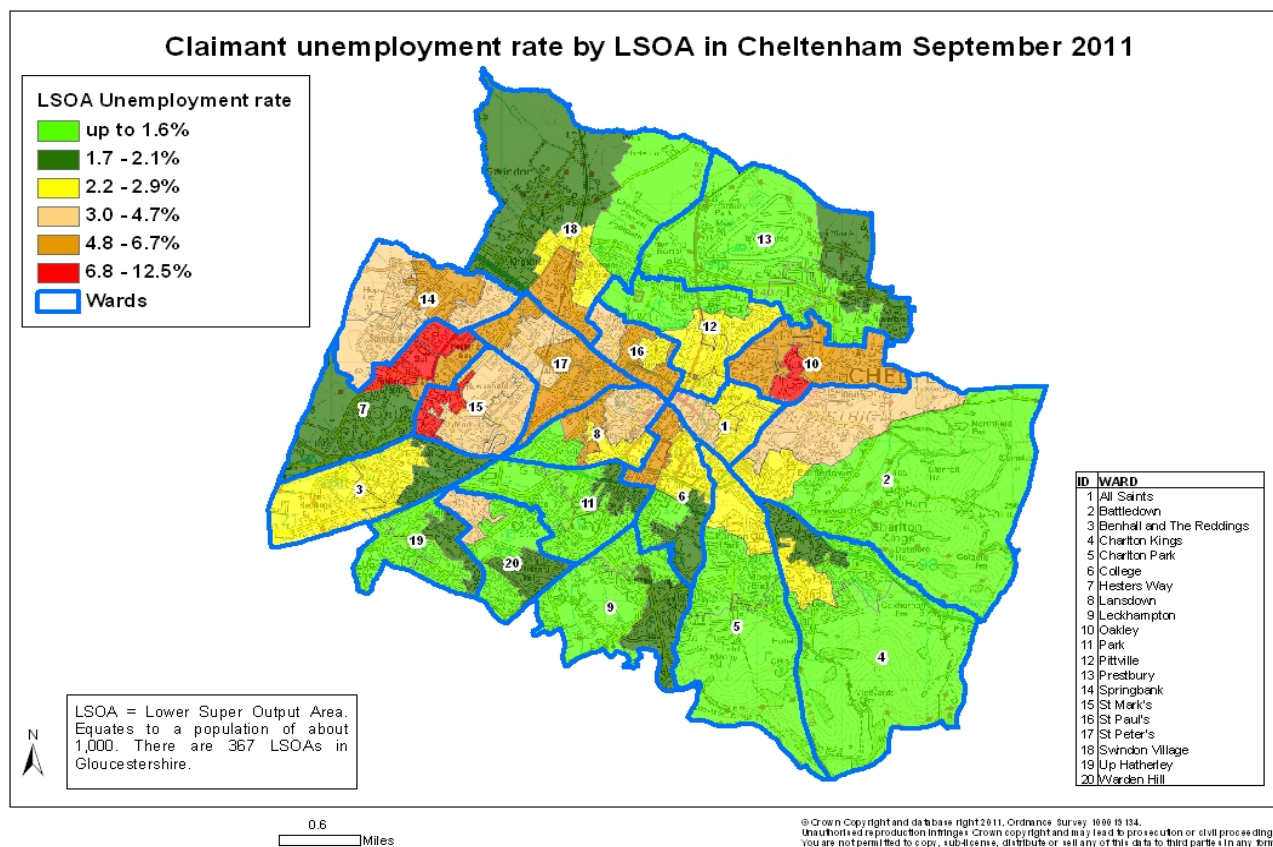
Table 10 shows overall claimant rates for Tewkesbury District wards and their position relative to all wards in Gloucestershire.

PART 5: MAP SHOWING DISTRIBUTION OF CLAIMANT RATE ACROSS GLOUCESTERSHIRE

Claimant unemployment rate by LSOA in Gloucestershire September 2011



PART 5: MAP SHOWING DISTRIBUTION OF CLAIMANT RATE ACROSS GLOUCESTERSHIRE



PART 6: YOUNG PEOPLE NOT IN EDUCATION, EMPLOYMENT OR TRAINING (NEET) IN GLOUCESTERSHIRE

Data provided by Prospects, the Connexions service in Gloucestershire on the situation of young people (16-18) in Gloucestershire who are not in education, employment or formal training.

Connexions Gloucestershire is required to report performance with the 16-18 age range against nationally defined criteria for counting the NEET group. The NEET group includes young people actively seeking education, employment or training as well as those young people who are either not yet ready or who are unable to access these opportunities because of their personal circumstances. The figures quoted below include young people in both of these categories.

Summary

As at the end of September 2011 there were 724 young people aged 16-18 not in education, employment or training in Gloucestershire and this figure translates into an adjusted (*) 16-18 NEET population of 5.6%. The total number of NEET increased by 66 young people in September 2011 compared to August 2011. All districts saw an increase in their NEET figure.

Total NEET Group by District Area

September 2011 NEET Data

| | Cheltenham | Cotswold | Forest | Gloucester | Stroud | Tewkesbury | Total |
|----------------|------------|----------|--------|------------|--------|------------|-------|
| Number of NEET | 163 | 51 | 107 | 197 | 106 | 100 | 724 |
| Cohort | 3058 | 2526 | 2542 | 5408 | 3285 | 2292 | 19111 |
| % NEET | 5.3% | 2.0% | 4.2% | 3.6% | 3.2% | 4.4% | 5.6% |

If you would like to receive any further information on Gloucestershire's NEET strategy then please contact Ruth.Critchlow@gloucestershire.gov.uk or telephone 01452 551267.

(*) Adjustment includes a proportion of young people aged 16-18 whose outcomes are not-known to Connexions Gloucestershire