

# Attendance data and updates

- Autumn Term 2024/25 data
- Penalty Notices
- Part-time Timetables
- Focus on... *Deprivation and school absence*

**Laura Berry**

Principal Data Analyst

Education Data, Analysis and Insights Team

Mail: [EducationDataHub@Gloucestershire.gov.uk](mailto:EducationDataHub@Gloucestershire.gov.uk)



Accountable



Integrity



Empower



Respect



Excellence



# Latest publicly-available data



As derived from school census

School-level absence (with reasons) and Persistent & Severe Absentee numbers

...aggregated to:

- Phase and District-level*
- Phase and LA-level*
- Phase and regional-level*
- Phase and National*

**Autumn Term** collected January, published [May](#)  
**Autumn & Spring** terms collected May, published [October](#)  
**Whole academic year** collected October, published [March](#)

As derived from View Your Education Data (VYED)

Absence (Auth / Unauth) and Persistent Absentee numbers

...aggregated to:

- Phase and District-level*
- Phase and LA-level*
- Phase and regional-level*
- Phase and National*

Collected **daily** from schools (via WONDE)  
[Fortnightly](#) for previous week / **academic year to date**  
**Termly** Reports

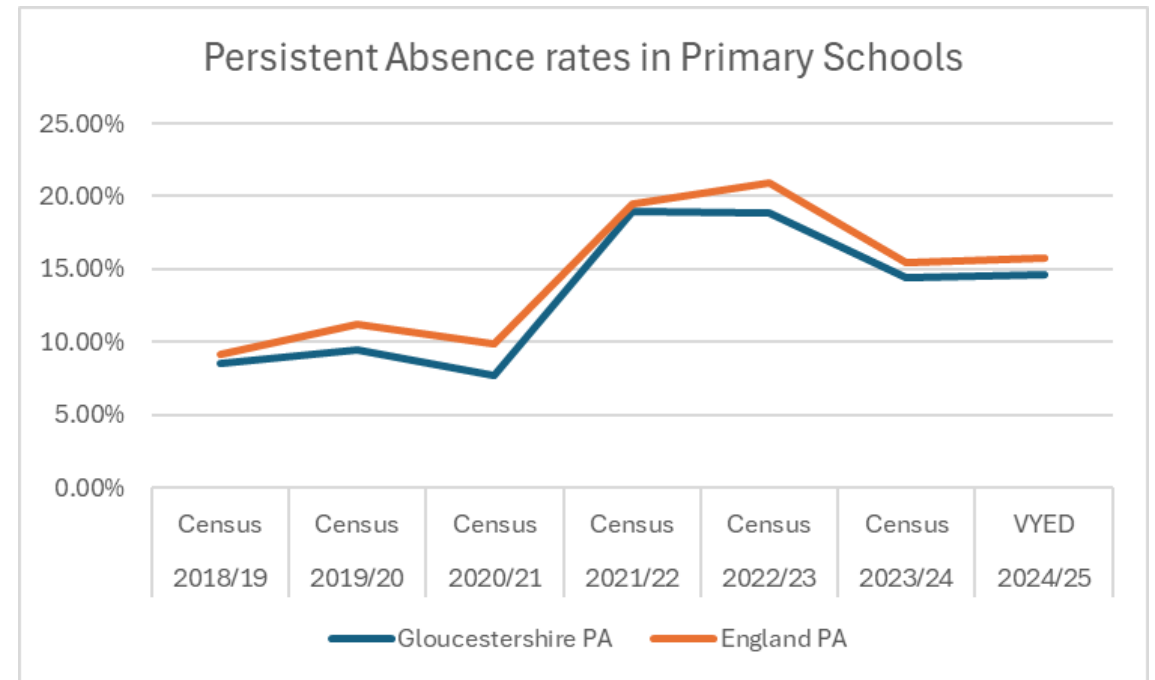
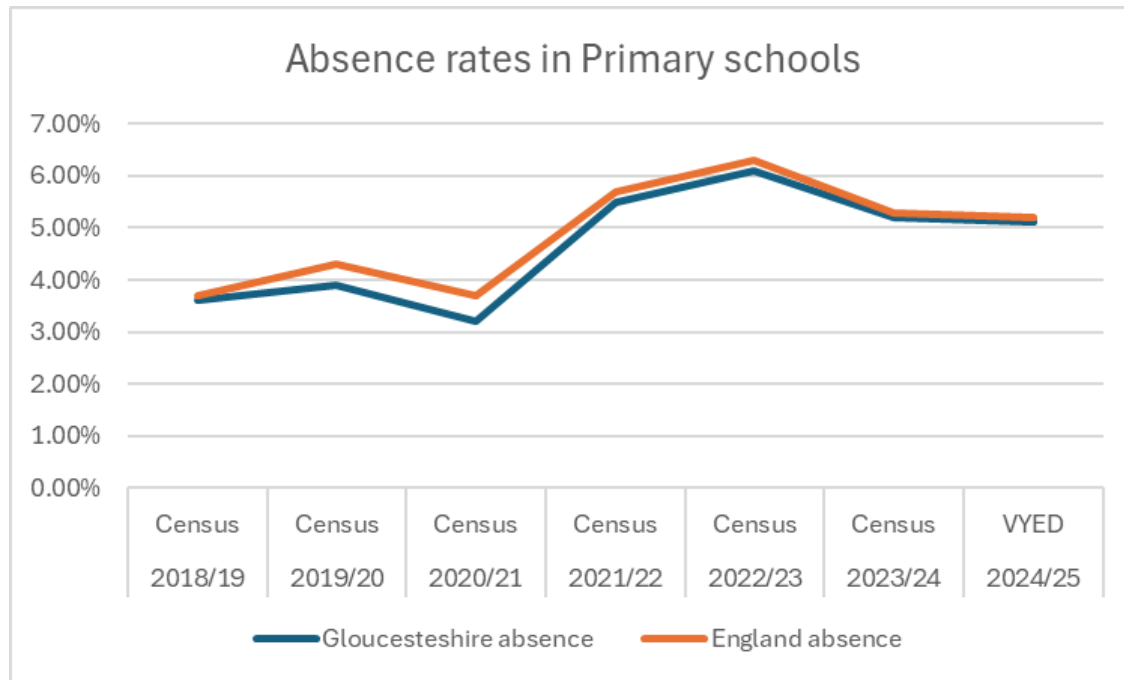
# Latest publicly-available data

Overall absence and Persistent Absence (PA) rates  
([Primary Autumn Terms only](#)):

	2018/19 Census	2019/20 Census	2020/21 Census	2021/22 Census	2022/23 Census	2023/24 Census	<a href="#">2024/25 VYED</a>
Gloucestershire absence %	3.6%	3.9%	3.2%	5.5%	6.1%	5.2%	5.1%
England absence %	3.7%	4.3%	3.7%	5.7%	6.3%	5.3%	5.2%
Gloucestershire PA %	8.5%	9.5%	7.7%	19.0%	18.9%	14.4%	14.6%
England PA %	9.2%	11.2%	9.9%	19.5%	20.9%	15.4%	15.8%
Gloucestershire SA %	0.3%	0.3%	0.6%	0.5%	0.6%	0.7%	n/a
England SA %	0.4%	0.4%	0.9%	0.6%	0.7%	0.8%	n/a

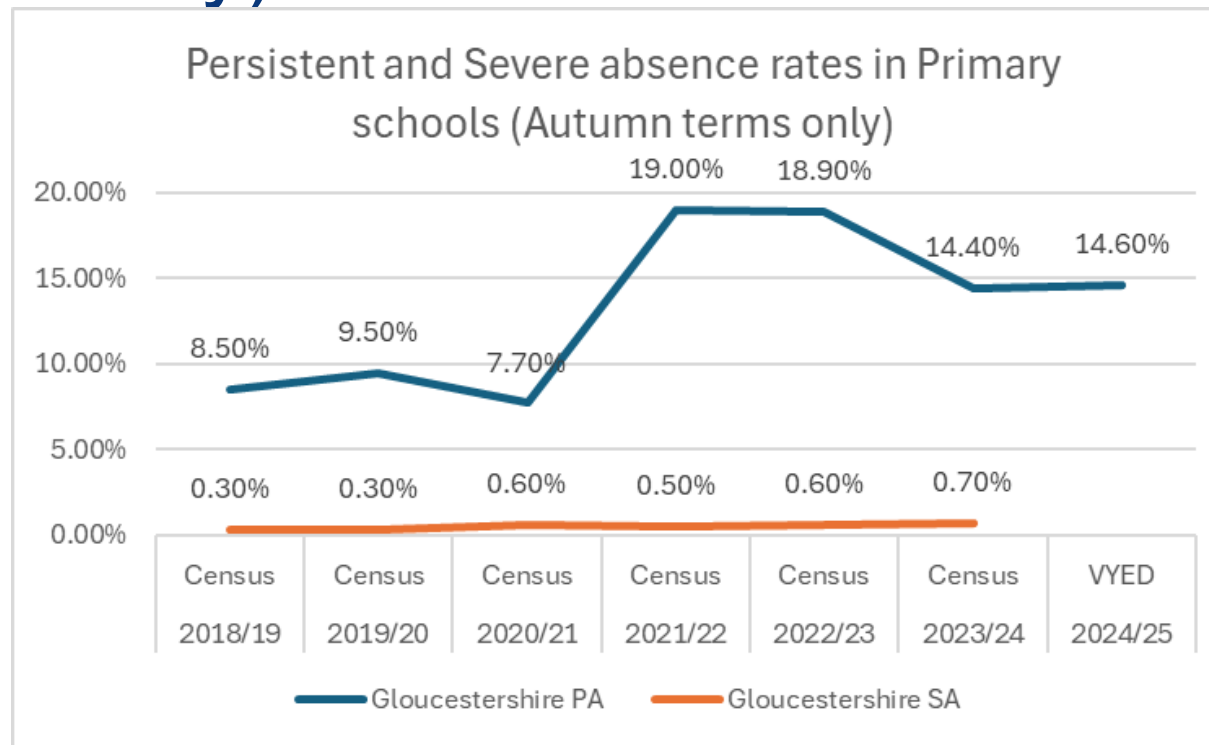
# Latest publicly-available data

Overall absence and Persistent Absence (PA) rates  
(Primary Autumn terms only):



# Latest publicly-available data

## Persistent Absence vs Severe Absence rates (Primary Autumn Terms only):



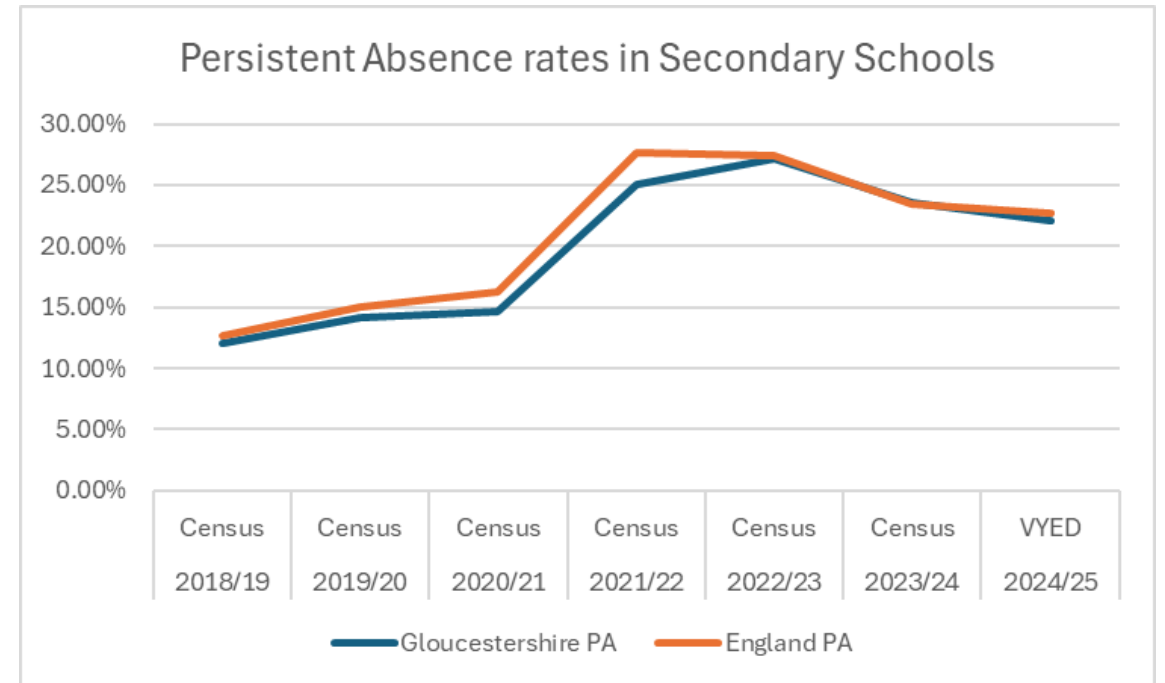
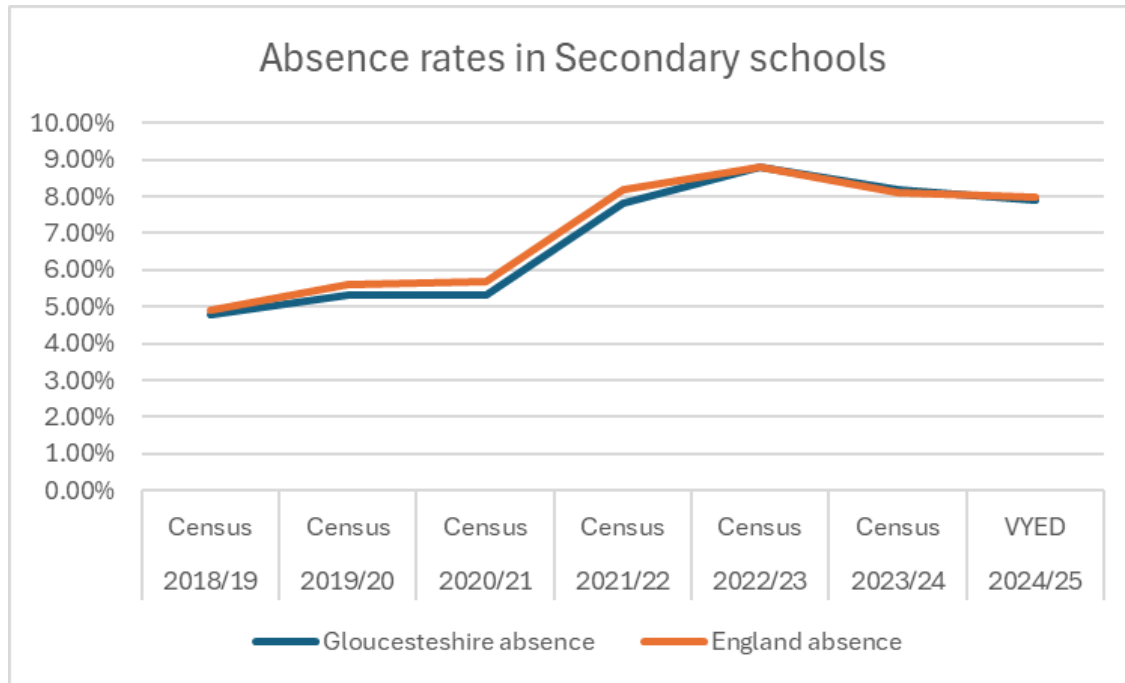
# Latest publicly-available data

Overall absence and Persistent Absence (PA) rates  
([Secondary Autumn Terms only](#)):

	2018/19 Census	2019/20 Census	2020/21 Census	2021/22 Census	2022/23 Census	2023/24 Census	<a href="#">2024/25 VYED</a>
Gloucestershire absence %	4.8%	5.3%	5.3%	7.8%	8.8%	8.2%	7.9%
England absence %	4.9%	5.6%	5.7%	8.2%	8.8%	8.1%	8.0%
Gloucestershire PA %	12.0%	14.2%	14.6%	25.1%	27.1%	23.6%	22.1%
England PA %	12.7%	15.0%	16.3%	27.7%	27.4%	23.4%	22.7%
Gloucestershire SA %	1.0%	1.2%	1.6%	2.1%	2.6%	3.0%	n/a
England SA %	1.1%	1.3%	1.7%	2.1%	2.8%	3.1%	n/a

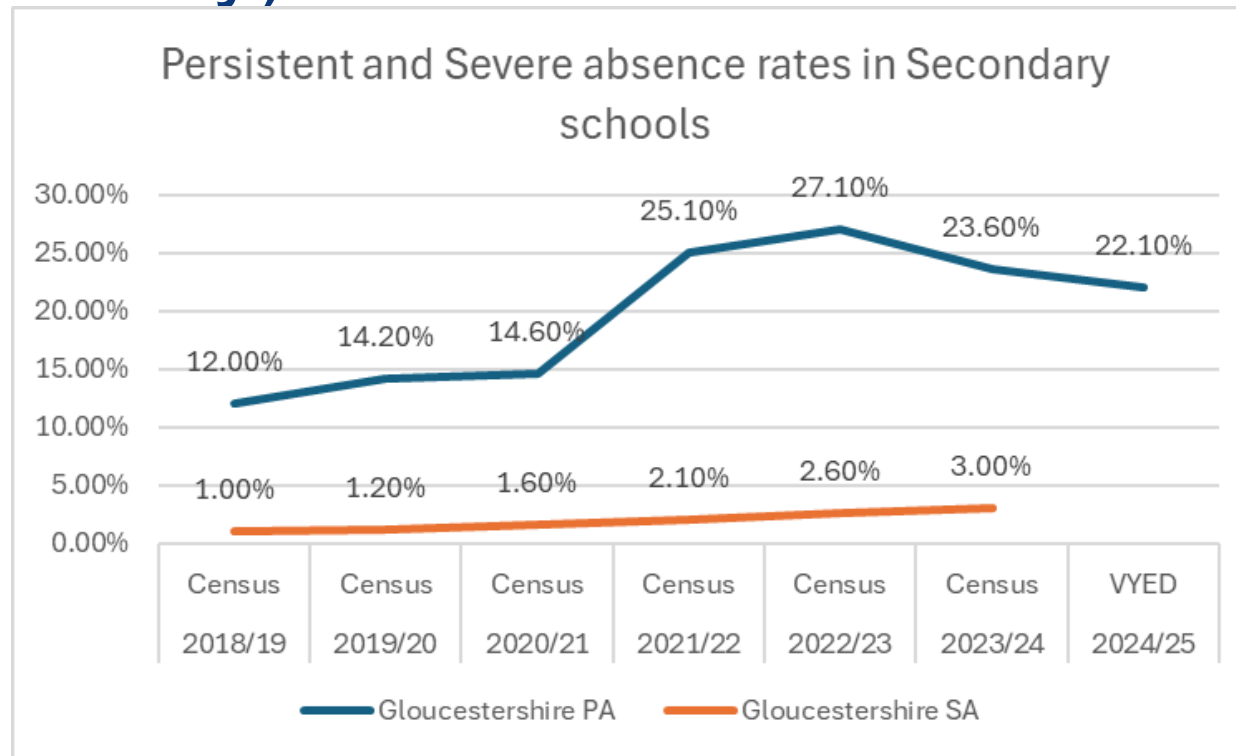
# Latest publicly-available data

## Overall absence and Persistent Absence (PA) rates (Secondary Autumn Terms only):



# Latest publicly-available data

## Persistent Absence vs Severe Absence rates (Secondary Autumn Terms only):



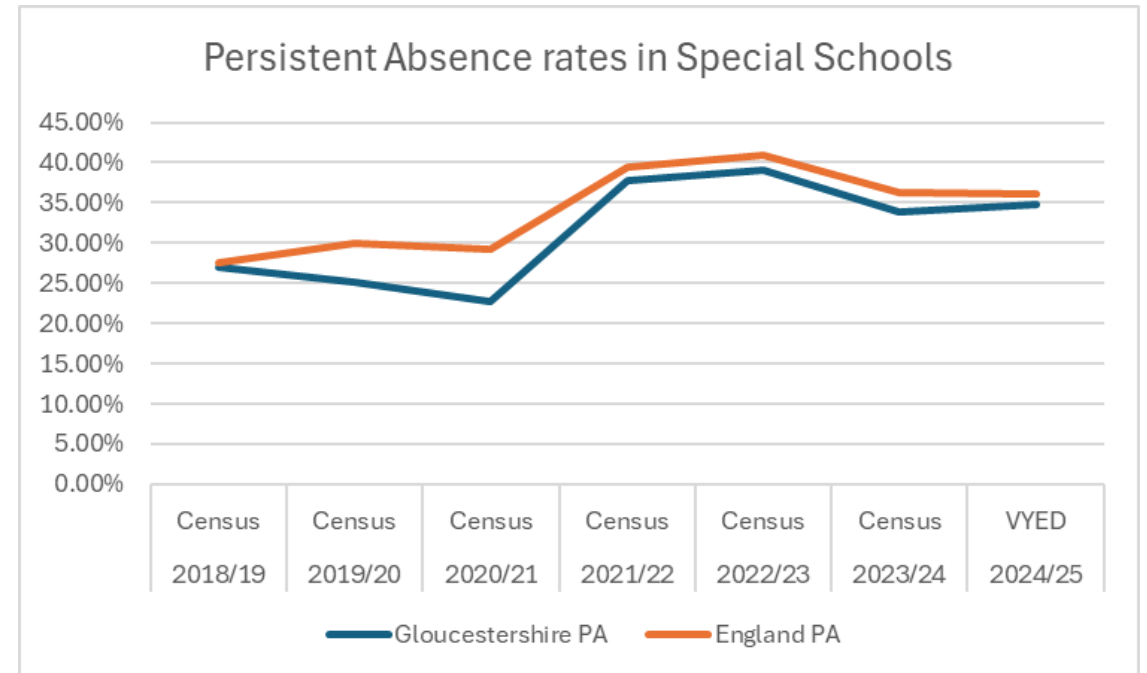
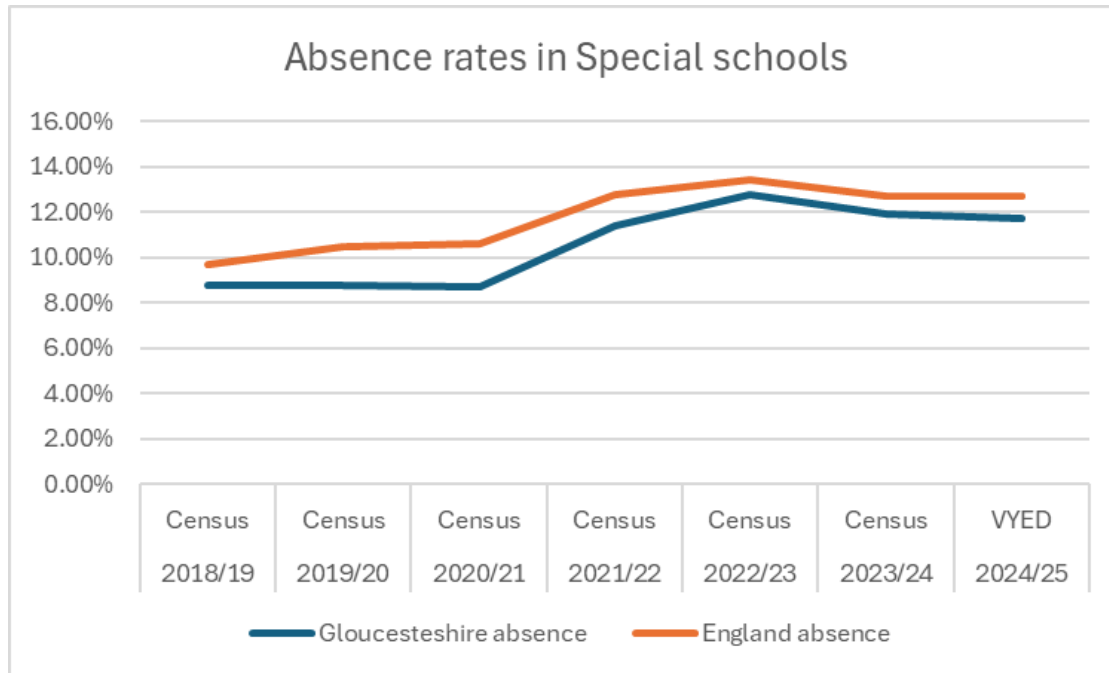
# Latest publicly-available data

Overall absence and Persistent Absence (PA) rates  
([Special Autumn Terms only](#)):

	2018/19 Census	2019/20 Census	2020/21 Census	2021/22 Census	2022/23 Census	2023/24 Census	<a href="#">2024/25 VYED</a>
Gloucestershire absence %	8.8%	8.8%	8.7%	11.4%	12.8%	11.9%	11.7%
England absence %	9.7%	10.5%	10.6%	12.8%	13.4%	12.7%	12.7%
Gloucestershire PA %	26.9%	25.1%	22.8%	37.8%	39.1%	33.9%	34.8%
England PA %	27.6%	30.0%	29.2%	39.4%	40.9%	36.2%	36.0%
Gloucestershire SA %	2.6%	3.4%	3.4%	3.3%	5.5%	5.7%	n/a
England SA %	4.1%	4.4%	5.2%	5.5%	5.8%	6.2%	n/a

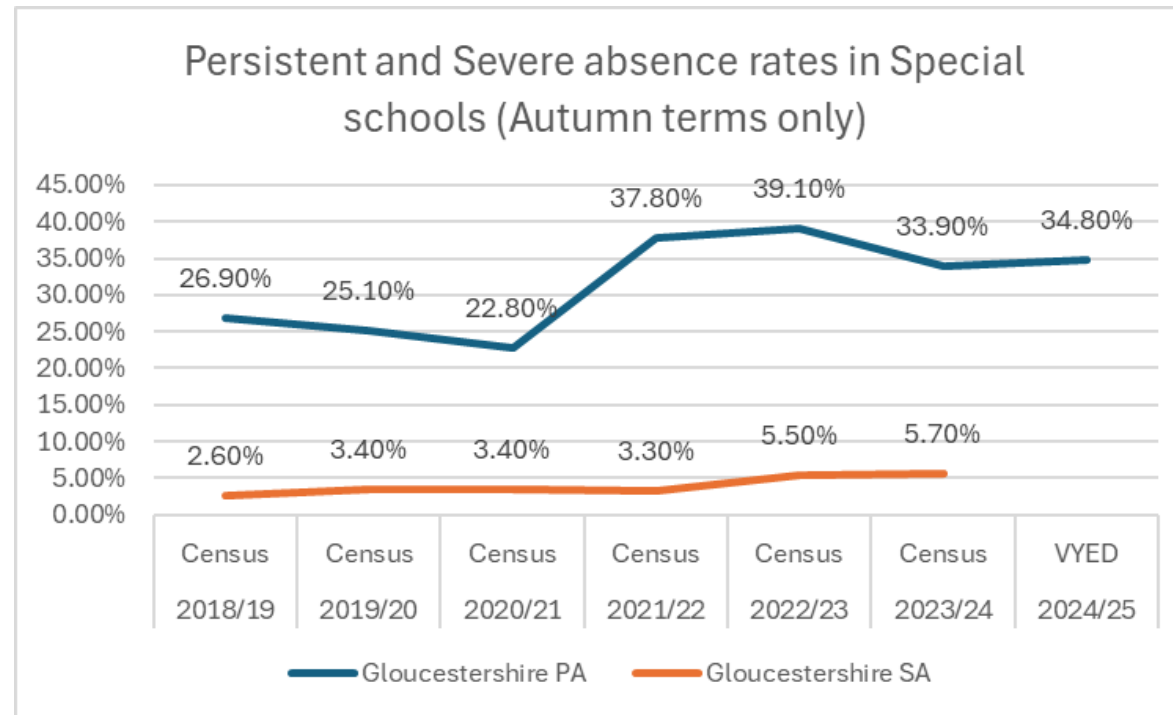
# Latest publicly-available data

Overall absence and Persistent Absence (PA) rates  
(Special Autumn terms only):



# Latest publicly-available data

## Persistent Absence vs Severe Absence rates (Special Autumn Terms only):



# Latest publicly-available data

## NEW Attendance codes - Autumn 2024 onwards

### New (and changed) Codes

- J1 Replaces J and has changed from an Approved Educational Activity to **Authorised Absence**.
- C Leave of Absence for exceptional circumstance (Guidance changed for this Code)
- B Attending any other approved educational activity (**schools MUST record nature of activity**)
- K Attending education provision arranged by the Local Authority (**schools MUST record nature of activity**)
- Q Unable to attend the school because of access arrangements.
- C2 Leave of absence for a compulsory school age pupil subject to a part-time timetable
- C1 Leave of Absence for the purpose of participating in a regulated performance (Or employment paid or unpaid, Continue to use W for Work Experience)
- Y1 Unable to attend due to transport normally provided not being available
- Y2 Unable to attend due to widespread disruption to travel
- Y3 Unable to attend due to part of the school premises being closed
- Y4 Unable to attend due to whole school being closed
- Y5 Unable to attend due as pupil is in criminal justice detention
- Y6 Absent in accordance with public health guidance or Law
- Y7 Unable to attend because of other unavoidable Cause (**schools MUST record nature of activity**)

Inactive  
Codes:  
H, Y and J



# Latest publicly-available data

## NEW Attendance codes - Autumn 2024 onwards

Autumn 2023/24 (published):

Authorised Absence Rate = 5.22% (291,378 days)  
Unauthorised Absence Rate = 1.47% (82,198 days)

H-code = 0.06% (3,572 days)  
G-code 0.37% (20,744 days)

C-code = 0.54% (30,419 days)

J-code = ?? days

Autumn 2024/25 (local):

Authorised Absence Rate = 5.28% (339,842 days)  
Unauthorised Absence Rate = 1.40% (89,933 days)

H-code = 0.00% (0 days)  
G-code 0.34% (21,927 days)

C-code = 0.51% (32,962 days)  
C1-code = 0.00% (172 days)  
C2-code = 0.31% (19,651 days)

*TOTAL C = 0.81% (52,440 days)*

J1-code = 0.01% (718 days)

# Latest publicly-available data

## NEW Attendance codes - Autumn 2024 onwards

Autumn 2023/24:

Y-code = 10,883 days

Autumn 2024/25:

Y1 = 702 days

Y2 = 964 days

Y3 = 3477 days

Y4 = 7563 days

Y5 = 12 days

Y6 = 3 days

Y7 = 9,268 days

TOTAL Y-codes = 21,991 days

K-code = 1,609 days

Q-code = 161 days

# Penalty Notices

<b>Outcomes of PN's requested / issued</b>				
<i>(whole academic years and current academic year to date)</i>				
	2021/22	2022/23	2023/24	2024/25
Requested	895	2368	3311	1192
Total Issued	707	1870	2843	695
<b>% issued</b>	<b>79.0%</b>	<b>79.0%</b>	<b>85.9%</b>	<b>58.3%</b>
Paid	548	1570	2496	408
Withdrawn	154	267	274	75
Unpaid - Prosecuted	2	21	10	85
Unresolved	3	12	63	127
<b>% paid</b>	<b>77.5%</b>	<b>84.0%</b>	<b>87.8%</b>	<b>58.7%</b>

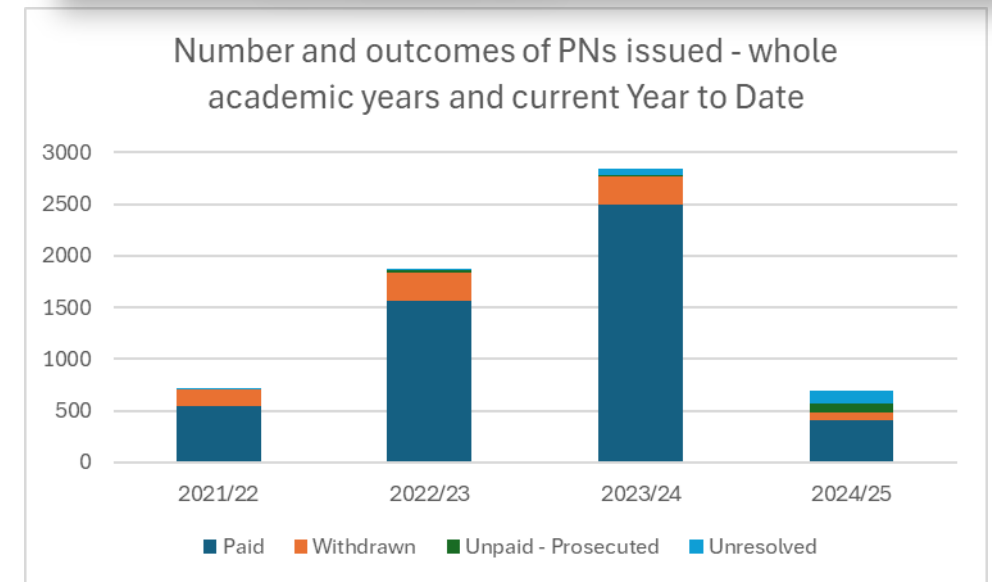
England: 4.7 PN's issued per 100 pupils in 2018/19  
2.1 in Gloucestershire

England: 0.6 PN's issued per 100 pupils in 2020/21  
0.2 in Gloucestershire

England: 3.0 PN's issued per 100 pupils in 2021/22  
0.9 in Gloucestershire

England: 5.4 PN's issued per 100 pupils in 2022/23  
2.3 in Gloucestershire

England: 6.6 PN's issued per 100 pupils in 2023/24  
3.3 in Gloucestershire



# Part-time timetables

## Code C2: Leave of absence for a compulsory school age pupil subject to a part-time timetable

338. All pupils of compulsory school age are entitled to a full-time education. In very exceptional circumstances, where it is in a pupil's best interests, there may be a need for a temporary part-time timetable to meet their individual needs in line with paragraphs 65 – 70.

339. Schools maintained by a local authority and special schools not maintained by a local authority can grant a leave of absence, under regulation 11(6) to temporarily reduce the timetable of a pupil of compulsory school age to part-time, if the school and a parent who the pupil normally lives with have agreed that, exceptionally, the pupil should temporarily be educated only part-time and have agreed the times and dates when the 84 pupil will, during the period of temporary part-time education, be expected to attend the school.

340. Schools that are not required to follow regulation 11, must still use this code to record when a pupil is absent with leave because they are subject to a part-time timetable in line with an agreement between the school and a parent the pupil normally lives with that the pupil should temporarily be educated part-time.

341. Where a pupil is receiving a full-time education, but only part-time at the school in question (e.g. dual registration, part-time unregistered alternative provision or flexischooling) this code must not be used and the appropriate code for why the pupil is not in school for that session should be used.

342. This code is classified for statistical purposes as **authorised absence**

# Part-time timetables

Number of Reports of Amended Timetables: (previous whole academic years, current academic year to date)							
		2022/23	% of NOR	2023/24	% of NOR	2024/25	% of NOR
Primary	Total	455	1.0%	744	1.6%	331	0.7%
	Reduced Hours	412	0.9%	681	1.4%	291	0.6%
	Alternative Providers	43	0.1%	63	0.1%	40	0.1%
Secondary	Total	774	1.8%	970	2.2%	254	0.6%
	Reduced Hours	590	1.4%	734	1.7%	215	0.5%
	Alternative Providers	184	0.4%	236	0.5%	39	0.1%
Total (Spec & A	Total	1266	1.4%	1759	1.9%	609	0.7%
	Reduced Hours	1030	1.1%	1444	1.6%	526	0.6%
	Alternative Providers	236	0.3%	315	0.3%	83	0.1%

ALL PTTT for current academic year by SEN status (at start of PTTT unless		PTTT Reduced Hours		PTTT Alternative Providers		TOTAL	
Total number individuals with at least 1 report of PTTT		384		77		461	
Number of individual pupils recorded with at least 1 PTTT with EHCP		114		48		162	
Number of Individual pupils recorded with at least 1 PTTT with SEN Support		1		0		1	
Number pupils with at least 1 PTTT with No identified SEN		269		29		298	
Number pupils with at least 1 PTTT undergoing assessment at start of PTTT		15		1		16	
Number pupils with at least 1 PTTT undergoing assessment		8		1		9	

# Part-time timetables

	Number of Reports of Amended Timetables	Number of pupils with C2 coded absence
Primary	331	293
Secondary	254	599
Spec & APS	24	345
<b>TOTAL</b>	<b>609</b>	<b>1237</b>

<b>Number of C2 coded absences</b>	<b>Number of pupils</b>
<b>1/2 day</b> (1 session)	<b>128</b>
<b>1 to 5 days</b> (2 to 10 sessions)	<b>366</b>
<b>5 to 10 days</b> (11 to 20 sessions)	<b>195</b>
<b>10 to 15 days</b> (21 to 30 sessions)	<b>115</b>
<b>15 to 20 days</b> (31 to 40 sessions)	<b>94</b>
<b>20 to 25 days</b> (41 to 50 sessions)	<b>70</b>
<b>25 to 30 days</b> (51 to 60 sessions)	<b>95</b>
<b>30 to 35 days</b> (61 to 70 sessions)	<b>53</b>
<b>35 to 40 days</b> (71 to 80 sessions)	<b>32</b>
<b>40 to 45 days</b> (81 to 90 sessions)	<b>27</b>
<b>45 to 50 days</b> (91 to 100 sessions)	<b>17</b>
<b>50 to 55 days</b> (101 to 110 sessions)	<b>13</b>
<b>55 to 60 days</b> (111 to 120 sessions)	<b>14</b>
<b>60 to 65 days</b> (121 to 130 sessions)	<b>11</b>
<b>65 to 70 days</b> (131 to 140 sessions)	<b>4</b>
<b>70 to 75 days</b> (141 to 150 sessions)	<b>3</b>

Gloucestershire County Council homepage

Select Language

Schoolsnet

Search the Schoolsnet website

Schoolsnet / Your Pupils / Attendance / Part-time and Alternative Provision Timetables

## Part-time and Alternative Provision Timetables

### IMPORTANT NEW REPORTING PROCESS FOR PART-TIME AND ALTERNATIVE PROVISION TIMETABLES

All pupils of compulsory school age are entitled to full time education. In very exceptional circumstances, there may be a need for a temporary part-time timetable to meet a pupil's individual needs. For example, where a medical condition prevents a pupil from attending full time education and a part-time timetable is considered as part of the reintegration package.

A part-time timetable must not be treated as a long-term solution. Any pastoral support program or other agreement must have a time limit by which point the pupil is expected to attend full time or be provided with alternative provision.

Any decision about a part-time timetable needs to have due and full consideration of any safeguarding and welfare risks, plus steps to prevent these. Any vulnerabilities and risks must be fully regarded as part of your duties to safeguard and promote the welfare of children. Not being in school full time can put children at significant risk, including risk of harm, neglect, abuse, exploitation and radicalisation, for example, as well as the risks of underachieving, poor outcomes, and becoming NEET.

A reduced timetable is not considered an appropriate method of managing poor behaviour, or pupils at risk of exclusion, in the longer term. This intervention should only be considered after other strategies have been exhausted and they should be for the benefit of the pupil, such arrangements must be made with the agreement of parents/carers.

Any pupil on a part-time timetable is expected to have a My Plan + in place (along with a My Assessment) to ensure needs are identified and SMART targets set in conjunction with parents; this will enable pupils to work towards attending school full time with appropriate support in place. Schools should record these absences as code 'C2' in the attendance register and code 'X' for children that are not of compulsory school age.

It is important as a local authority that we have a central record of all children not accessing full time education in the usual way, including those accessing alternative provision full time away from their mainstream school, regardless of where they are on roll.

Please report your part time and amended timetables to GCC as soon as they are put in place, amended or cease using this link to the JADU form:  
[https://forms.gloucestershire.gov.uk/Reduced\\_Alternative\\_Education/](https://forms.gloucestershire.gov.uk/Reduced_Alternative_Education/)

Please ensure you have all the information needed to complete the form as it does have a time out of 25 minutes. It is only one page of information but if you think it may time out then put anything in the data boxes and save and you can go back and amend it.

If you have any queries about this process, please contact your Inclusion Officer in the first instance or call our general helpline on 01452 427274. If you are contacting us outside of working hours, then please email [gttimetables@gloucestershire.gov.uk](mailto:gttimetables@gloucestershire.gov.uk) and someone will get back to you within 5 working days.

Living our values every day



Accountable



Integrity



Empower



Respect



Excellence



# Focus on...

*School absence and Deprivation*

Living our values every day



Accountable



Integrity



Empower



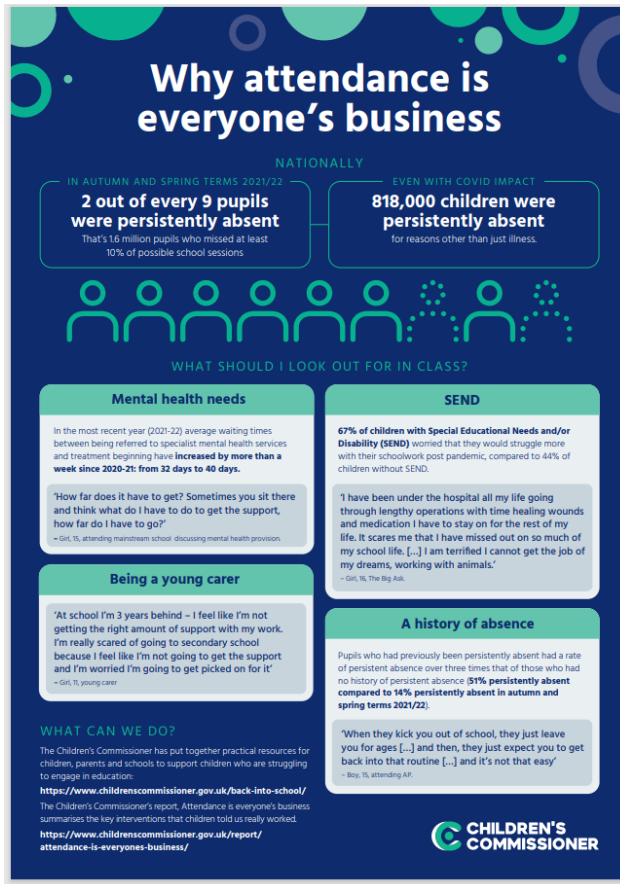
Respect



Excellence



# Focus on...



## Children at risk of persistent absence

From the extensive research carried out by the Commissioner, the CCo has identified the following groups of children who are more at risk of absence from school.

- Children with Special Educational Needs and/or Disability (SEND)
- Mental health
- Young carers
- Children with a history of exclusion & absence



# Focus on...

Percentage of Days Missed	Number of Days Missed (based on 190 days)
1%	1.9
2%	3.8
3%	5.7
4%	7.6
5%	9.5
6%	11.4
7%	13.3
8%	15.2
9%	17.1
10%	19

## Gloucestershire 2022/23 Absence rates:

FSM eligible absence = 11.8%, 22 days

Non-eligible = 6.0%, 11 days

EHCP absence = 12.6%, 24 days

No-SEN absence = 6.4%, 12 days

All pupils = 7.2%, 13 days

*Every 1% of absence equates to almost 2 days over the whole academic year*

# Focus on...

Children in state-funded schools in England are entitled to receive free school meals if a parent or carer were in receipt of ... benefits ...

Pupils in families with no recourse to public funds (NPRF) can also be eligible for free school meals

Children in nursery schools are eligible if they meet the criteria and attend for full days, or if part time, receiving education before and after the lunch break. Pupils are still eligible for free school meals in school in sixth form, but not sixth form college or further education

And

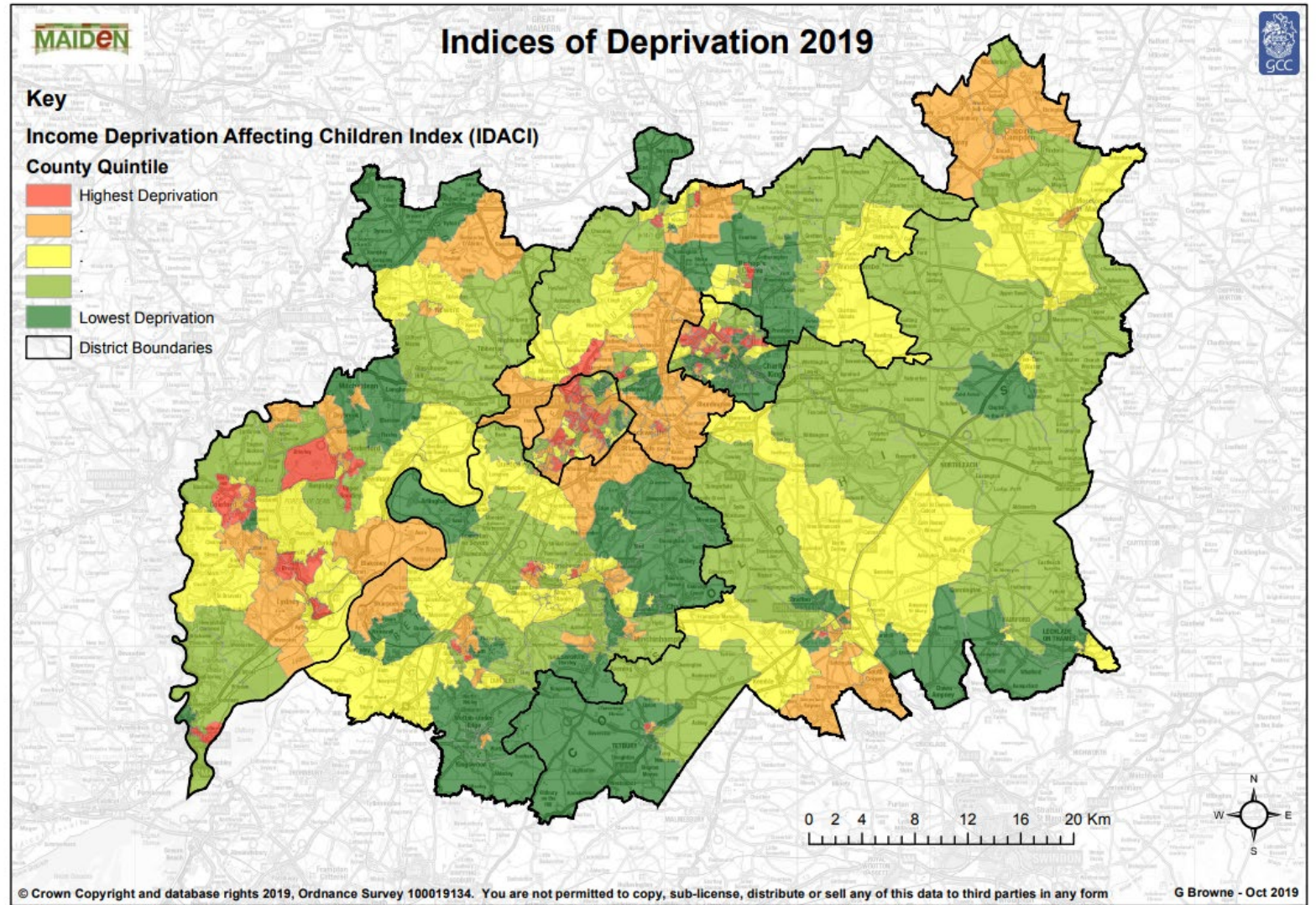
Any pupil gaining eligibility for free school meals after 1 April 2018 will be protected against losing free school meals until March 2025...

# Focus on...

## Deprivation

Income Deprivation Affecting Children Index (IDACI)

*“represents the proportion of children aged 0-15 living in income deprived households which are defined by 7 income and benefits indicators”*



# Focus on...

	State-funded primary	State-funded secondary	Special	Total	Total Pupils	Total PAs	PA rate (% of pupils)	Absence rates (% sessions missed)
0 - 10 % most deprived	9	5	0	14	5591	1688	30.2	10.2
10 - 20 %	10	4	1	15	5901	1510	25.6	8.3
20 - 30 %	10	1	1	12	3012	797	26.5	8.6
30 - 40 %	21	1	1	23	5369	997	18.6	6.6
40 - 50 %	19	3	0	22	6104	1401	23.0	7.7
50 - 60 %	24	5	1	30	9049	1825	20.2	7.3
60 - 70 %	40	8	3	51	14577	2991	20.5	7.6
70 - 80 %	39	4	0	43	8982	1437	16.0	6.3
80 - 90 %	41	4	3	48	10282	1804	17.5	6.7
90 - 100 % least deprived	31	6	1	38	11878	1682	14.2	5.8
<b>TOTAL</b>	<b>244</b>	<b>41</b>	<b>11</b>	<b>296</b>	<b>80745</b>	<b>16132</b>	<b>21.4</b>	<b>7.2</b>

Academic Year 2022/23 data

<https://explore-education-statistics.service.gov.uk/data-tables/permalink/ba9b87cf-e6fe-49fd-ab08-08dd34489990>

# Focus on...

By pupil residency	Gloucestershire 2023/24 All schools				National 2023/24 All schools			
	Total Pupils	Total PAs	PA rate (% of pupils)	Absence rates (% sessions missed)	Total Pupils	Total PAs	PA rate (% of pupils)	Absence rates (% sessions missed)
0 - 10 % most deprived	5151	1574	30.6%	9.8%	970174	284888	29.4%	9.3%
10 - 20 %	5341	1586	29.7%	9.7%	891984	237329	26.6%	8.6%
20 - 30 %	5560	1487	26.7%	8.9%	815972	201070	24.6%	8.1%
30 - 40 %	8521	2018	23.7%	8.2%	780390	178043	22.8%	7.7%
40 - 50 %	7197	1570	21.8%	7.8%	726787	152571	21.0%	7.3%
50 - 60 %	8346	1627	19.5%	7.0%	687200	132135	19.2%	7.0%
60 - 70 %	9784	1712	17.5%	6.8%	657223	113576	17.3%	6.5%
70 - 80 %	9301	1578	17.0%	6.5%	628200	97379	15.5%	6.2%
80 - 90 %	11092	1485	13.4%	5.7%	620452	88151	14.2%	5.8%
90 - 100 % least deprived	7768	939	12.1%	5.4%	592559	71384	12.0%	5.3%
<b>TOTAL</b>	<b>78061</b>	<b>15576</b>	<b>20.0%</b>		• <b>7370941</b>	<b>1556526</b>	<b>21.2%</b>	

Academic Year 2022/23 data

<https://explore-education-statistics.service.gov.uk/data-tables/permalink/1e36aed2-0706-414e-5a04-08dd3479441b>

# Focus on...

## Gloucestershire 2022/23 Absence rates:

FSM eligible absence = 11.8%, 22 days

Non-eligible = 6.0%, 11 days

EHCP absence = 12.6%, 24 days

No-SEN absence = 6.4%, 12 days

**Pupils in most deprived areas = 9.8%, 19 days**

**Pupils in least deprived areas = 5.4%, 10 days**

All pupils = 7.2%, 13 days

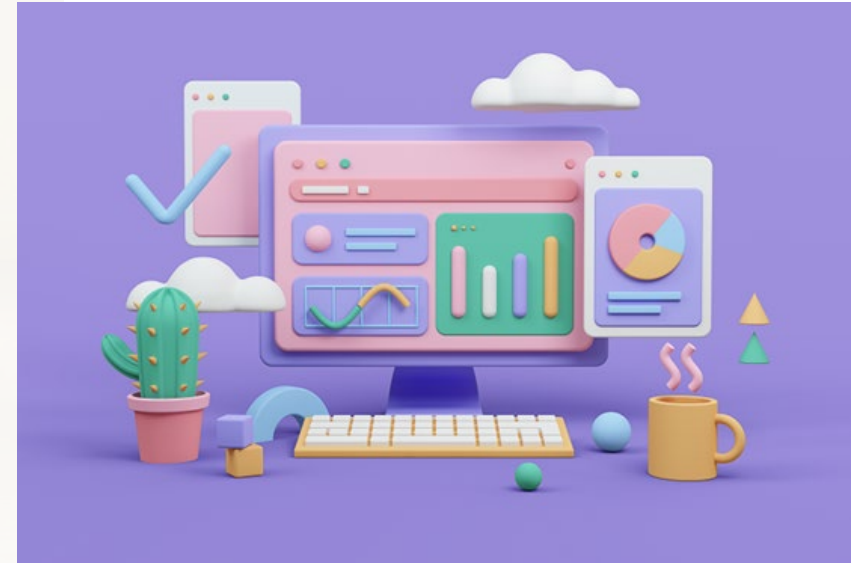
*Every 1% of absence equates to almost 2 days  
over the whole academic year*

# Attendance data and updates

- Contact Inclusion Officers for advice and support on managing absence and promoting attendance
- Upgrade to the latest version of WONDE to keep accurate data flowing between schools, DfE and GCC
- Send in your Part-time timetables! Run routines to identify any with incorrect codes
- Contact your linked Inclusion Officer or Education Data, Analysis and Insights Team if you have any data-related questions or training requests

[Laura.Berry@gloucestershire.gov.uk](mailto:Laura.Berry@gloucestershire.gov.uk)

[EducationDataHub@gloucestershire.gov.uk](mailto:EducationDataHub@gloucestershire.gov.uk)



*Thank you!*