

Unemployment Bulletin

Issue 133 August 2019

Contents

Part 1: Summary A summary of unemployment data at district, County, regional and national level	1
Part 2: County Unemployment figures for the County compared to the South West and the rest of the UK	3
Part 3: Districts A comparative break down of unemployment figures by district	4
Part 4: Wards Further breakdown of unemployment figures by ward:	
Cheltenham	6
Cotswolds	8
Forest of Dean	10
Gloucester	12
Stroud	14
Tewkesbury	16
Part 5: Map Distribution of claimant rate across Gloucestershire	18
Part 6: Youth Unemployment Unemployment data for the 18-24 year old age group	20
Part 7: Young People Data about Young People Not in Education, Employment or Training (NEET)	21

The Claimant Count is a measure of the number of people who are unemployed and claiming benefits. From 1996 until the recent introduction of Universal Credit, this was based on the number of people claiming Jobseeker's Allowance. However, since its introduction some unemployment benefit claimants will be claiming Universal Credit instead. **To reflect this change, the Claimant Count has been expanded to include people claiming Jobseeker's Allowance plus those who claim Universal Credit and who are searching for work.**

Gloucestershire is in the process of transitioning to full Universal Credit. This means a broader span of claimants will be required to look for work than previously under Jobseekers Allowance. As more people are brought within the coverage of Universal Credit, the Claimant Count is set to rise noticeably over time. This will happen irrespective of how the economy performs and is a feature of the design of Universal Credit which brings additional groups of people into 'Searching for Work' conditionality (and therefore the Claimant Count), to help encourage and support these claimants into work.

For more information about Universal Credit please see the [ONS website](https://www.ons.gov.uk/universal-credit).

INTRODUCTION

The Unemployment Bulletin provides a monthly update on unemployment data for Gloucestershire, the South West region and the United Kingdom. It is produced by the Data & Analysis Team in the County Council's Planning, Performance and Change function. The data are sourced from the Office for National Statistics via Nomis (www.nomis.co.uk). All data are rounded to the nearest 5 and may not precisely add to the sum of the number of people claiming JSA, and the number of people claiming Universal Credit required to seek work, due to independent rounding.

PART 1: SUMMARY

The claimant rate in Gloucestershire was **1.9% in August 2019**. The South West rate increased to 2.1%, while the UK rate stayed the same as last month at 2.8%. Gloucestershire's rate was 0.2% lower than the South West average of 2.1%, and 0.9% lower than the UK average of 2.8%.

The claimant count in Gloucestershire in August 2019 increased by **185 people**. The amount of people claiming in August 2019 was 2.6% higher than the number in July 2019. This compares to a 2.3% increase in the South West and a 2.7% increase for the UK.

Produced by:

Data & Analysis Team
Planning, Performance and Change
Gloucestershire County Council
September 2019

DISTRICTS AT A GLANCE

At a glance unemployment information grouped by district. Includes:

Claim count: Total number of people claiming Job Seekers Allowance and Universal Credit who are not in work in August 2019

Compared to last month: How much larger/smaller August's claimant count is compared to July expressed as a %

Claimant rate: The % of working age population claiming Job Seekers Allowance and Universal Credit who are not in work in August 2019

Highest claiming ward: The ward with the highest claim count in that district and the rate

CHELTENHAM BOROUGH

Claim count:	1,415
Compared to last month:	3.3%
Claimant rate:	1.9%
Highest claiming ward	Hester's Way (4.4%)

GLOUCESTER CITY

Claim count:	2,280
Compared to last month:	3.2%
Claimant rate:	2.8%
Highest claiming wards	Westgate (5.7%)

COTSWOLD DISTRICT

Claim count:	660
Compared to last month:	2.3%
Claimant rate:	1.3%
Highest claiming ward	Watermoor (3.8%)

STROUD DISTRICT

Claim count:	955
Compared to last month:	1.6%
Claimant rate:	1.3%
Highest claiming wards	Slade (3.7%)

FOREST OF DEAN

Claim count:	1,125
Compared to last month:	3.7%
Claimant rate:	2.2%
Highest claiming ward	Lydney East (4.4%)

TEWKESBURY BOROUGH

Claim count:	860
Compared to last month:	0.0%
Claimant rate:	1.6%
Highest claiming ward	Tewkesbury Prior's Park (3.8%)

PART 2: UK, SW AND GLOUCESTERSHIRE INDICATORS

The unemployment situation in Gloucestershire compared to the South West and the UK.

Claimant Rate

Figure 1: Claimant Rate for Gloucestershire, the South West and UK over the past year

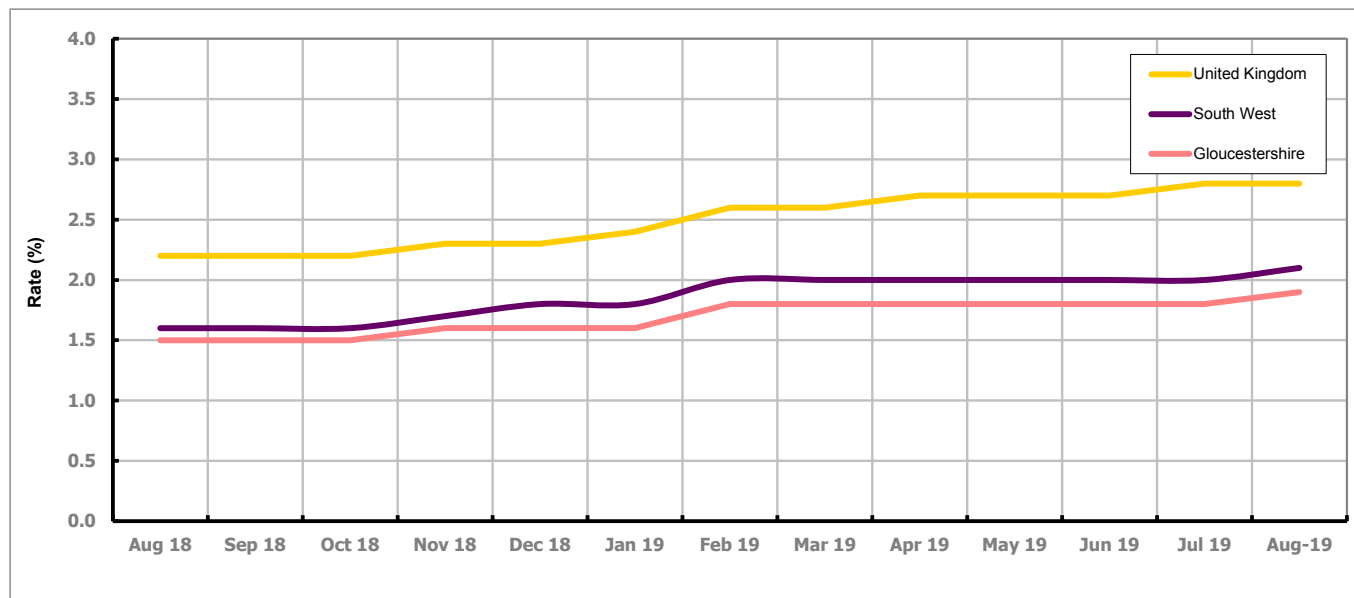


Figure 1 shows the claimant rate for Gloucestershire at 1.9% in August 2019. The Gloucestershire rate has been lower than the South West average since December 2015, with the exception of April and May 2016 when it was the same. It has been persistently lower by approximately 0.8% against the UK average.

Claimant Count

Table 1: Analysis of UK, South West and Gloucestershire Claimant Counts

Area	Claimant Count in August 2019	% change on July 2019	Consecutive months increasing
UK	1,177,115	2.7%	13
South West	69,455	2.3%	13
Gloucestershire	7,295	2.6%	14

Table 1 shows that in August 2019, the number of claimants in Gloucestershire was 2.6% higher than the number in July 2019.

PART 3: LOCAL AUTHORITY DISTRICT ANALYSIS

Claimant Rate and Claimant Count

Figure 2: Claimant Rate (%) across Gloucestershire - August 2019

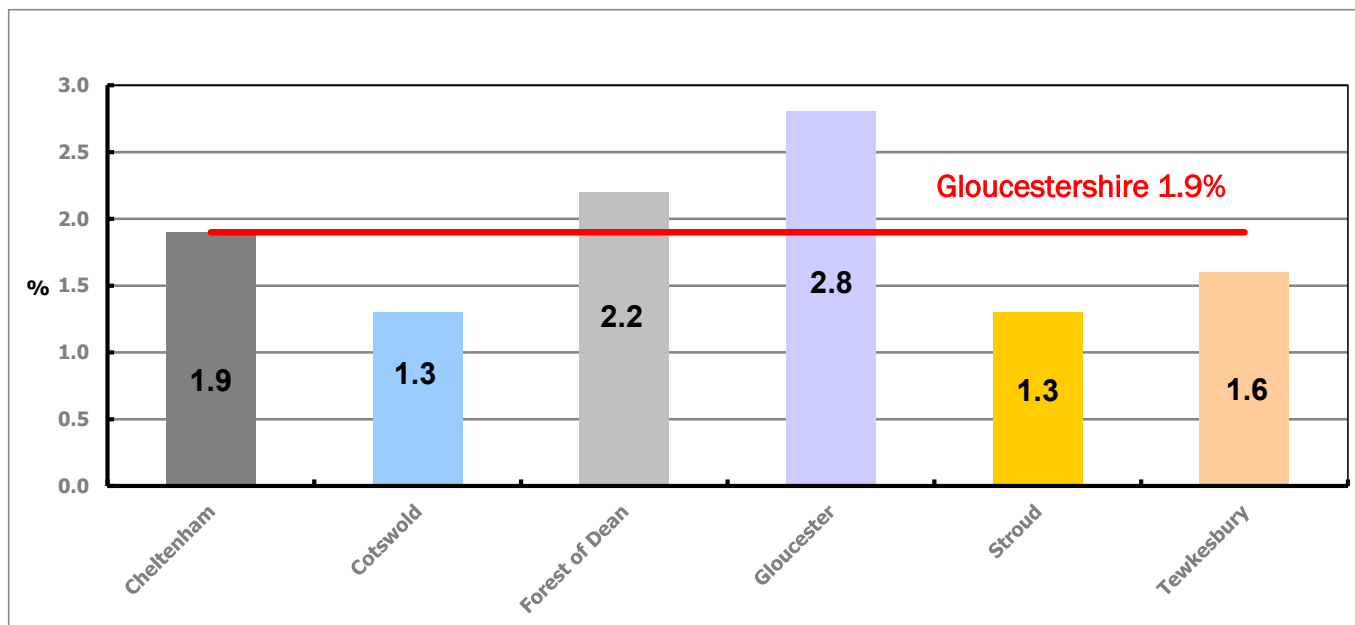


Figure 2 shows the claimant rate for August 2019 in Gloucestershire. Between July 2019 and August 2019 the rate increased in Cotswold, Forest of Dean and Gloucester. All other districts stayed the same.

Table 2: Analysis of Gloucestershire and District Claimant Counts

Total	Aug 19 Number	Aug 19 Rate	Jul 19 Number	Jul 19 Rate	Monthly change	% monthly change	Monthly change of rate
Gloucestershire	7,295	1.9	7,110	1.8	185	2.6%	0.1
Cheltenham	1,415	1.9	1,370	1.9	45	3.3%	0.0
Cotswold	660	1.3	645	1.2	15	2.3%	0.1
Forest of Dean	1,125	2.2	1,085	2.1	40	3.7%	0.1
Gloucester	2,280	2.8	2,210	2.7	70	3.2%	0.1
Stroud	955	1.3	940	1.3	15	1.6%	0.0
Tewkesbury	860	1.6	860	1.6	0	0.0%	0.0

Table 2 shows the change in the claimant count in August 2019 compared to July 2019. All districts saw an increase in the number of claimants, except Tewkesbury which stayed the same.

Table 3: Analysis of Male Gloucestershire and District Claimant Counts

Male	Aug 19 Number	Aug 19 Rate	Jul 19 Number	Jul 19 Rate	Monthly change	% monthly change	Monthly change of rate
Gloucestershire	4,205	2.2	4,125	2.2	80	1.9%	0.0
Cheltenham	850	2.3	835	2.3	15	1.8%	0.0
Cotswold	365	1.4	355	1.4	10	2.8%	0.0
Forest of Dean	635	2.5	630	2.5	5	0.8%	0.0
Gloucester	1,370	3.4	1,330	3.3	40	3.0%	0.1
Stroud	520	1.5	510	1.4	10	2.0%	0.1
Tewkesbury	465	1.7	465	1.7	0	0.0%	0.0

Table 3 shows the change in the male claimant count in August 2019 compared to July 2019. All districts saw an increase in the number of male claimants, except Tewkesbury which stayed the same.

Table 4: Analysis of Female Gloucestershire and District Claimant Counts

Female	Aug 19 Number	Aug 19 Rate	Jul 19 Number	Jul 19 Rate	Monthly change	% monthly change	Monthly change of rate
Gloucestershire	3,090	1.6	2,985	1.5	105	3.5%	0.1
Cheltenham	565	1.5	535	1.5	30	5.6%	0.0
Cotswold	295	1.1	290	1.1	5	1.7%	0.0
Forest of Dean	485	1.9	455	1.8	30	6.6%	0.1
Gloucester	910	2.2	880	2.2	30	3.4%	0.0
Stroud	435	1.2	430	1.2	5	1.2%	0.0
Tewkesbury	400	1.4	395	1.4	5	1.3%	0.0

Table 4 shows the change in the female claimant count in August 2019 compared to July 2019. All districts saw an increase in the number of female claimants.

PART 4: LOCAL AUTHORITY DISTRICT AND WARD ANALYSIS

This section covers the six districts and a comparison of their constituent wards.

4.1 Cheltenham Borough

Claimant Rate and Claimant Count

Figure 3: Cheltenham Borough claimant rate over the last year

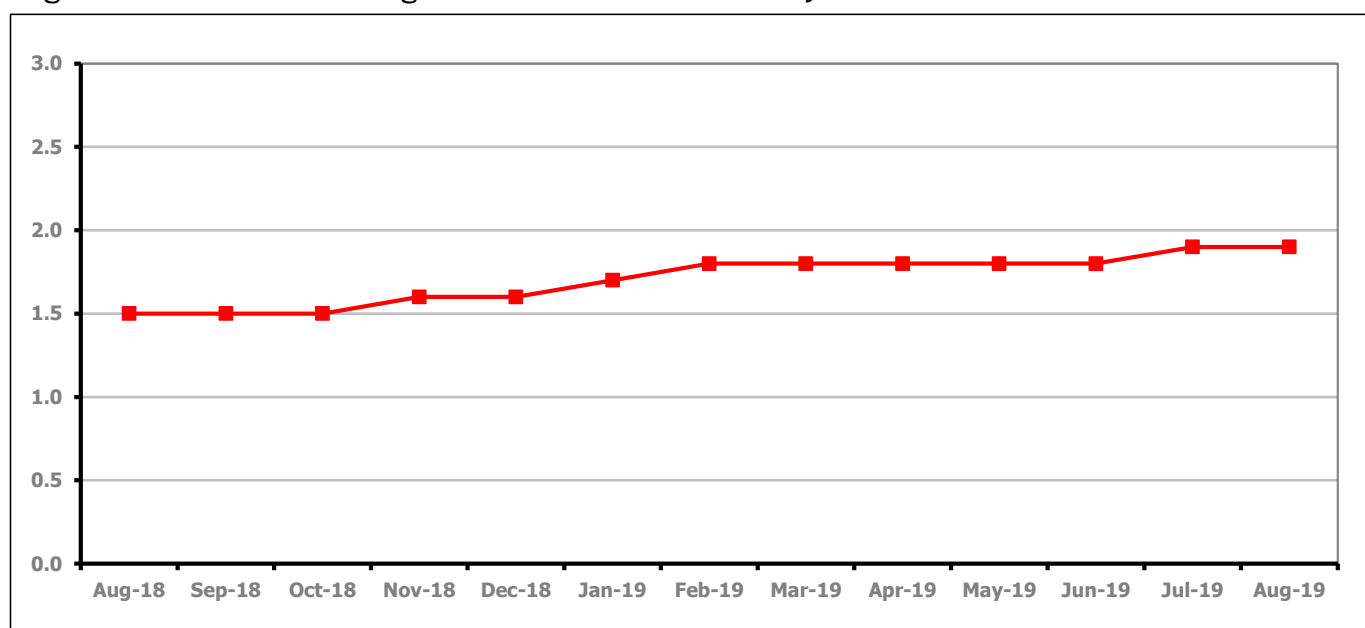


Figure 3 shows the claimant rate in Cheltenham stayed the same as last month at 1.9%.

Figure 4: Claimant rates across Cheltenham Borough wards - August 2019

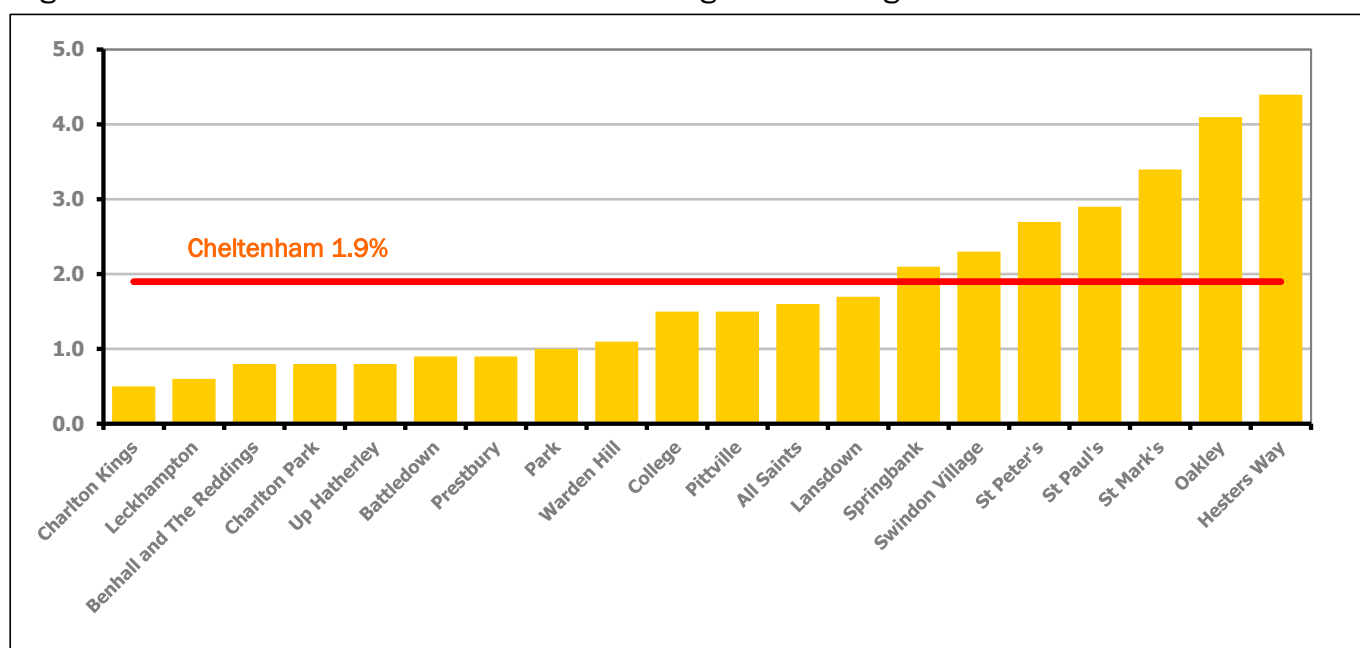


Figure 4 shows the claimant rates for Cheltenham Borough wards. The red line represents the average claimant rate across the Borough of 1.9%. Seven wards lie above the average.

PART 4: LOCAL AUTHORITY DISTRICT AND WARD ANALYSIS

4.1 Cheltenham Borough continued...

Table 5: Analysis of Claimant Count at Cheltenham Borough ward level - August 2019

District	Ward	Rate	Rank*
Cheltenham	Charlton Kings	0.5	2
Cheltenham	Leckhampton	0.6	6
Cheltenham	Benhall and The Reddings	0.8	17
Cheltenham	Charlton Park	0.8	17
Cheltenham	Up Hatherley	0.8	17
Cheltenham	Battledown	0.9	26
Cheltenham	Prestbury	0.9	26
Cheltenham	Park	1.0	38
Cheltenham	Warden Hill	1.1	47
Cheltenham	College	1.5	82
Cheltenham	Pittville	1.5	82
Cheltenham	All Saints	1.6	88
Cheltenham	Lansdown	1.7	95
Cheltenham	Springbank	2.1	114
Cheltenham	Swindon Village	2.3	118
Cheltenham	St Peter's	2.7	124
Cheltenham	St Paul's	2.9	127
Cheltenham	St Mark's	3.4	131
Cheltenham	Oakley	4.1	139
Cheltenham	Hesters Way	4.4	141

	lowest 10% of county
	first quartile of county
	second quartile of county
	third quartile of county
	fourth quartile of county
	highest 10% of county

* 1 = "best" and 146 = "worst"

Table 5 shows overall claimant rates for Cheltenham Borough wards and their position relative to all wards in Gloucestershire.

PART 4: LOCAL AUTHORITY DISTRICT AND WARD ANALYSIS

4.2 Cotswold District

Claimant Rate and Claimant Count

Figure 5: Cotswold District claimant rate over the last year

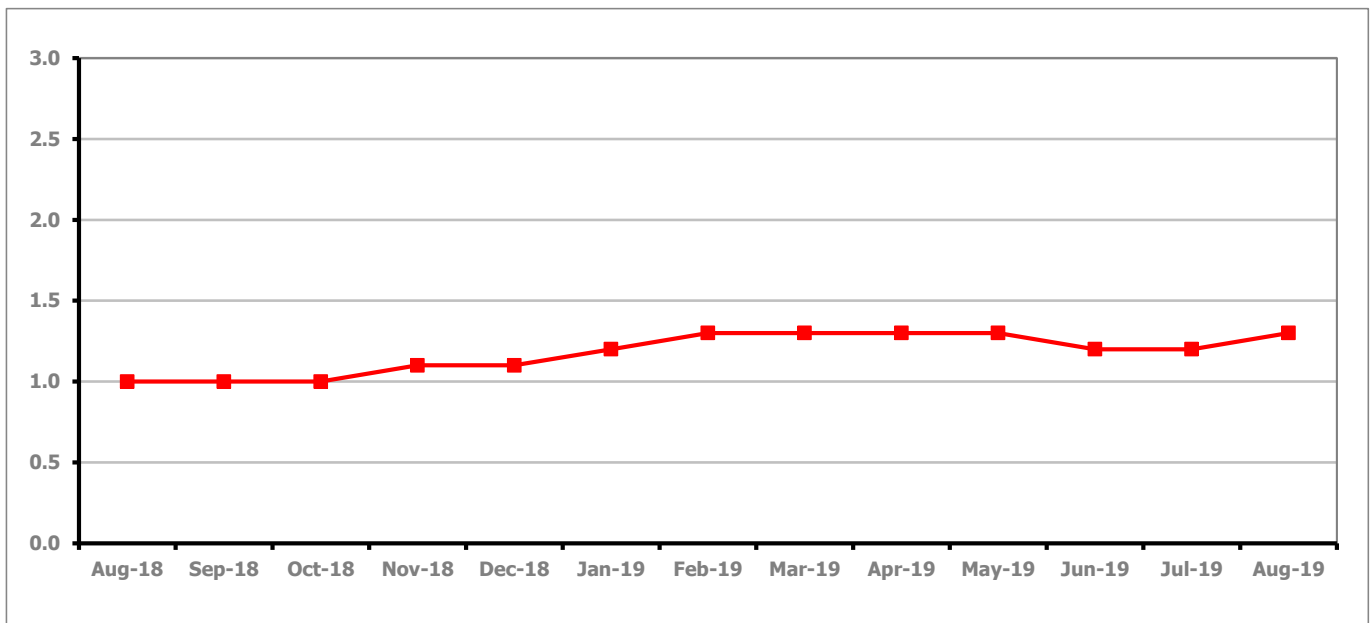


Figure 5 shows the claimant rate in Cotswold District increased in August 2019 to 1.3%.

Figure 6: Claimant rates across Cotswold District wards - August 2019

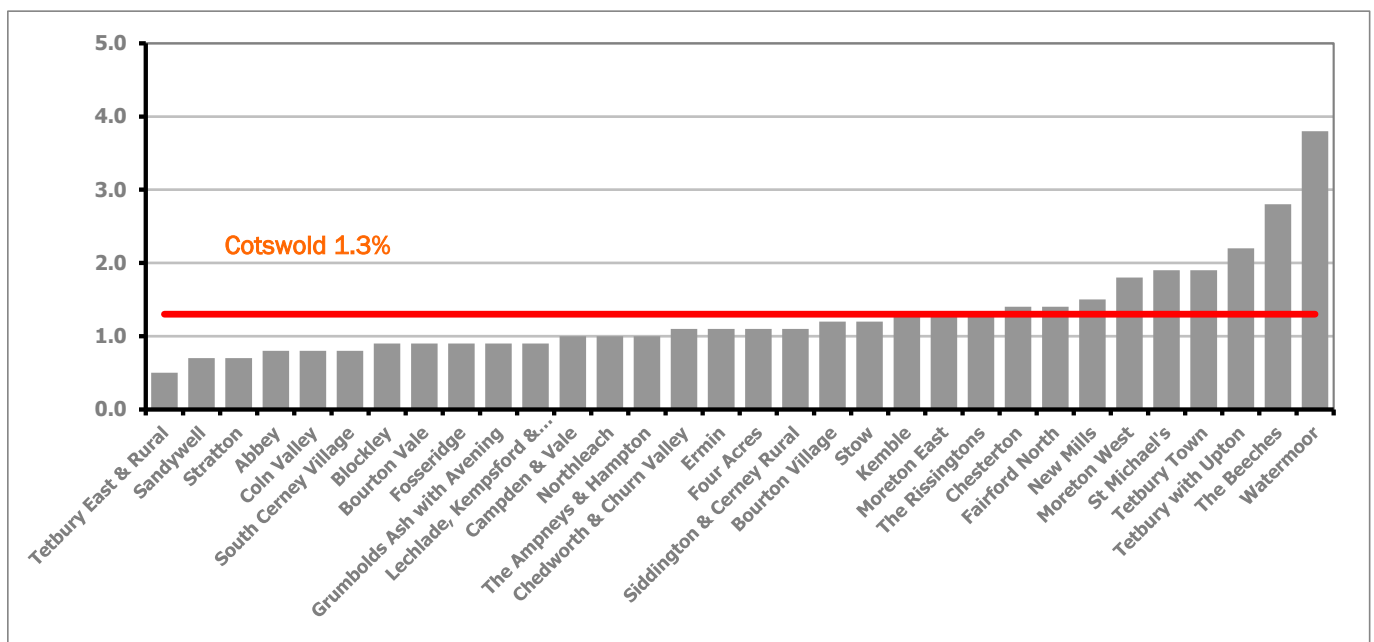


Figure 6 shows the claimant rates for Cotswold District wards. The red line represents the average claimant rate across the District of 1.3%. Nine wards lie above the average.

PART 4: LOCAL AUTHORITY DISTRICT AND WARD ANALYSIS

4.2 Cotswold District continued...

Table 6: Analysis of Claimant Count at Cotswold District ward level - August 2019

District	Ward	Rate	Rank*
Cotswolds	Tetbury East & Rural	0.5	2
Cotswolds	Sandywell	0.7	13
Cotswolds	Stratton	0.7	13
Cotswolds	Abbey	0.8	17
Cotswolds	Coln Valley	0.8	17
Cotswolds	South Cerney Village	0.8	17
Cotswolds	Blockley	0.9	26
Cotswolds	Bourton Vale	0.9	26
Cotswolds	Fosseridge	0.9	26
Cotswolds	Grumbolds Ash with Avening	0.9	26
Cotswolds	Lechlade, Kempsford & Fairford South	0.9	26
Cotswolds	Campden & Vale	1.0	38
Cotswolds	Northleach	1.0	38
Cotswolds	The Ampneys & Hampton	1.0	38
Cotswolds	Chedworth & Churn Valley	1.1	47
Cotswolds	Ermin	1.1	47
Cotswolds	Four Acres	1.1	47
Cotswolds	Siddington & Cerney Rural	1.1	47
Cotswolds	Bourton Village	1.2	58
Cotswolds	Stow	1.2	58
Cotswolds	Kemble	1.3	67
Cotswolds	Moreton East	1.3	67
Cotswolds	The Rissingtons	1.3	67
Cotswolds	Chesterton	1.4	73
Cotswolds	Fairford North	1.4	73
Cotswolds	New Mills	1.5	82
Cotswolds	Moreton West	1.8	100
Cotswolds	St Michael's	1.9	105
Cotswolds	Tetbury Town	1.9	105
Cotswolds	Tetbury with Upton	2.2	117
Cotswolds	The Beeches	2.8	126
Cotswolds	Watermoor	3.8	134

	lowest 10% of county
	first quartile of county
	second quartile of county
	third quartile of county
	fourth quartile of county
	highest 10% of county

* 1 = "best" and 146 = "worst"

Table 6 shows overall claimant rates for Cotswold District wards and their position relative to all wards in Gloucestershire.

PART 4: LOCAL AUTHORITY DISTRICT AND WARD ANALYSIS

4.3 Forest of Dean District

Claimant Rate and Claimant Count

Figure 7: Forest of Dean District claimant rate over the last year

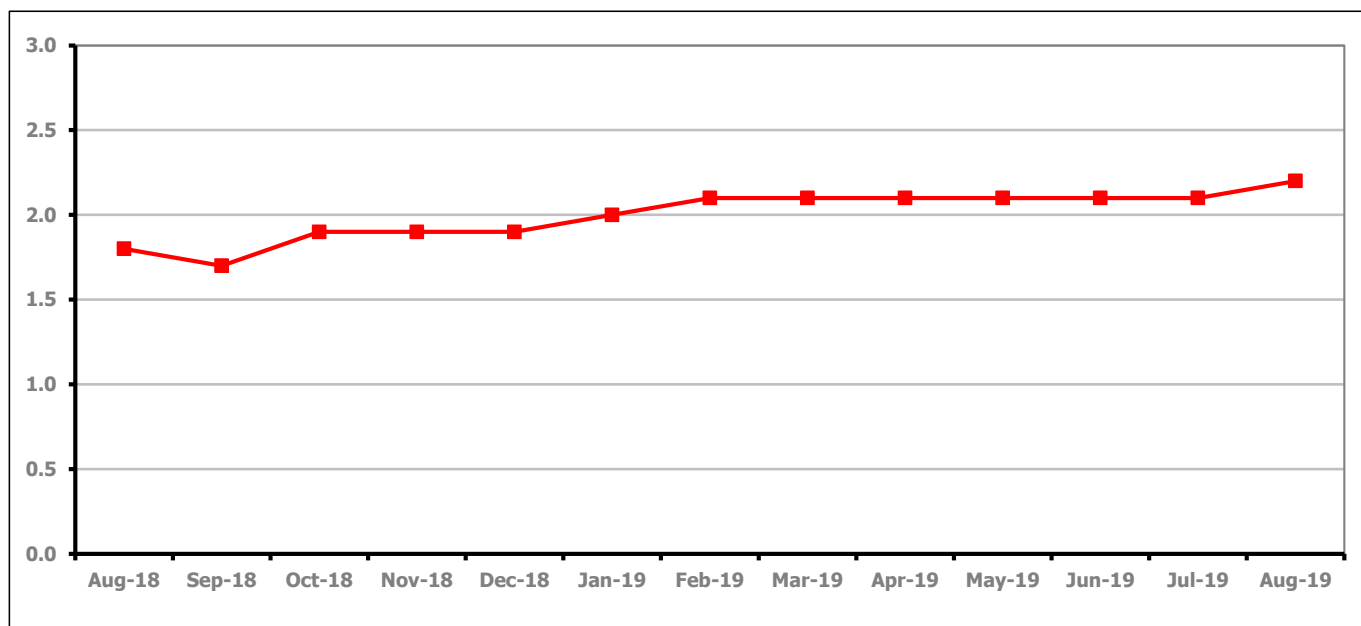


Figure 7 shows the claimant rate in the Forest of Dean increased in August 2019 to 2.2%

Figure 8: Claimant rates across Forest of Dean District wards - August 2019

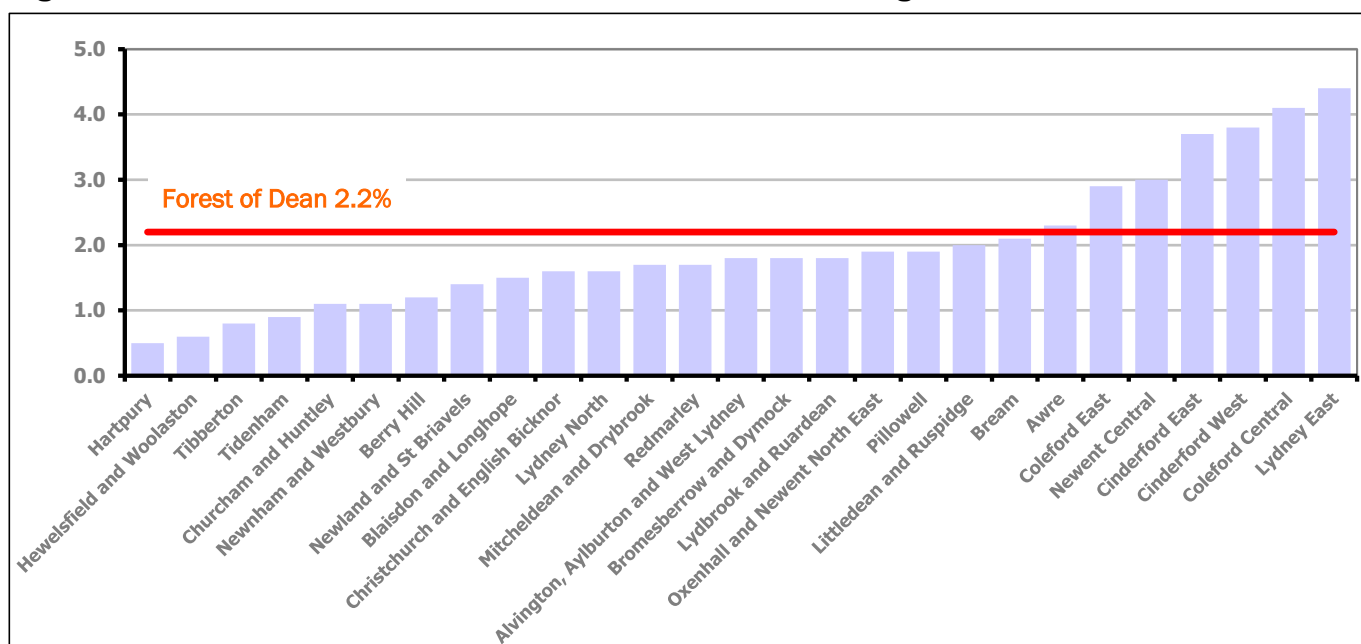


Figure 8 shows the claimant rates for the Forest of Dean District wards. The red line represents the average claimant rate across the District of 2.2%. Seven wards lie above the average.

PART 4: LOCAL AUTHORITY DISTRICT AND WARD ANALYSIS

4.3 Forest of Dean District continued...

Table 7: Analysis of Claimant Count at Forest of Dean District ward level - August 2019

District	Ward	Rate	Rank*
Forest	Hartpur	0.5	2
Forest	Hewelsfield and Woolaston	0.6	6
Forest	Tibberton	0.8	17
Forest	Tidenham	0.9	26
Forest	Churcham and Huntley	1.1	47
Forest	Newnham and Westbury	1.1	47
Forest	Berry Hill	1.2	58
Forest	Newland and St Briavels	1.4	73
Forest	Blaisdon and Longhope	1.5	82
Forest	Christchurch and English Bicknor	1.6	88
Forest	Lydney North	1.6	88
Forest	Mitcheldean and Drybrook	1.7	95
Forest	Redmarley	1.7	95
Forest	Alvington, Aylburton and West Lydney	1.8	100
Forest	Bromesberrow and Dymock	1.8	100
Forest	Lydbrook and Ruardean	1.8	100
Forest	Oxenhall and Newent North East	1.9	105
Forest	Pillowell	1.9	105
Forest	Littledean and Ruspidge	2.0	110
Forest	Bream	2.1	114
Forest	Awre	2.3	118
Forest	Coleford East	2.9	127
Forest	Newent Central	3.0	129
Forest	Cinderford East	3.7	132
Forest	Cinderford West	3.8	134
Forest	Coleford Central	4.1	139
Forest	Lydney East	4.4	141

	lowest 10% of county
	first quartile of county
	second quartile of county
	third quartile of county
	fourth quartile of county
	highest 10% of county

* 1 = "best" and 146 = "worst"

Table 7 shows overall claimant rates for the Forest of Dean District wards and their position relative to all wards in Gloucestershire.

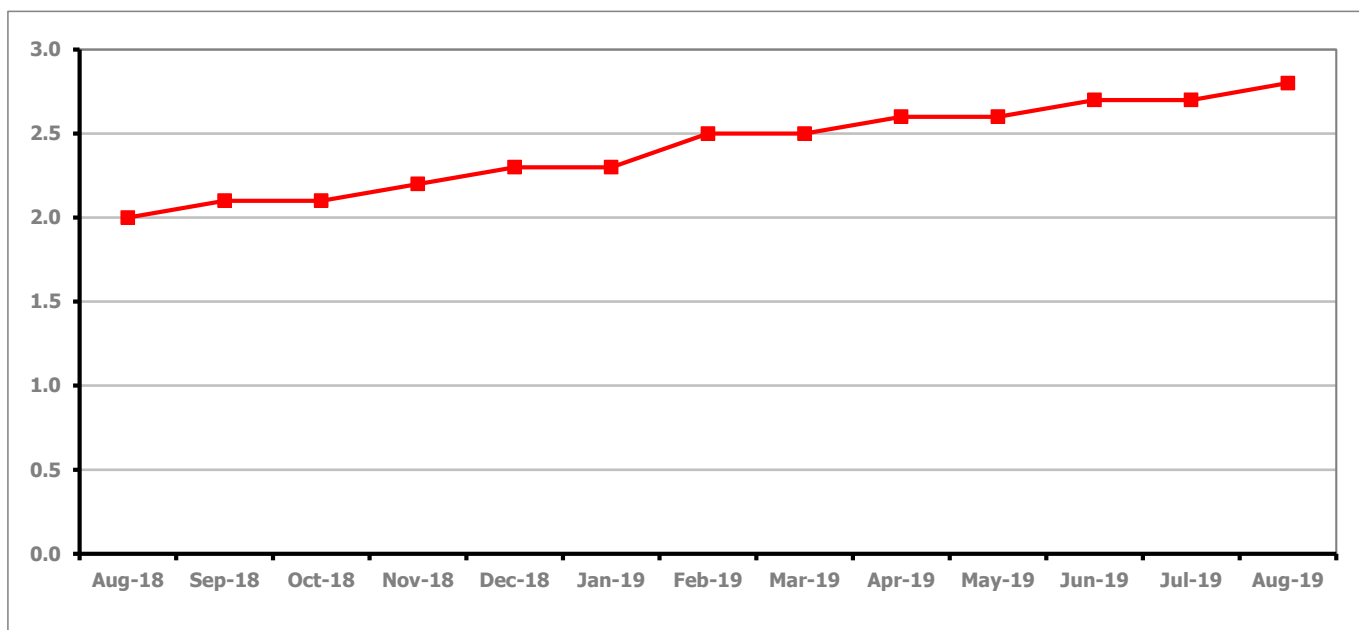
PART 4: LOCAL AUTHORITY DISTRICT AND WARD ANALYSIS**4.4 Gloucester City****Claimant Rate and Claimant Count***Figure 9: Gloucester City claimant rate over the last year*

Figure 9 shows the claimant rate for Gloucester City increased in August 2019 to 2.8%.

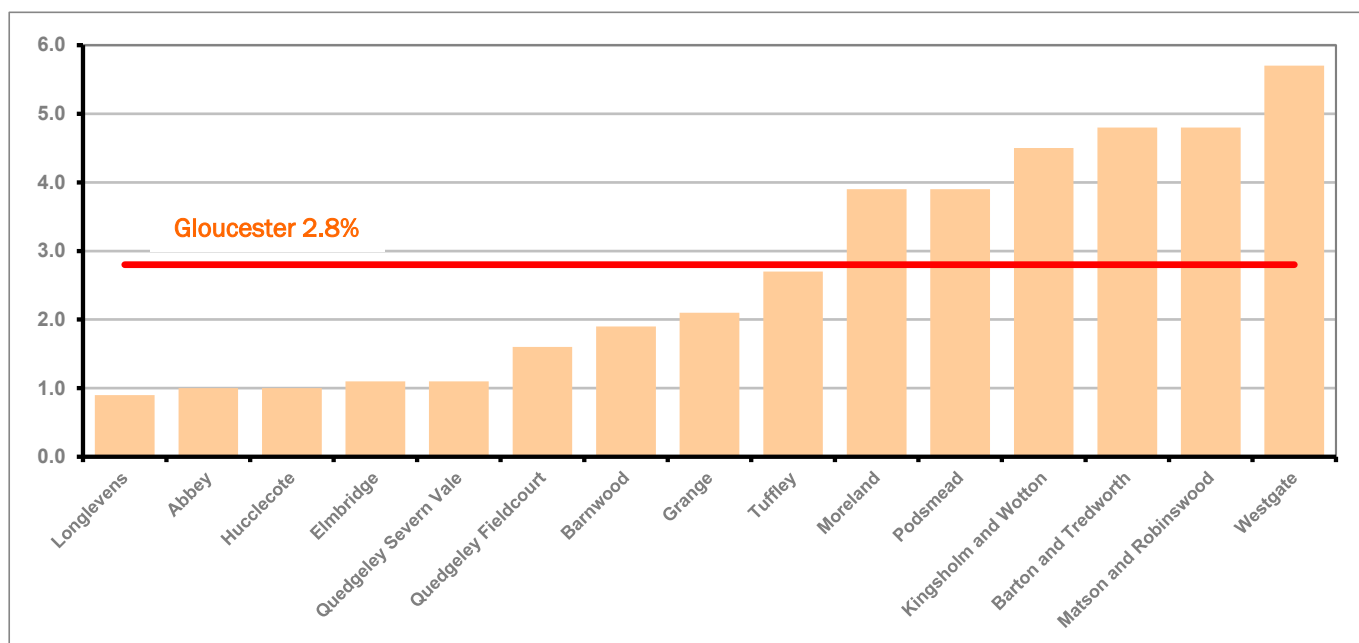
Figure 10: Claimant rates across Gloucester City wards - August 2019

Figure 10 shows the claimant rates for Gloucester City district wards. The red line represents the average claimant rate across the City of 2.8%. Six wards lie above the average.

PART 4: LOCAL AUTHORITY DISTRICT AND WARD ANALYSIS

4.4 Gloucester City continued...

Table 8: Analysis of Claimant Count at Gloucester City ward level - August 2019

District	Ward	Rate	Rank*
Gloucester	Longlevens	0.9	26
Gloucester	Abbey	1.0	38
Gloucester	Hucclecote	1.0	38
Gloucester	Elmbridge	1.1	47
Gloucester	Quedgeley Severn Vale	1.1	47
Gloucester	Quedgeley Fieldcourt	1.6	88
Gloucester	Barnwood	1.9	105
Gloucester	Grange	2.1	114
Gloucester	Tuffley	2.7	124
Gloucester	Moreland	3.9	137
Gloucester	Podsmead	3.9	137
Gloucester	Kingsholm and Wotton	4.5	143
Gloucester	Barton and Tredworth	4.8	144
Gloucester	Matson and Robinswood	4.8	144
Gloucester	Westgate	5.7	146

	lowest 10% of county
	first quartile of county
	second quartile of county
	third quartile of county
	fourth quartile of county
	highest 10% of county

* 1 = "best" and 146 = "worst"

Table 8 shows overall claimant rates for Gloucester City wards and their position relative to all wards in Gloucestershire.

PART 4: LOCAL AUTHORITY DISTRICT AND WARD ANALYSIS

4.5 Stroud District

Claimant Rate and Claimant Count

Figure 11: Stroud District claimant rate over the last year

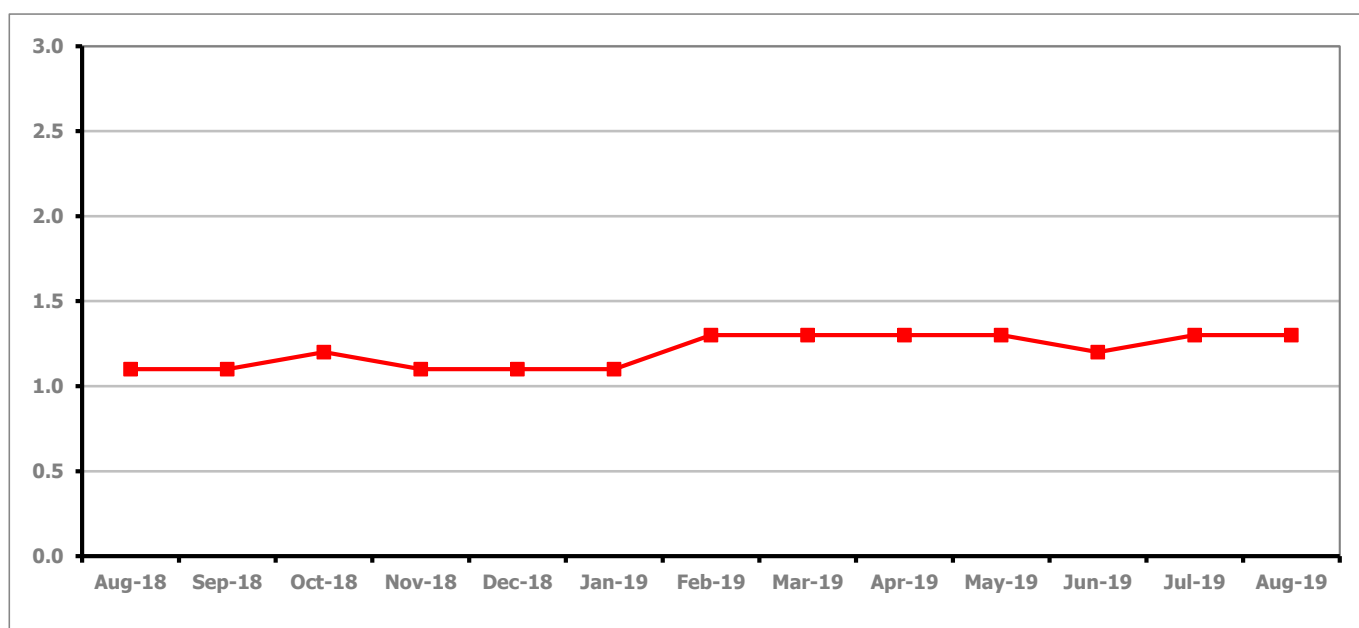


Figure 11 shows the claimant rate for Stroud stayed the same as last month at 1.3%.

Figure 12: Claimant rates across Stroud District wards - August 2019

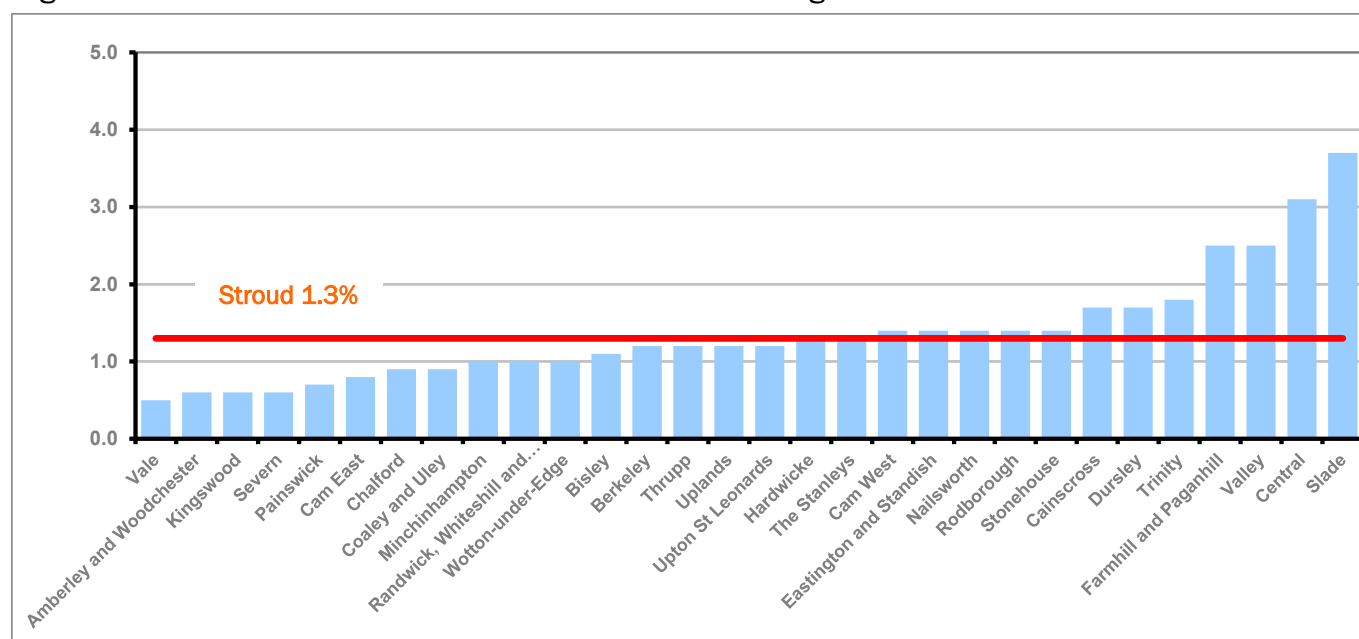


Figure 12 shows the claimant rates in Stroud District wards. The red line represents the average claimant rate across the District of 1.3%. Twelve wards are above the average.

PART 4: LOCAL AUTHORITY AND DISTRICT ANALYSIS

4.5 Stroud District continued...

Table 9: Analysis of Claimant Count at Stroud District ward level - August 2019

District	Ward	Rate	Rank*
Stroud	Vale	0.5	2
Stroud	Amberley and Woodchester	0.6	6
Stroud	Kingswood	0.6	6
Stroud	Severn	0.6	6
Stroud	Painswick	0.7	13
Stroud	Cam East	0.8	17
Stroud	Chalford	0.9	26
Stroud	Coaley and Uley	0.9	26
Stroud	Minchinhampton	1.0	38
Stroud	Randwick, Whiteshill and Ruscombe	1.0	38
Stroud	Wotton-under-Edge	1.0	38
Stroud	Bisley	1.1	47
Stroud	Berkeley	1.2	58
Stroud	Thrupp	1.2	58
Stroud	Uplands	1.2	58
Stroud	Upton St Leonards	1.2	58
Stroud	Hardwicke	1.3	67
Stroud	The Stanleys	1.3	67
Stroud	Cam West	1.4	73
Stroud	Eastington and Standish	1.4	73
Stroud	Nailsworth	1.4	73
Stroud	Rodborough	1.4	73
Stroud	Stonehouse	1.4	73
Stroud	Cainscross	1.7	95
Stroud	Dursley	1.7	95
Stroud	Trinity	1.8	100
Stroud	Farmhill and Paganhill	2.5	122
Stroud	Valley	2.5	122
Stroud	Central	3.1	130
Stroud	Slade	3.7	132

	lowest 10% of county
	first quartile of county
	second quartile of county
	third quartile of county
	fourth quartile of county
	highest 10% of county

* 1 = "best" and 146 = "worst"

Table 9 shows overall claimant rates for Stroud District wards and their position relative to all wards in Gloucestershire.

PART 4: LOCAL AUTHORITY DISTRICT AND WARD ANALYSIS

4.6 Tewkesbury Borough

Claimant Rate and Claimant Count

Figure 13: Tewkesbury Borough claimant rate over the last year

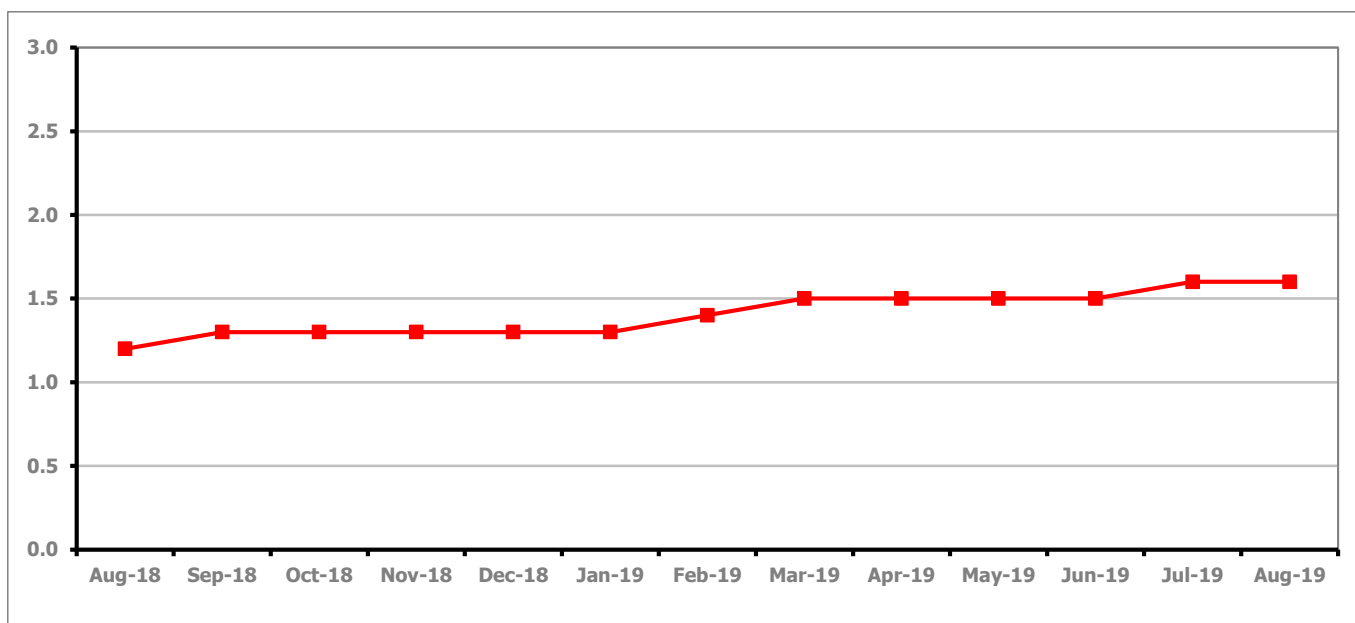


Figure 13 shows the claimant rate for Tewkesbury Borough stayed the same as last month at 1.6%.

Figure 14: Claimant rates across Tewkesbury Borough wards - August 2019

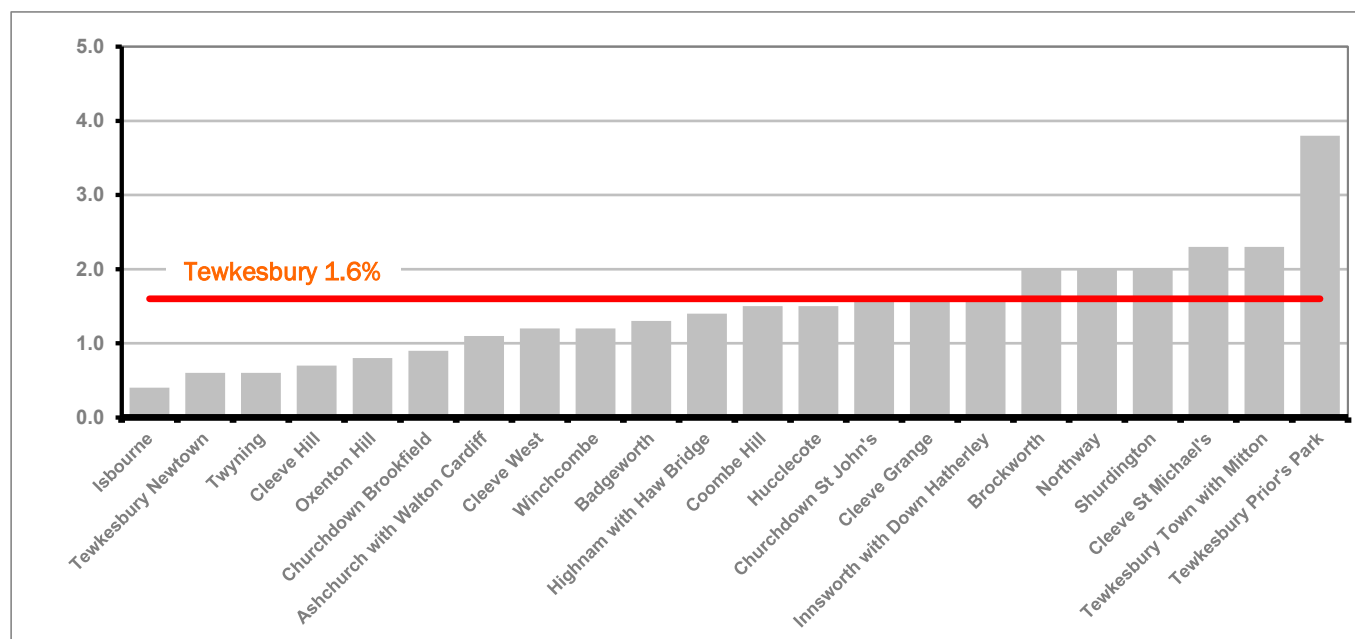


Figure 14 shows the claimant rates in Tewkesbury Borough wards. The red line represents the average claimant rate across the District of 1.6%. Six wards are above the average.

PART 4: LOCAL AUTHORITY AND DISTRICT ANALYSIS

4.6 Tewkesbury Borough continued...

Table 10: Analysis of Claimant Count at Tewkesbury Borough level - August 2019

District	Ward	Rate	Rank*
Tewkesbury	Isbourne	0.4	1
Tewkesbury	Tewkesbury Newtown	0.6	6
Tewkesbury	Twynning	0.6	6
Tewkesbury	Cleeve Hill	0.7	13
Tewkesbury	Oxenton Hill	0.8	17
Tewkesbury	Churchdown Brookfield	0.9	26
Tewkesbury	Ashchurch with Walton Cardiff	1.1	47
Tewkesbury	Cleeve West	1.2	58
Tewkesbury	Winchcombe	1.2	58
Tewkesbury	Badgeworth	1.3	67
Tewkesbury	Highnam with Haw Bridge	1.4	73
Tewkesbury	Coombe Hill	1.5	82
Tewkesbury	Hucclecote	1.5	82
Tewkesbury	Churchdown St John's	1.6	88
Tewkesbury	Cleeve Grange	1.6	88
Tewkesbury	Innsworth with Down Hatherley	1.6	88
Tewkesbury	Brockworth	2.0	110
Tewkesbury	Northway	2.0	110
Tewkesbury	Shurdington	2.0	110
Tewkesbury	Cleeve St Michael's	2.3	118
Tewkesbury	Tewkesbury Town with Mitton	2.3	118
Tewkesbury	Tewkesbury Prior's Park	3.8	134

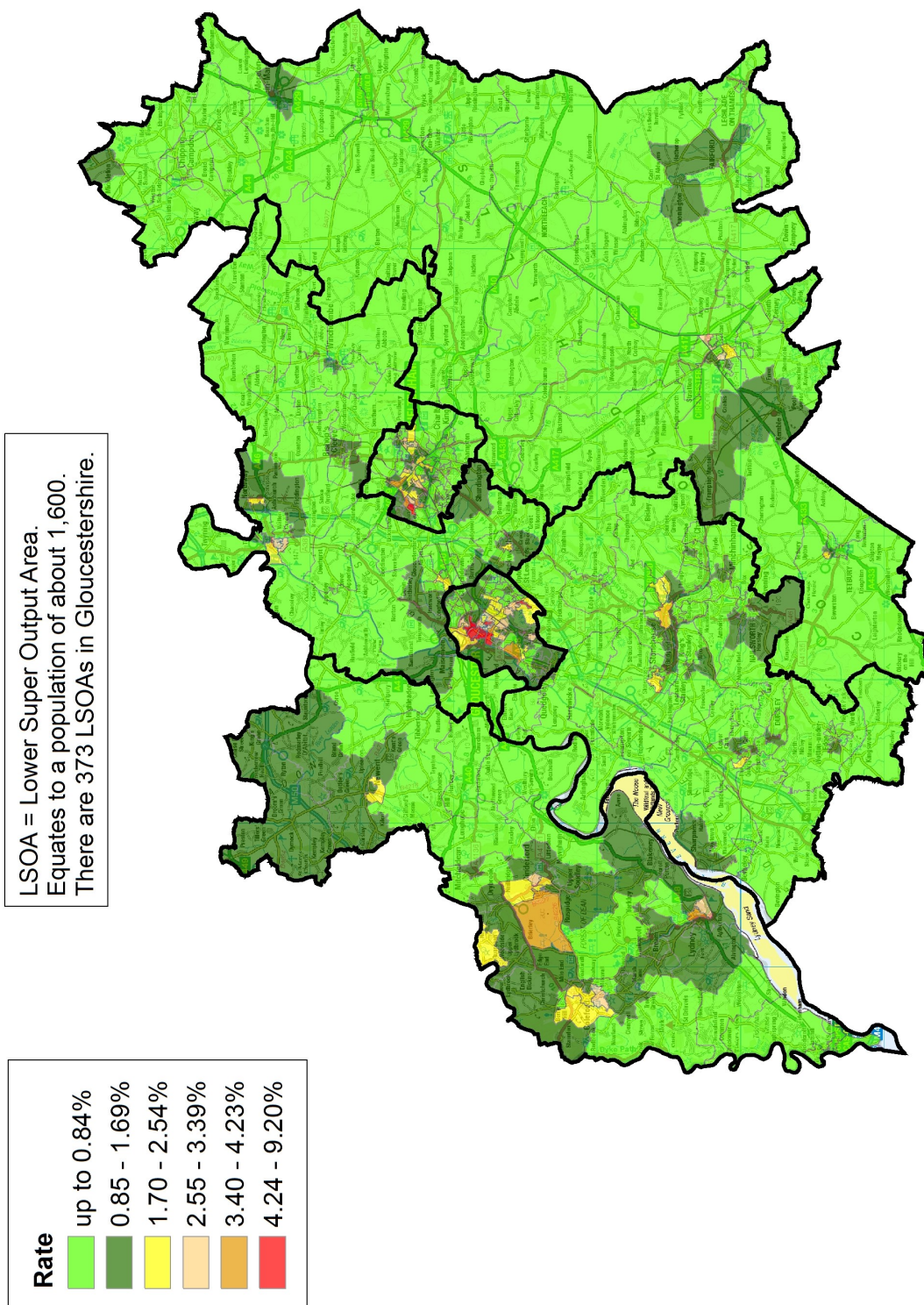
	lowest 10% of county
	first quartile of county
	second quartile of county
	third quartile of county
	fourth quartile of county
	highest 10% of county

* 1 = "best" and 146 = "worst"

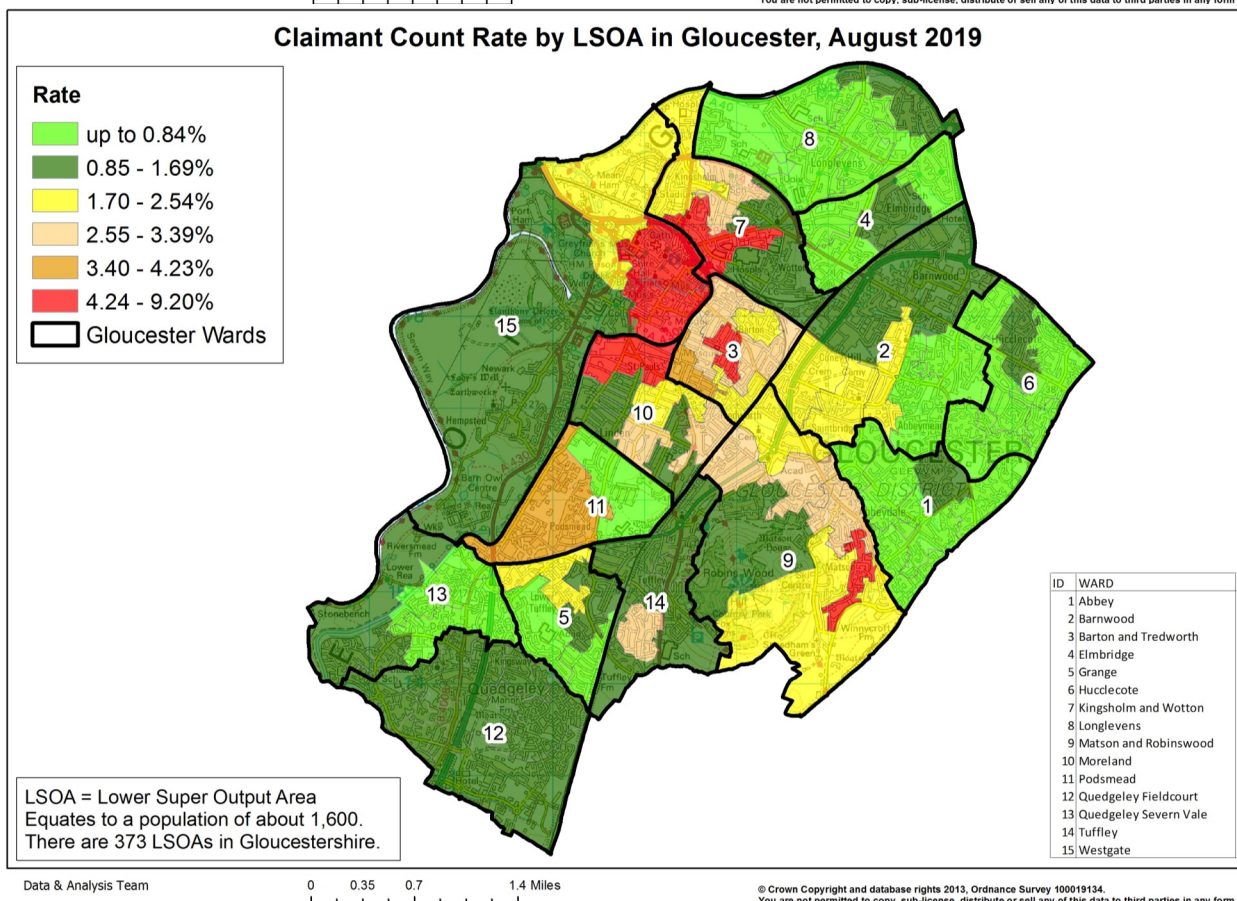
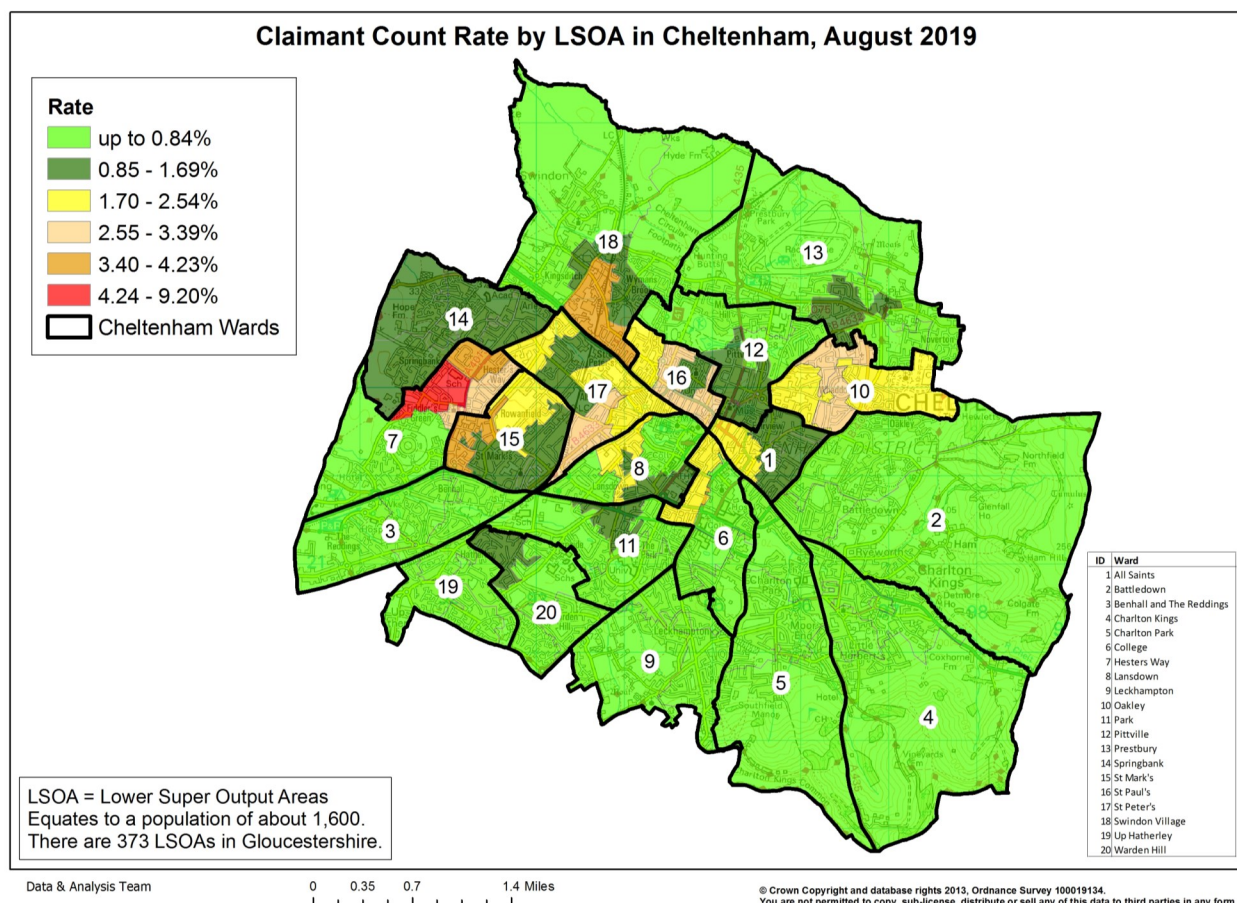
Table 10 shows overall claimant rates for Tewkesbury Borough wards and their position relative to all wards in Gloucestershire.

PART 5: MAP SHOWING DISTRIBUTION OF CLAIMANT RATE ACROSS GLOUCESTERSHIRE

Claimant Count Rate by LSOA in Gloucestershire, August 2019



PART 5: MAP SHOWING DISTRIBUTION OF CLAIMANT RATE ACROSS GLOUCESTERSHIRE



PART 6: YOUTH UNEMPLOYMENT(18-24 year olds)

Youth Claimant Rate and Claimant Count

Figure 15: Claimant Count for Gloucestershire over the past year

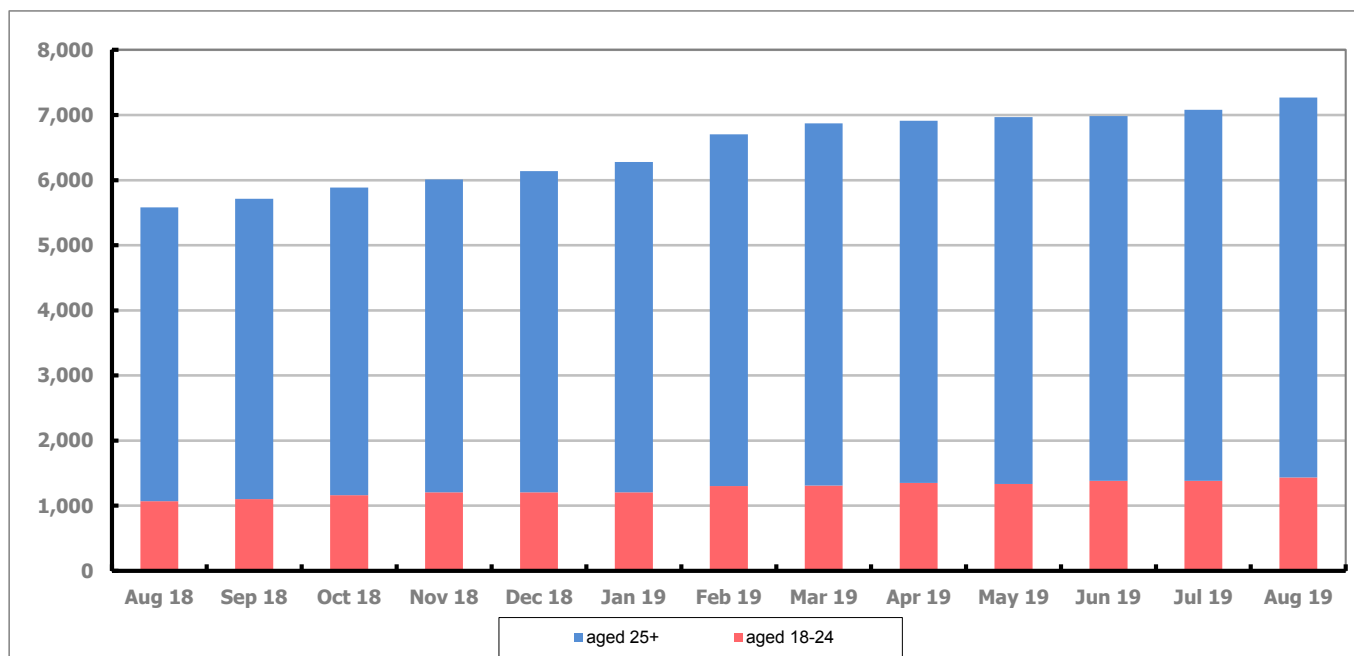


Figure 15 shows that in August 2019, 1,435 people aged 18-24 were claiming Job Seekers Allowance and Universal Credit who were not in work in Gloucestershire, this represents 19.7% of total working age claimants.

PART 7: YOUNG PEOPLE NOT IN EDUCATION, EMPLOYMENT OR TRAINING (NEET) IN GLOUCESTERSHIRE

Data provided by Gloucestershire Youth Support Team on the situation of young people (16-18) in Gloucestershire who are not in education, employment or formal training.

Gloucestershire Youth Support Team is required to report performance with the 16-18 age range against nationally defined criteria for counting the NEET group. The NEET group includes young people actively seeking education, employment or training as well as those young people who are either not yet ready or who are unable to access these opportunities because of their personal circumstances. The figures quoted below include young people in both of these categories.

Summary

At the end of August 2019 there were 326 young people aged 16-18 not in education, employment or training in Gloucestershire and this figure translates into an adjusted (*) 16-18 NEET population of 2.68%. The total number of NEET young people increased by 2 in August 2019 compared to July 2019, two districts saw a decrease in their figures, two districts saw an increase in their figure and two districts stayed the same.

Total NEET Group by District Area

August 2019 NEET data

	Cheltenham	Cotswold	Forest	Gloucester	Stroud	Tewkesbury	Total
Total NEET	65	27	48	111	35	40	326
Cohort	2121	1678	1636	2975	2551	1754	12715
% NEET	3.06	1.61	2.93	3.73	1.37	2.28	2.68*

If you would like to receive any further information on Gloucestershire's NEET strategy then please contact Lynne.Speak@Prospects.co.uk or telephone 07900 391182.

(*) Adjustment includes a proportion of young people aged 16-18 whose outcomes are not known to Gloucestershire Youth Support Team.