

Unemployment Bulletin

Issue 77 December 2014

Contents

Part 1: Summary

A summary of unemployment data at district, County, regional and national level 1

Part 2: County

Unemployment figures for the County compared to the South West and the rest of the UK 3

Part 3: Districts

A comparative break down of unemployment figures by district 4

Part 4: Wards

Further breakdown of unemployment figures by ward:

Cheltenham	6
Cotswolds	8
Forest of Dean	10
Gloucester	12
Stroud	14
Tewkesbury	16

Part 5: Map

Distribution of claimant rate across Gloucestershire 18

Part 6: Youth Unemployment

Unemployment data for the 18-24 year old age group 20

Part 7: Young People

Data about Young People Not in Education, Employment or Training (NEET) 22

Please note: the ward and LSOA boundaries used in this report have been updated. This means figures for these areas are not comparable with those reported in previous bulletins.

INTRODUCTION

The Unemployment Bulletin provides a monthly update on unemployment data for Gloucestershire, the South West region and the United Kingdom. It is produced by the Strategic Needs Analysis Team in the County Council's Strategy and Challenge function. The data is sourced from the Office for National Statistics via Nomis (www.nomis.co.uk).

The claimant count measures the number of people claiming unemployment-related benefit (currently Job Seeker's allowance). The claimant rate is the number of claimants as a proportion of the working age population.

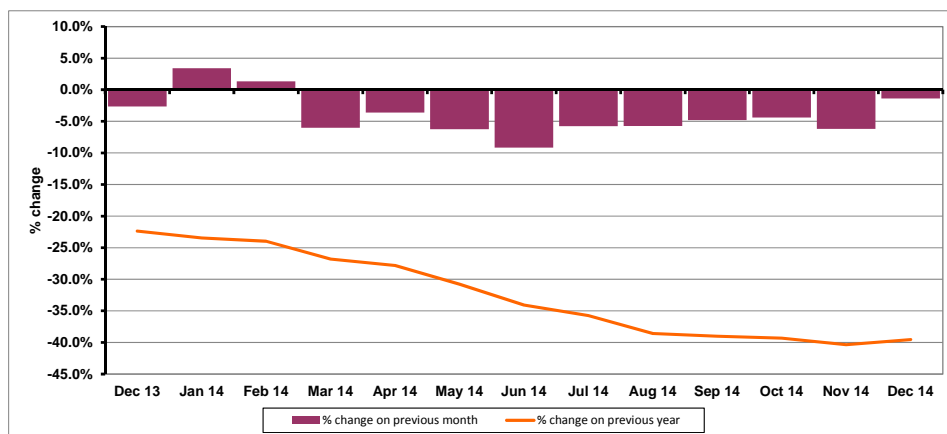
PART 1: SUMMARY

The claimant rate in Gloucestershire was 1.2% in December 2014. This remained the same as the November 2014 figure. The South West rate decreased from the previous month to 1.2%, while the UK rate decreased to 2.0%. Gloucestershire's rate was the same as the South West average of 1.2%, and 0.8% lower than the UK average of 2.0%.

The claimant count in Gloucestershire in December 2014 decreased by 64 people. The amount of people claiming in December 2014 was 1.4% lower than the number in November 2014. This compares to a 2.9% decrease in the South West and the UK.

The year on year claimant count in Gloucestershire has increased since last month. The count was 39.5% lower in December 2014 than at the same point in the previous year as shown in the graph below.

Gloucestershire claimants - Month on Month and Year on Year change: December 2013 to December 2014



Source: ONS Crown Copyright Reserved

Produced by:

Strategic Needs Analysis Team
Strategy and Challenge
Gloucestershire County Council
January 2015

DISTRICTS AT A GLANCE

At a glance unemployment information grouped by district. Includes:

Claim count: Total number of people claiming Job Seekers Allowance in December 2014

Compared to last month: How much larger/smaller December's claimant count is compared to November, expressed as a %

Claimant rate: The % of working population claiming Job Seekers Allowance in December 2014

Highest claiming ward: The ward with the highest claim count in that district and the rate

CHELTENHAM BOROUGH

Claim count:	926
Compared to last month:	1.5%
Claimant rate:	1.2%
Highest claiming ward	Oakley (2.4%)

GLOUCESTER CITY

Claim count:	1,639
Compared to last month:	-2.7%
Claimant rate:	2.0%
Highest claiming ward	Barton and Tredworth & Westgate (4.3%)

COTSWOLD DISTRICT

Claim count:	315
Compared to last month:	-4.0%
Claimant rate:	0.6%
Highest claiming ward	Cirencester Watermoor (1.4%)

STROUD DISTRICT

Claim count:	589
Compared to last month:	-0.7%
Claimant rate:	0.8%
Highest claiming ward	Central (1.9%)

FOREST OF DEAN

Claim count:	598
Compared to last month:	-5.7%
Claimant rate:	1.2%
Highest claiming ward	Cinderford West (2.8%)

TEWKESBURY BOROUGH

Claim count:	547
Compared to last month:	4.0%
Claimant rate:	1.1%
Highest claiming ward	Tewkesbury Prior's Park (3.3%)

YOUNG PEOPLE NOT IN EDUCATION, EMPLOYMENT OR TRAINING (NEET)

At the end of December 2014 there were 564 young people aged 16-18 not in education, employment or training in Gloucestershire and this figure translates into an adjusted (*) 16-18 NEET population of 3.72%.

PART 2: UK, SW AND GLOUCESTERSHIRE INDICATORS

The unemployment situation in Gloucestershire compared to the South West and the UK.

Claimant Rate

Figure 1: Claimant Rate for Gloucestershire, the South West and UK over the past year

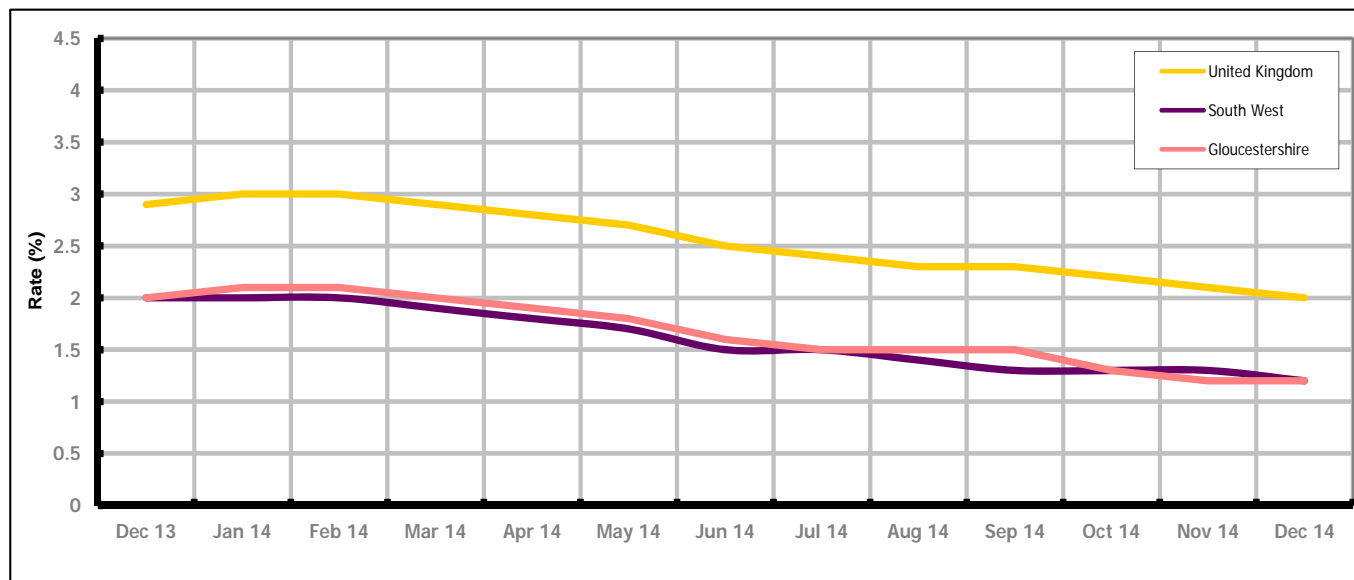


Figure 1 shows the claimant rate for Gloucestershire at 1.2% in December 2014. With the exception of July, October, November and December 2014, and December 2013, the rate has been slightly higher than the South West average. It has been persistently lower by approximately 0.8% against the UK average. The December 2014 rate remained the same as the November 2014 figure.

Claimant Count

Table 1: Analysis of UK, South West and Gloucestershire Claimant Counts

Area	Claimant Count in December 2014	% change on November 2014	Average % change over the last six months	Consecutive months decreasing
UK	823,880	-2.9%	-3.1%	9
South West	40,855	-2.9%	-2.8%	9
Gloucestershire	4,614	-1.4%	-3.8%	9

Table 1 shows that in December 2014, the number of claimants in Gloucestershire was 1.4% lower than the number in November 2014.

The average change in claimants in Gloucestershire for the six months to December 2014 was -3.8%.

PART 3: LOCAL AUTHORITY DISTRICT ANALYSIS

Claimant Rate and Claimant Count

Figure 2: Claimant Rate (%) across Gloucestershire - December 2014

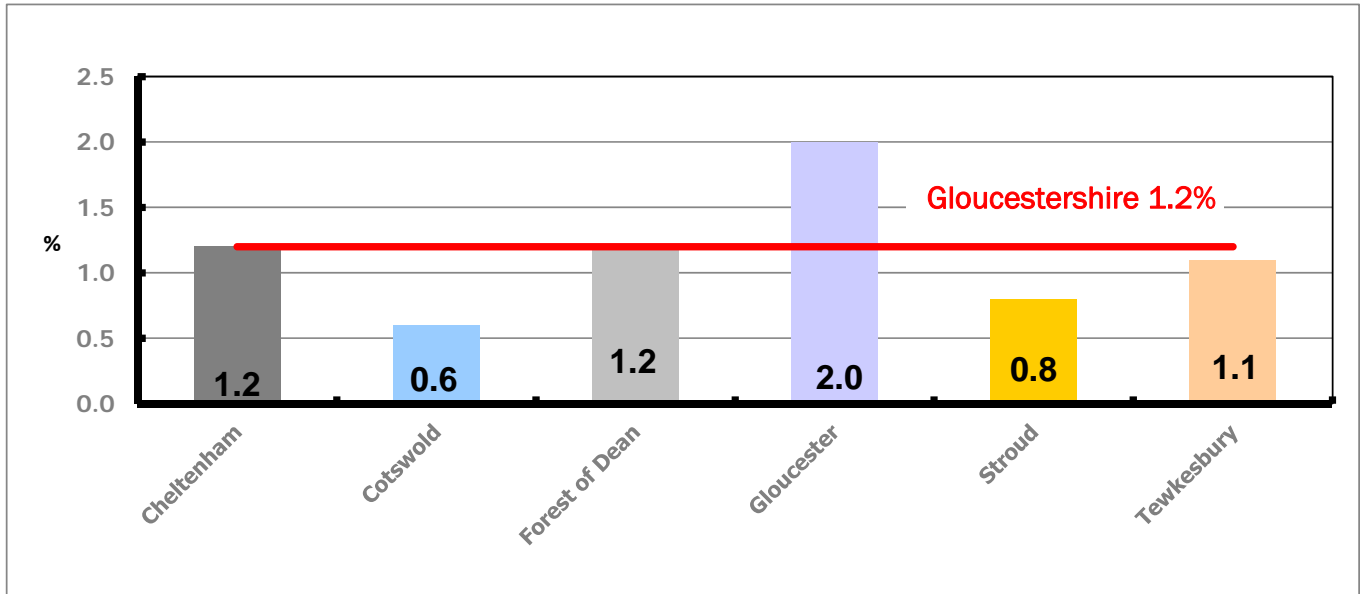


Figure 2 shows the claimant rate for December 2014 in Gloucestershire. Between November 2014 and December 2014, the rate in Tewkesbury increased, the rate in Cotswold, Forest of Dean, Gloucester and Stroud decreased while the rate in Cheltenham remained the same.

Figure 3: Total claimants over the past year across Gloucestershire Districts

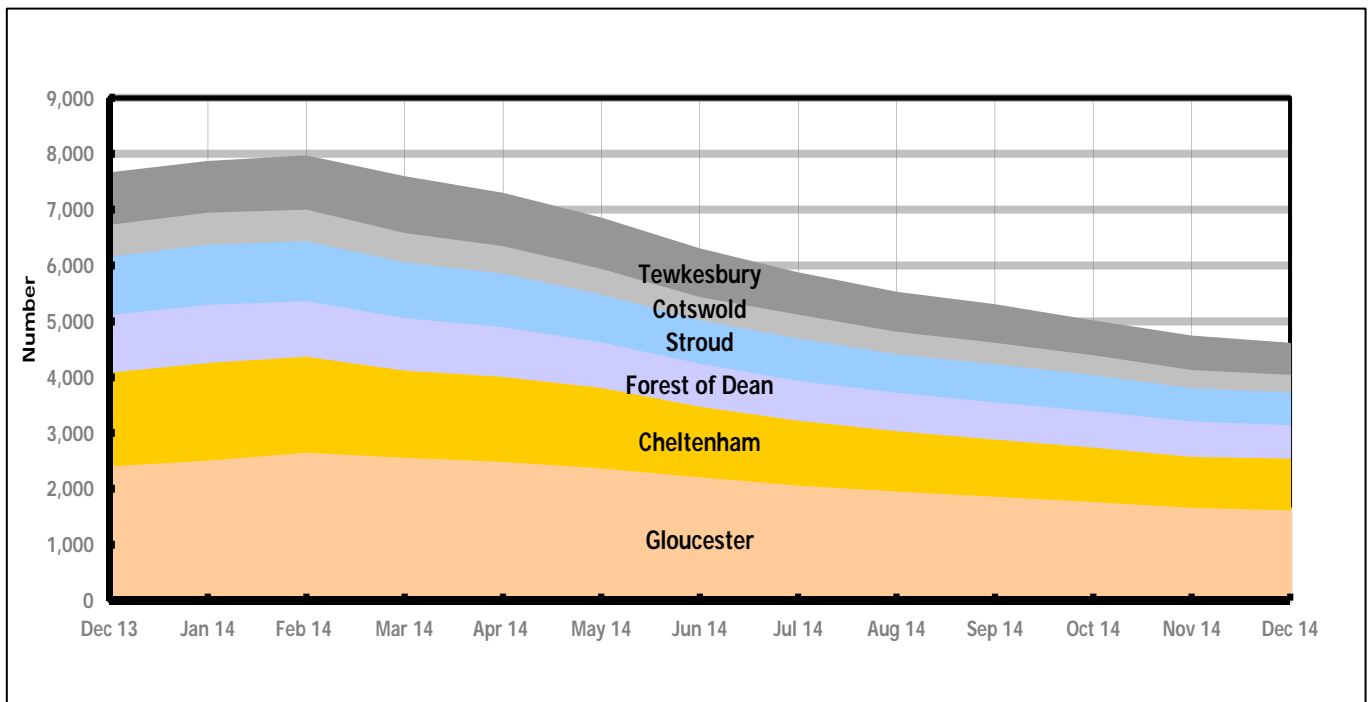


Figure 3 shows the overall claimant count by district over the past year. The number of claimants has decreased over the last year, with the exception of January and February when there was an increase.

Table 2: Analysis of Gloucestershire and District Claimant Counts

Total	Dec 14 Number	Dec 14 Rate	Nov 14 Number	Nov 14 Rate	Monthly change	% monthly change	Monthly change of rate
Gloucestershire	4,614	1.2	4,678	1.2	-64	-1.4%	0.0
Cheltenham	926	1.2	912	1.2	14	1.5%	0.0
Cotswold	315	0.6	328	0.7	-13	-4.0%	-0.1
Forest of Dean	598	1.2	634	1.3	-36	-5.7%	-0.1
Gloucester	1,639	2.0	1,685	2.1	-46	-2.7%	-0.1
Stroud	589	0.8	593	0.9	-4	-0.7%	-0.1
Tewkesbury	547	1.1	526	1.0	21	4.0%	0.1

Table 2 shows the change in the claimant count in December 2014 compared to November 2014. Cheltenham and Tewkesbury saw an increase in the number of claimants, while all of the other districts saw a decrease.

Table 3: Analysis of Male Gloucestershire and District Claimant Counts

Male	Dec 14 Number	Dec 14 Rate	Nov 14 Number	Nov 14 Rate	Monthly change	% monthly change	Monthly change of rate
Gloucestershire	3,033	1.6	3,026	1.6	7	0.2%	0.0
Cheltenham	625	1.6	614	1.6	11	1.8%	0.0
Cotswold	211	0.9	219	0.9	-8	-3.7%	0.0
Forest of Dean	391	1.5	403	1.6	-12	-3.0%	-0.1
Gloucester	1,095	2.7	1,112	2.8	-17	-1.5%	-0.1
Stroud	374	1.1	353	1.0	21	5.9%	0.1
Tewkesbury	337	1.3	325	1.3	12	3.7%	0.0

Table 3 shows the change in the male claimant count in December 2014 compared to November 2014. Cheltenham, Stroud and Tewkesbury saw an increase in the number of male claimants, while all of the other districts saw a decrease.

Table 4: Analysis of Female Gloucestershire and District Claimant Counts

Female	Dec 14 Number	Dec 14 Rate	Nov 14 Number	Nov 14 Rate	Monthly change	% monthly change	Monthly change of rate
Gloucestershire	1,581	0.8	1,652	0.9	-71	-4.3%	-0.1
Cheltenham	301	0.8	298	0.8	3	1.0%	0.0
Cotswold	104	0.4	109	0.4	-5	-4.6%	0.0
Forest of Dean	207	0.8	231	0.9	-24	-10.4%	-0.1
Gloucester	544	1.4	573	1.4	-29	-5.1%	0.0
Stroud	215	0.6	240	0.7	-25	-10.4%	-0.1
Tewkesbury	210	0.8	201	0.8	9	4.5%	0.0

Table 4 shows the change in the female claimant count in December 2014 compared to November 2014. Cheltenham and Tewkesbury saw an increase in the number of female claimants, while all of the other districts saw a decrease.

PART 4: LOCAL AUTHORITY DISTRICT AND WARD ANALYSIS

This section covers the six districts and a comparison of their constituent wards.

4.1 Cheltenham Borough

Claimant Rate and Claimant Count

Figure 4: Cheltenham Borough claimant rate over the last year

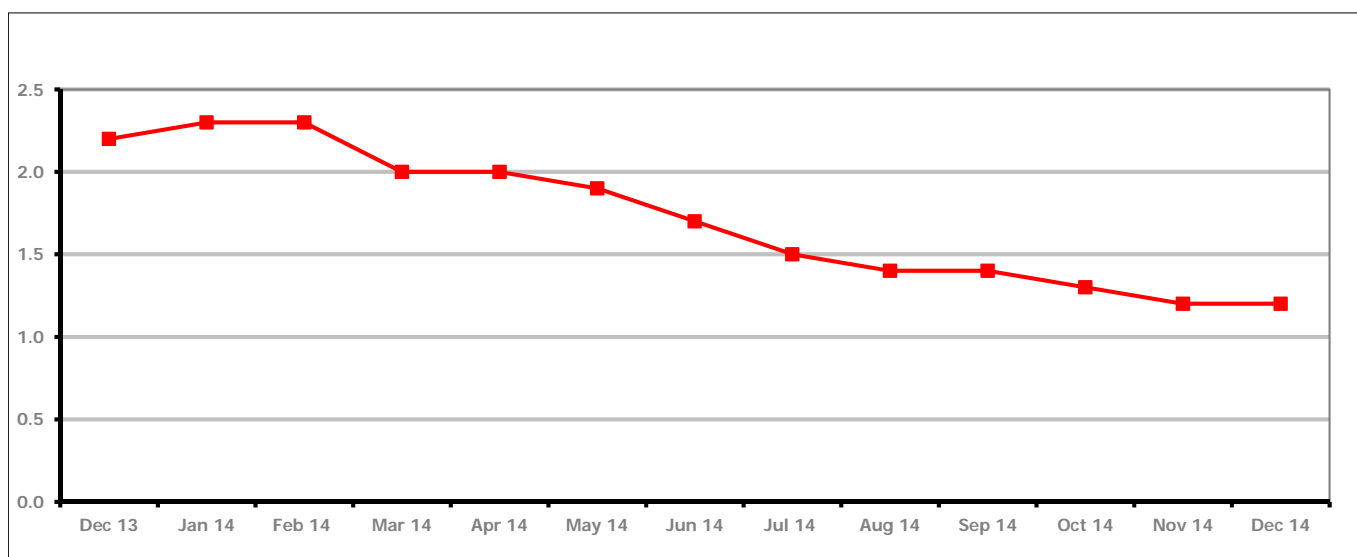


Figure 4 shows the claimant rate in Cheltenham remained the same as last month at 1.2%.

Figure 5: Cheltenham Borough claimants - Month on Month and Year on Year change

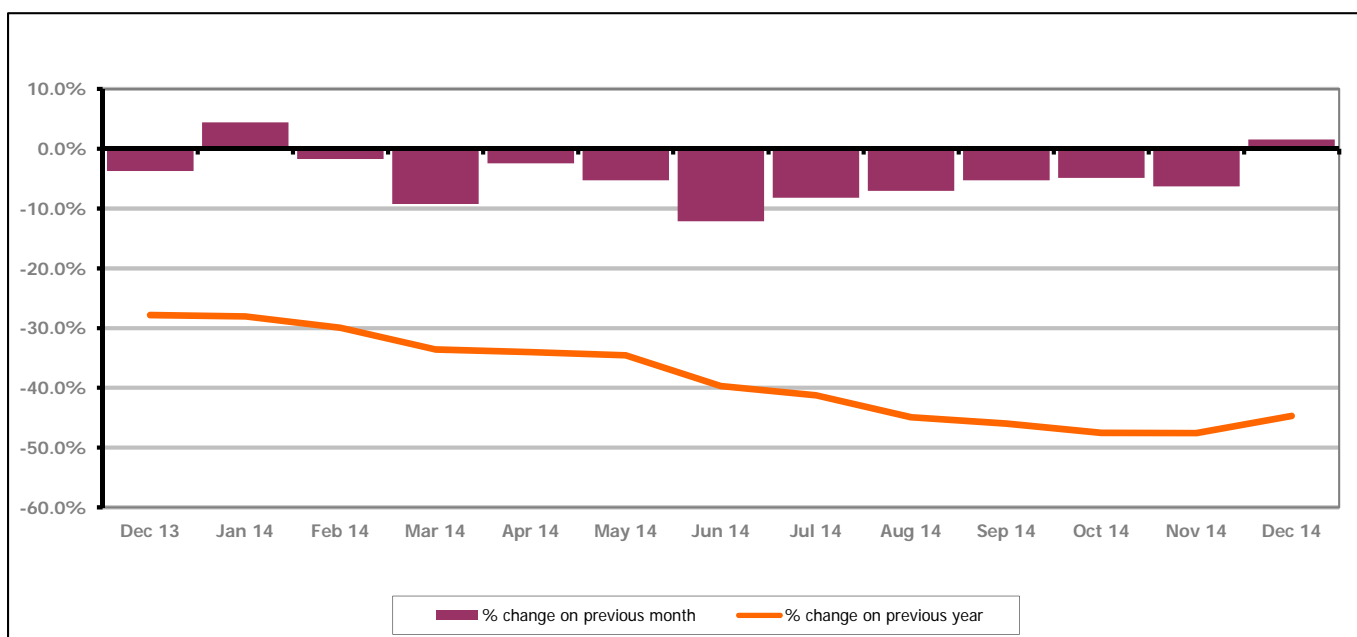


Figure 5 shows the claimant count increased by 1.5% since last month. The change on the previous year has increased between November 2014 and December 2014 to -44.7%.

PART 4: LOCAL AUTHORITY DISTRICT AND WARD ANALYSIS

4.1 Cheltenham Borough continued...

Figure 6: Claimant rates across Cheltenham Borough wards - December 2014

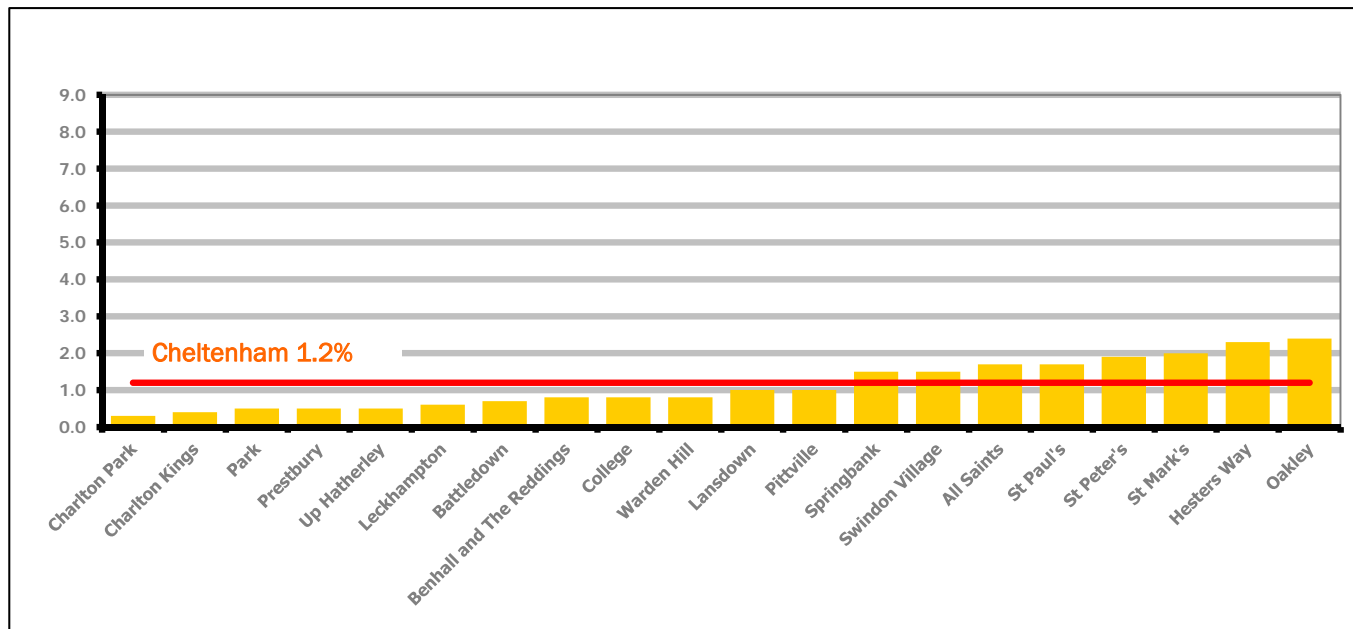


Figure 6 shows the claimant rates for Cheltenham Borough wards. The red line represents the average claimant rate across the Borough of 1.2%. Eight wards lie above the average.

Table 5: Analysis of Claimant Count at Cheltenham Borough ward level - December 2014

District	Ward	Rate	Rank*
Cheltenham	Charlton Park	0.3	5
Cheltenham	Charlton Kings	0.4	10
Cheltenham	Park	0.5	23
Cheltenham	Prestbury	0.5	23
Cheltenham	Up Hatherley	0.5	23
Cheltenham	Leckhampton	0.6	36
Cheltenham	Battledown	0.7	48
Cheltenham	Benhall and The Reddings	0.8	71
Cheltenham	College	0.8	71
Cheltenham	Warden Hill	0.8	71
Cheltenham	Lansdown	1.0	90
Cheltenham	Pittville	1.0	90
Cheltenham	Springbank	1.5	116
Cheltenham	Swindon Village	1.5	116
Cheltenham	All Saints	1.7	120
Cheltenham	St Paul's	1.7	120
Cheltenham	St Peter's	1.9	128
Cheltenham	St Mark's	2.0	131
Cheltenham	Hesters Way	2.3	133
Cheltenham	Oakley	2.4	134

bottom 10% of county
 first quartile of county
 second quartile of county
 third quartile of county
 fourth quartile of county
 highest 10% of county

* 1 = "best" and 142 = "worst"

Table 5 shows overall claimant rates for Cheltenham Borough wards and their position relative to all wards in Gloucestershire.

PART 4: LOCAL AUTHORITY DISTRICT AND WARD ANALYSIS

4.2 Cotswold District

Claimant Rate and Claimant Count

Figure 7: Cotswold District claimant rate over the last year

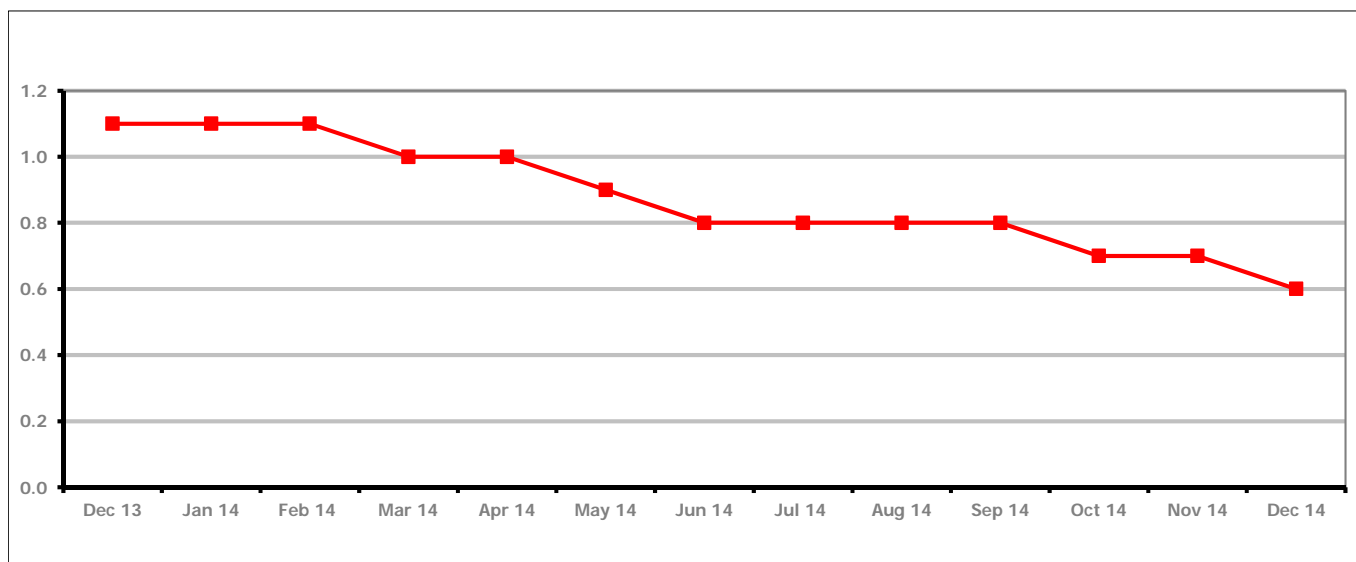


Figure 7 shows the claimant rate in Cotswold District decreased in December 2014 to 0.6%.

Figure 8: Cotswold District claimants - Month on Month and Year on Year change

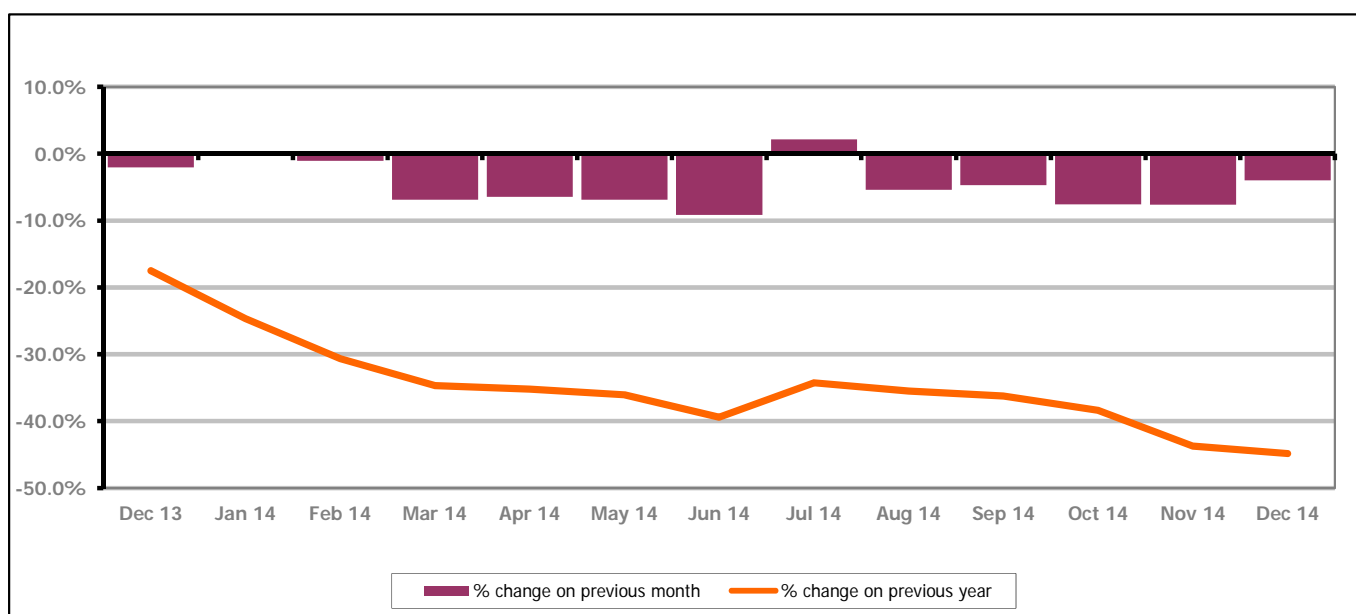


Figure 8 shows the claimant count decreased by 4.0% since November 2014. The change on the previous year has decreased between November 2014 and December 2014 to -44.8%.

PART 4: LOCAL AUTHORITY DISTRICT AND WARD ANALYSIS

4.2 Cotswold District continued...

Figure 9: Claimant rates across Cotswold District wards - December 2014

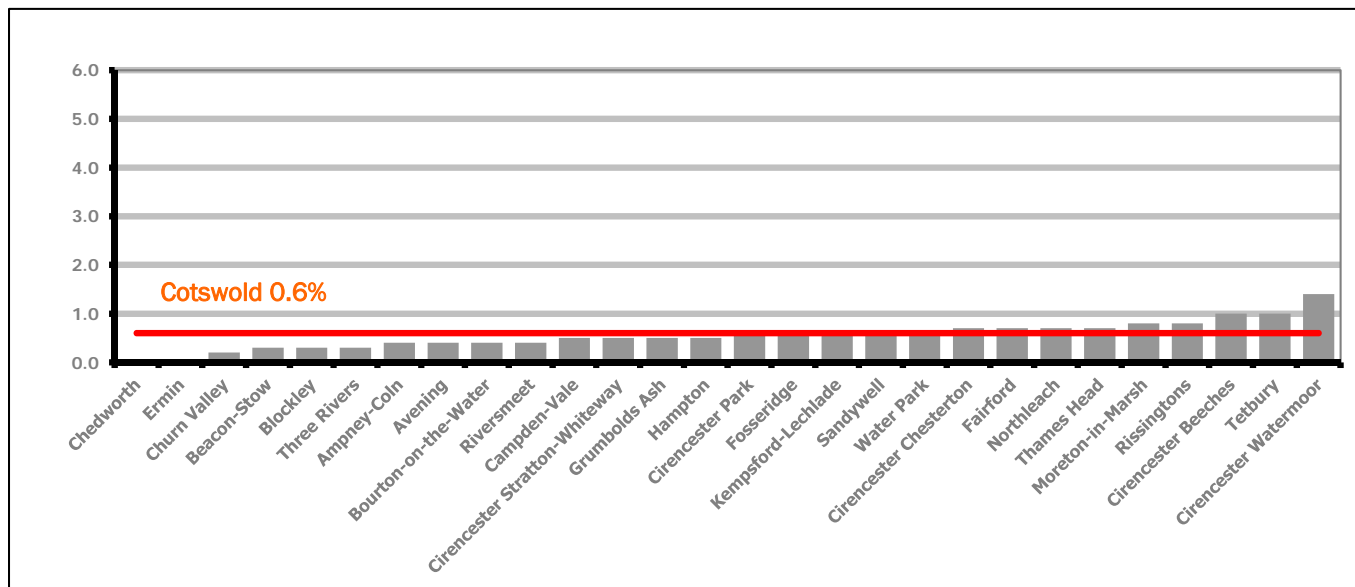
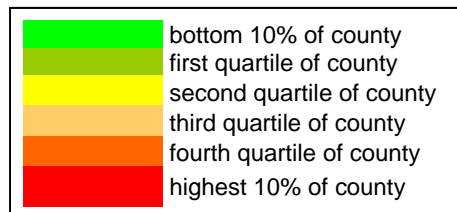


Figure 9 shows the claimant rates for Cotswold District wards. The red line represents the average claimant rate across the District of 0.6%. Nine wards lie above the average.

Table 6: Analysis of Claimant Count at Cotswold District ward level - December 2014

District	Ward	Rate	Rank*
Cotswolds	Chedworth	<0.2	1
Cotswolds	Ermin	<0.2	1
Cotswolds	Churn Valley	0.2	3
Cotswolds	Beacon-Stow	0.3	5
Cotswolds	Blockley	0.3	5
Cotswolds	Three Rivers	0.3	5
Cotswolds	Ampney-Coln	0.4	10
Cotswolds	Avening	0.4	10
Cotswolds	Bourton-on-the-Water	0.4	10
Cotswolds	Riversmeet	0.4	10
Cotswolds	Campden-Vale	0.5	23
Cotswolds	Cirencester Stratton-Whiteway	0.5	23
Cotswolds	Grumbolds Ash	0.5	23
Cotswolds	Hampton	0.5	23
Cotswolds	Cirencester Park	0.6	36
Cotswolds	Fosseridge	0.6	36
Cotswolds	Kempsford-Lechlade	0.6	36
Cotswolds	Sandywell	0.6	36
Cotswolds	Water Park	0.6	36
Cotswolds	Cirencester Chesterton	0.7	48
Cotswolds	Fairford	0.7	48
Cotswolds	Northleach	0.7	48
Cotswolds	Thames Head	0.7	48
Cotswolds	Moreton-in-Marsh	0.8	71
Cotswolds	Rissingtons	0.8	71
Cotswolds	Cirencester Beeches	1.0	90
Cotswolds	Tetbury	1.0	90
Cotswolds	Cirencester Watermoor	1.4	114



* 1 = "best" and 142 = "worst"

Table 6 shows overall claimant rates for Cotswold District wards and their position relative to all wards in Gloucestershire.

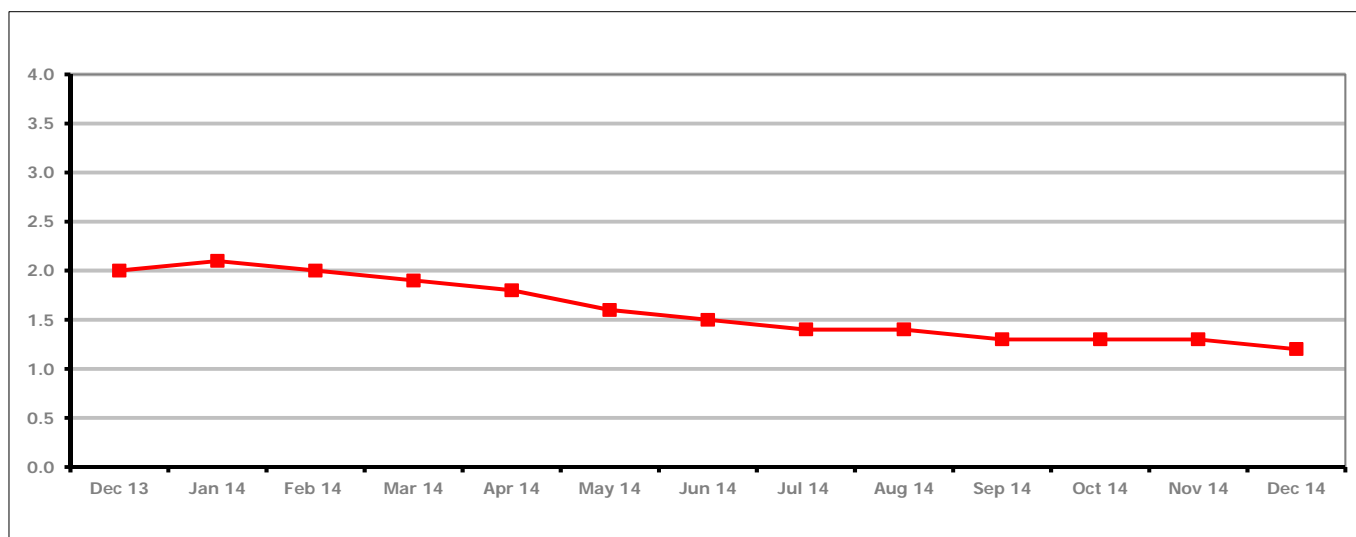
PART 4: LOCAL AUTHORITY DISTRICT AND WARD ANALYSIS**4.3 Forest of Dean District****Claimant Rate and Claimant Count***Figure 10: Forest of Dean District claimant rate over the last year*

Figure 10 shows the claimant rate in the Forest of Dean decreased in December 2014 to 1.2%.

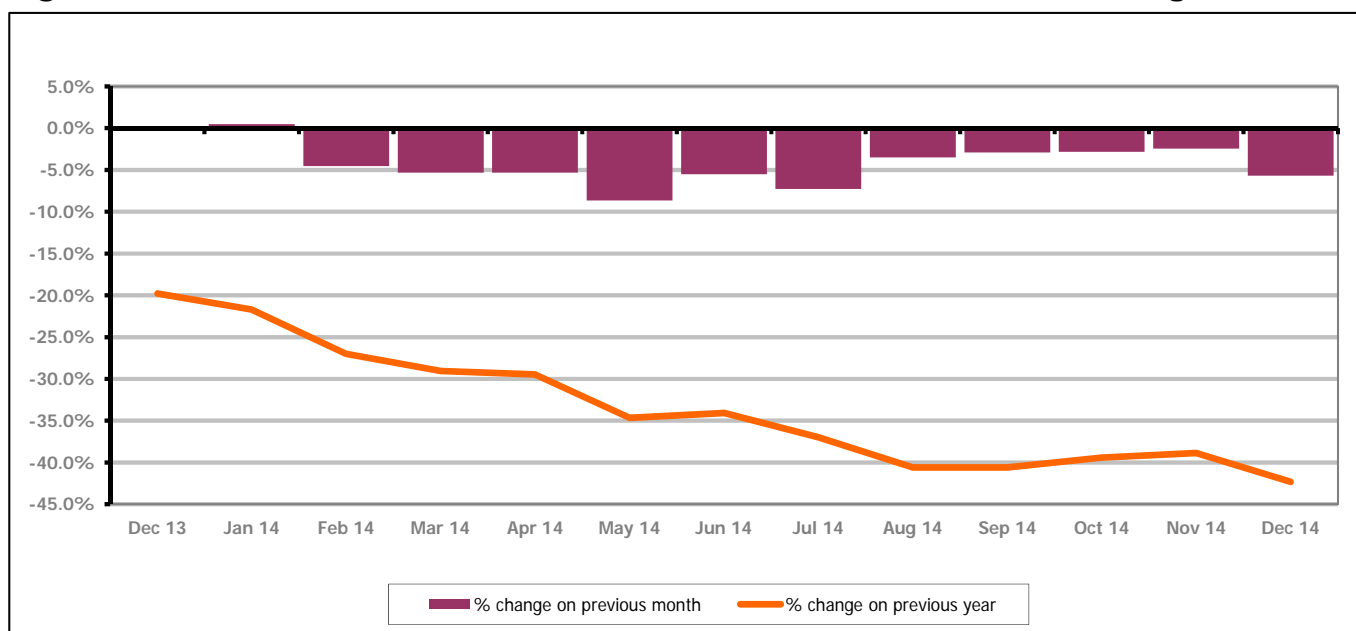
Figure 11: Forest of Dean District claimants - Month on Month and Year on Year change

Figure 11 shows the claimant count decreased by 5.7% since November 2014. The change on the previous year has decreased between November 2014 and December 2014 to -42.3%.

PART 4: LOCAL AUTHORITY DISTRICT AND WARD ANALYSIS

4.3 Forest of Dean District continued...

Figure 12: Claimant rates across Forest of Dean District wards - December 2014

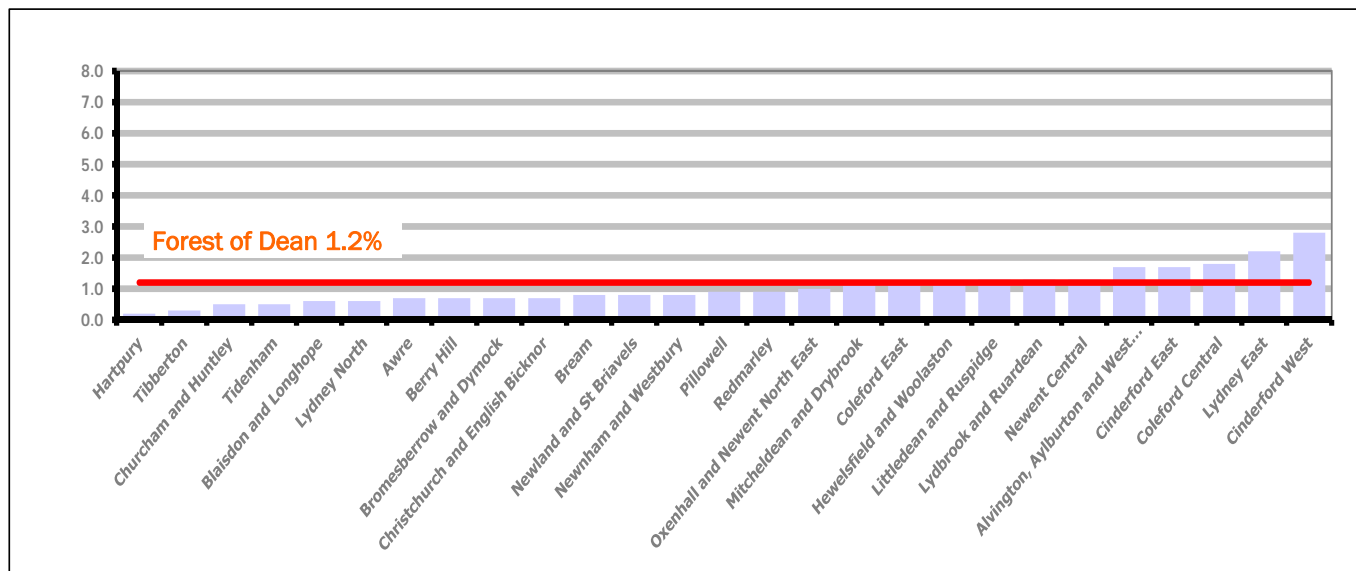


Figure 12 shows the claimant rates for Forest of Dean District wards. The red line represents the average claimant rate across the District of 1.2%. Eight wards lie above the average.

Table 7: Analysis of Claimant Count

District	Ward	Rate	Rank*
Forest	Hartpur	0.2	3
Forest	Tibberton	0.3	5
Forest	Churcham and Huntley	0.5	23
Forest	Tidenham	0.5	23
Forest	Blaisdon and Longhope	0.6	36
Forest	Lydney North	0.6	36
Forest	Awre	0.7	48
Forest	Berry Hill	0.7	48
Forest	Bromesberrow and Dymock	0.7	48
Forest	Christchurch and English Bicknor	0.7	48
Forest	Bream	0.8	71
Forest	Newland and St Briavels	0.8	71
Forest	Newnham and Westbury	0.8	71
Forest	Pillowell	0.9	82
Forest	Redmarley	0.9	82
Forest	Oxenhall and Newent North East	1.0	90
Forest	Mitcheldean and Drybrook	1.1	99
Forest	Coleford East	1.2	102
Forest	Hewelsfield and Woolaston	1.2	102
Forest	Littledean and Ruspidge	1.3	108
Forest	Lydbrook and Ruardean	1.3	108
Forest	Newent Central	1.3	108
Forest	Alvington, Aylburton and West Lydney	1.7	120
Forest	Cinderford East	1.7	120
Forest	Coleford Central	1.8	124
Forest	Lydney East	2.2	132
Forest	Cinderford West	2.8	136

	bottom 10% of county
	first quartile of county
	second quartile of county
	third quartile of county
	fourth quartile of county
	highest 10% of county

* 1 = "best" and 142 = "worst"

Table 7 shows overall claimant rates for the Forest of Dean District wards and their position relative to all wards in Gloucestershire.

PART 4: LOCAL AUTHORITY DISTRICT AND WARD ANALYSIS

4.4 Gloucester City

Claimant Rate and Claimant Count

Figure 13: Gloucester City claimant rate over the last year

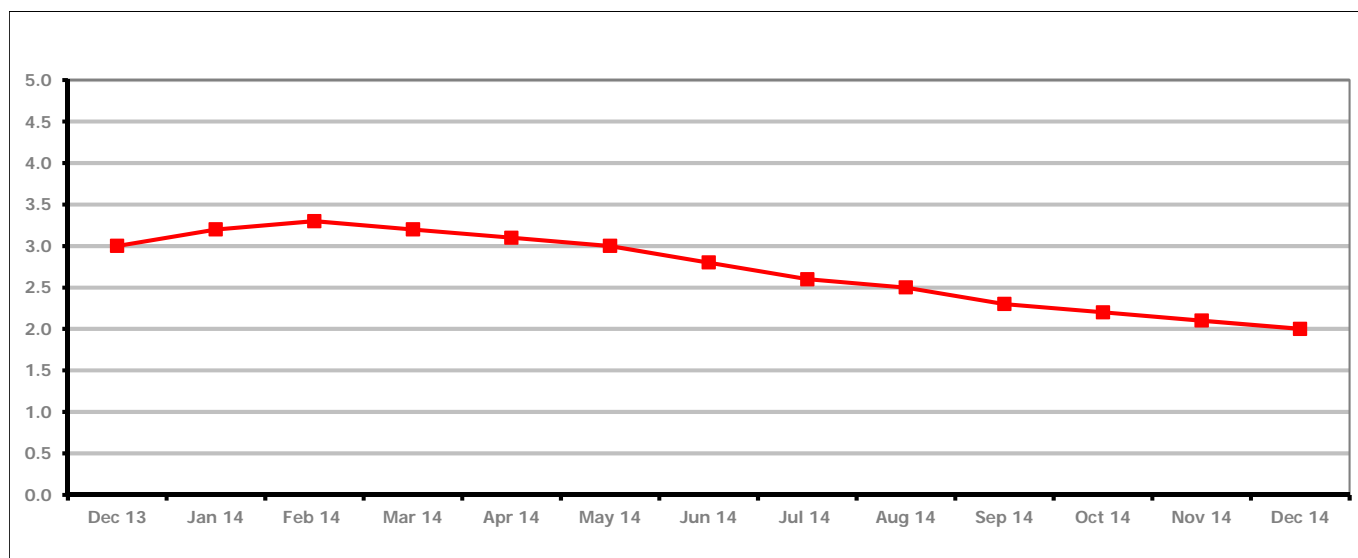


Figure 13 shows the claimant rate for Gloucester City decreased in December 2014 to 2.0%.

Figure 14: Gloucester City claimants - Month on Month and Year on Year change

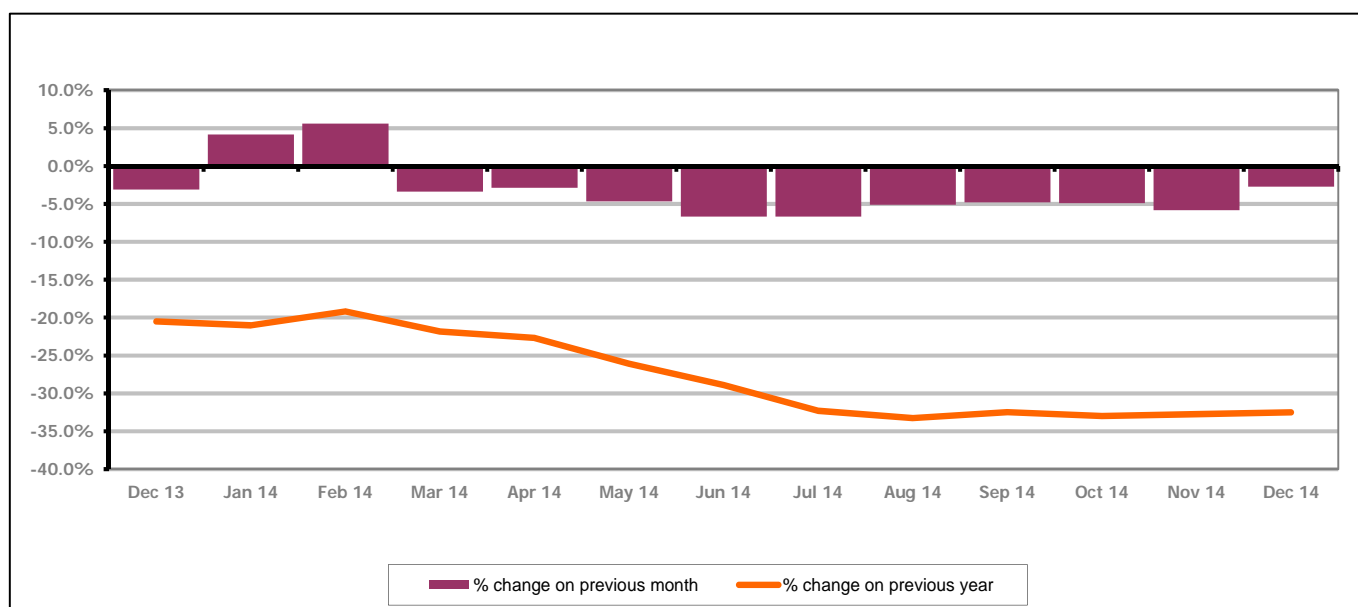


Figure 14 shows the monthly claimant count decreased by 2.7% since November 2014. The change on the previous year has decreased between November 2014 and December 2014 to -32.5%.

PART 4: LOCAL AUTHORITY DISTRICT AND WARD ANALYSIS

4.4 Gloucester City continued...

Figure 15: Claimant rates across Gloucester City wards - December 2014

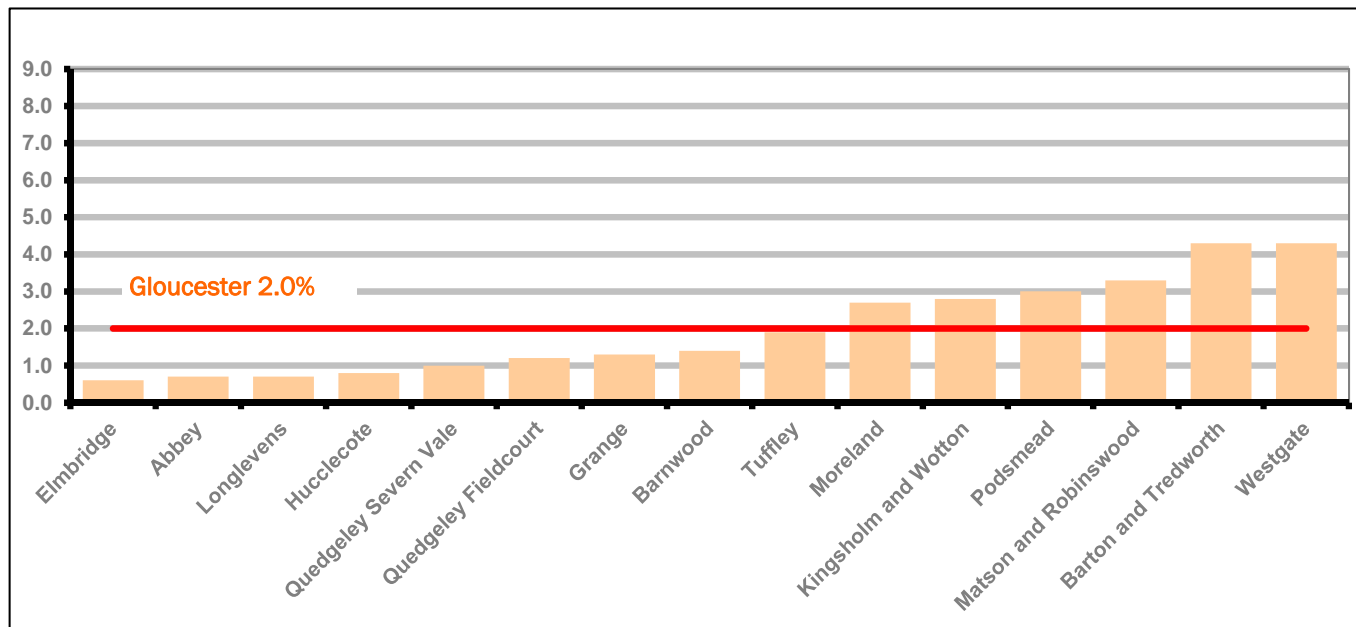


Figure 15 shows the claimant rates for Gloucester City district wards. The red line represents the average claimant rate across the City of 2.0%. Six wards lie above the average.

Table 8: Analysis of Claimant Count at Gloucester City ward level - December 2014

District	Ward	Rate	Rank*
Gloucester	Elmbridge	0.6	36
Gloucester	Abbey	0.7	48
Gloucester	Longlevens	0.7	48
Gloucester	Hucclecote	0.8	71
Gloucester	Quedgeley Severn Vale	1.0	90
Gloucester	Quedgeley Fieldcourt	1.2	102
Gloucester	Grange	1.3	108
Gloucester	Barnwood	1.4	114
Gloucester	Tuffley	1.9	128
Gloucester	Moreland	2.7	135
Gloucester	Kingsholm and Wotton	2.8	136
Gloucester	Podsmead	3.0	138
Gloucester	Matson and Robinswood	3.3	139
Gloucester	Barton and Tredworth	4.3	141
Gloucester	Westgate	4.3	141

bottom 10% of county
 first quartile of county
 second quartile of county
 third quartile of county
 fourth quartile of county
 highest 10% of county

* 1 = "best" and 142 = "worst"

Table 8 shows overall claimant rates for Gloucester City wards and their position relative to all wards in Gloucestershire.

PART 4: LOCAL AUTHORITY DISTRICT AND WARD ANALYSIS

4.5 Stroud District

Claimant Rate and Claimant Count

Figure 16: Stroud District claimant rate over the last year

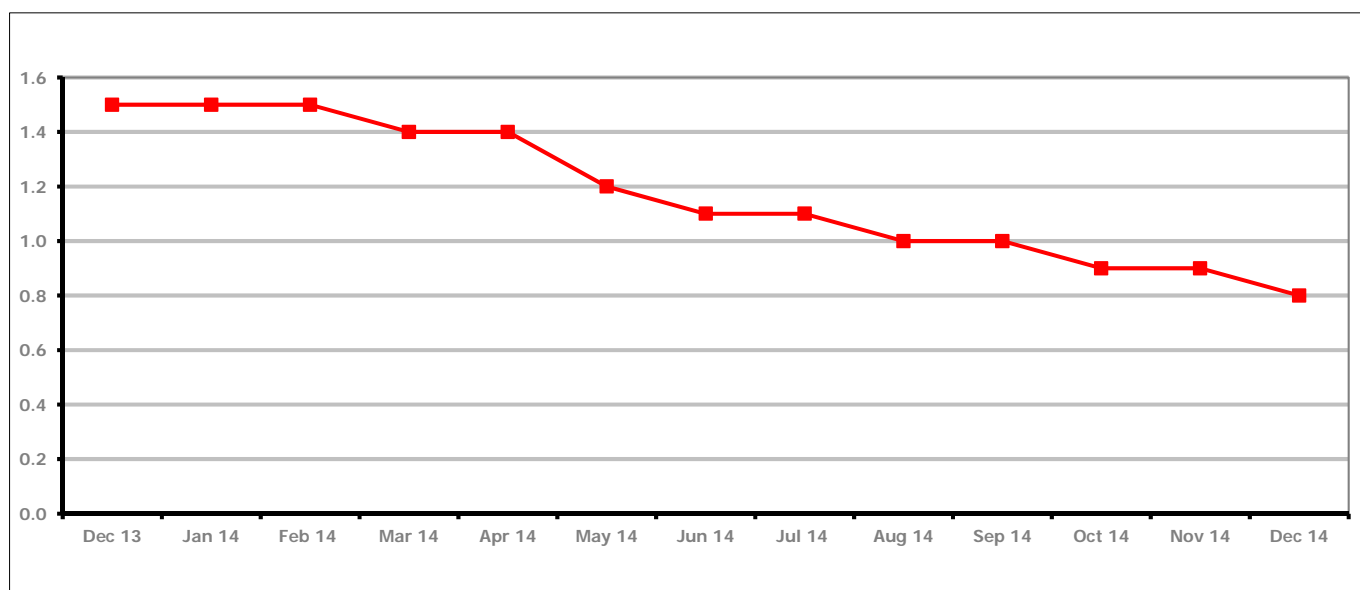


Figure 16 shows the claimant rate for Stroud decreased in December 2014 to 0.8%.

Figure 17: Stroud District claimants - Month on Month and Year on Year change

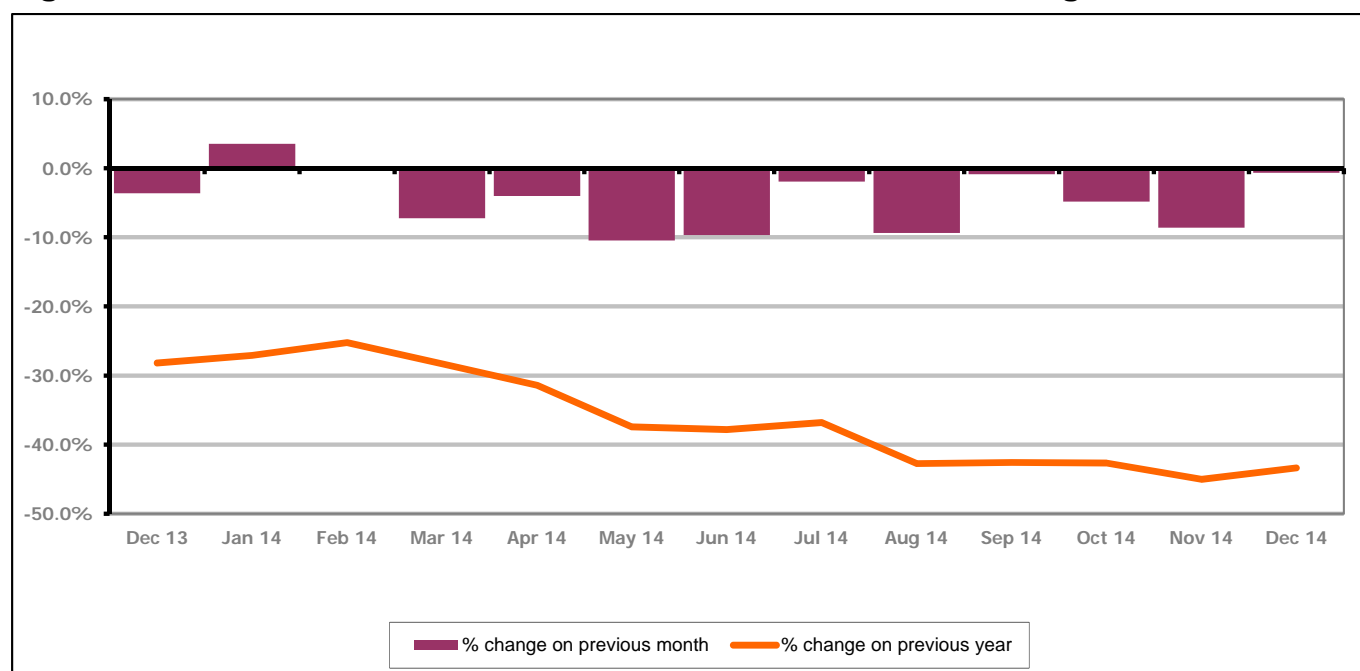


Figure 17 shows the monthly claimant count decreased by 0.7% since November 2014. The change on the previous year has increased between November 2014 and December 2014 to -43.4%.

PART 4: LOCAL AUTHORITY AND DISTRICT ANALYSIS

4.5 Stroud District continued...

Figure 18: Claimant rates across Stroud District wards - December 2014

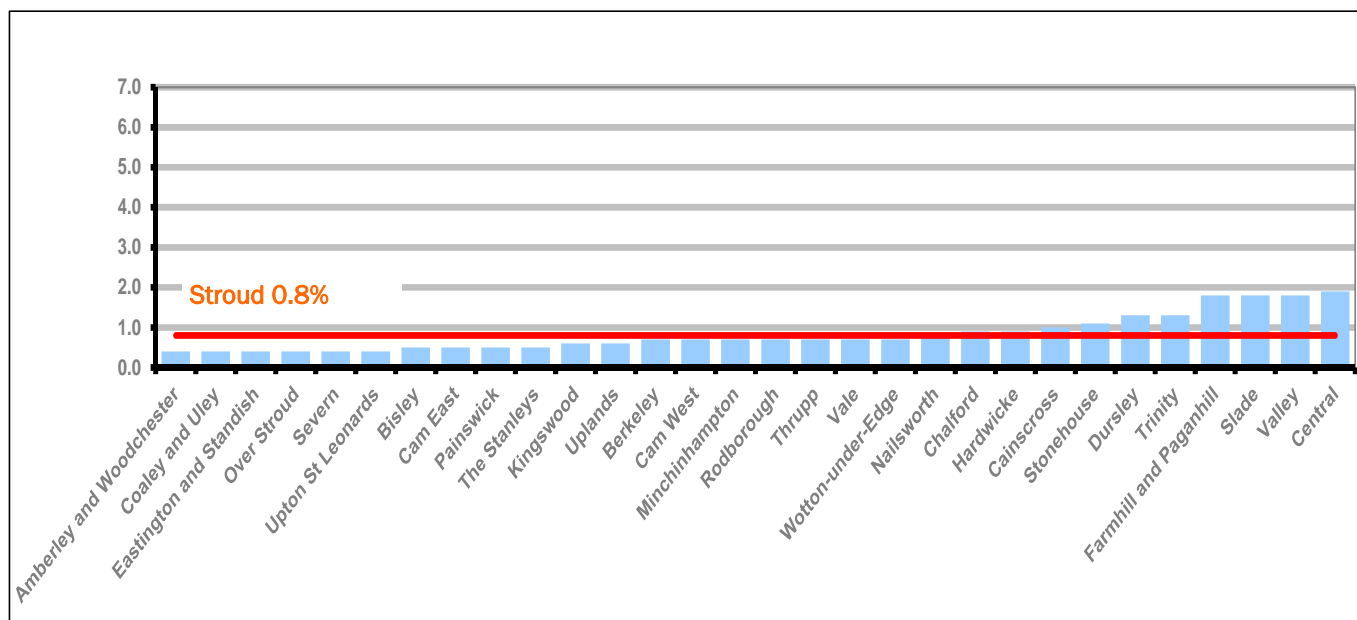
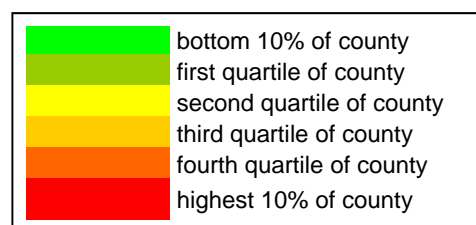


Figure 18 shows the claimant rates in Stroud District wards. The red line represents the average claimant rate across the District of 0.8%. Ten wards are above the average.

Table 9: Analysis of Claimant Count at Stroud District ward level - December 2014

District	Ward	Rate	Rank*
Stroud	Amberley and Woodchester	0.4	10
Stroud	Coaley and Uley	0.4	10
Stroud	Eastington and Standish	0.4	10
Stroud	Over Stroud	0.4	10
Stroud	Severn	0.4	10
Stroud	Upton St Leonards	0.4	10
Stroud	Bisley	0.5	23
Stroud	Cam East	0.5	23
Stroud	Painswick	0.5	23
Stroud	The Stanleys	0.5	23
Stroud	Kingswood	0.6	36
Stroud	Uplands	0.6	36
Stroud	Berkeley	0.7	48
Stroud	Cam West	0.7	48
Stroud	Minchinhampton	0.7	48
Stroud	Rodborough	0.7	48
Stroud	Thrupp	0.7	48
Stroud	Vale	0.7	48
Stroud	Wotton-under-Edge	0.7	48
Stroud	Nailsworth	0.8	71
Stroud	Chalford	0.9	82
Stroud	Hardwicke	0.9	82
Stroud	Cainscross	1.0	90
Stroud	Stonehouse	1.1	99
Stroud	Dursley	1.3	108
Stroud	Trinity	1.3	108
Stroud	Farmhill and Paganhill	1.8	124
Stroud	Slade	1.8	124
Stroud	Valley	1.8	124
Stroud	Central	1.9	128



* 1 = "best" and 142 = "worst"

Table 9 shows overall claimant rates for Stroud District wards and their position relative to all wards in Gloucestershire.

PART 4: LOCAL AUTHORITY DISTRICT AND WARD ANALYSIS

4.6 Tewkesbury District

Claimant Rate and Claimant Count

Figure 19: Tewkesbury District claimant rate over the last year

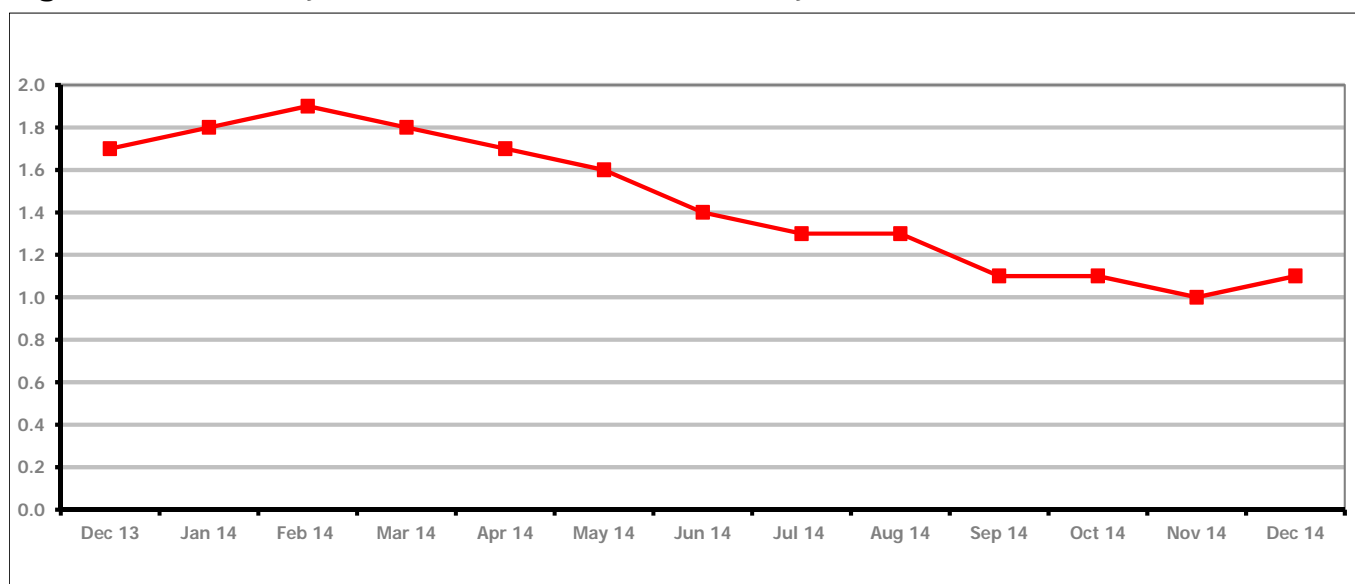


Figure 19 shows the claimant rate for Tewkesbury District increased in December 2014 to 1.1%.

Figure 20: Tewkesbury District claimants - Month on Month and Year on Year change

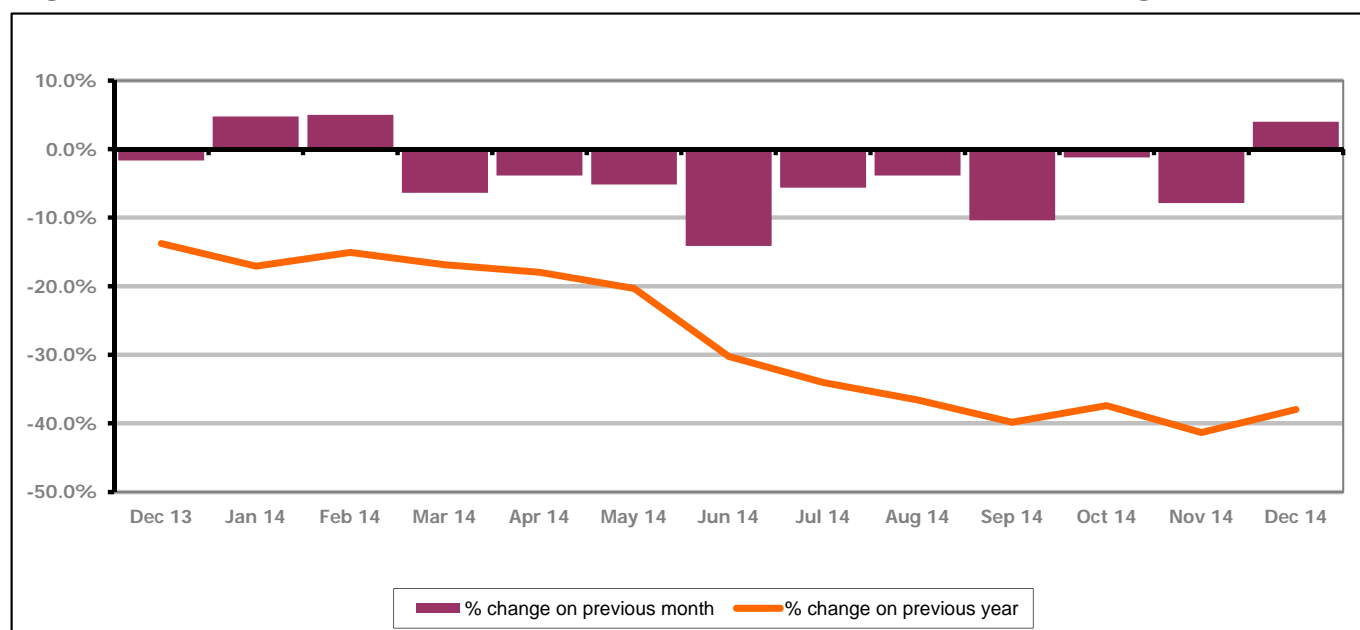


Figure 20 shows that the monthly claimant count increased by 4.0% since November 2014. The change on the previous year increased between November 2014 and December 2014 to -38.0%.

PART 4: LOCAL AUTHORITY AND DISTRICT ANALYSIS

4.6 Tewkesbury District continued...

Figure 21: Claimant rates across Tewkesbury District wards - December 2014

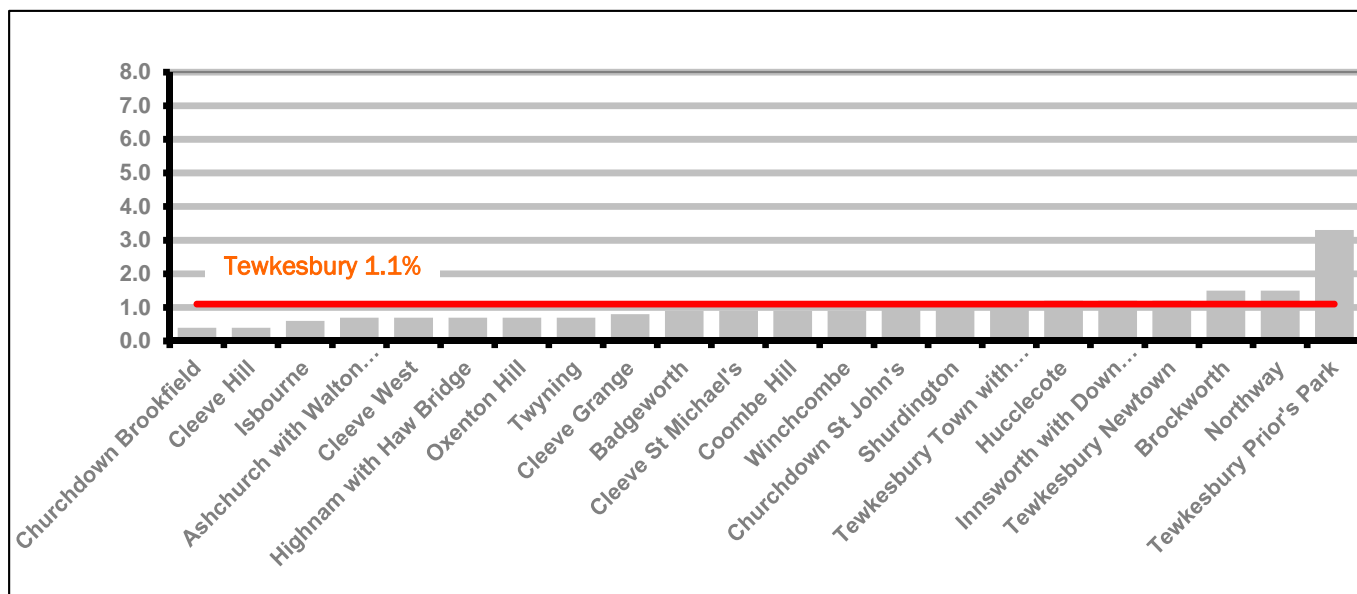
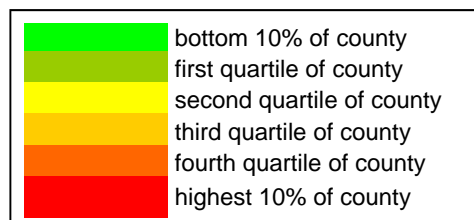


Figure 21 shows the claimant rates in Tewkesbury District wards. The red line represents the average claimant rate across the District of 1.1% and six wards are above the average.

Table 10: Analysis of Claimant Count at Tewkesbury District level - December 2014

District	Ward	Rate	Rank*
Tewkesbury	Churchdown Brookfield	0.4	10
Tewkesbury	Cleeve Hill	0.4	10
Tewkesbury	Isbourne	0.6	36
Tewkesbury	Ashchurch with Walton Cardiff	0.7	48
Tewkesbury	Cleeve West	0.7	48
Tewkesbury	Highnam with Haw Bridge	0.7	48
Tewkesbury	Oxenton Hill	0.7	48
Tewkesbury	Twynning	0.7	48
Tewkesbury	Cleeve Grange	0.8	71
Tewkesbury	Badgeworth	0.9	82
Tewkesbury	Cleeve St Michael's	0.9	82
Tewkesbury	Coombe Hill	0.9	82
Tewkesbury	Winchcombe	0.9	82
Tewkesbury	Churchdown St John's	1.0	90
Tewkesbury	Shurdington	1.0	90
Tewkesbury	Tewkesbury Town with Mitton	1.1	99
Tewkesbury	Hucclecote	1.2	102
Tewkesbury	Innsworth with Down Hatherley	1.2	102
Tewkesbury	Tewkesbury Newtown	1.2	102
Tewkesbury	Brockworth	1.5	116
Tewkesbury	Northway	1.5	116
Tewkesbury	Tewkesbury Prior's Park	3.3	139

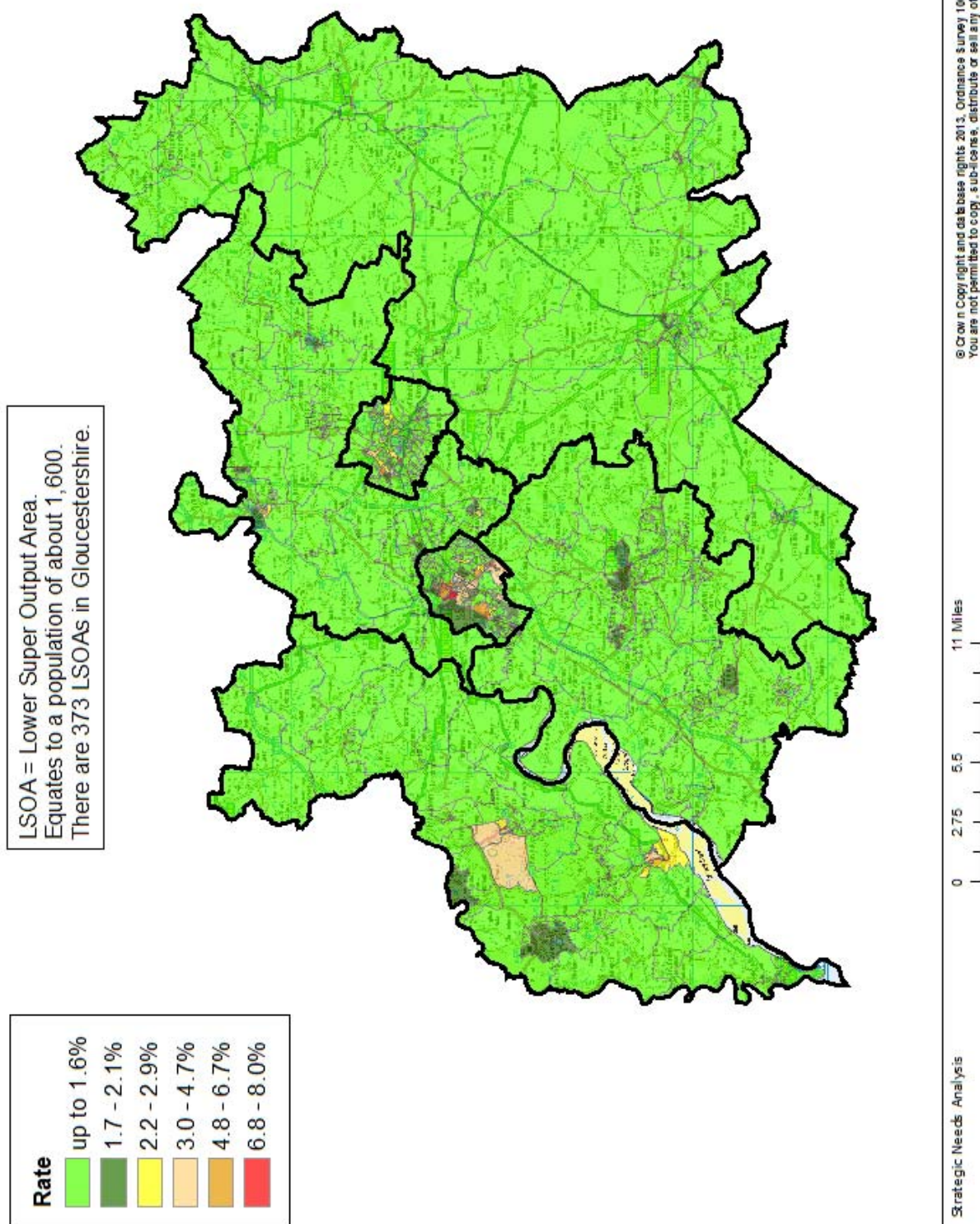


* 1 = "best" and 142 = "worst"

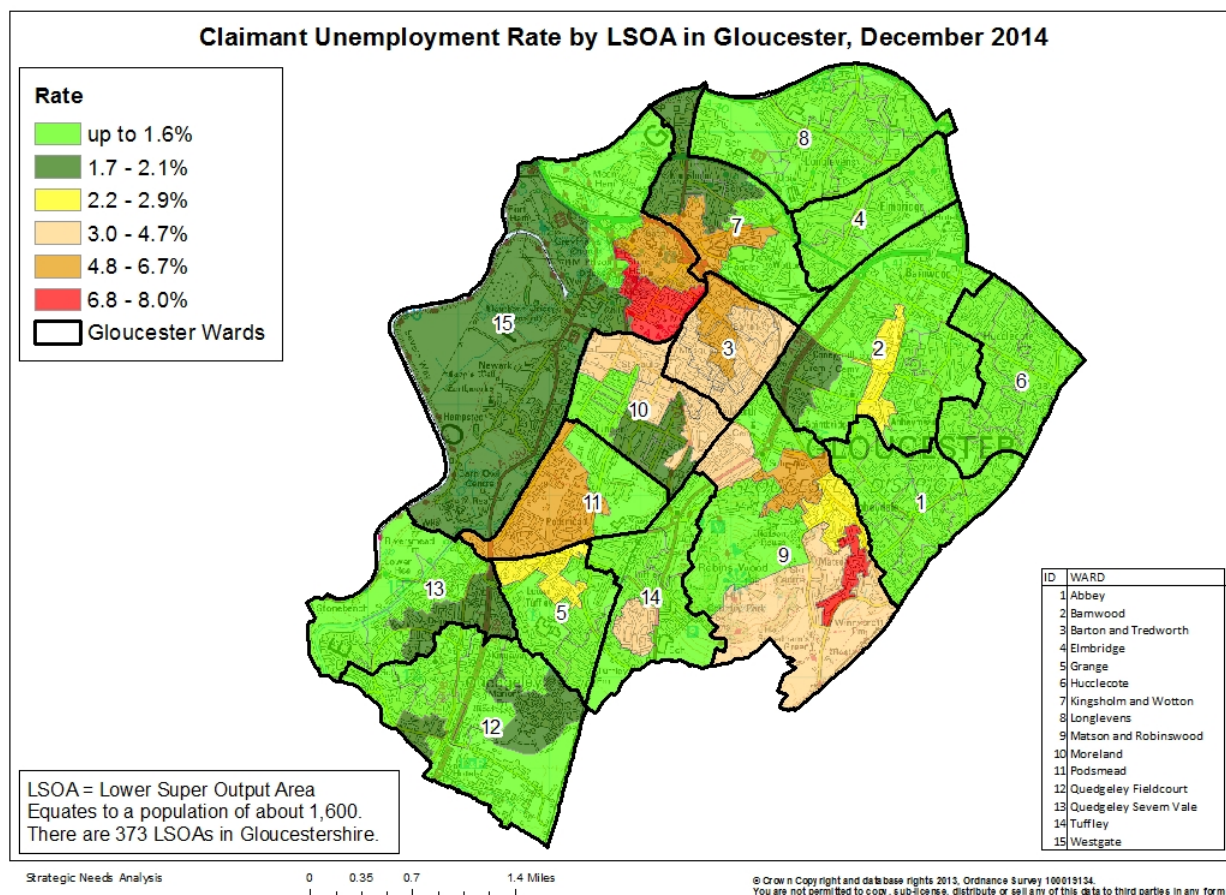
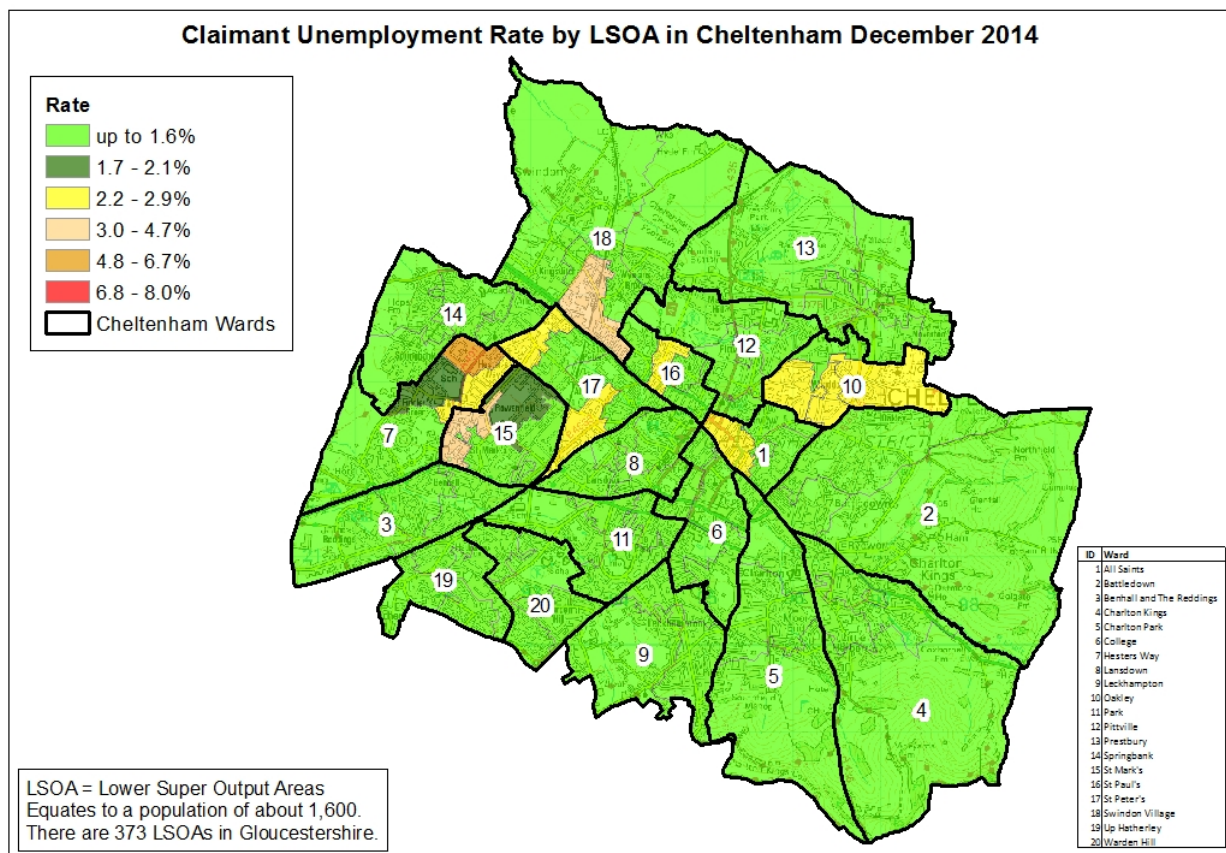
Table 10 shows overall claimant rates for Tewkesbury District wards and their position relative to all wards in Gloucestershire.

PART 5: MAP SHOWING DISTRIBUTION OF CLAIMANT RATE ACROSS GLOUCESTERSHIRE

Claimant Unemployment Rate by LSOA in Gloucestershire, December 2014



PART 5: MAP SHOWING DISTRIBUTION OF CLAIMANT RATE ACROSS GLOUCESTERSHIRE



PART 6: YOUTH UNEMPLOYMENT(18-24 year olds)

Youth Claimant Rate and Claimant Count

The claimant rate for young people is higher than for the working age (16-64) population with 2.1% of 18-24 year olds in Gloucestershire claiming Job Seekers Allowance (1.2% for working age).

Figure 22: Youth Claimant Rate for Gloucestershire, the South West and UK over the past year

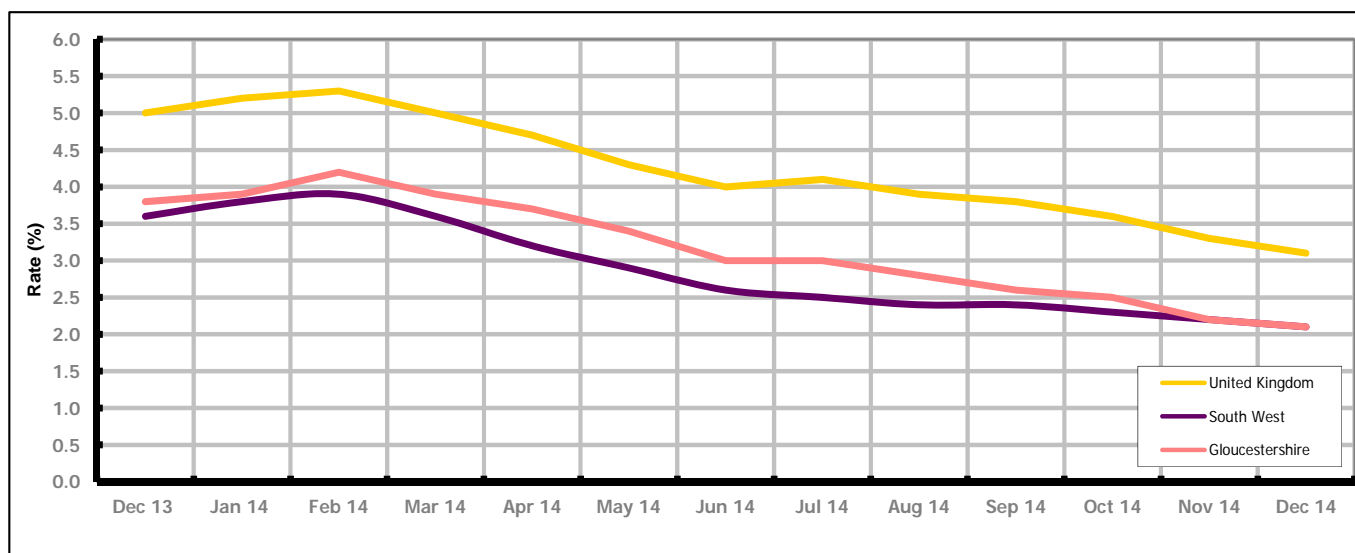


Figure 22 shows Gloucestershire's 18-24 claimant rate is the same as the South West average of 2.1%, but 1.0% lower than the UK average of 3.1%

Figure 23: Claimant Count for Gloucestershire over the past year

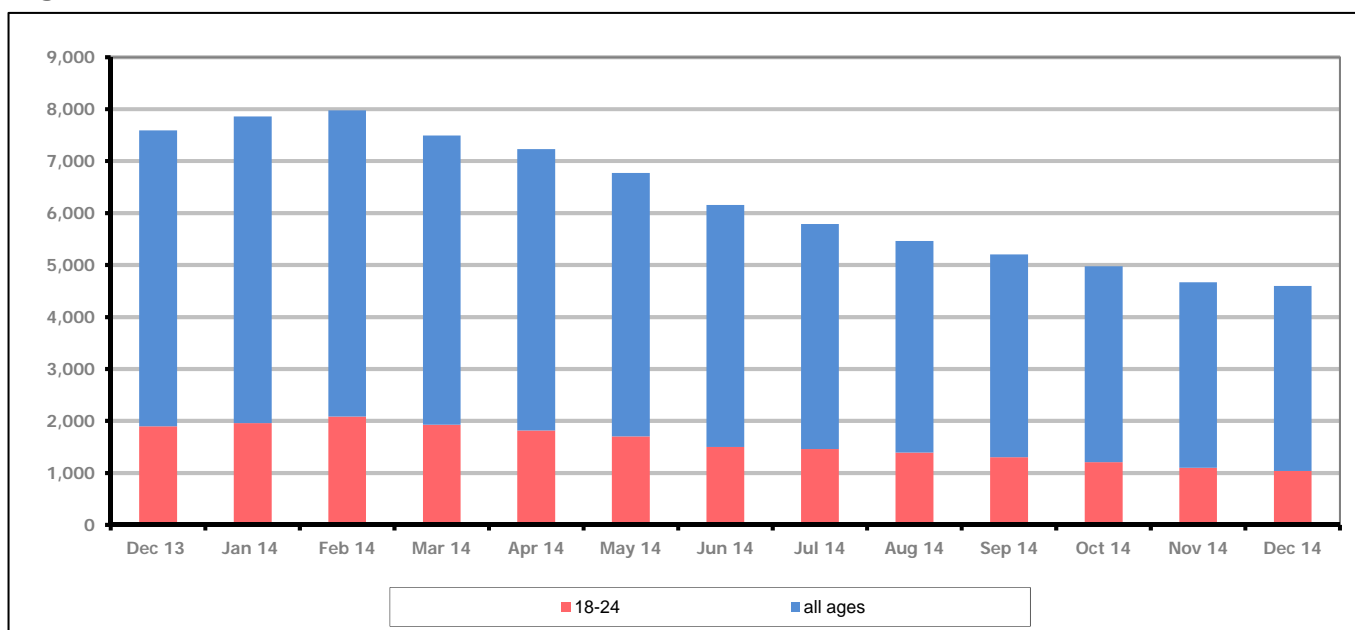


Figure 23 shows that in December 2014, 1,040 people aged 18-24 were claiming Job Seekers Allowance in Gloucestershire, this represents 22.6% of total working age claimants.

PART 6: YOUTH UNEMPLOYMENT

Youth Claimant Rate and Claimant Count

Figure 24: Youth Claimant Rate for Gloucestershire, the South West and UK over the past year

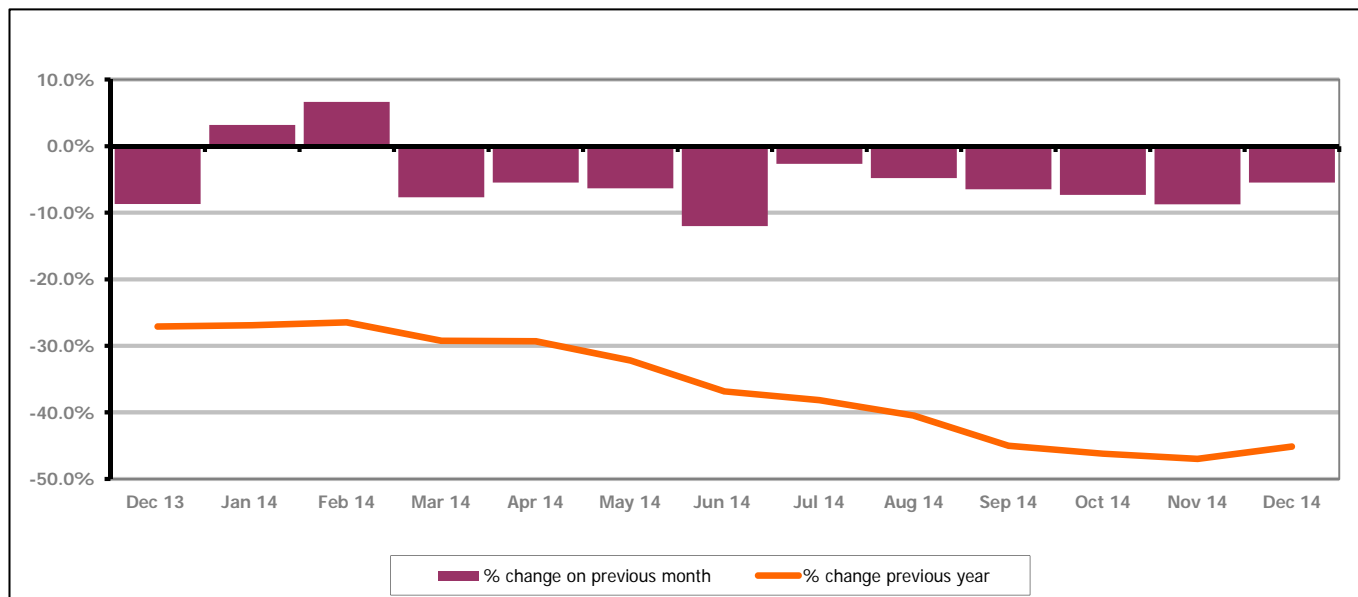


Figure 24 shows the number of young claimants decreased in December 2014 by 5.5% this represented 60 people. Over the last year the number of young claimants fell by 45.1% or 855 people.

Youth unemployment and duration of claim

Figure 25: Duration of claim in the 18-24 year age group

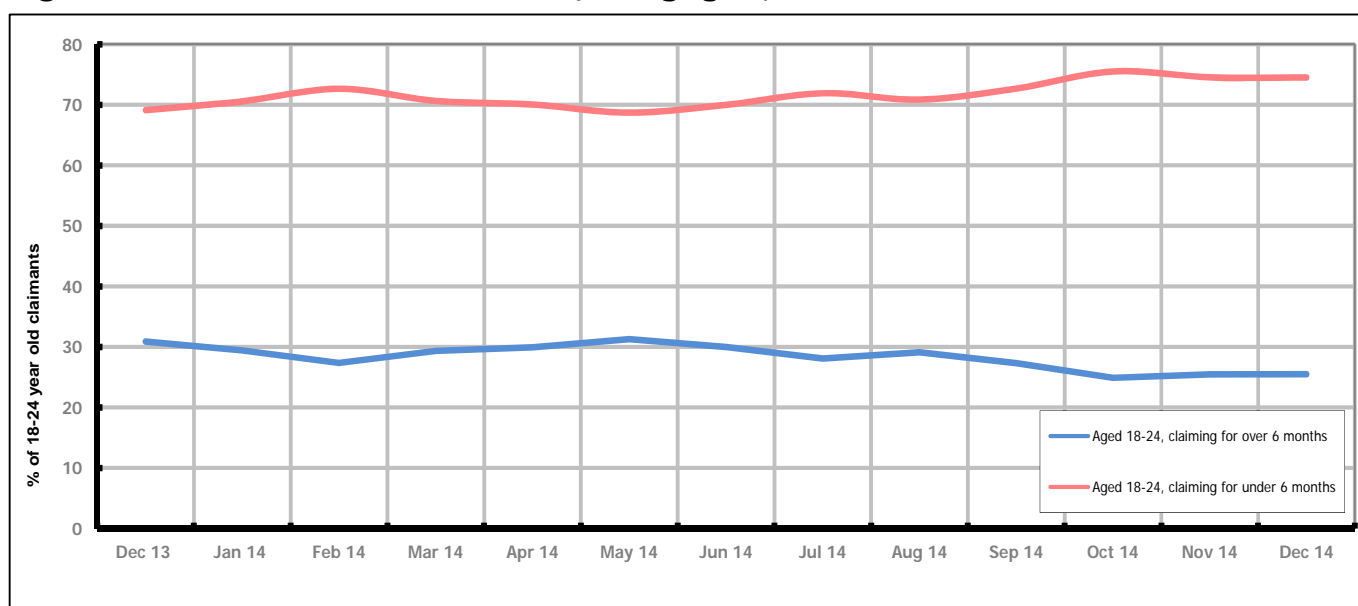


Figure 25 shows the proportion of 18-24 year olds claiming for less than six months remained the same as last month at 74.5%. During the same period those claiming for more then six months remained the same at 25.5%.

PART 7: YOUNG PEOPLE NOT IN EDUCATION, EMPLOYMENT OR TRAINING (NEET) IN GLOUCESTERSHIRE

Data provided by Gloucestershire Youth Support Team on the situation of young people (16-18) in Gloucestershire who are not in education, employment or formal training.

Gloucestershire Youth Support Team is required to report performance with the 16-18 age range against nationally defined criteria for counting the NEET group. The NEET group includes young people actively seeking education, employment or training as well as those young people who are either not yet ready or who are unable to access these opportunities because of their personal circumstances. The figures quoted below include young people in both of these categories.

Summary

At the end of December 2014 there were 564 young people aged 16-18 not in education, employment or training in Gloucestershire and this figure translates into an adjusted (*) 16-18 NEET population of 3.72%. The total number of NEET decreased by 39 young people in December 2014 compared to November 2014. One district had an increase in their NEET figures and five districts saw a decrease.

Total NEET Group by District Area

December 2014 NEET data

	Cheltenham	Cotswold	Forest	Gloucester	Stroud	Tewkesbury	Total
Total NEET	109	62	80	171	75	67	564
Cohort	2738	2230	2187	4792	3111	1850	16908
% NEET	3.98	2.78	3.66	3.57	2.41	3.62	3.72

If you would like to receive any further information on Gloucestershire's NEET strategy then please contact Ruth.Critchlow@gloucestershire.gov.uk or telephone 01452 426900.

(*) Adjustment includes a proportion of young people aged 16-18 whose outcomes are not-known to Gloucestershire Youth Support Team.