

Unemployment Bulletin

Issue 82 May 2015

Contents

Part 1: Summary

A summary of unemployment data at district, County, regional and national level 1

Part 2: County

Unemployment figures for the County compared to the South West and the rest of the UK 3

Part 3: Districts

A comparative break down of unemployment figures by district 4

Part 4: Wards

Further breakdown of unemployment figures by ward:

Cheltenham	6
Cotswolds	8
Forest of Dean	10
Gloucester	12
Stroud	14
Tewkesbury	16

Part 5: Map

Distribution of claimant rate across Gloucestershire 18

Part 6: Youth Unemployment

Unemployment data for the 18-24 year old age group 20

Part 7: Young People

Data about Young People Not in Education, Employment or Training (NEET) 22

Please note Universal Credit which will replace the means tested element of Jobseekers Allowance (JSA) is being rolled out across the country, it has recently been introduced in Cotswold and the Forest of Dean.

Data about Universal Credit claimants is currently very limited, so is not included in the unemployment bulletin

INTRODUCTION

The Unemployment Bulletin provides a monthly update on unemployment data for Gloucestershire, the South West region and the United Kingdom. It is produced by the Strategic Needs Analysis Team in the County Council's Strategy and Challenge function. The data is sourced from the Office for National Statistics via Nomis (www.nomis.co.uk).

The claimant count measures the number of people claiming unemployment-related benefit (currently Job Seeker's allowance). The claimant rate is the number of claimants as a proportion of the working age population.

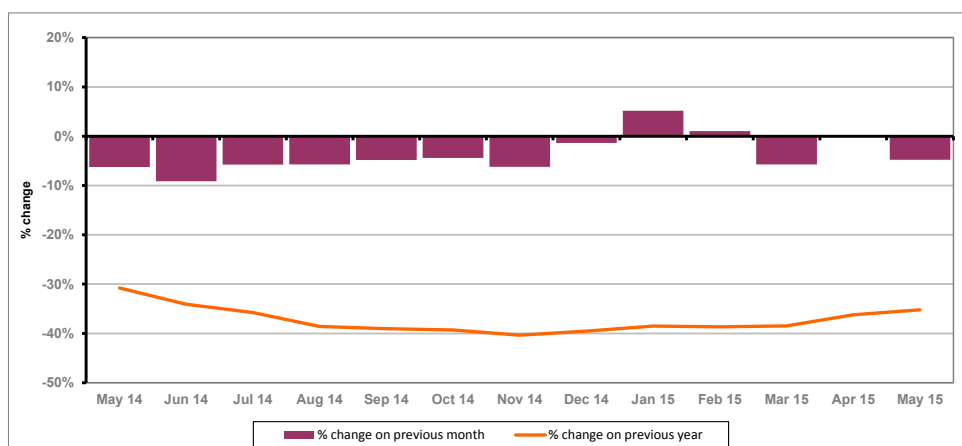
PART 1: SUMMARY

The claimant rate in Gloucestershire was 1.2% in May 2015. This was the same as the April 2015 figure. The UK rate remained the same as April 2015 at 1.9%, whilst the South West rate decreased to 1.1%. Gloucestershire's rate was 0.1% higher than the South West average of 1.1%, and 0.7% lower than the UK average of 1.9%.

The claimant count in Gloucestershire in May 2015 decreased by 220 people. The amount of people claiming in May 2015 was 4.8% lower than the number in April 2015. This compares to a 5.4% decrease in the South West and a 4.3% decrease for the UK.

The year on year claimant count in Gloucestershire has increased since last month. The count was 35.2% lower in May 2015 than at the same point in the previous year as shown in the graph below.

Gloucestershire claimants - Month on Month and Year on Year change: May 2014 to May 2015



Source: ONS Crown Copyright Reserved

Produced by:

Strategic Needs Analysis Team
Strategy and Challenge
Gloucestershire County Council
June 2015

DISTRICTS AT A GLANCE

At a glance unemployment information grouped by district. Includes:

Claim count: Total number of people claiming Job Seekers Allowance in May 2015

Compared to last month: How much larger/smaller May's claimant count is compared to April, expressed as a %

Claimant rate: The % of working population claiming Job Seekers Allowance in May 2015

Highest claiming ward: The ward with the highest claim count in that district and the rate

CHELTENHAM BOROUGH

Claim count:	933
Compared to last month:	-1.3%
Claimant rate:	1.2%
Highest claiming ward	St Mark's (2.7%)

GLOUCESTER CITY

Claim count:	1,473
Compared to last month:	-6.4%
Claimant rate:	1.8%
Highest claiming ward	Westgate (4.3%)

COTSWOLD DISTRICT

Claim count:	346
Compared to last month:	-1.7%
Claimant rate:	0.7%
Highest claiming ward	Cirencester Watermoor (1.7%)

STROUD DISTRICT

Claim count:	538
Compared to last month:	-5.9%
Claimant rate:	0.8%
Highest claiming ward	Central (2.3%)

FOREST OF DEAN

Claim count:	582
Compared to last month:	-7.2%
Claimant rate:	1.1%
Highest claiming ward	Cinderford West (2.7%)

TEWKESBURY BOROUGH

Claim count:	528
Compared to last month:	-4.2%
Claimant rate:	1.0%
Highest claiming ward	Tewkesbury Prior's Park (3.2%)

YOUNG PEOPLE NOT IN EDUCATION, EMPLOYMENT OR TRAINING (NEET)

At the end of May 2015 there were 476 young people aged 16-18 not in education, employment or training in Gloucestershire and this figure translates into an adjusted (*) 16-18 NEET population of 3.72%.

PART 2: UK, SW AND GLOUCESTERSHIRE INDICATORS

The unemployment situation in Gloucestershire compared to the South West and the UK.

Claimant Rate

Figure 1: Claimant Rate for Gloucestershire, the South West and UK over the past year

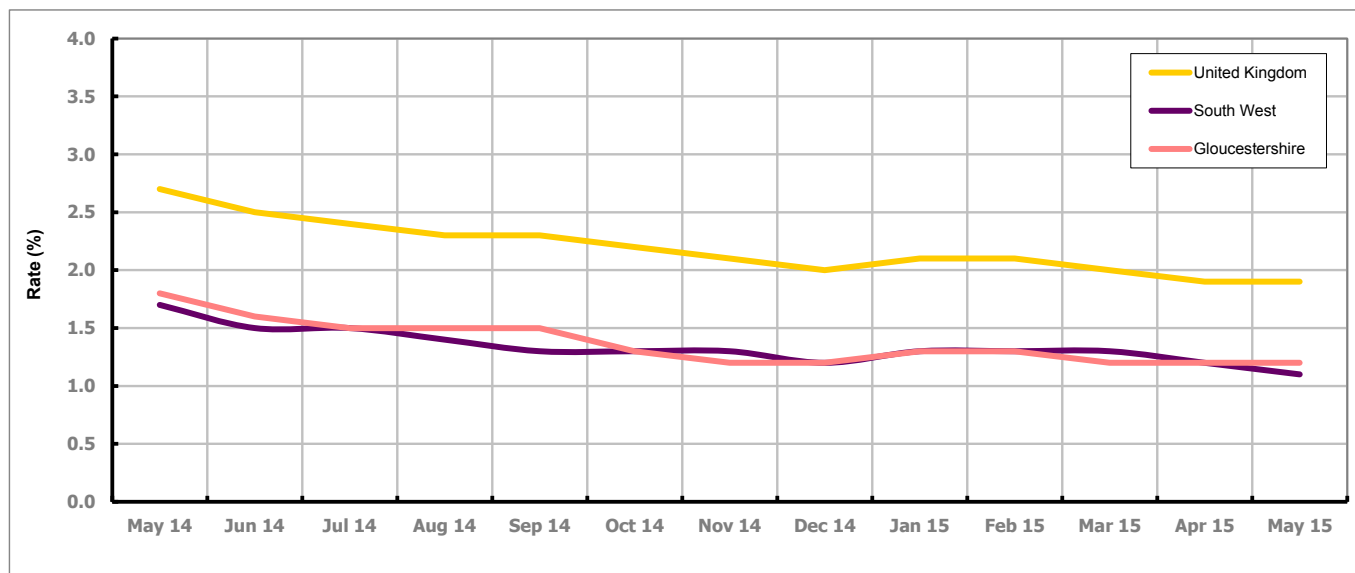


Figure 1 shows the claimant rate for Gloucestershire at 1.2% in May 2015. Between May and September 2014 the Gloucestershire rate was generally higher than the South West. It has been the same as the South West average since December 2014, with the exception of November and March when it was lower and May when it was higher. It has been persistently lower by approximately 0.7% against the UK average. The rate has remained the same since March 2015.

Claimant Count

Table 1: Analysis of UK, South West and Gloucestershire Claimant Counts

Area	Claimant Count in May 2015	% change on April 2015	Average % change over the last six months	Consecutive months decreasing
UK	761,962	-4.3%	-1.3%	2
South West	37,230	-5.4%	-1.5%	2
Gloucestershire	4,400	-4.8%	-0.8%	2

Table 1 shows that in May 2015, the number of claimants in Gloucestershire was 4.8% lower than the number in April 2015.

The average change in claimants in Gloucestershire for the six months to May 2015 was -0.8%.

PART 3: LOCAL AUTHORITY DISTRICT ANALYSIS

Claimant Rate and Claimant Count

Figure 2: Claimant Rate (%) across Gloucestershire - May 2015

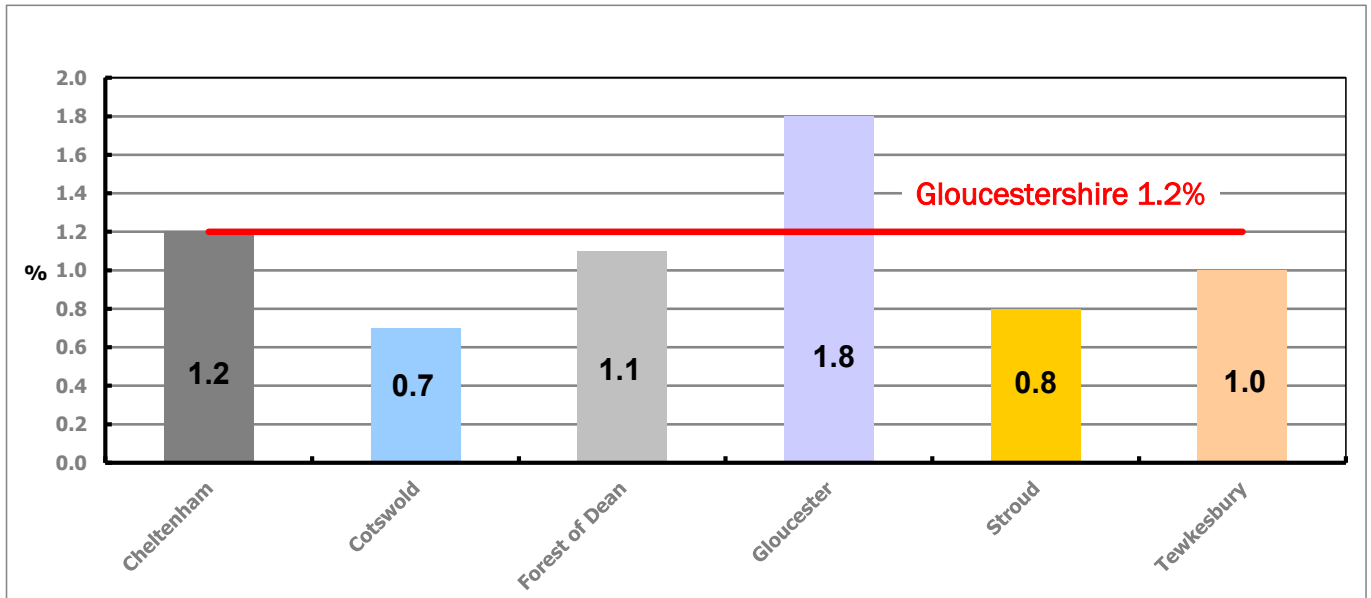


Figure 2 shows the claimant rate for May 2015 in Gloucestershire. Between April 2015 and May 2015, the rate in Cheltenham, the Forest of Dean, Gloucester and Tewkesbury declined, while the rate in the remaining two districts stayed the same.

Figure 3: Total claimants over the past year across Gloucestershire Districts

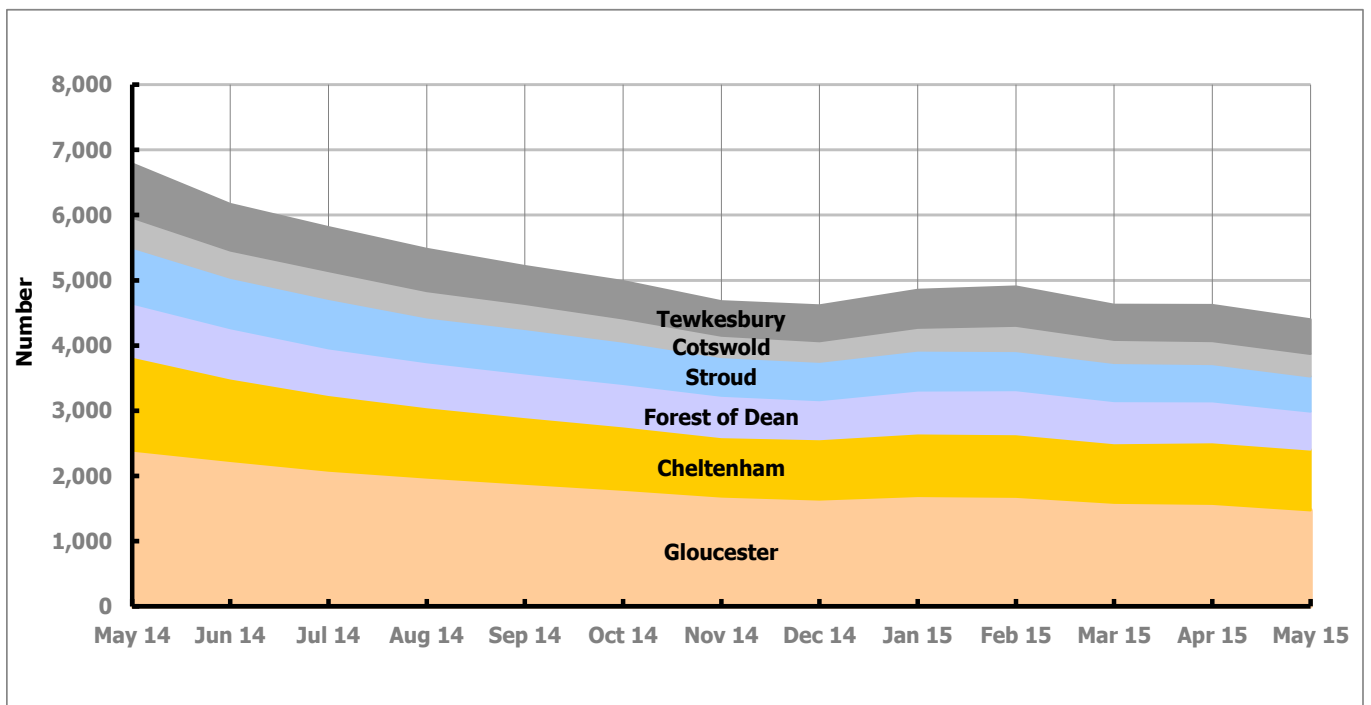


Figure 3 shows the overall claimant count by district over the past year. The number of claimants has decreased over the last year, with the exception of January, February and April 2015 when there was an increase.

Table 2: Analysis of Gloucestershire and District Claimant Counts

Total	May 15 Number	May 15 Rate	Apr 15 Number	Apr 15 Rate	Monthly change	% monthly change	Monthly change of rate
Gloucestershire	4,400	1.2	4,620	1.2	-220	-4.8%	0.0
Cheltenham	933	1.2	945	1.3	-12	-1.3%	-0.1
Cotswold	346	0.7	352	0.7	-6	-1.7%	0.0
Forest of Dean	582	1.1	627	1.2	-45	-7.2%	-0.1
Gloucester	1,473	1.8	1,573	2.0	-100	-6.4%	-0.2
Stroud	538	0.8	572	0.8	-34	-5.9%	0.0
Tewkesbury	528	1.0	551	1.1	-23	-4.2%	-0.1

Table 2 shows the change in the claimant count in May 2015 compared to April 2015. All districts saw a decline in the number of claimants.

Table 3: Analysis of Male Gloucestershire and District Claimant Counts

Male	May 15 Number	May 15 Rate	Apr 15 Number	Apr 15 Rate	Monthly change	% monthly change	Monthly change of rate
Gloucestershire	2,916	1.6	3,036	1.6	-120	-4.0%	0.0
Cheltenham	624	1.6	629	1.7	-5	-0.8%	-0.1
Cotswold	232	0.9	237	1.0	-5	-2.1%	-0.1
Forest of Dean	375	1.5	401	1.6	-26	-6.5%	-0.1
Gloucester	985	2.5	1,044	2.6	-59	-5.7%	-0.1
Stroud	352	1.0	367	1.1	-15	-4.1%	-0.1
Tewkesbury	348	1.4	358	1.4	-10	-2.8%	0.0

Table 3 shows the change in the male claimant count in May 2015 compared to April 2015. All districts saw a decline in the number of male claimants.

Table 4: Analysis of Female Gloucestershire and District Claimant Counts

Female	May 15 Number	May 15 Rate	Apr 15 Number	Apr 15 Rate	Monthly change	% monthly change	Monthly change of rate
Gloucestershire	1,484	0.8	1,584	0.8	-100	-6.3%	0.0
Cheltenham	309	0.8	316	0.8	-7	-2.2%	0.0
Cotswold	114	0.4	115	0.4	-1	-0.9%	0.0
Forest of Dean	207	0.8	226	0.9	-19	-8.4%	-0.1
Gloucester	488	1.2	529	1.3	-41	-7.8%	-0.1
Stroud	186	0.5	205	0.6	-19	-9.3%	-0.1
Tewkesbury	180	0.7	193	0.7	-13	-6.7%	0.0

Table 4 shows the change in the female claimant count in May 2015 compared to April 2015. All districts saw a decline in the number of female claimants.

PART 4: LOCAL AUTHORITY DISTRICT AND WARD ANALYSIS

This section covers the six districts and a comparison of their constituent wards.

4.1 Cheltenham Borough

Claimant Rate and Claimant Count

Figure 4: Cheltenham Borough claimant rate over the last year

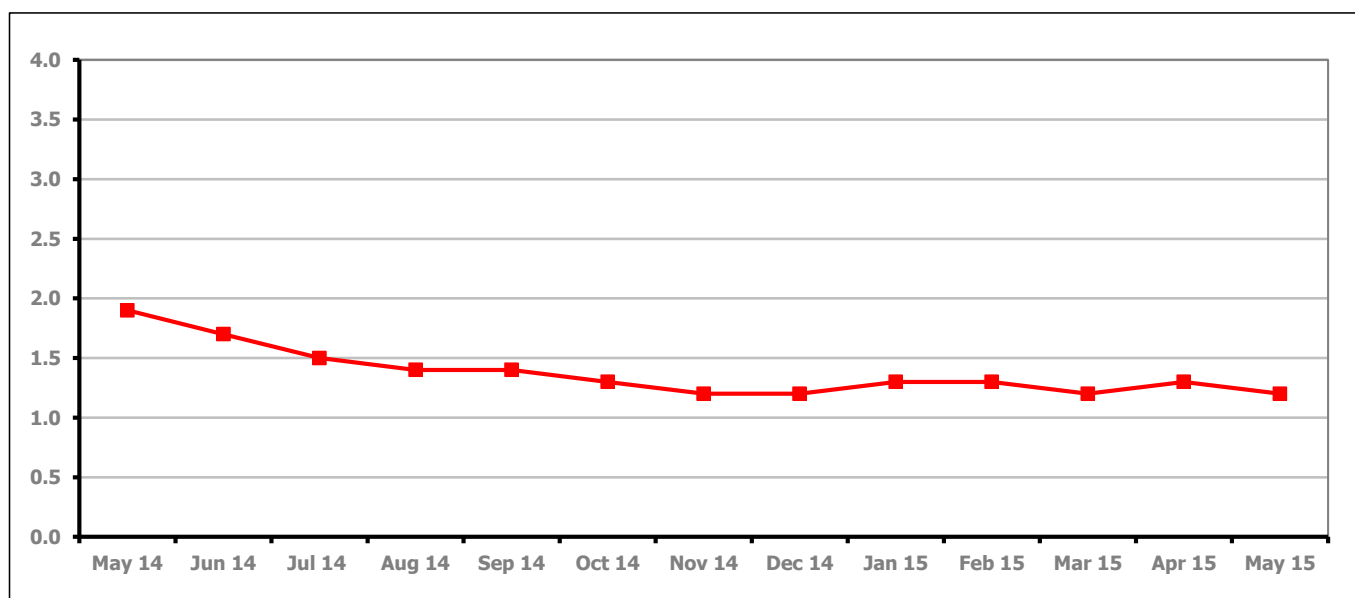


Figure 4 shows the claimant rate in Cheltenham decreased in May 2015 to 1.2%.

Figure 5: Cheltenham Borough claimants - Month on Month and Year on Year change

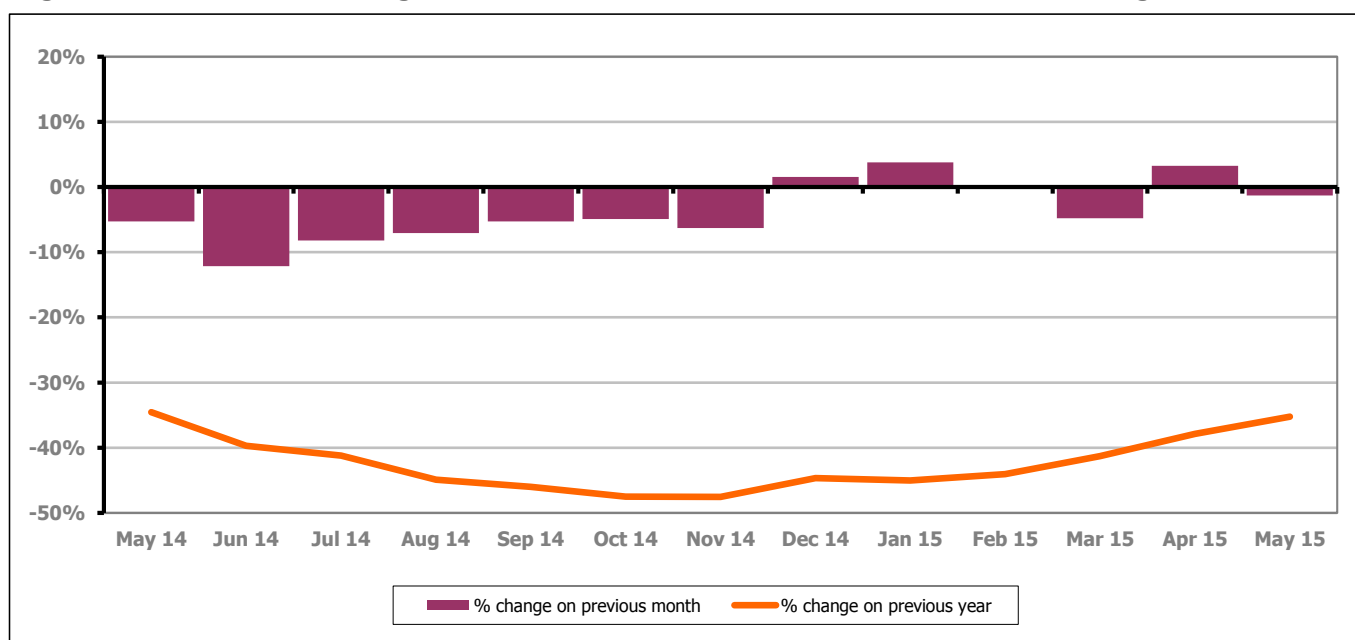


Figure 5 shows the claimant count decreased by 1.3% since last month. The change on the previous year has increased between April and May 2015 to -35.3%.

PART 4: LOCAL AUTHORITY DISTRICT AND WARD ANALYSIS

4.1 Cheltenham Borough continued...

Figure 6: Claimant rates across Cheltenham Borough wards - May 2015

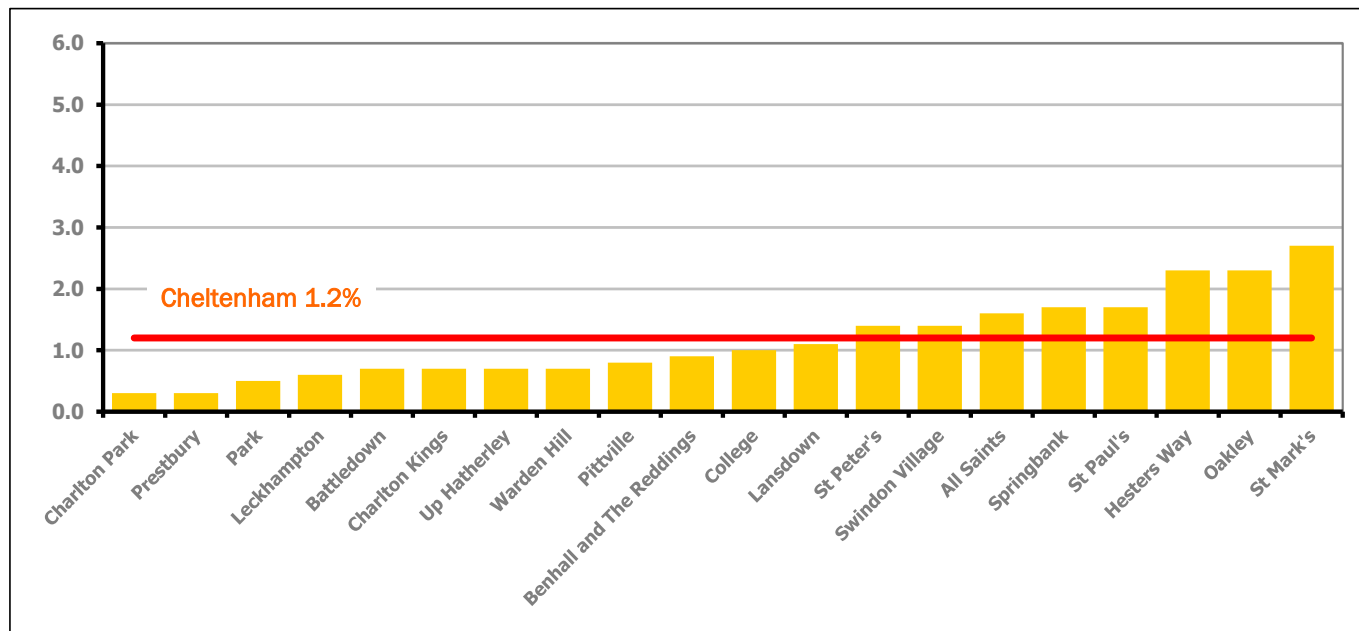


Figure 6 shows the claimant rates for Cheltenham Borough wards. The red line represents the average claimant rate across the Borough of 1.2%. Eight wards lie above the average.

Table 5: Analysis of Claimant Count at Cheltenham Borough ward level - May 2015

District	Ward	Rate	Rank*	
Cheltenham	Charlton Park	0.3	5	<div style="display: flex; align-items: center;"> <div style="width: 20px; height: 20px; background-color: #00ff00; margin-right: 5px;"></div> bottom 10% of county </div>
Cheltenham	Prestbury	0.3	5	
Cheltenham	Park	0.5	31	
Cheltenham	Leckhampton	0.6	40	
Cheltenham	Battledown	0.7	52	
Cheltenham	Charlton Kings	0.7	52	
Cheltenham	Up Hatherley	0.7	52	<div style="display: flex; align-items: center;"> <div style="width: 20px; height: 20px; background-color: #ffff00; margin-right: 5px;"></div> first quartile of county </div>
Cheltenham	Warden Hill	0.7	52	
Cheltenham	Pittville	0.8	70	
Cheltenham	Benhall and The Reddings	0.9	81	<div style="display: flex; align-items: center;"> <div style="width: 20px; height: 20px; background-color: #ffcc00; margin-right: 5px;"></div> second quartile of county </div>
Cheltenham	College	1.0	88	
Cheltenham	Lansdown	1.1	99	
Cheltenham	St Peter's	1.4	112	<div style="display: flex; align-items: center;"> <div style="width: 20px; height: 20px; background-color: #ff9900; margin-right: 5px;"></div> third quartile of county </div>
Cheltenham	Swindon Village	1.4	112	
Cheltenham	All Saints	1.6	121	
Cheltenham	Springbank	1.7	124	<div style="display: flex; align-items: center;"> <div style="width: 20px; height: 20px; background-color: #ff6600; margin-right: 5px;"></div> fourth quartile of county </div>
Cheltenham	St Paul's	1.7	124	
Cheltenham	Hesters Way	2.3	131	
Cheltenham	Oakley	2.3	131	<div style="display: flex; align-items: center;"> <div style="width: 20px; height: 20px; background-color: #ff0000; margin-right: 5px;"></div> highest 10% of county </div>
Cheltenham	St Mark's	2.7	136	

* 1 = "best" and 142 = "worst"

Table 5 shows overall claimant rates for Cheltenham Borough wards and their position relative to all wards in Gloucestershire.

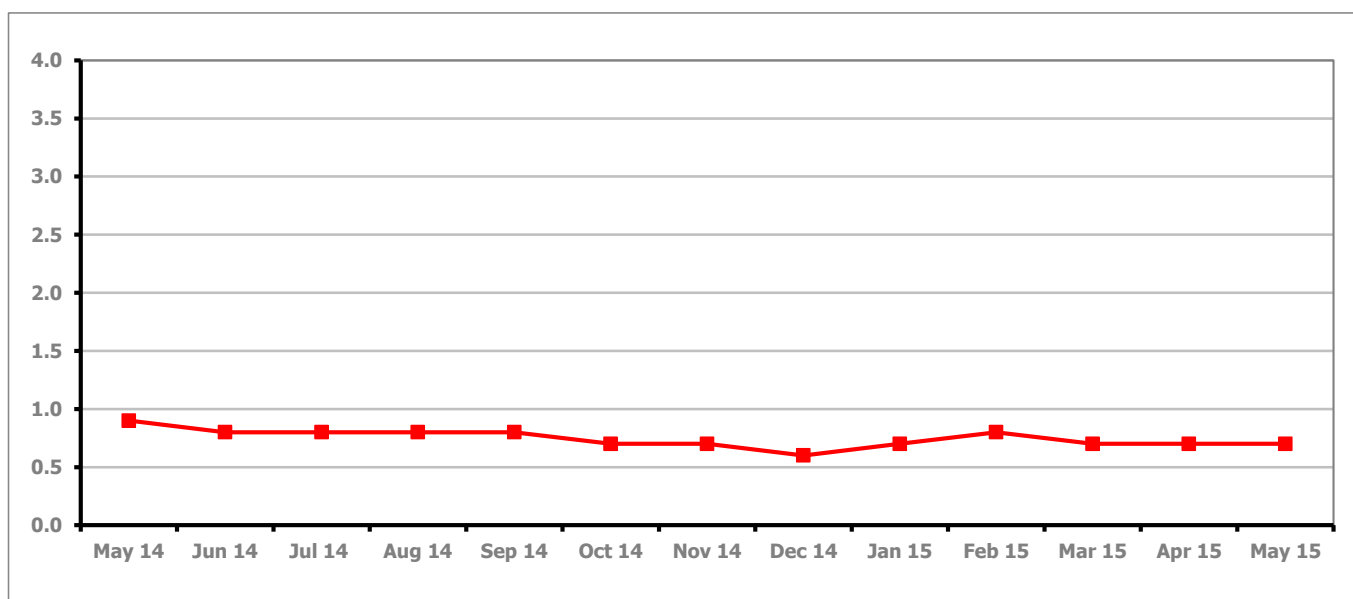
PART 4: LOCAL AUTHORITY DISTRICT AND WARD ANALYSIS**4.2 Cotswold District****Claimant Rate and Claimant Count***Figure 7: Cotswold District claimant rate over the last year*

Figure 7 shows the claimant rate in Cotswold District remained the same as last month at 0.7%.

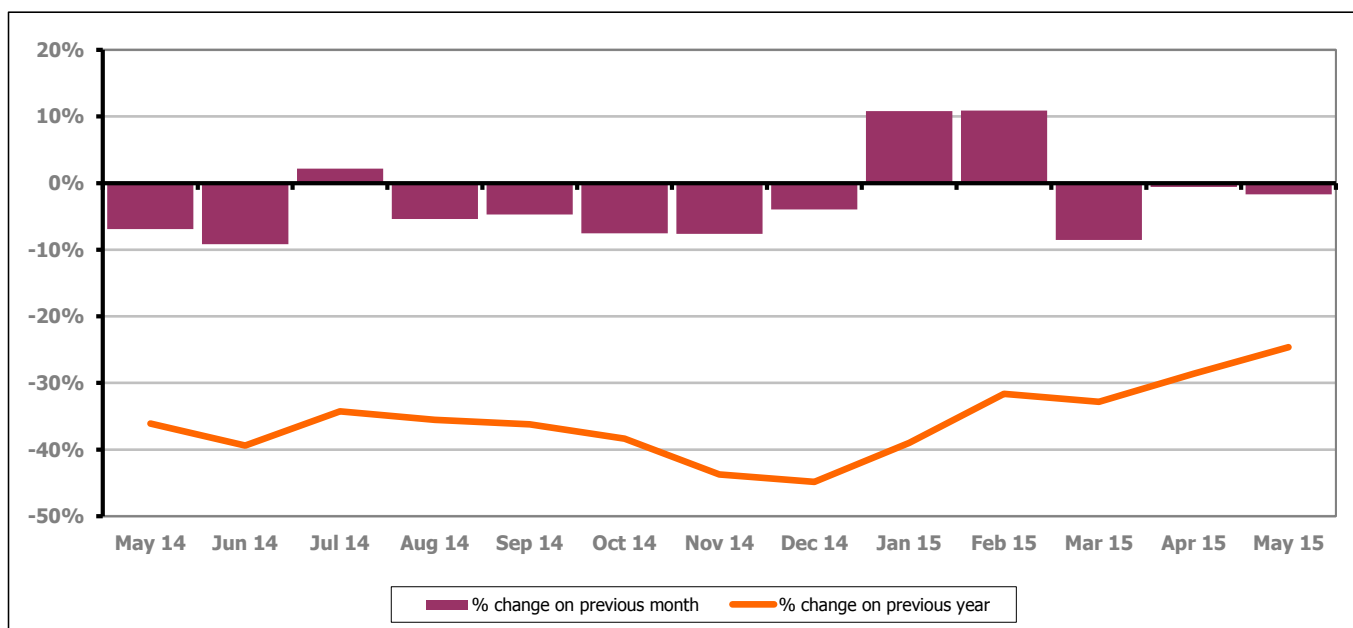
Figure 8: Cotswold District claimants - Month on Month and Year on Year change

Figure 8 shows the claimant count decreased by 1.7% since April 2015. The change on the previous year has increased between April and May 2015 to -24.6%.

PART 4: LOCAL AUTHORITY DISTRICT AND WARD ANALYSIS

4.2 Cotswold District continued...

Figure 9: Claimant rates across Cotswold District wards - May 2015

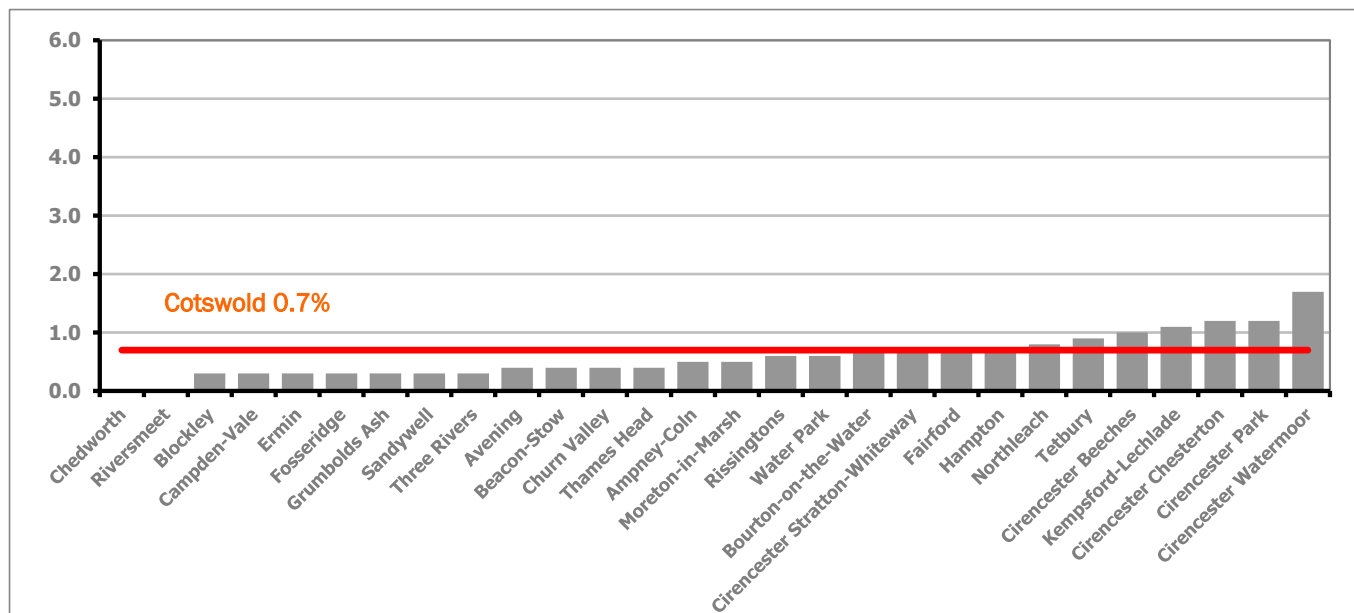
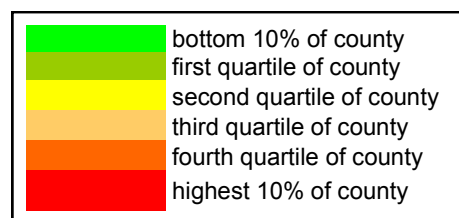


Figure 9 shows the claimant rates for Cotswold District wards. The red line represents the average claimant rate across the District of 0.7%. Seven wards lie above the average.

Table 6: Analysis of Claimant Count at Cotswold District ward level - May 2015

District	Ward	Rate	Rank*
Cotswolds	Chedworth	<0.3	1
Cotswolds	Riversmeet	<0.3	1
Cotswolds	Blockley	0.3	5
Cotswolds	Campden-Vale	0.3	5
Cotswolds	Ermin	0.3	5
Cotswolds	Fosseridge	0.3	5
Cotswolds	Grumbolds Ash	0.3	5
Cotswolds	Sandywell	0.3	5
Cotswolds	Three Rivers	0.3	5
Cotswolds	Avening	0.4	23
Cotswolds	Beacon-Stow	0.4	23
Cotswolds	Churn Valley	0.4	23
Cotswolds	Thames Head	0.4	23
Cotswolds	Ampney-Coln	0.5	31
Cotswolds	Moreton-in-Marsh	0.5	31
Cotswolds	Risingtons	0.6	40
Cotswolds	Water Park	0.6	40
Cotswolds	Bourton-on-the-Water	0.7	52
Cotswolds	Cirencester Stratton-Whiteway	0.7	52
Cotswolds	Fairford	0.7	52
Cotswolds	Hampton	0.7	52
Cotswolds	Northleach	0.8	70
Cotswolds	Tetbury	0.9	81
Cotswolds	Cirencester Beeches	1.0	88
Cotswolds	Kempsford-Lechlade	1.1	99
Cotswolds	Cirencester Chesterton	1.2	104
Cotswolds	Cirencester Park	1.2	104
Cotswolds	Cirencester Watermoor	1.7	124



* 1 = "best" and 142 = "worst"

Table 6 shows overall claimant rates for Cotswold District wards and their position relative to all wards in Gloucestershire.

PART 4: LOCAL AUTHORITY DISTRICT AND WARD ANALYSIS

4.3 Forest of Dean District

Claimant Rate and Claimant Count

Figure 10: Forest of Dean District claimant rate over the last year

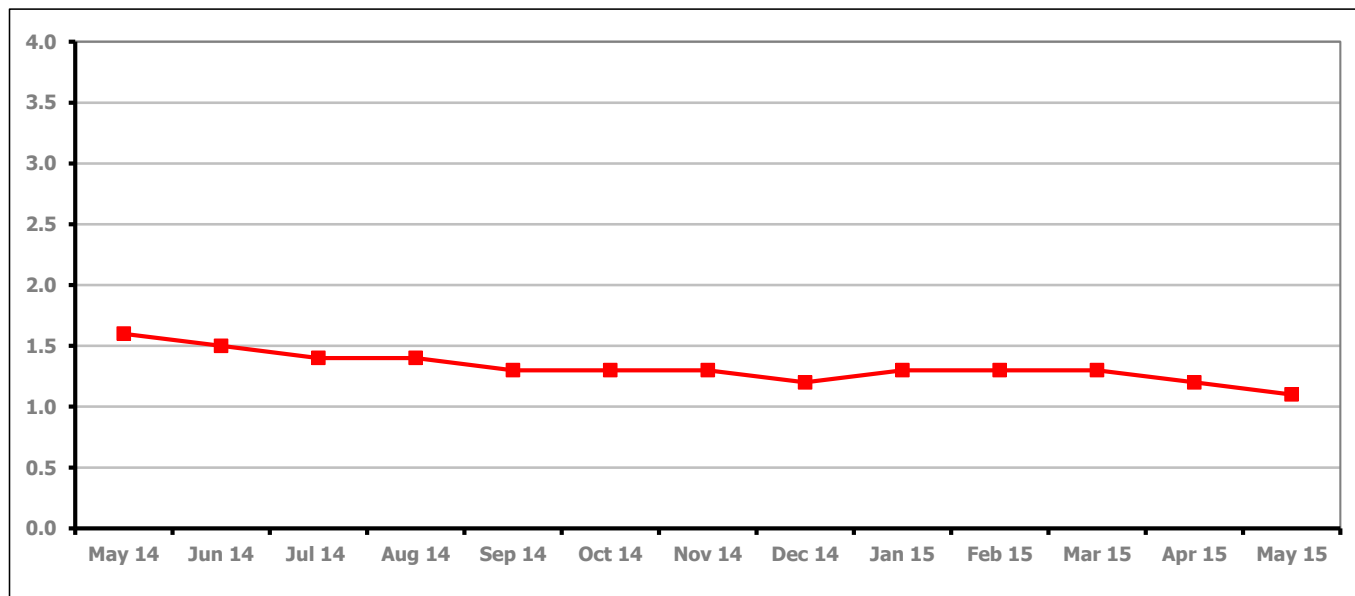


Figure 10 shows the claimant rate in the Forest of Dean declined in May 2015 to 1.1%.

Figure 11: Forest of Dean District claimants - Month on Month and Year on Year change

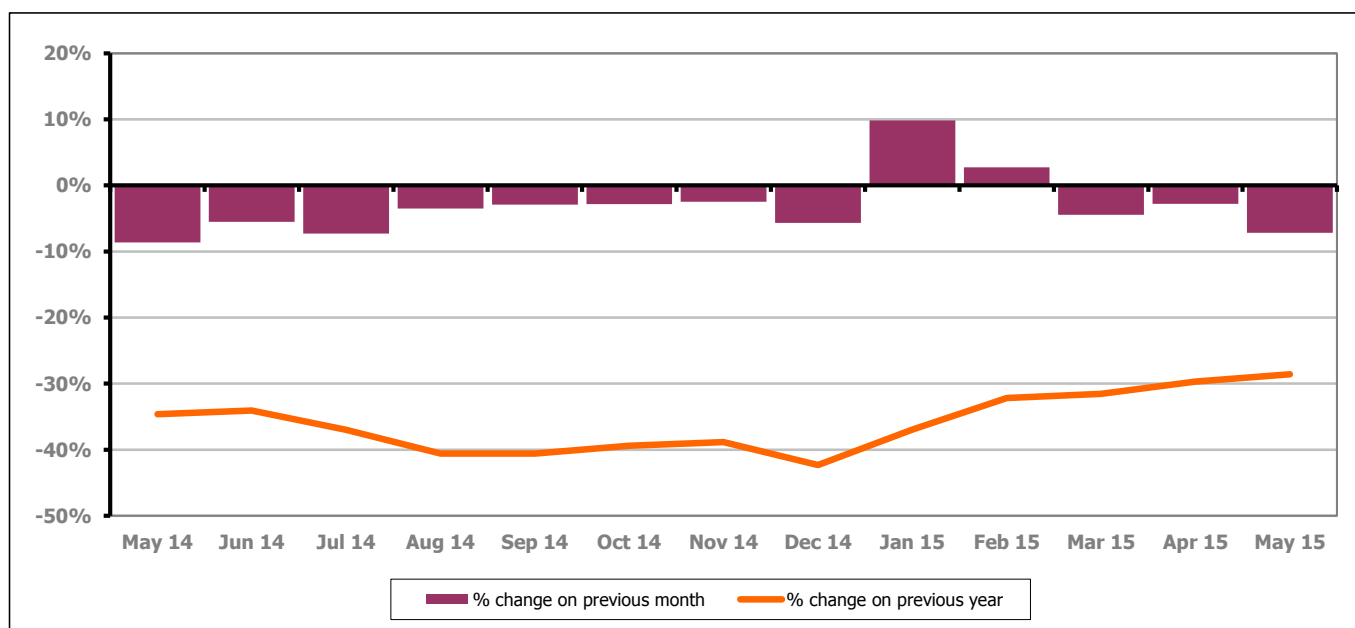


Figure 11 shows the claimant count decreased by 7.2% since April 2015. The change on the previous year has increased between April and May 2015 to -28.6%.

PART 4: LOCAL AUTHORITY DISTRICT AND WARD ANALYSIS

4.3 Forest of Dean District continued...

Figure 12: Claimant rates across Forest of Dean District wards - May 2015

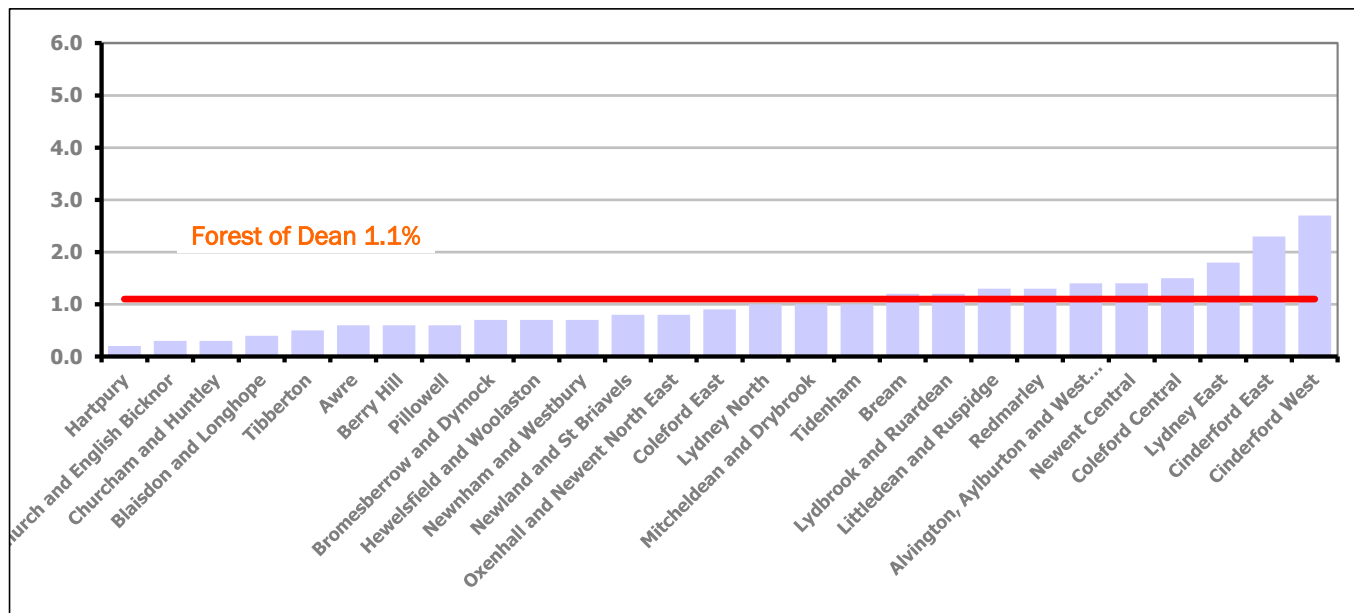
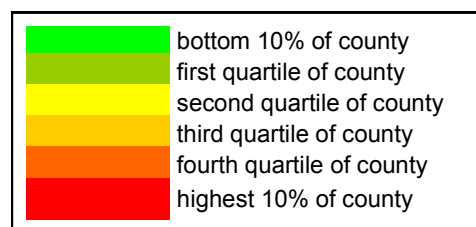


Figure 12 shows the claimant rates for Forest of Dean District wards. The red line represents the average claimant rate across the District of 1.1%. Ten wards lie above the average.

Table 7: Analysis of Claimant Count at Forest of Dean District ward level - May 2015

District	Ward	Rate	Rank*
Forest	Hartpur	0.2	4
Forest	Christchurch and English Bicknor	0.3	5
Forest	Churcham and Huntley	0.3	5
Forest	Blaisdon and Longhope	0.4	23
Forest	Tibberton	0.5	31
Forest	Awre	0.6	40
Forest	Berry Hill	0.6	40
Forest	Pillowell	0.6	40
Forest	Bromesberrow and Dymock	0.7	52
Forest	Hewelsfield and Woolaston	0.7	52
Forest	Newnham and Westbury	0.7	52
Forest	Newland and St Briavels	0.8	70
Forest	Oxenhall and Newent North East	0.8	70
Forest	Coleford East	0.9	81
Forest	Lydney North	1.0	88
Forest	Mitcheldean and Drybrook	1.0	88
Forest	Tidenham	1.0	88
Forest	Bream	1.2	104
Forest	Lydbrook and Ruardean	1.2	104
Forest	Littledean and Ruspidge	1.3	109
Forest	Redmarley	1.3	109
Forest	Alvington, Aylburton and West Lydney	1.4	112
Forest	Newent Central	1.4	112
Forest	Coleford Central	1.5	120
Forest	Lydney East	1.8	128
Forest	Cinderford East	2.3	131
Forest	Cinderford West	2.7	136



* 1 = "best" and 142 = "worst"

Table 7 shows overall claimant rates for the Forest of Dean District wards and their position relative to all wards in Gloucestershire.

PART 4: LOCAL AUTHORITY DISTRICT AND WARD ANALYSIS

4.4 Gloucester City

Claimant Rate and Claimant Count

Figure 13: Gloucester City claimant rate over the last year

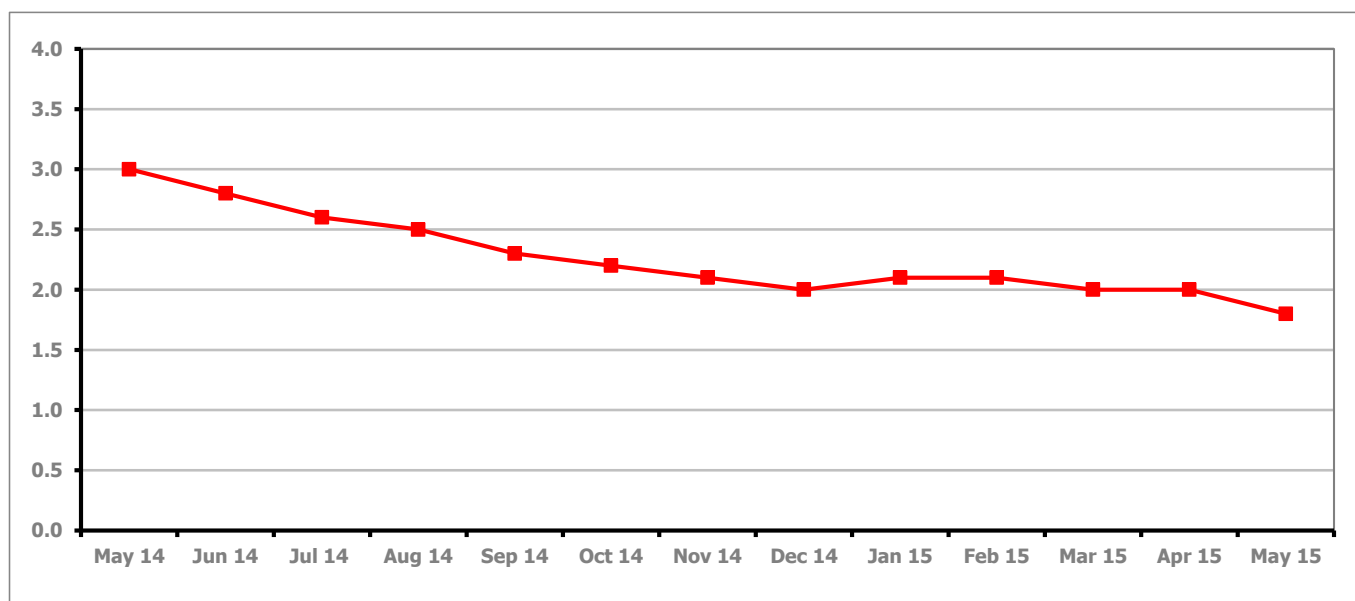


Figure 13 shows the claimant rate for Gloucester City declined in May 2015 to 1.8%.

Figure 14: Gloucester City claimants - Month on Month and Year on Year change

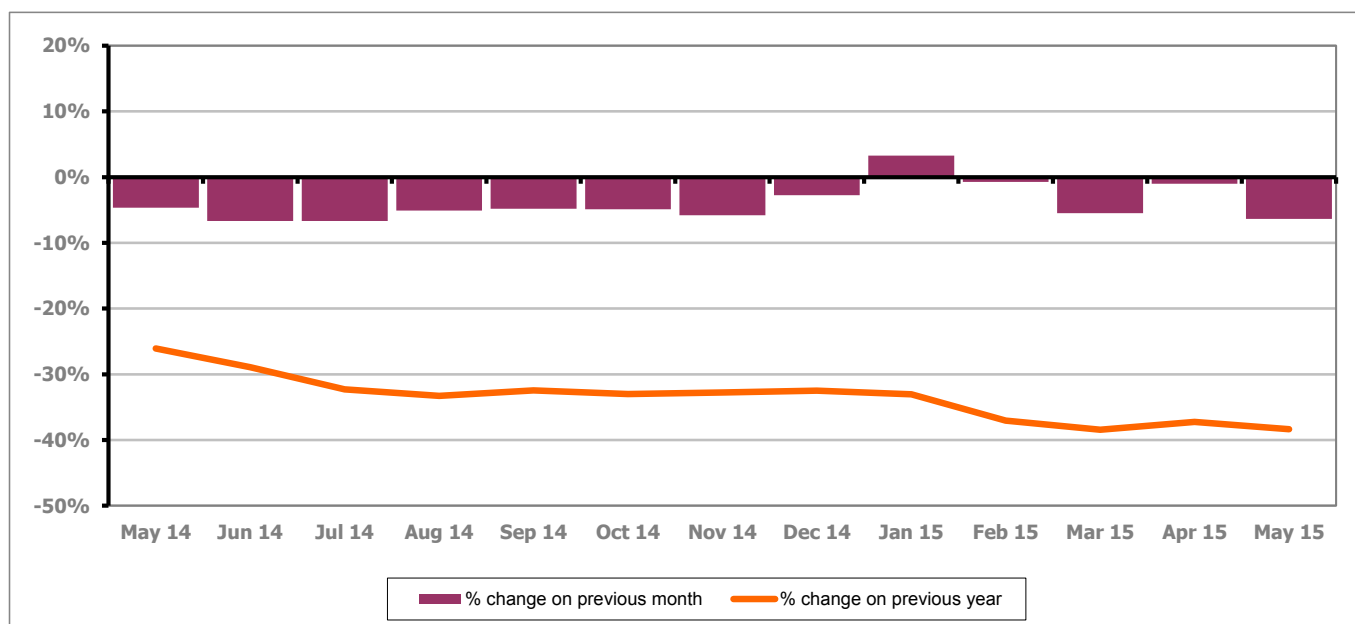


Figure 14 shows the monthly claimant count decreased by 6.4% since April 2015. The change on the previous year has decreased between April and May to -38.4%.

PART 4: LOCAL AUTHORITY DISTRICT AND WARD ANALYSIS

4.4 Gloucester City continued...

Figure 15: Claimant rates across Gloucester City wards - May 2015

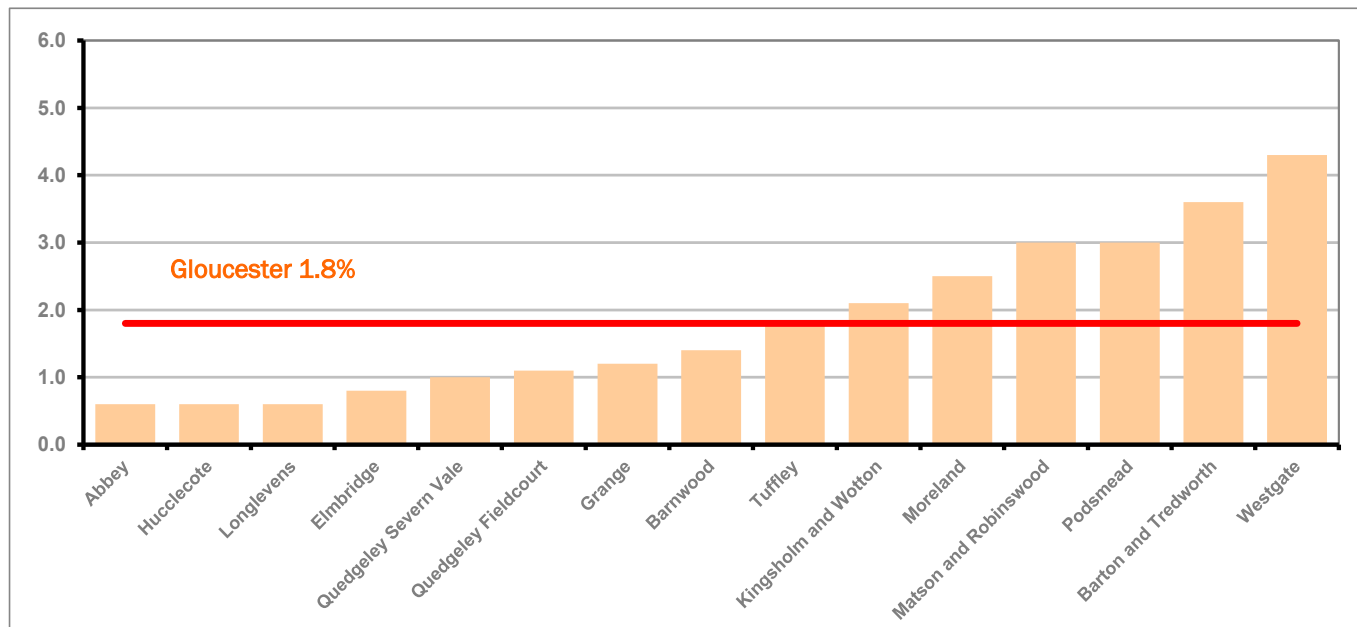


Figure 15 shows the claimant rates for Gloucester City district wards. The red line represents the average claimant rate across the City of 1.8%. Six wards lie above the average.

Table 8: Analysis of Claimant Count at Gloucester City ward level - May 2015

District	Ward	Rate	Rank*
Gloucester	Abbey	0.6	40
Gloucester	Hucclecote	0.6	40
Gloucester	Longlevens	0.6	40
Gloucester	Elmbridge	0.8	70
Gloucester	Quedgeley Severn Vale	1.0	88
Gloucester	Quedgeley Fieldcourt	1.1	99
Gloucester	Grange	1.2	104
Gloucester	Barnwood	1.4	112
Gloucester	Tuffley	1.8	128
Gloucester	Kingsholm and Wotton	2.1	130
Gloucester	Moreland	2.5	135
Gloucester	Matson and Robinswood	3.0	138
Gloucester	Podsmead	3.0	138
Gloucester	Barton and Tredworth	3.6	141
Gloucester	Westgate	4.3	142

bottom 10% of county
 first quartile of county
 second quartile of county
 third quartile of county
 fourth quartile of county
 highest 10% of county

* 1 = "best" and 142 = "worst"

Table 8 shows overall claimant rates for Gloucester City wards and their position relative to all wards in Gloucestershire.

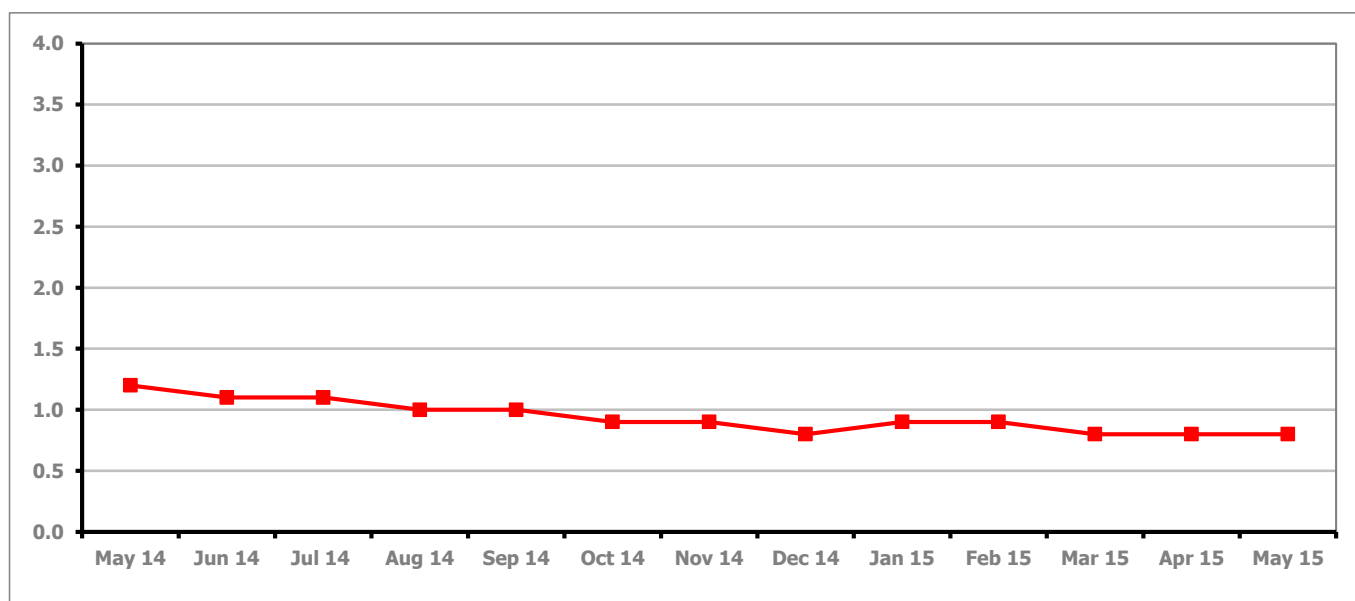
PART 4: LOCAL AUTHORITY DISTRICT AND WARD ANALYSIS**4.5 Stroud District****Claimant Rate and Claimant Count***Figure 16: Stroud District claimant rate over the last year*

Figure 16 shows the claimant rate for Stroud remained the same as last month at 0.8%.

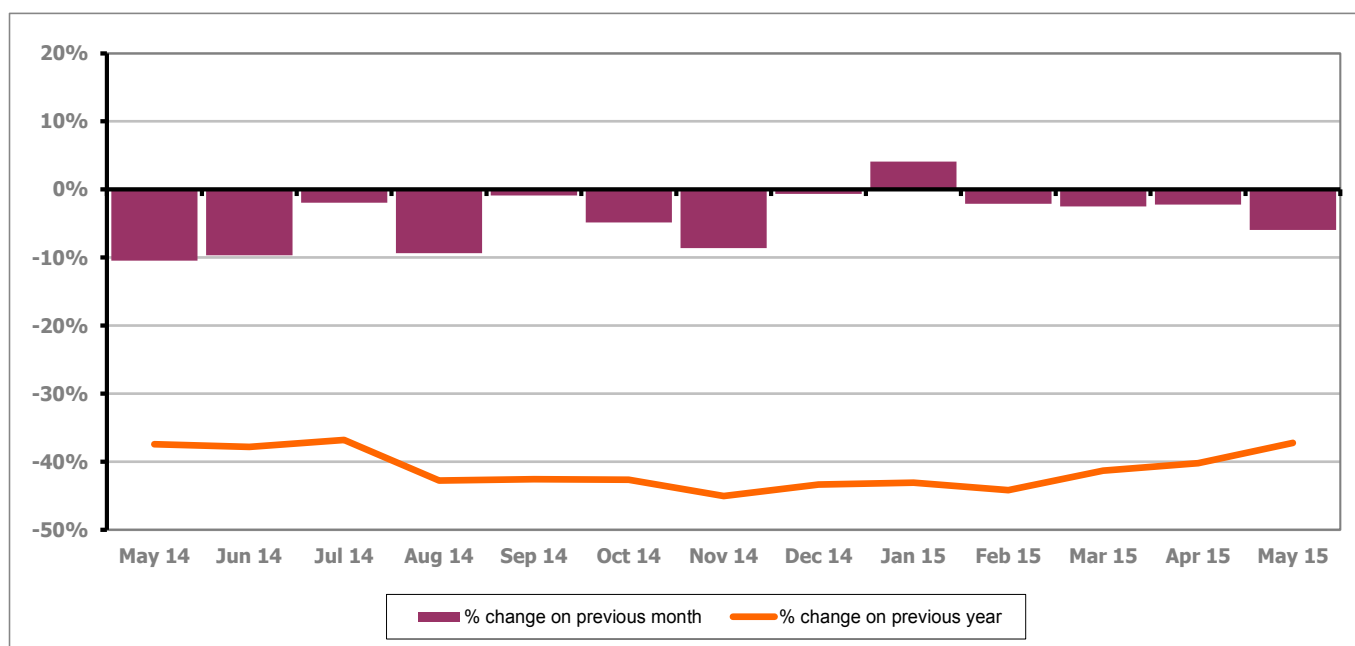
Figure 17: Stroud District claimants - Month on Month and Year on Year change

Figure 17 shows the monthly claimant count decreased by 5.9% since April 2015. The change on the previous year has increased between April and May 2015 to -37.2%.

PART 4: LOCAL AUTHORITY AND DISTRICT ANALYSIS

4.5 Stroud District continued...

Figure 18: Claimant rates across Stroud District wards - May 2015

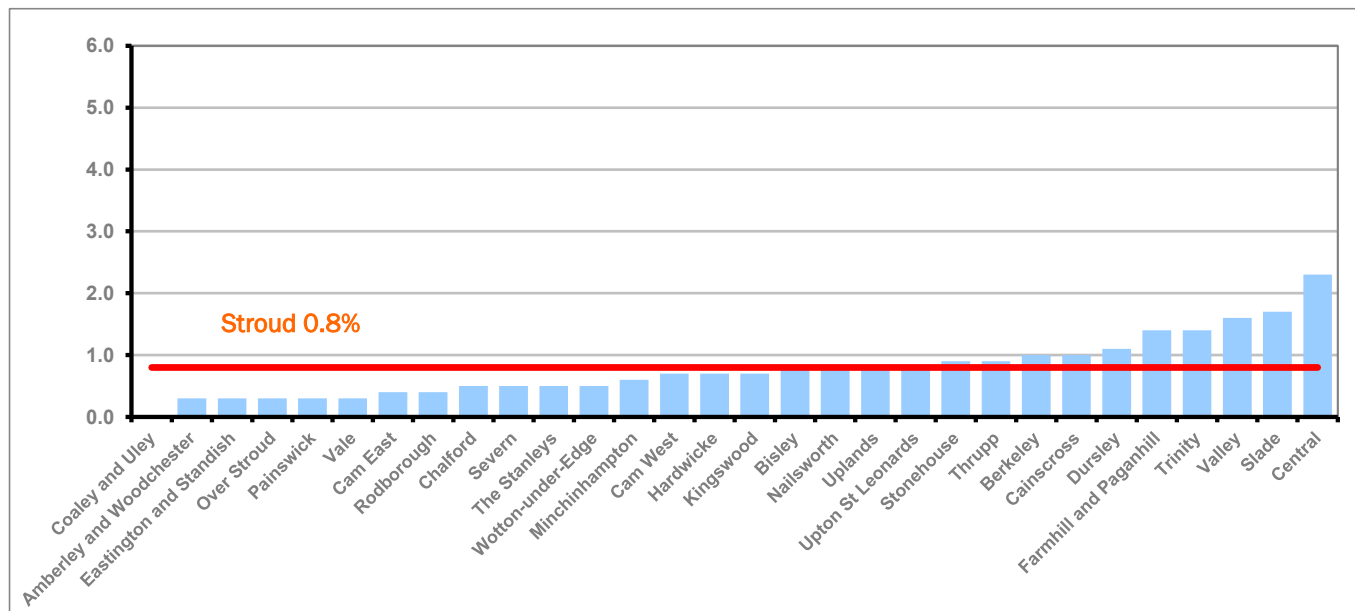
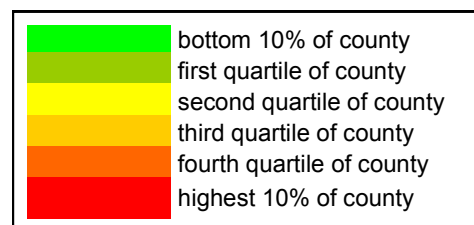


Figure 18 shows the claimant rates in Stroud District wards. The red line represents the average claimant rate across the District of 0.8%. Ten wards are above the average.

Table 9: Analysis of Claimant Count at Stroud District ward level - May 2015

District	Ward	Rate	Rank*
Stroud	Coaley and Uley	<0.3	1
Stroud	Amberley and Woodchester	0.3	5
Stroud	Eastington and Standish	0.3	5
Stroud	Over Stroud	0.3	5
Stroud	Painswick	0.3	5
Stroud	Vale	0.3	5
Stroud	Cam East	0.4	23
Stroud	Rodborough	0.4	23
Stroud	Chalford	0.5	31
Stroud	Severn	0.5	31
Stroud	The Stanleys	0.5	31
Stroud	Wotton-under-Edge	0.5	31
Stroud	Minchinhampton	0.6	40
Stroud	Cam West	0.7	52
Stroud	Hardwicke	0.7	52
Stroud	Kingswood	0.7	52
Stroud	Bisley	0.8	70
Stroud	Nailsworth	0.8	70
Stroud	Uplands	0.8	70
Stroud	Upton St Leonards	0.8	70
Stroud	Stonehouse	0.9	81
Stroud	Thrupp	0.9	81
Stroud	Berkeley	1.0	88
Stroud	Cainscross	1.0	88
Stroud	Dursley	1.1	99
Stroud	Farmhill and Paganhill	1.4	112
Stroud	Trinity	1.4	112
Stroud	Valley	1.6	121
Stroud	Slade	1.7	124
Stroud	Central	2.3	131



* 1 = "best" and 142 = "worst"

Table 9 shows overall claimant rates for Stroud District wards and their position relative to all wards in Gloucestershire.

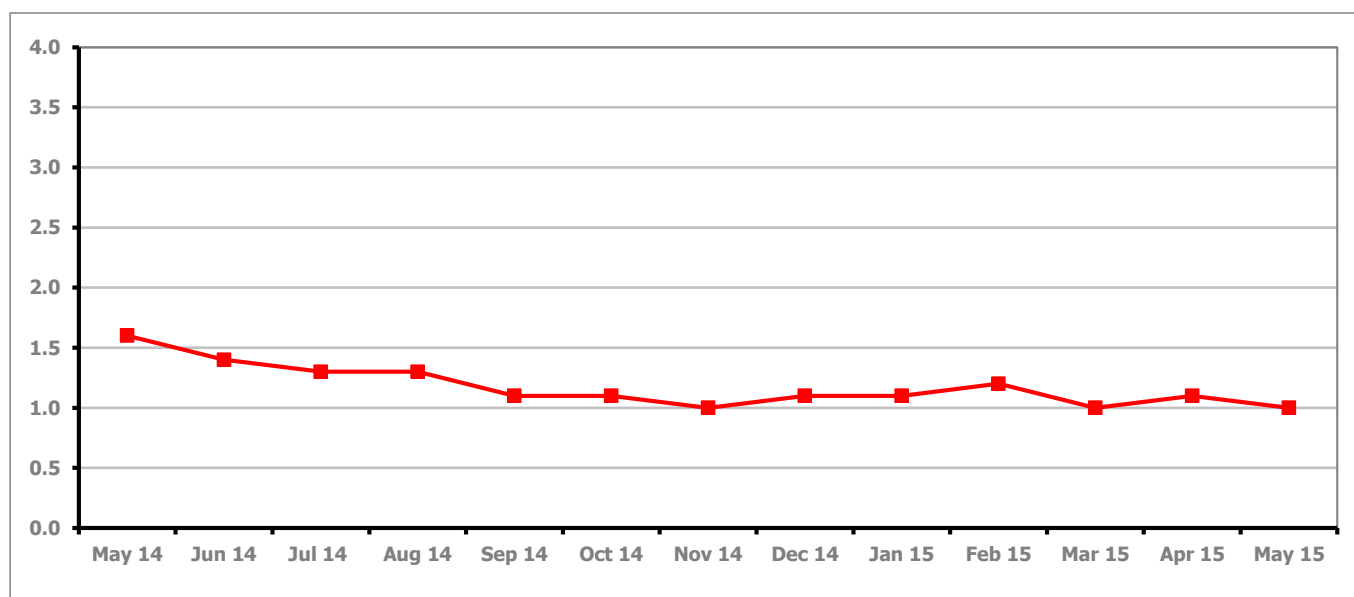
PART 4: LOCAL AUTHORITY DISTRICT AND WARD ANALYSIS**4.6 Tewkesbury District****Claimant Rate and Claimant Count***Figure 19: Tewkesbury District claimant rate over the last year*

Figure 19 shows the claimant rate for Tewkesbury District decreased in May 2015 to 1.0%

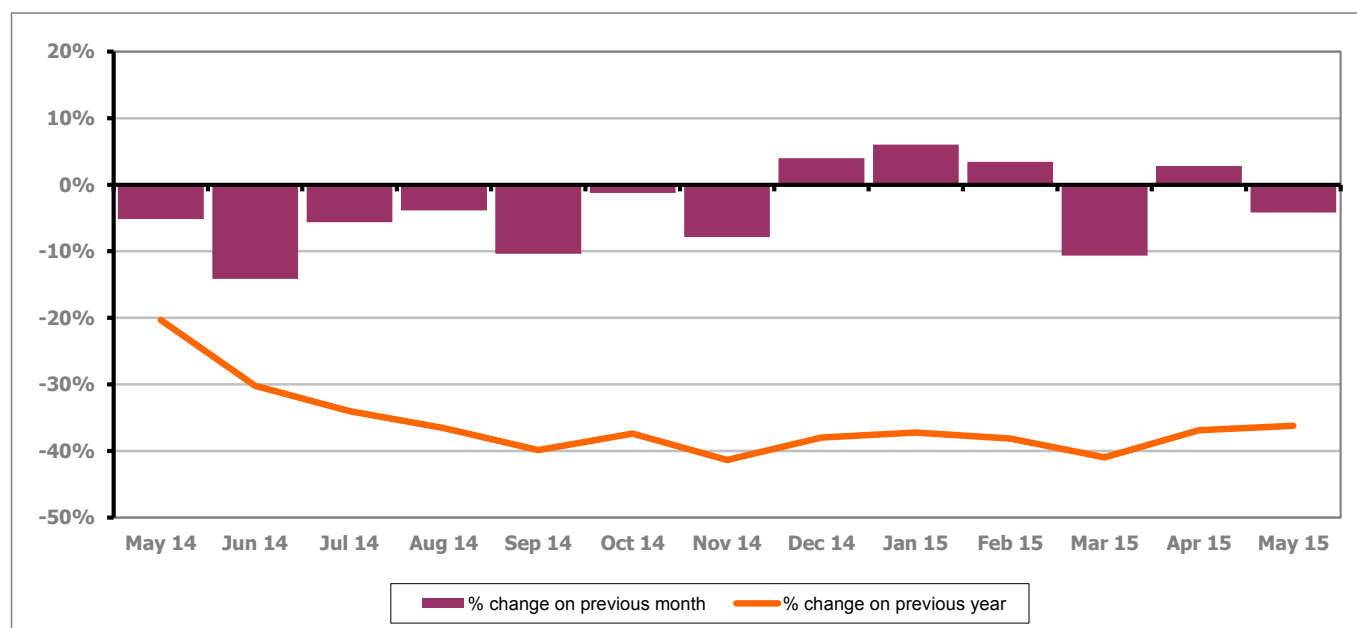
Figure 20: Tewkesbury District claimants - Month on Month and Year on Year change

Figure 20 shows that the monthly claimant count decreased by 4.2% since April 2015. The change on the previous year increased between April and May 2015 to -36.2%.

PART 4: LOCAL AUTHORITY AND DISTRICT ANALYSIS

4.6 Tewkesbury District continued...

Figure 21: Claimant rates across Tewkesbury District wards - May 2015

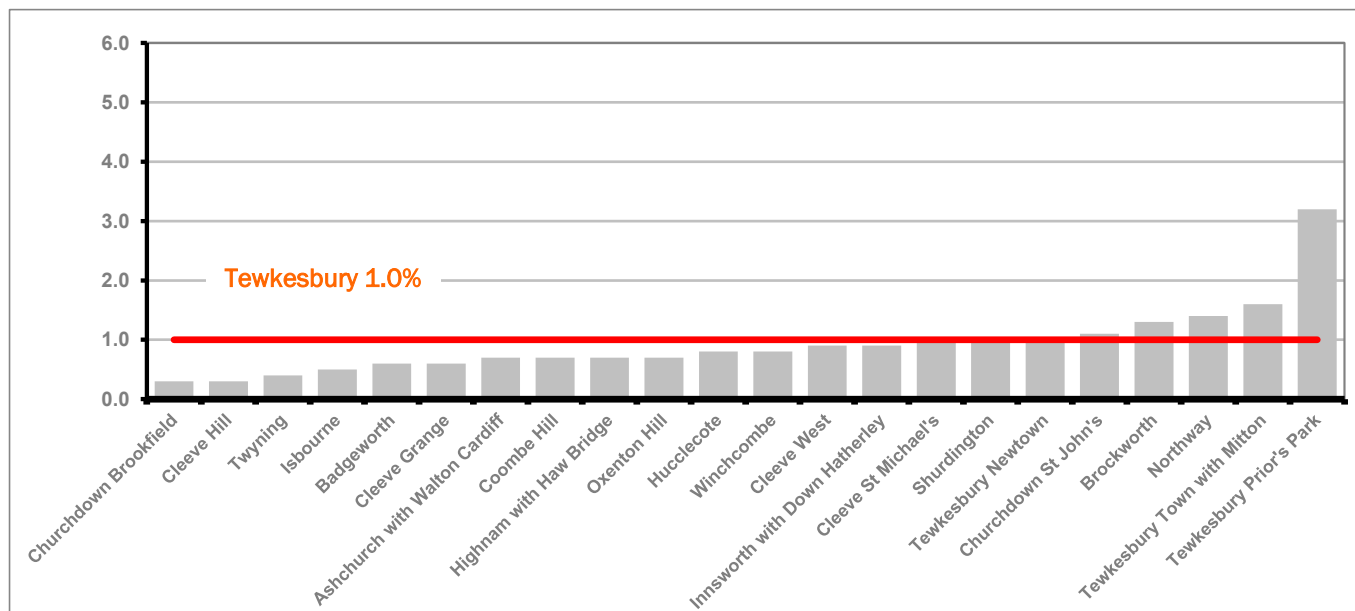


Figure 21 shows the claimant rates in Tewkesbury District wards. The red line represents the average claimant rate across the District of 1.0% and five wards are above the average.

Table 10: Analysis of Claimant Count at Tewkesbury District level - May 2015

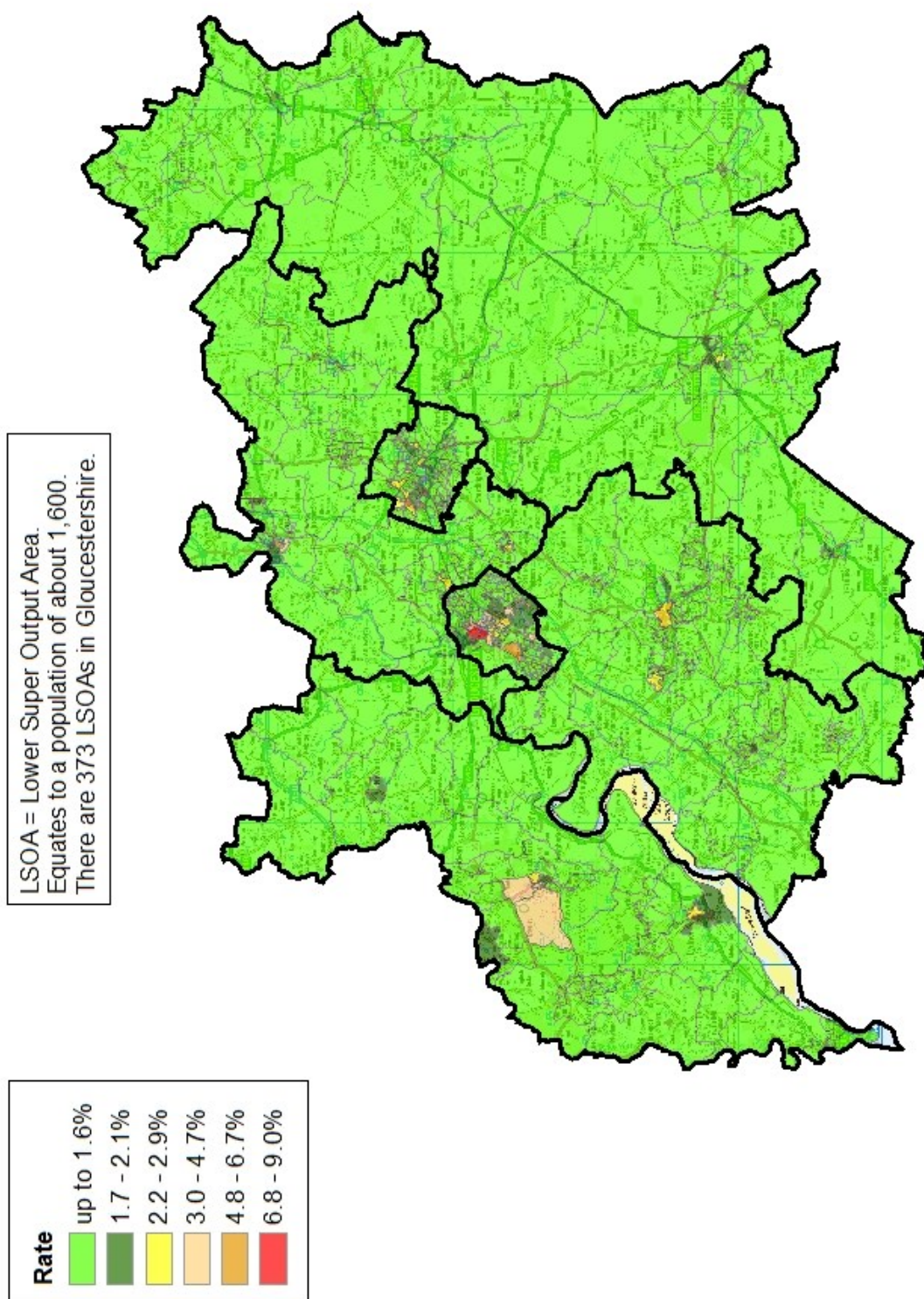
District	Ward	Rate	Rank*	
Tewkesbury	Churchdown Brookfield	0.3	5	bottom 10% of county
Tewkesbury	Cleeve Hill	0.3	5	first quartile of county
Tewkesbury	Twyning	0.4	23	second quartile of county
Tewkesbury	Isbourne	0.5	31	third quartile of county
Tewkesbury	Badgeworth	0.6	40	fourth quartile of county
Tewkesbury	Cleeve Grange	0.6	40	highest 10% of county
Tewkesbury	Ashchurch with Walton Cardiff	0.7	52	
Tewkesbury	Coombe Hill	0.7	52	
Tewkesbury	Highnam with Haw Bridge	0.7	52	
Tewkesbury	Oxenton Hill	0.7	52	
Tewkesbury	Hucclecote	0.8	70	
Tewkesbury	Winchcombe	0.8	70	
Tewkesbury	Cleeve West	0.9	81	
Tewkesbury	Innsworth with Down Hatherley	0.9	81	
Tewkesbury	Cleeve St Michael's	1.0	88	
Tewkesbury	Shurdington	1.0	88	
Tewkesbury	Tewkesbury Newtown	1.0	88	
Tewkesbury	Churchdown St John's	1.1	99	
Tewkesbury	Brockworth	1.3	109	
Tewkesbury	Northway	1.4	112	
Tewkesbury	Tewkesbury Town with Mitton	1.6	121	
Tewkesbury	Tewkesbury Prior's Park	3.2	140	

* 1 = "best" and 142 = "worst"

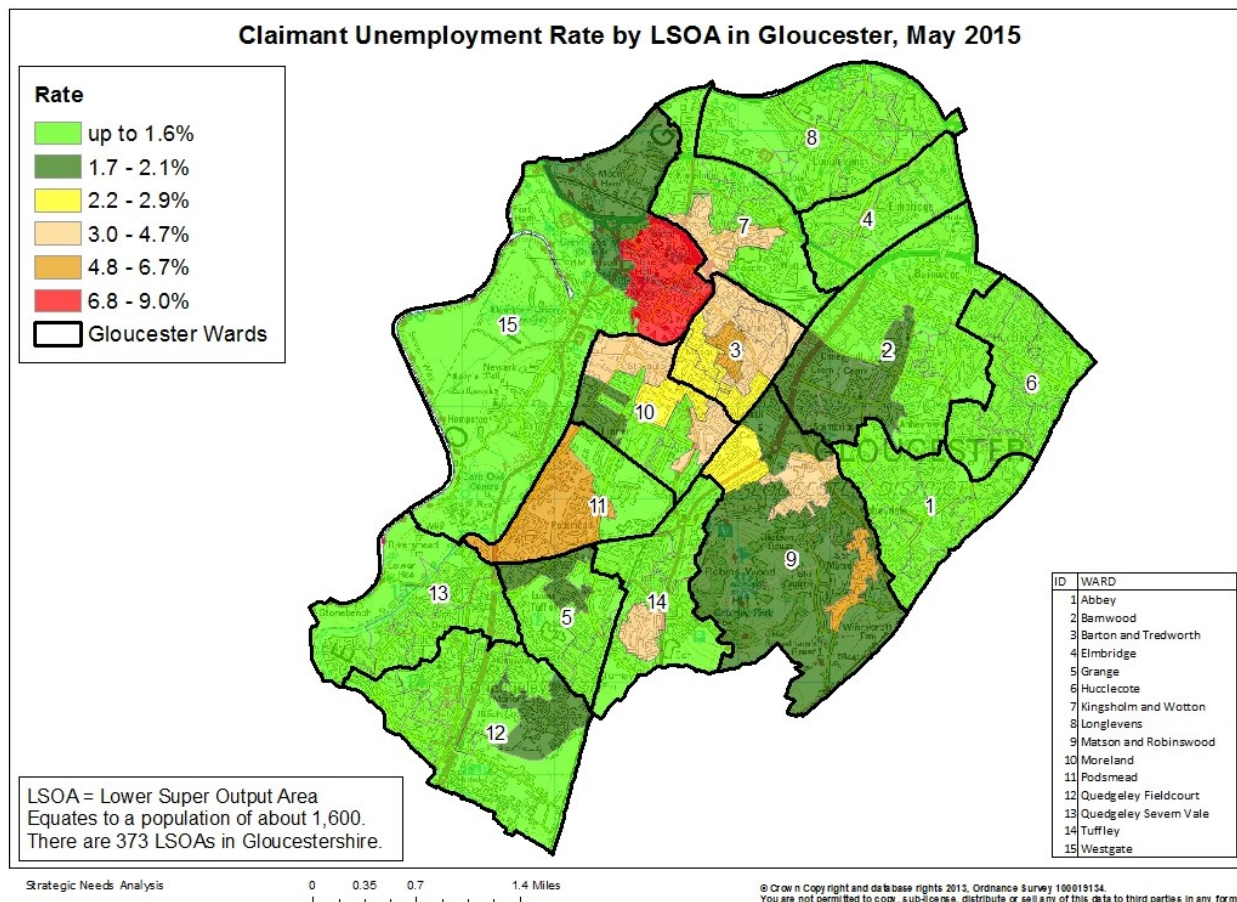
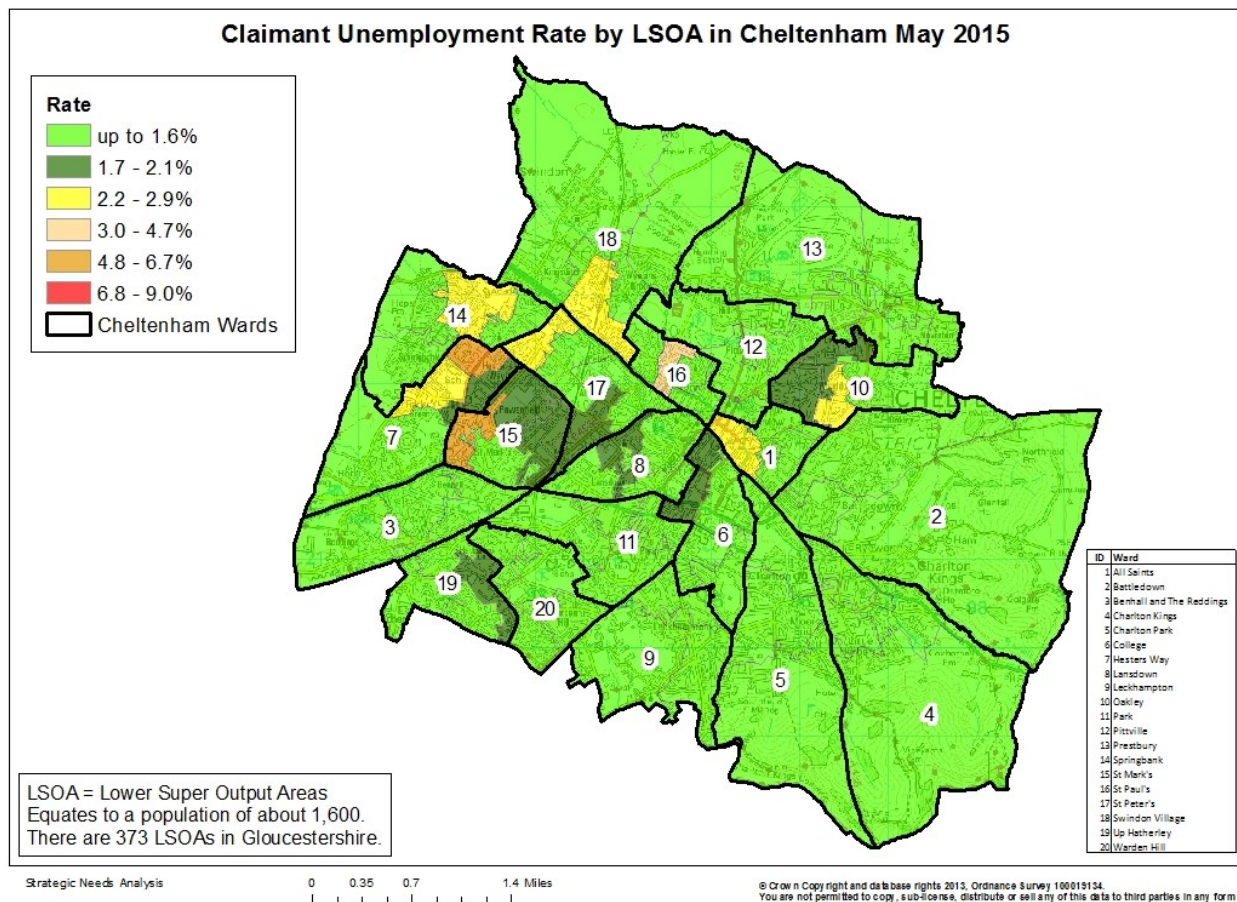
Table 10 shows overall claimant rates for Tewkesbury District wards and their position relative to all wards in Gloucestershire.

PART 5: MAP SHOWING DISTRIBUTION OF CLAIMANT RATE ACROSS GLOUCESTERSHIRE

Claimant Unemployment Rate by LSOA in Gloucestershire, May 2015



PART 5: MAP SHOWING DISTRIBUTION OF CLAIMANT RATE ACROSS GLOUCESTERSHIRE



PART 6: YOUTH UNEMPLOYMENT(18-24 year olds)

Youth Claimant Rate and Claimant Count

The claimant rate for young people is higher than for the working age (16-64) population with 2.0% of 18-24 year olds in Gloucestershire claiming Job Seekers Allowance (1.2% for working age).

Figure 22: Youth Claimant Rate for Gloucestershire, the South West and UK over the past year

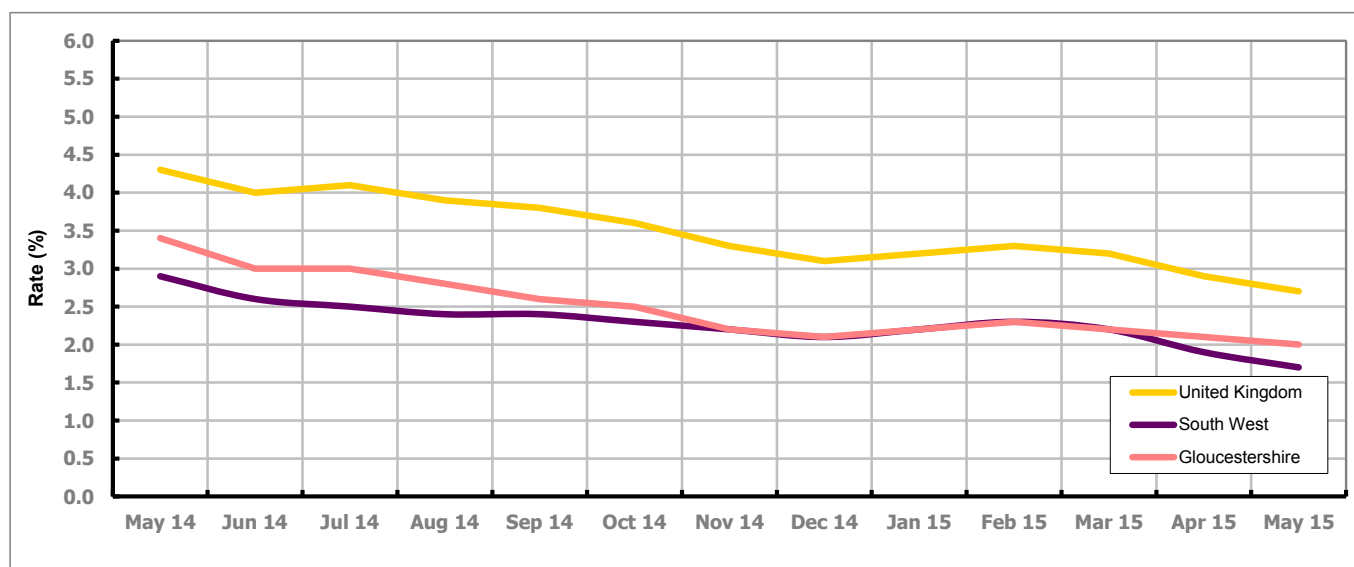


Figure 22 shows Gloucestershire's 18-24 claimant rate is higher than the South West average of 1.7%, but 0.7% lower than the UK average of 2.7%

Figure 23: Claimant Count for Gloucestershire over the past year

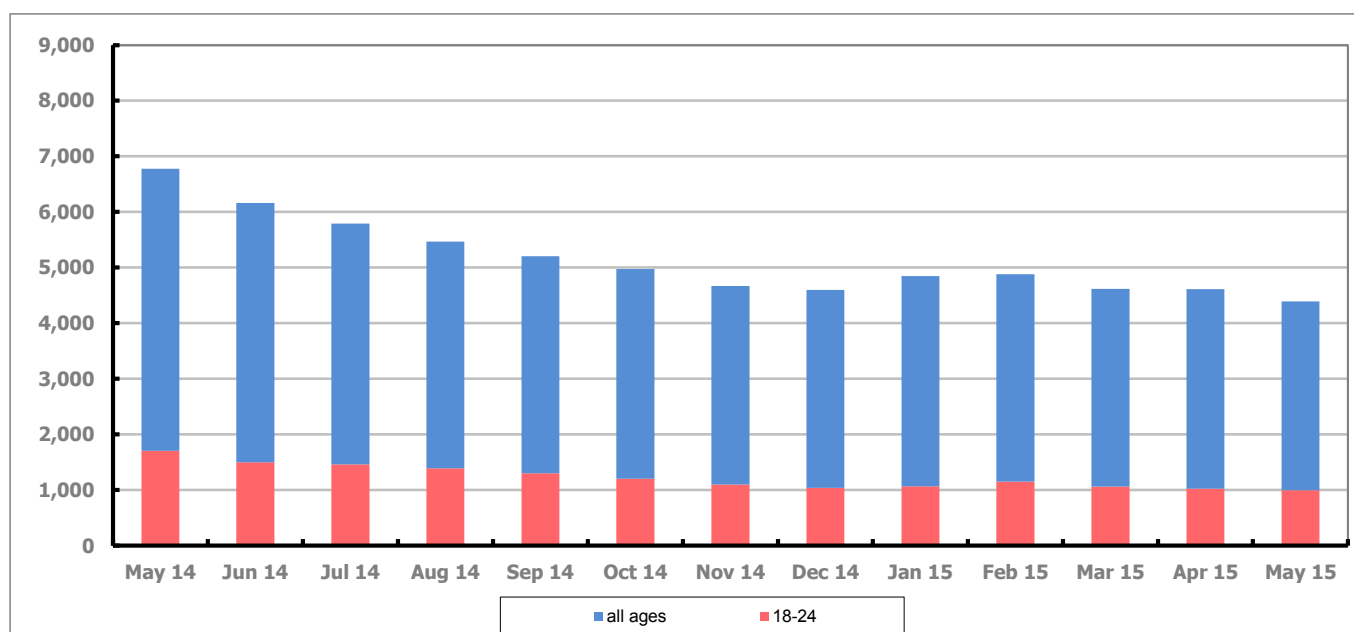


Figure 23 shows that in May 2015, 995 people aged 18-24 were claiming Job Seekers Allowance in Gloucestershire, this represents 22.6% of total working age claimants.

PART 6: YOUTH UNEMPLOYMENT

Youth Claimant Rate and Claimant Count

Figure 24: Youth Claimant Rate for Gloucestershire, the South West and UK over the past year

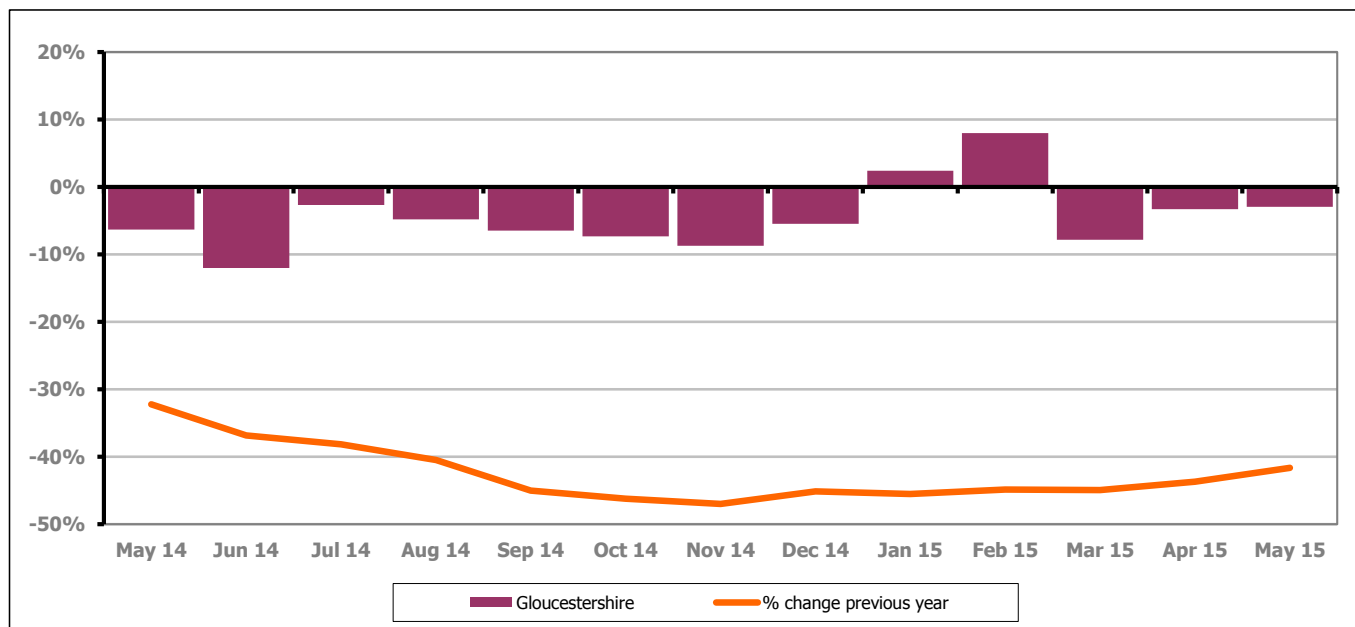


Figure 24 shows the number of young claimants decreased in May 2015 by 2.9% this represented 30 people. Over the last year the number of young claimants fell by 41.6% or 710 people.

Youth unemployment and duration of claim

Figure 25: Duration of claim in the 18-24 year age group

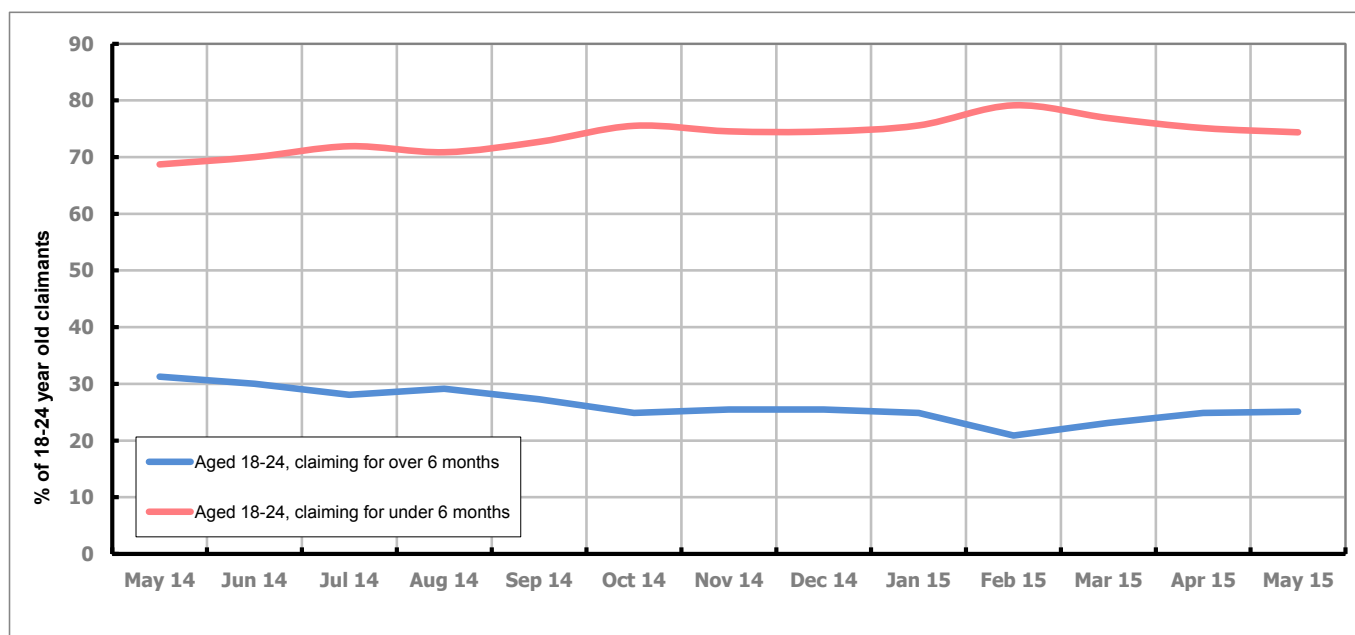


Figure 25 shows the proportion of 18-24 year olds claiming for less than six months decreased from 75.1% of 18-24 year old claimants in April to 74.4% in May 2015. During the same period those claiming for more then six months increased from 24.9% to 25.1%.

PART 7: YOUNG PEOPLE NOT IN EDUCATION, EMPLOYMENT OR TRAINING (NEET) IN GLOUCESTERSHIRE

Data provided by Gloucestershire Youth Support Team on the situation of young people (16-18) in Gloucestershire who are not in education, employment or formal training.

Gloucestershire Youth Support Team is required to report performance with the 16-18 age range against nationally defined criteria for counting the NEET group. The NEET group includes young people actively seeking education, employment or training as well as those young people who are either not yet ready or who are unable to access these opportunities because of their personal circumstances. The figures quoted below include young people in both of these categories.

Summary

At the end of May 2015 there were 476 young people aged 16-18 not in education, employment or training in Gloucestershire and this figure translates into an adjusted (*) 16-18 NEET population of 3.72%. The total number of NEET young people decreased by 20 in May 2015 compared to April 2015. Half of the districts saw an increase in their figures while the others saw a decrease.

Total NEET Group by District Area

May 2015 NEET data

	Cheltenham	Cotswold	Forest	Gloucester	Stroud	Tewkesbury	Total
Total NEET	93	66	51	150	62	54	476
Cohort	2372	1890	1847	4116	2519	1537	14281
% NEET	3.92	3.49	2.76	3.64	2.46	3.51	3.72

If you would like to receive any further information on Gloucestershire's NEET strategy then please contact Ruth.Critchlow@Prospects.co.uk or telephone 01452 426900.

(*) Adjustment includes a proportion of young people aged 16-18 whose outcomes are not-known to Gloucestershire Youth Support Team.