

Tewkesbury Parking Review

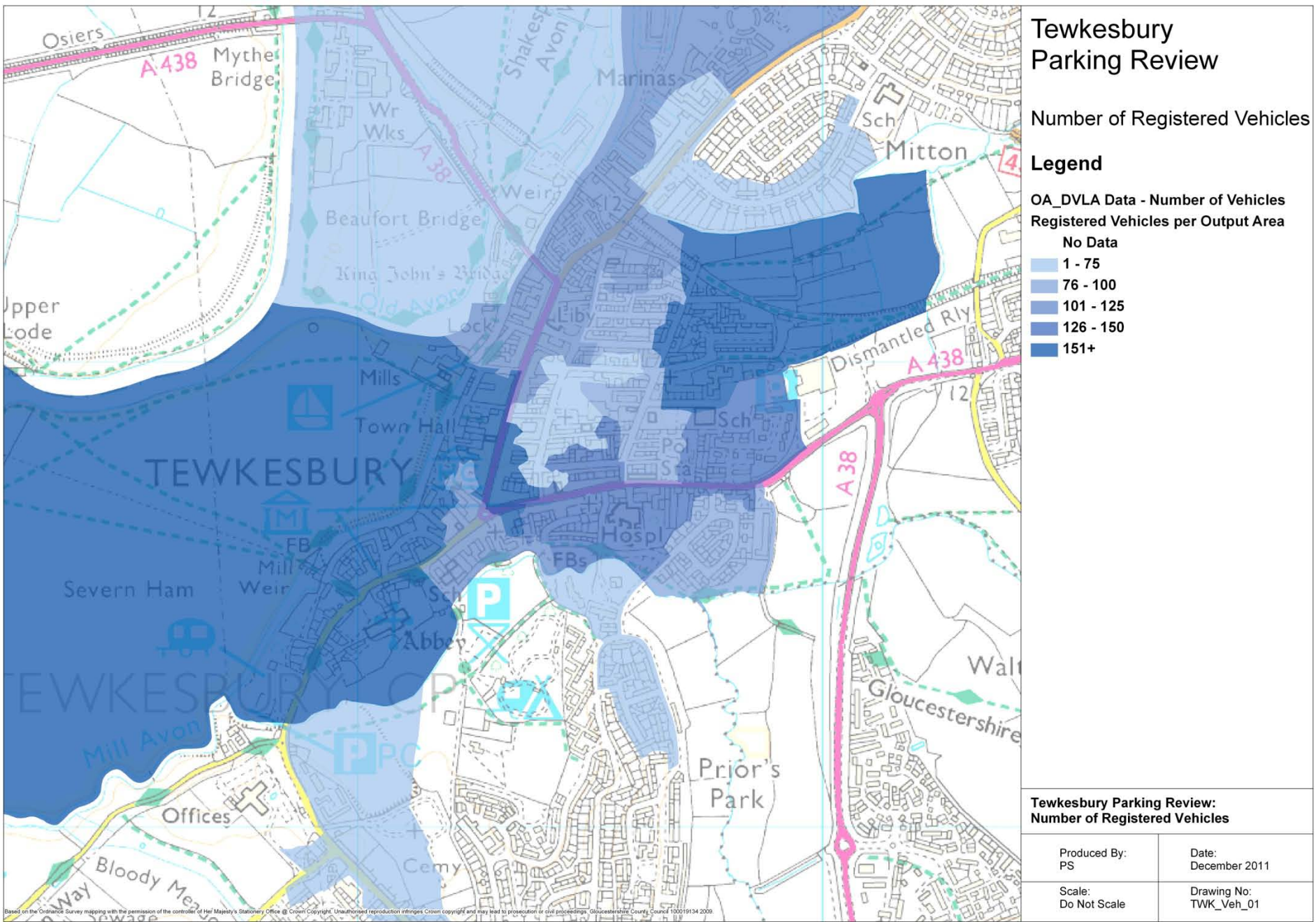
Background Data

April 2012

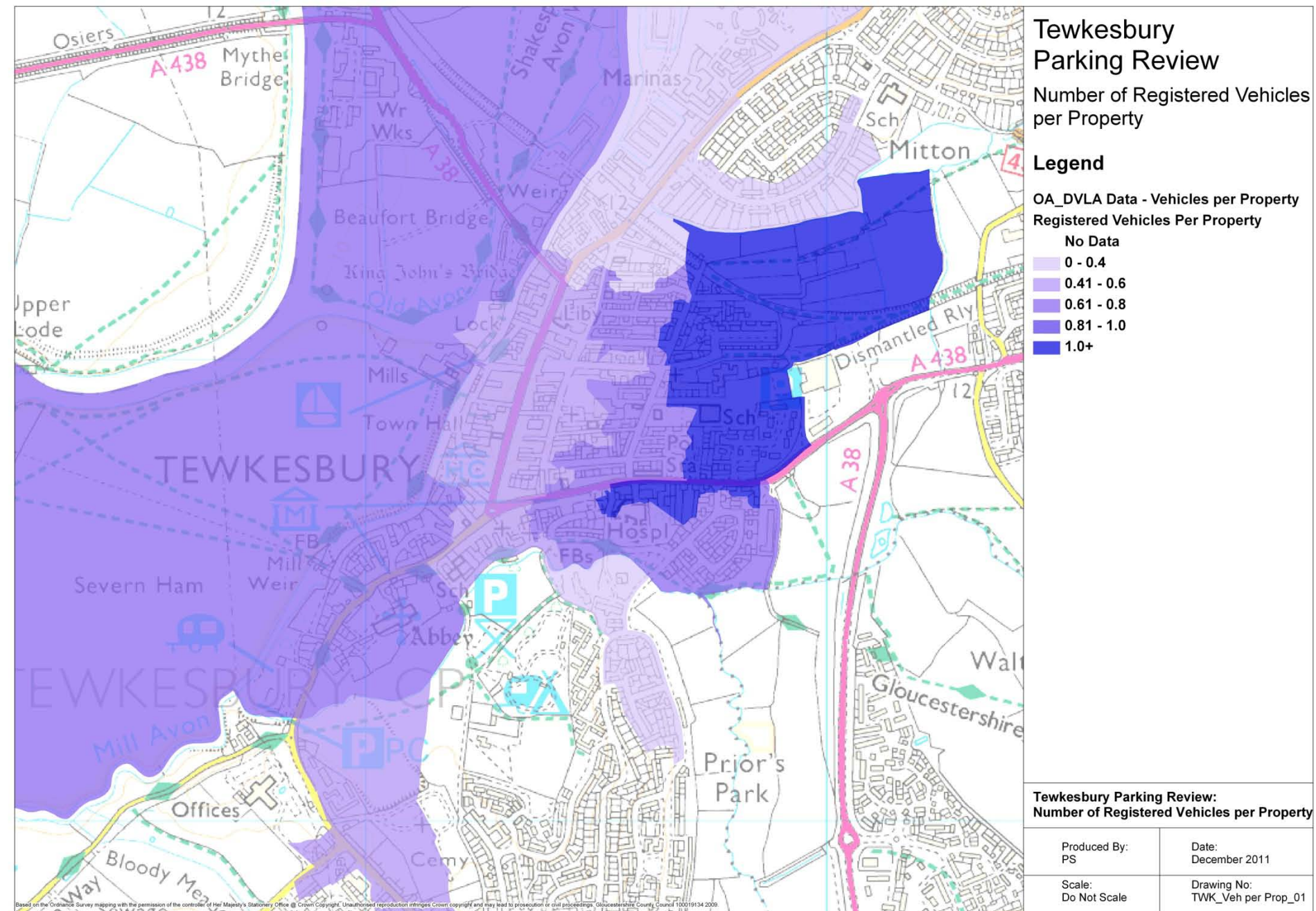
This booklet presents data collected as part of a review of parking in central Tewkesbury. The data will be used to quantify parking issues in the town, and understand travel patterns and parking behaviour in the town.

The data includes:

- Vehicle ownership information, provided by the DVLA
- Off-street parking availability data provided by the Valuation Office
- Results of a Parking Survey undertaken in November 2011 that tells us:
 - How many vehicles were parked in the town
 - How long these vehicles stayed, and
 - Where these vehicles came from



Vehicles Per Property– Data supplied by DVLA (October 2011)



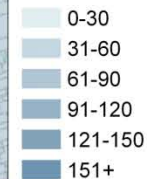
Domestic Off-Street Parking Spaces – Data supplied by Valuation Office (October 2011)

Tewkesbury Parking Review

Number of Domestic Off-Street Parking Spaces

Legend

Domestic Off-St Parking
No. of Domestic Off-St Parking Spaces



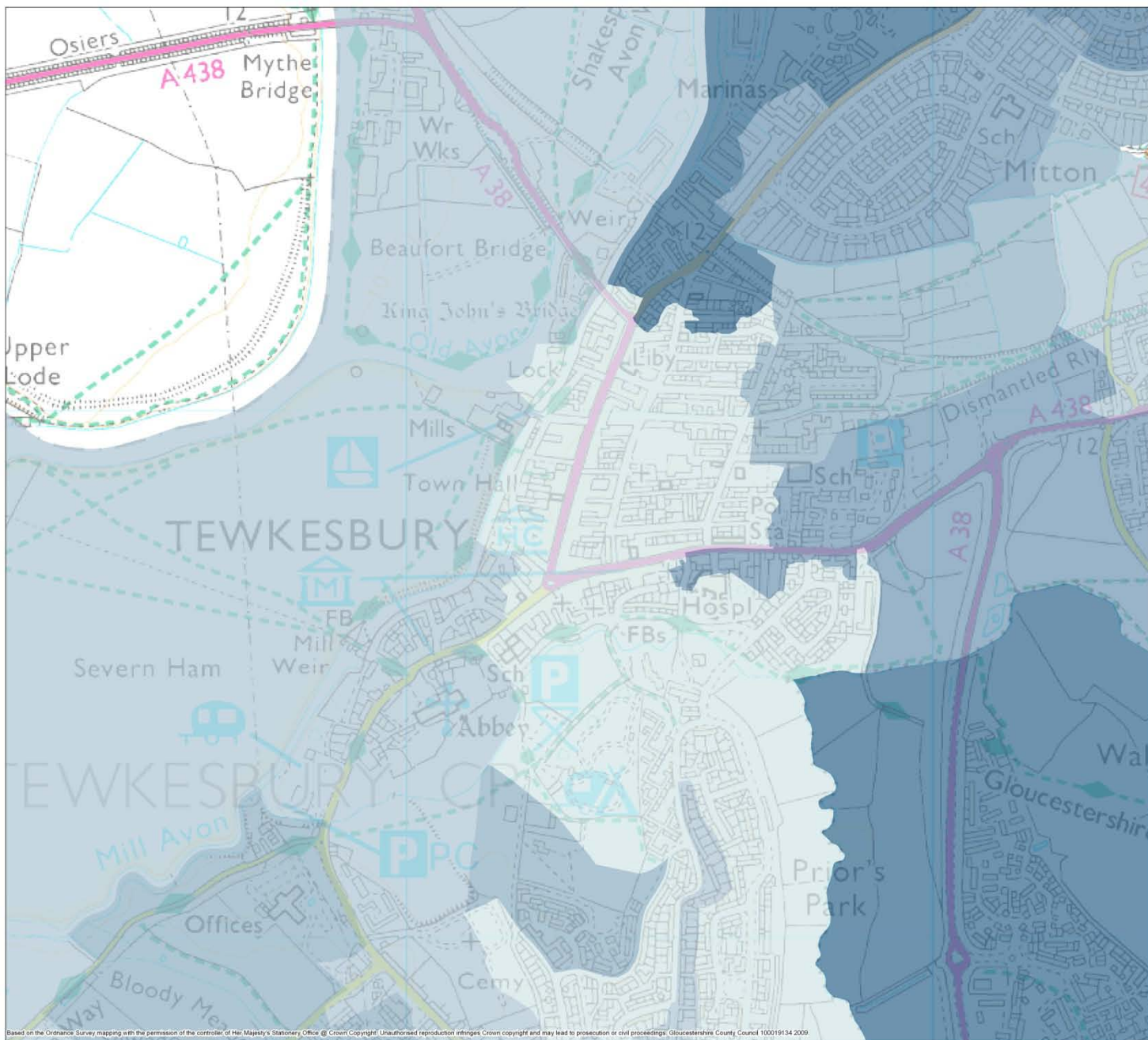
Tewkesbury Parking Review:
Number of Domestic Off-St Parking Spaces

Produced By:
PS

Date:
December 2011

Scale:
Do Not Scale

Drawing No:
TWK_Dom Off-St_01



Domestic Off-Street Parking Spaces per Domestic Property– Data supplied by Valuation Office (October 2011)

Tewkesbury Parking Review

Number of Domestic Off-Street Parking Spaces per Domestic Property

Legend

Domestic Off-St Parking per Prop
No. of Off-St Spaces Per Domestic Prop

- 0.0 - 0.25
- 0.26 - 0.50
- 0.51 - 0.75
- 0.76 - 0.82
- 0.83 - 1.0
- 1.0 +

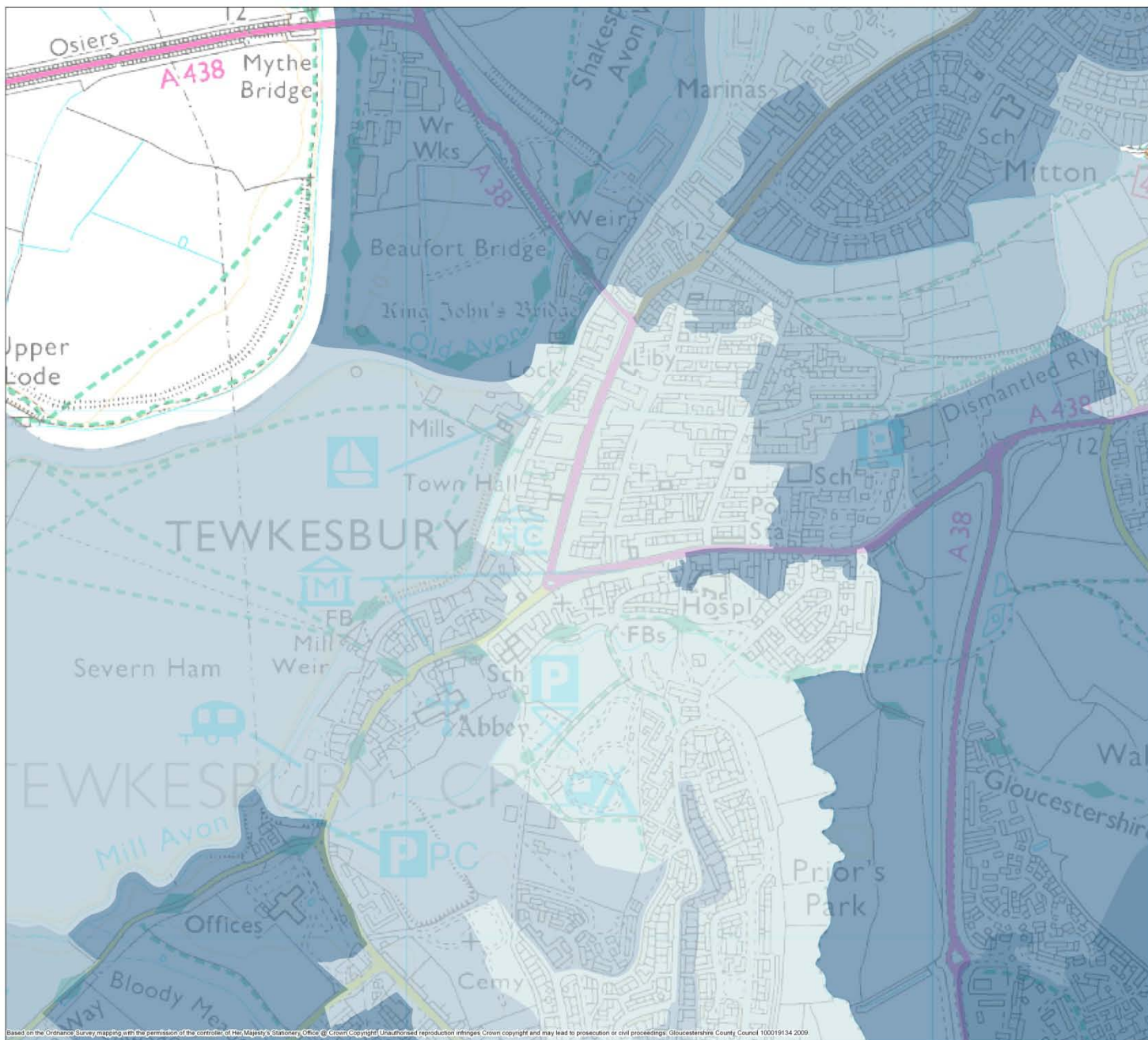
Tewkesbury Parking Review:
No.Domestic Off-St Spaces per Property

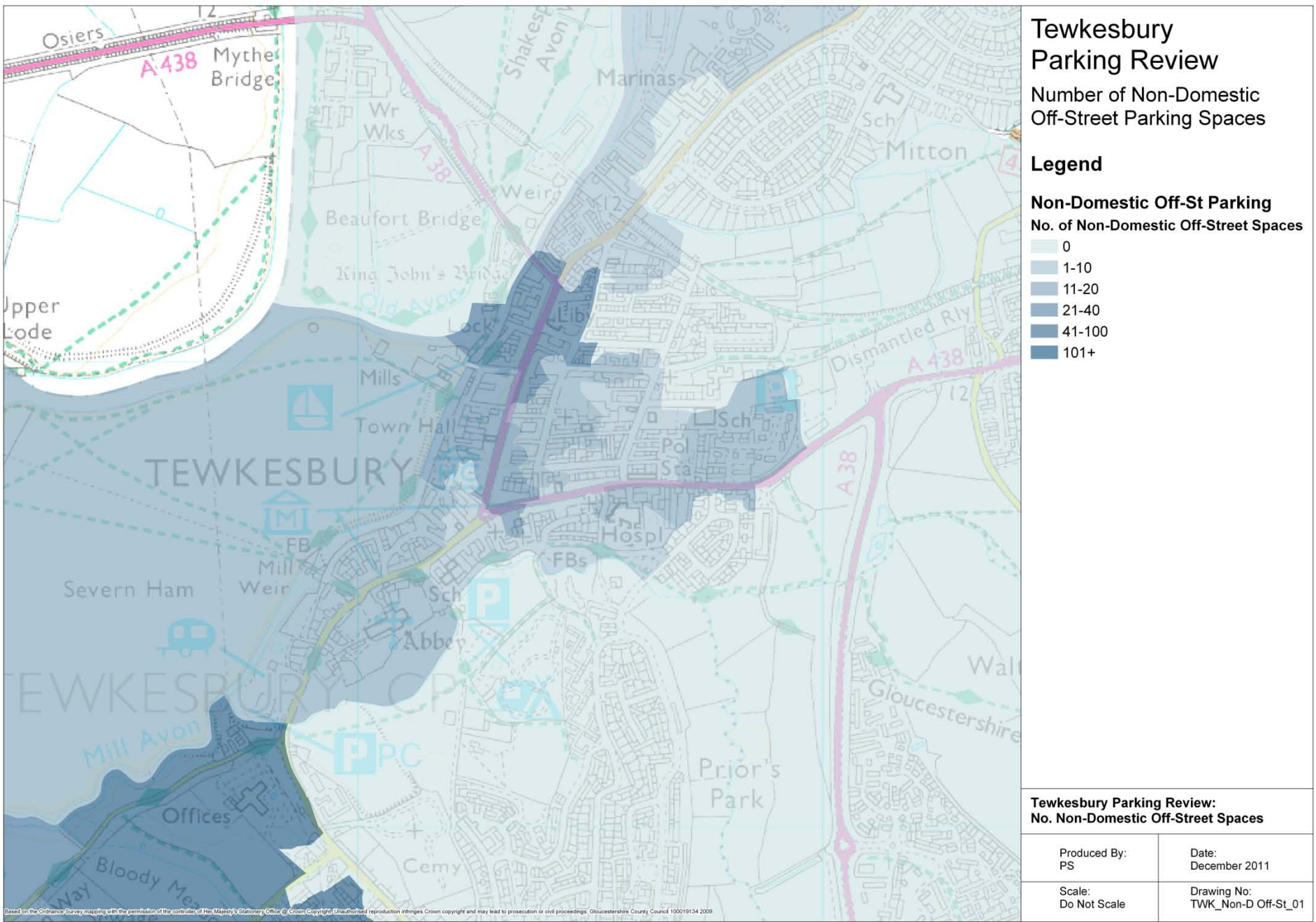
Produced By:
PS

Date:
December 2011

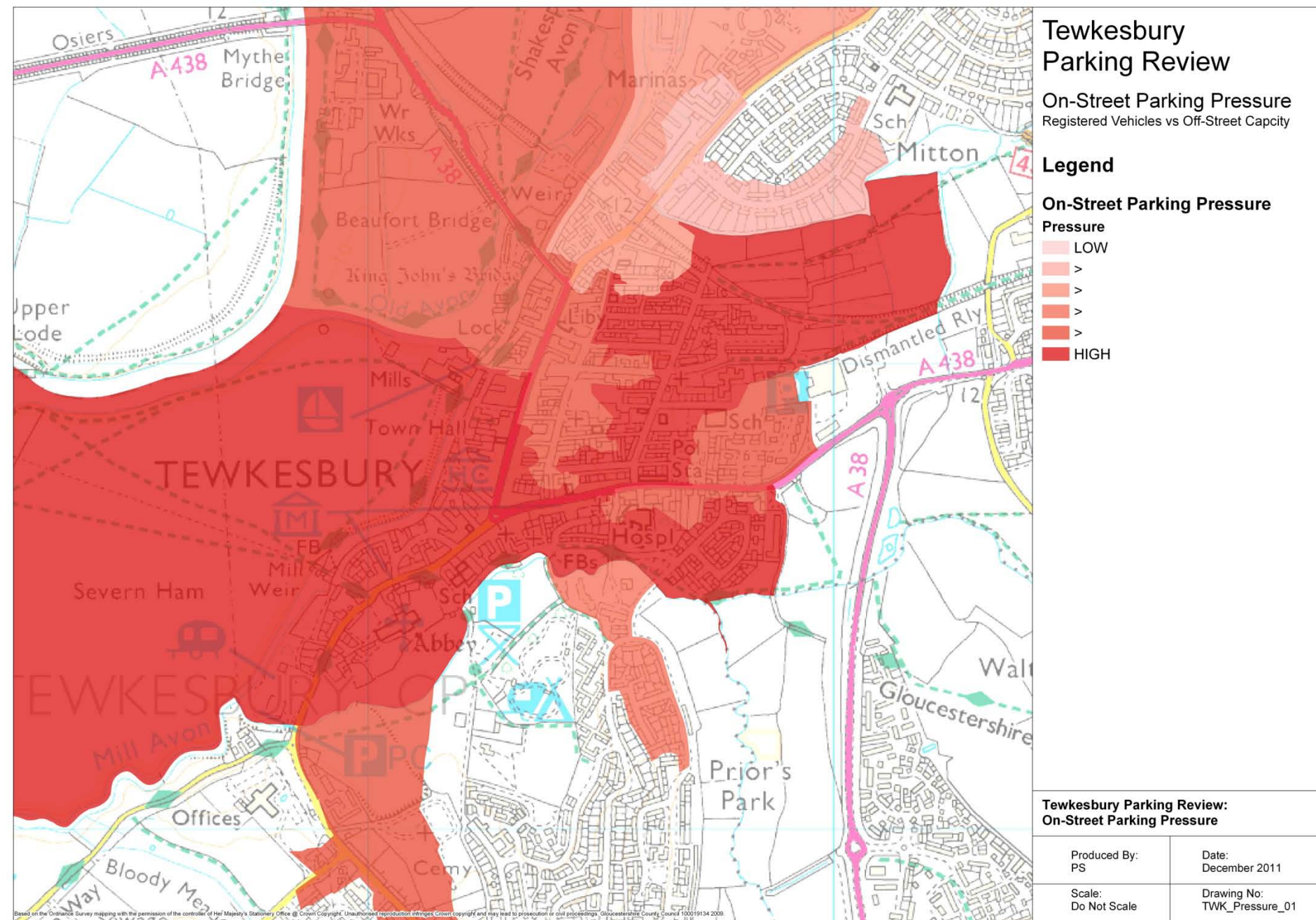
Scale:
Do Not Scale

Drawing No:
TWK_Dom Off-St P_01

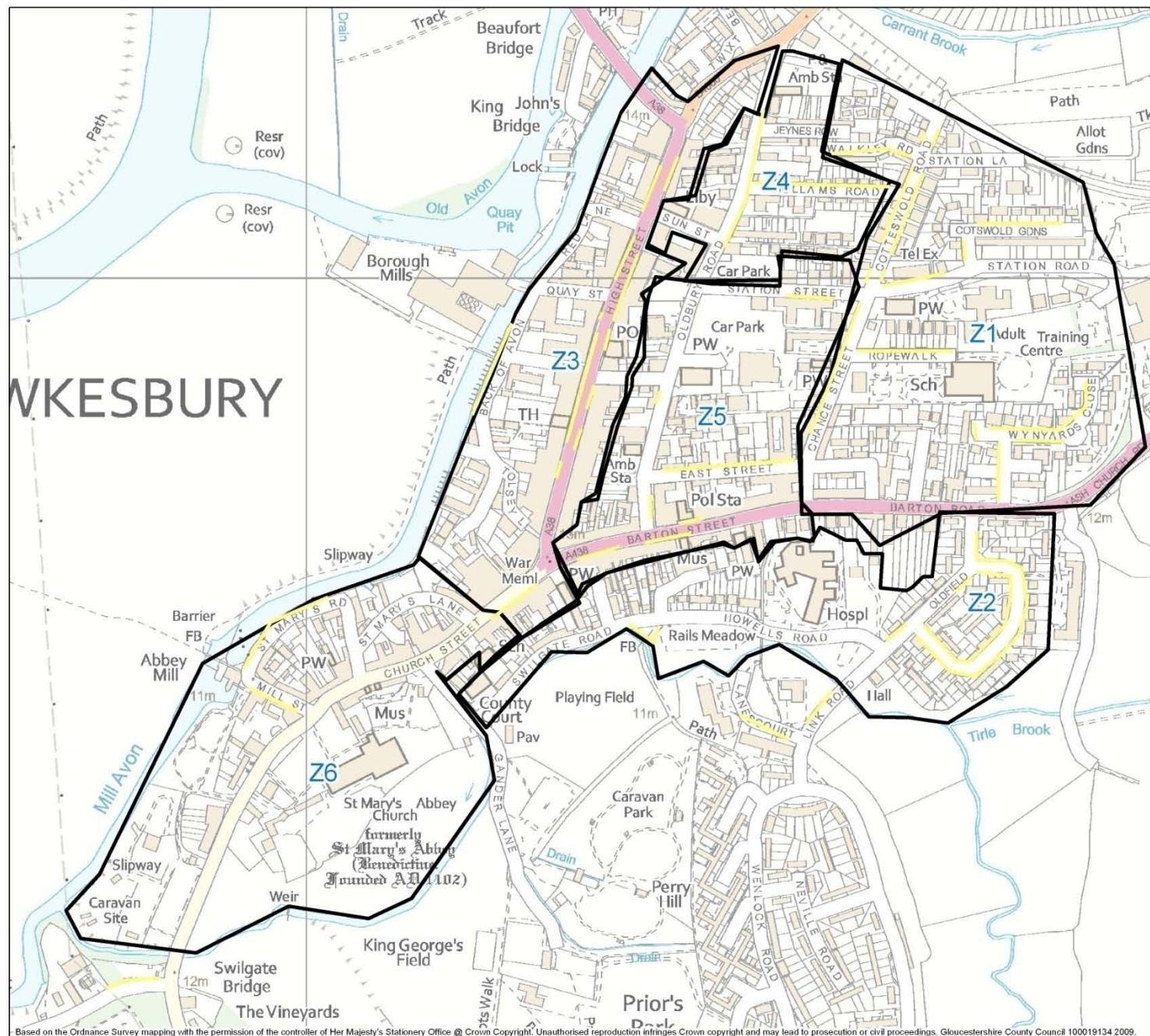




On Street Parking Pressure – Registered Vehicles vs. Off-Street Parking Capacity



Parking Survey Zones – On street



Tewkesbury ANPR Survey Zones

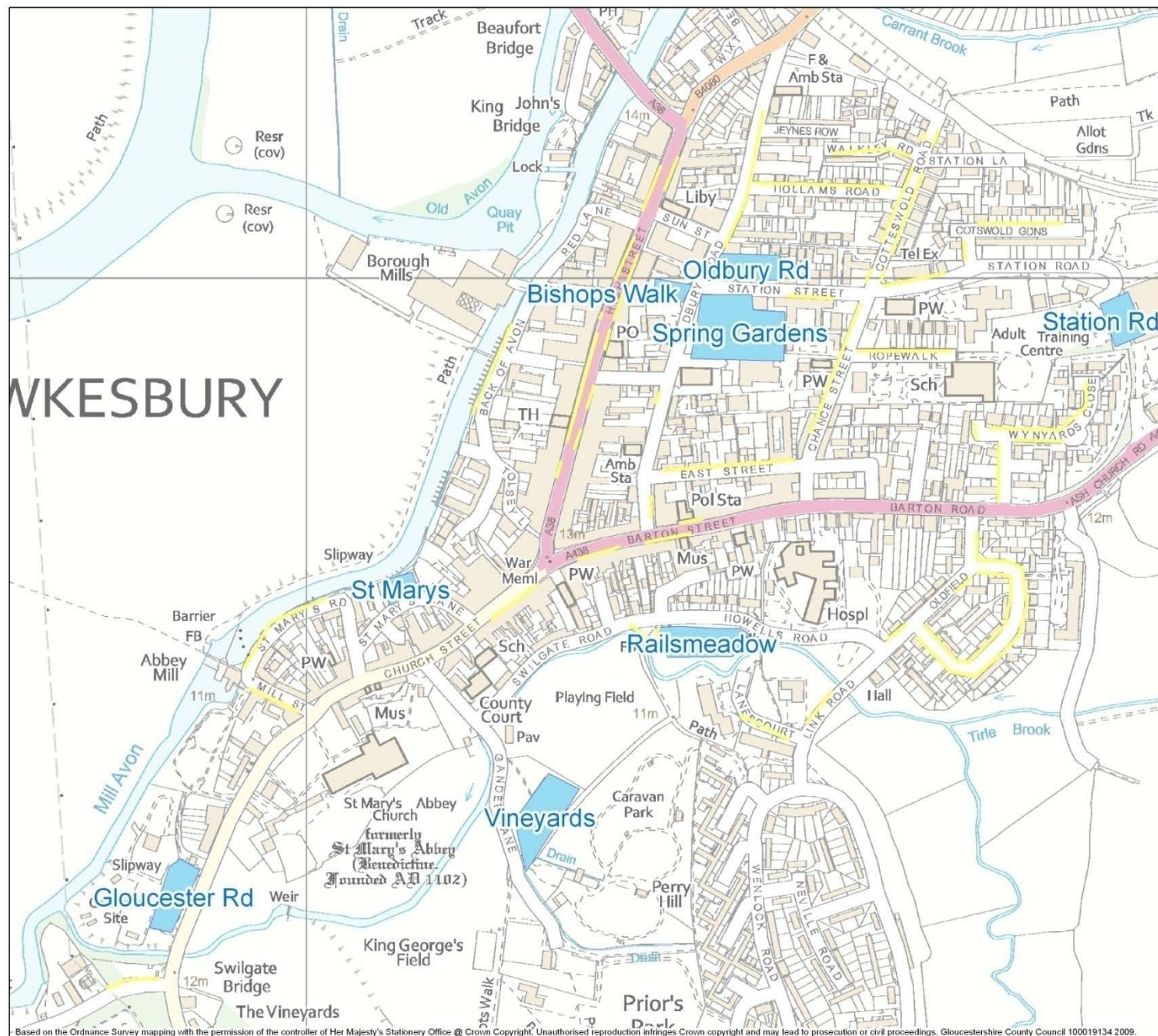
- Z1 Zone Boundary and Reference
- On-street parking locations, within zone
- Car Park Locations

For the parking survey, the town centre was split into six district zones. Parking Patterns have been analysed in each zone so that differences across the town can be identified. Each car park was also surveyed at the same time.

Produced By: Date:
KM September 2011

Scale: Drawing No:
Do Not Scale Tw_Zones_1

Parking Survey Zones – Off street



Tewkesbury ANPR Survey Zones

Z1

Zone Boundary and Reference

On-street parking locations, within zone

Car Park Locations

For the parking survey, the town centre was split into six district zones. Parking Patterns have been analysed in each zone so that differences across the town can be identified. Each car park was also surveyed at the same time.

Produced By: Date:
KM September 2011

Scale: Drawing No:
Do Not Scale Tw_CPs_1

Parking Survey

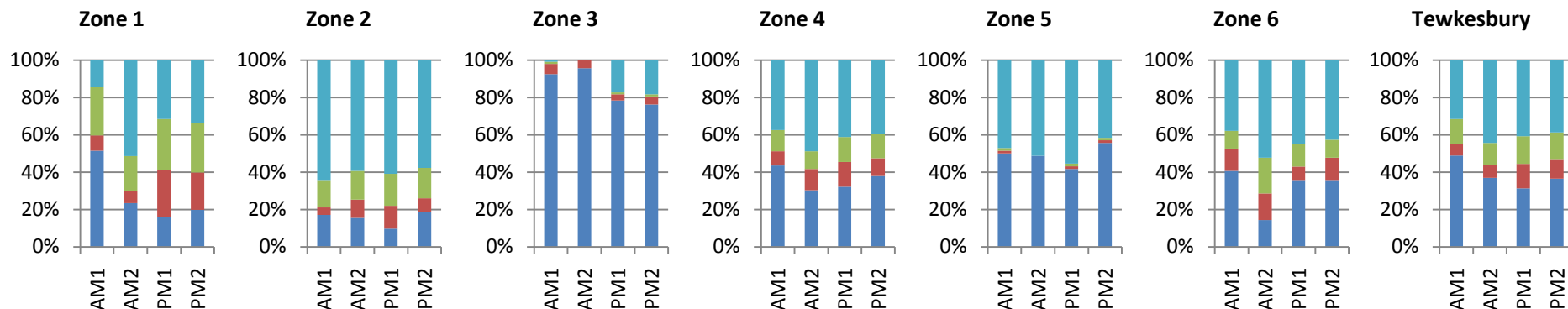
A parking survey was undertaken across 3 weekdays and 1 weekend in November 2011.

The results from the survey tell us

- How many vehicles were parked in the town
- How long these vehicles stayed, and
- Where these vehicles came from

The data presented on the following pages shows parking patterns on a typical weekday. A summary of a similar analysis of the survey results for Saturdays, Sundays is presented at the end of the booklet.

Parking Survey – How many vehicles were parked, and for how long? (weekday average)



The graphs above show how much of the available parking capacity in each zone was occupied by long stay, medium stay and short stay parking in both the morning and afternoon.

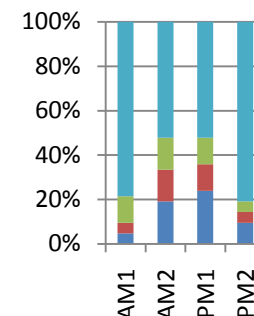
The results clearly show that on-street parking is only congested in two just two zones (zone 1 & 3). There is free spaces at certain times of the day in all zones with only Zone 3 AM at capacity. Long-stay parking accounts for approximately 22% of capacity across the town, with total capacity at an average of 60%.

There is a lot of spare capacity in the off-street car parks, which over the whole town are less than half full. Long-stay parking in the car parks account for only approximately 18% of capacity.

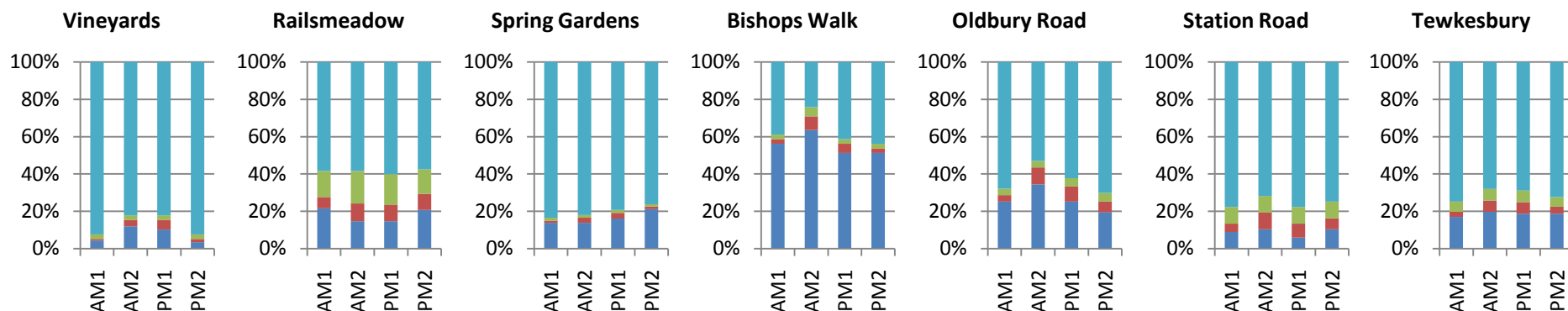
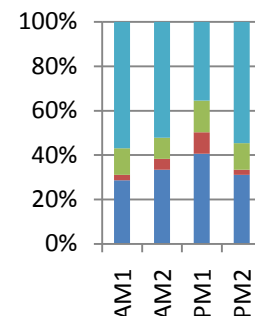
Key



Gloucester Rd

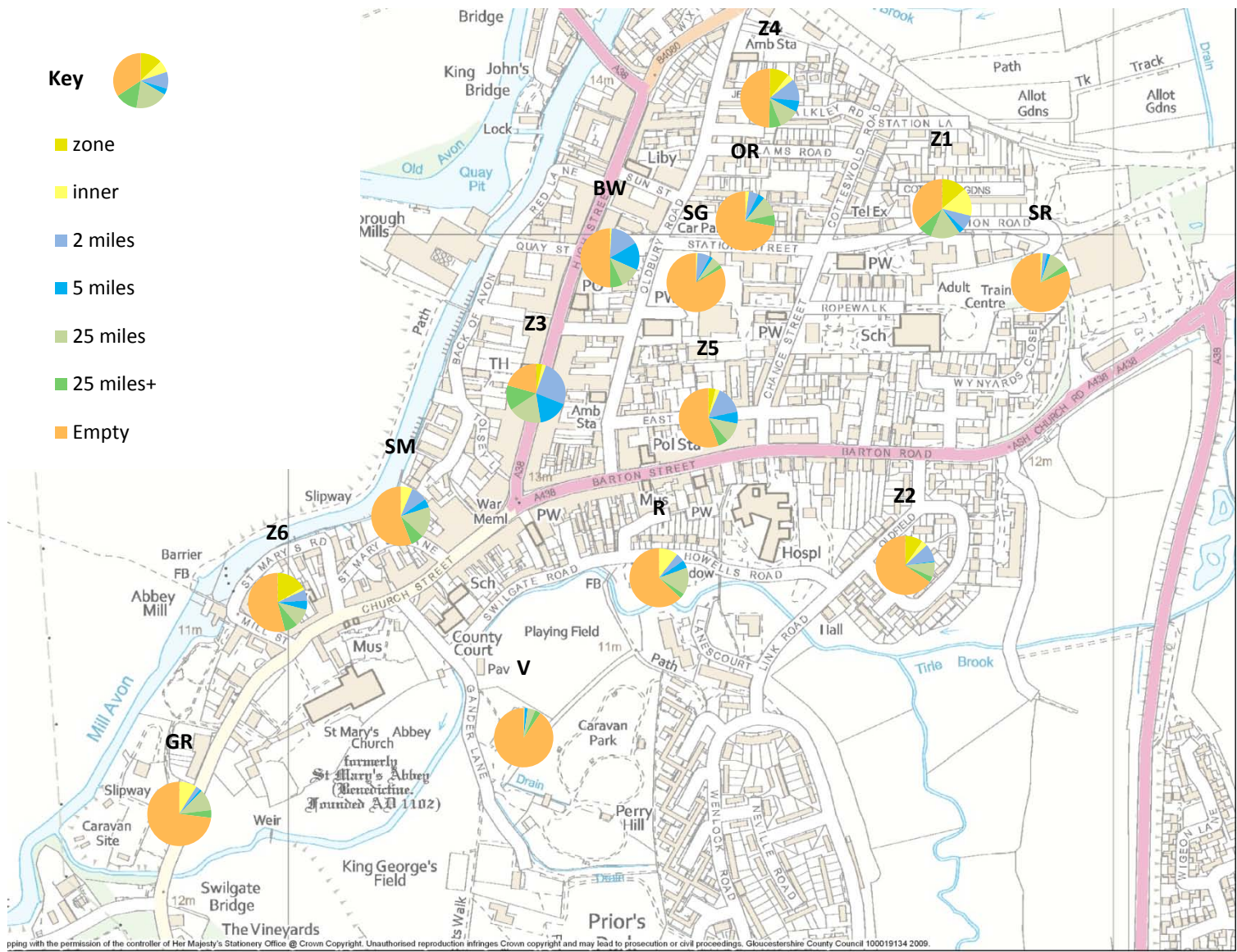


St Mary's



Parking Survey – Where did the parked vehicles come from? (Weekday average with capacity) 13

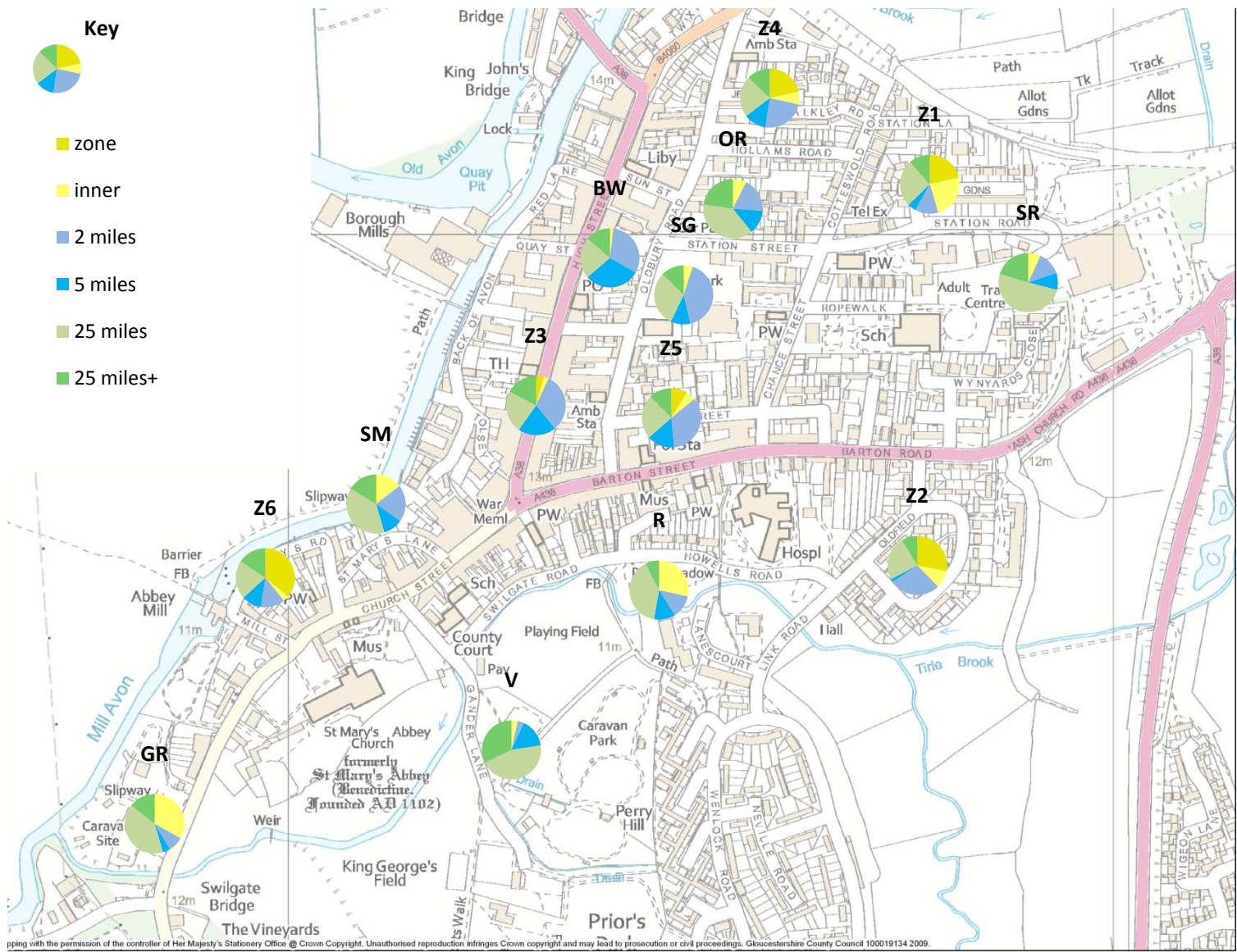
The maps below show where vehicles parked in each zone/car park came from. Vehicles have been categorised as originating from: the same zone; within the inner study area; within 2miles; within 5 miles; within 25 miles and over 25 miles from Tewkesbury. The map shows origin as a proportion of capacity.



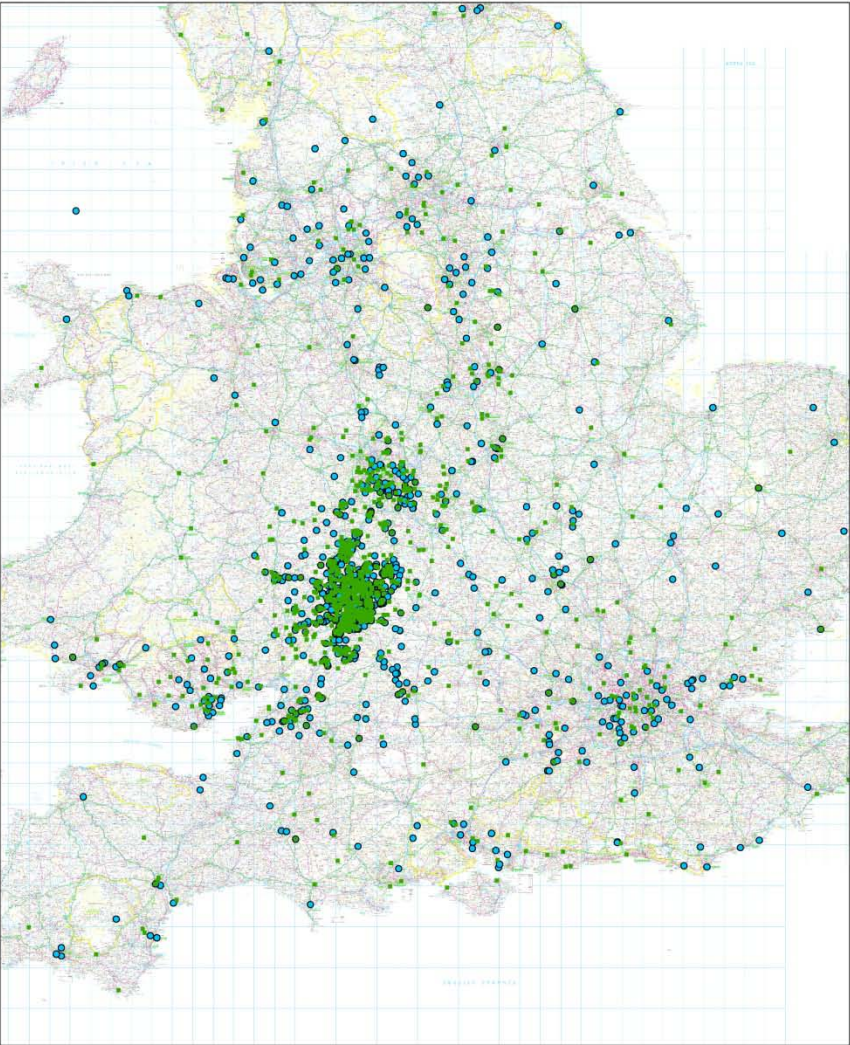
Mapping with the permission of the controller of Her Majesty's Stationery Office @ Crown Copyright. Unauthorised reproduction infringes Crown copyright and may lead to prosecution or civil proceedings. Gloucestershire County Council 100019134 2009.

Parking Survey – Where did the parked vehicles come from? (Weekday average origin only)

The maps below show where vehicles parked in each zone/car park came from. Vehicles have been categorised as originating from: the same zone; within the Inner study area; within 2miles; within 5 miles; within 25 miles and over 25 miles from Tewkesbury. The map shows the proportion of the origin locations.



Mapping with the permission of the controller of Her Majesty's Stationery Office @ Crown Copyright. Unauthorised reproduction infringes Crown copyright and may lead to prosecution or civil proceedings. Gloucestershire County Council 100019134 2009.



**Tewkesbury ANPR
Survey Zones**

The map shows combined origin locations
of both long and short stay parking both
on-street and off-street to a distance of
200 miles

Legend

- ORIGIN_Car Parks
- ORIGIN_Zones

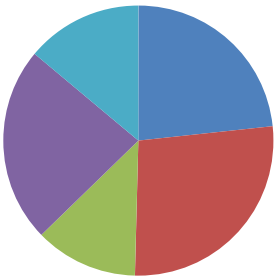
Scale:
Do Not Scale

Date:
Apr 12

Produced By:
KM

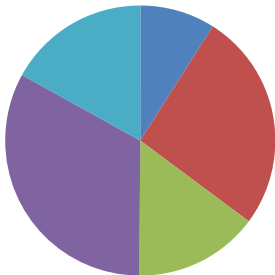
Drawing No:
Tw_ComLS-SS_200mile_2

On Street Short-Stay Parking



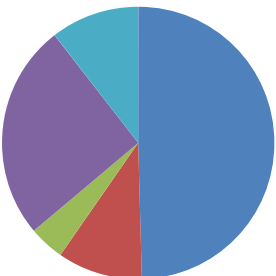
- From within inner
Tewkesbury
- From within 2
miles
- From Within 5
miles
- From Within 25
miles
- From over 25
miles

Off Street Short-Stay Parking



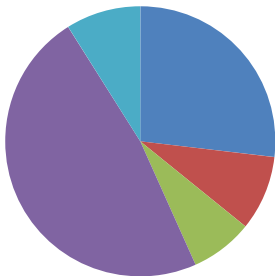
- From within inner
Tewkesbury
- From within 2
miles
- From Within 5
miles
- From Within 25
miles
- From over 25
miles

On Street Long-Stay Parking



- From within inner
Tewkesbury
- From within 2
miles
- From Within 5
miles
- From Within 25
miles
- From over 25 miles

Off Street Long-Stay Parking



- From within inner
Tewkesbury
- From within 2
miles
- From Within 5
miles
- From Within 25
miles
- From over 25
miles

The origin data shows that, on a typical weekday, approximately half of on-street parking capacity is occupied by locally registered vehicles, although within the town centre (Zone 3) it is less. Therefore much of the parking pressure experienced is due to local vehicles.

57% of vehicles have an origin within 5 miles of the survey area, many of these trips could be made by alternative modes. Therefore, management of on-street short stay parking to encourage visitors to use off-street parking, where there is spare capacity, is likely to have the greatest impact on on-street parking pressure.

86% of vehicles surveyed have an origin within 25 miles of the study area.

Tewkesbury ANPR Survey Zones

The map shows combined origin locations of long stay parking both on-street and off-street to a distance of 5 miles

Legend

ORIGIN_CP LS
CP_LONG

- 1.000000
- 1.000001 - 2.000000
- 2.000001 - 4.000000
- 4.000001 - 6.000000
- 6.000001 - 9.000000

ORIGIN_ZONE LS
Long_Z

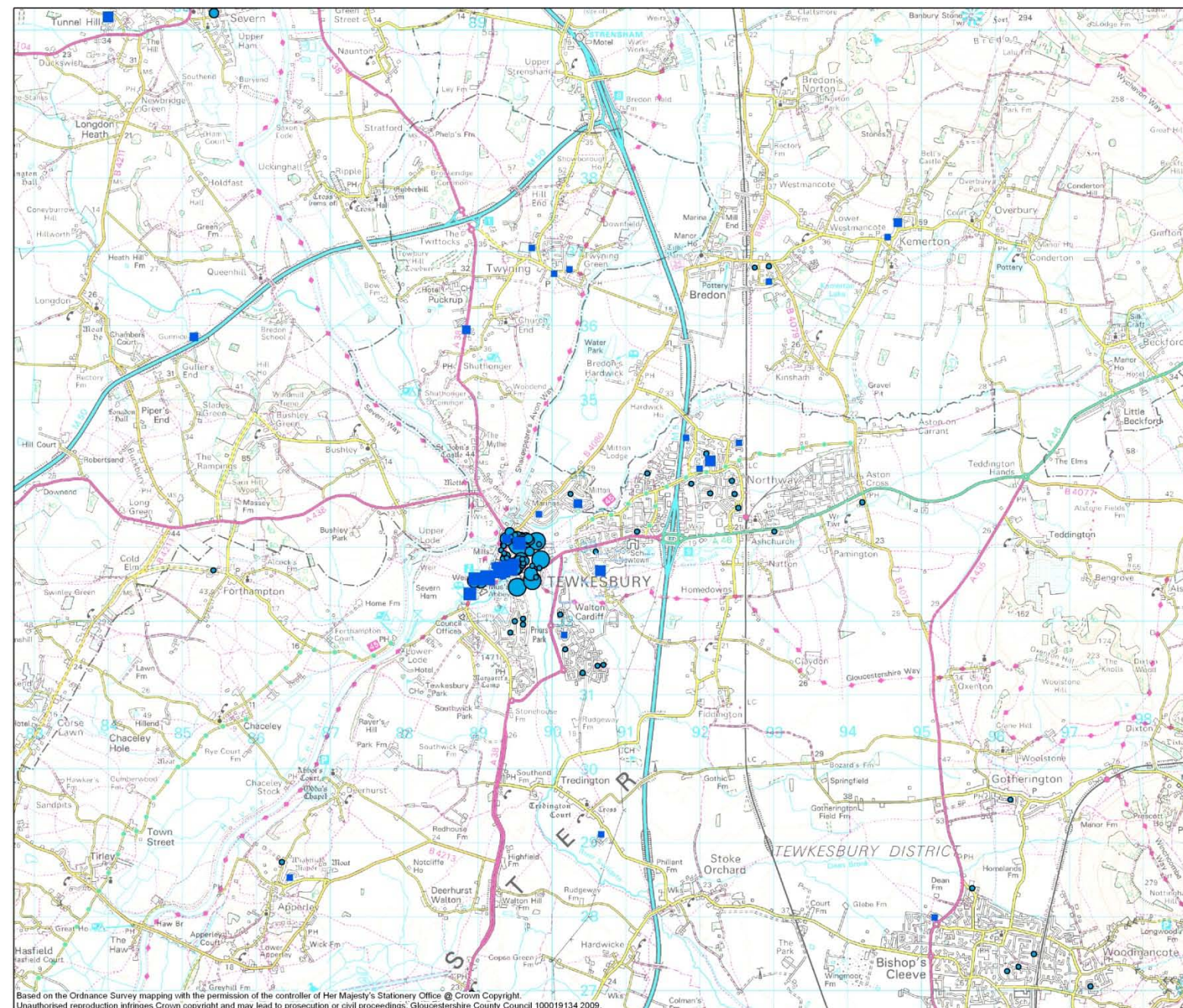
- 1.000000 - 2.000000
- 2.000001 - 5.000000
- 5.000001 - 9.000000
- 9.000001 - 18.000000
- 18.000001 - 36.000000

Scale:
Do Not Scale

Date:
Apr 12

Produced By:
KM

Drawing No:
Tw_Com_5mile_1



Tewkesbury ANPR Survey Zones

The map shows combined origin locations of long stay parking both on-street and off-street to a distance of 25 miles

Legend

ORIGIN_CP LS
CP_LONG

- 1.000000
- 1.000001 - 2.000000
- 2.000001 - 4.000000
- 4.000001 - 6.000000
- 6.000001 - 9.000000

ORIGIN_ZONE LS
Long_Z

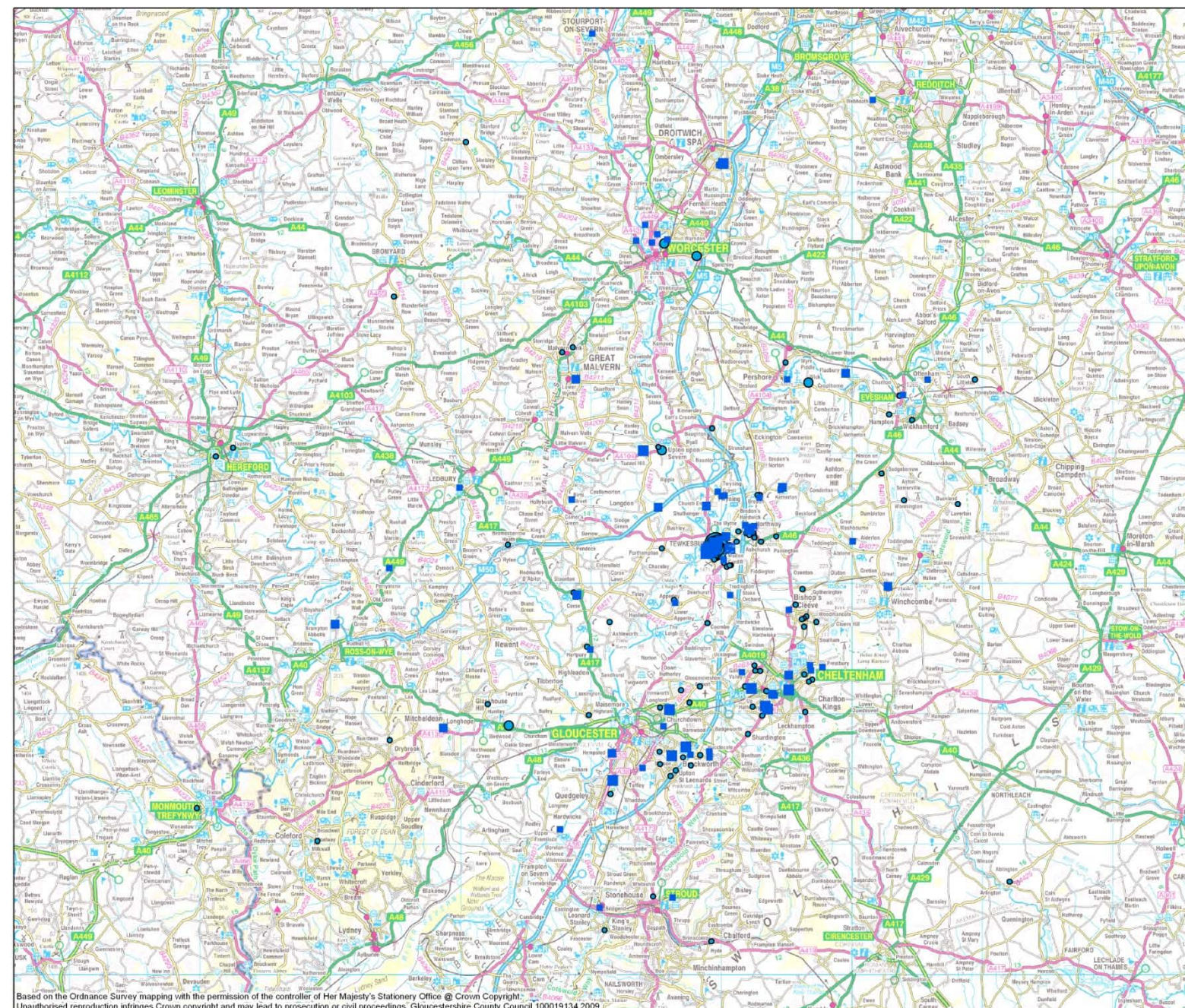
- 1.000000 - 2.000000
- 2.000001 - 5.000000
- 5.000001 - 9.000000
- 9.000001 - 18.000000
- 18.000001 - 36.000000

Scale:
Do Not Scale

Date:
Apr 12

Produced By:
KM

Drawing No:
Tw_Com_25mile_1



Tewkesbury ANPR Survey Zones

The map shows combined origin locations of short stay parking both on-street and off-street to a distance of 5 miles

Legend

ORIGIN_CP SS

SHORT

- 1.000000
- 1.000001 - 3.000000
- 3.000001 - 6.000000
- 6.000001 - 10.000000
- 10.000001 - 14.000000

ORIGIN_ZONE SS

SHORT_Z

- 1.000000 - 3.000000
- 3.000001 - 9.000000
- 9.000001 - 21.000000
- 21.000001 - 36.000000
- 36.000001 - 81.000000

Scale:
Do Not Scale

Date:
Apr 12

Produced By:
KM

Drawing No:
Tw_ComSS_5mile_2



Tewkesbury ANPR Survey Zones

The map shows combined origin locations of short stay parking both on-street and off-street to a distance of 25 miles

Legend

ORIGIN_CP SS

SHORT

- 1.000000
- 1.000001 - 3.000000
- 3.000001 - 6.000000
- 6.000001 - 10.000000
- 10.000001 - 14.000000

ORIGIN_ZONE SS

SHORT_Z

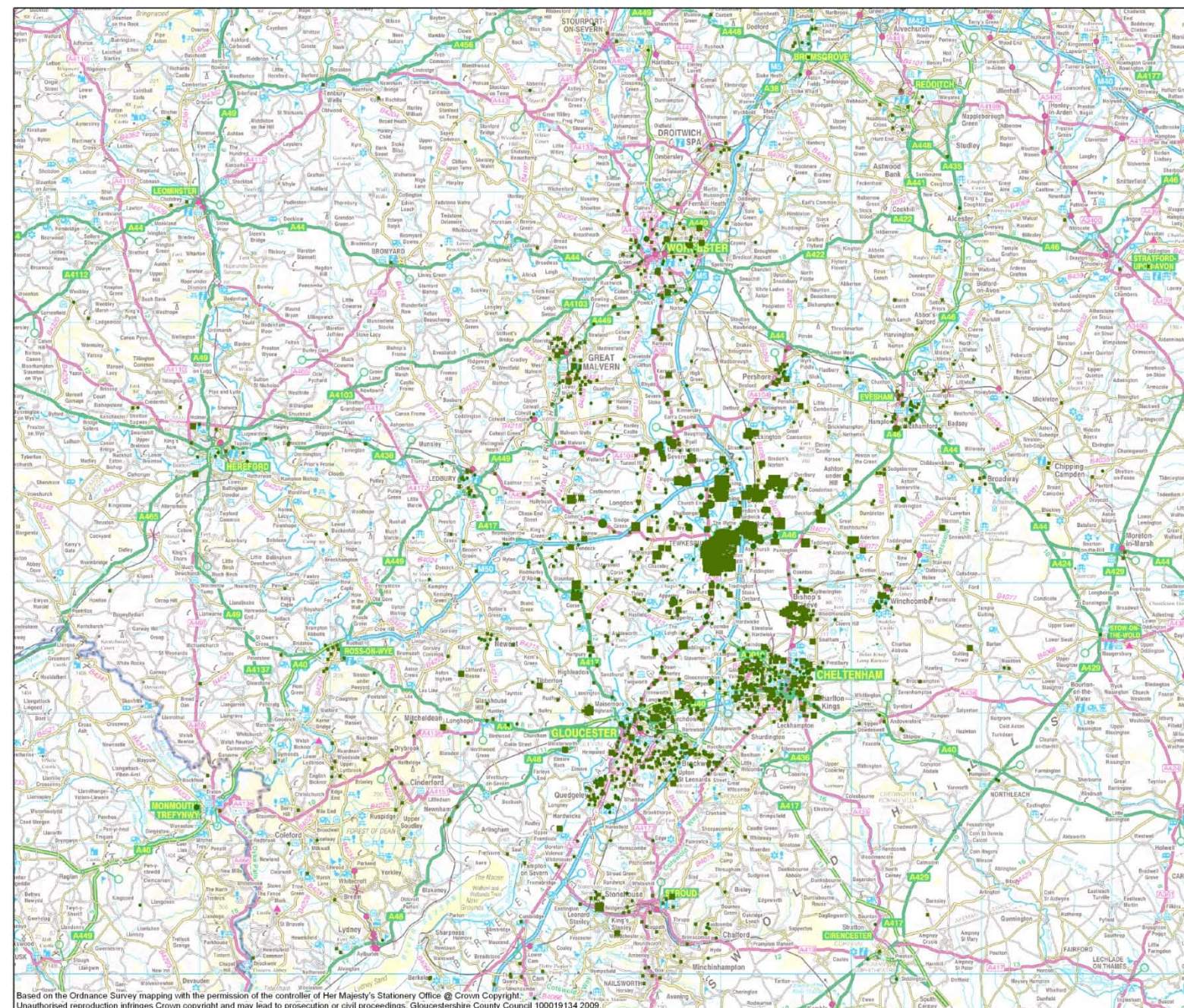
- 1.000000 - 3.000000
- 3.000001 - 9.000000
- 9.000001 - 21.000000
- 21.000001 - 36.000000
- 36.000001 - 81.000000

Scale:
Do Not Scale

Date:
Apr 12

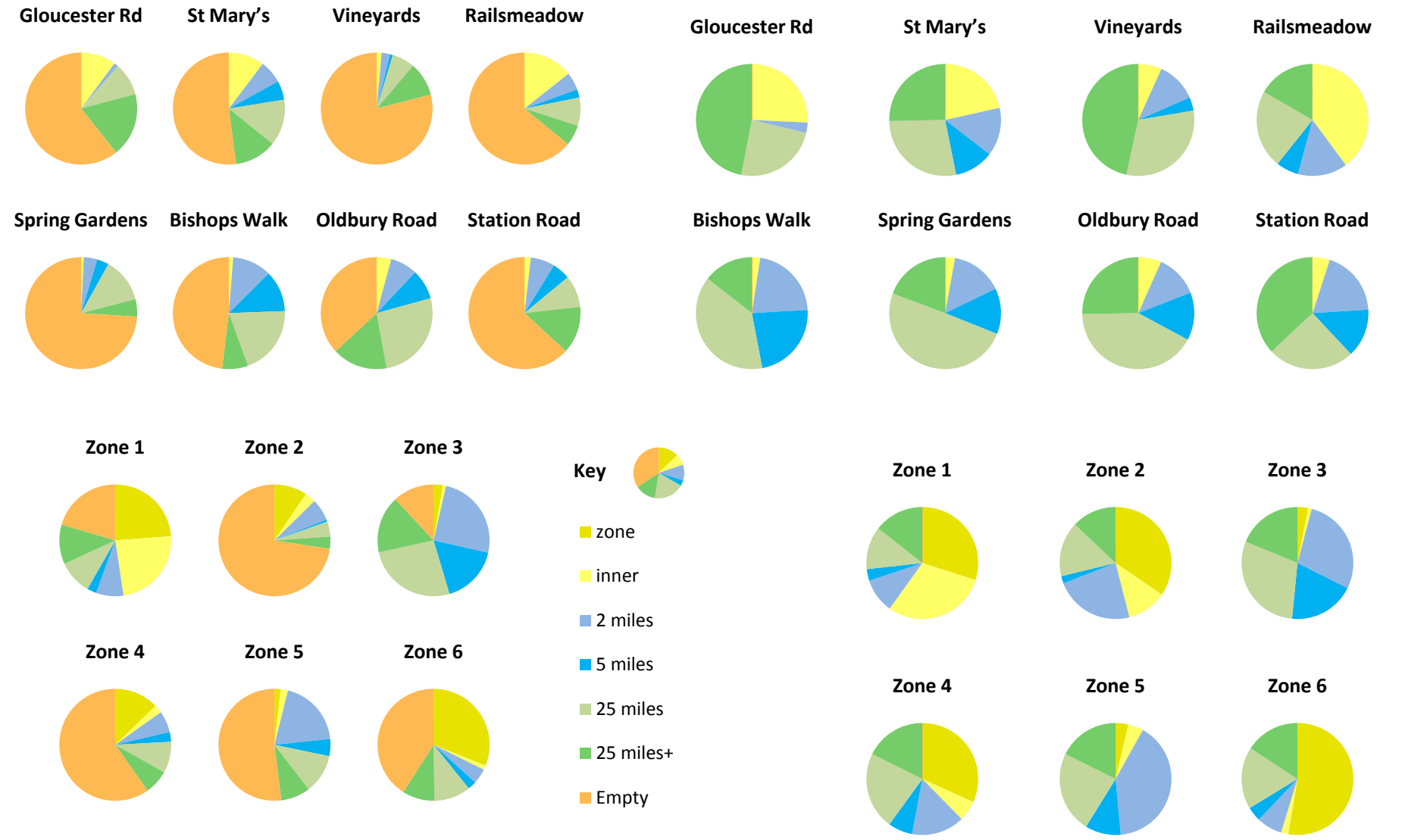
Produced By:
KM

Drawing No:
Tw_ComSS_25mile_2



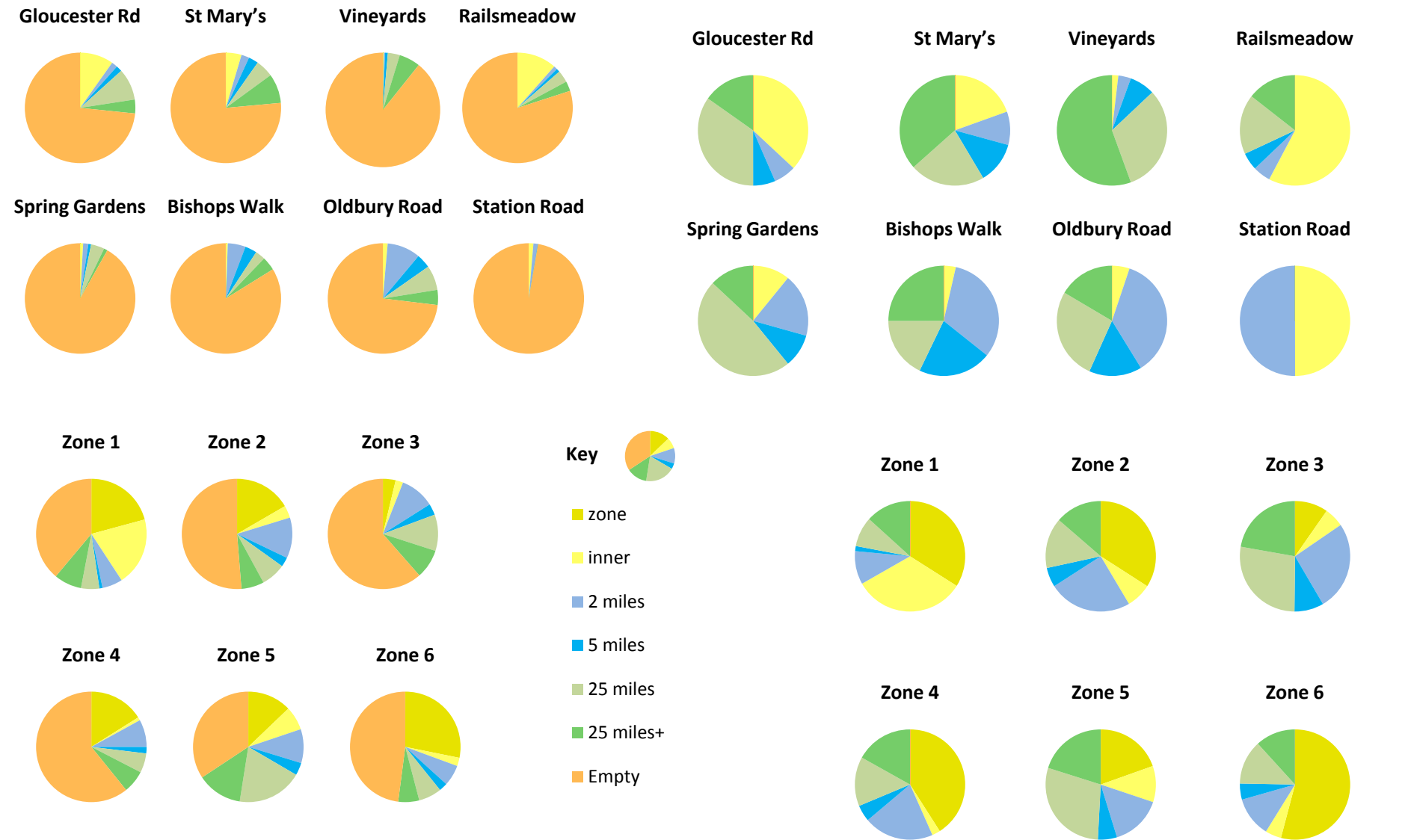
Parking Survey – Where did the parked vehicles come from, how many were parked, and for how long? (Saturday)

The graphs below show where vehicles parked in each zone/car park came from. Vehicles have been categorised as originating from: the same zone; within 2 miles, within 5 miles; within 25 miles and over 25 miles from Tewkesbury. The graphs on the left shows origin as a proportion of capacity. The graphs on the right shows the origins as a total proportion.



Parking Survey – Where did the parked vehicles come from, how many were parked, and for how long? (Sunday)

The graphs below show where vehicles parked in each zone/car park came from. Vehicles have been categorised as originating from: the same zone; within 2 miles, within 5 miles; within 25 miles and over 25 miles from Tewkesbury. The graphs on the left shows origin as a proportion of capacity. The graphs on the right shows the origins as a total proportion.



Key

zone

inner

2 miles

5 miles

25 miles

25 miles+

Empty

Zone 1

Zone 2

Zone 3

Zone 4

Zone 5

Zone 6