

Unemployment Bulletin

Issue 52 November 2012

Contents

Part 1: Summary

A summary of unemployment data at district, County, regional and national level

1

Part 2: County

Unemployment figures for the County compared to the South West and the rest of the UK

3

Part 3: Districts

A comparative break down of unemployment figures by district

4

Part 4: Wards

Further breakdown of unemployment figures by ward:

Cheltenham

6

Cotswolds

8

Forest of Dean

10

Gloucester

12

Stroud

14

Tewkesbury

16

Part 5: Map

Distribution of claimant rate across Gloucestershire

18

Part 6: Young People

Data about Young People Not in Education, Employment or Training (NEET)

20

INTRODUCTION

The Unemployment Bulletin provides a monthly update on unemployment data for Gloucestershire, the South West region and the United Kingdom. It is produced by the Strategic Needs Analysis Team in the County Council's Strategy and Challenge function. The data is sourced from the Office for National Statistics via Nomis (www.nomis.co.uk).

The claimant count measures the number of people claiming unemployment-related benefit (currently Job Seeker's allowance). The claimant rate is the number of claimants as a proportion of the working age population.

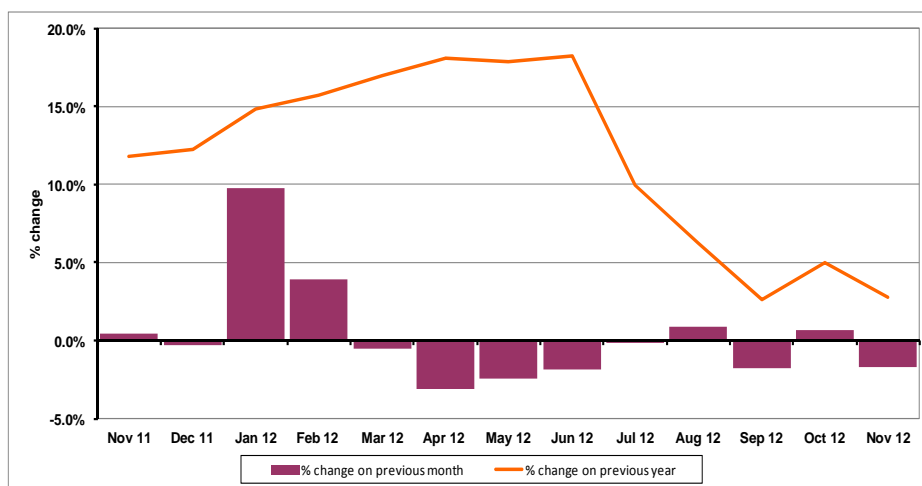
PART 1: SUMMARY

The claimant rate in Gloucestershire was 2.7% in November 2012. This was the same as the October 2012 figure. The South West rate and UK rate also remained the same as last month at 2.6% and 3.8% respectively. Gloucestershire's rate was 0.1% higher than the South West average of 2.6%, and 1.1% lower than the UK average of 3.8%.

The claimant count in Gloucestershire in November 2012 decreased by 171 people. The amount of people claiming in November 2012 was -1.7% lower than the number in October 2012. This compares to a 0.1% increase in the South West and a -0.8% decrease for the UK.

The year on year claimant count in Gloucestershire has decreased since last month. The count was 2.8% higher in November 2012 than at the same point in the previous year as shown in the graph below.

Gloucestershire claimants - Month on Month and Year on Year change: November 2011 to November 2012



Source: ONS Crown Copyright Reserved

Produced by:

Strategic Needs Analysis Team
Strategy and Challenge
Gloucestershire County Council
December 2012

DISTRICTS AT A GLANCE

At a glance unemployment information grouped by district. Includes:

Claim count: Total number of people claiming Job Seekers Allowance in November 2012

Compared to last month: How much larger/smaller October's claimant count is compared to October, expressed as a %

Claimant rate: The % of working population claiming Job Seekers Allowance in November 2012

Highest claiming ward: The ward with the highest claim count in that district and the rate

CHELTEMHAM BOROUGH

| | |
|-------------------------|---------------|
| Claim count: | 2,335 |
| Compared to last month: | -3.2% |
| Claimant rate: | 3.1% |
| Highest claiming ward | Oakley (6.7%) |

GLOUCESTER CITY

| | |
|-------------------------|-----------------------------|
| Claim count: | 3,120 |
| Compared to last month: | -0.4% |
| Claimant rate: | 4.1% |
| Highest claiming ward | Barton and Tredworth (8.6%) |

COTSWOLD DISTRICT

| | |
|-------------------------|------------------------------|
| Claim count: | 705 |
| Compared to last month: | +0.3% |
| Claimant rate: | 1.4% |
| Highest claiming ward | Cirencester Watermoor (3.7%) |

STROUD DISTRICT

| | |
|-------------------------|--------------|
| Claim count: | 1,510 |
| Compared to last month: | -1.7% |
| Claimant rate: | 2.2% |
| Highest claiming ward | Slade (6.2%) |

FOREST OF DEAN

| | |
|-------------------------|--|
| Claim count: | 1,287 |
| Compared to last month: | -1.5% |
| Claimant rate: | 2.5% |
| Highest claiming ward | Cinderford East and Cinderford West (5%) |

TEWKESBURY BOROUGH

| | |
|-------------------------|--------------------------------|
| Claim count: | 1,059 |
| Compared to last month: | -3.3% |
| Claimant rate: | 2.1% |
| Highest claiming ward | Tewkesbury Prior's Park (5.1%) |

YOUNG PEOPLE NOT IN EDUCATION, EMPLOYMENT OR TRAINING (NEET)

At the end of November 2012 there were 801 young people aged 16-18 not in education, employment or training in Gloucestershire and this figure translates into an adjusted (*) 16-18 NEET population of 5.2%.

PART 2: UK, SW AND GLOUCESTERSHIRE INDICATORS

The unemployment situation in Gloucestershire compared to the South West and the UK.

Claimant Rate

Figure 1: Claimant Rate for Gloucestershire, the South West and UK over the past year

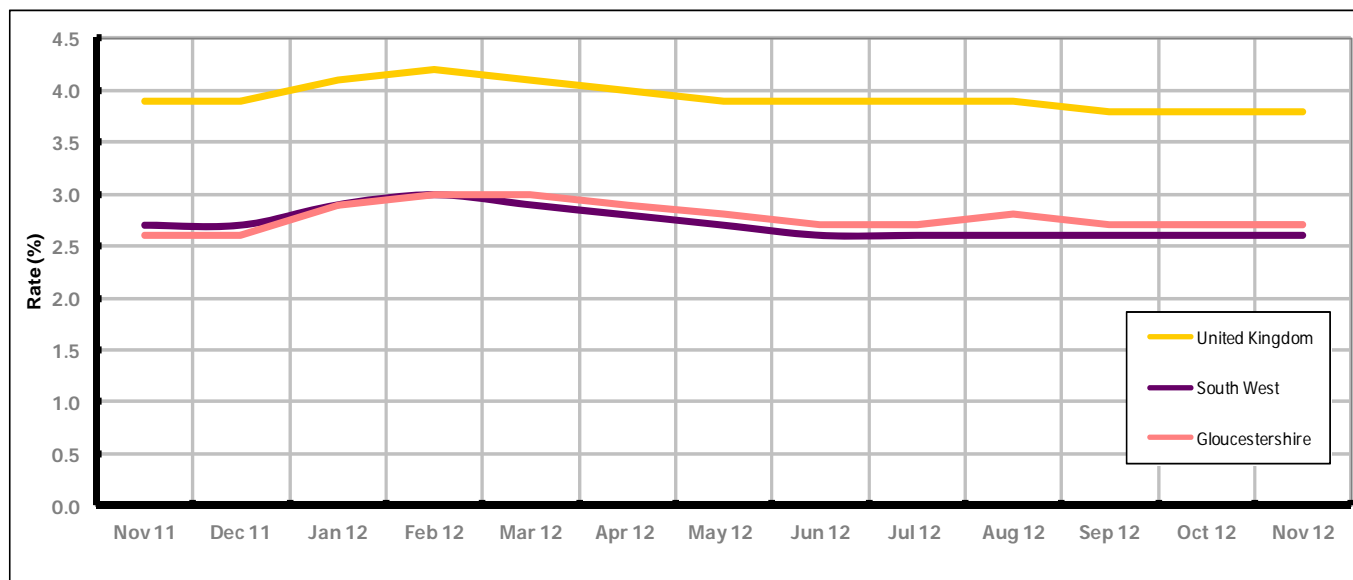


Figure 1 shows the claimant rate for Gloucestershire at 2.7% in November 2012. The rate remained lower or the same as the South West average, until March when it grew above the South West rate, it has been persistently lower by approximately 1.2% against the UK average during the same period. The November 2012 rate remained the same as last month..

Claimant Count

Table 1: Analysis of UK, South West and Gloucestershire Claimant Counts

| Area | Claimant Count in November 2012 | % change on October 2012 | Average % change over the last six months | Consecutive months decreasing |
|-----------------|---------------------------------|--------------------------|---|-------------------------------|
| UK | 1,534,984 | -0.8% | -0.3% | 4 |
| South West | 85,113 | +0.1% | -0.3% | 0 |
| Gloucestershire | 10,016 | -1.7% | -0.4% | 0 |

Table 1 shows that in November 2012, the number of claimants in Gloucestershire was -1.7% lower than the number in October 2012.

The average change in claimants in Gloucestershire for the six months to November 2012 was -0.4%. This is 0.1% higher than the South West and UK average.

PART 3: LOCAL AUTHORITY DISTRICT ANALYSIS

Claimant Rate and Claimant Count

Figure 2: Claimant Rate (%) across Gloucestershire - November 2012

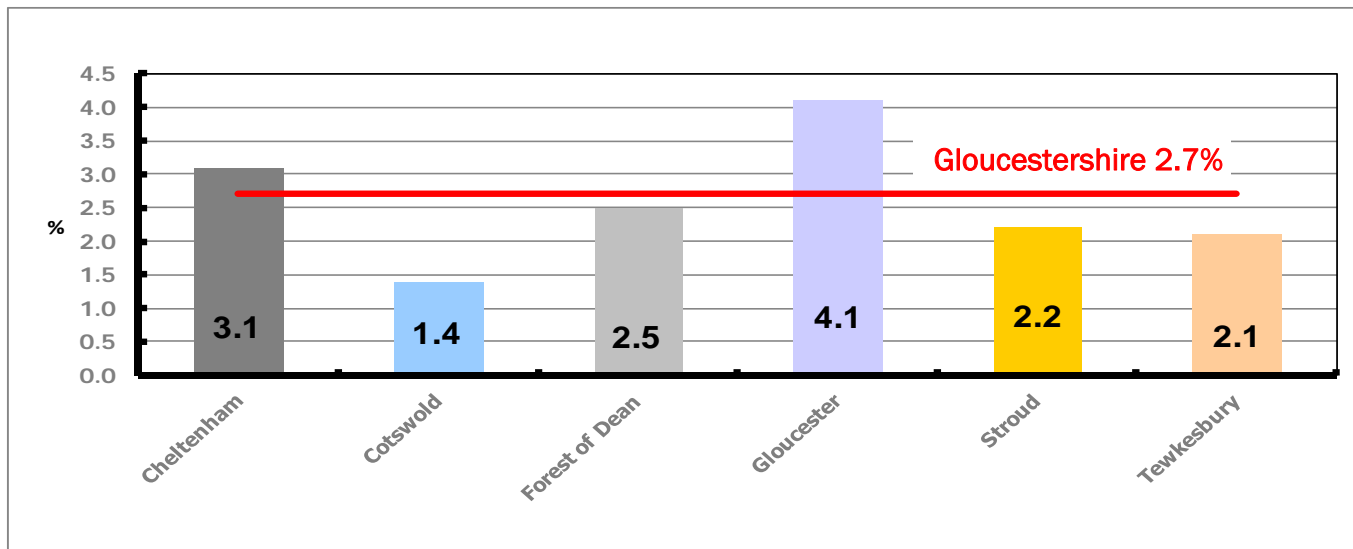


Figure 2 shows the claimant rate for November 2012 in Gloucestershire. Between October 2012 and November 2012 the rate in Cheltenham and Tewkesbury declined, while the other districts remained the same.

Figure 3: Total claimants over the past year across Gloucestershire Districts

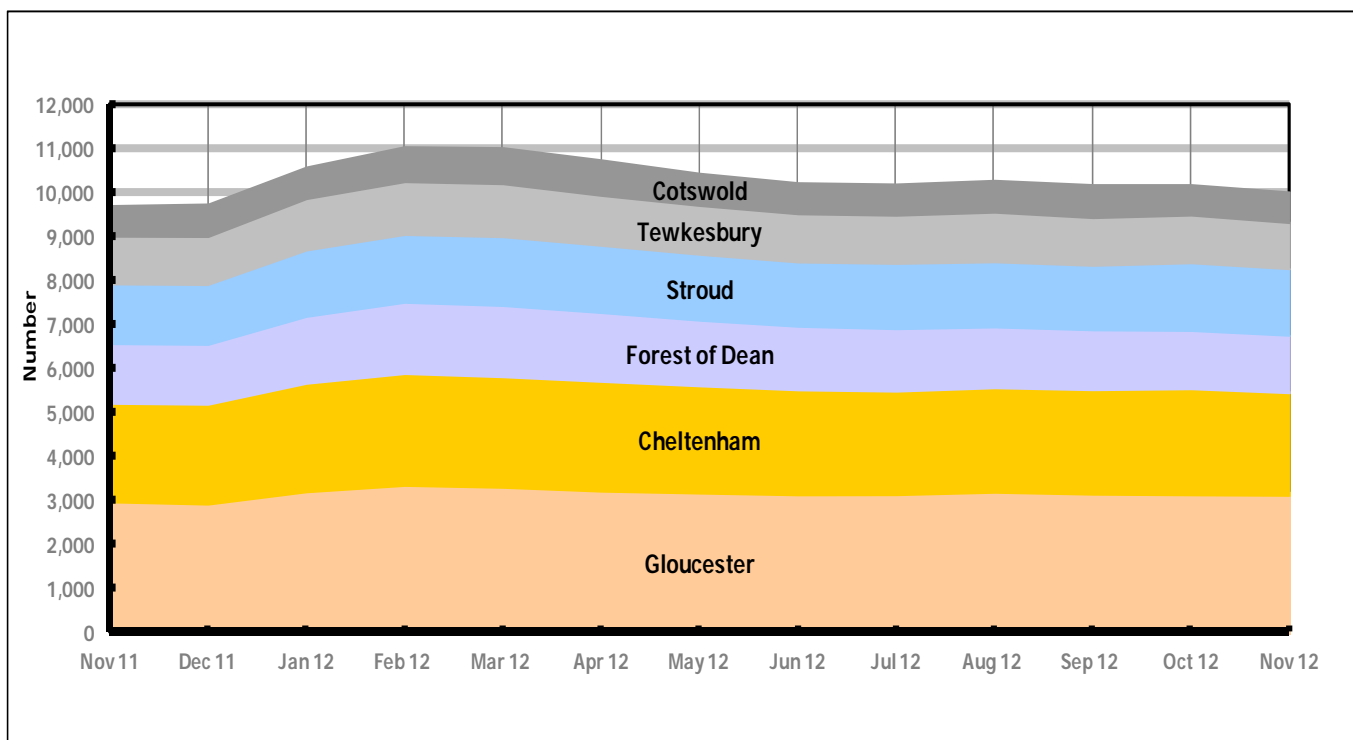


Figure 3 shows the overall claimant count by district over the past year. The number of claimants generally increased between November 2011 and February 2012. Since March 2012 the number of claimants has decreased, with the exception of August and October 2012, when they increased.

Table 2: Analysis of Gloucestershire and District Claimant Counts

| Total | Nov 12 Number | Nov 12 Rate | Oct 12 Number | Oct 12 Rate | Monthly change | % monthly change | Monthly change of rate |
|------------------------|------------------|----------------|------------------|----------------|-------------------|---------------------|---------------------------|
| Gloucestershire | 10,016 | 2.7 | 10,187 | 2.7 | -171 | -1.7% | 0.0 |
| Cheltenham | 2,335 | 3.1 | 2,413 | 3.2 | -78 | -3.2% | -0.1 |
| Cotswold | 705 | 1.4 | 703 | 1.4 | 2 | 0.3% | 0.0 |
| Forest of Dean | 1,287 | 2.5 | 1,307 | 2.5 | -20 | -1.5% | 0.0 |
| Gloucester | 3,120 | 4.1 | 3,133 | 4.1 | -13 | -0.4% | 0.0 |
| Stroud | 1,510 | 2.2 | 1,536 | 2.2 | -26 | -1.7% | 0.0 |
| Tewkesbury | 1,059 | 2.1 | 1,095 | 2.2 | -36 | -3.3% | -0.1 |

Table 2 shows the change in the claimant count in November 2012 compared to October 2012. Cotswold saw a small increase in the number of claimants, while the remaining districts experienced a decline.

Table 3: Analysis of Male Gloucestershire and District Claimant Counts

| Male | Nov 12 Number | Nov 12 Rate | Oct 12 Number | Oct 12 Rate | Monthly change | % monthly change | Monthly change of rate |
|------------------------|------------------|----------------|------------------|----------------|-------------------|---------------------|---------------------------|
| Gloucestershire | 6,610 | 3.5 | 6,677 | 3.6 | -67 | -1.0% | -0.1 |
| Cheltenham | 1,583 | 4.2 | 1,639 | 4.3 | -56 | -3.4% | -0.1 |
| Cotswold | 470 | 1.9 | 448 | 1.8 | 22 | 4.9% | 0.1 |
| Forest of Dean | 856 | 3.3 | 869 | 3.4 | -13 | -1.5% | -0.1 |
| Gloucester | 2,039 | 5.3 | 2,036 | 5.3 | 3 | 0.1% | 0.0 |
| Stroud | 987 | 2.9 | 989 | 2.9 | -2 | -0.2% | 0.0 |
| Tewkesbury | 675 | 2.7 | 696 | 2.8 | -21 | -3.0% | -0.1 |

Table 3 shows the change in the male claimant count in November 2012 compared to October 2012. Cotswold and Gloucester saw an increase in the number of male claimants, while the remaining districts experienced a decline.

Table 4: Analysis of Female Gloucestershire and District Claimant Counts

| Female | Nov 12 Number | Nov 12 Rate | Oct 12 Number | Oct 12 Rate | Monthly change | % monthly change | Monthly change of rate |
|------------------------|------------------|----------------|------------------|----------------|-------------------|---------------------|---------------------------|
| Gloucestershire | 3,406 | 1.8 | 3,510 | 1.9 | -104 | -3.0% | -0.1 |
| Cheltenham | 752 | 2.0 | 774 | 2.1 | -22 | -2.8% | -0.1 |
| Cotswold | 235 | 0.9 | 255 | 1.0 | -20 | -7.8% | -0.1 |
| Forest of Dean | 431 | 1.7 | 438 | 1.7 | -7 | -1.6% | 0.0 |
| Gloucester | 1,081 | 2.8 | 1,097 | 2.9 | -16 | -1.5% | -0.1 |
| Stroud | 523 | 1.5 | 547 | 1.6 | -24 | -4.4% | -0.1 |
| Tewkesbury | 384 | 1.5 | 399 | 1.6 | -15 | -3.8% | -0.1 |

Table 4 shows the change in the female claimant count in November 2012 compared to October 2012. All districts experienced an increase in the number of female claimants.

PART 4: LOCAL AUTHORITY DISTRICT AND WARD ANALYSIS

This section covers the six districts and a comparison of their constituent wards.

4.1 Cheltenham Borough

Claimant Rate and Claimant Count

Figure 4: Cheltenham Borough claimant rate over the last year

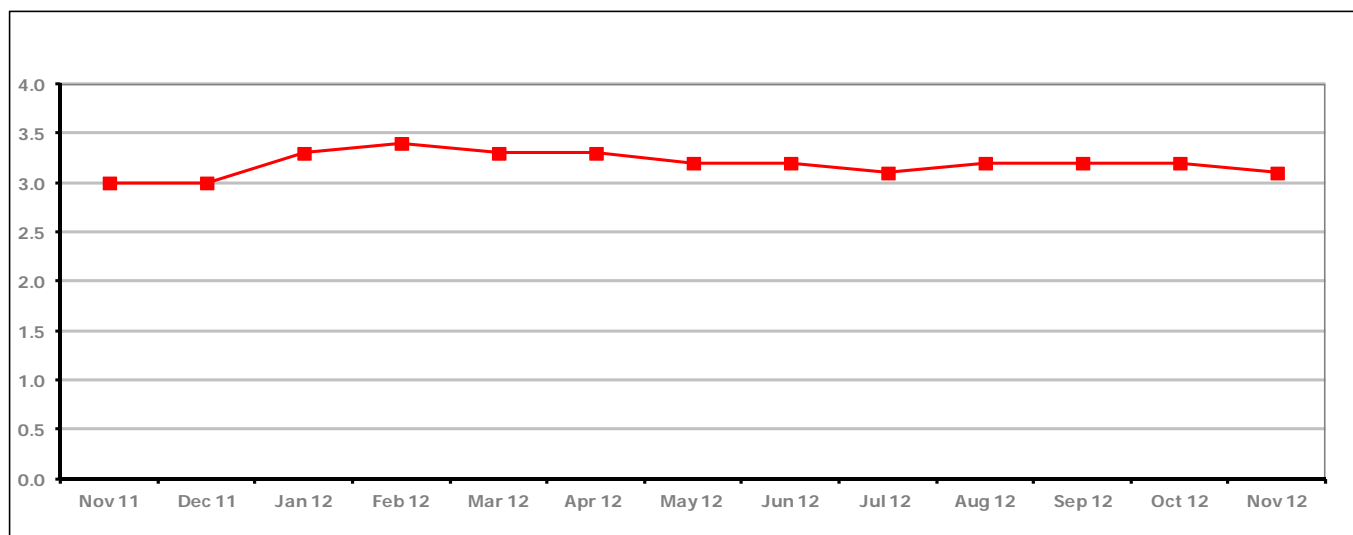


Figure 4 shows the claimant rate in Cheltenham decreased in November 2012 to 3.1%.

Figure 5: Cheltenham Borough claimants - Month on Month and Year on Year change

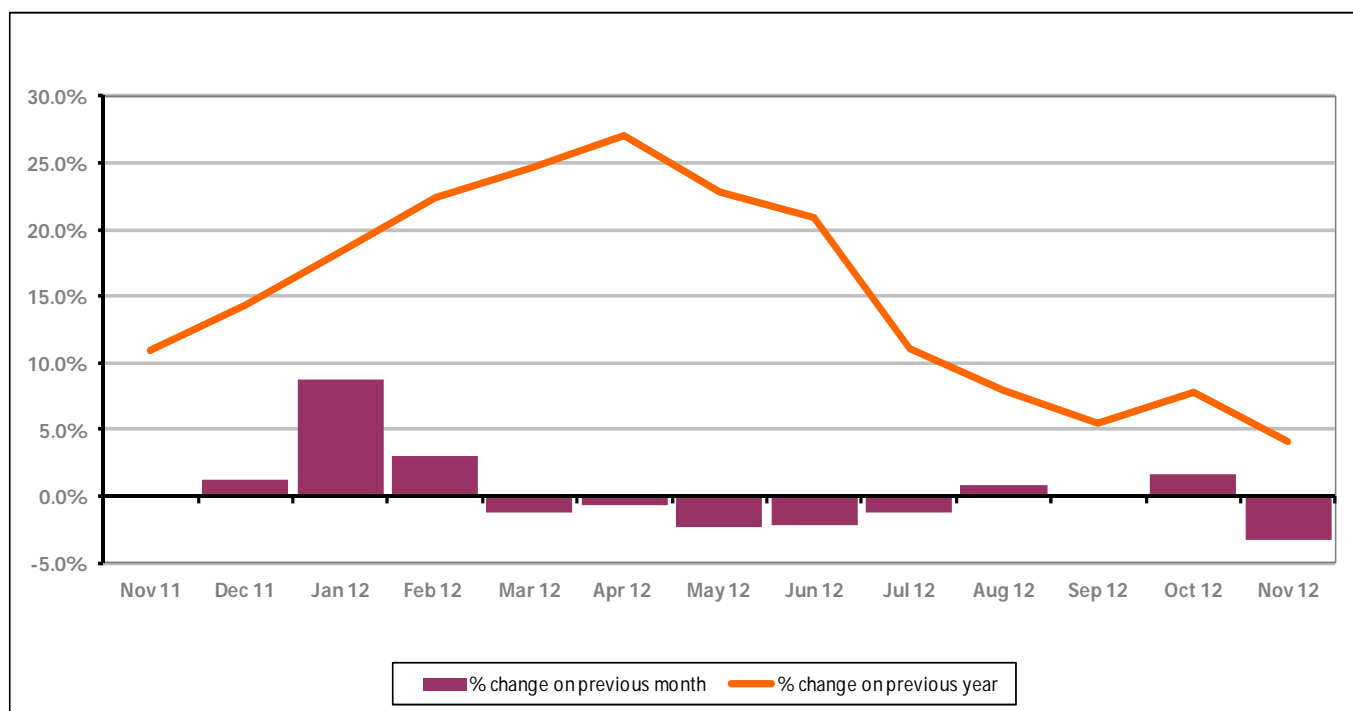


Figure 5 shows the claimant count decreased by -3.2% since last month. The change on the previous year has decreased in November 2012 compared to October 2012 to +4.1%.

PART 4: LOCAL AUTHORITY DISTRICT AND WARD ANALYSIS

4.1 Cheltenham Borough continued...

Figure 6: Claimant rates across Cheltenham Borough wards - November 2012

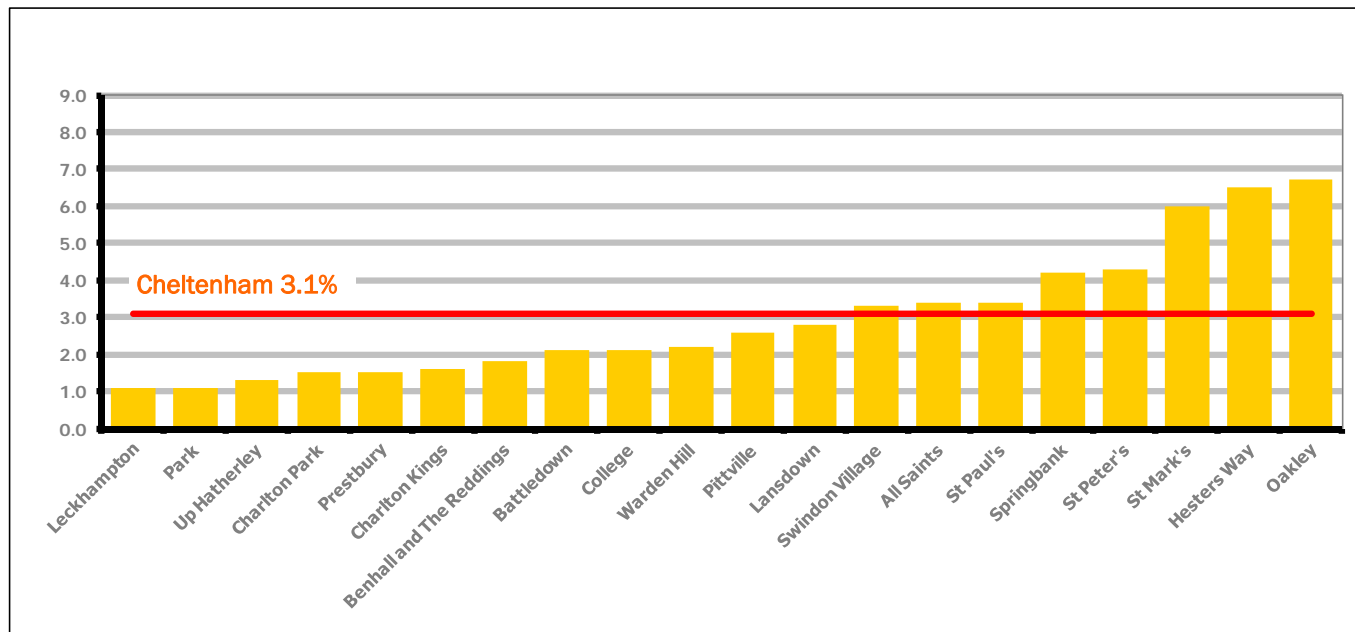
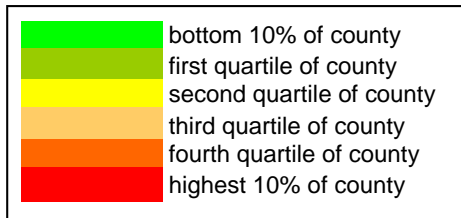


Figure 6 shows the claimant rates for Cheltenham Borough wards. The red line represents the average claimant rate across the Borough of 3.1%. Eight wards lie above the average.

Table 5: Analysis of Claimant Count at Cheltenham Borough ward level - November 2012

| District | Ward | Rate | Rank* |
|------------|--------------------------|------|-------|
| Cheltenham | Leckhampton | 1.1 | 23 |
| Cheltenham | Park | 1.1 | 23 |
| Cheltenham | Up Hatherley | 1.3 | 38 |
| Cheltenham | Charlton Park | 1.5 | 53 |
| Cheltenham | Prestbury | 1.5 | 53 |
| Cheltenham | Charlton Kings | 1.6 | 64 |
| Cheltenham | Benhall and The Reddings | 1.8 | 73 |
| Cheltenham | Battledown | 2.1 | 81 |
| Cheltenham | College | 2.1 | 81 |
| Cheltenham | Warden Hill | 2.2 | 89 |
| Cheltenham | Pittville | 2.6 | 101 |
| Cheltenham | Lansdown | 2.8 | 103 |
| Cheltenham | Swindon Village | 3.3 | 116 |
| Cheltenham | All Saints | 3.4 | 119 |
| Cheltenham | St Paul's | 3.4 | 119 |
| Cheltenham | Springbank | 4.2 | 124 |
| Cheltenham | St Peter's | 4.3 | 125 |
| Cheltenham | St Mark's | 6.0 | 135 |
| Cheltenham | Hesters Way | 6.5 | 138 |
| Cheltenham | Oakley | 6.7 | 140 |



* 1 = "best" and 142 = "worst"

Table 5 shows overall claimant rates for Cheltenham Borough wards and their position relative to all wards in Gloucestershire.

PART 4: LOCAL AUTHORITY DISTRICT AND WARD ANALYSIS

4.2 Cotswold District

Claimant Rate and Claimant Count

Figure 7: Cotswold District claimant rate over the last year

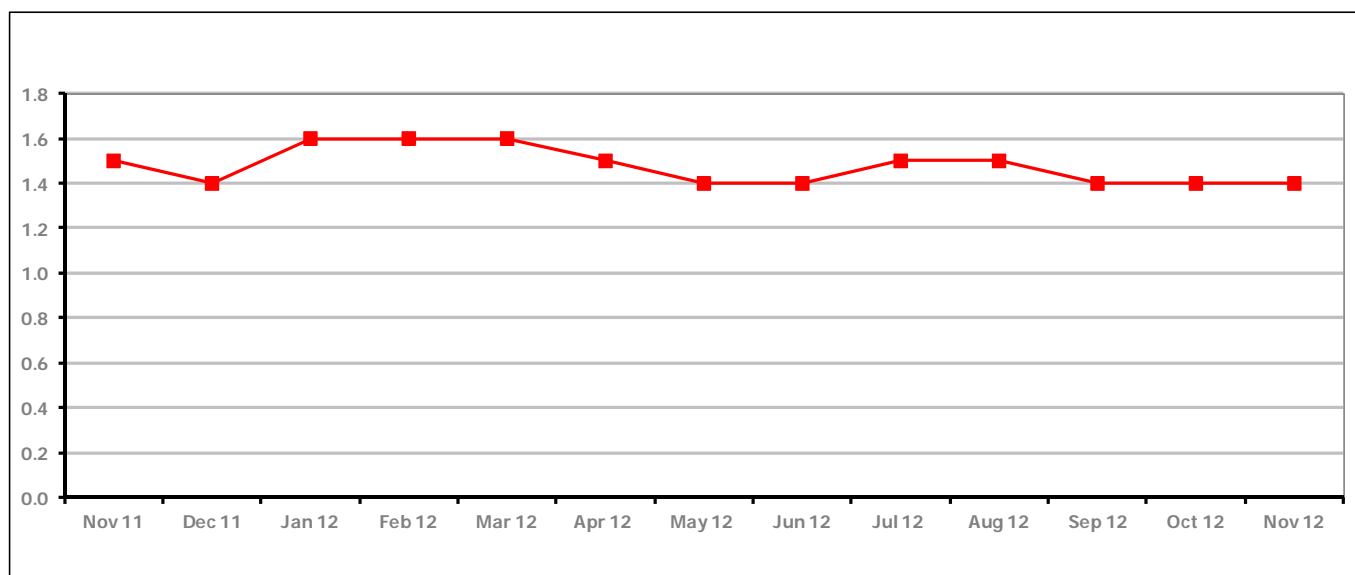


Figure 7 shows the claimant rate in Cotswold District remained the same as the last two months at 1.4%

Figure 8: Cotswold District claimants - Month on Month and Year on Year change

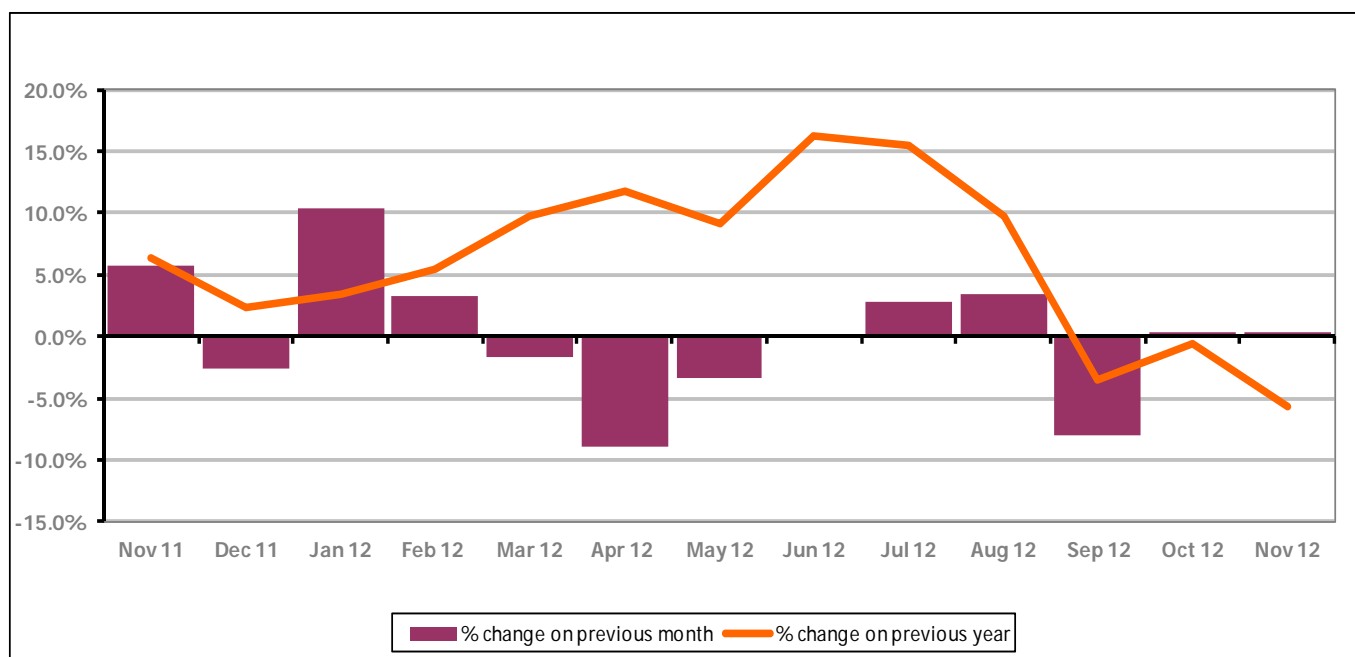


Figure 8 shows the claimant count increased by +0.3% since October 2012. The change on the previous year has decreased from October 2012 compared to November 2012 to -5.7%.

PART 4: LOCAL AUTHORITY DISTRICT AND WARD ANALYSIS

4.2 Cotswold District continued...

Figure 9: Claimant rates across Cotswold District wards - November 2012

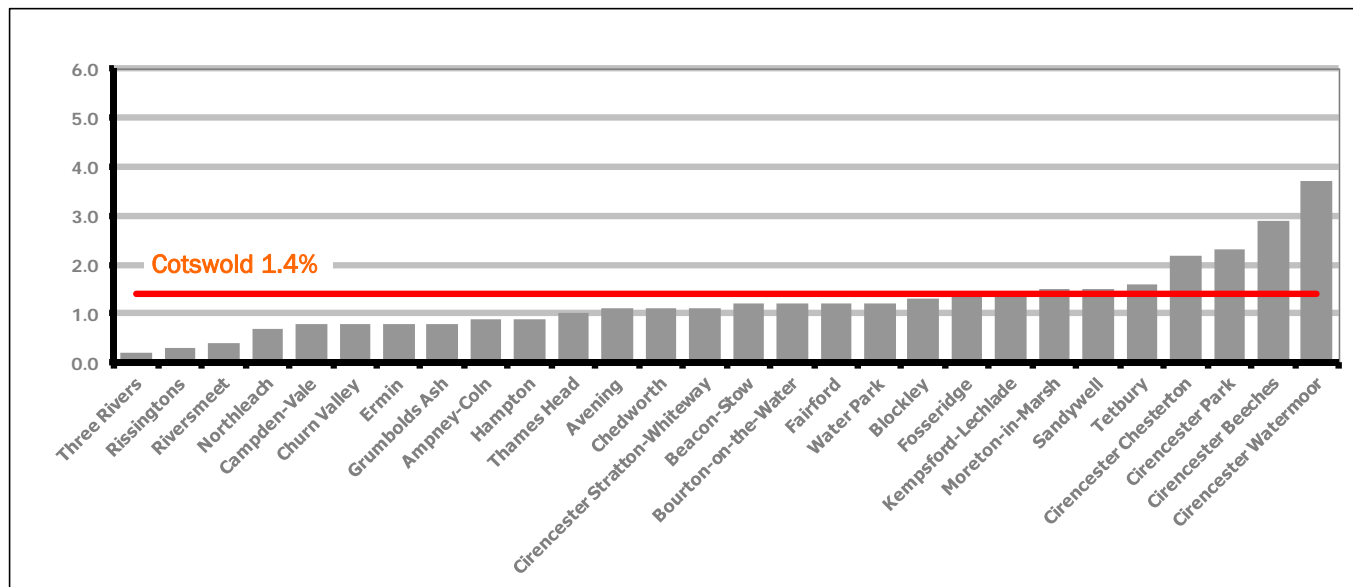
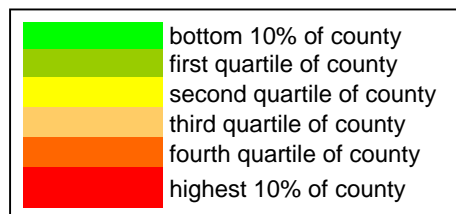


Figure 9 shows the claimant rates for Cotswold District wards. The red line represents the average claimant rate across the District of 1.4%. Seven wards lie above the average.

Table 6: Analysis of Claimant Count at Cotswold District ward level - November 2012

| District | Ward | Rate | Rank* |
|-----------|-------------------------------|------|-------|
| Cotswolds | Three Rivers | 0.2 | 1 |
| Cotswolds | Rissingtons | 0.3 | 2 |
| Cotswolds | Riversmeet | 0.4 | 3 |
| Cotswolds | Northleach | 0.7 | 7 |
| Cotswolds | Campden-Vale | 0.8 | 10 |
| Cotswolds | Churn Valley | 0.8 | 10 |
| Cotswolds | Ermin | 0.8 | 10 |
| Cotswolds | Grumbolds Ash | 0.8 | 10 |
| Cotswolds | Ampney-Coln | 0.9 | 15 |
| Cotswolds | Hampton | 0.9 | 15 |
| Cotswolds | Thames Head | 1.0 | 19 |
| Cotswolds | Avening | 1.1 | 23 |
| Cotswolds | Chedworth | 1.1 | 23 |
| Cotswolds | Cirencester Stratton-Whiteway | 1.1 | 23 |
| Cotswolds | Beacon-Stow | 1.2 | 31 |
| Cotswolds | Bourton-on-the-Water | 1.2 | 31 |
| Cotswolds | Fairford | 1.2 | 31 |
| Cotswolds | Water Park | 1.2 | 31 |
| Cotswolds | Blockley | 1.3 | 38 |
| Cotswolds | Fosseridge | 1.4 | 43 |
| Cotswolds | Kempsford-Lechlade | 1.4 | 43 |
| Cotswolds | Moreton-in-Marsh | 1.5 | 53 |
| Cotswolds | Sandywell | 1.5 | 53 |
| Cotswolds | Tetbury | 1.6 | 64 |
| Cotswolds | Cirencester Chesterton | 2.2 | 89 |
| Cotswolds | Cirencester Park | 2.3 | 94 |
| Cotswolds | Cirencester Beeches | 2.9 | 107 |
| Cotswolds | Cirencester Watermoor | 3.7 | 122 |



* 1 = "best" and 142 = "worst"

Table 6 shows overall claimant rates for Cotswold District wards and their position relative to all wards in Gloucestershire.

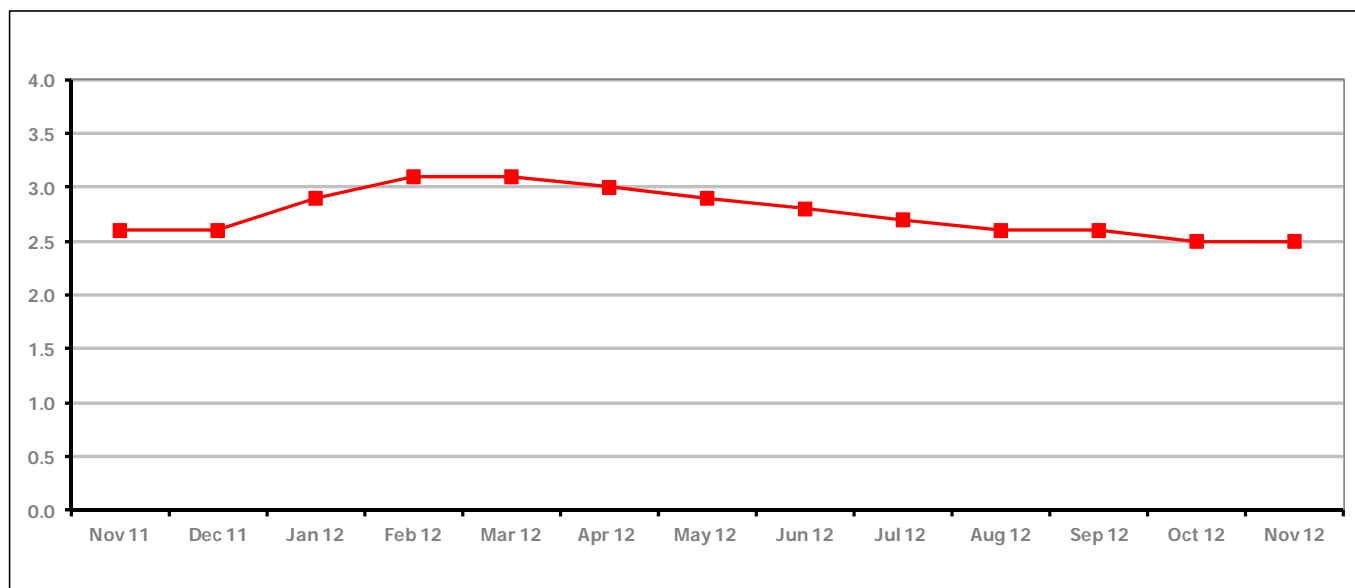
PART 4: LOCAL AUTHORITY DISTRICT AND WARD ANALYSIS**4.3 Forest of Dean District****Claimant Rate and Claimant Count**

Figure 10 shows the claimant rate in the Forest of Dean remained the same as last month at 2.5%

Figure 11: Forest of Dean District claimants - Month on Month and Year on Year change

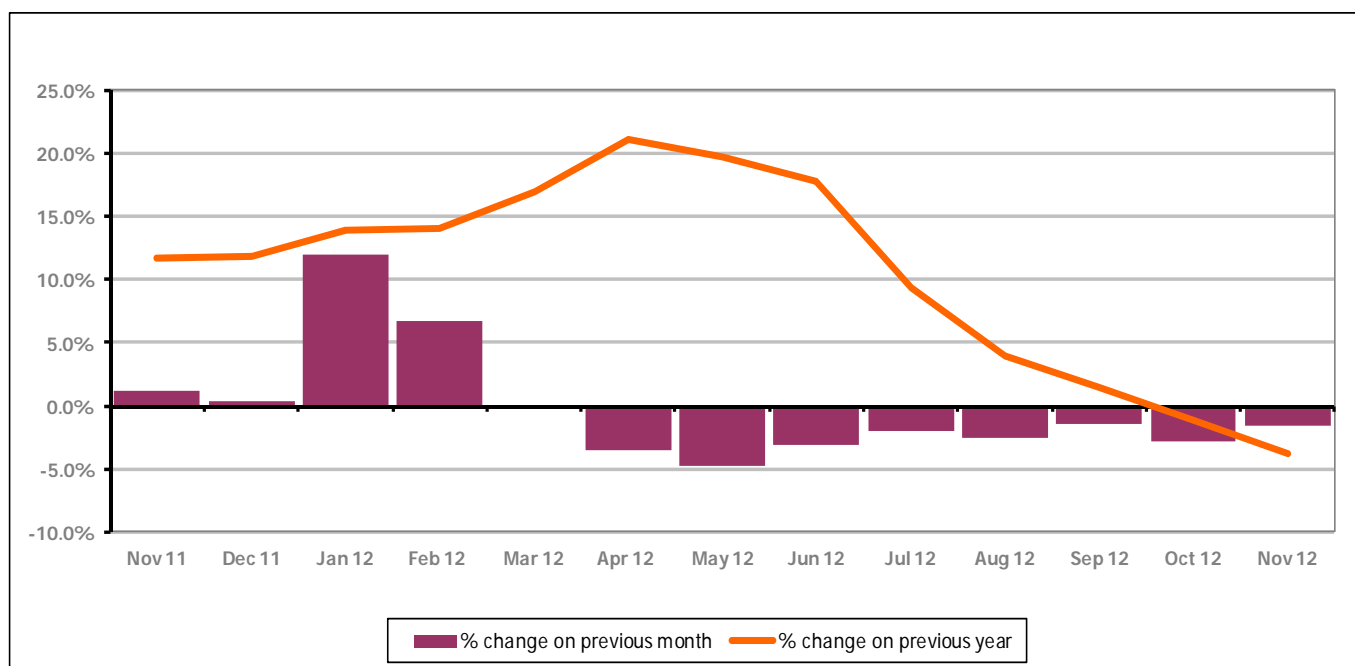


Figure 11 shows the claimant count decreased by -1.5% since October 2012. The change on the previous year has decreased from October 2012 compared to November 2012 to -3.8%.

PART 4: LOCAL AUTHORITY DISTRICT AND WARD ANALYSIS

4.3 Forest of Dean District continued...

Figure 12: Claimant rates across Forest of Dean District wards - November 2012

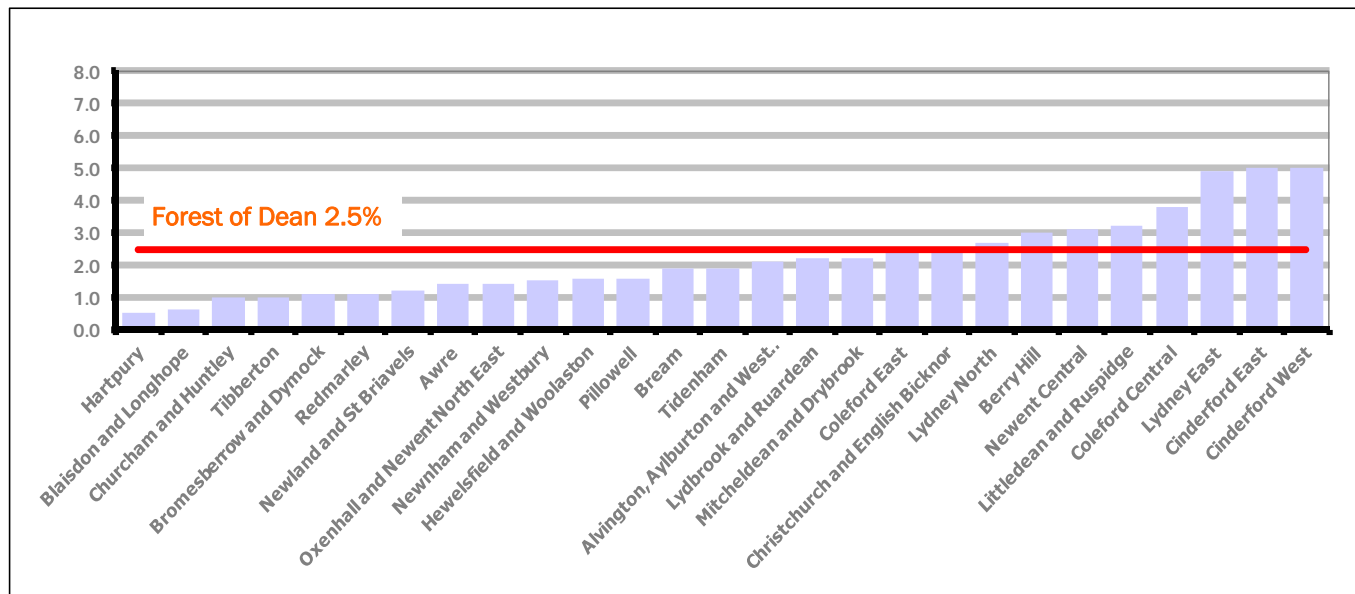
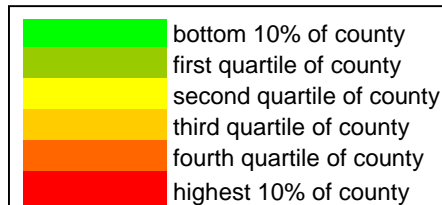


Figure 12 shows the claimant rates for Forest of Dean District wards. The red line represents the average claimant rate across the District of 2.5 %. Eight wards lie above the average.

Table 7: Analysis of Claimant Count at Forest of Dean District ward level - November 2012

| District | Ward | Rate | Rank* |
|----------|--------------------------------------|------|-------|
| Forest | Hartpury | 0.5 | 4 |
| Forest | Blaisdon and Longhope | 0.6 | 5 |
| Forest | Churcham and Huntley | 1.0 | 19 |
| Forest | Tibberton | 1.0 | 19 |
| Forest | Bromesberrow and Dymock | 1.1 | 23 |
| Forest | Redmarley | 1.1 | 23 |
| Forest | Newland and St Briavels | 1.2 | 31 |
| Forest | Awre | 1.4 | 43 |
| Forest | Oxenhall and Newent North East | 1.4 | 43 |
| Forest | Newnham and Westbury | 1.5 | 53 |
| Forest | Hewelsfield and Woolaston | 1.6 | 64 |
| Forest | Pillowell | 1.6 | 64 |
| Forest | Bream | 1.9 | 77 |
| Forest | Tidenham | 1.9 | 77 |
| Forest | Alvington, Aylburton and West Lydney | 2.1 | 81 |
| Forest | Lydbrook and Ruardean | 2.2 | 89 |
| Forest | Mitcheldean and Drybrook | 2.2 | 89 |
| Forest | Coleford East | 2.4 | 96 |
| Forest | Christchurch and English Bicknor | 2.5 | 97 |
| Forest | Lydney North | 2.7 | 102 |
| Forest | Berry Hill | 3.0 | 110 |
| Forest | Newent Central | 3.1 | 112 |
| Forest | Littledean and Ruspidge | 3.2 | 113 |
| Forest | Coleford Central | 3.8 | 123 |
| Forest | Lydney East | 4.9 | 127 |
| Forest | Cinderford East | 5.0 | 129 |
| Forest | Cinderford West | 5.0 | 129 |



* 1 = "best" and 142 = "worst"

Table 7 shows overall claimant rates for the Forest of Dean District wards and their position relative to all wards in Gloucestershire.

PART 4: LOCAL AUTHORITY DISTRICT AND WARD ANALYSIS

4.4 Gloucester City

Claimant Rate and Claimant Count

Figure 13: Gloucester City claimant rate over the last year

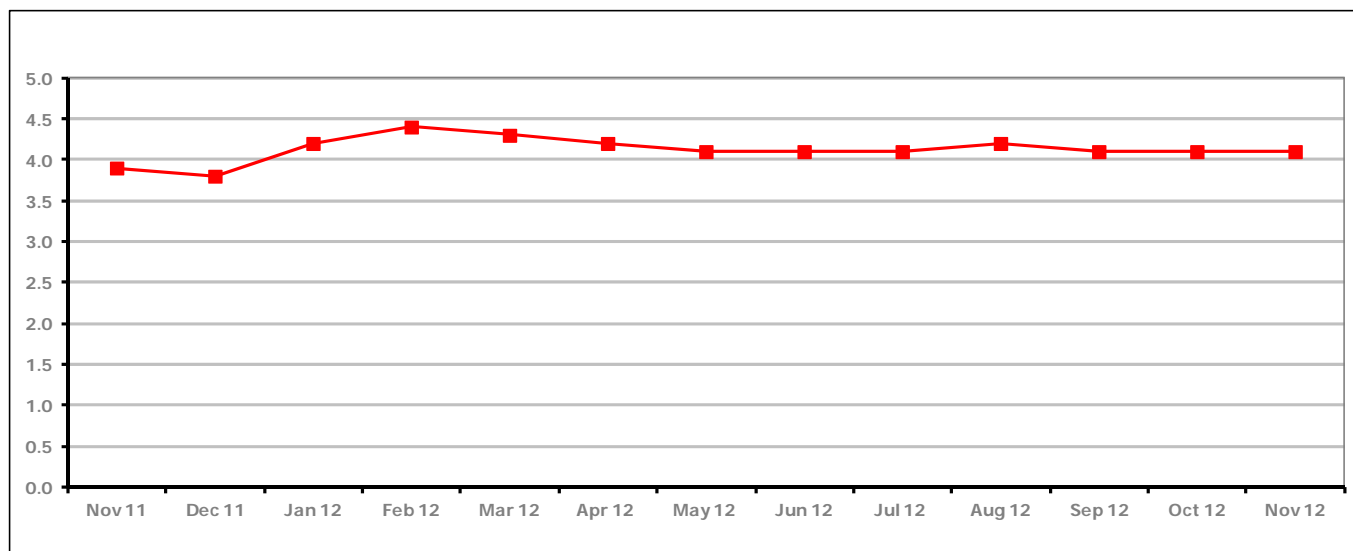


Figure 13 shows the claimant rate for Gloucester City remained the last two months at 4.1%.

Figure 14: Gloucester City claimants - Month on Month and Year on Year change

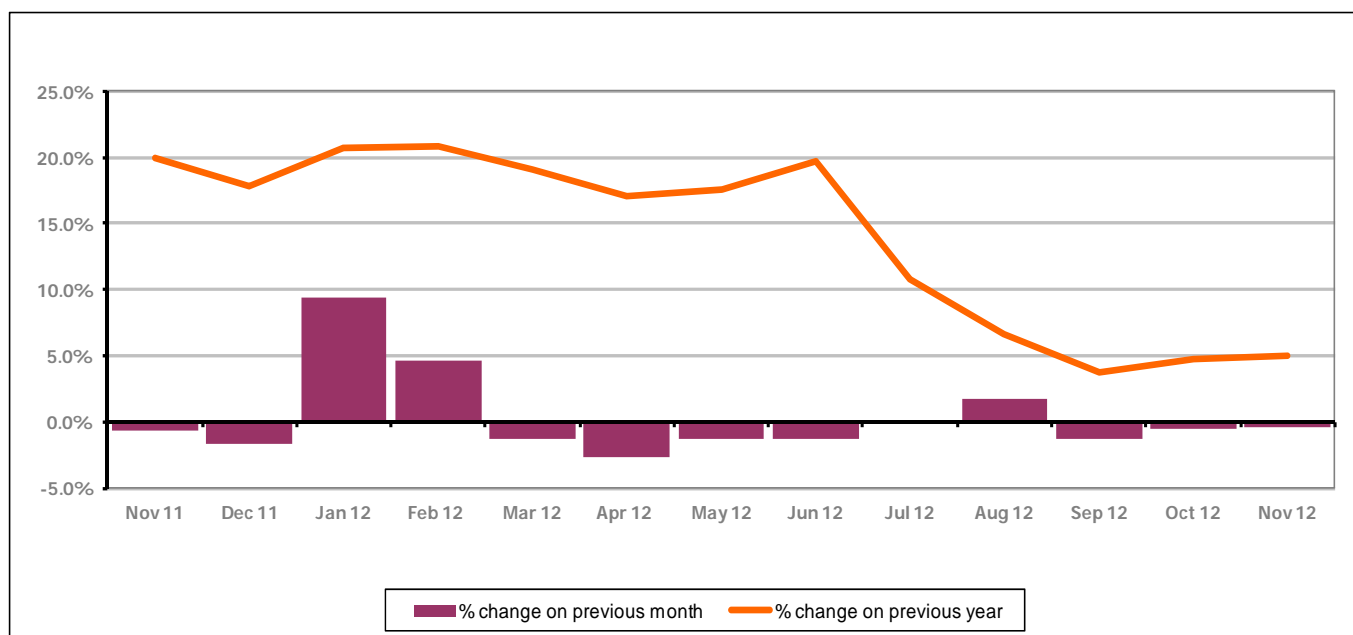


Figure 14 shows the monthly claimant count decreased by -0.4% since October 2012. The change on the previous year has increased from October 2012 compared to November 2012 to +4.9%.

PART 4: LOCAL AUTHORITY DISTRICT AND WARD ANALYSIS

4.4 Gloucester City continued...

Figure 15: Claimant rates across Gloucester City wards - November 2012

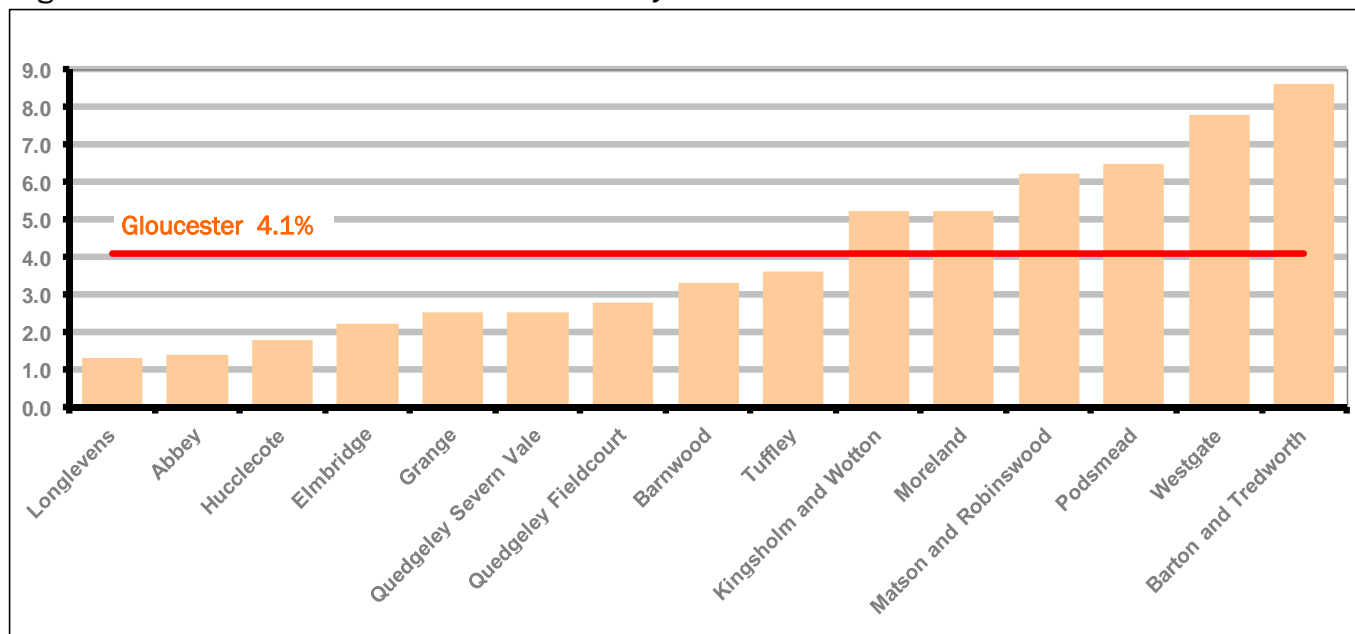
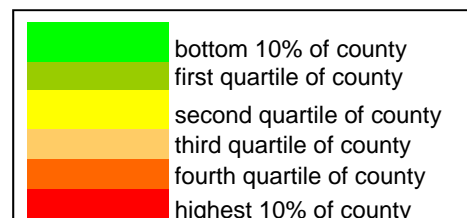


Figure 15 shows the claimant rates for Gloucester City district wards. The red line represents the average claimant rate across the City of 4.1%. Six wards lie above the average.

Table 8: Analysis of Claimant Count at Gloucester City ward level - November 2012

| District | Ward | Rate | Rank* |
|------------|-----------------------|------|-------|
| Gloucester | Longlevens | 1.3 | 38 |
| Gloucester | Abbey | 1.4 | 43 |
| Gloucester | Hucclecote | 1.8 | 73 |
| Gloucester | Elmbridge | 2.2 | 89 |
| Gloucester | Grange | 2.5 | 97 |
| Gloucester | Quedgeley Severn Vale | 2.5 | 97 |
| Gloucester | Quedgeley Fieldcourt | 2.8 | 103 |
| Gloucester | Barnwood | 3.3 | 116 |
| Gloucester | Tuffley | 3.6 | 121 |
| Gloucester | Kingsholm and Wotton | 5.2 | 133 |
| Gloucester | Moreland | 5.2 | 133 |
| Gloucester | Matson and Robinswood | 6.2 | 136 |
| Gloucester | Podsmead | 6.5 | 138 |
| Gloucester | Westgate | 7.8 | 141 |
| Gloucester | Barton and Tredworth | 8.6 | 142 |



* 1 = "best" and 142 = "worst"

Table 8 shows overall claimant rates for Gloucester City wards and their position relative to all wards in Gloucestershire.

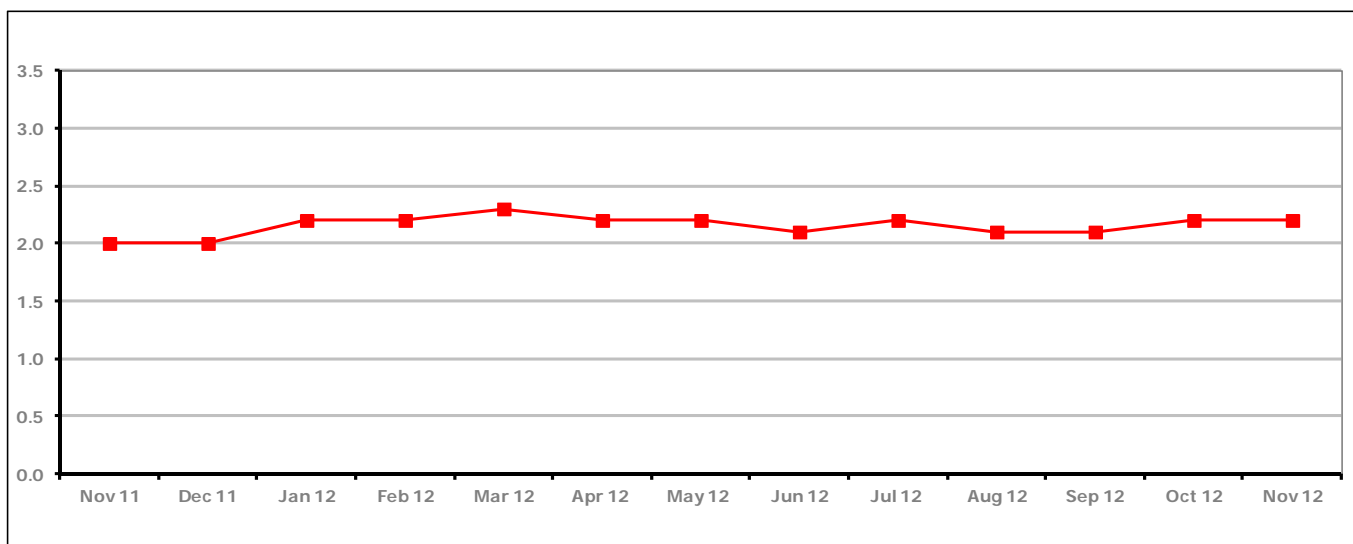
PART 4: LOCAL AUTHORITY DISTRICT AND WARD ANALYSIS**4.5 Stroud District****Claimant Rate and Claimant Count***Figure 16: Stroud District claimant rate over the last year*

Figure 16 shows the claimant rate for Stroud District remained the same as last month at 2.2%.

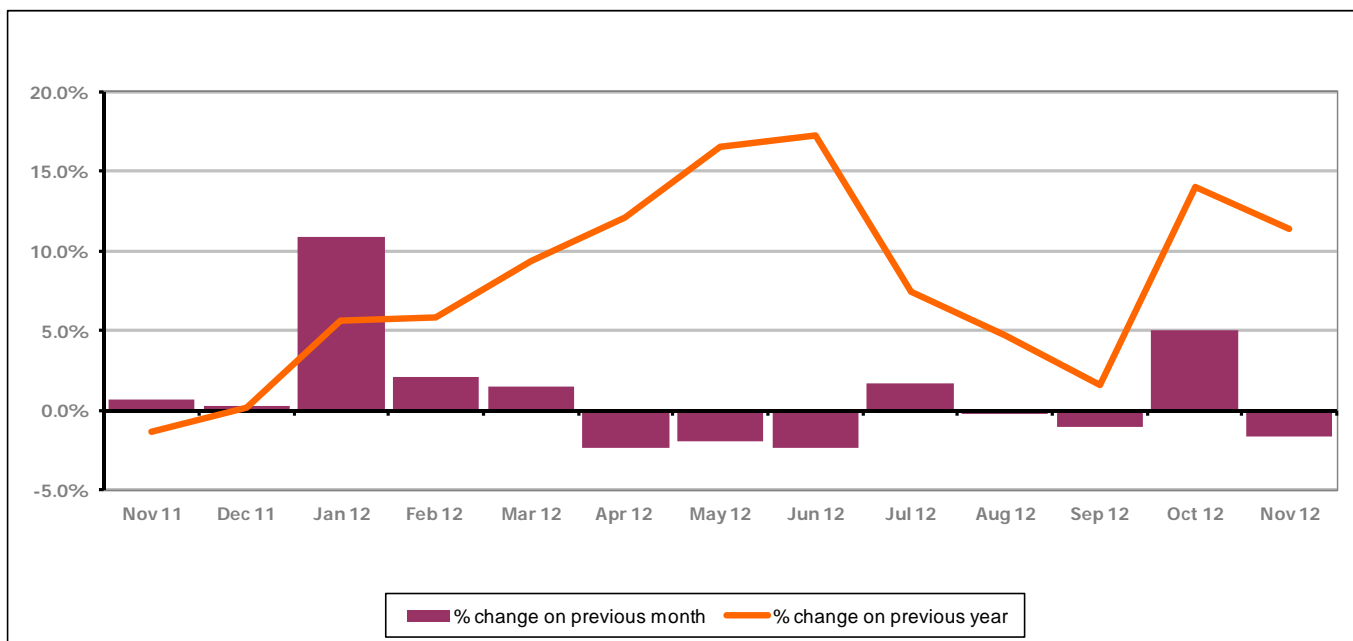
Figure 17: Stroud District claimants - Month on Month and Year on Year change

Figure 17 shows the monthly claimant count decreased by -1.7% since October 2012. The change on the previous year has decreased between October 2012 and November 2012 to +11.4%.

PART 4: LOCAL AUTHORITY AND DISTRICT ANALYSIS

4.5 Stroud District continued...

Figure 18: Claimant rates across Stroud District wards - November 2012

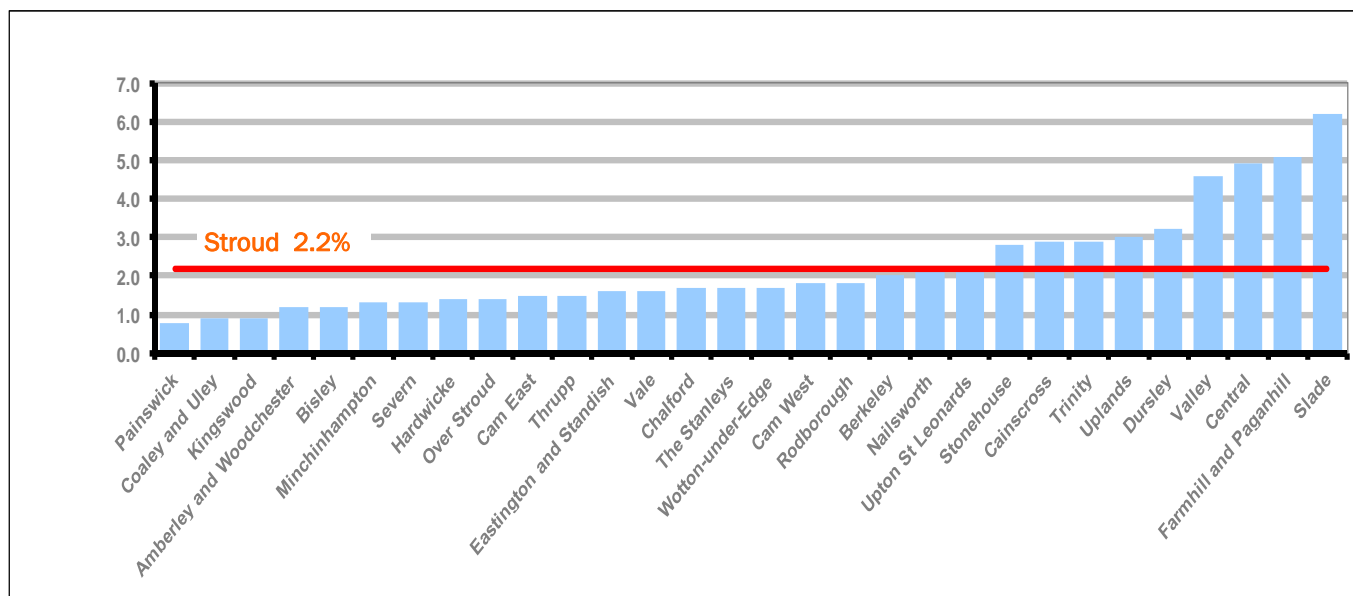
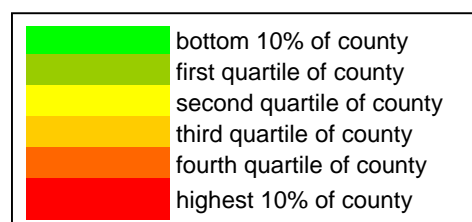


Figure 18 shows the claimant rates in Stroud District wards. The red line represents the average claimant rate across the District of 2.2%. Nine wards are above the average.

Table 9: Analysis of Claimant Count at Stroud District ward level - November 2012

| District | Ward | Rate | Rank* |
|----------|--------------------------|------|-------|
| Stroud | Painswick | 0.8 | 10 |
| Stroud | Coaley and Uley | 0.9 | 15 |
| Stroud | Kingswood | 0.9 | 15 |
| Stroud | Amberley and Woodchester | 1.2 | 31 |
| Stroud | Bisley | 1.2 | 31 |
| Stroud | Minchinhampton | 1.3 | 38 |
| Stroud | Severn | 1.3 | 38 |
| Stroud | Hardwicke | 1.4 | 43 |
| Stroud | Over Stroud | 1.4 | 43 |
| Stroud | Cam East | 1.5 | 53 |
| Stroud | Thrupp | 1.5 | 53 |
| Stroud | Eastington and Standish | 1.6 | 64 |
| Stroud | Vale | 1.6 | 64 |
| Stroud | Chalford | 1.7 | 70 |
| Stroud | The Stanleys | 1.7 | 70 |
| Stroud | Wotton-under-Edge | 1.7 | 70 |
| Stroud | Cam West | 1.8 | 73 |
| Stroud | Rodborough | 1.8 | 73 |
| Stroud | Berkeley | 2.0 | 79 |
| Stroud | Nailsworth | 2.1 | 81 |
| Stroud | Upton St Leonards | 2.1 | 81 |
| Stroud | Stonehouse | 2.8 | 103 |
| Stroud | Cainscross | 2.9 | 107 |
| Stroud | Trinity | 2.9 | 107 |
| Stroud | Uplands | 3.0 | 110 |
| Stroud | Dursley | 3.2 | 113 |
| Stroud | Valley | 4.6 | 126 |
| Stroud | Central | 4.9 | 127 |
| Stroud | Farmhill and Paganhill | 5.1 | 131 |
| Stroud | Slade | 6.2 | 136 |



* 1 = "best" and 142 = "worst"

Table 9 shows overall claimant rates for Stroud District wards and their position relative to all wards in Gloucestershire.

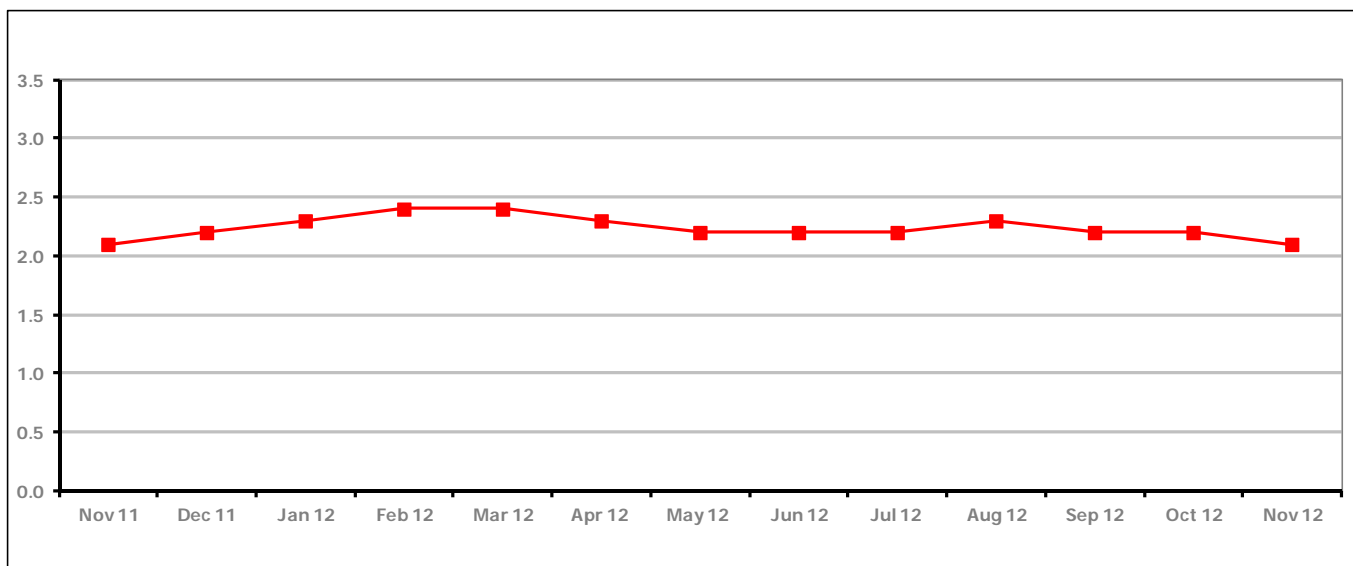
PART 4: LOCAL AUTHORITY DISTRICT AND WARD ANALYSIS**4.6 Tewkesbury District****Claimant Rate and Claimant Count***Figure 19: Tewkesbury District claimant rate over the last year*

Figure 19 shows the claimant rate for Tewkesbury District decreased in November 2012 to 2.1%.

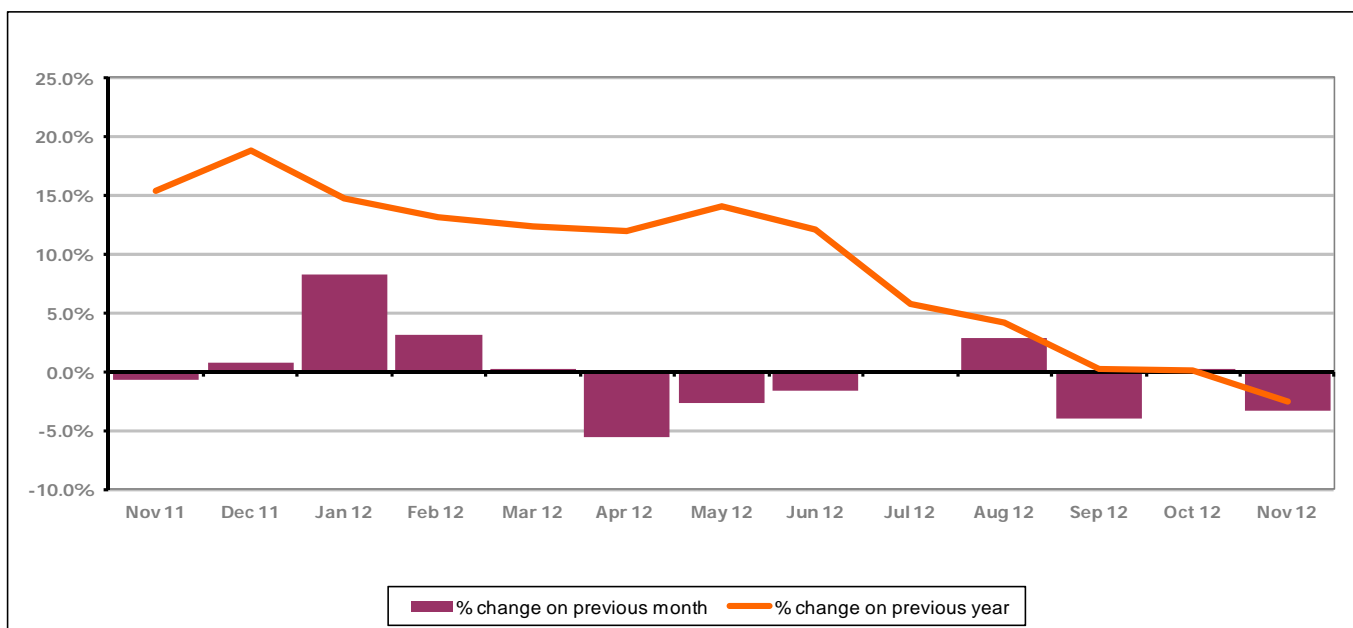
Figure 20: Tewkesbury District claimants - Month on Month and Year on Year change

Figure 20 shows that the monthly claimant count decreased in November 2012 by -3.3%. The change on the previous year decreased between October 2012 and November 2012 to -2.5%.

PART 4: LOCAL AUTHORITY AND DISTRICT ANALYSIS

4.6 Tewkesbury District continued...

Figure 21: Claimant rates across Tewkesbury District wards - November 2012

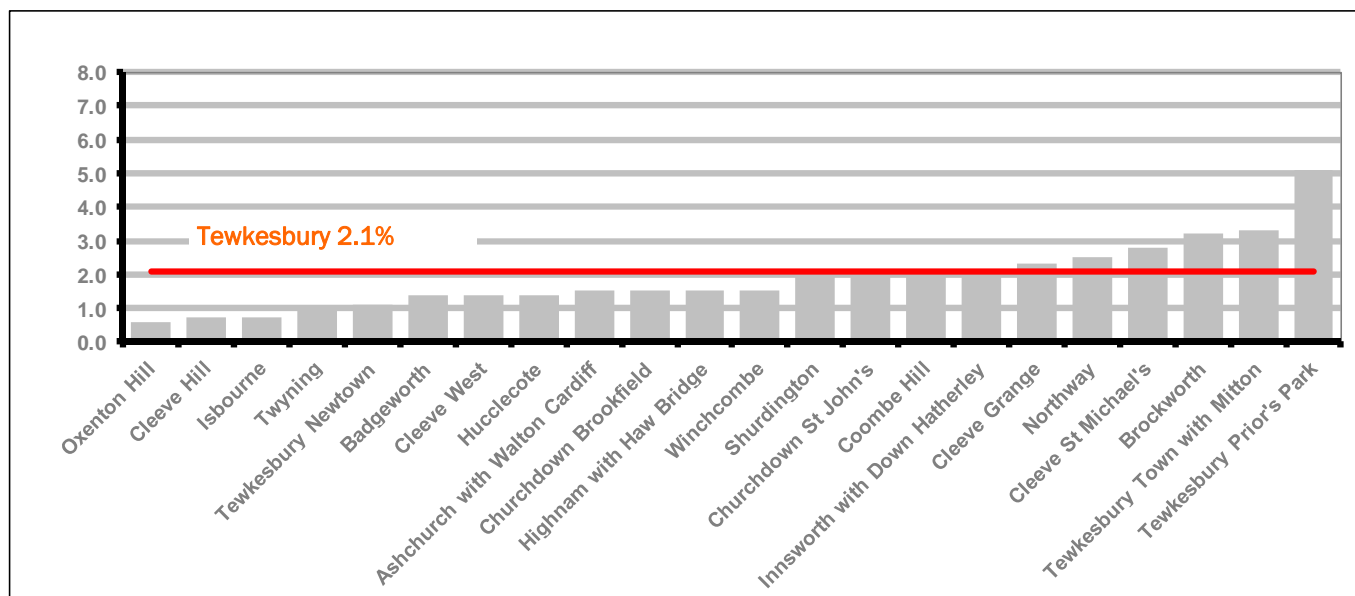
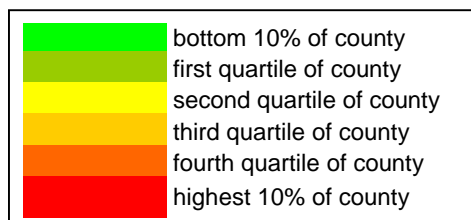


Figure 21 shows the claimant rates in Tewkesbury District wards. The red line represents the average claimant rate across the District of 2.1% and six wards are above the average.

Table 10: Analysis of Claimant Count at Tewkesbury District level - November 2012

| District | Ward | Rate | Rank* |
|------------|-------------------------------|------|-------|
| Tewkesbury | Oxenton Hill | 0.6 | 5 |
| Tewkesbury | Cleeve Hill | 0.7 | 7 |
| Tewkesbury | Isbourne | 0.7 | 7 |
| Tewkesbury | Twynning | 1.0 | 19 |
| Tewkesbury | Tewkesbury Newtown | 1.1 | 23 |
| Tewkesbury | Badgeworth | 1.4 | 43 |
| Tewkesbury | Cleeve West | 1.4 | 43 |
| Tewkesbury | Hucclecote | 1.4 | 43 |
| Tewkesbury | Ashchurch with Walton Cardiff | 1.5 | 53 |
| Tewkesbury | Churchdown Brookfield | 1.5 | 53 |
| Tewkesbury | Highnam with Haw Bridge | 1.5 | 53 |
| Tewkesbury | Winchcombe | 1.5 | 53 |
| Tewkesbury | Shurdington | 2.0 | 79 |
| Tewkesbury | Churchdown St John's | 2.1 | 81 |
| Tewkesbury | Coombe Hill | 2.1 | 81 |
| Tewkesbury | Innsworth with Down Hatherley | 2.1 | 81 |
| Tewkesbury | Cleeve Grange | 2.3 | 94 |
| Tewkesbury | Northway | 2.5 | 97 |
| Tewkesbury | Cleeve St Michael's | 2.8 | 103 |
| Tewkesbury | Brockworth | 3.2 | 113 |
| Tewkesbury | Tewkesbury Town with Mitton | 3.3 | 116 |
| Tewkesbury | Tewkesbury Prior's Park | 5.1 | 131 |

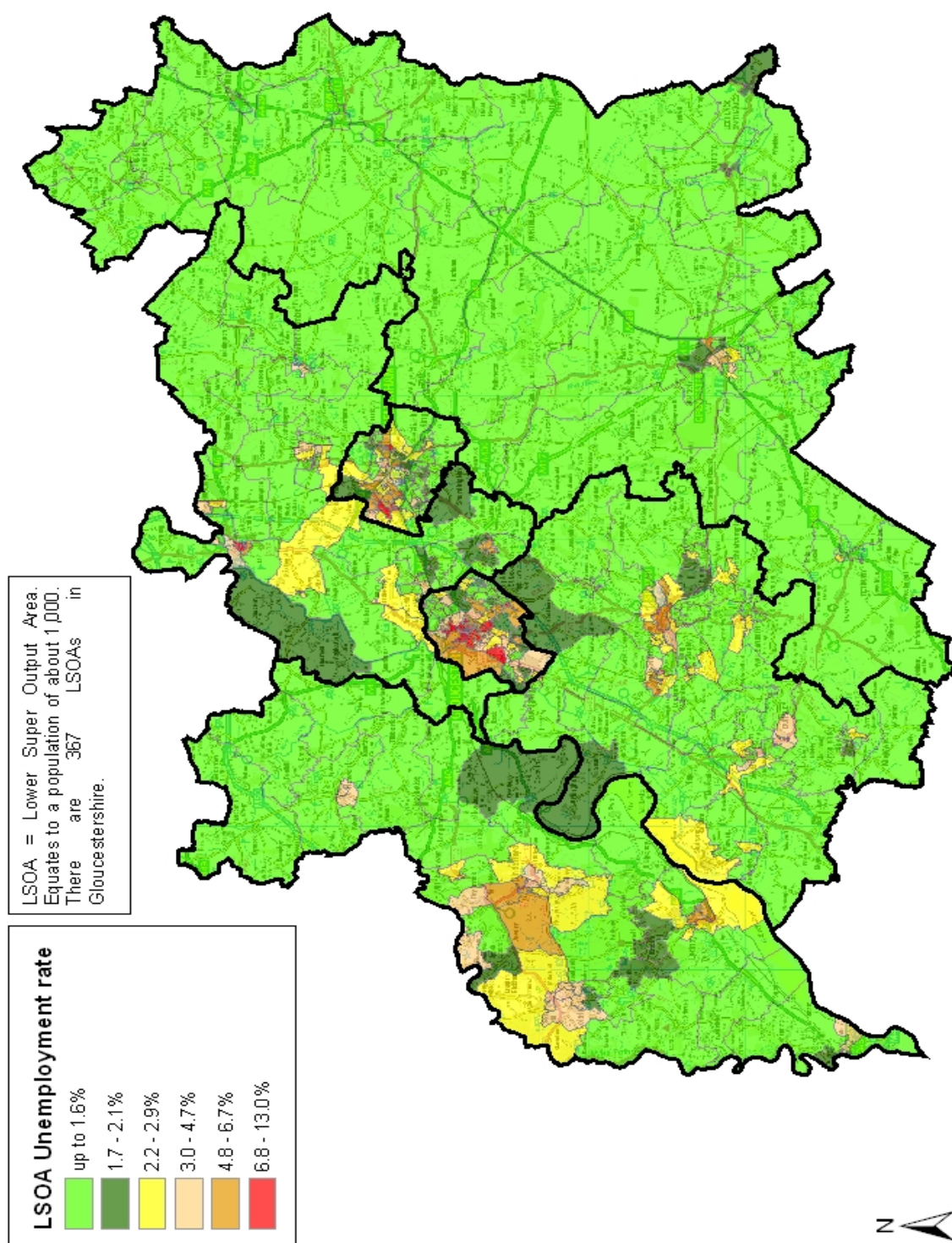


* 1 = "best" and 142 = "worst"

Table 10 shows overall claimant rates for Tewkesbury District wards and their position relative to all wards in Gloucestershire.

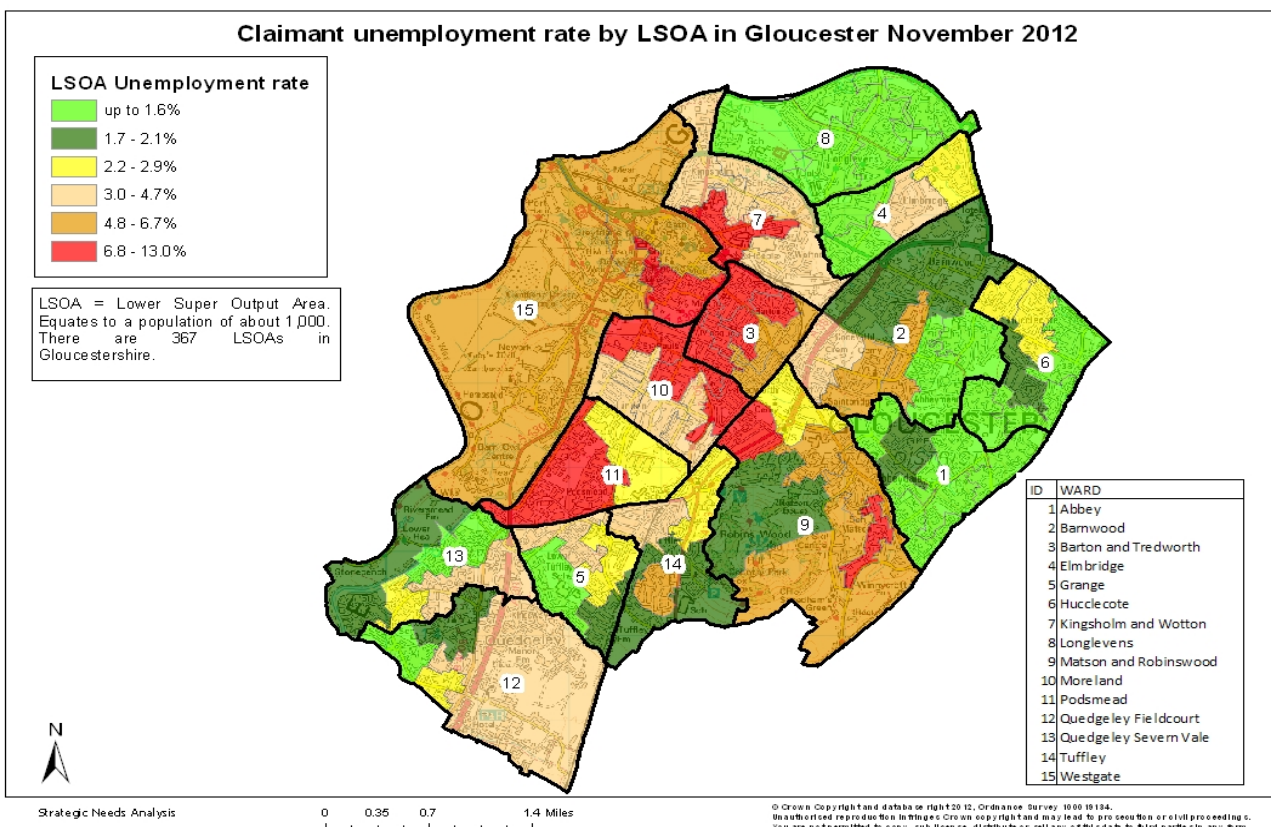
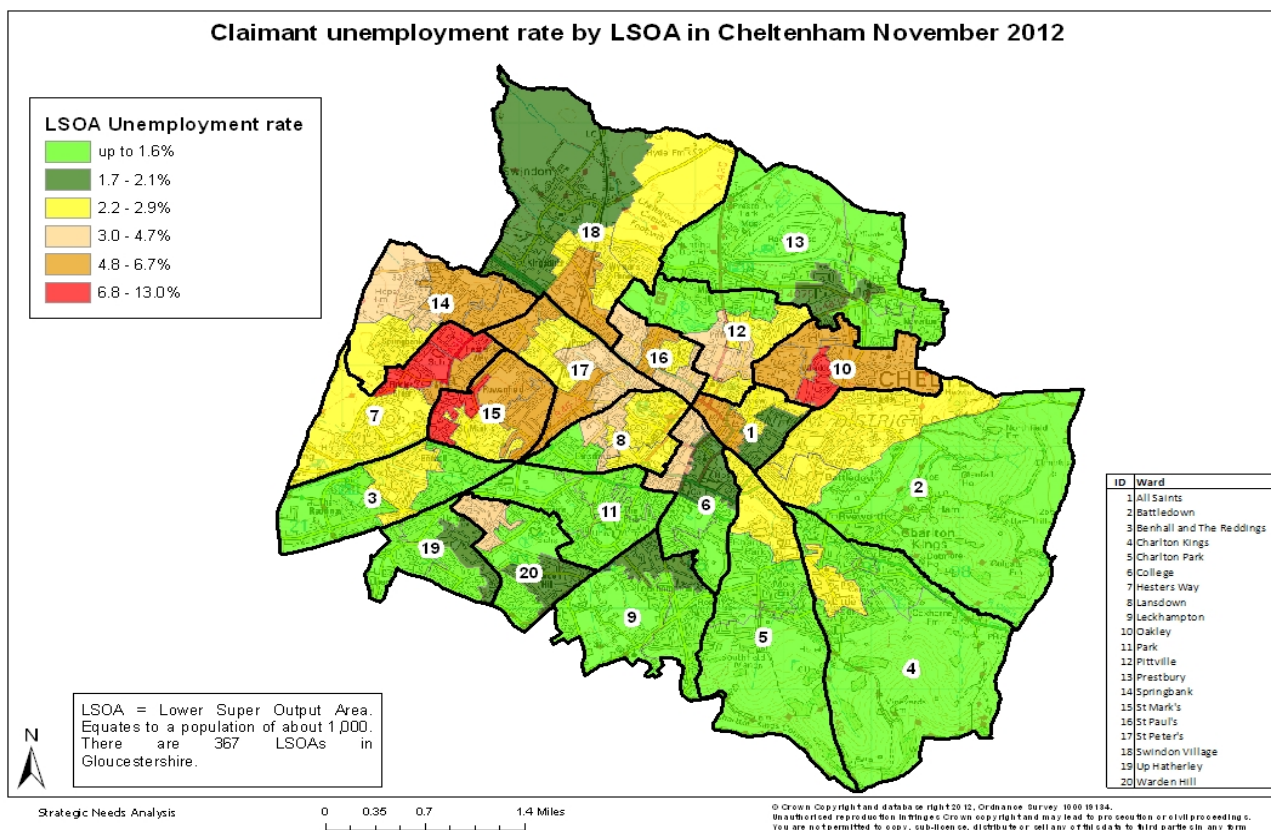
PART 5: MAP SHOWING DISTRIBUTION OF CLAIMANT RATE ACROSS GLOUCESTERSHIRE

Claimant unemployment rate by LSOA in Gloucestershire November 2012



© Crown Copyright and database right 2012. Ordnance Survey 100016134.
Unauthorized reproduction in any form or by any means without the written permission of the copyright owner is prohibited. You are not permitted to copy, distribute or display this data in any form.

PART 5: MAP SHOWING DISTRIBUTION OF CLAIMANT RATE ACROSS GLOUCESTERSHIRE



PART 6: YOUNG PEOPLE NOT IN EDUCATION, EMPLOYMENT OR TRAINING (NEET) IN GLOUCESTERSHIRE

Data provided by Prospects, the Connexions service in Gloucestershire on the situation of young people (16-18) in Gloucestershire who are not in education, employment or formal training.

Connexions Gloucestershire is required to report performance with the 16-18 age range against nationally defined criteria for counting the NEET group. The NEET group includes young people actively seeking education, employment or training as well as those young people who are either not yet ready or who are unable to access these opportunities because of their personal circumstances. The figures quoted below include young people in both of these categories.

Summary

At the end of November 2012 there were 801 young people aged 16-18 not in education, employment or training in Gloucestershire and this figure translates into an adjusted (*) 16-18 NEET population of 5.2%. The total number of NEET decreased by 54 young people in November 2012 compared to October 2012. 3 districts saw a decrease in their NEET figure, one district stayed the same and 2 districts saw an increase.

Total NEET Group by District Area

November 2012 NEET data

| | Cheltenham | Cotswold | Forest | Gloucester | Stroud | Tewkesbury | Total |
|-------------------|------------|----------|--------|------------|--------|------------|-------|
| Total NEET | 152 | 61 | 103 | 272 | 117 | 96 | 801 |
| Cohort | 2679 | 2206 | 2330 | 5165 | 3169 | 2005 | 17554 |
| % NEET | 5.7 | 2.8 | 4.4 | 5.3 | 3.7 | 4.8 | 5.2 |

If you would like to receive any further information on Gloucestershire's NEET strategy then please contact Ruth.Critchlow@gloucestershire.gov.uk or telephone 01452 551267.