

DO NOT SCALE

100  
Millimetres  
0 10

KEY:

- HIGHWAY BOUNDARY
- PROPOSED HIGHWAY BOUNDARY
- CHAINAGE REFERENCE MARKERS
- EXISTING CARRIAGEWAY
- PROPOSED CARRIAGEWAY WIDENING
- EXISTING FOOTWAY
- PROPOSED FOOTWAY
- PROPOSED CYCLEWAY
- PROPOSED MARKINGS
- EXISTING LANDSCAPE
- PROPOSED LANDSCAPE
- EXISTING SHARED USE
- PROPOSED SHARED USE
- PROPOSED SEGREGATION BUFFER
- EXISTING ISLAND REUTILISED
- PROPOSED BUS SHELTER
- PROPOSED GRASS CONCRETE (SEE NOTE 3)
- EXISTING VEHICLE RESTRICTED ZONE
- UPGRADED VEHICLE RESTRICTED ZONE
- PROPOSED RAISED CROSSING
- PROPOSED RAMP

- PROPOSED ZEBRA CROSSING OVER CYCLE TRACK
- PROPOSED DRIVEWAY
- PROPOSED EARTHWORK
- PROPOSED CORDUROY PAVING
- PROPOSED CORDUROY TRAMLINE AND LADDER PAVING
- PROPOSED BLISTERED TACTILE PAVING (UNCONTROLLED CROSSING - BUFF COLOUR)
- PROPOSED BLISTERED TACTILE PAVING (CONTROLLED CROSSING - RED COLOUR)
- EXISTING TREE TO BE REMOVED
- PROPOSED BELISHA BEACON
- PROPOSED SELF RIGHTING REFLECTORIZED BOLLARD
- HAZARD WARNING TRIANGLE
- EXISTING WAITING RESTRICTIONS
- PROPOSED WAITING RESTRICTIONS
- NEW STREET LIGHTING COLUMN POSITION
- EXISTING STREET LIGHTING COLUMN TO BE RETAINED
- PROPOSED LITTER BIN
- PROPOSED SIGN / POST
- PROPOSED SIGN FACE MOUNTED ON LIGHTING COLUMN / EXISTING POST
- PROPOSED ILLUMINATED SIGN

- PROPOSED LOCATION OF THE RELOCATED SIGN
- STEEL TRAFFIC SIGNAL POLE
- COMBINED NEARSIDE PUFFIN INDICATOR AND PUSH BUTTON UNIT (WITH TACTILE DEVICE)
- PRIMARY RAG TRAFFIC SIGNAL HEAD
- LOW-LEVEL CYCLE RAG TRAFFIC SIGNAL HEAD
- PUSH BUTTON DEMAND UNIT
- ELECTRICAL SUPPLY FEEDER PILLAR
- PROPOSED GULLY
- PROPOSED MANHOLE
- PROPOSED MULTI-DRAIN MD (LINEAR DRAINAGE CHANNEL OR SIMILAR APPROVED)
- PROPOSED LINEAR DRAINAGE CHANNEL OUTLET
- PROPOSED DRAINAGE KERB INLET GULLY
- TACTILE BLISTER PAVING 200 X 133 X 60 (BLACK COLOUR)
- PROPOSED NEOPOLITAN BOLLARD 150 OR SIMILAR
- PROPOSED TREES
- PROPOSED SITTING BENCH
- HIGHWAY SITE EXTENT

PRINCE OF WALES STADIUM

TOMMY TAYLORS LANE

LEISURE CENTRE

EXISTING LAY-BY

HUDSON STREET

FOLLY LANE

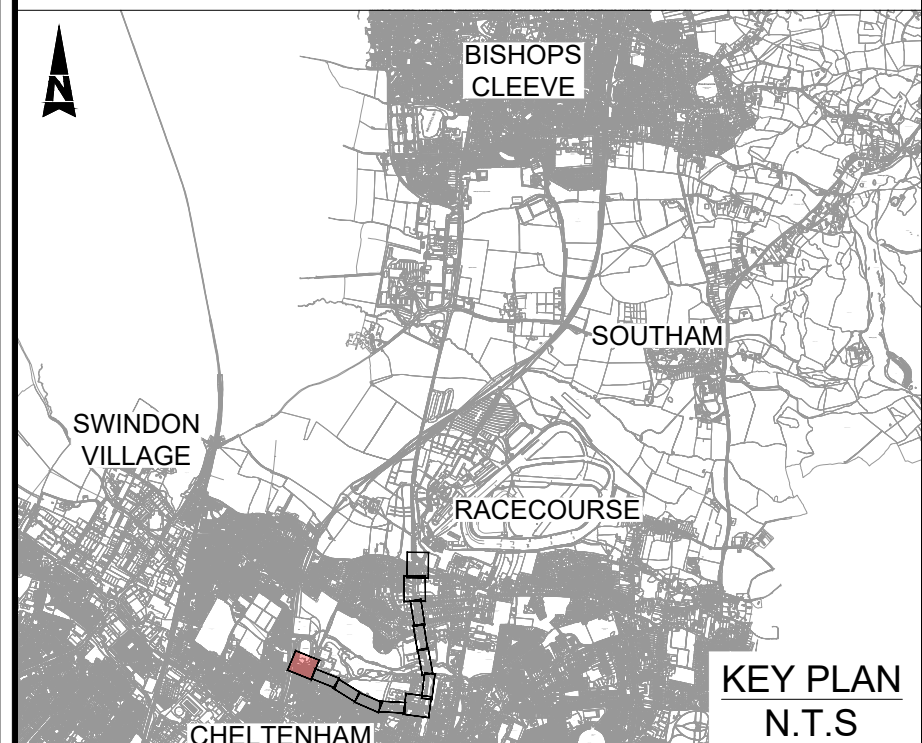
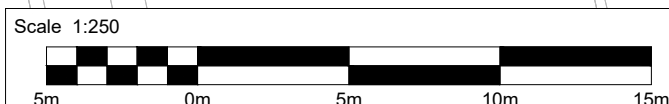
NOTES:

- ALL DIMENSIONS ARE IN METRES UNLESS OTHERWISE STATED.
- FOR DRAINAGE DETAILS AND EXTENT OF DRAINAGE WORK REFER DRAWING NOS. A435C-ATK-HDG-S1-DR-CD-000001 TO A435C-ATK-HDG-S1-DR-CD-000008.
- FOR DETAILS OF PAVEMENT TREATMENT, REFER TO PAVEMENT LAYOUT DRAWING NOS. A435C-ATK-HRV-S1-DR-CH-000701 TO A435C-ATK-HDG-S1-DR-CH-000708.
- FOR KERBS & FOOTWAY, REFER DRAWING NOS. A435C-ATK-HKF-S1-DR-CH-001101 TO A435C-ATK-HKF-S1-DR-CH-001108.
- FOR ROAD MARKINGS, REFER DRAWING NOS. A435C-ATK-HMK-S1-DR-CH-001201 TO A435C-ATK-HMK-S1-DR-CH-001208.
- FOR TRAFFIC SIGNS, REFER DRAWING NOS. A435C-ATK-HSN-S1-DR-CH-001201 TO A435C-ATK-HSN-S1-DR-CH-001208.

- FOR TRAFFIC SIGNALS AND EXTENT OF TRAFFIC SIGNALS WORK REFER DRAWING NOS. A435C-ATK-HTS-S1-DR-CH-001201 TO A435C-ATK-HTS-S1-DR-CH-001208.
- FOR STREET LIGHTING, REFER DRAWING NOS. A435C-ATK-HLG-S1-DR-CH-001301 TO A435C-ATK-HLG-S1-DR-CH-001308.
- FOR LANDSCAPE, REFER DRAWING NOS. A435C-ATK-ELS-S1-DR-LL-000001 TO A435C-ATK-ELS-S1-DR-LL-000008.
- THE EXACT LOCATION OF ALL STATUTORY UNDERTAKERS PLANT AND EQUIPMENT MUST BE VERIFIED BY THE CONTRACTOR IN ACCORDANCE WITH HSG47 AND GS6 BEFORE COMMENCEMENT OF WORKS ON SITE.
- PROPOSED GREEN CLOURED COLD APPLIED HFS - MMA(METHYL METHACRYLATE) SURFACE TREATMENT SHALL BE APPLIED TO THE PROPOSED CYCLEWAYS, WHERE SPECIFIED. THE PRODUCT SHALL BE INSTALLED BY MANUFACTURER'S APPROVED INSTALLERS IN ACCORDANCE WITH THE MANUFACTURER'S INSTALLATION PROCEDURES.(REFER SPECIFICATION DOCUMENT A435C-ATK-HKF-S1-CD-ZL-001100 FOR MMA MATERIAL DESCRIPTION)

- FOR MORE INFORMATION ON RESIDUAL RISKS, PLEASE REFER TO DESIGNER RISK ASSESSMENT DOCUMENT NO-A435C-ATK-HGN-S1-RA-ZM-000001.
- FOR DETAILS OF THE REMOVAL OR REPLACEMENT OF BUS STOP SHELTERS, PLEASE REFER TO SERIES 100 AND SERIES 200.
- ROAD MARKINGS PROPOSED ON PRIVATE ROADS TO BE AGREED WITH THE RESPECTIVE LAND OWNERS.

This map is based on Ordnance Survey material with the permission of Ordnance Survey on behalf of the Controller of His Majesty's Stationary Office. You are not permitted to copy, sub-license, distribute or sell any of this data to third parties in any form. © Crown copyright and database rights 2023. Ordnance Survey A100000000.



SAFETY, HEALTH AND ENVIRONMENTAL INFORMATION

In addition to the hazards/risks normally associated with the types of work detailed on this drawing, note the following significant residual risks (Reference shall also be made to the design hazard log).

Construction

- NUMEROUS UTILITIES (FOR FURTHER DETAILS REFER COMBINED UTILITY DRAWING NO. A435C-ATK-VUT-S1-DR-CH-002701 TO A435C-ATK-VUT-S1-DR-CH-002708)
- UNDERGROUND POWER LINES 3. GAS PIPE LIN 4. UNDERGROUND CABLE LINE TELECOMMUNICATION 5. OVERHEAD CABLE LINE TELECOMMUNICATION 6. WATER MAINS

Maintenance / Cleaning

- NUMEROUS UTILITIES (FOR FURTHER DETAILS REFER COMBINED UTILITY DRAWING NO. A435C-ATK-VUT-S1-DR-CH-002701 TO A435C-ATK-VUT-S1-DR-CH-002708)
- UNDERGROUND POWER LINES 3. GAS PIPE LIN 4. UNDERGROUND CABLE LINE TELECOMMUNICATION 5. OVERHEAD CABLE LINE TELECOMMUNICATION 6. WATER MAINS

Decommissioning / Demolition

- NUMEROUS UTILITIES (FOR FURTHER DETAILS REFER COMBINED UTILITY DRAWING NO. A435C-ATK-VUT-S1-DR-CH-002701 TO A435C-ATK-VUT-S1-DR-CH-002708)
- UNDERGROUND POWER LINES 3. GAS PIPE LIN 4. UNDERGROUND CABLE LINE TELECOMMUNICATION 5. OVERHEAD CABLE LINE TELECOMMUNICATION 6. WATER MAINS

Status	Revision	Drawn	Checked	Reviewed	Authorised	Issue Date
--------	----------	-------	---------	----------	------------	------------

Status	Revision	Drawn	Checked	Reviewed	Authorised	Issue Date
--------	----------	-------	---------	----------	------------	------------

Status	Revision	Drawn	Checked	Reviewed	Authorised	Issue Date
--------	----------	-------	---------	----------	------------	------------

Status	Revision	Drawn	Checked	Reviewed	Authorised	Issue Date
--------	----------	-------	---------	----------	------------	------------

Status	Revision	Drawn	Checked	Reviewed	Authorised	Issue Date
--------	----------	-------	---------	----------	------------	------------

Status	Revision	Drawn	Checked	Reviewed	Authorised	Issue Date
--------	----------	-------	---------	----------	------------	------------

Status	Revision	Drawn	Checked	Reviewed	Authorised	Issue Date
--------	----------	-------	---------	----------	------------	------------

Status	Revision	Drawn	Checked	Reviewed	Authorised	Issue Date
--------	----------	-------	---------	----------	------------	------------

Status	Revision	Drawn	Checked	Reviewed	Authorised	Issue Date
--------	----------	-------	---------	----------	------------	------------

Status	Revision	Drawn	Checked	Reviewed	Authorised	Issue Date
--------	----------	-------	---------	----------	------------	------------

Status	Revision	Drawn	Checked	Reviewed	Authorised	Issue Date
--------	----------	-------	---------	----------	------------	------------

Status	Revision	Drawn	Checked	Reviewed	Authorised	Issue Date
--------	----------	-------	---------	----------	------------	------------

Status	Revision	Drawn	Checked	Reviewed	Authorised	Issue Date
--------	----------	-------	---------	----------	------------	------------

Status	Revision	Drawn	Checked	Reviewed	Authorised	Issue Date
--------	----------	-------	---------	----------	------------	------------

Status	Revision	Drawn	Checked	Reviewed	Authorised	Issue Date
--------	----------	-------	---------	----------	------------	------------

Status	Revision	Drawn	Checked	Reviewed	Authorised	Issue Date
--------	----------	-------	---------	----------	------------	------------

Status	Revision	Drawn	Checked	Reviewed	Authorised	Issue Date
--------	----------	-------	---------	----------	------------	------------

Status	Revision	Drawn	Checked	Reviewed	Authorised	Issue Date
--------	----------	-------	---------	----------	------------	------------

Status	Revision	Drawn	Checked	Reviewed	Authorised	Issue Date
--------	----------	-------	---------	----------	------------	------------

Status	Revision	Drawn	Checked	Reviewed	Authorised	Issue Date
--------	----------	-------	---------	----------	------------	------------

Status	Revision	Drawn	Checked	Reviewed	Authorised	Issue Date
--------	----------	-------	---------	----------	------------	------------

Status	Revision	Drawn	Checked	Reviewed	Authorised	Issue Date
--------	----------	-------	---------	----------	------------	------------

Status	Revision	Drawn	Checked	Reviewed	Authorised	Issue Date
--------	----------	-------	---------	----------	------------	------------

Status	Revision	Drawn	Checked	Reviewed	Authorised	Issue Date
--------	----------	-------	---------	----------	------------	------------

Status	Revision	Drawn	Checked	Reviewed	Authorised	Issue Date
--------	----------	-------	---------	----------	------------	------------

Status	Revision	Drawn	Checked	Reviewed	Authorised	Issue Date
--------	----------	-------	---------	----------	------------	------------

Status	Revision	Drawn	Checked	Reviewed	Authorised	Issue Date
--------	----------	-------	---------	----------	------------	------------

Status	Revision	Drawn	Checked	Reviewed	Authorised	Issue Date
--------	----------	-------	---------	----------	------------	------------

Status	Revision	Drawn	Checked	Reviewed	Authorised	Issue Date
--------	----------	-------	---------	----------	------------	------------